



*WEEKLY SALES SUMMARY*

Unaudited

**Week Ending: 1/02/2016**

Texas Lottery Commission  
Fiscal Year to Date Sales Comparison  
Unaudited

Through the Week Ending 1/02/2016 (18 Weeks)

Sales by Game	FY 2014 *	FY 2015 **	FY 2016	\$ Change		% Change	
				FY 2016 to FY 2014	FY 2016 to FY 2015	FY 2016 to FY 2014	FY 2016 to FY 2015
Scratch Tickets	\$ 1,099,711,839	\$ 1,142,967,533	\$ 1,189,725,268	\$ 90,013,429	\$ 46,757,735	8.2%	4.1%
Lotto Texas	46,267,195	41,832,930	43,135,466	-3,131,729	1,302,536	-6.8%	3.1%
Lotto Extra	5,959,794	6,316,143	7,305,942	1,346,148	989,799	22.6%	15.7%
Pick 3	86,898,273	85,852,333	85,923,104	-975,169	70,771	-1.1%	0.1%
Pick 3 Sum It Up	1,717,690	1,635,454	1,704,240	-13,450	68,786	-0.8%	4.2%
Cash Five	18,260,975	17,079,645	15,794,085	-2,466,890	-1,285,560	-13.5%	-7.5%
Texas Two Step	19,464,604	18,719,624	17,696,064	-1,768,540	-1,023,560	-9.1%	-5.5%
Mega Millions	89,695,144	55,866,274	43,763,753	-45,931,391	-12,102,521	-51.2%	-21.7%
Megaplier	18,208,320	12,657,721	10,901,380	-7,306,940	-1,756,341	-40.1%	-13.9%
Daily 4	28,600,525	29,007,062	29,710,064	1,109,540	703,003	3.9%	2.4%
Daily 4 Sum It Up	1,755,762	1,729,274	1,532,292	-223,471	-196,982	-12.7%	-11.4%
Powerball	75,296,461	58,317,327	77,421,781	2,125,320	19,104,454	2.8%	32.8%
Power Play	8,903,596	7,672,021	9,912,058	1,008,462	2,240,037	11.3%	29.2%
All or Nothing	16,009,828	13,359,890	10,601,604	-5,408,224	-2,758,286	-33.8%	-20.6%
Monopoly	- <sup>1</sup>	2,656,700	-	-	-2,656,700	-	-100.0%
Texas Triple Chance	-	-	9,348,445	9,348,445	9,348,445	-	-
<b>Total</b>	<b>\$ 1,516,750,005</b>	<b>\$ 1,495,669,930</b>	<b>\$ 1,554,475,545</b>	<b>\$ 37,725,540</b>	<b>\$ 58,805,615</b>	<b>2.5%</b>	<b>3.9%</b>

\* 2 extra days

\*\* 1 extra day

<sup>1</sup> Monopoly sales were suspended after draw on 12/12/14

Texas Lottery Commission  
Fiscal Year to Date Cumulative Average Sales Comparison  
Unaudited

Through the Week Ending 1/02/2016 (18 Weeks)

Sales by Game	FY 2014	FY 2015	FY 2016
Scratch Tickets	\$ 8,727,872	\$ 9,143,740	\$ 9,594,559
Lotto Texas	367,200	334,663	347,867
Lotto Extra	47,300	50,529	58,919
Pick 3	689,669	686,819	692,928
Pick 3 Sum It Up	13,632	13,084	13,744
Cash Five	144,928	136,637	127,372
Texas Two Step	154,481	149,757	142,710
Mega Millions	711,866	446,930	352,933
Megaplier	144,510	101,262	87,914
Daily 4	226,988	232,056	239,597
Daily 4 Sum It Up	13,935	13,834	12,357
Powerball	597,591	466,539	624,369
Power Play	70,663	61,376	79,936
All or Nothing	127,062	106,879	85,497
Monopoly	- **	48,304	-
Texas Triple Chance	- *	-	95,392
<b>Total</b>	<b>\$ <u>12,037,698</u></b>	<b>\$ <u>11,992,409</u></b>	<b>\$ <u>12,556,095</u></b>

thru 1/04/2014  
126 days

\*\*

thru 1/03/2015  
125 days  
55 days

\*

thru 1/02/2016  
124 days  
98 days

Texas Lottery Commission  
Fiscal Year Over Year Change in Sales  
Unaudited  
FY 2016 Compared to FY 2015

			SCRATCH TICKETS				DRAW GAMES				TOTAL SALES			
FY 2016			% change -				% change -				% change -			
Week	Week	Ending	FY 2016	FY 2015	Difference	Cumulative Sales	FY 2016	FY 2015	Difference	Cumulative Sales	FY 2016	FY 2015	Difference	Cumulative Sales
1	9/5/2015 *		\$49,534,249	\$54,911,801	(\$5,377,552)	-9.8%	\$17,091,724	\$17,482,488	(\$390,765)	-2.2%	\$66,625,973	\$72,394,289	(\$5,768,317)	-8.0%
2	9/12/2015		\$61,566,291	\$61,436,533	\$129,758	0.2%	\$20,630,922	\$19,097,081	\$1,533,841	8.0%	\$82,197,213	\$80,533,614	\$1,663,599	2.1%
3	9/19/2015		\$63,530,657	\$60,959,234	\$2,571,423	4.2%	\$20,327,253	\$20,567,894	(\$240,641)	-1.2%	\$83,857,910	\$81,527,128	\$2,330,782	2.9%
4	9/26/2015		\$61,731,400	\$59,710,056	\$2,021,344	3.4%	\$22,252,290	\$19,920,828	\$2,331,462	11.7%	\$83,983,690	\$79,630,884	\$4,352,806	5.5%
5	10/3/2015		\$67,048,415	\$62,119,854	\$4,928,561	7.9%	\$25,436,791	\$18,531,421	\$6,905,370	37.3%	\$92,485,206	\$80,651,275	\$11,833,931	14.7%
6	10/10/2015		\$66,049,706	\$61,253,665	\$4,796,041	7.8%	\$18,138,977	\$18,985,332	(\$846,355)	-4.5%	\$84,188,683	\$80,238,997	\$3,949,687	4.9%
7	10/17/2015		\$65,073,593	\$60,230,048	\$4,843,545	8.0%	\$17,776,414	\$19,538,402	(\$1,761,988)	-9.0%	\$82,850,007	\$79,768,450	\$3,081,558	3.9%
8	10/24/2015		\$64,087,437	\$62,384,112	\$1,703,325	2.7%	\$18,450,464	\$21,475,643	(\$3,025,179)	-14.1%	\$82,537,901	\$83,859,755	(\$1,321,854)	-1.6%
9	10/31/2015		\$66,025,374	\$63,404,713	\$2,620,661	4.1%	\$19,568,150	\$23,568,817	(\$4,000,668)	-17.0%	\$85,593,524	\$86,973,530	(\$1,380,007)	-1.6%
10	11/7/2015		\$68,137,192	\$65,486,719	\$2,650,473	4.0%	\$20,398,351	\$23,749,032	(\$3,350,681)	-14.1%	\$88,535,543	\$89,235,751	(\$700,208)	-0.8%
11	11/14/2015		\$65,449,428	\$61,745,521	\$3,703,907	6.0%	\$20,169,382	\$17,449,604	\$2,719,779	15.6%	\$85,618,810	\$79,195,125	\$6,423,686	8.1%
12	11/21/2015		\$68,364,421	\$66,353,583	\$2,010,838	3.0%	\$17,174,606	\$17,108,084	\$66,522	0.4%	\$85,539,027	\$83,461,667	\$2,077,360	2.5%
13	11/28/2015		\$61,091,628	\$60,471,184	\$620,444	1.0%	\$17,168,993	\$17,303,129	(\$134,136)	-0.8%	\$78,260,621	\$77,774,313	\$486,309	0.6%
14	12/5/2015		\$67,830,827	\$66,648,696	\$1,182,131	1.8%	\$19,252,418	\$18,862,425	\$389,994	2.1%	\$87,083,245	\$85,511,121	\$1,572,125	1.8%
15	12/12/2015		\$68,324,452	\$65,708,630	\$2,615,822	4.0%	\$19,529,408	\$18,649,598	\$879,811	4.7%	\$87,853,860	\$84,358,228	\$3,495,633	4.1%
16	12/19/2015		\$71,041,258	\$68,551,298	\$2,489,960	3.6%	\$20,824,840	\$19,051,100	\$1,773,740	9.3%	\$91,866,098	\$87,602,398	\$4,263,700	4.9%
17	12/26/2015		\$78,125,965	\$73,858,618	\$4,267,347	5.8%	\$22,586,417	\$20,006,357	\$2,580,061	12.9%	\$100,712,382	\$93,864,975	\$6,847,408	7.3%
18	1/2/2016		\$76,712,975	\$67,733,268	\$8,979,707	13.3%	\$27,972,880	\$21,355,167	\$6,617,714	31.0%	\$104,685,855	\$89,088,435	\$15,597,421	17.5%
19	1/9/2016			\$64,745,641				\$22,265,347				\$87,010,988		
20	1/16/2016			\$64,015,166				\$23,694,617				\$87,709,783		
21	1/23/2016			\$62,569,156				\$19,765,442				\$82,334,598		
22	1/30/2016			\$68,001,588				\$22,877,000				\$90,878,588		
23	2/6/2016			\$75,677,650				\$31,662,209				\$107,339,859		
24	2/13/2016			\$75,368,712				\$46,091,747				\$121,460,459		
25	2/20/2016			\$74,833,076				\$19,865,172				\$94,698,248		
26	2/27/2016			\$69,918,013				\$19,735,352				\$89,653,365		
27	3/5/2016			\$74,848,961				\$19,946,068				\$94,795,029		
28	3/12/2016			\$70,079,409				\$20,044,562				\$90,123,971		
29	3/19/2016			\$70,368,686				\$18,480,795				\$88,849,481		
30	3/26/2016			\$70,280,600				\$17,595,205				\$87,875,805		
31	4/2/2016			\$74,369,952				\$18,378,917				\$92,748,869		
32	4/9/2016			\$67,416,817				\$18,594,844				\$86,011,661		
33	4/16/2016			\$68,393,316				\$18,104,632				\$86,497,948		
34	4/23/2016			\$70,078,182				\$17,957,150				\$88,035,332		
35	4/30/2016			\$71,744,718				\$18,961,113				\$90,705,831		
36	5/7/2016			\$73,415,978				\$20,210,341				\$93,626,319		
37	5/14/2016			\$72,152,109				\$20,362,774				\$92,514,883		
38	5/21/2016			\$70,399,950				\$21,246,276				\$91,646,226		
39	5/28/2016			\$68,547,554				\$22,227,946				\$90,775,500		
40	6/4/2016			\$71,254,006				\$20,739,703				\$91,993,709		
41	6/11/2016			\$65,878,375				\$17,216,403				\$83,094,778		
42	6/18/2016			\$66,658,742				\$17,340,531				\$83,999,273		

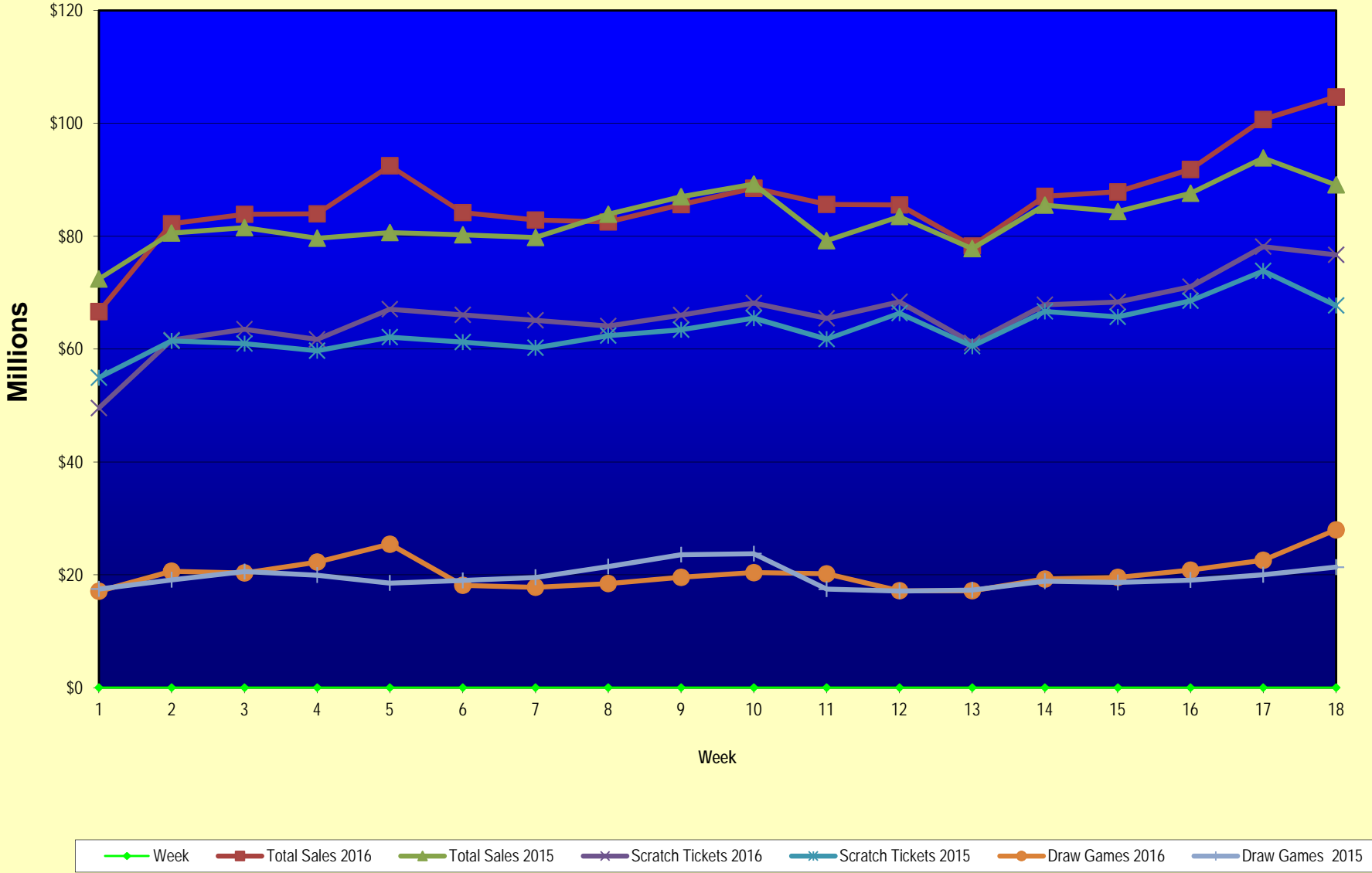
Texas Lottery Commission  
Fiscal Year Over Year Change in Sales  
Unaudited  
FY 2016 Compared to FY 2015

			SCRATCH TICKETS				DRAW GAMES				TOTAL SALES			
FY 2016			FY 2016	FY 2015	Difference	% change - Cumulative Sales	FY 2016	FY 2015	Difference	% change - Cumulative Sales	FY 2016	FY 2015	Difference	% change - Cumulative Sales
Week	Week	Ending												
43	6/25/2016			\$65,282,276				\$16,873,368				\$82,155,644		
44	7/2/2016			\$67,757,752				\$18,007,540				\$85,765,292		
45	7/9/2016			\$64,718,254				\$18,203,985				\$82,922,239		
46	7/16/2016			\$64,957,977				\$18,792,785				\$83,750,762		
47	7/23/2016			\$62,541,241				\$18,229,965				\$80,771,206		
48	7/30/2016			\$66,468,460				\$17,742,489				\$84,210,949		
49	8/6/2016			\$62,412,598				\$17,331,374				\$79,743,972		
50	8/13/2016			\$62,089,389				\$17,501,599				\$79,590,988		
51	8/20/2016			\$62,437,148				\$17,779,458				\$80,216,606		
52	8/27/2016			\$61,403,206				\$18,529,560				\$79,932,766		
	8/31/2016 **			\$17,309,621				\$3,279,958				\$20,589,579		
Total thru Current Week			\$1,189,725,268	\$1,142,967,533	\$46,757,735	4.1%	\$364,750,277	\$352,702,397	\$12,047,880	3.4%	\$1,554,475,545	\$1,495,669,930	\$58,805,615	3.9%
Fiscal Year Total			\$1,189,725,268	\$3,481,361,812			\$364,750,277	\$1,048,338,613			\$1,554,475,545	\$4,529,700,425		

\* FY 16 includes 5 days; FY 15 includes 6 days

\*\* FY 16 includes 4 days; FY 15 includes 2 days

### Texas Lottery Commission Fiscal Year Over Year Change in Sales



Note: Week 1 is not a full week of sales as this report is prepared on a Fiscal Year basis.

Texas Lottery Commission  
Scratch Tickets by Price Point  
Sales, Prize Expense, Sales Contribution and Payout Percentage With Year Over Year Changes  
Unaudited

Fiscal Year	Price Point	# of Active Games	FY Sales	% of Scratch Ticket Sales	Year over Year Change in Sales	FY Prize Expense	Year over Year Change in Prize Expense	FY Sales Contribution	Year over Year Change in Contribution	Average Prize Payout %	Year over Year Change in Payout %
2015	\$1.00	17	57,362,064	5.0%		35,054,745		22,307,319		61.1%	2.0%
Through	\$2.00	27	119,753,264	10.5%		79,014,724		40,738,540		66.0%	1.8%
1/3/2015	\$3.00	12	111,989,385	9.8%		73,811,645		38,177,740		65.9%	0.4%
	\$5.00	38	365,555,550	32.0%		248,343,839		117,211,711		67.9%	0.0%
	\$10.00	14	226,149,050	19.8%		159,447,044		66,702,006		70.5%	0.3%
	\$20.00	8	210,131,820	18.4%		157,551,609		52,580,211		75.0%	0.1%
	\$50.00	3	52,026,400	4.6%		40,433,492		11,592,908		77.7%	0.1%
<b>Total</b>		<b>119</b>	<b>\$1,142,967,533</b>			<b>\$793,657,098</b>		<b>\$349,310,435</b>		<b>69.4%</b>	<b>0.8%</b>
2016	\$1.00	15	52,731,750	4.4%		31,875,069		20,856,681		60.4%	-0.1%
thru	\$2.00	27	121,076,620	10.2%		78,798,008		42,278,612		65.1%	-0.6%
1/2/2016	\$3.00	10	93,690,453	7.9%		61,660,312		32,030,141		65.8%	-0.2%
	\$5.00	42	389,480,185	32.7%		264,619,273		124,860,912		67.9%	0.0%
	\$10.00	15	232,036,400	19.5%		162,563,602		69,472,798		70.1%	-0.3%
	\$20.00	10	242,332,560	20.4%		181,613,022		60,719,538		74.9%	0.0%
	\$50.00	3	58,377,300	4.9%		45,402,553		12,974,747		77.8%	0.0%
<b>Total</b>		<b>122</b>	<b>\$1,189,725,268</b>			<b>\$826,531,839</b>		<b>\$363,193,429</b>		<b>69.5%</b>	<b>0.1%</b>
Variance	\$1.00	-2	-4,630,314		-8.1%	-3,179,676	-9.1%	-1,450,638	-6.5%	-0.66%	
2016 to	\$2.00	0	1,323,356		1.1%	-216,715	-0.3%	1,540,071	3.8%	-0.90%	
2015	\$3.00	-2	-18,298,932		-16.3%	-12,151,333	-16.5%	-6,147,599	-16.1%	-0.10%	
	\$5.00	4	23,924,635		6.5%	16,275,434	6.6%	7,649,201	6.5%	0.01%	
	\$10.00	1	5,887,350		2.6%	3,116,558	2.0%	2,770,792	4.2%	-0.45%	
	\$20.00	2	32,200,740		15.3%	24,061,413	15.3%	8,139,327	15.5%	-0.03%	
	\$50.00	0	6,350,900		12.2%	4,969,060	12.3%	1,381,840	11.9%	0.06%	
<b>Total</b>		<b>3</b>	<b>\$46,757,735</b>		<b>4.1%</b>	<b>\$32,874,741</b>	<b>4.1%</b>	<b>\$13,882,994</b>	<b>4.0%</b>	<b>0.03%</b>	

Notes - Scratch Ticket Variances

Texas Lottery Commission  
Scratch Tickets by Price Point  
Sales, Prize Expense, Sales Contribution and Payout Percentage With Year Over Year Changes  
Unaudited

			FY 2016		FY 2015	Difference
Sales	\$1 - \$5		\$656,979,008		\$654,660,263	\$2,318,745
Prize Exp.	\$1 - \$5		\$436,952,662		\$436,224,953	\$727,709
Sales Cont.	\$1 - \$5		\$220,026,346		\$218,435,310	\$1,591,036
Prize Exp. %	\$1 - \$5		66.5%		66.6%	-0.1%
			FY 2016		FY 2015	Difference
Sales	\$10 - \$50		\$532,746,260		\$488,307,270	\$44,438,990
Prize Exp.	\$10 - \$50		\$389,579,177		\$357,432,145	\$32,147,031
Sales Cont.	\$10 - \$50		\$143,167,083		\$130,875,125	\$12,291,959
Prize Exp. %	\$10 - \$50		73.1%		73.2%	-0.1%
			FY 2016		FY 2015	Difference
Sales	Scratch		\$1,189,725,268		\$1,142,967,533	\$46,757,735
Prize Exp.	Scratch		\$826,531,839		\$793,657,098	\$32,874,741
Sales Cont.	Scratch		\$363,193,429		\$349,310,435	\$13,882,994
Prize Exp. %	Scratch		69.5%		69.4%	0.0%

			FY 2016		FY 2015	Difference
Sales	\$1 - \$10		\$889,015,408		\$880,809,313	\$8,206,095
Prize Exp.	\$1 - \$10		\$599,516,264		\$595,671,997	\$3,844,267
Sales Cont.	\$1 - \$10		\$289,499,144		\$285,137,317	\$4,361,828
Prize Exp. %	\$1 - \$10		67.4%		67.6%	-0.2%
			FY 2016		FY 2015	Difference
Sales	\$20 - \$50		\$300,709,860		\$262,158,220	\$38,551,640
Prize Exp.	\$20 - \$50		\$227,015,575		\$197,985,101	\$29,030,474
Sales Cont.	\$20 - \$50		\$73,694,285		\$64,173,119	\$9,521,166
Prize Exp. %	\$20 - \$50		75.5%		75.5%	0.0%
			FY 2016		FY 2015	Difference
Sales	Scratch		\$1,189,725,268		\$1,142,967,533	\$46,757,735
Prize Exp.	Scratch		\$826,531,839		\$793,657,098	\$32,874,741
Sales Cont.	Scratch		\$363,193,429		\$349,310,435	\$13,882,994
Prize Exp. %	Scratch		69.5%		69.4%	0.0%



Texas Lottery Commission  
**Weekly Sales Summary**  
**& Comparison to Previous Week**  
 Unaudited

	Week Ending 1/02/2016		Week Ending 12/26/2015			
	<u>THIS WEEK</u>	% of Sales	<u>LAST WEEK</u>	% of Sales	<u>\$ change</u>	<u>% change</u>
Total Sales	<u>\$104,685,855</u>		<u>\$100,712,382</u>		<u>\$3,973,473</u>	3.95%
Scratch Tickets	<u>\$76,712,975</u>	73.3%	<u>\$78,125,965</u>	77.6%	<u>-\$1,412,990</u>	-1.81%
Lotto	\$2,598,993	2.5%	\$2,422,285	2.4%	\$176,708	7.30%
Lotto Extra	\$446,634	0.4%	\$417,003	0.4%	\$29,631	7.11%
Pick 3	\$4,857,347	4.6%	\$4,863,405	4.8%	-\$6,058	-0.12%
Pick 3 Sum It Up	\$95,570	0.1%	\$91,522	0.1%	\$4,048	4.42%
Cash Five	\$883,605	0.8%	\$860,361	0.9%	\$23,244	2.70%
Texas Two Step	\$857,640	0.8%	\$1,106,519	1.1%	-\$248,879	-22.49%
Mega Millions	\$3,175,442	3.0%	\$2,624,875	2.6%	\$550,567	20.97%
Megaplier	\$756,602	0.7%	\$637,157	0.6%	\$119,445	18.75%
Daily 4	\$1,731,866	1.7%	\$1,725,445	1.7%	\$6,421	0.37%
Daily 4 Sum It Up	\$91,457	0.1%	\$87,146	0.1%	\$4,312	4.95%
Powerball	\$10,213,886	9.8%	\$5,941,638	5.9%	\$4,272,248	71.90%
Power Play	\$1,168,791	1.1%	\$728,720	0.7%	\$440,071	60.39%
All or Nothing	\$559,472	0.5%	\$548,978	0.5%	\$10,494	1.91%
Texas Triple Chance	\$535,576	0.5%	\$531,364	0.5%	\$4,212	0.79%
Total Draw Game Sales	<u>\$27,972,880</u>		<u>\$22,586,417</u>		<u>\$5,386,463</u>	23.85%

\* Totals may not sum due to rounding.

Texas Lottery Commission  
Weekly Sales Summary  
Unaudited

SCRATCH TICKETS  
TOP TEN SELLING GAMES

For the week ending: 1/02/2016

Rank	Price Point	Game	Sales (Millions)
1	\$ 20	HIT \$1,000,000	\$ 5.760
2	\$ 5	HIT \$200,000	\$ 4.455
3	\$ 5	SUPER LOTERIA	\$ 4.124
4	\$ 20	HOLIDAY GAME BOOK	\$ 4.065
5	\$ 10	HAPPY HOLIDAYS	\$ 3.281
6	\$ 10	CASHWORD MULTIPLIER	\$ 2.797
7	\$ 50	DIAMOND DOLLARS	\$ 2.750
8	\$ 20	\$1,000,000 INSTANT CASHOUT	\$ 2.529
9	\$ 20	\$500,000,000 CASH	\$ 2.370
10	\$ 5	HOLIDAY TREASURES	\$ 2.331

Texas Lottery Commission  
Prize Payout Tracking Report  
Unaudited

Through the week ending: 1/02/2016

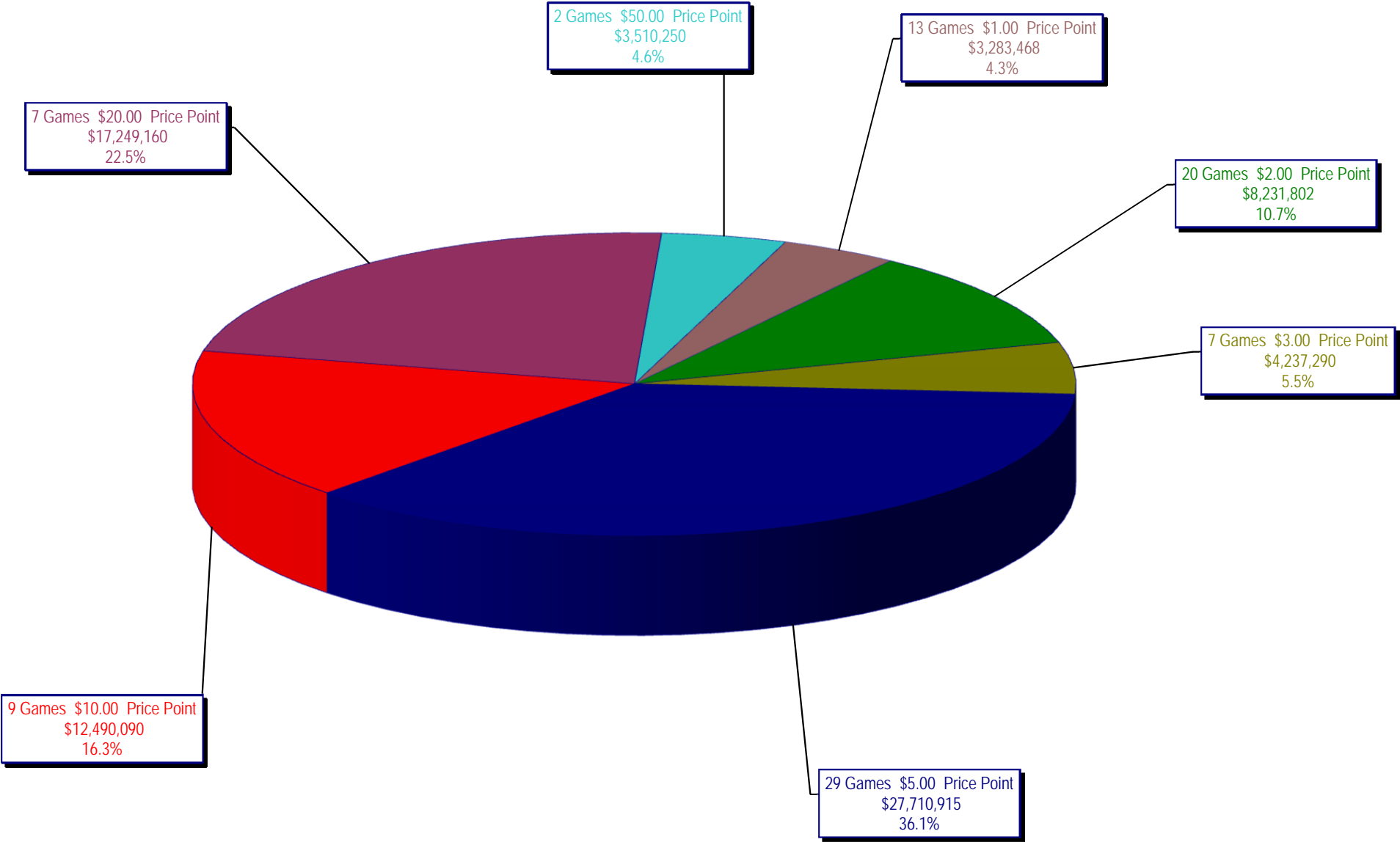
Draw Game Sales

	FY Sales Through Week Ending 1/2/2016	FY Prize Expense Through Week Ending 1/2/2016	Actual* Prize Payout	Base Payout (Prize Pool)
Lotto	\$ 43,135,466	\$ 27,515,469	63.79%	50.00%
Lotto Extra	7,305,942	3,781,858	51.76%	53.70%
Pick 3	85,923,104	42,096,300	48.99%	50.00%
Pick 3 Sum It Up	1,704,240	829,069	48.65%	50.00%
Cash Five	15,794,085	7,897,043	50.00%	50.00%
Texas Two Step	17,696,064	8,946,560	50.56%	50.00%
Mega Millions	43,763,753	22,407,806	51.20%	50.00%**
Megaplier	10,901,380	5,475,026	50.22%	N/A
Daily 4	29,710,064	14,827,250	49.91%	50.00%
Daily 4 Sum It Up	1,532,292	549,078	35.83%	50.00%
Powerball	77,421,781	38,892,804	50.23%	50.00%**
Power Play	9,912,058	4,978,964	50.23%	N/A
All or Nothing	10,601,604	5,454,638	51.45%	55.98%
Texas Triple Chance	9,348,445	5,647,176	60.41%	54.42%
<b>Totals</b>	<b>\$ 364,750,277</b>	<b>\$ 189,299,039</b>	<b>51.90%</b>	

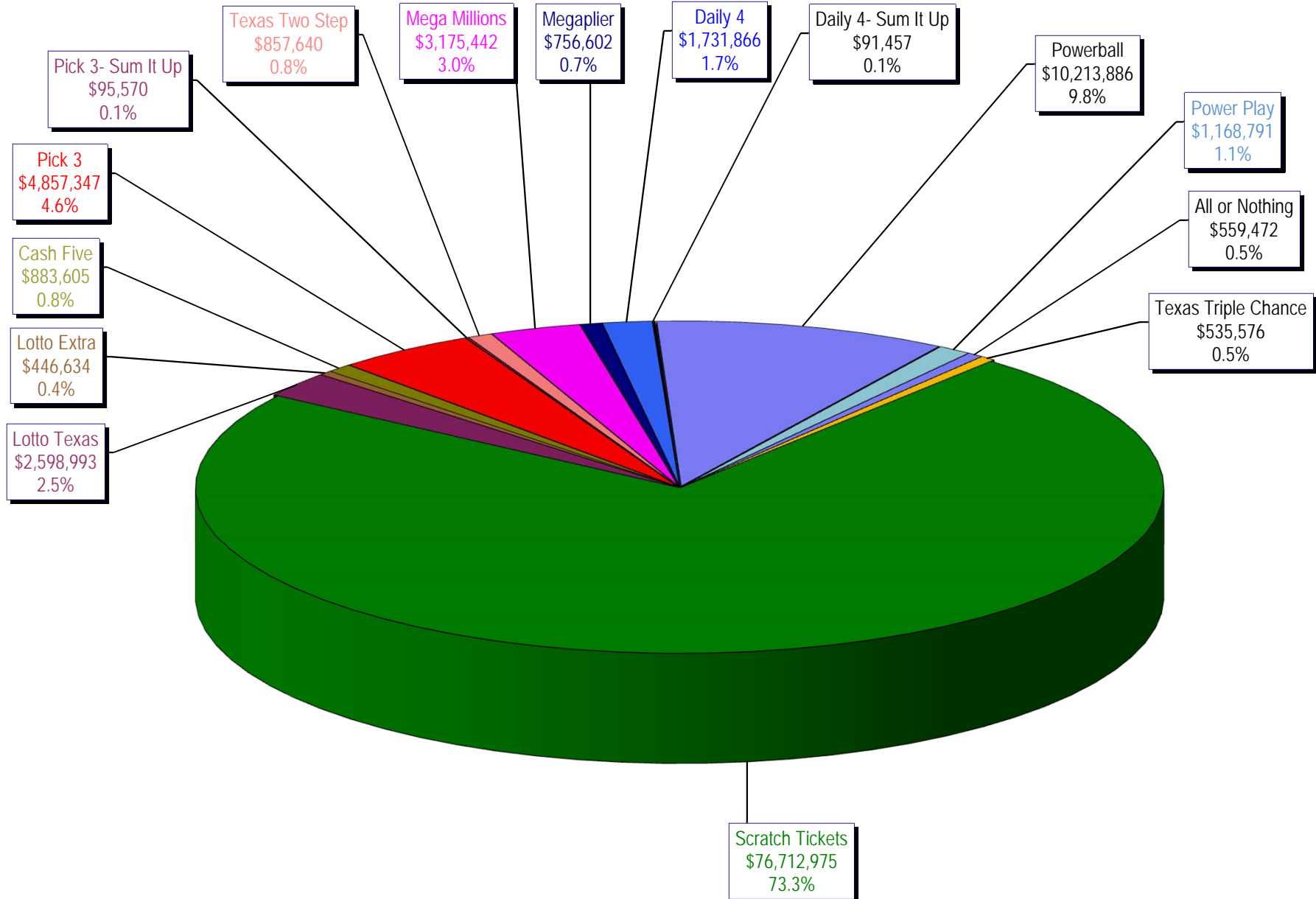
\* Before Unclaimed Prizes

\*\* Estimated; depends on # of guaranteed prizes won in Texas

Texas Lottery Commission  
Scratch Ticket Sales  
For the week ending 1/02/16  
(Unaudited)



**Texas Lottery Commission**  
**All Game Sales**  
**For the week ending 1/02/16**  
**(Unaudited)**



Texas Lottery Commission - Weekly Sales Summary for FY 2016 (Unaudited)

Week Ended	Scratch Tickets	New Games & Dates	Lotto Texas	Jackpot W	S	Lotto Extra	Pick 3	Pick 3 Sum It Up	Cash Five	Texas Two Step	Jackpot M	TH	Mega Millions	Jackpot T	F	Megaplier	Daily 4	Daily 4 Sum It Up	Powerball	Jackpot W	S	Power Play	All or Nothing	Monopoly	Jackpot F	Texas Triple Chance	Total	Per Cap.
9/5/2015*	66,843,870	0	2,788,509	25	26	466,121	5,249,348	117,979	956,126	1,253,100	425	575	2,366,640	74	85	608,901	1,725,027	93,067	3,586,482	120	133	484,769	675,614	0			87,215,551	3.24
9/12/2015	61,566,291	1717 (\$1.N); 1718 (\$5.N); 1748 (\$10.N); 1696 (\$3.N) - 9/08/15	2,793,426	26.5	27.75	465,451	4,974,238	103,203	919,536	1,423,604	725	950	2,511,039	95	106	629,091	1,641,226	86,539	3,927,126	149	167	518,060	638,384	0			82,197,213	3.05
9/19/2015	63,530,657	0	2,845,557	28.25	29.5	475,307	4,715,566	95,242	928,275	854,109	200	225	1,817,155	15	20	487,946	1,647,829	81,483	5,082,782	185	208	639,614	656,388	0			83,857,910	3.11
9/26/2015	61,731,400	1720 (\$2.N); 1721 (\$5.N); 1715 (\$5.N) - 9/21/15	2,815,638	30	30.75	468,584	4,735,629	97,118	924,334	1,048,752	300	450	1,860,438	25	31	499,201	1,628,350	82,200	6,648,092	235	267	790,427	653,528	0			83,983,690	3.12
10/3/2015	67,048,415	0	3,034,763	31.5	32.25	502,043	4,925,789	100,522	919,217	1,347,552	600	725	2,053,673	39	47	539,290	1,662,320	88,291	8,036,576	301	40	884,785	616,594	0		725,376	92,485,206	3.43
10/10/2015	66,049,706	1722 (\$1.N); 1723 (\$5.N); 1711 (\$20.N) - 10/05/15	2,175,801	5	5.25	366,506	4,803,855	97,005	899,614	1,141,865	925	200	2,113,720	55	65	535,411	1,636,542	86,150	2,572,748	50	60	372,480	593,616	0		743,664	84,188,683	3.12
10/17/2015	65,073,593	0	2,133,286	5	5	358,076	4,629,752	92,453	876,040	824,622	200	225	2,286,703	75	84	568,477	1,576,323	79,576	2,638,956	70	80	377,157	580,870	0		754,124	82,850,007	3.07
10/24/2015	64,087,437	1724 (\$2.N); 1768 (\$5.N); 1726 (\$10.N) - 10/19/15	2,099,176	5.25	5.5	358,217	4,515,381	92,071	860,960	991,931	300	425	2,600,946	93	105	626,019	1,553,788	80,225	2,946,077	90	100	411,192	562,378	0		752,104	82,537,901	3.06
10/31/2015	66,025,374	0	2,165,101	5.75	6	368,559	4,653,961	91,360	873,751	944,275	550	200	2,945,749	117	129	695,705	1,621,009	85,560	3,327,954	110	127	455,266	573,258	0		766,642	85,593,524	3.18
11/7/2015	68,137,192	1727 (\$1.N); 1728 (\$2.N); 1729 (\$5.N) - 11/02/15	2,232,267	6.25	6.5	379,508	4,977,693	96,887	891,111	911,796	225	300	3,416,380	144	164	795,028	1,688,298	86,418	3,071,581	142	40	425,312	599,980	0		826,093	88,535,543	3.28
11/14/2015	65,449,428	0	2,185,621	6.75	7	373,102	4,726,211	93,030	870,215	1,087,101	425	575	4,139,462	180	200	938,757	1,614,727	82,536	2,437,413	50	60	357,760	574,596	0		688,852	85,618,810	3.18
11/21/2015	68,364,421	1730 (\$2.N); 1783 (\$2.N); 1731 (\$5.N) - 11/16/15 1778 (\$2.N) - 11/18/15	2,173,857	7.25	7.5	369,519	4,674,293	88,988	862,630	825,054	200	225	1,830,909	15	20	489,485	1,632,096	82,077	2,553,907	70	80	370,594	586,348	0		634,850	85,539,027	3.17
11/28/2015	61,091,628	0	2,113,171	7.75	8.25	364,947	4,523,108	87,438	825,047	904,825	300	400	1,785,419	25	31	478,828	1,591,416	82,363	2,886,666	90	100	406,251	546,614	0		572,902	78,260,621	2.90
12/5/2015	67,830,827	1733 (\$5.N) - 12/5/15	2,245,481	8.75	9.5	385,346	5,020,926	94,445	898,598	957,116	525	200	2,073,099	39	47	545,451	1,789,318	94,198	3,432,248	110	127	467,917	603,222	0		645,054	87,083,245	3.23
12/12/2015	68,324,452	1751 (\$1.N); 1780 (\$2.N); 1784 (\$5.N) - 12/07/15	2,281,004	10.25	10.75	391,281	4,980,397	94,549	877,611	815,777	225	200	2,160,601	57	66	555,974	1,746,314	86,684	3,835,044	145	164	508,111	592,212	0		603,850	87,853,860	3.26
12/19/2015	71,041,258	0	2,326,771	11.5	12.25	400,223	4,980,685	95,154	879,423	888,674	225	300	2,322,855	74	85	592,792	1,796,682	92,401	4,707,013	180	202	600,420	573,754	0		567,994	91,866,098	3.41
12/26/2015	78,125,965	1736 (\$5.N); 1740 (\$20.N) - 12/21/15 1789 (\$3.N) - 12/22/15	2,422,285	12.75	13.5	417,003	4,863,405	91,522	860,361	1,106,519	400	550	2,624,875	94	104	637,157	1,725,445	87,146	5,941,638	227	255	728,720	548,978	0		531,364	100,712,382	3.74
1/2/2016	76,712,975	0	2,598,993	14.25	15.25	446,634	4,857,347	95,570	883,605	857,640	200	225	3,175,442	117	130	756,602	1,731,866	91,457	10,213,886	300	334	1,168,791	559,472	0		535,576	104,685,855	3.88
weekly change	-1.8%		7.3%			7.1%	-0.1%	4.4%	2.7%	-22.5%		21.0%			18.7%	0.4%	4.9%	71.9%		60.4%	1.9%	0.0%			0.8%	3.9%		
<b>SALES</b>	<b>SALES</b>	<b>SALES</b>	<b>SALES</b>	<b>SALES</b>	<b>SALES</b>	<b>SALES</b>	<b>SALES</b>	<b>SALES</b>	<b>SALES</b>	<b>SALES</b>	<b>SALES</b>	<b>SALES</b>	<b>SALES</b>	<b>SALES</b>	<b>SALES</b>	<b>SALES</b>	<b>SALES</b>	<b>SALES</b>	<b>SALES</b>	<b>SALES</b>	<b>SALES</b>	<b>SALES</b>	<b>SALES</b>	<b>SALES</b>	<b>SALES</b>	<b>SALES</b>	<b>SALES</b>	<b>% of Sales</b>
Calendar Year to date	3,535,999,525		124,676,677			20,579,495	252,522,159	5,281,088	49,136,210	54,537,682		137,363,474			33,688,499	87,565,373	4,779,031	217,235,944		27,702,368	35,145,994	(390)			9,162,331	4,594,995,459	100.0%	
Fiscal Year to date 2016	1,189,725,268		43,135,466			7,305,942	85,923,104	1,704,240	15,794,085	17,696,064		43,763,753			10,901,380	29,710,064	1,532,292	77,421,781		9,912,058	10,601,604	0			9,348,445	1,554,475,545	100.0%	
*Full week includes 2 days from FY15																												