



*WEEKLY SALES SUMMARY*

Unaudited

**Week Ending: 01/05/2013**

Texas Lottery Commission  
Fiscal Year to Date Sales Comparison  
Unaudited

Through the week ending 01/05/2013 (19 weeks)

Sales by Game	FY 2011 *	FY 2012 **	FY 2013	\$ Change		% Change	
				FY 2013 to FY 2011	FY 2013 to FY 2012	FY 2013 to FY 2011	FY 2013 to FY 2012
Instants	\$ 990,260,588	\$ 1,013,218,438	\$ 1,062,050,388	\$ 71,789,800	\$ 48,831,950	7.2%	4.8%
Lotto Texas	60,596,205	62,138,294	55,869,238	-4,726,967	-6,269,056	-7.8%	-10.1%
Pick 3	96,580,320	93,711,171	92,603,712	-3,976,608	-1,107,459	-4.1%	-1.2%
Pick 3 Sum It Up	1,960,897	1,906,929	1,737,066	-223,831	-169,863	-11.4%	-8.9%
Cash Five	22,877,024	22,825,122	19,822,113	-3,054,911	-3,003,009	-13.4%	-13.2%
Texas Two Step	17,223,518	21,626,442	20,121,295	2,897,777	-1,505,147	16.8%	-7.0%
Mega Millions	73,606,459	55,662,884	36,748,925	-36,857,534	-18,913,959	-50.1%	-34.0%
Megaplier	14,191,162	12,238,028	8,565,983	-5,625,179	-3,672,045	-39.6%	-30.0%
Daily 4	20,025,694	22,105,351	24,360,290	4,334,596	2,254,940	21.6%	10.2%
Daily 4 Sum It Up	1,576,860	1,637,938	1,623,942	47,082	-13,996	3.0%	-0.9%
Powerball	29,511,170	43,767,209	105,653,137	76,141,967	61,885,928	258.0%	141.4%
Power Play	7,154,781	9,631,270	10,401,140	3,246,359	769,870	45.4%	8.0%
All or Nothing	-	-	32,553,968	32,553,968	32,553,968	-	-
<b>Total</b>	<b>\$ 1,335,564,677</b>	<b>\$ 1,360,469,075</b>	<b>\$ 1,472,111,197</b>	<b>\$ 136,546,520</b>	<b>\$ 111,642,122</b>	<b>10.2%</b>	<b>8.2%</b>

\* 3 extra days

\*\* 2 extra days

Texas Lottery Commission  
 Fiscal Year to Date Cumulative Average Sales Comparison  
 Unaudited

Through the week ending 01/05/2013 (19 weeks)

Sales by Game	FY 2011	FY 2012	FY 2013
Instant	\$ 7,617,389	\$ 7,854,406	\$ 8,362,601
Lotto Texas	466,125	481,692	439,915
Pick 3	742,926	726,443	729,163
Pick 3 Sum It Up	15,084	14,782	13,678
Cash Five	175,977	176,939	156,080
Texas Two Step	132,489	167,647	158,435
Mega Millions	566,204	431,495	289,362
Megaplier	109,163	94,868	67,449
Daily 4	154,044	171,359	191,813
Daily 4 Sum It Up	12,130	12,697	12,787
Powerball	227,009	339,281	831,914
Power Play	55,037	74,661	81,899
All or Nothing	-	-	273,563 *
<b>Total</b>	<b>\$ <u>10,273,574</u></b>	<b>\$ <u>10,546,272</u></b>	<b>\$ <u>11,608,659</u></b>
	thru 01/08/2011 130 days	thru 01/07/2012 129 days	thru 01/05/2013 127 days * 119 days

Texas Lottery Commission  
Fiscal Year Over Year Change in Sales  
Unaudited  
FY 2013 Compared to FY 2012

Week	FY 2013 Week Ending	INSTANT TICKETS				DRAW GAMES				TOTAL SALES			
		FY 2013	FY 2012	Difference	% change - Cumulative Sales	FY 2013	FY 2012	Difference	% change - Cumulative Sales	FY 2013	FY 2012	Difference	% change - Cumulative Sales
1	9/1/2012**	\$9,611,328	\$25,147,181	(\$15,535,853)	-61.8%	\$3,712,535	\$9,704,561	(\$5,992,026)	-61.7%	\$13,323,863	\$34,851,742	(\$21,527,879)	-61.8%
2	9/8/2012	\$56,941,761	\$50,591,068	\$6,350,693	12.6%	\$19,305,417	\$17,681,853	\$1,623,564	9.2%	\$76,247,178	\$68,272,921	\$7,974,257	11.7%
3	9/15/2012	\$56,302,875	\$49,835,063	\$6,467,812	13.0%	\$20,857,230	\$16,842,326	\$4,014,904	23.8%	\$77,160,105	\$66,677,389	\$10,482,716	15.7%
4	9/22/2012	\$54,974,438	\$49,777,138	\$5,197,300	10.4%	\$20,570,277	\$17,504,800	\$3,065,477	17.5%	\$75,544,715	\$67,281,938	\$8,262,777	12.3%
5	9/29/2012	\$54,606,674	\$51,040,274	\$3,566,400	7.0%	\$20,462,690	\$18,653,100	\$1,809,591	9.7%	\$75,069,364	\$69,693,374	\$5,375,991	7.7%
6	10/6/2012	\$59,223,327	\$53,715,157	\$5,508,170	10.3%	\$19,279,973	\$17,225,680	\$2,054,293	11.9%	\$78,503,300	\$70,940,837	\$7,562,463	10.7%
7	10/13/2012	\$57,075,606	\$51,942,121	\$5,133,485	9.9%	\$18,638,467	\$17,854,980	\$783,487	4.4%	\$75,714,073	\$69,797,101	\$5,916,972	8.5%
8	10/20/2012	\$56,630,134	\$52,837,769	\$3,792,365	7.2%	\$18,998,943	\$19,558,519	(\$559,577)	-2.9%	\$75,629,077	\$72,396,288	\$3,232,789	4.5%
9	10/27/2012	\$55,789,743	\$52,206,644	\$3,583,099	6.9%	\$20,130,190	\$21,504,565	(\$1,374,376)	-6.4%	\$75,919,933	\$73,711,209	\$2,208,724	3.0%
10	11/3/2012	\$58,142,777	\$56,265,310	\$1,877,467	3.3%	\$20,638,008	\$20,870,086	(\$232,079)	-1.1%	\$78,780,785	\$77,135,396	\$1,645,389	2.1%
11	11/10/2012	\$57,484,804	\$55,682,645	\$1,802,159	3.2%	\$20,862,872	\$17,862,404	\$3,000,468	16.8%	\$78,347,676	\$73,545,049	\$4,802,627	6.5%
12	11/17/2012	\$55,805,228	\$54,978,079	\$827,149	1.5%	\$21,660,705	\$17,879,985	\$3,780,721	21.1%	\$77,465,933	\$72,858,064	\$4,607,870	6.3%
13	11/24/2012	\$61,331,977	\$53,942,448	\$7,389,529	13.7%	\$27,172,853	\$16,877,145	\$10,295,708	61.0%	\$88,504,830	\$70,819,593	\$17,685,237	25.0%
14	12/1/2012	\$58,420,598	\$57,153,469	\$1,267,129	2.2%	\$62,797,943	\$18,298,636	\$44,499,307	243.2%	\$121,218,541	\$75,452,105	\$45,766,436	60.7%
15	12/8/2012	\$62,489,745	\$55,318,284	\$7,171,461	13.0%	\$19,630,155	\$19,033,326	\$596,829	3.1%	\$82,119,900	\$74,351,610	\$7,768,290	10.4%
16	12/15/2012	\$59,661,880	\$58,612,629	\$1,049,251	1.8%	\$20,064,982	\$20,045,279	\$19,704	0.1%	\$79,726,862	\$78,657,908	\$1,068,955	1.4%
17	12/22/2012	\$63,556,886	\$60,628,256	\$2,928,630	4.8%	\$19,084,653	\$22,572,986	(\$3,488,333)	-15.5%	\$82,641,539	\$83,201,242	(\$559,703)	-0.7%
18	12/29/2012	\$63,547,886	\$63,065,007	\$482,879	0.8%	\$17,359,874	\$19,948,521	(\$2,588,647)	-13.0%	\$80,907,760	\$83,013,528	(\$2,105,768)	-2.5%
19	1/5/2013	\$60,452,721	\$60,479,896	(\$27,175)	0.0%	\$18,833,047	\$17,331,888	\$1,501,159	8.7%	\$79,285,768	\$77,811,784	\$1,473,984	1.9%
20	1/12/2013		\$57,689,526				\$17,568,732				\$75,258,258		
21	1/19/2013		\$58,704,854				\$19,886,540				\$78,591,394		
22	1/26/2013		\$57,611,325				\$20,641,697				\$78,253,022		
23	2/2/2013		\$65,553,366				\$23,689,855				\$89,243,221		
24	2/9/2013		\$75,070,485				\$28,361,583				\$103,432,068		
25	2/16/2013		\$66,679,947				\$19,588,615				\$86,268,562		
26	2/23/2013		\$64,868,899				\$19,965,388				\$84,834,287		
27	3/2/2013		\$67,135,065				\$20,947,181				\$88,082,246		
28	3/9/2013		\$68,299,006				\$22,152,639				\$90,451,645		
29	3/16/2013		\$65,013,692				\$23,351,718				\$88,365,410		
30	3/23/2013		\$64,035,255				\$27,416,609				\$91,451,864		
31	3/30/2013		\$65,135,991				\$84,628,987				\$149,764,978		
32	4/6/2013		\$66,860,957				\$19,899,400				\$86,760,357		
33	4/13/2013		\$64,028,898				\$20,220,141				\$84,249,039		
34	4/20/2013		\$63,623,892				\$20,974,282				\$84,598,174		
35	4/27/2013		\$61,743,623				\$20,267,388				\$82,011,011		
36	5/4/2013		\$64,851,962				\$20,642,982				\$85,494,944		
37	5/11/2013		\$65,472,556				\$19,140,768				\$84,613,324		
38	5/18/2013		\$60,572,658				\$18,342,814				\$78,915,472		
39	5/25/2013		\$58,959,028				\$18,618,060				\$77,577,088		
40	6/1/2013		\$57,409,086				\$19,014,645				\$76,423,731		
41	6/8/2013		\$59,845,545				\$20,527,958				\$80,373,503		
42	6/15/2013		\$57,021,498				\$19,386,186				\$76,407,684		

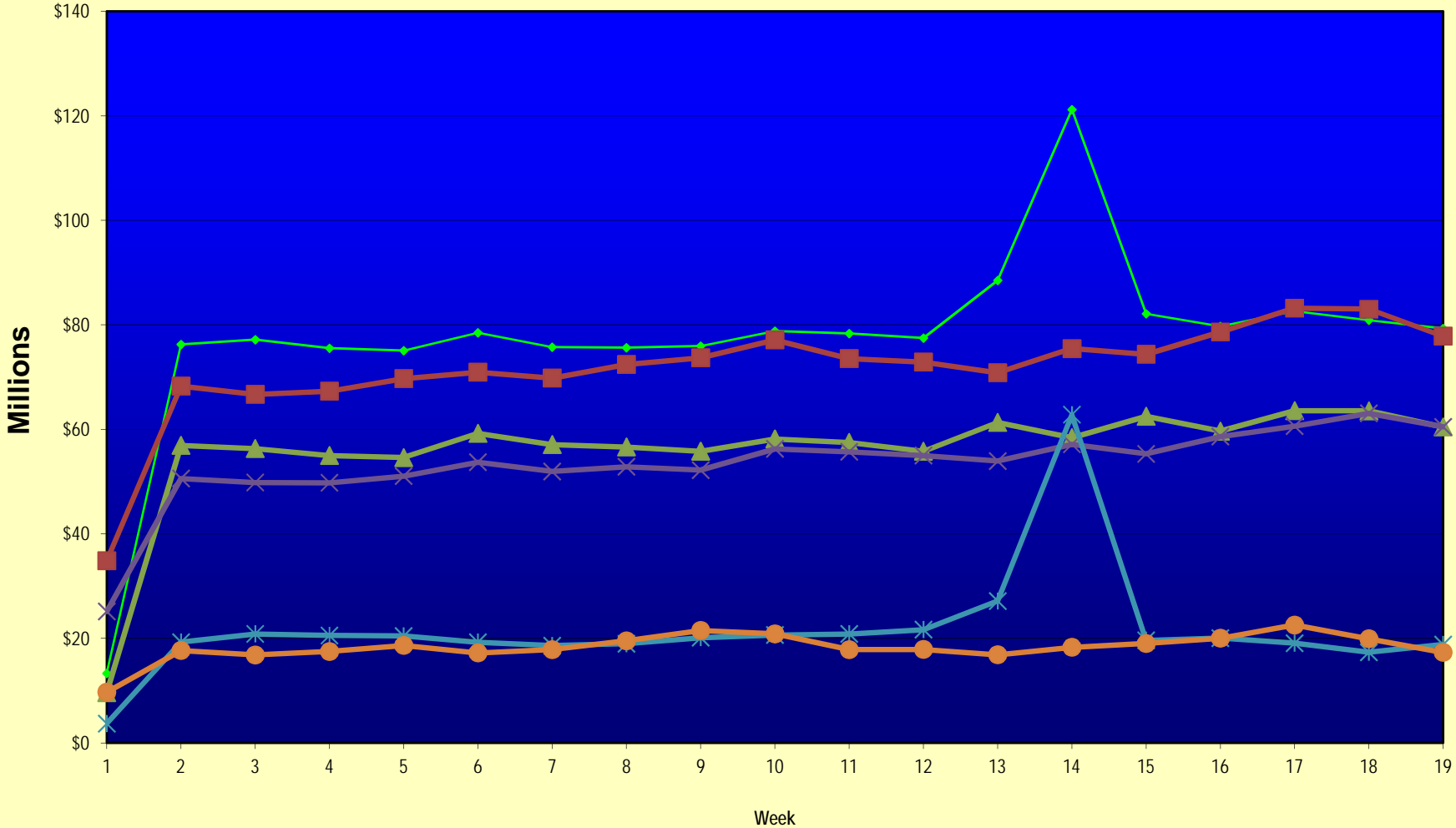
Note: Week 1 is not a full week of sales as this report is prepared on a Fiscal Year basis.

Texas Lottery Commission  
Fiscal Year Over Year Change in Sales  
Unaudited  
FY 2013 Compared to FY 2012

Week	FY 2013 Week Ending	INSTANT TICKETS				DRAW GAMES				TOTAL SALES			
		FY 2013	FY 2012	Difference	% change - Cumulative Sales	FY 2013	FY 2012	Difference	% change - Cumulative Sales	FY 2013	FY 2012	Difference	% change - Cumulative Sales
43	6/22/2013		\$57,892,076				\$17,594,154				\$75,486,230		
44	6/29/2013		\$57,497,435				\$18,153,658				\$75,651,093		
45	7/6/2013		\$60,345,000				\$19,059,152				\$79,404,152		
46	7/13/2013		\$57,683,321				\$18,751,043				\$76,434,364		
47	7/20/2013		\$57,083,343				\$18,769,201				\$75,852,544		
48	7/27/2013		\$54,006,781				\$18,934,103				\$72,940,884		
49	8/3/2013		\$56,557,409				\$20,206,705				\$76,764,114		
50	8/10/2013		\$57,799,452				\$22,832,120				\$80,631,572		
51	8/17/2013		\$54,845,724				\$25,435,624				\$80,281,348		
52	8/24/2013		\$55,661,277				\$17,524,474				\$73,185,751		
	8/31/2013		\$47,363,984				\$14,929,528				\$62,293,512		
Total thru Current Week		\$1,062,050,388	\$1,013,218,438	\$48,831,950	4.8%	\$410,060,809	\$347,250,637	\$62,810,172	18.1%	\$1,472,111,197	\$1,360,469,075	\$111,642,122	8.2%
Fiscal Year Total		\$1,062,050,388	\$3,086,141,354			\$410,060,809	\$1,104,674,559			\$1,472,111,197	\$4,190,815,913		

\*\* FY 2012 includes 3 days; FY 2013 includes 1 day.

### Texas Lottery Commission Fiscal Year Over Year Change in Sales



◆ Total Sales 2013   
 ■ Total Sales 2012   
 ▲ Instant Tickets 2013   
 × Instant Tickets 2012   
 ✱ Draw Games 2013   
 ● Draw Games 2012

Note: Week 1 is not a full week of sales as this report is prepared on a Fiscal Year basis.

Texas Lottery Commission  
**Instant Tickets by Price Point**  
Sales, Prize Expense, Sales Contribution and Payout Percentage With Year Over Year Changes  
Unaudited

Fiscal Year	Price Point	# of Active Games	FY Sales	% of Instant Ticket Sales	Year over Year Change in Sales	FY Prize Expense	Year over Year Change in Prize Expense	FY Sales Contribution	Year over Year Change in Contribution	Average Prize Payout %	Year over Year Change in Payout %
2012	\$1.00	26	76,653,381	7.6%		47,128,842		29,524,539		61.5%	1.2%
thru	\$2.00	26	139,735,656	13.8%		90,851,190		48,884,466		65.0%	-0.8%
1/7/2012	\$3.00	15	125,343,270	12.4%		82,222,662		43,120,608		65.6%	0.0%
	\$5.00	35	320,127,440	31.6%		217,935,460		102,191,980		68.1%	0.2%
	\$7.00	4	18,149,831	1.8%		12,341,766		5,808,065		68.0%	0.0%
	\$10.00	14	160,482,260	15.8%		113,008,052		47,474,208		70.4%	-0.8%
	\$20.00	5	142,805,000	14.1%		106,532,038		36,272,962		74.6%	-0.1%
	\$50.00	2	29,921,600	3.0%		23,240,664		6,680,936		77.7%	0.1%
<b>Total</b>		<b>127</b>	<b>\$1,013,218,438</b>			<b>\$693,260,675</b>		<b>\$319,957,763</b>		<b>68.4%</b>	<b>-0.1%</b>
2013	\$1.00	26	64,648,794	6.1%		39,771,095		24,877,699		61.5%	1.5%
thru	\$2.00	28	136,347,510	12.8%		88,640,388		47,707,122		65.0%	-0.1%
1/5/2013	\$3.00	14	134,904,246	12.7%		88,475,431		46,428,815		65.6%	0.1%
	\$5.00	43	326,477,875	30.7%		221,715,465		104,762,410		67.9%	-0.1%
	\$7.00	2	15,156,463	1.4%		10,301,336		4,855,127		68.0%	0.0%
	\$10.00	11	180,788,750	17.0%		127,659,407		53,129,343		70.6%	-0.4%
	\$20.00	7	154,465,100	14.5%		115,632,396		38,832,704		74.9%	0.1%
	\$50.00	3	49,261,650	4.6%		38,246,789		11,014,861		77.6%	0.0%
<b>Total</b>		<b>134</b>	<b>\$1,062,050,388</b>			<b>\$730,442,306</b>		<b>\$331,608,082</b>		<b>68.8%</b>	<b>0.2%</b>
Variance	\$1.00	0	-12,004,587		-15.7%	-7,357,748	-15.6%	-4,646,839	-15.7%	0.04%	
2013 to	\$2.00	2	-3,388,146		-2.4%	-2,210,802	-2.4%	-1,177,344	-2.4%	-0.01%	
2012	\$3.00	-1	9,560,976		7.6%	6,252,769	7.6%	3,308,207	7.7%	-0.01%	
	\$5.00	8	6,350,435		2.0%	3,780,004	1.7%	2,570,431	2.5%	-0.17%	
	\$7.00	-2	-2,993,368		-16.5%	-2,040,430	-16.5%	-952,938	-16.4%	-0.03%	
	\$10.00	-3	20,306,490		12.7%	14,651,354	13.0%	5,655,136	11.9%	0.19%	
	\$20.00	2	11,660,100		8.2%	9,100,358	8.5%	2,559,742	7.1%	0.26%	
	\$50.00	1	19,340,050		64.6%	15,006,125	64.6%	4,333,925	64.9%	-0.03%	
<b>Total</b>		<b>7</b>	<b>\$48,831,950</b>		<b>4.8%</b>	<b>\$37,181,631</b>	<b>5.4%</b>	<b>\$11,650,319</b>	<b>3.6%</b>	<b>0.35%</b>	

Notes - Instant Ticket Variances

Texas Lottery Commission  
**Instant Tickets by Price Point**  
**Sales, Prize Expense, Sales Contribution and Payout Percentage With Year Over Year Changes**  
 Unaudited

			FY 2013		FY 2012	Difference
Sales	\$1 - \$7	1	\$677,534,888		\$680,009,578	-\$2,474,690
Prize Exp.	\$1 - \$7	1	\$448,903,714		\$450,479,921	-\$1,576,207
Sales Cont.	\$1 - \$7	1	\$228,631,174		\$229,529,657	-\$898,483
Prize Exp. %	\$1 - \$7	1	66.3%		66.2%	0.0%
			FY 2013		FY 2012	Difference
Sales	\$10 - \$50	2	\$384,515,500		\$333,208,860	\$51,306,640
Prize Exp.	\$10 - \$50	2	\$281,538,592		\$242,780,755	\$38,757,837
Sales Cont.	\$10 - \$50	1	\$102,976,908		\$90,428,105	\$12,548,803
Prize Exp. %	\$10 - \$50	2	73.2%		72.9%	0.4%
			FY 2013		FY 2012	Difference
Sales	Instant		\$1,062,050,388		\$1,013,218,438	\$48,831,950
Prize Exp.	Instant		\$730,442,306		\$693,260,675	\$37,181,631
Sales Cont.	Instant		\$331,608,082		\$319,957,763	\$11,650,319
Prize Exp. %	Instant		68.8%		68.4%	0.4%

			FY 2013		FY 2012	Difference
Sales	\$1 - \$10		\$858,323,638		\$840,491,838	\$17,831,800
Prize Exp.	\$1 - \$10		\$576,563,121		\$563,487,973	\$13,075,148
Sales Cont.	\$1 - \$10		\$281,760,517		\$277,003,865	\$4,756,652
Prize Exp. %	\$1 - \$10		67.2%		67.0%	0.1%
			FY 2013		FY 2012	Difference
Sales	\$20 - \$50		\$203,726,750		\$172,726,600	\$31,000,150
Prize Exp.	\$20 - \$50		\$153,879,185		\$129,772,702	\$24,106,483
Sales Cont.	\$20 - \$50		\$49,847,565		\$42,953,898	\$6,893,667
Prize Exp. %	\$20 - \$50		75.5%		75.1%	0.4%
			FY 2013		FY 2012	Difference
Sales	Instant		\$1,062,050,388		\$1,013,218,438	\$48,831,950
Prize Exp.	Instant		\$730,442,306		\$693,260,675	\$37,181,631
Sales Cont.	Instant		\$331,608,082		\$319,957,763	\$11,650,319
Prize Exp. %	Instant		68.8%		68.4%	0.4%



Texas Lottery Commission  
**Weekly Sales Summary**  
**& Comparison to Previous Week**  
 Unaudited

	Week Ending 01/05/2013		Week Ending 12/29/2012			
	<u>THIS WEEK</u>	% of Sales	<u>LAST WEEK</u>	% of Sales	<u>\$ change</u>	<u>% change</u>
Total Sales	<u>\$79,285,768</u>		<u>\$80,907,760</u>		<u>-\$1,621,992</u>	-2.00%
Instant Tickets	<u>\$60,452,721</u>	76.2%	<u>\$63,547,886</u>	78.5%	<u>-\$3,095,165</u>	-4.87%
Lotto	\$2,962,822	3.7%	\$2,869,329	3.5%	\$93,493	3.26%
Pick 3	\$5,157,831	6.5%	\$4,868,470	6.0%	\$289,361	5.94%
Pick 3 Sum It Up	\$97,210	0.1%	\$90,224	0.1%	\$6,986	7.74%
Cash Five	\$1,098,429	1.4%	\$1,041,264	1.3%	\$57,165	5.49%
Texas Two Step	\$1,363,512	1.7%	\$922,869	1.1%	\$440,643	47.75%
Mega Millions	\$1,865,613	2.4%	\$1,670,747	2.1%	\$194,866	11.66%
Megaplier	\$443,570	0.6%	\$400,587	0.5%	\$42,983	10.73%
Daily 4	\$1,396,145	1.8%	\$1,289,758	1.6%	\$106,387	8.25%
Daily 4 Sum It Up	\$87,787	0.1%	\$79,651	0.1%	\$8,136	10.21%
Powerball	\$2,524,666	3.2%	\$2,413,294	3.0%	\$111,372	4.61%
Power Play	\$339,142	0.4%	\$324,222	0.4%	\$14,920	4.60%
All or Nothing	\$1,496,322	1.9%	\$1,389,460	1.7%	\$106,862	7.69%
Total Draw Game Sales	<u>\$18,833,047</u>		<u>\$17,359,874</u>		<u>\$1,473,173</u>	8.49%

Totals may not sum due to rounding.

Texas Lottery Commission  
Weekly Sales Summary  
Unaudited

INSTANT TICKETS  
TOP TEN SELLING GAMES

For the Week Ending: 01/05/13

Rank	Price Point	Game	Sales (Millions)
1	\$ 5	GOLDEN SPADES	\$ 3.265
2	\$ 20	\$500 MILLION EXTREME CASH BLAST	\$ 2.432
3	\$ 50	\$7,500,000 FORTUNE	\$ 2.424
4	\$ 20	MERRY MILLIONS	\$ 2.344
5	\$ 10	HOLIDAY DOUBLER	\$ 2.331
6	\$ 3	LOTERIA TEXAS	\$ 2.291
7	\$ 10	\$200 MILLION CASH SPECTACULAR	\$ 2.161
8	\$ 5	\$100,000 CASH	\$ 2.146
9	\$ 3	BONUS CASHWORD	\$ 1.904
10	\$ 5	HAPPY HOLIDAYS	\$ 1.848

Texas Lottery Commission  
Prize Payout Tracking Report  
Unaudited

Through Week Ending 01/05/13

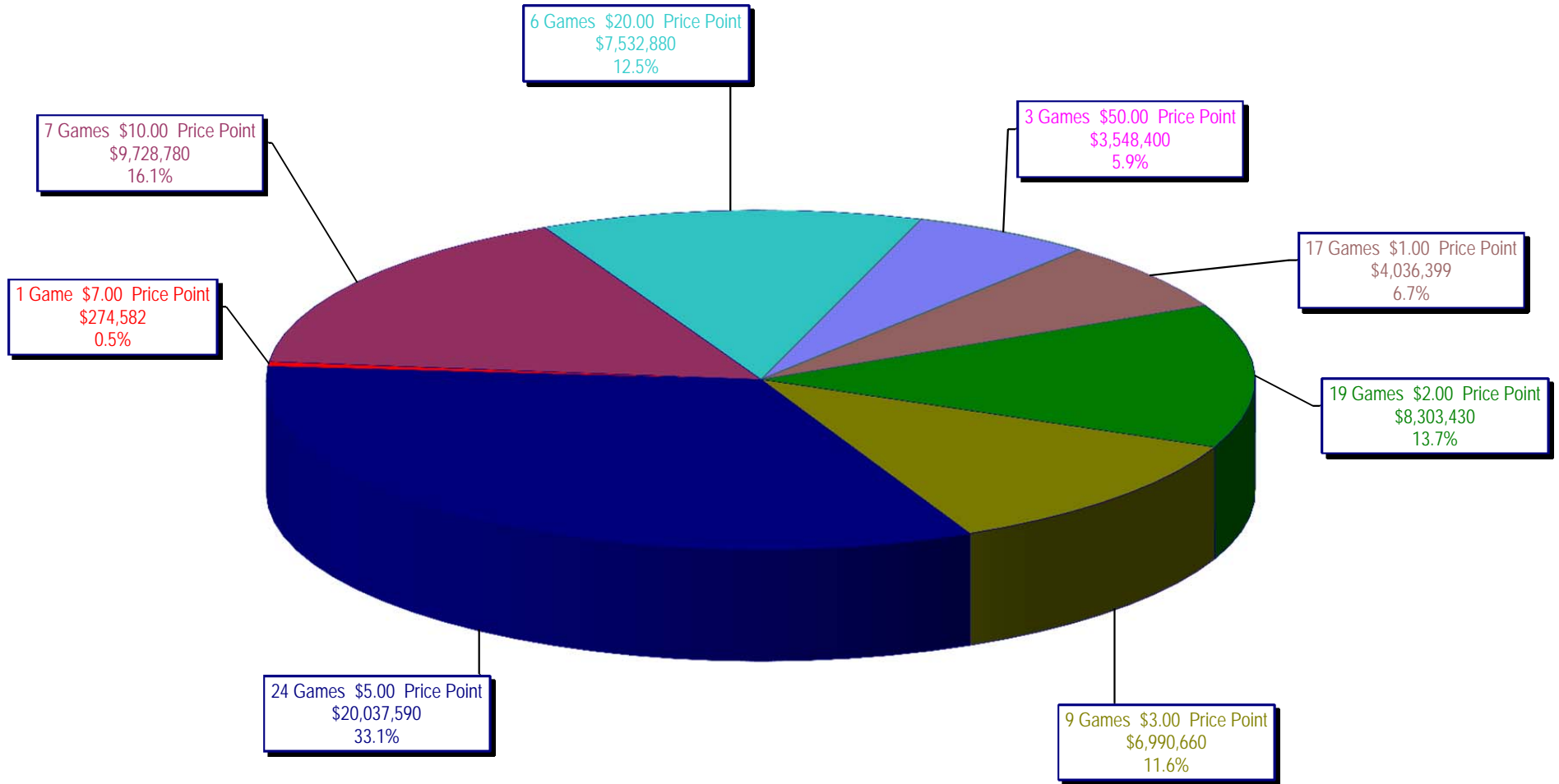
Draw Game Sales

		FY Sales Through Week Ending 1/5/2013		FY Prize Expense Through Week Ending 1/5/2013	Actual* Prize Payout	Base Payout (Prize Pool)
Lotto	\$	55,869,238	\$	39,676,496	71.02%	50.00%
Pick 3		92,603,712		47,852,460	51.67%	50.00%
Pick 3 Sum It Up		1,737,066		805,116	46.35%	50.00%
Cash Five		19,822,113		9,912,703	50.01%	50.00%
Texas Two Step		20,121,295		10,167,484	50.53%	50.00%
Mega Millions		36,748,925		17,990,632	48.96%	50.00%**
Megaplier		8,565,983		4,328,154	50.53%	N/A
Daily 4		24,360,290		10,705,475	43.95%	50.00%
Daily 4 Sum It Up		1,623,942		613,229	37.76%	50.00%
Powerball		105,653,137		56,505,813	53.48%	50.00%**
Power Play		10,401,140		5,962,719	57.33%	N/A
All or Nothing		32,553,968		19,295,166	59.27%	50.00%
<b>Totals</b>	\$	<b>410,060,809</b>	\$	<b>223,815,447</b>	<b>54.58%</b>	

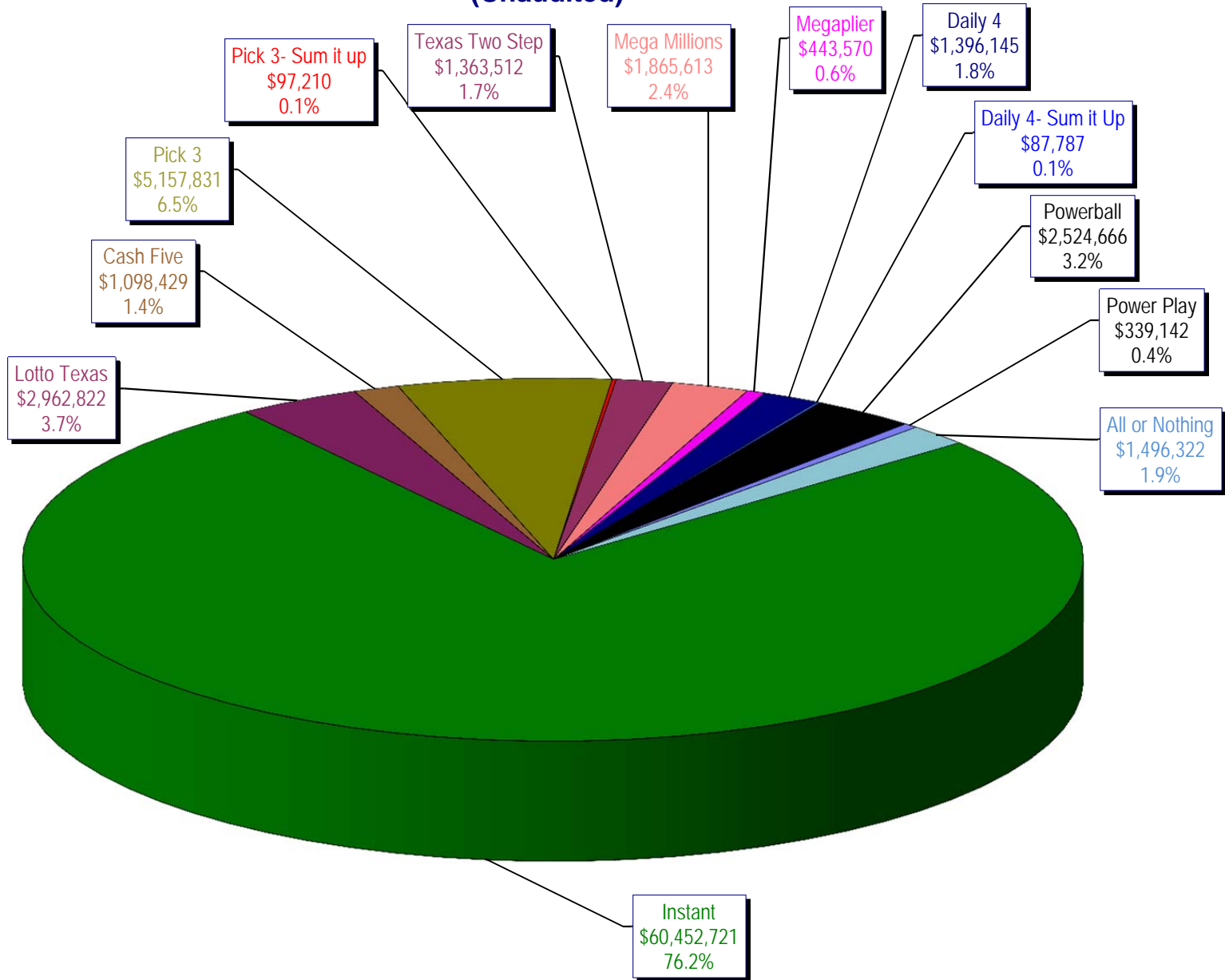
\* Before Unclaimed Prizes

\*\* Estimated; depends on # of guaranteed prizes won in Texas

Texas Lottery Commission  
Instant Ticket Sales  
For the Week Ending 01/05/13  
(Unaudited)



**Texas Lottery Commission  
All Game Sales  
For the Week Ending 01/05/13  
(Unaudited)**



Texas Lottery Commission - Weekly Sales Summary for FY 2013 (Unaudited)

Week Ended	Instant Games	New Games & Dates	Lotto Texas	Jackpot W S	Pick 3	Pick 3 Sum It Up	Cash Five	Texas Two Step	Jackpot M TH	Mega Millions	Jackpot T F	Megaplier	Daily 4	Daily 4 Sum It Up	Powerball	Jackpot W S	Power Play	All or Nothing	Total	Per Cap.
9/1/2012	56,975,312	1446 (\$1, N); 1444 (\$2, N) - 08/27/12	2,972,415	12 13	4,967,337	105,441	1,198,597	1,455,689	500 675	2,769,421	73 83	612,072	1,419,103	97,265	2,680,694	70 80	364,030		75,617,375	2.95
9/8/2012	56,941,761	1440 (\$2, N); 1458 (\$3, N); 1459 (\$5, N) - 09/03/12	3,005,564	14 15	5,112,132	106,959	1,185,494	1,179,003	875 200	3,140,536	93 105	665,392	1,412,279	99,861	3,002,910	90 100	395,287		76,247,178	2.97
9/15/2012	56,302,875	1452 (\$3, N) - 09/10/12	2,999,894	16 17	4,785,209	95,720	1,118,519	894,412	225 200	2,684,227	120 12	580,869	1,290,478	90,795	3,373,296	110 125	417,470	2,526,342	77,160,105	3.01
9/22/2012	54,974,438	1460 (\$1, N); 1461 (\$5, N) - 09/17/12	2,986,898	18 19	4,611,684	89,173	1,091,440	986,264	225 325	1,874,336	15 12	452,082	1,258,191	86,390	4,122,790	149 174	479,344	2,531,686	75,544,715	2.94
9/29/2012	54,606,674	1462 (\$2, N); 1472 (\$10, N) - 09/24/12	3,047,519	20 21	4,708,250	90,752	1,077,739	1,313,257	475 625	1,884,366	14 21	452,334	1,278,847	87,211	3,779,359	200 40	445,091	2,297,966	75,069,364	2.92
10/6/2012	59,223,327	1464 (\$5, N) - 10/01/12	3,164,231	22 23	4,947,571	96,251	1,121,146	1,188,386	800 200	2,055,918	28 36	482,303	1,310,612	89,270	2,266,428	50 40	312,877	2,244,980	78,503,300	3.06
10/13/2012	57,075,606	1465 (\$1, N); 1466 (\$20, N) - 10/08/2012	3,133,742	24 25	4,793,793	89,663	1,074,687	865,146	225 200	2,163,099	45 53	492,614	1,261,858	84,585	2,241,120	50 60	309,684	2,128,476	75,714,073	2.95
10/20/2012	56,630,134	1467 (\$1, N); 1468 (\$5, N) - 10/15/12	3,172,820	26 27	4,959,071	88,413	1,074,980	970,100	225 325	1,984,966	61 12	466,730	1,296,602	84,868	2,447,518	70 80	328,436	2,124,439	75,629,077	2.95
10/27/2012	55,789,743	1469 (\$2, N); 1470 (\$10, N) - 10/22/2012	3,204,694	28 29	5,550,567	96,242	1,063,201	1,226,578	450 600	1,778,725	13 21	430,528	1,381,019	91,618	2,914,062	90 100	371,273	2,021,684	75,919,933	2.96
11/3/2012	58,142,777	1503 (\$5, N) - 10/29/2012	3,392,650	30 31	5,501,964	101,742	1,078,593	860,073	200 225	1,950,117	27 32	462,385	1,393,099	93,773	3,466,242	110 124	424,170	1,913,200	78,780,785	3.07
11/10/2012	57,484,804	1475 (\$1, N); 1476 (\$3, N) - 11/05/2012	3,061,999	32 4	5,468,924	100,767	1,083,928	837,666	200 200	1,783,099	12 13	430,343	1,402,194	94,451	4,246,246	143 168	491,538	1,861,718	78,347,676	3.05
11/17/2012	55,805,228	1477 (\$2, N); 1478 (\$5, N) - 11/12/2012	2,599,190	5 6	5,248,059	91,989	1,059,723	920,319	225 300	1,841,571	19 26	440,783	1,345,121	88,391	5,638,425	185 214	615,323	1,771,812	77,465,933	3.02
11/24/2012	61,331,977	1394 (\$50, N) - 11/19/2012	2,768,876	7 8	5,086,879	91,409	1,021,878	883,407	425 200	2,003,365	33 41	472,723	1,300,693	85,037	10,768,045	250 325	1,053,006	1,637,536	88,504,830	3.45
12/1/2012	58,420,598	0	3,304,053	9 10	5,123,778	97,511	1,086,916	925,805	225 275	2,358,380	49 12	533,175	1,319,684	92,240	43,264,700	550 40	2,894,606	1,797,096	121,218,541	4.72
12/8/2012	62,489,745	1479 (\$1, N); 1485 (\$5, N) - 12/03/12	2,971,837	11 12	5,374,747	101,479	1,129,990	1,359,739	425 575	1,861,503	13 20	445,171	1,391,477	94,879	2,832,293	50 40	362,145	1,704,896	82,119,900	3.20
12/15/2012	59,661,880	0	3,087,087	13 14	5,221,374	98,173	1,104,769	1,928,422	775 1,000	1,933,357	27 35	456,193	1,398,647	88,811	2,808,938	50 40	364,704	1,574,508	79,726,862	3.11
12/22/2012	63,556,886	1481 (\$1, N); 1482 (\$2, N); 1483 (\$5, N) - 12/17/12	3,076,409	15 16	5,170,946	94,116	1,108,894	1,415,548	1,250 200	1,774,922	12 12	431,471	1,385,861	87,012	2,658,349	50 40	349,278	1,531,847	82,641,539	3.22
12/29/2012	63,547,886	0	2,869,329	17 18	4,868,470	90,224	1,041,264	922,869	200 225	1,670,747	18 25	400,587	1,289,758	79,651	2,413,294	50 40	324,222	1,389,460	80,907,760	3.15
1/5/2013	60,452,721	1484 (\$5, N) - 12/31/12	2,962,822	19 20	5,157,831	97,210	1,098,429	1,363,512	350 500	1,865,613	30 39	443,570	1,396,145	87,787	2,524,666	50 60	339,142	1,496,322	79,285,768	3.09
weekly change	-4.9%		3.3%		5.9%	7.7%	5.5%	47.7%		11.7%		10.7%	8.2%	10.2%	4.6%		4.6%	7.7%		-2.0%
<b>SALES</b>			<b>SALES</b>		<b>SALES</b>	<b>SALES</b>	<b>SALES</b>	<b>SALES</b>		<b>SALES</b>		<b>SALES</b>	<b>SALES</b>	<b>SALES</b>	<b>SALES</b>		<b>SALES</b>		<b>SALES</b>	<b>% of Sales</b>
Calendar Year to date	3,195,453,200		166,615,075		278,086,320	5,626,000	63,890,232	64,601,117		194,873,367		38,075,331	72,000,974	4,978,768	236,116,229		27,399,239	32,553,968	4,380,269,819	100.0%
Fiscal Year to date 2013	1,062,050,388		55,869,238		92,603,712	1,737,066	19,822,113	20,121,295		36,748,925		8,565,983	24,360,290	1,623,942	105,653,137		10,401,140	32,553,968	1,472,111,197	100.0%