



*WEEKLY SALES SUMMARY*

Unaudited

[Week Ending: 01/07/2012](#)

Texas Lottery Commission  
Fiscal Year to Date Sales Comparison  
Unaudited

Through the week ending 01/07/12 (19 weeks)

Sales by Game	FY 2010 *	FY 2011 **	FY 2012	\$ Change		% Change	
				FY 2012 to FY 2010	FY 2012 to FY 2011 to	FY 2012 to FY 2010	FY 2012 to FY 2011
Instants	\$ 986,906,594	\$ 990,260,588	\$ 1,013,218,438	\$ 26,311,844	\$ 22,957,850	2.7%	2.3%
Lotto Texas	98,234,970	60,596,205	62,138,294	-36,096,676	1,542,089	-36.7%	2.5%
Pick 3	95,828,068	96,580,320	93,711,171	-2,116,898	-2,869,150	-2.2%	-3.0%
Pick 3 Sum It Up	1,910,059	1,960,897	1,906,929	-3,130	-53,968	-0.2%	-2.8%
Cash Five	24,173,591	22,877,024	22,825,122	-1,348,469	-51,902	-5.6%	-0.2%
Texas Two Step	16,387,454	17,223,518	21,626,442	5,238,988	4,402,924	32.0%	25.6%
Mega Millions	68,691,007	73,606,459	55,662,884	-13,028,123	-17,943,575	-19.0%	-24.4%
Megaplier	15,398,510	14,191,162	12,238,028	-3,160,482	-1,953,134	-20.5%	-13.8%
Daily 4	18,569,389	20,025,694	22,105,351	3,535,962	2,079,657	19.0%	10.4%
Daily 4 Sum It Up	1,788,409	1,576,860	1,637,938	-150,472	61,078	-8.4%	3.9%
Powerball	-	29,511,170	43,767,209	43,767,209	14,256,039	-	-
Power Play	-	7,154,781	9,631,270	9,631,270	2,476,489	-	-
<b>Total</b>	<b>\$ 1,327,888,050</b>	<b>\$ 1,335,564,677</b>	<b>\$ 1,360,469,075</b>	<b>\$ 32,581,025</b>	<b>\$ 24,904,398</b>	<b>2.5%</b>	<b>1.9%</b>

\* 2 extra days

\*\* 1 extra day

Texas Lottery Commission  
Fiscal Year to Date Cumulative Average Sales Comparison  
Unaudited

Through the week ending 01/07/2012 (19 weeks)

Sales by Game	FY 2010	FY 2011	FY 2012
Instant	\$ 7,533,638	\$ 7,617,389	\$ 7,854,406
Lotto Texas	749,885	466,125	481,692
Pick 3	731,512	742,926	726,443
Pick 3 Sum It Up	14,581	15,084	14,782
Cash Five	184,531	175,977	176,939
Texas Two Step	125,095	132,489	167,647
Mega Millions	524,359	566,204	431,495
Megaplier	117,546	109,163	94,868
Daily 4	141,751	154,044	171,359
Daily 4 Sum It Up	13,652	12,130	12,697
Powerball	-	227,009	339,281
Power Play	-	55,037	74,661
<b>Total</b>	<b>\$ 10,136,550</b>	<b>\$ 10,273,574</b>	<b>\$ 10,546,272</b>
	thru 01/09/2010 131 days	thru 01/08/2011 130 days	thru 01/07/2012 129 days

Texas Lottery Commission  
Fiscal Year Over Year Change in Sales  
Unaudited  
FY 2012 Compared to FY 2011

Week	FY 2012 Week Ending	INSTANT TICKETS				ON-LINE GAMES				TOTAL SALES			
		FY 2012	FY 2011	Difference	% change - Cumulative Sales	FY 2012	FY 2011	Difference	% change - Cumulative Sales	FY 2012	FY 2011	Difference	% change - Cumulative Sales
1	9/3/2011**	\$25,147,181	\$31,659,033	(\$6,511,852)	-20.6%	\$9,704,561	\$11,430,717	(\$1,726,156)	-15.1%	\$34,851,742	\$43,089,750	(\$8,238,008)	-19.1%
2	9/10/2011	\$50,591,068	\$48,912,598	\$1,678,470	3.4%	\$17,681,853	\$16,398,160	\$1,283,693	7.8%	\$68,272,921	\$65,310,758	\$2,962,163	4.5%
3	9/17/2011	\$49,835,063	\$48,988,241	\$846,822	1.7%	\$16,842,326	\$17,166,827	(\$324,501)	-1.9%	\$66,677,389	\$66,155,068	\$522,321	0.8%
4	9/24/2011	\$49,777,138	\$48,471,310	\$1,305,828	2.7%	\$17,504,800	\$15,623,813	\$1,880,987	12.0%	\$67,281,938	\$64,095,123	\$3,186,815	5.0%
5	10/1/2011	\$51,040,274	\$50,145,138	\$895,136	1.8%	\$18,653,100	\$16,453,939	\$2,199,161	13.4%	\$69,693,374	\$66,599,077	\$3,094,297	4.6%
6	10/8/2011	\$53,715,157	\$50,918,591	\$2,796,566	5.5%	\$17,225,680	\$16,974,963	\$250,717	1.5%	\$70,940,837	\$67,893,554	\$3,047,283	4.5%
7	10/15/2011	\$51,942,121	\$49,096,011	\$2,846,110	5.8%	\$17,854,980	\$16,661,904	\$1,193,077	7.2%	\$69,797,101	\$65,757,915	\$4,039,187	6.1%
8	10/22/2011	\$52,837,769	\$50,158,946	\$2,678,823	5.3%	\$19,558,519	\$17,374,460	\$2,184,060	12.6%	\$72,396,288	\$67,533,406	\$4,862,883	7.2%
9	10/29/2011	\$52,206,644	\$49,775,287	\$2,431,357	4.9%	\$21,504,565	\$18,402,209	\$3,102,356	16.9%	\$73,711,209	\$68,177,496	\$5,533,713	8.1%
10	11/5/2011	\$56,265,310	\$53,337,848	\$2,927,462	5.5%	\$20,870,086	\$17,321,908	\$3,548,179	20.5%	\$77,135,396	\$70,659,756	\$6,475,641	9.2%
11	11/12/2011	\$55,682,645	\$52,285,479	\$3,397,166	6.5%	\$17,862,404	\$16,388,690	\$1,473,714	9.0%	\$73,545,049	\$68,674,169	\$4,870,880	7.1%
12	11/19/2011	\$54,978,079	\$52,424,036	\$2,554,043	4.9%	\$17,879,985	\$16,138,022	\$1,741,963	10.8%	\$72,858,064	\$68,562,058	\$4,296,006	6.3%
13	11/26/2011	\$53,942,448	\$51,262,518	\$2,679,930	5.2%	\$16,877,145	\$15,967,075	\$910,070	5.7%	\$70,819,593	\$67,229,593	\$3,590,000	5.3%
14	12/3/2011	\$57,153,469	\$56,385,259	\$768,210	1.4%	\$18,298,636	\$17,553,175	\$745,461	4.2%	\$75,452,105	\$73,938,434	\$1,513,671	2.0%
15	12/10/2011	\$55,318,284	\$56,540,048	(\$1,221,764)	-2.2%	\$19,033,326	\$17,703,352	\$1,329,975	7.5%	\$74,351,610	\$74,243,400	\$108,211	0.1%
16	12/17/2011	\$58,612,629	\$57,699,991	\$912,638	1.6%	\$20,045,279	\$18,465,282	\$1,579,997	8.6%	\$78,657,908	\$76,165,273	\$2,492,635	3.3%
17	12/24/2011	\$60,628,256	\$59,800,480	\$827,776	1.4%	\$22,572,986	\$19,635,771	\$2,937,215	15.0%	\$83,201,242	\$79,436,251	\$3,764,991	4.7%
18	12/31/2011	\$63,065,007	\$61,423,121	\$1,641,886	2.7%	\$19,948,521	\$26,122,257	(\$6,173,736)	-23.6%	\$83,013,528	\$87,545,378	(\$4,531,850)	-5.2%
19	1/7/2012	\$60,479,896	\$60,976,653	(\$496,757)	-0.8%	\$17,331,888	\$33,521,570	(\$16,189,682)	-48.3%	\$77,811,784	\$94,498,223	(\$16,686,439)	-17.7%
20	1/14/2012		\$50,099,433				\$17,114,637				\$67,214,070		
21	1/21/2012		\$53,143,646				\$18,091,208				\$71,234,854		
22	1/28/2012		\$54,096,128				\$17,446,156				\$71,542,284		
23	2/4/2012		\$53,433,592				\$17,388,581				\$70,822,173		
24	2/11/2012		\$60,277,094				\$18,233,038				\$78,510,132		
25	2/18/2012		\$61,536,763				\$19,387,518				\$80,924,281		
26	2/25/2012		\$59,046,203				\$20,054,404				\$79,100,607		
27	3/3/2012		\$60,537,060				\$19,478,807				\$80,015,867		
28	3/10/2012		\$59,997,361				\$19,601,658				\$79,599,019		
29	3/17/2012		\$57,835,554				\$21,189,563				\$79,025,117		
30	3/24/2012		\$57,911,940				\$29,729,651				\$87,641,591		
31	3/31/2012		\$60,407,139				\$19,519,264				\$79,926,403		
32	4/7/2012		\$60,704,285				\$19,455,317				\$80,159,602		
33	4/14/2012		\$57,663,398				\$17,866,867				\$75,530,265		
34	4/21/2012		\$56,740,216				\$17,429,326				\$74,169,542		
35	4/28/2012		\$58,042,011				\$17,104,548				\$75,146,559		
36	5/5/2012		\$66,509,159				\$17,744,833				\$84,253,992		
37	5/12/2012		\$53,769,716				\$17,783,942				\$71,553,658		
38	5/19/2012		\$53,704,228				\$18,623,882				\$72,328,110		
39	5/26/2012		\$52,310,134				\$19,115,921				\$71,426,055		
40	6/2/2012		\$53,256,725				\$18,462,603				\$71,719,328		
41	6/9/2012		\$54,293,614				\$17,213,019				\$71,506,633		
42	6/16/2012		\$52,688,230				\$17,534,413				\$70,222,643		

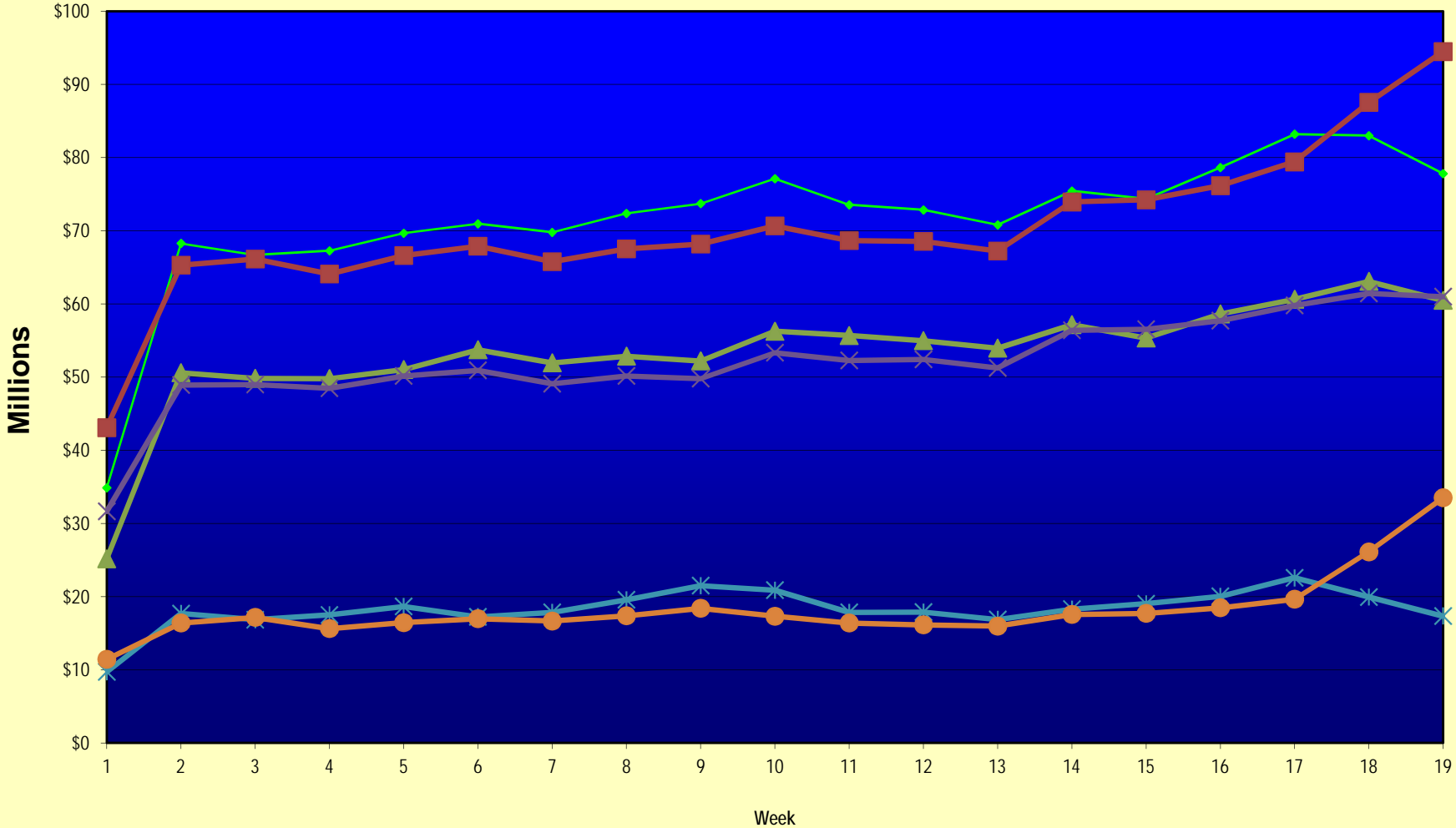
Note: Week 1 is not a full week of sales as this report is prepared on a Fiscal Year basis.

Texas Lottery Commission  
Fiscal Year Over Year Change in Sales  
Unaudited  
FY 2012 Compared to FY 2011

Week	FY 2012 Week Ending	INSTANT TICKETS				ON-LINE GAMES				TOTAL SALES			
		FY 2012	FY 2011	Difference	% change - Cumulative Sales	FY 2012	FY 2011	Difference	% change - Cumulative Sales	FY 2012	FY 2011	Difference	% change - Cumulative Sales
43	6/23/2012		\$53,174,595				\$17,086,937				\$70,261,532		
44	6/30/2012		\$53,687,509				\$18,406,785				\$72,094,294		
45	7/7/2012		\$53,054,685				\$16,211,989				\$69,266,674		
46	7/14/2012		\$51,161,290				\$16,945,733				\$68,107,023		
47	7/21/2012		\$50,807,750				\$17,362,213				\$68,169,963		
48	7/28/2012		\$51,277,179				\$18,870,764				\$70,147,943		
49	8/4/2012		\$53,320,489				\$20,922,034				\$74,242,523		
50	8/11/2012		\$50,914,022				\$19,467,124				\$70,381,146		
51	8/18/2012		\$49,905,898				\$17,419,045				\$67,324,943		
52	8/25/2012		\$49,424,242				\$16,837,474				\$66,261,716		
	8/31/2012		\$27,274,804				\$8,600,118				\$35,874,922		
Total thru Current Week		\$1,013,218,438	\$990,260,588	\$22,957,850	2.3%	\$347,250,637	\$345,304,089	\$1,946,548	0.6%	\$1,360,469,075	\$1,335,564,677	\$24,904,398	1.9%
Fiscal Year Total		\$1,013,218,438	\$2,842,266,680			\$347,250,637	\$969,003,455			\$1,360,469,075	\$3,811,270,135		

\*\* FY 2011 includes 4 days; FY 2012 includes 3 days

### Texas Lottery Commission Fiscal Year Over Year Change in Sales



◆ Total Sales 2012    
 ■ Total Sales 2011    
 ▲ Instant Tickets 2012    
 ✕ Instant Tickets 2011    
 ✱ On-Line Games 2012    
 ● On-Line Games 2011

Note: Week 1 is not a full week of sales as this report is prepared on a Fiscal Year basis.

Texas Lottery Commission  
**Instant Tickets by Price Point**  
Sales, Prize Expense, Sales Contribution and Payout Percentage With Year Over Year Changes  
Unaudited

Fiscal Year	Price Point	# of Active Games	FY Sales	% of Instant Ticket Sales	Year over Year Change in Sales	FY Prize Expense	Year over Year Change in Prize Expense	FY Sales Contribution	Year over Year Change in Contribution	Average Prize Payout %	Year over Year Change in Payout %
2011	\$1.00	26	72,728,728	7.3%		44,909,986		27,818,742		61.7%	2.8%
thru	\$2.00	26	141,885,580	14.3%		92,850,034		49,035,546		65.4%	0.5%
1/8/2011	\$3.00	17	121,854,110	12.3%		79,996,927		41,857,183		65.6%	0.1%
	\$5.00	35	319,802,470	32.3%		217,709,344		102,093,126		68.1%	0.1%
	\$7.00	7	42,018,060	4.2%		28,561,440		13,456,620		68.0%	0.0%
	\$10.00	12	128,523,310	13.0%		90,839,615		37,683,695		70.7%	1.1%
	\$20.00	5	128,889,580	13.0%		95,613,509		33,276,071		74.2%	1.4%
	\$50.00	2	34,558,750	3.5%		26,829,695		7,729,055		77.6%	4.1%
<b>Total</b>		<b>130</b>	<b>\$990,260,588</b>			<b>\$677,310,550</b>		<b>\$312,950,038</b>		<b>68.4%</b>	<b>0.9%</b>
2012	\$1.00	26	76,653,381	7.6%		47,128,842		29,524,539		61.5%	1.2%
thru	\$2.00	26	139,735,656	13.8%		90,851,190		48,884,466		65.0%	-0.8%
1/7/2012	\$3.00	15	125,343,270	12.4%		82,222,662		43,120,608		65.6%	0.0%
	\$5.00	35	320,127,440	31.6%		217,935,460		102,191,980		68.1%	0.2%
	\$7.00	4	18,149,831	1.8%		12,341,766		5,808,065		68.0%	0.0%
	\$10.00	14	160,482,260	15.8%		113,008,052		47,474,208		70.4%	-0.8%
	\$20.00	5	142,805,000	14.1%		106,532,038		36,272,962		74.6%	-0.1%
	\$50.00	2	29,921,600	3.0%		23,240,664		6,680,936		77.7%	0.1%
<b>Total</b>		<b>127</b>	<b>\$1,013,218,438</b>			<b>\$693,260,675</b>		<b>\$319,957,763</b>		<b>68.4%</b>	<b>-0.1%</b>
Variance	\$1.00	0	3,924,653		5.4%	2,218,856	4.9%	1,705,797	6.1%	-0.27%	
2012 to	\$2.00	0	-2,149,924		-1.5%	-1,998,844	-2.2%	-151,080	-0.3%	-0.42%	
2011	\$3.00	-2	3,489,160		2.9%	2,225,735	2.8%	1,263,425	3.0%	-0.05%	
	\$5.00	0	324,970		0.1%	226,116	0.1%	98,854	0.1%	0.00%	
	\$7.00	-3	-23,868,229		-56.8%	-16,219,674	-56.8%	-7,648,555	-56.8%	0.03%	
	\$10.00	2	31,958,950		24.9%	22,168,438	24.4%	9,790,512	26.0%	-0.26%	
	\$20.00	0	13,915,420		10.8%	10,918,529	11.4%	2,996,891	9.0%	0.42%	
	\$50.00	0	-4,637,150		-13.4%	-3,589,031	-13.4%	-1,048,119	-13.6%	0.04%	
<b>Total</b>		<b>-3</b>	<b>\$22,957,850</b>		<b>2.3%</b>	<b>\$15,950,126</b>	<b>2.4%</b>	<b>\$7,007,724</b>	<b>2.2%</b>	<b>0.02%</b>	

Notes - Instant Ticket Variances

Texas Lottery Commission  
**Instant Tickets by Price Point**  
**Sales, Prize Expense, Sales Contribution and Payout Percentage With Year Over Year Changes**  
 Unaudited

			FY 2012		FY 2011	Difference
Sales	\$1 - \$7		\$680,009,578		\$698,288,948	-\$18,279,370
Prize Exp.	\$1 - \$7		\$450,479,921		\$464,027,731	-\$13,547,810
Sales Cont.	\$1 - \$7		\$229,529,657		\$234,261,217	-\$4,731,560
Prize Exp. %	\$1 - \$7		66.2%		66.5%	-0.2%
			FY 2012		FY 2011	Difference
Sales	\$10 - \$50		\$333,208,860		\$291,971,640	\$41,237,220
Prize Exp.	\$10 - \$50		\$242,780,755		\$213,282,818	\$29,497,936
Sales Cont.	\$10 - \$50		\$90,428,105		\$78,688,822	\$11,739,284
Prize Exp. %	\$10 - \$50		72.9%		73.0%	-0.2%
			FY 2012		FY 2011	Difference
Sales	Instant		\$1,013,218,438		\$990,260,588	\$22,957,850
Prize Exp.	Instant		\$693,260,675		\$677,310,550	\$15,950,126
Sales Cont.	Instant		\$319,957,763		\$312,950,038	\$7,007,724
Prize Exp. %	Instant		68.4%		68.4%	0.0%

			FY 2012		FY 2011	Difference
Sales	\$1 - \$10		\$840,491,838		\$826,812,258	\$13,679,580
Prize Exp.	\$1 - \$10		\$563,487,973		\$554,867,346	\$8,620,627
Sales Cont.	\$1 - \$10		\$277,003,865		\$271,944,912	\$5,058,953
Prize Exp. %	\$1 - \$10		67.0%		67.1%	-0.1%
			FY 2012		FY 2011	Difference
Sales	\$20 - \$50		\$172,726,600		\$163,448,330	\$9,278,270
Prize Exp.	\$20 - \$50		\$129,772,702		\$122,443,204	\$7,329,498
Sales Cont.	\$20 - \$50		\$42,953,898		\$41,005,126	\$1,948,772
Prize Exp. %	\$20 - \$50		75.1%		74.9%	0.2%
			FY 2012		FY 2011	Difference
Sales	Instant		\$1,013,218,438		\$990,260,588	\$22,957,850
Prize Exp.	Instant		\$693,260,675		\$677,310,550	\$15,950,126
Sales Cont.	Instant		\$319,957,763		\$312,950,038	\$7,007,724
Prize Exp. %	Instant		68.4%		68.4%	0.0%



Texas Lottery Commission  
**Weekly Sales Summary**  
**& Comparison to Previous Week**  
 Unaudited

	Week Ending 01/07/2012		Week Ending 12/31/2011			
	<u>THIS WEEK</u>	% of Sales	<u>LAST WEEK</u>	% of Sales	<u>\$ change</u>	<u>% change</u>
Total Sales	<u>\$77,811,784</u>		<u>\$83,013,528</u>		<u>-\$5,201,744</u>	-6.27%
Instant Tickets	<u>\$60,479,896</u>	77.7%	<u>\$63,065,007</u>	76.0%	<u>-\$2,585,111</u>	-4.10%
Lotto	\$3,193,532	4.1%	\$3,368,593	4.1%	-\$175,061	-5.20%
Pick 3	\$5,246,112	6.7%	\$5,211,663	6.3%	\$34,450	0.66%
Pick 3 Sum It Up	\$108,060	0.1%	\$107,395	0.1%	\$665	0.62%
Cash Five	\$1,281,653	1.6%	\$1,275,257	1.5%	\$6,396	0.50%
Texas Two Step	\$1,135,472	1.5%	\$1,200,536	1.4%	-\$65,064	-5.42%
Mega Millions	\$2,298,815	3.0%	\$4,358,985	5.3%	-\$2,060,170	-47.26%
Megaplier	\$550,191	0.7%	\$878,865	1.1%	-\$328,674	-37.40%
Daily 4	\$1,240,736	1.6%	\$1,244,035	1.5%	-\$3,299	-0.27%
Daily 4 Sum It Up	\$90,116	0.1%	\$88,079	0.1%	\$2,037	2.31%
Powerball	\$1,763,484	2.3%	\$1,788,226	2.2%	-\$24,742	-1.38%
Power Play	\$423,718	0.5%	\$426,888	0.5%	-\$3,170	-0.74%
Total Online Sales	<u>\$17,331,888</u>		<u>\$19,948,521</u>		<u>-\$2,616,633</u>	-13.12%

\* Totals may not sum due to rounding.

Texas Lottery Commission  
Weekly Sales Summary  
Unaudited

INSTANT TICKETS  
TOP TEN SELLING GAMES

For the Week Ending : 01/07/2012

Rank	Price Point	Game	Sales (Millions)
1	\$ 20	\$500,000,000 FRENZY	\$ 3.536
2	\$ 5	GROOVY CASH	\$ 2.901
3	\$ 10	SEASON'S GREETINGS	\$ 2.475
4	\$ 5	SILVER BELLS	\$ 2.406
5	\$ 5	MONEY MULTIPLIER	\$ 2.314
6	\$ 20	\$500,000,000 BLOCKBUSTER	\$ 2.150
7	\$ 5	FUNKY 5'S	\$ 2.110
8	\$ 3	BONUS CASHWORD	\$ 2.059
9	\$ 10	TEXAS LOTTERY BLACK, SERIES 3	\$ 2.016
10	\$ 50	CASINO ACTION	\$ 1.920

Texas Lottery Commission  
Prize Payout Tracking Report  
Unaudited

Through Week Ending 01/07/2012

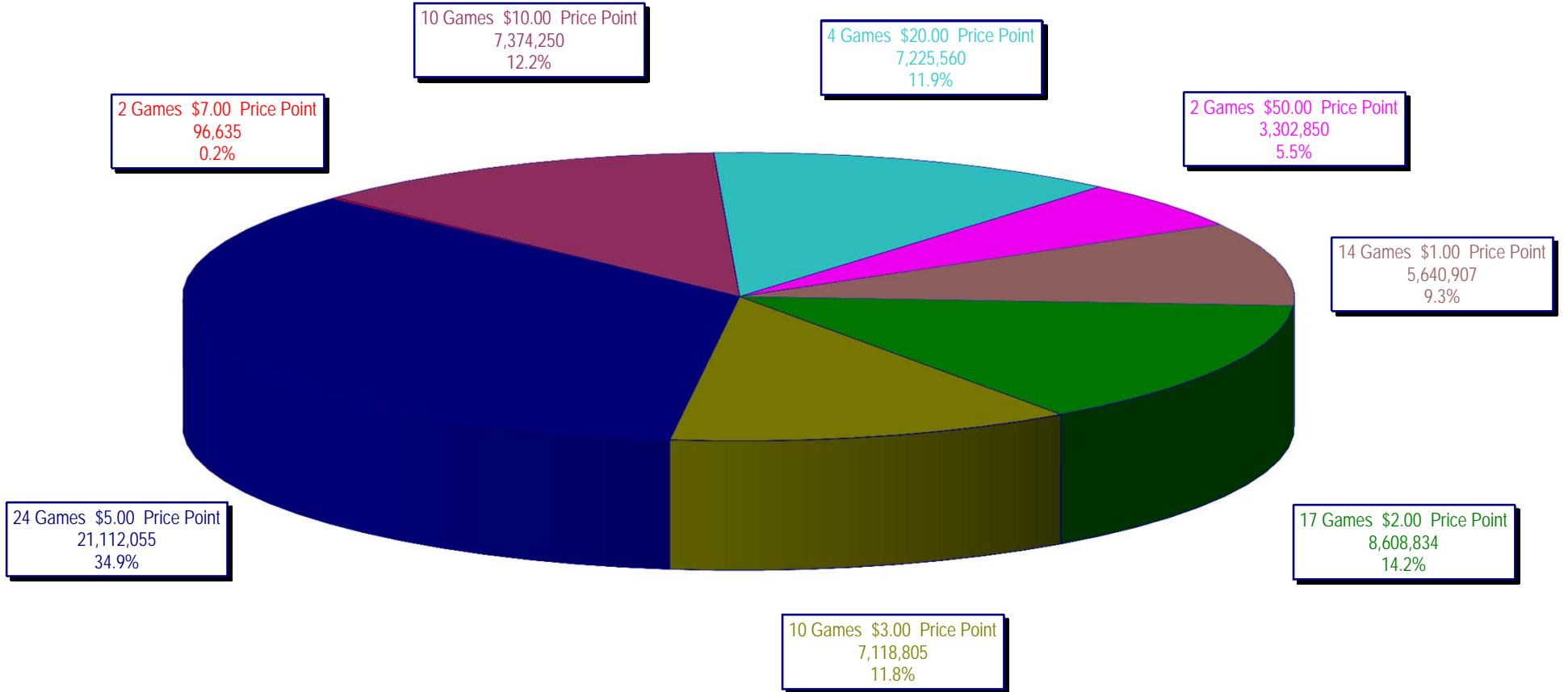
On-Line Sales

		FY Sales Through Week Ending 1/7/2012		FY Prize Expense Through Week Ending 1/7/2012	Actual* Prize Payout	Base Payout (Prize Pool)
Lotto	\$	62,138,294	\$	38,599,305	62.12%	50.00%
Pick 3		93,711,171		41,035,550	43.79%	50.00%
Pick 3 Sum It Up		1,906,929		828,781	43.46%	50.00%
Cash Five		22,825,122		11,754,814	51.50%	50.00%
Texas Two Step		21,626,442		10,807,614	49.97%	50.00%
Mega Millions		55,662,884		27,524,046	49.45%	50.00%**
Megaplier		12,238,028		6,666,059	54.47%	N/A
Daily 4		22,105,351		10,127,250	45.81%	50.00%
Daily 4 Sum It Up		1,637,938		634,736	38.75%	50.00%
Powerball		43,767,209		21,895,087	50.03%	50.00%**
Power Play		9,631,270		5,929,565	61.57%	N/A
<b>Totals</b>	\$	<b>347,250,637</b>	\$	<b>175,802,807</b>	<b>50.63%</b>	

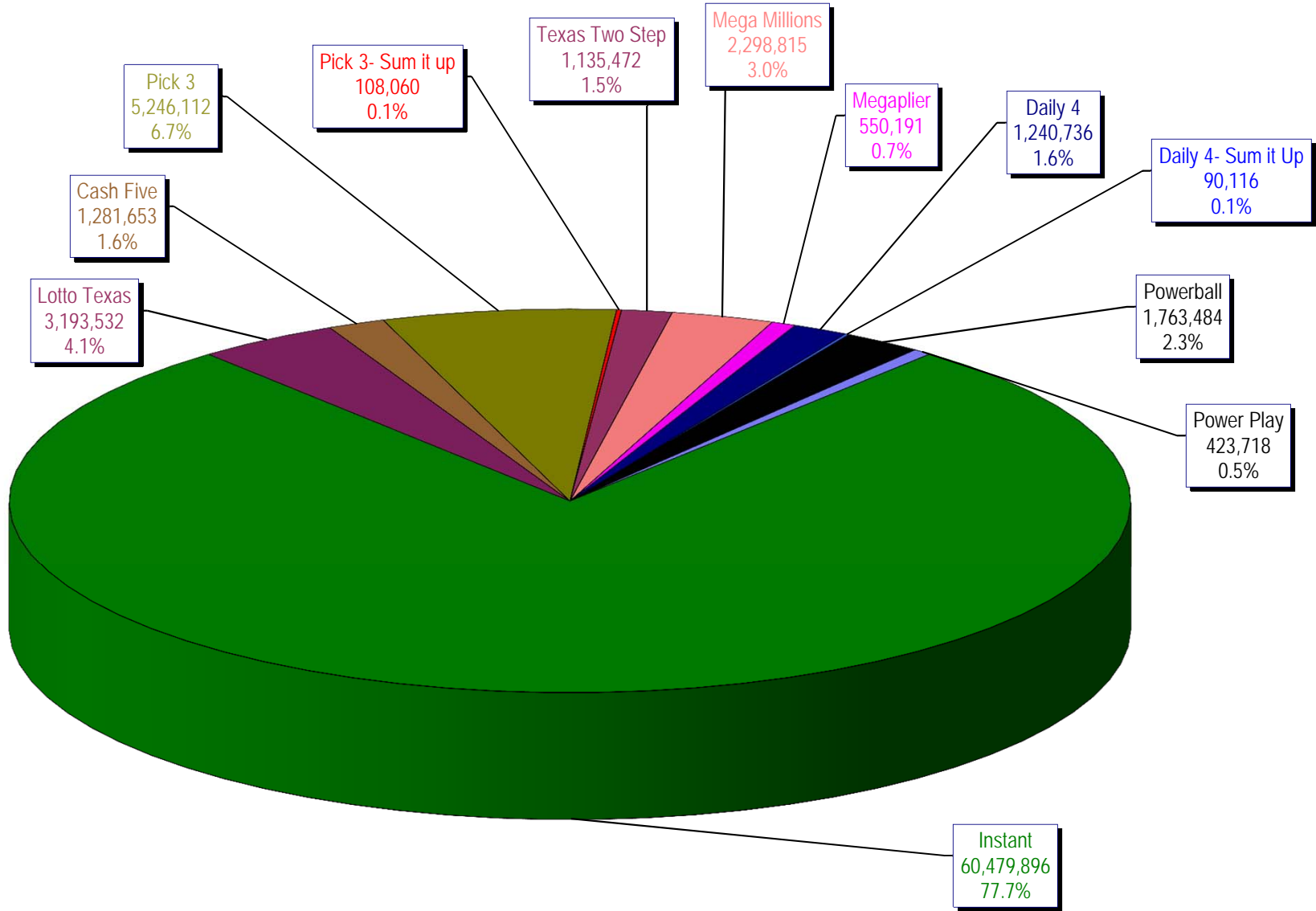
\* Before Unclaimed Prizes

\*\* Estimated; depends on # of guaranteed prizes won in Texas

Texas Lottery Commission  
Instant Ticket Sales  
For the Week Ending 01/07/12  
(Unaudited)



**Texas Lottery Commission  
All Game Sales  
For the Week Ending 01/07/12  
(Unaudited)**



Texas Lottery Commission - Weekly Sales Summary for FY 2012 (Unaudited)

Week Ended	Instant Games	New Games & Dates	Lotto Texas	Jackpot W	S	Pick 3	Pick 3 Sum It Up	Cash Five	Texas Two Step	Jackpot M	TH	Mega Millions	Jackpot T	F	Megaplier	Daily 4	Daily 4 Sum It Up	Powerball	Jackpot W	S	Power Play	Total	Per Cap.
9/3/2011	52,421,985	1340 (\$1,N); 1310 (\$2, N) - 08/29/11	3,710,974	23	24	5,228,940	100,997	1,239,134	989,988	225	300	2,248,664	21	29	539,246	1,221,178	93,318	2,401,555	75	91	530,686	70,726,664	2.81
9/10/2011	50,591,068	1360 (\$3, N) - 09/05/11	3,329,350	25	4	5,103,026	99,259	1,198,563	935,771	450	200	2,387,766	37	44	557,225	1,180,505	88,443	2,295,315	107	20	506,631	68,272,921	2.71
9/17/2011	49,835,063	0	3,031,798	5	6	4,953,079	100,990	1,210,562	961,592	225	300	2,801,526	54	65	626,459	1,125,230	83,532	1,560,522	25	20	387,037	66,677,389	2.64
9/24/2011	49,777,138	1362(\$1, N); 1363(\$5,N); 1364(\$5,N) - 09/19/11	3,083,973	7	8	4,819,453	97,999	1,200,444	1,283,472	450	600	3,206,022	75	86	692,909	1,092,294	82,198	1,561,655	25	30	384,383	67,281,938	2.67
10/1/2011	51,040,274	1365(\$2,N) - 09/26/11	3,196,730	9	10	4,846,896	97,026	1,215,715	1,146,613	800	200	4,033,330	96	113	830,660	1,096,271	83,993	1,693,809	37	47	412,058	69,693,374	2.76
10/8/2011	53,715,157	1366(\$1,N) - 10/03/11	3,231,892	11	12	5,064,771	102,919	1,252,733	1,004,251	225	300	2,176,684	12	14	527,777	1,188,636	92,825	2,103,034	58	71	480,159	70,940,837	2.81
10/15/2011	51,942,121	1367 (\$7, N) - 10/10/11	3,230,925	13	14	4,776,985	99,008	1,214,385	1,337,436	450	625	2,260,036	22	30	542,787	1,132,415	84,772	2,613,215	86	105	563,017	69,797,101	2.77
10/22/2011	52,837,769	1369 (\$1, N); 1370 (\$5, N) - 10/17/11	3,250,317	15	16	4,784,201	98,306	1,202,768	1,887,302	825	1,050	2,386,255	39	48	561,705	1,130,353	83,722	3,477,867	124	148	695,724	72,396,288	2.87
10/29/2011	52,206,644	1371 (\$2, N) - 10/24/11	3,302,201	17	18	4,685,786	95,887	1,186,987	2,055,399	1,300	1,550	2,592,752	57	67	596,631	1,107,441	82,921	4,895,300	173	203	903,261	73,711,209	2.92
11/5/2011	56,265,310	1373 (\$10, N) - 10/31/11	3,570,825	19	20	5,165,835	105,793	1,240,514	910,036	200	200	2,497,308	78	12	583,481	1,222,706	92,619	4,617,172	245	20	863,799	77,135,396	3.06
11/12/2011	55,682,645	1375 (\$3, N); 1374 (\$1, N) - 11/07/11	3,673,137	21	22	5,298,645	109,575	1,268,630	961,349	225	200	2,362,698	15	22	552,133	1,235,272	92,025	1,861,697	25	35	447,243	73,545,049	2.92
11/19/2011	54,978,079	1376(\$2, N); 1377 (\$5, N) - 11/14/11	3,575,231	23	24	5,216,095	106,956	1,246,366	1,059,355	225	325	2,300,050	30	40	550,825	1,224,365	89,978	2,033,222	46	60	477,542	72,858,064	2.89
11/26/2011	53,942,448	1372 (\$5, N) - 11/21/11	3,499,908	25	26	4,943,420	100,352	1,179,174	998,175	500	200	2,377,399	47	55	555,760	1,215,090	90,416	1,527,546	20	25	389,905	70,819,593	2.81
12/3/2011	57,153,469	0	3,744,456	27	28	5,267,602	108,544	1,264,649	938,225	225	200	2,830,996	64	75	636,924	1,278,857	95,379	1,708,763	31	40	424,242	75,452,105	2.99
12/10/2011	55,318,284	1378 (\$1, N); 1322 (\$5, N) - 12/5/11; 1389 (\$1, N) - 12/6/11	3,666,072	29	30	5,168,509	106,265	1,243,957	1,030,979	225	325	3,462,326	87	100	736,281	1,235,834	89,131	1,850,570	52	67	443,403	74,351,610	2.95
12/17/2011	58,612,629	1383 (\$3,N) - 12/12/11	2,963,151	4	5	5,096,413	103,606	1,257,263	1,339,991	475	650	4,412,520	116	135	882,759	1,240,640	89,229	2,163,468	78	91	496,239	78,657,908	3.12
12/24/2011	60,628,256	1379 (\$1, N); 1317 (\$2, N); 1380 (\$5, N) - 12/19/11	3,265,301	6	7	5,257,800	105,568	1,269,335	943,509	200	225	5,729,832	152	173	1,095,360	1,263,815	88,757	2,933,837	104	125	619,872	83,201,242	3.30
12/31/2011	63,065,007	0	3,368,593	8	9	5,211,663	107,395	1,275,257	1,200,536	325	450	4,358,985	206	12	878,865	1,244,035	88,079	1,788,226	20	25	426,888	83,013,528	3.29
1/7/2012	60,479,896	1381 (\$5,N); 1277 (\$50,N) - 1/3/12; 1429 (\$5,N); 1401 (\$10, N) - 1/4/12	3,193,532	10	11	5,246,112	108,060	1,281,653	1,135,472	625	200	2,298,815	15	25	550,191	1,240,736	90,116	1,763,484	30	44	423,718	77,811,784	3.09
weekly change	-4.1%		-5.2%			0.7%	0.6%	0.5%	-5.4%			-47.3%			-37.4%	-0.3%	2.3%	-1.4%			-0.7%	-6.3%	
<b>SALES</b>			<b>SALES</b>			<b>SALES</b>	<b>SALES</b>	<b>SALES</b>	<b>SALES</b>			<b>SALES</b>			<b>SALES</b>	<b>SALES</b>	<b>SALES</b>	<b>SALES</b>			<b>SALES</b>	<b>SALES</b>	<b>% of Sales</b>
Startup to date	42,888,576,640		10,970,144,353			4,221,071,492	25,210,262	2,343,733,783	599,460,909			1,541,094,609			352,373,199	223,108,039	24,607,377	200,159,093			45,894,615	63,643,568,342	100.0%
Calendar Year to date	60,479,896		3,193,532			5,246,112	108,060	1,281,653	1,135,472			2,298,815			550,191	1,240,736	90,116	1,763,484			423,718	77,811,784	100.0%
Fiscal Year to date 2012	1,013,218,438		62,138,294			93,711,171	1,906,929	22,825,122	21,626,442			55,662,884			12,238,028	22,105,351	1,637,938	43,767,209			9,631,270	1,360,469,075	100.0%