



WEEKLY SALES SUMMARY

Unaudited

Week Ending: 1/07/2017

Texas Lottery Commission
Fiscal Year to Date Sales Comparison
Unaudited

Through the Week Ending 1/07/2017 (19 Weeks)

Sales by Game	FY 2015 *	FY 2016 **	FY 2017	\$ Change		% Change	
				FY 2017 to FY 2015	FY 2017 to FY 2016	FY 2017 to FY 2015	FY 2017 to FY 2016
Scratch Tickets	\$ 1,207,713,174	\$ 1,266,861,809	\$ 1,315,491,848	\$ 107,778,674	\$ 48,630,039	8.9%	3.8%
Lotto Texas	44,102,314	46,705,350	39,147,633	-4,954,681	-7,557,717	-11.2%	-16.2%
Lotto Extra	6,669,477	7,886,720	7,506,960	837,483	-379,760	12.6%	-4.8%
Pick 3	90,485,896	90,705,502	87,093,419	-3,392,478	-3,612,083	-3.7%	-4.0%
Pick 3 Sum It Up	1,725,262	1,806,965	1,655,610	-69,652	-151,355	-4.0%	-8.4%
Cash Five	18,044,659	16,693,565	15,544,171	-2,500,488	-1,149,394	-13.9%	-6.9%
Texas Two Step	19,559,346	18,725,522	19,384,812	-174,534	659,290	-0.9%	3.5%
Mega Millions	61,027,084	48,660,568	37,417,672	-23,609,412	-11,242,896	-38.7%	-23.1%
Megaplier	13,759,155	12,001,725	10,245,908	-3,513,247	-1,755,817	-25.5%	-14.6%
Daily 4	30,581,369	31,378,498	32,910,633	2,329,264	1,532,135	7.6%	4.9%
Daily 4 Sum It Up	1,821,691	1,623,961	1,747,679	-74,013	123,718	-4.1%	7.6%
Powerball	62,286,915	175,861,917	77,976,829	15,689,914	-97,885,088	25.2%	-55.7%
Power Play	8,180,014	18,828,040	11,011,212	2,831,198	-7,816,828	34.6%	-41.5%
All or Nothing	14,067,972	11,191,576	10,265,246	-3,802,726	-926,330	-27.0%	-8.3%
Monopoly	1 2,656,590	-	-	-2,656,590	-	-100.0%	-
Texas Triple Chance	-	9,969,847	5,597,344	5,597,344	-4,372,503	-	-43.9%
Total	\$ 1,582,680,918	\$ 1,758,901,564	\$ 1,672,996,975	\$ 90,316,057	\$ -85,904,589	5.7%	-4.9%

* 3 extra days

** 2 extra days

1 Monopoly sales were suspended after draw on 12/12/14

Texas Lottery Commission
Fiscal Year to Date Cumulative Average Sales Comparison
Unaudited

Through the Week Ending 1/07/2017 (19 Weeks)

Sales by Game	FY 2015	FY 2016	FY 2017
Scratch Tickets	\$ 9,149,342	\$ 9,670,701	\$ 10,197,611
Lotto Texas	334,108	356,529	303,470
Lotto Extra	50,526	60,204	58,193
Pick 3	685,499	692,408	675,143
Pick 3 Sum It Up	13,070	13,794	12,834
Cash Five	136,702	127,432	120,497
Texas Two Step	148,177	142,943	150,270
Mega Millions	462,326	371,455	290,059
Megaplier	104,236	91,616	79,426
Daily 4	231,677	239,531	255,121
Daily 4 Sum It Up	13,801	12,397	13,548
Powerball	471,871	1,342,457	604,472
Power Play	61,970	143,725	85,358
All or Nothing	106,576	85,432	79,576
Monopoly	** 48,302	-	-
Texas Triple Chance	- *	94,951	43,390
Total	\$ <u>12,018,183</u>	\$ <u>13,445,575</u>	\$ <u>12,968,969</u>

thru 1/10/2015

thru 1/09/2016

thru 1/07/2017

132 days

131 days

129 days

** 55 days

* 105 days

Texas Lottery Commission
Fiscal Year Over Year Change in Sales
Unaudited
FY 2017 Compared to FY 2016

			SCRATCH TICKETS				DRAW GAMES				TOTAL SALES			
FY 2017			FY 2017	FY 2016	Difference	% change - Cumulative Sales	FY 2017	FY 2016	Difference	% change - Cumulative Sales	FY 2017	FY 2016	Difference	% change - Cumulative Sales
Week	Week Ending													
1	9/3/2016 *		\$32,980,266	\$49,534,249	(\$16,553,983)	-33.4%	\$10,218,656	\$17,091,724	(\$6,873,068)	-40.2%	\$43,198,922	\$66,625,973	(\$23,427,051)	-35.2%
2	9/10/2016		\$65,952,418	\$61,566,291	\$4,386,127	7.1%	\$19,635,377	\$20,630,922	(\$995,545)	-4.8%	\$85,587,795	\$82,197,213	\$3,390,583	4.1%
3	9/17/2016		\$66,196,270	\$63,530,657	\$2,665,613	4.2%	\$20,915,290	\$20,327,253	\$588,037	2.9%	\$87,111,560	\$83,857,910	\$3,253,650	3.9%
4	9/24/2016		\$64,383,005	\$61,731,400	\$2,651,605	4.3%	\$17,451,165	\$22,252,290	(\$4,801,125)	-21.6%	\$81,834,170	\$83,983,690	(\$2,149,520)	-2.6%
5	10/1/2016		\$67,349,951	\$67,048,415	\$301,536	0.4%	\$17,519,852	\$25,436,791	(\$7,916,939)	-31.1%	\$84,869,803	\$92,485,206	(\$7,615,403)	-8.2%
6	10/8/2016		\$71,598,690	\$66,049,706	\$5,548,984	8.4%	\$18,211,107	\$18,138,977	\$72,130	0.4%	\$89,809,797	\$84,188,683	\$5,621,114	6.7%
7	10/15/2016		\$69,444,762	\$65,073,593	\$4,371,169	6.7%	\$18,075,261	\$17,776,414	\$298,847	1.7%	\$87,520,023	\$82,850,007	\$4,670,016	5.6%
8	10/22/2016		\$69,317,066	\$64,087,437	\$5,229,629	8.2%	\$18,422,336	\$18,450,464	(\$28,128)	-0.2%	\$87,739,402	\$82,537,901	\$5,201,501	6.3%
9	10/29/2016		\$69,729,599	\$66,025,374	\$3,704,225	5.6%	\$18,535,248	\$19,568,150	(\$1,032,902)	-5.3%	\$88,264,847	\$85,593,524	\$2,671,324	3.1%
10	11/5/2016		\$73,451,702	\$68,137,192	\$5,314,510	7.8%	\$20,151,939	\$20,398,351	(\$246,413)	-1.2%	\$93,603,641	\$88,535,543	\$5,068,098	5.7%
11	11/12/2016		\$70,998,320	\$65,449,428	\$5,548,892	8.5%	\$19,925,460	\$20,169,382	(\$243,923)	-1.2%	\$90,923,780	\$85,618,810	\$5,304,970	6.2%
12	11/19/2016		\$75,265,196	\$68,364,421	\$6,900,775	10.1%	\$21,424,637	\$17,174,606	\$4,250,031	24.7%	\$96,689,833	\$85,539,027	\$11,150,806	13.0%
13	11/26/2016		\$68,983,157	\$61,091,628	\$7,891,529	12.9%	\$24,223,331	\$17,168,993	\$7,054,338	41.1%	\$93,206,488	\$78,260,621	\$14,945,867	19.1%
14	12/3/2016		\$72,688,514	\$67,830,827	\$4,857,687	7.2%	\$17,653,328	\$19,252,418	(\$1,599,090)	-8.3%	\$90,341,842	\$87,083,245	\$3,258,597	3.7%
15	12/10/2016		\$71,676,549	\$68,324,452	\$3,352,097	4.9%	\$18,150,590	\$19,529,408	(\$1,378,819)	-7.1%	\$89,827,139	\$87,853,860	\$1,973,279	2.2%
16	12/17/2016		\$73,909,726	\$71,041,258	\$2,868,468	4.0%	\$19,814,333	\$20,824,840	(\$1,010,507)	-4.9%	\$93,724,059	\$91,866,098	\$1,857,962	2.0%
17	12/24/2016		\$77,369,179	\$78,125,965	(\$756,786)	-1.0%	\$19,276,415	\$22,586,417	(\$3,310,002)	-14.7%	\$96,645,594	\$100,712,382	(\$4,066,788)	-4.0%
18	12/31/2016		\$80,868,854	\$76,712,975	\$4,155,879	5.4%	\$19,289,161	\$27,972,880	(\$8,683,720)	-31.0%	\$100,158,015	\$104,685,855	(\$4,527,841)	-4.3%
19	1/7/2017		\$73,328,624	\$77,136,541	(\$3,807,917)	-4.9%	\$18,611,644	\$127,289,478	(\$108,677,835)	-85.4%	\$91,940,268	\$204,426,019	(\$112,485,752)	-55.0%
20	1/14/2017			\$73,858,865				\$140,104,126				\$213,962,991		
21	1/21/2017			\$70,665,700				\$20,781,745				\$91,447,445		
22	1/28/2017			\$71,051,685				\$20,433,401				\$91,485,086		
23	2/4/2017			\$78,458,428				\$21,274,800				\$99,733,228		
24	2/11/2017			\$80,754,850				\$21,391,919				\$102,146,769		
25	2/18/2017			\$80,078,271				\$21,911,382				\$101,989,653		
26	2/25/2017			\$78,832,217				\$22,823,086				\$101,655,303		
27	3/4/2017			\$80,019,524				\$23,146,906				\$103,166,430		
28	3/11/2017			\$78,524,214				\$19,311,625				\$97,835,839		
29	3/18/2017			\$75,446,960				\$18,001,000				\$93,447,960		
30	3/25/2017			\$75,293,759				\$18,553,964				\$93,847,723		
31	4/1/2017			\$79,316,221				\$19,482,563				\$98,798,784		
32	4/8/2017			\$74,560,898				\$20,100,629				\$94,661,527		
33	4/15/2017			\$74,056,586				\$20,677,413				\$94,733,999		
34	4/22/2017			\$73,110,080				\$20,313,339				\$93,423,419		
35	4/29/2017			\$73,448,019				\$22,666,626				\$96,114,645		
36	5/6/2017			\$77,593,399				\$33,262,968				\$110,856,367		
37	5/13/2017			\$75,263,676				\$20,250,149				\$95,513,825		
38	5/20/2017			\$74,274,808				\$19,605,983				\$93,880,791		
39	5/27/2017			\$71,562,728				\$20,150,232				\$91,712,960		
40	6/3/2017			\$73,085,109				\$21,067,550				\$94,152,659		
41	6/10/2017			\$70,593,768				\$21,389,794				\$91,983,562		
42	6/17/2017			\$69,501,864				\$22,402,713				\$91,904,577		

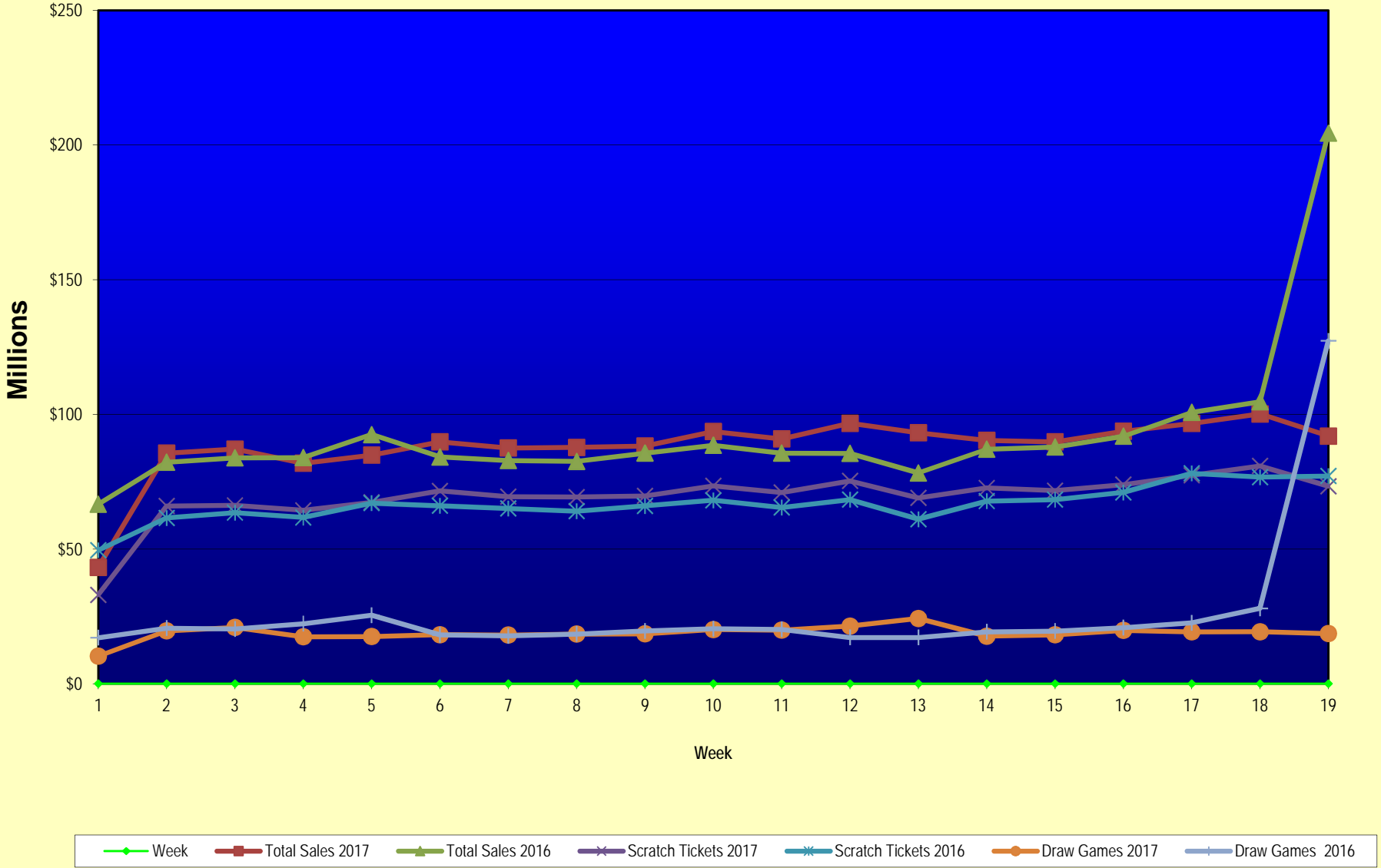
Texas Lottery Commission
Fiscal Year Over Year Change in Sales
Unaudited
FY 2017 Compared to FY 2016

			SCRATCH TICKETS				DRAW GAMES				TOTAL SALES			
FY 2017			FY 2017	FY 2016	Difference	% change - Cumulative Sales	FY 2017	FY 2016	Difference	% change - Cumulative Sales	FY 2017	FY 2016	Difference	% change - Cumulative Sales
Week	Week	Ending												
43	6/24/2017			\$69,243,660				\$24,290,311				\$93,533,971		
44	7/1/2017			\$70,782,313				\$29,331,406				\$100,113,719		
45	7/8/2017			\$67,636,625				\$38,673,314				\$106,309,939		
46	7/15/2017			\$68,064,720				\$21,311,938				\$89,376,658		
47	7/22/2017			\$69,509,821				\$21,982,689				\$91,492,510		
48	7/29/2017			\$64,486,970				\$30,699,953				\$95,186,923		
49	8/5/2017			\$69,206,183				\$18,277,075				\$87,483,258		
50	8/12/2017			\$67,165,060				\$18,101,640				\$85,266,700		
51	8/19/2017			\$69,067,938				\$18,981,681				\$88,049,619		
52	8/26/2017			\$67,821,162				\$19,606,571				\$87,427,733		
	8/31/2017 **			\$36,609,542				\$9,310,254				\$45,919,796		
Total thru Current Week			\$1,315,491,848	\$1,266,861,809	\$48,630,039	3.8%	\$357,505,127	\$492,039,755	(\$134,534,628)	-27.3%	\$1,672,996,975	\$1,758,901,564	(\$85,904,589)	-4.9%
Fiscal Year Total			\$1,315,491,848	\$3,715,807,432			\$357,505,127	\$1,351,710,491			\$1,672,996,975	\$5,067,517,923		

* FY 17 includes 3 days; FY 16 includes 5 days

** FY 17 includes 5 days; FY 16 includes 4 days

Texas Lottery Commission Fiscal Year Over Year Change in Sales



Note: Week 1 is not a full week of sales as this report is prepared on a Fiscal Year basis.

Texas Lottery Commission
Scratch Tickets by Price Point
Sales, Prize Expense, Sales Contribution and Payout Percentage With Year Over Year Changes
Unaudited

Fiscal Year	Price Point	# of Active Games	FY Sales	% of Scratch Ticket Sales	Year over Year Change in Sales	FY Prize Expense	Year over Year Change in Prize Expense	FY Sales Contribution	Year over Year Change in Contribution	Average Prize Payout %	Year over Year Change in Payout %
2016	\$1.00	15	56,995,524	4.5%		34,443,942		22,551,582		60.4%	-0.1%
Through	\$2.00	27	130,139,650	10.3%		84,732,096		45,407,554		65.1%	-0.6%
1/9/2016	\$3.00	10	98,482,410	7.8%		64,817,045		33,665,365		65.8%	-0.2%
	\$5.00	42	416,009,695	32.8%		282,645,939		133,363,756		67.9%	0.0%
	\$10.00	15	245,933,280	19.4%		172,294,685		73,638,595		70.1%	-0.3%
	\$20.00	10	257,634,400	20.3%		193,081,869		64,552,531		74.9%	0.0%
	\$50.00	3	61,666,850	4.9%		47,961,047		13,705,803		77.8%	0.0%
Total		122	\$1,266,861,809			\$879,976,623		\$386,885,186		69.5%	0.0%
2017	\$1.00	18	52,043,604	4.0%		31,433,715		20,609,889		60.4%	0.3%
Through	\$2.00	23	112,012,708	8.5%		72,948,837		39,063,871		65.1%	-0.1%
1/7/2017	\$3.00	8	90,363,366	6.9%		59,565,591		30,797,775		65.9%	0.0%
	\$5.00	42	418,579,420	31.8%		284,413,696		134,165,724		67.9%	0.0%
	\$10.00	17	277,692,150	21.1%		195,830,448		81,861,702		70.5%	0.5%
	\$20.00	11	297,209,600	22.6%		222,706,419		74,503,181		74.9%	0.0%
	\$50.00	4	67,591,000	5.1%		52,594,164		14,996,836		77.8%	0.0%
Total		123	\$1,315,491,848			\$919,492,870		\$395,998,978		69.9%	0.5%
Variance	\$1.00	3	-4,951,920		-8.7%	-3,010,227	-8.7%	-1,941,693	-8.6%	-0.03%	
2017 to	\$2.00	-4	-18,126,942		-13.9%	-11,783,259	-13.9%	-6,343,683	-14.0%	0.02%	
2016	\$3.00	-2	-8,119,044		-8.2%	-5,251,454	-8.1%	-2,867,590	-8.5%	0.10%	
	\$5.00	0	2,569,725		0.6%	1,767,757	0.6%	801,968	0.6%	0.01%	
	\$10.00	2	31,758,870		12.9%	23,535,763	13.7%	8,223,107	11.2%	0.46%	
	\$20.00	1	39,575,200		15.4%	29,624,550	15.3%	9,950,650	15.4%	-0.01%	
	\$50.00	1	5,924,150		9.6%	4,633,117	9.7%	1,291,033	9.4%	0.04%	
Total		1	\$48,630,039		3.8%	\$39,516,247	4.5%	\$9,113,792	2.4%	0.44%	

Notes - Scratch Ticket Variances

Texas Lottery Commission
Scratch Tickets by Price Point
Sales, Prize Expense, Sales Contribution and Payout Percentage With Year Over Year Changes
Unaudited

		FY 2017		FY 2016		Difference
Sales	\$1 - \$5	\$672,999,098		\$701,627,279		-\$28,628,181
Prize Exp.	\$1 - \$5	\$448,361,839		\$466,639,022		-\$18,277,183
Sales Cont.	\$1 - \$5	\$224,637,259		\$234,988,257		-\$10,350,998
Prize Exp. %	\$1 - \$5	66.6%		66.5%		0.1%
		FY 2017		FY 2016		Difference
Sales	\$10 - \$50	\$642,492,750		\$565,234,530		\$77,258,220
Prize Exp.	\$10 - \$50	\$471,131,031		\$413,337,602		\$57,793,429
Sales Cont.	\$10 - \$50	\$171,361,719		\$151,896,929		\$19,464,791
Prize Exp. %	\$10 - \$50	73.3%		73.1%		0.2%
		FY 2017		FY 2016		Difference
Sales	Scratch	\$1,315,491,848		\$1,266,861,809		\$48,630,039
Prize Exp.	Scratch	\$919,492,870		\$879,976,623		\$39,516,247
Sales Cont.	Scratch	\$395,998,978		\$386,885,186		\$9,113,792
Prize Exp. %	Scratch	69.9%		69.5%		0.4%

		FY 2017		FY 2016		Difference
Sales	\$1 - \$10	\$950,691,248		\$947,560,559		\$3,130,689
Prize Exp.	\$1 - \$10	\$644,192,287		\$638,933,707		\$5,258,580
Sales Cont.	\$1 - \$10	\$306,498,961		\$308,626,852		-\$2,127,891
Prize Exp. %	\$1 - \$10	67.8%		67.4%		0.3%
		FY 2017		FY 2016		Difference
Sales	\$20 - \$50	\$364,800,600		\$319,301,250		\$45,499,350
Prize Exp.	\$20 - \$50	\$275,300,583		\$241,042,916		\$34,257,667
Sales Cont.	\$20 - \$50	\$89,500,017		\$78,258,334		\$11,241,683
Prize Exp. %	\$20 - \$50	75.5%		75.5%		0.0%
		FY 2017		FY 2016		Difference
Sales	Scratch	\$1,315,491,848		\$1,266,861,809		\$48,630,039
Prize Exp.	Scratch	\$919,492,870		\$879,976,623		\$39,516,247
Sales Cont.	Scratch	\$395,998,978		\$386,885,186		\$9,113,792
Prize Exp. %	Scratch	69.9%		69.5%		0.4%

Texas Lottery Commission
 Weekly Sales Summary
 & Comparison to Previous Week
 Unaudited

	Week Ending 1/07/2017		Week Ending 12/31/2016			
	<u>THIS WEEK</u>	% of Sales	<u>LAST WEEK</u>	% of Sales	<u>\$ change</u>	<u>% change</u>
Total Sales	<u>\$91,940,268</u>		<u>\$100,158,015</u>		<u>-\$8,217,747</u>	-8.20%
Scratch Tickets	<u>\$73,328,624</u>	79.8%	<u>\$80,868,854</u>	80.7%	<u>-\$7,540,230</u>	-9.32%
Lotto	\$2,097,687	2.3%	\$2,282,841	2.3%	-\$185,154	-8.11%
Lotto Extra	\$408,605	0.4%	\$440,711	0.4%	-\$32,106	-7.29%
Pick 3	\$4,745,822	5.2%	\$4,899,905	4.9%	-\$154,083	-3.14%
Pick 3 Sum It Up	\$91,405	0.1%	\$94,021	0.1%	-\$2,616	-2.78%
Cash Five	\$842,694	0.9%	\$861,849	0.9%	-\$19,155	-2.22%
Texas Two Step	\$819,153	0.9%	\$887,304	0.9%	-\$68,151	-7.68%
Mega Millions	\$2,524,889	2.7%	\$2,362,970	2.4%	\$161,919	6.85%
Megaplier	\$654,478	0.7%	\$630,614	0.6%	\$23,864	3.78%
Daily 4	\$1,898,406	2.1%	\$2,004,547	2.0%	-\$106,141	-5.30%
Daily 4 Sum It Up	\$110,548	0.1%	\$116,201	0.1%	-\$5,653	-4.86%
Powerball	\$3,107,618	3.4%	\$3,351,922	3.3%	-\$244,304	-7.29%
Power Play	\$474,348	0.5%	\$506,969	0.5%	-\$32,621	-6.43%
All or Nothing	\$550,422	0.6%	\$555,832	0.6%	-\$5,410	-0.97%
Texas Triple Chance	\$285,570	0.3%	\$293,476	0.3%	-\$7,906	-2.69%
Total Draw Game Sales	<u>\$18,611,644</u>		<u>\$19,289,161</u>		<u>-\$677,517</u>	-3.51%

* Totals may not sum due to rounding.

Texas Lottery Commission
Weekly Sales Summary
Unaudited

SCRATCH TICKETS
TOP TEN SELLING GAMES

For the week ending: 1/07/2017

Rank	Price Point	Game	Sales (Millions)
1	\$ 5	20X THE CASH	\$ 4.197
2	\$ 10	CASHWORD MULTIPLIER	\$ 3.445
3	\$ 10	\$1 MILLION HIGH ROLLER	\$ 3.320
4	\$ 5	SUPER LOTERIA	\$ 3.067
5	\$ 50	\$7,500,000 ULTIMATE CASH	\$ 2.966
6	\$ 20	100X THE CASH	\$ 2.697
7	\$ 10	50X THE CASH	\$ 2.616
8	\$ 3	BONUS CASHWORD	\$ 2.362
9	\$ 10	HOLIDAY COUNTDOWN SUPER TICKET	\$ 2.306
10	\$ 20	SUPER BREAK THE BANK	\$ 2.300

Texas Lottery Commission
Prize Payout Tracking Report
Unaudited

Through the week ending: 1/07/2017

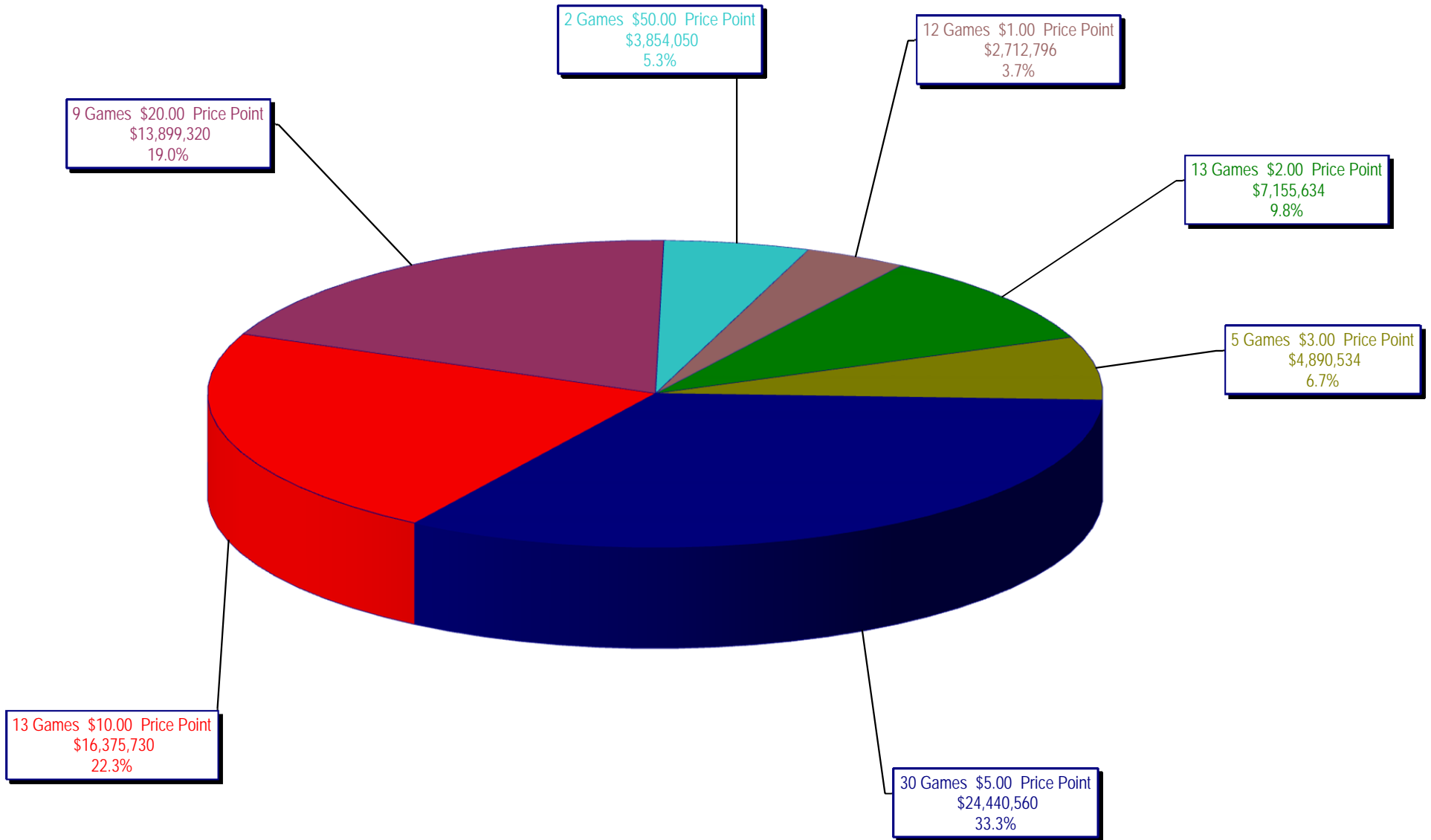
Draw Game Sales

		FY Sales Through Week Ending 1/7/2017		FY Prize Expense Through Week Ending 1/7/2017	Actual* Prize Payout	Base Payout (Prize Pool)
Lotto	\$	39,147,633	\$	19,581,002	50.02%	50.00%
Lotto Extra		7,506,960		4,044,070	53.87%	53.70%
Pick 3		87,093,419		43,913,330	50.42%	50.00%
Pick 3 Sum It Up		1,655,610		746,798	45.11%	50.00%
Cash Five		15,544,171		7,772,111	50.00%	50.00%
Texas Two Step		19,384,812		10,060,426	51.90%	50.00%
Mega Millions		37,417,672		19,087,502	51.01%	50.00%**
Megaplier		10,245,908		5,125,548	50.03%	N/A
Daily 4		32,910,633		20,214,775	61.42%	50.00%
Daily 4 Sum It Up		1,747,679		2,290,512	131.06%	50.00%
Powerball		77,976,829		39,007,745	50.02%	50.00%**
Power Play		11,011,212		5,510,148	50.04%	N/A
All or Nothing		10,265,246		5,573,528	54.30%	55.98%
Texas Triple Chance		5,597,344		2,843,779	50.81%	54.42%
Totals	\$	357,505,127	\$	185,771,274	51.96%	

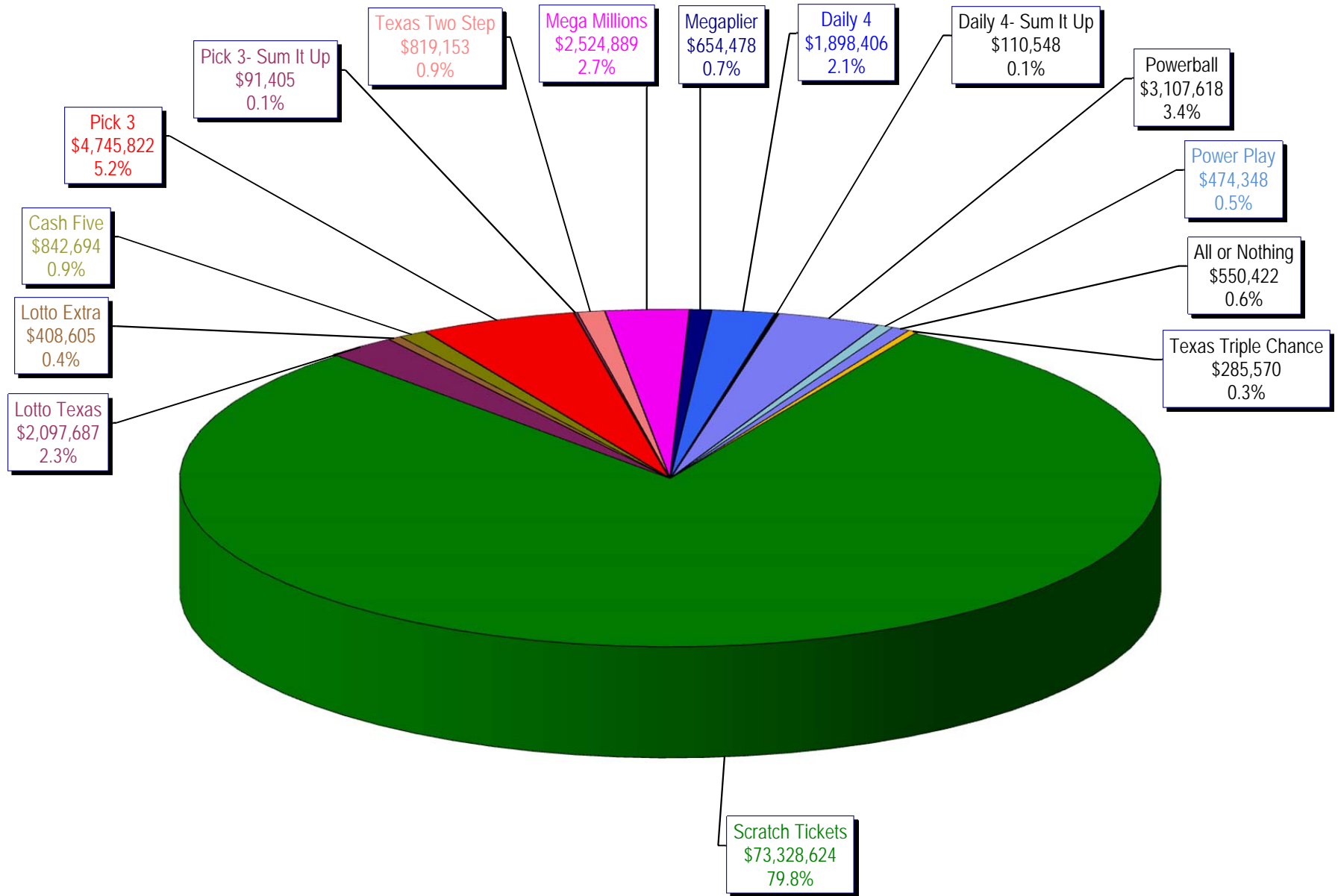
* Before Unclaimed Prizes

**Estimated; depends on # of guaranteed prizes won in Texas

Texas Lottery Commission
Scratch Ticket Sales
For the week ending 1/07/2017
(Unaudited)



Texas Lottery Commission
All Game Sales
For the week ending 1/07/2017
(Unaudited)



Texas Lottery Commission - Weekly Sales Summary for FY 2017 (Unaudited)

Week Ended	Scratch Tickets	New Games & Dates	Lotto Texas	Jackpot W S	Lotto Extra	Pick 3	Pick 3 Sum It Up	Cash Five	Texas Two Step	Jackpot M TH	Mega Millions	Jackpot T F	Megaplier	Daily 4	Daily 4 Sum It Up	Powerball	Jackpot W S	Power Play	All or Nothing	Texas Triple Chance	Total	Per Cap.
9/3/2016*	69,589,808	0	2,106,552	8.75 9.25	402,665	4,798,985	92,214	843,135	810,947	200 200	2,331,141	84 92	631,299	1,788,614	96,398	4,189,234	154 170	603,430	528,102	306,194	89,118,717	3.24
9/10/2016	65,952,418	1810 (\$1.N); 1809 (\$1.N); 1811 (\$5.N) - 9/06/16	2,095,828	9.75 10.25	399,944	4,590,651	86,697	818,614	862,148	225 275	2,490,552	101 111	655,066	1,647,119	87,455	4,473,836	186 205	628,810	506,718	291,940	85,587,795	3.12
9/17/2016	66,196,270	0	2,127,440	11 11.75	405,936	4,553,039	86,110	822,240	1,180,444	400 550	2,661,252	122 133	692,583	1,705,629	91,610	5,096,928	222 244	696,626	503,466	291,988	87,111,560	3.17
9/24/2016	64,383,005	1793 (\$2.N); 1782 (\$5.N); 1781 (\$10.N) - 9/19/16	2,141,721	12.25 13	404,127	4,551,066	83,958	811,604	1,465,789	700 900	1,733,288	15 20	489,347	1,680,793	90,386	2,790,676	40 50	429,512	503,041	275,858	81,834,170	2.98
10/1/2016	67,349,951	0	2,203,652	13.25 14	414,603	4,642,047	91,016	857,979	816,836	200 225	1,840,801	25 30	515,384	1,688,464	88,184	2,960,772	60 70	455,619	589,964	354,532	84,869,803	3.09
10/8/2016	71,598,690	1772 (\$1.N); 1770 (\$2.N); 1813 (\$5.N); 1779 (\$20.N) - 10/03/16	2,211,941	14.5 15.5	419,062	4,900,537	94,965	867,520	849,234	200 225	1,925,289	35 41	540,723	1,780,544	92,908	3,109,092	80 91	471,027	611,898	336,368	89,809,797	3.27
10/15/2016	69,444,762	0	2,207,002	16 16.75	416,802	4,549,017	89,171	836,548	1,024,493	300 425	1,780,458	49 15	496,567	1,679,519	87,007	3,499,528	107 122	510,617	577,343	321,190	87,520,023	3.19
10/22/2016	69,317,066	1814 (\$3.N); 1815 (\$5.N); 1832 (\$50.N) - 10/17/16	2,222,089	17 18	420,632	4,457,898	84,115	836,942	1,260,293	575 750	1,714,985	20 25	482,408	1,636,471	83,009	3,800,444	136 151	542,655	564,808	315,588	87,739,402	3.19
10/29/2016	69,729,599	0	2,269,908	18.5 19.25	430,487	4,511,234	86,114	833,125	779,029	200 200	1,781,093	30 35	500,203	1,711,520	88,083	4,097,116	164 180	575,614	565,102	306,622	88,264,847	3.21
11/5/2016	73,451,702	0	2,168,782	20 5	414,167	4,996,360	97,149	859,798	796,978	200 200	1,904,765	40 47	534,014	1,913,301	100,223	4,796,408	198 217	660,205	591,246	318,544	93,603,641	3.41
11/12/2016	70,998,320	1816 (\$2.N); 1808 (\$5.N); 1817 (\$5.N); 1818 (\$10.N) - 11/07/16	1,893,513	5.25 5.5	368,470	4,642,196	89,581	833,195	869,408	225 275	1,964,313	54 65	541,639	1,741,306	90,176	5,313,351	236 258	715,597	563,280	299,436	90,923,780	3.31
11/19/2016	75,265,196	1819 (\$1.N); 1820 (\$5.N); 1869 (\$10.N) - 11/16/16	1,924,291	5.75 6	376,977	4,595,331	87,939	830,211	1,078,765	400 550	2,072,033	73 82	567,597	1,715,227	91,335	6,391,094	293 320	836,372	557,058	300,408	96,689,833	3.52
11/26/2016	68,983,157	0	1,945,264	6.25 6.5	383,703	4,472,018	83,761	795,696	737,931	200 225	1,698,370	15 20	487,160	1,649,794	84,195	9,839,524	359 403	1,235,062	527,328	283,526	93,206,488	3.39
12/3/2016	72,688,514	0	1,989,472	6.75 7	386,573	4,901,443	91,365	857,900	1,002,319	275 375	1,761,923	25 30	499,193	1,823,528	94,278	2,932,322	40 54	444,551	569,036	299,426	90,341,842	3.29
12/10/2016	71,676,549	1807 (\$5.N); 1866 (\$10.N); 1822 (\$20.N) - 12/05/16	2,006,953	7.25 7.5	388,230	4,748,391	88,668	849,940	1,337,879	525 700	1,830,451	35 43	505,981	1,812,622	88,690	3,176,570	67 85	475,269	551,930	289,016	89,827,139	3.27
12/17/2016	73,909,726	0	2,048,592	7.75 8	398,632	4,778,144	88,676	854,061	1,906,792	900 1,125	1,966,377	51 59	539,946	1,844,818	94,354	3,892,738	100 119	561,900	551,086	288,218	93,724,059	3.41
12/24/2016	77,369,179	1823 (\$2.N); 1824 (\$5.N) - 12/19/16	2,210,042	8.25 8.75	421,128	4,973,874	91,323	861,510	1,331,122	1,375 200	2,200,791	67 76	590,601	2,035,860	117,672	3,119,154	40 50	473,229	558,224	291,886	96,645,594	3.52
12/31/2016	80,868,854	0	2,282,841	9.5 10.25	440,711	4,899,905	94,021	861,849	887,304	225 275	2,362,970	85 96	630,614	2,004,547	116,201	3,351,922	60 70	506,969	555,832	293,476	100,158,015	3.65
1/7/2017	73,328,624	1825 (\$1.N); 1826 (\$5.N); 1827 (\$10.N) - 01/03/17	2,097,687	10.75 11.5	408,605	4,745,822	91,405	842,694	819,153	200 200	2,524,889	105 117	654,478	1,898,406	110,548	3,107,618	80 94	474,348	550,422	285,570	91,940,268	3.35
weekly change	-9.3%		-8.1%		-7.3%	-3.1%	-2.8%	-2.2%	-7.7%		6.9%		3.8%	-5.3%	-4.9%	-7.3%		-6.4%	-1.0%	-2.7%		-8.2%
	SALES		SALES		SALES	SALES	SALES	SALES	SALES		SALES		SALES	SALES	SALES	SALES		SALES	SALES	SALES	SALES	% of Sales
Calendar Year to date	73,328,624		2,097,687		408,605	4,745,822	91,405	842,694	819,153		2,524,889		654,478	1,898,406	110,548	3,107,618		474,348	550,422	285,570	91,940,268	100.0%
Fiscal Year to date 2017	1,315,491,848		39,147,633		7,506,960	87,093,419	1,655,610	15,544,171	19,384,812		37,417,672		10,245,908	32,910,633	1,747,679	77,976,829		11,011,212	10,265,246	5,597,344	1,672,996,975	100.0%
*Full week includes 4 days from FY16																						