



WEEKLY SALES SUMMARY

Unaudited

Week Ending: 1/09/2016

Texas Lottery Commission
Fiscal Year to Date Sales Comparison
Unaudited

Through the Week Ending 1/09/2016 (19 Weeks)

Sales by Game	FY 2014 *	FY 2015 **	FY 2016	\$ Change		% Change	
				FY 2016 to FY 2014	FY 2016 to FY 2015	FY 2016 to FY 2014	FY 2016 to FY 2015
Scratch Tickets	\$ 1,164,761,753	\$ 1,207,713,174	\$ 1,266,861,809	\$ 102,100,056	\$ 59,148,635	8.8%	4.9%
Lotto Texas	48,669,633	44,102,314	46,705,350	-1,964,283	2,603,036	-4.0%	5.9%
Lotto Extra	6,282,506	6,669,477	7,886,720	1,604,214	1,217,243	25.5%	18.3%
Pick 3	91,621,732	90,485,896	90,705,502	-916,230	219,606	-1.0%	0.2%
Pick 3 Sum It Up	1,819,289	1,725,262	1,806,965	-12,324	81,703	-0.7%	4.7%
Cash Five	19,294,375	18,044,659	16,693,565	-2,600,810	-1,351,094	-13.5%	-7.5%
Texas Two Step	20,357,436	19,559,346	18,725,522	-1,631,914	-833,824	-8.0%	-4.3%
Mega Millions	91,752,674	61,027,084	48,660,568	-43,092,106	-12,366,516	-47.0%	-20.3%
Megaplier	18,720,979	13,759,155	12,001,725	-6,719,254	-1,757,430	-35.9%	-12.8%
Daily 4	30,203,282	30,581,369	31,378,498	1,175,216	797,129	3.9%	2.6%
Daily 4 Sum It Up	1,857,595	1,821,691	1,623,961	-233,634	-197,730	-12.6%	-10.9%
Powerball	78,136,983	62,286,915	175,861,917	97,724,934	113,575,002	125.1%	182.3%
Power Play	9,275,731	8,180,014	18,828,040	9,552,309	10,648,026	103.0%	130.2%
All or Nothing	17,000,284	14,067,972	11,191,576	-5,808,708	-2,876,396	-34.2%	-20.4%
Monopoly	- ¹	2,656,590	-	-	-2,656,590	-	-100.0%
Texas Triple Chance	-	-	9,969,847	9,969,847	9,969,847	-	-
Total	\$ 1,599,754,251	\$ 1,582,680,918	\$ 1,758,901,564	\$ 159,147,313	\$ 176,220,646	9.9%	11.1%

* 2 extra days

** 1 extra day

¹ Monopoly sales were suspended after draw on 12/12/14

Texas Lottery Commission
Fiscal Year to Date Cumulative Average Sales Comparison
Unaudited

Through the Week Ending 1/09/2016 (19 Weeks)

Sales by Game	FY 2014	FY 2015	FY 2016
Scratch Tickets	\$ 8,757,607	\$ 9,149,342	\$ 9,670,701
Lotto Texas	365,937	334,108	356,529
Lotto Extra	47,237	50,526	60,204
Pick 3	688,885	685,499	692,408
Pick 3 Sum It Up	13,679	13,070	13,794
Cash Five	145,070	136,702	127,432
Texas Two Step	153,063	148,177	142,943
Mega Millions	689,870	462,326	371,455
Megaplier	140,759	104,236	91,616
Daily 4	227,092	231,677	239,531
Daily 4 Sum It Up	13,967	13,801	12,397
Powerball	587,496	471,871	1,342,457
Power Play	69,742	61,970	143,725
All or Nothing	127,822	106,576	85,432
Monopoly	- **	48,302	-
Texas Triple Chance	-	-	* 94,951
Total	\$ <u>12,028,227</u>	\$ <u>12,018,183</u>	\$ <u>13,445,575</u>

thru 1/11/2014
133 days

**

thru 1/10/2015
132 days
55 days

*

thru 1/09/2016
131 days
105 days

Texas Lottery Commission
Fiscal Year Over Year Change in Sales
Unaudited
FY 2016 Compared to FY 2015

			SCRATCH TICKETS				DRAW GAMES				TOTAL SALES			
FY 2016			% change -				% change -				% change -			
Week	Week	Ending	FY 2016	FY 2015	Difference	Cumulative Sales	FY 2016	FY 2015	Difference	Cumulative Sales	FY 2016	FY 2015	Difference	Cumulative Sales
1	9/5/2015 *		\$49,534,249	\$54,911,801	(\$5,377,552)	-9.8%	\$17,091,724	\$17,482,488	(\$390,765)	-2.2%	\$66,625,973	\$72,394,289	(\$5,768,317)	-8.0%
2	9/12/2015		\$61,566,291	\$61,436,533	\$129,758	0.2%	\$20,630,922	\$19,097,081	\$1,533,841	8.0%	\$82,197,213	\$80,533,614	\$1,663,599	2.1%
3	9/19/2015		\$63,530,657	\$60,959,234	\$2,571,423	4.2%	\$20,327,253	\$20,567,894	(\$240,641)	-1.2%	\$83,857,910	\$81,527,128	\$2,330,782	2.9%
4	9/26/2015		\$61,731,400	\$59,710,056	\$2,021,344	3.4%	\$22,252,290	\$19,920,828	\$2,331,462	11.7%	\$83,983,690	\$79,630,884	\$4,352,806	5.5%
5	10/3/2015		\$67,048,415	\$62,119,854	\$4,928,561	7.9%	\$25,436,791	\$18,531,421	\$6,905,370	37.3%	\$92,485,206	\$80,651,275	\$11,833,931	14.7%
6	10/10/2015		\$66,049,706	\$61,253,665	\$4,796,041	7.8%	\$18,138,977	\$18,985,332	(\$846,355)	-4.5%	\$84,188,683	\$80,238,997	\$3,949,687	4.9%
7	10/17/2015		\$65,073,593	\$60,230,048	\$4,843,545	8.0%	\$17,776,414	\$19,538,402	(\$1,761,988)	-9.0%	\$82,850,007	\$79,768,450	\$3,081,558	3.9%
8	10/24/2015		\$64,087,437	\$62,384,112	\$1,703,325	2.7%	\$18,450,464	\$21,475,643	(\$3,025,179)	-14.1%	\$82,537,901	\$83,859,755	(\$1,321,854)	-1.6%
9	10/31/2015		\$66,025,374	\$63,404,713	\$2,620,661	4.1%	\$19,568,150	\$23,568,817	(\$4,000,668)	-17.0%	\$85,593,524	\$86,973,530	(\$1,380,007)	-1.6%
10	11/7/2015		\$68,137,192	\$65,486,719	\$2,650,473	4.0%	\$20,398,351	\$23,749,032	(\$3,350,681)	-14.1%	\$88,535,543	\$89,235,751	(\$700,208)	-0.8%
11	11/14/2015		\$65,449,428	\$61,745,521	\$3,703,907	6.0%	\$20,169,382	\$17,449,604	\$2,719,779	15.6%	\$85,618,810	\$79,195,125	\$6,423,686	8.1%
12	11/21/2015		\$68,364,421	\$66,353,583	\$2,010,838	3.0%	\$17,174,606	\$17,108,084	\$66,522	0.4%	\$85,539,027	\$83,461,667	\$2,077,360	2.5%
13	11/28/2015		\$61,091,628	\$60,471,184	\$620,444	1.0%	\$17,168,993	\$17,303,129	(\$134,136)	-0.8%	\$78,260,621	\$77,774,313	\$486,309	0.6%
14	12/5/2015		\$67,830,827	\$66,648,696	\$1,182,131	1.8%	\$19,252,418	\$18,862,425	\$389,994	2.1%	\$87,083,245	\$85,511,121	\$1,572,125	1.8%
15	12/12/2015		\$68,324,452	\$65,708,630	\$2,615,822	4.0%	\$19,529,408	\$18,649,598	\$879,811	4.7%	\$87,853,860	\$84,358,228	\$3,495,633	4.1%
16	12/19/2015		\$71,041,258	\$68,551,298	\$2,489,960	3.6%	\$20,824,840	\$19,051,100	\$1,773,740	9.3%	\$91,866,098	\$87,602,398	\$4,263,700	4.9%
17	12/26/2015		\$78,125,965	\$73,858,618	\$4,267,347	5.8%	\$22,586,417	\$20,006,357	\$2,580,061	12.9%	\$100,712,382	\$93,864,975	\$6,847,408	7.3%
18	1/2/2016		\$76,712,975	\$67,733,268	\$8,979,707	13.3%	\$27,972,880	\$21,355,167	\$6,617,714	31.0%	\$104,685,855	\$89,088,435	\$15,597,421	17.5%
19	1/9/2016		\$77,136,541	\$64,745,641	\$12,390,900	19.1%	\$127,289,478	\$22,265,347	\$105,024,131	471.7%	\$204,426,019	\$87,010,988	\$117,415,031	134.9%
20	1/16/2016			\$64,015,166				\$23,694,617				\$87,709,783		
21	1/23/2016			\$62,569,156				\$19,765,442				\$82,334,598		
22	1/30/2016			\$68,001,588				\$22,877,000				\$90,878,588		
23	2/6/2016			\$75,677,650				\$31,662,209				\$107,339,859		
24	2/13/2016			\$75,368,712				\$46,091,747				\$121,460,459		
25	2/20/2016			\$74,833,076				\$19,865,172				\$94,698,248		
26	2/27/2016			\$69,918,013				\$19,735,352				\$89,653,365		
27	3/5/2016			\$74,848,961				\$19,946,068				\$94,795,029		
28	3/12/2016			\$70,079,409				\$20,044,562				\$90,123,971		
29	3/19/2016			\$70,368,686				\$18,480,795				\$88,849,481		
30	3/26/2016			\$70,280,600				\$17,595,205				\$87,875,805		
31	4/2/2016			\$74,369,952				\$18,378,917				\$92,748,869		
32	4/9/2016			\$67,416,817				\$18,594,844				\$86,011,661		
33	4/16/2016			\$68,393,316				\$18,104,632				\$86,497,948		
34	4/23/2016			\$70,078,182				\$17,957,150				\$88,035,332		
35	4/30/2016			\$71,744,718				\$18,961,113				\$90,705,831		
36	5/7/2016			\$73,415,978				\$20,210,341				\$93,626,319		
37	5/14/2016			\$72,152,109				\$20,362,774				\$92,514,883		
38	5/21/2016			\$70,399,950				\$21,246,276				\$91,646,226		
39	5/28/2016			\$68,547,554				\$22,227,946				\$90,775,500		
40	6/4/2016			\$71,254,006				\$20,739,703				\$91,993,709		
41	6/11/2016			\$65,878,375				\$17,216,403				\$83,094,778		
42	6/18/2016			\$66,658,742				\$17,340,531				\$83,999,273		

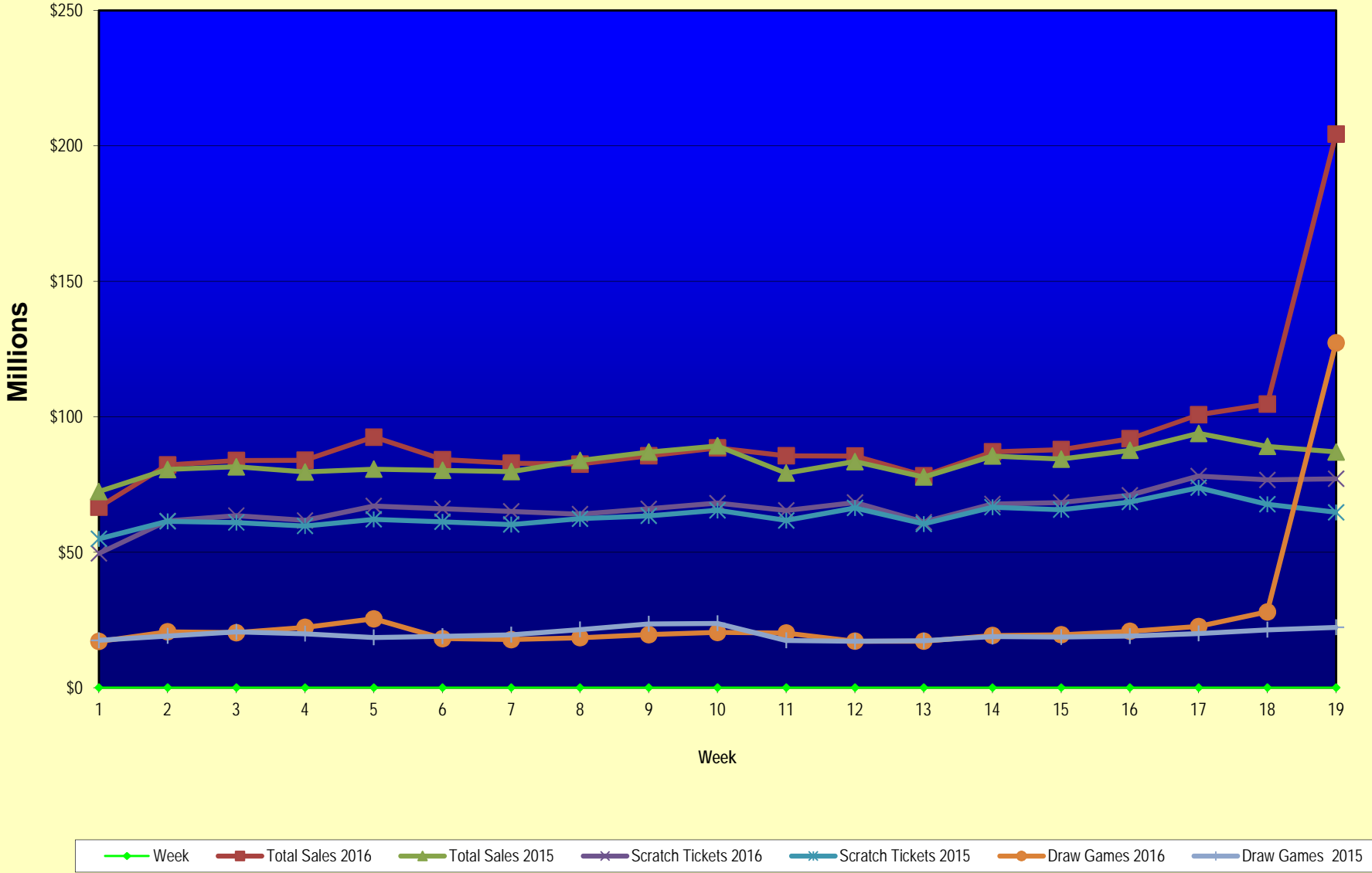
Texas Lottery Commission
Fiscal Year Over Year Change in Sales
Unaudited
FY 2016 Compared to FY 2015

			SCRATCH TICKETS				DRAW GAMES				TOTAL SALES			
FY 2016			FY 2016	FY 2015	Difference	% change - Cumulative Sales	FY 2016	FY 2015	Difference	% change - Cumulative Sales	FY 2016	FY 2015	Difference	% change - Cumulative Sales
Week	Week	Ending												
43	6/25/2016			\$65,282,276				\$16,873,368				\$82,155,644		
44	7/2/2016			\$67,757,752				\$18,007,540				\$85,765,292		
45	7/9/2016			\$64,718,254				\$18,203,985				\$82,922,239		
46	7/16/2016			\$64,957,977				\$18,792,785				\$83,750,762		
47	7/23/2016			\$62,541,241				\$18,229,965				\$80,771,206		
48	7/30/2016			\$66,468,460				\$17,742,489				\$84,210,949		
49	8/6/2016			\$62,412,598				\$17,331,374				\$79,743,972		
50	8/13/2016			\$62,089,389				\$17,501,599				\$79,590,988		
51	8/20/2016			\$62,437,148				\$17,779,458				\$80,216,606		
52	8/27/2016			\$61,403,206				\$18,529,560				\$79,932,766		
	8/31/2016 **			\$17,309,621				\$3,279,958				\$20,589,579		
Total thru Current Week			\$1,266,861,809	\$1,207,713,174	\$59,148,635	4.9%	\$492,039,755	\$374,967,744	\$117,072,011	31.2%	\$1,758,901,564	\$1,582,680,918	\$176,220,646	11.1%
Fiscal Year Total			\$1,266,861,809	\$3,481,361,812			\$492,039,755	\$1,048,338,613			\$1,758,901,564	\$4,529,700,425		

* FY 16 includes 5 days; FY 15 includes 6 days

** FY 16 includes 4 days; FY 15 includes 2 days

Texas Lottery Commission Fiscal Year Over Year Change in Sales



Note: Week 1 is not a full week of sales as this report is prepared on a Fiscal Year basis.

Texas Lottery Commission
Scratch Tickets by Price Point
Sales, Prize Expense, Sales Contribution and Payout Percentage With Year Over Year Changes
Unaudited

Fiscal Year	Price Point	# of Active Games	FY Sales	% of Scratch Ticket Sales	Year over Year Change in Sales	FY Prize Expense	Year over Year Change in Prize Expense	FY Sales Contribution	Year over Year Change in Contribution	Average Prize Payout %	Year over Year Change in Payout %
2015	\$1.00	18	60,908,038	5.0%		37,179,783		23,728,255		61.0%	1.9%
Through	\$2.00	27	126,743,908	10.5%		83,552,016		43,191,892		65.9%	1.7%
1/10/2015	\$3.00	36	118,818,018	9.8%		78,314,667		40,503,351		65.9%	0.4%
	\$5.00	38	385,647,370	31.9%		261,991,468		123,655,902		67.9%	0.0%
	\$10.00	14	238,654,870	19.8%		168,234,699		70,420,171		70.5%	0.3%
	\$20.00	9	221,980,320	18.4%		166,430,348		55,549,972		75.0%	0.1%
	\$50.00	3	54,960,650	4.6%		42,714,155		12,246,495		77.7%	0.1%
Total		145	\$1,207,713,174			\$838,417,135		\$369,296,039		69.4%	0.7%
2016	\$1.00	15	56,995,524	4.5%		34,443,942		22,551,582		60.4%	-0.1%
thru	\$2.00	27	130,139,650	10.3%		84,732,096		45,407,554		65.1%	-0.6%
1/9/2016	\$3.00	10	98,482,410	7.8%		64,817,045		33,665,365		65.8%	-0.2%
	\$5.00	42	416,009,695	32.8%		282,645,939		133,363,756		67.9%	0.0%
	\$10.00	15	245,933,280	19.4%		172,294,685		73,638,595		70.1%	-0.3%
	\$20.00	10	257,634,400	20.3%		193,081,869		64,552,531		74.9%	0.0%
	\$50.00	3	61,666,850	4.9%		47,961,047		13,705,803		77.8%	0.0%
Total		122	\$1,266,861,809			\$879,976,623		\$386,885,186		69.5%	0.0%
Variance	\$1.00	-3	-3,912,514		-6.4%	-2,735,841	-7.4%	-1,176,673	-5.0%	-0.61%	
2016 to	\$2.00	0	3,395,742		2.7%	1,180,081	1.4%	2,215,661	5.1%	-0.81%	
2015	\$3.00	-26	-20,335,608		-17.1%	-13,497,622	-17.2%	-6,837,986	-16.9%	-0.10%	
	\$5.00	4	30,362,325		7.9%	20,654,471	7.9%	9,707,854	7.9%	0.01%	
	\$10.00	1	7,278,410		3.0%	4,059,986	2.4%	3,218,424	4.6%	-0.44%	
	\$20.00	1	35,654,080		16.1%	26,651,521	16.0%	9,002,559	16.2%	-0.03%	
	\$50.00	0	6,706,200		12.2%	5,246,892	12.3%	1,459,308	11.9%	0.06%	
Total		-23	\$59,148,635		4.9%	\$41,559,489	5.0%	\$17,589,146	4.8%	0.04%	

Notes - Scratch Ticket Variances

Texas Lottery Commission
Scratch Tickets by Price Point
Sales, Prize Expense, Sales Contribution and Payout Percentage With Year Over Year Changes
Unaudited

		FY 2016	FY 2015	Difference
Sales	\$1 - \$5	\$701,627,279	\$692,117,334	\$9,509,945
Prize Exp.	\$1 - \$5	\$466,639,022	\$461,037,933	\$5,601,089
Sales Cont.	\$1 - \$5	\$234,988,257	\$231,079,401	\$3,908,856
Prize Exp. %	\$1 - \$5	66.5%	66.6%	-0.1%
		FY 2016	FY 2015	Difference
Sales	\$10 - \$50	\$565,234,530	\$515,595,840	\$49,638,690
Prize Exp.	\$10 - \$50	\$413,337,602	\$377,379,201	\$35,958,400
Sales Cont.	\$10 - \$50	\$151,896,929	\$138,216,639	\$13,680,290
Prize Exp. %	\$10 - \$50	73.1%	73.2%	-0.1%
		FY 2016	FY 2015	Difference
Sales	Scratch	\$1,266,861,809	\$1,207,713,174	\$59,148,635
Prize Exp.	Scratch	\$879,976,623	\$838,417,135	\$41,559,489
Sales Cont.	Scratch	\$386,885,186	\$369,296,039	\$17,589,146
Prize Exp. %	Scratch	69.5%	69.4%	0.0%

		FY 2016	FY 2015	Difference
Sales	\$1 - \$10	\$947,560,559	\$930,772,204	\$16,788,355
Prize Exp.	\$1 - \$10	\$638,933,707	\$629,272,632	\$9,661,075
Sales Cont.	\$1 - \$10	\$308,626,852	\$301,499,572	\$7,127,280
Prize Exp. %	\$1 - \$10	67.4%	67.6%	-0.2%
		FY 2016	FY 2015	Difference
Sales	\$20 - \$50	\$319,301,250	\$276,940,970	\$42,360,280
Prize Exp.	\$20 - \$50	\$241,042,916	\$209,144,503	\$31,898,414
Sales Cont.	\$20 - \$50	\$78,258,334	\$67,796,467	\$10,461,866
Prize Exp. %	\$20 - \$50	75.5%	75.5%	0.0%
		FY 2016	FY 2015	Difference
Sales	Scratch	\$1,266,861,809	\$1,207,713,174	\$59,148,635
Prize Exp.	Scratch	\$879,976,623	\$838,417,135	\$41,559,489
Sales Cont.	Scratch	\$386,885,186	\$369,296,039	\$17,589,146
Prize Exp. %	Scratch	69.5%	69.4%	0.0%

Texas Lottery Commission
Weekly Sales Summary
& Comparison to Previous Week
 Unaudited

	Week Ending 1/09/2016	% of Sales	Week Ending 1/02/2016	% of Sales	\$ change	% change
	<u>THIS WEEK</u>		<u>LAST WEEK</u>			
Total Sales	<u>\$204,426,019</u>		<u>\$104,685,855</u>		<u>\$99,740,164</u>	95.28%
Scratch Tickets	<u>\$77,136,541</u>	37.7%	<u>\$76,712,975</u>	73.3%	<u>\$423,566</u>	0.55%
Lotto	\$3,569,884	1.7%	\$2,598,993	2.5%	\$970,891	37.36%
Lotto Extra	\$580,778	0.3%	\$446,634	0.4%	\$134,144	30.03%
Pick 3	\$4,782,398	2.3%	\$4,857,347	4.6%	-\$74,949	-1.54%
Pick 3 Sum It Up	\$102,725	0.1%	\$95,570	0.1%	\$7,156	7.49%
Cash Five	\$899,480	0.4%	\$883,605	0.8%	\$15,875	1.80%
Texas Two Step	\$1,029,458	0.5%	\$857,640	0.8%	\$171,818	20.03%
Mega Millions	\$4,896,815	2.4%	\$3,175,442	3.0%	\$1,721,373	54.21%
Megaplier	\$1,100,345	0.5%	\$756,602	0.7%	\$343,743	45.43%
Daily 4	\$1,668,434	0.8%	\$1,731,866	1.7%	-\$63,432	-3.66%
Daily 4 Sum It Up	\$91,670	0.0%	\$91,457	0.1%	\$213	0.23%
Powerball	\$98,440,136	48.2%	\$10,213,886	9.8%	\$88,226,250	863.79%
Power Play	\$8,915,982	4.4%	\$1,168,791	1.1%	\$7,747,191	662.84%
All or Nothing	\$589,972	0.3%	\$559,472	0.5%	\$30,500	5.45%
Texas Triple Chance	\$621,402	0.3%	\$535,576	0.5%	\$85,826	16.02%
Total Draw Game Sales	<u>\$127,289,478</u>		<u>\$27,972,880</u>		<u>\$99,316,598</u>	355.05%

* Totals may not sum due to rounding.

Texas Lottery Commission
Weekly Sales Summary
Unaudited

SCRATCH TICKETS
TOP TEN SELLING GAMES

For the week ending: 1/09/2016

Rank	Price Point	Game	Sales (Millions)
1	\$ 20	HIT \$1,000,000	\$ 5.437
2	\$ 5	HIT \$200,000	\$ 4.374
3	\$ 5	SUPER LOTERIA	\$ 4.146
4	\$ 10	HIT \$500,000	\$ 2.785
5	\$ 20	HOLIDAY GAME BOOK	\$ 2.757
6	\$ 10	CASHWORD MULTIPLIER	\$ 2.718
7	\$ 50	DIAMOND DOLLARS	\$ 2.552
8	\$ 3	BONUS CASHWORD	\$ 2.437
9	\$ 10	HAPPY HOLIDAYS	\$ 2.387
10	\$ 20	\$1,000,000 INSTANT CASHOUT	\$ 2.372

Texas Lottery Commission
Prize Payout Tracking Report
Unaudited

Through the week ending: 1/09/2016

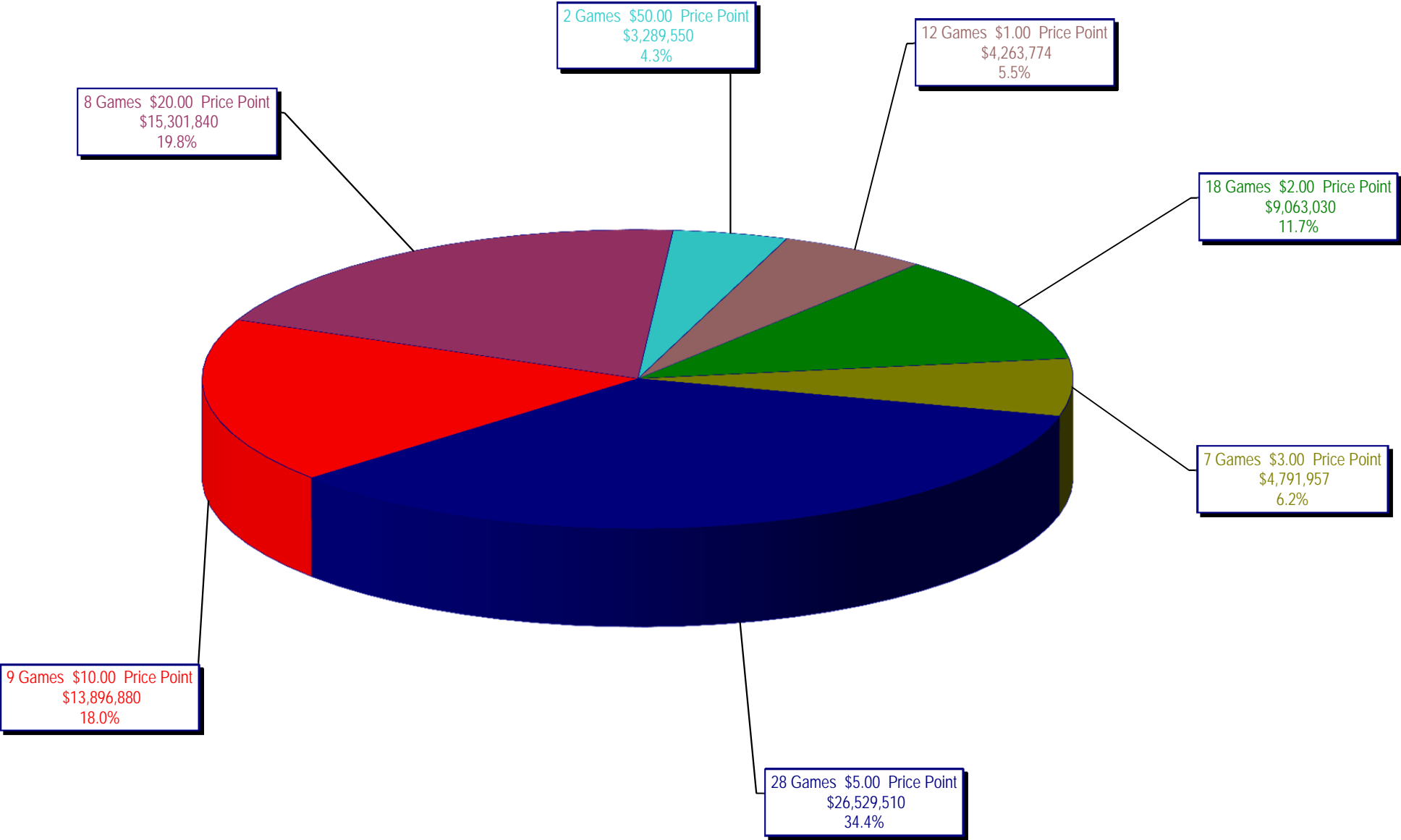
Draw Game Sales

		FY Sales Through Week Ending 1/9/2016		FY Prize Expense Through Week Ending 1/9/2016	Actual* Prize Payout	Base Payout (Prize Pool)
Lotto	\$	46,705,350	\$	29,300,550	62.73%	50.00%
Lotto Extra		7,886,720		4,045,710	51.30%	53.70%
Pick 3		90,705,502		44,648,780	49.22%	50.00%
Pick 3 Sum It Up		1,806,965		876,463	48.50%	50.00%
Cash Five		16,693,565		8,346,783	50.00%	50.00%
Texas Two Step		18,725,522		9,445,954	50.44%	50.00%
Mega Millions		48,660,568		24,839,995	51.05%	50.00%**
Megaplier		12,001,725		6,009,590	50.07%	N/A
Daily 4		31,378,498		15,677,000	49.96%	50.00%
Daily 4 Sum It Up		1,623,961		602,226	37.08%	50.00%
Powerball		175,861,917		87,975,238	50.03%	50.00%**
Power Play		18,828,040		9,412,725	49.99%	N/A
All or Nothing		11,191,576		5,726,604	51.17%	55.98%
Texas Triple Chance		9,969,847		6,329,351	63.48%	54.42%
Totals	\$	492,039,755	\$	253,236,968	51.47%	

* Before Unclaimed Prizes

** Estimated; depends on # of guaranteed prizes won in Texas

Texas Lottery Commission
Scratch Ticket Sales
For the week ending 1/09/16
(Unaudited)



Texas Lottery Commission
All Game Sales
For the week ending 1/09/16
(Unaudited)

