



WEEKLY SALES SUMMARY

Unaudited

Week Ending: 01/10/2009

Texas Lottery Commission
Fiscal Year to Date Sales Comparison
Unaudited

Through the week ending 01/10/2009 (19 weeks)

Sales by Game	FY 2007 *	FY 2008 **	FY 2009	\$ Change		% Change	
				FY 2009 to FY 2007	FY 2009 to FY 2008	FY 2009 to FY 2007	FY 2009 to FY 2008
Instant	\$ 1,034,085,484	\$ 1,021,658,425	\$ 980,700,646	\$ -53,384,838	\$ -40,957,779	-5.2%	-4.0%
Lotto Texas	75,943,967	77,755,353	65,653,172	-10,290,795	-12,102,181	-13.6%	-15.6%
Pick 3	114,478,600	102,845,764	100,726,618	-13,751,983	-2,119,146	-12.0%	-2.1%
Pick 3 Sum It Up	-	1,718,982	2,132,526	2,132,526	413,545	-	-
Cash 5	32,237,396	28,358,434	25,628,278	-6,609,118	-2,730,156	-20.5%	-9.6%
Texas Two Step	20,479,538	15,141,404	16,577,266	-3,902,272	1,435,862	-19.1%	9.5%
Mega Millions	54,220,758	53,211,357	62,054,615	7,833,857	8,843,258	14.4%	16.6%
Megaplier	13,202,617	13,251,634	14,712,323	1,509,706	1,460,689	11.4%	11.0%
Daily 4	-	14,865,500	15,287,673	15,287,673	422,173	-	2.8%
Daily 4 Sum It Up	-	3,872,311	1,957,363	1,957,363	-1,914,948	-	-49.5%
Total	\$ 1,344,648,360	\$ 1,332,679,163	\$ 1,285,430,479	\$ -59,217,882	\$ -47,248,684	-4.4%	-3.5%

* 3 extra days in 2007 ** 2 extra days in 2008

Texas Lottery Commission
Fiscal Year Over Year Change in Sales
Unaudited
FY 2009 Compared to FY 2008

Week	FY 2009 Week Ending	INSTANT TICKETS				ON-LINE GAMES				TOTAL SALES			
		FY 2009	FY 2008	Difference	% change - Cumulative Sales	FY 2009	FY 2008	Difference	% change - Cumulative Sales	FY 2009	FY 2008	Difference	% change - Cumulative Sales
1	9/6/2008**	\$44,890,104	\$62,376,229	(\$17,486,125)	-28.0%	\$14,722,011	\$19,372,224	(\$4,650,213)	-24.0%	\$59,612,115	\$81,748,453	(\$22,136,338)	-27.1%
2	9/13/2008	\$46,309,551	\$52,458,866	(\$6,149,315)	-20.6%	\$13,704,860	\$16,926,163	(\$3,221,303)	-21.7%	\$60,014,411	\$69,385,029	(\$9,370,618)	-20.8%
3	9/20/2008	\$42,923,171	\$49,998,934	(\$7,075,763)	-18.6%	\$12,291,263	\$15,792,283	(\$3,501,020)	-21.8%	\$55,214,434	\$65,791,217	(\$10,576,783)	-19.4%
4	9/27/2008	\$47,042,801	\$49,894,175	(\$2,851,374)	-15.6%	\$14,222,339	\$14,800,514	(\$578,175)	-17.9%	\$61,265,140	\$64,694,689	(\$3,429,549)	-16.2%
5	10/4/2008	\$50,747,162	\$53,486,863	(\$2,739,701)	-13.5%	\$15,784,472	\$16,618,430	(\$833,958)	-15.3%	\$66,531,634	\$70,105,293	(\$3,573,659)	-14.0%
6	10/11/2008	\$49,763,789	\$50,918,020	(\$1,154,231)	-11.7%	\$15,622,498	\$15,601,410	\$21,088	-12.9%	\$65,386,287	\$66,519,430	(\$1,133,143)	-12.0%
7	10/18/2008	\$49,299,053	\$50,532,253	(\$1,233,200)	-10.5%	\$15,167,940	\$15,682,666	(\$514,726)	-11.6%	\$64,466,993	\$66,214,919	(\$1,747,926)	-10.7%
8	10/25/2008	\$49,977,581	\$50,347,450	(\$369,869)	-9.3%	\$14,525,843	\$15,586,516	(\$1,060,673)	-11.0%	\$64,503,424	\$65,933,966	(\$1,430,542)	-9.7%
9	11/1/2008	\$50,346,542	\$53,953,733	(\$3,607,191)	-9.0%	\$14,838,845	\$16,775,983	(\$1,937,139)	-11.1%	\$65,185,387	\$70,729,716	(\$5,544,330)	-9.5%
10	11/8/2008	\$54,860,087	\$53,635,090	\$1,224,997	-7.9%	\$16,057,069	\$15,912,791	\$144,278	-9.9%	\$70,917,156	\$69,547,881	\$1,369,275	-8.3%
11	11/15/2008	\$53,484,812	\$51,254,401	\$2,230,411	-6.8%	\$15,829,819	\$15,797,076	\$32,744	-9.0%	\$69,314,631	\$67,051,477	\$2,263,155	-7.3%
12	11/22/2008	\$52,806,511	\$50,897,817	\$1,908,694	-5.9%	\$16,460,748	\$15,801,720	\$659,028	-7.9%	\$69,267,259	\$66,699,537	\$2,567,722	-6.4%
13	11/29/2008	\$52,199,741	\$53,913,115	(\$1,713,374)	-5.7%	\$17,397,576	\$17,055,505	\$342,072	-7.1%	\$69,597,317	\$70,968,620	(\$1,371,303)	-6.0%
14	12/6/2008	\$56,731,851	\$55,702,697	\$1,029,154	-5.1%	\$20,363,789	\$17,900,717	\$2,463,073	-5.5%	\$77,095,640	\$73,603,414	\$3,492,227	-5.2%
15	12/13/2008	\$54,109,617	\$53,703,516	\$406,101	-4.7%	\$22,952,228	\$17,820,841	\$5,131,387	-3.0%	\$77,061,845	\$71,524,357	\$5,537,488	-4.3%
16	12/20/2008	\$55,777,328	\$57,592,769	(\$1,815,441)	-4.6%	\$15,833,517	\$17,436,233	(\$1,602,716)	-3.4%	\$71,610,845	\$75,029,002	(\$3,418,157)	-4.3%
17	12/27/2008	\$57,597,885	\$57,696,003	(\$98,118)	-4.3%	\$15,851,771	\$14,743,680	\$1,108,091	-2.9%	\$73,449,656	\$72,439,683	\$1,009,973	-4.0%
18	1/3/2009	\$57,582,115	\$57,935,952	(\$353,837)	-4.1%	\$16,900,028	\$15,704,450	\$1,195,578	-2.3%	\$74,482,143	\$73,640,402	\$841,741	-3.7%
19	1/10/2009	\$54,250,945	\$55,360,542	(\$1,109,597)	-4.0%	\$16,203,220	\$15,691,540	\$511,680	-2.0%	\$70,454,165	\$71,052,082	(\$597,917)	-3.5%
20	1/17/2009		\$54,920,166				\$16,259,669				\$71,179,835		
21	1/24/2009		\$54,439,890				\$16,691,724				\$71,131,614		
22	1/31/2009		\$57,464,382				\$17,968,227				\$75,432,609		
23	2/7/2009		\$60,715,019				\$20,097,338				\$80,812,357		
24	2/14/2009		\$57,093,143				\$22,179,908				\$79,273,051		
25	2/21/2009		\$57,627,047				\$27,230,539				\$84,857,586		
26	2/28/2009		\$55,591,667				\$17,016,118				\$72,607,785		
27	3/7/2009		\$56,837,481				\$16,690,193				\$73,527,674		
28	3/14/2009		\$54,587,112				\$16,448,165				\$71,035,277		
29	3/21/2009		\$53,098,937				\$16,639,184				\$69,738,121		
30	3/28/2009		\$53,933,689				\$17,698,625				\$71,632,314		
31	4/4/2009		\$57,598,982				\$17,665,411				\$75,264,393		
32	4/11/2009		\$53,954,185				\$15,860,784				\$69,814,969		
33	4/18/2009		\$53,946,736				\$16,452,676				\$70,399,412		
34	4/25/2009		\$51,533,006				\$16,873,949				\$68,406,955		
35	5/2/2009		\$53,250,568				\$18,202,103				\$71,452,671		
36	5/9/2009		\$54,060,849				\$18,422,562				\$72,483,411		
37	5/16/2009		\$54,010,641				\$20,728,360				\$74,739,001		
38	5/23/2009		\$50,377,032				\$15,461,384				\$65,838,416		
39	5/30/2009		\$49,545,080				\$15,175,370				\$64,720,450		
40	6/6/2009		\$53,702,986				\$15,982,166				\$69,685,152		

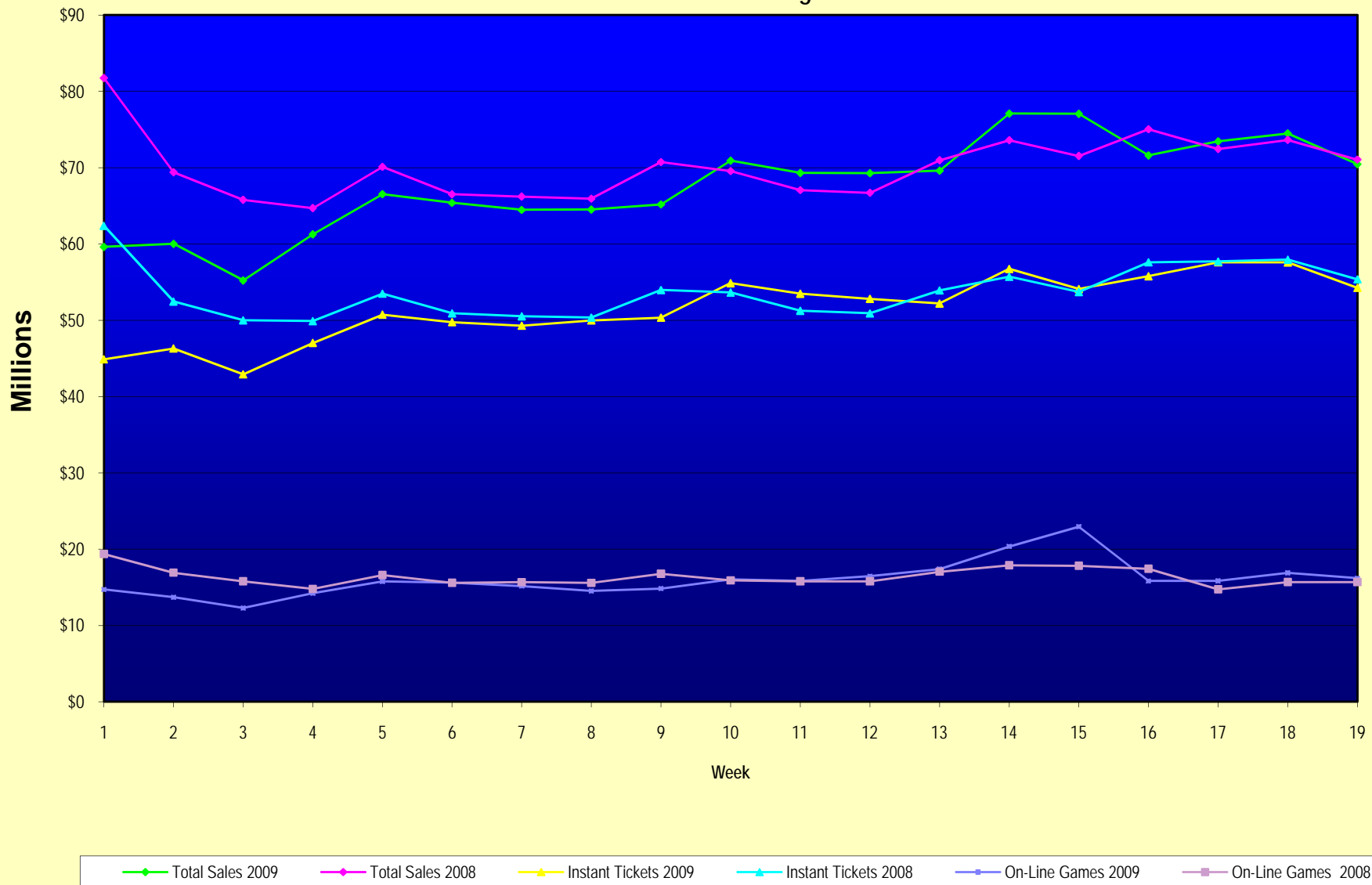
Note: Week 1 is not a full week of sales as this report is prepared on a Fiscal Year basis.

Texas Lottery Commission
Fiscal Year Over Year Change in Sales
Unaudited
FY 2009 Compared to FY 2008

Week	FY 2009 Week Ending	INSTANT TICKETS				ON-LINE GAMES				TOTAL SALES			
		FY 2009	FY 2008	Difference	% change - Cumulative Sales	FY 2009	FY 2008	Difference	% change - Cumulative Sales	FY 2009	FY 2008	Difference	% change - Cumulative Sales
41	6/13/2009		\$51,171,483				\$16,589,087				\$67,760,570		
42	6/20/2009		\$50,650,362				\$15,728,484				\$66,378,846		
43	6/27/2009		\$49,258,266				\$15,250,905				\$64,509,171		
44	7/4/2009		\$53,393,355				\$16,270,619				\$69,663,974		
45	7/11/2009		\$53,127,756				\$16,914,922				\$70,042,678		
46	7/18/2009		\$51,593,146				\$17,752,738				\$69,345,884		
47	7/25/2009		\$49,902,181				\$16,706,145				\$66,608,326		
48	8/1/2009		\$49,605,420				\$16,254,383				\$65,859,803		
49	8/8/2009		\$50,961,907				\$16,770,496				\$67,732,403		
50	8/15/2009		\$49,452,511				\$16,749,487				\$66,201,998		
51	8/22/2009		\$49,249,518				\$17,286,302				\$66,535,820		
52	8/29/2009		\$49,468,928				\$18,109,997				\$67,578,925		
53	9/5/2009		\$6,054,239				\$493,109				\$6,547,348		
Total thru Current Week		\$980,700,646	\$1,021,658,425	(\$40,957,779)	-4.0%	\$304,729,833	\$311,020,738	(\$6,290,905)	-2.0%	\$1,285,430,479	\$1,332,679,163	(\$47,248,684)	-3.5%
Fiscal Year Total		\$980,700,646	\$2,783,836,095			\$304,729,833	\$887,641,858			\$1,285,430,479	\$3,671,477,953		

** FY 2009 includes 6 days; FY 2008 includes 8 days
FY 2009 average daily sales are \$9,242,258. Two days at average daily sales are \$18,484,516.

Texas Lottery Commission Fiscal Year Over Year Change in Sales



Note: Week 1 is not a full week of sales as this report is prepared on a Fiscal Year basis.

Texas Lottery Commission
Instant Tickets by Price Point
Sales, Prize Expense, Sales Contribution and Payout Percentage With Year Over Year Changes
Unaudited

Fiscal Year	Price Point	# of Active Games	FY Sales	% of Instant Ticket Sales	Year over Year Change in Sales	FY Prize Expense	Year over Year Change in Prize Expense	FY Sales Contribution	Year over Year Change in Contribution	Average Prize Payout %	Year over Year Change in Payout %
2008	\$1.00	38	88,503,973	8.7%		53,175,798		35,328,175		60.1%	0.0%
thru	\$2.00	42	169,612,492	16.6%		110,270,768		59,341,724		65.0%	0.3%
1/12/2008	\$3.00	12	80,562,018	7.9%		53,024,696		27,537,322		65.8%	0.0%
	\$5.00	36	277,051,375	27.1%		187,937,915		89,113,460		67.8%	-0.2%
	\$7.00	10	69,700,806	6.8%		47,393,754		22,307,052		68.0%	0.0%
	\$10.00	17	157,817,586	15.4%		110,479,949		47,337,637		70.0%	-0.7%
	\$20.00	6	62,414,160	6.1%		44,875,126		17,539,034		71.9%	-0.1%
	\$25.00	2	37,796,525	3.7%		27,441,624		10,354,901		72.6%	0.3%
	\$30.00	3	14,547,990	1.4%		10,521,691		4,026,299		72.3%	0.1%
	\$50.00	2	63,651,500	6.2%		45,918,010		17,733,490		72.1%	0.0%
Total		168	\$1,021,658,425			\$691,039,331		\$330,619,094		67.6%	
2009	\$1.00	34	86,260,520	8.8%		51,917,881		34,342,639		60.2%	0.1%
thru	\$2.00	31	167,421,026	17.1%		108,560,736		58,860,290		64.8%	-0.7%
1/10/2009	\$3.00	13	105,817,620	10.8%		69,562,718		36,254,902		65.7%	0.0%
	\$5.00	33	300,722,429	30.7%		204,528,121		96,194,308		68.0%	0.1%
	\$7.00	6	42,882,861	4.4%		29,166,417		13,716,444		68.0%	0.0%
	\$10.00	14	133,772,370	13.6%		93,623,487		40,148,883		70.0%	0.0%
	\$20.00	7	92,575,360	9.4%		66,443,077		26,132,283		71.8%	0.0%
	\$25.00	1	2,375,100	0.2%		1,727,523		647,577		72.7%	0.2%
	\$30.00	3	8,699,610	0.9%		6,303,873		2,395,737		72.5%	0.1%
	\$50.00	3	40,173,750	4.1%		29,043,103		11,130,647		72.3%	0.2%
Total		145	\$980,700,646			\$660,876,937		\$319,823,709		67.4%	-0.2%
Variance	\$1.00	-4	-2,243,453		-2.5%	-1,257,917	-2.4%	-985,536	-2.8%	0.10%	
2009 to	\$2.00	-11	-2,191,466		-1.3%	-1,710,032	-1.6%	-481,434	-0.8%	-0.17%	
2008	\$3.00	1	25,255,602		31.3%	16,538,023	31.2%	8,717,579	31.7%	-0.08%	
	\$5.00	-3	23,671,054		8.5%	16,590,206	8.8%	7,080,848	7.9%	0.18%	
	\$7.00	-4	-26,817,945		-38.5%	-18,227,337	-38.5%	-8,590,608	-38.5%	0.02%	
	\$10.00	-3	-24,045,216		-15.2%	-16,856,462	-15.3%	-7,188,754	-15.2%	-0.02%	
	\$20.00	1	30,161,200		48.3%	21,567,951	48.1%	8,593,249	49.0%	-0.13%	
	\$25.00	-1	-35,421,425		-93.7%	-25,714,101	-93.7%	-9,707,324	-93.7%	0.13%	
	\$30.00	0	-5,848,380		-40.2%	-4,217,818	-40.1%	-1,630,562	-40.5%	0.14%	
	\$50.00	1	-23,477,750		-36.9%	-16,874,907	-36.8%	-6,602,843	-37.2%	0.15%	
Total		-23	-\$40,957,779		-4.0%	-\$30,162,394	-4.4%	-\$10,795,385	-3.3%	-0.23%	

Texas Lottery Commission
Instant Tickets by Price Point
 Sales, Prize Expense, Sales Contribution and Payout Percentage With Year Over Year Changes
 Unaudited

Notes - Instant Ticket Variances

		FY 2009		FY 2008		Difference
Sales	\$1 - \$7		\$703,104,456		\$685,430,664	\$17,673,792
Prize Exp.	\$1 - \$7		\$463,735,873		\$451,802,930	\$11,932,943
Sales Cont.	\$1 - \$7		\$239,368,583		\$233,627,734	\$5,740,849
Prize Exp. %	\$1 - \$7		66.0%		65.9%	0.0%
		FY 2009		FY 2008		Difference
Sales	\$10 - \$50		\$277,596,190		\$336,227,761	-\$58,631,571
Prize Exp.	\$10 - \$50		\$197,141,064		\$239,236,401	-\$42,095,337
Sales Cont.	\$10 - \$50		\$80,455,126		\$96,991,360	-\$16,536,234
Prize Exp. %	\$10 - \$50		71.0%		71.2%	-0.1%
		FY 2009		FY 2008		Difference
Sales	Instant		\$980,700,646		\$1,021,658,425	-\$40,957,779
Prize Exp.	Instant		\$660,876,937		\$691,039,331	-\$30,162,394
Sales Cont.	Instant		\$319,823,709		\$330,619,094	-\$10,795,385
Prize Exp. %	Instant		67.4%		67.6%	-0.3%

		FY 2009		FY 2008		Difference
Sales	\$1 - \$10		\$836,876,826		\$843,248,250	-\$6,371,424
Prize Exp.	\$1 - \$10		\$557,359,360		\$562,282,879	-\$4,923,519
Sales Cont.	\$1 - \$10		\$279,517,466		\$280,965,371	-\$1,447,905
Prize Exp. %	\$1 - \$10		66.6%		66.7%	-0.1%
		FY 2009		FY 2008		Difference
Sales	\$20 - \$50		\$143,823,820		\$178,410,175	-\$34,586,355
Prize Exp.	\$20 - \$50		\$103,517,577		\$128,756,451	-\$25,238,874
Sales Cont.	\$20 - \$50		\$40,306,243		\$49,653,724	-\$9,347,481
Prize Exp. %	\$20 - \$50		72.0%		72.2%	-0.2%
		FY 2009		FY 2008		Difference
Sales	Instant		\$980,700,646		\$1,021,658,425	-\$40,957,779
Prize Exp.	Instant		\$660,876,937		\$691,039,331	-\$30,162,394
Sales Cont.	Instant		\$319,823,709		\$330,619,094	-\$10,795,385
Prize Exp. %	Instant		67.4%		67.6%	-0.3%

Texas Lottery Commission
Weekly Sales Summary
& Comparison to Previous Week
 Unaudited

	Week Ending 01/10/2009	% of Sales	Week Ending 01/03/2009	% of Sales	\$ change	% change
	<u>THIS WEEK</u>		<u>LAST WEEK</u>			
Total Sales	<u>\$70,454,165</u>		<u>\$74,482,143</u>		<u>-\$4,027,978</u>	-5.41%
Instant Tickets	<u>\$54,250,945</u>	77.0%	<u>\$57,582,115</u>	77.3%	<u>-\$3,331,170</u>	-5.79%
Lotto Texas	\$3,582,400	5.1%	\$3,784,763	5.1%	-\$202,363	-5.35%
Pick 3	\$5,476,890	7.8%	\$5,690,221	7.6%	-\$213,331	-3.75%
Pick 3 Sum It Up	\$116,675	0.2%	\$120,520	0.2%	-\$3,845	-3.19%
Cash 5	\$1,403,531	2.0%	\$1,406,807	1.9%	-\$3,276	-0.23%
Texas Two Step	\$1,267,847	1.8%	\$934,000	1.3%	\$333,847	35.74%
Mega Millions	\$2,701,275	3.8%	\$3,190,457	4.3%	-\$489,182	-15.33%
Megaplier	\$681,574	1.0%	\$780,850	1.0%	-\$99,276	-12.71%
Daily 4	\$868,919	1.2%	\$885,674	1.2%	-\$16,755	-1.89%
Daily 4 Sum It Up	\$104,110	0.1%	\$106,737	0.1%	-\$2,627	-2.46%
Total Online Sales	<u>\$16,203,220</u>		<u>\$16,900,028</u>		<u>-\$696,808</u>	-4.12%

* Totals may not sum due to rounding.

Texas Lottery Commission
Weekly Sales Summary
Unaudited

INSTANT TICKETS
TOP TEN SELLING GAMES

For the Week Ending : 01/10/2009

Rank	Price Point	Game	Sales (Millions)
1	\$ 5	HOT HAND	\$ 2.992
2	\$ 5	GIANT JUMBO BUCKS II	\$ 2.750
3	\$ 10	MEGA JUMBO BUCKS II	\$ 2.603
4	\$ 3	BONUS CASHWORD	\$ 2.327
5	\$ 5	FANTASTIC 5'S	\$ 2.236
6	\$ 20	TEXAS \$50 MILLION CLUB	\$ 2.129
7	\$ 7	SIZZLIN' RED 7'S	\$ 2.059
8	\$ 10	SET FOR LIFE	\$ 1.931
9	\$ 2	BREAK THE BANK	\$ 1.789
10	\$ 50	\$130,000,000 PLATINUM PAYOUT	\$ 1.545

Texas Lottery Commission
Prize Payout Tracking Report
Unaudited

Through Week Ending 01/10/2009

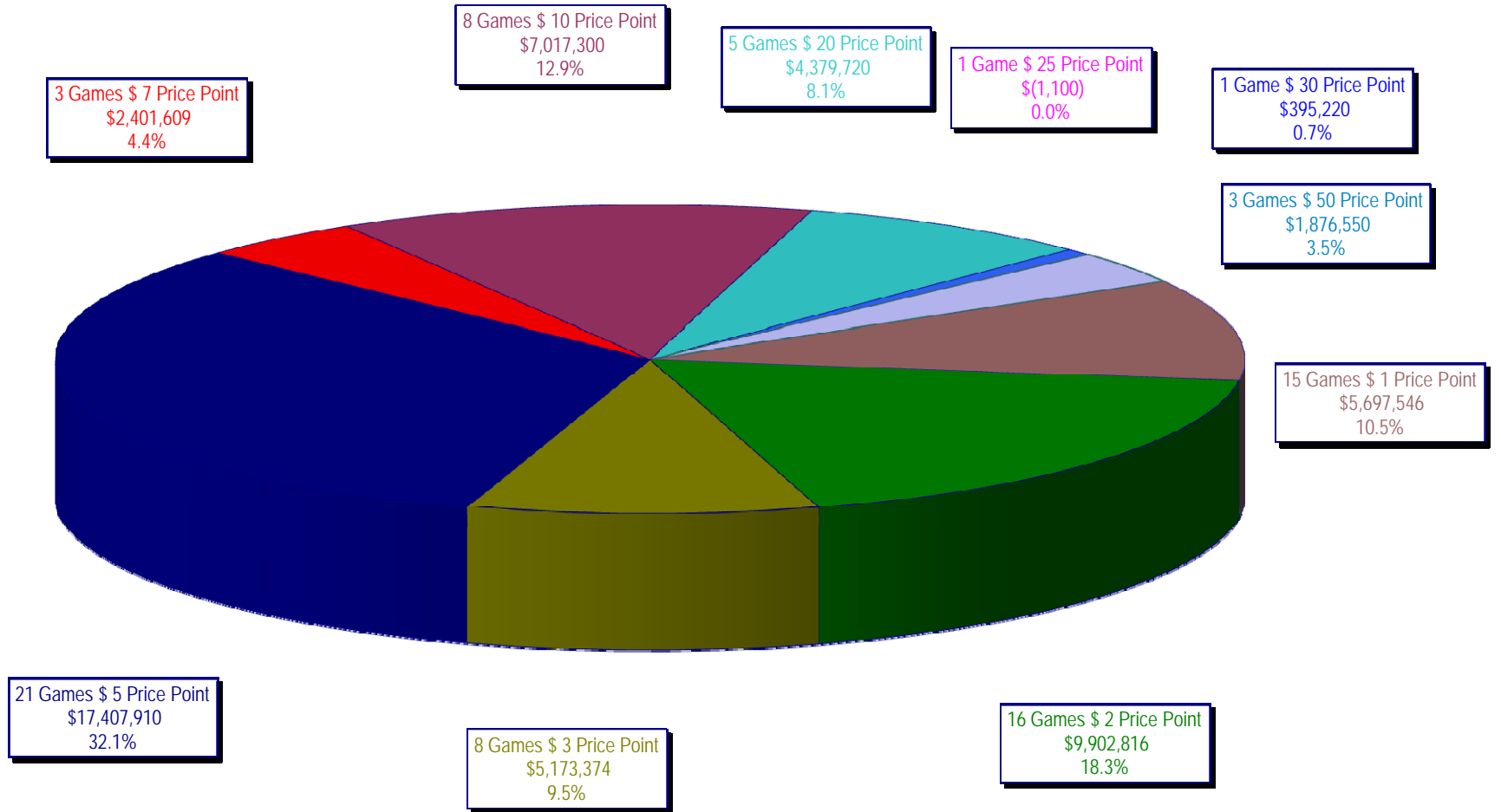
On-Line Sales

		FY Sales Through Week Ending 1/10/2009		FY Prize Expense Through Week Ending 1/10/2009	Actual* Prize Payout	Base Payout (Prize Pool)
Lotto	\$	65,653,172	\$	32,923,397	50.15%	50.00%
Pick 3		100,726,618		48,361,530	48.01%	50.00%
Pick 3 Sum It Up		2,132,526		966,234	45.31%	50.00%
Cash 5		25,628,278		12,913,921	50.39%	50.00%
Texas Two-Step		16,577,266		9,084,241	54.80%	50.00%
Mega Millions		62,054,615		29,869,436	48.13%	50.00%**
Megaplier		14,712,323		5,441,765	36.99%	N/A
Daily 4		15,287,673		6,701,750	43.84%	50.00%
Daily 4-Sum It Up		1,957,363		735,769	37.59%	50.00%
Totals	\$	304,729,833	\$	146,998,043	48.24%	

* Before Unclaimed Prizes

** Estimated; depends on # of guaranteed prizes won in Texas

Texas Lottery Commission
 Instant Ticket Sales
 For the Week Ending 01/10/2009
 (Unaudited)



Texas Lottery Commission
All Game Sales
For the Week Ending 01/10/2009
(Unaudited)

