



WEEKLY SALES SUMMARY

Unaudited

[Week Ending: 01/12/2013](#)

Texas Lottery Commission
Fiscal Year to Date Sales Comparison
Unaudited

Through the week ending 01/12/2013 (20 weeks)

Sales by Game	FY 2011 *	FY 2012 **	FY 2013	\$ Change		% Change	
				FY 2013 to FY 2011	FY 2013 to FY 2012	FY 2013 to FY 2011	FY 2013 to FY 2012
Instants	\$ 1,040,360,021	\$ 1,070,907,964	\$ 1,120,913,385	\$ 80,553,364	\$ 50,005,421	7.7%	4.7%
Lotto Texas	64,048,724	65,397,632	58,457,261	-5,591,463	-6,940,371	-8.7%	-10.6%
Pick 3	101,686,947	98,772,300	97,577,944	-4,109,003	-1,194,356	-4.0%	-1.2%
Pick 3 Sum It Up	2,064,628	2,010,616	1,829,938	-234,690	-180,679	-11.4%	-9.0%
Cash Five	24,134,296	24,095,411	20,901,557	-3,232,739	-3,193,854	-13.4%	-13.3%
Texas Two Step	18,036,010	22,686,317	21,744,221	3,708,211	-942,096	20.6%	-4.2%
Mega Millions	76,088,925	58,205,559	38,785,352	-37,303,573	-19,420,207	-49.0%	-33.4%
Megaplier	14,777,798	12,825,041	9,037,981	-5,739,817	-3,787,060	-38.8%	-29.5%
Daily 4	21,076,352	23,335,143	25,705,800	4,629,448	2,370,657	22.0%	10.2%
Daily 4 Sum It Up	1,659,893	1,725,574	1,705,567	45,674	-20,008	2.8%	-1.2%
Powerball	31,274,385	45,688,892	108,409,077	77,134,692	62,720,185	246.6%	137.3%
Power Play	7,570,769	10,076,884	10,750,523	3,179,754	673,639	42.0%	6.7%
All or Nothing	-	-	34,034,756	34,034,756	34,034,756	-	-
Total	\$ <u>1,402,778,747</u>	\$ <u>1,435,727,333</u>	\$ <u>1,549,853,361</u>	\$ <u>147,074,614</u>	\$ <u>114,126,028</u>	10.5%	7.9%

* 3 extra days

** 2 extra days

Texas Lottery Commission
Fiscal Year to Date Cumulative Average Sales Comparison
Unaudited

Through the week ending 01/12/2013 (20 weeks)

Sales by Game	FY 2011	FY 2012	FY 2013
Instant	\$ 7,593,869	\$ 7,874,323	\$ 8,365,025
Lotto Texas	467,509	480,865	436,248
Pick 3	742,240	726,267	728,194
Pick 3 Sum It Up	15,070	14,784	13,656
Cash Five	176,163	177,172	155,982
Texas Two Step	131,650	166,811	162,270
Mega Millions	555,394	427,982	289,443
Megaplier	107,867	94,302	67,448
Daily 4	153,842	171,582	191,834
Daily 4 Sum It Up	12,116	12,688	12,728
Powerball	228,280	335,948	809,023
Power Play	55,261	74,095	80,228
All or Nothing	-	-	270,117 *
Total	\$ <u>10,239,261</u>	\$ <u>10,556,819</u>	\$ <u>11,582,196</u>
	thru 01/15/2011 137 days	thru 01/14/2012 136 days	thru 01/12/2013 134 days * 126 days

Texas Lottery Commission
Fiscal Year Over Year Change in Sales
Unaudited
FY 2013 Compared to FY 2012

Week	FY 2013 Week Ending	INSTANT TICKETS				DRAW GAMES				TOTAL SALES			
		FY 2013	FY 2012	Difference	% change - Cumulative Sales	FY 2013	FY 2012	Difference	% change - Cumulative Sales	FY 2013	FY 2012	Difference	% change - Cumulative Sales
1	9/1/2012**	\$9,611,328	\$25,147,181	(\$15,535,853)	-61.8%	\$3,712,535	\$9,704,561	(\$5,992,026)	-61.7%	\$13,323,863	\$34,851,742	(\$21,527,879)	-61.8%
2	9/8/2012	\$56,941,761	\$50,591,068	\$6,350,693	12.6%	\$19,305,417	\$17,681,853	\$1,623,564	9.2%	\$76,247,178	\$68,272,921	\$7,974,257	11.7%
3	9/15/2012	\$56,302,875	\$49,835,063	\$6,467,812	13.0%	\$20,857,230	\$16,842,326	\$4,014,904	23.8%	\$77,160,105	\$66,677,389	\$10,482,716	15.7%
4	9/22/2012	\$54,974,438	\$49,777,138	\$5,197,300	10.4%	\$20,570,277	\$17,504,800	\$3,065,477	17.5%	\$75,544,715	\$67,281,938	\$8,262,777	12.3%
5	9/29/2012	\$54,606,674	\$51,040,274	\$3,566,400	7.0%	\$20,462,690	\$18,653,100	\$1,809,591	9.7%	\$75,069,364	\$69,693,374	\$5,375,991	7.7%
6	10/6/2012	\$59,223,327	\$53,715,157	\$5,508,170	10.3%	\$19,279,973	\$17,225,680	\$2,054,293	11.9%	\$78,503,300	\$70,940,837	\$7,562,463	10.7%
7	10/13/2012	\$57,075,606	\$51,942,121	\$5,133,485	9.9%	\$18,638,467	\$17,854,980	\$783,487	4.4%	\$75,714,073	\$69,797,101	\$5,916,972	8.5%
8	10/20/2012	\$56,630,134	\$52,837,769	\$3,792,365	7.2%	\$18,998,943	\$19,558,519	(\$559,577)	-2.9%	\$75,629,077	\$72,396,288	\$3,232,789	4.5%
9	10/27/2012	\$55,789,743	\$52,206,644	\$3,583,099	6.9%	\$20,130,190	\$21,504,565	(\$1,374,376)	-6.4%	\$75,919,933	\$73,711,209	\$2,208,724	3.0%
10	11/3/2012	\$58,142,777	\$56,265,310	\$1,877,467	3.3%	\$20,638,008	\$20,870,086	(\$232,079)	-1.1%	\$78,780,785	\$77,135,396	\$1,645,389	2.1%
11	11/10/2012	\$57,484,804	\$55,682,645	\$1,802,159	3.2%	\$20,862,872	\$17,862,404	\$3,000,468	16.8%	\$78,347,676	\$73,545,049	\$4,802,627	6.5%
12	11/17/2012	\$55,805,228	\$54,978,079	\$827,149	1.5%	\$21,660,705	\$17,879,985	\$3,780,721	21.1%	\$77,465,933	\$72,858,064	\$4,607,870	6.3%
13	11/24/2012	\$61,331,977	\$53,942,448	\$7,389,529	13.7%	\$27,172,853	\$16,877,145	\$10,295,708	61.0%	\$88,504,830	\$70,819,593	\$17,685,237	25.0%
14	12/1/2012	\$58,420,598	\$57,153,469	\$1,267,129	2.2%	\$62,797,943	\$18,298,636	\$44,499,307	243.2%	\$121,218,541	\$75,452,105	\$45,766,436	60.7%
15	12/8/2012	\$62,489,745	\$55,318,284	\$7,171,461	13.0%	\$19,630,155	\$19,033,326	\$596,829	3.1%	\$82,119,900	\$74,351,610	\$7,768,290	10.4%
16	12/15/2012	\$59,661,880	\$58,612,629	\$1,049,251	1.8%	\$20,064,982	\$20,045,279	\$19,704	0.1%	\$79,726,862	\$78,657,908	\$1,068,955	1.4%
17	12/22/2012	\$63,556,886	\$60,628,256	\$2,928,630	4.8%	\$19,084,653	\$22,572,986	(\$3,488,333)	-15.5%	\$82,641,539	\$83,201,242	(\$559,703)	-0.7%
18	12/29/2012	\$63,547,886	\$63,065,007	\$482,879	0.8%	\$17,359,874	\$19,948,521	(\$2,588,647)	-13.0%	\$80,907,760	\$83,013,528	(\$2,105,768)	-2.5%
19	1/5/2013	\$60,452,721	\$60,479,896	(\$27,175)	0.0%	\$18,833,047	\$17,331,888	\$1,501,159	8.7%	\$79,285,768	\$77,811,784	\$1,473,984	1.9%
20	1/12/2013	\$58,862,997	\$57,689,526	\$1,173,471	2.0%	\$18,879,167	\$17,568,732	\$1,310,435	7.5%	\$77,742,164	\$75,258,258	\$2,483,906	3.3%
21	1/19/2013		\$58,704,854				\$19,886,540				\$78,591,394		
22	1/26/2013		\$57,611,325				\$20,641,697				\$78,253,022		
23	2/2/2013		\$65,553,366				\$23,689,855				\$89,243,221		
24	2/9/2013		\$75,070,485				\$28,361,583				\$103,432,068		
25	2/16/2013		\$66,679,947				\$19,588,615				\$86,268,562		
26	2/23/2013		\$64,868,899				\$19,965,388				\$84,834,287		
27	3/2/2013		\$67,135,065				\$20,947,181				\$88,082,246		
28	3/9/2013		\$68,299,006				\$22,152,639				\$90,451,645		
29	3/16/2013		\$65,013,692				\$23,351,718				\$88,365,410		
30	3/23/2013		\$64,035,255				\$27,416,609				\$91,451,864		
31	3/30/2013		\$65,135,991				\$84,628,987				\$149,764,978		
32	4/6/2013		\$66,860,957				\$19,899,400				\$86,760,357		
33	4/13/2013		\$64,028,898				\$20,220,141				\$84,249,039		
34	4/20/2013		\$63,623,892				\$20,974,282				\$84,598,174		
35	4/27/2013		\$61,743,623				\$20,267,388				\$82,011,011		
36	5/4/2013		\$64,851,962				\$20,642,982				\$85,494,944		
37	5/11/2013		\$65,472,556				\$19,140,768				\$84,613,324		
38	5/18/2013		\$60,572,658				\$18,342,814				\$78,915,472		
39	5/25/2013		\$58,959,028				\$18,618,060				\$77,577,088		
40	6/1/2013		\$57,409,086				\$19,014,645				\$76,423,731		
41	6/8/2013		\$59,845,545				\$20,527,958				\$80,373,503		
42	6/15/2013		\$57,021,498				\$19,386,186				\$76,407,684		

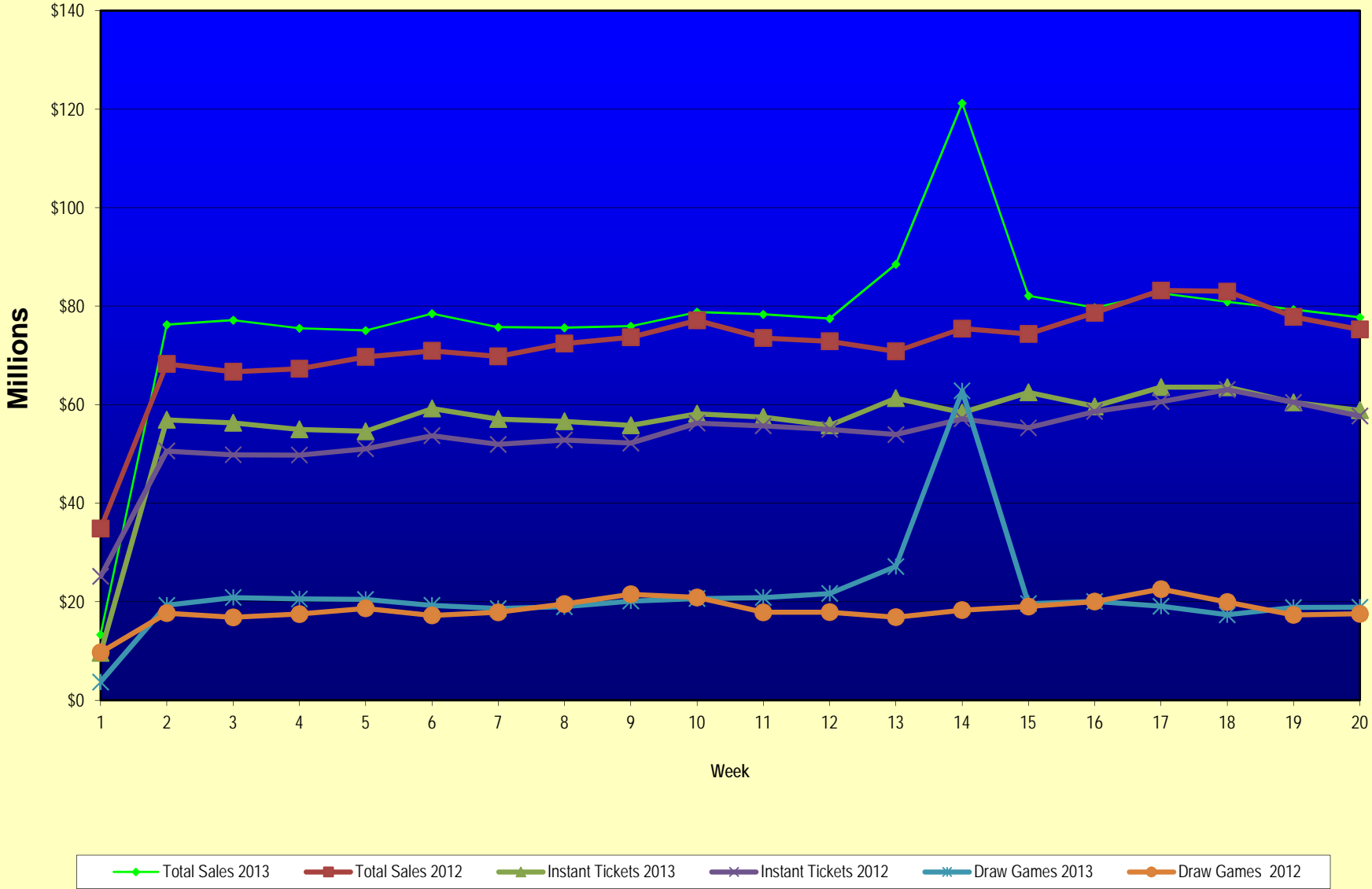
Note: Week 1 is not a full week of sales as this report is prepared on a Fiscal Year basis.

Texas Lottery Commission
Fiscal Year Over Year Change in Sales
Unaudited
FY 2013 Compared to FY 2012

Week	FY 2013 Week Ending	INSTANT TICKETS				DRAW GAMES				TOTAL SALES			
		FY 2013	FY 2012	Difference	% change - Cumulative Sales	FY 2013	FY 2012	Difference	% change - Cumulative Sales	FY 2013	FY 2012	Difference	% change - Cumulative Sales
43	6/22/2013		\$57,892,076				\$17,594,154				\$75,486,230		
44	6/29/2013		\$57,497,435				\$18,153,658				\$75,651,093		
45	7/6/2013		\$60,345,000				\$19,059,152				\$79,404,152		
46	7/13/2013		\$57,683,321				\$18,751,043				\$76,434,364		
47	7/20/2013		\$57,083,343				\$18,769,201				\$75,852,544		
48	7/27/2013		\$54,006,781				\$18,934,103				\$72,940,884		
49	8/3/2013		\$56,557,409				\$20,206,705				\$76,764,114		
50	8/10/2013		\$57,799,452				\$22,832,120				\$80,631,572		
51	8/17/2013		\$54,845,724				\$25,435,624				\$80,281,348		
52	8/24/2013		\$55,661,277				\$17,524,474				\$73,185,751		
	8/31/2013		\$47,363,984				\$14,929,528				\$62,293,512		
Total thru Current Week		\$1,120,913,385	\$1,070,907,964	\$50,005,421	4.7%	\$428,939,976	\$364,819,369	\$64,120,607	17.6%	\$1,549,853,361	\$1,435,727,333	\$114,126,028	7.9%
Fiscal Year Total		\$1,120,913,385	\$3,086,141,354			\$428,939,976	\$1,104,674,559			\$1,549,853,361	\$4,190,815,913		

** FY 2012 includes 3 days; FY 2013 includes 1 day.

Texas Lottery Commission Fiscal Year Over Year Change in Sales



Note: Week 1 is not a full week of sales as this report is prepared on a Fiscal Year basis.

Texas Lottery Commission
Instant Tickets by Price Point
Sales, Prize Expense, Sales Contribution and Payout Percentage With Year Over Year Changes
Unaudited

Fiscal Year	Price Point	# of Active Games	FY Sales	% of Instant Ticket Sales	Year over Year Change in Sales	FY Prize Expense	Year over Year Change in Prize Expense	FY Sales Contribution	Year over Year Change in Contribution	Average Prize Payout %	Year over Year Change in Payout %
2012	\$1.00	26	81,414,289	7.6%		50,001,478		31,412,811		61.4%	1.1%
thru	\$2.00	27	147,859,514	13.8%		96,130,226		51,729,288		65.0%	-0.8%
1/14/2012	\$3.00	15	131,834,763	12.3%		86,470,801		45,363,962		65.6%	0.0%
	\$5.00	35	339,162,115	31.7%		230,869,800		108,292,315		68.1%	0.2%
	\$7.00	4	18,180,463	1.7%		12,362,596		5,817,867		68.0%	0.0%
	\$10.00	15	169,450,850	15.8%		119,314,645		50,136,205		70.4%	-0.8%
	\$20.00	5	148,935,520	13.9%		111,100,597		37,834,923		74.6%	-0.1%
	\$50.00	2	34,070,450	3.2%		26,462,105		7,608,345		77.7%	0.1%
Total		129	\$1,070,907,964			\$732,712,248		\$338,195,716		68.4%	-0.1%
2013	\$1.00	26	68,613,231	6.1%		42,221,560		26,391,671		61.5%	1.5%
thru	\$2.00	29	144,982,508	12.9%		94,253,434		50,729,074		65.0%	-0.1%
1/12/2013	\$3.00	14	141,643,095	12.6%		92,890,682		48,752,413		65.6%	0.1%
	\$5.00	43	345,013,460	30.8%		234,311,545		110,701,915		67.9%	-0.1%
	\$7.00	2	15,411,781	1.4%		10,474,867		4,936,914		68.0%	0.0%
	\$10.00	12	191,875,410	17.1%		135,534,668		56,340,742		70.6%	-0.4%
	\$20.00	7	161,119,400	14.4%		120,614,074		40,505,326		74.9%	0.1%
	\$50.00	3	52,254,500	4.7%		40,570,277		11,684,223		77.6%	0.0%
Total		136	\$1,120,913,385			\$770,871,107		\$350,042,278		68.8%	0.2%
Variance	\$1.00	0	-12,801,058		-15.7%	-7,779,918	-15.6%	-5,021,140	-16.0%	0.12%	
2013 to	\$2.00	2	-2,877,006		-1.9%	-1,876,792	-2.0%	-1,000,214	-1.9%	0.00%	
2012	\$3.00	-1	9,808,332		7.4%	6,419,881	7.4%	3,388,451	7.5%	-0.01%	
	\$5.00	8	5,851,345		1.7%	3,441,745	1.5%	2,409,600	2.2%	-0.16%	
	\$7.00	-2	-2,768,682		-15.2%	-1,887,729	-15.3%	-880,953	-15.1%	-0.03%	
	\$10.00	-3	22,424,560		13.2%	16,220,023	13.6%	6,204,537	12.4%	0.22%	
	\$20.00	2	12,183,880		8.2%	9,513,477	8.6%	2,670,403	7.1%	0.26%	
	\$50.00	1	18,184,050		53.4%	14,108,172	53.3%	4,075,878	53.6%	-0.03%	
Total		7	\$50,005,421		4.7%	\$38,158,859	5.2%	\$11,846,562	3.5%	0.35%	

Notes - Instant Ticket Variances

Texas Lottery Commission
Instant Tickets by Price Point
Sales, Prize Expense, Sales Contribution and Payout Percentage With Year Over Year Changes
 Unaudited

			FY 2013		FY 2012	Difference
Sales	\$1 - \$7	1	\$715,664,075		\$718,451,144	-\$2,787,069
Prize Exp.	\$1 - \$7	1	\$474,152,088		\$475,834,901	-\$1,682,813
Sales Cont.	\$1 - \$7	1	\$241,511,987		\$242,616,243	-\$1,104,256
Prize Exp. %	\$1 - \$7	1	66.3%		66.2%	0.0%
			FY 2013		FY 2012	Difference
Sales	\$10 - \$50	2	\$405,249,310		\$352,456,820	\$52,792,490
Prize Exp.	\$10 - \$50	2	\$296,719,019		\$256,877,347	\$39,841,672
Sales Cont.	\$10 - \$50	1	\$108,530,291		\$95,579,473	\$12,950,818
Prize Exp. %	\$10 - \$50	2	73.2%		72.9%	0.3%
			FY 2013		FY 2012	Difference
Sales	Instant		\$1,120,913,385		\$1,070,907,964	\$50,005,421
Prize Exp.	Instant		\$770,871,107		\$732,712,248	\$38,158,859
Sales Cont.	Instant		\$350,042,278		\$338,195,716	\$11,846,562
Prize Exp. %	Instant		68.8%		68.4%	0.4%

			FY 2013		FY 2012	Difference
Sales	\$1 - \$10		\$907,539,485		\$887,901,994	\$19,637,491
Prize Exp.	\$1 - \$10		\$609,686,756		\$595,149,546	\$14,537,210
Sales Cont.	\$1 - \$10		\$297,852,729		\$292,752,448	\$5,100,281
Prize Exp. %	\$1 - \$10		67.2%		67.0%	0.2%
			FY 2013		FY 2012	Difference
Sales	\$20 - \$50		\$213,373,900		\$183,005,970	\$30,367,930
Prize Exp.	\$20 - \$50		\$161,184,351		\$137,562,702	\$23,621,649
Sales Cont.	\$20 - \$50		\$52,189,549		\$45,443,268	\$6,746,281
Prize Exp. %	\$20 - \$50		75.5%		75.2%	0.4%
			FY 2013		FY 2012	Difference
Sales	Instant		\$1,120,913,385		\$1,070,907,964	\$50,005,421
Prize Exp.	Instant		\$770,871,107		\$732,712,248	\$38,158,859
Sales Cont.	Instant		\$350,042,278		\$338,195,716	\$11,846,562
Prize Exp. %	Instant		68.8%		68.4%	0.4%

Texas Lottery Commission
Weekly Sales Summary
& Comparison to Previous Week
 Unaudited

	Week Ending 01/12/2013	% of Sales	Week Ending 01/05/2013	% of Sales	\$ change	% change
	<u>THIS WEEK</u>		<u>LAST WEEK</u>			
Total Sales	<u>\$77,742,164</u>		<u>\$79,285,768</u>		<u>-\$1,543,604</u>	-1.95%
Instant Tickets	<u>\$58,862,997</u>	75.7%	<u>\$60,452,721</u>	76.2%	<u>-\$1,589,724</u>	-2.63%
Lotto	\$2,588,023	3.3%	\$2,962,822	3.7%	-\$374,799	-12.65%
Pick 3	\$4,974,232	6.4%	\$5,157,831	6.5%	-\$183,599	-3.56%
Pick 3 Sum It Up	\$92,872	0.1%	\$97,210	0.1%	-\$4,338	-4.46%
Cash Five	\$1,079,444	1.4%	\$1,098,429	1.4%	-\$18,985	-1.73%
Texas Two Step	\$1,622,926	2.1%	\$1,363,512	1.7%	\$259,414	19.03%
Mega Millions	\$2,036,427	2.6%	\$1,865,613	2.4%	\$170,814	9.16%
Megaplier	\$471,998	0.6%	\$443,570	0.6%	\$28,428	6.41%
Daily 4	\$1,345,510	1.7%	\$1,396,145	1.8%	-\$50,635	-3.63%
Daily 4 Sum It Up	\$81,625	0.1%	\$87,787	0.1%	-\$6,162	-7.02%
Powerball	\$2,755,940	3.5%	\$2,524,666	3.2%	\$231,274	9.16%
Power Play	\$349,383	0.4%	\$339,142	0.4%	\$10,241	3.02%
All or Nothing	\$1,480,788	1.9%	\$1,496,322	1.9%	-\$15,534	-1.04%
Total Draw Game Sales	<u>\$18,879,167</u>		<u>\$18,833,047</u>		<u>\$46,120</u>	0.24%

* Totals may not sum due to rounding.

Texas Lottery Commission
Weekly Sales Summary
Unaudited

INSTANT TICKETS
TOP TEN SELLING GAMES

For the Week Ending: 01/12/13

Rank	Price Point	Game	Sales (Millions)
1	\$ 5	\$100,000 WINNINGS	\$ 3.811
2	\$ 10	10X MEGA MONEY	\$ 3.215
3	\$ 5	GOLDEN SPADES	\$ 2.329
4	\$ 3	LOTERIA TEXAS	\$ 2.296
5	\$ 20	\$500 MILLION EXTREME CASH BLAST	\$ 2.289
6	\$ 50	\$7,500,000 FORTUNE	\$ 2.050
7	\$ 3	BONUS CASHWORD	\$ 2.047
8	\$ 10	\$200 MILLION CASH SPECTACULAR	\$ 1.890
9	\$ 5	\$100,000 CASH	\$ 1.801
10	\$ 20	\$500,000,000 FRENZY	\$ 1.697

Texas Lottery Commission
Prize Payout Tracking Report
Unaudited

Through Week Ending 01/12/13

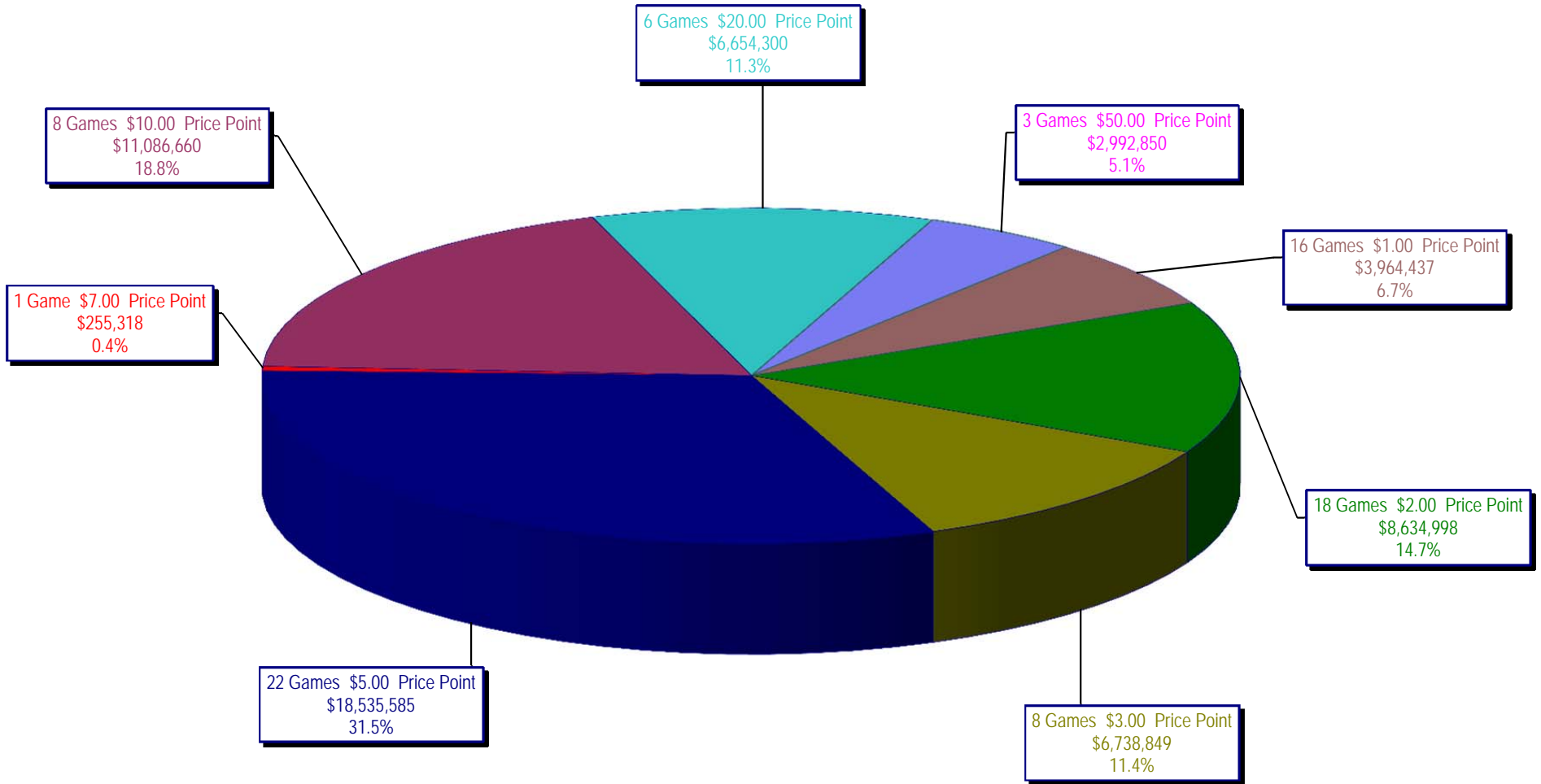
Draw Game Sales

		FY Sales Through Week Ending 1/12/2013		FY Prize Expense Through Week Ending 1/12/2013	Actual* Prize Payout	Base Payout (Prize Pool)
Lotto	\$	58,457,261	\$	40,970,821	70.09%	50.00%
Pick 3		97,577,944		51,847,690	53.13%	50.00%
Pick 3 Sum It Up		1,829,938		950,921	51.96%	50.00%
Cash Five		20,901,557		10,452,464	50.01%	50.00%
Texas Two Step		21,744,221		10,949,915	50.36%	50.00%
Mega Millions		38,785,352		18,920,499	48.78%	50.00%**
Megaplier		9,037,981		4,504,861	49.84%	N/A
Daily 4		25,705,800		11,820,525	45.98%	50.00%
Daily 4 Sum It Up		1,705,567		638,545	37.44%	50.00%
Powerball		108,409,077		57,887,787	53.40%	50.00%**
Power Play		10,750,523		6,331,734	58.90%	N/A
All or Nothing		34,034,756		20,022,568	58.83%	50.00%
Totals	\$	428,939,976	\$	235,298,330	54.86%	

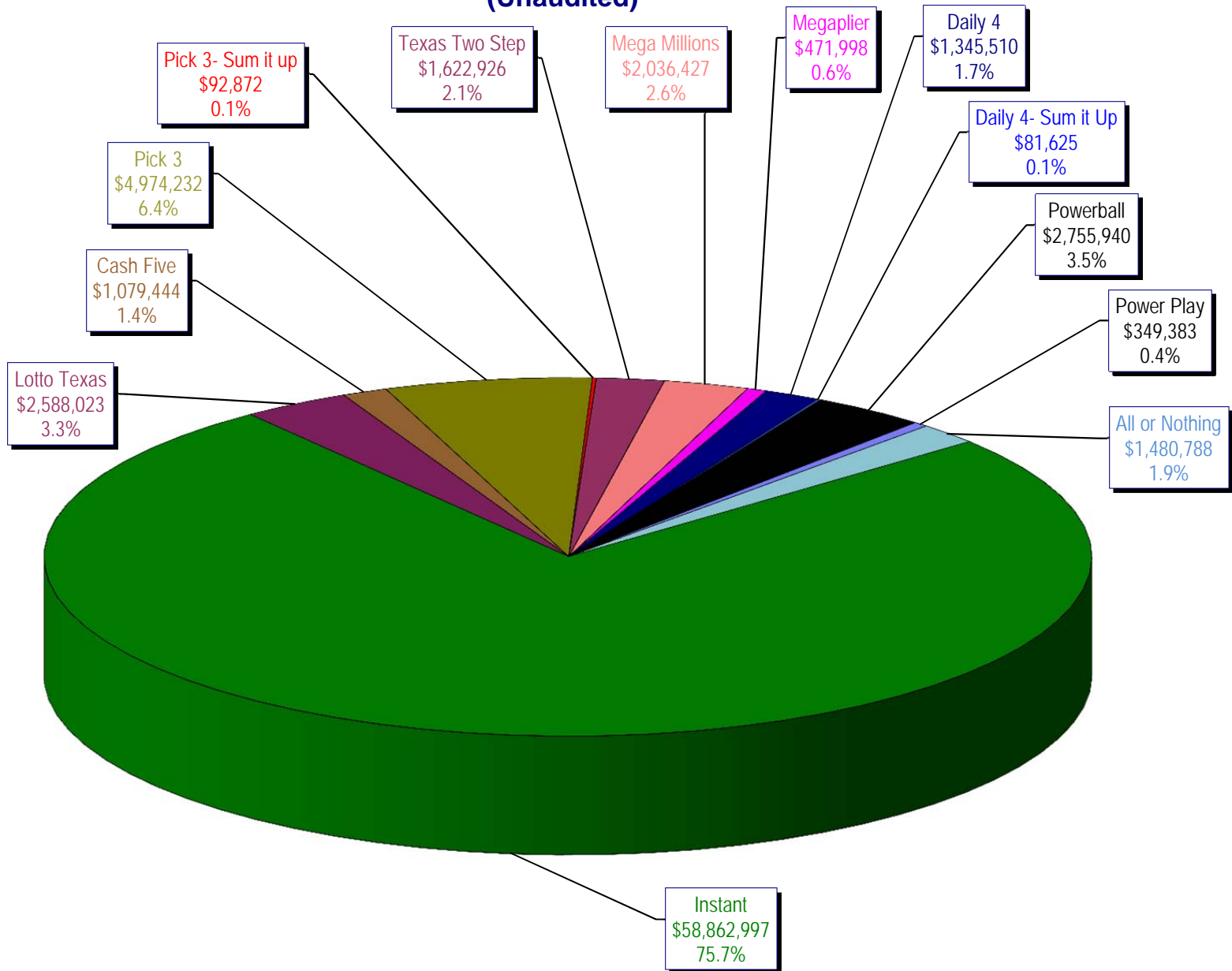
* Before Unclaimed Prizes

** Estimated; depends on # of guaranteed prizes won in Texas

Texas Lottery Commission
Instant Ticket Sales
For the Week Ending 01/12/13
(Unaudited)



**Texas Lottery Commission
All Game Sales
For the Week Ending 01/12/13
(Unaudited)**



Texas Lottery Commission - Weekly Sales Summary for FY 2013 (Unaudited)

Week Ended	Instant Games	New Games & Dates	Lotto Texas	Jackpot W S	Pick 3	Pick 3 Sum It Up	Cash Five	Texas Two Step	Jackpot M TH	Mega Millions	Jackpot T F	Megaplier	Daily 4	Daily 4 Sum It Up	Powerball	Jackpot W S	Power Play	All or Nothing	Total	Per Cap.
9/1/2012	56,975,312	1446 (\$1, N); 1444 (\$2, N) - 08/27/12	2,972,415	12 13	4,967,337	105,441	1,198,597	1,455,689	500 675	2,769,421	73 83	612,072	1,419,103	97,265	2,680,694	70 80	364,030		75,617,375	2.95
9/8/2012	56,941,761	1440 (\$2, N); 1458 (\$3, N); 1459 (\$5, N) - 09/03/12	3,005,564	14 15	5,112,132	106,959	1,185,494	1,179,003	875 200	3,140,536	93 105	665,392	1,412,279	99,861	3,002,910	90 100	395,287		76,247,178	2.97
9/15/2012	56,302,875	1452 (\$3, N) - 09/10/12	2,999,894	16 17	4,785,209	95,720	1,118,519	894,412	225 200	2,684,227	120 12	580,869	1,290,478	90,795	3,373,296	110 125	417,470	2,526,342	77,160,105	3.01
9/22/2012	54,974,438	1460 (\$1, N); 1461 (\$5, N) - 09/17/12	2,986,898	18 19	4,611,684	89,173	1,091,440	986,264	225 325	1,874,336	15 12	452,082	1,258,191	86,390	4,122,790	149 174	479,344	2,531,686	75,544,715	2.94
9/29/2012	54,606,674	1462 (\$2, N); 1472 (\$10, N) - 09/24/12	3,047,519	20 21	4,708,250	90,752	1,077,739	1,313,257	475 625	1,884,366	14 21	452,334	1,278,847	87,211	3,779,359	200 40	445,091	2,297,966	75,069,364	2.92
10/6/2012	59,223,327	1464 (\$5, N) - 10/01/12	3,164,231	22 23	4,947,571	96,251	1,121,146	1,188,386	800 200	2,055,918	28 36	482,303	1,310,612	89,270	2,266,428	50 40	312,877	2,244,980	78,503,300	3.06
10/13/2012	57,075,606	1465 (\$1, N); 1466 (\$20, N) - 10/08/2012	3,133,742	24 25	4,793,793	89,663	1,074,687	865,146	225 200	2,163,099	45 53	492,614	1,261,858	84,585	2,241,120	50 60	309,684	2,128,476	75,714,073	2.95
10/20/2012	56,630,134	1467 (\$1, N); 1468 (\$5, N) - 10/15/12	3,172,820	26 27	4,959,071	88,413	1,074,980	970,100	225 325	1,984,966	61 12	466,730	1,296,602	84,868	2,447,518	70 80	328,436	2,124,439	75,629,077	2.95
10/27/2012	55,789,743	1469 (\$2, N); 1470 (\$10, N) - 10/22/2012	3,204,694	28 29	5,550,567	96,242	1,063,201	1,226,578	450 600	1,778,725	13 21	430,528	1,381,019	91,618	2,914,062	90 100	371,273	2,021,684	75,919,933	2.96
11/3/2012	58,142,777	1503 (\$5, N) - 10/29/2012	3,392,650	30 31	5,501,964	101,742	1,078,593	860,073	200 225	1,950,117	27 32	462,385	1,393,099	93,773	3,466,242	110 124	424,170	1,913,200	78,780,785	3.07
11/10/2012	57,484,804	1475 (\$1, N); 1476 (\$3, N) - 11/05/2012	3,061,999	32 4	5,468,924	100,767	1,083,928	837,666	200 200	1,783,099	12 13	430,343	1,402,194	94,451	4,246,246	143 168	491,538	1,861,718	78,347,676	3.05
11/17/2012	55,805,228	1477 (\$2, N); 1478 (\$5, N) - 11/12/2012	2,599,190	5 6	5,248,059	91,989	1,059,723	920,319	225 300	1,841,571	19 26	440,783	1,345,121	88,391	5,638,425	185 214	615,323	1,771,812	77,465,933	3.02
11/24/2012	61,331,977	1394 (\$50, N) - 11/19/2012	2,768,876	7 8	5,086,879	91,409	1,021,878	883,407	425 200	2,003,365	33 41	472,723	1,300,693	85,037	10,768,045	250 325	1,053,006	1,637,536	88,504,830	3.45
12/1/2012	58,420,598	0	3,304,053	9 10	5,123,778	97,511	1,086,916	925,805	225 275	2,358,380	49 12	533,175	1,319,684	92,240	43,264,700	550 40	2,894,606	1,797,096	121,218,541	4.72
12/8/2012	62,489,745	1479 (\$1, N); 1485 (\$5, N) - 12/03/12	2,971,837	11 12	5,374,747	101,479	1,129,990	1,359,739	425 575	1,861,503	13 20	445,171	1,391,477	94,879	2,832,293	50 40	362,145	1,704,896	82,119,900	3.20
12/15/2012	59,661,880	0	3,087,087	13 14	5,221,374	98,173	1,104,769	1,928,422	775 1,000	1,933,357	27 35	456,193	1,398,647	88,811	2,808,938	50 40	364,704	1,574,508	79,726,862	3.11
12/22/2012	63,556,886	1481 (\$1, N); 1482 (\$2, N); 1483 (\$5, N) - 12/17/12	3,076,409	15 16	5,170,946	94,116	1,108,894	1,415,548	1,250 200	1,774,922	12 12	431,471	1,385,861	87,012	2,658,349	50 40	349,278	1,531,847	82,641,539	3.22
12/29/2012	63,547,886	0	2,869,329	17 18	4,868,470	90,224	1,041,264	922,869	200 225	1,670,747	18 25	400,587	1,289,758	79,651	2,413,294	50 40	324,222	1,389,460	80,907,760	3.15
1/5/2013	60,452,721	1484 (\$5, N) - 12/31/12	2,962,822	19 20	5,157,831	97,210	1,098,429	1,363,512	350 500	1,865,613	30 39	443,570	1,396,145	87,787	2,524,666	50 60	339,142	1,496,322	79,285,768	3.09
1/12/2013	58,862,997	1386 (\$2, N); 1536 (\$10, N) - 01/07/2013	2,588,023	4 5	4,974,232	92,872	1,079,444	1,622,926	700 900	2,036,427	47 55	471,998	1,345,510	81,625	2,755,940	70 80	349,383	1,480,788	77,742,164	3.03
weekly change	-2.6%		-12.7%		-3.6%	-4.5%	-1.7%	19.0%		9.2%		6.4%	-3.6%	-7.0%	9.2%		3.0%	-1.0%		-1.9%
SALES			SALES		SALES	SALES	SALES	SALES		SALES		SALES	SALES	SALES	SALES		SALES		SALES	% of Sales
Calendar Year to date	3,254,316,197		169,203,098		283,060,552	5,718,872	64,969,676	66,224,043		196,909,794		38,547,329	73,346,484	5,060,393	238,872,169		27,748,622	34,034,756	4,458,011,983	100.0%
Fiscal Year to date 2013	1,120,913,385		58,457,261		97,577,944	1,829,938	20,901,557	21,744,221		38,785,352		9,037,981	25,705,800	1,705,567	108,409,077		10,750,523	34,034,756	1,549,853,361	100.0%