



WEEKLY SALES SUMMARY

Unaudited

Week Ending: 1/13/2018

Texas Lottery Commission
Fiscal Year to Date Sales Comparison
Unaudited

Through the Week Ending 1/13/2018 (20 Weeks)

Sales by Game	FY 2016 *	FY 2017 **	FY 2018	\$ Change		% Change	
				FY 2018 to FY 2016	FY 2018 to FY 2017	FY 2018 to FY 2016	FY 2018 to FY 2017
Scratch Tickets	\$ 1,340,720,674	\$ 1,388,963,491	\$ 1,536,785,059	\$ 196,064,385	\$ 147,821,568	14.6%	10.6%
Lotto Texas	50,248,600	41,373,309	42,724,204	-7,524,396	1,350,895	-15.0%	3.3%
Lotto Extra	8,472,122	7,940,408	9,201,816	729,694	1,261,408	8.6%	15.9%
Pick 3	95,371,998	92,172,213	92,075,372	-3,296,626	-96,842	-3.5%	-0.1%
Pick 3 Sum It Up	1,912,028	1,750,962	1,823,966	-88,063	73,004	-4.6%	4.2%
Cash Five	17,594,819	16,401,304	15,745,818	-1,849,001	-655,486	-10.5%	-4.0%
Texas Two Step	19,560,495	20,334,468	17,937,055	-1,623,440	-2,397,413	-8.3%	-11.8%
Mega Millions	51,241,817	40,280,878	73,233,110	21,991,293	32,952,232	42.9%	81.8%
Megaplier	12,663,075	10,976,495	12,692,676	29,601	1,716,181	0.2%	15.6%
MM Just the Jackpot	-	-	676,362	676,362	676,362	-	-
Daily 4	33,037,320	34,841,006	39,667,155	6,629,835	4,826,149	20.1%	13.9%
Daily 4 Sum It Up	1,718,847	1,859,761	2,169,476	450,630	309,716	26.2%	16.7%
Powerball	288,033,623	81,661,593	110,146,729	-177,886,894	28,485,136	-61.8%	34.9%
Power Play	29,899,328	11,555,873	15,938,058	-13,961,270	4,382,185	-46.7%	37.9%
All or Nothing	11,804,824	10,827,346	10,739,120	-1,065,704	-88,226	-9.0%	-0.8%
Texas Triple Chance	10,584,985	5,880,908	4,717,304	-5,867,681	-1,163,604	-55.4%	-19.8%
Total	\$ 1,972,864,554	\$ 1,766,820,014	\$ 1,986,273,278	\$ 13,408,724	\$ 219,453,264	0.7%	12.4%

* 3 extra days

** 1 extra day

Texas Lottery Commission
Fiscal Year to Date Cumulative Average Sales Comparison
Unaudited

Through the Week Ending 1/13/2018 (20 Weeks)

Sales by Game	FY 2016	FY 2017	FY 2018
Scratch Tickets	\$ 9,715,367	\$ 10,212,967	\$ 11,383,593
Lotto Texas	364,120	304,216	316,476
Lotto Extra	61,392	58,385	68,162
Pick 3	691,101	677,737	682,040
Pick 3 Sum It Up	13,855	12,875	13,511
Cash Five	127,499	120,598	116,636
Texas Two Step	141,743	149,518	132,867
Mega Millions	371,318	296,183	542,467
Megaplier	91,761	80,710	94,020
MM Just the Jackpot	-	- **	8,671
Daily 4	239,401	256,184	293,831
Daily 4 Sum It Up	12,455	13,675	16,070
Powerball	2,087,200	600,453	815,902
Power Play	216,662	84,970	118,060
All or Nothing	85,542	79,613	79,549
Texas Triple Chance *	94,509	43,242	34,943
Total	\$ 14,313,926	\$ 12,991,324	\$ 14,716,797

thru 1/16/2016

138 days

*

112 days

thru 1/14/2017

136 days

**

thru 1/13/2018

135 days

78 days

Texas Lottery Commission
Fiscal Year Over Year Change in Sales
Unaudited
FY 2018 Compared to FY 2017

			SCRATCH TICKETS				DRAW GAMES				TOTAL SALES			
FY 2018			FY 2018	FY 2017	Difference	% change - Cumulative Sales	FY 2018	FY 2017	Difference	% change - Cumulative Sales	FY 2018	FY 2017	Difference	% change - Cumulative Sales
Week	Week Ending													
1	9/2/2017 *		\$23,058,926	\$32,980,266	(\$9,921,340)	-30.1%	\$6,902,847	\$10,218,656	(\$3,315,809)	-32.4%	\$29,961,773	\$43,198,922	(\$13,237,149)	-30.6%
2	9/9/2017		\$71,784,232	\$65,952,418	\$5,831,814	8.8%	\$18,779,001	\$19,635,377	(\$856,376)	-4.4%	\$90,563,233	\$85,587,795	\$4,975,438	5.8%
3	9/16/2017		\$72,828,393	\$66,196,270	\$6,632,123	10.0%	\$19,679,292	\$20,915,290	(\$1,235,999)	-5.9%	\$92,507,685	\$87,111,560	\$5,396,125	6.2%
4	9/23/2017		\$71,147,147	\$64,383,005	\$6,764,142	10.5%	\$18,601,742	\$17,451,165	\$1,150,577	6.6%	\$89,748,889	\$81,834,170	\$7,914,719	9.7%
5	9/30/2017		\$74,749,619	\$67,349,951	\$7,399,668	11.0%	\$18,436,682	\$17,519,852	\$916,830	5.2%	\$93,186,301	\$84,869,803	\$8,316,498	9.8%
6	10/7/2017		\$78,134,381	\$71,598,690	\$6,535,691	9.1%	\$19,297,281	\$18,211,107	\$1,086,174	6.0%	\$97,431,662	\$89,809,797	\$7,621,865	8.5%
7	10/14/2017		\$74,084,207	\$69,444,762	\$4,639,445	6.7%	\$19,185,335	\$18,075,261	\$1,110,074	6.1%	\$93,269,542	\$87,520,023	\$5,749,519	6.6%
8	10/21/2017		\$77,631,892	\$69,317,066	\$8,314,826	12.0%	\$19,573,636	\$18,422,336	\$1,151,300	6.2%	\$97,205,528	\$87,739,402	\$9,466,126	10.8%
9	10/28/2017		\$76,385,130	\$69,729,599	\$6,655,531	9.5%	\$18,788,634	\$18,535,248	\$253,386	1.4%	\$95,173,764	\$88,264,847	\$6,908,917	7.8%
10	11/4/2017		\$78,814,323	\$73,451,702	\$5,362,621	7.3%	\$19,564,629	\$20,151,939	(\$587,310)	-2.9%	\$98,378,952	\$93,603,641	\$4,775,312	5.1%
11	11/11/2017		\$78,572,697	\$70,998,320	\$7,574,377	10.7%	\$19,317,440	\$19,925,460	(\$608,020)	-3.1%	\$97,890,137	\$90,923,780	\$6,966,358	7.7%
12	11/18/2017		\$81,674,704	\$75,265,196	\$6,409,508	8.5%	\$19,938,001	\$21,424,637	(\$1,486,636)	-6.9%	\$101,612,705	\$96,689,833	\$4,922,872	5.1%
13	11/25/2017		\$84,916,870	\$68,983,157	\$15,933,713	23.1%	\$19,968,524	\$24,223,331	(\$4,254,808)	-17.6%	\$104,885,393	\$93,206,488	\$11,678,905	12.5%
14	12/2/2017		\$81,453,005	\$72,688,514	\$8,764,491	12.1%	\$21,685,175	\$17,653,328	\$4,031,847	22.8%	\$103,138,180	\$90,341,842	\$12,796,338	14.2%
15	12/9/2017		\$81,251,421	\$71,676,549	\$9,574,872	13.4%	\$21,277,106	\$18,150,590	\$3,126,516	17.2%	\$102,528,526	\$89,827,139	\$12,701,388	14.1%
16	12/16/2017		\$83,850,250	\$73,909,726	\$9,940,524	13.4%	\$23,199,797	\$19,814,333	\$3,385,464	17.1%	\$107,050,047	\$93,724,059	\$13,325,988	14.2%
17	12/23/2017		\$87,941,872	\$77,369,179	\$10,572,693	13.7%	\$27,161,624	\$19,276,415	\$7,885,209	40.9%	\$115,103,496	\$96,645,594	\$18,457,902	19.1%
18	12/30/2017		\$88,089,746	\$80,868,854	\$7,220,892	8.9%	\$36,811,359	\$19,289,161	\$17,522,199	90.8%	\$124,901,105	\$100,158,015	\$24,743,091	24.7%
19	1/6/2018		\$85,627,935	\$73,328,624	\$12,299,311	16.8%	\$61,522,424	\$18,611,644	\$42,910,781	230.6%	\$147,150,359	\$91,940,268	\$55,210,091	60.0%
20	1/13/2018		\$84,788,310	\$73,471,643	\$11,316,667	15.4%	\$19,797,694	\$20,351,397	(\$553,703)	-2.7%	\$104,586,004	\$93,823,040	\$10,762,964	11.5%
21	1/20/2018			\$72,229,342				\$20,349,310				\$92,578,652		
22	1/27/2018			\$72,056,793				\$21,668,657				\$93,725,450		
23	2/3/2018			\$77,292,806				\$22,161,789				\$99,454,595		
24	2/10/2018			\$78,699,192				\$22,100,245				\$100,799,437		
25	2/17/2018			\$77,864,124				\$24,776,465				\$102,640,589		
26	2/24/2018			\$80,287,015				\$28,133,116				\$108,420,131		
27	3/3/2018			\$87,500,184				\$20,213,859				\$107,714,043		
28	3/10/2018			\$84,966,053				\$21,024,757				\$105,990,810		
29	3/17/2018			\$82,972,977				\$20,434,291				\$103,407,268		
30	3/24/2018			\$82,217,628				\$20,282,992				\$102,500,620		
31	3/31/2018			\$86,271,920				\$19,497,142				\$105,769,062		
32	4/7/2018			\$81,499,404				\$17,854,294				\$99,353,698		
33	4/14/2018			\$81,831,134				\$17,865,636				\$99,696,770		
34	4/21/2018			\$80,531,863				\$18,337,257				\$98,869,120		
35	4/28/2018			\$81,433,819				\$18,956,981				\$100,390,800		
36	5/5/2018			\$84,857,262				\$19,489,624				\$104,346,886		
37	5/12/2018			\$81,090,824				\$19,420,237				\$100,511,061		
38	5/19/2018			\$80,557,866				\$20,939,291				\$101,497,157		
39	5/26/2018			\$78,141,293				\$21,072,651				\$99,213,944		
40	6/2/2018			\$78,991,820				\$23,569,252				\$102,561,072		
41	6/9/2018			\$77,859,970				\$29,337,930				\$107,197,900		
42	6/16/2018			\$75,964,093				\$18,618,777				\$94,582,870		

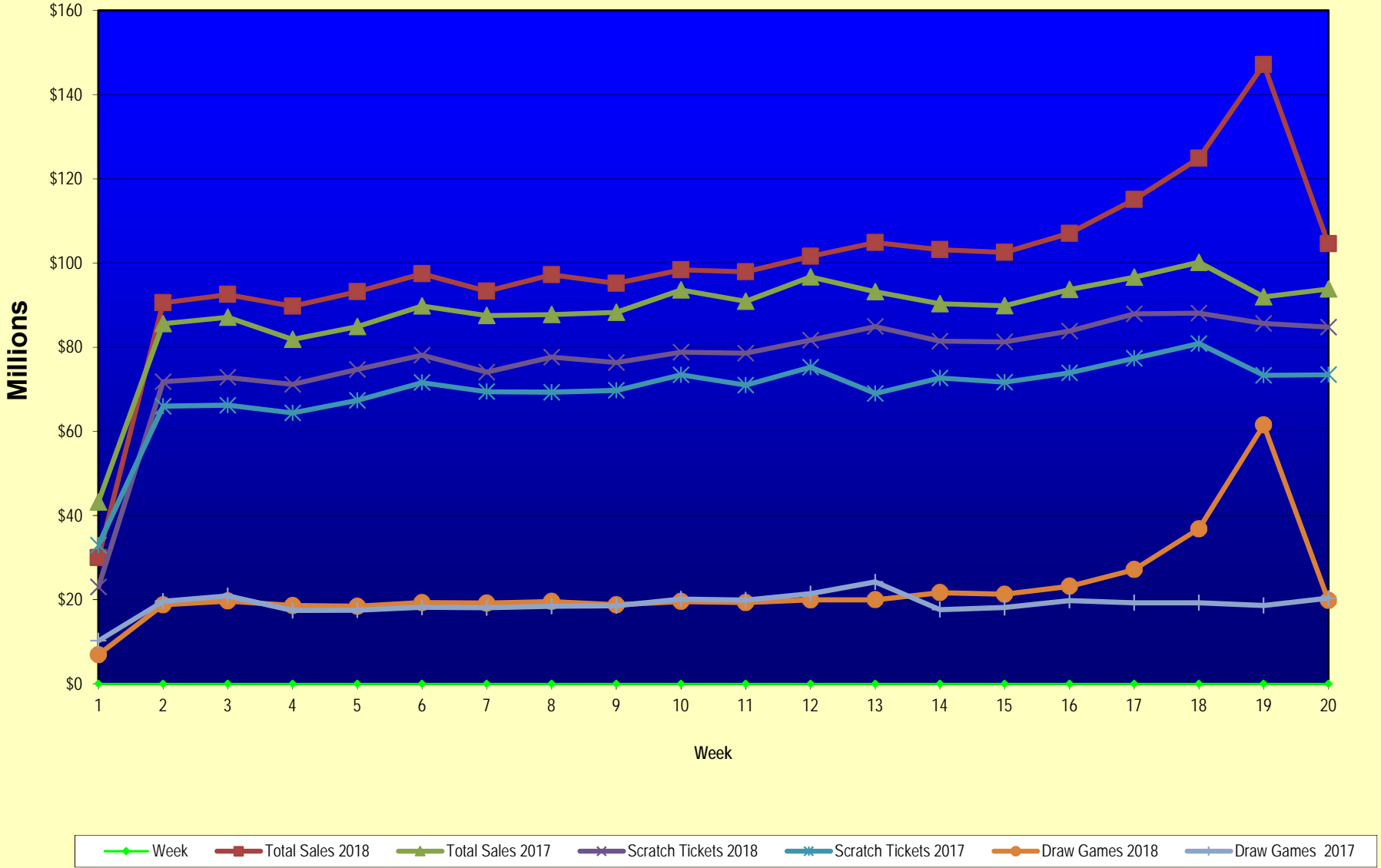
Texas Lottery Commission
Fiscal Year Over Year Change in Sales
Unaudited
FY 2018 Compared to FY 2017

			SCRATCH TICKETS				DRAW GAMES				TOTAL SALES			
FY 2018			FY 2018	FY 2017	Difference	% change - Cumulative Sales	FY 2018	FY 2017	Difference	% change - Cumulative Sales	FY 2018	FY 2017	Difference	% change - Cumulative Sales
Week	Week	Ending												
43	6/23/2018			\$75,379,863				\$18,464,310				\$93,844,173		
44	6/30/2018			\$76,450,854				\$19,685,004				\$96,135,858		
45	7/7/2018			\$75,420,516				\$20,817,697				\$96,238,213		
46	7/14/2018			\$74,068,426				\$21,553,240				\$95,621,666		
47	7/21/2018			\$75,926,884				\$21,909,933				\$97,836,817		
48	7/28/2018			\$68,526,927				\$22,791,762				\$91,318,689		
49	8/4/2018			\$74,104,794				\$27,396,555				\$101,501,349		
50	8/11/2018			\$73,356,820				\$37,340,879				\$110,697,699		
51	8/18/2018			\$74,114,510				\$42,787,014				\$116,901,524		
52	8/25/2018			\$70,061,982				\$55,854,516				\$125,916,498		
	8/31/2018 **			\$43,727,573				\$9,679,652				\$53,407,225		
Total thru Current Week			\$1,536,785,059	\$1,388,963,491	\$147,821,568	10.6%	\$449,488,219	\$377,856,523	\$71,631,696	19.0%	\$1,986,273,278	\$1,766,820,014	\$219,453,264	12.4%
Fiscal Year Total			\$1,536,785,059	\$3,935,220,022			\$449,488,219	\$1,142,241,630			\$1,986,273,278	\$5,077,461,652		

* FY 18 includes 2 days; FY 17 includes 3 days

** FY 18 includes 6 days; FY 17 includes 5 days

Texas Lottery Commission Fiscal Year Over Year Change in Sales



Note: Week 1 is not a full week of sales as this report is prepared on a Fiscal Year basis.

Texas Lottery Commission
Scratch Tickets by Price Point
Sales, Prize Expense, Sales Contribution and Payout Percentage With Year Over Year Changes
Unaudited

Fiscal Year	Price Point	# of Active Games	FY Sales	% of Scratch Ticket Sales	Year over Year Change in Sales	FY Prize Expense	Year over Year Change in Prize Expense	FY Sales Contribution	Year over Year Change in Contribution	Average Prize Payout %	Year over Year Change in Payout %
2017	\$1.00	18	55,149,987	4.0%		33,307,556		21,842,431		60.4%	0.3%
Through	\$2.00	23	118,763,856	8.6%		77,335,788		41,428,068		65.1%	-0.1%
1/14/2017	\$3.00	8	94,940,838	6.8%		62,583,497		32,357,341		65.9%	0.0%
	\$5.00	42	442,950,020	31.9%		300,974,660		141,975,360		67.9%	0.0%
	\$10.00	17	295,236,000	21.3%		208,148,875		87,087,125		70.5%	0.5%
	\$20.00	11	310,529,540	22.4%		232,688,604		77,840,936		74.9%	0.0%
	\$50.00	4	71,393,250	5.1%		55,552,570		15,840,680		77.8%	0.0%
Total		123	\$1,388,963,491			\$970,591,550		\$418,371,941		69.9%	0.5%
2018	\$1.00	18	57,873,537	3.8%		34,951,287		22,922,250		60.4%	0.2%
Through	\$2.00	19	107,419,114	7.0%		69,885,095		37,534,019		65.1%	-0.1%
1/13/2018	\$3.00	11	108,760,968	7.1%		71,757,138		37,003,830		66.0%	0.1%
	\$5.00	48	438,742,820	28.5%		298,294,792		140,448,028		68.0%	0.0%
	\$10.00	17	369,499,690	24.0%		258,874,041		110,625,649		70.1%	-0.3%
	\$20.00	15	336,129,080	21.9%		251,935,053		84,194,027		75.0%	0.0%
	\$50.00	4	118,359,850	7.7%		92,277,215		26,082,635		78.0%	0.1%
Total		132	\$1,536,785,059			\$1,077,974,620		\$458,810,439		70.1%	0.4%
Variance	\$1.00	0	2,723,550		4.9%	1,643,731	4.9%	1,079,819	4.9%	0.00%	
2018 to	\$2.00	-4	-11,344,742		-9.6%	-7,450,694	-9.6%	-3,894,048	-9.4%	-0.06%	
2017	\$3.00	3	13,820,130		14.6%	9,173,640	14.7%	4,646,490	14.4%	0.06%	
	\$5.00	6	-4,207,200		-0.9%	-2,679,868	-0.9%	-1,527,332	-1.1%	0.04%	
	\$10.00	0	74,263,690		25.2%	50,725,166	24.4%	23,538,524	27.0%	-0.44%	
	\$20.00	4	25,599,540		8.2%	19,246,449	8.3%	6,353,091	8.2%	0.02%	
	\$50.00	0	46,966,600		65.8%	36,724,645	66.1%	10,241,955	64.7%	0.15%	
Total		9	\$147,821,568		10.6%	\$107,383,069	11.1%	\$40,438,499	9.7%	0.27%	

Notes - Scratch Ticket Variances

Texas Lottery Commission
Scratch Tickets by Price Point
Sales, Prize Expense, Sales Contribution and Payout Percentage With Year Over Year Changes
Unaudited

			FY 2018		FY 2017	Difference
Sales	\$1 - \$5		\$712,796,439		\$711,804,701	\$991,738
Prize Exp.	\$1 - \$5		\$474,888,311		\$474,201,501	\$686,809
Sales Cont.	\$1 - \$5		\$237,908,128		\$237,603,200	\$304,929
Prize Exp. %	\$1 - \$5		66.6%		66.6%	0.0%
			FY 2018		FY 2017	Difference
Sales	\$10 - \$50		\$823,988,620		\$677,158,790	\$146,829,830
Prize Exp.	\$10 - \$50		\$603,086,309		\$496,390,049	\$106,696,260
Sales Cont.	\$10 - \$50		\$220,902,311		\$180,768,741	\$40,133,570
Prize Exp. %	\$10 - \$50		73.2%		73.3%	-0.1%
			FY 2018		FY 2017	Difference
Sales	Scratch		\$1,536,785,059		\$1,388,963,491	\$147,821,568
Prize Exp.	Scratch		\$1,077,974,620		\$970,591,550	\$107,383,069
Sales Cont.	Scratch		\$458,810,439		\$418,371,941	\$40,438,499
Prize Exp. %	Scratch		70.1%		69.9%	0.3%

			FY 2018		FY 2017	Difference
Sales	\$1 - \$10		\$1,082,296,129		\$1,007,040,701	\$75,255,428
Prize Exp.	\$1 - \$10		\$733,762,352		\$682,350,376	\$51,411,975
Sales Cont.	\$1 - \$10		\$348,533,778		\$324,690,325	\$23,843,453
Prize Exp. %	\$1 - \$10		67.8%		67.8%	0.0%
			FY 2018		FY 2017	Difference
Sales	\$20 - \$50		\$454,488,930		\$381,922,790	\$72,566,140
Prize Exp.	\$20 - \$50		\$344,212,268		\$288,241,174	\$55,971,094
Sales Cont.	\$20 - \$50		\$110,276,662		\$93,681,616	\$16,595,046
Prize Exp. %	\$20 - \$50		75.7%		75.5%	0.3%
			FY 2018		FY 2017	Difference
Sales	Scratch		\$1,536,785,059		\$1,388,963,491	\$147,821,568
Prize Exp.	Scratch		\$1,077,974,620		\$970,591,550	\$107,383,069
Sales Cont.	Scratch		\$458,810,439		\$418,371,941	\$40,438,499
Prize Exp. %	Scratch		70.1%		69.9%	0.3%

Texas Lottery Commission
 Weekly Sales Summary
 & Comparison to Previous Week
 Unaudited

	Week Ending 1/13/2018	% of Sales	Week Ending 1/06/2018	% of Sales	\$ change	% change
	<u>THIS WEEK</u>		<u>LAST WEEK</u>			
Total Sales	<u>\$104,586,004</u>		<u>\$147,150,359</u>		<u>-\$42,564,355</u>	-28.93%
Scratch Tickets	<u>\$84,788,310</u>	81.1%	<u>\$85,627,935</u>	58.2%	<u>-\$839,625</u>	-0.98%
Lotto	\$2,040,927	2.0%	\$2,549,259	1.7%	-\$508,332	-19.94%
Lotto Extra	\$448,742	0.4%	\$569,992	0.4%	-\$121,250	-21.27%
Pick 3	\$4,766,520	4.6%	\$4,638,623	3.2%	\$127,898	2.76%
Pick 3 Sum It Up	\$102,572	0.1%	\$101,857	0.1%	\$715	0.70%
Cash Five	\$825,080	0.8%	\$819,523	0.6%	\$5,558	0.68%
Texas Two Step	\$1,089,485	1.0%	\$806,400	0.5%	\$283,085	35.10%
Mega Millions	\$2,922,316	2.8%	\$17,181,579	11.7%	-\$14,259,263	-82.99%
Megaplier	\$466,464	0.4%	\$2,125,075	1.4%	-\$1,658,611	-78.05%
MM Just the Jackpot	\$29,142	0.0%	\$99,750	0.1%	-\$70,608	-70.78%
Daily 4	\$1,999,808	1.9%	\$1,971,281	1.3%	\$28,527	1.45%
Daily 4 Sum It Up	\$111,260	0.1%	\$118,574	0.1%	-\$7,314	-6.17%
Powerball	\$3,619,230	3.5%	\$26,448,160	18.0%	-\$22,828,930	-86.32%
Power Play	\$576,948	0.6%	\$3,306,119	2.2%	-\$2,729,171	-82.55%
All or Nothing	\$559,134	0.5%	\$536,082	0.4%	\$23,052	4.30%
Texas Triple Chance	\$240,066	0.2%	\$250,152	0.2%	-\$10,086	-4.03%
Total Draw Game Sales	<u>\$19,797,694</u>		<u>\$61,522,424</u>		<u>-\$41,724,731</u>	-67.82%

* Totals may not sum due to rounding.

Texas Lottery Commission
Weekly Sales Summary
Unaudited

SCRATCH TICKETS
TOP TEN SELLING GAMES

For the week ending: 1/13/2018

Rank	Price Point	Game	Sales (Millions)
1	\$ 20	\$1,000,000 BIG MONEY	\$ 5.461
2	\$ 10	SUPER 7'S	\$ 5.060
3	\$ 20	MEGA 7'S	\$ 4.562
4	\$ 10	MEGA LOTERIA	\$ 3.838
5	\$ 5	LUCKY 7'S	\$ 3.619
6	\$ 50	TEXAS LOTTERY PLATINUM	\$ 3.348
7	\$ 10	\$50 OR \$100!	\$ 3.176
8	\$ 5	MONEY	\$ 2.891
9	\$ 5	SUPER LOTERIA	\$ 2.557
10	\$ 20	INSTANT MILLIONAIRE	\$ 2.406

Texas Lottery Commission
Prize Payout Tracking Report
Unaudited

Through the week ending: 1/13/2018

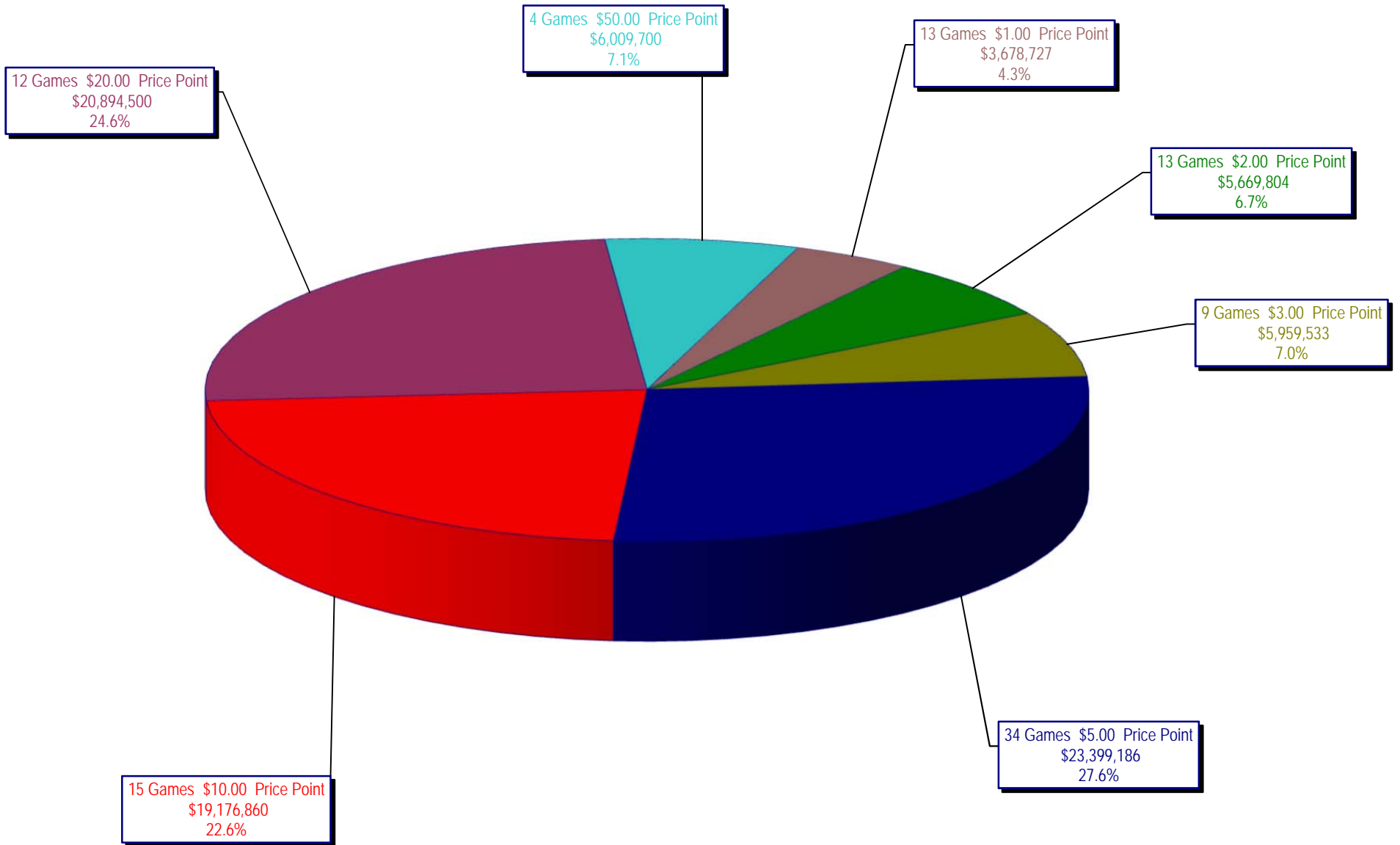
Draw Game Sales

		FY Sales Through Week Ending 1/13/2018		FY Prize Expense Through Week Ending 1/13/2018	Actual* Prize Payout	Base Payout (Prize Pool)
Lotto	\$	42,724,204	\$	26,960,627	63.10%	50.00%
Lotto Extra		9,201,816		5,221,904	56.75%	53.70%
Pick 3		92,075,372		43,205,040	46.92%	50.00%
Pick 3 Sum It Up		1,823,966		856,085	46.94%	50.00%
Cash Five		15,745,818		7,873,001	50.00%	50.00%
Texas Two Step		17,937,055		8,988,936	50.11%	50.00%
Mega Millions		73,233,110		38,381,371	52.41%	50.00%**
Megaplier		12,692,676		6,506,706	51.26%	N/A
MM Just the Jackpot		676,362		334,349	49.43%	50.00%**
Daily 4		39,667,155		23,246,250	58.60%	50.00%
Daily 4 Sum It Up		2,169,476		847,505	39.06%	50.00%
Powerball		110,146,729		55,208,482	50.12%	50.00%**
Power Play		15,938,058		7,992,897	50.15%	N/A
All or Nothing		10,739,120		6,479,618	60.34%	55.98%
Texas Triple Chance		4,717,304		2,349,859	49.81%	54.42%
Totals	\$	449,488,219	\$	234,452,629	52.16%	

* Before Unclaimed Prizes

**Estimated; depends on # of guaranteed prizes won in Texas

Texas Lottery Commission
Scratch Ticket Sales
For the week ending 1/13/2018
(Unaudited)



Texas Lottery Commission
All Game Sales
For the week ending 1/13/2018
(Unaudited)

