



WEEKLY SALES SUMMARY

Unaudited

[Week Ending: 01/14/2012](#)

Texas Lottery Commission
Fiscal Year to Date Sales Comparison
Unaudited

Through the week ending 01/14/12 (20 weeks)

Sales by Game	FY 2010 *	FY 2011 **	FY 2012	\$ Change		% Change	
				FY 2012 to FY 2010	FY 2012 to FY 2011 to	FY 2012 to FY 2010	FY 2012 to FY 2011
Instants	\$ 1,037,431,523	\$ 1,040,360,021	\$ 1,070,907,964	\$ 33,476,441	\$ 30,547,943	3.2%	2.9%
Lotto Texas	102,930,292	64,048,724	65,397,632	-37,532,660	1,348,908	-36.5%	2.1%
Pick 3	100,954,908	101,686,947	98,772,300	-2,182,608	-2,914,647	-2.2%	-2.9%
Pick 3 Sum It Up	2,007,415	2,064,628	2,010,616	3,202	-54,012	0.2%	-2.6%
Cash Five	25,465,457	24,134,296	24,095,411	-1,370,046	-38,885	-5.4%	-0.2%
Texas Two Step	17,327,644	18,036,010	22,686,317	5,358,673	4,650,307	30.9%	25.8%
Mega Millions	72,173,823	76,088,925	58,205,559	-13,968,264	-17,883,366	-19.4%	-23.5%
Megaplier	16,184,180	14,777,798	12,825,041	-3,359,139	-1,952,757	-20.8%	-13.2%
Daily 4	19,546,857	21,076,352	23,335,143	3,788,286	2,258,791	19.4%	10.7%
Daily 4 Sum It Up	1,879,929	1,659,893	1,725,574	-154,355	65,682	-8.2%	4.0%
Powerball	-	31,274,385	45,688,892	45,688,892	14,414,507	-	-
Power Play	-	7,570,769	10,076,884	10,076,884	2,506,115	-	-
Total	\$ 1,395,902,027	\$ 1,402,778,747	\$ 1,435,727,333	\$ 39,825,306	\$ 32,948,586	2.9%	2.3%

* 2 extra days

** 1 extra day

Texas Lottery Commission
Fiscal Year to Date Cumulative Average Sales Comparison
Unaudited

Through the week ending 01/14/2012 (20 weeks)

Sales by Game	FY 2010	FY 2011	FY 2012
Instant	\$ 7,517,620	\$ 7,593,869	\$ 7,874,323
Lotto Texas	745,872	467,509	480,865
Pick 3	731,557	742,240	726,267
Pick 3 Sum It Up	14,546	15,070	14,784
Cash Five	184,532	176,163	177,172
Texas Two Step	125,563	131,650	166,811
Mega Millions	522,999	555,394	427,982
Megaplier	117,277	107,867	94,302
Daily 4	141,644	153,842	171,582
Daily 4 Sum It Up	13,623	12,116	12,688
Powerball	-	228,280	335,948
Power Play	-	55,261	74,095
Total	\$ <u>10,115,232</u>	\$ <u>10,239,261</u>	\$ <u>10,556,819</u>
	thru 01/16/2010 138 days	thru 01/15/2011 137 days	thru 01/14/2012 136 days

Texas Lottery Commission
Fiscal Year Over Year Change in Sales
Unaudited
FY 2012 Compared to FY 2011

Week	FY 2012 Week Ending	INSTANT TICKETS				ON-LINE GAMES				TOTAL SALES			
		FY 2012	FY 2011	Difference	% change - Cumulative Sales	FY 2012	FY 2011	Difference	% change - Cumulative Sales	FY 2012	FY 2011	Difference	% change - Cumulative Sales
1	9/3/2011**	\$25,147,181	\$31,659,033	(\$6,511,852)	-20.6%	\$9,704,561	\$11,430,717	(\$1,726,156)	-15.1%	\$34,851,742	\$43,089,750	(\$8,238,008)	-19.1%
2	9/10/2011	\$50,591,068	\$48,912,598	\$1,678,470	3.4%	\$17,681,853	\$16,398,160	\$1,283,693	7.8%	\$68,272,921	\$65,310,758	\$2,962,163	4.5%
3	9/17/2011	\$49,835,063	\$48,988,241	\$846,822	1.7%	\$16,842,326	\$17,166,827	(\$324,501)	-1.9%	\$66,677,389	\$66,155,068	\$522,321	0.8%
4	9/24/2011	\$49,777,138	\$48,471,310	\$1,305,828	2.7%	\$17,504,800	\$15,623,813	\$1,880,987	12.0%	\$67,281,938	\$64,095,123	\$3,186,815	5.0%
5	10/1/2011	\$51,040,274	\$50,145,138	\$895,136	1.8%	\$18,653,100	\$16,453,939	\$2,199,161	13.4%	\$69,693,374	\$66,599,077	\$3,094,297	4.6%
6	10/8/2011	\$53,715,157	\$50,918,591	\$2,796,566	5.5%	\$17,225,680	\$16,974,963	\$250,717	1.5%	\$70,940,837	\$67,893,554	\$3,047,283	4.5%
7	10/15/2011	\$51,942,121	\$49,096,011	\$2,846,110	5.8%	\$17,854,980	\$16,661,904	\$1,193,077	7.2%	\$69,797,101	\$65,757,915	\$4,039,187	6.1%
8	10/22/2011	\$52,837,769	\$50,158,946	\$2,678,823	5.3%	\$19,558,519	\$17,374,460	\$2,184,060	12.6%	\$72,396,288	\$67,533,406	\$4,862,883	7.2%
9	10/29/2011	\$52,206,644	\$49,775,287	\$2,431,357	4.9%	\$21,504,565	\$18,402,209	\$3,102,356	16.9%	\$73,711,209	\$68,177,496	\$5,533,713	8.1%
10	11/5/2011	\$56,265,310	\$53,337,848	\$2,927,462	5.5%	\$20,870,086	\$17,321,908	\$3,548,179	20.5%	\$77,135,396	\$70,659,756	\$6,475,641	9.2%
11	11/12/2011	\$55,682,645	\$52,285,479	\$3,397,166	6.5%	\$17,862,404	\$16,388,690	\$1,473,714	9.0%	\$73,545,049	\$68,674,169	\$4,870,880	7.1%
12	11/19/2011	\$54,978,079	\$52,424,036	\$2,554,043	4.9%	\$17,879,985	\$16,138,022	\$1,741,963	10.8%	\$72,858,064	\$68,562,058	\$4,296,006	6.3%
13	11/26/2011	\$53,942,448	\$51,262,518	\$2,679,930	5.2%	\$16,877,145	\$15,967,075	\$910,070	5.7%	\$70,819,593	\$67,229,593	\$3,590,000	5.3%
14	12/3/2011	\$57,153,469	\$56,385,259	\$768,210	1.4%	\$18,298,636	\$17,553,175	\$745,461	4.2%	\$75,452,105	\$73,938,434	\$1,513,671	2.0%
15	12/10/2011	\$55,318,284	\$56,540,048	(\$1,221,764)	-2.2%	\$19,033,326	\$17,703,352	\$1,329,975	7.5%	\$74,351,610	\$74,243,400	\$108,211	0.1%
16	12/17/2011	\$58,612,629	\$57,699,991	\$912,638	1.6%	\$20,045,279	\$18,465,282	\$1,579,997	8.6%	\$78,657,908	\$76,165,273	\$2,492,635	3.3%
17	12/24/2011	\$60,628,256	\$59,800,480	\$827,776	1.4%	\$22,572,986	\$19,635,771	\$2,937,215	15.0%	\$83,201,242	\$79,436,251	\$3,764,991	4.7%
18	12/31/2011	\$63,065,007	\$61,423,121	\$1,641,886	2.7%	\$19,948,521	\$26,122,257	(\$6,173,736)	-23.6%	\$83,013,528	\$87,545,378	(\$4,531,850)	-5.2%
19	1/7/2012	\$60,479,896	\$60,976,653	(\$496,757)	-0.8%	\$17,331,888	\$33,521,570	(\$16,189,682)	-48.3%	\$77,811,784	\$94,498,223	(\$16,686,439)	-17.7%
20	1/14/2012	\$57,689,526	\$50,099,433	\$7,590,093	15.2%	\$17,568,732	\$17,114,637	\$454,096	2.7%	\$75,258,258	\$67,214,070	\$8,044,189	12.0%
21	1/21/2012		\$53,143,646				\$18,091,208				\$71,234,854		
22	1/28/2012		\$54,096,128				\$17,446,156				\$71,542,284		
23	2/4/2012		\$53,433,592				\$17,388,581				\$70,822,173		
24	2/11/2012		\$60,277,094				\$18,233,038				\$78,510,132		
25	2/18/2012		\$61,536,763				\$19,387,518				\$80,924,281		
26	2/25/2012		\$59,046,203				\$20,054,404				\$79,100,607		
27	3/3/2012		\$60,537,060				\$19,478,807				\$80,015,867		
28	3/10/2012		\$59,997,361				\$19,601,658				\$79,599,019		
29	3/17/2012		\$57,835,554				\$21,189,563				\$79,025,117		
30	3/24/2012		\$57,911,940				\$29,729,651				\$87,641,591		
31	3/31/2012		\$60,407,139				\$19,519,264				\$79,926,403		
32	4/7/2012		\$60,704,285				\$19,455,317				\$80,159,602		
33	4/14/2012		\$57,663,398				\$17,866,867				\$75,530,265		
34	4/21/2012		\$56,740,216				\$17,429,326				\$74,169,542		
35	4/28/2012		\$58,042,011				\$17,104,548				\$75,146,559		
36	5/5/2012		\$66,509,159				\$17,744,833				\$84,253,992		
37	5/12/2012		\$53,769,716				\$17,783,942				\$71,553,658		
38	5/19/2012		\$53,704,228				\$18,623,882				\$72,328,110		
39	5/26/2012		\$52,310,134				\$19,115,921				\$71,426,055		
40	6/2/2012		\$53,256,725				\$18,462,603				\$71,719,328		
41	6/9/2012		\$54,293,614				\$17,213,019				\$71,506,633		
42	6/16/2012		\$52,688,230				\$17,534,413				\$70,222,643		

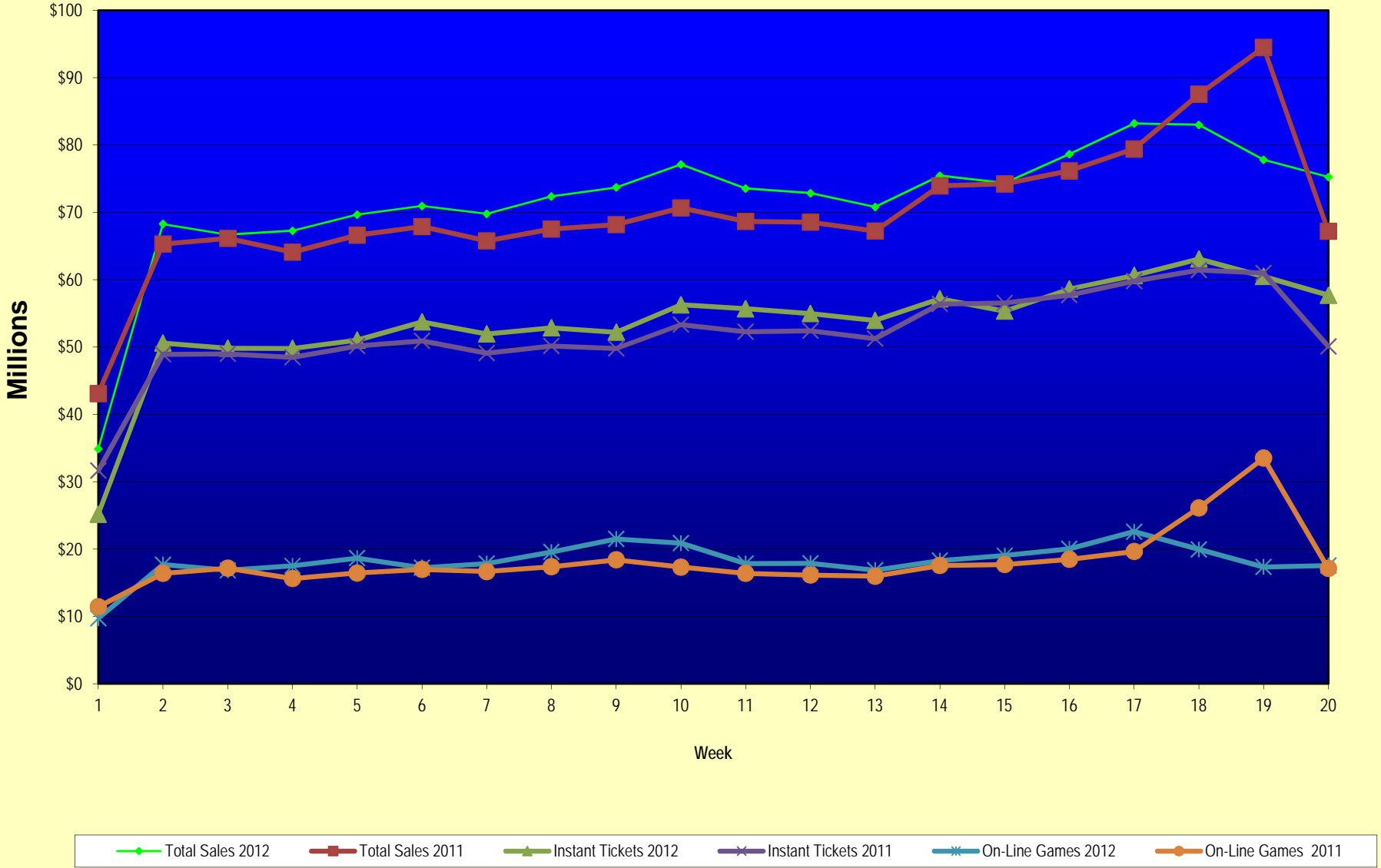
Note: Week 1 is not a full week of sales as this report is prepared on a Fiscal Year basis.

Texas Lottery Commission
Fiscal Year Over Year Change in Sales
Unaudited
FY 2012 Compared to FY 2011

Week	FY 2012 Week Ending	INSTANT TICKETS				ON-LINE GAMES				TOTAL SALES			
		FY 2012	FY 2011	Difference	% change - Cumulative Sales	FY 2012	FY 2011	Difference	% change - Cumulative Sales	FY 2012	FY 2011	Difference	% change - Cumulative Sales
43	6/23/2012		\$53,174,595				\$17,086,937				\$70,261,532		
44	6/30/2012		\$53,687,509				\$18,406,785				\$72,094,294		
45	7/7/2012		\$53,054,685				\$16,211,989				\$69,266,674		
46	7/14/2012		\$51,161,290				\$16,945,733				\$68,107,023		
47	7/21/2012		\$50,807,750				\$17,362,213				\$68,169,963		
48	7/28/2012		\$51,277,179				\$18,870,764				\$70,147,943		
49	8/4/2012		\$53,320,489				\$20,922,034				\$74,242,523		
50	8/11/2012		\$50,914,022				\$19,467,124				\$70,381,146		
51	8/18/2012		\$49,905,898				\$17,419,045				\$67,324,943		
52	8/25/2012		\$49,424,242				\$16,837,474				\$66,261,716		
	8/31/2012		\$27,274,804				\$8,600,118				\$35,874,922		
Total thru Current Week		\$1,070,907,964	\$1,040,360,021	\$30,547,943	2.9%	\$364,819,369	\$362,418,726	\$2,400,643	0.7%	\$1,435,727,333	\$1,402,778,747	\$32,948,586	2.3%
Fiscal Year Total		\$1,070,907,964	\$2,842,266,680			\$364,819,369	\$969,003,455			\$1,435,727,333	\$3,811,270,135		

** FY 2011 includes 4 days; FY 2012 includes 3 days

Texas Lottery Commission Fiscal Year Over Year Change in Sales



Note: Week 1 is not a full week of sales as this report is prepared on a Fiscal Year basis.

Texas Lottery Commission
Instant Tickets by Price Point
Sales, Prize Expense, Sales Contribution and Payout Percentage With Year Over Year Changes
Unaudited

Fiscal Year	Price Point	# of Active Games	FY Sales	% of Instant Ticket Sales	Year over Year Change in Sales	FY Prize Expense	Year over Year Change in Prize Expense	FY Sales Contribution	Year over Year Change in Contribution	Average Prize Payout %	Year over Year Change in Payout %
2011	\$1.00	27	77,092,463	7.4%		47,563,461		29,529,002		61.7%	2.7%
thru	\$2.00	26	148,750,804	14.3%		97,318,536		51,432,268		65.4%	0.4%
1/15/2011	\$3.00	17	128,128,832	12.3%		84,102,102		44,026,730		65.6%	0.1%
	\$5.00	36	335,898,670	32.3%		228,659,968		107,238,702		68.1%	0.1%
	\$7.00	7	45,401,972	4.4%		30,862,916		14,539,056		68.0%	0.0%
	\$10.00	12	133,926,950	12.9%		94,667,259		39,259,691		70.7%	1.1%
	\$20.00	5	134,951,580	13.0%		100,117,483		34,834,097		74.2%	1.4%
	\$50.00	2	36,208,750	3.5%		28,112,214		8,096,536		77.6%	4.2%
Total		132	\$1,040,360,021			\$711,403,940		\$328,956,081		68.4%	0.9%
2012	\$1.00	26	81,414,289	7.6%		50,001,478		31,412,811		61.4%	1.1%
thru	\$2.00	27	147,859,514	13.8%		96,130,226		51,729,288		65.0%	-0.8%
1/14/2012	\$3.00	15	131,834,763	12.3%		86,470,801		45,363,962		65.6%	0.0%
	\$5.00	35	339,162,115	31.7%		230,869,800		108,292,315		68.1%	0.2%
	\$7.00	4	18,180,463	1.7%		12,362,596		5,817,867		68.0%	0.0%
	\$10.00	15	169,450,850	15.8%		119,314,645		50,136,205		70.4%	-0.8%
	\$20.00	5	148,935,520	13.9%		111,100,597		37,834,923		74.6%	-0.1%
	\$50.00	2	34,070,450	3.2%		26,462,105		7,608,345		77.7%	0.1%
Total		129	\$1,070,907,964			\$732,712,248		\$338,195,716		68.4%	-0.1%
Variance	\$1.00	-1	4,321,826		5.6%	2,438,018	5.1%	1,883,808	6.4%	-0.28%	
2012 to	\$2.00	1	-891,290		-0.6%	-1,188,311	-1.2%	297,021	0.6%	-0.41%	
2011	\$3.00	-2	3,705,931		2.9%	2,368,699	2.8%	1,337,232	3.0%	-0.05%	
	\$5.00	-1	3,263,445		1.0%	2,209,832	1.0%	1,053,613	1.0%	0.00%	
	\$7.00	-3	-27,221,509		-60.0%	-18,500,320	-59.9%	-8,721,189	-60.0%	0.02%	
	\$10.00	3	35,523,900		26.5%	24,647,386	26.0%	10,876,514	27.7%	-0.27%	
	\$20.00	0	13,983,940		10.4%	10,983,114	11.0%	3,000,826	8.6%	0.41%	
	\$50.00	0	-2,138,300		-5.9%	-1,650,109	-5.9%	-488,191	-6.0%	0.03%	
Total		-3	\$30,547,943		2.9%	\$21,308,309	3.0%	\$9,239,634	2.8%	0.04%	

Notes - Instant Ticket Variances

Texas Lottery Commission
Instant Tickets by Price Point
Sales, Prize Expense, Sales Contribution and Payout Percentage With Year Over Year Changes
 Unaudited

		FY 2012		FY 2011		Difference
Sales	\$1 - \$7	\$718,451,144		\$735,272,741		-\$16,821,597
Prize Exp.	\$1 - \$7	\$475,834,901		\$488,506,983		-\$12,672,082
Sales Cont.	\$1 - \$7	\$242,616,243		\$246,765,758		-\$4,149,515
Prize Exp. %	\$1 - \$7	66.2%		66.4%		-0.2%
		FY 2012		FY 2011		Difference
Sales	\$10 - \$50	\$352,456,820		\$305,087,280		\$47,369,540
Prize Exp.	\$10 - \$50	\$256,877,347		\$222,896,956		\$33,980,391
Sales Cont.	\$10 - \$50	\$95,579,473		\$82,190,324		\$13,389,149
Prize Exp. %	\$10 - \$50	72.9%		73.1%		-0.2%
		FY 2012		FY 2011		Difference
Sales	Instant	\$1,070,907,964		\$1,040,360,021		\$30,547,943
Prize Exp.	Instant	\$732,712,248		\$711,403,940		\$21,308,309
Sales Cont.	Instant	\$338,195,716		\$328,956,081		\$9,239,634
Prize Exp. %	Instant	68.4%		68.4%		0.0%

		FY 2012		FY 2011		Difference
Sales	\$1 - \$10	\$887,901,994		\$869,199,691		\$18,702,303
Prize Exp.	\$1 - \$10	\$595,149,546		\$583,174,242		\$11,975,304
Sales Cont.	\$1 - \$10	\$292,752,448		\$286,025,449		\$6,727,000
Prize Exp. %	\$1 - \$10	67.0%		67.1%		-0.1%
		FY 2012		FY 2011		Difference
Sales	\$20 - \$50	\$183,005,970		\$171,160,330		\$11,845,640
Prize Exp.	\$20 - \$50	\$137,562,702		\$128,229,697		\$9,333,005
Sales Cont.	\$20 - \$50	\$45,443,268		\$42,930,633		\$2,512,635
Prize Exp. %	\$20 - \$50	75.2%		74.9%		0.3%
		FY 2012		FY 2011		Difference
Sales	Instant	\$1,070,907,964		\$1,040,360,021		\$30,547,943
Prize Exp.	Instant	\$732,712,248		\$711,403,940		\$21,308,309
Sales Cont.	Instant	\$338,195,716		\$328,956,081		\$9,239,634
Prize Exp. %	Instant	68.4%		68.4%		0.0%

Texas Lottery Commission
Weekly Sales Summary
& Comparison to Previous Week
 Unaudited

	Week Ending 01/14/2012		Week Ending 01/07/2012			
	<u>THIS WEEK</u>	% of Sales	<u>LAST WEEK</u>	% of Sales	<u>\$ change</u>	<u>% change</u>
Total Sales	<u>\$75,258,258</u>		<u>\$77,811,784</u>		<u>-\$2,553,526</u>	-3.28%
Instant Tickets	<u>\$57,689,526</u>	76.7%	<u>\$60,479,896</u>	77.7%	<u>-\$2,790,370</u>	-4.61%
Lotto	\$3,259,338	4.3%	\$3,193,532	4.1%	\$65,806	2.06%
Pick 3	\$5,061,130	6.7%	\$5,246,112	6.7%	-\$184,983	-3.53%
Pick 3 Sum It Up	\$103,687	0.1%	\$108,060	0.1%	-\$4,373	-4.05%
Cash Five	\$1,270,289	1.7%	\$1,281,653	1.6%	-\$11,364	-0.89%
Texas Two Step	\$1,059,875	1.4%	\$1,135,472	1.5%	-\$75,597	-6.66%
Mega Millions	\$2,542,675	3.4%	\$2,298,815	3.0%	\$243,860	10.61%
Megaplier	\$587,013	0.8%	\$550,191	0.7%	\$36,822	6.69%
Daily 4	\$1,229,792	1.6%	\$1,240,736	1.6%	-\$10,944	-0.88%
Daily 4 Sum It Up	\$87,637	0.1%	\$90,116	0.1%	-\$2,479	-2.75%
Powerball	\$1,921,683	2.6%	\$1,763,484	2.3%	\$158,199	8.97%
Power Play	\$445,614	0.6%	\$423,718	0.5%	\$21,896	5.17%
Total Online Sales	<u>\$17,568,732</u>		<u>\$17,331,888</u>		<u>\$236,844</u>	1.37%

Totals may not sum due to rounding.

Texas Lottery Commission
Weekly Sales Summary
Unaudited

INSTANT TICKETS
TOP TEN SELLING GAMES

For the Week Ending : 01/14/2012

Rank	Price Point	Game	Sales (Millions)
1	\$ 5	MONEY MULTIPLIER	\$ 3.775
2	\$ 20	\$500,000,000 FRENZY	\$ 3.124
3	\$ 50	CASINO ACTION	\$ 2.993
4	\$ 10	BIG MONEY	\$ 2.972
5	\$ 5	GROOVY CASH	\$ 2.144
6	\$ 3	BONUS CASHWORD	\$ 2.019
7	\$ 20	\$500,000,000 BLOCKBUSTER	\$ 1.983
8	\$ 10	TEXAS LOTTERY BLACK, SERIES 3	\$ 1.690
9	\$ 5	FUNKY 5'S	\$ 1.636
10	\$ 3	LOTERIA	\$ 1.604

Texas Lottery Commission
Prize Payout Tracking Report
Unaudited

Through Week Ending 01/14/2012

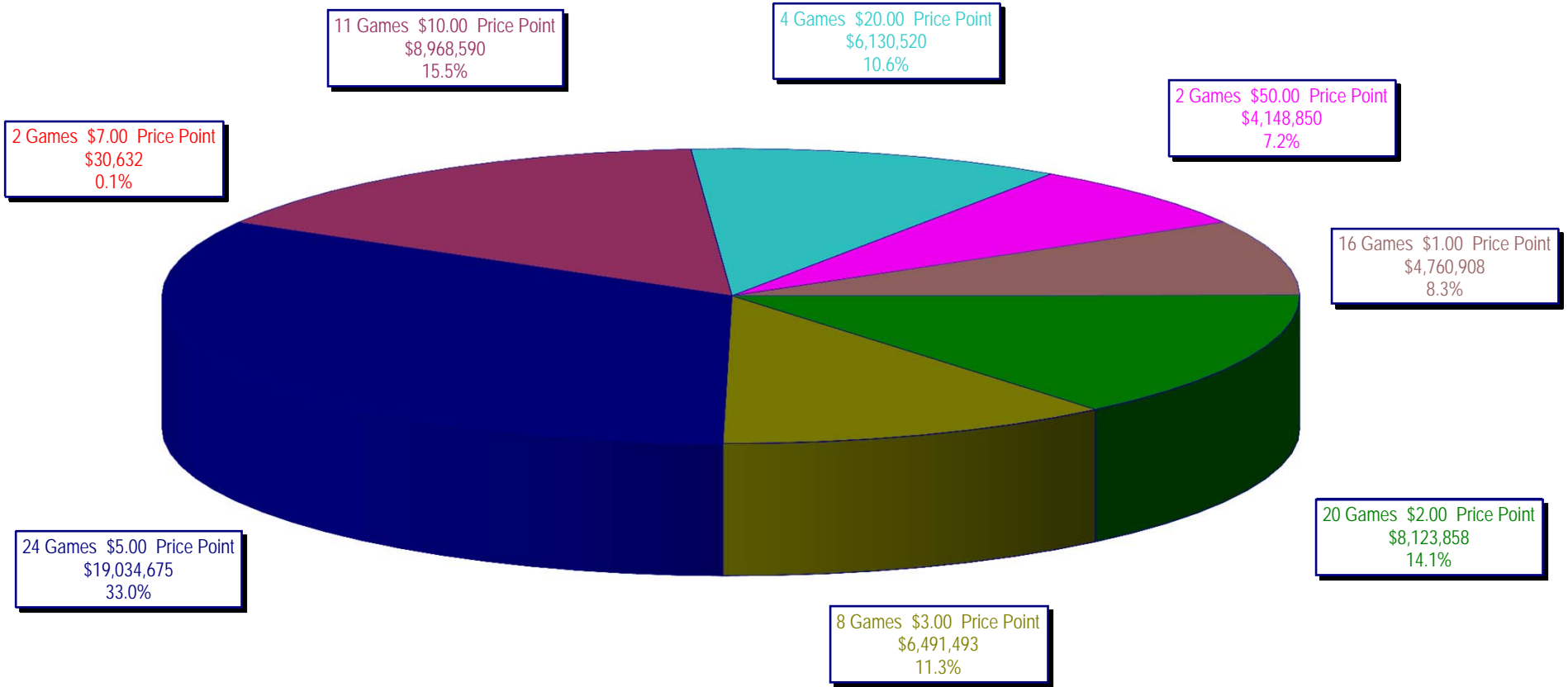
On-Line Sales

		FY Sales Through Week Ending 1/14/2012		FY Prize Expense Through Week Ending 1/14/2012	Actual* Prize Payout	Base Payout (Prize Pool)
Lotto	\$	65,397,632	\$	40,229,123	61.51%	50.00%
Pick 3		98,772,300		44,773,940	45.33%	50.00%
Pick 3 Sum It Up		2,010,616		946,956	47.10%	50.00%
Cash Five		24,095,411		12,448,566	51.66%	50.00%
Texas Two Step		22,686,317		11,337,589	49.98%	50.00%
Mega Millions		58,205,559		28,704,008	49.31%	50.00%**
Megaplier		12,825,041		6,778,567	52.85%	N/A
Daily 4		23,335,143		10,672,875	45.74%	50.00%
Daily 4 Sum It Up		1,725,574		674,954	39.11%	50.00%
Powerball		45,688,892		22,879,828	50.08%	50.00%**
Power Play		10,076,884		5,519,542	54.77%	N/A
Totals	\$	364,819,369	\$	184,965,947	50.70%	

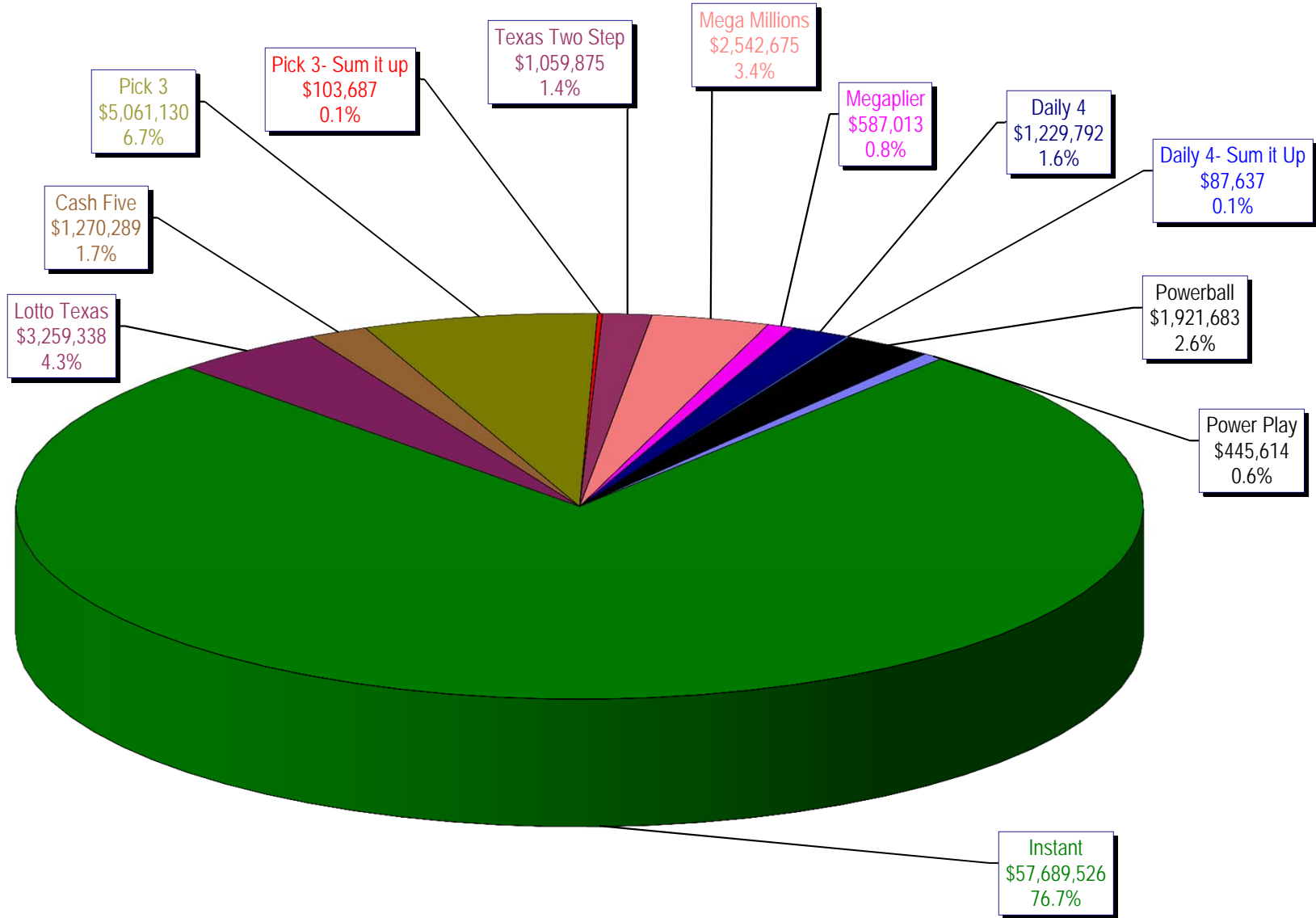
* Before Unclaimed Prizes

** Estimated; depends on # of guaranteed prizes won in Texas

Texas Lottery Commission
Instant Ticket Sales
For the Week Ending 01/14/12
(Unaudited)



**Texas Lottery Commission
All Game Sales
For the Week Ending 01/14/12
(Unaudited)**



Texas Lottery Commission - Weekly Sales Summary for FY 2012 (Unaudited)

Week Ended	Instant Games	New Games & Dates	Lotto Texas	Jackpot W	S	Pick 3	Pick 3 Sum It Up	Cash Five	Texas Two Step	Jackpot M	TH	Mega Millions	Jackpot T	F	Megaplier	Daily 4	Daily 4 Sum It Up	Powerball	Jackpot W	S	Power Play	Total	Per Cap.
9/3/2011	52,421,985	1340 (\$1,N); 1310 (\$2, N) - 08/29/11	3,710,974	23	24	5,228,940	100,997	1,239,134	989,988	225	300	2,248,664	21	29	539,246	1,221,178	93,318	2,401,555	75	91	530,686	70,726,664	2.81
9/10/2011	50,591,068	1360 (\$3, N) - 09/05/11	3,329,350	25	4	5,103,026	99,259	1,198,563	935,771	450	200	2,387,766	37	44	557,225	1,180,505	88,443	2,295,315	107	20	506,631	68,272,921	2.71
9/17/2011	49,835,063	0	3,031,798	5	6	4,953,079	100,990	1,210,562	961,592	225	300	2,801,526	54	65	626,459	1,125,230	83,532	1,560,522	25	20	387,037	66,677,389	2.64
9/24/2011	49,777,138	1362(\$1, N); 1363(\$5,N); 1364(\$5,N) - 09/19/11	3,083,973	7	8	4,819,453	97,999	1,200,444	1,283,472	450	600	3,206,022	75	86	692,909	1,092,294	82,198	1,561,655	25	30	384,383	67,281,938	2.67
10/1/2011	51,040,274	1365(\$2,N) - 09/26/11	3,196,730	9	10	4,846,896	97,026	1,215,715	1,146,613	800	200	4,033,330	96	113	830,660	1,096,271	83,993	1,693,809	37	47	412,058	69,693,374	2.76
10/8/2011	53,715,157	1366(\$1,N) - 10/03/11	3,231,892	11	12	5,064,771	102,919	1,252,733	1,004,251	225	300	2,176,684	12	14	527,777	1,188,636	92,825	2,103,034	58	71	480,159	70,940,837	2.81
10/15/2011	51,942,121	1367 (\$7, N) - 10/10/11	3,230,925	13	14	4,776,985	99,008	1,214,385	1,337,436	450	625	2,260,036	22	30	542,787	1,132,415	84,772	2,613,215	86	105	563,017	69,797,101	2.77
10/22/2011	52,837,769	1369 (\$1, N); 1370 (\$5, N) - 10/17/11	3,250,317	15	16	4,784,201	98,306	1,202,768	1,887,302	825	1,050	2,386,255	39	48	561,705	1,130,353	83,722	3,477,867	124	148	695,724	72,396,288	2.87
10/29/2011	52,206,644	1371 (\$2, N) - 10/24/11	3,302,201	17	18	4,685,786	95,887	1,186,987	2,055,399	1,300	1,550	2,592,752	57	67	596,631	1,107,441	82,921	4,895,300	173	203	903,261	73,711,209	2.92
11/5/2011	56,265,310	1373 (\$10, N) - 10/31/11	3,570,825	19	20	5,165,835	105,793	1,240,514	910,036	200	200	2,497,308	78	12	583,481	1,222,706	92,619	4,617,172	245	20	863,799	77,135,396	3.06
11/12/2011	55,682,645	1375 (\$3, N); 1374 (\$1, N) - 11/07/11	3,673,137	21	22	5,298,645	109,575	1,268,630	961,349	225	200	2,362,698	15	22	552,133	1,235,272	92,025	1,861,697	25	35	447,243	73,545,049	2.92
11/19/2011	54,978,079	1376(\$2, N); 1377 (\$5, N) - 11/14/11	3,575,231	23	24	5,216,095	106,956	1,246,366	1,059,355	225	325	2,300,050	30	40	550,825	1,224,365	89,978	2,033,222	46	60	477,542	72,858,064	2.89
11/26/2011	53,942,448	1372 (\$5, N) - 11/21/11	3,499,908	25	26	4,943,420	100,352	1,179,174	998,175	500	200	2,377,399	47	55	555,760	1,215,090	90,416	1,527,546	20	25	389,905	70,819,593	2.81
12/3/2011	57,153,469	0	3,744,456	27	28	5,267,602	108,544	1,264,649	938,225	225	200	2,830,996	64	75	636,924	1,278,857	95,379	1,708,763	31	40	424,242	75,452,105	2.99
12/10/2011	55,318,284	1378 (\$1, N); 1322 (\$5, N) - 12/5/11; 1389 (\$1, N) - 12/6/11	3,666,072	29	30	5,168,509	106,265	1,243,957	1,030,979	225	325	3,462,326	87	100	736,281	1,235,834	89,131	1,850,570	52	67	443,403	74,351,610	2.95
12/17/2011	58,612,629	1383 (\$3,N) - 12/12/11	2,963,151	4	5	5,096,413	103,606	1,257,263	1,339,991	475	650	4,412,520	116	135	882,759	1,240,640	89,229	2,163,468	78	91	496,239	78,657,908	3.12
12/24/2011	60,628,256	1379 (\$1, N); 1317 (\$2, N); 1380 (\$5, N) - 12/19/11	3,265,301	6	7	5,257,800	105,568	1,269,335	943,509	200	225	5,729,832	152	173	1,095,360	1,263,815	88,757	2,933,837	104	125	619,872	83,201,242	3.30
12/31/2011	63,065,007	0	3,368,593	8	9	5,211,663	107,395	1,275,257	1,200,536	325	450	4,358,985	206	12	878,865	1,244,035	88,079	1,788,226	20	25	426,888	83,013,528	3.29
1/7/2012	60,479,896	1381 (\$5,N); 1277 (\$50,N) - 1/3/12; 1429 (\$5,N); 1401 (\$10, N) - 1/4/12	3,193,532	10	11	5,246,112	108,060	1,281,653	1,135,472	625	200	2,298,815	15	25	550,191	1,240,736	90,116	1,763,484	30	44	423,718	77,811,784	3.09
1/14/2012	57,689,526	1382 (\$2,N); 1232 (\$10, N) - 1/9/12	3,259,338	12	13	5,061,130	103,687	1,270,289	1,059,875	225	350	2,542,675	33	42	587,013	1,229,792	87,637	1,921,683	54	66	445,614	75,258,258	2.98
weekly change	-4.6%		2.1%			-3.5%	-4.0%	-0.9%	-6.7%			10.6%			6.7%	-0.9%	-2.8%	9.0%			5.2%		-3.3%
	SALES		SALES			SALES	SALES	SALES	SALES			SALES			SALES	SALES	SALES	SALES			SALES	SALES	% of Sales
Startup to date	42,946,266,166		10,973,403,691			4,226,132,621	25,313,949	2,345,004,072	600,520,784			1,543,637,284			352,960,212	224,337,831	24,695,014	202,080,776			46,340,229	63,718,826,600	100.0%
Calendar Year to date	118,169,422		6,452,870			10,307,242	211,747	2,551,942	2,195,347			4,841,490			1,137,204	2,470,528	177,752	3,685,167			869,332	153,070,042	100.0%
Fiscal Year to date 2012	1,070,907,964		65,397,632			98,772,300	2,010,616	24,095,411	22,686,317			58,205,559			12,825,041	23,335,143	1,725,574	45,688,892			10,076,884	1,435,727,333	100.0%