



*WEEKLY SALES SUMMARY*

Unaudited

**Week Ending: 1/14/2017**

Texas Lottery Commission  
Fiscal Year to Date Sales Comparison  
Unaudited

Through the Week Ending 1/14/2017 (20 Weeks)

Sales by Game	FY 2015 *	FY 2016 **	FY 2017	\$ Change		% Change	
				FY 2017 to FY 2015	FY 2017 to FY 2016	FY 2017 to FY 2015	FY 2017 to FY 2016
Scratch Tickets	\$ 1,271,728,340	\$ 1,340,720,674	\$ 1,388,963,491	\$ 117,235,151	\$ 48,242,817	9.2%	3.6%
Lotto Texas	46,423,424	50,248,600	41,373,309	-5,050,115	-8,875,291	-10.9%	-17.7%
Lotto Extra	7,031,601	8,472,122	7,940,408	908,807	-531,714	12.9%	-6.3%
Pick 3	95,199,398	95,371,998	92,172,213	-3,027,185	-3,199,785	-3.2%	-3.4%
Pick 3 Sum It Up	1,819,581	1,912,028	1,750,962	-68,619	-161,066	-3.8%	-8.4%
Cash Five	19,006,008	17,594,819	16,401,304	-2,604,704	-1,193,515	-13.7%	-6.8%
Texas Two Step	20,430,286	19,560,495	20,334,468	-95,818	773,973	-0.5%	4.0%
Mega Millions	66,824,003	51,241,817	40,280,878	-26,543,125	-10,960,939	-39.7%	-21.4%
Megaplier	14,978,921	12,663,075	10,976,495	-4,002,426	-1,686,580	-26.7%	-13.3%
Daily 4	32,217,719	33,037,320	34,841,006	2,623,287	1,803,686	8.1%	5.5%
Daily 4 Sum It Up	1,917,615	1,718,847	1,859,761	-57,854	140,914	-3.0%	8.2%
Powerball	66,661,578	288,033,623	81,661,593	15,000,015	-206,372,030	22.5%	-71.6%
Power Play	8,737,644	29,899,328	11,555,873	2,818,229	-18,343,455	32.3%	-61.4%
All or Nothing	14,758,054	11,804,824	10,827,346	-3,930,708	-977,478	-26.6%	-8.3%
Monopoly	1 2,656,530	-	-	-2,656,530	-	-100.0%	-
Texas Triple Chance	-	10,584,985	5,880,908	5,880,908	-4,704,077	-	-44.4%
<b>Total</b>	<b>\$ 1,670,390,701</b>	<b>\$ 1,972,864,554</b>	<b>\$ 1,766,820,014</b>	<b>\$ 96,429,314</b>	<b>\$ -206,044,540</b>	<b>5.8%</b>	<b>-10.4%</b>

\* 3 extra days

\*\* 2 extra days

1 Monopoly sales were suspended after draw on 12/12/14

Texas Lottery Commission  
Fiscal Year to Date Cumulative Average Sales Comparison  
Unaudited

Through the Week Ending 1/14/2017 (20 Weeks)

Sales by Game	FY 2015	FY 2016	FY 2017
Scratch Tickets	\$ 9,149,125	\$ 9,715,367	\$ 10,212,967
Lotto Texas	333,981	364,120	304,216
Lotto Extra	50,587	61,392	58,385
Pick 3	684,888	691,101	677,737
Pick 3 Sum It Up	13,091	13,855	12,875
Cash Five	136,734	127,499	120,598
Texas Two Step	146,980	141,743	149,518
Mega Millions	480,748	371,318	296,183
Megaplier	107,762	91,761	80,710
Daily 4	231,782	239,401	256,184
Daily 4 Sum It Up	13,796	12,455	13,675
Powerball	479,580	2,087,200	600,453
Power Play	62,861	216,662	84,970
All or Nothing	106,173	85,542	79,613
Monopoly	** 48,301	-	-
Texas Triple Chance	- *	94,509	43,242
<b>Total</b>	<b>\$ <u>12,046,388</u></b>	<b>\$ <u>14,313,926</u></b>	<b>\$ <u>12,991,324</u></b>

thru 1/17/2015

thru 1/16/2016

thru 1/14/2017

139 days

138 days

136 days

\*\* 55 days

\* 112 days

Texas Lottery Commission  
Fiscal Year Over Year Change in Sales  
Unaudited  
FY 2017 Compared to FY 2016

			SCRATCH TICKETS				DRAW GAMES				TOTAL SALES			
FY 2017			FY 2017	FY 2016	Difference	% change - Cumulative Sales	FY 2017	FY 2016	Difference	% change - Cumulative Sales	FY 2017	FY 2016	Difference	% change - Cumulative Sales
Week	Week Ending													
1	9/3/2016 *		\$32,980,266	\$49,534,249	(\$16,553,983)	-33.4%	\$10,218,656	\$17,091,724	(\$6,873,068)	-40.2%	\$43,198,922	\$66,625,973	(\$23,427,051)	-35.2%
2	9/10/2016		\$65,952,418	\$61,566,291	\$4,386,127	7.1%	\$19,635,377	\$20,630,922	(\$995,545)	-4.8%	\$85,587,795	\$82,197,213	\$3,390,583	4.1%
3	9/17/2016		\$66,196,270	\$63,530,657	\$2,665,613	4.2%	\$20,915,290	\$20,327,253	\$588,037	2.9%	\$87,111,560	\$83,857,910	\$3,253,650	3.9%
4	9/24/2016		\$64,383,005	\$61,731,400	\$2,651,605	4.3%	\$17,451,165	\$22,252,290	(\$4,801,125)	-21.6%	\$81,834,170	\$83,983,690	(\$2,149,520)	-2.6%
5	10/1/2016		\$67,349,951	\$67,048,415	\$301,536	0.4%	\$17,519,852	\$25,436,791	(\$7,916,939)	-31.1%	\$84,869,803	\$92,485,206	(\$7,615,403)	-8.2%
6	10/8/2016		\$71,598,690	\$66,049,706	\$5,548,984	8.4%	\$18,211,107	\$18,138,977	\$72,130	0.4%	\$89,809,797	\$84,188,683	\$5,621,114	6.7%
7	10/15/2016		\$69,444,762	\$65,073,593	\$4,371,169	6.7%	\$18,075,261	\$17,776,414	\$298,847	1.7%	\$87,520,023	\$82,850,007	\$4,670,016	5.6%
8	10/22/2016		\$69,317,066	\$64,087,437	\$5,229,629	8.2%	\$18,422,336	\$18,450,464	(\$28,128)	-0.2%	\$87,739,402	\$82,537,901	\$5,201,501	6.3%
9	10/29/2016		\$69,729,599	\$66,025,374	\$3,704,225	5.6%	\$18,535,248	\$19,568,150	(\$1,032,902)	-5.3%	\$88,264,847	\$85,593,524	\$2,671,324	3.1%
10	11/5/2016		\$73,451,702	\$68,137,192	\$5,314,510	7.8%	\$20,151,939	\$20,398,351	(\$246,413)	-1.2%	\$93,603,641	\$88,535,543	\$5,068,098	5.7%
11	11/12/2016		\$70,998,320	\$65,449,428	\$5,548,892	8.5%	\$19,925,460	\$20,169,382	(\$243,923)	-1.2%	\$90,923,780	\$85,618,810	\$5,304,970	6.2%
12	11/19/2016		\$75,265,196	\$68,364,421	\$6,900,775	10.1%	\$21,424,637	\$17,174,606	\$4,250,031	24.7%	\$96,689,833	\$85,539,027	\$11,150,806	13.0%
13	11/26/2016		\$68,983,157	\$61,091,628	\$7,891,529	12.9%	\$24,223,331	\$17,168,993	\$7,054,338	41.1%	\$93,206,488	\$78,260,621	\$14,945,867	19.1%
14	12/3/2016		\$72,688,514	\$67,830,827	\$4,857,687	7.2%	\$17,653,328	\$19,252,418	(\$1,599,090)	-8.3%	\$90,341,842	\$87,083,245	\$3,258,597	3.7%
15	12/10/2016		\$71,676,549	\$68,324,452	\$3,352,097	4.9%	\$18,150,590	\$19,529,408	(\$1,378,819)	-7.1%	\$89,827,139	\$87,853,860	\$1,973,279	2.2%
16	12/17/2016		\$73,909,726	\$71,041,258	\$2,868,468	4.0%	\$19,814,333	\$20,824,840	(\$1,010,507)	-4.9%	\$93,724,059	\$91,866,098	\$1,857,962	2.0%
17	12/24/2016		\$77,369,179	\$78,125,965	(\$756,786)	-1.0%	\$19,276,415	\$22,586,417	(\$3,310,002)	-14.7%	\$96,645,594	\$100,712,382	(\$4,066,788)	-4.0%
18	12/31/2016		\$80,868,854	\$76,712,975	\$4,155,879	5.4%	\$19,289,161	\$27,972,880	(\$8,683,720)	-31.0%	\$100,158,015	\$104,685,855	(\$4,527,841)	-4.3%
19	1/7/2017		\$73,328,624	\$77,136,541	(\$3,807,917)	-4.9%	\$18,611,644	\$127,289,478	(\$108,677,835)	-85.4%	\$91,940,268	\$204,426,019	(\$112,485,752)	-55.0%
20	1/14/2017		\$73,471,643	\$73,858,865	(\$387,222)	-0.5%	\$20,351,397	\$140,104,126	(\$119,752,729)	-85.5%	\$93,823,040	\$213,962,991	(\$120,139,951)	-56.1%
21	1/21/2017			\$70,665,700				\$20,781,745				\$91,447,445		
22	1/28/2017			\$71,051,685				\$20,433,401				\$91,485,086		
23	2/4/2017			\$78,458,428				\$21,274,800				\$99,733,228		
24	2/11/2017			\$80,754,850				\$21,391,919				\$102,146,769		
25	2/18/2017			\$80,078,271				\$21,911,382				\$101,989,653		
26	2/25/2017			\$78,832,217				\$22,823,086				\$101,655,303		
27	3/4/2017			\$80,019,524				\$23,146,906				\$103,166,430		
28	3/11/2017			\$78,524,214				\$19,311,625				\$97,835,839		
29	3/18/2017			\$75,446,960				\$18,001,000				\$93,447,960		
30	3/25/2017			\$75,293,759				\$18,553,964				\$93,847,723		
31	4/1/2017			\$79,316,221				\$19,482,563				\$98,798,784		
32	4/8/2017			\$74,560,898				\$20,100,629				\$94,661,527		
33	4/15/2017			\$74,056,586				\$20,677,413				\$94,733,999		
34	4/22/2017			\$73,110,080				\$20,313,339				\$93,423,419		
35	4/29/2017			\$73,448,019				\$22,666,626				\$96,114,645		
36	5/6/2017			\$77,593,399				\$33,262,968				\$110,856,367		
37	5/13/2017			\$75,263,676				\$20,250,149				\$95,513,825		
38	5/20/2017			\$74,274,808				\$19,605,983				\$93,880,791		
39	5/27/2017			\$71,562,728				\$20,150,232				\$91,712,960		
40	6/3/2017			\$73,085,109				\$21,067,550				\$94,152,659		
41	6/10/2017			\$70,593,768				\$21,389,794				\$91,983,562		
42	6/17/2017			\$69,501,864				\$22,402,713				\$91,904,577		

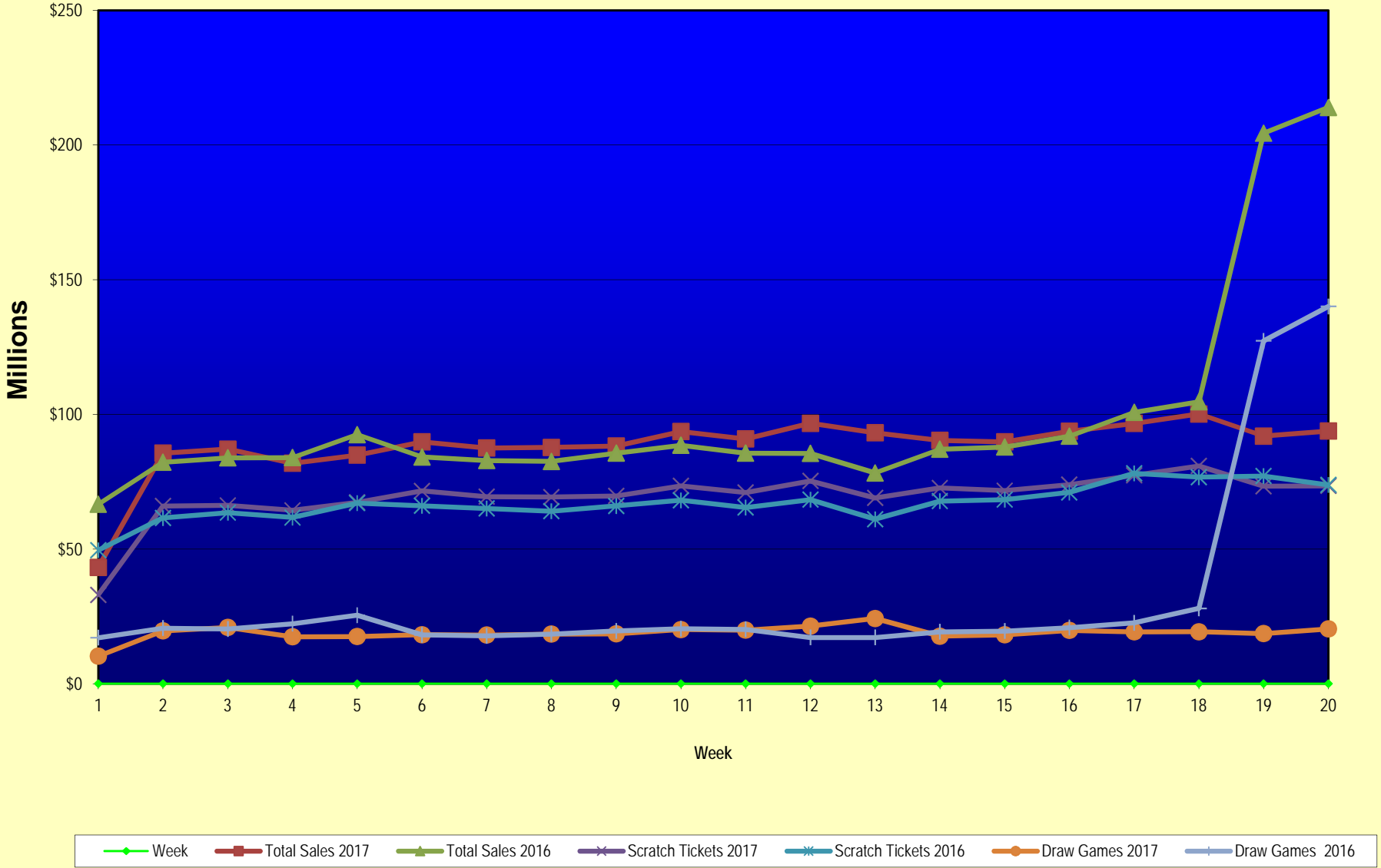
Texas Lottery Commission  
Fiscal Year Over Year Change in Sales  
Unaudited  
FY 2017 Compared to FY 2016

			SCRATCH TICKETS				DRAW GAMES				TOTAL SALES			
FY 2017			FY 2017	FY 2016	Difference	% change - Cumulative Sales	FY 2017	FY 2016	Difference	% change - Cumulative Sales	FY 2017	FY 2016	Difference	% change - Cumulative Sales
Week	Week	Ending												
43	6/24/2017			\$69,243,660				\$24,290,311				\$93,533,971		
44	7/1/2017			\$70,782,313				\$29,331,406				\$100,113,719		
45	7/8/2017			\$67,636,625				\$38,673,314				\$106,309,939		
46	7/15/2017			\$68,064,720				\$21,311,938				\$89,376,658		
47	7/22/2017			\$69,509,821				\$21,982,689				\$91,492,510		
48	7/29/2017			\$64,486,970				\$30,699,953				\$95,186,923		
49	8/5/2017			\$69,206,183				\$18,277,075				\$87,483,258		
50	8/12/2017			\$67,165,060				\$18,101,640				\$85,266,700		
51	8/19/2017			\$69,067,938				\$18,981,681				\$88,049,619		
52	8/26/2017			\$67,821,162				\$19,606,571				\$87,427,733		
	8/31/2017 **			\$36,609,542				\$9,310,254				\$45,919,796		
Total thru Current Week			\$1,388,963,491	\$1,340,720,674	\$48,242,817	3.6%	\$377,856,523	\$632,143,880	(\$254,287,357)	-40.2%	\$1,766,820,014	\$1,972,864,554	(\$206,044,540)	-10.4%
Fiscal Year Total			\$1,388,963,491	\$3,715,807,432			\$377,856,523	\$1,351,710,491			\$1,766,820,014	\$5,067,517,923		

\* FY 17 includes 3 days; FY 16 includes 5 days

\*\* FY 17 includes 5 days; FY 16 includes 4 days

### Texas Lottery Commission Fiscal Year Over Year Change in Sales



Note: Week 1 is not a full week of sales as this report is prepared on a Fiscal Year basis.

Texas Lottery Commission  
Scratch Tickets by Price Point  
Sales, Prize Expense, Sales Contribution and Payout Percentage With Year Over Year Changes  
Unaudited

Fiscal Year	Price Point	# of Active Games	FY Sales	% of Scratch Ticket Sales	Year over Year Change in Sales	FY Prize Expense	Year over Year Change in Prize Expense	FY Sales Contribution	Year over Year Change in Contribution	Average Prize Payout %	Year over Year Change in Payout %
2016	\$1.00	15	61,361,230	4.6%		37,061,946		24,299,284		60.4%	-0.2%
Through	\$2.00	27	139,058,902	10.4%		90,562,885		48,496,017		65.1%	-0.6%
1/16/2016	\$3.00	10	103,256,067	7.7%		67,961,776		35,294,291		65.8%	-0.1%
	\$5.00	42	440,846,005	32.9%		299,523,026		141,322,979		67.9%	0.0%
	\$10.00	15	259,964,510	19.4%		182,373,841		77,590,669		70.2%	-0.2%
	\$20.00	10	271,385,460	20.2%		203,388,533		67,996,927		74.9%	0.0%
	\$50.00	3	64,848,500	4.8%		50,434,845		14,413,655		77.8%	0.0%
<b>Total</b>		<b>122</b>	<b>\$1,340,720,674</b>			<b>\$931,306,853</b>		<b>\$409,413,821</b>		<b>69.5%</b>	<b>0.0%</b>
2017	\$1.00	18	55,149,987	4.0%		33,307,556		21,842,431		60.4%	0.3%
Through	\$2.00	23	118,763,856	8.6%		77,335,788		41,428,068		65.1%	-0.1%
1/14/2017	\$3.00	8	94,940,838	6.8%		62,583,497		32,357,341		65.9%	0.0%
	\$5.00	42	442,950,020	31.9%		300,974,660		141,975,360		67.9%	0.0%
	\$10.00	17	295,236,000	21.3%		208,148,875		87,087,125		70.5%	0.5%
	\$20.00	11	310,529,540	22.4%		232,688,604		77,840,936		74.9%	0.0%
	\$50.00	4	71,393,250	5.1%		55,552,570		15,840,680		77.8%	0.0%
<b>Total</b>		<b>123</b>	<b>\$1,388,963,491</b>			<b>\$970,591,550</b>		<b>\$418,371,941</b>		<b>69.9%</b>	<b>0.5%</b>
Variance	\$1.00	3	-6,211,243		-10.1%	-3,754,390	-10.1%	-2,456,853	-10.1%	-0.01%	
2017 to	\$2.00	-4	-20,295,046		-14.6%	-13,227,097	-14.6%	-7,067,949	-14.6%	-0.01%	
2016	\$3.00	-2	-8,315,229		-8.1%	-5,378,279	-7.9%	-2,936,950	-8.3%	0.10%	
	\$5.00	0	2,104,015		0.5%	1,451,633	0.5%	652,382	0.5%	0.00%	
	\$10.00	2	35,271,490		13.6%	25,775,034	14.1%	9,496,456	12.2%	0.35%	
	\$20.00	1	39,144,080		14.4%	29,300,071	14.4%	9,844,009	14.5%	-0.01%	
	\$50.00	1	6,544,750		10.1%	5,117,725	10.1%	1,427,025	9.9%	0.04%	
<b>Total</b>		<b>1</b>	<b>\$48,242,817</b>		<b>3.6%</b>	<b>\$39,284,698</b>	<b>4.2%</b>	<b>\$8,958,119</b>	<b>2.2%</b>	<b>0.42%</b>	

Notes - Scratch Ticket Variances

Texas Lottery Commission  
Scratch Tickets by Price Point  
Sales, Prize Expense, Sales Contribution and Payout Percentage With Year Over Year Changes  
Unaudited

		FY 2017		FY 2016		Difference
Sales	\$1 - \$5	\$711,804,701		\$744,522,204		-\$32,717,503
Prize Exp.	\$1 - \$5	\$474,201,501		\$495,109,634		-\$20,908,133
Sales Cont.	\$1 - \$5	\$237,603,200		\$249,412,570		-\$11,809,370
Prize Exp. %	\$1 - \$5	66.6%		66.5%		0.1%
		FY 2017		FY 2016		Difference
Sales	\$10 - \$50	\$677,158,790		\$596,198,470		\$80,960,320
Prize Exp.	\$10 - \$50	\$496,390,049		\$436,197,219		\$60,192,830
Sales Cont.	\$10 - \$50	\$180,768,741		\$160,001,251		\$20,767,490
Prize Exp. %	\$10 - \$50	73.3%		73.2%		0.1%
		FY 2017		FY 2016		Difference
Sales	Scratch	\$1,388,963,491		\$1,340,720,674		\$48,242,817
Prize Exp.	Scratch	\$970,591,550		\$931,306,853		\$39,284,698
Sales Cont.	Scratch	\$418,371,941		\$409,413,821		\$8,958,119
Prize Exp. %	Scratch	69.9%		69.5%		0.4%

		FY 2017		FY 2016		Difference
Sales	\$1 - \$10	\$1,007,040,701		\$1,004,486,714		\$2,553,987
Prize Exp.	\$1 - \$10	\$682,350,376		\$677,483,475		\$4,866,901
Sales Cont.	\$1 - \$10	\$324,690,325		\$327,003,239		-\$2,312,914
Prize Exp. %	\$1 - \$10	67.8%		67.4%		0.3%
		FY 2017		FY 2016		Difference
Sales	\$20 - \$50	\$381,922,790		\$336,233,960		\$45,688,830
Prize Exp.	\$20 - \$50	\$288,241,174		\$253,823,378		\$34,417,796
Sales Cont.	\$20 - \$50	\$93,681,616		\$82,410,582		\$11,271,034
Prize Exp. %	\$20 - \$50	75.5%		75.5%		0.0%
		FY 2017		FY 2016		Difference
Sales	Scratch	\$1,388,963,491		\$1,340,720,674		\$48,242,817
Prize Exp.	Scratch	\$970,591,550		\$931,306,853		\$39,284,698
Sales Cont.	Scratch	\$418,371,941		\$409,413,821		\$8,958,119
Prize Exp. %	Scratch	69.9%		69.5%		0.4%



Texas Lottery Commission  
**Weekly Sales Summary**  
**& Comparison to Previous Week**  
 Unaudited

	Week Ending 1/14/2017	% of Sales	Week Ending 1/07/2017	% of Sales	\$ change	% change
	<u>THIS WEEK</u>		<u>LAST WEEK</u>			
Total Sales	<u>\$93,823,040</u>		<u>\$91,940,268</u>		<u>\$1,882,772</u>	2.05%
Scratch Tickets	<u>\$73,471,643</u>	78.3%	<u>\$73,328,624</u>	79.8%	<u>\$143,019</u>	0.20%
Lotto	\$2,225,676	2.4%	\$2,097,687	2.3%	\$127,989	6.10%
Lotto Extra	\$433,448	0.5%	\$408,605	0.4%	\$24,843	6.08%
Pick 3	\$5,078,795	5.4%	\$4,745,822	5.2%	\$332,973	7.02%
Pick 3 Sum It Up	\$95,352	0.1%	\$91,405	0.1%	\$3,948	4.32%
Cash Five	\$857,133	0.9%	\$842,694	0.9%	\$14,439	1.71%
Texas Two Step	\$949,656	1.0%	\$819,153	0.9%	\$130,503	15.93%
Mega Millions	\$2,863,206	3.1%	\$2,524,889	2.7%	\$338,317	13.40%
Megaplier	\$730,587	0.8%	\$654,478	0.7%	\$76,109	11.63%
Daily 4	\$1,930,373	2.1%	\$1,898,406	2.1%	\$31,968	1.68%
Daily 4 Sum It Up	\$112,082	0.1%	\$110,548	0.1%	\$1,535	1.39%
Powerball	\$3,684,764	3.9%	\$3,107,618	3.4%	\$577,146	18.57%
Power Play	\$544,661	0.6%	\$474,348	0.5%	\$70,313	14.82%
All or Nothing	\$562,100	0.6%	\$550,422	0.6%	\$11,678	2.12%
Texas Triple Chance	\$283,564	0.3%	\$285,570	0.3%	-\$2,006	-0.70%
Total Draw Game Sales	<u>\$20,351,397</u>		<u>\$18,611,644</u>		<u>\$1,739,753</u>	9.35%

\* Totals may not sum due to rounding.

Texas Lottery Commission  
Weekly Sales Summary  
Unaudited

SCRATCH TICKETS  
TOP TEN SELLING GAMES

For the week ending: 1/14/2017

Rank	Price Point	Game	Sales (Millions)
1	\$ 10	50X THE CASH	\$ 5.784
2	\$ 5	20X THE CASH	\$ 3.742
3	\$ 10	CASHWORD MULTIPLIER	\$ 3.500
4	\$ 5	\$500 FRENZY	\$ 3.497
5	\$ 5	SUPER LOTERIA	\$ 3.286
6	\$ 10	\$1 MILLION HIGH ROLLER	\$ 2.947
7	\$ 50	\$7,500,000 ULTIMATE CASH	\$ 2.933
8	\$ 3	BONUS CASHWORD	\$ 2.361
9	\$ 20	SUPER BREAK THE BANK	\$ 2.202
10	\$ 10	\$200 MILLION PAYOUT	\$ 2.110

Texas Lottery Commission  
Prize Payout Tracking Report  
Unaudited

Through the week ending: 1/14/2017

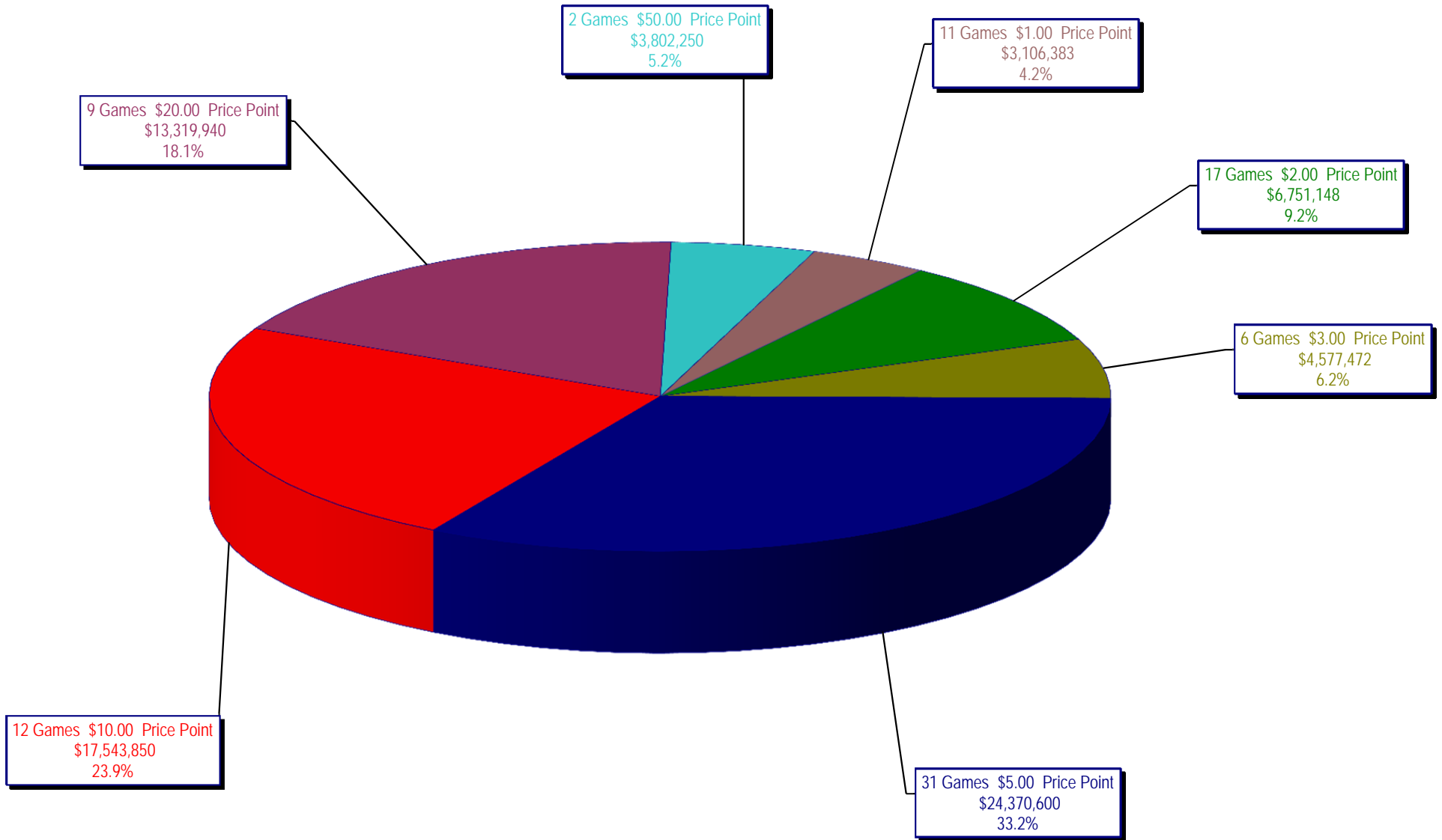
Draw Game Sales

		FY Sales Through Week Ending 1/14/2017		FY Prize Expense Through Week Ending 1/14/2017	Actual* Prize Payout	Base Payout (Prize Pool)
Lotto	\$	41,373,309	\$	20,693,925	50.02%	50.00%
Lotto Extra		7,940,408		4,288,212	54.00%	53.70%
Pick 3		92,172,213		47,065,390	51.06%	50.00%
Pick 3 Sum It Up		1,750,962		784,217	44.79%	50.00%
Cash Five		16,401,304		8,200,678	50.00%	50.00%
Texas Two Step		20,334,468		10,535,395	51.81%	50.00%
Mega Millions		40,280,878		20,533,701	50.98%	50.00%**
Megaplier		10,976,495		5,487,504	49.99%	N/A
Daily 4		34,841,006		20,851,375	59.85%	50.00%
Daily 4 Sum It Up		1,859,761		2,326,635	125.10%	50.00%
Powerball		81,661,593		40,847,837	50.02%	50.00%**
Power Play		11,555,873		5,781,729	50.03%	N/A
All or Nothing		10,827,346		5,833,618	53.88%	55.98%
Texas Triple Chance		5,880,908		2,974,184	50.57%	54.42%
<b>Totals</b>	\$	<b>377,856,523</b>	\$	<b>196,204,399</b>	<b>51.93%</b>	

\* Before Unclaimed Prizes

\*\*Estimated; depends on # of guaranteed prizes won in Texas

Texas Lottery Commission  
Scratch Ticket Sales  
For the week ending 1/14/2017  
(Unaudited)



**Texas Lottery Commission**  
**All Game Sales**  
For the week ending 1/14/2017  
(Unaudited)

