



WEEKLY SALES SUMMARY

Unaudited

Week Ending: 1/16/2016

Texas Lottery Commission
Fiscal Year to Date Sales Comparison
Unaudited

Through the Week Ending 1/16/2016 (20 Weeks)

Sales by Game	FY 2014 *	FY 2015 **	FY 2016	\$ Change		% Change	
				FY 2016 to FY 2014	FY 2016 to FY 2015	FY 2016 to FY 2014	FY 2016 to FY 2015
Scratch Tickets	\$ 1,227,493,583	\$ 1,271,728,340	\$ 1,340,720,674	\$ 113,227,091	\$ 68,992,334	9.2%	5.4%
Lotto Texas	51,085,964	46,423,424	50,248,600	-837,364	3,825,176	-1.6%	8.2%
Lotto Extra	6,610,694	7,031,601	8,472,122	1,861,428	1,440,521	28.2%	20.5%
Pick 3	96,496,263	95,199,398	95,371,998	-1,124,266	172,600	-1.2%	0.2%
Pick 3 Sum It Up	1,923,175	1,819,581	1,912,028	-11,147	92,448	-0.6%	5.1%
Cash Five	20,326,823	19,006,008	17,594,819	-2,732,004	-1,411,189	-13.4%	-7.4%
Texas Two Step	21,259,087	20,430,286	19,560,495	-1,698,592	-869,791	-8.0%	-4.3%
Mega Millions	93,897,662	66,824,003	51,241,817	-42,655,845	-15,582,186	-45.4%	-23.3%
Megaplier	19,248,504	14,978,921	12,663,075	-6,585,429	-2,315,846	-34.2%	-15.5%
Daily 4	31,877,459	32,217,719	33,037,320	1,159,861	819,601	3.6%	2.5%
Daily 4 Sum It Up	1,967,316	1,917,615	1,718,847	-248,470	-198,768	-12.6%	-10.4%
Powerball	81,415,998	66,661,578	288,033,623	206,617,625	221,372,045	253.8%	332.1%
Power Play	9,689,167	8,737,644	29,899,328	20,210,161	21,161,684	208.6%	242.2%
All or Nothing	18,094,599	14,758,054	11,804,824	-6,289,775	-2,953,230	-34.8%	-20.0%
Monopoly	- ¹	2,656,530	-	-	-2,656,530	-	-100.0%
Texas Triple Chance	-	-	10,584,985	10,584,985	10,584,985	-	-
Total	\$ 1,681,386,294	\$ 1,670,390,701	\$ 1,972,864,554	\$ 291,478,261	\$ 302,473,854	17.3%	18.1%

* 2 extra days

** 1 extra day

¹ Monopoly sales were suspended after draw on 12/12/14

Texas Lottery Commission
Fiscal Year to Date Cumulative Average Sales Comparison
Unaudited

Through the Week Ending 1/16/2016 (20 Weeks)

Sales by Game	FY 2014	FY 2015	FY 2016
Scratch Tickets	\$ 8,767,811	\$ 9,149,125	\$ 9,715,367
Lotto Texas	364,900	333,981	364,120
Lotto Extra	47,219	50,587	61,392
Pick 3	689,259	684,888	691,101
Pick 3 Sum It Up	13,737	13,091	13,855
Cash Five	145,192	136,734	127,499
Texas Two Step	151,851	146,980	141,743
Mega Millions	670,698	480,748	371,318
Megaplier	137,489	107,762	91,761
Daily 4	227,696	231,782	239,401
Daily 4 Sum It Up	14,052	13,796	12,455
Powerball	581,543	479,580	2,087,200
Power Play	69,208	62,861	216,662
All or Nothing	129,247	106,173	85,542
Monopoly	- **	48,301	-
Texas Triple Chance	-	-	* 94,509
Total	\$ <u>12,009,902</u>	\$ <u>12,046,388</u>	\$ <u>14,313,926</u>

thru 1/18/2014
140 days

**

thru 1/17/2015
139 days
55 days

*

thru 1/16/2016
138 days
112 days

Texas Lottery Commission
Fiscal Year Over Year Change in Sales
Unaudited
FY 2016 Compared to FY 2015

			SCRATCH TICKETS				DRAW GAMES				TOTAL SALES			
FY 2016			% change -				% change -				% change -			
Week	Week	Ending	FY 2016	FY 2015	Difference	Cumulative Sales	FY 2016	FY 2015	Difference	Cumulative Sales	FY 2016	FY 2015	Difference	Cumulative Sales
1	9/5/2015 *		\$49,534,249	\$54,911,801	(\$5,377,552)	-9.8%	\$17,091,724	\$17,482,488	(\$390,765)	-2.2%	\$66,625,973	\$72,394,289	(\$5,768,317)	-8.0%
2	9/12/2015		\$61,566,291	\$61,436,533	\$129,758	0.2%	\$20,630,922	\$19,097,081	\$1,533,841	8.0%	\$82,197,213	\$80,533,614	\$1,663,599	2.1%
3	9/19/2015		\$63,530,657	\$60,959,234	\$2,571,423	4.2%	\$20,327,253	\$20,567,894	(\$240,641)	-1.2%	\$83,857,910	\$81,527,128	\$2,330,782	2.9%
4	9/26/2015		\$61,731,400	\$59,710,056	\$2,021,344	3.4%	\$22,252,290	\$19,920,828	\$2,331,462	11.7%	\$83,983,690	\$79,630,884	\$4,352,806	5.5%
5	10/3/2015		\$67,048,415	\$62,119,854	\$4,928,561	7.9%	\$25,436,791	\$18,531,421	\$6,905,370	37.3%	\$92,485,206	\$80,651,275	\$11,833,931	14.7%
6	10/10/2015		\$66,049,706	\$61,253,665	\$4,796,041	7.8%	\$18,138,977	\$18,985,332	(\$846,355)	-4.5%	\$84,188,683	\$80,238,997	\$3,949,687	4.9%
7	10/17/2015		\$65,073,593	\$60,230,048	\$4,843,545	8.0%	\$17,776,414	\$19,538,402	(\$1,761,988)	-9.0%	\$82,850,007	\$79,768,450	\$3,081,558	3.9%
8	10/24/2015		\$64,087,437	\$62,384,112	\$1,703,325	2.7%	\$18,450,464	\$21,475,643	(\$3,025,179)	-14.1%	\$82,537,901	\$83,859,755	(\$1,321,854)	-1.6%
9	10/31/2015		\$66,025,374	\$63,404,713	\$2,620,661	4.1%	\$19,568,150	\$23,568,817	(\$4,000,668)	-17.0%	\$85,593,524	\$86,973,530	(\$1,380,007)	-1.6%
10	11/7/2015		\$68,137,192	\$65,486,719	\$2,650,473	4.0%	\$20,398,351	\$23,749,032	(\$3,350,681)	-14.1%	\$88,535,543	\$89,235,751	(\$700,208)	-0.8%
11	11/14/2015		\$65,449,428	\$61,745,521	\$3,703,907	6.0%	\$20,169,382	\$17,449,604	\$2,719,779	15.6%	\$85,618,810	\$79,195,125	\$6,423,686	8.1%
12	11/21/2015		\$68,364,421	\$66,353,583	\$2,010,838	3.0%	\$17,174,606	\$17,108,084	\$66,522	0.4%	\$85,539,027	\$83,461,667	\$2,077,360	2.5%
13	11/28/2015		\$61,091,628	\$60,471,184	\$620,444	1.0%	\$17,168,993	\$17,303,129	(\$134,136)	-0.8%	\$78,260,621	\$77,774,313	\$486,309	0.6%
14	12/5/2015		\$67,830,827	\$66,648,696	\$1,182,131	1.8%	\$19,252,418	\$18,862,425	\$389,994	2.1%	\$87,083,245	\$85,511,121	\$1,572,125	1.8%
15	12/12/2015		\$68,324,452	\$65,708,630	\$2,615,822	4.0%	\$19,529,408	\$18,649,598	\$879,811	4.7%	\$87,853,860	\$84,358,228	\$3,495,633	4.1%
16	12/19/2015		\$71,041,258	\$68,551,298	\$2,489,960	3.6%	\$20,824,840	\$19,051,100	\$1,773,740	9.3%	\$91,866,098	\$87,602,398	\$4,263,700	4.9%
17	12/26/2015		\$78,125,965	\$73,858,618	\$4,267,347	5.8%	\$22,586,417	\$20,006,357	\$2,580,061	12.9%	\$100,712,382	\$93,864,975	\$6,847,408	7.3%
18	1/2/2016		\$76,712,975	\$67,733,268	\$8,979,707	13.3%	\$27,972,880	\$21,355,167	\$6,617,714	31.0%	\$104,685,855	\$89,088,435	\$15,597,421	17.5%
19	1/9/2016		\$77,136,541	\$64,745,641	\$12,390,900	19.1%	\$127,289,478	\$22,265,347	\$105,024,131	471.7%	\$204,426,019	\$87,010,988	\$117,415,031	134.9%
20	1/16/2016		\$73,858,865	\$64,015,166	\$9,843,699	15.4%	\$140,104,126	\$23,694,617	\$116,409,509	491.3%	\$213,962,991	\$87,709,783	\$126,253,208	143.9%
21	1/23/2016			\$62,569,156				\$19,765,442				\$82,334,598		
22	1/30/2016			\$68,001,588				\$22,877,000				\$90,878,588		
23	2/6/2016			\$75,677,650				\$31,662,209				\$107,339,859		
24	2/13/2016			\$75,368,712				\$46,091,747				\$121,460,459		
25	2/20/2016			\$74,833,076				\$19,865,172				\$94,698,248		
26	2/27/2016			\$69,918,013				\$19,735,352				\$89,653,365		
27	3/5/2016			\$74,848,961				\$19,946,068				\$94,795,029		
28	3/12/2016			\$70,079,409				\$20,044,562				\$90,123,971		
29	3/19/2016			\$70,368,686				\$18,480,795				\$88,849,481		
30	3/26/2016			\$70,280,600				\$17,595,205				\$87,875,805		
31	4/2/2016			\$74,369,952				\$18,378,917				\$92,748,869		
32	4/9/2016			\$67,416,817				\$18,594,844				\$86,011,661		
33	4/16/2016			\$68,393,316				\$18,104,632				\$86,497,948		
34	4/23/2016			\$70,078,182				\$17,957,150				\$88,035,332		
35	4/30/2016			\$71,744,718				\$18,961,113				\$90,705,831		
36	5/7/2016			\$73,415,978				\$20,210,341				\$93,626,319		
37	5/14/2016			\$72,152,109				\$20,362,774				\$92,514,883		
38	5/21/2016			\$70,399,950				\$21,246,276				\$91,646,226		
39	5/28/2016			\$68,547,554				\$22,227,946				\$90,775,500		
40	6/4/2016			\$71,254,006				\$20,739,703				\$91,993,709		
41	6/11/2016			\$65,878,375				\$17,216,403				\$83,094,778		
42	6/18/2016			\$66,658,742				\$17,340,531				\$83,999,273		

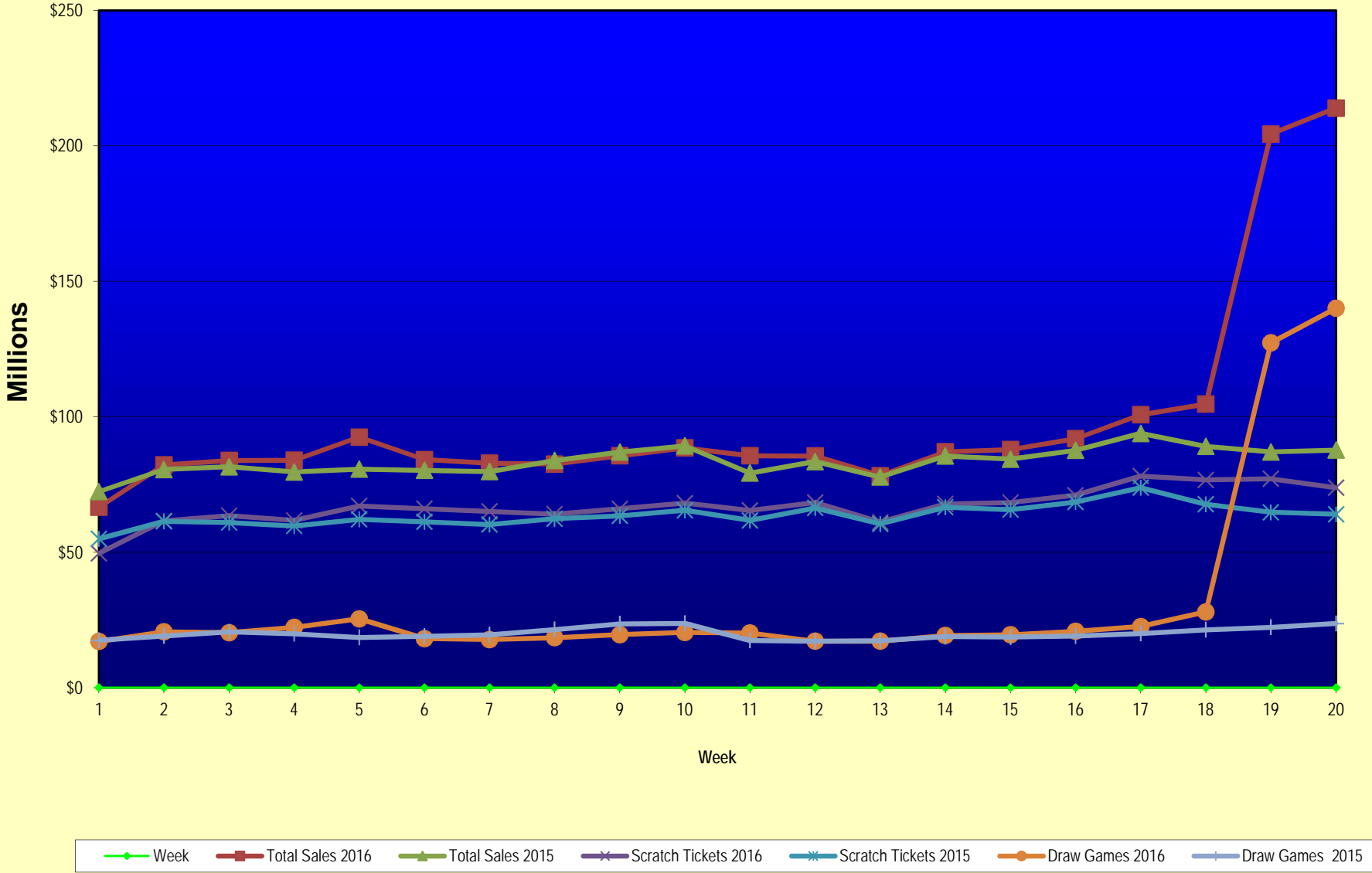
Texas Lottery Commission
Fiscal Year Over Year Change in Sales
Unaudited
FY 2016 Compared to FY 2015

			SCRATCH TICKETS				DRAW GAMES				TOTAL SALES			
FY 2016			FY 2016	FY 2015	Difference	% change - Cumulative Sales	FY 2016	FY 2015	Difference	% change - Cumulative Sales	FY 2016	FY 2015	Difference	% change - Cumulative Sales
Week	Week	Ending												
43	6/25/2016			\$65,282,276				\$16,873,368				\$82,155,644		
44	7/2/2016			\$67,757,752				\$18,007,540				\$85,765,292		
45	7/9/2016			\$64,718,254				\$18,203,985				\$82,922,239		
46	7/16/2016			\$64,957,977				\$18,792,785				\$83,750,762		
47	7/23/2016			\$62,541,241				\$18,229,965				\$80,771,206		
48	7/30/2016			\$66,468,460				\$17,742,489				\$84,210,949		
49	8/6/2016			\$62,412,598				\$17,331,374				\$79,743,972		
50	8/13/2016			\$62,089,389				\$17,501,599				\$79,590,988		
51	8/20/2016			\$62,437,148				\$17,779,458				\$80,216,606		
52	8/27/2016			\$61,403,206				\$18,529,560				\$79,932,766		
	8/31/2016 **			\$17,309,621				\$3,279,958				\$20,589,579		
Total thru Current Week			\$1,340,720,674	\$1,271,728,340	\$68,992,334	5.4%	\$632,143,880	\$398,662,361	\$233,481,520	58.6%	\$1,972,864,554	\$1,670,390,701	\$302,473,854	18.1%
Fiscal Year Total			\$1,340,720,674	\$3,481,361,812			\$632,143,880	\$1,048,338,613			\$1,972,864,554	\$4,529,700,425		

* FY 16 includes 5 days; FY 15 includes 6 days

** FY 16 includes 4 days; FY 15 includes 2 days

Texas Lottery Commission Fiscal Year Over Year Change in Sales



Note: Week 1 is not a full week of sales as this report is prepared on a Fiscal Year basis.

Texas Lottery Commission
Scratch Tickets by Price Point
Sales, Prize Expense, Sales Contribution and Payout Percentage With Year Over Year Changes
Unaudited

Fiscal Year	Price Point	# of Active Games	FY Sales	% of Scratch Ticket Sales	Year over Year Change in Sales	FY Prize Expense	Year over Year Change in Prize Expense	FY Sales Contribution	Year over Year Change in Contribution	Average Prize Payout %	Year over Year Change in Payout %
2015	\$1.00	18	64,604,369	5.1%		39,395,009		25,209,360		61.0%	1.8%
Through	\$2.00	27	133,501,712	10.5%		87,937,660		45,564,052		65.9%	1.6%
1/17/2015	\$3.00	13	126,074,064	9.9%		83,100,488		42,973,576		65.9%	0.4%
	\$5.00	38	404,814,225	31.8%		275,009,852		129,804,373		67.9%	0.0%
	\$10.00	14	250,809,960	19.7%		176,777,300		74,032,660		70.5%	0.2%
	\$20.00	9	234,088,060	18.4%		175,502,556		58,585,504		75.0%	0.1%
	\$50.00	3	57,835,950	4.5%		44,949,015		12,886,935		77.7%	0.1%
Total		122	\$1,271,728,340			\$882,671,881		\$389,056,459		69.4%	0.7%
2016	\$1.00	15	61,361,230	4.6%		37,061,946		24,299,284		60.4%	-0.2%
thru	\$2.00	27	139,058,902	10.4%		90,562,885		48,496,017		65.1%	-0.6%
1/16/2016	\$3.00	10	103,256,067	7.7%		67,961,776		35,294,291		65.8%	-0.1%
	\$5.00	42	440,846,005	32.9%		299,523,026		141,322,979		67.9%	0.0%
	\$10.00	15	259,964,510	19.4%		182,373,841		77,590,669		70.2%	-0.2%
	\$20.00	10	271,385,460	20.2%		203,388,533		67,996,927		74.9%	0.0%
	\$50.00	3	64,848,500	4.8%		50,434,845		14,413,655		77.8%	0.0%
Total		122	\$1,340,720,674			\$931,306,853		\$409,413,821		69.5%	0.0%
Variance	\$1.00	-3	-3,243,139		-5.0%	-2,333,063	-5.9%	-910,076	-3.6%	-0.58%	
2016 to	\$2.00	0	5,557,190		4.2%	2,625,224	3.0%	2,931,966	6.4%	-0.74%	
2015	\$3.00	-3	-22,817,997		-18.1%	-15,138,712	-18.2%	-7,679,285	-17.9%	-0.10%	
	\$5.00	4	36,031,780		8.9%	24,513,174	8.9%	11,518,606	8.9%	0.01%	
	\$10.00	1	9,154,550		3.6%	5,596,541	3.2%	3,558,009	4.8%	-0.33%	
	\$20.00	1	37,297,400		15.9%	27,885,977	15.9%	9,411,423	16.1%	-0.03%	
	\$50.00	0	7,012,550		12.1%	5,485,830	12.2%	1,526,720	11.8%	0.06%	
Total		0	\$68,992,334		5.4%	\$48,634,972	5.5%	\$20,357,362	5.2%	0.06%	

Notes - Scratch Ticket Variances

Texas Lottery Commission
Scratch Tickets by Price Point
Sales, Prize Expense, Sales Contribution and Payout Percentage With Year Over Year Changes
Unaudited

			FY 2016		FY 2015	Difference
Sales	\$1 - \$5		\$744,522,204		\$728,994,370	\$15,527,834
Prize Exp.	\$1 - \$5		\$495,109,634		\$485,443,010	\$9,666,624
Sales Cont.	\$1 - \$5		\$249,412,570		\$243,551,360	\$5,861,210
Prize Exp. %	\$1 - \$5		66.5%		66.6%	-0.1%
			FY 2016		FY 2015	Difference
Sales	\$10 - \$50		\$596,198,470		\$542,733,970	\$53,464,500
Prize Exp.	\$10 - \$50		\$436,197,219		\$397,228,870	\$38,968,348
Sales Cont.	\$10 - \$50		\$160,001,251		\$145,505,100	\$14,496,152
Prize Exp. %	\$10 - \$50		73.2%		73.2%	0.0%
			FY 2016		FY 2015	Difference
Sales	Scratch		\$1,340,720,674		\$1,271,728,340	\$68,992,334
Prize Exp.	Scratch		\$931,306,853		\$882,671,881	\$48,634,972
Sales Cont.	Scratch		\$409,413,821		\$389,056,459	\$20,357,362
Prize Exp. %	Scratch		69.5%		69.4%	0.1%

			FY 2016		FY 2015	Difference
Sales	\$1 - \$10		\$1,004,486,714		\$979,804,330	\$24,682,384
Prize Exp.	\$1 - \$10		\$677,483,475		\$662,220,310	\$15,263,164
Sales Cont.	\$1 - \$10		\$327,003,239		\$317,584,020	\$9,419,220
Prize Exp. %	\$1 - \$10		67.4%		67.6%	-0.1%
			FY 2016		FY 2015	Difference
Sales	\$20 - \$50		\$336,233,960		\$291,924,010	\$44,309,950
Prize Exp.	\$20 - \$50		\$253,823,378		\$220,451,570	\$33,371,808
Sales Cont.	\$20 - \$50		\$82,410,582		\$71,472,440	\$10,938,142
Prize Exp. %	\$20 - \$50		75.5%		75.5%	0.0%
			FY 2016		FY 2015	Difference
Sales	Scratch		\$1,340,720,674		\$1,271,728,340	\$68,992,334
Prize Exp.	Scratch		\$931,306,853		\$882,671,881	\$48,634,972
Sales Cont.	Scratch		\$409,413,821		\$389,056,459	\$20,357,362
Prize Exp. %	Scratch		69.5%		69.4%	0.1%

Texas Lottery Commission
Weekly Sales Summary
& Comparison to Previous Week
 Unaudited

	Week Ending 1/16/2016	% of Sales	Week Ending 1/09/2016	% of Sales	\$ change	% change
	<u>THIS WEEK</u>		<u>LAST WEEK</u>			
Total Sales	<u>\$213,962,991</u>		<u>\$204,426,019</u>		<u>\$9,536,972</u>	4.67%
Scratch Tickets	<u>\$73,858,865</u>	34.5%	<u>\$77,136,541</u>	37.7%	<u>-\$3,277,676</u>	-4.25%
Lotto	\$3,543,250	1.7%	\$3,569,884	1.7%	-\$26,634	-0.75%
Lotto Extra	\$585,402	0.3%	\$580,778	0.3%	\$4,624	0.80%
Pick 3	\$4,666,496	2.2%	\$4,782,398	2.3%	-\$115,902	-2.42%
Pick 3 Sum It Up	\$105,064	0.0%	\$102,725	0.1%	\$2,339	2.28%
Cash Five	\$901,254	0.4%	\$899,480	0.4%	\$1,774	0.20%
Texas Two Step	\$834,973	0.4%	\$1,029,458	0.5%	-\$194,485	-18.89%
Mega Millions	\$2,581,249	1.2%	\$4,896,815	2.4%	-\$2,315,566	-47.29%
Megaplier	\$661,350	0.3%	\$1,100,345	0.5%	-\$438,995	-39.90%
Daily 4	\$1,658,823	0.8%	\$1,668,434	0.8%	-\$9,611	-0.58%
Daily 4 Sum It Up	\$94,886	0.0%	\$91,670	0.0%	\$3,216	3.51%
Powerball	\$112,171,706	52.4%	\$98,440,136	48.2%	\$13,731,570	13.95%
Power Play	\$11,071,288	5.2%	\$8,915,982	4.4%	\$2,155,306	24.17%
All or Nothing	\$613,248	0.3%	\$589,972	0.3%	\$23,276	3.95%
Texas Triple Chance	\$615,138	0.3%	\$621,402	0.3%	-\$6,264	-1.01%
Total Draw Game Sales	<u>\$140,104,126</u>		<u>\$127,289,478</u>		<u>\$12,814,648</u>	10.07%

* Totals may not sum due to rounding.

Texas Lottery Commission
Weekly Sales Summary
Unaudited

SCRATCH TICKETS
TOP TEN SELLING GAMES

For the week ending: 1/16/2016

Rank	Price Point	Game	Sales (Millions)
1	\$ 20	HIT \$1,000,000	\$ 5.296
2	\$ 10	HIT \$500,000	\$ 4.548
3	\$ 5	SUPER LOTERIA	\$ 4.381
4	\$ 5	HIT \$200,000	\$ 4.298
5	\$ 10	CASHWORD MULTIPLIER	\$ 2.749
6	\$ 50	DIAMOND DOLLARS	\$ 2.473
7	\$ 3	BONUS CASHWORD	\$ 2.377
8	\$ 20	\$1,000,000 INSTANT CASHOUT	\$ 2.213
9	\$ 3	TEXAS LOTERIA	\$ 2.173
10	\$ 5	\$100,000 CASHWORD-O-RAMA	\$ 2.167

Texas Lottery Commission
Prize Payout Tracking Report
Unaudited

Through the week ending: 1/16/2016

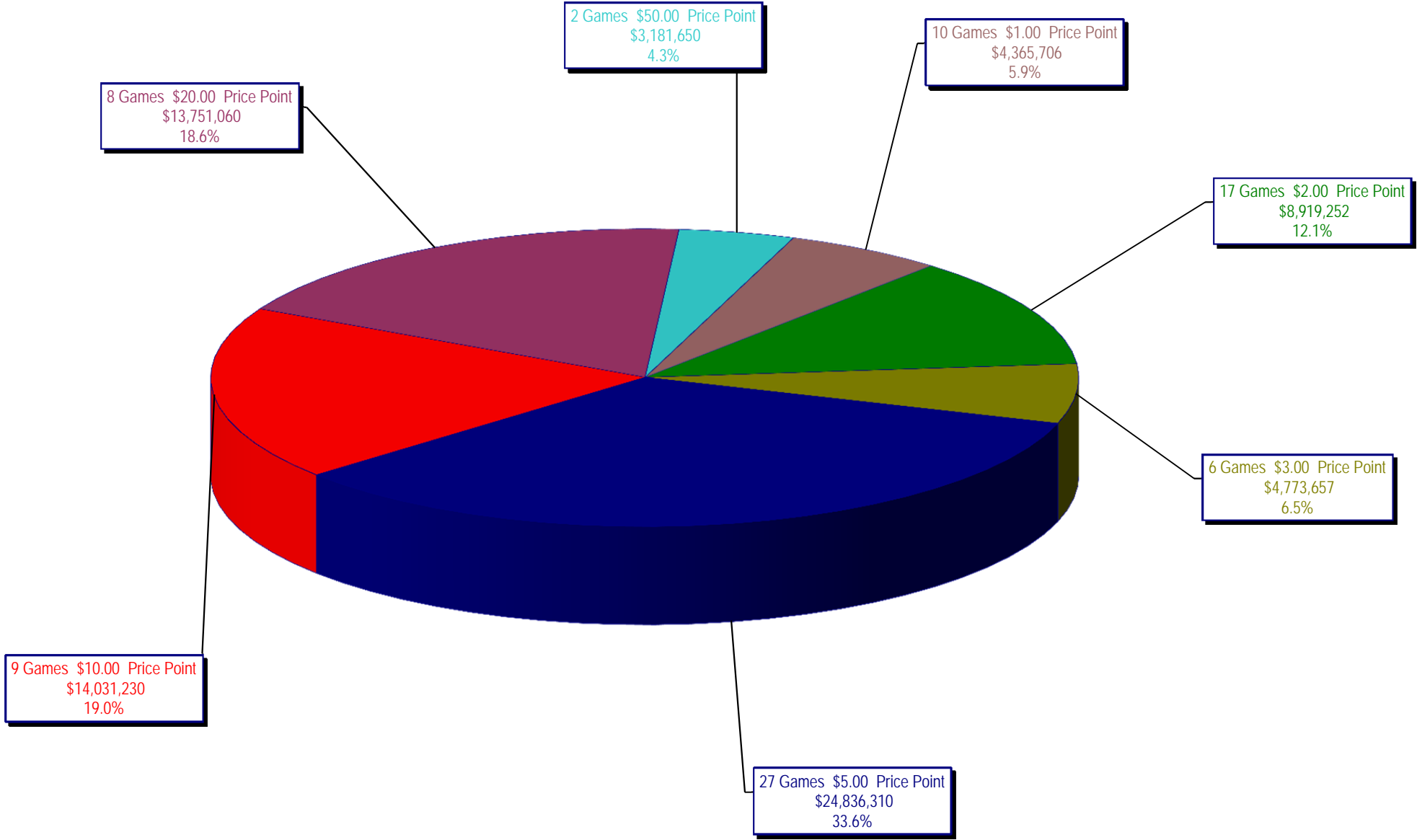
Draw Game Sales

		FY Sales Through Week Ending 1/16/2016		FY Prize Expense Through Week Ending 1/16/2016	Actual* Prize Payout	Base Payout (Prize Pool)
Lotto	\$	50,248,600	\$	31,072,408	61.84%	50.00%
Lotto Extra		8,472,122		4,368,012	51.56%	53.70%
Pick 3		95,371,998		46,650,320	48.91%	50.00%
Pick 3 Sum It Up		1,912,028		915,027	47.86%	50.00%
Cash Five		17,594,819		8,797,440	50.00%	50.00%
Texas Two Step		19,560,495		9,888,255	50.55%	50.00%
Mega Millions		51,241,817		26,287,406	51.30%	50.00%**
Megaplier		12,663,075		6,365,971	50.27%	N/A
Daily 4		33,037,320		18,760,650	56.79%	50.00%
Daily 4 Sum It Up		1,718,847		660,928	38.45%	50.00%
Powerball		288,033,623		144,088,273	50.02%	50.00%**
Power Play		29,899,328		14,951,376	50.01%	N/A
All or Nothing		11,804,824		6,264,804	53.07%	55.98%
Texas Triple Chance		10,584,985		6,609,384	62.44%	54.42%
Totals	\$	632,143,880	\$	325,680,253	51.52%	

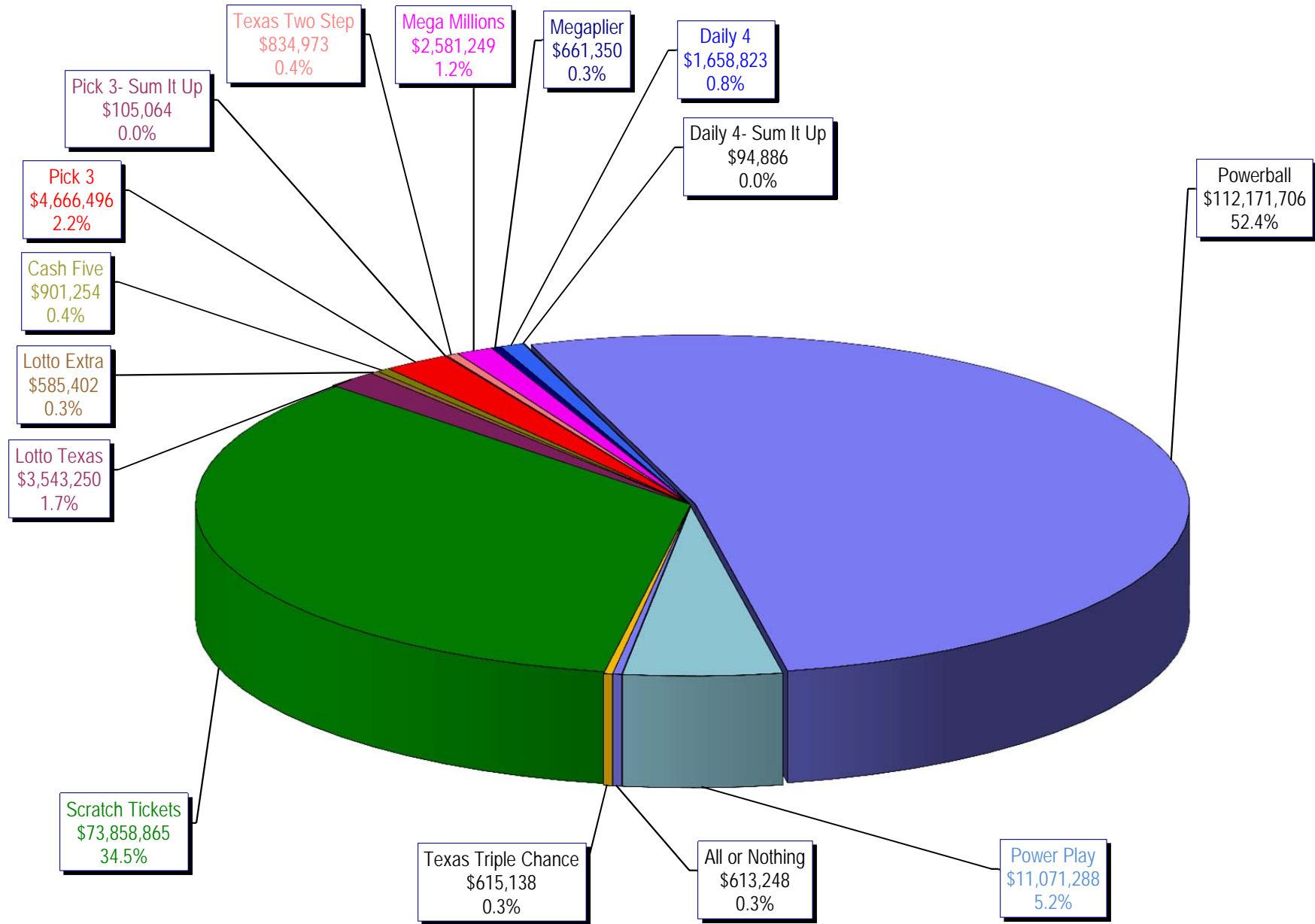
* Before Unclaimed Prizes

** Estimated; depends on # of guaranteed prizes won in Texas

Texas Lottery Commission
Scratch Ticket Sales
For the week ending 1/16/16
(Unaudited)



Texas Lottery Commission
All Game Sales
 For the week ending 1/16/16
 (Unaudited)



Texas Lottery Commission - Weekly Sales Summary for FY 2016 (Unaudited)

Week Ended	Scratch Tickets	New Games & Dates	Lotto Texas		Lotto Extra		Pick 3	Pick 3 Sum It Up	Cash Five	Texas Two Step	Jackpot M TH		Mega Millions	Jackpot T F		Megaplier	Daily 4	Daily 4 Sum It Up	Powerball	Jackpot W S		Power Play	All or Nothing	Texas Triple Chance	Total	Per Cap.	
			W	S	W	S					M	TH		T	F					W	S						
9/5/2015*	66,843,870	0	2,788,509	25	26	466,121	5,249,348	117,979	956,126	1,253,100	425	575	2,366,640	74	85	608,901	1,725,027	93,067	3,586,482	120	133	484,769	675,614		87,215,551	3.24	
9/12/2015	61,566,291	1717 (\$1.N); 1718 (\$5.N); 1748 (\$10.N); 1696 (\$3.N) - 9/08/15	2,793,426	26.5	27.75	465,451	4,974,238	103,203	919,536	1,423,604	725	950	2,511,039	95	106	629,091	1,641,226	86,539	3,927,126	149	167	518,060	638,384		82,197,213	3.05	
9/19/2015	63,530,657	0	2,845,557	28.25	29.5	475,307	4,715,566	95,242	928,275	854,109	200	225	1,817,155	15	20	487,946	1,647,829	81,483	5,082,782	185	208	639,614	656,388		83,857,910	3.11	
9/26/2015	61,731,400	1720 (\$2.N); 1721 (\$5.N); 1715 (\$5.N) - 9/21/15	2,815,638	30	30.75	468,584	4,735,629	97,118	924,334	1,048,752	300	450	1,860,438	25	31	499,201	1,628,350	82,200	6,648,092	235	267	790,427	653,528		83,983,690	3.12	
10/3/2015	67,048,415	0	3,034,763	31.5	32.25	502,043	4,925,789	100,522	919,217	1,347,552	600	725	2,053,673	39	47	539,290	1,662,320	88,291	8,036,576	301	40	884,785	616,594	725,376	92,485,206	3.43	
10/10/2015	66,049,706	1722 (\$1.N); 1723 (\$5.N); 1711 (\$20.N) - 10/05/15	2,175,801	5	5.25	366,506	4,803,855	97,005	899,614	1,141,865	925	200	2,113,720	55	65	535,411	1,636,542	86,150	2,572,748	50	60	372,480	593,616	743,664	84,188,683	3.12	
10/17/2015	65,073,593	0	2,133,286	5	5	358,076	4,629,752	92,453	876,040	824,622	200	225	2,286,703	75	84	568,477	1,576,323	79,576	2,638,956	70	80	377,157	580,870	754,124	82,850,007	3.07	
10/24/2015	64,087,437	1724 (\$2.N); 1768 (\$5.N); 1726 (\$10.N) - 10/19/15	2,099,176	5.25	5.5	358,217	4,515,381	92,071	860,960	991,931	300	425	2,600,946	93	105	626,019	1,553,788	80,225	2,946,077	90	100	411,192	562,378	752,104	82,537,901	3.06	
10/31/2015	66,025,374	0	2,165,101	5.75	6	368,559	4,653,961	91,360	873,751	944,275	550	200	2,945,749	117	129	695,705	1,621,009	85,560	3,327,954	110	127	455,266	573,258	766,642	85,593,524	3.18	
11/7/2015	68,137,192	1727 (\$1.N); 1728 (\$2.N); 1729 (\$5.N) - 11/16/15	2,232,267	6.25	6.5	379,508	4,977,693	96,887	891,111	911,796	225	300	3,416,380	144	164	795,028	1,688,298	86,418	3,071,581	142	40	425,312	599,980	826,093	88,535,543	3.28	
11/14/2015	65,449,428	0	2,185,621	6.75	7	373,102	4,726,211	93,030	870,215	1,087,101	425	575	4,139,462	180	200	938,757	1,614,727	82,536	2,437,413	50	60	357,760	574,596	688,852	85,618,810	3.18	
11/21/2015	68,364,421	1730 (\$2.N); 1783 (\$2.N); 1731 (\$5.N) - 11/16/15 1778 (\$2.N) - 11/18/15	2,173,857	7.25	7.5	369,519	4,674,293	88,988	862,630	825,054	200	225	1,830,909	15	20	489,485	1,632,096	82,077	2,553,907	70	80	370,594	586,348	634,850	85,539,027	3.17	
11/28/2015	61,091,628	0	2,113,171	7.75	8.25	364,947	4,523,108	87,438	825,047	904,825	300	400	1,785,419	25	31	478,828	1,591,416	82,363	2,886,666	90	100	406,251	546,614	572,902	78,260,621	2.90	
12/5/2015	67,830,827	1733 (\$5.N) - 12/5/15	2,245,481	8.75	9.5	385,346	5,020,926	94,445	898,598	957,116	525	200	2,073,099	39	47	545,451	1,789,318	94,198	3,432,248	110	127	467,917	603,222	645,054	87,083,245	3.23	
12/12/2015	68,324,452	1751 (\$1.N); 1780 (\$2.N); 1784 (\$5.N) - 12/07/15	2,281,004	10.25	10.75	391,281	4,980,397	94,549	877,611	815,777	225	200	2,160,601	57	66	555,974	1,746,314	86,684	3,835,044	145	164	508,111	592,212	603,850	87,853,860	3.26	
12/19/2015	71,041,258	0	2,326,771	11.5	12.25	400,223	4,980,685	95,154	879,423	888,674	225	300	2,322,855	74	85	592,792	1,796,682	92,401	4,707,013	180	202	600,420	573,754	567,994	91,866,098	3.41	
12/26/2015	78,125,965	1736 (\$5.N); 1740 (\$20.N) - 12/21/15 1789 (\$3.N) - 12/22/15	2,422,285	12.75	13.5	417,003	4,863,405	91,522	860,361	1,106,519	400	550	2,624,875	94	104	637,157	1,725,445	87,146	5,941,638	227	255	728,720	548,978	531,364	100,712,382	3.74	
1/2/2016	76,712,975	0	2,598,993	14.25	15.25	446,634	4,857,347	95,570	883,605	857,640	200	225	3,175,442	117	130	756,602	1,731,866	91,457	10,213,886	300	334	1,168,791	559,472	535,576	104,685,855	3.88	
1/9/2016	77,136,541	1738 (\$1.N); 1735 (\$2.N); 1737 (\$10.N) - 01/04/16	3,569,884	16	17	580,778	4,782,398	102,725	899,480	1,029,458	300	425	4,896,815	145	165	1,100,345	1,668,434	91,670	98,440,136	500	900	8,915,982	589,972	621,402	204,426,019	7.58	
1/16/2016	73,858,865	0	3,543,250	18	19	585,402	4,666,496	105,064	901,254	834,973	200	225	2,581,249	15	22	661,350	1,658,823	94,886	112,171,706	1.5	40	11,071,288	613,248	615,138	213,962,991	7.94	
weekly change	-4.2%		-0.7%			0.8%	-2.4%	2.3%	0.2%	-18.9%			-47.3%			-39.9%	-0.6%	3.5%	13.9%			24.2%	3.9%	-1.0%	4.7%		
	SALES		SALES			SALES	SALES	SALES	SALES	SALES			SALES			SALES	SALES	SALES	SALES			SALES	SALES	SALES	SALES	% of Sales	
Calendar Year to date	173,160,886		8,227,542			1,355,492	11,030,512	238,195	2,069,942	1,944,345			8,589,577			2,029,994	3,873,579	216,889	215,472,488			20,537,298	1,374,108	1,402,654	451,523,501	100.0%	
Fiscal Year to date 2016	1,340,720,674		50,248,600			8,472,122	95,371,998	1,912,028	17,594,819	19,560,495			51,241,817			12,663,075	33,037,320	1,718,847	288,033,623			29,899,328	11,804,824	10,584,985	1,972,864,554	100.0%	
*Full week includes 2 days from FY15																											