



WEEKLY SALES SUMMARY

Unaudited

Week Ending: 01/19/2013

Texas Lottery Commission
Fiscal Year to Date Sales Comparison
Unaudited

Through the week ending 01/19/2013 (21 weeks)

Sales by Game	FY 2011 *	FY 2012 **	FY 2013	\$ Change		% Change	
				FY 2013 to FY 2011	FY 2013 to FY 2012	FY 2013 to FY 2011	FY 2013 to FY 2012
Instants	\$ 1,093,503,667	\$ 1,129,612,818	\$ 1,179,407,442	\$ 85,903,775	\$ 49,794,624	7.9%	4.4%
Lotto Texas	67,604,967	68,708,029	61,128,228	-6,476,739	-7,579,801	-9.6%	-11.0%
Pick 3	106,804,028	103,806,247	102,693,790	-4,110,238	-1,112,457	-3.8%	-1.1%
Pick 3 Sum It Up	2,168,386	2,115,490	1,929,119	-239,267	-186,371	-11.0%	-8.8%
Cash Five	25,391,072	25,348,032	21,970,656	-3,420,416	-3,377,376	-13.5%	-13.3%
Texas Two Step	18,966,909	24,109,046	22,650,711	3,683,802	-1,458,335	19.4%	-6.0%
Mega Millions	78,807,645	60,901,825	41,000,202	-37,807,443	-19,901,623	-48.0%	-32.7%
Megaplier	15,412,542	13,419,183	9,536,522	-5,876,020	-3,882,661	-38.1%	-28.9%
Daily 4	22,110,936	24,540,098	27,080,342	4,969,407	2,540,245	22.5%	10.4%
Daily 4 Sum It Up	1,739,471	1,813,710	1,793,487	54,017	-20,223	3.1%	-1.1%
Powerball	33,449,448	49,300,881	111,732,433	78,282,985	62,431,553	234.0%	126.6%
Power Play	8,054,531	10,643,369	11,158,749	3,104,218	515,381	38.5%	4.8%
All or Nothing	-	-	35,523,740	35,523,740	35,523,740	-	-
Total	\$ <u>1,474,013,601</u>	\$ <u>1,514,318,727</u>	\$ <u>1,627,605,421</u>	\$ <u>153,591,821</u>	\$ <u>113,286,695</u>	10.4%	7.5%

* 3 extra days

** 2 extra days

Texas Lottery Commission
 Fiscal Year to Date Cumulative Average Sales Comparison
 Unaudited

Through the week ending 01/19/2013 (21 weeks)

Sales by Game	FY 2011	FY 2012	FY 2013
Instant	\$ 7,593,775	\$ 7,899,390	\$ 8,364,592
Lotto Texas	469,479	480,476	433,534
Pick 3	741,695	725,918	728,325
Pick 3 Sum It Up	15,058	14,794	13,682
Cash Five	176,327	177,259	155,820
Texas Two Step	131,715	168,595	160,643
Mega Millions	547,275	425,887	290,782
Megaplier	107,032	93,840	67,635
Daily 4	153,548	171,609	192,059
Daily 4 Sum It Up	12,080	12,683	12,720
Powerball	232,288	344,761	792,429
Power Play	55,934	74,429	79,140
All or Nothing	-	-	267,096 *
Total	\$ <u>10,236,206</u>	\$ <u>10,589,641</u>	\$ <u>11,558,455</u>
	thru 01/22/2011 144 days	thru 01/21/2012 143 days	thru 01/19/2013 141 days * 133 days

Texas Lottery Commission
Fiscal Year Over Year Change in Sales
Unaudited
FY 2013 Compared to FY 2012

Week	FY 2013 Week Ending	INSTANT TICKETS				DRAW GAMES				TOTAL SALES			
		FY 2013	FY 2012	Difference	% change - Cumulative Sales	FY 2013	FY 2012	Difference	% change - Cumulative Sales	FY 2013	FY 2012	Difference	% change - Cumulative Sales
1	9/1/2012**	\$9,611,328	\$25,147,181	(\$15,535,853)	-61.8%	\$3,712,535	\$9,704,561	(\$5,992,026)	-61.7%	\$13,323,863	\$34,851,742	(\$21,527,879)	-61.8%
2	9/8/2012	\$56,941,761	\$50,591,068	\$6,350,693	12.6%	\$19,305,417	\$17,681,853	\$1,623,564	9.2%	\$76,247,178	\$68,272,921	\$7,974,257	11.7%
3	9/15/2012	\$56,302,875	\$49,835,063	\$6,467,812	13.0%	\$20,857,230	\$16,842,326	\$4,014,904	23.8%	\$77,160,105	\$66,677,389	\$10,482,716	15.7%
4	9/22/2012	\$54,974,438	\$49,777,138	\$5,197,300	10.4%	\$20,570,277	\$17,504,800	\$3,065,477	17.5%	\$75,544,715	\$67,281,938	\$8,262,777	12.3%
5	9/29/2012	\$54,606,674	\$51,040,274	\$3,566,400	7.0%	\$20,462,690	\$18,653,100	\$1,809,591	9.7%	\$75,069,364	\$69,693,374	\$5,375,991	7.7%
6	10/6/2012	\$59,223,327	\$53,715,157	\$5,508,170	10.3%	\$19,279,973	\$17,225,680	\$2,054,293	11.9%	\$78,503,300	\$70,940,837	\$7,562,463	10.7%
7	10/13/2012	\$57,075,606	\$51,942,121	\$5,133,485	9.9%	\$18,638,467	\$17,854,980	\$783,487	4.4%	\$75,714,073	\$69,797,101	\$5,916,972	8.5%
8	10/20/2012	\$56,630,134	\$52,837,769	\$3,792,365	7.2%	\$18,998,943	\$19,558,519	(\$559,577)	-2.9%	\$75,629,077	\$72,396,288	\$3,232,789	4.5%
9	10/27/2012	\$55,789,743	\$52,206,644	\$3,583,099	6.9%	\$20,130,190	\$21,504,565	(\$1,374,376)	-6.4%	\$75,919,933	\$73,711,209	\$2,208,724	3.0%
10	11/3/2012	\$58,142,777	\$56,265,310	\$1,877,467	3.3%	\$20,638,008	\$20,870,086	(\$232,079)	-1.1%	\$78,780,785	\$77,135,396	\$1,645,389	2.1%
11	11/10/2012	\$57,484,804	\$55,682,645	\$1,802,159	3.2%	\$20,862,872	\$17,862,404	\$3,000,468	16.8%	\$78,347,676	\$73,545,049	\$4,802,627	6.5%
12	11/17/2012	\$55,805,228	\$54,978,079	\$827,149	1.5%	\$21,660,705	\$17,879,985	\$3,780,721	21.1%	\$77,465,933	\$72,858,064	\$4,607,870	6.3%
13	11/24/2012	\$61,331,977	\$53,942,448	\$7,389,529	13.7%	\$27,172,853	\$16,877,145	\$10,295,708	61.0%	\$88,504,830	\$70,819,593	\$17,685,237	25.0%
14	12/1/2012	\$58,420,598	\$57,153,469	\$1,267,129	2.2%	\$62,797,943	\$18,298,636	\$44,499,307	243.2%	\$121,218,541	\$75,452,105	\$45,766,436	60.7%
15	12/8/2012	\$62,489,745	\$55,318,284	\$7,171,461	13.0%	\$19,630,155	\$19,033,326	\$596,829	3.1%	\$82,119,900	\$74,351,610	\$7,768,290	10.4%
16	12/15/2012	\$59,661,880	\$58,612,629	\$1,049,251	1.8%	\$20,064,982	\$20,045,279	\$19,704	0.1%	\$79,726,862	\$78,657,908	\$1,068,955	1.4%
17	12/22/2012	\$63,556,886	\$60,628,256	\$2,928,630	4.8%	\$19,084,653	\$22,572,986	(\$3,488,333)	-15.5%	\$82,641,539	\$83,201,242	(\$559,703)	-0.7%
18	12/29/2012	\$63,547,886	\$63,065,007	\$482,879	0.8%	\$17,359,874	\$19,948,521	(\$2,588,647)	-13.0%	\$80,907,760	\$83,013,528	(\$2,105,768)	-2.5%
19	1/5/2013	\$60,452,721	\$60,479,896	(\$27,175)	0.0%	\$18,833,047	\$17,331,888	\$1,501,159	8.7%	\$79,285,768	\$77,811,784	\$1,473,984	1.9%
20	1/12/2013	\$58,862,997	\$57,689,526	\$1,173,471	2.0%	\$18,879,167	\$17,568,732	\$1,310,435	7.5%	\$77,742,164	\$75,258,258	\$2,483,906	3.3%
21	1/19/2013	\$58,494,057	\$58,704,854	(\$210,797)	-0.4%	\$19,258,004	\$19,886,540	(\$628,537)	-3.2%	\$77,752,061	\$78,591,394	(\$839,334)	-1.1%
22	1/26/2013		\$57,611,325				\$20,641,697				\$78,253,022		
23	2/2/2013		\$65,553,366				\$23,689,855				\$89,243,221		
24	2/9/2013		\$75,070,485				\$28,361,583				\$103,432,068		
25	2/16/2013		\$66,679,947				\$19,588,615				\$86,268,562		
26	2/23/2013		\$64,868,899				\$19,965,388				\$84,834,287		
27	3/2/2013		\$67,135,065				\$20,947,181				\$88,082,246		
28	3/9/2013		\$68,299,006				\$22,152,639				\$90,451,645		
29	3/16/2013		\$65,013,692				\$23,351,718				\$88,365,410		
30	3/23/2013		\$64,035,255				\$27,416,609				\$91,451,864		
31	3/30/2013		\$65,135,991				\$84,628,987				\$149,764,978		
32	4/6/2013		\$66,860,957				\$19,899,400				\$86,760,357		
33	4/13/2013		\$64,028,898				\$20,220,141				\$84,249,039		
34	4/20/2013		\$63,623,892				\$20,974,282				\$84,598,174		
35	4/27/2013		\$61,743,623				\$20,267,388				\$82,011,011		
36	5/4/2013		\$64,851,962				\$20,642,982				\$85,494,944		
37	5/11/2013		\$65,472,556				\$19,140,768				\$84,613,324		
38	5/18/2013		\$60,572,658				\$18,342,814				\$78,915,472		
39	5/25/2013		\$58,959,028				\$18,618,060				\$77,577,088		
40	6/1/2013		\$57,409,086				\$19,014,645				\$76,423,731		
41	6/8/2013		\$59,845,545				\$20,527,958				\$80,373,503		
42	6/15/2013		\$57,021,498				\$19,386,186				\$76,407,684		

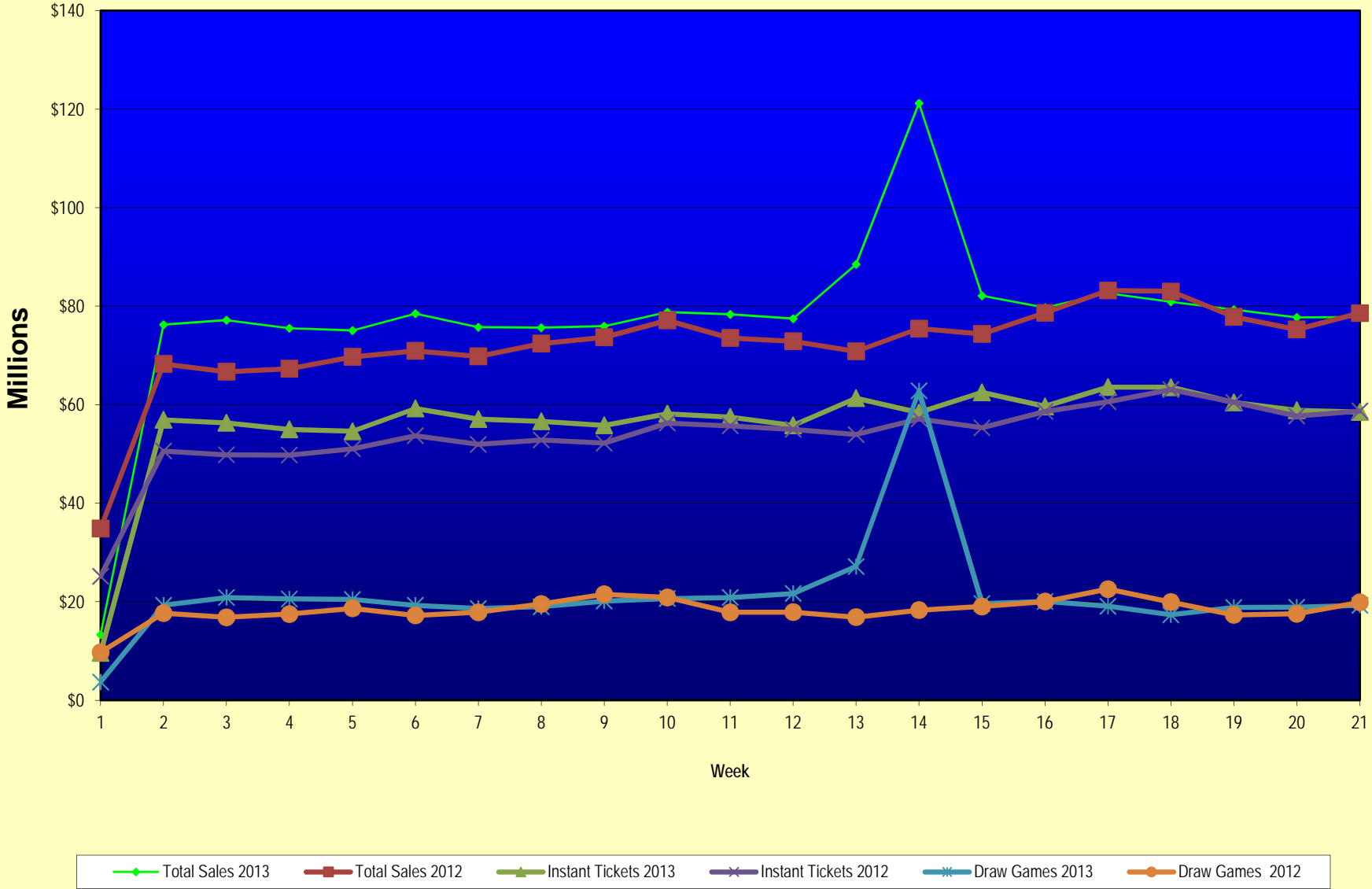
Note: Week 1 is not a full week of sales as this report is prepared on a Fiscal Year basis.

Texas Lottery Commission
Fiscal Year Over Year Change in Sales
Unaudited
FY 2013 Compared to FY 2012

Week	FY 2013 Week Ending	INSTANT TICKETS				DRAW GAMES				TOTAL SALES			
		FY 2013	FY 2012	Difference	% change - Cumulative Sales	FY 2013	FY 2012	Difference	% change - Cumulative Sales	FY 2013	FY 2012	Difference	% change - Cumulative Sales
43	6/22/2013		\$57,892,076				\$17,594,154				\$75,486,230		
44	6/29/2013		\$57,497,435				\$18,153,658				\$75,651,093		
45	7/6/2013		\$60,345,000				\$19,059,152				\$79,404,152		
46	7/13/2013		\$57,683,321				\$18,751,043				\$76,434,364		
47	7/20/2013		\$57,083,343				\$18,769,201				\$75,852,544		
48	7/27/2013		\$54,006,781				\$18,934,103				\$72,940,884		
49	8/3/2013		\$56,557,409				\$20,206,705				\$76,764,114		
50	8/10/2013		\$57,799,452				\$22,832,120				\$80,631,572		
51	8/17/2013		\$54,845,724				\$25,435,624				\$80,281,348		
52	8/24/2013		\$55,661,277				\$17,524,474				\$73,185,751		
	8/31/2013		\$47,363,984				\$14,929,528				\$62,293,512		
Total thru Current Week		\$1,179,407,442	\$1,129,612,818	\$49,794,624	4.4%	\$448,197,979	\$384,705,909	\$63,492,071	16.5%	\$1,627,605,421	\$1,514,318,727	\$113,286,695	7.5%
Fiscal Year Total		\$1,179,407,442	\$3,086,141,354			\$448,197,979	\$1,104,674,559			\$1,627,605,421	\$4,190,815,913		

** FY 2012 includes 3 days; FY 2013 includes 1 day.

Texas Lottery Commission Fiscal Year Over Year Change in Sales



Note: Week 1 is not a full week of sales as this report is prepared on a Fiscal Year basis.

Texas Lottery Commission
Instant Tickets by Price Point
Sales, Prize Expense, Sales Contribution and Payout Percentage With Year Over Year Changes
Unaudited

Fiscal Year	Price Point	# of Active Games	FY Sales	% of Instant Ticket Sales	Year over Year Change in Sales	FY Prize Expense	Year over Year Change in Prize Expense	FY Sales Contribution	Year over Year Change in Contribution	Average Prize Payout %	Year over Year Change in Payout %
2012	\$1.00	27	86,167,228	7.6%		52,884,764		33,282,464		61.4%	1.0%
thru	\$2.00	27	156,047,426	13.8%		101,450,993		54,596,433		65.0%	-0.8%
1/21/2012	\$3.00	15	138,418,605	12.3%		90,779,280		47,639,325		65.6%	0.0%
	\$5.00	36	358,808,995	31.8%		244,221,236		114,587,759		68.1%	0.2%
	\$7.00	4	18,206,384	1.6%		12,380,223		5,826,161		68.0%	0.0%
	\$10.00	15	179,026,510	15.8%		126,046,342		52,980,168		70.4%	-0.9%
	\$20.00	5	154,965,020	13.7%		115,593,123		39,371,897		74.6%	-0.1%
	\$50.00	2	37,972,650	3.4%		29,491,960		8,480,690		77.7%	0.1%
Total		131	\$1,129,612,818			\$772,847,920		\$356,764,898		68.4%	-0.1%
2013	\$1.00	27	72,600,624	6.2%		44,671,791		27,928,833		61.5%	1.5%
thru	\$2.00	29	153,420,924	13.0%		99,738,926		53,681,998		65.0%	-0.1%
1/19/2013	\$3.00	15	148,047,432	12.6%		97,086,480		50,960,952		65.6%	0.1%
	\$5.00	44	363,157,800	30.8%		246,620,315		116,537,485		67.9%	-0.1%
	\$7.00	2	15,633,912	1.3%		10,625,842		5,008,070		68.0%	0.0%
	\$10.00	12	203,877,640	17.3%		144,191,594		59,686,046		70.7%	-0.2%
	\$20.00	7	167,420,960	14.2%		125,331,239		42,089,721		74.9%	0.1%
	\$50.00	3	55,248,150	4.7%		42,894,385		12,353,765		77.6%	0.0%
Total		139	\$1,179,407,442			\$811,160,572		\$368,246,870		68.8%	0.2%
Variance	\$1.00	0	-13,566,604		-15.7%	-8,212,972	-15.5%	-5,353,632	-16.1%	0.16%	
2013 to	\$2.00	2	-2,626,502		-1.7%	-1,712,067	-1.7%	-914,435	-1.7%	0.00%	
2012	\$3.00	0	9,628,827		7.0%	6,307,200	6.9%	3,321,627	7.0%	-0.01%	
	\$5.00	8	4,348,805		1.2%	2,399,079	1.0%	1,949,726	1.7%	-0.15%	
	\$7.00	-2	-2,572,472		-14.1%	-1,754,380	-14.2%	-818,092	-14.0%	-0.03%	
	\$10.00	-3	24,851,130		13.9%	18,145,252	14.4%	6,705,878	12.7%	0.32%	
	\$20.00	2	12,455,940		8.0%	9,738,116	8.4%	2,717,824	6.9%	0.27%	
	\$50.00	1	17,275,500		45.5%	13,402,425	45.4%	3,873,075	45.7%	-0.03%	
Total		8	\$49,794,624		4.4%	\$38,312,652	5.0%	\$11,481,972	3.2%	0.36%	

Notes - Instant Ticket Variances

Texas Lottery Commission
Instant Tickets by Price Point
Sales, Prize Expense, Sales Contribution and Payout Percentage With Year Over Year Changes
 Unaudited

			FY 2013		FY 2012	Difference
Sales	\$1 - \$7	1	\$752,860,692		\$757,648,638	-\$4,787,946
Prize Exp.	\$1 - \$7	1	\$498,743,354		\$501,716,495	-\$2,973,141
Sales Cont.	\$1 - \$7	1	\$254,117,338		\$255,932,143	-\$1,814,805
Prize Exp. %	\$1 - \$7	1	66.2%		66.2%	0.0%
			FY 2013		FY 2012	Difference
Sales	\$10 - \$50	2	\$426,546,750		\$371,964,180	\$54,582,570
Prize Exp.	\$10 - \$50	2	\$312,417,217		\$271,131,424	\$41,285,793
Sales Cont.	\$10 - \$50	1	\$114,129,533		\$100,832,756	\$13,296,777
Prize Exp. %	\$10 - \$50	2	73.2%		72.9%	0.4%
			FY 2013		FY 2012	Difference
Sales	Instant		\$1,179,407,442		\$1,129,612,818	\$49,794,624
Prize Exp.	Instant		\$811,160,572		\$772,847,920	\$38,312,652
Sales Cont.	Instant		\$368,246,870		\$356,764,898	\$11,481,972
Prize Exp. %	Instant		68.8%		68.4%	0.4%

			FY 2013		FY 2012	Difference
Sales	\$1 - \$10		\$956,738,332		\$936,675,148	\$20,063,184
Prize Exp.	\$1 - \$10		\$642,934,949		\$627,762,837	\$15,172,111
Sales Cont.	\$1 - \$10		\$313,803,383		\$308,912,311	\$4,891,073
Prize Exp. %	\$1 - \$10		67.2%		67.0%	0.2%
			FY 2013		FY 2012	Difference
Sales	\$20 - \$50		\$222,669,110		\$192,937,670	\$29,731,440
Prize Exp.	\$20 - \$50		\$168,225,623		\$145,085,082	\$23,140,541
Sales Cont.	\$20 - \$50		\$54,443,487		\$47,852,588	\$6,590,899
Prize Exp. %	\$20 - \$50		75.5%		75.2%	0.4%
			FY 2013		FY 2012	Difference
Sales	Instant		\$1,179,407,442		\$1,129,612,818	\$49,794,624
Prize Exp.	Instant		\$811,160,572		\$772,847,920	\$38,312,652
Sales Cont.	Instant		\$368,246,870		\$356,764,898	\$11,481,972
Prize Exp. %	Instant		68.8%		68.4%	0.4%

Texas Lottery Commission
 Weekly Sales Summary
 & Comparison to Previous Week
 Unaudited

	Week Ending 01/19/2013		Week Ending 01/12/2013			
	<u>THIS WEEK</u>	% of Sales	<u>LAST WEEK</u>	% of Sales	<u>\$ change</u>	<u>% change</u>
Total Sales	<u>\$77,752,061</u>		<u>\$77,742,164</u>		<u>\$9,897</u>	0.01%
Instant Tickets	<u>\$58,494,057</u>	75.2%	<u>\$58,862,997</u>	75.7%	<u>-\$368,940</u>	-0.63%
Lotto	\$2,670,967	3.4%	\$2,588,023	3.3%	\$82,944	3.20%
Pick 3	\$5,115,846	6.6%	\$4,974,232	6.4%	\$141,614	2.85%
Pick 3 Sum It Up	\$99,182	0.1%	\$92,872	0.1%	\$6,310	6.79%
Cash Five	\$1,069,099	1.4%	\$1,079,444	1.4%	-\$10,345	-0.96%
Texas Two Step	\$906,490	1.2%	\$1,622,926	2.1%	-\$716,436	-44.14%
Mega Millions	\$2,214,850	2.8%	\$2,036,427	2.6%	\$178,423	8.76%
Megaplier	\$498,541	0.6%	\$471,998	0.6%	\$26,543	5.62%
Daily 4	\$1,374,543	1.8%	\$1,345,510	1.7%	\$29,033	2.16%
Daily 4 Sum It Up	\$87,921	0.1%	\$81,625	0.1%	\$6,296	7.71%
Powerball	\$3,323,356	4.3%	\$2,755,940	3.5%	\$567,416	20.59%
Power Play	\$408,226	0.5%	\$349,383	0.4%	\$58,843	16.84%
All or Nothing	\$1,488,984	1.9%	\$1,480,788	1.9%	\$8,196	0.55%
Total Draw Game Sales	<u>\$19,258,004</u>		<u>\$18,879,167</u>		<u>\$378,837</u>	2.01%

* Totals may not sum due to rounding.

Texas Lottery Commission
Weekly Sales Summary
Unaudited

INSTANT TICKETS
TOP TEN SELLING GAMES

For the Week Ending: 01/19/13

Rank	Price Point	Game	Sales (Millions)
1	\$ 10	10X MEGA MONEY	\$ 4.914
2	\$ 5	\$100,000 WINNINGS	\$ 2.784
3	\$ 5	INSTANT RICHES	\$ 2.575
4	\$ 20	\$500 MILLION EXTREME CASH BLAST	\$ 2.340
5	\$ 3	LOTERIA TEXAS	\$ 2.189
6	\$ 3	BONUS CASHWORD	\$ 2.052
7	\$ 50	\$7,500,000 FORTUNE	\$ 2.037
8	\$ 5	GOLDEN SPADES	\$ 2.034
9	\$ 2	HIT \$100	\$ 1.927
10	\$ 10	\$200 MILLION CASH SPECTACULAR	\$ 1.762

Texas Lottery Commission
Prize Payout Tracking Report
Unaudited

Through Week Ending 01/19/13

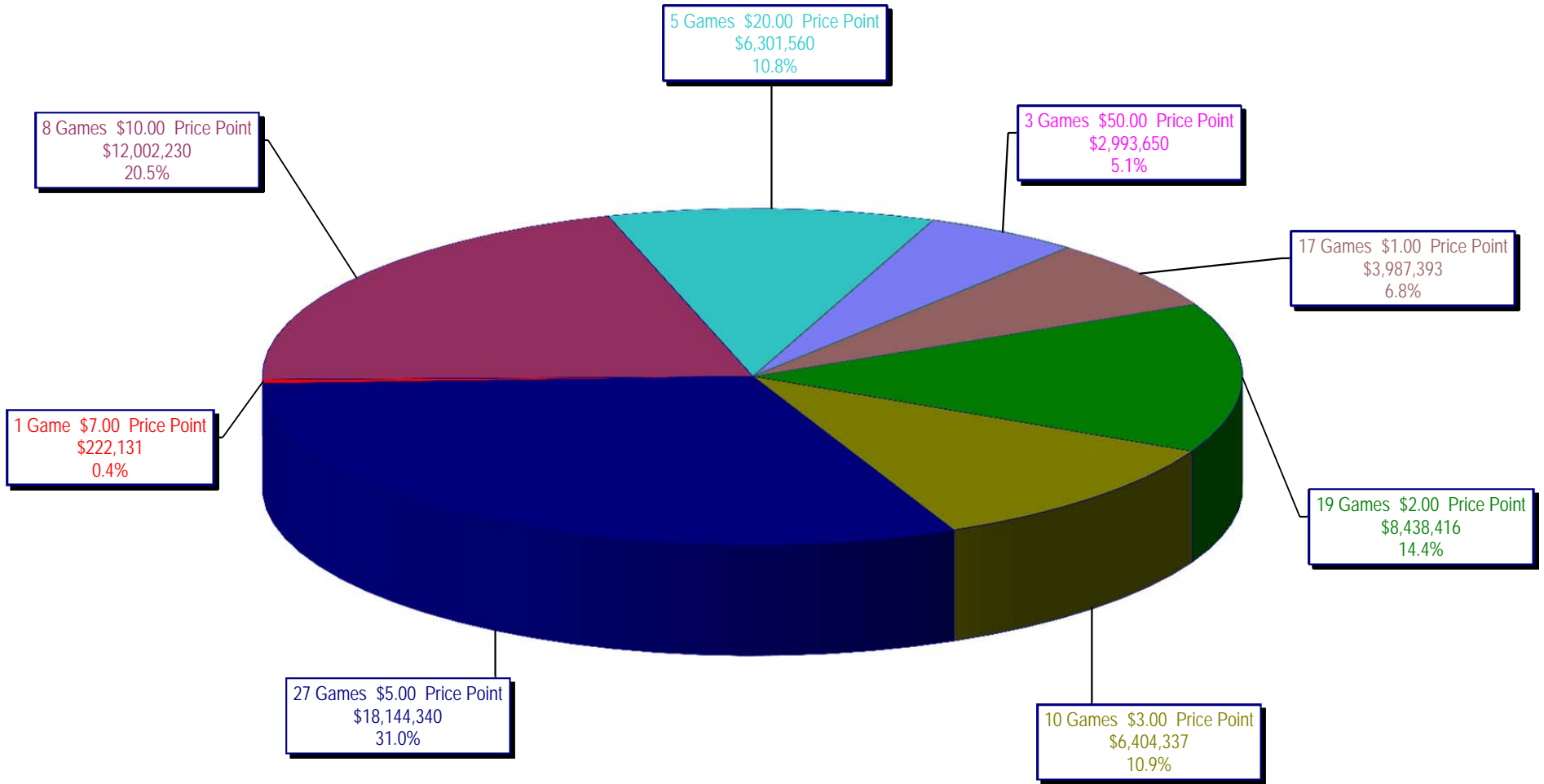
Draw Game Sales

		FY Sales Through Week Ending 1/19/2013		FY Prize Expense Through Week Ending 1/19/2013	Actual* Prize Payout	Base Payout (Prize Pool)
Lotto	\$	61,128,228	\$	42,306,356	69.21%	50.00%
Pick 3		102,693,790		53,862,230	52.45%	50.00%
Pick 3 Sum It Up		1,929,119		986,494	51.14%	50.00%
Cash Five		21,970,656		10,987,013	50.01%	50.00%
Texas Two Step		22,650,711		11,403,999	50.35%	50.00%
Mega Millions		41,000,202		20,098,767	49.02%	50.00%**
Megaplier		9,536,522		4,646,305	48.72%	N/A
Daily 4		27,080,342		12,487,050	46.11%	50.00%
Daily 4 Sum It Up		1,793,487		673,832	37.57%	50.00%
Powerball		111,732,433		59,358,443	53.13%	50.00%**
Power Play		11,158,749		6,459,772	57.89%	N/A
All or Nothing		35,523,740		21,021,388	59.18%	50.00%
Totals	\$	448,197,979	\$	244,291,649	54.51%	

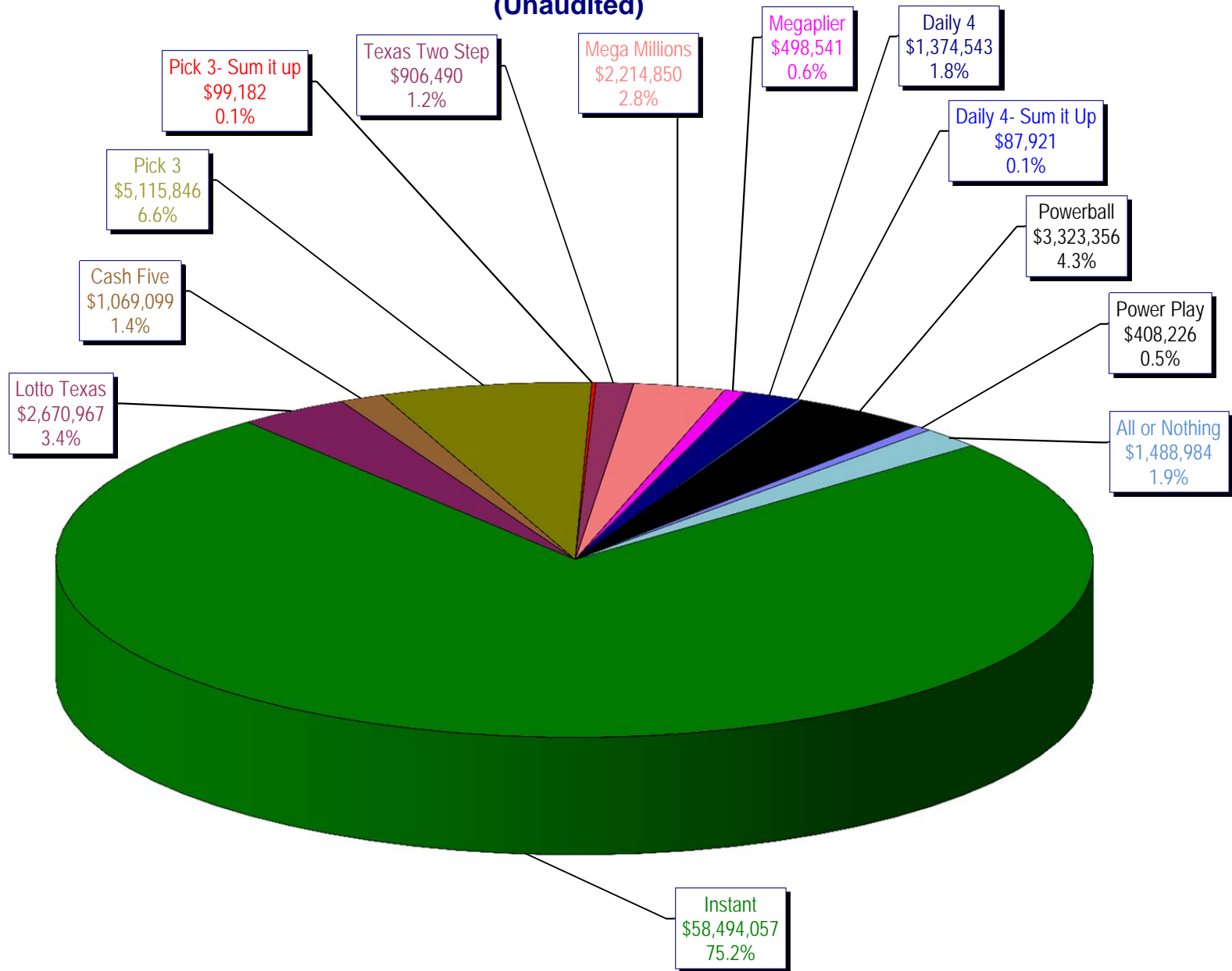
* Before Unclaimed Prizes

** Estimated; depends on # of guaranteed prizes won in Texas

Texas Lottery Commission
Instant Ticket Sales
For the Week Ending 01/19/13
(Unaudited)



**Texas Lottery Commission
All Game Sales
For the Week Ending 01/19/13
(Unaudited)**



Texas Lottery Commission - Weekly Sales Summary for FY 2013 (Unaudited)

Week Ended	Instant Games	New Games & Dates	Lotto Texas	Jackpot W S	Pick 3	Pick 3 Sum It Up	Cash Five	Texas Two Step	Jackpot M TH	Mega Millions	Jackpot T F	Megaplier	Daily 4	Daily 4 Sum It Up	Powerball	Jackpot W S	Power Play	All or Nothing	Total	Per Cap.
9/1/2012	56,975,312	1446 (\$1, N); 1444 (\$2, N) - 08/27/12	2,972,415	12 13	4,967,337	105,441	1,198,597	1,455,689	500 675	2,769,421	73 83	612,072	1,419,103	97,265	2,680,694	70 80	364,030		75,617,375	2.95
9/8/2012	56,941,761	1440 (\$2, N); 1458 (\$3, N); 1459 (\$5, N) - 09/03/12	3,005,564	14 15	5,112,132	106,959	1,185,494	1,179,003	875 200	3,140,536	93 105	665,392	1,412,279	99,861	3,002,910	90 100	395,287		76,247,178	2.97
9/15/2012	56,302,875	1452 (\$3, N) - 09/10/12	2,999,894	16 17	4,785,209	95,720	1,118,519	894,412	225 200	2,684,227	120 12	580,869	1,290,478	90,795	3,373,296	110 125	417,470	2,526,342	77,160,105	3.01
9/22/2012	54,974,438	1460 (\$1, N); 1461 (\$5, N) - 09/17/12	2,986,898	18 19	4,611,684	89,173	1,091,440	986,264	225 325	1,874,336	15 12	452,082	1,258,191	86,390	4,122,790	149 174	479,344	2,531,686	75,544,715	2.94
9/29/2012	54,606,674	1462 (\$2, N); 1472 (\$10, N) - 09/24/12	3,047,519	20 21	4,708,250	90,752	1,077,739	1,313,257	475 625	1,884,366	14 21	452,334	1,278,847	87,211	3,779,359	200 40	445,091	2,297,966	75,069,364	2.92
10/6/2012	59,223,327	1464 (\$5, N) - 10/01/12	3,164,231	22 23	4,947,571	96,251	1,121,146	1,188,386	800 200	2,055,918	28 36	482,303	1,310,612	89,270	2,266,428	50 40	312,877	2,244,980	78,503,300	3.06
10/13/2012	57,075,606	1465 (\$1, N); 1466 (\$20, N) - 10/08/2012	3,133,742	24 25	4,793,793	89,663	1,074,687	865,146	225 200	2,163,099	45 53	492,614	1,261,858	84,585	2,241,120	50 60	309,684	2,128,476	75,714,073	2.95
10/20/2012	56,630,134	1467 (\$1, N); 1468 (\$5, N) - 10/15/12	3,172,820	26 27	4,959,071	88,413	1,074,980	970,100	225 325	1,984,966	61 12	466,730	1,296,602	84,868	2,447,518	70 80	328,436	2,124,439	75,629,077	2.95
10/27/2012	55,789,743	1469 (\$2, N); 1470 (\$10, N) - 10/22/2012	3,204,694	28 29	5,550,567	96,242	1,063,201	1,226,578	450 600	1,778,725	13 21	430,528	1,381,019	91,618	2,914,062	90 100	371,273	2,021,684	75,919,933	2.96
11/3/2012	58,142,777	1503 (\$5, N) - 10/29/2012	3,392,650	30 31	5,501,964	101,742	1,078,593	860,073	200 225	1,950,117	27 32	462,385	1,393,099	93,773	3,466,242	110 124	424,170	1,913,200	78,780,785	3.07
11/10/2012	57,484,804	1475 (\$1, N); 1476 (\$3, N) - 11/05/2012	3,061,999	32 4	5,468,924	100,767	1,083,928	837,666	200 200	1,783,099	12 13	430,343	1,402,194	94,451	4,246,246	143 168	491,538	1,861,718	78,347,676	3.05
11/17/2012	55,805,228	1477 (\$2, N); 1478 (\$5, N) - 11/12/2012	2,599,190	5 6	5,248,059	91,989	1,059,723	920,319	225 300	1,841,571	19 26	440,783	1,345,121	88,391	5,638,425	185 214	615,323	1,771,812	77,465,933	3.02
11/24/2012	61,331,977	1394 (\$50, N) - 11/19/2012	2,768,876	7 8	5,086,879	91,409	1,021,878	883,407	425 200	2,003,365	33 41	472,723	1,300,693	85,037	10,768,045	250 325	1,053,006	1,637,536	88,504,830	3.45
12/1/2012	58,420,598	0	3,304,053	9 10	5,123,778	97,511	1,086,916	925,805	225 275	2,358,380	49 12	533,175	1,319,684	92,240	43,264,700	550 40	2,894,606	1,797,096	121,218,541	4.72
12/8/2012	62,489,745	1479 (\$1, N); 1485 (\$5, N) - 12/03/12	2,971,837	11 12	5,374,747	101,479	1,129,990	1,359,739	425 575	1,861,503	13 20	445,171	1,391,477	94,879	2,832,293	50 40	362,145	1,704,896	82,119,900	3.20
12/15/2012	59,661,880	0	3,087,087	13 14	5,221,374	98,173	1,104,769	1,928,422	775 1,000	1,933,357	27 35	456,193	1,398,647	88,811	2,808,938	50 40	364,704	1,574,508	79,726,862	3.11
12/22/2012	63,556,886	1481 (\$1, N); 1482 (\$2, N); 1483 (\$5, N) - 12/17/12	3,076,409	15 16	5,170,946	94,116	1,108,894	1,415,548	1,250 200	1,774,922	12 12	431,471	1,385,861	87,012	2,658,349	50 40	349,278	1,531,847	82,641,539	3.22
12/29/2012	63,547,886	0	2,869,329	17 18	4,868,470	90,224	1,041,264	922,869	200 225	1,670,747	18 25	400,587	1,289,758	79,651	2,413,294	50 40	324,222	1,389,460	80,907,760	3.15
1/5/2013	60,452,721	1484 (\$5, N) - 12/31/12	2,962,822	19 20	5,157,831	97,210	1,098,429	1,363,512	350 500	1,865,613	30 39	443,570	1,396,145	87,787	2,524,666	50 60	339,142	1,496,322	79,285,768	3.09
1/12/2013	58,862,997	1386 (\$2, N); 1536 (\$10, N) - 01/07/2013	2,588,023	4 5	4,974,232	92,872	1,079,444	1,622,926	700 900	2,036,427	47 55	471,998	1,345,510	81,625	2,755,940	70 80	349,383	1,480,788	77,742,164	3.03
1/19/2013	58,494,057	01/14/2013; 1538 (\$3, N) - 01/17/2013;	2,670,967	6 7	5,115,846	99,182	1,069,099	906,490	200 225	2,214,850	62 70	498,541	1,374,543	87,921	3,323,356	90 100	408,226	1,488,984	77,752,061	3.03
weekly change	-2.6%		-12.7%		-3.6%	-4.5%	-1.7%	19.0%		9.2%		6.4%	-3.6%	-7.0%	9.2%		3.0%	-1.0%		-1.9%
	SALES		SALES		SALES	SALES	SALES	SALES		SALES		SALES	SALES	SALES	SALES		SALES		SALES	% of Sales
Calendar Year to date	3,312,810,254		171,874,065		288,176,398	5,818,053	66,038,775	67,130,533		199,124,644		39,045,870	74,721,026	5,148,314	242,195,525		28,156,848	35,523,740	4,535,764,044	100.0%
Fiscal Year to date 2013	1,179,407,442		61,128,228		102,693,790	1,929,119	21,970,656	22,650,711		41,000,202		9,536,522	27,080,342	1,793,487	111,732,433		11,158,749	35,523,740	1,627,605,421	100.0%