



*WEEKLY SALES SUMMARY*

Unaudited

[Week Ending: 01/21/2012](#)

Texas Lottery Commission  
Fiscal Year to Date Sales Comparison  
Unaudited

Through the week ending 01/21/12 (21 weeks)

Sales by Game	FY 2010 *	FY 2011 **	FY 2012	\$ Change		% Change	
				FY 2012 to FY 2010	FY 2012 to FY 2011 to	FY 2012 to FY 2010	FY 2012 to FY 2011
Instants	\$ 1,088,803,843	\$ 1,093,503,667	\$ 1,129,612,818	\$ 40,808,975	\$ 36,109,151	3.7%	3.3%
Lotto Texas	107,707,671	67,604,967	68,708,029	-38,999,642	1,103,062	-36.2%	1.6%
Pick 3	105,977,207	106,804,028	103,806,247	-2,170,960	-2,997,781	-2.0%	-2.8%
Pick 3 Sum It Up	2,102,901	2,168,386	2,115,490	12,589	-52,896	0.6%	-2.4%
Cash Five	26,743,954	25,391,072	25,348,032	-1,395,922	-43,040	-5.2%	-0.2%
Texas Two Step	18,108,661	18,966,909	24,109,046	6,000,385	5,142,137	33.1%	27.1%
Mega Millions	76,198,235	78,807,645	60,901,825	-15,296,410	-17,905,820	-20.1%	-22.7%
Megaplier	17,047,129	15,412,542	13,419,183	-3,627,946	-1,993,359	-21.3%	-12.9%
Daily 4	20,523,920	22,110,936	24,540,098	4,016,178	2,429,162	19.6%	11.0%
Daily 4 Sum It Up	1,969,085	1,739,471	1,813,710	-155,375	74,240	-7.9%	4.3%
Powerball	-	33,449,448	49,300,881	49,300,881	15,851,433	-	-
Power Play	-	8,054,531	10,643,369	10,643,369	2,588,838	-	-
<b>Total</b>	<b>\$ 1,465,182,605</b>	<b>\$ 1,474,013,601</b>	<b>\$ 1,514,318,727</b>	<b>\$ 49,136,121</b>	<b>\$ 40,305,126</b>	<b>3.4%</b>	<b>2.7%</b>

\* 2 extra days

\*\* 1 extra day

Texas Lottery Commission  
 Fiscal Year to Date Cumulative Average Sales Comparison  
 Unaudited

Through the week ending 01/21/2012 (21 weeks)

Sales by Game	FY 2010	FY 2011	FY 2012
Instant	\$ 7,508,992	\$ 7,593,775	\$ 7,899,390
Lotto Texas	742,812	469,479	480,476
Pick 3	730,877	741,695	725,918
Pick 3 Sum It Up	14,503	15,058	14,794
Cash Five	184,441	176,327	177,259
Texas Two Step	124,887	131,715	168,595
Mega Millions	525,505	547,275	425,887
Megaplier	117,566	107,032	93,840
Daily 4	141,544	153,548	171,609
Daily 4 Sum It Up	13,580	12,080	12,683
Powerball	-	232,288	344,761
Power Play	-	55,934	74,429
<b>Total</b>	<b>\$ 10,104,708</b>	<b>\$ 10,236,206</b>	<b>\$ 10,589,641</b>

thru 01/23/2010  
145 days

thru 01/22/2011  
144 days

thru 01/21/2012  
143 days

Texas Lottery Commission  
Fiscal Year Over Year Change in Sales  
Unaudited  
FY 2012 Compared to FY 2011

Week	FY 2012 Week Ending	INSTANT TICKETS				ON-LINE GAMES				TOTAL SALES			
		FY 2012	FY 2011	Difference	% change - Cumulative Sales	FY 2012	FY 2011	Difference	% change - Cumulative Sales	FY 2012	FY 2011	Difference	% change - Cumulative Sales
1	9/3/2011**	\$25,147,181	\$31,659,033	(\$6,511,852)	-20.6%	\$9,704,561	\$11,430,717	(\$1,726,156)	-15.1%	\$34,851,742	\$43,089,750	(\$8,238,008)	-19.1%
2	9/10/2011	\$50,591,068	\$48,912,598	\$1,678,470	3.4%	\$17,681,853	\$16,398,160	\$1,283,693	7.8%	\$68,272,921	\$65,310,758	\$2,962,163	4.5%
3	9/17/2011	\$49,835,063	\$48,988,241	\$846,822	1.7%	\$16,842,326	\$17,166,827	(\$324,501)	-1.9%	\$66,677,389	\$66,155,068	\$522,321	0.8%
4	9/24/2011	\$49,777,138	\$48,471,310	\$1,305,828	2.7%	\$17,504,800	\$15,623,813	\$1,880,987	12.0%	\$67,281,938	\$64,095,123	\$3,186,815	5.0%
5	10/1/2011	\$51,040,274	\$50,145,138	\$895,136	1.8%	\$18,653,100	\$16,453,939	\$2,199,161	13.4%	\$69,693,374	\$66,599,077	\$3,094,297	4.6%
6	10/8/2011	\$53,715,157	\$50,918,591	\$2,796,566	5.5%	\$17,225,680	\$16,974,963	\$250,717	1.5%	\$70,940,837	\$67,893,554	\$3,047,283	4.5%
7	10/15/2011	\$51,942,121	\$49,096,011	\$2,846,110	5.8%	\$17,854,980	\$16,661,904	\$1,193,077	7.2%	\$69,797,101	\$65,757,915	\$4,039,187	6.1%
8	10/22/2011	\$52,837,769	\$50,158,946	\$2,678,823	5.3%	\$19,558,519	\$17,374,460	\$2,184,060	12.6%	\$72,396,288	\$67,533,406	\$4,862,883	7.2%
9	10/29/2011	\$52,206,644	\$49,775,287	\$2,431,357	4.9%	\$21,504,565	\$18,402,209	\$3,102,356	16.9%	\$73,711,209	\$68,177,496	\$5,533,713	8.1%
10	11/5/2011	\$56,265,310	\$53,337,848	\$2,927,462	5.5%	\$20,870,086	\$17,321,908	\$3,548,179	20.5%	\$77,135,396	\$70,659,756	\$6,475,641	9.2%
11	11/12/2011	\$55,682,645	\$52,285,479	\$3,397,166	6.5%	\$17,862,404	\$16,388,690	\$1,473,714	9.0%	\$73,545,049	\$68,674,169	\$4,870,880	7.1%
12	11/19/2011	\$54,978,079	\$52,424,036	\$2,554,043	4.9%	\$17,879,985	\$16,138,022	\$1,741,963	10.8%	\$72,858,064	\$68,562,058	\$4,296,006	6.3%
13	11/26/2011	\$53,942,448	\$51,262,518	\$2,679,930	5.2%	\$16,877,145	\$15,967,075	\$910,070	5.7%	\$70,819,593	\$67,229,593	\$3,590,000	5.3%
14	12/3/2011	\$57,153,469	\$56,385,259	\$768,210	1.4%	\$18,298,636	\$17,553,175	\$745,461	4.2%	\$75,452,105	\$73,938,434	\$1,513,671	2.0%
15	12/10/2011	\$55,318,284	\$56,540,048	(\$1,221,764)	-2.2%	\$19,033,326	\$17,703,352	\$1,329,975	7.5%	\$74,351,610	\$74,243,400	\$108,211	0.1%
16	12/17/2011	\$58,612,629	\$57,699,991	\$912,638	1.6%	\$20,045,279	\$18,465,282	\$1,579,997	8.6%	\$78,657,908	\$76,165,273	\$2,492,635	3.3%
17	12/24/2011	\$60,628,256	\$59,800,480	\$827,776	1.4%	\$22,572,986	\$19,635,771	\$2,937,215	15.0%	\$83,201,242	\$79,436,251	\$3,764,991	4.7%
18	12/31/2011	\$63,065,007	\$61,423,121	\$1,641,886	2.7%	\$19,948,521	\$26,122,257	(\$6,173,736)	-23.6%	\$83,013,528	\$87,545,378	(\$4,531,850)	-5.2%
19	1/7/2012	\$60,479,896	\$60,976,653	(\$496,757)	-0.8%	\$17,331,888	\$33,521,570	(\$16,189,682)	-48.3%	\$77,811,784	\$94,498,223	(\$16,686,439)	-17.7%
20	1/14/2012	\$57,689,526	\$50,099,433	\$7,590,093	15.2%	\$17,568,732	\$17,114,637	\$454,096	2.7%	\$75,258,258	\$67,214,070	\$8,044,189	12.0%
21	1/21/2012	\$58,704,854	\$53,143,646	\$5,561,208	10.5%	\$19,886,540	\$18,091,208	\$1,795,332	9.9%	\$78,591,394	\$71,234,854	\$7,356,540	10.3%
22	1/28/2012		\$54,096,128				\$17,446,156				\$71,542,284		
23	2/4/2012		\$53,433,592				\$17,388,581				\$70,822,173		
24	2/11/2012		\$60,277,094				\$18,233,038				\$78,510,132		
25	2/18/2012		\$61,536,763				\$19,387,518				\$80,924,281		
26	2/25/2012		\$59,046,203				\$20,054,404				\$79,100,607		
27	3/3/2012		\$60,537,060				\$19,478,807				\$80,015,867		
28	3/10/2012		\$59,997,361				\$19,601,658				\$79,599,019		
29	3/17/2012		\$57,835,554				\$21,189,563				\$79,025,117		
30	3/24/2012		\$57,911,940				\$29,729,651				\$87,641,591		
31	3/31/2012		\$60,407,139				\$19,519,264				\$79,926,403		
32	4/7/2012		\$60,704,285				\$19,455,317				\$80,159,602		
33	4/14/2012		\$57,663,398				\$17,866,867				\$75,530,265		
34	4/21/2012		\$56,740,216				\$17,429,326				\$74,169,542		
35	4/28/2012		\$58,042,011				\$17,104,548				\$75,146,559		
36	5/5/2012		\$66,509,159				\$17,744,833				\$84,253,992		
37	5/12/2012		\$53,769,716				\$17,783,942				\$71,553,658		
38	5/19/2012		\$53,704,228				\$18,623,882				\$72,328,110		
39	5/26/2012		\$52,310,134				\$19,115,921				\$71,426,055		
40	6/2/2012		\$53,256,725				\$18,462,603				\$71,719,328		
41	6/9/2012		\$54,293,614				\$17,213,019				\$71,506,633		
42	6/16/2012		\$52,688,230				\$17,534,413				\$70,222,643		

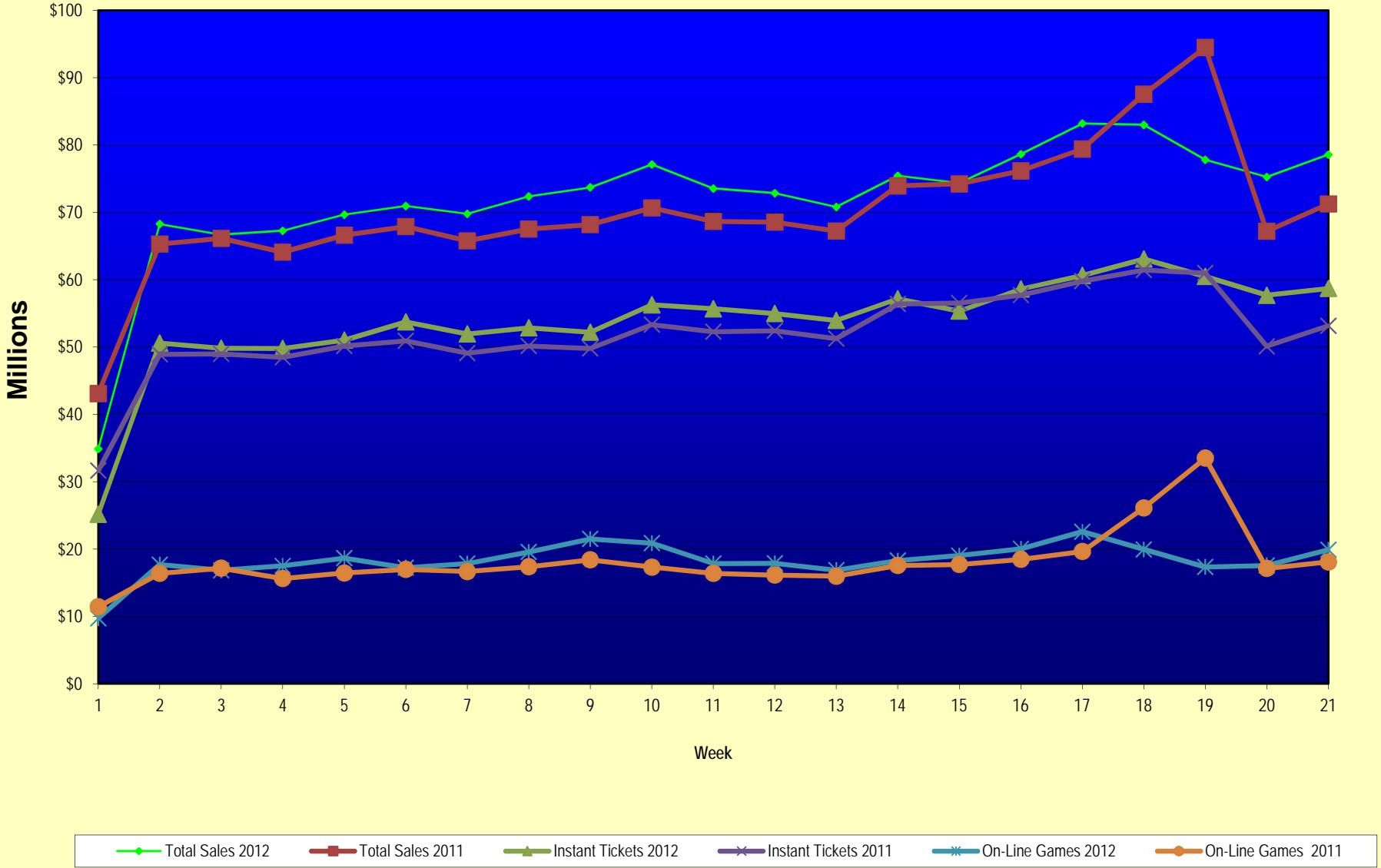
Note: Week 1 is not a full week of sales as this report is prepared on a Fiscal Year basis.

Texas Lottery Commission  
Fiscal Year Over Year Change in Sales  
Unaudited  
FY 2012 Compared to FY 2011

Week	FY 2012 Week Ending	INSTANT TICKETS				ON-LINE GAMES				TOTAL SALES			
		FY 2012	FY 2011	Difference	% change - Cumulative Sales	FY 2012	FY 2011	Difference	% change - Cumulative Sales	FY 2012	FY 2011	Difference	% change - Cumulative Sales
43	6/23/2012		\$53,174,595				\$17,086,937				\$70,261,532		
44	6/30/2012		\$53,687,509				\$18,406,785				\$72,094,294		
45	7/7/2012		\$53,054,685				\$16,211,989				\$69,266,674		
46	7/14/2012		\$51,161,290				\$16,945,733				\$68,107,023		
47	7/21/2012		\$50,807,750				\$17,362,213				\$68,169,963		
48	7/28/2012		\$51,277,179				\$18,870,764				\$70,147,943		
49	8/4/2012		\$53,320,489				\$20,922,034				\$74,242,523		
50	8/11/2012		\$50,914,022				\$19,467,124				\$70,381,146		
51	8/18/2012		\$49,905,898				\$17,419,045				\$67,324,943		
52	8/25/2012		\$49,424,242				\$16,837,474				\$66,261,716		
	8/31/2012		\$27,274,804				\$8,600,118				\$35,874,922		
Total thru Current Week		\$1,129,612,818	\$1,093,503,667	\$36,109,151	3.3%	\$384,705,909	\$380,509,934	\$4,195,975	1.1%	\$1,514,318,727	\$1,474,013,601	\$40,305,126	2.7%
Fiscal Year Total		\$1,129,612,818	\$2,842,266,680			\$384,705,909	\$969,003,455			\$1,514,318,727	\$3,811,270,135		

\*\* FY 2011 includes 4 days; FY 2012 includes 3 days

### Texas Lottery Commission Fiscal Year Over Year Change in Sales



Note: Week 1 is not a full week of sales as this report is prepared on a Fiscal Year basis.

Texas Lottery Commission  
**Instant Tickets by Price Point**  
Sales, Prize Expense, Sales Contribution and Payout Percentage With Year Over Year Changes  
Unaudited

Fiscal Year	Price Point	# of Active Games	FY Sales	% of Instant Ticket Sales	Year over Year Change in Sales	FY Prize Expense	Year over Year Change in Prize Expense	FY Sales Contribution	Year over Year Change in Contribution	Average Prize Payout %	Year over Year Change in Payout %
2011	\$1.00	27	81,650,607	7.5%		50,331,032		31,319,575		61.6%	2.6%
thru	\$2.00	27	156,057,894	14.3%		102,074,021		53,983,873		65.4%	0.4%
1/22/2011	\$3.00	17	134,203,013	12.3%		88,074,553		46,128,460		65.6%	0.1%
	\$5.00	36	351,364,410	32.1%		239,182,556		112,181,854		68.1%	0.1%
	\$7.00	7	48,303,143	4.4%		32,835,360		15,467,783		68.0%	0.0%
	\$10.00	13	143,328,690	13.1%		101,369,961		41,958,729		70.7%	1.1%
	\$20.00	5	140,725,160	12.9%		104,406,028		36,319,132		74.2%	1.4%
	\$50.00	2	37,870,750	3.5%		29,402,663		8,468,087		77.6%	4.2%
<b>Total</b>		<b>134</b>	<b>\$1,093,503,667</b>			<b>\$747,676,174</b>		<b>\$345,827,493</b>		<b>68.4%</b>	<b>0.9%</b>
2012	\$1.00	27	86,167,228	7.6%		52,884,764		33,282,464		61.4%	1.0%
thru	\$2.00	27	156,047,426	13.8%		101,450,993		54,596,433		65.0%	-0.8%
1/21/2012	\$3.00	15	138,418,605	12.3%		90,779,280		47,639,325		65.6%	0.0%
	\$5.00	36	358,808,995	31.8%		244,221,236		114,587,759		68.1%	0.2%
	\$7.00	4	18,206,384	1.6%		12,380,223		5,826,161		68.0%	0.0%
	\$10.00	15	179,026,510	15.8%		126,046,342		52,980,168		70.4%	-0.9%
	\$20.00	5	154,965,020	13.7%		115,593,123		39,371,897		74.6%	-0.1%
	\$50.00	2	37,972,650	3.4%		29,491,960		8,480,690		77.7%	0.1%
<b>Total</b>		<b>131</b>	<b>\$1,129,612,818</b>			<b>\$772,847,920</b>		<b>\$356,764,898</b>		<b>68.4%</b>	<b>-0.1%</b>
Variance	\$1.00	0	4,516,621		5.5%	2,553,731	5.1%	1,962,890	6.3%	-0.27%	
2012 to	\$2.00	0	-10,468		0.0%	-623,027	-0.6%	612,559	1.1%	-0.39%	
2011	\$3.00	-2	4,215,592		3.1%	2,704,727	3.1%	1,510,865	3.3%	-0.04%	
	\$5.00	0	7,444,585		2.1%	5,038,680	2.1%	2,405,905	2.1%	-0.01%	
	\$7.00	-3	-30,096,759		-62.3%	-20,455,138	-62.3%	-9,641,621	-62.3%	0.02%	
	\$10.00	2	35,697,820		24.9%	24,676,381	24.3%	11,021,439	26.3%	-0.32%	
	\$20.00	0	14,239,860		10.1%	11,187,095	10.7%	3,052,765	8.4%	0.40%	
	\$50.00	0	101,900		0.3%	89,297	0.3%	12,603	0.1%	0.03%	
<b>Total</b>		<b>-3</b>	<b>\$36,109,151</b>		<b>3.3%</b>	<b>\$25,171,746</b>	<b>3.4%</b>	<b>\$10,937,405</b>	<b>3.2%</b>	<b>0.05%</b>	

Notes - Instant Ticket Variances

Texas Lottery Commission  
**Instant Tickets by Price Point**  
**Sales, Prize Expense, Sales Contribution and Payout Percentage With Year Over Year Changes**  
 Unaudited

		FY 2012		FY 2011		Difference
Sales	\$1 - \$7	\$757,648,638		\$771,579,067		-\$13,930,429
Prize Exp.	\$1 - \$7	\$501,716,495		\$512,497,522		-\$10,781,027
Sales Cont.	\$1 - \$7	\$255,932,143		\$259,081,545		-\$3,149,402
Prize Exp. %	\$1 - \$7	66.2%		66.4%		-0.2%
		FY 2012		FY 2011		Difference
Sales	\$10 - \$50	\$371,964,180		\$321,924,600		\$50,039,580
Prize Exp.	\$10 - \$50	\$271,131,424		\$235,178,651		\$35,952,773
Sales Cont.	\$10 - \$50	\$100,832,756		\$86,745,949		\$14,086,807
Prize Exp. %	\$10 - \$50	72.9%		73.1%		-0.2%
		FY 2012		FY 2011		Difference
Sales	Instant	\$1,129,612,818		\$1,093,503,667		\$36,109,151
Prize Exp.	Instant	\$772,847,920		\$747,676,174		\$25,171,746
Sales Cont.	Instant	\$356,764,898		\$345,827,493		\$10,937,405
Prize Exp. %	Instant	68.4%		68.4%		0.0%

		FY 2012		FY 2011		Difference
Sales	\$1 - \$10	\$936,675,148		\$914,907,757		\$21,767,391
Prize Exp.	\$1 - \$10	\$627,762,837		\$613,867,483		\$13,895,354
Sales Cont.	\$1 - \$10	\$308,912,311		\$301,040,274		\$7,872,037
Prize Exp. %	\$1 - \$10	67.0%		67.1%		-0.1%
		FY 2012		FY 2011		Difference
Sales	\$20 - \$50	\$192,937,670		\$178,595,910		\$14,341,760
Prize Exp.	\$20 - \$50	\$145,085,082		\$133,808,690		\$11,276,392
Sales Cont.	\$20 - \$50	\$47,852,588		\$44,787,220		\$3,065,368
Prize Exp. %	\$20 - \$50	75.2%		74.9%		0.3%
		FY 2012		FY 2011		Difference
Sales	Instant	\$1,129,612,818		\$1,093,503,667		\$36,109,151
Prize Exp.	Instant	\$772,847,920		\$747,676,174		\$25,171,746
Sales Cont.	Instant	\$356,764,898		\$345,827,493		\$10,937,405
Prize Exp. %	Instant	68.4%		68.4%		0.0%



Texas Lottery Commission  
**Weekly Sales Summary**  
**& Comparison to Previous Week**  
 Unaudited

	Week Ending 01/21/2012	% of Sales	Week Ending 01/14/2012	% of Sales	\$ change	% change
	<u>THIS WEEK</u>		<u>LAST WEEK</u>			
Total Sales	<u>\$78,591,394</u>		<u>\$75,258,258</u>		<u>\$3,333,136</u>	4.43%
Instant Tickets	<u>\$58,704,854</u>	74.7%	<u>\$57,689,526</u>	76.7%	<u>\$1,015,328</u>	1.76%
Lotto	\$3,310,397	4.2%	\$3,259,338	4.3%	\$51,059	1.57%
Pick 3	\$5,033,947	6.4%	\$5,061,130	6.7%	-\$27,183	-0.54%
Pick 3 Sum It Up	\$104,874	0.1%	\$103,687	0.1%	\$1,187	1.14%
Cash Five	\$1,252,621	1.6%	\$1,270,289	1.7%	-\$17,668	-1.39%
Texas Two Step	\$1,422,729	1.8%	\$1,059,875	1.4%	\$362,854	34.24%
Mega Millions	\$2,696,266	3.4%	\$2,542,675	3.4%	\$153,591	6.04%
Megaplier	\$594,142	0.8%	\$587,013	0.8%	\$7,129	1.21%
Daily 4	\$1,204,955	1.5%	\$1,229,792	1.6%	-\$24,837	-2.02%
Daily 4 Sum It Up	\$88,136	0.1%	\$87,637	0.1%	\$500	0.57%
Powerball	\$3,611,989	4.6%	\$1,921,683	2.6%	\$1,690,306	87.96%
Power Play	\$566,485	0.7%	\$445,614	0.6%	\$120,871	27.12%
Total Online Sales	<u>\$19,886,540</u>		<u>\$17,568,732</u>		<u>\$2,317,808</u>	13.19%

\* Totals may not sum due to rounding.

Texas Lottery Commission  
Weekly Sales Summary  
Unaudited

INSTANT TICKETS  
TOP TEN SELLING GAMES

For the Week Ending : 01/21/2012

Rank	Price Point	Game	Sales (Millions)
1	\$ 10	BIG MONEY	\$ 4.049
2	\$ 20	\$500,000,000 FRENZY	\$ 3.151
3	\$ 5	CHOCOLATE	\$ 3.087
4	\$ 50	CASINO ACTION	\$ 2.800
5	\$ 5	MONEY MULTIPLIER	\$ 2.605
6	\$ 3	BONUS CASHWORD	\$ 2.084
7	\$ 20	\$500,000,000 BLOCKBUSTER	\$ 2.003
8	\$ 5	GROOVY CASH	\$ 1.966
9	\$ 3	LOTERIA	\$ 1.696
10	\$ 2	BREAK THE BANK	\$ 1.515

Texas Lottery Commission  
Prize Payout Tracking Report  
Unaudited

Through Week Ending 01/21/2012

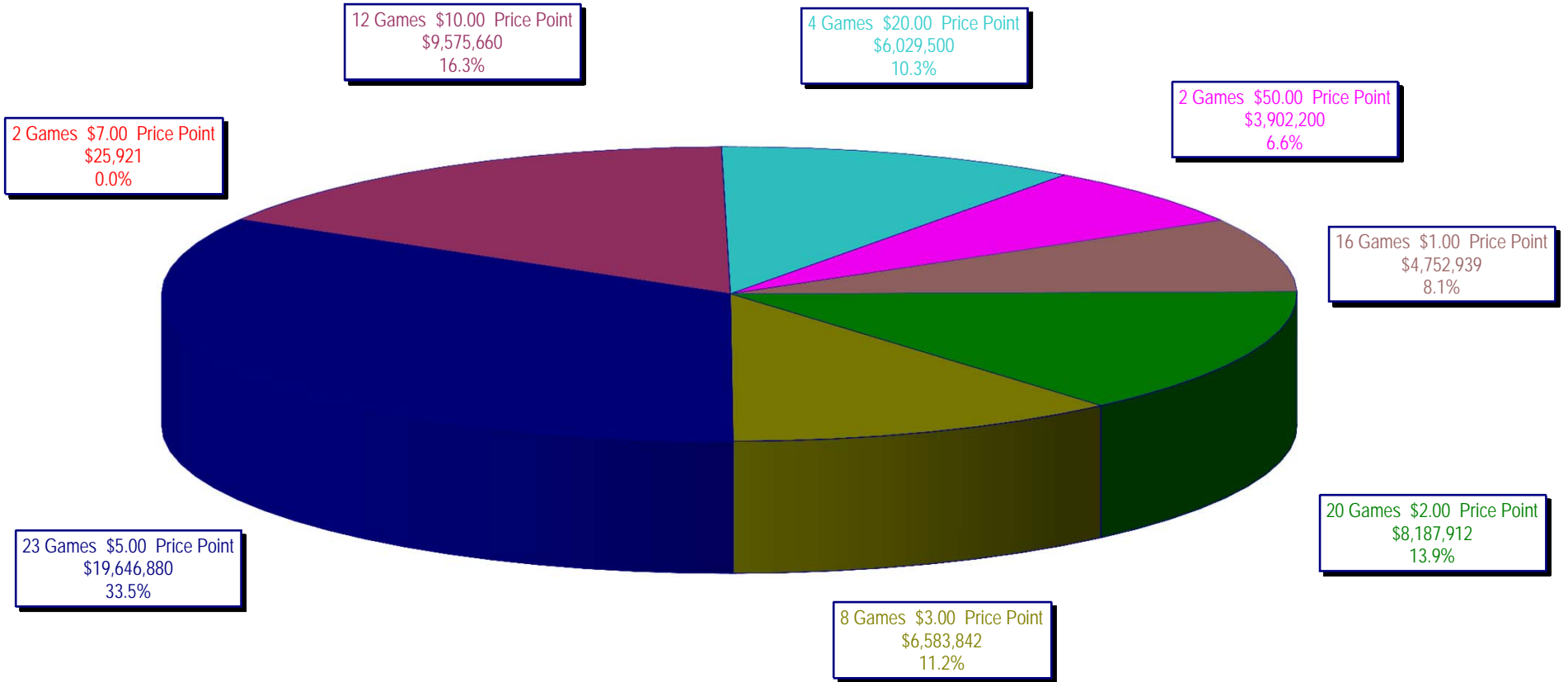
On-Line Sales

		FY Sales Through Week Ending 1/21/2012		FY Prize Expense Through Week Ending 1/21/2012	Actual* Prize Payout	Base Payout (Prize Pool)
Lotto	\$	68,708,029	\$	41,884,398	60.96%	50.00%
Pick 3		103,806,247		47,366,820	45.63%	50.00%
Pick 3 Sum It Up		2,115,490		1,008,081	47.65%	50.00%
Cash Five		25,348,032		13,129,419	51.80%	50.00%
Texas Two Step		24,109,046		12,048,975	49.98%	50.00%
Mega Millions		60,901,825		29,858,681	49.03%	50.00%**
Megaplier		13,419,183		6,860,378	51.12%	N/A
Daily 4		24,540,098		11,106,400	45.26%	50.00%
Daily 4 Sum It Up		1,813,710		722,888	39.86%	50.00%
Powerball		49,300,881		24,332,253	49.35%	50.00%**
Power Play		10,643,369		5,608,069	52.69%	N/A
<b>Totals</b>	\$	<b>384,705,909</b>	\$	<b>193,926,362</b>	<b>50.41%</b>	

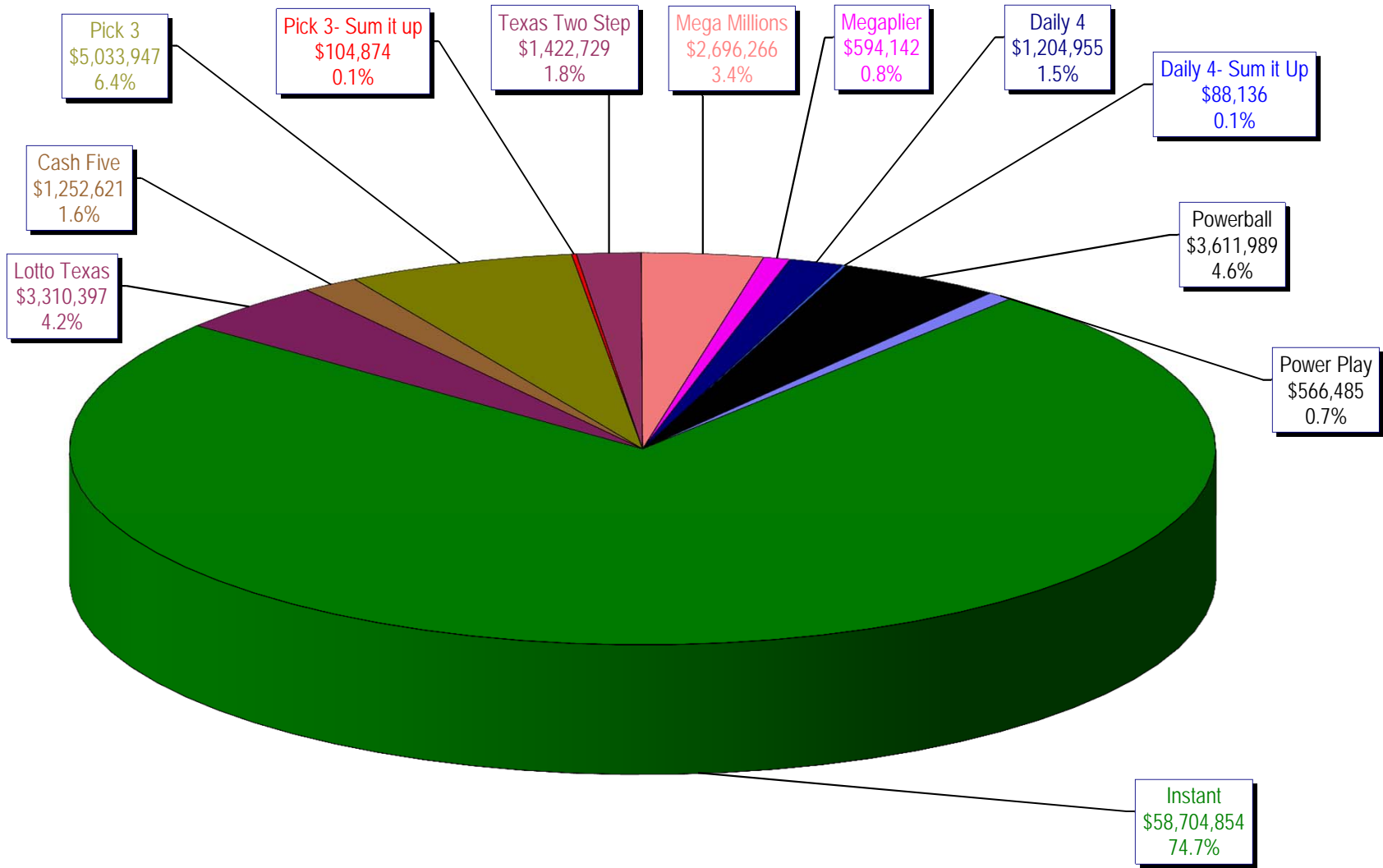
\* Before Unclaimed Prizes

\*\* Estimated; depends on # of guaranteed prizes won in Texas

Texas Lottery Commission  
Instant Ticket Sales  
For the Week Ending 01/21/12  
(Unaudited)



**Texas Lottery Commission  
All Game Sales  
For the Week Ending 01/21/12  
(Unaudited)**



Texas Lottery Commission - Weekly Sales Summary for FY 2012 (Unaudited)

Week Ended	Instant Games	New Games & Dates	Lotto Texas	Jackpot W	Jackpot S	Pick 3	Pick 3 Sum It Up	Cash Five	Texas Two Step	Jackpot M	Jackpot TH	Mega Millions	Jackpot T	Jackpot F	Megaplier	Daily 4	Daily 4 Sum It Up	Powerball	Jackpot W	Jackpot S	Power Play	Total	Per Cap.
9/3/2011	52,421,985	1340 (\$1,N); 1310 (\$2, N) - 08/29/11	3,710,974	23	24	5,228,940	100,997	1,239,134	989,988	225	300	2,248,664	21	29	539,246	1,221,178	93,318	2,401,555	75	91	530,686	70,726,664	2.81
9/10/2011	50,591,068	1360 (\$3, N) - 09/05/11	3,329,350	25	4	5,103,026	99,259	1,198,563	935,771	450	200	2,387,766	37	44	557,225	1,180,505	88,443	2,295,315	107	20	506,631	68,272,921	2.71
9/17/2011	49,835,063	0	3,031,798	5	6	4,953,079	100,990	1,210,562	961,592	225	300	2,801,526	54	65	626,459	1,125,230	83,532	1,560,522	25	20	387,037	66,677,389	2.64
9/24/2011	49,777,138	1362(\$1, N); 1363(\$5,N); 1364(\$5,N) - 09/19/11	3,083,973	7	8	4,819,453	97,999	1,200,444	1,283,472	450	600	3,206,022	75	86	692,909	1,092,294	82,198	1,561,655	25	30	384,383	67,281,938	2.67
10/1/2011	51,040,274	1365(\$2,N) - 09/26/11	3,196,730	9	10	4,846,896	97,026	1,215,715	1,146,613	800	200	4,033,330	96	113	830,660	1,096,271	83,993	1,693,809	37	47	412,058	69,693,374	2.76
10/8/2011	53,715,157	1366(\$1,N) - 10/03/11	3,231,892	11	12	5,064,771	102,919	1,252,733	1,004,251	225	300	2,176,684	12	14	527,777	1,188,636	92,825	2,103,034	58	71	480,159	70,940,837	2.81
10/15/2011	51,942,121	1367 (\$7, N) - 10/10/11	3,230,925	13	14	4,776,985	99,008	1,214,385	1,337,436	450	625	2,260,036	22	30	542,787	1,132,415	84,772	2,613,215	86	105	563,017	69,797,101	2.77
10/22/2011	52,837,769	1369 (\$1, N); 1370 (\$5, N) - 10/17/11	3,250,317	15	16	4,784,201	98,306	1,202,768	1,887,302	825	1,050	2,386,255	39	48	561,705	1,130,353	83,722	3,477,867	124	148	695,724	72,396,288	2.87
10/29/2011	52,206,644	1371 (\$2, N) - 10/24/11	3,302,201	17	18	4,685,786	95,887	1,186,987	2,055,399	1,300	1,550	2,592,752	57	67	596,631	1,107,441	82,921	4,895,300	173	203	903,261	73,711,209	2.92
11/5/2011	56,265,310	1373 (\$10, N) - 10/31/11	3,570,825	19	20	5,165,835	105,793	1,240,514	910,036	200	200	2,497,308	78	12	583,481	1,222,706	92,619	4,617,172	245	20	863,799	77,135,396	3.06
11/12/2011	55,682,645	1375 (\$3, N); 1374 (\$1, N) - 11/07/11	3,673,137	21	22	5,298,645	109,575	1,268,630	961,349	225	200	2,362,698	15	22	552,133	1,235,272	92,025	1,861,697	25	35	447,243	73,545,049	2.92
11/19/2011	54,978,079	1376(\$2, N); 1377 (\$5, N) - 11/14/11	3,575,231	23	24	5,216,095	106,956	1,246,366	1,059,355	225	325	2,300,050	30	40	550,825	1,224,365	89,978	2,033,222	46	60	477,542	72,858,064	2.89
11/26/2011	53,942,448	1372 (\$5, N) - 11/21/11	3,499,908	25	26	4,943,420	100,352	1,179,174	998,175	500	200	2,377,399	47	55	555,760	1,215,090	90,416	1,527,546	20	25	389,905	70,819,593	2.81
12/3/2011	57,153,469	0	3,744,456	27	28	5,267,602	108,544	1,264,649	938,225	225	200	2,830,996	64	75	636,924	1,278,857	95,379	1,708,763	31	40	424,242	75,452,105	2.99
12/10/2011	55,318,284	1378 (\$1, N); 1322 (\$5, N) - 12/5/11; 1389 (\$1, N) - 12/6/11	3,666,072	29	30	5,168,509	106,265	1,243,957	1,030,979	225	325	3,462,326	87	100	736,281	1,235,834	89,131	1,850,570	52	67	443,403	74,351,610	2.95
12/17/2011	58,612,629	1383 (\$3,N) - 12/12/11	2,963,151	4	5	5,096,413	103,606	1,257,263	1,339,991	475	650	4,412,520	116	135	882,759	1,240,640	89,229	2,163,468	78	91	496,239	78,657,908	3.12
12/24/2011	60,628,256	1379 (\$1, N); 1317 (\$2, N); 1380 (\$5, N) - 12/19/11	3,265,301	6	7	5,257,800	105,568	1,269,335	943,509	200	225	5,729,832	152	173	1,095,360	1,263,815	88,757	2,933,837	104	125	619,872	83,201,242	3.30
12/31/2011	63,065,007	0	3,368,593	8	9	5,211,663	107,395	1,275,257	1,200,536	325	450	4,358,985	206	12	878,865	1,244,035	88,079	1,788,226	20	25	426,888	83,013,528	3.29
1/7/2012	60,479,896	1381 (\$5,N); 1277 (\$50,N) - 1/3/12; 1429 (\$5,N); 1401 (\$10, N) - 1/4/12	3,193,532	10	11	5,246,112	108,060	1,281,653	1,135,472	625	200	2,298,815	15	25	550,191	1,240,736	90,116	1,763,484	30	44	423,718	77,811,784	3.09
1/14/2012	57,689,526	1382 (\$2,N); 1232 (\$10, N) - 1/9/12	3,259,338	12	13	5,061,130	103,687	1,270,289	1,059,875	225	350	2,542,675	33	42	587,013	1,229,792	87,637	1,921,683	54	66	445,614	75,258,258	2.98
1/21/2012	58,704,854	1384 (\$1,N) 1385 (\$5,N) - 1/16/12	3,310,397	14	15	5,033,947	104,874	1,252,621	1,422,729	500	650	2,696,266	50	60	594,142	1,204,955	88,136	3,611,989	80	100	566,485	78,591,394	3.12
weekly change	1.8%		1.6%			-0.5%	1.1%	-1.4%	34.2%			6.0%			1.2%	-2.0%	0.6%	88.0%			27.1%	4.4%	
	<b>SALES</b>		<b>SALES</b>			<b>SALES</b>	<b>SALES</b>	<b>SALES</b>	<b>SALES</b>			<b>SALES</b>	<b>SALES</b>	<b>SALES</b>	<b>SALES</b>	<b>SALES</b>	<b>SALES</b>	<b>SALES</b>	<b>SALES</b>	<b>SALES</b>	<b>SALES</b>	<b>SALES</b>	<b>% of Sales</b>
Startup to date	43,004,971,020		10,976,714,088			4,231,166,568	25,418,823	2,346,256,693	601,943,513			1,546,333,550			353,554,354	225,542,786	24,783,150	205,692,765			46,906,714	63,797,417,994	100.0%
Calendar Year to date	176,874,276		9,763,267			15,341,189	316,621	3,804,563	3,618,076			7,537,756			1,731,346	3,675,483	265,888	7,297,156			1,435,817	231,661,436	100.0%
Fiscal Year to date 2012	1,129,612,818		68,708,029			103,806,247	2,115,490	25,348,032	24,109,046			60,901,825			13,419,183	24,540,098	1,813,710	49,300,881			10,643,369	1,514,318,727	100.0%