



WEEKLY SALES SUMMARY

Unaudited

Week Ending: 1/23/2016

Texas Lottery Commission
Fiscal Year to Date Sales Comparison
Unaudited

Through the Week Ending 1/23/2016 (21 Weeks)

Sales by Game	FY 2014 *	FY 2015 **	FY 2016	\$ Change		% Change	
				FY 2016 to FY 2014	FY 2016 to FY 2015	FY 2016 to FY 2014	FY 2016 to FY 2015
Scratch Tickets	\$ 1,286,579,469	\$ 1,334,297,496	\$ 1,411,386,374	\$ 124,806,905	\$ 77,088,878	9.7%	5.8%
Lotto Texas	53,529,243	48,596,027	53,112,710	-416,533	4,516,683	-0.8%	9.3%
Lotto Extra	6,940,985	7,371,936	8,964,522	2,023,537	1,592,586	29.2%	21.6%
Pick 3	101,184,159	99,715,222	100,068,014	-1,116,146	352,792	-1.1%	0.4%
Pick 3 Sum It Up	2,019,569	1,914,183	2,016,495	-3,074	102,313	-0.2%	5.3%
Cash Five	21,331,613	19,938,903	18,539,947	-2,791,666	-1,398,956	-13.1%	-7.0%
Texas Two Step	22,351,943	21,311,169	20,407,304	-1,944,639	-903,865	-8.7%	-4.2%
Mega Millions	96,039,938	68,824,039	53,275,666	-42,764,272	-15,548,373	-44.5%	-22.6%
Megaplier	19,772,752	15,492,622	13,198,750	-6,574,002	-2,293,872	-33.2%	-14.8%
Daily 4	33,460,060	33,825,630	34,779,569	1,319,510	953,939	3.9%	2.8%
Daily 4 Sum It Up	2,067,320	2,014,932	1,808,942	-258,378	-205,990	-12.5%	-10.2%
Powerball	85,387,397	71,942,282	292,684,985	207,297,588	220,742,703	242.8%	306.8%
Power Play	10,183,492	9,379,466	30,545,954	20,362,462	21,166,488	200.0%	225.7%
All or Nothing	19,183,071	15,444,862	12,427,662	-6,755,409	-3,017,200	-35.2%	-19.5%
Monopoly	- ¹	2,656,530	-	-	-2,656,530	-	-100.0%
Texas Triple Chance	-	-	11,095,105	11,095,105	11,095,105	-	-
Total	\$ 1,760,031,010	\$ 1,752,725,298	\$ 2,064,311,999	\$ 304,280,989	\$ 311,586,701	17.3%	17.8%

* 2 extra days

** 1 extra day

¹ Monopoly sales were suspended after draw on 12/12/14

Texas Lottery Commission
Fiscal Year to Date Cumulative Average Sales Comparison
Unaudited

Through the Week Ending 1/23/2016 (21 Weeks)

Sales by Game	FY 2014	FY 2015	FY 2016
Scratch Tickets	\$ 8,752,241	\$ 9,139,024	\$ 9,733,699
Lotto Texas	364,145	332,850	366,295
Lotto Extra	47,218	50,493	61,824
Pick 3	688,328	682,981	690,124
Pick 3 Sum It Up	13,739	13,111	13,907
Cash Five	145,113	136,568	127,862
Texas Two Step	152,054	145,967	140,740
Mega Millions	653,333	471,398	367,418
Megaplier	134,509	106,114	91,026
Daily 4	227,619	231,682	239,859
Daily 4 Sum It Up	14,063	13,801	12,475
Powerball	580,867	492,755	2,018,517
Power Play	69,275	64,243	210,662
All or Nothing	130,497	105,787	85,708
Monopoly	- **	48,301	-
Texas Triple Chance	-	-	* 93,236
Total	\$ <u>11,973,000</u>	\$ <u>12,035,073</u>	\$ <u>14,253,353</u>

thru 1/25/2014
147 days

**

thru 1/24/2015
146 days
55 days

*

thru 1/23/2016
145 days
119 days

Texas Lottery Commission
Fiscal Year Over Year Change in Sales
Unaudited
FY 2016 Compared to FY 2015

			SCRATCH TICKETS				DRAW GAMES				TOTAL SALES			
FY 2016			% change -				% change -				% change -			
Week	Week	Ending	FY 2016	FY 2015	Difference	Cumulative Sales	FY 2016	FY 2015	Difference	Cumulative Sales	FY 2016	FY 2015	Difference	Cumulative Sales
1	9/5/2015 *		\$49,534,249	\$54,911,801	(\$5,377,552)	-9.8%	\$17,091,724	\$17,482,488	(\$390,765)	-2.2%	\$66,625,973	\$72,394,289	(\$5,768,317)	-8.0%
2	9/12/2015		\$61,566,291	\$61,436,533	\$129,758	0.2%	\$20,630,922	\$19,097,081	\$1,533,841	8.0%	\$82,197,213	\$80,533,614	\$1,663,599	2.1%
3	9/19/2015		\$63,530,657	\$60,959,234	\$2,571,423	4.2%	\$20,327,253	\$20,567,894	(\$240,641)	-1.2%	\$83,857,910	\$81,527,128	\$2,330,782	2.9%
4	9/26/2015		\$61,731,400	\$59,710,056	\$2,021,344	3.4%	\$22,252,290	\$19,920,828	\$2,331,462	11.7%	\$83,983,690	\$79,630,884	\$4,352,806	5.5%
5	10/3/2015		\$67,048,415	\$62,119,854	\$4,928,561	7.9%	\$25,436,791	\$18,531,421	\$6,905,370	37.3%	\$92,485,206	\$80,651,275	\$11,833,931	14.7%
6	10/10/2015		\$66,049,706	\$61,253,665	\$4,796,041	7.8%	\$18,138,977	\$18,985,332	(\$846,355)	-4.5%	\$84,188,683	\$80,238,997	\$3,949,687	4.9%
7	10/17/2015		\$65,073,593	\$60,230,048	\$4,843,545	8.0%	\$17,776,414	\$19,538,402	(\$1,761,988)	-9.0%	\$82,850,007	\$79,768,450	\$3,081,558	3.9%
8	10/24/2015		\$64,087,437	\$62,384,112	\$1,703,325	2.7%	\$18,450,464	\$21,475,643	(\$3,025,179)	-14.1%	\$82,537,901	\$83,859,755	(\$1,321,854)	-1.6%
9	10/31/2015		\$66,025,374	\$63,404,713	\$2,620,661	4.1%	\$19,568,150	\$23,568,817	(\$4,000,668)	-17.0%	\$85,593,524	\$86,973,530	(\$1,380,007)	-1.6%
10	11/7/2015		\$68,137,192	\$65,486,719	\$2,650,473	4.0%	\$20,398,351	\$23,749,032	(\$3,350,681)	-14.1%	\$88,535,543	\$89,235,751	(\$700,208)	-0.8%
11	11/14/2015		\$65,449,428	\$61,745,521	\$3,703,907	6.0%	\$20,169,382	\$17,449,604	\$2,719,779	15.6%	\$85,618,810	\$79,195,125	\$6,423,686	8.1%
12	11/21/2015		\$68,364,421	\$66,353,583	\$2,010,838	3.0%	\$17,174,606	\$17,108,084	\$66,522	0.4%	\$85,539,027	\$83,461,667	\$2,077,360	2.5%
13	11/28/2015		\$61,091,628	\$60,471,184	\$620,444	1.0%	\$17,168,993	\$17,303,129	(\$134,136)	-0.8%	\$78,260,621	\$77,774,313	\$486,309	0.6%
14	12/5/2015		\$67,830,827	\$66,648,696	\$1,182,131	1.8%	\$19,252,418	\$18,862,425	\$389,994	2.1%	\$87,083,245	\$85,511,121	\$1,572,125	1.8%
15	12/12/2015		\$68,324,452	\$65,708,630	\$2,615,822	4.0%	\$19,529,408	\$18,649,598	\$879,811	4.7%	\$87,853,860	\$84,358,228	\$3,495,633	4.1%
16	12/19/2015		\$71,041,258	\$68,551,298	\$2,489,960	3.6%	\$20,824,840	\$19,051,100	\$1,773,740	9.3%	\$91,866,098	\$87,602,398	\$4,263,700	4.9%
17	12/26/2015		\$78,125,965	\$73,858,618	\$4,267,347	5.8%	\$22,586,417	\$20,006,357	\$2,580,061	12.9%	\$100,712,382	\$93,864,975	\$6,847,408	7.3%
18	1/2/2016		\$76,712,975	\$67,733,268	\$8,979,707	13.3%	\$27,972,880	\$21,355,167	\$6,617,714	31.0%	\$104,685,855	\$89,088,435	\$15,597,421	17.5%
19	1/9/2016		\$77,136,541	\$64,745,641	\$12,390,900	19.1%	\$127,289,478	\$22,265,347	\$105,024,131	471.7%	\$204,426,019	\$87,010,988	\$117,415,031	134.9%
20	1/16/2016		\$73,858,865	\$64,015,166	\$9,843,699	15.4%	\$140,104,126	\$23,694,617	\$116,409,509	491.3%	\$213,962,991	\$87,709,783	\$126,253,208	143.9%
21	1/23/2016		\$70,665,700	\$62,569,156	\$8,096,544	12.9%	\$20,781,745	\$19,765,442	\$1,016,303	5.1%	\$91,447,445	\$82,334,598	\$9,112,847	11.1%
22	1/30/2016			\$68,001,588				\$22,877,000				\$90,878,588		
23	2/6/2016			\$75,677,650				\$31,662,209				\$107,339,859		
24	2/13/2016			\$75,368,712				\$46,091,747				\$121,460,459		
25	2/20/2016			\$74,833,076				\$19,865,172				\$94,698,248		
26	2/27/2016			\$69,918,013				\$19,735,352				\$89,653,365		
27	3/5/2016			\$74,848,961				\$19,946,068				\$94,795,029		
28	3/12/2016			\$70,079,409				\$20,044,562				\$90,123,971		
29	3/19/2016			\$70,368,686				\$18,480,795				\$88,849,481		
30	3/26/2016			\$70,280,600				\$17,595,205				\$87,875,805		
31	4/2/2016			\$74,369,952				\$18,378,917				\$92,748,869		
32	4/9/2016			\$67,416,817				\$18,594,844				\$86,011,661		
33	4/16/2016			\$68,393,316				\$18,104,632				\$86,497,948		
34	4/23/2016			\$70,078,182				\$17,957,150				\$88,035,332		
35	4/30/2016			\$71,744,718				\$18,961,113				\$90,705,831		
36	5/7/2016			\$73,415,978				\$20,210,341				\$93,626,319		
37	5/14/2016			\$72,152,109				\$20,362,774				\$92,514,883		
38	5/21/2016			\$70,399,950				\$21,246,276				\$91,646,226		
39	5/28/2016			\$68,547,554				\$22,227,946				\$90,775,500		
40	6/4/2016			\$71,254,006				\$20,739,703				\$91,993,709		
41	6/11/2016			\$65,878,375				\$17,216,403				\$83,094,778		
42	6/18/2016			\$66,658,742				\$17,340,531				\$83,999,273		

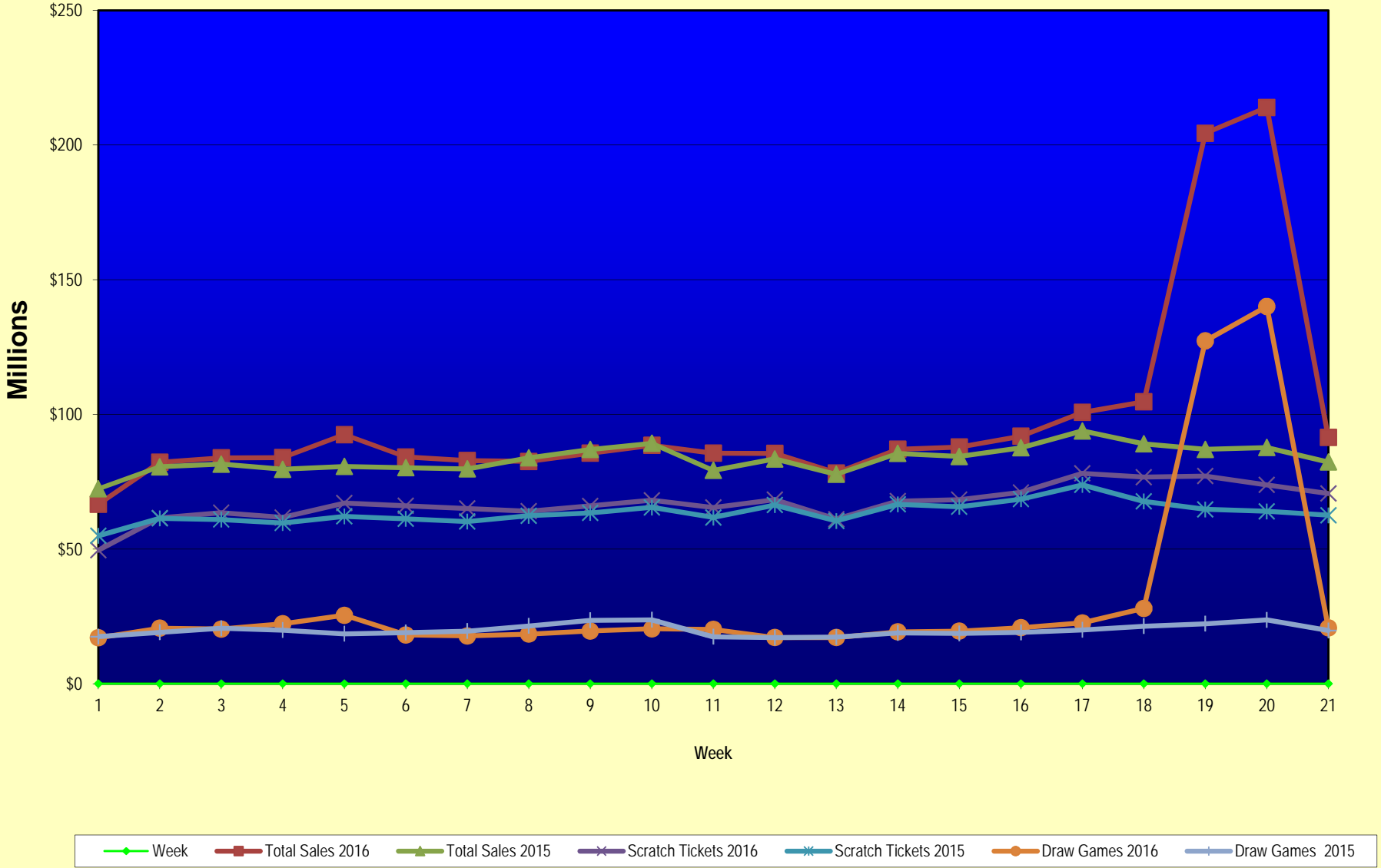
Texas Lottery Commission
Fiscal Year Over Year Change in Sales
Unaudited
FY 2016 Compared to FY 2015

			SCRATCH TICKETS				DRAW GAMES				TOTAL SALES			
FY 2016			FY 2016	FY 2015	Difference	% change - Cumulative Sales	FY 2016	FY 2015	Difference	% change - Cumulative Sales	FY 2016	FY 2015	Difference	% change - Cumulative Sales
Week	Week	Ending												
43	6/25/2016			\$65,282,276				\$16,873,368				\$82,155,644		
44	7/2/2016			\$67,757,752				\$18,007,540				\$85,765,292		
45	7/9/2016			\$64,718,254				\$18,203,985				\$82,922,239		
46	7/16/2016			\$64,957,977				\$18,792,785				\$83,750,762		
47	7/23/2016			\$62,541,241				\$18,229,965				\$80,771,206		
48	7/30/2016			\$66,468,460				\$17,742,489				\$84,210,949		
49	8/6/2016			\$62,412,598				\$17,331,374				\$79,743,972		
50	8/13/2016			\$62,089,389				\$17,501,599				\$79,590,988		
51	8/20/2016			\$62,437,148				\$17,779,458				\$80,216,606		
52	8/27/2016			\$61,403,206				\$18,529,560				\$79,932,766		
	8/31/2016 **			\$17,309,621				\$3,279,958				\$20,589,579		
Total thru Current Week			\$1,411,386,374	\$1,334,297,496	\$77,088,878	5.8%	\$652,925,625	\$418,427,802	\$234,497,823	56.0%	\$2,064,311,999	\$1,752,725,298	\$311,586,701	17.8%
Fiscal Year Total			\$1,411,386,374	\$3,481,361,812			\$652,925,625	\$1,048,338,613			\$2,064,311,999	\$4,529,700,425		

* FY 16 includes 5 days; FY 15 includes 6 days

** FY 16 includes 4 days; FY 15 includes 2 days

Texas Lottery Commission Fiscal Year Over Year Change in Sales



Note: Week 1 is not a full week of sales as this report is prepared on a Fiscal Year basis.

Texas Lottery Commission
Scratch Tickets by Price Point
Sales, Prize Expense, Sales Contribution and Payout Percentage With Year Over Year Changes
Unaudited

Fiscal Year	Price Point	# of Active Games	FY Sales	% of Scratch Ticket Sales	Year over Year Change in Sales	FY Prize Expense	Year over Year Change in Prize Expense	FY Sales Contribution	Year over Year Change in Contribution	Average Prize Payout %	Year over Year Change in Payout %
2015	\$1.00	18	68,184,519	5.1%		41,539,901		26,644,618		60.9%	1.7%
Through	\$2.00	28	140,085,576	10.5%		92,210,513		47,875,063		65.8%	1.5%
1/24/2015	\$3.00	13	133,207,806	10.0%		87,805,793		45,402,013		65.9%	0.4%
	\$5.00	39	424,025,585	31.8%		288,059,022		135,966,563		67.9%	0.0%
	\$10.00	14	262,552,580	19.7%		185,030,246		77,522,334		70.5%	0.2%
	\$20.00	9	245,570,980	18.4%		184,106,441		61,464,539		75.0%	0.1%
	\$50.00	3	60,670,450	4.5%		47,152,136		13,518,314		77.7%	0.1%
Total		124	\$1,334,297,496			\$925,904,052		\$408,393,444		69.4%	0.7%
2016	\$1.00	15	65,010,036	4.6%		39,254,252		25,755,784		60.4%	-0.2%
thru	\$2.00	27	146,799,086	10.4%		95,600,855		51,198,231		65.1%	-0.6%
1/23/2016	\$3.00	11	108,508,707	7.7%		71,423,081		37,085,626		65.8%	-0.1%
	\$5.00	44	465,702,725	33.0%		316,413,079		149,289,646		67.9%	0.0%
	\$10.00	15	272,993,790	19.3%		191,496,399		81,497,391		70.1%	-0.2%
	\$20.00	10	284,426,180	20.2%		213,163,208		71,262,972		74.9%	0.0%
	\$50.00	3	67,945,850	4.8%		52,844,624		15,101,226		77.8%	0.0%
Total		125	\$1,411,386,374			\$980,195,499		\$431,190,876		69.4%	0.0%
Variance	\$1.00	-3	-3,174,483		-4.7%	-2,285,649	-5.5%	-888,834	-3.3%	-0.54%	
2016 to	\$2.00	-1	6,713,510		4.8%	3,390,342	3.7%	3,323,168	6.9%	-0.70%	
2015	\$3.00	-2	-24,699,099		-18.5%	-16,382,712	-18.7%	-8,316,387	-18.3%	-0.09%	
	\$5.00	5	41,677,140		9.8%	28,354,057	9.8%	13,323,083	9.8%	0.01%	
	\$10.00	1	10,441,210		4.0%	6,466,153	3.5%	3,975,057	5.1%	-0.33%	
	\$20.00	1	38,855,200		15.8%	29,056,768	15.8%	9,798,432	15.9%	-0.03%	
	\$50.00	0	7,275,400		12.0%	5,692,488	12.1%	1,582,912	11.7%	0.06%	
Total		1	\$77,088,878		5.8%	\$54,291,447	5.9%	\$22,797,431	5.6%	0.06%	

Notes - Scratch Ticket Variances

Texas Lottery Commission
Scratch Tickets by Price Point
Sales, Prize Expense, Sales Contribution and Payout Percentage With Year Over Year Changes
Unaudited

		FY 2016		FY 2015		Difference
Sales	\$1 - \$5	\$786,020,554		\$765,503,486		\$20,517,068
Prize Exp.	\$1 - \$5	\$522,691,267		\$509,615,229		\$13,076,038
Sales Cont.	\$1 - \$5	\$263,329,287		\$255,888,257		\$7,441,030
Prize Exp. %	\$1 - \$5	66.5%		66.6%		-0.1%
		FY 2016		FY 2015		Difference
Sales	\$10 - \$50	\$625,365,820		\$568,794,010		\$56,571,810
Prize Exp.	\$10 - \$50	\$457,504,232		\$416,288,823		\$41,215,409
Sales Cont.	\$10 - \$50	\$167,861,588		\$152,505,187		\$15,356,401
Prize Exp. %	\$10 - \$50	73.2%		73.2%		0.0%
		FY 2016		FY 2015		Difference
Sales	Scratch	\$1,411,386,374		\$1,334,297,496		\$77,088,878
Prize Exp.	Scratch	\$980,195,499		\$925,904,052		\$54,291,447
Sales Cont.	Scratch	\$431,190,876		\$408,393,444		\$22,797,431
Prize Exp. %	Scratch	69.4%		69.4%		0.1%

		FY 2016		FY 2015		Difference
Sales	\$1 - \$10	\$1,059,014,344		\$1,028,056,066		\$30,958,278
Prize Exp.	\$1 - \$10	\$714,187,666		\$694,645,475		\$19,542,191
Sales Cont.	\$1 - \$10	\$344,826,678		\$333,410,591		\$11,416,087
Prize Exp. %	\$1 - \$10	67.4%		67.6%		-0.1%
		FY 2016		FY 2015		Difference
Sales	\$20 - \$50	\$352,372,030		\$306,241,430		\$46,130,600
Prize Exp.	\$20 - \$50	\$266,007,833		\$231,258,577		\$34,749,256
Sales Cont.	\$20 - \$50	\$86,364,197		\$74,982,853		\$11,381,344
Prize Exp. %	\$20 - \$50	75.5%		75.5%		0.0%
		FY 2016		FY 2015		Difference
Sales	Scratch	\$1,411,386,374		\$1,334,297,496		\$77,088,878
Prize Exp.	Scratch	\$980,195,499		\$925,904,052		\$54,291,447
Sales Cont.	Scratch	\$431,190,876		\$408,393,444		\$22,797,431
Prize Exp. %	Scratch	69.4%		69.4%		0.1%

Texas Lottery Commission
Weekly Sales Summary
& Comparison to Previous Week
 Unaudited

	Week Ending 1/23/2016	% of Sales	Week Ending 1/16/2016	% of Sales	\$ change	% change
	<u>THIS WEEK</u>		<u>LAST WEEK</u>			
Total Sales	<u>\$91,447,445</u>		<u>\$213,962,991</u>		<u>-\$122,515,546</u>	<u>-57.26%</u>
Scratch Tickets	<u>\$70,665,700</u>	77.3%	<u>\$73,858,865</u>	34.5%	<u>-\$3,193,165</u>	<u>-4.32%</u>
Lotto	\$2,864,110	3.1%	\$3,543,250	1.7%	-\$679,140	-19.17%
Lotto Extra	\$492,400	0.5%	\$585,402	0.3%	-\$93,002	-15.89%
Pick 3	\$4,696,016	5.1%	\$4,666,496	2.2%	\$29,520	0.63%
Pick 3 Sum It Up	\$104,467	0.1%	\$105,064	0.0%	-\$597	-0.57%
Cash Five	\$945,128	1.0%	\$901,254	0.4%	\$43,874	4.87%
Texas Two Step	\$846,809	0.9%	\$834,973	0.4%	\$11,836	1.42%
Mega Millions	\$2,033,849	2.2%	\$2,581,249	1.2%	-\$547,400	-21.21%
Megaplier	\$535,675	0.6%	\$661,350	0.3%	-\$125,675	-19.00%
Daily 4	\$1,742,249	1.9%	\$1,658,823	0.8%	\$83,427	5.03%
Daily 4 Sum It Up	\$90,096	0.1%	\$94,886	0.0%	-\$4,790	-5.05%
Powerball	\$4,651,362	5.1%	\$112,171,706	52.4%	-\$107,520,344	-95.85%
Power Play	\$646,626	0.7%	\$11,071,288	5.2%	-\$10,424,662	-94.16%
All or Nothing	\$622,838	0.7%	\$613,248	0.3%	\$9,590	1.56%
Texas Triple Chance	\$510,120	0.6%	\$615,138	0.3%	-\$105,018	-17.07%
Total Draw Game Sales	<u>\$20,781,745</u>		<u>\$140,104,126</u>		<u>-\$119,322,381</u>	<u>-85.17%</u>

* Totals may not sum due to rounding.

Texas Lottery Commission
Weekly Sales Summary
Unaudited

SCRATCH TICKETS
TOP TEN SELLING GAMES

For the week ending: 1/23/2016

Rank	Price Point	Game	Sales (Millions)
1	\$ 20	HIT \$1,000,000	\$ 5.257
2	\$ 10	HIT \$500,000	\$ 4.371
3	\$ 5	SUPER LOTERIA	\$ 4.228
4	\$ 5	HIT \$200,000	\$ 3.918
5	\$ 10	CASHWORD MULTIPLIER	\$ 2.758
6	\$ 5	\$200,000 DOUBLE PAYDAY	\$ 2.556
7	\$ 50	DIAMOND DOLLARS	\$ 2.387
8	\$ 3	BONUS CASHWORD	\$ 2.305
9	\$ 20	\$500,000,000 CASH	\$ 2.131
10	\$ 5	\$100,000 CASHWORD-O-RAMA	\$ 2.108

Texas Lottery Commission
Prize Payout Tracking Report
Unaudited

Through the week ending: 1/23/2016

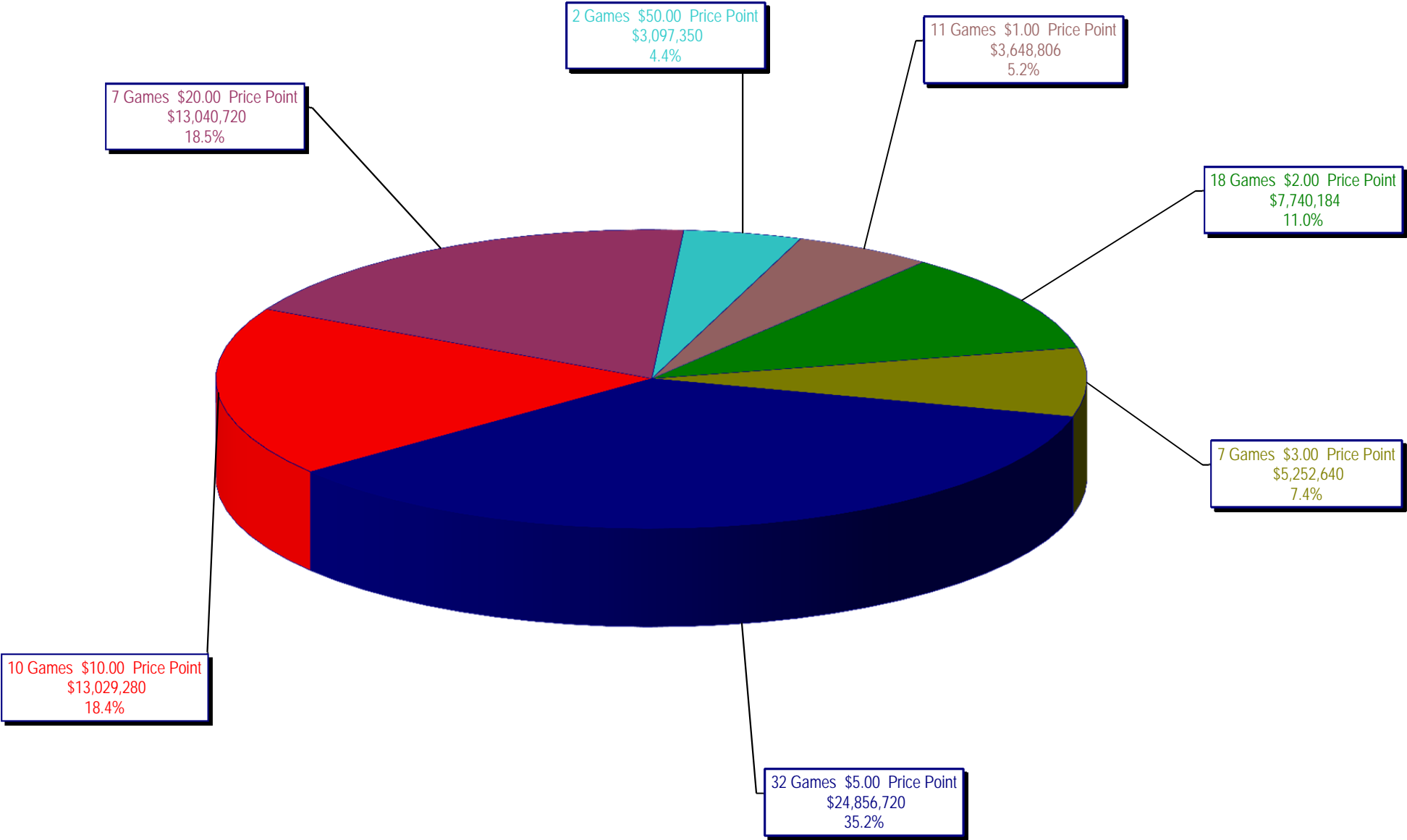
Draw Game Sales

		FY Sales Through Week Ending 1/23/2016		FY Prize Expense Through Week Ending 1/23/2016	Actual* Prize Payout	Base Payout (Prize Pool)
Lotto	\$	53,112,710	\$	32,504,973	61.20%	50.00%
Lotto Extra		8,964,522		4,615,140	51.48%	53.70%
Pick 3		100,068,014		48,761,310	48.73%	50.00%
Pick 3 Sum It Up		2,016,495		968,193	48.01%	50.00%
Cash Five		18,539,947		9,270,004	50.00%	50.00%
Texas Two Step		20,407,304		10,333,737	50.64%	50.00%
Mega Millions		53,275,666		27,340,321	51.32%	50.00%**
Megaplier		13,198,750		6,638,423	50.30%	N/A
Daily 4		34,779,569		19,758,775	56.81%	50.00%
Daily 4 Sum It Up		1,808,942		687,473	38.00%	50.00%
Powerball		292,684,985		146,477,796	50.05%	50.00%**
Power Play		30,545,954		15,286,149	50.04%	N/A
All or Nothing		12,427,662		6,544,528	52.66%	55.98%
Texas Triple Chance		11,095,105		6,951,176	62.65%	54.42%
Totals	\$	652,925,625	\$	336,137,997	51.48%	

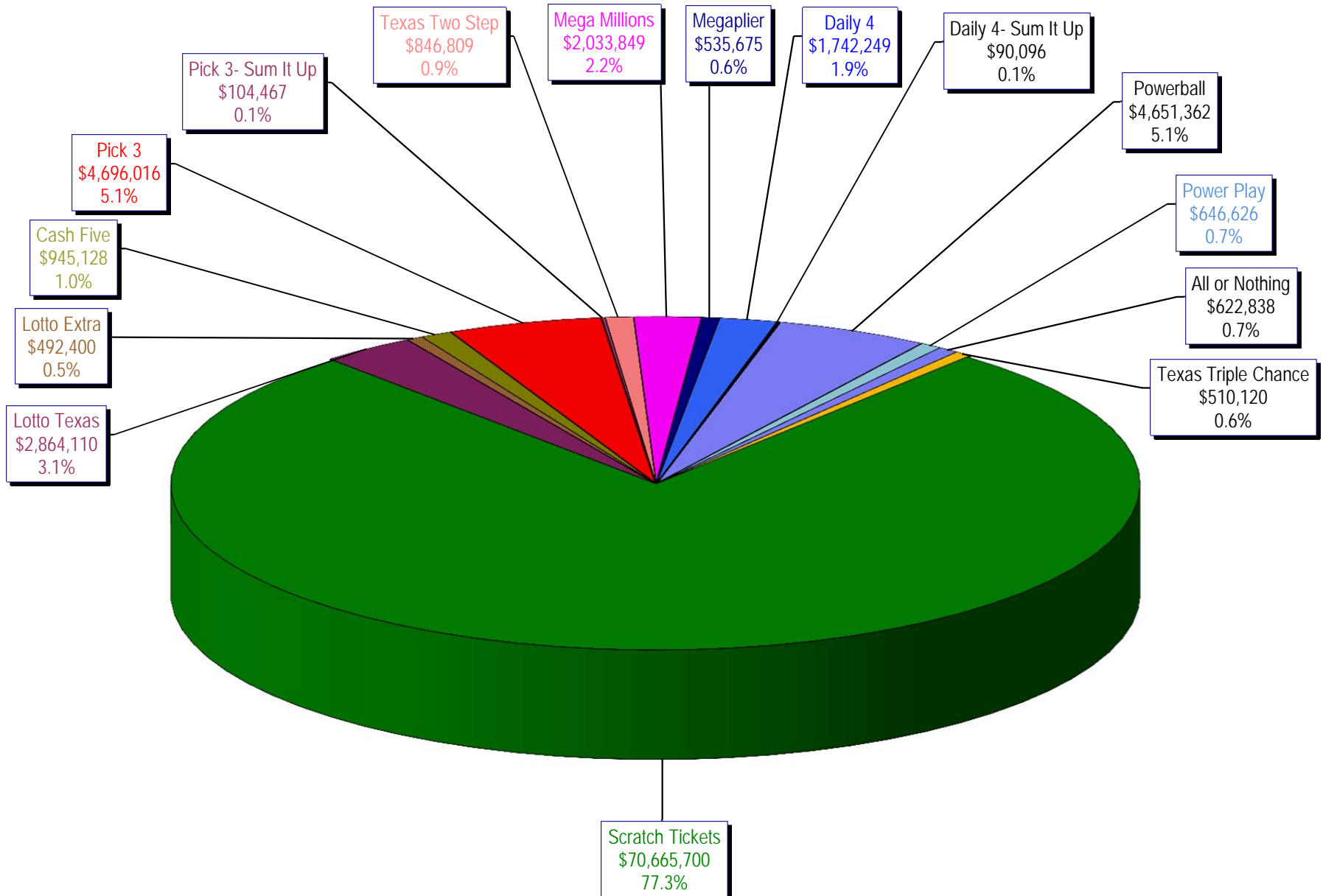
* Before Unclaimed Prizes

** Estimated; depends on # of guaranteed prizes won in Texas

Texas Lottery Commission
Scratch Ticket Sales
For the week ending 1/23/16
(Unaudited)



Texas Lottery Commission
All Game Sales
For the week ending 1/23/16
(Unaudited)



Texas Lottery Commission - Weekly Sales Summary for FY 2016 (Unaudited)

Week Ended	Scratch Tickets	New Games & Dates	Lotto Texas	Jackpot W	S	Lotto Extra	Pick 3	Pick 3 Sum It Up	Cash Five	Texas Two Step	Jackpot M	TH	Mega Millions	Jackpot T	F	Megaplier	Daily 4	Daily 4 Sum It Up	Powerball	Jackpot W	S	Power Play	All or Nothing	Texas Triple Chance	Total	Per Cap.	
9/5/2015*	66,843,870	0	2,788,509	25	26	466,121	5,249,348	117,979	956,126	1,253,100	425	575	2,366,640	74	85	608,901	1,725,027	93,067	3,586,482	120	133	484,769	675,614		87,215,551	3.24	
9/12/2015	61,566,291	1717 (\$1.N); 1718 (\$5.N); 1748 (\$10.N); 1696 (\$3.N) - 9/08/15	2,793,426	26.5	27.75	465,451	4,974,238	103,203	919,536	1,423,604	725	950	2,511,039	95	106	629,091	1,641,226	86,539	3,927,126	149	167	518,060	638,384		82,197,213	3.05	
9/19/2015	63,530,657	0	2,845,557	28.25	29.5	475,307	4,715,566	95,242	928,275	854,109	200	225	1,817,155	15	20	487,946	1,647,829	81,483	5,082,782	185	208	639,614	656,388		83,857,910	3.11	
9/26/2015	61,731,400	1720 (\$2.N); 1721 (\$5.N); 1715 (\$5.N) - 9/21/15	2,815,638	30	30.75	468,584	4,735,629	97,118	924,334	1,048,752	300	450	1,860,438	25	31	499,201	1,628,350	82,200	6,648,092	235	267	790,427	653,528		83,983,690	3.12	
10/3/2015	67,048,415	0	3,034,763	31.5	32.25	502,043	4,925,789	100,522	919,217	1,347,552	600	725	2,053,673	39	47	539,290	1,662,320	88,291	8,036,576	301	40	884,785	616,594	725,376	92,485,206	3.43	
10/10/2015	66,049,706	1722 (\$1.N); 1723 (\$5.N); 1711 (\$20.N) - 10/05/15	2,175,801	5	5.25	366,506	4,803,855	97,005	899,614	1,141,865	925	200	2,113,720	55	65	535,411	1,636,542	86,150	2,572,748	50	60	372,480	593,616	743,664	84,188,683	3.12	
10/17/2015	65,073,593	0	2,133,286	5	5	358,076	4,629,752	92,453	876,040	824,622	200	225	2,286,703	75	84	568,477	1,576,323	79,576	2,638,956	70	80	377,157	580,870	754,124	82,850,007	3.07	
10/24/2015	64,087,437	1724 (\$2.N); 1768 (\$5.N); 1726 (\$10.N) - 10/19/15	2,099,176	5.25	5.5	358,217	4,515,381	92,071	860,960	991,931	300	425	2,600,946	93	105	626,019	1,553,788	80,225	2,946,077	90	100	411,192	562,378	752,104	82,537,901	3.06	
10/31/2015	66,025,374	0	2,165,101	5.75	6	368,559	4,653,961	91,360	873,751	944,275	550	200	2,945,749	117	129	695,705	1,621,009	85,560	3,327,954	110	127	455,266	573,258	766,642	85,593,524	3.18	
11/7/2015	68,137,192	1727 (\$1.N); 1728 (\$2.N); 1729 (\$5.N) - 11/02/15	2,232,267	6.25	6.5	379,508	4,977,693	96,887	891,111	911,796	225	300	3,416,380	144	164	795,028	1,688,298	86,418	3,071,581	142	40	425,312	599,980	826,093	88,535,543	3.28	
11/14/2015	65,449,428	0	2,185,621	6.75	7	373,102	4,726,211	93,030	870,215	1,087,101	425	575	4,139,462	180	200	938,757	1,614,727	82,536	2,437,413	50	60	357,760	574,596	688,852	85,618,810	3.18	
11/21/2015	68,364,421	1730 (\$2.N); 1783 (\$2.N); 1731 (\$5.N) - 11/16/15 1778 (\$2.N) - 11/18/15	2,173,857	7.25	7.5	369,519	4,674,293	88,988	862,630	825,054	200	225	1,830,909	15	20	489,485	1,632,096	82,077	2,553,907	70	80	370,594	586,348	634,850	85,539,027	3.17	
11/28/2015	61,091,628	0	2,113,171	7.75	8.25	364,947	4,523,108	87,438	825,047	904,825	300	400	1,785,419	25	31	478,828	1,591,416	82,363	2,886,666	90	100	406,251	546,614	572,902	78,260,621	2.90	
12/5/2015	67,830,827	1733 (\$5.N) - 12/5/15	2,245,481	8.75	9.5	385,346	5,020,926	94,445	898,598	957,116	525	200	2,073,099	39	47	545,451	1,789,318	94,198	3,432,248	110	127	467,917	603,222	645,054	87,083,245	3.23	
12/12/2015	68,324,452	1751 (\$1.N); 1780 (\$2.N); 1784 (\$5.N) - 12/07/15	2,281,004	10.25	10.75	391,281	4,980,397	94,549	877,611	815,777	225	200	2,160,601	57	66	555,974	1,746,314	86,684	3,835,044	145	164	508,111	592,212	603,850	87,853,860	3.26	
12/19/2015	71,041,258	0	2,326,771	11.5	12.25	400,223	4,980,685	95,154	879,423	888,674	225	300	2,322,855	74	85	592,792	1,796,682	92,401	4,707,013	180	202	600,420	573,754	567,994	91,866,098	3.41	
12/26/2015	78,125,965	1736 (\$5.N); 1740 (\$20.N) - 12/21/15 1789 (\$3.N) - 12/22/15	2,422,285	12.75	13.5	417,003	4,863,405	91,522	860,361	1,106,519	400	550	2,624,875	94	104	637,157	1,725,445	87,146	5,941,638	227	255	728,720	548,978	531,364	100,712,382	3.74	
1/2/2016	76,712,975	0	2,598,993	14.25	15.25	446,634	4,857,347	95,570	883,605	857,640	200	225	3,175,442	117	130	756,602	1,731,866	91,457	10,213,886	300	334	1,168,791	559,472	535,576	104,685,855	3.88	
1/9/2016	77,136,541	1738 (\$1.N); 1735 (\$2.N); 1737 (\$10.N) - 1/04/16	3,569,884	16	17	580,778	4,782,398	102,725	899,480	1,029,458	300	425	4,896,815	145	165	1,100,345	1,668,434	91,670	98,440,136	500	900	8,915,982	589,972	621,402	204,426,019	7.58	
1/16/2016	73,858,865	0	3,543,250	18	19	585,402	4,666,496	105,064	901,254	834,973	200	225	2,581,249	15	22	661,350	1,658,823	94,886	112,171,706	1.5	40	11,071,288	613,248	615,138	213,962,991	7.94	
1/23/2016	70,665,700	1747 (\$5.N); 1790 (\$5.N); 1786 (\$3.N) - 1/18/16	2,864,110	19.5	20.25	492,400	4,696,016	104,467	945,128	846,809	200	225	2,033,849	30	39	535,675	1,742,249	90,096	4,651,362	50	60	646,626	622,838	510,120	91,447,445	3.39	
weekly change	-4.3%		-19.2%			-15.9%	0.6%	-0.6%	4.9%	1.4%			-21.2%			-19.0%	5.0%	-5.0%	-95.9%			-94.2%	1.6%	-17.1%	-57.3%		
	SALES		SALES			SALES	SALES	SALES	SALES	SALES			SALES	SALES	SALES	SALES	SALES	SALES	SALES	SALES	SALES	SALES	SALES	SALES	SALES	% of Sales	
Calendar Year to date	243,826,586		11,091,652			1,847,892	15,726,528	342,662	3,015,070	2,791,154			10,623,426			2,565,669	5,615,828	306,985	220,123,850			21,183,924	1,996,946	1,912,774	542,970,945	100.0%	
Fiscal Year to date 2016	1,411,386,374		53,112,710			8,964,522	100,068,014	2,016,495	18,539,947	20,407,304			53,275,666			13,198,750	34,779,569	1,808,942	292,684,985			30,545,954	12,427,662	11,095,105	2,064,311,999	100.0%	
*Full week includes 2 days from FY15																											