



WEEKLY SALES SUMMARY

Unaudited

Week Ending: 01/24/2009

Texas Lottery Commission
Fiscal Year to Date Sales Comparison
Unaudited

Through the week ending 01/24/2009 (21 weeks)

| Sales by Game | FY 2007 * | FY 2008 ** | FY 2009 | \$ Change | | % Change | |
|-------------------|-------------------------|-------------------------|-------------------------|-----------------------|-----------------------|-----------------------|-----------------------|
| | | | | FY 2009 to FY 2007 | FY 2009 to FY 2008 | FY 2009 to FY 2007 | FY 2009 to FY 2008 |
| Instant | \$ 1,138,588,044 | \$ 1,131,018,481 | \$ 1,085,115,558 | \$ -53,472,486 | \$ -45,902,923 | -4.7% | -4.1% |
| Lotto Texas | 85,034,095 | 85,801,467 | 73,045,310 | -11,988,785 | -12,756,157 | -14.1% | -14.9% |
| Pick 3 | 126,348,087 | 114,077,000 | 111,684,324 | -14,663,763 | -2,392,676 | -11.6% | -2.1% |
| Pick 3 Sum It Up | - | 2,057,325 | 2,360,959 | 2,360,959 | 303,634 | - | - |
| Cash 5 | 35,556,383 | 31,286,239 | 28,392,931 | -7,163,452 | -2,893,308 | -20.1% | -9.2% |
| Texas Two Step | 22,151,231 | 16,515,756 | 18,216,312 | -3,934,919 | 1,700,556 | -17.8% | 10.3% |
| Mega Millions | 58,735,245 | 58,846,064 | 67,430,933 | 8,695,688 | 8,584,869 | 14.8% | 14.6% |
| Megaplier | 14,411,731 | 14,656,816 | 16,064,675 | 1,652,944 | 1,407,859 | 11.5% | 9.6% |
| Daily 4 | - | 16,543,799 | 16,977,656 | 16,977,656 | 433,858 | - | 2.6% |
| Daily 4 Sum It Up | - | 4,187,665 | 2,155,811 | 2,155,811 | -2,031,854 | - | -48.5% |
| Total | \$ 1,480,824,816 | \$ 1,474,990,611 | \$ 1,421,444,468 | \$ -59,380,348 | \$ -53,546,143 | -4.0% | -3.6% |

* 3 extra days in 2007 ** 2 extra days in 2008

Texas Lottery Commission
Fiscal Year Over Year Change in Sales
Unaudited
FY 2009 Compared to FY 2008

| Week | FY 2009 Week Ending | INSTANT TICKETS | | | | ON-LINE GAMES | | | | TOTAL SALES | | | |
|------|---------------------------|-----------------|--------------|----------------|-----------------------------------|---------------|--------------|---------------|-----------------------------------|--------------|--------------|----------------|-----------------------------------|
| | | FY 2009 | FY 2008 | Difference | % change - Cumulative Sales | FY 2009 | FY 2008 | Difference | % change - Cumulative Sales | FY 2009 | FY 2008 | Difference | % change - Cumulative Sales |
| 1 | 9/6/2008** | \$44,890,104 | \$62,376,229 | (\$17,486,125) | -28.0% | \$14,722,011 | \$19,372,224 | (\$4,650,213) | -24.0% | \$59,612,115 | \$81,748,453 | (\$22,136,338) | -27.1% |
| 2 | 9/13/2008 | \$46,309,551 | \$52,458,866 | (\$6,149,315) | -20.6% | \$13,704,860 | \$16,926,163 | (\$3,221,303) | -21.7% | \$60,014,411 | \$69,385,029 | (\$9,370,618) | -20.8% |
| 3 | 9/20/2008 | \$42,923,171 | \$49,998,934 | (\$7,075,763) | -18.6% | \$12,291,263 | \$15,792,283 | (\$3,501,020) | -21.8% | \$55,214,434 | \$65,791,217 | (\$10,576,783) | -19.4% |
| 4 | 9/27/2008 | \$47,042,801 | \$49,894,175 | (\$2,851,374) | -15.6% | \$14,222,339 | \$14,800,514 | (\$578,175) | -17.9% | \$61,265,140 | \$64,694,689 | (\$3,429,549) | -16.2% |
| 5 | 10/4/2008 | \$50,747,162 | \$53,486,863 | (\$2,739,701) | -13.5% | \$15,784,472 | \$16,618,430 | (\$833,958) | -15.3% | \$66,531,634 | \$70,105,293 | (\$3,573,659) | -14.0% |
| 6 | 10/11/2008 | \$49,763,789 | \$50,918,020 | (\$1,154,231) | -11.7% | \$15,622,498 | \$15,601,410 | \$21,088 | -12.9% | \$65,386,287 | \$66,519,430 | (\$1,133,143) | -12.0% |
| 7 | 10/18/2008 | \$49,299,053 | \$50,532,253 | (\$1,233,200) | -10.5% | \$15,167,940 | \$15,682,666 | (\$514,726) | -11.6% | \$64,466,993 | \$66,214,919 | (\$1,747,926) | -10.7% |
| 8 | 10/25/2008 | \$49,977,581 | \$50,347,450 | (\$369,869) | -9.3% | \$14,525,843 | \$15,586,516 | (\$1,060,673) | -11.0% | \$64,503,424 | \$65,933,966 | (\$1,430,542) | -9.7% |
| 9 | 11/1/2008 | \$50,346,542 | \$53,953,733 | (\$3,607,191) | -9.0% | \$14,838,845 | \$16,775,983 | (\$1,937,139) | -11.1% | \$65,185,387 | \$70,729,716 | (\$5,544,330) | -9.5% |
| 10 | 11/8/2008 | \$54,860,087 | \$53,635,090 | \$1,224,997 | -7.9% | \$16,057,069 | \$15,912,791 | \$144,278 | -9.9% | \$70,917,156 | \$69,547,881 | \$1,369,275 | -8.3% |
| 11 | 11/15/2008 | \$53,484,812 | \$51,254,401 | \$2,230,411 | -6.8% | \$15,829,819 | \$15,797,076 | \$32,744 | -9.0% | \$69,314,631 | \$67,051,477 | \$2,263,155 | -7.3% |
| 12 | 11/22/2008 | \$52,806,511 | \$50,897,817 | \$1,908,694 | -5.9% | \$16,460,748 | \$15,801,720 | \$659,028 | -7.9% | \$69,267,259 | \$66,699,537 | \$2,567,722 | -6.4% |
| 13 | 11/29/2008 | \$52,199,741 | \$53,913,115 | (\$1,713,374) | -5.7% | \$17,397,576 | \$17,055,505 | \$342,072 | -7.1% | \$69,597,317 | \$70,968,620 | (\$1,371,303) | -6.0% |
| 14 | 12/6/2008 | \$56,731,851 | \$55,702,697 | \$1,029,154 | -5.1% | \$20,363,789 | \$17,900,717 | \$2,463,073 | -5.5% | \$77,095,640 | \$73,603,414 | \$3,492,227 | -5.2% |
| 15 | 12/13/2008 | \$54,109,617 | \$53,703,516 | \$406,101 | -4.7% | \$22,952,228 | \$17,820,841 | \$5,131,387 | -3.0% | \$77,061,845 | \$71,524,357 | \$5,537,488 | -4.3% |
| 16 | 12/20/2008 | \$55,777,328 | \$57,592,769 | (\$1,815,441) | -4.6% | \$15,833,517 | \$17,436,233 | (\$1,602,716) | -3.4% | \$71,610,845 | \$75,029,002 | (\$3,418,157) | -4.3% |
| 17 | 12/27/2008 | \$57,597,885 | \$57,696,003 | (\$98,118) | -4.3% | \$15,851,771 | \$14,743,680 | \$1,108,091 | -2.9% | \$73,449,656 | \$72,439,683 | \$1,009,973 | -4.0% |
| 18 | 1/3/2009 | \$57,582,115 | \$57,935,952 | (\$353,837) | -4.1% | \$16,900,028 | \$15,704,450 | \$1,195,578 | -2.3% | \$74,482,143 | \$73,640,402 | \$841,741 | -3.7% |
| 19 | 1/10/2009 | \$54,250,945 | \$55,360,542 | (\$1,109,597) | -4.0% | \$16,203,220 | \$15,691,540 | \$511,680 | -2.0% | \$70,454,165 | \$71,052,082 | (\$597,917) | -3.5% |
| 20 | 1/17/2009 | \$51,625,339 | \$54,920,166 | (\$3,294,827) | -4.1% | \$15,701,605 | \$16,259,669 | (\$558,064) | -2.1% | \$67,326,944 | \$71,179,835 | (\$3,852,891) | -3.6% |
| 21 | 1/24/2009 | \$52,789,573 | \$54,439,890 | (\$1,650,317) | -4.1% | \$15,897,473 | \$16,691,724 | (\$794,251) | -2.2% | \$68,687,046 | \$71,131,614 | (\$2,444,568) | -3.6% |
| 22 | 1/31/2009 | | \$57,464,382 | | | | \$17,968,227 | | | | \$75,432,609 | | |
| 23 | 2/7/2009 | | \$60,715,019 | | | | \$20,097,338 | | | | \$80,812,357 | | |
| 24 | 2/14/2009 | | \$57,093,143 | | | | \$22,179,908 | | | | \$79,273,051 | | |
| 25 | 2/21/2009 | | \$57,627,047 | | | | \$27,230,539 | | | | \$84,857,586 | | |
| 26 | 2/28/2009 | | \$55,591,667 | | | | \$17,016,118 | | | | \$72,607,785 | | |
| 27 | 3/7/2009 | | \$56,837,481 | | | | \$16,690,193 | | | | \$73,527,674 | | |
| 28 | 3/14/2009 | | \$54,587,112 | | | | \$16,448,165 | | | | \$71,035,277 | | |
| 29 | 3/21/2009 | | \$53,098,937 | | | | \$16,639,184 | | | | \$69,738,121 | | |
| 30 | 3/28/2009 | | \$53,933,689 | | | | \$17,698,625 | | | | \$71,632,314 | | |
| 31 | 4/4/2009 | | \$57,598,982 | | | | \$17,665,411 | | | | \$75,264,393 | | |
| 32 | 4/11/2009 | | \$53,954,185 | | | | \$15,860,784 | | | | \$69,814,969 | | |
| 33 | 4/18/2009 | | \$53,946,736 | | | | \$16,452,676 | | | | \$70,399,412 | | |
| 34 | 4/25/2009 | | \$51,533,006 | | | | \$16,873,949 | | | | \$68,406,955 | | |
| 35 | 5/2/2009 | | \$53,250,568 | | | | \$18,202,103 | | | | \$71,452,671 | | |
| 36 | 5/9/2009 | | \$54,060,849 | | | | \$18,422,562 | | | | \$72,483,411 | | |
| 37 | 5/16/2009 | | \$54,010,641 | | | | \$20,728,360 | | | | \$74,739,001 | | |
| 38 | 5/23/2009 | | \$50,377,032 | | | | \$15,461,384 | | | | \$65,838,416 | | |
| 39 | 5/30/2009 | | \$49,545,080 | | | | \$15,175,370 | | | | \$64,720,450 | | |
| 40 | 6/6/2009 | | \$53,702,986 | | | | \$15,982,166 | | | | \$69,685,152 | | |

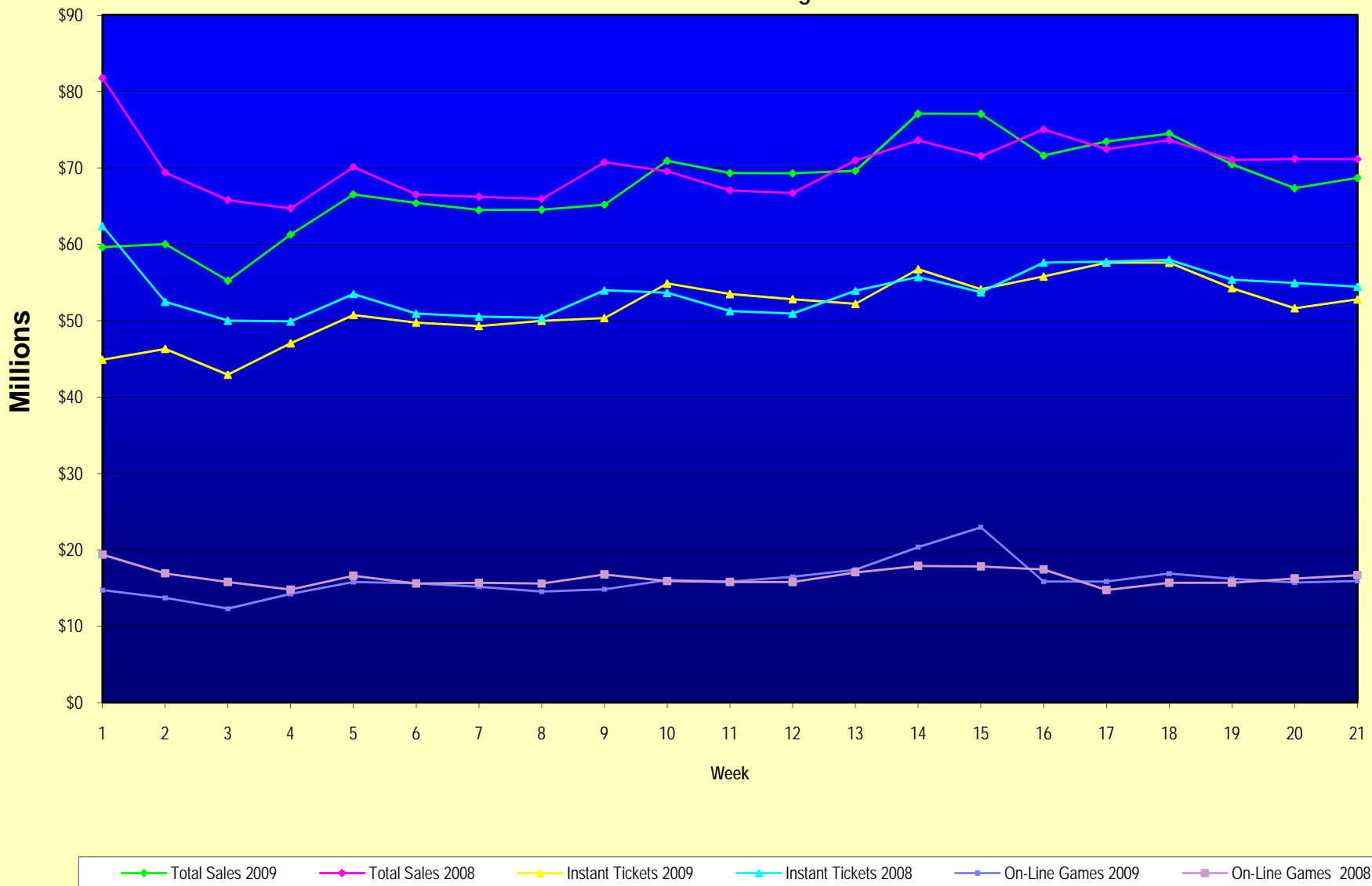
Note: Week 1 is not a full week of sales as this report is prepared on a Fiscal Year basis.

Texas Lottery Commission
Fiscal Year Over Year Change in Sales
Unaudited
FY 2009 Compared to FY 2008

| Week | FY 2009 Week Ending | INSTANT TICKETS | | | | ON-LINE GAMES | | | | TOTAL SALES | | | |
|-------------------------|---------------------------|-----------------|-----------------|----------------|-----------------------------------|---------------|---------------|---------------|-----------------------------------|-----------------|-----------------|----------------|-----------------------------------|
| | | FY 2009 | FY 2008 | Difference | % change - Cumulative Sales | FY 2009 | FY 2008 | Difference | % change - Cumulative Sales | FY 2009 | FY 2008 | Difference | % change - Cumulative Sales |
| 41 | 6/13/2009 | | \$51,171,483 | | | | \$16,589,087 | | | | \$67,760,570 | | |
| 42 | 6/20/2009 | | \$50,650,362 | | | | \$15,728,484 | | | | \$66,378,846 | | |
| 43 | 6/27/2009 | | \$49,258,266 | | | | \$15,250,905 | | | | \$64,509,171 | | |
| 44 | 7/4/2009 | | \$53,393,355 | | | | \$16,270,619 | | | | \$69,663,974 | | |
| 45 | 7/11/2009 | | \$53,127,756 | | | | \$16,914,922 | | | | \$70,042,678 | | |
| 46 | 7/18/2009 | | \$51,593,146 | | | | \$17,752,738 | | | | \$69,345,884 | | |
| 47 | 7/25/2009 | | \$49,902,181 | | | | \$16,706,145 | | | | \$66,608,326 | | |
| 48 | 8/1/2009 | | \$49,605,420 | | | | \$16,254,383 | | | | \$65,859,803 | | |
| 49 | 8/8/2009 | | \$50,961,907 | | | | \$16,770,496 | | | | \$67,732,403 | | |
| 50 | 8/15/2009 | | \$49,452,511 | | | | \$16,749,487 | | | | \$66,201,998 | | |
| 51 | 8/22/2009 | | \$49,249,518 | | | | \$17,286,302 | | | | \$66,535,820 | | |
| 52 | 8/29/2009 | | \$49,468,928 | | | | \$18,109,997 | | | | \$67,578,925 | | |
| 53 | 9/5/2009 | | \$6,054,239 | | | | \$493,109 | | | | \$6,547,348 | | |
| Total thru Current Week | | \$1,085,115,558 | \$1,131,018,481 | (\$45,902,923) | -4.1% | \$336,328,910 | \$343,972,130 | (\$7,643,220) | -2.2% | \$1,421,444,468 | \$1,474,990,611 | (\$53,546,143) | -3.6% |
| Fiscal Year Total | | \$1,085,115,558 | \$2,783,836,095 | | | \$336,328,910 | \$887,641,858 | | | \$1,421,444,468 | \$3,671,477,953 | | |

** FY 2009 includes 6 days; FY 2008 includes 8 days
FY 2009 average daily sales are \$9,242,258. Two days at average daily sales are \$18,484,516.

Texas Lottery Commission Fiscal Year Over Year Change in Sales



Note: Week 1 is not a full week of sales as this report is prepared on a Fiscal Year basis.

Texas Lottery Commission
Instant Tickets by Price Point
Sales, Prize Expense, Sales Contribution and Payout Percentage With Year Over Year Changes
Unaudited

| Fiscal Year | Price Point | # of Active Games | FY Sales | % of Instant Ticket Sales | Year over Year Change in Sales | FY Prize Expense | Year over Year Change in Prize Expense | FY Sales Contribution | Year over Year Change in Contribution | Average Prize Payout % | Year over Year Change in Payout % |
|--------------|-------------|-------------------|------------------------|---------------------------|--------------------------------|----------------------|--|-----------------------|---------------------------------------|------------------------|-----------------------------------|
| 2008 | \$1.00 | 38 | 97,333,588 | 8.6% | | 58,475,169 | | 38,858,419 | | 60.1% | 0.0% |
| thru | \$2.00 | 44 | 187,468,808 | 16.6% | | 121,875,693 | | 65,593,115 | | 65.0% | 0.2% |
| 1/26/2008 | \$3.00 | 12 | 90,320,742 | 8.0% | | 59,411,351 | | 30,909,391 | | 65.8% | -0.1% |
| | \$5.00 | 37 | 308,861,755 | 27.3% | | 208,966,869 | | 99,894,886 | | 67.7% | -0.5% |
| | \$7.00 | 11 | 76,824,412 | 6.8% | | 52,240,330 | | 24,584,082 | | 68.0% | 0.1% |
| | \$10.00 | 17 | 174,732,066 | 15.4% | | 121,433,671 | | 53,298,395 | | 69.5% | -1.4% |
| | \$20.00 | 6 | 66,449,020 | 5.9% | | 47,775,245 | | 18,673,775 | | 71.9% | -0.1% |
| | \$25.00 | 2 | 39,441,100 | 3.5% | | 28,636,194 | | 10,804,906 | | 72.6% | 0.3% |
| | \$30.00 | 3 | 19,744,140 | 1.7% | | 14,285,062 | | 5,459,078 | | 72.4% | 0.1% |
| | \$50.00 | 2 | 69,842,850 | 6.2% | | 50,386,182 | | 19,456,668 | | 72.1% | 0.0% |
| Total | | 172 | \$1,131,018,481 | | | \$763,485,766 | | \$367,532,715 | | 67.5% | |
| 2009 | \$1.00 | 36 | 96,545,934 | 8.9% | | 58,114,591 | | 38,431,343 | | 60.2% | 0.2% |
| thru | \$2.00 | 32 | 186,572,473 | 17.2% | | 120,985,470 | | 65,587,003 | | 64.8% | -0.7% |
| 1/24/2009 | \$3.00 | 14 | 116,925,210 | 10.8% | | 76,863,468 | | 40,061,742 | | 65.7% | 0.0% |
| | \$5.00 | 35 | 334,127,624 | 30.8% | | 227,249,339 | | 106,878,285 | | 68.0% | 0.1% |
| | \$7.00 | 6 | 47,395,292 | 4.4% | | 32,234,998 | | 15,160,294 | | 68.0% | 0.0% |
| | \$10.00 | 14 | 146,163,320 | 13.5% | | 102,294,274 | | 43,869,046 | | 70.0% | 0.0% |
| | \$20.00 | 7 | 101,597,020 | 9.4% | | 72,917,876 | | 28,679,144 | | 71.8% | 0.0% |
| | \$25.00 | 1 | 2,374,175 | 0.2% | | 1,726,852 | | 647,323 | | 72.7% | 0.2% |
| | \$30.00 | 3 | 9,430,110 | 0.9% | | 6,833,730 | | 2,596,380 | | 72.5% | 0.1% |
| | \$50.00 | 3 | 43,984,400 | 4.1% | | 31,797,439 | | 12,186,961 | | 72.3% | 0.2% |
| Total | | 151 | \$1,085,115,558 | | | \$731,018,037 | | \$354,097,521 | | 67.4% | |
| Variance | \$1.00 | -2 | -787,654 | | -0.8% | -360,578 | -0.6% | -427,076 | -1.1% | 0.12% | |
| 2009 to | \$2.00 | -12 | -896,335 | | -0.5% | -890,224 | -0.7% | -6,111 | 0.0% | -0.16% | |
| 2008 | \$3.00 | 2 | 26,604,468 | | 29.5% | 17,452,117 | 29.4% | 9,152,351 | 29.6% | -0.04% | |
| | \$5.00 | -2 | 25,265,869 | | 8.2% | 18,282,471 | 8.7% | 6,983,398 | 7.0% | 0.36% | |
| | \$7.00 | -5 | -29,429,120 | | -38.3% | -20,005,331 | -38.3% | -9,423,789 | -38.3% | 0.01% | |
| | \$10.00 | -3 | -28,568,746 | | -16.4% | -19,139,396 | -15.8% | -9,429,350 | -17.7% | 0.49% | |
| | \$20.00 | 1 | 35,148,000 | | 52.9% | 25,142,631 | 52.6% | 10,005,369 | 53.6% | -0.13% | |
| | \$25.00 | -1 | -37,066,925 | | -94.0% | -26,909,342 | -94.0% | -10,157,583 | -94.0% | 0.13% | |
| | \$30.00 | 0 | -10,314,030 | | -52.2% | -7,451,332 | -52.2% | -2,862,698 | -52.4% | 0.12% | |
| | \$50.00 | 1 | -25,858,450 | | -37.0% | -18,588,743 | -36.9% | -7,269,707 | -37.4% | 0.15% | |
| Total | | -21 | -\$45,902,923 | | -4.1% | -\$32,467,728 | -4.3% | -\$13,435,195 | -3.7% | -0.14% | |

Texas Lottery Commission
Instant Tickets by Price Point
Sales, Prize Expense, Sales Contribution and Payout Percentage With Year Over Year Changes
Unaudited

Notes - Instant Ticket Variances

| | | FY 2009 | | FY 2008 | | Difference |
|--------------|-------------|-----------------|--|-----------------|--|---------------|
| Sales | \$1 - \$7 | \$781,566,533 | | \$760,809,305 | | \$20,757,228 |
| Prize Exp. | \$1 - \$7 | \$515,447,866 | | \$500,969,412 | | \$14,478,454 |
| Sales Cont. | \$1 - \$7 | \$266,118,667 | | \$259,839,893 | | \$6,278,774 |
| Prize Exp. % | \$1 - \$7 | 66.0% | | 65.8% | | 0.1% |
| | | FY 2009 | | FY 2008 | | Difference |
| Sales | \$10 - \$50 | \$303,549,025 | | \$370,209,176 | | -\$66,660,151 |
| Prize Exp. | \$10 - \$50 | \$215,570,172 | | \$262,516,354 | | -\$46,946,182 |
| Sales Cont. | \$10 - \$50 | \$87,978,853 | | \$107,692,822 | | -\$19,713,969 |
| Prize Exp. % | \$10 - \$50 | 71.0% | | 70.9% | | 0.1% |
| | | FY 2009 | | FY 2008 | | Difference |
| Sales | Instant | \$1,085,115,558 | | \$1,131,018,481 | | -\$45,902,923 |
| Prize Exp. | Instant | \$731,018,037 | | \$763,485,766 | | -\$32,467,728 |
| Sales Cont. | Instant | \$354,097,521 | | \$367,532,715 | | -\$13,435,195 |
| Prize Exp. % | Instant | 67.4% | | 67.5% | | -0.1% |

| | | FY 2009 | | FY 2008 | | Difference |
|--------------|-------------|-----------------|--|-----------------|--|---------------|
| Sales | \$1 - \$10 | \$927,729,853 | | \$935,541,371 | | -\$7,811,518 |
| Prize Exp. | \$1 - \$10 | \$617,742,140 | | \$622,403,083 | | -\$4,660,943 |
| Sales Cont. | \$1 - \$10 | \$309,987,713 | | \$313,138,288 | | -\$3,150,575 |
| Prize Exp. % | \$1 - \$10 | 66.6% | | 66.5% | | 0.1% |
| | | FY 2009 | | FY 2008 | | Difference |
| Sales | \$20 - \$50 | \$157,385,705 | | \$195,477,110 | | -\$38,091,405 |
| Prize Exp. | \$20 - \$50 | \$113,275,897 | | \$141,082,683 | | -\$27,806,786 |
| Sales Cont. | \$20 - \$50 | \$44,109,808 | | \$54,394,427 | | -\$10,284,619 |
| Prize Exp. % | \$20 - \$50 | 72.0% | | 72.2% | | -0.2% |
| | | FY 2009 | | FY 2008 | | Difference |
| Sales | Instant | \$1,085,115,558 | | \$1,131,018,481 | | -\$45,902,923 |
| Prize Exp. | Instant | \$731,018,037 | | \$763,485,766 | | -\$32,467,728 |
| Sales Cont. | Instant | \$354,097,521 | | \$367,532,715 | | -\$13,435,195 |
| Prize Exp. % | Instant | 67.4% | | 67.5% | | -0.1% |

Texas Lottery Commission
Weekly Sales Summary
& Comparison to Previous Week
 Unaudited

| | Week Ending 01/24/2009 | | Week Ending 01/17/2009 | | | |
|--------------------|---------------------------|---------------|---------------------------|---------------|--------------------|-----------------|
| | <u>THIS WEEK</u> | % of Sales | <u>LAST WEEK</u> | % of Sales | <u>\$ change</u> | <u>% change</u> |
| Total Sales | <u>\$68,687,046</u> | | <u>\$67,326,944</u> | | <u>\$1,360,102</u> | 2.02% |
| Instant Tickets | <u>\$52,789,573</u> | 76.9% | <u>\$51,625,339</u> | 76.7% | <u>\$1,164,234</u> | 2.26% |
| Lotto Texas | \$3,723,836 | 5.4% | \$3,668,303 | 5.4% | \$55,533 | 1.51% |
| Pick 3 | \$5,514,548 | 8.0% | \$5,443,159 | 8.1% | \$71,389 | 1.31% |
| Pick 3 Sum It Up | \$115,828 | 0.2% | \$112,605 | 0.2% | \$3,223 | 2.86% |
| Cash 5 | \$1,376,695 | 2.0% | \$1,387,958 | 2.1% | -\$11,263 | -0.81% |
| Texas Two Step | \$860,483 | 1.3% | \$778,563 | 1.2% | \$81,920 | 10.52% |
| Mega Millions | \$2,692,611 | 3.9% | \$2,683,707 | 4.0% | \$8,904 | 0.33% |
| Megaplier | \$676,936 | 1.0% | \$675,416 | 1.0% | \$1,520 | 0.23% |
| Daily 4 | \$836,996 | 1.2% | \$852,987 | 1.3% | -\$15,991 | -1.87% |
| Daily 4 Sum It Up | \$99,541 | 0.1% | \$98,908 | 0.1% | \$634 | 0.64% |
| Total Online Sales | <u>\$15,897,473</u> | | <u>\$15,701,605</u> | | <u>\$195,868</u> | 1.25% |

* Totals may not sum due to rounding.

Texas Lottery Commission
Weekly Sales Summary
Unaudited

INSTANT TICKETS
TOP TEN SELLING GAMES

For the Week Ending : 01/24/2009

| Rank | Price Point | Game | Sales (Millions) |
|------|-------------|-------------------------------|------------------|
| 1 | \$ 5 | HOT HAND | \$ 3.213 |
| 2 | \$ 5 | WELCOME TO FABULOUS LAS VEGAS | \$ 2.746 |
| 3 | \$ 10 | MEGA JUMBO BUCKS II | \$ 2.474 |
| 4 | \$ 3 | BONUS CASHWORD | \$ 2.300 |
| 5 | \$ 5 | GIANT JUMBO BUCKS II | \$ 2.217 |
| 6 | \$ 20 | TEXAS \$50 MILLION CLUB | \$ 2.036 |
| 7 | \$ 10 | SET FOR LIFE | \$ 1.966 |
| 8 | \$ 7 | SIZZLIN' RED 7'S | \$ 1.945 |
| 9 | \$ 5 | FANTASTIC 5'S | \$ 1.888 |
| 10 | \$ 50 | \$130,000,000 PLATINUM PAYOUT | \$ 1.740 |

Texas Lottery Commission
Prize Payout Tracking Report
Unaudited

Through Week Ending 01/24/2009

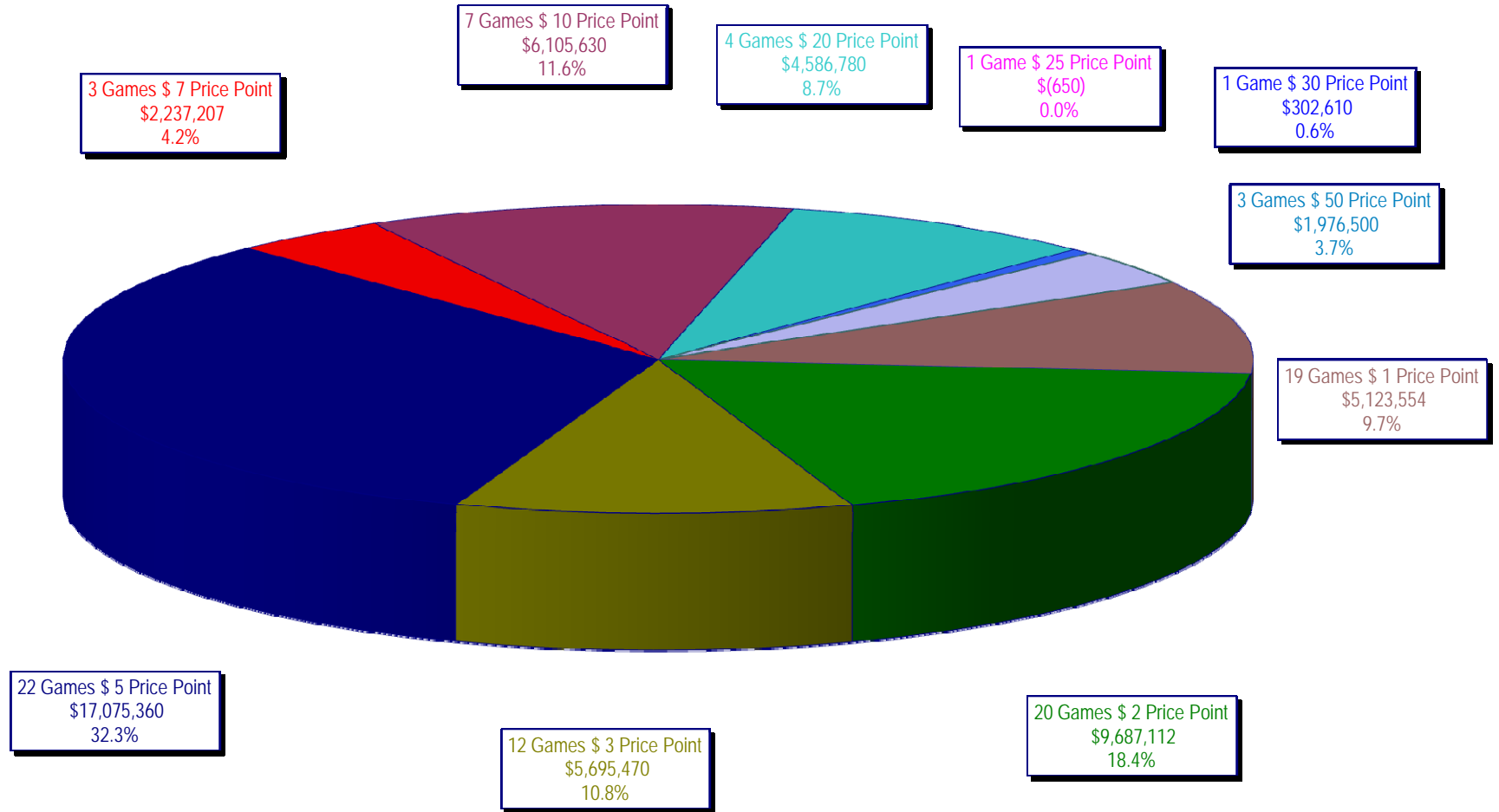
On-Line Sales

| | | FY Sales Through Week Ending 1/24/2009 | | FY Prize Expense Through Week Ending 1/24/2009 | Actual* Prize Payout | Base Payout (Prize Pool) |
|-------------------|----|---|----|---|-------------------------|-----------------------------|
| Lotto | \$ | 73,045,310 | \$ | 36,621,600 | 50.14% | 50.00% |
| Pick 3 | | 111,684,324 | | 54,285,160 | 48.61% | 50.00% |
| Pick 3 Sum It Up | | 2,360,959 | | 1,073,801 | 45.48% | 50.00% |
| Cash 5 | | 28,392,931 | | 14,297,121 | 50.35% | 50.00% |
| Texas Two-Step | | 18,216,312 | | 10,109,463 | 55.50% | 50.00% |
| Mega Millions | | 67,430,933 | | 32,825,310 | 48.68% | 50.00%** |
| Megaplier | | 16,064,675 | | 7,358,789 | 45.81% | N/A |
| Daily 4 | | 16,977,656 | | 7,576,625 | 44.63% | 50.00% |
| Daily 4-Sum It Up | | 2,155,811 | | 921,950 | 42.77% | 50.00% |
| Totals | \$ | 336,328,910 | \$ | 165,069,818 | 49.08% | |

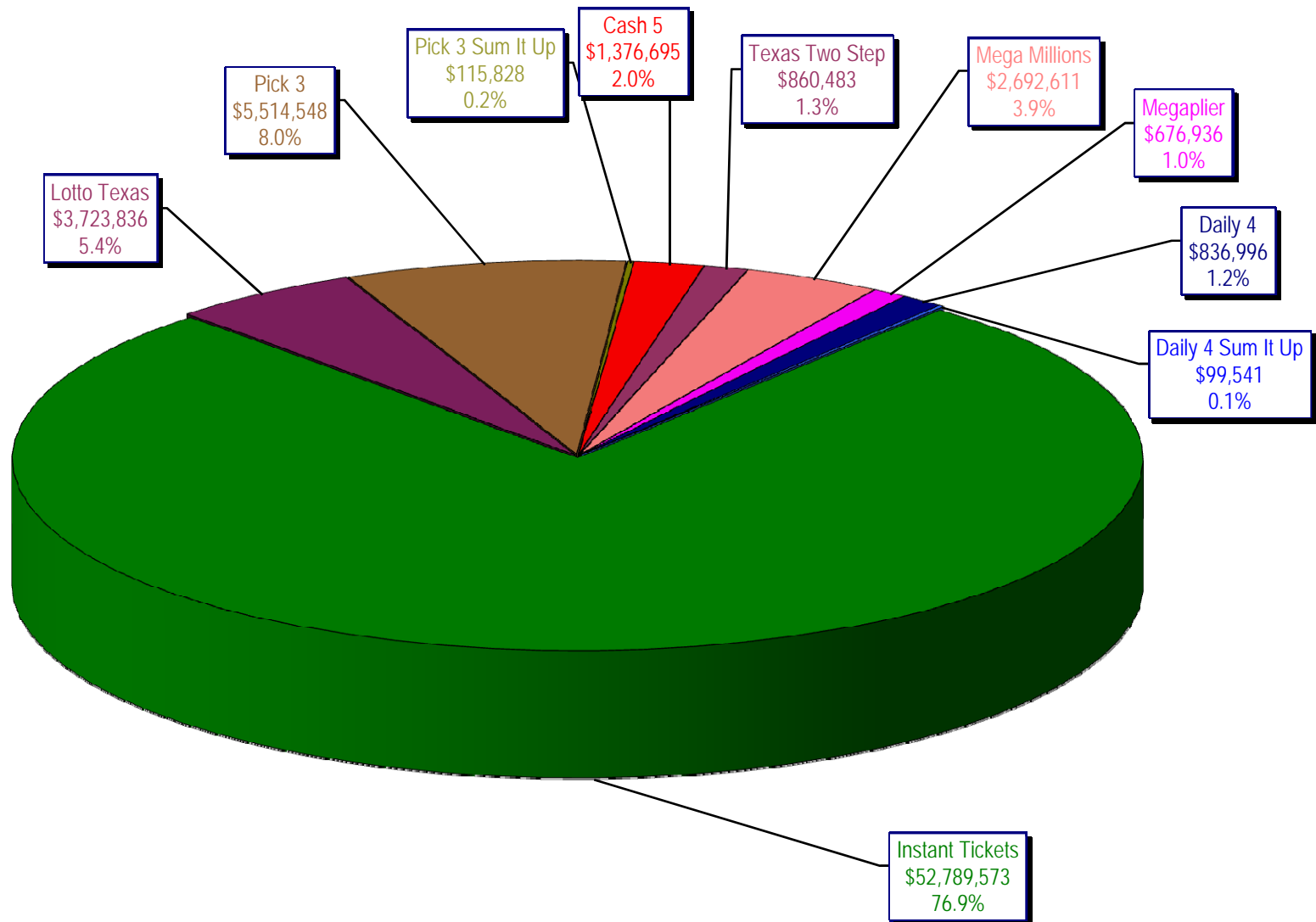
* Before Unclaimed Prizes

** Estimated; depends on # of guaranteed prizes won in Texas

Texas Lottery Commission
Instant Ticket Sales
For the Week Ending 01/24/2009
(Unaudited)



Texas Lottery Commission
All Game Sales
For the Week Ending 01/24/2009
(Unaudited)



Texas Lottery Commission - Weekly Sales Summary for FY 2009 (Unaudited)

| Week Ended | Instant Games | New Games & Dates | Lotto Texas | Jackpot | | Pick 3 | Pick 3 Sum It Up | Cash 5 | Texas Two Step | Jackpot | | Mega Millions | Jackpot | | Megaplier | Daily 4 | Daily 4 Sum It Up | Total | Per Cap. |
|--------------------------|-------------------|---|-------------------|---------|----|------------------|------------------|------------------|----------------|---------|------|----------------|--------------|--------------|----------------|---------------|-------------------|-------------------|-------------------|
| | | | | W | S | | | | | M/T | TH/F | | T | F | | | | | |
| 9/6/2008 | 50,944,343.00 | 1108 (\$2,N), 1088 (\$3, N) - 9/01/08 | 3,378,718.00 | 5 | 6 | 5,436,414.00 | 122,123.00 | 1,396,622.00 | 890,346.00 | 350 | 450 | 2,445,490.00 | 12 | 16 | 649,090.00 | 786,482.50 | 109,834.00 | 66,159,462.50 | 2.77 |
| 9/13/2008 | 46,309,551.00 | 1109 (\$1,N), 1098 (\$5, N) - 9/08/08 | 3,020,089.00 | 7 | 8 | 4,705,585.50 | 105,899.00 | 1,279,412.00 | 856,199.00 | 600 | 200 | 2,327,214.00 | 24 | 12 | 617,672.00 | 696,633.00 | 96,156.50 | 60,014,411.00 | 2.51 |
| 9/20/2008 | 42,923,171.00 | 0 | 3,054,093.00 | 9 | 10 | 4,121,734.50 | 90,718.00 | 1,155,350.00 | 637,792.00 | 225 | 250 | 1,978,127.00 | 15 | 12 | 540,225.00 | 627,210.00 | 86,013.50 | 55,214,434.00 | 2.31 |
| 9/27/2008 | 47,042,801.00 | 1111 (\$2,N), 1099 (\$5, N) - 9/22/08 | 3,427,671.00 | 11 | 12 | 4,821,563.00 | 103,189.50 | 1,288,062.00 | 834,307.00 | 275 | 425 | 2,322,862.00 | 16 | 24 | 617,085.00 | 709,741.50 | 97,858.00 | 61,265,140.00 | 2.56 |
| 10/4/2008 | 50,747,162.00 | 1113 (\$1,N) 9/29/08 | 3,675,683.00 | 13 | 14 | 5,305,711.00 | 116,332.50 | 1,369,040.00 | 1,074,874.00 | 525 | 650 | 2,671,927.00 | 32 | 42 | 693,845.00 | 770,782.50 | 106,277.00 | 66,531,634.00 | 2.78 |
| 10/11/2008 | 49,763,789.00 | 0 | 3,732,365.00 | 15 | 16 | 5,287,094.00 | 114,665.50 | 1,370,334.00 | 1,305,250.00 | 800 | 975 | 2,306,070.00 | 12 | 16 | 622,120.00 | 778,204.00 | 106,395.00 | 65,386,286.50 | 2.74 |
| 10/18/2008 | 49,299,053.00 | 1117 (\$3,N), 1118 (\$20,N) - 10/13/08 | 3,780,438.00 | 17 | 18 | 5,149,258.00 | 109,530.00 | 1,355,601.00 | 741,849.00 | 200 | 200 | 2,500,644.00 | 23 | 32 | 652,198.00 | 776,366.00 | 102,056.00 | 64,466,993.00 | 2.70 |
| 10/25/2008 | 49,977,581.00 | 1119 (\$1,N), 1120 (\$5,N) - 10/20/08 | 3,210,762.00 | 4 | 5 | 5,099,671.00 | 107,104.50 | 1,339,079.00 | 789,649.00 | 225 | 275 | 2,456,965.00 | 42 | 12 | 641,206.00 | 778,434.00 | 102,972.50 | 64,503,424.00 | 2.70 |
| 11/1/2008 | 50,346,542.00 | 1121 (\$2,N), 1122 (\$10,N) - 10/27/08 | 3,325,641.00 | 6 | 7 | 5,234,124.00 | 109,983.00 | 1,339,046.00 | 946,035.00 | 375 | 475 | 2,347,596.00 | 16 | 23 | 626,235.00 | 805,572.00 | 104,612.50 | 65,185,386.50 | 2.73 |
| 11/8/2008 | 54,860,087.00 | 1123 (\$3,N), 1124 (\$7,N) - 11/03/08; 1103 (\$3,N) - 11/05/08; 1063 (\$3,N) - 11/07/08 | 3,290,417.00 | 4 | 5 | 5,686,701.00 | 118,495.00 | 1,397,985.00 | 1,158,101.00 | 625 | 750 | 2,729,302.50 | 31 | 42 | 692,662.00 | 871,230.00 | 112,175.50 | 70,917,156.00 | 2.97 |
| 11/15/2008 | 53,484,812.00 | 1125 (\$1, N), 1126 (\$5,N) - 11/10/08 | 3,336,934.00 | 6 | 7 | 5,459,984.00 | 112,884.00 | 1,366,024.00 | 766,955.00 | 200 | 225 | 3,102,251.00 | 51 | 62 | 749,736.00 | 830,957.00 | 104,094.00 | 69,314,631.00 | 2.90 |
| 11/22/2008 | 52,806,511.00 | 0 | 3,452,481.00 | 8 | 9 | 5,329,591.00 | 108,861.50 | 1,358,271.00 | 743,950.00 | 200 | 200 | 3,666,517.00 | 73 | 86 | 847,201.00 | 849,077.50 | 104,797.50 | 69,267,258.50 | 2.90 |
| 11/29/2008 | 52,199,741.00 | 1127 (\$2,N), 1128 (\$5,N) - 11/24/08 | 3,585,374.00 | 10 | 11 | 5,340,783.50 | 111,443.00 | 1,315,233.00 | 686,077.00 | 200 | 225 | 4,441,715.00 | 96 | 111 | 968,906.00 | 845,475.50 | 102,569.00 | 69,597,317.00 | 2.91 |
| 12/6/2008 | 56,731,851.00 | 0 | 3,794,991.00 | 12 | 13 | 5,752,593.00 | 121,663.50 | 1,416,446.00 | 780,328.00 | 250 | 200 | 6,238,355.00 | 128 | 146 | 1,270,214.00 | 881,841.50 | 107,357.00 | 77,095,640.00 | 3.23 |
| 12/13/2008 | 54,109,617.00 | 1129 (\$1, N) - 12/08/08 | 3,315,658.00 | 4 | 5 | 5,580,770.00 | 114,295.50 | 1,384,858.00 | 766,893.00 | 225 | 250 | 9,150,536.00 | 170 | 207 | 1,691,121.00 | 846,176.50 | 101,919.50 | 77,061,844.50 | 3.22 |
| 12/20/2008 | 55,777,328.00 | 1104 (\$2,N), 1105 (\$5,N), 1106 (\$10,N) - 12/15/08 | 3,432,340.00 | 6 | 7 | 5,741,120.00 | 116,075.50 | 1,401,805.00 | 741,945.00 | 200 | 200 | 2,736,234.00 | 12 | 16 | 687,875.00 | 871,579.50 | 104,543.00 | 71,610,845.00 | 3.00 |
| 12/27/2008 | 57,597,885.00 | 1077 (\$1,N), 1110 (\$1,N) - 12/22/08 | 3,582,169.00 | 8 | 4 | 5,628,081.50 | 115,323.00 | 1,340,590.00 | 708,906.00 | 225 | 250 | 2,842,167.00 | 22 | 29 | 706,042.00 | 828,346.00 | 100,146.00 | 73,449,655.50 | 3.07 |
| 1/3/2009 | 57,582,115.00 | 0 | 3,784,763.00 | 5 | 6 | 5,690,220.50 | 120,519.50 | 1,406,807.00 | 934,000.00 | 325 | 525 | 3,190,457.00 | 37 | 46 | 780,850.00 | 885,674.00 | 106,736.50 | 74,482,142.50 | 3.12 |
| 1/10/2009 | 54,250,945.00 | 1135 (\$2,N), 1136 (\$5,N) - 1/5/09 | 3,582,400.00 | 7 | 8 | 5,476,890.00 | 116,674.50 | 1,403,531.00 | 1,267,847.00 | 675 | 900 | 2,701,275.00 | 12 | 16 | 681,574.00 | 868,919.00 | 104,109.50 | 70,454,165.00 | 2.95 |
| 1/17/2009 | 51,625,339.00 | 1137 (\$1,N), 1138 (\$3,N) - 1/12/09 | 3,668,302.50 | 9 | 10 | 5,443,159.00 | 112,605.00 | 1,387,958.00 | 778,563.00 | 200 | 200 | 2,683,707.00 | 22 | 12 | 675,416.00 | 852,987.00 | 98,907.50 | 67,326,944.00 | 2.82 |
| 1/24/2009 | 52,789,573.00 | 1115 (\$2,N), 1116 (\$5,N) - 1/19/09 | 3,723,835.50 | 11 | 12 | 5,514,547.50 | 115,827.50 | 1,376,695.00 | 860,483.00 | 225 | 325 | 2,692,611.00 | 16 | 21 | 676,936.00 | 836,996.00 | 99,541.00 | 68,687,045.50 | 2.87 |
| weekly change | 2.26% | | 1.51% | | | 1.31% | 2.86% | -0.81% | 10.52% | | | 0.33% | | | 0.23% | -1.87% | 0.64% | 2.02% | |
| SALES | | | SALES | | | SALES | SALES | SALES | SALES | | | SALES | SALES | SALES | SALES | SALES | SALES | SALES | % of Sales |
| Startup to date | 34,565,701,560.00 | | 10,352,142,357.00 | | | 3,410,403,276.50 | 8,846,788.50 | 2,147,548,941.00 | 444,482,030.00 | | | 993,569,527.50 | | | 234,272,709.00 | 59,194,627.50 | 10,494,614.50 | 52,434,790,403.50 | 100.0% |
| Calendar Year to date | 183,797,885.00 | | 12,773,065.00 | | | 19,243,777.50 | 175,670.50 | 4,810,487.00 | 3,322,893.00 | | | 9,612,624.00 | | | 2,404,894.00 | 2,986,969.00 | 353,807.00 | 239,482,072.00 | 100.0% |
| Fiscal Year to date 2009 | 1,085,115,558.00 | | 73,045,310.00 | | | 111,684,324.00 | 2,360,958.50 | 28,392,931.00 | 18,216,312.00 | | | 67,430,932.50 | | | 16,064,675.00 | 16,977,656.00 | 2,155,811.00 | 1,421,444,468.00 | 100.0% |