



WEEKLY SALES SUMMARY

Unaudited

Week Ending: 1/24/2015

Texas Lottery Commission
Fiscal Year to Date Sales Comparison
Unaudited

Through the Week Ending 1/24/2015 (21 Weeks)

Sales by Game	FY 2013 *	FY 2014 **	FY 2015	\$ Change		% Change	
				FY 2015 to FY 2013	FY 2015 to FY 2014	FY 2015 to FY 2013	FY 2015 to FY 2014
Instants	\$ 1,237,279,186	\$ 1,286,579,469	\$ 1,334,297,496	\$ 97,018,310	\$ 47,718,027	7.8%	3.7%
Lotto Texas	63,861,244	53,529,243	48,596,027	-15,265,217	-4,933,216	-23.9%	-9.2%
Lotto Extra	-	6,940,985	7,371,936	7,371,936	430,951	-	6.2%
Pick 3	107,630,516	101,184,159	99,715,222	-7,915,294	-1,468,938	-7.4%	-1.5%
Pick 3 Sum It Up	2,021,037	2,019,569	1,914,183	-106,855	-105,386	-5.3%	-5.2%
Cash Five	23,018,035	21,331,613	19,938,903	-3,079,132	-1,392,710	-13.4%	-6.5%
Texas Two Step	23,828,859	22,351,943	21,311,169	-2,517,690	-1,040,774	-10.6%	-4.7%
Mega Millions	43,367,982	96,039,938	68,824,039	25,456,057	-27,215,899	58.7%	-28.3%
Megaplier	10,062,573	19,772,752	15,492,622	5,430,049	-4,280,130	54.0%	-21.6%
Daily 4	28,481,977	33,460,060	33,825,630	5,343,653	365,571	18.8%	1.1%
Daily 4 Sum It Up	1,881,329	2,067,320	2,014,932	133,603	-52,388	7.1%	-2.5%
Powerball	115,540,583	85,387,397	71,942,282	-43,598,301	-13,445,115	-37.7%	-15.7%
Power Play	11,612,943	10,183,492	9,379,466	-2,233,477	-804,026	-19.2%	-7.9%
All or Nothing	36,984,116	19,183,071	15,444,862	-21,539,254	-3,738,209	-58.2%	-19.5%
Monopoly	-	-	2,656,530	2,656,530	2,656,530	-	-
Total	\$ 1,705,570,380	\$ 1,760,031,010	\$ 1,752,725,298	\$ 47,154,919	\$ -7,305,712	2.8%	-0.4%

* 2 extra days

** 1 extra day

¹ Monopoly sales were suspended after draw on 12/12/14

Texas Lottery Commission
Fiscal Year to Date Cumulative Average Sales Comparison
Unaudited

Through the Week Ending 1/24/2015 (21 Weeks)

Sales by Game	FY 2013	FY 2014	FY 2015
Instant	\$ 8,359,995	\$ 8,752,241	\$ 9,139,024
Lotto Texas	431,495	364,145	332,850
Lotto Extra	-	47,218	50,493
Pick 3	727,233	688,328	682,981
Pick 3 Sum It Up	13,656	13,739	13,111
Cash Five	155,527	145,113	136,568
Texas Two Step	161,006	152,054	145,967
Mega Millions	293,027	653,333	471,398
Megaplier	67,990	134,509	106,114
Daily 4	192,446	227,619	231,682
Daily 4 Sum It Up	12,712	14,063	13,801
Powerball	780,680	580,867	492,755
Power Play	78,466	69,275	64,243
All or Nothing	* 264,172	130,497	105,787
Monopoly	-	- **	48,301
Total	\$ 11,538,404	\$ 11,973,000	\$ 12,035,073

	thru 1/26/2013	thru 1/25/2014	thru 1/24/2015
	148 days	147 days	146 days
*	140 days		** 55 days

Texas Lottery Commission
Fiscal Year Over Year Change in Sales
Unaudited
FY 2015 Compared to FY 2014

			INSTANT TICKETS				DRAW GAMES				TOTAL SALES			
FY 2015			FY 2015	FY 2014	Difference	% change - Cumulative Sales	FY 2015	FY 2014	Difference	% change - Cumulative Sales	FY 2015	FY 2014	Difference	% change - Cumulative Sales
Week	Week Ending													
1	9/6/2014 *		\$54,911,801	\$58,587,757	(\$3,675,956)	-6.3%	\$17,482,488	\$22,369,499	(\$4,887,011)	-21.8%	\$72,394,289	\$80,957,256	(\$8,562,967)	-10.6%
2	9/13/2014		\$61,436,533	\$57,135,931	\$4,300,602	7.5%	\$19,097,081	\$25,412,980	(\$6,315,899)	-24.9%	\$80,533,614	\$82,548,911	(\$2,015,297)	-2.4%
3	9/20/2014		\$60,959,234	\$59,018,194	\$1,941,040	3.3%	\$20,567,894	\$29,161,241	(\$8,593,347)	-29.5%	\$81,527,128	\$88,179,435	(\$6,652,307)	-7.5%
4	9/27/2014		\$59,710,056	\$57,927,984	\$1,782,072	3.1%	\$19,920,828	\$20,012,313	(\$91,485)	-0.5%	\$79,630,884	\$77,940,297	\$1,690,588	2.2%
5	10/4/2014		\$62,119,854	\$62,146,816	(\$26,962)	0.0%	\$18,531,421	\$20,043,557	(\$1,512,136)	-7.5%	\$80,651,275	\$82,190,373	(\$1,539,098)	-1.9%
6	10/11/2014		\$61,253,665	\$60,867,582	\$386,083	0.6%	\$18,985,332	\$19,480,962	(\$495,631)	-2.5%	\$80,238,997	\$80,348,544	(\$109,548)	-0.1%
7	10/18/2014		\$60,230,048	\$60,612,193	(\$382,145)	-0.6%	\$19,538,402	\$20,079,610	(\$541,209)	-2.7%	\$79,768,450	\$80,691,803	(\$923,354)	-1.1%
8	10/25/2014		\$62,384,112	\$59,548,277	\$2,835,835	4.8%	\$21,475,643	\$19,319,928	\$2,155,715	11.2%	\$83,859,755	\$78,868,205	\$4,991,550	6.3%
9	11/1/2014		\$63,404,713	\$61,710,236	\$1,694,477	2.7%	\$23,568,817	\$18,308,976	\$5,259,842	28.7%	\$86,973,530	\$80,019,212	\$6,954,319	8.7%
10	11/8/2014		\$65,486,719	\$61,668,594	\$3,818,125	6.2%	\$23,749,032	\$19,555,070	\$4,193,963	21.4%	\$89,235,751	\$81,223,664	\$8,012,088	9.9%
11	11/15/2014		\$61,745,521	\$60,057,025	\$1,688,496	2.8%	\$17,449,604	\$20,930,071	(\$3,480,468)	-16.6%	\$79,195,125	\$80,987,096	(\$1,791,972)	-2.2%
12	11/22/2014		\$66,353,583	\$63,118,266	\$3,235,317	5.1%	\$17,108,084	\$19,086,770	(\$1,978,687)	-10.4%	\$83,461,667	\$82,205,036	\$1,256,631	1.5%
13	11/29/2014		\$60,471,184	\$57,145,294	\$3,325,890	5.8%	\$17,303,129	\$20,434,618	(\$3,131,489)	-15.3%	\$77,774,313	\$77,579,912	\$194,401	0.3%
14	12/6/2014		\$66,648,696	\$59,883,783	\$6,764,913	11.3%	\$18,862,425	\$22,791,842	(\$3,929,417)	-17.2%	\$85,511,121	\$82,675,625	\$2,835,496	3.4%
15	12/13/2014		\$65,708,630	\$60,310,298	\$5,398,332	9.0%	\$18,649,598	\$35,859,153	(\$17,209,555)	-48.0%	\$84,358,228	\$96,169,451	(\$11,811,223)	-12.3%
16	12/20/2014		\$68,551,298	\$65,088,999	\$3,462,299	5.3%	\$19,051,100	\$46,832,745	(\$27,781,646)	-59.3%	\$87,602,398	\$111,921,744	(\$24,319,347)	-21.7%
17	12/27/2014		\$73,858,618	\$67,721,619	\$6,136,999	9.1%	\$20,006,357	\$18,218,091	\$1,788,266	9.8%	\$93,864,975	\$85,939,710	\$7,925,265	9.2%
18	1/3/2015		\$67,733,268	\$67,162,991	\$570,277	0.8%	\$21,355,167	\$19,140,745	\$2,214,422	11.6%	\$89,088,435	\$86,303,736	\$2,784,699	3.2%
19	1/10/2015		\$64,745,641	\$65,049,914	(\$304,273)	-0.5%	\$22,265,347	\$17,954,333	\$4,311,015	24.0%	\$87,010,988	\$83,004,247	\$4,006,742	4.8%
20	1/17/2015		\$64,015,166	\$62,731,830	\$1,283,336	2.0%	\$23,694,617	\$18,900,213	\$4,794,405	25.4%	\$87,709,783	\$81,632,043	\$6,077,741	7.4%
21	1/24/2015		\$62,569,156	\$59,085,886	\$3,483,270	5.9%	\$19,765,442	\$19,558,830	\$206,612	1.1%	\$82,334,598	\$78,644,716	\$3,689,882	4.7%
22	1/31/2015			\$64,099,096				\$20,764,006				\$84,863,102		
23	2/7/2015			\$67,717,353				\$22,433,672				\$90,151,025		
24	2/14/2015			\$69,949,998				\$25,572,367				\$95,522,365		
25	2/21/2015			\$72,422,148				\$31,832,665				\$104,254,813		
26	2/28/2015			\$72,883,830				\$21,827,140				\$94,710,970		
27	3/7/2015			\$73,726,744				\$22,528,352				\$96,255,096		
28	3/14/2015			\$71,026,808				\$25,171,358				\$96,198,166		
29	3/21/2015			\$69,174,125				\$25,837,564				\$95,011,689		
30	3/28/2015			\$66,886,917				\$18,604,870				\$85,491,787		
31	4/4/2015			\$71,218,020				\$19,883,667				\$91,101,687		
32	4/11/2015			\$65,970,648				\$18,875,485				\$84,846,133		
33	4/18/2015			\$64,922,280				\$19,723,048				\$84,645,328		
34	4/25/2015			\$60,578,829				\$18,978,148				\$79,556,977		
35	5/2/2015			\$64,244,545				\$19,029,632				\$83,274,177		
36	5/9/2015			\$65,679,029				\$19,350,478				\$85,029,507		
37	5/16/2015			\$63,627,971				\$19,865,609				\$83,493,580		
38	5/23/2015			\$61,902,451				\$19,892,846				\$81,795,297		
39	5/30/2015			\$61,264,953				\$20,014,636				\$81,279,589		
40	6/6/2015			\$64,019,948				\$21,782,886				\$85,802,834		
41	6/13/2015			\$59,742,598				\$19,736,748				\$79,479,346		
42	6/20/2015			\$59,010,863				\$17,095,336				\$76,106,199		

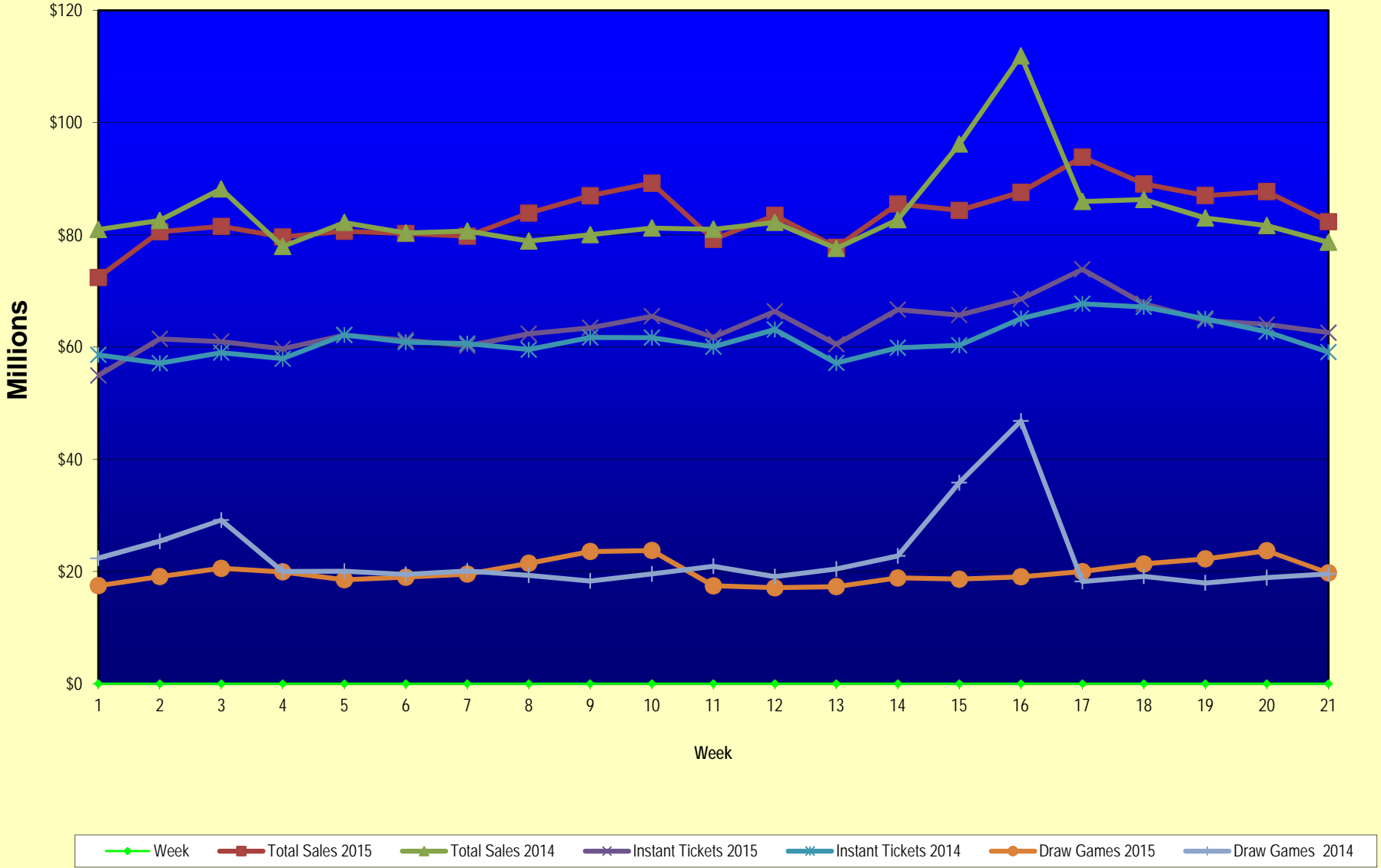
Texas Lottery Commission
Fiscal Year Over Year Change in Sales
Unaudited
FY 2015 Compared to FY 2014

			INSTANT TICKETS				DRAW GAMES				TOTAL SALES			
FY 2015			FY 2015	FY 2014	Difference	% change - Cumulative Sales	FY 2015	FY 2014	Difference	% change - Cumulative Sales	FY 2015	FY 2014	Difference	% change - Cumulative Sales
Week	Week	Ending												
43	6/27/2015			\$58,102,191				\$17,635,736				\$75,737,927		
44	7/4/2015			\$61,566,071				\$18,521,529				\$80,087,600		
45	7/11/2015			\$58,729,674				\$17,913,387				\$76,643,061		
46	7/18/2015			\$58,202,035				\$17,602,032				\$75,804,067		
47	7/25/2015			\$57,220,932				\$17,736,889				\$74,957,821		
48	8/1/2015			\$64,207,294				\$18,208,743				\$82,416,037		
49	8/8/2015			\$60,066,007				\$19,022,945				\$79,088,952		
50	8/15/2015			\$58,374,809				\$18,567,246				\$76,942,055		
51	8/22/2015			\$57,277,475				\$18,916,460				\$76,193,935		
52	8/29/2015			\$61,884,256				\$17,283,925				\$79,168,181		
	8/31/2015 **			\$7,949,803				\$706,956				\$8,656,759		
Total thru Current Week			\$1,334,297,496	\$1,286,579,469	\$47,718,027	3.7%	\$418,427,802	\$473,451,541	(\$55,023,739)	-11.6%	\$1,752,725,298	\$1,760,031,010	(\$7,305,712)	-0.4%
Fiscal Year Total			\$1,334,297,496	\$3,280,229,170			\$418,427,802	\$1,104,367,893			\$1,752,725,298	\$4,384,597,063		

* FY 15 includes 6 days

** FY 15 includes 2 days; FY 14 includes 1 day

Texas Lottery Commission Fiscal Year Over Year Change in Sales



Note: Week 1 is not a full week of sales as this report is prepared on a Fiscal Year basis.

Texas Lottery Commission
Instant Tickets by Price Point
Sales, Prize Expense, Sales Contribution and Payout Percentage With Year Over Year Changes
Unaudited

Fiscal Year	Price Point	# of Active Games	FY Sales	% of Instant Ticket Sales	Year over Year Change in Sales	FY Prize Expense	Year over Year Change in Prize Expense	FY Sales Contribution	Year over Year Change in Contribution	Average Prize Payout %	Year over Year Change in Payout %
2014	\$1.00	24	73,826,248	5.7%		44,249,978		29,576,270		59.9%	-1.3%
Through	\$2.00	30	156,484,164	12.2%		101,593,591		54,890,573		64.9%	-0.1%
1/25/2014	\$3.00	14	132,859,977	10.3%		86,973,403		45,886,574		65.5%	-0.1%
	\$5.00	44	431,172,350	33.5%		292,791,274		138,381,076		67.9%	-0.2%
	\$10.00	13	234,486,530	18.2%		165,046,281		69,440,249		70.4%	-1.0%
	\$20.00	9	210,633,900	16.4%		157,715,185		52,918,715		74.9%	0.0%
	\$50.00	2	47,116,300	3.7%		36,578,706		10,537,594		77.6%	0.0%
Total		136	\$1,286,579,469			\$884,948,417		\$401,631,052		68.8%	-0.2%
2015	\$1.00	18	68,184,519	5.1%		41,539,901		26,644,618		60.9%	1.7%
thru	\$2.00	28	140,085,576	10.5%		92,210,513		47,875,063		65.8%	1.5%
1/24/2015	\$3.00	13	133,207,806	10.0%		87,805,793		45,402,013		65.9%	0.4%
	\$5.00	39	424,025,585	31.8%		288,059,022		135,966,563		67.9%	0.0%
	\$10.00	14	262,552,580	19.7%		185,030,246		77,522,334		70.5%	0.2%
	\$20.00	9	245,570,980	18.4%		184,106,441		61,464,539		75.0%	0.1%
	\$50.00	3	60,670,450	4.5%		47,152,136		13,518,314		77.7%	0.1%
Total		124	\$1,334,297,496			\$925,904,052		\$408,393,444		69.4%	0.7%
Variance	\$1.00	-6	-5,641,729		-7.6%	-2,710,077	-6.1%	-2,931,652	-9.9%	0.98%	
2015 to	\$2.00	-2	-16,398,588		-10.5%	-9,383,078	-9.2%	-7,015,510	-12.8%	0.90%	
2014	\$3.00	-1	347,829		0.3%	832,391	1.0%	-484,562	-1.1%	0.45%	
	\$5.00	-5	-7,146,765		-1.7%	-4,732,252	-1.6%	-2,414,513	-1.7%	0.03%	
	\$10.00	1	28,066,050		12.0%	19,983,965	12.1%	8,082,085	11.6%	0.09%	
	\$20.00	0	34,937,080		16.6%	26,391,256	16.7%	8,545,824	16.1%	0.09%	
	\$50.00	1	13,554,150		28.8%	10,573,430	28.9%	2,980,720	28.3%	0.08%	
Total		-12	\$47,718,027		3.7%	\$40,955,635	4.6%	\$6,762,392	1.7%	0.61%	

Notes - Instant Ticket Variances

Texas Lottery Commission
Instant Tickets by Price Point
Sales, Prize Expense, Sales Contribution and Payout Percentage With Year Over Year Changes
 Unaudited

			FY 2015		FY 2014	Difference
Sales	\$1 - \$5		\$765,503,486		\$794,342,739	-\$28,839,253
Prize Exp.	\$1 - \$5		\$509,615,229		\$525,608,245	-\$15,993,016
Sales Cont.	\$1 - \$5		\$255,888,257		\$268,734,494	-\$12,846,237
Prize Exp. %	\$1 - \$5		66.6%		66.2%	0.4%
			FY 2015		FY 2014	Difference
Sales	\$10 - \$50		\$568,794,010		\$492,236,730	\$76,557,280
Prize Exp.	\$10 - \$50		\$416,288,823		\$359,340,172	\$56,948,651
Sales Cont.	\$10 - \$50		\$152,505,187		\$132,896,558	\$19,608,629
Prize Exp. %	\$10 - \$50		73.2%		73.0%	0.2%
			FY 2015		FY 2014	Difference
Sales	Instant		\$1,334,297,496		\$1,286,579,469	\$47,718,027
Prize Exp.	Instant		\$925,904,052		\$884,948,417	\$40,955,635
Sales Cont.	Instant		\$408,393,444		\$401,631,052	\$6,762,392
Prize Exp. %	Instant		69.4%		68.8%	0.6%

			FY 2015		FY 2014	Difference
Sales	\$1 - \$10		\$1,028,056,066		\$1,028,829,269	-\$773,203
Prize Exp.	\$1 - \$10		\$694,645,475		\$690,654,526	\$3,990,949
Sales Cont.	\$1 - \$10		\$333,410,591		\$338,174,743	-\$4,764,152
Prize Exp. %	\$1 - \$10		67.6%		67.1%	0.4%
			FY 2015		FY 2014	Difference
Sales	\$20 - \$50		\$306,241,430		\$257,750,200	\$48,491,230
Prize Exp.	\$20 - \$50		\$231,258,577		\$194,293,891	\$36,964,686
Sales Cont.	\$20 - \$50		\$74,982,853		\$63,456,309	\$11,526,544
Prize Exp. %	\$20 - \$50		75.5%		75.4%	0.1%
			FY 2015		FY 2014	Difference
Sales	Instant		\$1,334,297,496		\$1,286,579,469	\$47,718,027
Prize Exp.	Instant		\$925,904,052		\$884,948,417	\$40,955,635
Sales Cont.	Instant		\$408,393,444		\$401,631,052	\$6,762,392
Prize Exp. %	Instant		69.4%		68.8%	0.6%

Texas Lottery Commission
Weekly Sales Summary
& Comparison to Previous Week
 Unaudited

	Week Ending 1/24/2015	% of Sales	Week Ending 1/17/2015	% of Sales	\$ change	% change
	<u>THIS WEEK</u>		<u>LAST WEEK</u>			
Total Sales	<u>\$82,334,598</u>		<u>\$87,709,783</u>		<u>-\$5,375,186</u>	-6.13%
Instant Tickets	<u>\$62,569,156</u>	76.0%	<u>\$64,015,166</u>	73.0%	<u>-\$1,446,010</u>	-2.26%
Lotto	\$2,172,603	2.6%	\$2,321,110	2.6%	-\$148,507	-6.40%
Lotto Extra	\$340,335	0.4%	\$362,124	0.4%	-\$21,789	-6.02%
Pick 3	\$4,515,824	5.5%	\$4,713,502	5.4%	-\$197,678	-4.19%
Pick 3 Sum It Up	\$94,602	0.1%	\$94,319	0.1%	\$284	0.30%
Cash Five	\$932,895	1.1%	\$961,349	1.1%	-\$28,454	-2.96%
Texas Two Step	\$880,883	1.1%	\$870,940	1.0%	\$9,943	1.14%
Mega Millions	\$2,000,036	2.4%	\$5,796,919	6.6%	-\$3,796,883	-65.50%
Megaplier	\$513,701	0.6%	\$1,219,766	1.4%	-\$706,065	-57.89%
Daily 4	\$1,607,911	2.0%	\$1,636,351	1.9%	-\$28,440	-1.74%
Daily 4 Sum It Up	\$97,318	0.1%	\$95,924	0.1%	\$1,394	1.45%
Powerball	\$5,280,704	6.4%	\$4,374,663	5.0%	\$906,041	20.71%
Power Play	\$641,822	0.8%	\$557,630	0.6%	\$84,192	15.10%
All or Nothing	\$686,808	0.8%	\$690,082	0.8%	-\$3,274	-0.47%
Monopoly	\$0	0.0%	-\$60	0.0%	\$60	-100.00%
Total Draw Game Sales	<u>\$19,765,442</u>		<u>\$23,694,617</u>		<u>-\$3,929,176</u>	-16.58%

* Totals may not sum due to rounding.

Texas Lottery Commission
Weekly Sales Summary
Unaudited

INSTANT TICKETS
TOP TEN SELLING GAMES

For the Week Ending: 1/24/15

Rank	Price Point	Game	Sales (Millions)
1	\$ 20	100X THE CASH	\$ 5.024
2	\$ 10	50X THE CASH	\$ 4.455
3	\$ 5	20X THE CASH	\$ 3.297
4	\$ 3	LOTERIA	\$ 2.517
5	\$ 50	MILLIONAIRES CLUB	\$ 2.311
6	\$ 5	CAESARS	\$ 2.201
7	\$ 5	\$100,000 CASHWORD-O-RAMA	\$ 2.069
8	\$ 10	\$200,000,000 CASH BLOWOUT	\$ 1.940
9	\$ 20	\$500 MILLION EXTREME CASH BLAST	\$ 1.862
10	\$ 20	ONE MILLION CASH	\$ 1.778

Texas Lottery Commission
Prize Payout Tracking Report
Unaudited

Through the Week Ending: 1/24/15

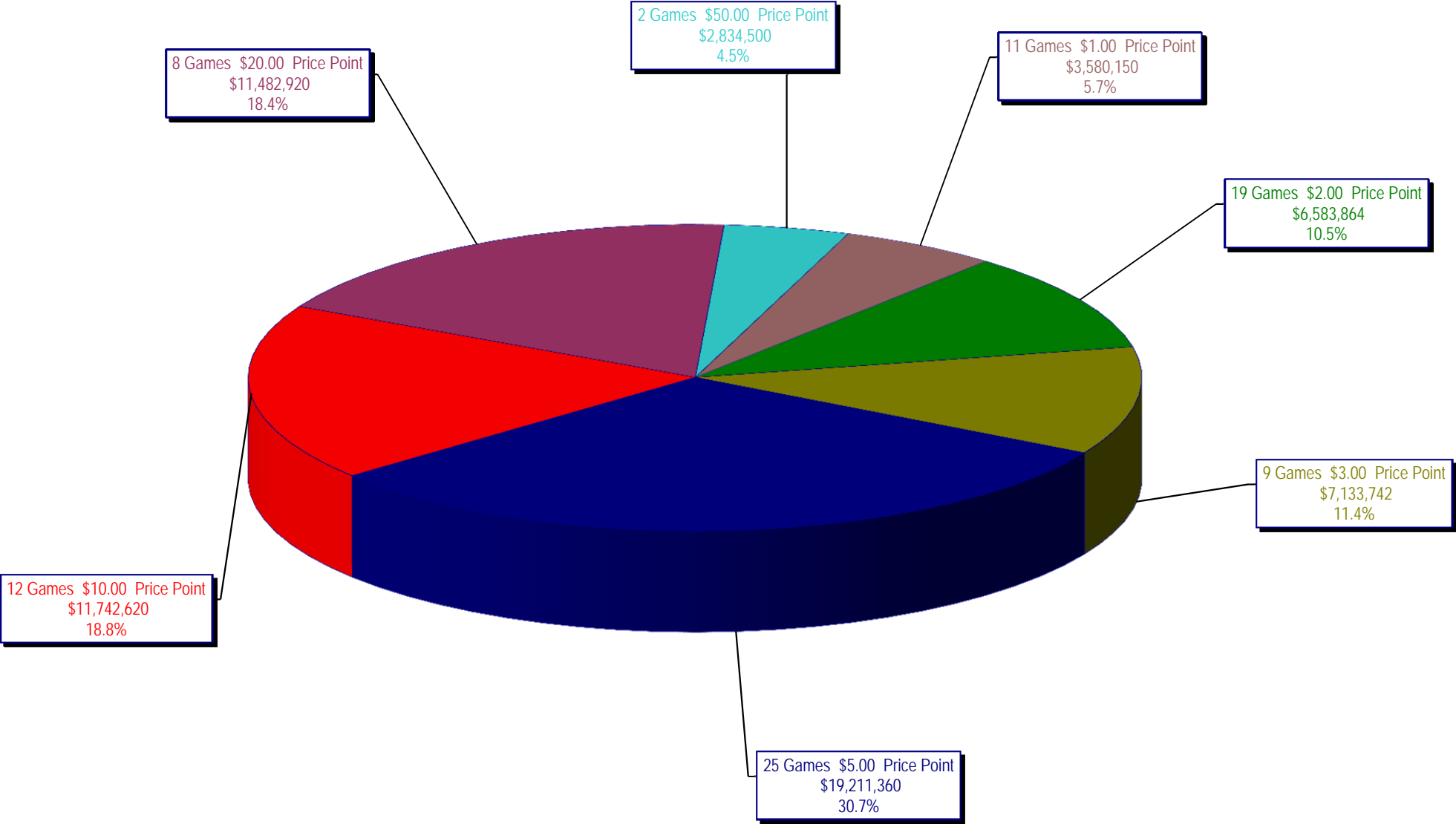
Draw Game Sales

		FY Sales Through Week Ending 1/24/2015		FY Prize Expense Through Week Ending 1/24/2015	Actual* Prize Payout	Base Payout (Prize Pool)
Lotto	\$	48,596,027	\$	24,401,377	50.21%	54.00%
Lotto Extra		7,371,936		4,025,604	54.61%	53.70%
Pick 3		99,715,222		47,603,270	47.74%	50.00%
Pick 3 Sum It Up		1,914,183		861,574	45.01%	50.00%
Cash Five		19,938,903		9,969,453	50.00%	50.00%
Texas Two Step		21,311,169		10,962,617	51.44%	50.00%
Mega Millions		68,824,039		35,138,759	51.06%	50.00%**
Megaplier		15,492,622		7,752,824	50.04%	N/A
Daily 4		33,825,630		16,226,950	47.97%	50.00%
Daily 4 Sum It Up		2,014,932		825,220	40.96%	50.00%
Powerball		71,942,282		36,036,586	50.09%	50.00%**
Power Play		9,379,466		4,698,272	50.09%	N/A
All or Nothing		15,444,862		9,686,780	62.72%	55.98%
Monopoly		2,656,530		3,617,028	136.16%	50.00%
Totals	\$	418,427,802	\$	211,806,312	50.62%	

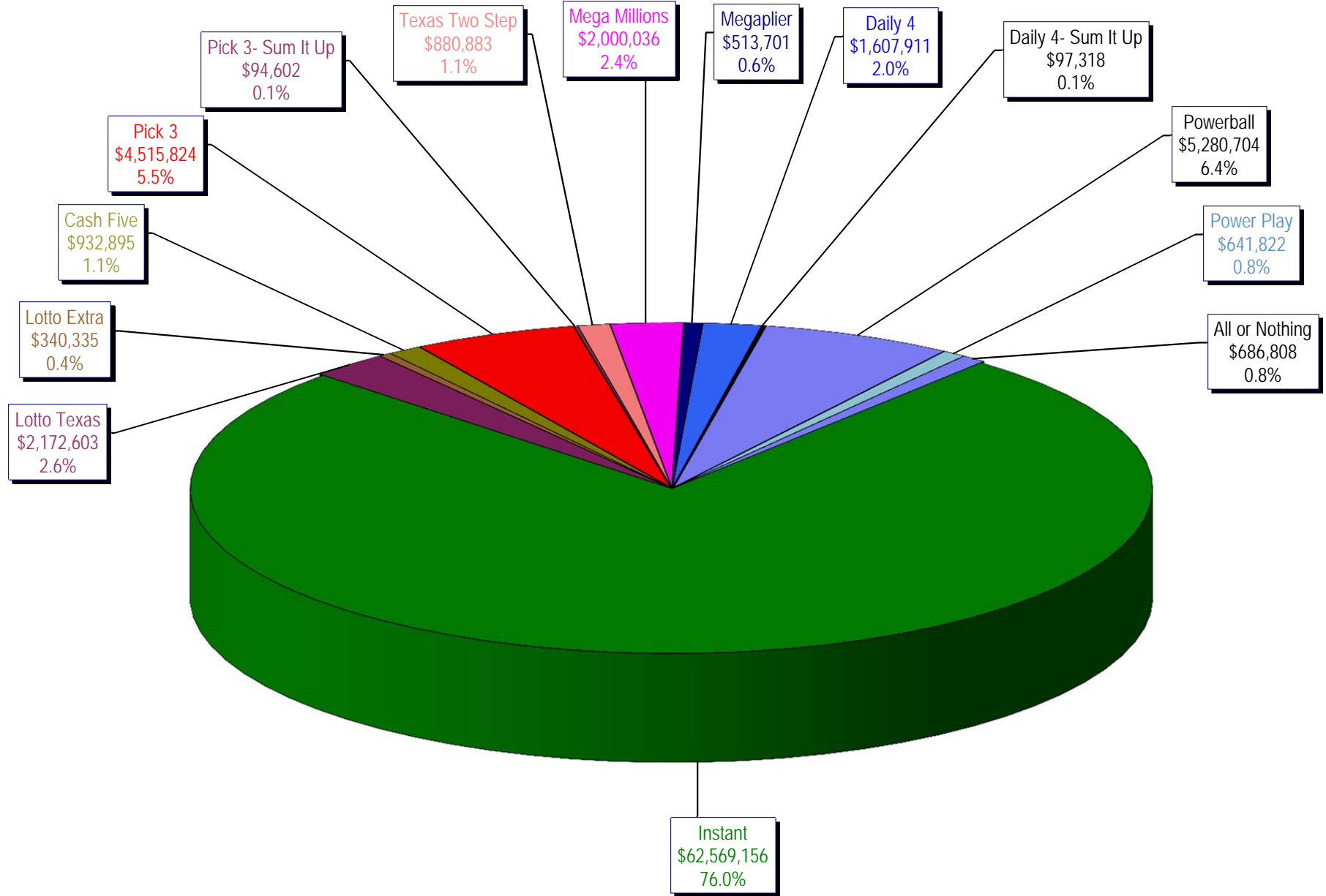
* Before Unclaimed Prizes

** Estimated; depends on # of guaranteed prizes won in Texas

Texas Lottery Commission
Instant Ticket Sales
For the Week Ending 1/24/15
(Unaudited)



**Texas Lottery Commission
All Game Sales
For the Week Ending 1/24/15
(Unaudited)**



Texas Lottery Commission - Weekly Sales Summary for FY 2015 (Unaudited)

Week Ended	Instant Games	New Games & Dates	Lotto Texas	Jackpot W	S	Lotto Extra	Pick 3	Pick 3 Sum It Up	Cash Five	Texas Two Step	Jackpot M	TH	Mega Millions	Jackpot T	F	Megaplier	Daily 4	Daily 4 Sum It Up	Powerball	Jackpot W	S	Power Play	All or Nothing	Monopoly	Jackpot F	Total	Per Cap.
9/06/2014*	62,861,604	1589 (\$1.N); 1592 (\$5.N) - 9/1/14	2,281,237	6	6.25	341,232	4,827,600	92,305	958,777	918,635	225	300	1,847,432	25	33	475,313	1,640,023	104,626	3,465,202	100	110	450,723	786,340			81,051,048	3.11
9/13/2014	61,436,533	0	2,299,834	6.5	6.75	344,225	4,787,666	91,850	960,067	1,214,553	425	575	1,992,737	41	52	501,468	1,571,433	97,036	3,957,407	127	149	497,718	781,088			80,533,614	3.09
9/20/2014	60,959,234	1647 (\$2.N); 1619 (\$5.N) - 9/15/14	2,307,003	7	7.25	347,119	4,624,949	89,960	952,214	1,582,291	750	925	2,149,120	62	72	528,733	1,536,913	95,355	4,985,548	171	196	597,868	770,822			81,527,128	3.13
9/27/2014	59,710,056	0	2,357,199	7.5	8.25	353,734	4,540,964	89,289	938,745	1,244,640	1,175	200	2,417,365	83	93	579,889	1,512,957	91,998	4,478,698	225	40	544,723	770,628			79,630,884	3.06
10/4/2014	62,119,854	0	2,385,322	9	9.5	360,937	4,942,321	94,197	971,047	854,141	200	200	2,966,004	105	120	692,825	1,588,795	98,392	2,443,237	50	60	348,166	786,038			80,651,275	3.09
10/11/2014	61,253,665	1608 (\$1.N); 1653 (\$5.N); 1651 (\$10.N) - 10/6/14	2,363,624	10.25	11	355,219	4,893,634	94,926	959,659	935,385	225	300	3,310,874	136	150	748,248	1,580,735	94,717	2,522,774	70	80	356,145	769,392			80,238,997	3.08
10/18/2014	60,230,048	0	2,267,582	11.5	5	343,643	4,664,420	92,081	946,399	842,255	200	225	3,839,669	166	180	841,086	1,522,939	90,307	2,937,145	90	100	398,723	752,154			79,768,450	3.06
10/25/2014	62,384,112	1655 (\$1.N); 1652 (\$2.N); 1638 (\$10.N); 1637 (\$20.N) - 10/20/14	2,201,043	5.25	5.5	330,460	4,585,640	89,676	933,854	823,726	200	225	4,755,898	200	224	990,074	1,560,894	96,697	3,449,128	110	125	444,897	746,246	467,410	15	83,859,755	3.22
11/1/2014	63,404,713	1648 (\$3.N) - 10/31/14	2,289,864	5.75	6	346,139	4,620,420	87,141	925,312	993,957	300	425	5,950,540	252	284	1,199,010	1,554,893	93,945	3,903,664	142	159	494,803	733,770	375,360	18	86,973,530	3.34
11/8/2014	65,486,719	1600 (\$2.N); 1656 (\$5.N) - 11/3/14	2,269,671	6.25	6.5	345,144	4,823,896	92,098	958,406	1,336,742	550	700	4,908,320	321	15	1,013,337	1,669,728	97,535	4,560,744	178	203	561,387	753,046	358,980	21	89,235,751	3.42
11/15/2014	61,745,521	1649 (\$5.N) - 11/13/14	2,172,758	6.75	7	326,413	4,582,139	86,975	936,682	1,604,425	900	1,100	1,863,118	20	26	471,023	1,587,677	91,661	2,341,252	40	50	329,995	730,482	325,005	15	79,195,125	3.04
11/22/2014	66,353,583	1591 (\$2.N); 1659 (\$5.N); 1650 (\$5.N) - 11/17/14	2,199,718	7.25	7.5	334,361	4,639,564	87,768	933,490	851,281	200	225	2,013,021	35	43	503,022	1,588,603	91,235	2,470,536	60	70	341,955	728,436	325,095	18	83,461,667	3.20
11/29/2014	60,471,184	0	2,214,747	7.75	8.5	337,671	4,624,896	88,080	912,039	955,695	300	400	2,040,181	52	61	503,117	1,577,411	90,692	2,632,388	80	90	362,091	681,192	282,930	21	77,774,313	2.98
12/6/2014	66,648,696	1603 (\$1.N); 1646 (\$2.N); 1645 (\$5.N) - 12/01/14	2,368,094	9	9.75	359,684	5,203,649	97,575	987,770	1,292,696	550	725	2,397,206	70	80	577,206	1,786,014	106,986	2,312,972	40	50	333,011	759,472	280,090	25	85,511,121	3.28
12/13/2014	65,708,630	1613 (\$3.N) - 12/10/14	2,390,912	10.25	11	360,296	4,965,326	90,906	968,380	860,861	200	225	2,763,671	91	102	644,993	1,730,629	100,850	2,441,310	60	70	346,197	743,438	241,830	25	84,358,228	3.24
12/20/2014	68,551,298	1664 (\$2.N); 1665 (\$5.N); 1663 (\$10.N) - 12/15/14	2,403,956	11.5	12.25	365,207	4,980,735	94,034	972,605	840,763	200	200	3,150,078	113	125	726,548	1,722,159	99,838	2,593,858	80	90	364,498	736,822	0		87,602,398	3.36
12/27/2014	73,858,618	0	2,569,741	13	13.75	386,983	4,792,061	87,561	939,518	839,204	225	300	3,523,976	142	156	786,676	1,640,658	93,236	3,244,628	100	110	431,074	671,042	0		93,864,975	3.60
1/3/2015	67,733,268	0	2,579,932	14.5	5	391,775	4,873,207	92,090	972,634	794,716	200	225	4,061,330	172	188	895,771	1,677,541	97,009	3,730,196	120	131	487,253	701,714	0		89,088,435	3.42
1/10/2015	64,745,641	1661 (\$1.N); 1609 (\$3.N); 1666 (\$20.N) - 1/3/15	2,269,384	5.25	5.5	353,334	4,633,563	89,809	965,014	839,722	200	225	5,160,810	206	221	1,101,434	1,574,307	92,418	3,969,588	146	162	507,993	708,082	(110)		87,010,988	3.34
1/17/2015	64,015,166	0	2,321,110	5.75	6	362,124	4,713,502	94,319	961,349	870,940	300	200	5,796,919	246	270	1,219,766	1,636,351	95,924	4,374,663	176	194	557,630	690,082	(60)		87,709,783	3.37
1/24/2015	62,569,156	1657 (\$2.N); 1662 (\$5.N) - 1/19/15	2,172,603	6.25	6.5	340,335	4,515,824	94,602	932,895	880,883	225	300	2,000,036	15	20	513,701	1,607,911	97,318	5,280,704	208	230	641,822	686,808	0		82,334,598	3.16
weekly change	-2.3%		-6.4%			-6.0%	-4.2%	0.3%	-3.0%	1.1%			-65.5%			-57.9%	-1.7%	1.5%	20.7%			15.1%	-0.5%	-100.0%			-6.1%
SALES			SALES			SALES	SALES	SALES	SALES	SALES			SALES	SALES	SALES	SALES	SALES	SALES	SALES	SALES	SALES	SALES	SALES	SALES	SALES	SALES	% of Sales
Calendar Year to date	220,975,421		7,878,101			1,225,179	16,253,756	324,212	3,304,395	2,908,717			14,869,901			3,260,432	5,611,693	331,982	15,386,069			1,937,496	2,412,096	(170)		296,679,279	100.0%
Fiscal Year to date 2015	1,334,297,496		48,596,027			7,371,936	99,715,222	1,914,183	19,938,903	21,311,169			68,824,039			15,492,622	33,825,630	2,014,932	71,942,282			9,379,466	15,444,862	2,656,530		1,752,725,298	100.0%
*Full week includes 1 day from FY14																											