



*WEEKLY SALES SUMMARY*

Unaudited

[Week Ending: 01/26/2013](#)

Texas Lottery Commission  
Fiscal Year to Date Sales Comparison  
Unaudited

Through the week ending 01/26/2013 (22 weeks)

Sales by Game	FY 2011 *	FY 2012 **	FY 2013	\$ Change		% Change	
				FY 2013 to FY 2011	FY 2013 to FY 2012	FY 2013 to FY 2011	FY 2013 to FY 2012
Instants	\$ 1,147,599,795	\$ 1,187,224,143	\$ 1,237,279,186	\$ 89,679,391	\$ 50,055,043	7.8%	4.2%
Lotto Texas	71,176,456	72,003,621	63,861,244	-7,315,212	-8,142,377	-10.3%	-11.3%
Pick 3	111,950,973	108,803,046	107,630,516	-4,320,458	-1,172,530	-3.9%	-1.1%
Pick 3 Sum It Up	2,276,268	2,219,269	2,021,037	-255,231	-198,232	-11.2%	-8.9%
Cash Five	26,638,383	26,589,600	23,018,035	-3,620,348	-3,571,565	-13.6%	-13.4%
Texas Two Step	19,752,259	26,049,623	23,828,859	4,076,600	-2,220,764	20.6%	-8.5%
Mega Millions	81,900,231	63,328,434	43,367,982	-38,532,249	-19,960,452	-47.0%	-31.5%
Megaplier	16,106,042	13,964,150	10,062,573	-6,043,469	-3,901,577	-37.5%	-27.9%
Daily 4	23,159,359	25,737,982	28,481,977	5,322,618	2,743,995	23.0%	10.7%
Daily 4 Sum It Up	1,819,915	1,899,543	1,881,329	61,415	-18,214	3.4%	-1.0%
Powerball	34,776,611	53,612,431	115,540,583	80,763,972	61,928,153	232.2%	115.5%
Power Play	8,399,593	11,139,909	11,612,943	3,213,350	473,035	38.3%	4.2%
All or Nothing	-	-	36,984,116	36,984,116	36,984,116	-	-
<b>Total</b>	<b>\$ 1,545,555,884</b>	<b>\$ 1,592,571,749</b>	<b>\$ 1,705,570,380</b>	<b>\$ 160,014,496</b>	<b>\$ 112,998,631</b>	<b>10.4%</b>	<b>7.1%</b>

\* 3 extra days

\*\* 2 extra days

Texas Lottery Commission  
Fiscal Year to Date Cumulative Average Sales Comparison  
Unaudited

Through the week ending 01/26/2013 (22 weeks)

Sales by Game	FY 2011	FY 2012	FY 2013
Instant	\$ 7,599,999	\$ 7,914,828	\$ 8,359,995
Lotto Texas	471,367	480,024	431,495
Pick 3	741,397	725,354	727,233
Pick 3 Sum It Up	15,075	14,795	13,656
Cash Five	176,413	177,264	155,527
Texas Two Step	130,810	173,664	161,006
Mega Millions	542,386	422,190	293,027
Megaplier	106,663	93,094	67,990
Daily 4	153,373	171,587	192,446
Daily 4 Sum It Up	12,052	12,664	12,712
Powerball	230,309	357,416	780,680
Power Play	55,626	74,266	78,466
All or Nothing	-	-	264,172 *
<b>Total</b>	<b>\$ <u>10,235,469</u></b>	<b>\$ <u>10,617,145</u></b>	<b>\$ <u>11,538,404</u></b>
	thru 01/29/2011 151 days	thru 01/28/2012 150 days	thru 01/26/2013 148 days * 140 days

Texas Lottery Commission  
Fiscal Year Over Year Change in Sales  
Unaudited  
FY 2013 Compared to FY 2012

Week	FY 2013 Week Ending	INSTANT TICKETS				DRAW GAMES				TOTAL SALES			
		FY 2013	FY 2012	Difference	% change - Cumulative Sales	FY 2013	FY 2012	Difference	% change - Cumulative Sales	FY 2013	FY 2012	Difference	% change - Cumulative Sales
1	9/1/2012**	\$9,611,328	\$25,147,181	(\$15,535,853)	-61.8%	\$3,712,535	\$9,704,561	(\$5,992,026)	-61.7%	\$13,323,863	\$34,851,742	(\$21,527,879)	-61.8%
2	9/8/2012	\$56,941,761	\$50,591,068	\$6,350,693	12.6%	\$19,305,417	\$17,681,853	\$1,623,564	9.2%	\$76,247,178	\$68,272,921	\$7,974,257	11.7%
3	9/15/2012	\$56,302,875	\$49,835,063	\$6,467,812	13.0%	\$20,857,230	\$16,842,326	\$4,014,904	23.8%	\$77,160,105	\$66,677,389	\$10,482,716	15.7%
4	9/22/2012	\$54,974,438	\$49,777,138	\$5,197,300	10.4%	\$20,570,277	\$17,504,800	\$3,065,477	17.5%	\$75,544,715	\$67,281,938	\$8,262,777	12.3%
5	9/29/2012	\$54,606,674	\$51,040,274	\$3,566,400	7.0%	\$20,462,690	\$18,653,100	\$1,809,591	9.7%	\$75,069,364	\$69,693,374	\$5,375,991	7.7%
6	10/6/2012	\$59,223,327	\$53,715,157	\$5,508,170	10.3%	\$19,279,973	\$17,225,680	\$2,054,293	11.9%	\$78,503,300	\$70,940,837	\$7,562,463	10.7%
7	10/13/2012	\$57,075,606	\$51,942,121	\$5,133,485	9.9%	\$18,638,467	\$17,854,980	\$783,487	4.4%	\$75,714,073	\$69,797,101	\$5,916,972	8.5%
8	10/20/2012	\$56,630,134	\$52,837,769	\$3,792,365	7.2%	\$18,998,943	\$19,558,519	(\$559,577)	-2.9%	\$75,629,077	\$72,396,288	\$3,232,789	4.5%
9	10/27/2012	\$55,789,743	\$52,206,644	\$3,583,099	6.9%	\$20,130,190	\$21,504,565	(\$1,374,376)	-6.4%	\$75,919,933	\$73,711,209	\$2,208,724	3.0%
10	11/3/2012	\$58,142,777	\$56,265,310	\$1,877,467	3.3%	\$20,638,008	\$20,870,086	(\$232,079)	-1.1%	\$78,780,785	\$77,135,396	\$1,645,389	2.1%
11	11/10/2012	\$57,484,804	\$55,682,645	\$1,802,159	3.2%	\$20,862,872	\$17,862,404	\$3,000,468	16.8%	\$78,347,676	\$73,545,049	\$4,802,627	6.5%
12	11/17/2012	\$55,805,228	\$54,978,079	\$827,149	1.5%	\$21,660,705	\$17,879,985	\$3,780,721	21.1%	\$77,465,933	\$72,858,064	\$4,607,870	6.3%
13	11/24/2012	\$61,331,977	\$53,942,448	\$7,389,529	13.7%	\$27,172,853	\$16,877,145	\$10,295,708	61.0%	\$88,504,830	\$70,819,593	\$17,685,237	25.0%
14	12/1/2012	\$58,420,598	\$57,153,469	\$1,267,129	2.2%	\$62,797,943	\$18,298,636	\$44,499,307	243.2%	\$121,218,541	\$75,452,105	\$45,766,436	60.7%
15	12/8/2012	\$62,489,745	\$55,318,284	\$7,171,461	13.0%	\$19,630,155	\$19,033,326	\$596,829	3.1%	\$82,119,900	\$74,351,610	\$7,768,290	10.4%
16	12/15/2012	\$59,661,880	\$58,612,629	\$1,049,251	1.8%	\$20,064,982	\$20,045,279	\$19,704	0.1%	\$79,726,862	\$78,657,908	\$1,068,955	1.4%
17	12/22/2012	\$63,556,886	\$60,628,256	\$2,928,630	4.8%	\$19,084,653	\$22,572,986	(\$3,488,333)	-15.5%	\$82,641,539	\$83,201,242	(\$559,703)	-0.7%
18	12/29/2012	\$63,547,886	\$63,065,007	\$482,879	0.8%	\$17,359,874	\$19,948,521	(\$2,588,647)	-13.0%	\$80,907,760	\$83,013,528	(\$2,105,768)	-2.5%
19	1/5/2013	\$60,452,721	\$60,479,896	(\$27,175)	0.0%	\$18,833,047	\$17,331,888	\$1,501,159	8.7%	\$79,285,768	\$77,811,784	\$1,473,984	1.9%
20	1/12/2013	\$58,862,997	\$57,689,526	\$1,173,471	2.0%	\$18,879,167	\$17,568,732	\$1,310,435	7.5%	\$77,742,164	\$75,258,258	\$2,483,906	3.3%
21	1/19/2013	\$58,494,057	\$58,704,854	(\$210,797)	-0.4%	\$19,258,004	\$19,886,540	(\$628,537)	-3.2%	\$77,752,061	\$78,591,394	(\$839,334)	-1.1%
22	1/26/2013	\$57,871,744	\$57,611,325	\$260,419	0.5%	\$20,093,215	\$20,641,697	(\$548,483)	-2.7%	\$77,964,959	\$78,253,022	(\$288,064)	-0.4%
23	2/2/2013		\$65,553,366				\$23,689,855				\$89,243,221		
24	2/9/2013		\$75,070,485				\$28,361,583				\$103,432,068		
25	2/16/2013		\$66,679,947				\$19,588,615				\$86,268,562		
26	2/23/2013		\$64,868,899				\$19,965,388				\$84,834,287		
27	3/2/2013		\$67,135,065				\$20,947,181				\$88,082,246		
28	3/9/2013		\$68,299,006				\$22,152,639				\$90,451,645		
29	3/16/2013		\$65,013,692				\$23,351,718				\$88,365,410		
30	3/23/2013		\$64,035,255				\$27,416,609				\$91,451,864		
31	3/30/2013		\$65,135,991				\$84,628,987				\$149,764,978		
32	4/6/2013		\$66,860,957				\$19,899,400				\$86,760,357		
33	4/13/2013		\$64,028,898				\$20,220,141				\$84,249,039		
34	4/20/2013		\$63,623,892				\$20,974,282				\$84,598,174		
35	4/27/2013		\$61,743,623				\$20,267,388				\$82,011,011		
36	5/4/2013		\$64,851,962				\$20,642,982				\$85,494,944		
37	5/11/2013		\$65,472,556				\$19,140,768				\$84,613,324		
38	5/18/2013		\$60,572,658				\$18,342,814				\$78,915,472		
39	5/25/2013		\$58,959,028				\$18,618,060				\$77,577,088		
40	6/1/2013		\$57,409,086				\$19,014,645				\$76,423,731		
41	6/8/2013		\$59,845,545				\$20,527,958				\$80,373,503		
42	6/15/2013		\$57,021,498				\$19,386,186				\$76,407,684		

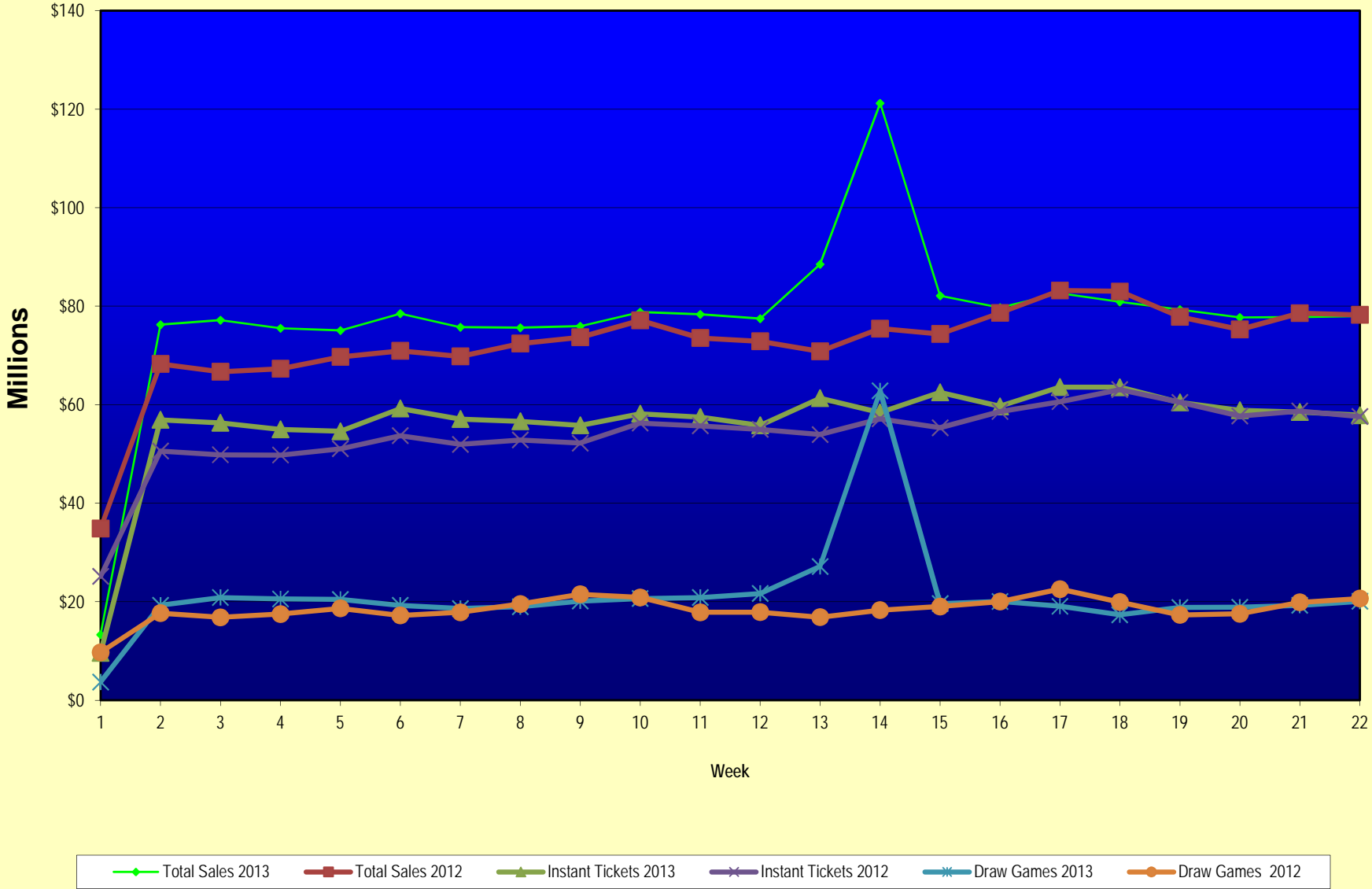
Note: Week 1 is not a full week of sales as this report is prepared on a Fiscal Year basis.

Texas Lottery Commission  
Fiscal Year Over Year Change in Sales  
Unaudited  
FY 2013 Compared to FY 2012

Week	FY 2013 Week Ending	INSTANT TICKETS				DRAW GAMES				TOTAL SALES			
		FY 2013	FY 2012	Difference	% change - Cumulative Sales	FY 2013	FY 2012	Difference	% change - Cumulative Sales	FY 2013	FY 2012	Difference	% change - Cumulative Sales
43	6/22/2013		\$57,892,076				\$17,594,154				\$75,486,230		
44	6/29/2013		\$57,497,435				\$18,153,658				\$75,651,093		
45	7/6/2013		\$60,345,000				\$19,059,152				\$79,404,152		
46	7/13/2013		\$57,683,321				\$18,751,043				\$76,434,364		
47	7/20/2013		\$57,083,343				\$18,769,201				\$75,852,544		
48	7/27/2013		\$54,006,781				\$18,934,103				\$72,940,884		
49	8/3/2013		\$56,557,409				\$20,206,705				\$76,764,114		
50	8/10/2013		\$57,799,452				\$22,832,120				\$80,631,572		
51	8/17/2013		\$54,845,724				\$25,435,624				\$80,281,348		
52	8/24/2013		\$55,661,277				\$17,524,474				\$73,185,751		
	8/31/2013		\$47,363,984				\$14,929,528				\$62,293,512		
Total thru Current Week		\$1,237,279,186	\$1,187,224,143	\$50,055,043	4.2%	\$468,291,194	\$405,347,606	\$62,943,588	15.5%	\$1,705,570,380	\$1,592,571,749	\$112,998,631	7.1%
Fiscal Year Total		\$1,237,279,186	\$3,086,141,354			\$468,291,194	\$1,104,674,559			\$1,705,570,380	\$4,190,815,913		

\*\* FY 2012 includes 3 days; FY 2013 includes 1 day.

### Texas Lottery Commission Fiscal Year Over Year Change in Sales



Note: Week 1 is not a full week of sales as this report is prepared on a Fiscal Year basis.

Texas Lottery Commission  
**Instant Tickets by Price Point**  
Sales, Prize Expense, Sales Contribution and Payout Percentage With Year Over Year Changes  
Unaudited

Fiscal Year	Price Point	# of Active Games	FY Sales	% of Instant Ticket Sales	Year over Year Change in Sales	FY Prize Expense	Year over Year Change in Prize Expense	FY Sales Contribution	Year over Year Change in Contribution	Average Prize Payout %	Year over Year Change in Payout %
2012	\$1.00	28	90,884,195	7.7%		55,741,088		35,142,857		61.3%	1.0%
thru	\$2.00	28	164,038,370	13.8%		106,645,656		57,392,714		65.0%	-0.8%
1/28/2012	\$3.00	15	144,954,045	12.2%		95,054,944		49,899,101		65.6%	0.0%
	\$5.00	36	378,185,540	31.9%		257,389,201		120,796,339		68.1%	0.2%
	\$7.00	4	18,211,613	1.5%		12,383,778		5,827,835		68.0%	0.0%
	\$10.00	15	188,208,980	15.9%		132,506,960		55,702,020		70.4%	-0.9%
	\$20.00	5	161,026,100	13.6%		120,109,308		40,916,792		74.6%	-0.1%
	\$50.00	2	41,715,300	3.5%		32,398,068		9,317,232		77.7%	0.0%
<b>Total</b>		<b>133</b>	<b>\$1,187,224,143</b>			<b>\$812,229,004</b>		<b>\$374,994,889</b>		<b>68.4%</b>	<b>-0.1%</b>
2013	\$1.00	27	77,008,563	6.2%		47,370,582		29,637,981		61.5%	1.5%
thru	\$2.00	29	161,455,870	13.0%		104,962,143		56,493,727		65.0%	-0.1%
1/26/2013	\$3.00	15	154,485,261	12.5%		101,303,147		53,182,114		65.6%	0.0%
	\$5.00	44	381,410,380	30.8%		259,023,510		122,386,870		67.9%	-0.1%
	\$7.00	2	15,799,602	1.3%		10,738,456		5,061,146		68.0%	0.0%
	\$10.00	12	215,333,770	17.4%		152,351,127		62,982,643		70.8%	-0.2%
	\$20.00	7	173,559,740	14.0%		129,925,977		43,633,763		74.9%	0.1%
	\$50.00	3	58,226,000	4.7%		45,206,269		13,019,731		77.6%	0.0%
<b>Total</b>		<b>139</b>	<b>\$1,237,279,186</b>			<b>\$850,881,212</b>		<b>\$386,397,974</b>		<b>68.8%</b>	<b>0.2%</b>
Variance	\$1.00	-1	-13,875,632		-15.3%	-8,370,505	-15.0%	-5,504,877	-15.7%	0.18%	
2013 to	\$2.00	1	-2,582,500		-1.6%	-1,683,513	-1.6%	-898,987	-1.6%	0.00%	
2012	\$3.00	0	9,531,216		6.6%	6,248,203	6.6%	3,283,013	6.6%	0.00%	
	\$5.00	8	3,224,840		0.9%	1,634,309	0.6%	1,590,531	1.3%	-0.15%	
	\$7.00	-2	-2,412,011		-13.2%	-1,645,322	-13.3%	-766,689	-13.2%	-0.03%	
	\$10.00	-3	27,124,790		14.4%	19,844,167	15.0%	7,280,623	13.1%	0.35%	
	\$20.00	2	12,533,640		7.8%	9,816,669	8.2%	2,716,971	6.6%	0.27%	
	\$50.00	1	16,510,700		39.6%	12,808,201	39.5%	3,702,499	39.7%	-0.03%	
<b>Total</b>		<b>6</b>	<b>\$50,055,043</b>		<b>4.2%</b>	<b>\$38,652,208</b>	<b>4.8%</b>	<b>\$11,403,085</b>	<b>3.0%</b>	<b>0.36%</b>	

Notes - Instant Ticket Variances

Texas Lottery Commission  
**Instant Tickets by Price Point**  
**Sales, Prize Expense, Sales Contribution and Payout Percentage With Year Over Year Changes**  
 Unaudited

			FY 2013		FY 2012	Difference
Sales	\$1 - \$7	1	\$790,159,676		\$796,273,763	-\$6,114,087
Prize Exp.	\$1 - \$7	1	\$523,397,839		\$527,214,667	-\$3,816,829
Sales Cont.	\$1 - \$7	1	\$266,761,837		\$269,059,096	-\$2,297,258
Prize Exp. %	\$1 - \$7	1	66.2%		66.2%	0.0%
			FY 2013		FY 2012	Difference
Sales	\$10 - \$50	2	\$447,119,510		\$390,950,380	\$56,169,130
Prize Exp.	\$10 - \$50	2	\$327,483,374		\$285,014,337	\$42,469,037
Sales Cont.	\$10 - \$50	1	\$119,636,136		\$105,936,043	\$13,700,093
Prize Exp. %	\$10 - \$50	2	73.2%		72.9%	0.3%
			FY 2013		FY 2012	Difference
Sales	Instant		\$1,237,279,186		\$1,187,224,143	\$50,055,043
Prize Exp.	Instant		\$850,881,212		\$812,229,004	\$38,652,208
Sales Cont.	Instant		\$386,397,974		\$374,995,139	\$11,402,835
Prize Exp. %	Instant		68.8%		68.4%	0.4%

			FY 2013		FY 2012	Difference
Sales	\$1 - \$10		\$1,005,493,446		\$984,482,743	\$21,010,703
Prize Exp.	\$1 - \$10		\$675,748,966		\$659,721,628	\$16,027,338
Sales Cont.	\$1 - \$10		\$329,744,480		\$324,761,115	\$4,983,365
Prize Exp. %	\$1 - \$10		67.2%		67.0%	0.2%
			FY 2013		FY 2012	Difference
Sales	\$20 - \$50		\$231,785,740		\$202,741,400	\$29,044,340
Prize Exp.	\$20 - \$50		\$175,132,246		\$152,507,377	\$22,624,870
Sales Cont.	\$20 - \$50		\$56,653,494		\$50,234,023	\$6,419,470
Prize Exp. %	\$20 - \$50		75.6%		75.2%	0.3%
			FY 2013		FY 2012	Difference
Sales	Instant		\$1,237,279,186		\$1,187,224,143	\$50,055,043
Prize Exp.	Instant		\$850,881,212		\$812,229,004	\$38,652,208
Sales Cont.	Instant		\$386,397,974		\$374,995,139	\$11,402,835
Prize Exp. %	Instant		68.8%		68.4%	0.4%



Texas Lottery Commission  
**Weekly Sales Summary**  
**& Comparison to Previous Week**  
 Unaudited

	Week Ending 01/26/2013	% of Sales	Week Ending 01/19/2013	% of Sales	\$ change	% change
	<u>THIS WEEK</u>		<u>LAST WEEK</u>			
Total Sales	<u>\$77,964,959</u>		<u>\$77,752,061</u>		<u>\$212,898</u>	0.27%
Instant Tickets	<u>\$57,871,744</u>	74.2%	<u>\$58,494,057</u>	75.2%	<u>-\$622,313</u>	-1.06%
Lotto	\$2,733,016	3.5%	\$2,670,967	3.4%	\$62,049	2.32%
Pick 3	\$4,936,726	6.3%	\$5,115,846	6.6%	-\$179,121	-3.50%
Pick 3 Sum It Up	\$91,918	0.1%	\$99,182	0.1%	-\$7,264	-7.32%
Cash Five	\$1,047,379	1.3%	\$1,069,099	1.4%	-\$21,720	-2.03%
Texas Two Step	\$1,178,148	1.5%	\$906,490	1.2%	\$271,658	29.97%
Mega Millions	\$2,367,780	3.0%	\$2,214,850	2.8%	\$152,930	6.90%
Megaplier	\$526,051	0.7%	\$498,541	0.6%	\$27,510	5.52%
Daily 4	\$1,401,635	1.8%	\$1,374,543	1.8%	\$27,093	1.97%
Daily 4 Sum It Up	\$87,842	0.1%	\$87,921	0.1%	-\$79	-0.09%
Powerball	\$3,808,150	4.9%	\$3,323,356	4.3%	\$484,794	14.59%
Power Play	\$454,194	0.6%	\$408,226	0.5%	\$45,968	11.26%
All or Nothing	\$1,460,376	1.9%	\$1,488,984	1.9%	-\$28,608	-1.92%
Total Draw Game Sales	<u>\$20,093,215</u>		<u>\$19,258,004</u>		<u>\$835,211</u>	4.34%

\* Totals may not sum due to rounding.

Texas Lottery Commission  
Weekly Sales Summary  
Unaudited

INSTANT TICKETS  
TOP TEN SELLING GAMES

For the Week Ending: 01/26/13

Rank	Price Point	Game	Sales (Millions)
1	\$ 10	10X MEGA MONEY	\$ 4.586
2	\$ 5	INSTANT RICHES	\$ 3.708
3	\$ 20	\$500 MILLION EXTREME CASH BLAST	\$ 2.509
4	\$ 5	\$100,000 WINNINGS	\$ 2.273
5	\$ 3	BONUS CASHWORD	\$ 2.118
6	\$ 3	LOTERIA TEXAS	\$ 2.107
7	\$ 50	\$7,500,000 FORTUNE	\$ 2.009
8	\$ 5	GOLDEN SPADES	\$ 1.973
9	\$ 10	\$200 MILLION CASH SPECTACULAR	\$ 1.822
10	\$ 20	\$500,000,000 FRENZY	\$ 1.821

Texas Lottery Commission  
Prize Payout Tracking Report  
Unaudited

Through Week Ending 01/26/13

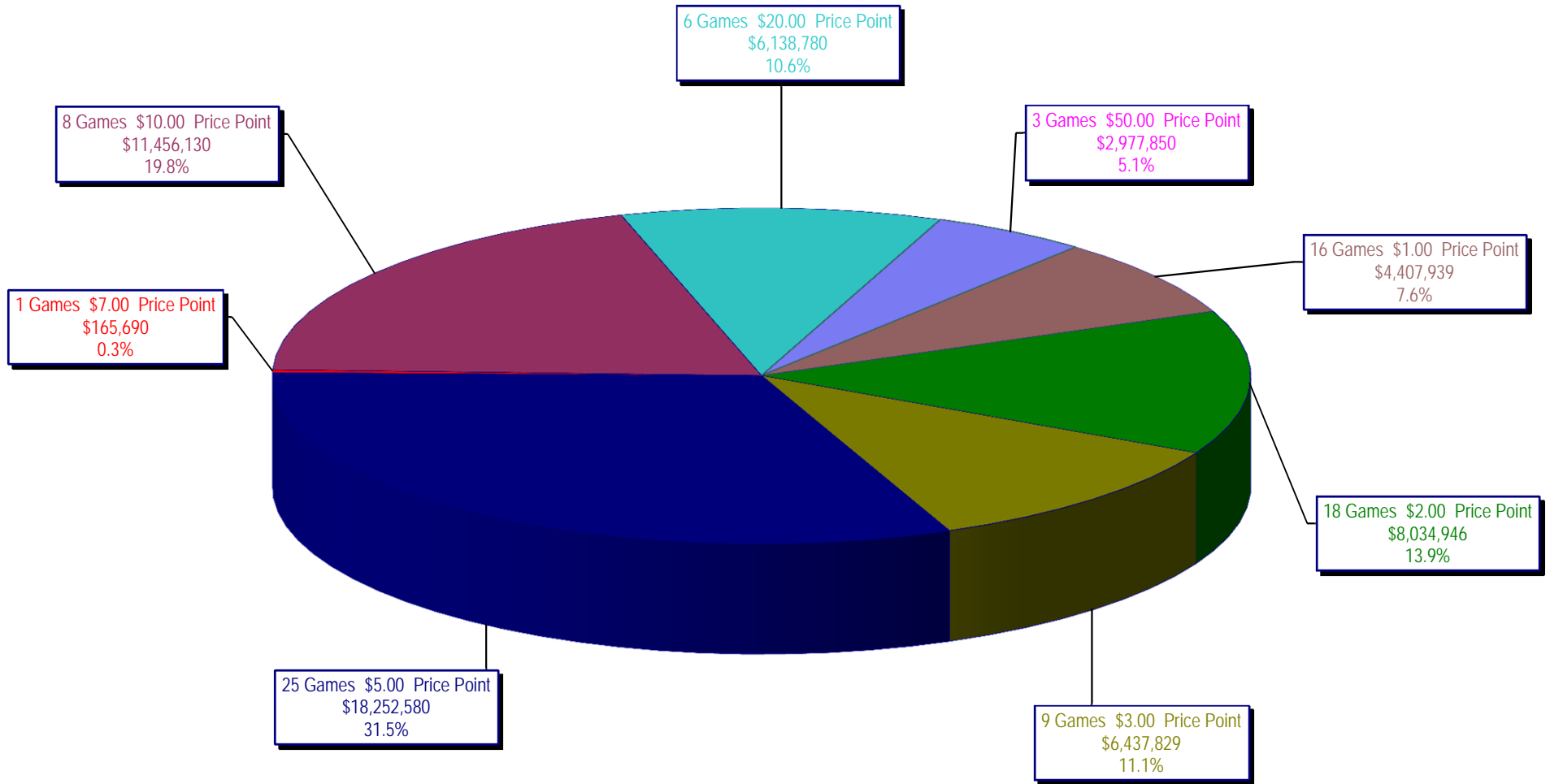
Draw Game Sales

		FY Sales Through Week Ending 1/26/2013		FY Prize Expense Through Week Ending 1/26/2013	Actual* Prize Payout	Base Payout (Prize Pool)
Lotto	\$	63,861,244	\$	43,672,900	68.39%	50.00%
Pick 3		107,630,516		56,528,520	52.52%	50.00%
Pick 3 Sum It Up		2,021,037		1,021,892	50.56%	50.00%
Cash Five		23,018,035		11,510,703	50.01%	50.00%
Texas Two Step		23,828,859		11,994,244	50.33%	50.00%
Mega Millions		43,367,982		21,254,725	49.01%	50.00%**
Megaplier		10,062,573		4,822,318	47.92%	N/A
Daily 4		28,481,977		14,769,250	51.85%	50.00%
Daily 4 Sum It Up		1,881,329		815,769	43.36%	50.00%
Powerball		115,540,583		61,013,819	52.81%	50.00%**
Power Play		11,612,943		6,593,662	56.78%	N/A
All or Nothing		36,984,116		21,752,888	58.82%	50.00%
<b>Totals</b>	\$	<b>468,291,194</b>	\$	<b>255,750,690</b>	<b>54.61%</b>	

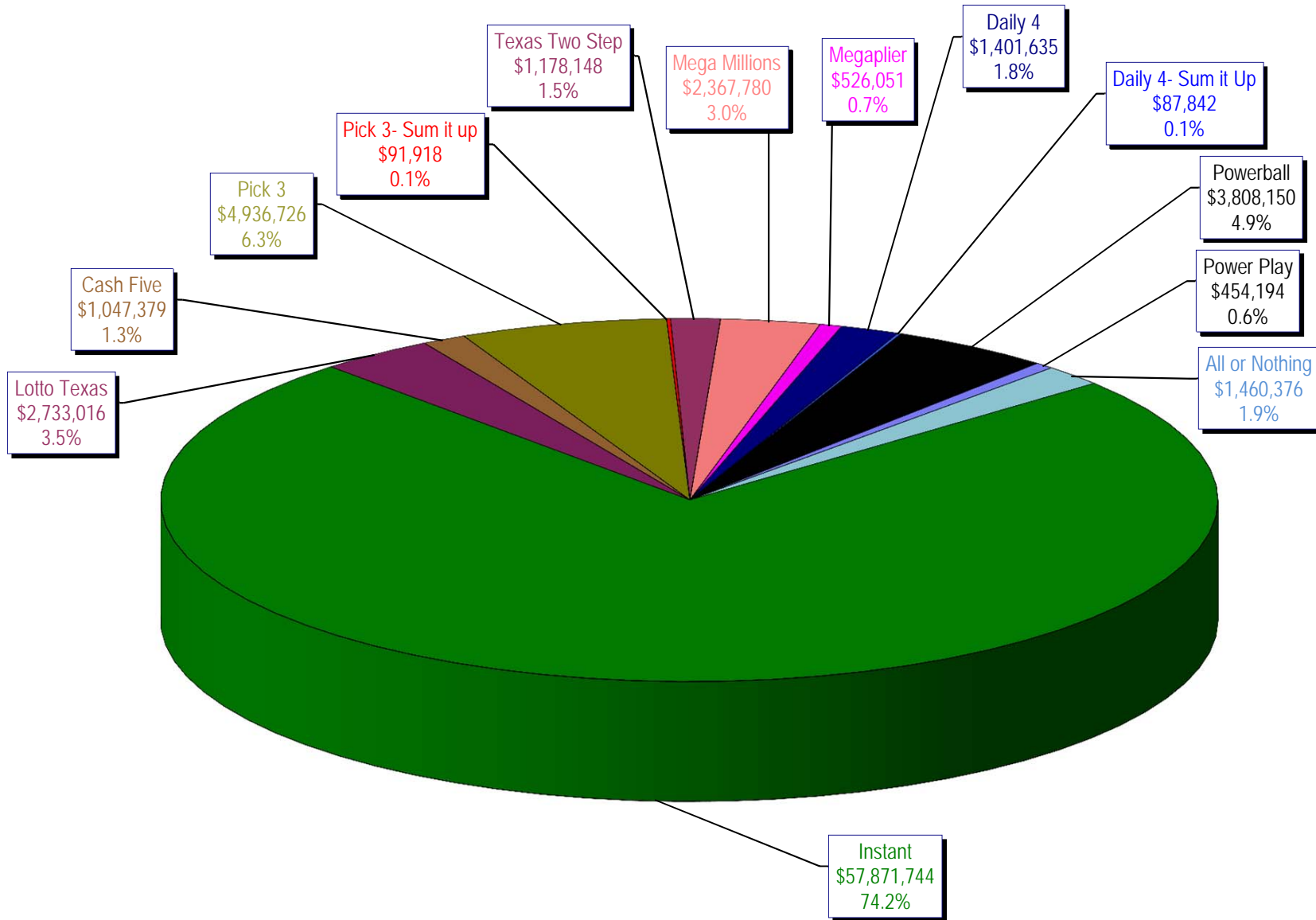
\* Before Unclaimed Prizes

\*\* Estimated; depends on # of guaranteed prizes won in Texas

Texas Lottery Commission  
Instant Ticket Sales  
For the Week Ending 01/26/13  
(Unaudited)



**Texas Lottery Commission  
All Game Sales  
For the Week Ending 01/26/13  
(Unaudited)**



Texas Lottery Commission - Weekly Sales Summary for FY 2013 (Unaudited)

Week Ended	Instant Games	New Games & Dates	Lotto Texas	Jackpot W S	Pick 3	Pick 3 Sum It Up	Cash Five	Texas Two Step	Jackpot M TH	Mega Millions	Jackpot T F	Megaplier	Daily 4	Daily 4 Sum It Up	Powerball	Jackpot W S	Power Play	All or Nothing	Total	Per Cap.
9/1/2012	56,975,312	1446 (\$1, N); 1444 (\$2, N) - 08/27/12	2,972,415	12 13	4,967,337	105,441	1,198,597	1,455,689	500 675	2,769,421	73 83	612,072	1,419,103	97,265	2,680,694	70 80	364,030		75,617,375	2.95
9/8/2012	56,941,761	1440 (\$2, N); 1458 (\$3, N); 1459 (\$5, N) - 09/03/12	3,005,564	14 15	5,112,132	106,959	1,185,494	1,179,003	875 200	3,140,536	93 105	665,392	1,412,279	99,861	3,002,910	90 100	395,287		76,247,178	2.97
9/15/2012	56,302,875	1452 (\$3, N) - 09/10/12	2,999,894	16 17	4,785,209	95,720	1,118,519	894,412	225 200	2,684,227	120 12	580,869	1,290,478	90,795	3,373,296	110 125	417,470	2,526,342	77,160,105	3.01
9/22/2012	54,974,438	1460 (\$1, N); 1461 (\$5, N) - 09/17/12	2,986,898	18 19	4,611,684	89,173	1,091,440	986,264	225 325	1,874,336	15 12	452,082	1,258,191	86,390	4,122,790	149 174	479,344	2,531,686	75,544,715	2.94
9/29/2012	54,606,674	1462 (\$2, N); 1472 (\$10, N) - 09/24/12	3,047,519	20 21	4,708,250	90,752	1,077,739	1,313,257	475 625	1,884,366	14 21	452,334	1,278,847	87,211	3,779,359	200 40	445,091	2,297,966	75,069,364	2.92
10/6/2012	59,223,327	1464 (\$5, N) - 10/01/12	3,164,231	22 23	4,947,571	96,251	1,121,146	1,188,386	800 200	2,055,918	28 36	482,303	1,310,612	89,270	2,266,428	50 40	312,877	2,244,980	78,503,300	3.06
10/13/2012	57,075,606	1465 (\$1, N); 1466 (\$20, N) - 10/08/2012	3,133,742	24 25	4,793,793	89,663	1,074,687	865,146	225 200	2,163,099	45 53	492,614	1,261,858	84,585	2,241,120	50 60	309,684	2,128,476	75,714,073	2.95
10/20/2012	56,630,134	1467 (\$1, N); 1468 (\$5, N) - 10/15/12	3,172,820	26 27	4,959,071	88,413	1,074,980	970,100	225 325	1,984,966	61 12	466,730	1,296,602	84,868	2,447,518	70 80	328,436	2,124,439	75,629,077	2.95
10/27/2012	55,789,743	1469 (\$2, N); 1470 (\$10, N) - 10/22/2012	3,204,694	28 29	5,550,567	96,242	1,063,201	1,226,578	450 600	1,778,725	13 21	430,528	1,381,019	91,618	2,914,062	90 100	371,273	2,021,684	75,919,933	2.96
11/3/2012	58,142,777	1503 (\$5, N) - 10/29/2012	3,392,650	30 31	5,501,964	101,742	1,078,593	860,073	200 225	1,950,117	27 32	462,385	1,393,099	93,773	3,466,242	110 124	424,170	1,913,200	78,780,785	3.07
11/10/2012	57,484,804	1475 (\$1, N); 1476 (\$3, N) - 11/05/2012	3,061,999	32 4	5,468,924	100,767	1,083,928	837,666	200 200	1,783,099	12 13	430,343	1,402,194	94,451	4,246,246	143 168	491,538	1,861,718	78,347,676	3.05
11/17/2012	55,805,228	1477 (\$2, N); 1478 (\$5, N) - 11/12/2012	2,599,190	5 6	5,248,059	91,989	1,059,723	920,319	225 300	1,841,571	19 26	440,783	1,345,121	88,391	5,638,425	185 214	615,323	1,771,812	77,465,933	3.02
11/24/2012	61,331,977	1394 (\$50, N) - 11/19/2012	2,768,876	7 8	5,086,879	91,409	1,021,878	883,407	425 200	2,003,365	33 41	472,723	1,300,693	85,037	10,768,045	250 325	1,053,006	1,637,536	88,504,830	3.45
12/1/2012	58,420,598	0	3,304,053	9 10	5,123,778	97,511	1,086,916	925,805	225 275	2,358,380	49 12	533,175	1,319,684	92,240	43,264,700	550 40	2,894,606	1,797,096	121,218,541	4.72
12/8/2012	62,489,745	1479 (\$1, N); 1485 (\$5, N) - 12/03/12	2,971,837	11 12	5,374,747	101,479	1,129,990	1,359,739	425 575	1,861,503	13 20	445,171	1,391,477	94,879	2,832,293	50 40	362,145	1,704,896	82,119,900	3.20
12/15/2012	59,661,880	0	3,087,087	13 14	5,221,374	98,173	1,104,769	1,928,422	775 1,000	1,933,357	27 35	456,193	1,398,647	88,811	2,808,938	50 40	364,704	1,574,508	79,726,862	3.11
12/22/2012	63,556,886	1481 (\$1, N); 1482 (\$2, N); 1483 (\$5, N) - 12/17/12	3,076,409	15 16	5,170,946	94,116	1,108,894	1,415,548	1,250 200	1,774,922	12 12	431,471	1,385,861	87,012	2,658,349	50 40	349,278	1,531,847	82,641,539	3.22
12/29/2012	63,547,886	0	2,869,329	17 18	4,868,470	90,224	1,041,264	922,869	200 225	1,670,747	18 25	400,587	1,289,758	79,651	2,413,294	50 40	324,222	1,389,460	80,907,760	3.15
1/5/2013	60,452,721	1484 (\$5, N) - 12/31/12	2,962,822	19 20	5,157,831	97,210	1,098,429	1,363,512	350 500	1,865,613	30 39	443,570	1,396,145	87,787	2,524,666	50 60	339,142	1,496,322	79,285,768	3.09
1/12/2013	58,862,997	1386 (\$2, N); 1536 (\$10, N) - 01/07/2013	2,588,023	4 5	4,974,232	92,872	1,079,444	1,622,926	700 900	2,036,427	47 55	471,998	1,345,510	81,625	2,755,940	70 80	349,383	1,480,788	77,742,164	3.03
1/19/2013	58,494,057	01/14/2013; 1538 (\$3, N) - 01/17/2013;	2,670,967	6 7	5,115,846	99,182	1,069,099	906,490	200 225	2,214,850	62 70	498,541	1,374,543	87,921	3,323,356	90 100	408,226	1,488,984	77,752,061	3.03
1/26/2013	57,871,744	0	2,733,016	8 9	4,936,726	91,918	1,047,379	1,178,148	325 475	2,367,780	80 89	526,051	1,401,635	87,842	3,808,150	110 130	454,194	1,460,376	77,964,959	3.04
weekly change	-1.1%		2.3%		-3.5%	-7.3%	-2.0%	30.0%		6.9%		5.5%	2.0%	-0.1%	14.6%		11.3%	-1.9%	0.3%	
<b>SALES</b>			<b>SALES</b>		<b>SALES</b>	<b>SALES</b>	<b>SALES</b>	<b>SALES</b>		<b>SALES</b>		<b>SALES</b>	<b>SALES</b>	<b>SALES</b>	<b>SALES</b>		<b>SALES</b>		<b>SALES</b>	<b>% of Sales</b>
Calendar Year to date	3,370,681,998		174,607,081		293,113,124	5,909,971	67,086,154	68,308,681		201,492,424		39,571,921	76,122,661	5,236,156	246,003,675		28,611,042	36,984,116	4,613,729,002	100.0%
Fiscal Year to date 2013	1,237,279,186		63,861,244		107,630,516	2,021,037	23,018,035	23,828,859		43,367,982		10,062,573	28,481,977	1,881,329	115,540,583		11,612,943	36,984,116	1,705,570,380	100.0%