



WEEKLY SALES SUMMARY

Unaudited

Week Ending: 1/27/2018

Texas Lottery Commission
Fiscal Year to Date Sales Comparison
Unaudited

Through the Week Ending 1/27/2018 (22 Weeks)

Sales by Game	FY 2016 *	FY 2017 **	FY 2018	\$ Change		% Change	
				FY 2018 to FY 2016	FY 2018 to FY 2017	FY 2018 to FY 2016	FY 2018 to FY 2017
Scratch Tickets	\$ 1,482,438,059	\$ 1,533,249,626	\$ 1,700,795,489	\$ 218,357,430	\$ 167,545,863	14.7%	10.9%
Lotto Texas	55,404,482	45,826,260	46,726,869	-8,677,613	900,609	-15.7%	2.0%
Lotto Extra	9,369,539	8,802,893	10,091,072	721,533	1,288,179	7.7%	14.6%
Pick 3	105,044,893	101,729,792	101,352,575	-3,692,318	-377,217	-3.5%	-0.4%
Pick 3 Sum It Up	2,120,407	1,929,963	2,012,385	-108,023	82,422	-5.1%	4.3%
Cash Five	19,488,454	18,077,773	17,355,529	-2,132,925	-722,244	-10.9%	-4.0%
Texas Two Step	21,257,586	23,194,934	19,890,717	-1,366,869	-3,304,217	-6.4%	-14.2%
Mega Millions	55,381,816	46,401,705	79,007,838	23,626,022	32,606,133	42.7%	70.3%
Megaplier	13,758,527	12,494,867	13,622,223	-136,304	1,127,356	-1.0%	9.0%
MM Just the Jackpot	-	-	730,560	730,560	730,560	-	-
Daily 4	36,605,152	38,514,429	43,564,252	6,959,100	5,049,823	19.0%	13.1%
Daily 4 Sum It Up	1,909,636	2,065,961	2,375,093	465,457	309,132	24.4%	15.0%
Powerball	297,155,980	89,798,647	117,576,645	-179,579,335	27,777,998	-60.4%	30.9%
Power Play	31,185,072	12,722,785	17,121,297	-14,063,775	4,398,512	-45.1%	34.6%
All or Nothing	13,075,090	11,891,198	11,833,480	-1,241,610	-57,718	-9.5%	-0.5%
Texas Triple Chance	11,602,391	6,423,284	5,187,516	-6,414,875	-1,235,768	-55.3%	-19.2%
Total	\$ 2,155,797,084	\$ 1,953,124,116	\$ 2,189,243,538	\$ 33,446,454	\$ 236,119,422	1.6%	12.1%

* 3 extra days

** 1 extra day

Texas Lottery Commission
Fiscal Year to Date Cumulative Average Sales Comparison
Unaudited

Through the Week Ending 1/27/2018 (22 Weeks)

Sales by Game	FY 2016	FY 2017	FY 2018
Scratch Tickets	\$ 9,752,882	\$ 10,221,664	\$ 11,414,735
Lotto Texas	364,503	305,508	313,603
Lotto Extra	61,642	58,686	67,725
Pick 3	691,085	678,199	680,219
Pick 3 Sum It Up	13,950	12,866	13,506
Cash Five	128,214	120,518	116,480
Texas Two Step	139,853	154,633	133,495
Mega Millions	364,354	309,345	530,254
Megaplier	90,517	83,299	91,424
MM Just the Jackpot	-	- **	7,941
Daily 4	240,823	256,763	292,378
Daily 4 Sum It Up	12,563	13,773	15,940
Powerball	1,954,974	598,658	789,105
Power Play	205,165	84,819	114,908
All or Nothing	86,020	79,275	79,419
Texas Triple Chance	* 92,082	42,822	34,816
Total	\$ <u>14,198,627</u>	\$ <u>13,020,827</u>	\$ <u>14,695,947</u>

thru 1/30/2016
152 days
* 126 days

thru 1/28/2017
150 days

thru 1/27/2018
149 days
** 92 days

Texas Lottery Commission
Fiscal Year Over Year Change in Sales
Unaudited
FY 2018 Compared to FY 2017

			SCRATCH TICKETS				DRAW GAMES				TOTAL SALES			
FY 2018			FY 2018	FY 2017	Difference	% change - Cumulative Sales	FY 2018	FY 2017	Difference	% change - Cumulative Sales	FY 2018	FY 2017	Difference	% change - Cumulative Sales
Week	Week Ending													
1	9/2/2017 *		\$23,058,926	\$32,980,266	(\$9,921,340)	-30.1%	\$6,902,847	\$10,218,656	(\$3,315,809)	-32.4%	\$29,961,773	\$43,198,922	(\$13,237,149)	-30.6%
2	9/9/2017		\$71,784,232	\$65,952,418	\$5,831,814	8.8%	\$18,779,001	\$19,635,377	(\$856,376)	-4.4%	\$90,563,233	\$85,587,795	\$4,975,438	5.8%
3	9/16/2017		\$72,828,393	\$66,196,270	\$6,632,123	10.0%	\$19,679,292	\$20,915,290	(\$1,235,999)	-5.9%	\$92,507,685	\$87,111,560	\$5,396,125	6.2%
4	9/23/2017		\$71,147,147	\$64,383,005	\$6,764,142	10.5%	\$18,601,742	\$17,451,165	\$1,150,577	6.6%	\$89,748,889	\$81,834,170	\$7,914,719	9.7%
5	9/30/2017		\$74,749,619	\$67,349,951	\$7,399,668	11.0%	\$18,436,682	\$17,519,852	\$916,830	5.2%	\$93,186,301	\$84,869,803	\$8,316,498	9.8%
6	10/7/2017		\$78,134,381	\$71,598,690	\$6,535,691	9.1%	\$19,297,281	\$18,211,107	\$1,086,174	6.0%	\$97,431,662	\$89,809,797	\$7,621,865	8.5%
7	10/14/2017		\$74,084,207	\$69,444,762	\$4,639,445	6.7%	\$19,185,335	\$18,075,261	\$1,110,074	6.1%	\$93,269,542	\$87,520,023	\$5,749,519	6.6%
8	10/21/2017		\$77,631,892	\$69,317,066	\$8,314,826	12.0%	\$19,573,636	\$18,422,336	\$1,151,300	6.2%	\$97,205,528	\$87,739,402	\$9,466,126	10.8%
9	10/28/2017		\$76,385,130	\$69,729,599	\$6,655,531	9.5%	\$18,788,634	\$18,535,248	\$253,386	1.4%	\$95,173,764	\$88,264,847	\$6,908,917	7.8%
10	11/4/2017		\$78,814,323	\$73,451,702	\$5,362,621	7.3%	\$19,564,629	\$20,151,939	(\$587,310)	-2.9%	\$98,378,952	\$93,603,641	\$4,775,312	5.1%
11	11/11/2017		\$78,572,697	\$70,998,320	\$7,574,377	10.7%	\$19,317,440	\$19,925,460	(\$608,020)	-3.1%	\$97,890,137	\$90,923,780	\$6,966,358	7.7%
12	11/18/2017		\$81,674,704	\$75,265,196	\$6,409,508	8.5%	\$19,938,001	\$21,424,637	(\$1,486,636)	-6.9%	\$101,612,705	\$96,689,833	\$4,922,872	5.1%
13	11/25/2017		\$84,916,870	\$68,983,157	\$15,933,713	23.1%	\$19,968,524	\$24,223,331	(\$4,254,808)	-17.6%	\$104,885,393	\$93,206,488	\$11,678,905	12.5%
14	12/2/2017		\$81,453,005	\$72,688,514	\$8,764,491	12.1%	\$21,685,175	\$17,653,328	\$4,031,847	22.8%	\$103,138,180	\$90,341,842	\$12,796,338	14.2%
15	12/9/2017		\$81,251,421	\$71,676,549	\$9,574,872	13.4%	\$21,277,106	\$18,150,590	\$3,126,516	17.2%	\$102,528,526	\$89,827,139	\$12,701,388	14.1%
16	12/16/2017		\$83,850,250	\$73,909,726	\$9,940,524	13.4%	\$23,199,797	\$19,814,333	\$3,385,464	17.1%	\$107,050,047	\$93,724,059	\$13,325,988	14.2%
17	12/23/2017		\$87,941,872	\$77,369,179	\$10,572,693	13.7%	\$27,161,624	\$19,276,415	\$7,885,209	40.9%	\$115,103,496	\$96,645,594	\$18,457,902	19.1%
18	12/30/2017		\$88,089,746	\$80,868,854	\$7,220,892	8.9%	\$36,811,359	\$19,289,161	\$17,522,199	90.8%	\$124,901,105	\$100,158,015	\$24,743,091	24.7%
19	1/6/2018		\$85,627,935	\$73,328,624	\$12,299,311	16.8%	\$61,522,424	\$18,611,644	\$42,910,781	230.6%	\$147,150,359	\$91,940,268	\$55,210,091	60.0%
20	1/13/2018		\$84,788,310	\$73,471,643	\$11,316,667	15.4%	\$19,797,694	\$20,351,397	(\$553,703)	-2.7%	\$104,586,004	\$93,823,040	\$10,762,964	11.5%
21	1/20/2018		\$79,736,335	\$72,229,342	\$7,506,993	10.4%	\$18,928,359	\$20,349,310	(\$1,420,951)	-7.0%	\$98,664,694	\$92,578,652	\$6,086,042	6.6%
22	1/27/2018		\$84,274,095	\$72,056,793	\$12,217,302	17.0%	\$20,031,471	\$21,668,657	(\$1,637,186)	-7.6%	\$104,305,566	\$93,725,450	\$10,580,116	11.3%
23	2/3/2018			\$77,292,806				\$22,161,789				\$99,454,595		
24	2/10/2018			\$78,699,192				\$22,100,245				\$100,799,437		
25	2/17/2018			\$77,864,124				\$24,776,465				\$102,640,589		
26	2/24/2018			\$80,287,015				\$28,133,116				\$108,420,131		
27	3/3/2018			\$87,500,184				\$20,213,859				\$107,714,043		
28	3/10/2018			\$84,966,053				\$21,024,757				\$105,990,810		
29	3/17/2018			\$82,972,977				\$20,434,291				\$103,407,268		
30	3/24/2018			\$82,217,628				\$20,282,992				\$102,500,620		
31	3/31/2018			\$86,271,920				\$19,497,142				\$105,769,062		
32	4/7/2018			\$81,499,404				\$17,854,294				\$99,353,698		
33	4/14/2018			\$81,831,134				\$17,865,636				\$99,696,770		
34	4/21/2018			\$80,531,863				\$18,337,257				\$98,869,120		
35	4/28/2018			\$81,433,819				\$18,956,981				\$100,390,800		
36	5/5/2018			\$84,857,262				\$19,489,624				\$104,346,886		
37	5/12/2018			\$81,090,824				\$19,420,237				\$100,511,061		
38	5/19/2018			\$80,557,866				\$20,939,291				\$101,497,157		
39	5/26/2018			\$78,141,293				\$21,072,651				\$99,213,944		
40	6/2/2018			\$78,991,820				\$23,569,252				\$102,561,072		

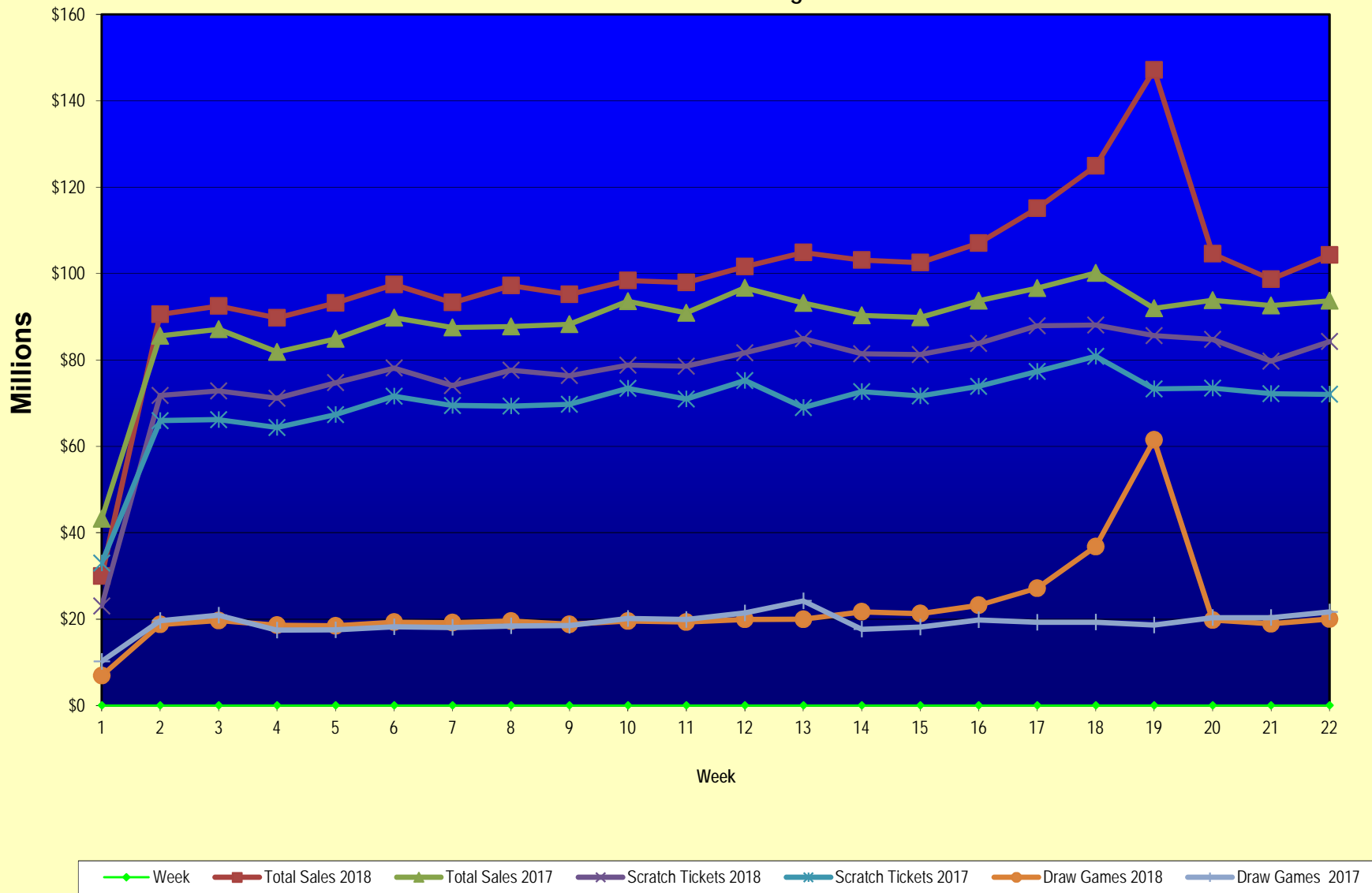
Texas Lottery Commission
Fiscal Year Over Year Change in Sales
Unaudited
FY 2018 Compared to FY 2017

			SCRATCH TICKETS				DRAW GAMES				TOTAL SALES			
FY 2018			FY 2018	FY 2017	Difference	% change - Cumulative Sales	FY 2018	FY 2017	Difference	% change - Cumulative Sales	FY 2018	FY 2017	Difference	% change - Cumulative Sales
Week	Week Ending													
43	6/23/2018			\$75,379,863				\$18,464,310				\$93,844,173		
44	6/30/2018			\$76,450,854				\$19,685,004				\$96,135,858		
45	7/7/2018			\$75,420,516				\$20,817,697				\$96,238,213		
46	7/14/2018			\$74,068,426				\$21,553,240				\$95,621,666		
47	7/21/2018			\$75,926,884				\$21,909,933				\$97,836,817		
48	7/28/2018			\$68,526,927				\$22,791,762				\$91,318,689		
49	8/4/2018			\$74,104,794				\$27,396,555				\$101,501,349		
50	8/11/2018			\$73,356,820				\$37,340,879				\$110,697,699		
51	8/18/2018			\$74,114,510				\$42,787,014				\$116,901,524		
52	8/25/2018			\$70,061,982				\$55,854,516				\$125,916,498		
	8/31/2018 **			\$43,727,573				\$9,679,652				\$53,407,225		
Total thru Current Week			\$1,700,795,489	\$1,533,249,626	\$167,545,863	10.9%	\$488,448,049	\$419,874,490	\$68,573,559	16.3%	\$2,189,243,538	\$1,953,124,116	\$236,119,422	12.1%
Fiscal Year Total			\$1,700,795,489	\$3,935,220,022			\$488,448,049	\$1,142,241,630			\$2,189,243,538	\$5,077,461,652		

* FY 18 includes 2 days; FY 17 includes 3 days

** FY 18 includes 6 days; FY 17 includes 5 days

Texas Lottery Commission Fiscal Year Over Year Change in Sales



Note: Week 1 is not a full week of sales as this report is prepared on a Fiscal Year basis.

Texas Lottery Commission
Scratch Tickets by Price Point
Sales, Prize Expense, Sales Contribution and Payout Percentage With Year Over Year Changes
Unaudited

Fiscal Year	Price Point	# of Active Games	FY Sales	% of Scratch Ticket Sales	Year over Year Change in Sales	FY Prize Expense	Year over Year Change in Prize Expense	FY Sales Contribution	Year over Year Change in Contribution	Average Prize Payout %	Year over Year Change in Payout %
2017	\$1.00	18	61,360,750	4.0%		37,068,589		24,292,161		60.4%	0.3%
Through	\$2.00	24	131,815,658	8.6%		85,893,790		45,921,868		65.2%	0.0%
1/28/2017	\$3.00	9	106,199,508	6.9%		70,009,621		36,189,887		65.9%	0.0%
	\$5.00	45	488,704,140	31.9%		332,069,765		156,634,375		67.9%	0.0%
	\$10.00	17	325,983,730	21.3%		229,743,102		96,240,628		70.5%	0.4%
	\$20.00	12	340,658,440	22.2%		255,268,668		85,389,772		74.9%	0.0%
	\$50.00	4	78,527,400	5.1%		61,103,457		17,423,943		77.8%	0.0%
Total		129	\$1,533,249,626			\$1,071,156,993		\$462,092,633		69.9%	0.4%
2018	\$1.00	18	64,713,427	3.8%		39,069,718		25,643,709		60.4%	0.2%
Through	\$2.00	20	118,862,654	7.0%		77,324,032		41,538,622		65.1%	-0.1%
1/27/2018	\$3.00	11	120,616,452	7.1%		79,580,895		41,035,557		66.0%	0.1%
	\$5.00	48	485,779,866	28.6%		330,292,230		155,487,637		68.0%	0.0%
	\$10.00	17	405,950,020	23.9%		284,435,436		121,514,584		70.1%	-0.3%
	\$20.00	15	374,545,720	22.0%		280,726,757		93,818,963		75.0%	0.0%
	\$50.00	4	130,327,350	7.7%		101,605,189		28,722,161		78.0%	0.1%
Total		133	\$1,700,795,489			\$1,193,034,256		\$507,761,232		70.1%	0.4%
Variance	\$1.00	0	3,352,677		5.5%	2,001,129	5.4%	1,351,548	5.6%	-0.04%	
2018 to	\$2.00	-4	-12,953,004		-9.8%	-8,569,758	-10.0%	-4,383,246	-9.5%	-0.11%	
2017	\$3.00	2	14,416,944		13.6%	9,571,274	13.7%	4,845,670	13.4%	0.06%	
	\$5.00	3	-2,924,274		-0.6%	-1,777,535	-0.5%	-1,146,738	-0.7%	0.04%	
	\$10.00	0	79,966,290		24.5%	54,692,334	23.8%	25,273,956	26.3%	-0.41%	
	\$20.00	3	33,887,280		9.9%	25,458,090	10.0%	8,429,190	9.9%	0.02%	
	\$50.00	0	51,799,950		66.0%	40,501,732	66.3%	11,298,218	64.8%	0.15%	
Total		4	\$167,545,863		10.9%	\$121,877,265	11.4%	\$45,668,598	9.9%	0.28%	
Notes - Scratch Ticket Variances											

Texas Lottery Commission
Scratch Tickets by Price Point
Sales, Prize Expense, Sales Contribution and Payout Percentage With Year Over Year Changes
Unaudited

			FY 2018		FY 2017	Difference
Sales	\$1 - \$5		\$789,972,399		\$788,080,056	\$1,892,343
Prize Exp.	\$1 - \$5		\$526,266,875		\$525,041,766	\$1,225,109
Sales Cont.	\$1 - \$5		\$263,705,524		\$263,038,290	\$667,234
Prize Exp. %	\$1 - \$5		66.6%		66.6%	0.0%
			FY 2018		FY 2017	Difference
Sales	\$10 - \$50		\$910,823,090		\$745,169,570	\$165,653,520
Prize Exp.	\$10 - \$50		\$666,767,382		\$546,115,227	\$120,652,156
Sales Cont.	\$10 - \$50		\$244,055,708		\$199,054,343	\$45,001,364
Prize Exp. %	\$10 - \$50		73.2%		73.3%	-0.1%
			FY 2018		FY 2017	Difference
Sales	Scratch		\$1,700,795,489		\$1,533,249,626	\$167,545,863
Prize Exp.	Scratch		\$1,193,034,258		\$1,071,156,993	\$121,877,265
Sales Cont.	Scratch		\$507,761,232		\$462,092,633	\$45,668,598
Prize Exp. %	Scratch		70.1%		69.9%	0.3%

			FY 2018		FY 2017	Difference
Sales	\$1 - \$10		\$1,195,922,419		\$1,114,063,786	\$81,858,633
Prize Exp.	\$1 - \$10		\$810,702,311		\$754,784,868	\$55,917,443
Sales Cont.	\$1 - \$10		\$385,220,108		\$359,278,918	\$25,941,190
Prize Exp. %	\$1 - \$10		67.8%		67.8%	0.0%
			FY 2018		FY 2017	Difference
Sales	\$20 - \$50		\$504,873,070		\$419,185,840	\$85,687,230
Prize Exp.	\$20 - \$50		\$382,331,947		\$316,372,125	\$65,959,822
Sales Cont.	\$20 - \$50		\$122,541,123		\$102,813,715	\$19,727,408
Prize Exp. %	\$20 - \$50		75.7%		75.5%	0.3%
			FY 2018		FY 2017	Difference
Sales	Scratch		\$1,700,795,489		\$1,533,249,626	\$167,545,863
Prize Exp.	Scratch		\$1,193,034,258		\$1,071,156,993	\$121,877,265
Sales Cont.	Scratch		\$507,761,232		\$462,092,633	\$45,668,598
Prize Exp. %	Scratch		70.1%		69.9%	0.3%

Texas Lottery Commission
Weekly Sales Summary
& Comparison to Previous Week
 Unaudited

	Week Ending 1/27/2018	% of Sales	Week Ending 1/20/2018	% of Sales	\$ change	% change
	<u>THIS WEEK</u>		<u>LAST WEEK</u>			
Total Sales	<u>\$104,305,566</u>		<u>\$98,664,694</u>		<u>\$5,640,872</u>	5.72%
Scratch Tickets	<u>\$84,274,095</u>	80.8%	<u>\$79,736,335</u>	80.8%	<u>\$4,537,760</u>	5.69%
Lotto	\$2,035,827	2.0%	\$1,966,838	2.0%	\$68,989	3.51%
Lotto Extra	\$453,370	0.4%	\$435,886	0.4%	\$17,484	4.01%
Pick 3	\$4,700,198	4.5%	\$4,577,006	4.6%	\$123,192	2.69%
Pick 3 Sum It Up	\$94,322	0.1%	\$94,097	0.1%	\$225	0.24%
Cash Five	\$814,607	0.8%	\$795,104	0.8%	\$19,503	2.45%
Texas Two Step	\$930,734	0.9%	\$1,022,928	1.0%	-\$92,194	-9.01%
Mega Millions	\$3,019,030	2.9%	\$2,755,698	2.8%	\$263,332	9.56%
Megaplier	\$484,896	0.5%	\$444,651	0.5%	\$40,245	9.05%
MM Just the Jackpot	\$26,847	0.0%	\$27,351	0.0%	-\$504	-1.84%
Daily 4	\$2,022,100	1.9%	\$1,874,998	1.9%	\$147,102	7.85%
Daily 4 Sum It Up	\$105,822	0.1%	\$99,795	0.1%	\$6,028	6.04%
Powerball	\$3,921,400	3.8%	\$3,508,516	3.6%	\$412,884	11.77%
Power Play	\$620,657	0.6%	\$562,582	0.6%	\$58,075	10.32%
All or Nothing	\$563,096	0.5%	\$531,264	0.5%	\$31,832	5.99%
Texas Triple Chance	\$238,566	0.2%	\$231,646	0.2%	\$6,920	2.99%
Total Draw Game Sales	<u>\$20,031,471</u>		<u>\$18,928,359</u>		<u>\$1,103,112</u>	5.83%

* Totals may not sum due to rounding.

Texas Lottery Commission
Weekly Sales Summary
Unaudited

SCRATCH TICKETS
TOP TEN SELLING GAMES

For the week ending: 1/27/2018

Rank	Price Point	Game	Sales (Millions)
1	\$ 20	MEGA 7'S	\$ 4.528
2	\$ 10	SUPER 7'S	\$ 4.397
3	\$ 5	DAZZLING DOLLARS X9	\$ 4.053
4	\$ 10	MEGA LOTERIA	\$ 3.981
5	\$ 20	\$1,000,000 BIG MONEY	\$ 3.903
6	\$ 50	TEXAS LOTTERY PLATINUM	\$ 3.343
7	\$ 5	LUCKY 7'S	\$ 3.253
8	\$ 10	\$50 OR \$100!	\$ 3.082
9	\$ 5	SUPER LOTERIA	\$ 2.915
10	\$ 20	INSTANT MILLIONAIRE	\$ 2.885

Texas Lottery Commission
Prize Payout Tracking Report
Unaudited

Through the week ending: 1/27/2018

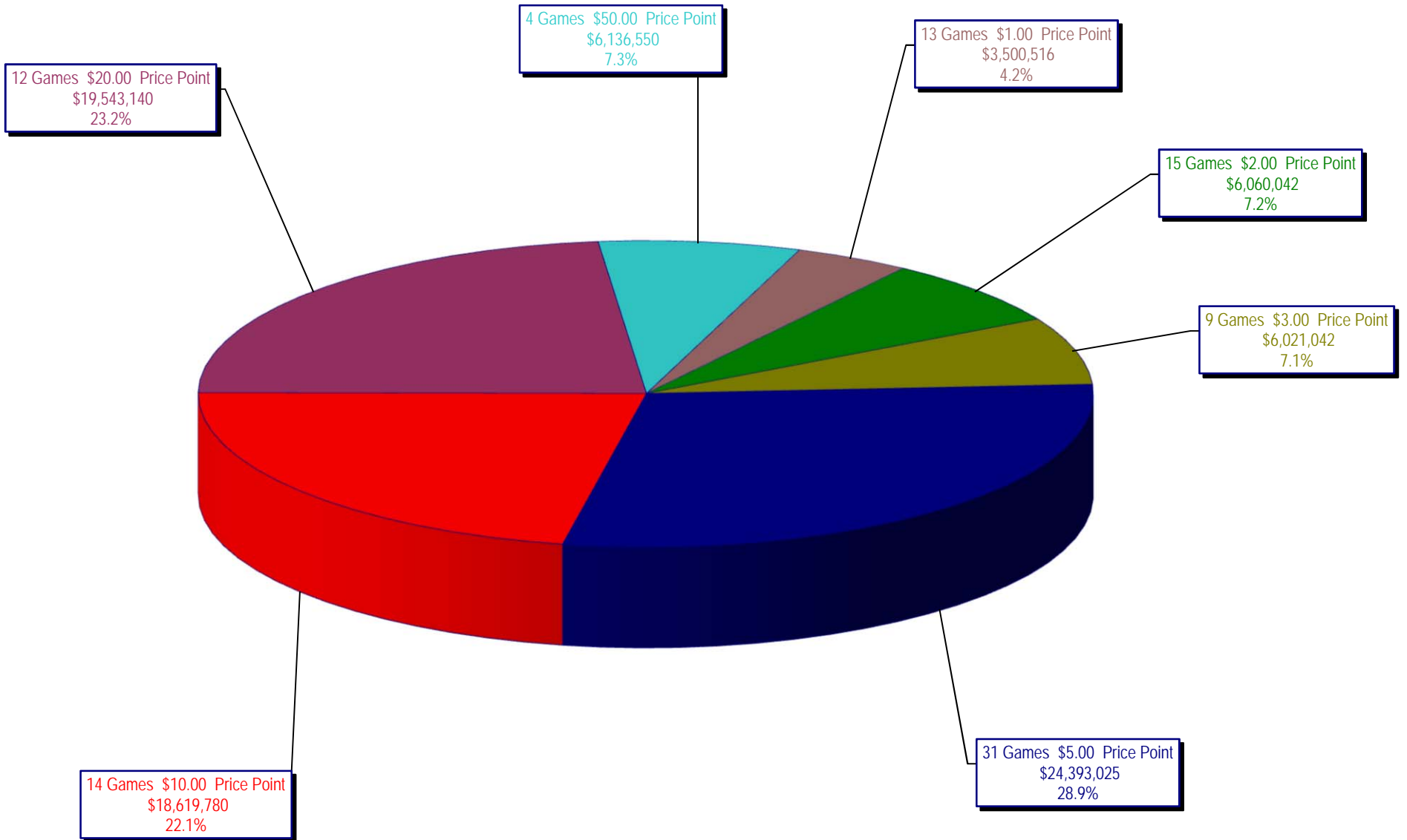
Draw Game Sales

	FY Sales Through Week Ending 1/27/2018	FY Prize Expense Through Week Ending 1/27/2018	Actual* Prize Payout	Base Payout (Prize Pool)
Lotto	\$ 46,726,869	\$ 28,962,399	61.98%	50.00%
Lotto Extra	10,091,072	5,704,866	56.53%	53.70%
Pick 3	101,352,575	48,184,010	47.54%	50.00%
Pick 3 Sum It Up	2,012,385	941,919	46.81%	50.00%
Cash Five	17,355,529	8,677,865	50.00%	50.00%
Texas Two Step	19,890,717	9,962,418	50.09%	50.00%
Mega Millions	79,007,838	41,435,680	52.45%	50.00%**
Megaplier	13,622,223	6,976,384	51.21%	N/A
MM Just the Jackpot	730,560	362,614	49.64%	50.00%**
Daily 4	43,564,252	26,021,650	59.73%	50.00%
Daily 4 Sum It Up	2,375,093	987,894	41.59%	50.00%
Powerball	117,576,645	58,953,089	50.14%	50.00%**
Power Play	17,121,297	8,589,018	50.17%	N/A
All or Nothing	11,833,480	7,000,538	59.16%	55.98%
Texas Triple Chance	5,187,516	2,560,801	49.36%	54.42%
Totals	\$ 488,448,049	\$ 255,321,146	52.27%	

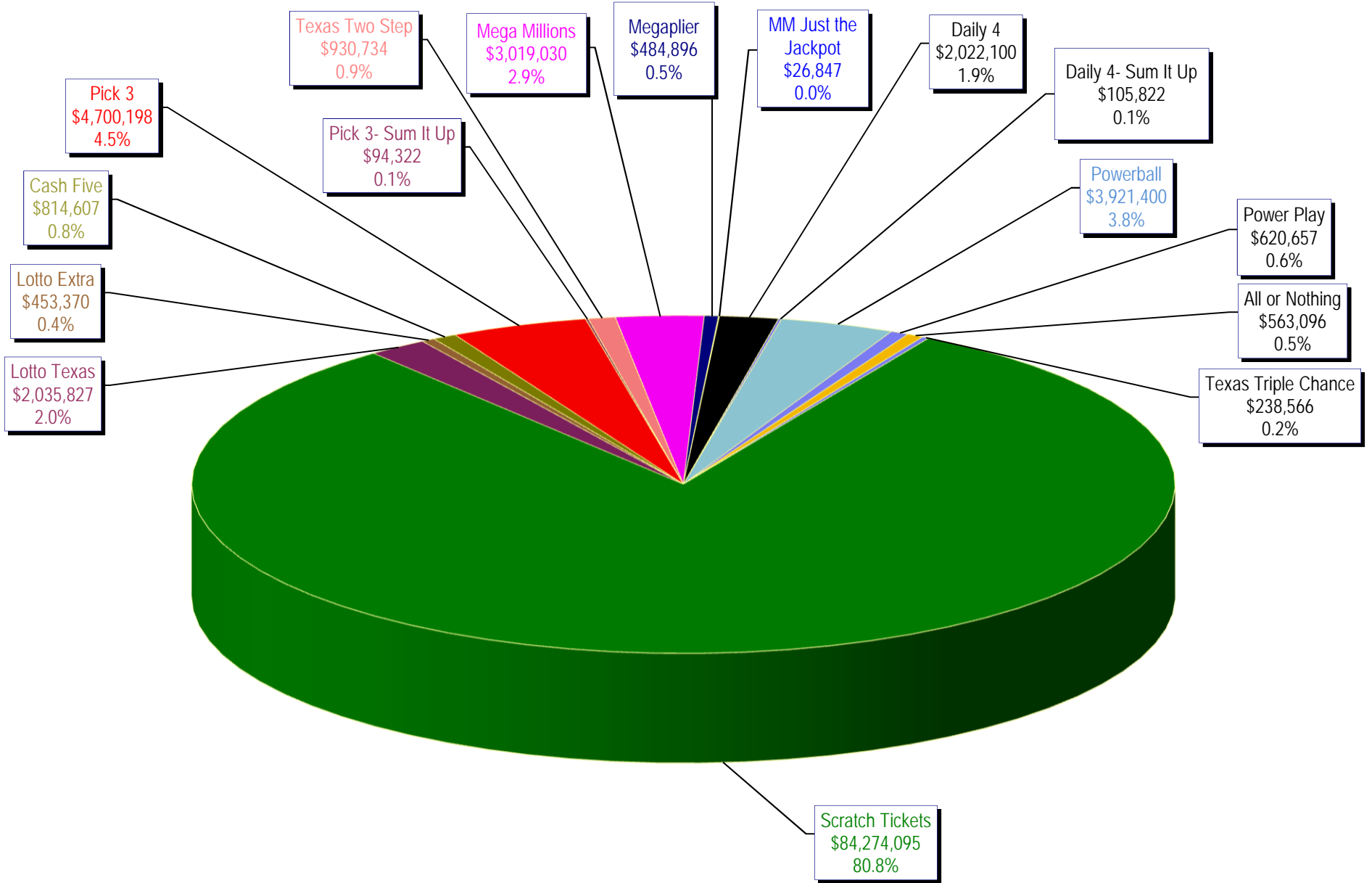
* Before Unclaimed Prizes

**Estimated; depends on # of guaranteed prizes won in Texas

Texas Lottery Commission
Scratch Ticket Sales
For the week ending 1/27/2018
(Unaudited)



Texas Lottery Commission
All Game Sales
 For the week ending 1/27/2018
 (Unaudited)



Texas Lottery Commission - Weekly Sales Summary for FY 2017 (Unaudited)

Week Ended	Scratch Tickets	New Games & Dates	Lotto Texas	Jackpot W	S	Lotto Extra	Pick 3	Pick 3 Sum It Up	Cash Five	Texas Two Step	Jackpot M	TH	Mega Millions	Jackpot T	F	Megaplier	MM Just the Jackpot	Daily 4	Daily 4 Sum It Up	Powerball	Jackpot W	S	Power Play	All or Nothing	Texas Triple Chance	Total	Per Cap.
9/22/2017*	66,786,499	0	1,882,138	7.75	8	407,969	4,127,448	87,462	745,315	757,964	225	250	1,839,333	45	53	546,532		1,675,002	88,460	3,160,562	53	68	527,201	510,296	226,818	83,368,998	2.99
9/9/2017	71,784,232	1894 (\$1.N); 1895 (\$3.N); 1896 (\$5.N); 1897 (\$10.N); 1898 (\$20.N) - 9/05/17	2,030,456	8.25	9	434,404	4,673,693	94,976	810,225	814,157	200	225	2,116,454	61	70	610,101		1,864,288	98,842	3,815,824	83	102	614,504	550,992	250,086	90,563,233	3.25
9/16/2017	72,828,393	0	2,072,973	9.5	10.25	441,815	4,761,239	95,825	803,128	1,009,847	275	400	2,218,181	76	86	632,423		1,969,938	107,496	4,120,318	115	132	647,273	549,860	248,976	92,507,685	3.32
9/23/2017	71,147,147	2000 (\$5.N); 1885 (\$10.N) - 9/18/17	2,083,698	10.75	11.5	444,009	4,652,157	91,944	799,261	958,113	550	200	2,417,135	94	104	676,790		1,999,292	111,399	3,062,637	40	53	505,638	554,074	245,596	89,748,889	3.22
9/30/2017	74,749,619	0	2,123,157	12	12.75	453,258	4,787,745	93,462	817,582	914,011	225	300	1,798,854	15	20	540,169		2,140,708	114,176	3,298,744	66	80	535,906	567,658	251,252	93,186,301	3.34
10/7/2017	78,134,381	1857 (\$1.N); 1871 (\$5.N); 2002 (\$20.N) - 10/02/17	2,158,233	13.5	14	461,982	4,884,513	93,622	837,916	1,157,363	425	575	1,859,000	25	30	555,420		2,086,885	112,246	3,678,352	94	112	585,624	570,242	255,884	97,431,662	3.50
10/14/2017	74,084,207	0	2,161,597	14.75	15.5	460,731	4,743,121	91,735	812,165	832,638	200	225	1,899,412	36	43	564,073		2,060,922	109,910	4,013,728	128	143	621,796	564,614	248,894	93,269,542	3.35
10/21/2017	77,631,892	2003 (\$2.N); 2004 (\$5.N); 1899 (\$50.N) - 10/16/17	2,191,085	16	16.75	466,612	4,682,503	94,156	810,073	1,008,511	300	425	1,677,423	15	20	505,340		2,117,469	116,022	4,422,740	156	173	670,007	563,200	248,496	97,205,528	3.49
10/28/2017	76,385,130	0	2,227,162	17.25	18.25	475,194	4,654,638	92,765	797,066	786,381	200	200	1,737,391	25	30	493,983	22,971	2,144,198	121,467	3,852,082	191	40	595,303	547,396	240,638	95,173,764	3.42
11/4/2017	78,814,323	0	2,333,965	18.75	19.25	494,349	4,926,697	96,245	820,269	887,674	225	275	2,753,000	40	48	421,360	112,668	2,205,239	114,585	3,078,822	52	64	500,061	571,658	248,038	98,378,952	3.53
11/11/2017	78,572,697	2005 (\$1.N); 2006 (\$3.N); 2007 (\$5.N); 2008 (\$10.N) - 11/06/17	2,315,922	19.75	20.5	490,024	4,901,274	94,521	817,975	894,972	400	200	2,652,012	59	71	410,066	62,832	2,069,360	110,879	3,183,712	75	90	507,890	563,738	242,264	97,890,137	3.51
11/18/2017	81,674,704	2085 (\$2.N); 1891 (\$5.N); 2011 (\$10.N) - 11/15/17	2,379,541	21.25	21.75	504,693	4,782,395	93,156	818,168	882,520	225	275	2,820,440	82	95	433,282	53,445	2,053,707	108,480	3,638,718	103	119	564,829	562,306	242,322	101,612,705	3.65
11/25/2017	84,916,870	0	2,353,671	22.5	23.25	504,985	4,590,443	87,556	779,967	1,056,541	400	525	2,980,136	106	119	452,693	45,225	1,908,926	99,032	3,780,406	134	149	582,194	522,808	223,942	104,885,393	3.76
12/2/2017	81,453,005	1862 (\$5.N) - 11/29/17	2,485,060	24	24.75	527,939	4,873,294	92,503	822,515	1,037,952	700	200	3,461,973	132	145	516,938	45,540	2,057,256	111,002	4,218,618	163	177	638,061	556,758	239,766	103,138,180	3.70
12/9/2017	81,251,421	2019 (\$1.N); 2010 (\$5.N); 2014 (\$20.N) - 12/04/17	1,889,914	5	5	412,797	4,711,132	88,700	815,769	867,201	225	275	3,625,922	160	176	538,523	45,915	2,019,801	112,110	4,674,778	193	212	693,130	546,064	235,350	102,528,526	3.68
12/16/2017	83,850,250	1877 (\$5.N) - 12/11/17	1,956,432	5.25	5.5	429,971	4,788,793	92,152	818,587	899,138	400	200	4,204,546	191	208	610,115	45,642	2,099,981	116,295	5,539,284	229	250	809,986	551,440	237,436	107,050,047	3.84
12/23/2017	87,941,872	1879 (\$2.N); 2013 (\$5.N) - 12/18/17	2,124,516	5	5.25	469,230	4,942,394	97,078	837,255	918,506	225	275	5,341,776	223	253	751,656	48,156	2,180,958	120,594	7,471,900	269	300	1,054,970	557,540	245,096	115,103,496	4.13
12/30/2017	88,089,746	0	2,360,842	5.5	5.75	519,750	4,652,815	94,254	811,994	1,034,373	400	550	8,764,544	277	306	1,147,310	65,076	2,060,790	119,090	12,711,198	337	384	1,676,130	555,378	237,816	124,901,105	4.48
1/6/2018	85,627,935	2012 (\$1.N); 2016 (\$3.N); 2020 (\$5.N); 2018 (\$10.N); 2021 (\$20.N) - 1/02/18	2,549,259	6	6.25	569,992	4,638,623	101,857	819,523	806,400	200	225	17,181,579	361	450	2,125,075	99,750	1,971,281	118,574	26,448,160	460	570	3,306,119	536,082	250,152	147,150,359	5.28
1/13/2018	84,788,310	2078 (\$2.N) - 1/10/18	2,040,927	6.5	6.75	448,742	4,766,520	102,572	825,080	1,089,485	300	425	2,922,316	40	45	466,464	29,142	1,999,808	111,260	3,619,230	40	50	576,948	559,134	240,066	104,586,004	3.75
1/20/2018	79,736,335	1874 (\$2.N); 2023 (\$5.N) - 01/15/18	1,966,838	7	7.25	435,886	4,577,006	94,097	795,104	1,022,928	600	200	2,755,698	50	55	444,651	27,351	1,874,998	99,795	3,508,516	62	78	562,582	531,264	231,646	98,664,694	3.54
1/27/2018	84,274,095	0	2,035,827	7.5	7.75	453,370	4,700,198	94,322	814,607	930,734	225	300	3,019,030	63	76	484,896	26,847	2,022,100	105,822	3,921,400	92	112	620,657	563,096	238,566	104,305,566	3.74
weekly change	5.7%		3.5%	4.0%	2.7%	0.2%	2.5%	-9.0%	9.6%	9.1%	-1.8%	7.8%	6.0%	11.8%	10.3%	6.0%	3.0%	5.7%									
	SALES		SALES	SALES	SALES	SALES	SALES	SALES	SALES	SALES	SALES	SALES	SALES	SALES	SALES	SALES	SALES	SALES	SALES	SALES	SALES	SALES	SALES	SALES	SALES	SALES	% of Sales
Calendar Year to date 2017	323,665,210		8,488,243	1,885,891	18,522,240	388,849	3,206,631	3,779,810	25,363,487	3,456,960	179,817	7,789,334	430,613	36,834,974	4,983,239	2,158,674	946,530	442,080,500	100.0%								
Fiscal Year to date 2018	1,700,795,489		46,726,869	10,091,072	101,352,575	2,012,385	17,355,529	19,890,717	79,007,838	13,622,223	730,560	43,564,252	2,375,093	117,576,645	17,121,297	11,833,480	5,187,516	2,189,243,538	100.0%								

*Full week includes 5 days from FY17