



WEEKLY SALES SUMMARY

Unaudited

[Week Ending: 01/28/2012](#)

Texas Lottery Commission
Fiscal Year to Date Sales Comparison
Unaudited

Through the week ending 01/28/12 (22 weeks)

Sales by Game	FY 2010 *	FY 2011 **	FY 2012	\$ Change		% Change	
				FY 2012 to FY 2010	FY 2012 to FY 2011 to	FY 2012 to FY 2010	FY 2012 to FY 2011
Instants	\$ 1,140,630,180	\$ 1,147,599,795	\$ 1,187,224,143	\$ 46,593,963	\$ 39,624,348	4.1%	3.5%
Lotto Texas	112,555,437	71,176,456	72,003,621	-40,551,816	827,165	-36.0%	1.2%
Pick 3	111,091,279	111,950,973	108,803,046	-2,288,234	-3,147,928	-2.1%	-2.8%
Pick 3 Sum It Up	2,201,529	2,276,268	2,219,269	17,740	-56,999	0.8%	-2.5%
Cash Five	28,030,719	26,638,383	26,589,600	-1,441,119	-48,783	-5.1%	-0.2%
Texas Two Step	18,901,001	19,752,259	26,049,623	7,148,622	6,297,364	37.8%	31.9%
Mega Millions	81,001,915	81,900,231	63,328,434	-17,673,481	-18,571,797	-21.8%	-22.7%
Megaplier	18,033,323	16,106,042	13,964,150	-4,069,173	-2,141,892	-22.6%	-13.3%
Daily 4	21,530,019	23,159,359	25,737,982	4,207,963	2,578,623	19.5%	11.1%
Daily 4 Sum It Up	2,060,198	1,819,915	1,899,543	-160,655	79,628	-7.8%	4.4%
Powerball	-	34,776,611	53,612,431	53,612,431	18,835,820	-	-
Power Play	-	8,399,593	11,139,909	11,139,909	2,740,316	-	-
Total	\$ 1,536,035,600	\$ 1,545,555,884	\$ 1,592,571,749	\$ 56,536,149	\$ 47,015,865	3.7%	3.0%

* 2 extra days

** 1 extra day

Texas Lottery Commission
Fiscal Year to Date Cumulative Average Sales Comparison
Unaudited

Through the week ending 01/28/2012 (22 weeks)

Sales by Game	FY 2010	FY 2011	FY 2012
Instant	\$ 7,504,146	\$ 7,599,999	\$ 7,914,828
Lotto Texas	740,496	471,367	480,024
Pick 3	730,864	741,397	725,354
Pick 3 Sum It Up	14,484	15,075	14,795
Cash Five	184,413	176,413	177,264
Texas Two Step	124,349	130,810	173,664
Mega Millions	532,907	542,386	422,190
Megaplier	118,640	106,663	93,094
Daily 4	141,645	153,373	171,587
Daily 4 Sum It Up	13,554	12,052	12,664
Powerball	-	230,309	357,416
Power Play	-	55,626	74,266
Total	\$ 10,105,497	\$ 10,235,469	\$ 10,617,145
	thru 01/30/2010 152 days	thru 01/29/2011 151 days	thru 01/28/2012 150 days

Texas Lottery Commission
Fiscal Year Over Year Change in Sales
Unaudited
FY 2012 Compared to FY 2011

Week	FY 2012 Week Ending	INSTANT TICKETS				ON-LINE GAMES				TOTAL SALES			
		FY 2012	FY 2011	Difference	% change - Cumulative Sales	FY 2012	FY 2011	Difference	% change - Cumulative Sales	FY 2012	FY 2011	Difference	% change - Cumulative Sales
1	9/3/2011**	\$25,147,181	\$31,659,033	(\$6,511,852)	-20.6%	\$9,704,561	\$11,430,717	(\$1,726,156)	-15.1%	\$34,851,742	\$43,089,750	(\$8,238,008)	-19.1%
2	9/10/2011	\$50,591,068	\$48,912,598	\$1,678,470	3.4%	\$17,681,853	\$16,398,160	\$1,283,693	7.8%	\$68,272,921	\$65,310,758	\$2,962,163	4.5%
3	9/17/2011	\$49,835,063	\$48,988,241	\$846,822	1.7%	\$16,842,326	\$17,166,827	(\$324,501)	-1.9%	\$66,677,389	\$66,155,068	\$522,321	0.8%
4	9/24/2011	\$49,777,138	\$48,471,310	\$1,305,828	2.7%	\$17,504,800	\$15,623,813	\$1,880,987	12.0%	\$67,281,938	\$64,095,123	\$3,186,815	5.0%
5	10/1/2011	\$51,040,274	\$50,145,138	\$895,136	1.8%	\$18,653,100	\$16,453,939	\$2,199,161	13.4%	\$69,693,374	\$66,599,077	\$3,094,297	4.6%
6	10/8/2011	\$53,715,157	\$50,918,591	\$2,796,566	5.5%	\$17,225,680	\$16,974,963	\$250,717	1.5%	\$70,940,837	\$67,893,554	\$3,047,283	4.5%
7	10/15/2011	\$51,942,121	\$49,096,011	\$2,846,110	5.8%	\$17,854,980	\$16,661,904	\$1,193,077	7.2%	\$69,797,101	\$65,757,915	\$4,039,187	6.1%
8	10/22/2011	\$52,837,769	\$50,158,946	\$2,678,823	5.3%	\$19,558,519	\$17,374,460	\$2,184,060	12.6%	\$72,396,288	\$67,533,406	\$4,862,883	7.2%
9	10/29/2011	\$52,206,644	\$49,775,287	\$2,431,357	4.9%	\$21,504,565	\$18,402,209	\$3,102,356	16.9%	\$73,711,209	\$68,177,496	\$5,533,713	8.1%
10	11/5/2011	\$56,265,310	\$53,337,848	\$2,927,462	5.5%	\$20,870,086	\$17,321,908	\$3,548,179	20.5%	\$77,135,396	\$70,659,756	\$6,475,641	9.2%
11	11/12/2011	\$55,682,645	\$52,285,479	\$3,397,166	6.5%	\$17,862,404	\$16,388,690	\$1,473,714	9.0%	\$73,545,049	\$68,674,169	\$4,870,880	7.1%
12	11/19/2011	\$54,978,079	\$52,424,036	\$2,554,043	4.9%	\$17,879,985	\$16,138,022	\$1,741,963	10.8%	\$72,858,064	\$68,562,058	\$4,296,006	6.3%
13	11/26/2011	\$53,942,448	\$51,262,518	\$2,679,930	5.2%	\$16,877,145	\$15,967,075	\$910,070	5.7%	\$70,819,593	\$67,229,593	\$3,590,000	5.3%
14	12/3/2011	\$57,153,469	\$56,385,259	\$768,210	1.4%	\$18,298,636	\$17,553,175	\$745,461	4.2%	\$75,452,105	\$73,938,434	\$1,513,671	2.0%
15	12/10/2011	\$55,318,284	\$56,540,048	(\$1,221,764)	-2.2%	\$19,033,326	\$17,703,352	\$1,329,975	7.5%	\$74,351,610	\$74,243,400	\$108,211	0.1%
16	12/17/2011	\$58,612,629	\$57,699,991	\$912,638	1.6%	\$20,045,279	\$18,465,282	\$1,579,997	8.6%	\$78,657,908	\$76,165,273	\$2,492,635	3.3%
17	12/24/2011	\$60,628,256	\$59,800,480	\$827,776	1.4%	\$22,572,986	\$19,635,771	\$2,937,215	15.0%	\$83,201,242	\$79,436,251	\$3,764,991	4.7%
18	12/31/2011	\$63,065,007	\$61,423,121	\$1,641,886	2.7%	\$19,948,521	\$26,122,257	(\$6,173,736)	-23.6%	\$83,013,528	\$87,545,378	(\$4,531,850)	-5.2%
19	1/7/2012	\$60,479,896	\$60,976,653	(\$496,757)	-0.8%	\$17,331,888	\$33,521,570	(\$16,189,682)	-48.3%	\$77,811,784	\$94,498,223	(\$16,686,439)	-17.7%
20	1/14/2012	\$57,689,526	\$50,099,433	\$7,590,093	15.2%	\$17,568,732	\$17,114,637	\$454,096	2.7%	\$75,258,258	\$67,214,070	\$8,044,189	12.0%
21	1/21/2012	\$58,704,854	\$53,143,646	\$5,561,208	10.5%	\$19,886,540	\$18,091,208	\$1,795,332	9.9%	\$78,591,394	\$71,234,854	\$7,356,540	10.3%
22	1/28/2012	\$57,611,325	\$54,096,128	\$3,515,197	6.5%	\$20,641,697	\$17,446,156	\$3,195,542	18.3%	\$78,253,022	\$71,542,284	\$6,710,739	9.4%
23	2/4/2012		\$53,433,592				\$17,388,581				\$70,822,173		
24	2/11/2012		\$60,277,094				\$18,233,038				\$78,510,132		
25	2/18/2012		\$61,536,763				\$19,387,518				\$80,924,281		
26	2/25/2012		\$59,046,203				\$20,054,404				\$79,100,607		
27	3/3/2012		\$60,537,060				\$19,478,807				\$80,015,867		
28	3/10/2012		\$59,997,361				\$19,601,658				\$79,599,019		
29	3/17/2012		\$57,835,554				\$21,189,563				\$79,025,117		
30	3/24/2012		\$57,911,940				\$29,729,651				\$87,641,591		
31	3/31/2012		\$60,407,139				\$19,519,264				\$79,926,403		
32	4/7/2012		\$60,704,285				\$19,455,317				\$80,159,602		
33	4/14/2012		\$57,663,398				\$17,866,867				\$75,530,265		
34	4/21/2012		\$56,740,216				\$17,429,326				\$74,169,542		
35	4/28/2012		\$58,042,011				\$17,104,548				\$75,146,559		
36	5/5/2012		\$66,509,159				\$17,744,833				\$84,253,992		
37	5/12/2012		\$53,769,716				\$17,783,942				\$71,553,658		
38	5/19/2012		\$53,704,228				\$18,623,882				\$72,328,110		
39	5/26/2012		\$52,310,134				\$19,115,921				\$71,426,055		
40	6/2/2012		\$53,256,725				\$18,462,603				\$71,719,328		
41	6/9/2012		\$54,293,614				\$17,213,019				\$71,506,633		
42	6/16/2012		\$52,688,230				\$17,534,413				\$70,222,643		

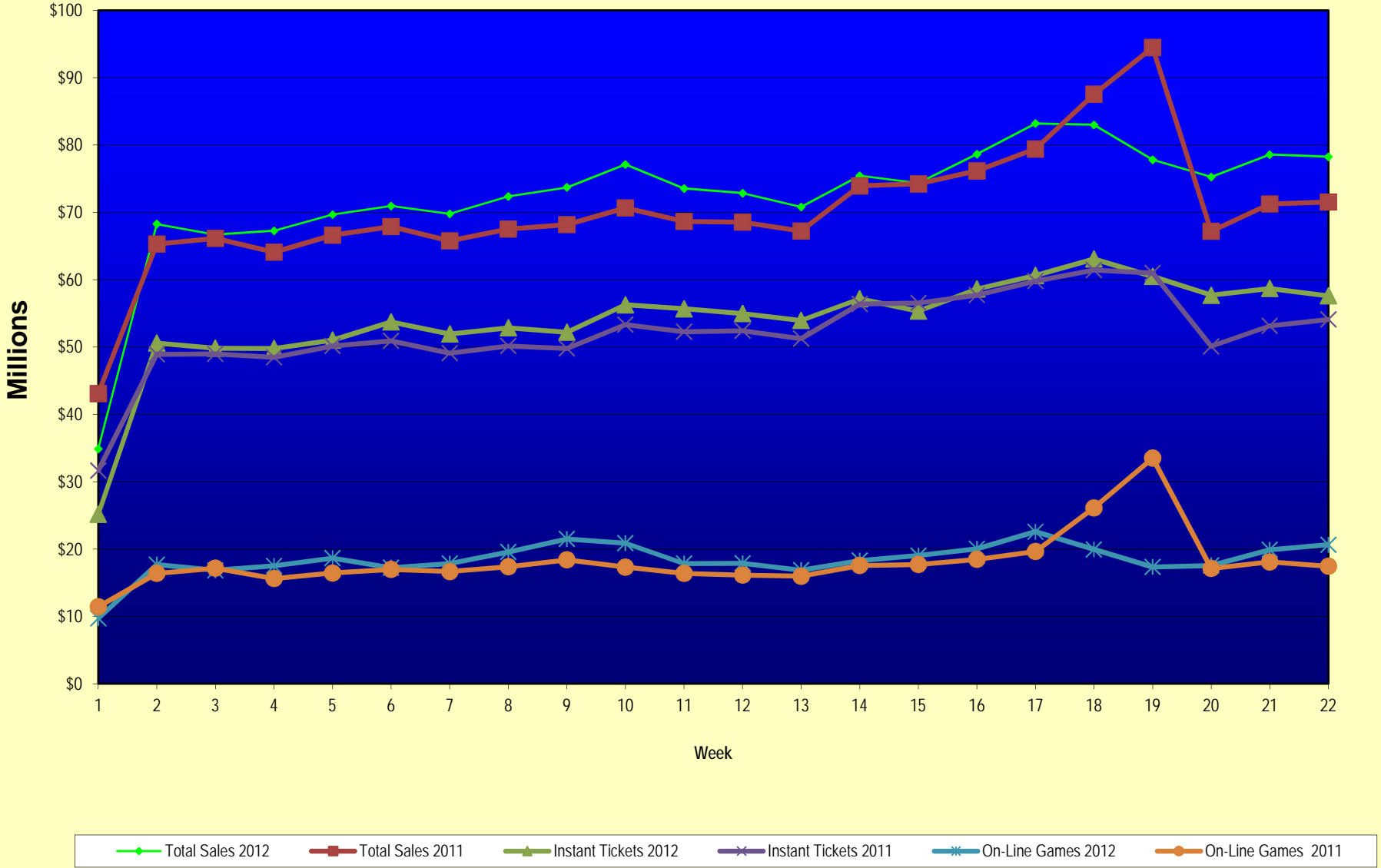
Note: Week 1 is not a full week of sales as this report is prepared on a Fiscal Year basis.

Texas Lottery Commission
Fiscal Year Over Year Change in Sales
Unaudited
FY 2012 Compared to FY 2011

Week	FY 2012 Week Ending	INSTANT TICKETS				ON-LINE GAMES				TOTAL SALES			
		FY 2012	FY 2011	Difference	% change - Cumulative Sales	FY 2012	FY 2011	Difference	% change - Cumulative Sales	FY 2012	FY 2011	Difference	% change - Cumulative Sales
43	6/23/2012		\$53,174,595				\$17,086,937				\$70,261,532		
44	6/30/2012		\$53,687,509				\$18,406,785				\$72,094,294		
45	7/7/2012		\$53,054,685				\$16,211,989				\$69,266,674		
46	7/14/2012		\$51,161,290				\$16,945,733				\$68,107,023		
47	7/21/2012		\$50,807,750				\$17,362,213				\$68,169,963		
48	7/28/2012		\$51,277,179				\$18,870,764				\$70,147,943		
49	8/4/2012		\$53,320,489				\$20,922,034				\$74,242,523		
50	8/11/2012		\$50,914,022				\$19,467,124				\$70,381,146		
51	8/18/2012		\$49,905,898				\$17,419,045				\$67,324,943		
52	8/25/2012		\$49,424,242				\$16,837,474				\$66,261,716		
	8/31/2012		\$27,274,804				\$8,600,118				\$35,874,922		
Total thru Current Week		\$1,187,224,143	\$1,147,599,795	\$39,624,348	3.5%	\$405,347,606	\$397,956,089	\$7,391,517	1.9%	\$1,592,571,749	\$1,545,555,884	\$47,015,865	3.0%
Fiscal Year Total		\$1,187,224,143	\$2,842,266,680			\$405,347,606	\$969,003,455			\$1,592,571,749	\$3,811,270,135		

** FY 2011 includes 4 days; FY 2012 includes 3 days

Texas Lottery Commission Fiscal Year Over Year Change in Sales



Note: Week 1 is not a full week of sales as this report is prepared on a Fiscal Year basis.

Texas Lottery Commission
Instant Tickets by Price Point
Sales, Prize Expense, Sales Contribution and Payout Percentage With Year Over Year Changes
Unaudited

Fiscal Year	Price Point	# of Active Games	FY Sales	% of Instant Ticket Sales	Year over Year Change in Sales	FY Prize Expense	Year over Year Change in Prize Expense	FY Sales Contribution	Year over Year Change in Contribution	Average Prize Payout %	Year over Year Change in Payout %
2011	\$1.00	27	85,942,308	7.5%		52,934,634		33,007,674		61.6%	2.5%
thru	\$2.00	27	163,797,062	14.3%		107,465,521		56,331,541		65.6%	0.7%
1/29/2011	\$3.00	17	140,215,670	12.2%		92,006,059		48,209,611		65.6%	0.0%
	\$5.00	36	366,292,765	31.9%		249,342,751		116,950,014		68.1%	0.1%
	\$7.00	7	50,933,540	4.4%		34,623,689		16,309,851		68.0%	0.0%
	\$10.00	13	154,436,730	13.5%		109,291,685		45,145,045		70.8%	1.2%
	\$20.00	5	146,447,420	12.8%		108,656,070		37,791,350		74.2%	1.4%
	\$50.00	2	39,534,300	3.4%		30,694,473		8,839,827		77.6%	4.2%
Total		134	\$1,147,599,795			\$785,014,881		\$362,584,914		68.4%	1.0%
2012	\$1.00	28	90,884,195	7.7%		55,741,338		35,142,857		61.3%	1.0%
thru	\$2.00	28	164,038,370	13.8%		106,645,656		57,392,714		65.0%	-0.8%
1/28/2012	\$3.00	15	144,954,045	12.2%		95,054,944		49,899,101		65.6%	0.0%
	\$5.00	36	378,185,540	31.9%		257,389,201		120,796,339		68.1%	0.2%
	\$7.00	4	18,211,613	1.5%		12,383,778		5,827,835		68.0%	0.0%
	\$10.00	15	188,208,980	15.9%		132,506,960		55,702,020		70.4%	-0.9%
	\$20.00	5	161,026,100	13.6%		120,109,308		40,916,792		74.6%	-0.1%
	\$50.00	2	41,715,300	3.5%		32,398,068		9,317,232		77.7%	0.0%
Total		133	\$1,187,224,143			\$812,229,254		\$374,994,889		68.4%	-0.1%
Variance	\$1.00	1	4,941,887		5.8%	2,806,704	5.3%	2,135,183	6.5%	-0.26%	
2012 to	\$2.00	1	241,308		0.1%	-819,865	-0.8%	1,061,173	1.9%	-0.60%	
2011	\$3.00	-2	4,738,375		3.4%	3,048,885	3.3%	1,689,490	3.5%	-0.04%	
	\$5.00	0	11,892,775		3.2%	8,046,450	3.2%	3,846,325	3.3%	-0.01%	
	\$7.00	-3	-32,721,927		-64.2%	-22,239,910	-64.2%	-10,482,017	-64.3%	0.02%	
	\$10.00	2	33,772,250		21.9%	23,215,276	21.2%	10,556,974	23.4%	-0.36%	
	\$20.00	0	14,578,680		10.0%	11,453,238	10.5%	3,125,442	8.3%	0.40%	
	\$50.00	0	2,181,000		5.5%	1,703,596	5.6%	477,404	5.4%	0.02%	
Total		-1	\$39,624,348		3.5%	\$27,214,373	3.5%	\$12,409,975	3.4%	0.00%	

Notes - Instant Ticket Variances

Texas Lottery Commission
Instant Tickets by Price Point
Sales, Prize Expense, Sales Contribution and Payout Percentage With Year Over Year Changes
 Unaudited

			FY 2012		FY 2011	Difference
Sales	\$1 - \$7		\$796,273,763		\$807,181,345	-\$10,907,582
Prize Exp.	\$1 - \$7		\$527,214,917		\$536,372,654	-\$9,157,737
Sales Cont.	\$1 - \$7		\$269,058,846		\$270,808,691	-\$1,749,845
Prize Exp. %	\$1 - \$7		66.2%		66.5%	-0.2%
			FY 2012		FY 2011	Difference
Sales	\$10 - \$50		\$390,950,380		\$340,418,450	\$50,531,930
Prize Exp.	\$10 - \$50		\$285,014,337		\$248,642,227	\$36,372,110
Sales Cont.	\$10 - \$50		\$105,936,043		\$91,776,223	\$14,159,820
Prize Exp. %	\$10 - \$50		72.9%		73.0%	-0.1%
			FY 2012		FY 2011	Difference
Sales	Instant		\$1,187,224,143		\$1,147,599,795	\$39,624,348
Prize Exp.	Instant		\$812,229,254		\$785,014,881	\$27,214,373
Sales Cont.	Instant		\$374,994,889		\$362,584,914	\$12,409,975
Prize Exp. %	Instant		68.4%		68.4%	0.0%

			FY 2012		FY 2011	Difference
Sales	\$1 - \$10		\$984,482,743		\$961,618,075	\$22,864,668
Prize Exp.	\$1 - \$10		\$659,721,878		\$645,664,338	\$14,057,539
Sales Cont.	\$1 - \$10		\$324,760,865		\$315,953,737	\$8,807,129
Prize Exp. %	\$1 - \$10		67.0%		67.1%	-0.1%
			FY 2012		FY 2011	Difference
Sales	\$20 - \$50		\$202,741,400		\$185,981,720	\$16,759,680
Prize Exp.	\$20 - \$50		\$152,507,377		\$139,350,543	\$13,156,834
Sales Cont.	\$20 - \$50		\$50,234,023		\$46,631,177	\$3,602,846
Prize Exp. %	\$20 - \$50		75.2%		74.9%	0.3%
			FY 2012		FY 2011	Difference
Sales	Instant		\$1,187,224,143		\$1,147,599,795	\$39,624,348
Prize Exp.	Instant		\$812,229,254		\$785,014,881	\$27,214,373
Sales Cont.	Instant		\$374,994,889		\$362,584,914	\$12,409,975
Prize Exp. %	Instant		68.4%		68.4%	0.0%

Texas Lottery Commission
Weekly Sales Summary
& Comparison to Previous Week
 Unaudited

	Week Ending 01/28/2012	% of Sales	Week Ending 01/21/2012	% of Sales	\$ change	% change
	<u>THIS WEEK</u>		<u>LAST WEEK</u>			
Total Sales	<u>\$78,253,022</u>		<u>\$78,591,394</u>		<u>-\$338,372</u>	-0.43%
Instant Tickets	<u>\$57,611,325</u>	73.6%	<u>\$58,704,854</u>	74.7%	<u>-\$1,093,529</u>	-1.86%
Lotto	\$3,295,592	4.2%	\$3,310,397	4.2%	-\$14,805	-0.45%
Pick 3	\$4,996,799	6.4%	\$5,033,947	6.4%	-\$37,149	-0.74%
Pick 3 Sum It Up	\$103,779	0.1%	\$104,874	0.1%	-\$1,096	-1.04%
Cash Five	\$1,241,568	1.6%	\$1,252,621	1.6%	-\$11,053	-0.88%
Texas Two Step	\$1,940,577	2.5%	\$1,422,729	1.8%	\$517,848	36.40%
Mega Millions	\$2,426,609	3.1%	\$2,696,266	3.4%	-\$269,657	-10.00%
Megaplier	\$544,967	0.7%	\$594,142	0.8%	-\$49,175	-8.28%
Daily 4	\$1,197,885	1.5%	\$1,204,955	1.5%	-\$7,071	-0.59%
Daily 4 Sum It Up	\$85,833	0.1%	\$88,136	0.1%	-\$2,304	-2.61%
Powerball	\$4,311,550	5.5%	\$3,611,989	4.6%	\$699,562	19.37%
Power Play	\$496,540	0.6%	\$566,485	0.7%	-\$69,945	-12.35%
Total Online Sales	<u>\$20,641,697</u>		<u>\$19,886,540</u>		<u>\$755,157</u>	3.80%

Totals may not sum due to rounding.

Texas Lottery Commission
Weekly Sales Summary
Unaudited

INSTANT TICKETS
TOP TEN SELLING GAMES

For the Week Ending : 01/28/2012

Rank	Price Point	Game	Sales (Millions)
1	\$ 5	CHOCOLATE	\$ 4.126
2	\$ 10	BIG MONEY	\$ 3.718
3	\$ 20	\$500,000,000 FRENZY	\$ 3.237
4	\$ 50	CASINO ACTION	\$ 2.721
5	\$ 5	MONEY MULTIPLIER	\$ 2.140
6	\$ 3	BONUS CASHWORD	\$ 2.082
7	\$ 20	\$500,000,000 BLOCKBUSTER	\$ 2.022
8	\$ 3	LOTERIA	\$ 1.877
9	\$ 5	GROOVY CASH	\$ 1.847
10	\$ 2	BREAK THE BANK	\$ 1.495

Texas Lottery Commission
Prize Payout Tracking Report
Unaudited

Through Week Ending 01/28/2012

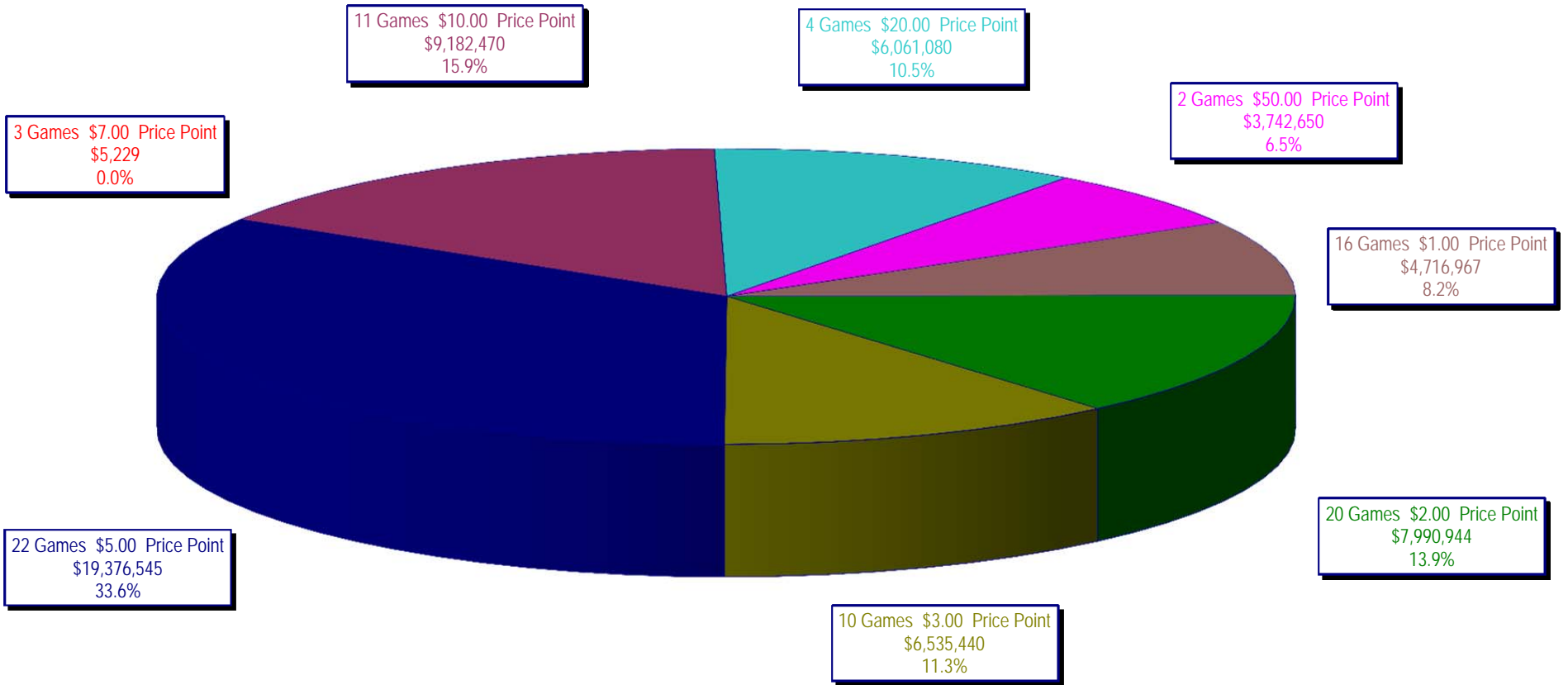
On-Line Sales

		FY Sales Through Week Ending 1/28/2012		FY Prize Expense Through Week Ending 1/28/2012	Actual* Prize Payout	Base Payout (Prize Pool)
Lotto	\$	72,003,621	\$	43,532,267	60.46%	50.00%
Pick 3		108,803,046		49,806,680	45.78%	50.00%
Pick 3 Sum It Up		2,219,269		1,053,984	47.49%	50.00%
Cash Five		26,589,600		13,798,921	51.90%	50.00%
Texas Two Step		26,049,623		13,019,210	49.98%	50.00%
Mega Millions		63,328,434		31,207,350	49.28%	50.00%**
Megaplier		13,964,150		7,250,859	51.92%	N/A
Daily 4		25,737,982		11,857,725	46.07%	50.00%
Daily 4 Sum It Up		1,899,543		775,740	40.84%	50.00%
Powerball		53,612,431		26,154,785	48.78%	50.00%**
Power Play		11,139,909		5,758,647	51.69%	N/A
Totals	\$	405,347,606	\$	204,216,166	50.38%	

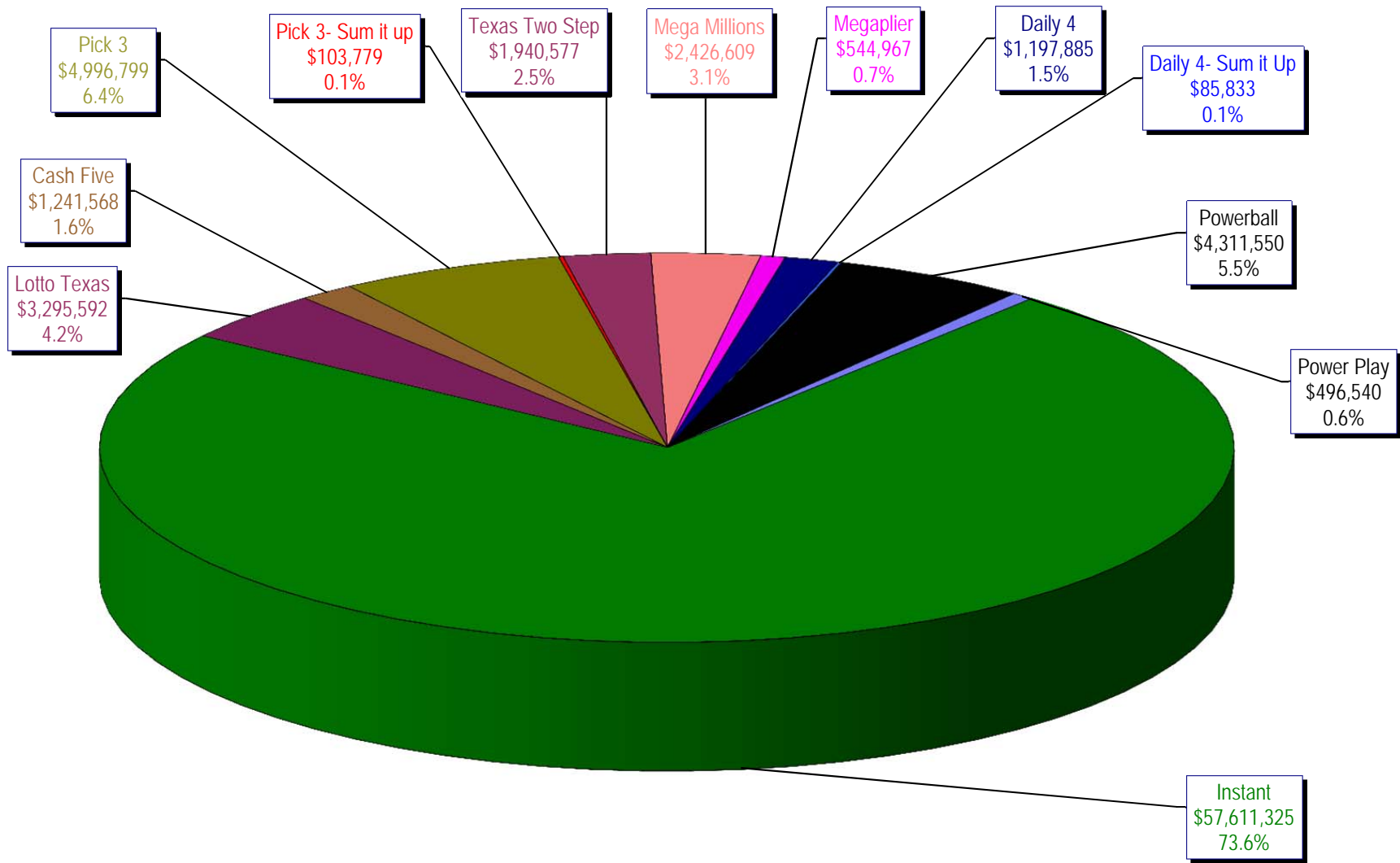
* Before Unclaimed Prizes

** Estimated; depends on # of guaranteed prizes won in Texas

Texas Lottery Commission
Instant Ticket Sales
For the Week Ending 01/28/12
(Unaudited)



**Texas Lottery Commission
All Game Sales
For the Week Ending 01/28/12
(Unaudited)**



Texas Lottery Commission - Weekly Sales Summary for FY 2012 (Unaudited)

Week Ended	Instant Games	New Games & Dates	Lotto Texas	Jackpot W	Jackpot S	Pick 3	Pick 3 Sum It Up	Cash Five	Texas Two Step	Jackpot M	Jackpot TH	Mega Millions	Jackpot T	Jackpot F	Megaplier	Daily 4	Daily 4 Sum It Up	Powerball	Jackpot W	Jackpot S	Power Play	Total	Per Cap.
9/3/2011	52,421,985	1340 (\$1,N); 1310 (\$2, N) - 08/29/11	3,710,974	23	24	5,228,940	100,997	1,239,134	989,988	225	300	2,248,664	21	29	539,246	1,221,178	93,318	2,401,555	75	91	530,686	70,726,664	2.81
9/10/2011	50,591,068	1360 (\$3, N) - 09/05/11	3,329,350	25	4	5,103,026	99,259	1,198,563	935,771	450	200	2,387,766	37	44	557,225	1,180,505	88,443	2,295,315	107	20	506,631	68,272,921	2.71
9/17/2011	49,835,063	0	3,031,798	5	6	4,953,079	100,990	1,210,562	961,592	225	300	2,801,526	54	65	626,459	1,125,230	83,532	1,560,522	25	20	387,037	66,677,389	2.64
9/24/2011	49,777,138	1362(\$1, N); 1363(\$5,N); 1364(\$5,N) - 09/19/11	3,083,973	7	8	4,819,453	97,999	1,200,444	1,283,472	450	600	3,206,022	75	86	692,909	1,092,294	82,198	1,561,655	25	30	384,383	67,281,938	2.67
10/1/2011	51,040,274	1365(\$2,N) - 09/26/11	3,196,730	9	10	4,846,896	97,026	1,215,715	1,146,613	800	200	4,033,330	96	113	830,660	1,096,271	83,993	1,693,809	37	47	412,058	69,693,374	2.76
10/8/2011	53,715,157	1366(\$1,N) - 10/03/11	3,231,892	11	12	5,064,771	102,919	1,252,733	1,004,251	225	300	2,176,684	12	14	527,777	1,188,636	92,825	2,103,034	58	71	480,159	70,940,837	2.81
10/15/2011	51,942,121	1367 (\$7, N) - 10/10/11	3,230,925	13	14	4,776,985	99,008	1,214,385	1,337,436	450	625	2,260,036	22	30	542,787	1,132,415	84,772	2,613,215	86	105	563,017	69,797,101	2.77
10/22/2011	52,837,769	1369 (\$1, N); 1370 (\$5, N) - 10/17/11	3,250,317	15	16	4,784,201	98,306	1,202,768	1,887,302	825	1,050	2,386,255	39	48	561,705	1,130,353	83,722	3,477,867	124	148	695,724	72,396,288	2.87
10/29/2011	52,206,644	1371 (\$2, N) - 10/24/11	3,302,201	17	18	4,685,786	95,887	1,186,987	2,055,399	1,300	1,550	2,592,752	57	67	596,631	1,107,441	82,921	4,895,300	173	203	903,261	73,711,209	2.92
11/5/2011	56,265,310	1373 (\$10, N) - 10/31/11	3,570,825	19	20	5,165,835	105,793	1,240,514	910,036	200	200	2,497,308	78	12	583,481	1,222,706	92,619	4,617,172	245	20	863,799	77,135,396	3.06
11/12/2011	55,682,645	1375 (\$3, N); 1374 (\$1, N) - 11/07/11	3,673,137	21	22	5,298,645	109,575	1,268,630	961,349	225	200	2,362,698	15	22	552,133	1,235,272	92,025	1,861,697	25	35	447,243	73,545,049	2.92
11/19/2011	54,978,079	1376(\$2, N); 1377 (\$5, N) - 11/14/11	3,575,231	23	24	5,216,095	106,956	1,246,366	1,059,355	225	325	2,300,050	30	40	550,825	1,224,365	89,978	2,033,222	46	60	477,542	72,858,064	2.89
11/26/2011	53,942,448	1372 (\$5, N) - 11/21/11	3,499,908	25	26	4,943,420	100,352	1,179,174	998,175	500	200	2,377,399	47	55	555,760	1,215,090	90,416	1,527,546	20	25	389,905	70,819,593	2.81
12/3/2011	57,153,469	0	3,744,456	27	28	5,267,602	108,544	1,264,649	938,225	225	200	2,830,996	64	75	636,924	1,278,857	95,379	1,708,763	31	40	424,242	75,452,105	2.99
12/10/2011	55,318,284	1378 (\$1, N); 1322 (\$5, N) - 12/5/11; 1389 (\$1, N) - 12/6/11	3,666,072	29	30	5,168,509	106,265	1,243,957	1,030,979	225	325	3,462,326	87	100	736,281	1,235,834	89,131	1,850,570	52	67	443,403	74,351,610	2.95
12/17/2011	58,612,629	1383 (\$3,N) - 12/12/11	2,963,151	4	5	5,096,413	103,606	1,257,263	1,339,991	475	650	4,412,520	116	135	882,759	1,240,640	89,229	2,163,468	78	91	496,239	78,657,908	3.12
12/24/2011	60,628,256	1379 (\$1, N); 1317 (\$2, N); 1380 (\$5, N) - 12/19/11	3,265,301	6	7	5,257,800	105,568	1,269,335	943,509	200	225	5,729,832	152	173	1,095,360	1,263,815	88,757	2,933,837	104	125	619,872	83,201,242	3.30
12/31/2011	63,065,007	0	3,368,593	8	9	5,211,663	107,395	1,275,257	1,200,536	325	450	4,358,985	206	12	878,865	1,244,035	88,079	1,788,226	20	25	426,888	83,013,528	3.29
1/7/2012	60,479,896	1381 (\$5,N); 1277 (\$50,N) - 1/3/12; 1429 (\$5,N); 1401 (\$10, N) - 1/4/12	3,193,532	10	11	5,246,112	108,060	1,281,653	1,135,472	625	200	2,298,815	15	25	550,191	1,240,736	90,116	1,763,484	30	44	423,718	77,811,784	3.09
1/14/2012	57,689,526	1382 (\$2,N); 1232 (\$10, N) - 1/9/12	3,259,338	12	13	5,061,130	103,687	1,270,289	1,059,875	225	350	2,542,675	33	42	587,013	1,229,792	87,637	1,921,683	54	66	445,614	75,258,258	2.98
1/21/2012	58,704,854	1384 (\$1,N) 1385 (\$5,N) - 1/16/12	3,310,397	14	15	5,033,947	104,874	1,252,621	1,422,729	500	650	2,696,266	50	60	594,142	1,204,955	88,136	3,611,989	80	100	566,485	78,591,394	3.12
1/28/2012	57,611,325	0	3,295,592	16	17	4,996,799	103,779	1,241,568	1,940,577	875	1,100	2,426,609	71	12	544,967	1,197,885	85,833	4,311,550	120	146	496,540	78,253,022	3.10
weekly change	-1.9%		-0.4%			-0.7%	-1.0%	-0.9%	36.4%			-10.0%			-8.3%	-0.6%	-2.6%	19.4%			-12.3%	-0.4%	
SALES			SALES			SALES	SALES	SALES	SALES			SALES			SALES	SALES	SALES	SALES			SALES	SALES	% of Sales
Startup to date	43,062,582,345		10,980,009,680			4,236,163,367	25,522,601	2,347,498,261	603,884,090			1,548,760,159			354,099,321	226,740,671	24,868,982	210,004,315			47,403,254	63,875,671,016	100.0%
Calendar Year to date	234,485,601		13,058,859			20,337,987	420,399	5,046,131	5,558,653			9,964,365			2,276,313	4,873,368	351,721	11,608,706			1,932,357	309,914,458	100.0%
Fiscal Year to date 2012	1,187,224,143		72,003,621			108,803,046	2,219,269	26,589,600	26,049,623			63,328,434			13,964,150	25,737,982	1,899,543	53,612,431			11,139,909	1,592,571,749	100.0%