



WEEKLY SALES SUMMARY

Unaudited

[Week Ending: 01/30/2010](#)

Texas Lottery Commission
Fiscal Year to Date Sales Comparison
Unaudited

Through the week ending 01/30/2010 (22 weeks)

Sales by Game				\$ Change		% Change	
	FY 2008 *	FY 2009 **	FY 2010	FY 2010 to FY 2008	FY 2010 to FY 2009 to	FY 2010 to FY 2008	FY 2010 to FY 2009
Instant	\$ 1,188,482,863	\$ 1,140,569,029	\$ 1,140,630,180	\$ -47,852,683	\$ 61,151	-4.0%	0.0%
Lotto Texas	90,038,029	76,882,609	112,555,437	22,517,408	35,672,828	25.0%	46.4%
Pick 3	119,991,015	117,385,039	111,091,279	-8,899,736	-6,293,760	-7.4%	-5.4%
Pick 3 Sum It Up	2,238,004	2,482,753	2,201,529	-36,475	-281,224	-1.6%	-11.3%
Cash 5	32,776,907	29,796,687	28,030,719	-4,746,188	-1,765,968	-14.5%	-5.9%
Texas Two Step	17,235,170	19,287,191	18,901,001	1,665,831	-386,190	9.7%	-2.0%
Mega Millions	62,376,173	70,433,816	81,001,915	18,625,742	10,568,100	29.9%	15.0%
Megaplier	15,493,717	16,795,928	18,033,323	2,539,606	1,237,395	16.4%	7.4%
Daily 4	17,434,535	17,903,594	21,530,019	4,095,485	3,626,426	23.5%	20.3%
Daily 4 Sum It Up	4,356,808	2,269,567	2,060,198	-2,296,610	-209,369	-52.7%	-9.2%
Total	\$ 1,550,423,220	\$ 1,493,806,211	\$ 1,536,035,600	\$ -14,387,620	\$ 42,229,389	-0.9%	2.8%

* 3 extra days ** 1 extra day

Texas Lottery Commission
Fiscal Year to Date Cumulative Average Sales Comparison
Unaudited

Through the week ending 01/30/2010 (22 weeks)

Sales by Game	FY 2008	FY 2009	FY 2010
Instant	\$ 7,667,631	\$ 7,454,700	\$ 7,504,146
Lotto Texas	580,891	502,501	740,496
Pick 3	774,136	767,222	730,864
Pick 3 Sum It Up	14,439	16,227	14,484
Cash 5	211,464	194,750	184,413
Texas Two Step	111,195	126,060	124,349
Mega Millions	402,427	460,352	532,907
Megaplier	99,959	109,777	118,640
Daily 4	112,481	117,017	141,645
Daily 4 Sum It Up	28,108	14,834	13,554
Total	\$ 10,002,730	\$ 9,763,439	\$ 10,105,497
	thru 02/02/2008 155 days	thru 01/31/2009 153 days	thru 01/30/2010 152 days

Texas Lottery Commission
Fiscal Year Over Year Change in Sales
Unaudited
FY 2010 Compared to FY 2009

		INSTANT TICKETS				ON-LINE GAMES				TOTAL SALES			
Week	FY 2010 Week Ending	FY 2010	FY 2009	Difference	% change - Cumulative Sales	FY 2010	FY 2009	Difference	% change - Cumulative Sales	FY 2010	FY 2009	Difference	% change - Cumulative Sales
1	9/5/2009**	\$40,148,241	\$44,890,104	(\$4,741,863)	-10.6%	\$15,859,194	\$14,722,011	\$1,137,184	7.7%	\$56,007,435	\$59,612,115	(\$3,604,680)	-6.0%
2	9/12/2009	\$49,896,100	\$46,309,551	\$3,586,549	7.7%	\$18,206,315	\$13,704,860	\$4,501,455	32.8%	\$68,102,415	\$60,014,411	\$8,088,004	13.5%
3	9/19/2009	\$50,971,937	\$42,923,171	\$8,048,766	18.8%	\$18,859,622	\$12,291,263	\$6,568,359	53.4%	\$69,831,559	\$55,214,434	\$14,617,125	26.5%
4	9/26/2009	\$49,975,243	\$47,042,801	\$2,932,442	6.2%	\$19,345,435	\$14,222,339	\$5,123,096	36.0%	\$69,320,678	\$61,265,140	\$8,055,538	13.1%
5	10/3/2009	\$52,283,569	\$50,747,162	\$1,536,407	3.0%	\$20,991,695	\$15,784,472	\$5,207,223	33.0%	\$73,275,264	\$66,531,634	\$6,743,630	10.1%
6	10/10/2009	\$52,238,261	\$49,763,789	\$2,474,472	5.0%	\$21,547,439	\$15,622,498	\$5,924,941	37.9%	\$73,785,700	\$65,386,287	\$8,399,413	12.8%
7	10/17/2009	\$50,806,599	\$49,299,053	\$1,507,546	3.1%	\$23,114,594	\$15,167,940	\$7,946,654	52.4%	\$73,921,193	\$64,466,993	\$9,454,200	14.7%
8	10/24/2009	\$50,731,592	\$49,977,581	\$754,011	1.5%	\$17,274,411	\$14,525,843	\$2,748,568	18.9%	\$68,006,003	\$64,503,424	\$3,502,579	5.4%
9	10/31/2009	\$50,684,853	\$50,346,542	\$338,311	0.7%	\$15,710,720	\$14,838,845	\$871,876	5.9%	\$66,395,573	\$65,185,387	\$1,210,187	1.9%
10	11/7/2009	\$54,633,928	\$54,860,087	(\$226,159)	-0.4%	\$16,961,611	\$16,057,069	\$904,542	5.6%	\$71,595,539	\$70,917,156	\$678,383	1.0%
11	11/14/2009	\$52,109,218	\$53,484,812	(\$1,375,594)	-2.6%	\$16,407,349	\$15,829,819	\$577,530	3.6%	\$68,516,567	\$69,314,631	(\$798,064)	-1.2%
12	11/21/2009	\$52,427,881	\$52,806,511	(\$378,630)	-0.7%	\$15,829,561	\$16,460,748	(\$631,187)	-3.8%	\$68,257,442	\$69,267,259	(\$1,009,817)	-1.5%
13	11/28/2009	\$50,519,477	\$52,199,741	(\$1,680,264)	-3.2%	\$15,710,447	\$17,397,576	(\$1,687,129)	-9.7%	\$66,229,924	\$69,597,317	(\$3,367,393)	-4.8%
14	12/5/2009	\$54,376,448	\$56,731,851	(\$2,355,403)	-4.2%	\$16,905,341	\$20,363,789	(\$3,458,449)	-17.0%	\$71,281,789	\$77,095,640	(\$5,813,852)	-7.5%
15	12/12/2009	\$52,654,632	\$54,109,617	(\$1,454,985)	-2.7%	\$17,726,695	\$22,952,228	(\$5,225,533)	-22.8%	\$70,381,327	\$77,061,845	(\$6,680,518)	-8.7%
16	12/19/2009	\$54,542,793	\$55,777,328	(\$1,234,535)	-2.2%	\$19,379,751	\$15,833,517	\$3,546,234	22.4%	\$73,922,544	\$71,610,845	\$2,311,699	3.2%
17	12/26/2009	\$56,482,042	\$57,597,885	(\$1,115,843)	-1.9%	\$17,582,779	\$15,851,771	\$1,731,009	10.9%	\$74,064,821	\$73,449,656	\$615,166	0.8%
18	1/2/2010	\$57,952,304	\$57,582,115	\$370,189	0.6%	\$16,542,885	\$16,900,028	(\$357,143)	-2.1%	\$74,495,189	\$74,482,143	\$13,047	0.0%
19	1/9/2010	\$53,471,476	\$54,250,945	(\$779,469)	-1.4%	\$17,025,616	\$16,203,220	\$822,396	5.1%	\$70,497,092	\$70,454,165	\$42,927	0.1%
20	1/16/2010	\$50,524,929	\$51,625,339	(\$1,100,410)	-2.1%	\$17,489,048	\$15,701,605	\$1,787,443	11.4%	\$68,013,977	\$67,326,944	\$687,033	1.0%
21	1/23/2010	\$51,372,320	\$52,789,573	(\$1,417,253)	-2.7%	\$17,908,259	\$15,897,473	\$2,010,786	12.6%	\$69,280,579	\$68,687,046	\$593,533	0.9%
22	1/30/2010	\$51,826,337	\$55,453,471	(\$3,627,134)	-6.5%	\$19,026,658	\$16,908,272	\$2,118,386	12.5%	\$70,852,995	\$72,361,743	(\$1,508,749)	-2.1%
23	2/6/2010		\$62,247,711				\$18,354,314				\$80,602,025		
24	2/13/2010		\$60,509,056				\$19,218,078				\$79,727,134		
25	2/20/2010		\$59,194,623				\$21,098,199				\$80,292,822		
26	2/27/2010		\$58,857,216				\$24,116,924				\$82,974,140		
27	3/6/2010		\$59,552,257				\$23,995,136				\$83,547,393		
28	3/13/2010		\$53,754,084				\$18,769,831				\$72,523,915		
29	3/20/2010		\$52,581,107				\$15,903,038				\$68,484,145		
30	3/27/2010		\$52,560,961				\$16,094,933				\$68,655,894		
31	4/3/2010		\$56,249,759				\$17,357,002				\$73,606,761		
32	4/10/2010		\$54,440,987				\$17,660,600				\$72,101,587		
33	4/17/2010		\$52,755,834				\$18,469,585				\$71,225,419		
34	4/24/2010		\$51,450,968				\$20,216,898				\$71,667,866		
35	5/1/2010		\$52,327,090				\$23,520,573				\$75,847,663		
36	5/8/2010		\$53,214,412				\$16,241,207				\$69,455,619		
37	5/15/2010		\$50,785,227				\$15,990,544				\$66,775,771		
38	5/22/2010		\$56,567,077				\$15,874,447				\$72,441,524		
39	5/29/2010		\$55,359,239				\$16,040,196				\$71,399,435		
40	6/5/2010		\$60,250,125				\$16,301,599				\$76,551,724		
41	6/12/2010		\$54,979,517				\$16,143,215				\$71,122,732		
42	6/19/2010		\$53,109,433				\$16,357,924				\$69,467,357		

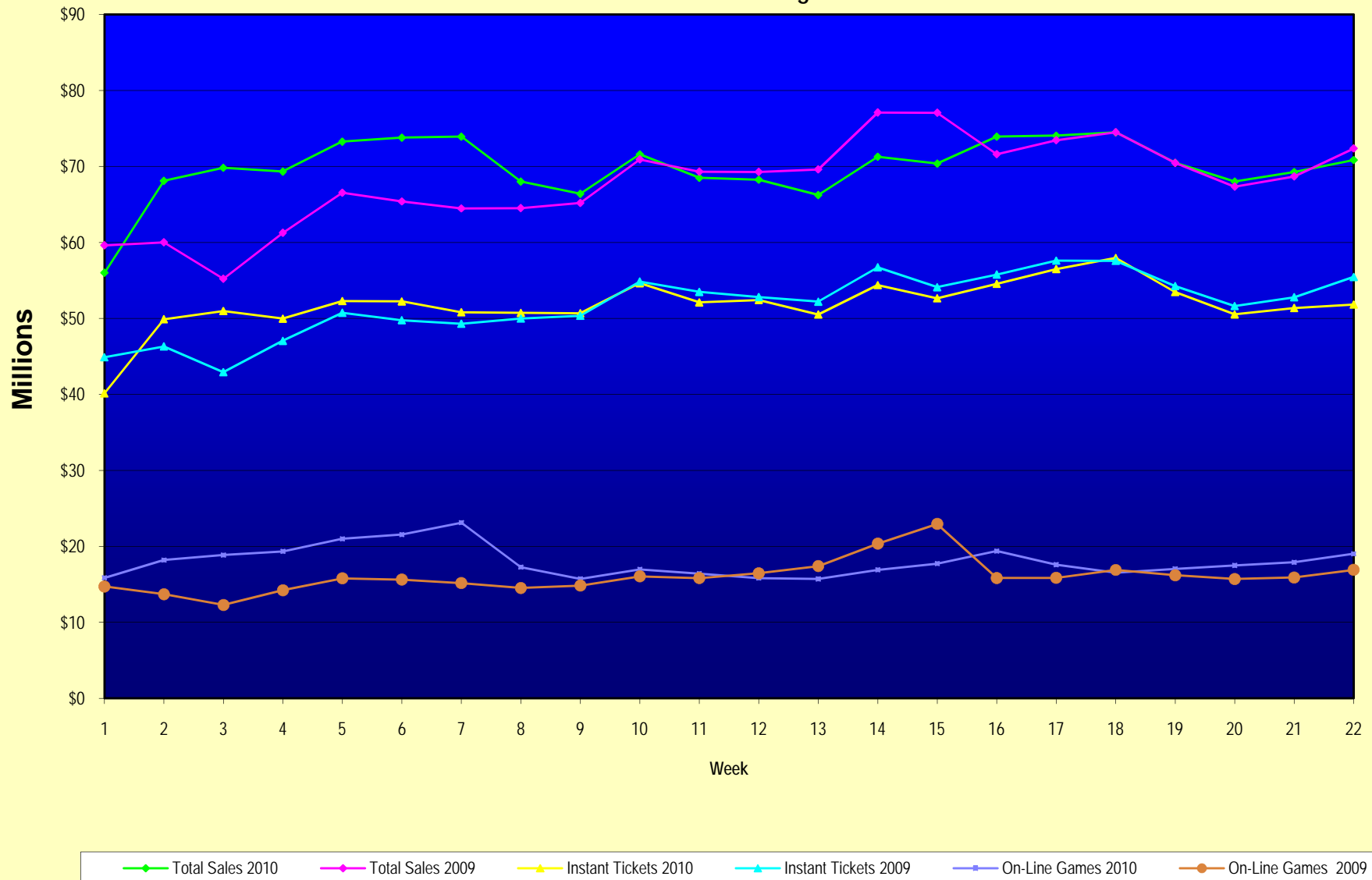
Note: Week 1 is not a full week of sales as this report is prepared on a Fiscal Year basis.

Texas Lottery Commission
Fiscal Year Over Year Change in Sales
Unaudited
FY 2010 Compared to FY 2009

		INSTANT TICKETS				ON-LINE GAMES				TOTAL SALES			
Week	FY 2010 Week Ending	FY 2010	FY 2009	Difference	% change - Cumulative Sales	FY 2010	FY 2009	Difference	% change - Cumulative Sales	FY 2010	FY 2009	Difference	% change - Cumulative Sales
43	6/26/2010		\$53,431,083				\$16,786,203				\$70,217,286		
44	7/3/2010		\$55,518,615				\$18,292,421				\$73,811,036		
45	7/10/2010		\$53,004,390				\$17,842,530				\$70,846,920		
46	7/17/2010		\$52,498,940				\$16,138,341				\$68,637,281		
47	7/24/2010		\$51,550,731				\$16,748,137				\$68,298,868		
48	7/31/2010		\$51,893,977				\$18,065,180				\$69,959,157		
49	8/7/2010		\$54,506,395				\$19,258,117				\$73,764,512		
50	8/14/2010		\$51,766,530				\$20,828,293				\$72,594,823		
51	8/21/2010		\$51,909,040				\$24,913,396				\$76,822,436		
52	8/28/2010		\$50,848,517				\$35,661,563				\$86,510,080		
53			\$13,288,367				\$3,085,816				\$16,374,183		
Total thru Current Week		\$1,140,630,180	\$1,140,569,029	\$61,151	0.0%	\$395,405,420	\$353,237,182	\$42,168,238	11.9%	\$1,536,035,600	\$1,493,806,211	\$42,229,389	2.8%
Fiscal Year Total		\$1,140,630,180	\$2,791,532,297			\$395,405,420	\$928,581,414			\$1,536,035,600	\$3,720,113,711		

** FY 2010 includes 5 days; FY 2009 includes 6 days

Texas Lottery Commission Fiscal Year Over Year Change in Sales



Note: Week 1 is not a full week of sales as this report is prepared on a Fiscal Year basis.

Texas Lottery Commission
Instant Tickets by Price Point
Sales, Prize Expense, Sales Contribution and Payout Percentage With Year Over Year Changes
Unaudited

Fiscal Year	Price Point	# of Active Games	FY Sales	% of Instant Ticket Sales	Year over Year Change in Sales	FY Prize Expense	Year over Year Change in Prize Expense	FY Sales Contribution	Year over Year Change in Contribution	Average Prize Payout %	Year over Year Change in Payout %
2009	\$1.00	37	101,677,036	8.9%		61,192,727		40,484,309		60.2%	0.1%
thru	\$2.00	32	196,835,681	17.3%		127,644,321		69,191,360		64.8%	-0.7%
1/31/2009	\$3.00	14	122,750,085	10.8%		80,691,674		42,058,411		65.7%	0.0%
	\$5.00	36	352,094,869	30.9%		239,466,989		112,627,880		68.0%	0.1%
	\$7.00	6	49,688,443	4.4%		33,793,956		15,894,487		68.0%	0.0%
	\$10.00	14	152,317,480	13.4%		106,598,840		45,718,640		70.0%	0.0%
	\$20.00	7	107,201,760	9.4%		76,937,721		30,264,039		71.8%	0.0%
	\$25.00	1	2,373,975	0.2%		1,726,707		647,268		72.7%	0.2%
	\$30.00	3	9,647,100	0.8%		6,990,843		2,656,257		72.5%	0.1%
	\$50.00	3	45,982,600	4.0%		33,240,716		12,741,884		72.3%	0.2%
Total		153	\$1,140,569,029			\$768,284,494		\$372,284,535		67.4%	-0.5%
2010	\$1.00	31	97,502,195	8.5%		58,605,721		38,896,474		60.1%	0.0%
thru	\$2.00	34	163,821,506	14.4%		108,070,719		55,750,787		66.0%	1.3%
1/30/2010	\$3.00	15	142,027,407	12.5%		93,380,394		48,647,013		65.7%	0.2%
	\$5.00	36	329,956,268	28.9%		224,171,123		105,785,145		67.9%	-0.1%
	\$7.00	6	46,142,194	4.0%		31,375,127		14,767,067		68.0%	0.0%
	\$10.00	13	168,438,760	14.8%		117,822,700		50,616,060		69.9%	0.0%
	\$20.00	5	163,146,100	14.3%		121,801,448		41,344,652		74.7%	2.1%
	\$25.00	0	-	0.0%		-		-		0.0%	-100.0%
	\$30.00	0	-	0.0%		-		-		0.0%	-100.0%
	\$50.00	2	29,595,750	2.6%		22,925,379		6,670,371		77.5%	3.9%
Total		142	\$1,140,630,180			\$778,152,612		\$362,477,568		68.2%	0.7%
Variance	\$1.00	-6	-4,174,841		-4.1%	-2,587,006	-4.2%	-1,587,835	-3.9%	-0.08%	
2010 to	\$2.00	2	-33,014,175		-16.8%	-19,573,602	-15.3%	-13,440,573	-19.4%	1.12%	
2009	\$3.00	1	19,277,322		15.7%	12,688,720	15.7%	6,588,602	15.7%	0.01%	
	\$5.00	0	-22,138,601		-6.3%	-15,295,867	-6.4%	-6,842,734	-6.1%	-0.07%	
	\$7.00	0	-3,546,249		-7.1%	-2,418,829	-7.2%	-1,127,420	-7.1%	-0.02%	
	\$10.00	-1	16,121,280		10.6%	11,223,860	10.5%	4,897,420	10.7%	-0.03%	
	\$20.00	-2	55,944,340		52.2%	44,863,727	58.3%	11,080,613	36.6%	2.89%	
	\$25.00	-1	-2,373,975		-100.0%	-1,726,707	-100.0%	-647,268	-100.0%	-72.73%	
	\$30.00	-3	-9,647,100		-100.0%	-6,990,843	-100.0%	-2,656,257	-100.0%	-72.47%	
	\$50.00	-1	-16,386,850		-35.6%	-10,315,337	-31.0%	-6,071,513	-47.7%	5.17%	
Total		-11	\$61,151		0.0%	\$9,868,116	1.3%	-\$9,806,967	-2.6%	0.86%	

Texas Lottery Commission
Instant Tickets by Price Point
Sales, Prize Expense, Sales Contribution and Payout Percentage With Year Over Year Changes
Unaudited

Notes - Instant Ticket Variances

			FY 2010			FY 2009		Difference
Sales	\$1 - \$7		\$779,449,570			\$823,046,114		-\$43,596,544
Prize Exp.	\$1 - \$7		\$515,603,084			\$542,789,667		-\$27,186,583
Sales Cont.	\$1 - \$7		\$263,846,486			\$280,256,447		-\$16,409,961
Prize Exp. %	\$1 - \$7		66.1%			65.9%		0.2%
			FY 2010			FY 2009		Difference
Sales	\$10 - \$50		\$361,180,610			\$317,522,915		\$43,657,695
Prize Exp.	\$10 - \$50		\$262,549,528			\$225,494,827		\$37,054,701
Sales Cont.	\$10 - \$50		\$98,631,082			\$92,028,088		\$6,602,994
Prize Exp. %	\$10 - \$50		72.7%			71.0%		1.7%
			FY 2010			FY 2009		Difference
Sales	Instant		\$1,140,630,180			\$1,140,569,029		\$61,151
Prize Exp.	Instant		\$778,152,612			\$768,284,494		\$9,868,118
Sales Cont.	Instant		\$362,477,568			\$372,284,535		-\$9,806,967
Prize Exp. %	Instant		68.2%			67.4%		0.9%

			FY 2010			FY 2009		Difference
Sales	\$1 - \$10		\$947,888,330			\$975,363,594		-\$27,475,264
Prize Exp.	\$1 - \$10		\$633,425,784			\$649,388,507		-\$15,962,723
Sales Cont.	\$1 - \$10		\$314,462,546			\$325,975,087		-\$11,512,541
Prize Exp. %	\$1 - \$10		66.8%			66.6%		0.2%
			FY 2010			FY 2009		Difference
Sales	\$20 - \$50		\$192,741,850			\$165,205,435		\$27,536,415
Prize Exp.	\$20 - \$50		\$144,726,827			\$118,895,987		\$25,830,841
Sales Cont.	\$20 - \$50		\$48,015,023			\$46,309,448		\$1,705,575
Prize Exp. %	\$20 - \$50		75.1%			72.0%		3.1%
			FY 2010			FY 2009		Difference
Sales	Instant		\$1,140,630,180			\$1,140,569,029		\$61,151
Prize Exp.	Instant		\$778,152,612			\$768,284,494		\$9,868,118
Sales Cont.	Instant		\$362,477,568			\$372,284,535		-\$9,806,967
Prize Exp. %	Instant		68.2%			67.4%		0.9%

Texas Lottery Commission
Weekly Sales Summary
& Comparison to Previous Week
Unaudited

	Week Ending 01/30/2010	% of Sales	Week Ending 01/23/2010	% of Sales	\$ change	% change
	<u>THIS WEEK</u>		<u>LAST WEEK</u>			
Total Sales	<u>\$70,852,995</u>		<u>\$69,280,579</u>		<u>\$1,572,416</u>	2.27%
Instant Tickets	<u>\$51,826,337</u>	73.1%	<u>\$51,372,320</u>	74.2%	<u>\$454,017</u>	0.88%
Lotto Texas	\$4,847,766	6.8%	\$4,777,379	6.9%	\$70,387	1.47%
Pick 3	\$5,114,072	7.2%	\$5,022,300	7.2%	\$91,773	1.83%
Pick 3 Sum It Up	\$98,628	0.1%	\$95,487	0.1%	\$3,142	3.29%
Cash 5	\$1,286,765	1.8%	\$1,278,497	1.8%	\$8,268	0.65%
Texas Two Step	\$792,340	1.1%	\$781,017	1.1%	\$11,323	1.45%
Mega Millions	\$4,803,680	6.8%	\$4,024,412	5.8%	\$779,268	19.36%
Megaplier	\$986,194	1.4%	\$862,949	1.2%	\$123,245	14.28%
Daily 4	\$1,006,100	1.4%	\$977,063	1.4%	\$29,037	2.97%
Daily 4 Sum It Up	\$91,113	0.1%	\$89,156	0.1%	\$1,958	2.20%
Total Online Sales	<u>\$19,026,658</u>		<u>\$17,908,259</u>		<u>\$1,118,399</u>	6.25%

* Totals may not sum due to rounding.

Texas Lottery Commission
Weekly Sales Summary
Unaudited

INSTANT TICKETS
TOP TEN SELLING GAMES

For the Week Ending : 01/30/2010

Rank	Price Point	Game	Sales (Millions)
1	\$ 20	\$500,000,000 BLOCKBUSTER	\$ 5.158
2	\$ 10	GOLD BAR BONANZA	\$ 3.524
3	\$ 5	\$50,000 CASH	\$ 2.824
4	\$ 5	CASINO ROYALE	\$ 2.260
5	\$ 10	SET FOR LIFE	\$ 1.873
6	\$ 7	PRECIOUS PEARL 7S	\$ 1.865
7	\$ 3	BONUS CASHWORD	\$ 1.753
8	\$ 3	BONUS WORD CASHWORD	\$ 1.568
9	\$ 2	BREAK THE BANK	\$ 1.535
10	\$ 5	FIVE STAR CASH	\$ 1.354

Texas Lottery Commission
Prize Payout Tracking Report
Unaudited

Through Week Ending 01/30/2010

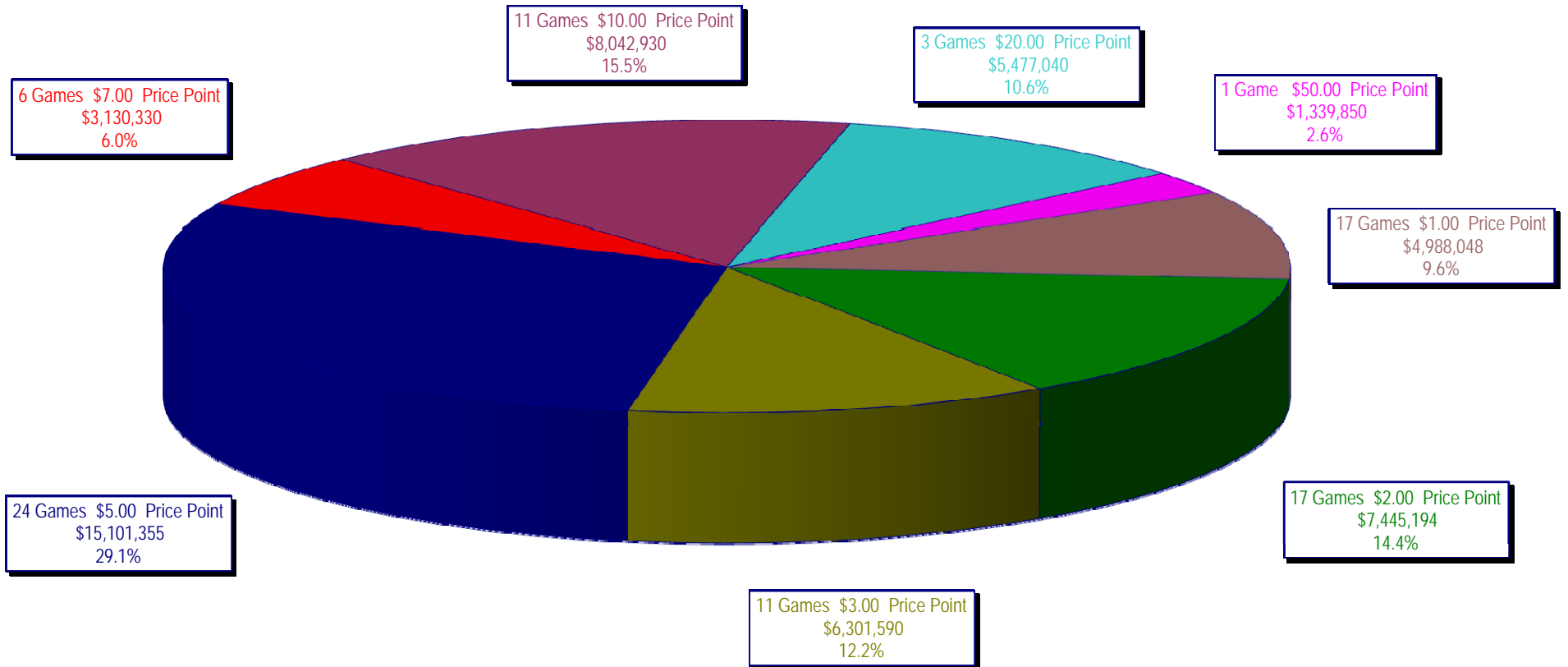
On-Line Sales

		FY Sales Through Week Ending 1/30/2010		FY Prize Expense Through Week Ending 1/30/2010	Actual* Prize Payout	Base Payout (Prize Pool)
Lotto	\$	112,555,437	\$	56,316,108	50.03%	50.00%
Pick 3		111,091,279		52,475,120	47.24%	50.00%
Pick 3 Sum It Up		2,201,529		996,644	45.27%	50.00%
Cash 5		28,030,719		14,980,456	53.44%	50.00%
Texas Two-Step		18,901,001		9,885,587	52.30%	50.00%
Mega Millions		81,001,915		40,436,554	49.92%	50.00%**
Megaplier		18,033,323		6,388,924	35.43%	N/A
Daily 4		21,530,019		10,149,500	47.14%	50.00%
Daily 4-Sum It Up		2,060,198		863,952	41.94%	50.00%
Totals	\$	395,405,420	\$	192,492,845	48.68%	

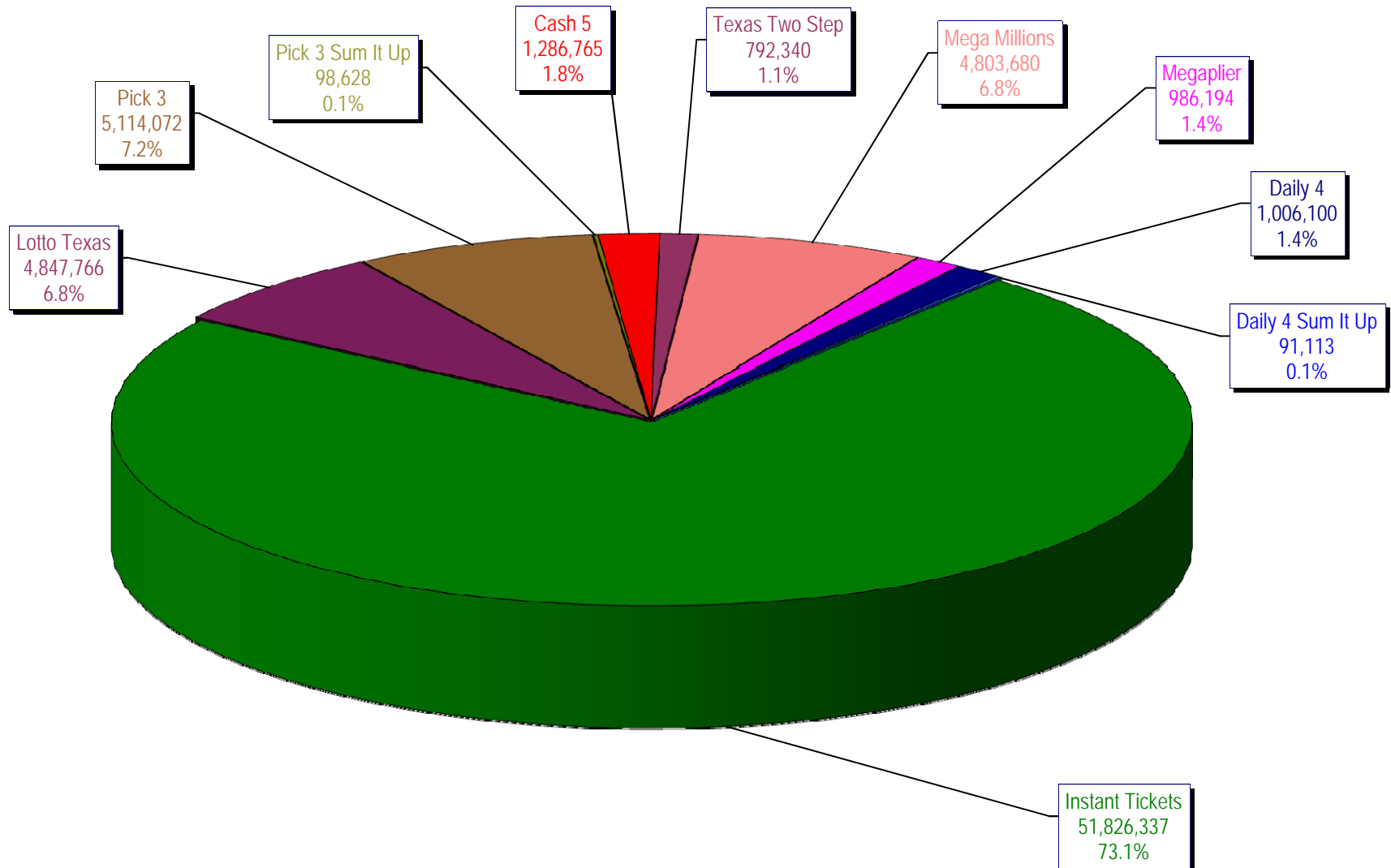
* Before Unclaimed Prizes

** Estimated; depends on # of guaranteed prizes won in Texas

Texas Lottery Commission
Instant Ticket Sales
For the Week Ending 01/30/2010
(Unaudited)



Texas Lottery Commission
All Game Sales
For the Week Ending 01/30/2010
(Unaudited)



Texas Lottery Commission - Weekly Sales Summary for FY 2010 (Unaudited)

Week Ended	Instant Games	New Games & Dates	Lotto Texas	Jackpot W	S	Pick 3	Pick 3 Sum It Up	Cash 5	Texas Two Step	Jackpot M	TH	Mega Millions	Jackpot T	F	Megaplier	Daily 4	Daily 4 Sum It Up	Total	Per Cap.
9/5/2009	53,436,608.00	1183 (\$2,N) - 08/31/09	6,294,287.00	45	47	5,276,229.00	104,886.00	1,338,093.00	1,212,330.00	1.2	200	2,959,401.00	12	12	708,622.00	955,411.00	95,751.00	72,381,618.00	2.98
9/12/2009	49,896,100.00	1200 (\$1,N); 1201 (\$10,N) - 09/07/09	6,426,945.00	49	51	5,109,927.50	104,641.00	1,278,982.00	771,782.00	225	200	2,811,431.00	18	28	693,407.00	918,268.00	90,931.50	68,102,415.00	2.80
9/19/2009	50,971,937.00	1202 (\$3,N); 1185 (\$5,N) - 09/14/09	6,496,645.00	53	55	5,176,010.00	103,700.00	1,295,302.00	803,124.00	200	225	3,164,844.00	38	51	760,088.00	965,671.50	94,237.00	69,831,558.50	2.87
9/26/2009	49,975,243.00	1141 (\$1,N); 1259 (\$3,N) - 09/21/09	6,765,369.00	57	59	4,894,237.50	98,171.00	1,271,129.00	915,249.00	275	400	3,568,088.00	62	75	822,408.00	918,596.00	92,187.50	69,320,678.00	2.85
10/3/2009	52,283,569.00	1203 (\$2,N); 1172 (\$5,N) - 09/28/09	7,003,107.00	61	63	5,156,873.00	102,841.50	1,315,863.00	1,111,913.00	525	650	4,270,019.00	88	105	939,935.00	993,158.50	97,984.50	73,275,263.50	3.01
10/10/2009	52,238,261.00	1205 (\$1,N); 1263 (\$3,N) - 10/05/09	7,061,948.00	64	67	5,050,571.00	102,586.50	1,300,852.00	811,464.00	200	225	5,100,350.00	122	145	1,050,507.00	971,147.50	98,012.50	73,785,699.50	3.03
10/17/2009	50,806,599.00	1187 (\$2,N); 1193 (\$20,N) - 10/12/09	7,262,683.00	70	73	4,990,457.00	99,389.50	1,276,305.00	769,253.00	200	200	6,449,660.00	170	200	1,245,391.00	931,084.00	90,371.00	73,921,192.50	3.04
10/24/2009	50,731,592.00	1188 (\$3,N); 1189 (\$5,N) - 10/19/09	5,785,292.00	76	4	4,845,815.00	93,256.00	1,282,033.00	806,971.00	225	275	2,776,628.00	12	18	663,491.00	931,641.00	89,284.00	68,006,003.00	2.80
10/31/2009	50,684,853.00	1192 (\$10,N); 1186 (\$1,N) - 10/26/09	3,749,006.00	5	6	4,944,409.00	98,542.50	1,289,523.00	815,750.00	375	200	2,988,991.00	28	40	717,574.00	1,006,435.00	100,489.50	66,395,573.00	2.73
11/7/2009	54,633,928.00	1191 (\$7,N) - 11/02/09	3,982,319.00	7	8	5,265,020.50	105,180.50	1,339,215.00	853,140.00	225	275	3,458,403.00	50	63	795,045.00	1,058,564.00	104,724.00	71,595,539.00	2.94
11/14/2009	52,109,218.00	1218 (\$2,N); 1184 (\$5,N) - 11/09/09	3,985,493.00	9	10	5,172,602.50	104,782.00	1,274,573.00	829,607.00	375	200	3,210,618.00	77	12	752,365.00	983,342.50	93,966.00	68,516,567.00	2.82
11/21/2009	52,427,881.00	0	3,943,958.00	11	12	5,123,802.00	104,705.00	1,255,026.00	797,796.00	225	275	2,834,318.00	17	27	687,221.00	990,042.00	92,693.00	68,257,442.00	2.81
11/28/2009	50,519,477.00	1206 (\$1,N); 1190 (\$5,N); 1264 (\$1,N) - 11/23/09	3,966,034.00	13	14	5,043,210.00	102,783.50	1,202,798.00	693,774.00	200	225	2,932,809.00	37	47	691,194.00	985,336.50	92,508.00	66,229,924.00	2.72
12/5/2009	54,376,448.00	0	4,004,632.00	15	16	5,393,458.00	111,441.50	1,288,282.00	873,210.00	250	350	3,297,486.00	57	69	773,136.00	1,063,424.00	100,271.00	71,281,788.50	2.93
12/12/2009	52,654,632.00	1159 (\$2,N); 1182 (\$5,N) - 12/07/09 1196 (\$5,N) - 12/09/09	4,105,013.00	17	18	5,091,389.00	102,613.50	1,294,933.00	1,075,732.00	475	600	4,054,401.00	83	100	874,842.00	1,030,471.50	97,299.50	70,381,326.50	2.89
12/19/2009	54,542,793.00	1207 (\$1,N); 1208 (\$3,N) - 12/14/09	4,355,440.00	20	21	5,115,559.00	100,562.50	1,293,347.00	1,288,820.00	750	925	5,052,350.00	118	140	1,028,695.00	1,046,577.50	98,399.50	73,922,543.50	3.04
12/26/2009	56,482,042.00	1209 (\$2,N); 1168 (\$5,N) - 12/21/09	4,400,669.00	22	24	4,950,247.50	92,929.50	1,243,523.00	767,273.00	200	200	4,188,741.00	162	12	866,559.00	982,220.50	90,616.50	74,064,821.00	3.04
1/2/2010	57,952,304.00	0	4,605,833.00	26	27	5,021,566.50	97,500.50	1,319,224.00	889,422.00	225	275	2,825,733.00	16	27	676,790.00	1,012,922.00	93,894.00	74,495,189.00	3.06
1/9/2010	53,471,476.00	1210 (1,N); 1211 (\$10,N) - 01/04/10	4,579,485.00	29	31	5,094,846.00	97,216.00	1,297,994.00	1,024,853.00	375	525	3,114,965.00	37	48	735,440.00	989,636.00	91,180.50	70,497,091.50	2.90
1/16/2010	50,524,929.00	1169 (\$1,N); 1212 (\$5,N) - 01/11/10	4,695,322.00	32	33	5,126,839.50	97,356.00	1,291,866.00	940,190.00	200	200	3,482,816.00	60	73	785,670.00	977,468.00	91,520.00	68,013,976.50	2.80
1/23/2010	51,372,320.00	1195 (\$2,N) - 01/18/10 1198 (\$2,N); 1164 (\$5,N) - 01/21/10	4,777,379.05	35	36	5,022,299.50	95,486.50	1,278,497.00	781,017.00	200	225	4,024,412.00	86	105	862,949.00	977,063.00	89,155.50	69,280,578.55	2.85
1/30/2010	51,826,337.00	1204 (\$7,N); 1213 (\$1,N) - 01/25/10 1265 (\$2,N) - 01/27/10	4,847,766.00	37	39	5,114,072.00	98,628.00	1,286,765.00	792,340.00	275	200	4,803,680.00	121	144	986,194.00	1,006,099.50	91,113.00	70,852,994.50	2.91
weekly change	0.88%		1.47%			1.83%	3.29%	0.65%	1.45%			19.36%			14.28%	2.97%	2.20%	2.27%	
	SALES		SALES			SALES	SALES	SALES	SALES			SALES			SALES	SALES	SALES	SALES	% of Sales
Startup to date	37,412,748,479.00		10,592,168,984.05			3,694,689,036.50	14,602,604.50	2,217,934,859.00	496,688,932.00			1,222,532,514.45			283,601,610.00	110,580,230.00	15,814,024.50	56,269,495,246.00	100.0%
Calendar Year to date	223,731,828.00		20,858,733.05			22,003,471.50	129,025.00	5,549,903.00	3,604,616.00			16,385,057.00			3,601,381.00	4,275,669.00	393,331.50	300,533,015.05	100.0%
Fiscal Year to date 2010	1,140,630,180.00		112,555,437.05			111,091,279.00	2,201,529.00	28,030,719.00	18,901,001.00			81,001,915.00			18,033,323.00	21,530,019.00	2,060,197.50	1,536,035,599.55	100.0%