



WEEKLY SALES SUMMARY

Unaudited

Week Ending: 01/31/2009

Texas Lottery Commission
Fiscal Year to Date Sales Comparison
Unaudited

Through the week ending 01/31/2009 (22 weeks)

Sales by Game	FY 2007 *	FY 2008 **	FY 2009	\$ Change		% Change	
				FY 2009 to FY 2007	FY 2009 to FY 2008	FY 2009 to FY 2007	FY 2009 to FY 2008
Instant	\$ 1,196,902,862	\$ 1,188,482,863	\$ 1,140,569,029	\$ -56,333,833	\$ -47,913,834	-4.7%	-4.0%
Lotto Texas	90,380,783	90,038,029	76,882,609	-13,498,174	-13,155,420	-14.9%	-14.6%
Pick 3	132,685,801	119,991,015	117,385,039	-15,300,763	-2,605,976	-11.5%	-2.2%
Pick 3 Sum It Up	-	2,238,004	2,482,753	2,482,753	244,749	-	10.9%
Cash 5	37,291,758	32,776,907	29,796,687	-7,495,071	-2,980,220	-20.1%	-9.1%
Texas Two Step	22,929,484	17,235,170	19,287,191	-3,642,293	2,052,021	-15.9%	11.9%
Mega Millions	61,628,601	62,376,173	70,433,816	8,805,215	8,057,643	14.3%	12.9%
Megaplier	15,160,122	15,493,717	16,795,928	1,635,806	1,302,211	10.8%	8.4%
Daily 4	-	17,434,535	17,903,594	17,903,594	469,059	-	2.7%
Daily 4 Sum It Up	-	4,356,808	2,269,567	2,269,567	-2,087,241	-	-47.9%
Total	\$ 1,556,979,411	\$ 1,550,423,220	\$ 1,493,806,211	\$ -63,173,200	\$ -56,617,009	-4.1%	-3.7%

* 3 extra days in 2007 ** 2 extra days in 2008

Texas Lottery Commission
Fiscal Year Over Year Change in Sales
Unaudited
FY 2009 Compared to FY 2008

Week	FY 2009 Week Ending	INSTANT TICKETS				ON-LINE GAMES				TOTAL SALES			
		FY 2009	FY 2008	Difference	% change - Cumulative Sales	FY 2009	FY 2008	Difference	% change - Cumulative Sales	FY 2009	FY 2008	Difference	% change - Cumulative Sales
1	9/6/2008**	\$44,890,104	\$62,376,229	(\$17,486,125)	-28.0%	\$14,722,011	\$19,372,224	(\$4,650,213)	-24.0%	\$59,612,115	\$81,748,453	(\$22,136,338)	-27.1%
2	9/13/2008	\$46,309,551	\$52,458,866	(\$6,149,315)	-20.6%	\$13,704,860	\$16,926,163	(\$3,221,303)	-21.7%	\$60,014,411	\$69,385,029	(\$9,370,618)	-20.8%
3	9/20/2008	\$42,923,171	\$49,998,934	(\$7,075,763)	-18.6%	\$12,291,263	\$15,792,283	(\$3,501,020)	-21.8%	\$55,214,434	\$65,791,217	(\$10,576,783)	-19.4%
4	9/27/2008	\$47,042,801	\$49,894,175	(\$2,851,374)	-15.6%	\$14,222,339	\$14,800,514	(\$578,175)	-17.9%	\$61,265,140	\$64,694,689	(\$3,429,549)	-16.2%
5	10/4/2008	\$50,747,162	\$53,486,863	(\$2,739,701)	-13.5%	\$15,784,472	\$16,618,430	(\$833,958)	-15.3%	\$66,531,634	\$70,105,293	(\$3,573,659)	-14.0%
6	10/11/2008	\$49,763,789	\$50,918,020	(\$1,154,231)	-11.7%	\$15,622,498	\$15,601,410	\$21,088	-12.9%	\$65,386,287	\$66,519,430	(\$1,133,143)	-12.0%
7	10/18/2008	\$49,299,053	\$50,532,253	(\$1,233,200)	-10.5%	\$15,167,940	\$15,682,666	(\$514,726)	-11.6%	\$64,466,993	\$66,214,919	(\$1,747,926)	-10.7%
8	10/25/2008	\$49,977,581	\$50,347,450	(\$369,869)	-9.3%	\$14,525,843	\$15,586,516	(\$1,060,673)	-11.0%	\$64,503,424	\$65,933,966	(\$1,430,542)	-9.7%
9	11/1/2008	\$50,346,542	\$53,953,733	(\$3,607,191)	-9.0%	\$14,838,845	\$16,775,983	(\$1,937,139)	-11.1%	\$65,185,387	\$70,729,716	(\$5,544,330)	-9.5%
10	11/8/2008	\$54,860,087	\$53,635,090	\$1,224,997	-7.9%	\$16,057,069	\$15,912,791	\$144,278	-9.9%	\$70,917,156	\$69,547,881	\$1,369,275	-8.3%
11	11/15/2008	\$53,484,812	\$51,254,401	\$2,230,411	-6.8%	\$15,829,819	\$15,797,076	\$32,744	-9.0%	\$69,314,631	\$67,051,477	\$2,263,155	-7.3%
12	11/22/2008	\$52,806,511	\$50,897,817	\$1,908,694	-5.9%	\$16,460,748	\$15,801,720	\$659,028	-7.9%	\$69,267,259	\$66,699,537	\$2,567,722	-6.4%
13	11/29/2008	\$52,199,741	\$53,913,115	(\$1,713,374)	-5.7%	\$17,397,576	\$17,055,505	\$342,072	-7.1%	\$69,597,317	\$70,968,620	(\$1,371,303)	-6.0%
14	12/6/2008	\$56,731,851	\$55,702,697	\$1,029,154	-5.1%	\$20,363,789	\$17,900,717	\$2,463,073	-5.5%	\$77,095,640	\$73,603,414	\$3,492,227	-5.2%
15	12/13/2008	\$54,109,617	\$53,703,516	\$406,101	-4.7%	\$22,952,228	\$17,820,841	\$5,131,387	-3.0%	\$77,061,845	\$71,524,357	\$5,537,488	-4.3%
16	12/20/2008	\$55,777,328	\$57,592,769	(\$1,815,441)	-4.6%	\$15,833,517	\$17,436,233	(\$1,602,716)	-3.4%	\$71,610,845	\$75,029,002	(\$3,418,157)	-4.3%
17	12/27/2008	\$57,597,885	\$57,696,003	(\$98,118)	-4.3%	\$15,851,771	\$14,743,680	\$1,108,091	-2.9%	\$73,449,656	\$72,439,683	\$1,009,973	-4.0%
18	1/3/2009	\$57,582,115	\$57,935,952	(\$353,837)	-4.1%	\$16,900,028	\$15,704,450	\$1,195,578	-2.3%	\$74,482,143	\$73,640,402	\$841,741	-3.7%
19	1/10/2009	\$54,250,945	\$55,360,542	(\$1,109,597)	-4.0%	\$16,203,220	\$15,691,540	\$511,680	-2.0%	\$70,454,165	\$71,052,082	(\$597,917)	-3.5%
20	1/17/2009	\$51,625,339	\$54,920,166	(\$3,294,827)	-4.1%	\$15,701,605	\$16,259,669	(\$558,064)	-2.1%	\$67,326,944	\$71,179,835	(\$3,852,891)	-3.6%
21	1/24/2009	\$52,789,573	\$54,439,890	(\$1,650,317)	-4.1%	\$15,897,473	\$16,691,724	(\$794,251)	-2.2%	\$68,687,046	\$71,131,614	(\$2,444,568)	-3.6%
22	1/31/2009	\$55,453,471	\$57,464,382	(\$2,010,911)	-4.0%	\$16,908,272	\$17,968,227	(\$1,059,955)	-2.4%	\$72,361,743	\$75,432,609	(\$3,070,866)	-3.7%
23	2/7/2009		\$60,715,019				\$20,097,338				\$80,812,357		
24	2/14/2009		\$57,093,143				\$22,179,908				\$79,273,051		
25	2/21/2009		\$57,627,047				\$27,230,539				\$84,857,586		
26	2/28/2009		\$55,591,667				\$17,016,118				\$72,607,785		
27	3/7/2009		\$56,837,481				\$16,690,193				\$73,527,674		
28	3/14/2009		\$54,587,112				\$16,448,165				\$71,035,277		
29	3/21/2009		\$53,098,937				\$16,639,184				\$69,738,121		
30	3/28/2009		\$53,933,689				\$17,698,625				\$71,632,314		
31	4/4/2009		\$57,598,982				\$17,665,411				\$75,264,393		
32	4/11/2009		\$53,954,185				\$15,860,784				\$69,814,969		
33	4/18/2009		\$53,946,736				\$16,452,676				\$70,399,412		
34	4/25/2009		\$51,533,006				\$16,873,949				\$68,406,955		
35	5/2/2009		\$53,250,568				\$18,202,103				\$71,452,671		
36	5/9/2009		\$54,060,849				\$18,422,562				\$72,483,411		
37	5/16/2009		\$54,010,641				\$20,728,360				\$74,739,001		
38	5/23/2009		\$50,377,032				\$15,461,384				\$65,838,416		
39	5/30/2009		\$49,545,080				\$15,175,370				\$64,720,450		
40	6/6/2009		\$53,702,986				\$15,982,166				\$69,685,152		

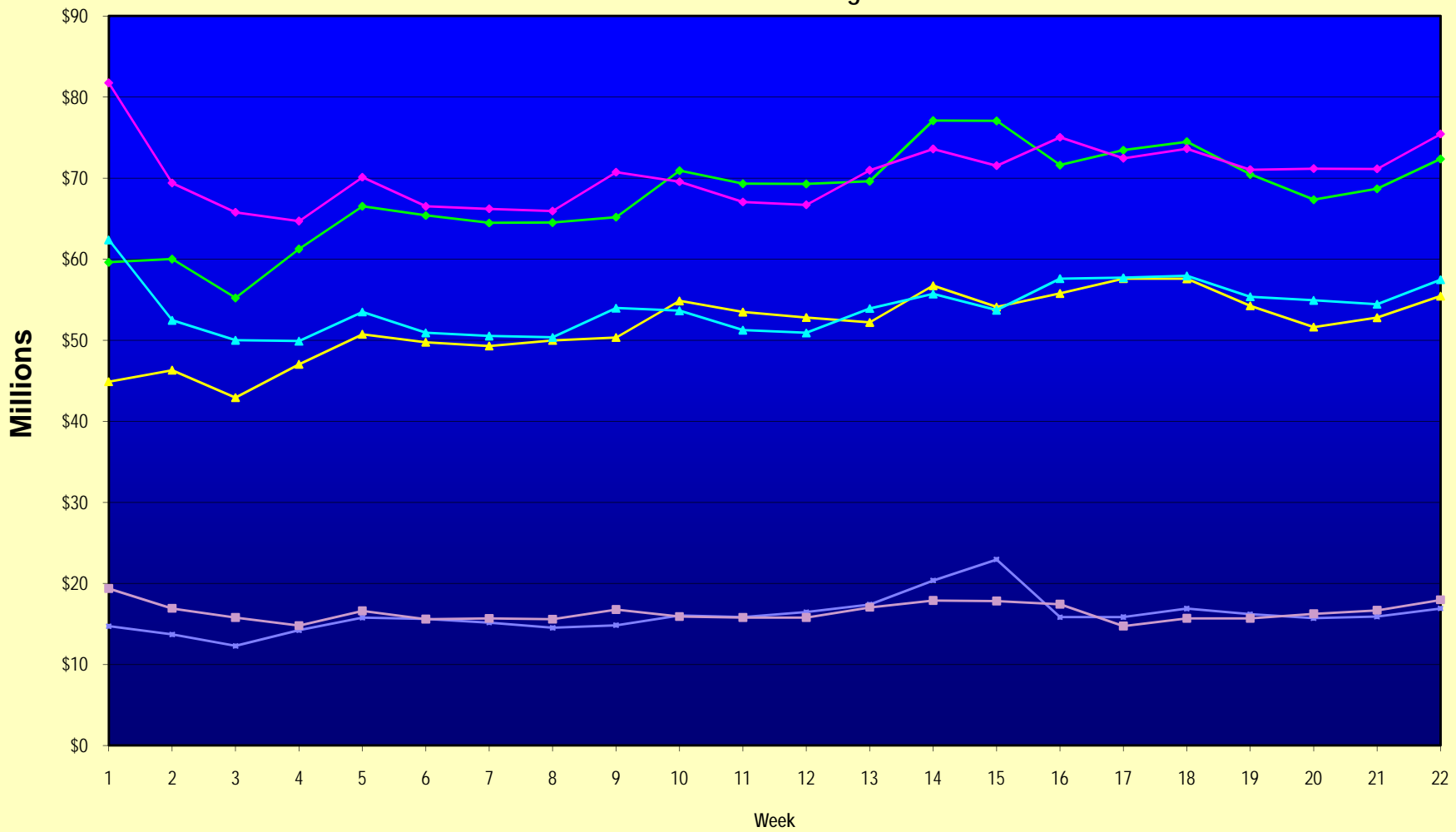
Note: Week 1 is not a full week of sales as this report is prepared on a Fiscal Year basis.

Texas Lottery Commission
Fiscal Year Over Year Change in Sales
Unaudited
FY 2009 Compared to FY 2008

Week	FY 2009 Week Ending	INSTANT TICKETS				ON-LINE GAMES				TOTAL SALES			
		FY 2009	FY 2008	Difference	% change - Cumulative Sales	FY 2009	FY 2008	Difference	% change - Cumulative Sales	FY 2009	FY 2008	Difference	% change - Cumulative Sales
41	6/13/2009		\$51,171,483				\$16,589,087				\$67,760,570		
42	6/20/2009		\$50,650,362				\$15,728,484				\$66,378,846		
43	6/27/2009		\$49,258,266				\$15,250,905				\$64,509,171		
44	7/4/2009		\$53,393,355				\$16,270,619				\$69,663,974		
45	7/11/2009		\$53,127,756				\$16,914,922				\$70,042,678		
46	7/18/2009		\$51,593,146				\$17,752,738				\$69,345,884		
47	7/25/2009		\$49,902,181				\$16,706,145				\$66,608,326		
48	8/1/2009		\$49,605,420				\$16,254,383				\$65,859,803		
49	8/8/2009		\$50,961,907				\$16,770,496				\$67,732,403		
50	8/15/2009		\$49,452,511				\$16,749,487				\$66,201,998		
51	8/22/2009		\$49,249,518				\$17,286,302				\$66,535,820		
52	8/29/2009		\$49,468,928				\$18,109,997				\$67,578,925		
53	9/5/2009		\$6,054,239				\$493,109				\$6,547,348		
Total thru Current Week		\$1,140,569,029	\$1,188,482,863	(\$47,913,834)	-4.0%	\$353,237,182	\$361,940,357	(\$8,703,175)	-2.4%	\$1,493,806,211	\$1,550,423,220	(\$56,617,009)	-3.7%
Fiscal Year Total		\$1,140,569,029	\$2,783,836,095			\$353,237,182	\$887,641,858			\$1,493,806,211	\$3,671,477,953		

** FY 2009 includes 6 days; FY 2008 includes 8 days
FY 2009 average daily sales are \$9,242,258. Two days at average daily sales are \$18,484,516.

Texas Lottery Commission Fiscal Year Over Year Change in Sales



Note: Week 1 is not a full week of sales as this report is prepared on a Fiscal Year basis.

Texas Lottery Commission
Instant Tickets by Price Point
Sales, Prize Expense, Sales Contribution and Payout Percentage With Year Over Year Changes
Unaudited

Fiscal Year	Price Point	# of Active Games	FY Sales	% of Instant Ticket Sales	Year over Year Change in Sales	FY Prize Expense	Year over Year Change in Prize Expense	FY Sales Contribution	Year over Year Change in Contribution	Average Prize Payout %	Year over Year Change in Payout %
2008	\$1.00	39	102,344,837	8.6%		61,485,103		40,859,734		60.1%	0.0%
thru	\$2.00	44	196,625,598	16.5%		127,824,916		68,800,682		65.0%	0.2%
2/2/2008	\$3.00	12	94,942,227	8.0%		62,440,660		32,501,567		65.8%	-0.1%
	\$5.00	37	326,236,850	27.4%		220,785,622		105,451,228		67.7%	-0.5%
	\$7.00	11	80,548,685	6.8%		54,774,312		25,774,373		68.0%	0.1%
	\$10.00	17	183,470,686	15.4%		127,548,673		55,922,013		69.5%	-1.4%
	\$20.00	6	68,398,900	5.8%		49,176,895		19,222,005		71.9%	-0.1%
	\$25.00	2	40,360,200	3.4%		29,303,631		11,056,569		72.6%	0.3%
	\$30.00	3	22,470,180	1.9%		16,259,160		6,211,020		72.4%	0.1%
	\$50.00	2	73,084,700	6.1%		52,724,993		20,359,707		72.1%	0.0%
Total		173	\$1,188,482,863			\$802,323,964		\$386,158,899		67.5%	
2009	\$1.00	37	101,677,036	8.9%		61,192,727		40,484,309		60.2%	0.1%
thru	\$2.00	32	196,835,681	17.3%		127,644,321		69,191,360		64.8%	-0.7%
1/31/2009	\$3.00	14	122,750,085	10.8%		80,691,674		42,058,411		65.7%	0.0%
	\$5.00	36	352,094,869	30.9%		239,466,989		112,627,880		68.0%	0.1%
	\$7.00	6	49,688,443	4.4%		33,793,956		15,894,487		68.0%	0.0%
	\$10.00	14	152,317,480	13.4%		106,598,840		45,718,640		70.0%	0.0%
	\$20.00	7	107,201,760	9.4%		76,937,721		30,264,039		71.8%	0.0%
	\$25.00	1	2,373,975	0.2%		1,726,707		647,268		72.7%	0.2%
	\$30.00	3	9,647,100	0.8%		6,990,843		2,656,257		72.5%	0.1%
	\$50.00	3	45,982,600	4.0%		33,240,716		12,741,884		72.3%	0.2%
Total		153	\$1,140,569,029			\$768,284,494		\$372,284,535		67.4%	
Variance	\$1.00	-2	-667,801		-0.7%	-292,376	-0.5%	-375,425	-0.9%	0.11%	
2009 to	\$2.00	-12	210,083		0.1%	-180,595	-0.1%	390,678	0.6%	-0.16%	
2008	\$3.00	2	27,807,858		29.3%	18,251,014	29.2%	9,556,844	29.4%	-0.03%	
	\$5.00	-1	25,858,019		7.9%	18,681,368	8.5%	7,176,651	6.8%	0.34%	
	\$7.00	-5	-30,860,242		-38.3%	-20,980,356	-38.3%	-9,879,886	-38.3%	0.01%	
	\$10.00	-3	-31,153,206		-17.0%	-20,949,834	-16.4%	-10,203,372	-18.2%	0.46%	
	\$20.00	1	38,802,860		56.7%	27,760,826	56.5%	11,042,034	57.4%	-0.13%	
	\$25.00	-1	-37,986,225		-94.1%	-27,576,925	-94.1%	-10,409,300	-94.1%	0.13%	
	\$30.00	0	-12,823,080		-57.1%	-9,268,316	-57.0%	-3,554,764	-57.2%	0.11%	
	\$50.00	1	-27,102,100		-37.1%	-19,484,277	-37.0%	-7,617,823	-37.4%	0.15%	
Total		-20	-\$47,913,834		-4.0%	-\$34,039,471	-4.2%	-\$13,874,363	-3.6%	-0.15%	

Texas Lottery Commission
Instant Tickets by Price Point
Sales, Prize Expense, Sales Contribution and Payout Percentage With Year Over Year Changes
Unaudited

Notes - Instant Ticket Variances

		FY 2009		FY 2008		Difference
Sales	\$1 - \$7		\$823,046,114		\$800,698,197	\$22,347,917
Prize Exp.	\$1 - \$7		\$542,789,667		\$527,310,612	\$15,479,055
Sales Cont.	\$1 - \$7		\$280,256,447		\$273,387,585	\$6,868,862
Prize Exp. %	\$1 - \$7		65.9%		65.9%	0.1%
		FY 2009		FY 2008		Difference
Sales	\$10 - \$50		\$317,522,915		\$387,784,666	-\$70,261,751
Prize Exp.	\$10 - \$50		\$225,494,827		\$275,013,352	-\$49,518,525
Sales Cont.	\$10 - \$50		\$92,028,088		\$112,771,314	-\$20,743,226
Prize Exp. %	\$10 - \$50		71.0%		70.9%	0.1%
		FY 2009		FY 2008		Difference
Sales	Instant		\$1,140,569,029		\$1,188,482,863	-\$47,913,834
Prize Exp.	Instant		\$768,284,494		\$802,323,964	-\$34,039,471
Sales Cont.	Instant		\$372,284,535		\$386,158,899	-\$13,874,363
Prize Exp. %	Instant		67.4%		67.5%	-0.1%

		FY 2009		FY 2008		Difference
Sales	\$1 - \$10		\$975,363,594		\$984,168,883	-\$8,805,289
Prize Exp.	\$1 - \$10		\$649,388,507		\$654,859,286	-\$5,470,779
Sales Cont.	\$1 - \$10		\$325,975,087		\$329,309,597	-\$3,334,510
Prize Exp. %	\$1 - \$10		66.6%		66.5%	0.0%
		FY 2009		FY 2008		Difference
Sales	\$20 - \$50		\$165,205,435		\$204,313,980	-\$39,108,545
Prize Exp.	\$20 - \$50		\$118,895,987		\$147,464,679	-\$28,568,692
Sales Cont.	\$20 - \$50		\$46,309,448		\$56,849,301	-\$10,539,853
Prize Exp. %	\$20 - \$50		72.0%		72.2%	-0.2%
		FY 2009		FY 2008		Difference
Sales	Instant		\$1,140,569,029		\$1,188,482,863	-\$47,913,834
Prize Exp.	Instant		\$768,284,494		\$802,323,964	-\$34,039,471
Sales Cont.	Instant		\$372,284,535		\$386,158,899	-\$13,874,363
Prize Exp. %	Instant		67.4%		67.5%	-0.1%

Texas Lottery Commission
Weekly Sales Summary
& Comparison to Previous Week
 Unaudited

	Week Ending 01/31/2009		Week Ending 01/24/2009			
	<u>THIS WEEK</u>	% of Sales	<u>LAST WEEK</u>	% of Sales	<u>\$ change</u>	<u>% change</u>
Total Sales	<u>\$72,361,743</u>		<u>\$68,687,046</u>		<u>\$3,674,698</u>	5.35%
Instant Tickets	<u>\$55,453,471</u>	76.6%	<u>\$52,789,573</u>	76.9%	<u>\$2,663,898</u>	5.05%
Lotto Texas	\$3,837,299	5.3%	\$3,723,836	5.4%	\$113,464	3.05%
Pick 3	\$5,700,715	7.9%	\$5,514,548	8.0%	\$186,167	3.38%
Pick 3 Sum It Up	\$121,795	0.2%	\$115,828	0.2%	\$5,967	5.15%
Cash 5	\$1,403,756	1.9%	\$1,376,695	2.0%	\$27,061	1.97%
Texas Two Step	\$1,070,879	1.5%	\$860,483	1.3%	\$210,396	24.45%
Mega Millions	\$3,002,883	4.1%	\$2,692,611	3.9%	\$310,272	11.52%
Megaplier	\$731,253	1.0%	\$676,936	1.0%	\$54,317	8.02%
Daily 4	\$925,938	1.3%	\$836,996	1.2%	\$88,942	10.63%
Daily 4 Sum It Up	\$113,756	0.2%	\$99,541	0.1%	\$14,215	14.28%
Total Online Sales	<u>\$16,908,272</u>		<u>\$15,897,473</u>		<u>\$1,010,800</u>	6.36%

* Totals may not sum due to rounding.

Texas Lottery Commission
Weekly Sales Summary
Unaudited

INSTANT TICKETS
TOP TEN SELLING GAMES

For the Week Ending : 01/31/2009

Rank	Price Point	Game	Sales (Millions)
1	\$ 5	WELCOME TO FABULOUS LAS VEGAS	\$ 4.124
2	\$ 5	HOT HAND	\$ 2.858
3	\$ 10	MEGA JUMBO BUCKS II	\$ 2.692
4	\$ 3	BONUS CASHWORD	\$ 2.395
5	\$ 20	SUPER SET FOR LIFE	\$ 2.347
6	\$ 5	GIANT JUMBO BUCKS II	\$ 2.284
7	\$ 2	NEON 9'S	\$ 2.190
8	\$ 10	SET FOR LIFE	\$ 2.123
9	\$ 7	SIZZLIN' RED 7'S	\$ 2.003
10	\$ 20	TEXAS \$50 MILLION CLUB	\$ 1.992

Texas Lottery Commission
Prize Payout Tracking Report
Unaudited

Through Week Ending 01/31/2009

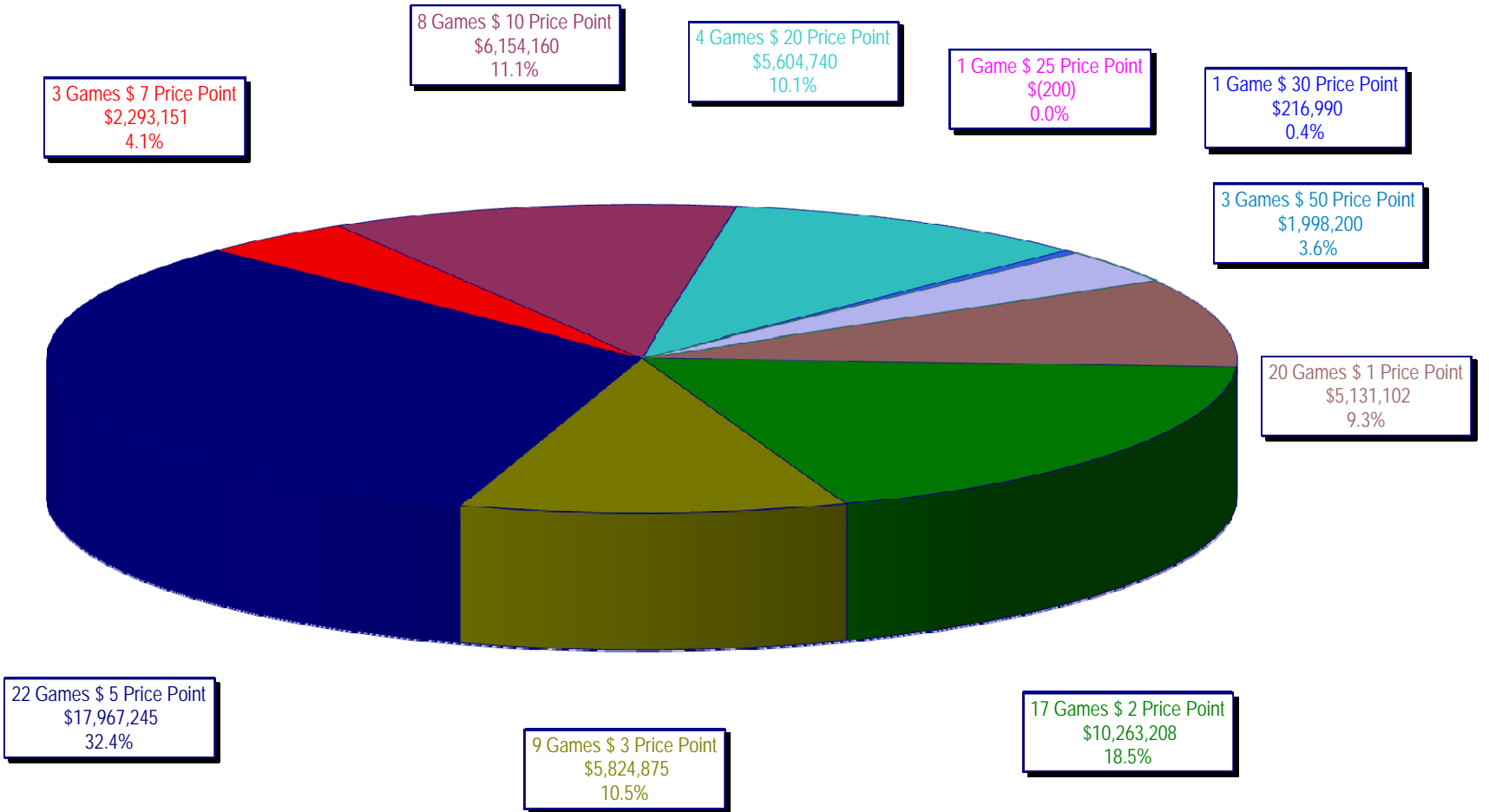
On-Line Sales

		FY Sales Through Week Ending 1/31/2009		FY Prize Expense Through Week Ending 1/31/2009	Actual* Prize Payout	Base Payout (Prize Pool)
Lotto	\$	76,882,609	\$	38,540,301	50.13%	50.00%
Pick 3		117,385,039		58,238,180	49.61%	50.00%
Pick 3 Sum It Up		2,482,753		1,119,635	45.10%	50.00%
Cash 5		29,796,687		14,999,349	50.34%	50.00%
Texas Two-Step		19,287,191		10,697,459	55.46%	50.00%
Mega Millions		70,433,816		34,726,567	49.30%	50.00%**
Megaplier		16,795,928		7,457,558	44.40%	N/A
Daily 4		17,903,594		8,003,625	44.70%	50.00%
Daily 4-Sum It Up		2,269,567		961,829	42.38%	50.00%
Totals	\$	353,237,182	\$	174,744,503	49.47%	

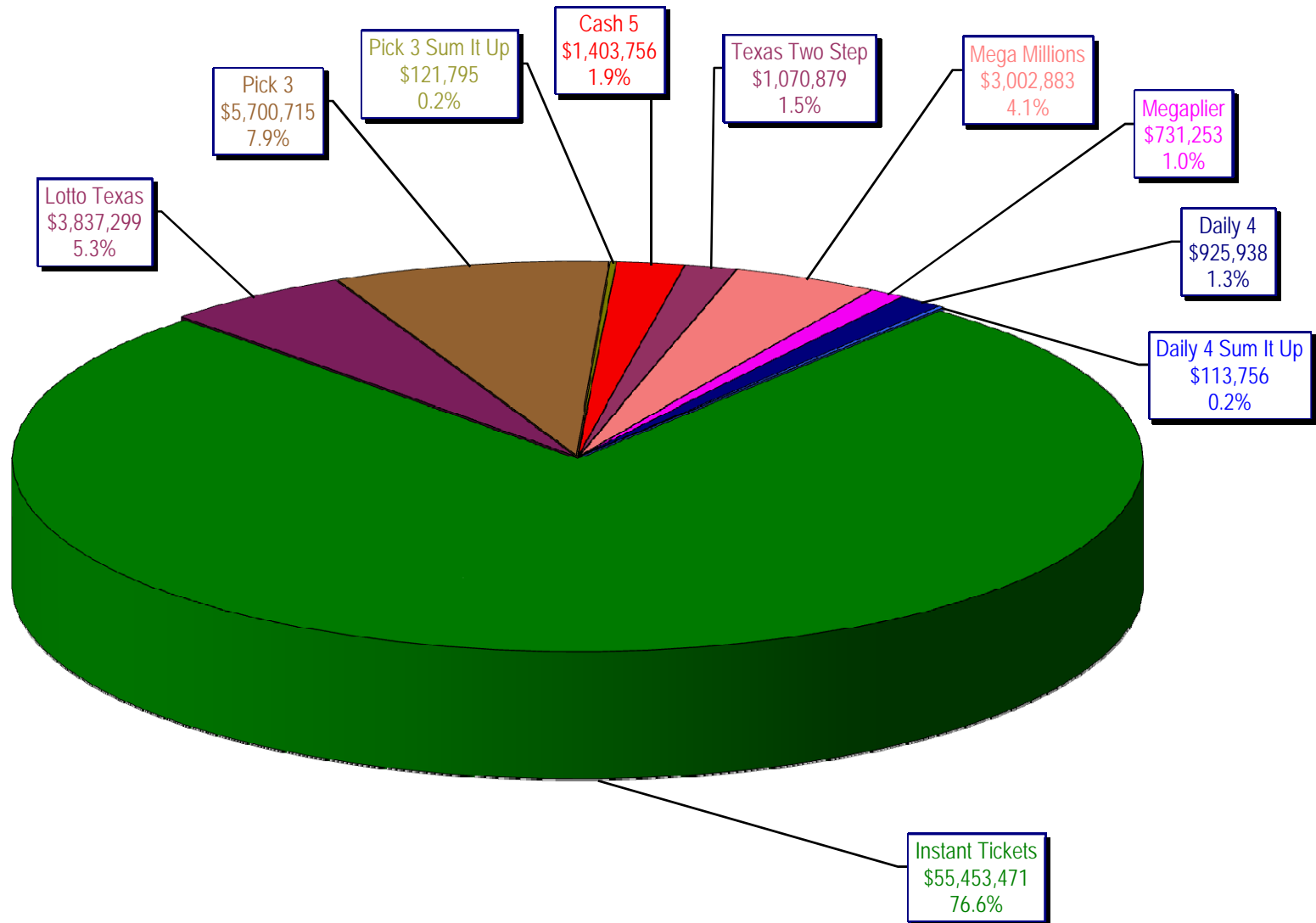
* Before Unclaimed Prizes

** Estimated; depends on # of guaranteed prizes won in Texas

Texas Lottery Commission
Instant Ticket Sales
For the Week Ending 01/31/2009
(Unaudited)



Texas Lottery Commission
All Game Sales
For the Week Ending 01/31/2009
(Unaudited)



Texas Lottery Commission - Weekly Sales Summary for FY 2009 (Unaudited)

Week Ended	Instant Games	New Games & Dates	Lotto Texas	Jackpot W S		Pick 3	Pick 3 Sum It Up	Cash 5	Texas Two Step	Jackpot M/T TH/F		Mega Millions	Jackpot T F		Megaplier	Daily 4	Daily 4 Sum It Up	Total	Per Cap.
9/6/2008	50,944,343.00	1108 (\$2,N), 1088 (\$3, N) - 9/01/08	3,378,718.00	5	6	5,436,414.00	122,123.00	1,396,622.00	890,346.00	350	450	2,445,490.00	12	16	649,090.00	786,482.50	109,834.00	66,159,462.50	2.77
9/13/2008	46,309,551.00	1109 (\$1,N), 1098 (\$5, N) - 9/08/08	3,020,089.00	7	8	4,705,585.50	105,899.00	1,279,412.00	856,199.00	600	200	2,327,214.00	24	12	617,672.00	696,633.00	96,156.50	60,014,411.00	2.51
9/20/2008	42,923,171.00	0	3,054,093.00	9	10	4,121,734.50	90,718.00	1,155,350.00	637,792.00	225	250	1,978,127.00	15	12	540,225.00	627,210.00	86,013.50	55,214,434.00	2.31
9/27/2008	47,042,801.00	1111 (\$2,N), 1099 (\$5, N) - 9/22/08	3,427,671.00	11	12	4,821,563.00	103,189.50	1,288,062.00	834,307.00	275	425	2,322,862.00	16	24	617,085.00	709,741.50	97,858.00	61,265,140.00	2.56
10/4/2008	50,747,162.00	1113 (\$1,N) 9/29/08	3,675,683.00	13	14	5,305,711.00	116,332.50	1,369,040.00	1,074,874.00	525	650	2,671,927.00	32	42	693,845.00	770,782.50	106,277.00	66,531,634.00	2.78
10/11/2008	49,763,789.00	0	3,732,365.00	15	16	5,287,094.00	114,665.50	1,370,334.00	1,305,250.00	800	975	2,306,070.00	12	16	622,120.00	778,204.00	106,395.00	65,386,286.50	2.74
10/18/2008	49,299,053.00	1117 (\$3,N), 1118 (\$20,N) - 10/13/08	3,780,438.00	17	18	5,149,258.00	109,530.00	1,355,601.00	741,849.00	200	200	2,500,644.00	23	32	652,198.00	776,366.00	102,056.00	64,466,993.00	2.70
10/25/2008	49,977,581.00	1119 (\$1,N), 1120 (\$5,N) - 10/20/08	3,210,762.00	4	5	5,099,671.00	107,104.50	1,339,079.00	789,649.00	225	275	2,456,965.00	42	12	641,206.00	778,434.00	102,972.50	64,503,424.00	2.70
11/1/2008	50,346,542.00	1121 (\$2,N), 1122 (\$10,N) - 10/27/08	3,325,641.00	6	7	5,234,124.00	109,983.00	1,339,046.00	946,035.00	375	475	2,347,596.00	16	23	626,235.00	805,572.00	104,612.50	65,185,386.50	2.73
11/8/2008	54,860,087.00	1123 (\$3,N), 1124 (\$7,N) - 11/03/08; 1103 (\$3,N) - 11/05/08; 1063 (\$3,N) - 11/07/08	3,290,417.00	4	5	5,686,701.00	118,495.00	1,397,985.00	1,158,101.00	625	750	2,729,302.50	31	42	692,662.00	871,230.00	112,175.50	70,917,156.00	2.97
11/15/2008	53,484,812.00	1125 (\$1, N), 1126 (\$5,N) - 11/10/08	3,336,934.00	6	7	5,459,984.00	112,884.00	1,366,024.00	766,955.00	200	225	3,102,251.00	51	62	749,736.00	830,957.00	104,094.00	69,314,631.00	2.90
11/22/2008	52,806,511.00	0	3,452,481.00	8	9	5,329,591.00	108,861.50	1,358,271.00	743,950.00	200	200	3,666,517.00	73	86	847,201.00	849,077.50	104,797.50	69,267,258.50	2.90
11/29/2008	52,199,741.00	1127 (\$2,N), 1128 (\$5,N) - 11/24/08	3,585,374.00	10	11	5,340,783.50	111,443.00	1,315,233.00	686,077.00	200	225	4,441,715.00	96	111	968,906.00	845,475.50	102,569.00	69,597,317.00	2.91
12/6/2008	56,731,851.00	0	3,794,991.00	12	13	5,752,593.00	121,663.50	1,416,446.00	780,328.00	250	200	6,238,355.00	128	146	1,270,214.00	881,841.50	107,357.00	77,095,640.00	3.23
12/13/2008	54,109,617.00	1129 (\$1, N) - 12/08/08	3,315,658.00	4	5	5,580,770.00	114,295.50	1,384,858.00	766,893.00	225	250	9,150,536.00	170	207	1,691,121.00	846,176.50	101,919.50	77,061,844.50	3.22
12/20/2008	55,777,328.00	1104 (\$2,N), 1105 (\$5,N), 1106 (\$10,N) - 12/15/08	3,432,340.00	6	7	5,741,120.00	116,075.50	1,401,805.00	741,945.00	200	200	2,736,234.00	12	16	687,875.00	871,579.50	104,543.00	71,610,845.00	3.00
12/27/2008	57,597,885.00	1077 (\$1,N), 1110 (\$1,N) - 12/22/08	3,582,169.00	8	4	5,628,081.50	115,323.00	1,340,590.00	708,906.00	225	250	2,842,167.00	22	29	706,042.00	828,346.00	100,146.00	73,449,655.50	3.07
1/3/2009	57,582,115.00	0	3,784,763.00	5	6	5,690,220.50	120,519.50	1,406,807.00	934,000.00	325	525	3,190,457.00	37	46	780,850.00	885,674.00	106,736.50	74,482,142.50	3.12
1/10/2009	54,250,945.00	1135 (\$2,N), 1136 (\$5,N) - 1/5/09	3,582,400.00	7	8	5,476,890.00	116,674.50	1,403,531.00	1,267,847.00	675	900	2,701,275.00	12	16	681,574.00	868,919.00	104,109.50	70,454,165.00	2.95
1/17/2009	51,625,339.00	1137 (\$1,N), 1138 (\$3,N) - 1/12/09	3,668,302.50	9	10	5,443,159.00	112,605.00	1,387,958.00	778,563.00	200	200	2,683,707.00	22	12	675,416.00	852,987.00	98,907.50	67,326,944.00	2.82
1/24/2009	52,789,573.00	1115 (\$2,N), 1116 (\$5,N) - 1/19/09	3,723,835.50	11	12	5,514,547.50	115,827.50	1,376,695.00	860,483.00	225	325	2,692,611.00	16	21	676,936.00	836,996.00	99,541.00	68,687,045.50	2.87
1/31/2009	55,453,471.00	1080 (\$1,N), 1024 (\$20,R) - 1/26/09; 1062 (\$5,N) - 1/28/09	3,837,299.00	13	14	5,700,714.50	121,794.50	1,403,756.00	1,070,879.00	450	600	3,002,883.00	30	40	731,253.00	925,937.50	113,755.50	72,361,743.00	3.03
weekly change	5.05%		3.05%			3.38%	5.15%	1.97%	24.45%			11.52%			8.02%	10.63%	14.28%	5.35%	
	SALES		SALES			SALES	SALES	SALES	SALES			SALES			SALES	SALES	SALES	SALES	% of Sales
Startup to date	34,621,155,031.00		10,355,979,656.00			3,416,103,991.00	8,968,583.00	2,148,952,697.00	445,552,909.00			996,572,410.50			235,003,962.00	60,120,565.00	10,608,370.00	52,507,152,146.50	100.0%
Calendar Year to date	239,251,356.00		16,610,364.00			24,944,492.00	175,670.50	6,214,243.00	4,393,772.00			12,615,507.00			3,136,147.00	3,912,906.50	467,562.50	311,722,020.50	100.0%
Fiscal Year to date 2009	1,140,569,029.00		76,882,609.00			117,385,038.50	2,482,753.00	29,796,687.00	19,287,191.00			70,433,815.50			16,795,928.00	17,903,593.50	2,269,566.50	1,493,806,211.00	100.0%