



WEEKLY SALES SUMMARY

Unaudited

Week Ending: 02/02/2013

Texas Lottery Commission
Fiscal Year to Date Sales Comparison
Unaudited

Through the week ending 02/02/2013 (23 weeks)

Sales by Game	FY 2011 *	FY 2012 **	FY 2013	\$ Change		% Change	
				FY 2013 to FY 2011	FY 2013 to FY 2012	FY 2013 to FY 2011	FY 2013 to FY 2012
Instants	\$ 1,201,033,387	\$ 1,252,777,509	\$ 1,299,125,901	\$ 98,092,514	\$ 46,348,392	8.2%	3.7%
Lotto Texas	74,561,608	75,530,402	66,615,387	-7,946,221	-8,915,015	-10.7%	-11.8%
Pick 3	117,554,326	114,296,345	112,850,713	-4,703,614	-1,445,633	-4.0%	-1.3%
Pick 3 Sum It Up	2,385,274	2,332,261	2,118,008	-267,266	-214,253	-11.2%	-9.2%
Cash Five	27,882,448	27,906,499	24,084,205	-3,798,243	-3,822,294	-13.6%	-13.7%
Texas Two Step	20,565,536	28,279,935	24,938,304	4,372,768	-3,341,631	21.3%	-11.8%
Mega Millions	84,540,336	65,541,341	45,099,452	-39,440,884	-20,441,889	-46.7%	-31.2%
Megaplier	16,713,740	14,489,760	10,486,318	-6,227,422	-4,003,442	-37.3%	-27.6%
Daily 4	24,332,378	27,053,406	29,942,747	5,610,370	2,889,341	23.1%	10.7%
Daily 4 Sum It Up	1,910,917	1,996,253	1,977,618	66,701	-18,636	3.5%	-0.9%
Powerball	36,145,612	59,799,205	120,578,557	84,432,945	60,779,353	233.6%	101.6%
Power Play	8,752,496	11,812,055	12,183,094	3,430,598	371,040	39.2%	3.1%
All or Nothing	-	-	38,449,126	38,449,126	38,449,126	-	-
Total	\$ <u>1,616,378,057</u>	\$ <u>1,681,814,970</u>	\$ <u>1,788,449,429</u>	\$ <u>172,071,372</u>	\$ <u>106,634,460</u>	10.6%	6.3%

* 3 extra days

** 2 extra days

Texas Lottery Commission
Fiscal Year to Date Cumulative Average Sales Comparison
Unaudited

Through the week ending 02/02/2013 (23 weeks)

Sales by Game	FY 2011	FY 2012	FY 2013
Instant	\$ 7,601,477	\$ 7,979,475	\$ 8,381,457
Lotto Texas	471,909	481,085	429,777
Pick 3	744,015	728,002	728,069
Pick 3 Sum It Up	15,097	14,855	13,665
Cash Five	176,471	177,748	155,382
Texas Two Step	130,162	180,127	160,892
Mega Millions	535,065	417,461	290,964
Megaplier	105,783	92,291	67,654
Daily 4	154,002	172,315	193,179
Daily 4 Sum It Up	12,094	12,715	12,759
Powerball	228,770	380,887	777,926
Power Play	55,396	75,236	78,601
All or Nothing	-	-	261,559 *
Total	\$ <u>10,230,241</u>	\$ <u>10,712,197</u>	\$ <u>11,551,883</u>
	thru 02/05/2011 158 days	thru 02/04/2012 157 days	thru 02/02/2013 155 days * 147 days

Texas Lottery Commission
Fiscal Year Over Year Change in Sales
Unaudited
FY 2013 Compared to FY 2012

Week	FY 2013 Week Ending	INSTANT TICKETS				DRAW GAMES				TOTAL SALES			
		FY 2013	FY 2012	Difference	% change - Cumulative Sales	FY 2013	FY 2012	Difference	% change - Cumulative Sales	FY 2013	FY 2012	Difference	% change - Cumulative Sales
1	9/1/2012**	\$9,611,328	\$25,147,181	(\$15,535,853)	-61.8%	\$3,712,535	\$9,704,561	(\$5,992,026)	-61.7%	\$13,323,863	\$34,851,742	(\$21,527,879)	-61.8%
2	9/8/2012	\$56,941,761	\$50,591,068	\$6,350,693	12.6%	\$19,305,417	\$17,681,853	\$1,623,564	9.2%	\$76,247,178	\$68,272,921	\$7,974,257	11.7%
3	9/15/2012	\$56,302,875	\$49,835,063	\$6,467,812	13.0%	\$20,857,230	\$16,842,326	\$4,014,904	23.8%	\$77,160,105	\$66,677,389	\$10,482,716	15.7%
4	9/22/2012	\$54,974,438	\$49,777,138	\$5,197,300	10.4%	\$20,570,277	\$17,504,800	\$3,065,477	17.5%	\$75,544,715	\$67,281,938	\$8,262,777	12.3%
5	9/29/2012	\$54,606,674	\$51,040,274	\$3,566,400	7.0%	\$20,462,690	\$18,653,100	\$1,809,591	9.7%	\$75,069,364	\$69,693,374	\$5,375,991	7.7%
6	10/6/2012	\$59,223,327	\$53,715,157	\$5,508,170	10.3%	\$19,279,973	\$17,225,680	\$2,054,293	11.9%	\$78,503,300	\$70,940,837	\$7,562,463	10.7%
7	10/13/2012	\$57,075,606	\$51,942,121	\$5,133,485	9.9%	\$18,638,467	\$17,854,980	\$783,487	4.4%	\$75,714,073	\$69,797,101	\$5,916,972	8.5%
8	10/20/2012	\$56,630,134	\$52,837,769	\$3,792,365	7.2%	\$18,998,943	\$19,558,519	(\$559,577)	-2.9%	\$75,629,077	\$72,396,288	\$3,232,789	4.5%
9	10/27/2012	\$55,789,743	\$52,206,644	\$3,583,099	6.9%	\$20,130,190	\$21,504,565	(\$1,374,376)	-6.4%	\$75,919,933	\$73,711,209	\$2,208,724	3.0%
10	11/3/2012	\$58,142,777	\$56,265,310	\$1,877,467	3.3%	\$20,638,008	\$20,870,086	(\$232,079)	-1.1%	\$78,780,785	\$77,135,396	\$1,645,389	2.1%
11	11/10/2012	\$57,484,804	\$55,682,645	\$1,802,159	3.2%	\$20,862,872	\$17,862,404	\$3,000,468	16.8%	\$78,347,676	\$73,545,049	\$4,802,627	6.5%
12	11/17/2012	\$55,805,228	\$54,978,079	\$827,149	1.5%	\$21,660,705	\$17,879,985	\$3,780,721	21.1%	\$77,465,933	\$72,858,064	\$4,607,870	6.3%
13	11/24/2012	\$61,331,977	\$53,942,448	\$7,389,529	13.7%	\$27,172,853	\$16,877,145	\$10,295,708	61.0%	\$88,504,830	\$70,819,593	\$17,685,237	25.0%
14	12/1/2012	\$58,420,598	\$57,153,469	\$1,267,129	2.2%	\$62,797,943	\$18,298,636	\$44,499,307	243.2%	\$121,218,541	\$75,452,105	\$45,766,436	60.7%
15	12/8/2012	\$62,489,745	\$55,318,284	\$7,171,461	13.0%	\$19,630,155	\$19,033,326	\$596,829	3.1%	\$82,119,900	\$74,351,610	\$7,768,290	10.4%
16	12/15/2012	\$59,661,880	\$58,612,629	\$1,049,251	1.8%	\$20,064,982	\$20,045,279	\$19,704	0.1%	\$79,726,862	\$78,657,908	\$1,068,955	1.4%
17	12/22/2012	\$63,556,886	\$60,628,256	\$2,928,630	4.8%	\$19,084,653	\$22,572,986	(\$3,488,333)	-15.5%	\$82,641,539	\$83,201,242	(\$559,703)	-0.7%
18	12/29/2012	\$63,547,886	\$63,065,007	\$482,879	0.8%	\$17,359,874	\$19,948,521	(\$2,588,647)	-13.0%	\$80,907,760	\$83,013,528	(\$2,105,768)	-2.5%
19	1/5/2013	\$60,452,721	\$60,479,896	(\$27,175)	0.0%	\$18,833,047	\$17,331,888	\$1,501,159	8.7%	\$79,285,768	\$77,811,784	\$1,473,984	1.9%
20	1/12/2013	\$58,862,997	\$57,689,526	\$1,173,471	2.0%	\$18,879,167	\$17,568,732	\$1,310,435	7.5%	\$77,742,164	\$75,258,258	\$2,483,906	3.3%
21	1/19/2013	\$58,494,057	\$58,704,854	(\$210,797)	-0.4%	\$19,258,004	\$19,886,540	(\$628,537)	-3.2%	\$77,752,061	\$78,591,394	(\$839,334)	-1.1%
22	1/26/2013	\$57,871,744	\$57,611,325	\$260,419	0.5%	\$20,093,215	\$20,641,697	(\$548,483)	-2.7%	\$77,964,959	\$78,253,022	(\$288,064)	-0.4%
23	2/2/2013	\$61,846,715	\$65,553,366	(\$3,706,651)	-5.7%	\$21,032,335	\$23,689,855	(\$2,657,521)	-11.2%	\$82,879,050	\$89,243,221	(\$6,364,172)	-7.1%
24	2/9/2013		\$75,070,485				\$28,361,583				\$103,432,068		
25	2/16/2013		\$66,679,947				\$19,588,615				\$86,268,562		
26	2/23/2013		\$64,868,899				\$19,965,388				\$84,834,287		
27	3/2/2013		\$67,135,065				\$20,947,181				\$88,082,246		
28	3/9/2013		\$68,299,006				\$22,152,639				\$90,451,645		
29	3/16/2013		\$65,013,692				\$23,351,718				\$88,365,410		
30	3/23/2013		\$64,035,255				\$27,416,609				\$91,451,864		
31	3/30/2013		\$65,135,991				\$84,628,987				\$149,764,978		
32	4/6/2013		\$66,860,957				\$19,899,400				\$86,760,357		
33	4/13/2013		\$64,028,898				\$20,220,141				\$84,249,039		
34	4/20/2013		\$63,623,892				\$20,974,282				\$84,598,174		
35	4/27/2013		\$61,743,623				\$20,267,388				\$82,011,011		
36	5/4/2013		\$64,851,962				\$20,642,982				\$85,494,944		
37	5/11/2013		\$65,472,556				\$19,140,768				\$84,613,324		
38	5/18/2013		\$60,572,658				\$18,342,814				\$78,915,472		
39	5/25/2013		\$58,959,028				\$18,618,060				\$77,577,088		
40	6/1/2013		\$57,409,086				\$19,014,645				\$76,423,731		
41	6/8/2013		\$59,845,545				\$20,527,958				\$80,373,503		
42	6/15/2013		\$57,021,498				\$19,386,186				\$76,407,684		

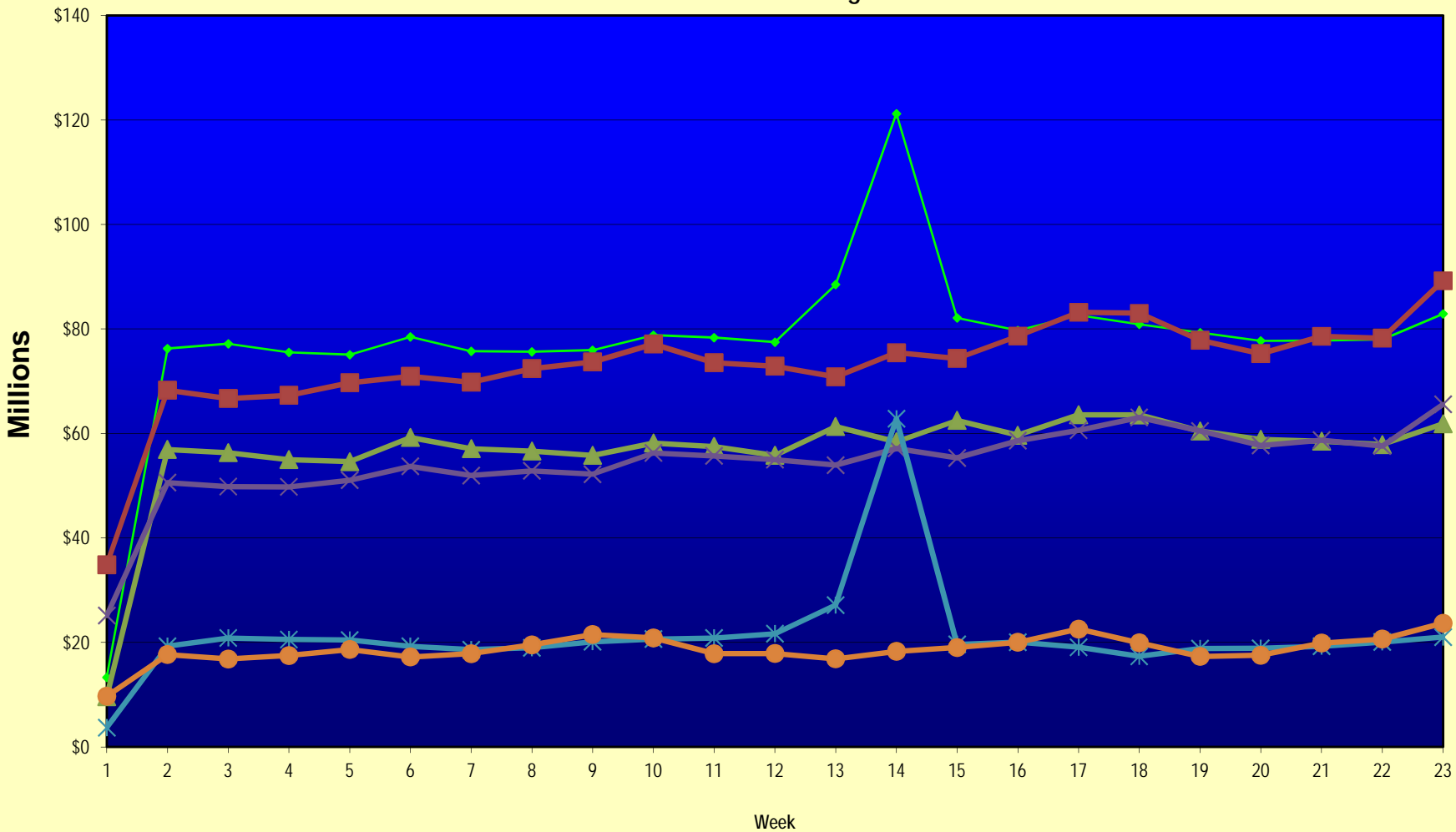
Note: Week 1 is not a full week of sales as this report is prepared on a Fiscal Year basis.

Texas Lottery Commission
Fiscal Year Over Year Change in Sales
Unaudited
FY 2013 Compared to FY 2012

Week	FY 2013 Week Ending	INSTANT TICKETS				DRAW GAMES				TOTAL SALES			
		FY 2013	FY 2012	Difference	% change - Cumulative Sales	FY 2013	FY 2012	Difference	% change - Cumulative Sales	FY 2013	FY 2012	Difference	% change - Cumulative Sales
43	6/22/2013		\$57,892,076				\$17,594,154				\$75,486,230		
44	6/29/2013		\$57,497,435				\$18,153,658				\$75,651,093		
45	7/6/2013		\$60,345,000				\$19,059,152				\$79,404,152		
46	7/13/2013		\$57,683,321				\$18,751,043				\$76,434,364		
47	7/20/2013		\$57,083,343				\$18,769,201				\$75,852,544		
48	7/27/2013		\$54,006,781				\$18,934,103				\$72,940,884		
49	8/3/2013		\$56,557,409				\$20,206,705				\$76,764,114		
50	8/10/2013		\$57,799,452				\$22,832,120				\$80,631,572		
51	8/17/2013		\$54,845,724				\$25,435,624				\$80,281,348		
52	8/24/2013		\$55,661,277				\$17,524,474				\$73,185,751		
	8/31/2013		\$47,363,984				\$14,929,528				\$62,293,512		
Total thru Current Week		\$1,299,125,901	\$1,252,777,509	\$46,348,392	3.7%	\$489,323,528	\$429,037,461	\$60,286,068	14.1%	\$1,788,449,429	\$1,681,814,970	\$106,634,460	6.3%
Fiscal Year Total		\$1,299,125,901	\$3,086,141,354			\$489,323,528	\$1,104,674,559			\$1,788,449,429	\$4,190,815,913		

** FY 2012 includes 3 days; FY 2013 includes 1 day.

Texas Lottery Commission Fiscal Year Over Year Change in Sales



Note: Week 1 is not a full week of sales as this report is prepared on a Fiscal Year basis.

Texas Lottery Commission
Instant Tickets by Price Point
Sales, Prize Expense, Sales Contribution and Payout Percentage With Year Over Year Changes
Unaudited

Fiscal Year	Price Point	# of Active Games	FY Sales	% of Instant Ticket Sales	Year over Year Change in Sales	FY Prize Expense	Year over Year Change in Prize Expense	FY Sales Contribution	Year over Year Change in Contribution	Average Prize Payout %	Year over Year Change in Payout %
2012	\$1.00	28	95,998,052	7.7%		58,837,558		37,160,494		61.3%	0.9%
thru	\$2.00	29	172,769,760	13.8%		112,323,212		60,446,548		65.0%	-0.8%
2/4/2012	\$3.00	15	152,004,495	12.1%		99,667,925		52,336,570		65.6%	0.0%
	\$5.00	36	399,130,640	31.9%		271,622,806		127,507,834		68.1%	0.2%
	\$7.00	4	18,209,982	1.5%		12,382,670		5,827,312		68.0%	0.0%
	\$10.00	15	198,382,850	15.8%		139,669,972		58,712,878		70.4%	-0.9%
	\$20.00	6	170,434,680	13.6%		127,136,558		43,298,122		74.6%	-0.1%
	\$50.00	2	45,847,050	3.7%		35,606,982		10,240,068		77.7%	0.0%
Total		135	\$1,252,777,509			\$857,247,683		\$395,529,826		68.4%	-0.1%
2013	\$1.00	27	81,599,581	6.3%		50,186,113		31,413,468		61.5%	1.4%
thru	\$2.00	30	170,197,736	13.1%		110,644,314		59,553,422		65.0%	-0.1%
2/2/2013	\$3.00	15	161,187,006	12.4%		105,689,732		55,497,274		65.6%	0.0%
	\$5.00	44	399,318,375	30.7%		271,190,762		128,127,613		67.9%	-0.1%
	\$7.00	2	15,952,363	1.2%		10,842,283		5,110,080		68.0%	0.0%
	\$10.00	12	227,297,980	17.5%		160,880,236		66,417,744		70.8%	-0.2%
	\$20.00	8	182,390,760	14.0%		136,538,221		45,852,539		74.9%	0.1%
	\$50.00	3	61,182,100	4.7%		47,501,191		13,680,909		77.6%	0.0%
Total		141	\$1,299,125,901			\$893,472,851		\$405,653,050		68.8%	0.2%
Variance	\$1.00	-1	-14,398,471		-15.0%	-8,651,445	-14.7%	-5,747,026	-15.5%	0.21%	
2013 to	\$2.00	1	-2,572,024		-1.5%	-1,678,898	-1.5%	-893,126	-1.5%	0.00%	
2012	\$3.00	0	9,182,511		6.0%	6,021,807	6.0%	3,160,704	6.0%	0.00%	
	\$5.00	8	187,735		0.0%	-432,044	-0.2%	619,779	0.5%	-0.14%	
	\$7.00	-2	-2,257,619		-12.4%	-1,540,387	-12.4%	-717,232	-12.3%	-0.03%	
	\$10.00	-3	28,915,130		14.6%	21,210,264	15.2%	7,704,866	13.1%	0.38%	
	\$20.00	2	11,956,080		7.0%	9,401,663	7.4%	2,554,417	5.9%	0.26%	
	\$50.00	1	15,335,050		33.4%	11,894,209	33.4%	3,440,841	33.6%	-0.03%	
Total		6	\$46,348,392		3.7%	\$36,225,168	4.2%	\$10,123,224	2.6%	0.35%	

Notes - Instant Ticket Variances

Texas Lottery Commission
Instant Tickets by Price Point
Sales, Prize Expense, Sales Contribution and Payout Percentage With Year Over Year Changes
 Unaudited

			FY 2013		FY 2012	Difference
Sales	\$1 - \$7	1	\$828,255,061		\$838,112,929	-\$9,857,868
Prize Exp.	\$1 - \$7	1	\$548,553,203		\$554,834,171	-\$6,280,968
Sales Cont.	\$1 - \$7	1	\$279,701,858		\$283,278,758	-\$3,576,900
Prize Exp. %	\$1 - \$7	1	66.2%		66.2%	0.0%
			FY 2013		FY 2012	Difference
Sales	\$10 - \$50	2	\$470,870,840		\$414,664,580	\$56,206,260
Prize Exp.	\$10 - \$50	2	\$344,919,648		\$302,413,512	\$42,506,136
Sales Cont.	\$10 - \$50	1	\$125,951,192		\$112,251,068	\$13,700,124
Prize Exp. %	\$10 - \$50	2	73.3%		72.9%	0.3%
			FY 2013		FY 2012	Difference
Sales	Instant		\$1,299,125,901		\$1,252,777,509	\$46,348,392
Prize Exp.	Instant		\$893,472,851		\$857,247,683	\$36,225,168
Sales Cont.	Instant		\$405,653,050		\$395,529,826	\$10,123,224
Prize Exp. %	Instant		68.8%		68.4%	0.3%

			FY 2013		FY 2012	Difference
Sales	\$1 - \$10		\$1,055,553,041		\$1,036,495,779	\$19,057,262
Prize Exp.	\$1 - \$10		\$709,433,439		\$694,504,142	\$14,929,296
Sales Cont.	\$1 - \$10		\$346,119,602		\$341,991,637	\$4,127,966
Prize Exp. %	\$1 - \$10		67.2%		67.0%	0.2%
			FY 2013		FY 2012	Difference
Sales	\$20 - \$50		\$243,572,860		\$216,281,730	\$27,291,130
Prize Exp.	\$20 - \$50		\$184,039,412		\$162,743,541	\$21,295,872
Sales Cont.	\$20 - \$50		\$59,533,448		\$53,538,189	\$5,995,258
Prize Exp. %	\$20 - \$50		75.6%		75.2%	0.3%
			FY 2013		FY 2012	Difference
Sales	Instant		\$1,299,125,901		\$1,252,777,509	\$46,348,392
Prize Exp.	Instant		\$893,472,851		\$857,247,683	\$36,225,168
Sales Cont.	Instant		\$405,653,050		\$395,529,826	\$10,123,224
Prize Exp. %	Instant		68.8%		68.4%	0.3%

Texas Lottery Commission
Weekly Sales Summary
& Comparison to Previous Week
 Unaudited

	Week Ending 02/02/2013		Week Ending 01/26/2013			
	<u>THIS WEEK</u>	% of Sales	<u>LAST WEEK</u>	% of Sales	<u>\$ change</u>	<u>% change</u>
Total Sales	<u>\$82,879,050</u>		<u>\$77,964,959</u>		<u>\$4,914,091</u>	6.30%
Instant Tickets	<u>\$61,846,715</u>	74.6%	<u>\$57,871,744</u>	74.2%	<u>\$3,974,971</u>	6.87%
Lotto	\$2,754,143	3.3%	\$2,733,016	3.5%	\$21,127	0.77%
Pick 3	\$5,220,197	6.3%	\$4,936,726	6.3%	\$283,472	5.74%
Pick 3 Sum It Up	\$96,971	0.1%	\$91,918	0.1%	\$5,053	5.50%
Cash Five	\$1,066,170	1.3%	\$1,047,379	1.3%	\$18,791	1.79%
Texas Two Step	\$1,109,445	1.3%	\$1,178,148	1.5%	-\$68,703	-5.83%
Mega Millions	\$1,731,470	2.1%	\$2,367,780	3.0%	-\$636,310	-26.87%
Megaplier	\$423,745	0.5%	\$526,051	0.7%	-\$102,306	-19.45%
Daily 4	\$1,460,770	1.8%	\$1,401,635	1.8%	\$59,135	4.22%
Daily 4 Sum It Up	\$96,289	0.1%	\$87,842	0.1%	\$8,447	9.62%
Powerball	\$5,037,974	6.1%	\$3,808,150	4.9%	\$1,229,824	32.29%
Power Play	\$570,151	0.7%	\$454,194	0.6%	\$115,957	25.53%
All or Nothing	\$1,465,010	1.8%	\$1,460,376	1.9%	\$4,634	0.32%
Total Draw Game Sales	<u>\$21,032,335</u>		<u>\$20,093,215</u>		<u>\$939,120</u>	4.67%

Totals may not sum due to rounding.

Texas Lottery Commission
Weekly Sales Summary
Unaudited

INSTANT TICKETS
TOP TEN SELLING GAMES

For the Week Ending: 02/02/13

Rank	Price Point	Game	Sales (Millions)
1	\$ 10	10X MEGA MONEY	\$ 5.050
2	\$ 20	CASH EXCITEMENT	\$ 3.286
3	\$ 5	INSTANT RICHES	\$ 3.193
4	\$ 20	\$500 MILLION EXTREME CASH BLAST	\$ 2.384
5	\$ 5	\$100,000 WINNINGS	\$ 2.313
6	\$ 3	BONUS CASHWORD	\$ 2.183
7	\$ 5	GOLDEN SPADES	\$ 2.060
8	\$ 50	\$7,500,000 FORTUNE	\$ 2.034
9	\$ 10	\$200 MILLION CASH SPECTACULAR	\$ 2.013
10	\$ 20	\$500,000,000 FRENZY	\$ 1.755

Texas Lottery Commission
Prize Payout Tracking Report
Unaudited

Through Week Ending 02/02/13

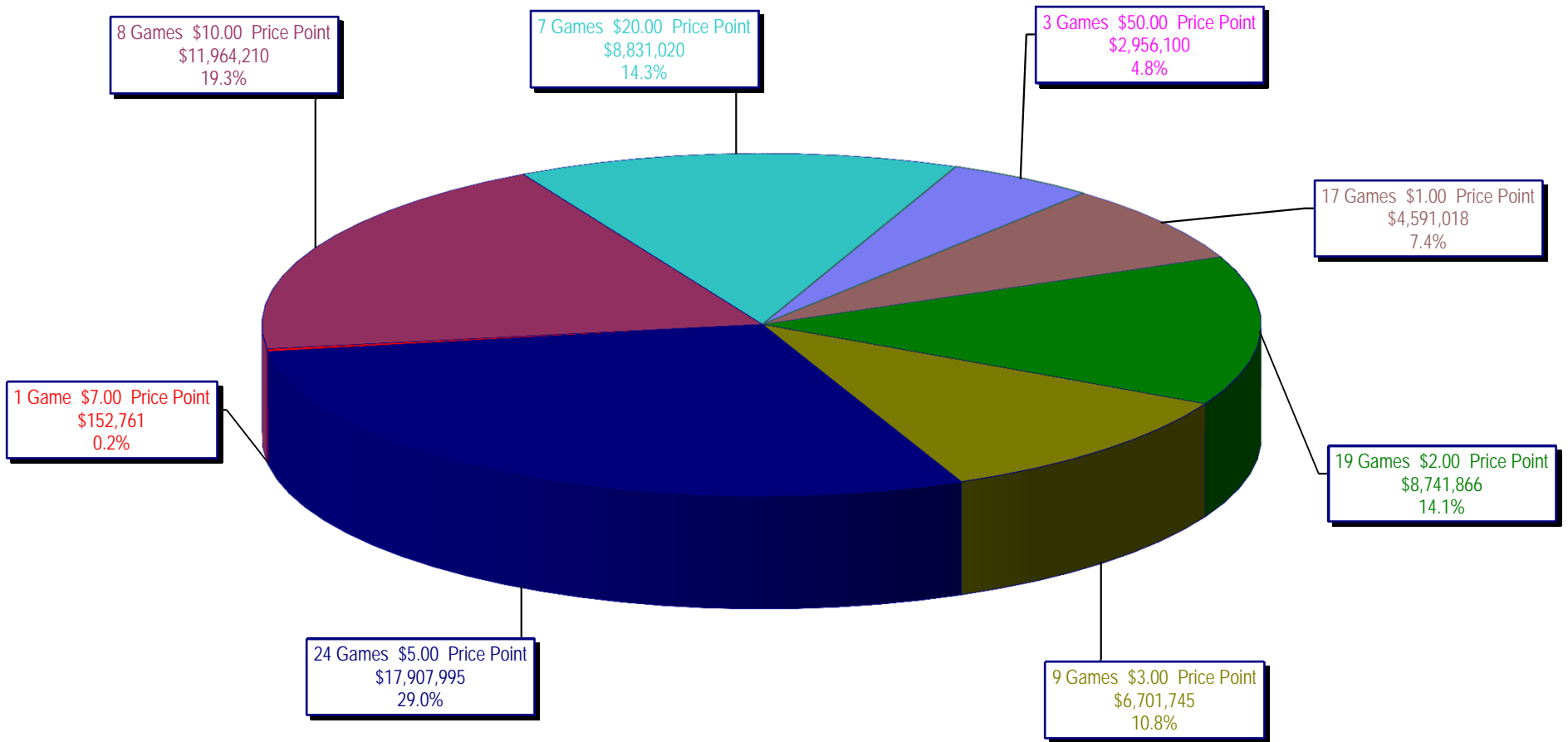
Draw Game Sales

		FY Sales Through Week Ending 2/2/2013		FY Prize Expense Through Week Ending 2/2/2013	Actual* Prize Payout	Base Payout (Prize Pool)
Lotto	\$	66,615,387	\$	45,049,791	67.63%	50.00%
Pick 3		112,850,713		58,847,560	52.15%	50.00%
Pick 3 Sum It Up		2,118,008		1,054,713	49.80%	50.00%
Cash Five		24,084,205		12,043,772	50.01%	50.00%
Texas Two Step		24,938,304		12,539,265	50.28%	50.00%
Mega Millions		45,099,452		25,849,019	57.32%	50.00%**
Megaplier		10,486,318		4,920,912	46.93%	N/A
Daily 4		29,942,747		15,221,050	50.83%	50.00%
Daily 4 Sum It Up		1,977,618		851,915	43.08%	50.00%
Powerball		120,578,557		63,781,628	52.90%	50.00%**
Power Play		12,183,094		7,004,329	57.49%	N/A
All or Nothing		38,449,126		22,668,692	58.96%	50.00%
Totals	\$	489,323,528	\$	269,832,646	55.14%	

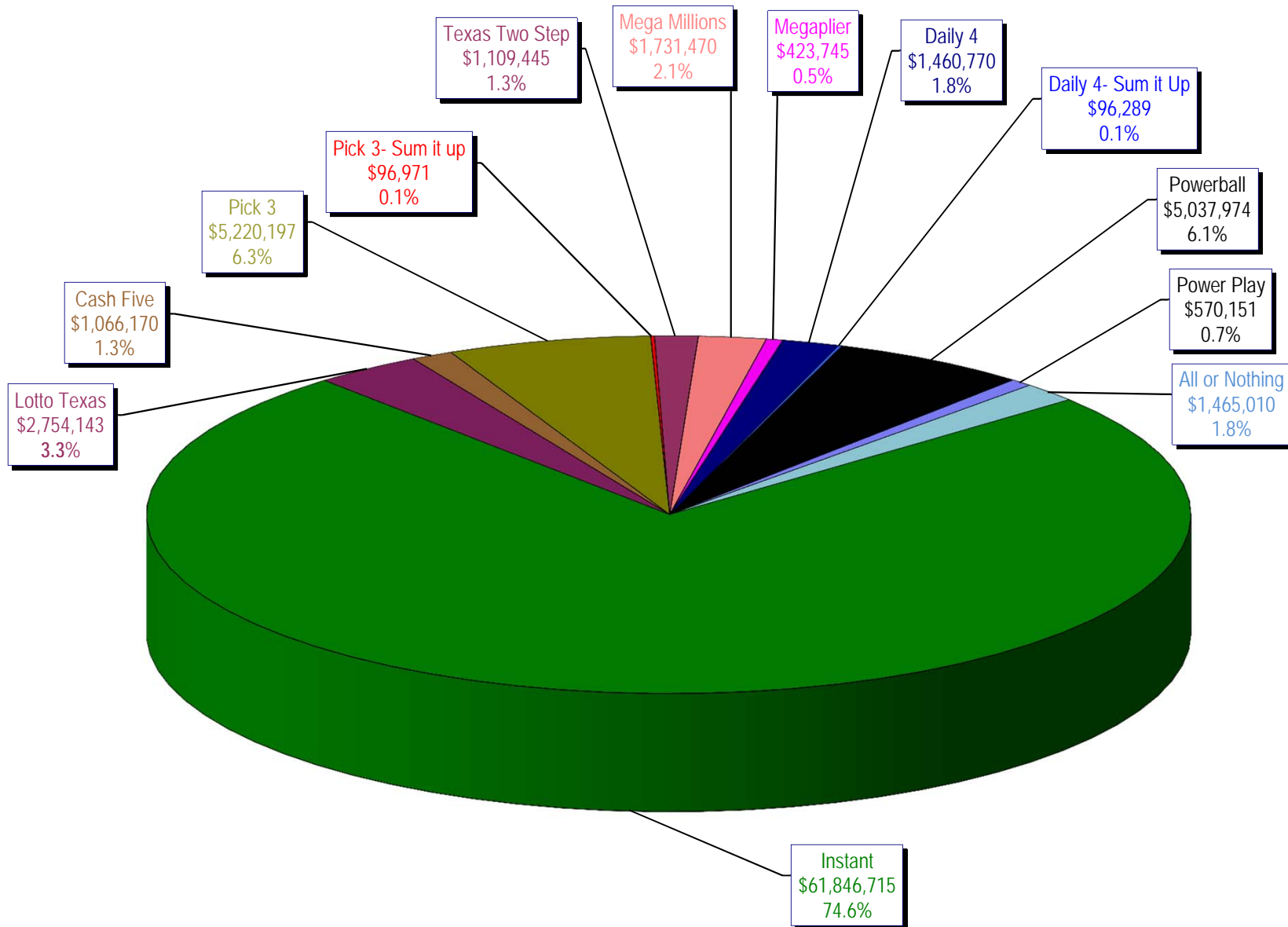
* Before Unclaimed Prizes

** Estimated; depends on # of guaranteed prizes won in Texas

Texas Lottery Commission
Instant Ticket Sales
For the Week Ending 02/02/13
(Unaudited)



**Texas Lottery Commission
All Game Sales
For the Week Ending 02/02/13
(Unaudited)**



Texas Lottery Commission - Weekly Sales Summary for FY 2013 (Unaudited)

Week Ended	Instant Games	New Games & Dates	Lotto Texas	Jackpot W S	Pick 3	Pick 3 Sum It Up	Cash Five	Texas Two Step	Jackpot M TH	Mega Millions	Jackpot T F	Megaplier	Daily 4	Daily 4 Sum It Up	Powerball	Jackpot W S	Power Play	All or Nothing	Total	Per Cap.
9/1/2012	56,975,312	1446 (\$1, N); 1444 (\$2, N) - 08/27/12	2,972,415	12 13	4,967,337	105,441	1,198,597	1,455,689	500 675	2,769,421	73 83	612,072	1,419,103	97,265	2,680,694	70 80	364,030		75,617,375	2.95
9/8/2012	56,941,761	1440 (\$2, N); 1458 (\$3, N); 1459 (\$5, N) - 09/03/12	3,005,564	14 15	5,112,132	106,959	1,185,494	1,179,003	875 200	3,140,536	93 105	665,392	1,412,279	99,861	3,002,910	90 100	395,287		76,247,178	2.97
9/15/2012	56,302,875	1452 (\$3, N) - 09/10/12	2,999,894	16 17	4,785,209	95,720	1,118,519	894,412	225 200	2,684,227	120 12	580,869	1,290,478	90,795	3,373,296	110 125	417,470	2,526,342	77,160,105	3.01
9/22/2012	54,974,438	1460 (\$1, N); 1461 (\$5, N) - 09/17/12	2,986,898	18 19	4,611,684	89,173	1,091,440	986,264	225 325	1,874,336	15 12	452,082	1,258,191	86,390	4,122,790	149 174	479,344	2,531,686	75,544,715	2.94
9/29/2012	54,606,674	1462 (\$2, N); 1472 (\$10, N) - 09/24/12	3,047,519	20 21	4,708,250	90,752	1,077,739	1,313,257	475 625	1,884,366	14 21	452,334	1,278,847	87,211	3,779,359	200 40	445,091	2,297,966	75,069,364	2.92
10/6/2012	59,223,327	1464 (\$5, N) - 10/01/12	3,164,231	22 23	4,947,571	96,251	1,121,146	1,188,386	800 200	2,055,918	28 36	482,303	1,310,612	89,270	2,266,428	50 40	312,877	2,244,980	78,503,300	3.06
10/13/2012	57,075,606	1465 (\$1, N); 1466 (\$20, N) - 10/08/2012	3,133,742	24 25	4,793,793	89,663	1,074,687	865,146	225 200	2,163,099	45 53	492,614	1,261,858	84,585	2,241,120	50 60	309,684	2,128,476	75,714,073	2.95
10/20/2012	56,630,134	1467 (\$1, N); 1468 (\$5, N) - 10/15/12	3,172,820	26 27	4,959,071	88,413	1,074,980	970,100	225 325	1,984,966	61 12	466,730	1,296,602	84,868	2,447,518	70 80	328,436	2,124,439	75,629,077	2.95
10/27/2012	55,789,743	1469 (\$2, N); 1470 (\$10, N) - 10/22/2012	3,204,694	28 29	5,550,567	96,242	1,063,201	1,226,578	450 600	1,778,725	13 21	430,528	1,381,019	91,618	2,914,062	90 100	371,273	2,021,684	75,919,933	2.96
11/3/2012	58,142,777	1503 (\$5, N) - 10/29/2012	3,392,650	30 31	5,501,964	101,742	1,078,593	860,073	200 225	1,950,117	27 32	462,385	1,393,099	93,773	3,466,242	110 124	424,170	1,913,200	78,780,785	3.07
11/10/2012	57,484,804	1475 (\$1, N); 1476 (\$3, N) - 11/05/2012	3,061,999	32 4	5,468,924	100,767	1,083,928	837,666	200 200	1,783,099	12 13	430,343	1,402,194	94,451	4,246,246	143 168	491,538	1,861,718	78,347,676	3.05
11/17/2012	55,805,228	1477 (\$2, N); 1478 (\$5, N) - 11/12/2012	2,599,190	5 6	5,248,059	91,989	1,059,723	920,319	225 300	1,841,571	19 26	440,783	1,345,121	88,391	5,638,425	185 214	615,323	1,771,812	77,465,933	3.02
11/24/2012	61,331,977	1394 (\$50, N) - 11/19/2012	2,768,876	7 8	5,086,879	91,409	1,021,878	883,407	425 200	2,003,365	33 41	472,723	1,300,693	85,037	10,768,045	250 325	1,053,006	1,637,536	88,504,830	3.45
12/1/2012	58,420,598	0	3,304,053	9 10	5,123,778	97,511	1,086,916	925,805	225 275	2,358,380	49 12	533,175	1,319,684	92,240	43,264,700	550 40	2,894,606	1,797,096	121,218,541	4.72
12/8/2012	62,489,745	1479 (\$1, N); 1485 (\$5, N) - 12/03/12	2,971,837	11 12	5,374,747	101,479	1,129,990	1,359,739	425 575	1,861,503	13 20	445,171	1,391,477	94,879	2,832,293	50 40	362,145	1,704,896	82,119,900	3.20
12/15/2012	59,661,880	0	3,087,087	13 14	5,221,374	98,173	1,104,769	1,928,422	775 1,000	1,933,357	27 35	456,193	1,398,647	88,811	2,808,938	50 40	364,704	1,574,508	79,726,862	3.11
12/22/2012	63,556,886	1481 (\$1, N); 1482 (\$2, N); 1483 (\$5, N) - 12/17/12	3,076,409	15 16	5,170,946	94,116	1,108,894	1,415,548	1,250 200	1,774,922	12 12	431,471	1,385,861	87,012	2,658,349	50 40	349,278	1,531,847	82,641,539	3.22
12/29/2012	63,547,886	0	2,869,329	17 18	4,868,470	90,224	1,041,264	922,869	200 225	1,670,747	18 25	400,587	1,289,758	79,651	2,413,294	50 40	324,222	1,389,460	80,907,760	3.15
1/5/2013	60,452,721	1484 (\$5, N) - 12/31/12	2,962,822	19 20	5,157,831	97,210	1,098,429	1,363,512	350 500	1,865,613	30 39	443,570	1,396,145	87,787	2,524,666	50 60	339,142	1,496,322	79,285,768	3.09
1/12/2013	58,862,997	1386 (\$2, N); 1536 (\$10, N) - 01/07/2013	2,588,023	4 5	4,974,232	92,872	1,079,444	1,622,926	700 900	2,036,427	47 55	471,998	1,345,510	81,625	2,755,940	70 80	349,383	1,480,788	77,742,164	3.03
1/19/2013	58,494,057	01/14/2013; 1538 (\$3, N) - 01/17/2013;	2,670,967	6 7	5,115,846	99,182	1,069,099	906,490	200 225	2,214,850	62 70	498,541	1,374,543	87,921	3,323,356	90 100	408,226	1,488,984	77,752,061	3.03
1/26/2013	57,871,744	0	2,733,016	8 9	4,936,726	91,918	1,047,379	1,178,148	325 475	2,367,780	80 89	526,051	1,401,635	87,842	3,808,150	110 130	454,194	1,460,376	77,964,959	3.04
2/2/2013	61,846,715	1489 (\$2, N); 1486 (\$20, N) - 01/28/2013	2,754,143	10 11	5,220,197	96,971	1,066,170	1,109,445	650 200	1,731,470	12 13	423,745	1,460,770	96,289	5,037,974	151 176	570,151	1,465,010	82,879,050	3.23
weekly change	6.9%		0.8%		5.7%	5.5%	1.8%	-5.8%		-26.9%		-19.4%	4.2%	9.6%	32.3%		25.5%	0.3%	6.3%	
	SALES		SALES		SALES	SALES	SALES	SALES		SALES		SALES	SALES	SALES	SALES		SALES		SALES	% of Sales
Calendar Year to date	3,432,528,713		177,361,224		298,333,321	6,006,942	68,152,324	69,418,126		203,223,894		39,995,666	77,583,431	5,332,444	251,041,649		29,181,193	38,449,126	4,696,608,052	100.0%
Fiscal Year to date 2013	1,299,125,901		66,615,387		112,850,713	2,118,008	24,084,205	24,938,304		45,099,452		10,486,318	29,942,747	1,977,618	120,578,557		12,183,094	38,449,126	1,788,449,429	100.0%