



WEEKLY SALES SUMMARY

Unaudited

[Week Ending: 02/04/2012](#)

Texas Lottery Commission
Fiscal Year to Date Sales Comparison
Unaudited

Through the week ending 02/04/12 (23 weeks)

Sales by Game	FY 2010 *	FY 2011 **	FY 2012	\$ Change		% Change	
				FY 2012 to FY 2010	FY 2012 to FY 2011 to	FY 2012 to FY 2010	FY 2012 to FY 2011
Instants	\$ 1,202,335,315	\$ 1,201,033,387	\$ 1,252,777,509	\$ 50,442,194	\$ 51,744,122	4.2%	4.3%
Lotto Texas	117,437,371	74,561,608	75,530,402	-41,906,969	968,794	-35.7%	1.3%
Pick 3	116,633,411	117,554,326	114,296,345	-2,337,066	-3,257,981	-2.0%	-2.8%
Pick 3 Sum It Up	2,308,872	2,385,274	2,332,261	23,389	-53,013	1.0%	-2.2%
Cash Five	29,369,613	27,882,448	27,906,499	-1,463,114	24,051	-5.0%	0.1%
Texas Two Step	19,673,321	20,565,536	28,279,935	8,606,614	7,714,399	43.7%	37.5%
Mega Millions	83,652,015	84,540,336	65,541,341	-18,110,674	-18,998,995	-21.7%	-22.5%
Megaplier	18,662,315	16,713,740	14,489,760	-4,172,555	-2,223,980	-22.4%	-13.3%
Daily 4	22,586,999	24,332,378	27,053,406	4,466,407	2,721,029	19.8%	11.2%
Daily 4 Sum It Up	2,157,412	1,910,917	1,996,253	-161,159	85,336	-7.5%	4.5%
Powerball	2,649,068	36,145,612	59,799,205	57,150,137	23,653,593	-	-
Power Play	537,205	8,752,496	11,812,055	11,274,850	3,059,559	-	-
Total	\$ 1,618,002,916	\$ 1,616,378,057	\$ 1,681,814,970	\$ 63,812,054	\$ 65,436,913	3.9%	4.0%

* 2 extra days

** 1 extra day

Texas Lottery Commission
Fiscal Year to Date Cumulative Average Sales Comparison
Unaudited

Through the week ending 02/04/2012 (23 weeks)

Sales by Game	FY 2010	FY 2011	FY 2012
Instant	\$ 7,561,857	\$ 7,601,477	\$ 7,979,475
Lotto Texas	738,600	471,909	481,085
Pick 3	733,543	744,015	728,002
Pick 3 Sum It Up	14,521	15,097	14,855
Cash Five	184,715	176,471	177,748
Texas Two Step	123,732	130,162	180,127
Mega Millions	526,113	535,065	417,461
Megaplier	117,373	105,783	92,291
Daily 4	142,057	154,002	172,315
Daily 4 Sum It Up	13,569	12,094	12,715
Powerball	378,438 *	228,770	380,887
Power Play	76,744 *	55,396	75,236
Total	\$ 10,611,261	\$ 10,230,241	\$ 10,712,197

thru 02/06/2010

159 days

thru 02/05/2011

158 days

thru 02/04/2012

157 days

* 7 days

Texas Lottery Commission
Fiscal Year Over Year Change in Sales
Unaudited
FY 2012 Compared to FY 2011

Week	FY 2012 Week Ending	INSTANT TICKETS				ON-LINE GAMES				TOTAL SALES			
		FY 2012	FY 2011	Difference	% change - Cumulative Sales	FY 2012	FY 2011	Difference	% change - Cumulative Sales	FY 2012	FY 2011	Difference	% change - Cumulative Sales
1	9/3/2011**	\$25,147,181	\$31,659,033	(\$6,511,852)	-20.6%	\$9,704,561	\$11,430,717	(\$1,726,156)	-15.1%	\$34,851,742	\$43,089,750	(\$8,238,008)	-19.1%
2	9/10/2011	\$50,591,068	\$48,912,598	\$1,678,470	3.4%	\$17,681,853	\$16,398,160	\$1,283,693	7.8%	\$68,272,921	\$65,310,758	\$2,962,163	4.5%
3	9/17/2011	\$49,835,063	\$48,988,241	\$846,822	1.7%	\$16,842,326	\$17,166,827	(\$324,501)	-1.9%	\$66,677,389	\$66,155,068	\$522,321	0.8%
4	9/24/2011	\$49,777,138	\$48,471,310	\$1,305,828	2.7%	\$17,504,800	\$15,623,813	\$1,880,987	12.0%	\$67,281,938	\$64,095,123	\$3,186,815	5.0%
5	10/1/2011	\$51,040,274	\$50,145,138	\$895,136	1.8%	\$18,653,100	\$16,453,939	\$2,199,161	13.4%	\$69,693,374	\$66,599,077	\$3,094,297	4.6%
6	10/8/2011	\$53,715,157	\$50,918,591	\$2,796,566	5.5%	\$17,225,680	\$16,974,963	\$250,717	1.5%	\$70,940,837	\$67,893,554	\$3,047,283	4.5%
7	10/15/2011	\$51,942,121	\$49,096,011	\$2,846,110	5.8%	\$17,854,980	\$16,661,904	\$1,193,077	7.2%	\$69,797,101	\$65,757,915	\$4,039,187	6.1%
8	10/22/2011	\$52,837,769	\$50,158,946	\$2,678,823	5.3%	\$19,558,519	\$17,374,460	\$2,184,060	12.6%	\$72,396,288	\$67,533,406	\$4,862,883	7.2%
9	10/29/2011	\$52,206,644	\$49,775,287	\$2,431,357	4.9%	\$21,504,565	\$18,402,209	\$3,102,356	16.9%	\$73,711,209	\$68,177,496	\$5,533,713	8.1%
10	11/5/2011	\$56,265,310	\$53,337,848	\$2,927,462	5.5%	\$20,870,086	\$17,321,908	\$3,548,179	20.5%	\$77,135,396	\$70,659,756	\$6,475,641	9.2%
11	11/12/2011	\$55,682,645	\$52,285,479	\$3,397,166	6.5%	\$17,862,404	\$16,388,690	\$1,473,714	9.0%	\$73,545,049	\$68,674,169	\$4,870,880	7.1%
12	11/19/2011	\$54,978,079	\$52,424,036	\$2,554,043	4.9%	\$17,879,985	\$16,138,022	\$1,741,963	10.8%	\$72,858,064	\$68,562,058	\$4,296,006	6.3%
13	11/26/2011	\$53,942,448	\$51,262,518	\$2,679,930	5.2%	\$16,877,145	\$15,967,075	\$910,070	5.7%	\$70,819,593	\$67,229,593	\$3,590,000	5.3%
14	12/3/2011	\$57,153,469	\$56,385,259	\$768,210	1.4%	\$18,298,636	\$17,553,175	\$745,461	4.2%	\$75,452,105	\$73,938,434	\$1,513,671	2.0%
15	12/10/2011	\$55,318,284	\$56,540,048	(\$1,221,764)	-2.2%	\$19,033,326	\$17,703,352	\$1,329,975	7.5%	\$74,351,610	\$74,243,400	\$108,211	0.1%
16	12/17/2011	\$58,612,629	\$57,699,991	\$912,638	1.6%	\$20,045,279	\$18,465,282	\$1,579,997	8.6%	\$78,657,908	\$76,165,273	\$2,492,635	3.3%
17	12/24/2011	\$60,628,256	\$59,800,480	\$827,776	1.4%	\$22,572,986	\$19,635,771	\$2,937,215	15.0%	\$83,201,242	\$79,436,251	\$3,764,991	4.7%
18	12/31/2011	\$63,065,007	\$61,423,121	\$1,641,886	2.7%	\$19,948,521	\$26,122,257	(\$6,173,736)	-23.6%	\$83,013,528	\$87,545,378	(\$4,531,850)	-5.2%
19	1/7/2012	\$60,479,896	\$60,976,653	(\$496,757)	-0.8%	\$17,331,888	\$33,521,570	(\$16,189,682)	-48.3%	\$77,811,784	\$94,498,223	(\$16,686,439)	-17.7%
20	1/14/2012	\$57,689,526	\$50,099,433	\$7,590,093	15.2%	\$17,568,732	\$17,114,637	\$454,096	2.7%	\$75,258,258	\$67,214,070	\$8,044,189	12.0%
21	1/21/2012	\$58,704,854	\$53,143,646	\$5,561,208	10.5%	\$19,886,540	\$18,091,208	\$1,795,332	9.9%	\$78,591,394	\$71,234,854	\$7,356,540	10.3%
22	1/28/2012	\$57,611,325	\$54,096,128	\$3,515,197	6.5%	\$20,641,697	\$17,446,156	\$3,195,542	18.3%	\$78,253,022	\$71,542,284	\$6,710,739	9.4%
23	2/4/2012	\$65,553,366	\$53,433,592	\$12,119,774	22.7%	\$23,689,855	\$17,388,581	\$6,301,274	36.2%	\$89,243,221	\$70,822,173	\$18,421,048	26.0%
24	2/11/2012		\$60,277,094				\$18,233,038				\$78,510,132		
25	2/18/2012		\$61,536,763				\$19,387,518				\$80,924,281		
26	2/25/2012		\$59,046,203				\$20,054,404				\$79,100,607		
27	3/3/2012		\$60,537,060				\$19,478,807				\$80,015,867		
28	3/10/2012		\$59,997,361				\$19,601,658				\$79,599,019		
29	3/17/2012		\$57,835,554				\$21,189,563				\$79,025,117		
30	3/24/2012		\$57,911,940				\$29,729,651				\$87,641,591		
31	3/31/2012		\$60,407,139				\$19,519,264				\$79,926,403		
32	4/7/2012		\$60,704,285				\$19,455,317				\$80,159,602		
33	4/14/2012		\$57,663,398				\$17,866,867				\$75,530,265		
34	4/21/2012		\$56,740,216				\$17,429,326				\$74,169,542		
35	4/28/2012		\$58,042,011				\$17,104,548				\$75,146,559		
36	5/5/2012		\$66,509,159				\$17,744,833				\$84,253,992		
37	5/12/2012		\$53,769,716				\$17,783,942				\$71,553,658		
38	5/19/2012		\$53,704,228				\$18,623,882				\$72,328,110		
39	5/26/2012		\$52,310,134				\$19,115,921				\$71,426,055		
40	6/2/2012		\$53,256,725				\$18,462,603				\$71,719,328		
41	6/9/2012		\$54,293,614				\$17,213,019				\$71,506,633		
42	6/16/2012		\$52,688,230				\$17,534,413				\$70,222,643		

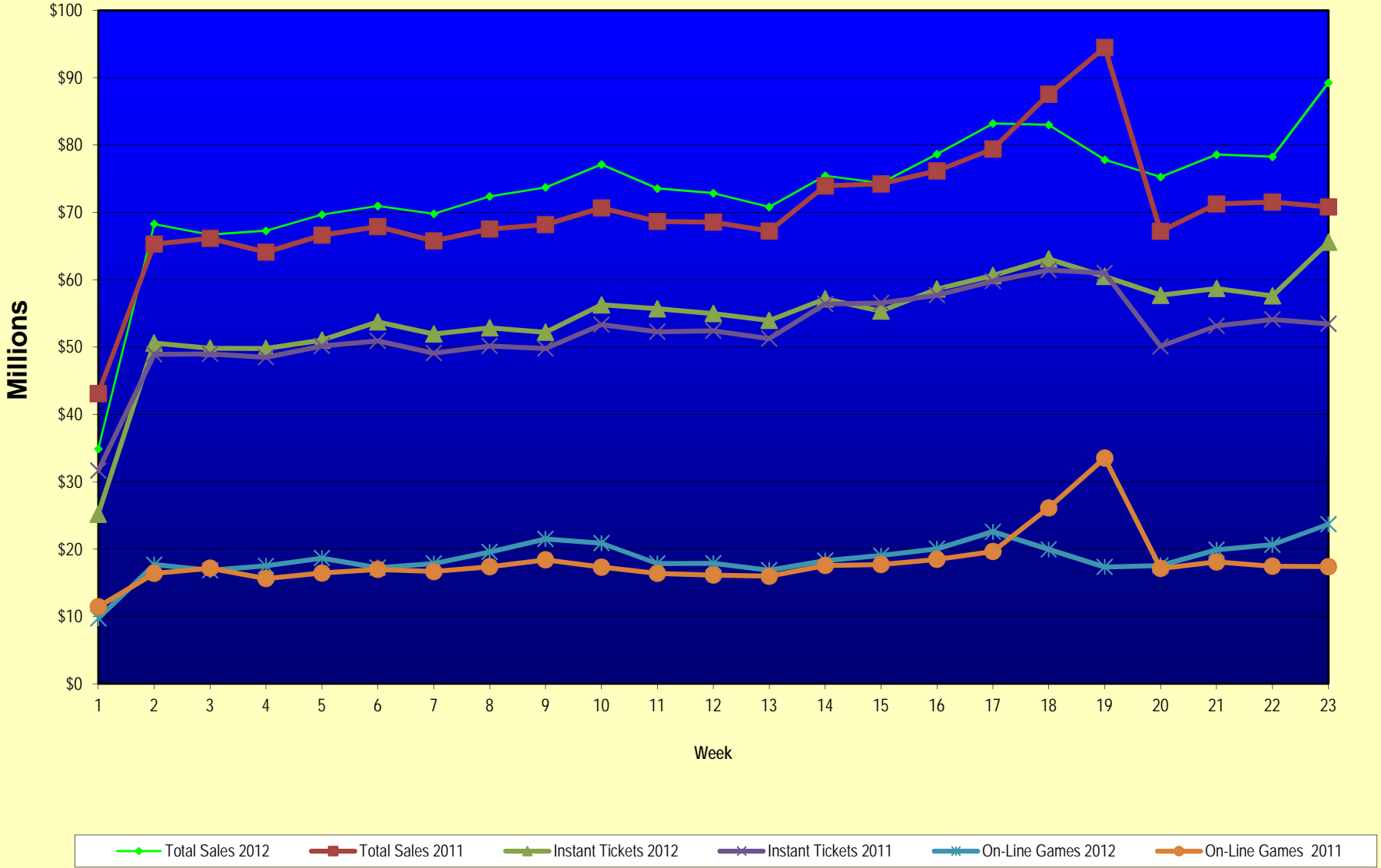
Note: Week 1 is not a full week of sales as this report is prepared on a Fiscal Year basis.

Texas Lottery Commission
Fiscal Year Over Year Change in Sales
Unaudited
FY 2012 Compared to FY 2011

Week	FY 2012 Week Ending	INSTANT TICKETS				ON-LINE GAMES				TOTAL SALES			
		FY 2012	FY 2011	Difference	% change - Cumulative Sales	FY 2012	FY 2011	Difference	% change - Cumulative Sales	FY 2012	FY 2011	Difference	% change - Cumulative Sales
43	6/23/2012		\$53,174,595				\$17,086,937				\$70,261,532		
44	6/30/2012		\$53,687,509				\$18,406,785				\$72,094,294		
45	7/7/2012		\$53,054,685				\$16,211,989				\$69,266,674		
46	7/14/2012		\$51,161,290				\$16,945,733				\$68,107,023		
47	7/21/2012		\$50,807,750				\$17,362,213				\$68,169,963		
48	7/28/2012		\$51,277,179				\$18,870,764				\$70,147,943		
49	8/4/2012		\$53,320,489				\$20,922,034				\$74,242,523		
50	8/11/2012		\$50,914,022				\$19,467,124				\$70,381,146		
51	8/18/2012		\$49,905,898				\$17,419,045				\$67,324,943		
52	8/25/2012		\$49,424,242				\$16,837,474				\$66,261,716		
	8/31/2012		\$27,274,804				\$8,600,118				\$35,874,922		
Total thru Current Week		\$1,252,777,509	\$1,201,033,387	\$51,744,122	4.3%	\$429,037,461	\$415,344,670	\$13,692,791	3.3%	\$1,681,814,970	\$1,616,378,057	\$65,436,913	4.0%
Fiscal Year Total		\$1,252,777,509	\$2,842,266,680			\$429,037,461	\$969,003,455			\$1,681,814,970	\$3,811,270,135		

** FY 2011 includes 4 days; FY 2012 includes 3 days

Texas Lottery Commission Fiscal Year Over Year Change in Sales



Note: Week 1 is not a full week of sales as this report is prepared on a Fiscal Year basis.

Texas Lottery Commission
Instant Tickets by Price Point
Sales, Prize Expense, Sales Contribution and Payout Percentage With Year Over Year Changes
Unaudited

Fiscal Year	Price Point	# of Active Games	FY Sales	% of Instant Ticket Sales	Year over Year Change in Sales	FY Prize Expense	Year over Year Change in Prize Expense	FY Sales Contribution	Year over Year Change in Contribution	Average Prize Payout %	Year over Year Change in Payout %
2011	\$1.00	28	90,189,212	7.5%		55,510,877		34,678,335		61.5%	2.4%
thru	\$2.00	27	171,149,736	14.3%		112,252,563		58,897,173		65.6%	0.7%
2/5/2011	\$3.00	17	146,111,822	12.2%		95,862,422		50,249,400		65.6%	0.0%
	\$5.00	38	382,474,930	31.8%		260,358,558		122,116,372		68.1%	0.1%
	\$7.00	7	53,368,217	4.4%		36,279,058		17,089,159		68.0%	0.0%
	\$10.00	13	164,312,160	13.7%		116,332,935		47,979,225		70.8%	1.2%
	\$20.00	5	152,194,360	12.7%		112,922,263		39,272,097		74.2%	1.4%
	\$50.00	2	41,232,950	3.4%		32,013,637		9,219,313		77.6%	4.2%
Total		137	\$1,201,033,387			\$821,532,313		\$379,501,074		68.4%	1.0%
2012	\$1.00	28	95,998,052	7.7%		58,837,558		37,160,494		61.3%	0.9%
thru	\$2.00	29	172,769,760	13.8%		112,323,212		60,446,548		65.0%	-0.8%
2/4/2012	\$3.00	15	152,004,495	12.1%		99,667,925		52,336,570		65.6%	0.0%
	\$5.00	36	399,130,640	31.9%		271,622,806		127,507,834		68.1%	0.2%
	\$7.00	4	18,209,982	1.5%		12,382,670		5,827,312		68.0%	0.0%
	\$10.00	15	198,382,850	15.8%		139,669,972		58,712,878		70.4%	-0.9%
	\$20.00	6	170,434,680	13.6%		127,136,558		43,298,122		74.6%	-0.1%
	\$50.00	2	45,847,050	3.7%		35,606,982		10,240,068		77.7%	0.0%
Total		135	\$1,252,777,509			\$857,247,683		\$395,529,826		68.4%	-0.1%
Variance	\$1.00	0	5,808,840		6.4%	3,326,681	6.0%	2,482,159	7.2%	-0.26%	
2012 to	\$2.00	2	1,620,024		0.9%	70,650	0.1%	1,549,375	2.6%	-0.57%	
2011	\$3.00	-2	5,892,673		4.0%	3,805,503	4.0%	2,087,170	4.2%	-0.04%	
	\$5.00	-2	16,655,710		4.4%	11,264,248	4.3%	5,391,462	4.4%	-0.02%	
	\$7.00	-3	-35,158,235		-65.9%	-23,896,388	-65.9%	-11,261,847	-65.9%	0.02%	
	\$10.00	2	34,070,690		20.7%	23,337,036	20.1%	10,733,654	22.4%	-0.40%	
	\$20.00	1	18,240,320		12.0%	14,214,295	12.6%	4,026,025	10.3%	0.40%	
	\$50.00	0	4,614,100		11.2%	3,593,345	11.2%	1,020,755	11.1%	0.02%	
Total		-2	\$51,744,122		4.3%	\$35,715,370	4.3%	\$16,028,752	4.2%	0.03%	

Notes - Instant Ticket Variances

Texas Lottery Commission
Instant Tickets by Price Point
Sales, Prize Expense, Sales Contribution and Payout Percentage With Year Over Year Changes
 Unaudited

		FY 2012		FY 2011		Difference
Sales	\$1 - \$7	\$838,112,929		\$843,293,917		-\$5,180,988
Prize Exp.	\$1 - \$7	\$554,834,171		\$560,263,477		-\$5,429,306
Sales Cont.	\$1 - \$7	\$283,278,758		\$283,030,440		\$248,318
Prize Exp. %	\$1 - \$7	66.2%		66.4%		-0.2%
		FY 2012		FY 2011		Difference
Sales	\$10 - \$50	\$414,664,580		\$357,739,470		\$56,925,110
Prize Exp.	\$10 - \$50	\$302,413,512		\$261,268,836		\$41,144,677
Sales Cont.	\$10 - \$50	\$112,251,068		\$96,470,634		\$15,780,433
Prize Exp. %	\$10 - \$50	72.9%		73.0%		-0.1%
		FY 2012		FY 2011		Difference
Sales	Instant	\$1,252,777,509		\$1,201,033,387		\$51,744,122
Prize Exp.	Instant	\$857,247,683		\$821,532,313		\$35,715,370
Sales Cont.	Instant	\$395,529,826		\$379,501,074		\$16,028,752
Prize Exp. %	Instant	68.4%		68.4%		0.0%

		FY 2012		FY 2011		Difference
Sales	\$1 - \$10	\$1,036,495,779		\$1,007,606,077		\$28,889,702
Prize Exp.	\$1 - \$10	\$694,504,142		\$676,596,412		\$17,907,730
Sales Cont.	\$1 - \$10	\$341,991,637		\$331,009,665		\$10,981,972
Prize Exp. %	\$1 - \$10	67.0%		67.1%		-0.1%
		FY 2012		FY 2011		Difference
Sales	\$20 - \$50	\$216,281,730		\$193,427,310		\$22,854,420
Prize Exp.	\$20 - \$50	\$162,743,541		\$144,935,900		\$17,807,640
Sales Cont.	\$20 - \$50	\$53,538,189		\$48,491,410		\$5,046,780
Prize Exp. %	\$20 - \$50	75.2%		74.9%		0.3%
		FY 2012		FY 2011		Difference
Sales	Instant	\$1,252,777,509		\$1,201,033,387		\$51,744,122
Prize Exp.	Instant	\$857,247,683		\$821,532,313		\$35,715,370
Sales Cont.	Instant	\$395,529,826		\$379,501,074		\$16,028,752
Prize Exp. %	Instant	68.4%		68.4%		0.0%

Texas Lottery Commission
Weekly Sales Summary
& Comparison to Previous Week
 Unaudited

	Week Ending 02/04/2012		Week Ending 01/28/2012			
	<u>THIS WEEK</u>	% of Sales	<u>LAST WEEK</u>	% of Sales	<u>\$ change</u>	<u>% change</u>
Total Sales	<u>\$89,243,221</u>		<u>\$78,253,022</u>		<u>\$10,990,199</u>	14.04%
Instant Tickets	<u>\$65,553,366</u>	73.5%	<u>\$57,611,325</u>	73.6%	<u>\$7,942,041</u>	13.79%
Lotto	\$3,526,781	4.0%	\$3,295,592	4.2%	\$231,189	7.02%
Pick 3	\$5,493,300	6.2%	\$4,996,799	6.4%	\$496,501	9.94%
Pick 3 Sum It Up	\$112,992	0.1%	\$103,779	0.1%	\$9,214	8.88%
Cash Five	\$1,316,899	1.5%	\$1,241,568	1.6%	\$75,331	6.07%
Texas Two Step	\$2,230,312	2.5%	\$1,940,577	2.5%	\$289,735	14.93%
Mega Millions	\$2,212,907	2.5%	\$2,426,609	3.1%	-\$213,702	-8.81%
Megaplier	\$525,610	0.6%	\$544,967	0.7%	-\$19,357	-3.55%
Daily 4	\$1,315,424	1.5%	\$1,197,885	1.5%	\$117,540	9.81%
Daily 4 Sum It Up	\$96,711	0.1%	\$85,833	0.1%	\$10,878	12.67%
Powerball	\$6,186,774	6.9%	\$4,311,550	5.5%	\$1,875,224	43.49%
Power Play	\$672,146	0.8%	\$496,540	0.6%	\$175,606	35.37%
Total Online Sales	<u>\$23,689,855</u>		<u>\$20,641,697</u>		<u>\$3,048,158</u>	14.77%

* Totals may not sum due to rounding.

Texas Lottery Commission
Weekly Sales Summary
Unaudited

INSTANT TICKETS
TOP TEN SELLING GAMES

For the Week Ending : 02/04/2012

Rank	Price Point	Game	Sales (Millions)
1	\$ 10	BIG MONEY	\$ 3.989
2	\$ 5	CHOCOLATE	\$ 3.831
3	\$ 20	\$500,000,000 FRENZY	\$ 3.315
4	\$ 20	MAXIMUM MILLIONS	\$ 3.217
5	\$ 50	CASINO ACTION	\$ 3.131
6	\$ 5	MONEY MULTIPLIER	\$ 2.383
7	\$ 3	BONUS CASHWORD	\$ 2.303
8	\$ 20	\$500,000,000 BLOCKBUSTER	\$ 2.148
9	\$ 5	GROOVY CASH	\$ 2.112
10	\$ 3	LOTERIA	\$ 2.054

Texas Lottery Commission
Prize Payout Tracking Report
Unaudited

Through Week Ending 02/04/2012

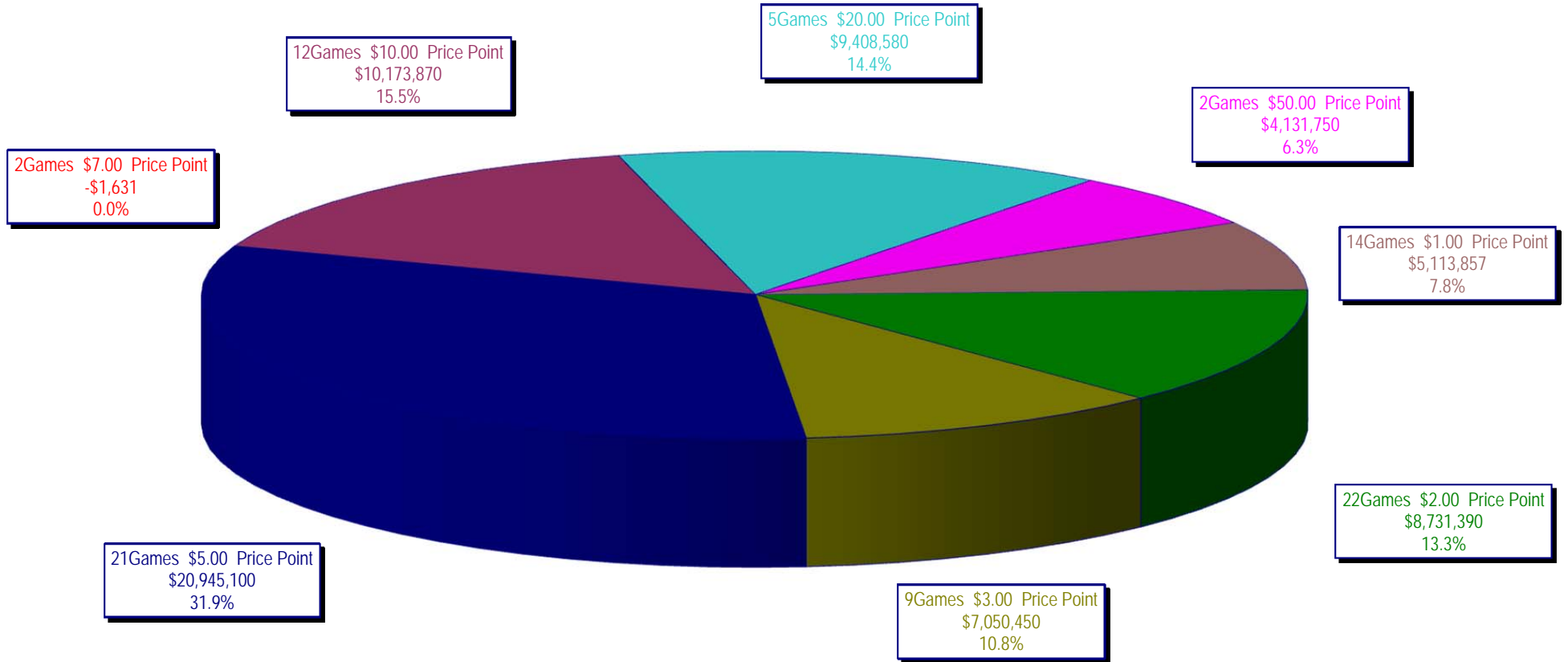
On-Line Sales

		FY Sales Through Week Ending 2/4/2012		FY Prize Expense Through Week Ending 2/4/2012	Actual* Prize Payout	Base Payout (Prize Pool)
Lotto	\$	75,530,402	\$	45,296,413	59.97%	50.00%
Pick 3		114,296,345		52,374,840	45.82%	50.00%
Pick 3 Sum It Up		2,332,261		1,105,069	47.38%	50.00%
Cash Five		27,906,499		14,509,645	51.99%	50.00%
Texas Two Step		28,279,935		14,094,005	49.84%	50.00%
Mega Millions		65,541,341		32,268,128	49.23%	50.00%**
Megaplier		14,489,760		7,410,573	51.14%	N/A
Daily 4		27,053,406		12,324,475	45.56%	50.00%
Daily 4 Sum It Up		1,996,253		804,343	40.29%	50.00%
Powerball		59,799,205		28,789,106	48.14%	50.00%**
Power Play		11,812,055		5,990,874	50.72%	N/A
Totals	\$	429,037,461	\$	214,967,470	50.10%	

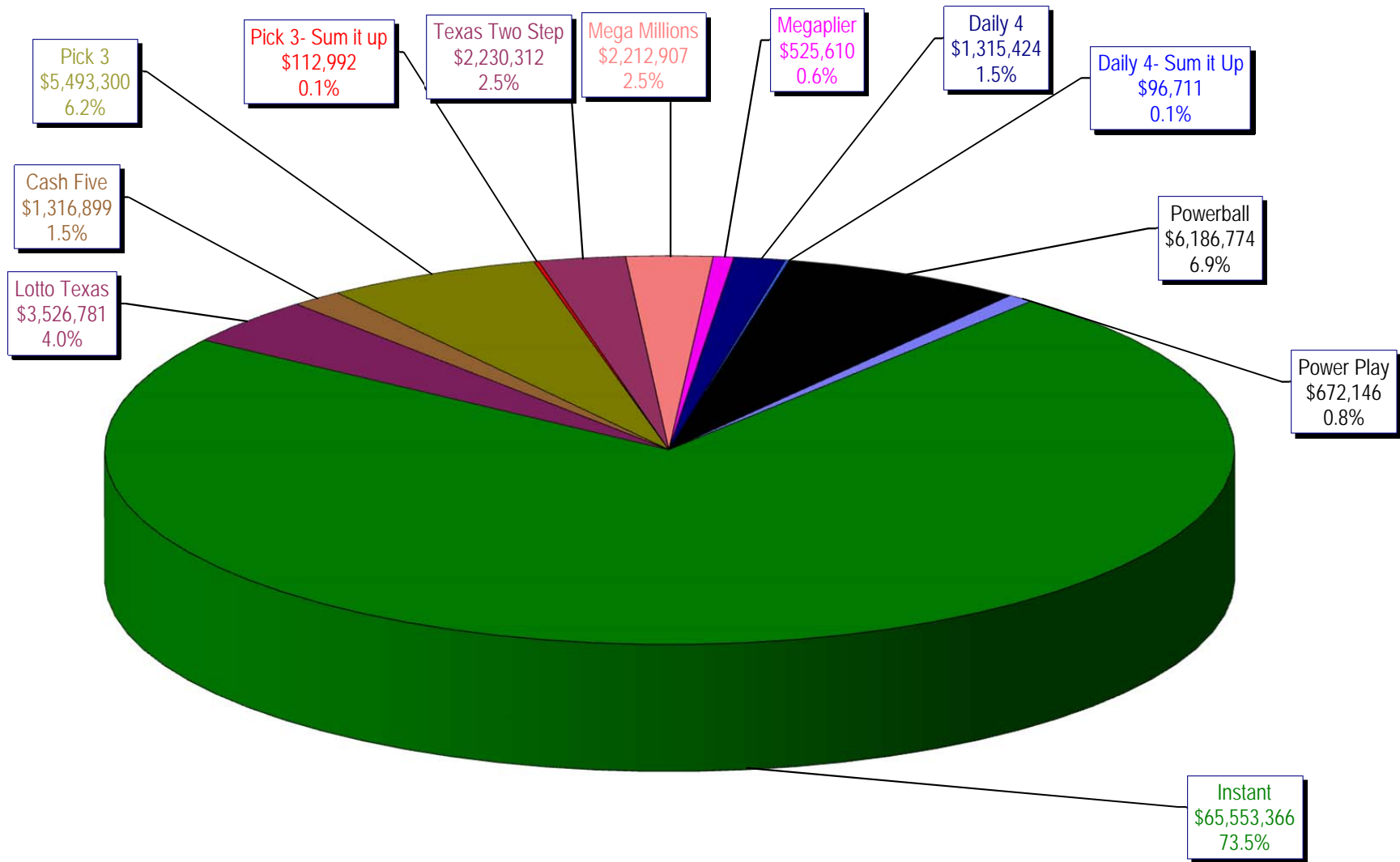
* Before Unclaimed Prizes

** Estimated; depends on # of guaranteed prizes won in Texas

Texas Lottery Commission
Instant Ticket Sales
For the Week Ending 02/04/12
(Unaudited)



**Texas Lottery Commission
All Game Sales
For the Week Ending 02/04/12
(Unaudited)**



Texas Lottery Commission - Weekly Sales Summary for FY 2012 (Unaudited)

Week Ended	Instant Games	New Games & Dates	Lotto Texas	Jackpot W	Jackpot S	Pick 3	Pick 3 Sum It Up	Cash Five	Texas Two Step	Jackpot M	Jackpot TH	Mega Millions	Jackpot T	Jackpot F	Megaplier	Daily 4	Daily 4 Sum It Up	Powerball	Jackpot W	Jackpot S	Power Play	Total	Per Cap.
9/3/2011	52,421,985	1340 (\$1,N); 1310 (\$2, N) - 08/29/11	3,710,974	23	24	5,228,940	100,997	1,239,134	989,988	225	300	2,248,664	21	29	539,246	1,221,178	93,318	2,401,555	75	91	530,686	70,726,664	2.81
9/10/2011	50,591,068	1360 (\$3, N) - 09/05/11	3,329,350	25	4	5,103,026	99,259	1,198,563	935,771	450	200	2,387,766	37	44	557,225	1,180,505	88,443	2,295,315	107	20	506,631	68,272,921	2.71
9/17/2011	49,835,063	0	3,031,798	5	6	4,953,079	100,990	1,210,562	961,592	225	300	2,801,526	54	65	626,459	1,125,230	83,532	1,560,522	25	20	387,037	66,677,389	2.64
9/24/2011	49,777,138	1362(\$1, N); 1363(5,N); 1364(\$5,N) - 09/19/11	3,083,973	7	8	4,819,453	97,999	1,200,444	1,283,472	450	600	3,206,022	75	86	692,909	1,092,294	82,198	1,561,655	25	30	384,383	67,281,938	2.67
10/1/2011	51,040,274	1365(\$2,N) - 09/26/11	3,196,730	9	10	4,846,896	97,026	1,215,715	1,146,613	800	200	4,033,330	96	113	830,660	1,096,271	83,993	1,693,809	37	47	412,058	69,693,374	2.76
10/8/2011	53,715,157	1366(\$1,N) - 10/03/11	3,231,892	11	12	5,064,771	102,919	1,252,733	1,004,251	225	300	2,176,684	12	14	527,777	1,188,636	92,825	2,103,034	58	71	480,159	70,940,837	2.81
10/15/2011	51,942,121	1367 (\$7, N) - 10/10/11	3,230,925	13	14	4,776,985	99,008	1,214,385	1,337,436	450	625	2,260,036	22	30	542,787	1,132,415	84,772	2,613,215	86	105	563,017	69,797,101	2.77
10/22/2011	52,837,769	1369 (\$1, N); 1370 (\$5, N) - 10/17/11	3,250,317	15	16	4,784,201	98,306	1,202,768	1,887,302	825	1,050	2,386,255	39	48	561,705	1,130,353	83,722	3,477,867	124	148	695,724	72,396,288	2.87
10/29/2011	52,206,644	1371 (\$2, N) - 10/24/11	3,302,201	17	18	4,685,786	95,887	1,186,987	2,055,399	1,300	1,550	2,592,752	57	67	596,631	1,107,441	82,921	4,895,300	173	203	903,261	73,711,209	2.92
11/5/2011	56,265,310	1373 (\$10, N) - 10/31/11	3,570,825	19	20	5,165,835	105,793	1,240,514	910,036	200	200	2,497,308	78	12	583,481	1,222,706	92,619	4,617,172	245	20	863,799	77,135,396	3.06
11/12/2011	55,682,645	1375 (\$3, N); 1374 (\$1, N) - 11/07/11	3,673,137	21	22	5,298,645	109,575	1,268,630	961,349	225	200	2,362,698	15	22	552,133	1,235,272	92,025	1,861,697	25	35	447,243	73,545,049	2.92
11/19/2011	54,978,079	1376(\$2, N); 1377 (\$5, N) - 11/14/11	3,575,231	23	24	5,216,095	106,956	1,246,366	1,059,355	225	325	2,300,050	30	40	550,825	1,224,365	89,978	2,033,222	46	60	477,542	72,858,064	2.89
11/26/2011	53,942,448	1372 (\$5, N) - 11/21/11	3,499,908	25	26	4,943,420	100,352	1,179,174	998,175	500	200	2,377,399	47	55	555,760	1,215,090	90,416	1,527,546	20	25	389,905	70,819,593	2.81
12/3/2011	57,153,469	0	3,744,456	27	28	5,267,602	108,544	1,264,649	938,225	225	200	2,830,996	64	75	636,924	1,278,857	95,379	1,708,763	31	40	424,242	75,452,105	2.99
12/10/2011	55,318,284	1378 (\$1, N); 1322 (\$5, N) - 12/5/11; 1389 (\$1, N) - 12/6/11	3,666,072	29	30	5,168,509	106,265	1,243,957	1,030,979	225	325	3,462,326	87	100	736,281	1,235,834	89,131	1,850,570	52	67	443,403	74,351,610	2.95
12/17/2011	58,612,629	1383 (\$3,N) - 12/12/11	2,963,151	4	5	5,096,413	103,606	1,257,263	1,339,991	475	650	4,412,520	116	135	882,759	1,240,640	89,229	2,163,468	78	91	496,239	78,657,908	3.12
12/24/2011	60,628,256	1379 (\$1, N); 1317 (\$2, N); 1380 (\$5, N) - 12/19/11	3,265,301	6	7	5,257,800	105,568	1,269,335	943,509	200	225	5,729,832	152	173	1,095,360	1,263,815	88,757	2,933,837	104	125	619,872	83,201,242	3.30
12/31/2011	63,065,007	0	3,368,593	8	9	5,211,663	107,395	1,275,257	1,200,536	325	450	4,358,985	206	12	878,865	1,244,035	88,079	1,788,226	20	25	426,888	83,013,528	3.29
1/7/2012	60,479,896	1381 (\$5,N); 1277 (\$50,N) - 1/3/12; 1429 (\$5,N); 1401 (\$10, N) - 1/4/12	3,193,532	10	11	5,246,112	108,060	1,281,653	1,135,472	625	200	2,298,815	15	25	550,191	1,240,736	90,116	1,763,484	30	44	423,718	77,811,784	3.09
1/14/2012	57,689,526	1382 (\$2,N); 1232 (\$10, N) - 1/9/12	3,259,338	12	13	5,061,130	103,687	1,270,289	1,059,875	225	350	2,542,675	33	42	587,013	1,229,792	87,637	1,921,683	54	66	445,614	75,258,258	2.98
1/21/2012	58,704,854	1384 (\$1,N) 1385 (\$5,N) - 1/16/12	3,310,397	14	15	5,033,947	104,874	1,252,621	1,422,729	500	650	2,696,266	50	60	594,142	1,204,955	88,136	3,611,989	80	100	566,485	78,591,394	3.12
1/28/2012	57,611,325	0	3,295,592	16	17	4,996,799	103,779	1,241,568	1,940,577	875	1,100	2,426,609	71	12	544,967	1,197,885	85,833	4,311,550	120	146	496,540	78,253,022	3.10
2/4/2012	65,553,366	1434 (\$2, N) 1142 (\$20, N) - 01/30/12	3,526,781	18	19	5,493,300	112,992	1,316,899	2,230,312	1,350	1,650	2,212,907	15	23	525,610	1,315,424	96,711	6,186,774	170	200	672,146	89,243,221	3.54
weekly change	13.8%		7.0%			9.9%	8.9%	6.1%	14.9%			-8.8%			-3.6%	9.8%	12.7%	43.5%			35.4%	14.0%	
	SALES		SALES			SALES	SALES	SALES	SALES			SALES			SALES	SALES	SALES	SALES			SALES	SALES	% of Sales
Startup to date	43,128,135,711		10,983,536,461			4,241,656,666	25,635,593	2,348,815,160	606,114,402			1,550,973,066			354,624,931	228,056,095	24,965,693	216,191,089			48,075,400	63,964,914,237	100.0%
Calendar Year to date	300,038,967		16,585,640			25,831,287	533,391	6,363,030	7,788,965			12,177,272			2,801,923	6,188,792	448,431	17,795,480			2,604,503	399,157,679	100.0%
Fiscal Year to date 2012	1,252,777,509		75,530,402			114,296,345	2,332,261	27,906,499	28,279,935			65,541,341			14,489,760	27,053,406	1,996,253	59,799,205			11,812,055	1,681,814,970	100.0%