



*WEEKLY SALES SUMMARY*

Unaudited

**Week Ending: 02/07/2009**

Texas Lottery Commission  
Fiscal Year to Date Sales Comparison  
Unaudited

Through the week ending 02/07/2009 (23 weeks)

Sales by Game	FY 2007 *	FY 2008 **	FY 2009	\$ Change		% Change	
				FY 2009 to FY 2007	FY 2009 to FY 2008	FY 2009 to FY 2007	FY 2009 to FY 2008
Instant	\$ 1,257,332,977	\$ 1,249,197,882	\$ 1,202,816,740	\$ -54,516,237	\$ -46,381,142	-4.3%	-3.7%
Lotto Texas	95,797,536	94,475,628	80,974,726	-14,822,810	-13,500,902	-15.5%	-14.3%
Pick 3	139,200,366	126,076,743	123,721,756	-15,478,611	-2,354,988	-11.1%	-1.9%
Pick 3 Sum It Up	-	2,425,856	2,617,296	2,617,296	191,441	-	7.9%
Cash 5	39,050,130	34,287,146	31,278,499	-7,771,631	-3,008,647	-19.9%	-8.8%
Texas Two Step	23,814,538	18,125,901	20,129,937	-3,684,601	2,004,036	-15.5%	11.1%
Mega Millions	65,138,078	67,217,725	73,942,848	8,804,770	6,725,123	13.5%	10.0%
Megaplier	16,013,133	16,545,947	17,625,478	1,612,345	1,079,531	10.1%	6.5%
Daily 4	-	18,348,233	18,911,123	18,911,123	562,890	-	3.1%
Daily 4 Sum It Up	-	4,534,517	2,389,834	2,389,834	-2,144,683	-	-47.3%
<b>Total</b>	<b>\$ 1,636,346,758</b>	<b>\$ 1,631,235,577</b>	<b>\$ 1,574,408,236</b>	<b>\$ -61,938,523</b>	<b>\$ -56,827,341</b>	<b>-3.8%</b>	<b>-3.5%</b>

\* 3 extra days in 2007 \*\* 2 extra days in 2008

Texas Lottery Commission  
Fiscal Year Over Year Change in Sales  
Unaudited  
FY 2009 Compared to FY 2008

Week	FY 2009 Week Ending	INSTANT TICKETS				ON-LINE GAMES				TOTAL SALES			
		FY 2009	FY 2008	Difference	% change - Cumulative Sales	FY 2009	FY 2008	Difference	% change - Cumulative Sales	FY 2009	FY 2008	Difference	% change - Cumulative Sales
1	9/6/2008**	\$44,890,104	\$62,376,229	(\$17,486,125)	-28.0%	\$14,722,011	\$19,372,224	(\$4,650,213)	-24.0%	\$59,612,115	\$81,748,453	(\$22,136,338)	-27.1%
2	9/13/2008	\$46,309,551	\$52,458,866	(\$6,149,315)	-20.6%	\$13,704,860	\$16,926,163	(\$3,221,303)	-21.7%	\$60,014,411	\$69,385,029	(\$9,370,618)	-20.8%
3	9/20/2008	\$42,923,171	\$49,998,934	(\$7,075,763)	-18.6%	\$12,291,263	\$15,792,283	(\$3,501,020)	-21.8%	\$55,214,434	\$65,791,217	(\$10,576,783)	-19.4%
4	9/27/2008	\$47,042,801	\$49,894,175	(\$2,851,374)	-15.6%	\$14,222,339	\$14,800,514	(\$578,175)	-17.9%	\$61,265,140	\$64,694,689	(\$3,429,549)	-16.2%
5	10/4/2008	\$50,747,162	\$53,486,863	(\$2,739,701)	-13.5%	\$15,784,472	\$16,618,430	(\$833,958)	-15.3%	\$66,531,634	\$70,105,293	(\$3,573,659)	-14.0%
6	10/11/2008	\$49,763,789	\$50,918,020	(\$1,154,231)	-11.7%	\$15,622,498	\$15,601,410	\$21,088	-12.9%	\$65,386,287	\$66,519,430	(\$1,133,143)	-12.0%
7	10/18/2008	\$49,299,053	\$50,532,253	(\$1,233,200)	-10.5%	\$15,167,940	\$15,682,666	(\$514,726)	-11.6%	\$64,466,993	\$66,214,919	(\$1,747,926)	-10.7%
8	10/25/2008	\$49,977,581	\$50,347,450	(\$369,869)	-9.3%	\$14,525,843	\$15,586,516	(\$1,060,673)	-11.0%	\$64,503,424	\$65,933,966	(\$1,430,542)	-9.7%
9	11/1/2008	\$50,346,542	\$53,953,733	(\$3,607,191)	-9.0%	\$14,838,845	\$16,775,983	(\$1,937,139)	-11.1%	\$65,185,387	\$70,729,716	(\$5,544,330)	-9.5%
10	11/8/2008	\$54,860,087	\$53,635,090	\$1,224,997	-7.9%	\$16,057,069	\$15,912,791	\$144,278	-9.9%	\$70,917,156	\$69,547,881	\$1,369,275	-8.3%
11	11/15/2008	\$53,484,812	\$51,254,401	\$2,230,411	-6.8%	\$15,829,819	\$15,797,076	\$32,744	-9.0%	\$69,314,631	\$67,051,477	\$2,263,155	-7.3%
12	11/22/2008	\$52,806,511	\$50,897,817	\$1,908,694	-5.9%	\$16,460,748	\$15,801,720	\$659,028	-7.9%	\$69,267,259	\$66,699,537	\$2,567,722	-6.4%
13	11/29/2008	\$52,199,741	\$53,913,115	(\$1,713,374)	-5.7%	\$17,397,576	\$17,055,505	\$342,072	-7.1%	\$69,597,317	\$70,968,620	(\$1,371,303)	-6.0%
14	12/6/2008	\$56,731,851	\$55,702,697	\$1,029,154	-5.1%	\$20,363,789	\$17,900,717	\$2,463,073	-5.5%	\$77,095,640	\$73,603,414	\$3,492,227	-5.2%
15	12/13/2008	\$54,109,617	\$53,703,516	\$406,101	-4.7%	\$22,952,228	\$17,820,841	\$5,131,387	-3.0%	\$77,061,845	\$71,524,357	\$5,537,488	-4.3%
16	12/20/2008	\$55,777,328	\$57,592,769	(\$1,815,441)	-4.6%	\$15,833,517	\$17,436,233	(\$1,602,716)	-3.4%	\$71,610,845	\$75,029,002	(\$3,418,157)	-4.3%
17	12/27/2008	\$57,597,885	\$57,696,003	(\$98,118)	-4.3%	\$15,851,771	\$14,743,680	\$1,108,091	-2.9%	\$73,449,656	\$72,439,683	\$1,009,973	-4.0%
18	1/3/2009	\$57,582,115	\$57,935,952	(\$353,837)	-4.1%	\$16,900,028	\$15,704,450	\$1,195,578	-2.3%	\$74,482,143	\$73,640,402	\$841,741	-3.7%
19	1/10/2009	\$54,250,945	\$55,360,542	(\$1,109,597)	-4.0%	\$16,203,220	\$15,691,540	\$511,680	-2.0%	\$70,454,165	\$71,052,082	(\$597,917)	-3.5%
20	1/17/2009	\$51,625,339	\$54,920,166	(\$3,294,827)	-4.1%	\$15,701,605	\$16,259,669	(\$558,064)	-2.1%	\$67,326,944	\$71,179,835	(\$3,852,891)	-3.6%
21	1/24/2009	\$52,789,573	\$54,439,890	(\$1,650,317)	-4.1%	\$15,897,473	\$16,691,724	(\$794,251)	-2.2%	\$68,687,046	\$71,131,614	(\$2,444,568)	-3.6%
22	1/31/2009	\$55,453,471	\$57,464,382	(\$2,010,911)	-4.0%	\$16,908,272	\$17,968,227	(\$1,059,955)	-2.4%	\$72,361,743	\$75,432,609	(\$3,070,866)	-3.7%
23	2/7/2009	\$62,247,711	\$60,715,019	\$1,532,692	-3.7%	\$18,354,314	\$20,097,338	(\$1,743,025)	-2.7%	\$80,602,025	\$80,812,357	(\$210,333)	-3.5%
24	2/14/2009		\$57,093,143				\$22,179,908				\$79,273,051		
25	2/21/2009		\$57,627,047				\$27,230,539				\$84,857,586		
26	2/28/2009		\$55,591,667				\$17,016,118				\$72,607,785		
27	3/7/2009		\$56,837,481				\$16,690,193				\$73,527,674		
28	3/14/2009		\$54,587,112				\$16,448,165				\$71,035,277		
29	3/21/2009		\$53,098,937				\$16,639,184				\$69,738,121		
30	3/28/2009		\$53,933,689				\$17,698,625				\$71,632,314		
31	4/4/2009		\$57,598,982				\$17,665,411				\$75,264,393		
32	4/11/2009		\$53,954,185				\$15,860,784				\$69,814,969		
33	4/18/2009		\$53,946,736				\$16,452,676				\$70,399,412		
34	4/25/2009		\$51,533,006				\$16,873,949				\$68,406,955		
35	5/2/2009		\$53,250,568				\$18,202,103				\$71,452,671		
36	5/9/2009		\$54,060,849				\$18,422,562				\$72,483,411		
37	5/16/2009		\$54,010,641				\$20,728,360				\$74,739,001		
38	5/23/2009		\$50,377,032				\$15,461,384				\$65,838,416		
39	5/30/2009		\$49,545,080				\$15,175,370				\$64,720,450		
40	6/6/2009		\$53,702,986				\$15,982,166				\$69,685,152		

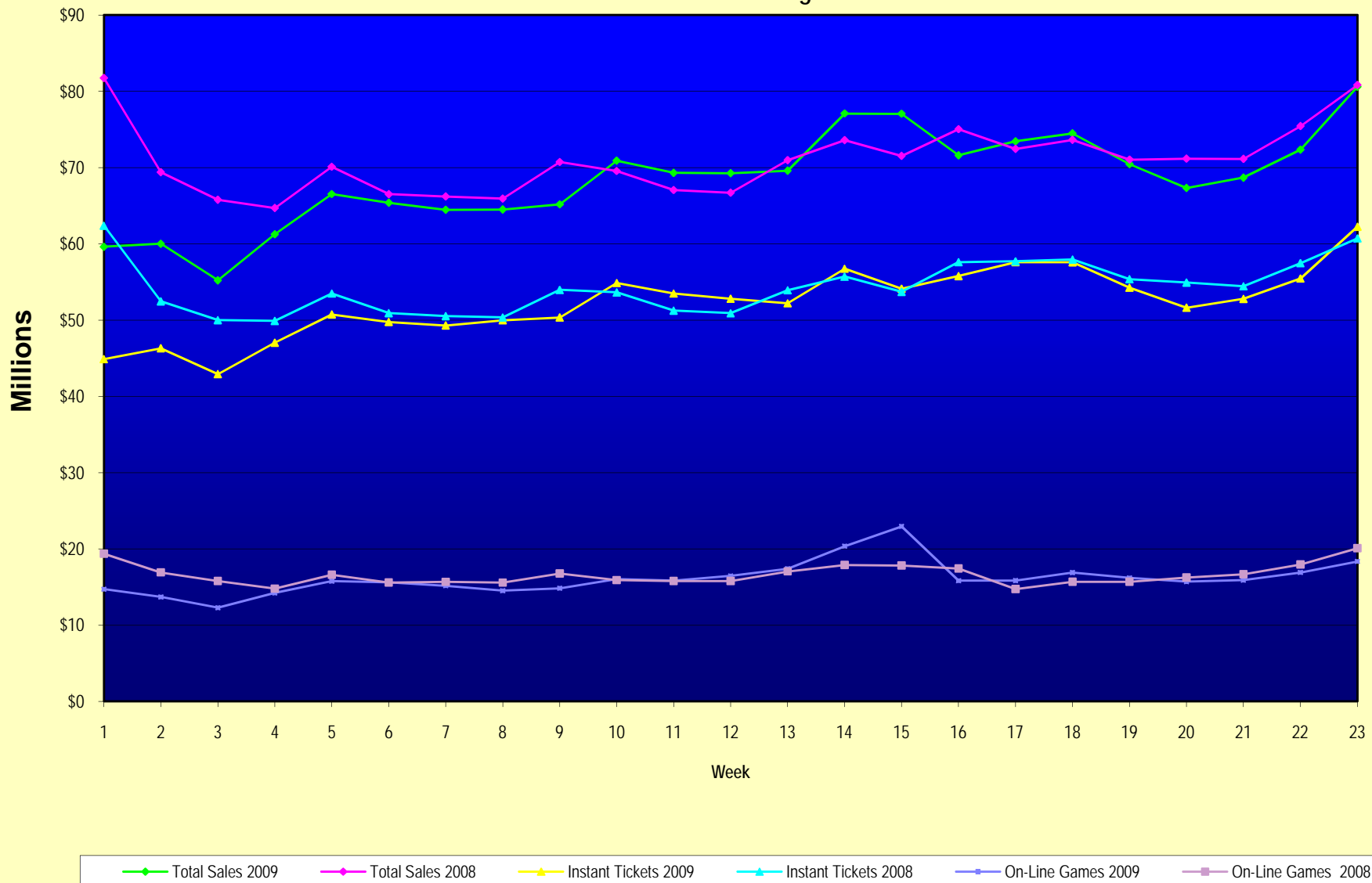
Note: Week 1 is not a full week of sales as this report is prepared on a Fiscal Year basis.

Texas Lottery Commission  
Fiscal Year Over Year Change in Sales  
Unaudited  
FY 2009 Compared to FY 2008

Week	FY 2009 Week Ending	INSTANT TICKETS				ON-LINE GAMES				TOTAL SALES			
		FY 2009	FY 2008	Difference	% change - Cumulative Sales	FY 2009	FY 2008	Difference	% change - Cumulative Sales	FY 2009	FY 2008	Difference	% change - Cumulative Sales
41	6/13/2009		\$51,171,483				\$16,589,087				\$67,760,570		
42	6/20/2009		\$50,650,362				\$15,728,484				\$66,378,846		
43	6/27/2009		\$49,258,266				\$15,250,905				\$64,509,171		
44	7/4/2009		\$53,393,355				\$16,270,619				\$69,663,974		
45	7/11/2009		\$53,127,756				\$16,914,922				\$70,042,678		
46	7/18/2009		\$51,593,146				\$17,752,738				\$69,345,884		
47	7/25/2009		\$49,902,181				\$16,706,145				\$66,608,326		
48	8/1/2009		\$49,605,420				\$16,254,383				\$65,859,803		
49	8/8/2009		\$50,961,907				\$16,770,496				\$67,732,403		
50	8/15/2009		\$49,452,511				\$16,749,487				\$66,201,998		
51	8/22/2009		\$49,249,518				\$17,286,302				\$66,535,820		
52	8/29/2009		\$49,468,928				\$18,109,997				\$67,578,925		
53	9/5/2009		\$6,054,239				\$493,109				\$6,547,348		
Total thru Current Week		\$1,202,816,740	\$1,249,197,882	(\$46,381,142)	-3.7%	\$371,591,496	\$382,037,695	(\$10,446,199)	-2.7%	\$1,574,408,236	\$1,631,235,577	(\$56,827,341)	-3.5%
Fiscal Year Total		\$1,202,816,740	\$2,783,836,095			\$371,591,496	\$887,641,858			\$1,574,408,236	\$3,671,477,953		

\*\* FY 2009 includes 6 days; FY 2008 includes 8 days  
FY 2009 average daily sales are \$9,242,258. Two days at average daily sales are \$18,484,516.

### Texas Lottery Commission Fiscal Year Over Year Change in Sales



Note: Week 1 is not a full week of sales as this report is prepared on a Fiscal Year basis.

Texas Lottery Commission  
Instant Tickets by Price Point  
Sales, Prize Expense, Sales Contribution and Payout Percentage With Year Over Year Changes  
Unaudited

Fiscal Year	Price Point	# of Active Games	FY Sales	% of Instant Ticket Sales	Year over Year Change in Sales	FY Prize Expense	Year over Year Change in Prize Expense	FY Sales Contribution	Year over Year Change in Contribution	Average Prize Payout %	Year over Year Change in Payout %
2008	\$1.00	39	108,376,478	8.7%		\$65,107,215		\$43,269,263		60.1%	0.0%
thru	\$2.00	45	205,998,828	16.5%		\$134,166,231		\$71,832,597		65.1%	0.4%
2/19/2008	\$3.00	13	100,080,234	8.0%		\$65,816,454		\$34,263,780		65.8%	-0.1%
	\$5.00	39	343,652,240	27.5%		\$232,599,070		\$111,053,170		67.7%	-0.4%
	\$7.00	11	84,138,936	6.7%		\$57,216,990		\$26,921,946		68.0%	0.1%
	\$10.00	17	192,094,186	15.4%		\$133,427,866		\$58,666,320		69.5%	-1.5%
	\$20.00	7	72,777,680	5.8%		\$52,327,298		\$20,450,382		71.9%	-0.1%
	\$25.00	2	41,178,000	3.3%		\$29,897,575		\$11,280,425		72.6%	0.3%
	\$30.00	3	24,774,300	2.0%		\$17,928,239		\$6,846,061		72.4%	0.1%
	\$50.00	2	76,127,000	6.1%		\$54,920,113		\$21,206,887		72.1%	0.0%
<b>Total</b>		<b>178</b>	<b>\$1,249,197,882</b>			<b>\$843,407,050</b>		<b>\$405,790,832</b>		<b>67.5%</b>	
2009	\$1.00	37	107,429,231	8.9%		64,629,115		42,800,116		60.2%	0.1%
thru	\$2.00	33	208,073,381	17.3%		135,361,289		72,712,092		65.1%	-0.3%
2/7/2009	\$3.00	14	128,743,266	10.7%		84,629,956		44,113,310		65.7%	0.0%
	\$5.00	37	371,777,734	30.9%		252,853,002		118,924,732		68.0%	0.1%
	\$7.00	6	52,019,163	4.3%		35,378,574		16,640,589		68.0%	0.0%
	\$10.00	15	161,590,880	13.4%		113,087,058		48,503,822		70.0%	0.0%
	\$20.00	7	112,969,040	9.4%		81,075,042		31,893,998		71.8%	0.0%
	\$25.00	1	2,373,975	0.2%		1,726,707		647,268		72.7%	0.2%
	\$30.00	3	9,808,620	0.8%		7,107,793		2,700,827		72.5%	0.1%
	\$50.00	3	48,031,450	4.0%		34,721,176		13,310,274		72.3%	0.2%
<b>Total</b>		<b>156</b>	<b>\$1,202,816,740</b>			<b>\$810,569,712</b>		<b>\$392,247,028</b>		<b>67.4%</b>	
Variance	\$1.00	-2	-947,247		-0.9%	-478,100	-0.7%	-469,147	-1.1%	0.08%	
2009 to	\$2.00	-12	2,074,553		1.0%	1,195,058	0.9%	879,495	1.2%	-0.08%	
2008	\$3.00	1	28,663,032		28.6%	18,813,502	28.6%	9,849,530	28.7%	-0.03%	
	\$5.00	-2	28,125,494		8.2%	20,253,932	8.7%	7,871,562	7.1%	0.33%	
	\$7.00	-5	-32,119,773		-38.2%	-21,838,416	-38.2%	-10,281,357	-38.2%	0.01%	
	\$10.00	-2	-30,503,306		-15.9%	-20,340,807	-15.2%	-10,162,499	-17.3%	0.52%	
	\$20.00	0	40,191,360		55.2%	28,747,745	54.9%	11,443,615	56.0%	-0.13%	
	\$25.00	-1	-38,804,025		-94.2%	-28,170,868	-94.2%	-10,633,157	-94.3%	0.13%	
	\$30.00	0	-14,965,680		-60.4%	-10,820,446	-60.4%	-4,145,234	-60.5%	0.10%	
	\$50.00	1	-28,095,550		-36.9%	-20,198,937	-36.8%	-7,896,613	-37.2%	0.15%	
<b>Total</b>		<b>-22</b>	<b>-\$46,381,142</b>		<b>-3.7%</b>	<b>-\$32,837,338</b>	<b>-3.9%</b>	<b>-\$13,543,804</b>	<b>-3.3%</b>	<b>-0.13%</b>	

Texas Lottery Commission  
**Instant Tickets by Price Point**  
Sales, Prize Expense, Sales Contribution and Payout Percentage With Year Over Year Changes  
Unaudited

Notes - Instant Ticket Variances

		FY 2009		FY 2008		Difference
Sales	\$1 - \$7	\$868,042,775		\$842,246,716		\$25,796,059
Prize Exp.	\$1 - \$7	\$572,851,936		\$554,905,961		\$17,945,975
Sales Cont.	\$1 - \$7	\$295,190,839		\$287,340,755		\$7,850,084
Prize Exp. %	\$1 - \$7	66.0%		65.9%		0.1%
		FY 2009		FY 2008		Difference
Sales	\$10 - \$50	\$334,773,965		\$406,951,166		-\$72,177,201
Prize Exp.	\$10 - \$50	\$237,717,776		\$288,501,090		-\$50,783,314
Sales Cont.	\$10 - \$50	\$97,056,189		\$118,450,076		-\$21,393,887
Prize Exp. %	\$10 - \$50	71.0%		70.9%		0.1%
		FY 2009		FY 2008		Difference
Sales	Instant	\$1,202,816,740		\$1,249,197,882		-\$46,381,142
Prize Exp.	Instant	\$810,569,712		\$843,407,050		-\$32,837,338
Sales Cont.	Instant	\$392,247,028		\$405,790,832		-\$13,543,804
Prize Exp. %	Instant	67.4%		67.5%		-0.1%

		FY 2009		FY 2008		Difference
Sales	\$1 - \$10	\$1,029,633,655		\$1,034,340,902		-\$4,707,247
Prize Exp.	\$1 - \$10	\$685,938,994		\$688,333,826		-\$2,394,832
Sales Cont.	\$1 - \$10	\$343,694,661		\$346,007,076		-\$2,312,415
Prize Exp. %	\$1 - \$10	66.6%		66.5%		0.1%
		FY 2009		FY 2008		Difference
Sales	\$20 - \$50	\$173,183,085		\$214,856,980		-\$41,673,895
Prize Exp.	\$20 - \$50	\$124,630,718		\$155,073,224		-\$30,442,507
Sales Cont.	\$20 - \$50	\$48,552,367		\$59,783,756		-\$11,231,388
Prize Exp. %	\$20 - \$50	72.0%		72.2%		-0.2%
		FY 2009		FY 2008		Difference
Sales	Instant	\$1,202,816,740		\$1,249,197,882		-\$46,381,142
Prize Exp.	Instant	\$810,569,712		\$843,407,050		-\$32,837,338
Sales Cont.	Instant	\$392,247,028		\$405,790,832		-\$13,543,804
Prize Exp. %	Instant	67.4%		67.5%		-0.1%

Texas Lottery Commission  
**Weekly Sales Summary**  
**& Comparison to Previous Week**  
 Unaudited

	Week Ending 02/07/2009		Week Ending 01/31/2009			
	<u>THIS WEEK</u>	% of Sales	<u>LAST WEEK</u>	% of Sales	<u>\$ change</u>	<u>% change</u>
Total Sales	<u>\$80,602,025</u>		<u>\$72,361,743</u>		<u>\$8,240,282</u>	11.39%
Instant Tickets	<u>\$62,247,711</u>	77.2%	<u>\$55,453,471</u>	76.6%	<u>\$6,794,240</u>	12.25%
Lotto Texas	\$4,092,117	5.1%	\$3,837,299	5.3%	\$254,818	6.64%
Pick 3	\$6,336,717	7.9%	\$5,700,715	7.9%	\$636,003	11.16%
Pick 3 Sum It Up	\$134,543	0.2%	\$121,795	0.2%	\$12,749	10.47%
Cash 5	\$1,481,812	1.8%	\$1,403,756	1.9%	\$78,056	5.56%
Texas Two Step	\$842,746	1.0%	\$1,070,879	1.5%	-\$228,133	-21.30%
Mega Millions	\$3,509,032	4.4%	\$3,002,883	4.1%	\$506,149	16.86%
Megaplier	\$829,550	1.0%	\$731,253	1.0%	\$98,297	13.44%
Daily 4	\$1,007,529	1.3%	\$925,938	1.3%	\$81,592	8.81%
Daily 4 Sum It Up	\$120,268	0.1%	\$113,756	0.2%	\$6,512	5.72%
Total Online Sales	<u>\$18,354,314</u>		<u>\$16,908,272</u>		<u>\$1,446,042</u>	8.55%

\* Totals may not sum due to rounding.



Texas Lottery Commission  
Weekly Sales Summary  
Unaudited

INSTANT TICKETS  
TOP TEN SELLING GAMES

For the Week Ending : 02/07/2009

Rank	Price Point	Game	Sales (Millions)
1	\$ 10	20 TIMES THE MONEY	\$ 3.461
2	\$ 5	WELCOME TO FABULOUS LAS VEGAS	\$ 3.446
3	\$ 5	POT O'GOLD	\$ 3.024
4	\$ 20	SUPER SET FOR LIFE	\$ 2.884
5	\$ 5	HOT HAND	\$ 2.640
6	\$ 3	BONUS CASHWORD	\$ 2.617
7	\$ 10	MEGA JUMBO BUCKS II	\$ 2.480
8	\$ 10	SET FOR LIFE	\$ 2.262
9	\$ 5	GIANT JUMBO BUCKS II	\$ 2.235
10	\$ 7	SIZZLIN' RED 7'S	\$ 2.141

Texas Lottery Commission  
Prize Payout Tracking Report  
Unaudited

Through Week Ending 02/07/2009

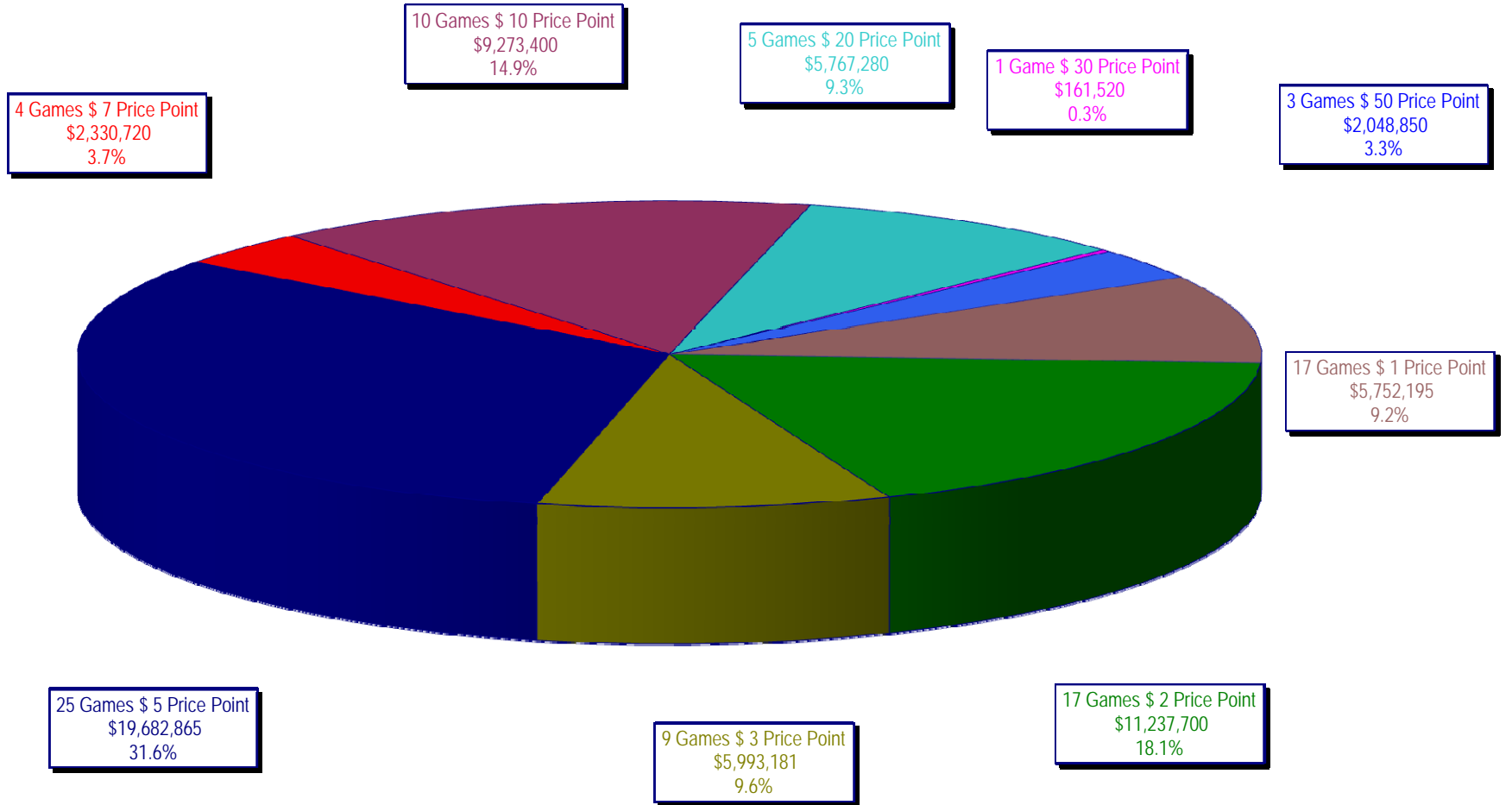
On-Line Sales

		FY Sales Through Week Ending 2/7/2009		FY Prize Expense Through Week Ending 2/7/2009	Actual* Prize Payout	Base Payout (Prize Pool)
Lotto	\$	80,974,726	\$	40,586,648	50.12%	50.00%
Pick 3		123,721,756		63,405,770	51.25%	50.00%
Pick 3 Sum It Up		2,617,296		1,173,499	44.84%	50.00%
Cash 5		31,278,499		15,740,536	50.32%	50.00%
Texas Two-Step		20,129,937		11,162,089	55.45%	50.00%
Mega Millions		73,942,848		36,397,213	49.22%	50.00%**
Megaplier		17,625,478		7,680,522	43.58%	N/A
Daily 4		18,911,123		8,402,650	44.43%	50.00%
Daily 4-Sum It Up		2,389,834		1,005,116	42.06%	50.00%
<b>Totals</b>	\$	<b>371,591,496</b>	\$	<b>185,554,042</b>	<b>49.93%</b>	

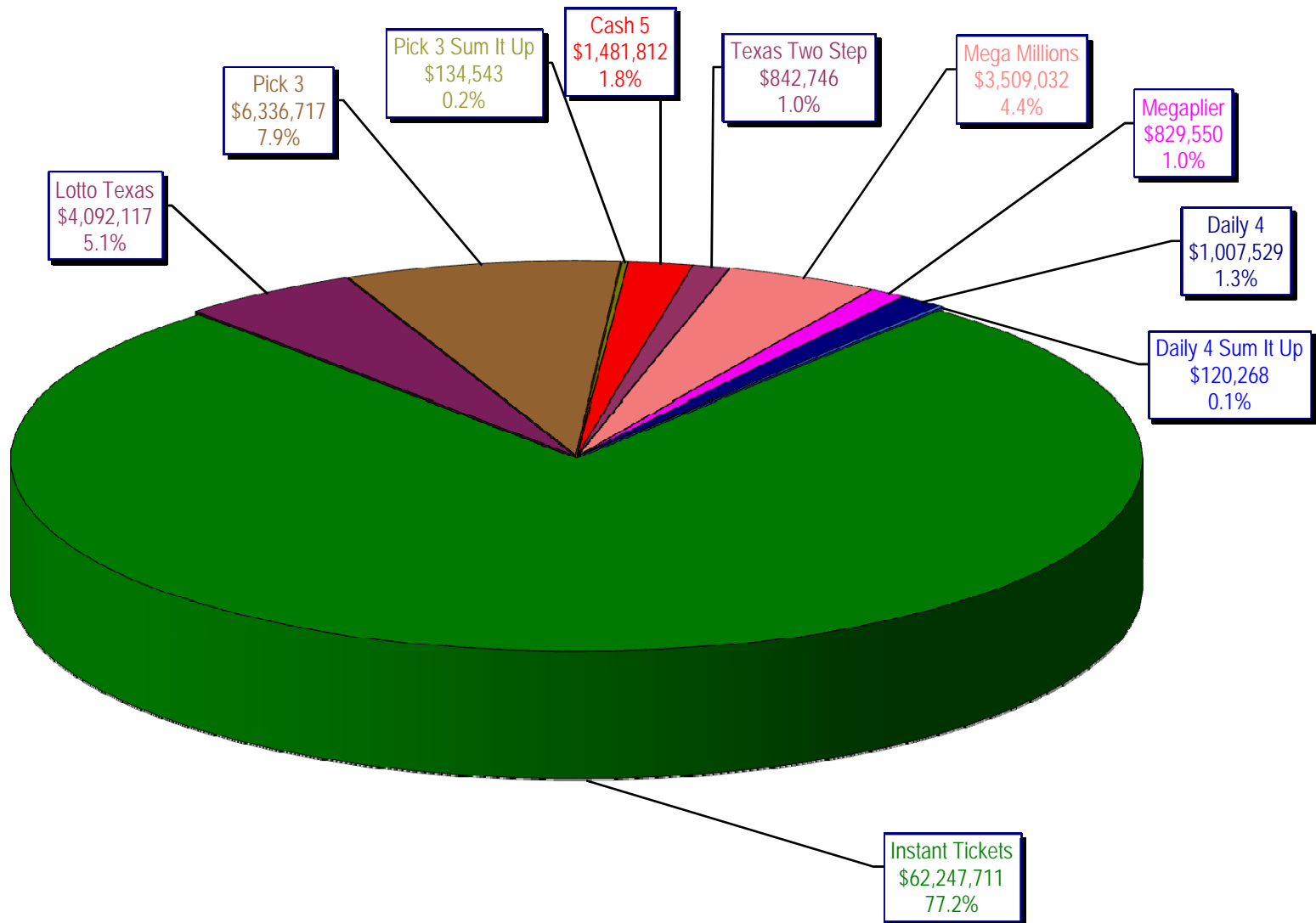
\* Before Unclaimed Prizes

\*\* Estimated; depends on # of guaranteed prizes won in Texas

Texas Lottery Commission  
Instant Ticket Sales  
For the Week Ending 02/07/2009  
(Unaudited)



Texas Lottery Commission  
**All Game Sales**  
For the Week Ending 02/07/2009  
(Unaudited)



Texas Lottery Commission - Weekly Sales Summary for FY 2009 (Unaudited)

Week Ended	Instant Games	New Games & Dates	Lotto Texas	Jackpot		Pick 3	Pick 3 Sum It Up	Cash 5	Texas Two Step	Jackpot		Mega Millions	Jackpot		Megaplier	Daily 4	Daily 4 Sum It Up	Total	Per Cap.
				W	S					M/T	TH/F		T	F					
9/6/2008	50,944,343.00	1108 (\$2,N), 1088 (\$3, N) - 9/01/08	3,378,718.00	5	6	5,436,414.00	122,123.00	1,396,622.00	890,346.00	350	450	2,445,490.00	12	16	649,090.00	786,482.50	109,834.00	66,159,462.50	2.77
9/13/2008	46,309,551.00	1109 (\$1,N), 1098 (\$5, N) - 9/08/08	3,020,089.00	7	8	4,705,585.50	105,899.00	1,279,412.00	856,199.00	600	200	2,327,214.00	24	12	617,672.00	696,633.00	96,156.50	60,014,411.00	2.51
9/20/2008	42,923,171.00	0	3,054,093.00	9	10	4,121,734.50	90,718.00	1,155,350.00	637,792.00	225	250	1,978,127.00	15	12	540,225.00	627,210.00	86,013.50	55,214,434.00	2.31
9/27/2008	47,042,801.00	1111 (\$2,N), 1099 (\$5, N) - 9/22/08	3,427,671.00	11	12	4,821,563.00	103,189.50	1,288,062.00	834,307.00	275	425	2,322,862.00	16	24	617,085.00	709,741.50	97,858.00	61,265,140.00	2.56
10/4/2008	50,747,162.00	1113 (\$1,N) 9/29/08	3,675,683.00	13	14	5,305,711.00	116,332.50	1,369,040.00	1,074,874.00	525	650	2,671,927.00	32	42	693,845.00	770,782.50	106,277.00	66,531,634.00	2.78
10/11/2008	49,763,789.00	0	3,732,365.00	15	16	5,287,094.00	114,665.50	1,370,334.00	1,305,250.00	800	975	2,306,070.00	12	16	622,120.00	778,204.00	106,395.00	65,386,286.50	2.74
10/18/2008	49,299,053.00	1117 (\$3,N), 1118 (\$20,N) - 10/13/08	3,780,438.00	17	18	5,149,258.00	109,530.00	1,355,601.00	741,849.00	200	200	2,500,644.00	23	32	652,198.00	776,366.00	102,056.00	64,466,993.00	2.70
10/25/2008	49,977,581.00	1119 (\$1,N), 1120 (\$5,N) - 10/20/08	3,210,762.00	4	5	5,099,671.00	107,104.50	1,339,079.00	789,649.00	225	275	2,456,965.00	42	12	641,206.00	778,434.00	102,972.50	64,503,424.00	2.70
11/1/2008	50,346,542.00	1121 (\$2,N), 1122 (\$10,N) - 10/27/08	3,325,641.00	6	7	5,234,124.00	109,983.00	1,339,046.00	946,035.00	375	475	2,347,596.00	16	23	626,235.00	805,572.00	104,612.50	65,185,386.50	2.73
11/8/2008	54,860,087.00	1123 (\$3,N), 1124 (\$7,N) - 11/03/08; 1103 (\$3,N) - 11/05/08; 1063 (\$3,N) - 11/07/08	3,290,417.00	4	5	5,686,701.00	118,495.00	1,397,985.00	1,158,101.00	625	750	2,729,302.50	31	42	692,662.00	871,230.00	112,175.50	70,917,156.00	2.97
11/15/2008	53,484,812.00	1125 (\$1, N), 1126 (\$5,N) - 11/10/08	3,336,934.00	6	7	5,459,984.00	112,884.00	1,366,024.00	766,955.00	200	225	3,102,251.00	51	62	749,736.00	830,957.00	104,094.00	69,314,631.00	2.90
11/22/2008	52,806,511.00	0	3,452,481.00	8	9	5,329,591.00	108,861.50	1,358,271.00	743,950.00	200	200	3,666,517.00	73	86	847,201.00	849,077.50	104,797.50	69,267,258.50	2.90
11/29/2008	52,199,741.00	1127 (\$2,N), 1128 (\$5,N) - 11/24/08	3,585,374.00	10	11	5,340,783.50	111,443.00	1,315,233.00	686,077.00	200	225	4,441,715.00	96	111	968,906.00	845,475.50	102,569.00	69,597,317.00	2.91
12/6/2008	56,731,851.00	0	3,794,991.00	12	13	5,752,593.00	121,663.50	1,416,446.00	780,328.00	250	200	6,238,355.00	128	146	1,270,214.00	881,841.50	107,357.00	77,095,640.00	3.23
12/13/2008	54,109,617.00	1129 (\$1, N) - 12/08/08	3,315,658.00	4	5	5,580,770.00	114,295.50	1,384,858.00	766,893.00	225	250	9,150,536.00	170	207	1,691,121.00	846,176.50	101,919.50	77,061,844.50	3.22
12/20/2008	55,777,328.00	1104 (\$2,N), 1105 (\$5,N), 1106 (\$10,N) - 12/15/08	3,432,340.00	6	7	5,741,120.00	116,075.50	1,401,805.00	741,945.00	200	200	2,736,234.00	12	16	687,875.00	871,579.50	104,543.00	71,610,845.00	3.00
12/27/2008	57,597,885.00	1077 (\$1,N), 1110 (\$1,N) - 12/22/08	3,582,169.00	8	4	5,628,081.50	115,323.00	1,340,590.00	708,906.00	225	250	2,842,167.00	22	29	706,042.00	828,346.00	100,146.00	73,449,655.50	3.07
1/3/2009	57,582,115.00	0	3,784,763.00	5	6	5,690,220.50	120,519.50	1,406,807.00	934,000.00	325	525	3,190,457.00	37	46	780,850.00	885,674.00	106,736.50	74,482,142.50	3.12
1/10/2009	54,250,945.00	1135 (\$2,N), 1136 (\$5,N) - 1/5/09	3,582,400.00	7	8	5,476,890.00	116,674.50	1,403,531.00	1,267,847.00	675	900	2,701,275.00	12	16	681,574.00	868,919.00	104,109.50	70,454,165.00	2.95
1/17/2009	51,625,339.00	1137 (\$1,N), 1138 (\$3,N) - 1/12/09	3,668,302.50	9	10	5,443,159.00	112,605.00	1,387,958.00	778,563.00	200	200	2,683,707.00	22	12	675,416.00	852,987.00	98,907.50	67,326,944.00	2.82
1/24/2009	52,789,573.00	1115 (\$2,N), 1116 (\$5,N) - 1/19/09	3,723,835.50	11	12	5,514,547.50	115,827.50	1,376,695.00	860,483.00	225	325	2,692,611.00	16	21	676,936.00	836,996.00	99,541.00	68,687,045.50	2.87
1/31/2009	55,453,471.00	1080 (\$1,N), 1024 (\$20,R) - 1/26/09; 1062 (\$5,N) - 1/28/09	3,837,299.00	13	14	5,700,714.50	121,794.50	1,403,756.00	1,070,879.00	450	600	3,002,883.00	30	40	731,253.00	925,937.50	113,755.50	72,361,743.00	3.03
2/7/2009	62,247,711.00	1035 (\$2,N), 1144 (\$5,N), 1058 (\$10, N) - 2/2/09	4,092,117.00	15	16	6,336,717.00	134,543.00	1,481,812.00	842,746.00	200	225	3,509,032.00	50	60	829,550.00	1,007,529.00	120,267.50	80,602,024.50	3.37
weekly change	12.25%		6.64%			11.16%	10.47%	5.56%	-21.30%			16.86%			13.44%	8.81%	5.72%	11.39%	
	<b>SALES</b>		<b>SALES</b>			<b>SALES</b>	<b>SALES</b>	<b>SALES</b>	<b>SALES</b>			<b>SALES</b>			<b>SALES</b>	<b>SALES</b>	<b>SALES</b>	<b>SALES</b>	<b>% of Sales</b>
Startup to date	34,683,402,742.00		10,360,071,773.00			3,422,440,708.00	9,103,126.00	2,150,434,509.00	446,395,655.00			1,000,081,442.50			235,833,512.00	61,128,094.00	10,728,637.50	52,587,754,171.00	100.0%
Calendar Year to date	301,499,067.00		20,702,481.00			31,281,209.00	175,670.50	7,696,055.00	5,236,518.00			16,124,539.00			3,965,697.00	4,920,435.50	587,830.00	392,189,502.00	100.0%
Fiscal Year to date 2009	1,202,816,740.00		80,974,726.00			123,721,755.50	2,617,296.00	31,278,499.00	20,129,937.00			73,942,847.50			17,625,478.00	18,911,122.50	2,389,834.00	1,574,408,235.50	100.0%