



*WEEKLY SALES SUMMARY*

Unaudited

**Week Ending: 02/09/2013**

Texas Lottery Commission  
Fiscal Year to Date Sales Comparison  
Unaudited

Through the week ending 02/09/2013 (24 weeks)

Sales by Game	FY 2011 *	FY 2012 **	FY 2013	\$ Change		% Change	
				FY 2013 to FY 2011	FY 2013 to FY 2012	FY 2013 to FY 2011	FY 2013 to FY 2012
Instants	\$ 1,261,310,481	\$ 1,327,847,994	\$ 1,369,500,807	\$ 108,190,326	\$ 41,652,813	8.6%	3.1%
Lotto Texas	78,144,463	79,099,698	69,508,530	-8,635,933	-9,591,168	-11.1%	-12.1%
Pick 3	123,318,192	119,974,705	118,225,253	-5,092,939	-1,749,452	-4.1%	-1.5%
Pick 3 Sum It Up	2,497,899	2,451,715	2,219,668	-278,231	-232,048	-11.1%	-9.5%
Cash Five	29,179,653	29,227,896	25,194,503	-3,985,150	-4,033,393	-13.7%	-13.8%
Texas Two Step	21,553,254	29,262,946	25,992,080	4,438,826	-3,270,866	20.6%	-11.2%
Mega Millions	86,965,527	67,930,206	46,884,532	-40,080,995	-21,045,674	-46.1%	-31.0%
Megaplier	17,408,390	15,052,314	10,921,430	-6,486,960	-4,130,884	-37.3%	-27.4%
Daily 4	25,535,283	28,385,624	31,425,764	5,890,481	3,040,140	23.1%	10.7%
Daily 4 Sum It Up	2,003,586	2,094,180	2,074,400	70,814	-19,780	3.5%	-0.9%
Powerball	37,812,896	70,432,495	125,408,781	87,595,885	54,976,287	231.7%	78.1%
Power Play	9,158,565	13,487,266	12,734,624	3,576,059	-752,642	39.0%	-5.6%
All or Nothing	-	-	39,917,602	39,917,602	39,917,602	-	-
<b>Total</b>	<b>\$ <u>1,694,888,189</u></b>	<b>\$ <u>1,785,247,037</u></b>	<b>\$ <u>1,880,007,973</u></b>	<b>\$ <u>185,119,785</u></b>	<b>\$ <u>94,760,936</u></b>	<b>10.9%</b>	<b>5.3%</b>

\* 3 extra days

\*\* 2 extra days

Texas Lottery Commission  
 Fiscal Year to Date Cumulative Average Sales Comparison  
 Unaudited

Through the week ending 02/09/2013 (24 weeks)

Sales by Game	FY 2011	FY 2012	FY 2013
Instant	\$ 7,644,306	\$ 8,096,634	\$ 8,453,709
Lotto Texas	473,603	482,315	429,065
Pick 3	747,383	731,553	729,786
Pick 3 Sum It Up	15,139	14,949	13,702
Cash Five	176,846	178,219	155,522
Texas Two Step	130,626	178,433	160,445
Mega Millions	527,064	414,209	289,411
Megaplier	105,505	91,782	67,416
Daily 4	154,759	173,083	193,986
Daily 4 Sum It Up	12,143	12,769	12,805
Powerball	229,169	429,466	774,128
Power Play	55,506	82,239	78,609
All or Nothing	-	-	259,205 *
<b>Total</b>	<b>\$ <u>10,272,050</u></b>	<b>\$ <u>10,885,653</u></b>	<b>\$ <u>11,617,788</u></b>
	thru 02/12/2011 165 days	thru 02/11/2012 164 days	thru 02/09/2013 162 days * 154 days

Texas Lottery Commission  
Fiscal Year Over Year Change in Sales  
Unaudited  
FY 2013 Compared to FY 2012

Week	FY 2013 Week Ending	INSTANT TICKETS				DRAW GAMES				TOTAL SALES			
		FY 2013	FY 2012	Difference	% change - Cumulative Sales	FY 2013	FY 2012	Difference	% change - Cumulative Sales	FY 2013	FY 2012	Difference	% change - Cumulative Sales
1	9/1/2012**	\$9,611,328	\$25,147,181	(\$15,535,853)	-61.8%	\$3,712,535	\$9,704,561	(\$5,992,026)	-61.7%	\$13,323,863	\$34,851,742	(\$21,527,879)	-61.8%
2	9/8/2012	\$56,941,761	\$50,591,068	\$6,350,693	12.6%	\$19,305,417	\$17,681,853	\$1,623,564	9.2%	\$76,247,178	\$68,272,921	\$7,974,257	11.7%
3	9/15/2012	\$56,302,875	\$49,835,063	\$6,467,812	13.0%	\$20,857,230	\$16,842,326	\$4,014,904	23.8%	\$77,160,105	\$66,677,389	\$10,482,716	15.7%
4	9/22/2012	\$54,974,438	\$49,777,138	\$5,197,300	10.4%	\$20,570,277	\$17,504,800	\$3,065,477	17.5%	\$75,544,715	\$67,281,938	\$8,262,777	12.3%
5	9/29/2012	\$54,606,674	\$51,040,274	\$3,566,400	7.0%	\$20,462,690	\$18,653,100	\$1,809,591	9.7%	\$75,069,364	\$69,693,374	\$5,375,991	7.7%
6	10/6/2012	\$59,223,327	\$53,715,157	\$5,508,170	10.3%	\$19,279,973	\$17,225,680	\$2,054,293	11.9%	\$78,503,300	\$70,940,837	\$7,562,463	10.7%
7	10/13/2012	\$57,075,606	\$51,942,121	\$5,133,485	9.9%	\$18,638,467	\$17,854,980	\$783,487	4.4%	\$75,714,073	\$69,797,101	\$5,916,972	8.5%
8	10/20/2012	\$56,630,134	\$52,837,769	\$3,792,365	7.2%	\$18,998,943	\$19,558,519	(\$559,577)	-2.9%	\$75,629,077	\$72,396,288	\$3,232,789	4.5%
9	10/27/2012	\$55,789,743	\$52,206,644	\$3,583,099	6.9%	\$20,130,190	\$21,504,565	(\$1,374,376)	-6.4%	\$75,919,933	\$73,711,209	\$2,208,724	3.0%
10	11/3/2012	\$58,142,777	\$56,265,310	\$1,877,467	3.3%	\$20,638,008	\$20,870,086	(\$232,079)	-1.1%	\$78,780,785	\$77,135,396	\$1,645,389	2.1%
11	11/10/2012	\$57,484,804	\$55,682,645	\$1,802,159	3.2%	\$20,862,872	\$17,862,404	\$3,000,468	16.8%	\$78,347,676	\$73,545,049	\$4,802,627	6.5%
12	11/17/2012	\$55,805,228	\$54,978,079	\$827,149	1.5%	\$21,660,705	\$17,879,985	\$3,780,721	21.1%	\$77,465,933	\$72,858,064	\$4,607,870	6.3%
13	11/24/2012	\$61,331,977	\$53,942,448	\$7,389,529	13.7%	\$27,172,853	\$16,877,145	\$10,295,708	61.0%	\$88,504,830	\$70,819,593	\$17,685,237	25.0%
14	12/1/2012	\$58,420,598	\$57,153,469	\$1,267,129	2.2%	\$62,797,943	\$18,298,636	\$44,499,307	243.2%	\$121,218,541	\$75,452,105	\$45,766,436	60.7%
15	12/8/2012	\$62,489,745	\$55,318,284	\$7,171,461	13.0%	\$19,630,155	\$19,033,326	\$596,829	3.1%	\$82,119,900	\$74,351,610	\$7,768,290	10.4%
16	12/15/2012	\$59,661,880	\$58,612,629	\$1,049,251	1.8%	\$20,064,982	\$20,045,279	\$19,704	0.1%	\$79,726,862	\$78,657,908	\$1,068,955	1.4%
17	12/22/2012	\$63,556,886	\$60,628,256	\$2,928,630	4.8%	\$19,084,653	\$22,572,986	(\$3,488,333)	-15.5%	\$82,641,539	\$83,201,242	(\$559,703)	-0.7%
18	12/29/2012	\$63,547,886	\$63,065,007	\$482,879	0.8%	\$17,359,874	\$19,948,521	(\$2,588,647)	-13.0%	\$80,907,760	\$83,013,528	(\$2,105,768)	-2.5%
19	1/5/2013	\$60,452,721	\$60,479,896	(\$27,175)	0.0%	\$18,833,047	\$17,331,888	\$1,501,159	8.7%	\$79,285,768	\$77,811,784	\$1,473,984	1.9%
20	1/12/2013	\$58,862,997	\$57,689,526	\$1,173,471	2.0%	\$18,879,167	\$17,568,732	\$1,310,435	7.5%	\$77,742,164	\$75,258,258	\$2,483,906	3.3%
21	1/19/2013	\$58,494,057	\$58,704,854	(\$210,797)	-0.4%	\$19,258,004	\$19,886,540	(\$628,537)	-3.2%	\$77,752,061	\$78,591,394	(\$839,334)	-1.1%
22	1/26/2013	\$57,871,744	\$57,611,325	\$260,419	0.5%	\$20,093,215	\$20,641,697	(\$548,483)	-2.7%	\$77,964,959	\$78,253,022	(\$288,064)	-0.4%
23	2/2/2013	\$61,846,715	\$65,553,366	(\$3,706,651)	-5.7%	\$21,032,335	\$23,689,855	(\$2,657,521)	-11.2%	\$82,879,050	\$89,243,221	(\$6,364,172)	-7.1%
24	2/9/2013	\$70,374,906	\$75,070,485	(\$4,695,579)	-6.3%	\$21,183,638	\$28,361,583	(\$7,177,945)	-25.3%	\$91,558,544	\$103,432,068	(\$11,873,524)	-11.5%
25	2/16/2013		\$66,679,947				\$19,588,615				\$86,268,562		
26	2/23/2013		\$64,868,899				\$19,965,388				\$84,834,287		
27	3/2/2013		\$67,135,065				\$20,947,181				\$88,082,246		
28	3/9/2013		\$68,299,006				\$22,152,639				\$90,451,645		
29	3/16/2013		\$65,013,692				\$23,351,718				\$88,365,410		
30	3/23/2013		\$64,035,255				\$27,416,609				\$91,451,864		
31	3/30/2013		\$65,135,991				\$84,628,987				\$149,764,978		
32	4/6/2013		\$66,860,957				\$19,899,400				\$86,760,357		
33	4/13/2013		\$64,028,898				\$20,220,141				\$84,249,039		
34	4/20/2013		\$63,623,892				\$20,974,282				\$84,598,174		
35	4/27/2013		\$61,743,623				\$20,267,388				\$82,011,011		
36	5/4/2013		\$64,851,962				\$20,642,982				\$85,494,944		
37	5/11/2013		\$65,472,556				\$19,140,768				\$84,613,324		
38	5/18/2013		\$60,572,658				\$18,342,814				\$78,915,472		
39	5/25/2013		\$58,959,028				\$18,618,060				\$77,577,088		
40	6/1/2013		\$57,409,086				\$19,014,645				\$76,423,731		
41	6/8/2013		\$59,845,545				\$20,527,958				\$80,373,503		
42	6/15/2013		\$57,021,498				\$19,386,186				\$76,407,684		

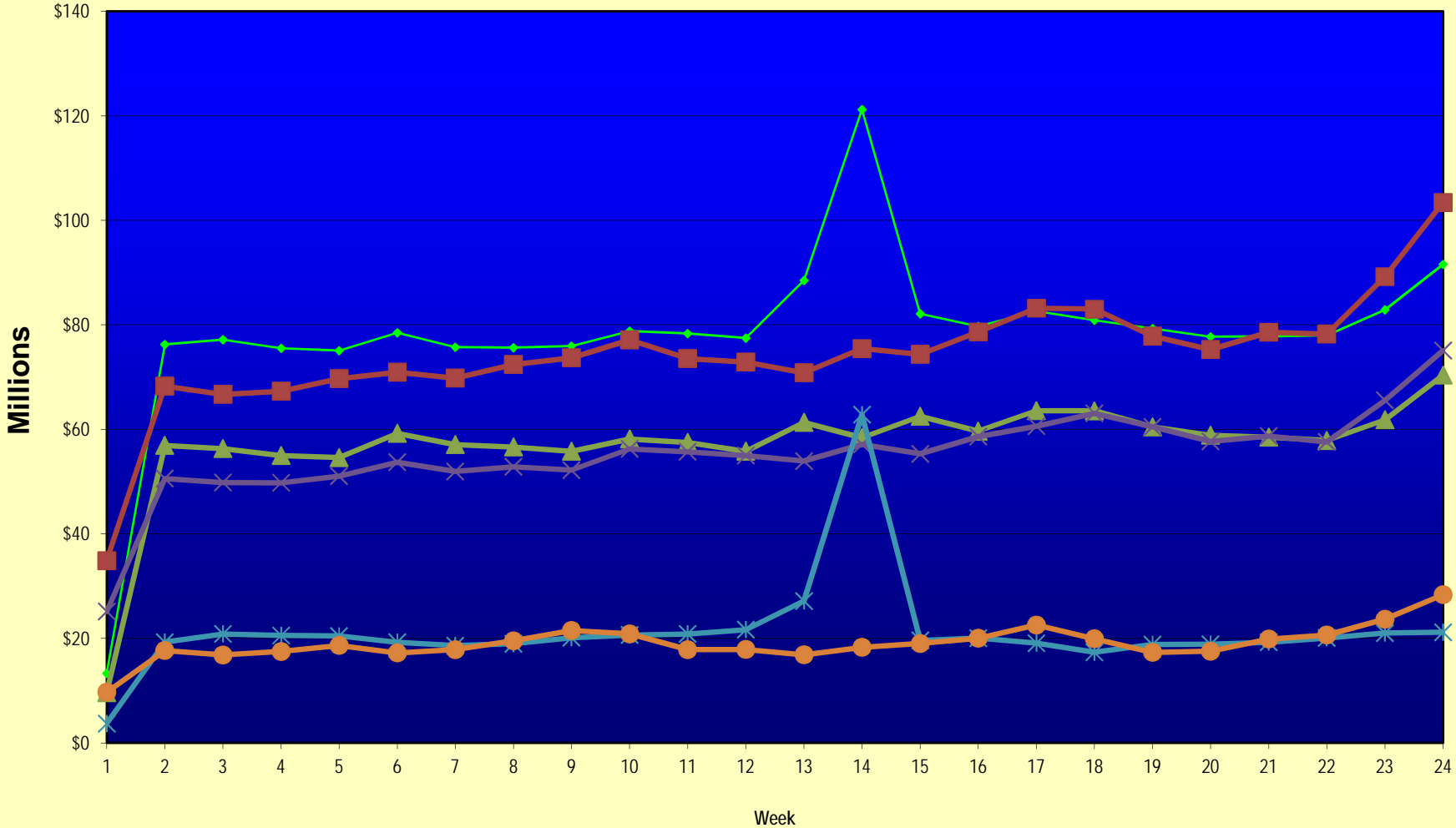
Note: Week 1 is not a full week of sales as this report is prepared on a Fiscal Year basis.

Texas Lottery Commission  
Fiscal Year Over Year Change in Sales  
Unaudited  
FY 2013 Compared to FY 2012

Week	FY 2013 Week Ending	INSTANT TICKETS				DRAW GAMES				TOTAL SALES			
		FY 2013	FY 2012	Difference	% change - Cumulative Sales	FY 2013	FY 2012	Difference	% change - Cumulative Sales	FY 2013	FY 2012	Difference	% change - Cumulative Sales
43	6/22/2013		\$57,892,076				\$17,594,154				\$75,486,230		
44	6/29/2013		\$57,497,435				\$18,153,658				\$75,651,093		
45	7/6/2013		\$60,345,000				\$19,059,152				\$79,404,152		
46	7/13/2013		\$57,683,321				\$18,751,043				\$76,434,364		
47	7/20/2013		\$57,083,343				\$18,769,201				\$75,852,544		
48	7/27/2013		\$54,006,781				\$18,934,103				\$72,940,884		
49	8/3/2013		\$56,557,409				\$20,206,705				\$76,764,114		
50	8/10/2013		\$57,799,452				\$22,832,120				\$80,631,572		
51	8/17/2013		\$54,845,724				\$25,435,624				\$80,281,348		
52	8/24/2013		\$55,661,277				\$17,524,474				\$73,185,751		
	8/31/2013		\$47,363,984				\$14,929,528				\$62,293,512		
Total thru Current Week		\$1,369,500,807	\$1,327,847,994	\$41,652,813	3.1%	\$510,507,166	\$457,399,043	\$53,108,123	11.6%	\$1,880,007,973	\$1,785,247,037	\$94,760,936	5.3%
Fiscal Year Total		\$1,369,500,807	\$3,086,141,354			\$510,507,166	\$1,104,674,559			\$1,880,007,973	\$4,190,815,913		

\*\* FY 2012 includes 3 days; FY 2013 includes 1 day.

### Texas Lottery Commission Fiscal Year Over Year Change in Sales



Note: Week 1 is not a full week of sales as this report is prepared on a Fiscal Year basis.

Texas Lottery Commission  
**Instant Tickets by Price Point**  
Sales, Prize Expense, Sales Contribution and Payout Percentage With Year Over Year Changes  
Unaudited

Fiscal Year	Price Point	# of Active Games	FY Sales	% of Instant Ticket Sales	Year over Year Change in Sales	FY Prize Expense	Year over Year Change in Prize Expense	FY Sales Contribution	Year over Year Change in Contribution	Average Prize Payout %	Year over Year Change in Payout %
2012	\$1.00	29	101,462,842	7.6%		62,138,908		39,323,934		61.2%	0.8%
thru	\$2.00	29	182,356,912	13.7%		118,558,145		63,798,767		65.0%	-0.8%
2/11/2012	\$3.00	16	161,197,161	12.1%		105,692,368		55,504,793		65.6%	0.0%
	\$5.00	37	423,716,930	31.9%		288,331,903		135,385,027		68.0%	0.2%
	\$7.00	4	18,199,419	1.4%		12,375,487		5,823,932		68.0%	0.0%
	\$10.00	15	208,902,320	15.7%		147,078,043		61,824,277		70.4%	-0.9%
	\$20.00	6	181,382,860	13.7%		135,320,081		46,062,779		74.6%	-0.1%
	\$50.00	2	50,629,550	3.8%		39,320,400		11,309,150		77.7%	0.0%
<b>Total</b>		<b>138</b>	<b>\$1,327,847,994</b>			<b>\$908,815,336</b>		<b>\$419,032,658</b>		<b>68.4%</b>	<b>-0.1%</b>
2013	\$1.00	27	86,511,557	6.3%		53,201,294		33,310,263		61.5%	1.4%
thru	\$2.00	30	179,898,370	13.1%		116,949,178		62,949,192		65.0%	-0.1%
2/9/2013	\$3.00	17	169,067,826	12.3%		110,848,740		58,219,086		65.6%	0.0%
	\$5.00	46	419,405,880	30.6%		284,877,985		134,527,895		67.9%	-0.1%
	\$7.00	2	16,076,074	1.2%		10,926,365		5,149,709		68.0%	0.0%
	\$10.00	12	241,014,640	17.6%		170,662,979		70,351,661		70.8%	-0.1%
	\$20.00	8	193,025,160	14.1%		144,501,682		48,523,478		74.9%	0.1%
	\$50.00	3	64,501,300	4.7%		50,078,048		14,423,252		77.6%	0.0%
<b>Total</b>		<b>145</b>	<b>\$1,369,500,807</b>			<b>\$942,046,272</b>		<b>\$427,454,535</b>		<b>68.8%</b>	<b>0.3%</b>
<b>Variance</b>	\$1.00	-2	-14,951,285		-14.7%	-8,937,614	-14.4%	-6,013,671	-15.3%	0.25%	
2013 to	\$2.00	1	-2,458,542		-1.3%	-1,608,967	-1.4%	-849,575	-1.3%	-0.01%	
2012	\$3.00	1	7,870,665		4.9%	5,156,371	4.9%	2,714,294	4.9%	0.00%	
	\$5.00	9	-4,311,050		-1.0%	-3,453,918	-1.2%	-857,132	-0.6%	-0.12%	
	\$7.00	-2	-2,123,345		-11.7%	-1,449,122	-11.7%	-674,223	-11.6%	-0.03%	
	\$10.00	-3	32,112,320		15.4%	23,584,937	16.0%	8,527,383	13.8%	0.41%	
	\$20.00	2	11,642,300		6.4%	9,181,602	6.8%	2,460,698	5.3%	0.26%	
	\$50.00	1	13,871,750		27.4%	10,757,648	27.4%	3,114,102	27.5%	-0.02%	
<b>Total</b>		<b>7</b>	<b>\$41,652,813</b>		<b>3.1%</b>	<b>\$33,230,936</b>	<b>3.7%</b>	<b>\$8,421,877</b>	<b>2.0%</b>	<b>0.34%</b>	

Notes - Instant Ticket Variances

Texas Lottery Commission  
**Instant Tickets by Price Point**  
**Sales, Prize Expense, Sales Contribution and Payout Percentage With Year Over Year Changes**  
 Unaudited

			FY 2013		FY 2012	Difference
Sales	\$1 - \$7	1	\$870,959,707		\$886,933,264	-\$15,973,557
Prize Exp.	\$1 - \$7	1	\$576,803,562		\$587,096,812	-\$10,293,250
Sales Cont.	\$1 - \$7	1	\$294,156,145		\$299,836,452	-\$5,680,307
Prize Exp. %	\$1 - \$7	1	66.2%		66.2%	0.0%
			FY 2013		FY 2012	Difference
Sales	\$10 - \$50	2	\$498,541,100		\$440,914,730	\$57,626,370
Prize Exp.	\$10 - \$50	2	\$365,242,710		\$321,718,524	\$43,524,186
Sales Cont.	\$10 - \$50	1	\$133,298,390		\$119,196,206	\$14,102,184
Prize Exp. %	\$10 - \$50	2	73.3%		73.0%	0.3%
			FY 2013		FY 2012	Difference
Sales	Instant		\$1,369,500,807		\$1,327,847,994	\$41,652,813
Prize Exp.	Instant		\$942,046,272		\$908,815,336	\$33,230,936
Sales Cont.	Instant		\$427,454,535		\$419,032,658	\$8,421,877
Prize Exp. %	Instant		68.8%		68.4%	0.3%

			FY 2013		FY 2012	Difference
Sales	\$1 - \$10		\$1,111,974,347		\$1,095,835,584	\$16,138,763
Prize Exp.	\$1 - \$10		\$747,466,542		\$734,174,855	\$13,291,687
Sales Cont.	\$1 - \$10		\$364,507,805		\$361,660,729	\$2,847,076
Prize Exp. %	\$1 - \$10		67.2%		67.0%	0.2%
			FY 2013		FY 2012	Difference
Sales	\$20 - \$50		\$257,526,460		\$232,012,410	\$25,514,050
Prize Exp.	\$20 - \$50		\$194,579,730		\$174,640,481	\$19,939,249
Sales Cont.	\$20 - \$50		\$62,946,730		\$57,371,929	\$5,574,801
Prize Exp. %	\$20 - \$50		75.6%		75.3%	0.3%
			FY 2013		FY 2012	Difference
Sales	Instant		\$1,369,500,807		\$1,327,847,994	\$41,652,813
Prize Exp.	Instant		\$942,046,272		\$908,815,336	\$33,230,936
Sales Cont.	Instant		\$427,454,535		\$419,032,658	\$8,421,877
Prize Exp. %	Instant		68.8%		68.4%	0.3%



Texas Lottery Commission  
**Weekly Sales Summary**  
**& Comparison to Previous Week**  
 Unaudited

	Week Ending 02/09/2013	% of Sales	Week Ending 02/02/2013	% of Sales	\$ change	% change
	<u>THIS WEEK</u>		<u>LAST WEEK</u>			
Total Sales	<u>\$91,558,544</u>		<u>\$82,879,050</u>		<u>\$8,679,495</u>	10.47%
Instant Tickets	<u>\$70,374,906</u>	76.9%	<u>\$61,846,715</u>	74.6%	<u>\$8,528,191</u>	13.79%
Lotto	\$2,893,143	3.2%	\$2,754,143	3.3%	\$139,000	5.05%
Pick 3	\$5,374,541	5.9%	\$5,220,197	6.3%	\$154,344	2.96%
Pick 3 Sum It Up	\$101,660	0.1%	\$96,971	0.1%	\$4,689	4.83%
Cash Five	\$1,110,298	1.2%	\$1,066,170	1.3%	\$44,128	4.14%
Texas Two Step	\$1,053,776	1.2%	\$1,109,445	1.3%	-\$55,669	-5.02%
Mega Millions	\$1,785,080	1.9%	\$1,731,470	2.1%	\$53,610	3.10%
Megaplier	\$435,112	0.5%	\$423,745	0.5%	\$11,367	2.68%
Daily 4	\$1,483,017	1.6%	\$1,460,770	1.8%	\$22,247	1.52%
Daily 4 Sum It Up	\$96,782	0.1%	\$96,289	0.1%	\$494	0.51%
Powerball	\$4,830,224	5.3%	\$5,037,974	6.1%	-\$207,750	-4.12%
Power Play	\$551,530	0.6%	\$570,151	0.7%	-\$18,621	-3.27%
All or Nothing	\$1,468,476	1.6%	\$1,465,010	1.8%	\$3,466	0.24%
Total Draw Game Sales	<u>\$21,183,638</u>		<u>\$21,032,335</u>		<u>\$151,304</u>	0.72%

\* Totals may not sum due to rounding.

Texas Lottery Commission  
Weekly Sales Summary  
Unaudited

INSTANT TICKETS  
TOP TEN SELLING GAMES

For the Week Ending: 02/09/13

Rank	Price Point	Game	Sales (Millions)
1	\$ 10	10X MEGA MONEY	\$ 6.129
2	\$ 20	CASH EXCITEMENT	\$ 5.121
3	\$ 5	INSTANT RICHES	\$ 2.805
4	\$ 20	\$500 MILLION EXTREME CASH BLAST	\$ 2.426
5	\$ 5	\$100,000 WINNINGS	\$ 2.382
6	\$ 50	\$7,500,000 FORTUNE	\$ 2.278
7	\$ 10	\$200 MILLION CASH SPECTACULAR	\$ 2.213
8	\$ 3	BONUS CASHWORD	\$ 2.123
9	\$ 5	GOLDEN SPADES	\$ 2.092
10	\$ 2	BLACKJACK TRIPLER	\$ 1.978

Texas Lottery Commission  
Prize Payout Tracking Report  
Unaudited

Through Week Ending 02/09/13

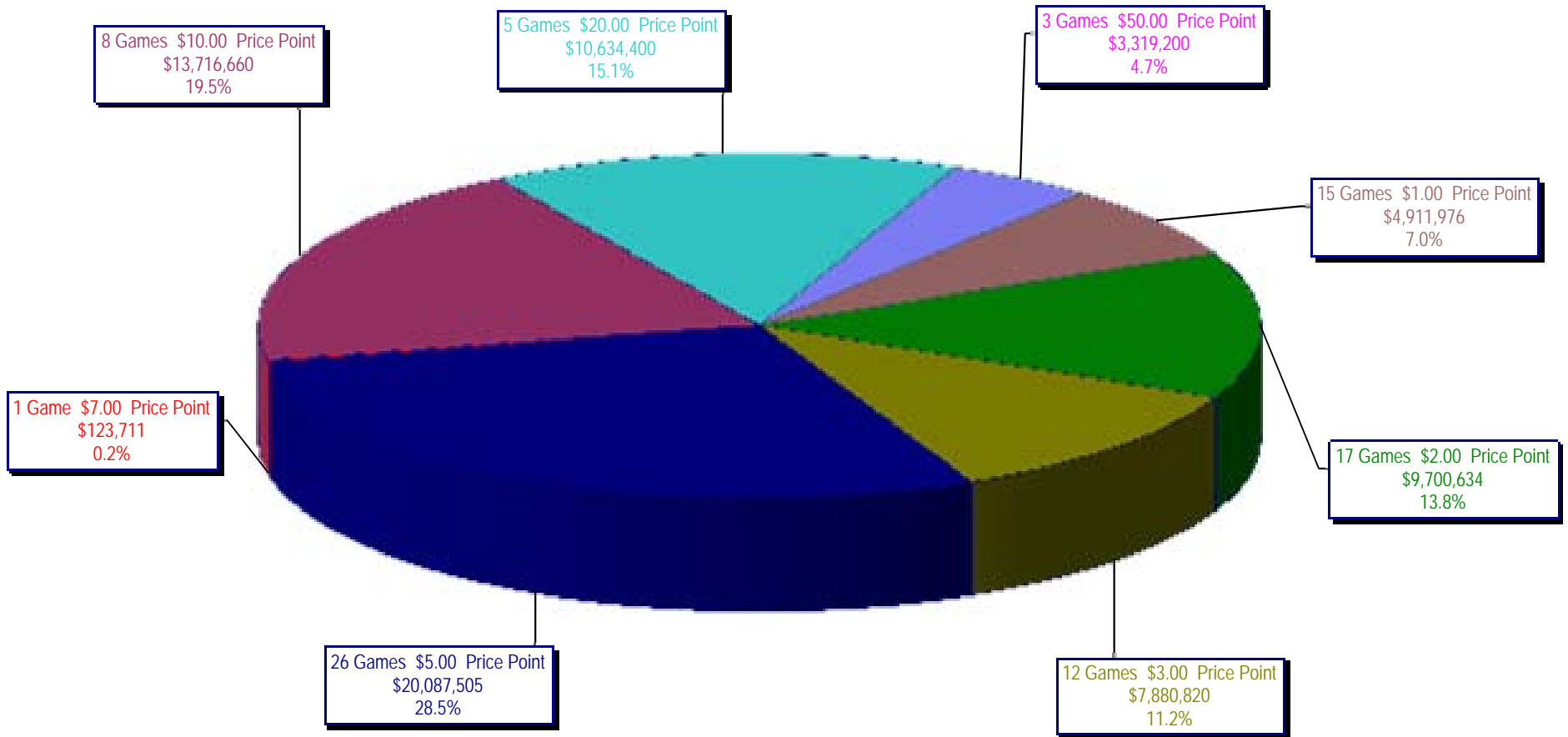
Draw Game Sales

		FY Sales Through Week Ending 2/9/2013		FY Prize Expense Through Week Ending 2/9/2013	Actual* Prize Payout	Base Payout (Prize Pool)
Lotto	\$	69,508,530	\$	46,497,136	66.89%	50.00%
Pick 3		118,225,253		61,489,780	52.01%	50.00%
Pick 3 Sum It Up		2,219,668		1,098,529	49.49%	50.00%
Cash Five		25,194,503		12,598,955	50.01%	50.00%
Texas Two Step		25,992,080		13,066,582	50.27%	50.00%
Mega Millions		46,884,532		22,901,315	48.85%	50.00%**
Megaplier		10,921,430		5,530,259	50.64%	N/A
Daily 4		31,425,764		16,129,350	51.33%	50.00%
Daily 4 Sum It Up		2,074,400		879,331	42.39%	50.00%
Powerball		125,408,781		66,301,674	52.87%	50.00%**
Power Play		12,734,624		7,179,199	56.38%	N/A
All or Nothing		39,917,602		23,605,668	59.14%	50.00%
<b>Totals</b>	\$	<b>510,507,166</b>	\$	<b>277,277,777</b>	<b>54.31%</b>	

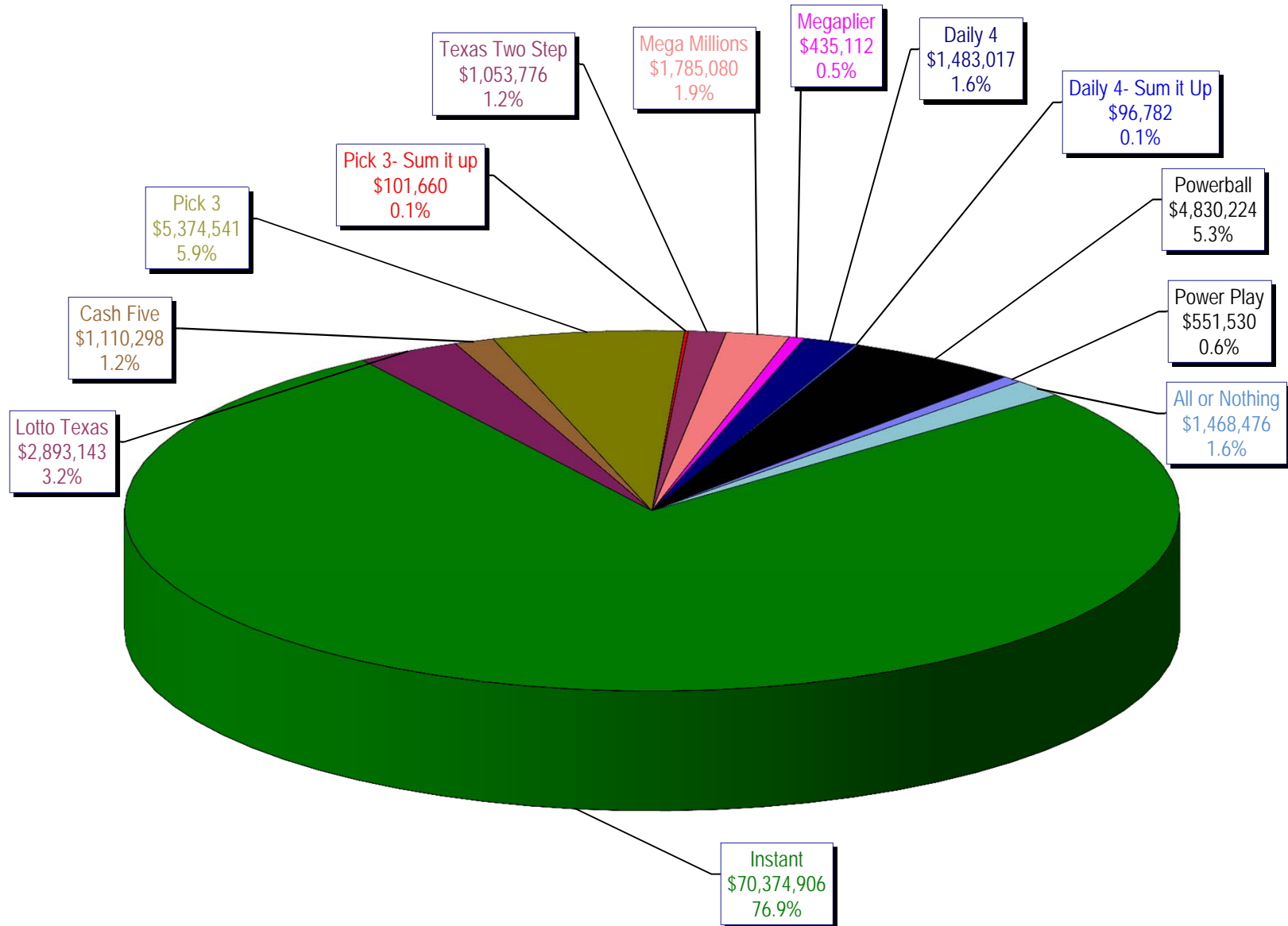
\* Before Unclaimed Prizes

\*\* Estimated; depends on # of guaranteed prizes won in Texas

Texas Lottery Commission  
Instant Ticket Sales  
For the Week Ending 02/09/13  
(Unaudited)



**Texas Lottery Commission  
All Game Sales  
For the Week Ending 02/09/13  
(Unaudited)**



Texas Lottery Commission - Weekly Sales Summary for FY 2013 (Unaudited)

Week Ended	Instant Games	New Games & Dates	Lotto Texas	Jackpot W S	Pick 3	Pick 3 Sum It Up	Cash Five	Texas Two Step	Jackpot M TH	Mega Millions	Jackpot T F	Megaplier	Daily 4	Daily 4 Sum It Up	Powerball	Jackpot W S	Power Play	All or Nothing	Total	Per Cap.
9/1/2012	56,975,312	1446 (\$1, N); 1444 (\$2, N) - 08/27/12	2,972,415	12 13	4,967,337	105,441	1,198,597	1,455,689	500 675	2,769,421	73 83	612,072	1,419,103	97,265	2,680,694	70 80	364,030		75,617,375	2.95
9/8/2012	56,941,761	1440 (\$2, N); 1458 (\$3, N); 1459 (\$5, N) - 09/03/12	3,005,564	14 15	5,112,132	106,959	1,185,494	1,179,003	875 200	3,140,536	93 105	665,392	1,412,279	99,861	3,002,910	90 100	395,287		76,247,178	2.97
9/15/2012	56,302,875	1452 (\$3, N) - 09/10/12	2,999,894	16 17	4,785,209	95,720	1,118,519	894,412	225 200	2,684,227	120 12	580,869	1,290,478	90,795	3,373,296	110 125	417,470	2,526,342	77,160,105	3.01
9/22/2012	54,974,438	1460 (\$1, N); 1461 (\$5, N) - 09/17/12	2,986,898	18 19	4,611,684	89,173	1,091,440	986,264	225 325	1,874,336	15 12	452,082	1,258,191	86,390	4,122,790	149 174	479,344	2,531,686	75,544,715	2.94
9/29/2012	54,606,674	1462 (\$2, N); 1472 (\$10, N) - 09/24/12	3,047,519	20 21	4,708,250	90,752	1,077,739	1,313,257	475 625	1,884,366	14 21	452,334	1,278,847	87,211	3,779,359	200 40	445,091	2,297,966	75,069,364	2.92
10/6/2012	59,223,327	1464 (\$5, N) - 10/01/12	3,164,231	22 23	4,947,571	96,251	1,121,146	1,188,386	800 200	2,055,918	28 36	482,303	1,310,612	89,270	2,266,428	50 40	312,877	2,244,980	78,503,300	3.06
10/13/2012	57,075,606	1465 (\$1, N); 1466 (\$20, N) - 10/08/2012	3,133,742	24 25	4,793,793	89,663	1,074,687	865,146	225 200	2,163,099	45 53	492,614	1,261,858	84,585	2,241,120	50 60	309,684	2,128,476	75,714,073	2.95
10/20/2012	56,630,134	1467 (\$1, N); 1468 (\$5, N) - 10/15/12	3,172,820	26 27	4,959,071	88,413	1,074,980	970,100	225 325	1,984,966	61 12	466,730	1,296,602	84,868	2,447,518	70 80	328,436	2,124,439	75,629,077	2.95
10/27/2012	55,789,743	1469 (\$2, N); 1470 (\$10, N) - 10/22/2012	3,204,694	28 29	5,550,567	96,242	1,063,201	1,226,578	450 600	1,778,725	13 21	430,528	1,381,019	91,618	2,914,062	90 100	371,273	2,021,684	75,919,933	2.96
11/3/2012	58,142,777	1503 (\$5, N) - 10/29/2012	3,392,650	30 31	5,501,964	101,742	1,078,593	860,073	200 225	1,950,117	27 32	462,385	1,393,099	93,773	3,466,242	110 124	424,170	1,913,200	78,780,785	3.07
11/10/2012	57,484,804	1475 (\$1, N); 1476 (\$3, N) - 11/05/2012	3,061,999	32 4	5,468,924	100,767	1,083,928	837,666	200 200	1,783,099	12 13	430,343	1,402,194	94,451	4,246,246	143 168	491,538	1,861,718	78,347,676	3.05
11/17/2012	55,805,228	1477 (\$2, N); 1478 (\$5, N) - 11/12/2012	2,599,190	5 6	5,248,059	91,989	1,059,723	920,319	225 300	1,841,571	19 26	440,783	1,345,121	88,391	5,638,425	185 214	615,323	1,771,812	77,465,933	3.02
11/24/2012	61,331,977	1394 (\$50, N) - 11/19/2012	2,768,876	7 8	5,086,879	91,409	1,021,878	883,407	425 200	2,003,365	33 41	472,723	1,300,693	85,037	10,768,045	250 325	1,053,006	1,637,536	88,504,830	3.45
12/1/2012	58,420,598	0	3,304,053	9 10	5,123,778	97,511	1,086,916	925,805	225 275	2,358,380	49 12	533,175	1,319,684	92,240	43,264,700	550 40	2,894,606	1,797,096	121,218,541	4.72
12/8/2012	62,489,745	1479 (\$1, N); 1485 (\$5, N) - 12/03/12	2,971,837	11 12	5,374,747	101,479	1,129,990	1,359,739	425 575	1,861,503	13 20	445,171	1,391,477	94,879	2,832,293	50 40	362,145	1,704,896	82,119,900	3.20
12/15/2012	59,661,880	0	3,087,087	13 14	5,221,374	98,173	1,104,769	1,928,422	775 1,000	1,933,357	27 35	456,193	1,398,647	88,811	2,808,938	50 40	364,704	1,574,508	79,726,862	3.11
12/22/2012	63,556,886	1481 (\$1, N); 1482 (\$2, N); 1483 (\$5, N) - 12/17/12	3,076,409	15 16	5,170,946	94,116	1,108,894	1,415,548	1,250 200	1,774,922	12 12	431,471	1,385,861	87,012	2,658,349	50 40	349,278	1,531,847	82,641,539	3.22
12/29/2012	63,547,886	0	2,869,329	17 18	4,868,470	90,224	1,041,264	922,869	200 225	1,670,747	18 25	400,587	1,289,758	79,651	2,413,294	50 40	324,222	1,389,460	80,907,760	3.15
1/5/2013	60,452,721	1484 (\$5, N) - 12/31/12	2,962,822	19 20	5,157,831	97,210	1,098,429	1,363,512	350 500	1,865,613	30 39	443,570	1,396,145	87,787	2,524,666	50 60	339,142	1,496,322	79,285,768	3.09
1/12/2013	58,862,997	1386 (\$2, N); 1536 (\$10, N) - 01/07/2013	2,588,023	4 5	4,974,232	92,872	1,079,444	1,622,926	700 900	2,036,427	47 55	471,998	1,345,510	81,625	2,755,940	70 80	349,383	1,480,788	77,742,164	3.03
1/19/2013	58,494,057	01/14/2013; 1538 (\$3, N) - 01/17/2013;	2,670,967	6 7	5,115,846	99,182	1,069,099	906,490	200 225	2,214,850	62 70	498,541	1,374,543	87,921	3,323,356	90 100	408,226	1,488,984	77,752,061	3.03
1/26/2013	57,871,744	0	2,733,016	8 9	4,936,726	91,918	1,047,379	1,178,148	325 475	2,367,780	80 89	526,051	1,401,635	87,842	3,808,150	110 130	454,194	1,460,376	77,964,959	3.04
2/2/2013	61,846,715	1489 (\$2, N); 1486 (\$20, N) - 01/28/2013	2,754,143	10 11	5,220,197	96,971	1,066,170	1,109,445	650 200	1,731,470	12 13	423,745	1,460,770	96,289	5,037,974	151 176	570,151	1,465,010	82,879,050	3.23
2/9/2013	70,374,906	1510 (\$5, N) - 2/4/13; 1537 (\$3, N) - 2/5/13	2,893,143	12 13	5,374,541	101,660	1,110,298	1,053,776	225 325	1,785,080	19 12	435,112	1,483,017	96,782	4,830,224	208 40	551,530	1,468,476	91,558,544	3.57
weekly change	13.8%		5.0%		3.0%	4.8%	4.1%	-5.0%		3.1%		2.7%	1.5%	0.5%	-4.1%		-3.3%	0.2%		10.5%
	<b>SALES</b>		<b>SALES</b>		<b>SALES</b>	<b>SALES</b>	<b>SALES</b>	<b>SALES</b>		<b>SALES</b>		<b>SALES</b>	<b>SALES</b>	<b>SALES</b>	<b>SALES</b>		<b>SALES</b>		<b>SALES</b>	<b>% of Sales</b>
Calendar Year to date	3,502,903,619		180,254,367		303,707,861	6,108,602	69,262,622	70,471,902		205,008,974		40,430,778	79,066,448	5,429,226	255,871,873		29,732,723	39,917,602	4,788,166,596	100.0%
Fiscal Year to date 2013	1,369,500,807		69,508,530		118,225,253	2,219,668	25,194,503	25,992,080		46,884,532		10,921,430	31,425,764	2,074,400	125,408,781		12,734,624	39,917,602	1,880,007,973	100.0%