



WEEKLY SALES SUMMARY

Unaudited

[Week Ending: 02/11/2012](#)

Texas Lottery Commission
Fiscal Year to Date Sales Comparison
Unaudited

Through the week ending 02/11/12 (24 weeks)

Sales by Game	FY 2010 *	FY 2011 **	FY 2012	\$ Change		% Change	
				FY 2012 to FY 2010	FY 2012 to FY 2011 to	FY 2012 to FY 2010	FY 2012 to FY 2011
Instants	\$ 1,259,840,658	\$ 1,261,310,481	\$ 1,327,847,994	\$ 68,007,336	\$ 66,537,513	5.4%	5.3%
Lotto Texas	122,256,373	78,144,463	79,099,698	-43,156,675	955,235	-35.3%	1.2%
Pick 3	121,989,807	123,318,192	119,974,705	-2,015,103	-3,343,488	-1.7%	-2.7%
Pick 3 Sum It Up	2,412,007	2,497,899	2,451,715	39,709	-46,184	1.6%	-1.8%
Cash Five	30,655,955	29,179,653	29,227,896	-1,428,059	48,243	-4.7%	0.2%
Texas Two Step	20,388,286	21,553,254	29,262,946	8,874,660	7,709,692	43.5%	35.8%
Mega Millions	86,305,132	86,965,527	67,930,206	-18,374,926	-19,035,321	-21.3%	-21.9%
Megaplier	19,293,157	17,408,390	15,052,314	-4,240,843	-2,356,076	-22.0%	-13.5%
Daily 4	23,625,768	25,535,283	28,385,624	4,759,856	2,850,341	20.1%	11.2%
Daily 4 Sum It Up	2,249,694	2,003,586	2,094,180	-155,514	90,594	-6.9%	4.5%
Powerball	4,111,464	37,812,896	70,432,495	66,321,031	32,619,599	-	-
Power Play	910,740	9,158,565	13,487,266	12,576,526	4,328,701	-	-
Total	\$ 1,694,039,040	\$ 1,694,888,189	\$ 1,785,247,037	\$ 91,207,998	\$ 90,358,849	5.4%	5.3%

* 2 extra days

** 1 extra day

Texas Lottery Commission
Fiscal Year to Date Cumulative Average Sales Comparison
Unaudited

Through the week ending 02/11/2012 (24 weeks)

Sales by Game	FY 2010	FY 2011	FY 2012
Instant	\$ 7,589,402	\$ 7,644,306	\$ 8,096,634
Lotto Texas	736,484	473,603	482,315
Pick 3	734,878	747,383	731,553
Pick 3 Sum It Up	14,530	15,139	14,949
Cash Five	184,674	176,846	178,219
Texas Two Step	122,821	130,626	178,433
Mega Millions	519,910	527,064	414,209
Megaplier	116,224	105,505	91,782
Daily 4	142,324	154,759	173,083
Daily 4 Sum It Up	13,552	12,143	12,769
Powerball	293,676 *	229,169	429,466
Power Play	65,053 *	55,506	82,239
Total	\$ 10,533,529	\$ 10,272,050	\$ 10,885,653

thru 02/13/2010

166 days

thru 02/12/2011

165 days

thru 02/11/2012

164 days

* 14 days

Texas Lottery Commission
Fiscal Year Over Year Change in Sales
Unaudited
FY 2012 Compared to FY 2011

Week	FY 2012 Week Ending	INSTANT TICKETS				ON-LINE GAMES				TOTAL SALES			
		FY 2012	FY 2011	Difference	% change - Cumulative Sales	FY 2012	FY 2011	Difference	% change - Cumulative Sales	FY 2012	FY 2011	Difference	% change - Cumulative Sales
1	9/3/2011**	\$25,147,181	\$31,659,033	(\$6,511,852)	-20.6%	\$9,704,561	\$11,430,717	(\$1,726,156)	-15.1%	\$34,851,742	\$43,089,750	(\$8,238,008)	-19.1%
2	9/10/2011	\$50,591,068	\$48,912,598	\$1,678,470	3.4%	\$17,681,853	\$16,398,160	\$1,283,693	7.8%	\$68,272,921	\$65,310,758	\$2,962,163	4.5%
3	9/17/2011	\$49,835,063	\$48,988,241	\$846,822	1.7%	\$16,842,326	\$17,166,827	(\$324,501)	-1.9%	\$66,677,389	\$66,155,068	\$522,321	0.8%
4	9/24/2011	\$49,777,138	\$48,471,310	\$1,305,828	2.7%	\$17,504,800	\$15,623,813	\$1,880,987	12.0%	\$67,281,938	\$64,095,123	\$3,186,815	5.0%
5	10/1/2011	\$51,040,274	\$50,145,138	\$895,136	1.8%	\$18,653,100	\$16,453,939	\$2,199,161	13.4%	\$69,693,374	\$66,599,077	\$3,094,297	4.6%
6	10/8/2011	\$53,715,157	\$50,918,591	\$2,796,566	5.5%	\$17,225,680	\$16,974,963	\$250,717	1.5%	\$70,940,837	\$67,893,554	\$3,047,283	4.5%
7	10/15/2011	\$51,942,121	\$49,096,011	\$2,846,110	5.8%	\$17,854,980	\$16,661,904	\$1,193,077	7.2%	\$69,797,101	\$65,757,915	\$4,039,187	6.1%
8	10/22/2011	\$52,837,769	\$50,158,946	\$2,678,823	5.3%	\$19,558,519	\$17,374,460	\$2,184,060	12.6%	\$72,396,288	\$67,533,406	\$4,862,883	7.2%
9	10/29/2011	\$52,206,644	\$49,775,287	\$2,431,357	4.9%	\$21,504,565	\$18,402,209	\$3,102,356	16.9%	\$73,711,209	\$68,177,496	\$5,533,713	8.1%
10	11/5/2011	\$56,265,310	\$53,337,848	\$2,927,462	5.5%	\$20,870,086	\$17,321,908	\$3,548,179	20.5%	\$77,135,396	\$70,659,756	\$6,475,641	9.2%
11	11/12/2011	\$55,682,645	\$52,285,479	\$3,397,166	6.5%	\$17,862,404	\$16,388,690	\$1,473,714	9.0%	\$73,545,049	\$68,674,169	\$4,870,880	7.1%
12	11/19/2011	\$54,978,079	\$52,424,036	\$2,554,043	4.9%	\$17,879,985	\$16,138,022	\$1,741,963	10.8%	\$72,858,064	\$68,562,058	\$4,296,006	6.3%
13	11/26/2011	\$53,942,448	\$51,262,518	\$2,679,930	5.2%	\$16,877,145	\$15,967,075	\$910,070	5.7%	\$70,819,593	\$67,229,593	\$3,590,000	5.3%
14	12/3/2011	\$57,153,469	\$56,385,259	\$768,210	1.4%	\$18,298,636	\$17,553,175	\$745,461	4.2%	\$75,452,105	\$73,938,434	\$1,513,671	2.0%
15	12/10/2011	\$55,318,284	\$56,540,048	(\$1,221,764)	-2.2%	\$19,033,326	\$17,703,352	\$1,329,975	7.5%	\$74,351,610	\$74,243,400	\$108,211	0.1%
16	12/17/2011	\$58,612,629	\$57,699,991	\$912,638	1.6%	\$20,045,279	\$18,465,282	\$1,579,997	8.6%	\$78,657,908	\$76,165,273	\$2,492,635	3.3%
17	12/24/2011	\$60,628,256	\$59,800,480	\$827,776	1.4%	\$22,572,986	\$19,635,771	\$2,937,215	15.0%	\$83,201,242	\$79,436,251	\$3,764,991	4.7%
18	12/31/2011	\$63,065,007	\$61,423,121	\$1,641,886	2.7%	\$19,948,521	\$26,122,257	(\$6,173,736)	-23.6%	\$83,013,528	\$87,545,378	(\$4,531,850)	-5.2%
19	1/7/2012	\$60,479,896	\$60,976,653	(\$496,757)	-0.8%	\$17,331,888	\$33,521,570	(\$16,189,682)	-48.3%	\$77,811,784	\$94,498,223	(\$16,686,439)	-17.7%
20	1/14/2012	\$57,689,526	\$50,099,433	\$7,590,093	15.2%	\$17,568,732	\$17,114,637	\$454,096	2.7%	\$75,258,258	\$67,214,070	\$8,044,189	12.0%
21	1/21/2012	\$58,704,854	\$53,143,646	\$5,561,208	10.5%	\$19,886,540	\$18,091,208	\$1,795,332	9.9%	\$78,591,394	\$71,234,854	\$7,356,540	10.3%
22	1/28/2012	\$57,611,325	\$54,096,128	\$3,515,197	6.5%	\$20,641,697	\$17,446,156	\$3,195,542	18.3%	\$78,253,022	\$71,542,284	\$6,710,739	9.4%
23	2/4/2012	\$65,553,366	\$53,433,592	\$12,119,774	22.7%	\$23,689,855	\$17,388,581	\$6,301,274	36.2%	\$89,243,221	\$70,822,173	\$18,421,048	26.0%
24	2/11/2012	\$75,070,485	\$60,277,094	\$14,793,391	24.5%	\$28,361,583	\$18,233,038	\$10,128,545	55.6%	\$103,432,068	\$78,510,132	\$24,921,936	31.7%
25	2/18/2012		\$61,536,763				\$19,387,518				\$80,924,281		
26	2/25/2012		\$59,046,203				\$20,054,404				\$79,100,607		
27	3/3/2012		\$60,537,060				\$19,478,807				\$80,015,867		
28	3/10/2012		\$59,997,361				\$19,601,658				\$79,599,019		
29	3/17/2012		\$57,835,554				\$21,189,563				\$79,025,117		
30	3/24/2012		\$57,911,940				\$29,729,651				\$87,641,591		
31	3/31/2012		\$60,407,139				\$19,519,264				\$79,926,403		
32	4/7/2012		\$60,704,285				\$19,455,317				\$80,159,602		
33	4/14/2012		\$57,663,398				\$17,866,867				\$75,530,265		
34	4/21/2012		\$56,740,216				\$17,429,326				\$74,169,542		
35	4/28/2012		\$58,042,011				\$17,104,548				\$75,146,559		
36	5/5/2012		\$66,509,159				\$17,744,833				\$84,253,992		
37	5/12/2012		\$53,769,716				\$17,783,942				\$71,553,658		
38	5/19/2012		\$53,704,228				\$18,623,882				\$72,328,110		
39	5/26/2012		\$52,310,134				\$19,115,921				\$71,426,055		
40	6/2/2012		\$53,256,725				\$18,462,603				\$71,719,328		
41	6/9/2012		\$54,293,614				\$17,213,019				\$71,506,633		
42	6/16/2012		\$52,688,230				\$17,534,413				\$70,222,643		

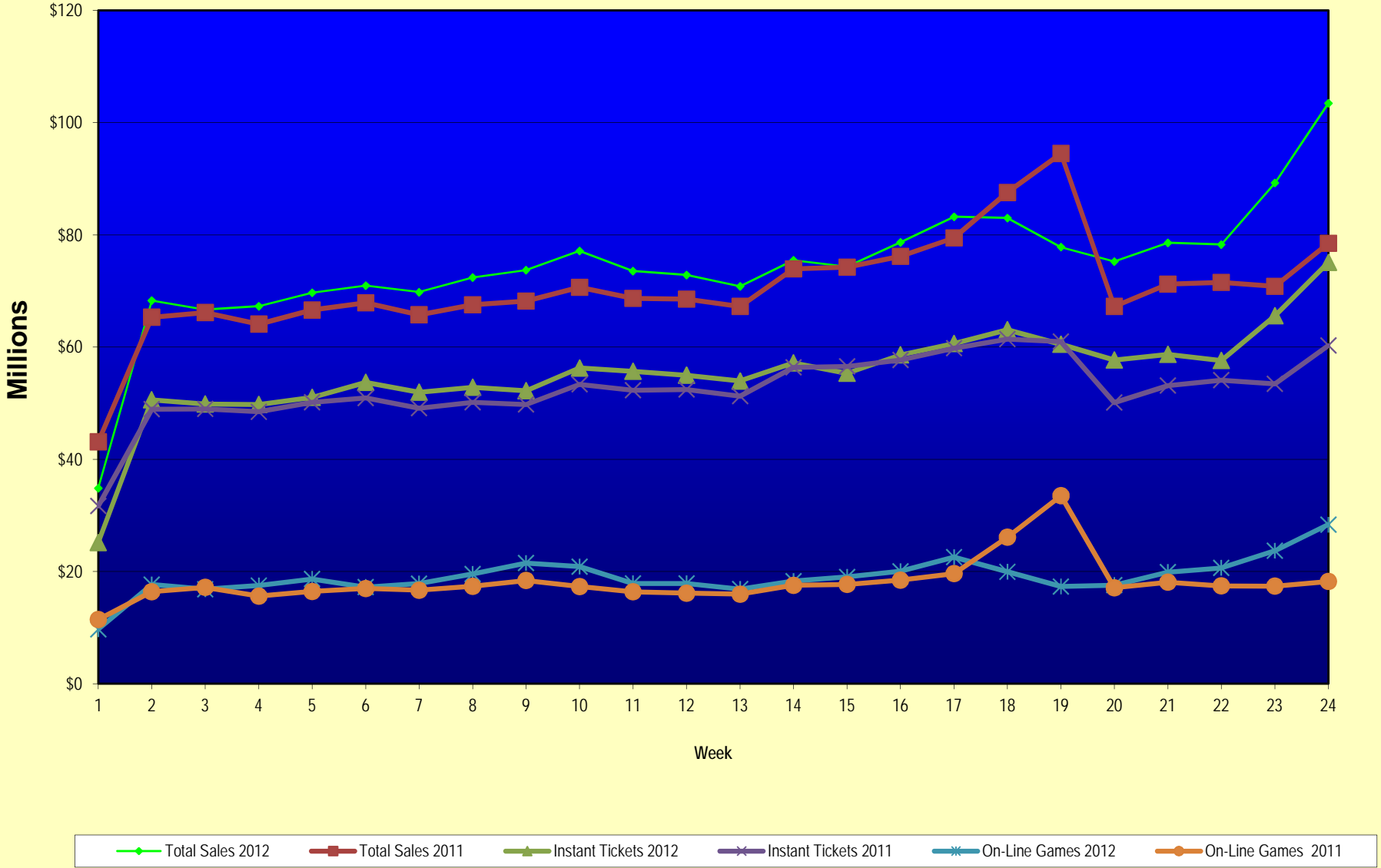
Note: Week 1 is not a full week of sales as this report is prepared on a Fiscal Year basis.

Texas Lottery Commission
Fiscal Year Over Year Change in Sales
Unaudited
FY 2012 Compared to FY 2011

Week	FY 2012 Week Ending	INSTANT TICKETS				ON-LINE GAMES				TOTAL SALES			
		FY 2012	FY 2011	Difference	% change - Cumulative Sales	FY 2012	FY 2011	Difference	% change - Cumulative Sales	FY 2012	FY 2011	Difference	% change - Cumulative Sales
43	6/23/2012		\$53,174,595				\$17,086,937				\$70,261,532		
44	6/30/2012		\$53,687,509				\$18,406,785				\$72,094,294		
45	7/7/2012		\$53,054,685				\$16,211,989				\$69,266,674		
46	7/14/2012		\$51,161,290				\$16,945,733				\$68,107,023		
47	7/21/2012		\$50,807,750				\$17,362,213				\$68,169,963		
48	7/28/2012		\$51,277,179				\$18,870,764				\$70,147,943		
49	8/4/2012		\$53,320,489				\$20,922,034				\$74,242,523		
50	8/11/2012		\$50,914,022				\$19,467,124				\$70,381,146		
51	8/18/2012		\$49,905,898				\$17,419,045				\$67,324,943		
52	8/25/2012		\$49,424,242				\$16,837,474				\$66,261,716		
	8/31/2012		\$27,274,804				\$8,600,118				\$35,874,922		
Total thru Current Week		\$1,327,847,994	\$1,261,310,481	\$66,537,513	5.3%	\$457,399,043	\$433,577,708	\$23,821,336	5.5%	\$1,785,247,037	\$1,694,888,189	\$90,358,849	5.3%
Fiscal Year Total		\$1,327,847,994	\$2,842,266,680			\$457,399,043	\$969,003,455			\$1,785,247,037	\$3,811,270,135		

** FY 2011 includes 4 days; FY 2012 includes 3 days

Texas Lottery Commission Fiscal Year Over Year Change in Sales



Note: Week 1 is not a full week of sales as this report is prepared on a Fiscal Year basis.

Texas Lottery Commission
Instant Tickets by Price Point
Sales, Prize Expense, Sales Contribution and Payout Percentage With Year Over Year Changes
Unaudited

Fiscal Year	Price Point	# of Active Games	FY Sales	% of Instant Ticket Sales	Year over Year Change in Sales	FY Prize Expense	Year over Year Change in Prize Expense	FY Sales Contribution	Year over Year Change in Contribution	Average Prize Payout %	Year over Year Change in Payout %
2011	\$1.00	29	95,048,804	7.5%		58,446,269		36,602,535		61.5%	2.3%
thru	\$2.00	27	179,181,996	14.2%		117,487,208		61,694,788		65.6%	0.7%
2/12/2011	\$3.00	18	153,448,949	12.2%		100,668,011		52,780,938		65.6%	0.0%
	\$5.00	38	400,744,570	31.8%		272,796,404		127,948,166		68.1%	0.1%
	\$7.00	7	56,065,352	4.4%		38,113,681		17,951,671		68.0%	0.0%
	\$10.00	13	174,880,560	13.9%		123,863,889		51,016,671		70.8%	1.3%
	\$20.00	5	158,750,800	12.6%		117,789,565		40,961,235		74.2%	1.4%
	\$50.00	2	43,189,450	3.4%		33,534,273		9,655,177		77.6%	4.2%
Total		139	\$1,261,310,481			\$862,699,300		\$398,611,181		68.4%	0.9%
2012	\$1.00	29	101,462,842	7.6%		62,138,908		39,323,934		61.2%	0.8%
thru	\$2.00	29	182,356,912	13.7%		118,558,145		63,798,767		65.0%	-0.8%
2/11/2012	\$3.00	16	161,197,161	12.1%		105,692,368		55,504,793		65.6%	0.0%
	\$5.00	37	423,716,930	31.9%		288,331,903		135,385,027		68.0%	0.2%
	\$7.00	4	18,199,419	1.4%		12,375,487		5,823,932		68.0%	0.0%
	\$10.00	15	208,902,320	15.7%		147,078,043		61,824,277		70.4%	-0.9%
	\$20.00	6	181,382,860	13.7%		135,320,081		46,062,779		74.6%	-0.1%
	\$50.00	2	50,629,550	3.8%		39,320,400		11,309,150		77.7%	0.0%
Total		138	\$1,327,847,994			\$908,815,336		\$419,032,658		68.4%	-0.1%
Variance	\$1.00	0	6,414,038		6.7%	3,692,639	6.3%	2,721,399	7.4%	-0.25%	
2012 to	\$2.00	2	3,174,916		1.8%	1,070,937	0.9%	2,103,979	3.4%	-0.55%	
2011	\$3.00	-2	7,748,212		5.0%	5,024,358	5.0%	2,723,854	5.2%	-0.04%	
	\$5.00	-1	22,972,360		5.7%	15,535,499	5.7%	7,436,861	5.8%	-0.02%	
	\$7.00	-3	-37,865,933		-67.5%	-25,738,194	-67.5%	-12,127,739	-67.6%	0.02%	
	\$10.00	2	34,021,760		19.5%	23,214,154	18.7%	10,807,606	21.2%	-0.42%	
	\$20.00	1	22,632,060		14.3%	17,530,516	14.9%	5,101,544	12.5%	0.41%	
	\$50.00	0	7,440,100		17.2%	5,786,127	17.3%	1,653,973	17.1%	0.02%	
Total		-1	\$66,537,513		5.3%	\$46,116,035	5.3%	\$20,421,478	5.1%	0.05%	

Notes - Instant Ticket Variances

Texas Lottery Commission
Instant Tickets by Price Point
Sales, Prize Expense, Sales Contribution and Payout Percentage With Year Over Year Changes
 Unaudited

			FY 2012		FY 2011	Difference
Sales	\$1 - \$7		\$886,933,264		\$884,489,671	\$2,443,593
Prize Exp.	\$1 - \$7		\$587,096,812		\$587,511,573	-\$414,761
Sales Cont.	\$1 - \$7		\$299,836,452		\$296,978,098	\$2,858,354
Prize Exp. %	\$1 - \$7		66.2%		66.4%	-0.2%
			FY 2012		FY 2011	Difference
Sales	\$10 - \$50		\$440,914,730		\$376,820,810	\$64,093,920
Prize Exp.	\$10 - \$50		\$321,718,524		\$275,187,727	\$46,530,797
Sales Cont.	\$10 - \$50		\$119,196,206		\$101,633,083	\$17,563,123
Prize Exp. %	\$10 - \$50		73.0%		73.0%	-0.1%
			FY 2012		FY 2011	Difference
Sales	Instant		\$1,327,847,994		\$1,261,310,481	\$66,537,513
Prize Exp.	Instant		\$908,815,336		\$862,699,300	\$46,116,035
Sales Cont.	Instant		\$419,032,658		\$398,611,181	\$20,421,478
Prize Exp. %	Instant		68.4%		68.4%	0.0%

			FY 2012		FY 2011	Difference
Sales	\$1 - \$10		\$1,095,835,584		\$1,059,370,231	\$36,465,353
Prize Exp.	\$1 - \$10		\$734,174,855		\$711,375,462	\$22,799,393
Sales Cont.	\$1 - \$10		\$361,660,729		\$347,994,769	\$13,665,960
Prize Exp. %	\$1 - \$10		67.0%		67.2%	-0.2%
			FY 2012		FY 2011	Difference
Sales	\$20 - \$50		\$232,012,410		\$201,940,250	\$30,072,160
Prize Exp.	\$20 - \$50		\$174,640,481		\$151,323,838	\$23,316,643
Sales Cont.	\$20 - \$50		\$57,371,929		\$50,616,412	\$6,755,517
Prize Exp. %	\$20 - \$50		75.3%		74.9%	0.3%
			FY 2012		FY 2011	Difference
Sales	Instant		\$1,327,847,994		\$1,261,310,481	\$66,537,513
Prize Exp.	Instant		\$908,815,336		\$862,699,300	\$46,116,035
Sales Cont.	Instant		\$419,032,658		\$398,611,181	\$20,421,478
Prize Exp. %	Instant		68.4%		68.4%	0.0%

Texas Lottery Commission
Weekly Sales Summary
& Comparison to Previous Week
 Unaudited

	Week Ending 02/11/2012	% of Sales	Week Ending 02/04/2012	% of Sales	\$ change	% change
	<u>THIS WEEK</u>		<u>LAST WEEK</u>			
Total Sales	<u>\$103,432,068</u>		<u>\$89,243,221</u>		<u>\$14,188,847</u>	15.90%
Instant Tickets	<u>\$75,070,485</u>	72.6%	<u>\$65,553,366</u>	73.5%	<u>\$9,517,119</u>	14.52%
Lotto	\$3,569,296	3.5%	\$3,526,781	4.0%	\$42,515	1.21%
Pick 3	\$5,678,360	5.5%	\$5,493,300	6.2%	\$185,060	3.37%
Pick 3 Sum It Up	\$119,455	0.1%	\$112,992	0.1%	\$6,463	5.72%
Cash Five	\$1,321,397	1.3%	\$1,316,899	1.5%	\$4,498	0.34%
Texas Two Step	\$983,011	1.0%	\$2,230,312	2.5%	-\$1,247,301	-55.92%
Mega Millions	\$2,388,865	2.3%	\$2,212,907	2.5%	\$175,958	7.95%
Megaplier	\$562,554	0.5%	\$525,610	0.6%	\$36,944	7.03%
Daily 4	\$1,332,218	1.3%	\$1,315,424	1.5%	\$16,794	1.28%
Daily 4 Sum It Up	\$97,927	0.1%	\$96,711	0.1%	\$1,216	1.26%
Powerball	\$10,633,290	10.3%	\$6,186,774	6.9%	\$4,446,516	71.87%
Power Play	\$1,675,211	1.6%	\$672,146	0.8%	\$1,003,065	149.23%
Total Online Sales	<u>\$28,361,583</u>		<u>\$23,689,855</u>		<u>\$4,671,728</u>	19.72%

* Totals may not sum due to rounding.

Texas Lottery Commission
Weekly Sales Summary
Unaudited

INSTANT TICKETS
TOP TEN SELLING GAMES

For the Week Ending : 02/11/2012

Rank	Price Point	Game	Sales (Millions)
1	\$ 20	MAXIMUM MILLIONS	\$ 4.636
2	\$ 5	TRIPLE 7'S	\$ 4.224
3	\$ 10	BIG MONEY	\$ 3.914
4	\$ 50	CASINO ACTION	\$ 3.520
5	\$ 20	\$500,000,000 FRENZY	\$ 3.444
6	\$ 5	CHOCOLATE	\$ 3.205
7	\$ 3	BONUS CASHWORD	\$ 2.509
8	\$ 5	MONEY MULTIPLIER	\$ 2.266
9	\$ 3	LOTERIA	\$ 2.260
10	\$ 20	\$500,000,000 BLOCKBUSTER	\$ 2.240

Texas Lottery Commission
Prize Payout Tracking Report
Unaudited

Through Week Ending 02/11/2012

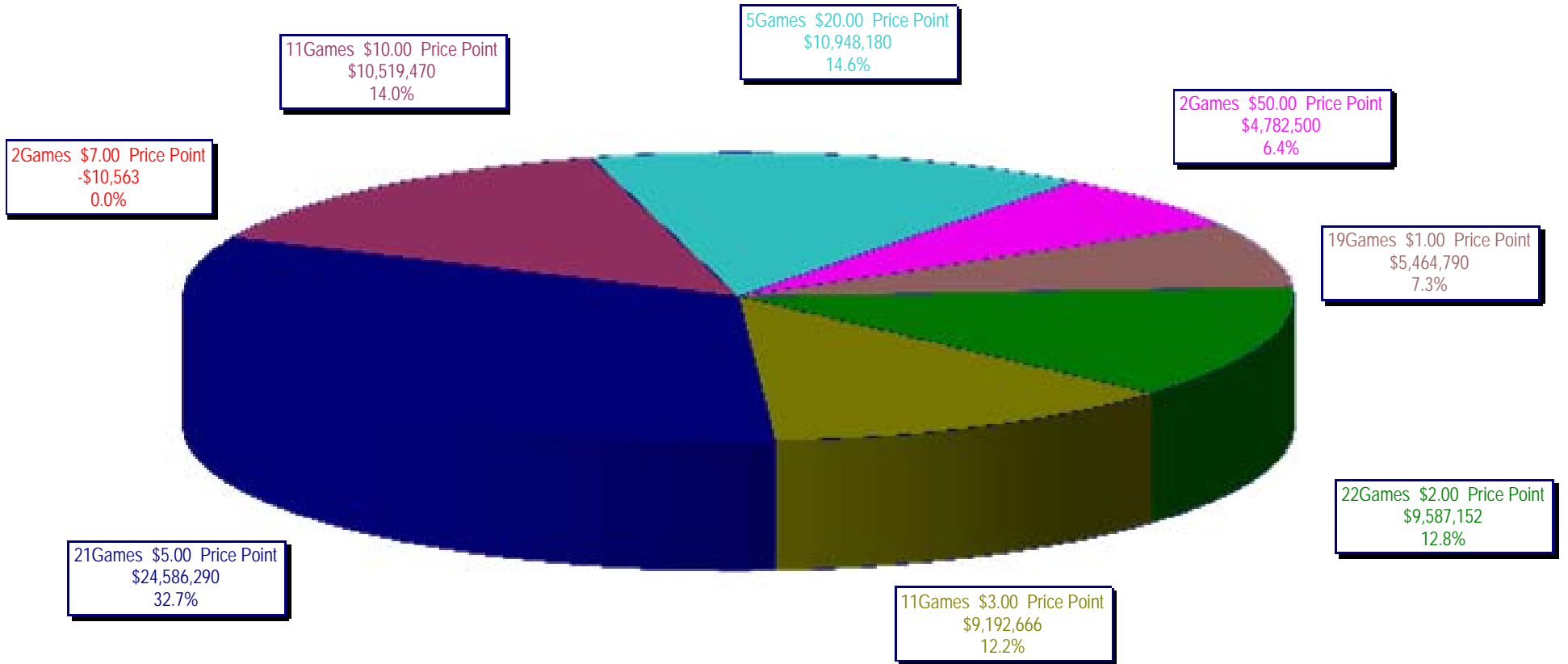
On-Line Sales

		FY Sales Through Week Ending 2/11/2012		FY Prize Expense Through Week Ending 2/11/2012	Actual* Prize Payout	Base Payout (Prize Pool)
Lotto	\$	79,099,698	\$	47,083,429	59.52%	50.00%
Pick 3		119,974,705		55,021,890	45.86%	50.00%
Pick 3 Sum It Up		2,451,715		1,152,062	46.99%	50.00%
Cash Five		29,227,896		15,213,968	52.05%	50.00%
Texas Two Step		29,262,946		14,585,173	49.84%	50.00%
Mega Millions		67,930,206		33,411,223	49.18%	50.00%**
Megaplier		15,052,314		8,357,375	55.52%	N/A
Daily 4		28,385,624		12,711,275	44.78%	50.00%
Daily 4 Sum It Up		2,094,180		839,215	40.07%	50.00%
Powerball		70,432,495		33,740,646	47.90%	50.00%**
Power Play		13,487,266		6,523,090	48.36%	N/A
Totals	\$	457,399,043	\$	228,639,345	49.99%	

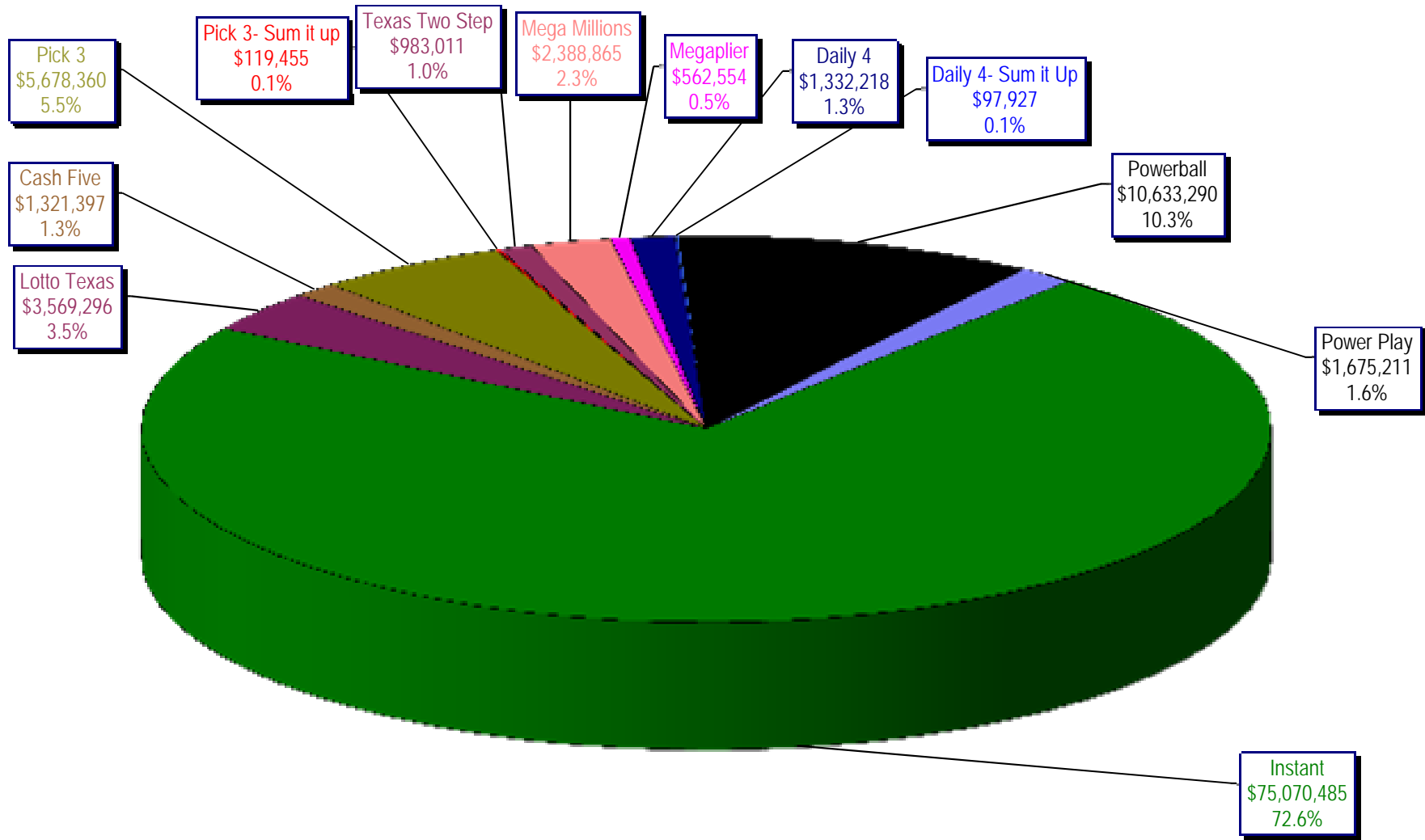
* Before Unclaimed Prizes

** Estimated; depends on # of guaranteed prizes won in Texas

Texas Lottery Commission
Instant Ticket Sales
For the Week Ending 02/11/12
(Unaudited)



**Texas Lottery Commission
All Game Sales
For the Week Ending 02/11/12
(Unaudited)**



Texas Lottery Commission - Weekly Sales Summary for FY 2012 (Unaudited)

Week Ended	Instant Games	New Games & Dates	Lotto Texas	Jackpot S		Pick 3	Pick 3 Sum It Up	Cash Five	Texas Two Step	Jackpot M TH		Mega Millions	Jackpot T F		Megaplier	Daily 4	Daily 4 Sum It Up	Powerball	Jackpot W S		Power Play	Total	Per Cap.
9/3/2011	52,421,985	1340 (\$1,N); 1310 (\$2, N) - 08/29/11	3,710,974	23	24	5,228,940	100,997	1,239,134	989,988	225	300	2,248,664	21	29	539,246	1,221,178	93,318	2,401,555	75	91	530,686	70,726,664	2.81
9/10/2011	50,591,068	1360 (\$3, N) - 09/05/11	3,329,350	25	4	5,103,026	99,259	1,198,563	935,771	450	200	2,387,766	37	44	557,225	1,180,505	88,443	2,295,315	107	20	506,631	68,272,921	2.71
9/17/2011	49,835,063	0	3,031,798	5	6	4,953,079	100,990	1,210,562	961,592	225	300	2,801,526	54	65	626,459	1,125,230	83,532	1,560,522	25	20	387,037	66,677,389	2.64
9/24/2011	49,777,138	1362(\$1, N); 1363(\$5,N); 1364(\$5,N) - 09/19/11	3,083,973	7	8	4,819,453	97,999	1,200,444	1,283,472	450	600	3,206,022	75	86	692,909	1,092,294	82,198	1,561,655	25	30	384,383	67,281,938	2.67
10/1/2011	51,040,274	1365(\$2,N) - 09/26/11	3,196,730	9	10	4,846,896	97,026	1,215,715	1,146,613	800	200	4,033,330	96	113	830,660	1,096,271	83,993	1,693,809	37	47	412,058	69,693,374	2.76
10/8/2011	53,715,157	1366(\$1,N) - 10/03/11	3,231,892	11	12	5,064,771	102,919	1,252,733	1,004,251	225	300	2,176,684	12	14	527,777	1,188,636	92,825	2,103,034	58	71	480,159	70,940,837	2.81
10/15/2011	51,942,121	1367 (\$7, N) - 10/10/11	3,230,925	13	14	4,776,985	99,008	1,214,385	1,337,436	450	625	2,260,036	22	30	542,787	1,132,415	84,772	2,613,215	86	105	563,017	69,797,101	2.77
10/22/2011	52,837,769	1369 (\$1, N); 1370 (\$5, N) - 10/17/11	3,250,317	15	16	4,784,201	98,306	1,202,768	1,887,302	825	1,050	2,386,255	39	48	561,705	1,130,353	83,722	3,477,867	124	148	695,724	72,396,288	2.87
10/29/2011	52,206,644	1371 (\$2, N) - 10/24/11	3,302,201	17	18	4,685,786	95,887	1,186,987	2,055,399	1,300	1,550	2,592,752	57	67	596,631	1,107,441	82,921	4,895,300	173	203	903,261	73,711,209	2.92
11/5/2011	56,265,310	1373 (\$10, N) - 10/31/11	3,570,825	19	20	5,165,835	105,793	1,240,514	910,036	200	200	2,497,308	78	12	583,481	1,222,706	92,619	4,617,172	245	20	863,799	77,135,396	3.06
11/12/2011	55,682,645	1375 (\$3, N); 1374 (\$1, N) - 11/07/11	3,673,137	21	22	5,298,645	109,575	1,268,630	961,349	225	200	2,362,698	15	22	552,133	1,235,272	92,025	1,861,697	25	35	447,243	73,545,049	2.92
11/19/2011	54,978,079	1376(\$2, N); 1377 (\$5, N) - 11/14/11	3,575,231	23	24	5,216,095	106,956	1,246,366	1,059,355	225	325	2,300,050	30	40	550,825	1,224,365	89,978	2,033,222	46	60	477,542	72,858,064	2.89
11/26/2011	53,942,448	1372 (\$5, N) - 11/21/11	3,499,908	25	26	4,943,420	100,352	1,179,174	998,175	500	200	2,377,399	47	55	555,760	1,215,090	90,416	1,527,546	20	25	389,905	70,819,593	2.81
12/3/2011	57,153,469	0	3,744,456	27	28	5,267,602	108,544	1,264,649	938,225	225	200	2,830,996	64	75	636,924	1,278,857	95,379	1,708,763	31	40	424,242	75,452,105	2.99
12/10/2011	55,318,284	1378 (\$1, N); 1322 (\$5, N) - 12/5/11; 1389 (\$1, N) - 12/6/11	3,666,072	29	30	5,168,509	106,265	1,243,957	1,030,979	225	325	3,462,326	87	100	736,281	1,235,834	89,131	1,850,570	52	67	443,403	74,351,610	2.95
12/17/2011	58,612,629	1383 (\$3,N) - 12/12/11	2,963,151	4	5	5,096,413	103,606	1,257,263	1,339,991	475	650	4,412,520	116	135	882,759	1,240,640	89,229	2,163,468	78	91	496,239	78,657,908	3.12
12/24/2011	60,628,256	1379 (\$1, N); 1317 (\$2, N); 1380 (\$5, N) - 12/19/11	3,265,301	6	7	5,257,800	105,568	1,269,335	943,509	200	225	5,729,832	152	173	1,095,360	1,263,815	88,757	2,933,837	104	125	619,872	83,201,242	3.30
12/31/2011	63,065,007	0	3,368,593	8	9	5,211,663	107,395	1,275,257	1,200,536	325	450	4,358,985	206	12	878,865	1,244,035	88,079	1,788,226	20	25	426,888	83,013,528	3.29
1/7/2012	60,479,896	1381 (\$5,N); 1277 (\$50,N) - 1/3/12; 1429 (\$5,N); 1401 (\$10, N) - 1/4/12	3,193,532	10	11	5,246,112	108,060	1,281,653	1,135,472	625	200	2,298,815	15	25	550,191	1,240,736	90,116	1,763,484	30	44	423,718	77,811,784	3.09
1/14/2012	57,689,526	1382 (\$2,N); 1232 (\$10, N) - 1/9/12	3,259,338	12	13	5,061,130	103,687	1,270,289	1,059,875	225	350	2,542,675	33	42	587,013	1,229,792	87,637	1,921,683	54	66	445,614	75,258,258	2.98
1/21/2012	58,704,854	1384 (\$1,N) 1385 (\$5,N) - 1/16/12	3,310,397	14	15	5,033,947	104,874	1,252,621	1,422,729	500	650	2,696,266	50	60	594,142	1,204,955	88,136	3,611,989	80	100	566,485	78,591,394	3.12
1/28/2012	57,611,325	0	3,295,592	16	17	4,996,799	103,779	1,241,568	1,940,577	875	1,100	2,426,609	71	12	544,967	1,197,885	85,833	4,311,550	120	146	496,540	78,253,022	3.10
2/4/2012	65,553,366	1434 (\$2, N) 1142 (\$20, N) - 01/30/12	3,526,781	18	19	5,493,300	112,992	1,316,899	2,230,312	1,350	1,650	2,212,907	15	23	525,610	1,315,424	96,711	6,186,774	170	200	672,146	89,243,221	3.54
2/11/2012	75,070,485	1361 (\$5,N) 1362 (\$1, N) 1388 (\$3, N) - 02/06/12	3,569,296	20	21	5,678,360	119,455	1,321,397	983,011	200	225	2,388,865	32	41	562,554	1,332,218	97,927	10,633,290	250	325	1,675,211	103,432,068	4.10
weekly change	14.5%		1.2%			3.4%	5.7%	0.3%	-55.9%			8.0%			7.0%	1.3%	1.3%	71.9%			149.2%	15.9%	
	SALES		SALES			SALES	SALES	SALES	SALES			SALES	SALES	SALES	SALES	SALES	SALES	SALES	SALES	SALES	SALES	% of Sales	
Startup to date	43,203,206,196		10,987,105,757			4,247,335,026	25,755,048	2,350,136,557	607,097,413			1,553,361,931			355,187,485	229,388,313	25,063,619	226,824,379			49,750,611	64,068,346,304	100.0%
Calendar Year to date	375,109,452		20,154,936			31,509,646	652,846	7,684,427	8,771,976			14,566,137			3,364,477	7,521,010	546,358	28,428,770			4,279,714	502,589,747	100.0%
Fiscal Year to date 2012	1,327,847,994		79,099,698			119,974,705	2,451,715	29,227,896	29,262,946			67,930,206			15,052,314	28,385,624	2,094,180	70,432,495			13,487,266	1,785,247,037	100.0%