



WEEKLY SALES SUMMARY

Unaudited

Week Ending: 02/14/2009

Texas Lottery Commission
Fiscal Year to Date Sales Comparison
Unaudited

Through the week ending 02/14/2009 (24 weeks)

Sales by Game	FY 2007 *	FY 2008 **	FY 2009	\$ Change		% Change	
				FY 2009 to FY 2007	FY 2009 to FY 2008	FY 2009 to FY 2007	FY 2009 to FY 2008
Instant	\$ 1,313,335,586	\$ 1,306,291,025	\$ 1,263,325,796	\$ -50,009,790	\$ -42,965,229	-3.8%	-3.3%
Lotto Texas	101,398,368	98,961,358	85,093,919	-16,304,449	-13,867,439	-16.1%	-14.0%
Pick 3	145,569,397	132,070,421	130,084,784	-15,484,614	-1,985,637	-10.6%	-1.5%
Pick 3 Sum It Up	-	2,608,208	2,751,198	2,751,198	142,990	-	5.5%
Cash 5	40,781,166	35,768,215	32,724,115	-8,057,051	-3,044,100	-19.8%	-8.5%
Texas Two Step	24,904,234	19,239,844	21,143,924	-3,760,310	1,904,080	-15.1%	9.9%
Mega Millions	69,812,412	73,692,705	78,025,420	8,213,008	4,332,715	11.8%	5.9%
Megaplier	17,042,542	17,846,957	18,554,291	1,511,749	707,334	8.9%	4.0%
Daily 4	-	19,296,410	19,922,021	19,922,021	625,612	-	3.2%
Daily 4 Sum It Up	-	4,733,486	2,509,903	2,509,903	-2,223,583	-	-47.0%
Total	\$ 1,712,843,705	\$ 1,710,508,628	\$ 1,654,135,369	\$ -58,708,336	\$ -56,373,259	-3.4%	-3.3%

* 3 extra days in 2007 ** 2 extra days in 2008

Texas Lottery Commission
Fiscal Year Over Year Change in Sales
Unaudited
FY 2009 Compared to FY 2008

Week	FY 2009 Week Ending	INSTANT TICKETS				ON-LINE GAMES				TOTAL SALES			
		FY 2009	FY 2008	Difference	% change - Cumulative Sales	FY 2009	FY 2008	Difference	% change - Cumulative Sales	FY 2009	FY 2008	Difference	% change - Cumulative Sales
1	9/6/2008**	\$44,890,104	\$62,376,229	(\$17,486,125)	-28.0%	\$14,722,011	\$19,372,224	(\$4,650,213)	-24.0%	\$59,612,115	\$81,748,453	(\$22,136,338)	-27.1%
2	9/13/2008	\$46,309,551	\$52,458,866	(\$6,149,315)	-20.6%	\$13,704,860	\$16,926,163	(\$3,221,303)	-21.7%	\$60,014,411	\$69,385,029	(\$9,370,618)	-20.8%
3	9/20/2008	\$42,923,171	\$49,998,934	(\$7,075,763)	-18.6%	\$12,291,263	\$15,792,283	(\$3,501,020)	-21.8%	\$55,214,434	\$65,791,217	(\$10,576,783)	-19.4%
4	9/27/2008	\$47,042,801	\$49,894,175	(\$2,851,374)	-15.6%	\$14,222,339	\$14,800,514	(\$578,175)	-17.9%	\$61,265,140	\$64,694,689	(\$3,429,549)	-16.2%
5	10/4/2008	\$50,747,162	\$53,486,863	(\$2,739,701)	-13.5%	\$15,784,472	\$16,618,430	(\$833,958)	-15.3%	\$66,531,634	\$70,105,293	(\$3,573,659)	-14.0%
6	10/11/2008	\$49,763,789	\$50,918,020	(\$1,154,231)	-11.7%	\$15,622,498	\$15,601,410	\$21,088	-12.9%	\$65,386,287	\$66,519,430	(\$1,133,143)	-12.0%
7	10/18/2008	\$49,299,053	\$50,532,253	(\$1,233,200)	-10.5%	\$15,167,940	\$15,682,666	(\$514,726)	-11.6%	\$64,466,993	\$66,214,919	(\$1,747,926)	-10.7%
8	10/25/2008	\$49,977,581	\$50,347,450	(\$369,869)	-9.3%	\$14,525,843	\$15,586,516	(\$1,060,673)	-11.0%	\$64,503,424	\$65,933,966	(\$1,430,542)	-9.7%
9	11/1/2008	\$50,346,542	\$53,953,733	(\$3,607,191)	-9.0%	\$14,838,845	\$16,775,983	(\$1,937,139)	-11.1%	\$65,185,387	\$70,729,716	(\$5,544,330)	-9.5%
10	11/8/2008	\$54,860,087	\$53,635,090	\$1,224,997	-7.9%	\$16,057,069	\$15,912,791	\$144,278	-9.9%	\$70,917,156	\$69,547,881	\$1,369,275	-8.3%
11	11/15/2008	\$53,484,812	\$51,254,401	\$2,230,411	-6.8%	\$15,829,819	\$15,797,076	\$32,744	-9.0%	\$69,314,631	\$67,051,477	\$2,263,155	-7.3%
12	11/22/2008	\$52,806,511	\$50,897,817	\$1,908,694	-5.9%	\$16,460,748	\$15,801,720	\$659,028	-7.9%	\$69,267,259	\$66,699,537	\$2,567,722	-6.4%
13	11/29/2008	\$52,199,741	\$53,913,115	(\$1,713,374)	-5.7%	\$17,397,576	\$17,055,505	\$342,072	-7.1%	\$69,597,317	\$70,968,620	(\$1,371,303)	-6.0%
14	12/6/2008	\$56,731,851	\$55,702,697	\$1,029,154	-5.1%	\$20,363,789	\$17,900,717	\$2,463,073	-5.5%	\$77,095,640	\$73,603,414	\$3,492,227	-5.2%
15	12/13/2008	\$54,109,617	\$53,703,516	\$406,101	-4.7%	\$22,952,228	\$17,820,841	\$5,131,387	-3.0%	\$77,061,845	\$71,524,357	\$5,537,488	-4.3%
16	12/20/2008	\$55,777,328	\$57,592,769	(\$1,815,441)	-4.6%	\$15,833,517	\$17,436,233	(\$1,602,716)	-3.4%	\$71,610,845	\$75,029,002	(\$3,418,157)	-4.3%
17	12/27/2008	\$57,597,885	\$57,696,003	(\$98,118)	-4.3%	\$15,851,771	\$14,743,680	\$1,108,091	-2.9%	\$73,449,656	\$72,439,683	\$1,009,973	-4.0%
18	1/3/2009	\$57,582,115	\$57,935,952	(\$353,837)	-4.1%	\$16,900,028	\$15,704,450	\$1,195,578	-2.3%	\$74,482,143	\$73,640,402	\$841,741	-3.7%
19	1/10/2009	\$54,250,945	\$55,360,542	(\$1,109,597)	-4.0%	\$16,203,220	\$15,691,540	\$511,680	-2.0%	\$70,454,165	\$71,052,082	(\$597,917)	-3.5%
20	1/17/2009	\$51,625,339	\$54,920,166	(\$3,294,827)	-4.1%	\$15,701,605	\$16,259,669	(\$558,064)	-2.1%	\$67,326,944	\$71,179,835	(\$3,852,891)	-3.6%
21	1/24/2009	\$52,789,573	\$54,439,890	(\$1,650,317)	-4.1%	\$15,897,473	\$16,691,724	(\$794,251)	-2.2%	\$68,687,046	\$71,131,614	(\$2,444,568)	-3.6%
22	1/31/2009	\$55,453,471	\$57,464,382	(\$2,010,911)	-4.0%	\$16,908,272	\$17,968,227	(\$1,059,955)	-2.4%	\$72,361,743	\$75,432,609	(\$3,070,866)	-3.7%
23	2/7/2009	\$62,247,711	\$60,715,019	\$1,532,692	-3.7%	\$18,354,314	\$20,097,338	(\$1,743,025)	-2.7%	\$80,602,025	\$80,812,357	(\$210,333)	-3.5%
24	2/14/2009	\$60,509,056	\$57,093,143	\$3,415,913	-3.3%	\$19,218,078	\$22,179,908	(\$2,961,831)	-3.3%	\$79,727,134	\$79,273,051	\$454,083	-3.3%
25	2/21/2009		\$57,627,047				\$27,230,539				\$84,857,586		
26	2/28/2009		\$55,591,667				\$17,016,118				\$72,607,785		
27	3/7/2009		\$56,837,481				\$16,690,193				\$73,527,674		
28	3/14/2009		\$54,587,112				\$16,448,165				\$71,035,277		
29	3/21/2009		\$53,098,937				\$16,639,184				\$69,738,121		
30	3/28/2009		\$53,933,689				\$17,698,625				\$71,632,314		
31	4/4/2009		\$57,598,982				\$17,665,411				\$75,264,393		
32	4/11/2009		\$53,954,185				\$15,860,784				\$69,814,969		
33	4/18/2009		\$53,946,736				\$16,452,676				\$70,399,412		
34	4/25/2009		\$51,533,006				\$16,873,949				\$68,406,955		
35	5/2/2009		\$53,250,568				\$18,202,103				\$71,452,671		
36	5/9/2009		\$54,060,849				\$18,422,562				\$72,483,411		
37	5/16/2009		\$54,010,641				\$20,728,360				\$74,739,001		
38	5/23/2009		\$50,377,032				\$15,461,384				\$65,838,416		
39	5/30/2009		\$49,545,080				\$15,175,370				\$64,720,450		
40	6/6/2009		\$53,702,986				\$15,982,166				\$69,685,152		

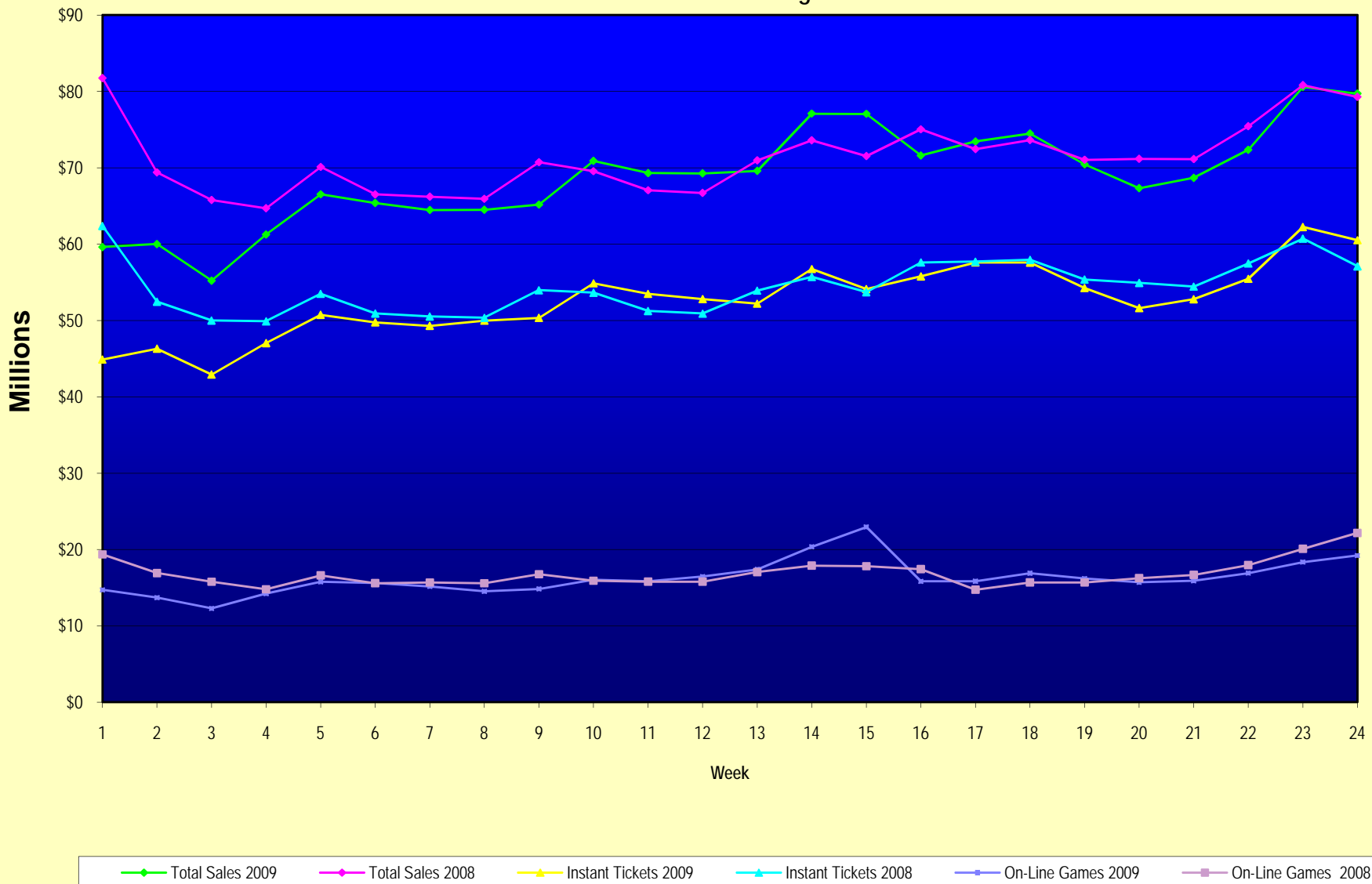
Note: Week 1 is not a full week of sales as this report is prepared on a Fiscal Year basis.

Texas Lottery Commission
Fiscal Year Over Year Change in Sales
Unaudited
FY 2009 Compared to FY 2008

Week	FY 2009 Week Ending	INSTANT TICKETS				ON-LINE GAMES				TOTAL SALES			
		FY 2009	FY 2008	Difference	% change - Cumulative Sales	FY 2009	FY 2008	Difference	% change - Cumulative Sales	FY 2009	FY 2008	Difference	% change - Cumulative Sales
41	6/13/2009		\$51,171,483				\$16,589,087				\$67,760,570		
42	6/20/2009		\$50,650,362				\$15,728,484				\$66,378,846		
43	6/27/2009		\$49,258,266				\$15,250,905				\$64,509,171		
44	7/4/2009		\$53,393,355				\$16,270,619				\$69,663,974		
45	7/11/2009		\$53,127,756				\$16,914,922				\$70,042,678		
46	7/18/2009		\$51,593,146				\$17,752,738				\$69,345,884		
47	7/25/2009		\$49,902,181				\$16,706,145				\$66,608,326		
48	8/1/2009		\$49,605,420				\$16,254,383				\$65,859,803		
49	8/8/2009		\$50,961,907				\$16,770,496				\$67,732,403		
50	8/15/2009		\$49,452,511				\$16,749,487				\$66,201,998		
51	8/22/2009		\$49,249,518				\$17,286,302				\$66,535,820		
52	8/29/2009		\$49,468,928				\$18,109,997				\$67,578,925		
53	9/5/2009		\$6,054,239				\$493,109				\$6,547,348		
Total thru Current Week		\$1,263,325,796	\$1,306,291,025	(\$42,965,229)	-3.3%	\$390,809,573	\$404,217,603	(\$13,408,030)	-3.3%	\$1,654,135,369	\$1,710,508,628	(\$56,373,259)	-3.3%
Fiscal Year Total		\$1,263,325,796	\$2,783,836,095			\$390,809,573	\$887,641,858			\$1,654,135,369	\$3,671,477,953		

** FY 2009 includes 6 days; FY 2008 includes 8 days
FY 2009 average daily sales are \$9,242,258. Two days at average daily sales are \$18,484,516.

Texas Lottery Commission Fiscal Year Over Year Change in Sales



Note: Week 1 is not a full week of sales as this report is prepared on a Fiscal Year basis.

Texas Lottery Commission
Instant Tickets by Price Point
Sales, Prize Expense, Sales Contribution and Payout Percentage With Year Over Year Changes
Unaudited

Fiscal Year	Price Point	# of Active Games	FY Sales	% of Instant Ticket Sales	Year over Year Change in Sales	FY Prize Expense	Year over Year Change in Prize Expense	FY Sales Contribution	Year over Year Change in Contribution	Average Prize Payout %	Year over Year Change in Payout %
2008	\$1.00	39	112,677,282	8.6%		67,688,196		44,989,086		60.1%	0.0%
thru	\$2.00	46	215,097,502	16.5%		140,145,735		74,951,767		65.2%	0.5%
2/16/2008	\$3.00	13	105,455,427	8.1%		69,354,680		36,100,747		65.8%	-0.1%
	\$5.00	39	360,477,335	27.6%		244,044,844		116,432,491		67.7%	-0.4%
	\$7.00	11	87,097,808	6.7%		59,229,990		27,867,818		68.0%	0.1%
	\$10.00	17	199,737,866	15.3%		138,776,382		60,961,484		69.5%	-1.4%
	\$20.00	7	77,679,640	5.9%		55,854,291		21,825,349		71.9%	-0.1%
	\$25.00	2	41,956,575	3.2%		30,462,840		11,493,735		72.6%	0.3%
	\$30.00	3	26,807,040	2.1%		19,400,093		7,406,947		72.4%	0.1%
	\$50.00	2	79,304,550	6.1%		57,212,457		22,092,093		72.1%	0.0%
Total		179	\$1,306,291,025			\$882,169,508		\$424,121,517		67.5%	
2009	\$1.00	38	112,506,479	8.9%		67,676,546		44,829,933		60.2%	0.1%
thru	\$2.00	33	218,677,481	17.3%		142,342,043		76,335,438		65.1%	-0.3%
2/14/2009	\$3.00	14	134,542,671	10.6%		89,143,966		45,398,705		66.3%	0.8%
	\$5.00	37	389,582,399	30.8%		265,117,922		124,464,477		68.1%	0.2%
	\$7.00	7	56,677,761	4.5%		38,546,060		18,131,701		68.0%	0.0%
	\$10.00	15	170,829,890	13.5%		118,866,766		51,963,124		69.6%	-0.6%
	\$20.00	7	118,219,540	9.4%		84,840,344		33,379,196		71.8%	0.0%
	\$25.00	1	2,373,725	0.2%		1,726,525		647,200		72.7%	0.2%
	\$30.00	3	9,904,050	0.8%		7,176,889		2,727,161		72.5%	0.1%
	\$50.00	3	50,011,800	4.0%		36,151,540		13,860,260		72.3%	0.2%
Total		158	\$1,263,325,796			\$851,588,602		\$411,737,194		67.4%	
Variance	\$1.00	-1	-170,803		-0.2%	-11,649	0.0%	-159,154	-0.4%	0.08%	
2009 to	\$2.00	-13	3,579,979		1.7%	2,196,309	1.6%	1,383,670	1.8%	-0.06%	
2008	\$3.00	1	29,087,244		27.6%	19,789,286	28.5%	9,297,958	25.8%	0.49%	
	\$5.00	-2	29,105,064		8.1%	21,073,078	8.6%	8,031,986	6.9%	0.35%	
	\$7.00	-4	-30,420,047		-34.9%	-20,683,930	-34.9%	-9,736,117	-34.9%	0.01%	
	\$10.00	-2	-28,907,976		-14.5%	-19,909,616	-14.3%	-8,998,360	-14.8%	0.10%	
	\$20.00	0	40,539,900		52.2%	28,986,053	51.9%	11,553,847	52.9%	-0.14%	
	\$25.00	-1	-39,582,850		-94.3%	-28,736,315	-94.3%	-10,846,535	-94.4%	0.13%	
	\$30.00	0	-16,902,990		-63.1%	-12,223,203	-63.0%	-4,679,787	-63.2%	0.09%	
	\$50.00	1	-29,292,750		-36.9%	-21,060,917	-36.8%	-8,231,833	-37.3%	0.14%	
Total		-21	-\$42,965,229		-3.3%	-\$30,580,905	-3.5%	-\$12,384,324	-2.9%	-0.12%	

Texas Lottery Commission
Instant Tickets by Price Point
Sales, Prize Expense, Sales Contribution and Payout Percentage With Year Over Year Changes
Unaudited

Notes - Instant Ticket Variances

		FY 2009		FY 2008		Difference
Sales	\$1 - \$7		\$911,986,791		\$880,805,354	\$31,181,437
Prize Exp.	\$1 - \$7		\$602,826,538		\$580,463,444	\$22,363,093
Sales Cont.	\$1 - \$7		\$309,160,253		\$300,341,910	\$8,818,344
Prize Exp. %	\$1 - \$7		66.1%		65.9%	0.2%
		FY 2009		FY 2008		Difference
Sales	\$10 - \$50		\$351,339,005		\$425,485,671	-\$74,146,666
Prize Exp.	\$10 - \$50		\$248,762,065		\$301,706,063	-\$52,943,999
Sales Cont.	\$10 - \$50		\$102,576,940		\$123,779,608	-\$21,202,667
Prize Exp. %	\$10 - \$50		70.8%		70.9%	-0.1%
		FY 2009		FY 2008		Difference
Sales	Instant		\$1,263,325,796		\$1,306,291,025	-\$42,965,229
Prize Exp.	Instant		\$851,588,602		\$882,169,508	-\$30,580,905
Sales Cont.	Instant		\$411,737,194		\$424,121,517	-\$12,384,324
Prize Exp. %	Instant		67.4%		67.5%	-0.1%

		FY 2009		FY 2008		Difference
Sales	\$1 - \$10		\$1,082,816,681		\$1,080,543,220	\$2,273,461
Prize Exp.	\$1 - \$10		\$721,693,303		\$719,239,826	\$2,453,477
Sales Cont.	\$1 - \$10		\$361,123,378		\$361,303,394	-\$180,016
Prize Exp. %	\$1 - \$10		66.6%		66.6%	0.1%
		FY 2009		FY 2008		Difference
Sales	\$20 - \$50		\$180,509,115		\$225,747,805	-\$45,238,690
Prize Exp.	\$20 - \$50		\$129,895,299		\$162,929,681	-\$33,034,382
Sales Cont.	\$20 - \$50		\$50,613,816		\$62,818,124	-\$12,204,308
Prize Exp. %	\$20 - \$50		72.0%		72.2%	-0.2%
		FY 2009		FY 2008		Difference
Sales	Instant		\$1,263,325,796		\$1,306,291,025	-\$42,965,229
Prize Exp.	Instant		\$851,588,602		\$882,169,508	-\$30,580,905
Sales Cont.	Instant		\$411,737,194		\$424,121,517	-\$12,384,324
Prize Exp. %	Instant		67.4%		67.5%	-0.1%

Texas Lottery Commission
Weekly Sales Summary
& Comparison to Previous Week
 Unaudited

	Week Ending 02/14/2009		Week Ending 02/07/2009			
	<u>THIS WEEK</u>	% of Sales	<u>LAST WEEK</u>	% of Sales	<u>\$ change</u>	<u>% change</u>
Total Sales	<u>\$79,727,134</u>		<u>\$80,602,025</u>		<u>-\$874,891</u>	-1.09%
Instant Tickets	<u>\$60,509,056</u>	75.9%	<u>\$62,247,711</u>	77.2%	<u>-\$1,738,655</u>	-2.79%
Lotto Texas	\$4,119,193	5.2%	\$4,092,117	5.1%	\$27,076	0.66%
Pick 3	\$6,363,028	8.0%	\$6,336,717	7.9%	\$26,311	0.42%
Pick 3 Sum It Up	\$133,902	0.2%	\$134,543	0.2%	-\$642	-0.48%
Cash 5	\$1,445,616	1.8%	\$1,481,812	1.8%	-\$36,196	-2.44%
Texas Two Step	\$1,013,987	1.3%	\$842,746	1.0%	\$171,241	20.32%
Mega Millions	\$4,082,572	5.1%	\$3,509,032	4.4%	\$573,540	16.34%
Megaplier	\$928,813	1.2%	\$829,550	1.0%	\$99,263	11.97%
Daily 4	\$1,010,899	1.3%	\$1,007,529	1.3%	\$3,370	0.33%
Daily 4 Sum It Up	<u>\$120,069</u>	0.2%	<u>\$120,268</u>	0.1%	<u>-\$199</u>	-0.17%
Total Online Sales	<u>\$19,218,078</u>		<u>\$18,354,314</u>		<u>\$863,764</u>	4.71%

* Totals may not sum due to rounding.

Texas Lottery Commission
Weekly Sales Summary
Unaudited

INSTANT TICKETS
TOP TEN SELLING GAMES

For the Week Ending : 02/14/2009

Rank	Price Point	Game	Sales (Millions)
1	\$ 10	20 TIMES THE MONEY	\$ 4.636
2	\$ 5	POT O'GOLD	\$ 3.931
3	\$ 7	DAZZLIN' DIAMOND 7'S	\$ 2.822
4	\$ 20	SUPER SET FOR LIFE	\$ 2.754
5	\$ 3	BONUS CASHWORD	\$ 2.659
6	\$ 5	WELCOME TO FABULOUS LAS VEGAS	\$ 2.574
7	\$ 5	HOT HAND	\$ 2.138
8	\$ 10	SET FOR LIFE	\$ 2.061
9	\$ 50	\$130,000,000 PLATINUM PAYOUT	\$ 1.870
10	\$ 5	GIANT JUMBO BUCKS II	\$ 1.868

Texas Lottery Commission
Prize Payout Tracking Report
Unaudited

Through Week Ending 02/14/2009

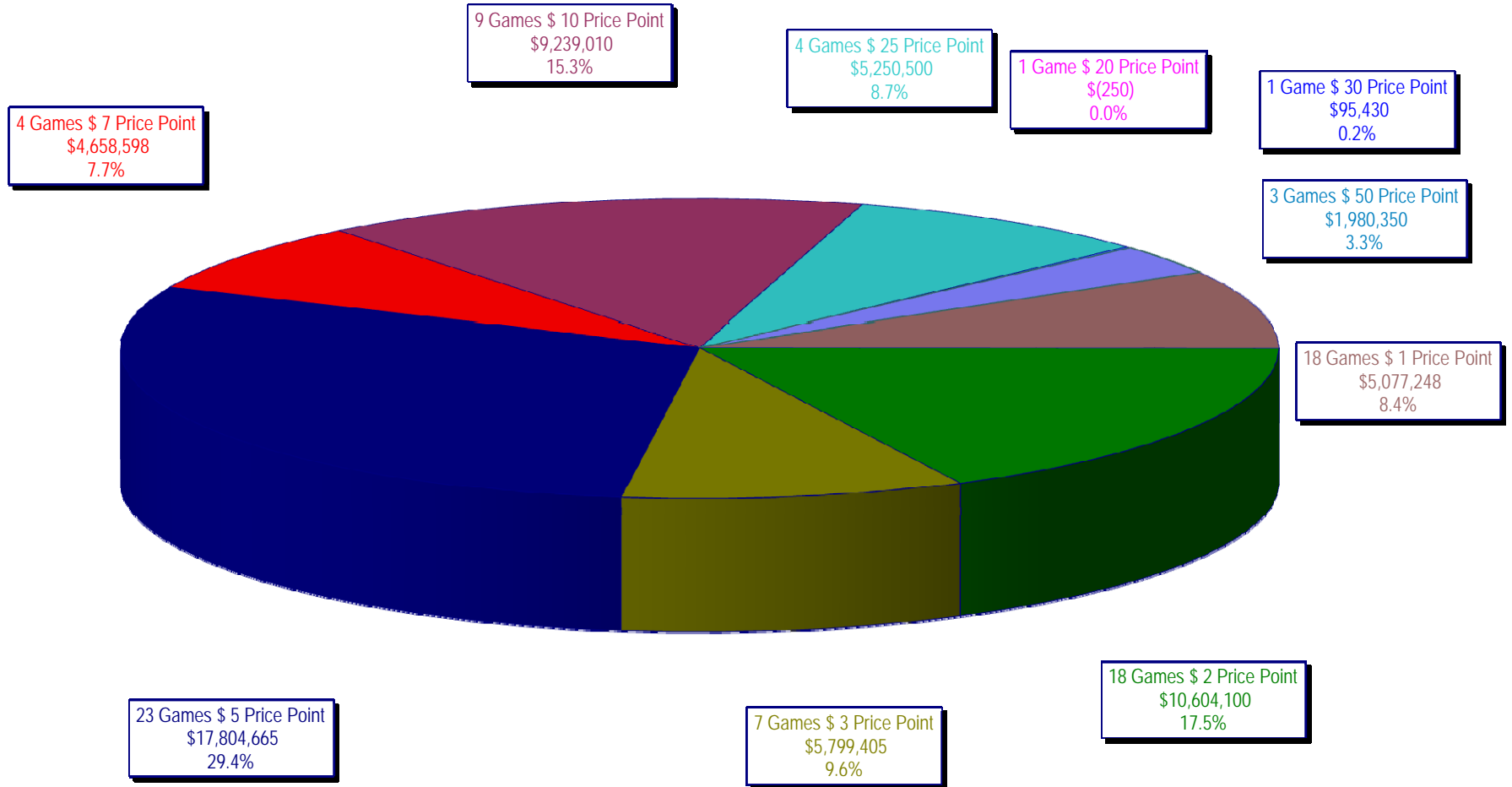
On-Line Sales

		FY Sales Through Week Ending 2/14/2009		FY Prize Expense Through Week Ending 2/14/2009	Actual* Prize Payout	Base Payout (Prize Pool)
Lotto	\$	85,093,919	\$	42,647,559	50.12%	50.00%
Pick 3		130,084,784		66,183,370	50.88%	50.00%
Pick 3 Sum It Up		2,751,198		1,226,696	44.59%	50.00%
Cash 5		32,724,115		16,463,770	50.31%	50.00%
Texas Two-Step		21,143,924		11,703,274	55.35%	50.00%
Mega Millions		78,025,420		38,373,123	49.18%	50.00%**
Megaplier		18,554,291		7,990,227	43.06%	N/A
Daily 4		19,922,021		9,202,400	46.19%	50.00%
Daily 4-Sum It Up		2,509,903		1,100,943	43.86%	50.00%
Totals	\$	390,809,573	\$	194,891,362	49.87%	

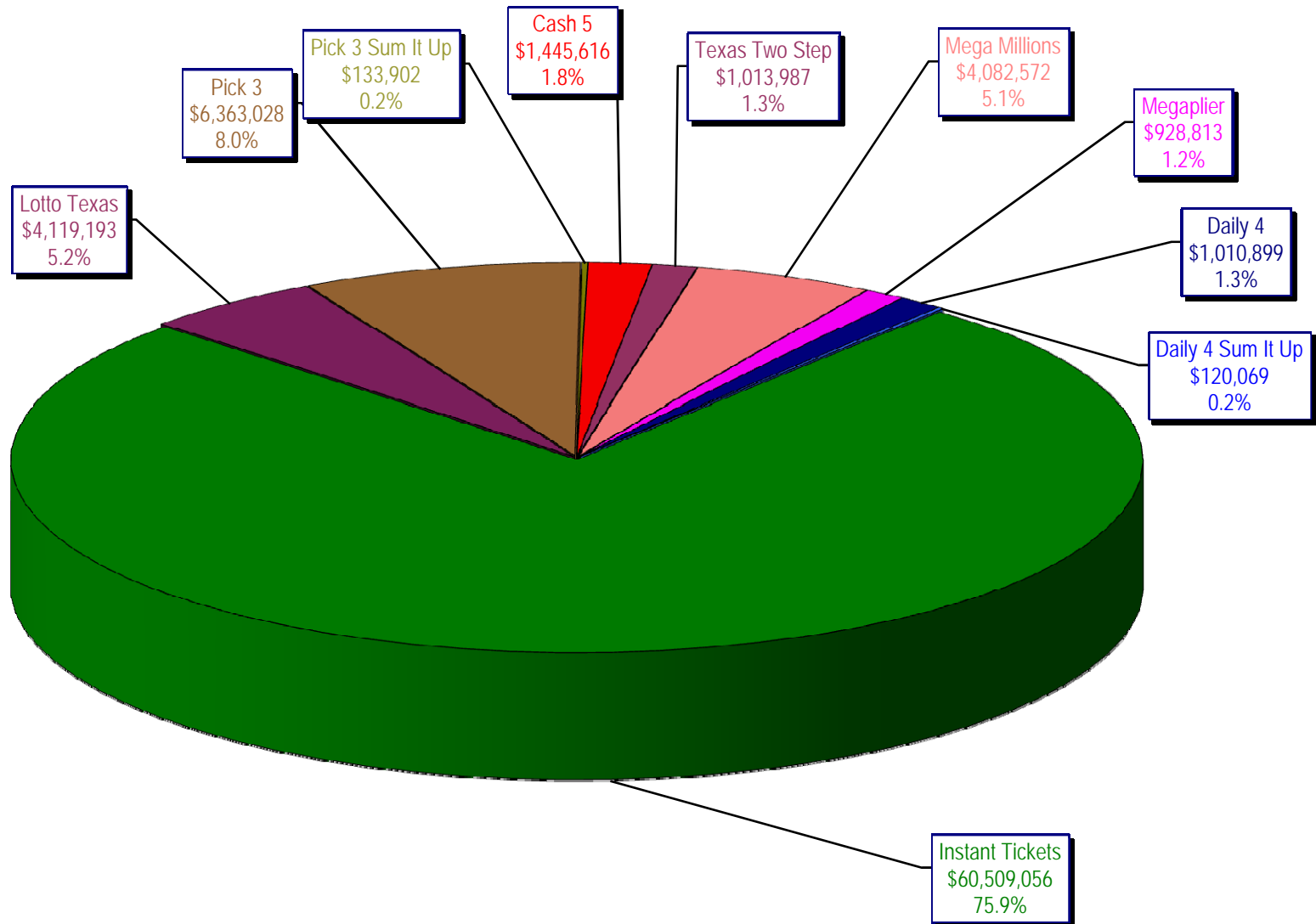
* Before Unclaimed Prizes

** Estimated; depends on # of guaranteed prizes won in Texas

Texas Lottery Commission
Instant Ticket Sales
 For the Week Ending 02/14/2009
 (Unaudited)



Texas Lottery Commission
All Game Sales
For the Week Ending 02/14/2009
(Unaudited)



Texas Lottery Commission - Weekly Sales Summary for FY 2009 (Unaudited)

Week Ended	Instant Games	New Games & Dates	Lotto Texas	Jackpot		Pick 3	Pick 3 Sum It Up	Cash 5	Texas Two Step	Jackpot		Mega Millions	Jackpot		Megaplier	Daily 4	Daily 4 Sum It Up	Total	Per Cap.
				W	S					M/T	TH/F		T	F					
9/6/2008	50,944,343.00	1108 (\$2,N), 1088 (\$3, N) - 9/01/08	3,378,718.00	5	6	5,436,414.00	122,123.00	1,396,622.00	890,346.00	350	450	2,445,490.00	12	16	649,090.00	786,482.50	109,834.00	66,159,462.50	2.77
9/13/2008	46,309,551.00	1109 (\$1,N), 1098 (\$5, N) - 9/08/08	3,020,089.00	7	8	4,705,585.50	105,899.00	1,279,412.00	856,199.00	600	200	2,327,214.00	24	12	617,672.00	696,633.00	96,156.50	60,014,411.00	2.51
9/20/2008	42,923,171.00	0	3,054,093.00	9	10	4,121,734.50	90,718.00	1,155,350.00	637,792.00	225	250	1,978,127.00	15	12	540,225.00	627,210.00	86,013.50	55,214,434.00	2.31
9/27/2008	47,042,801.00	1111 (\$2,N), 1099 (\$5, N) - 9/22/08	3,427,671.00	11	12	4,821,563.00	103,189.50	1,288,062.00	834,307.00	275	425	2,322,862.00	16	24	617,085.00	709,741.50	97,858.00	61,265,140.00	2.56
10/4/2008	50,747,162.00	1113 (\$1,N) 9/29/08	3,675,683.00	13	14	5,305,711.00	116,332.50	1,369,040.00	1,074,874.00	525	650	2,671,927.00	32	42	693,845.00	770,782.50	106,277.00	66,531,634.00	2.78
10/11/2008	49,763,789.00	0	3,732,365.00	15	16	5,287,094.00	114,665.50	1,370,334.00	1,305,250.00	800	975	2,306,070.00	12	16	622,120.00	778,204.00	106,395.00	65,386,286.50	2.74
10/18/2008	49,299,053.00	1117 (\$3,N), 1118 (\$20,N) - 10/13/08	3,780,438.00	17	18	5,149,258.00	109,530.00	1,355,601.00	741,849.00	200	200	2,500,644.00	23	32	652,198.00	776,366.00	102,056.00	64,466,993.00	2.70
10/25/2008	49,977,581.00	1119 (\$1,N), 1120 (\$5,N) - 10/20/08	3,210,762.00	4	5	5,099,671.00	107,104.50	1,339,079.00	789,649.00	225	275	2,456,965.00	42	12	641,206.00	778,434.00	102,972.50	64,503,424.00	2.70
11/1/2008	50,346,542.00	1121 (\$2,N), 1122 (\$10,N) - 10/27/08	3,325,641.00	6	7	5,234,124.00	109,983.00	1,339,046.00	946,035.00	375	475	2,347,596.00	16	23	626,235.00	805,572.00	104,612.50	65,185,386.50	2.73
11/8/2008	54,860,087.00	1123 (\$3,N), 1124 (\$7,N) - 11/03/08; 1103 (\$3,N) - 11/05/08; 1063 (\$3,N) - 11/07/08	3,290,417.00	4	5	5,686,701.00	118,495.00	1,397,985.00	1,158,101.00	625	750	2,729,302.50	31	42	692,662.00	871,230.00	112,175.50	70,917,156.00	2.97
11/15/2008	53,484,812.00	1125 (\$1, N), 1126 (\$5,N) - 11/10/08	3,336,934.00	6	7	5,459,984.00	112,884.00	1,366,024.00	766,955.00	200	225	3,102,251.00	51	62	749,736.00	830,957.00	104,094.00	69,314,631.00	2.90
11/22/2008	52,806,511.00	0	3,452,481.00	8	9	5,329,591.00	108,861.50	1,358,271.00	743,950.00	200	200	3,666,517.00	73	86	847,201.00	849,077.50	104,797.50	69,267,258.50	2.90
11/29/2008	52,199,741.00	1127 (\$2,N), 1128 (\$5,N) - 11/24/08	3,585,374.00	10	11	5,340,783.50	111,443.00	1,315,233.00	686,077.00	200	225	4,441,715.00	96	111	968,906.00	845,475.50	102,569.00	69,597,317.00	2.91
12/6/2008	56,731,851.00	0	3,794,991.00	12	13	5,752,593.00	121,663.50	1,416,446.00	780,328.00	250	200	6,238,355.00	128	146	1,270,214.00	881,841.50	107,357.00	77,095,640.00	3.23
12/13/2008	54,109,617.00	1129 (\$1, N) - 12/08/08	3,315,658.00	4	5	5,580,770.00	114,295.50	1,384,858.00	766,893.00	225	250	9,150,536.00	170	207	1,691,121.00	846,176.50	101,919.50	77,061,844.50	3.22
12/20/2008	55,777,328.00	1104 (\$2,N), 1105 (\$5,N), 1106 (\$10,N) - 12/15/08	3,432,340.00	6	7	5,741,120.00	116,075.50	1,401,805.00	741,945.00	200	200	2,736,234.00	12	16	687,875.00	871,579.50	104,543.00	71,610,845.00	3.00
12/27/2008	57,597,885.00	1077 (\$1,N), 1110 (\$1,N) - 12/22/08	3,582,169.00	8	4	5,628,081.50	115,323.00	1,340,590.00	708,906.00	225	250	2,842,167.00	22	29	706,042.00	828,346.00	100,146.00	73,449,655.50	3.07
1/3/2009	57,582,115.00	0	3,784,763.00	5	6	5,690,220.50	120,519.50	1,406,807.00	934,000.00	325	525	3,190,457.00	37	46	780,850.00	885,674.00	106,736.50	74,482,142.50	3.12
1/10/2009	54,250,945.00	1135 (\$2,N), 1136 (\$5,N) - 1/5/09	3,582,400.00	7	8	5,476,890.00	116,674.50	1,403,531.00	1,267,847.00	675	900	2,701,275.00	12	16	681,574.00	868,919.00	104,109.50	70,454,165.00	2.95
1/17/2009	51,625,339.00	1137 (\$1,N), 1138 (\$3,N) - 1/12/09	3,668,302.50	9	10	5,443,159.00	112,605.00	1,387,958.00	778,563.00	200	200	2,683,707.00	22	12	675,416.00	852,987.00	98,907.50	67,326,944.00	2.82
1/24/2009	52,789,573.00	1115 (\$2,N), 1116 (\$5,N) - 1/19/09	3,723,835.50	11	12	5,514,547.50	115,827.50	1,376,695.00	860,483.00	225	325	2,692,611.00	16	21	676,936.00	836,996.00	99,541.00	68,687,045.50	2.87
1/31/2009	55,453,471.00	1080 (\$1,N), 1024 (\$20,R) - 1/26/09; 1062 (\$5,N) - 1/28/09	3,837,299.00	13	14	5,700,714.50	121,794.50	1,403,756.00	1,070,879.00	450	600	3,002,883.00	30	40	731,253.00	925,937.50	113,755.50	72,361,743.00	3.03
2/7/2009	62,247,711.00	1035 (\$2,N), 1144 (\$5,N), 1058 (\$10, N) - 2/2/09	4,092,117.00	15	16	6,336,717.00	134,543.00	1,481,812.00	842,746.00	200	225	3,509,032.00	50	60	829,550.00	1,007,529.00	120,267.50	80,602,024.50	3.37
2/14/2009	60,509,056.00	1146 (\$7,N), 1089 (\$1,N) - 2/9/09	4,119,193.00	17	18	6,363,028.00	133,901.50	1,445,616.00	1,013,987.00	325	450	4,082,572.00	73	85	928,813.00	1,010,898.50	120,068.50	79,727,133.50	3.34
weekly change	-2.79%		0.66%			0.42%	-0.48%	-2.44%	20.32%			16.34%			11.97%	0.33%	-0.17%	-1.09%	
	SALES		SALES			SALES	SALES	SALES	SALES			SALES			SALES	SALES	SALES	SALES	% of Sales
Startup to date	34,743,911,798.00		10,364,190,966.00			3,428,803,736.00	9,237,027.50	2,151,880,125.00	447,409,642.00			1,004,164,014.50			236,762,325.00	62,138,992.50	10,848,706.00	52,667,481,304.50	100.0%
Calendar Year to date	362,008,123.00		24,821,674.00			37,644,237.00	175,670.50	9,141,671.00	6,250,505.00			20,207,111.00			4,894,510.00	5,931,334.00	707,898.50	471,782,734.00	100.0%
Fiscal Year to date 2009	1,263,325,796.00		85,093,919.00			130,084,783.50	2,751,197.50	32,724,115.00	21,143,924.00			78,025,419.50			18,554,291.00	19,922,021.00	2,509,902.50	1,654,135,369.00	100.0%