



WEEKLY SALES SUMMARY

Unaudited

Week Ending: 2/14/2015

Texas Lottery Commission
Fiscal Year to Date Sales Comparison
Unaudited

Through the Week Ending 2/14/2015 (24 Weeks)

Sales by Game	FY 2013 *	FY 2014 **	FY 2015	\$ Change		% Change	
				FY 2015 to FY 2013	FY 2015 to FY 2014	FY 2015 to FY 2013	FY 2015 to FY 2014
Instants	\$ 1,440,503,245	\$ 1,488,345,916	\$ 1,553,345,446	\$ 112,842,201	\$ 64,999,530	7.8%	4.4%
Lotto Texas	72,418,787	60,903,276	56,127,437	-16,291,350	-4,775,839	-22.5%	-7.8%
Lotto Extra	-	7,952,572	8,551,925	8,551,925	599,353	-	7.5%
Pick 3	123,622,961	115,866,543	114,564,803	-9,058,159	-1,301,741	-7.3%	-1.1%
Pick 3 Sum It Up	2,319,138	2,310,633	2,220,389	-98,749	-90,244	-4.3%	-3.9%
Cash Five	26,285,840	24,392,057	22,929,513	-3,356,327	-1,462,544	-12.8%	-6.0%
Texas Two Step	27,422,895	25,934,395	24,914,407	-2,508,488	-1,019,988	-9.1%	-3.9%
Mega Millions	48,654,894	104,089,215	76,194,109	27,539,215	-27,895,106	56.6%	-26.8%
Megaplier	11,352,946	21,648,418	17,340,627	5,987,681	-4,307,791	52.7%	-19.9%
Daily 4	32,928,244	38,333,680	39,052,727	6,124,484	719,047	18.6%	1.9%
Daily 4 Sum It Up	2,166,650	2,373,143	2,313,698	147,048	-59,445	6.8%	-2.5%
Powerball	128,160,973	103,870,479	120,154,517	-8,006,456	16,284,038	-6.2%	15.7%
Power Play	13,100,982	12,257,865	14,254,616	1,153,634	1,996,751	8.8%	16.3%
All or Nothing	41,368,054	22,289,309	17,783,560	-23,584,494	-4,505,749	-57.0%	-20.2%
Monopoly	-	- ¹	2,656,430	2,656,430	2,656,430	-	-
Total	\$ 1,970,305,608	\$ 2,030,567,501	\$ 2,072,404,203	\$ 102,098,596	\$ 41,836,703	5.2%	2.1%

* 2 extra days

** 1 extra day

¹ Monopoly sales were suspended after draw on 12/12/14

Texas Lottery Commission
Fiscal Year to Date Cumulative Average Sales Comparison
Unaudited

Through the Week Ending 2/14/2015 (24 Weeks)

Sales by Game	FY 2013	FY 2014	FY 2015
Instant	\$ 8,523,688	\$ 8,859,202	\$ 9,301,470
Lotto Texas	428,514	362,520	336,092
Lotto Extra	-	47,337	51,209
Pick 3	731,497	689,682	686,017
Pick 3 Sum It Up	13,723	13,754	13,296
Cash Five	155,538	145,191	137,302
Texas Two Step	162,266	154,371	149,188
Mega Millions	287,899	619,579	456,252
Megaplier	67,177	128,860	103,836
Daily 4	194,842	228,177	233,849
Daily 4 Sum It Up	12,820	14,126	13,854
Powerball	758,349	618,277	719,488
Power Play	77,521	72,963	85,357
All or Nothing	* 256,944	132,674	106,488
Monopoly	-	- **	48,299
Total	\$ 11,670,776	\$ 12,086,711	\$ 12,441,998

	thru 2/16/2013	thru 2/15/2014	thru 2/14/2015
	169 days	168 days	167 days
*	161 days		** 55 days

Texas Lottery Commission
Fiscal Year Over Year Change in Sales
Unaudited
FY 2015 Compared to FY 2014

			INSTANT TICKETS				DRAW GAMES				TOTAL SALES			
FY 2015			FY 2015	FY 2014	Difference	% change - Cumulative Sales	FY 2015	FY 2014	Difference	% change - Cumulative Sales	FY 2015	FY 2014	Difference	% change - Cumulative Sales
Week	Week Ending													
1	9/6/2014 *		\$54,911,801	\$58,587,757	(\$3,675,956)	-6.3%	\$17,482,488	\$22,369,499	(\$4,887,011)	-21.8%	\$72,394,289	\$80,957,256	(\$8,562,967)	-10.6%
2	9/13/2014		\$61,436,533	\$57,135,931	\$4,300,602	7.5%	\$19,097,081	\$25,412,980	(\$6,315,899)	-24.9%	\$80,533,614	\$82,548,911	(\$2,015,297)	-2.4%
3	9/20/2014		\$60,959,234	\$59,018,194	\$1,941,040	3.3%	\$20,567,894	\$29,161,241	(\$8,593,347)	-29.5%	\$81,527,128	\$88,179,435	(\$6,652,307)	-7.5%
4	9/27/2014		\$59,710,056	\$57,927,984	\$1,782,072	3.1%	\$19,920,828	\$20,012,313	(\$91,485)	-0.5%	\$79,630,884	\$77,940,297	\$1,690,588	2.2%
5	10/4/2014		\$62,119,854	\$62,146,816	(\$26,962)	0.0%	\$18,531,421	\$20,043,557	(\$1,512,136)	-7.5%	\$80,651,275	\$82,190,373	(\$1,539,098)	-1.9%
6	10/11/2014		\$61,253,665	\$60,867,582	\$386,083	0.6%	\$18,985,332	\$19,480,962	(\$495,631)	-2.5%	\$80,238,997	\$80,348,544	(\$109,548)	-0.1%
7	10/18/2014		\$60,230,048	\$60,612,193	(\$382,145)	-0.6%	\$19,538,402	\$20,079,610	(\$541,209)	-2.7%	\$79,768,450	\$80,691,803	(\$923,354)	-1.1%
8	10/25/2014		\$62,384,112	\$59,548,277	\$2,835,835	4.8%	\$21,475,643	\$19,319,928	\$2,155,715	11.2%	\$83,859,755	\$78,868,205	\$4,991,550	6.3%
9	11/1/2014		\$63,404,713	\$61,710,236	\$1,694,477	2.7%	\$23,568,817	\$18,308,976	\$5,259,842	28.7%	\$86,973,530	\$80,019,212	\$6,954,319	8.7%
10	11/8/2014		\$65,486,719	\$61,668,594	\$3,818,125	6.2%	\$23,749,032	\$19,555,070	\$4,193,963	21.4%	\$89,235,751	\$81,223,664	\$8,012,088	9.9%
11	11/15/2014		\$61,745,521	\$60,057,025	\$1,688,496	2.8%	\$17,449,604	\$20,930,071	(\$3,480,468)	-16.6%	\$79,195,125	\$80,987,096	(\$1,791,972)	-2.2%
12	11/22/2014		\$66,353,583	\$63,118,266	\$3,235,317	5.1%	\$17,108,084	\$19,086,770	(\$1,978,687)	-10.4%	\$83,461,667	\$82,205,036	\$1,256,631	1.5%
13	11/29/2014		\$60,471,184	\$57,145,294	\$3,325,890	5.8%	\$17,303,129	\$20,434,618	(\$3,131,489)	-15.3%	\$77,774,313	\$77,579,912	\$194,401	0.3%
14	12/6/2014		\$66,648,696	\$59,883,783	\$6,764,913	11.3%	\$18,862,425	\$22,791,842	(\$3,929,417)	-17.2%	\$85,511,121	\$82,675,625	\$2,835,496	3.4%
15	12/13/2014		\$65,708,630	\$60,310,298	\$5,398,332	9.0%	\$18,649,598	\$35,859,153	(\$17,209,555)	-48.0%	\$84,358,228	\$96,169,451	(\$11,811,223)	-12.3%
16	12/20/2014		\$68,551,298	\$65,088,999	\$3,462,299	5.3%	\$19,051,100	\$46,832,745	(\$27,781,646)	-59.3%	\$87,602,398	\$111,921,744	(\$24,319,347)	-21.7%
17	12/27/2014		\$73,858,618	\$67,721,619	\$6,136,999	9.1%	\$20,006,357	\$18,218,091	\$1,788,266	9.8%	\$93,864,975	\$85,939,710	\$7,925,265	9.2%
18	1/3/2015		\$67,733,268	\$67,162,991	\$570,277	0.8%	\$21,355,167	\$19,140,745	\$2,214,422	11.6%	\$89,088,435	\$86,303,736	\$2,784,699	3.2%
19	1/10/2015		\$64,745,641	\$65,049,914	(\$304,273)	-0.5%	\$22,265,347	\$17,954,333	\$4,311,015	24.0%	\$87,010,988	\$83,004,247	\$4,006,742	4.8%
20	1/17/2015		\$64,015,166	\$62,731,830	\$1,283,336	2.0%	\$23,694,617	\$18,900,213	\$4,794,405	25.4%	\$87,709,783	\$81,632,043	\$6,077,741	7.4%
21	1/24/2015		\$62,569,156	\$59,085,886	\$3,483,270	5.9%	\$19,765,442	\$19,558,830	\$206,612	1.1%	\$82,334,598	\$78,644,716	\$3,689,882	4.7%
22	1/31/2015		\$68,001,588	\$64,099,096	\$3,902,492	6.1%	\$22,877,000	\$20,764,006	\$2,112,995	10.2%	\$90,878,588	\$84,863,102	\$6,015,487	7.1%
23	2/7/2015		\$75,677,650	\$67,717,353	\$7,960,297	11.8%	\$31,662,209	\$22,433,672	\$9,228,537	41.1%	\$107,339,859	\$90,151,025	\$17,188,834	19.1%
24	2/14/2015		\$75,368,712	\$69,949,998	\$5,418,714	7.7%	\$46,091,747	\$25,572,367	\$20,519,380	80.2%	\$121,460,459	\$95,522,365	\$25,938,094	27.2%
25	2/21/2015			\$72,422,148				\$31,832,665				\$104,254,813		
26	2/28/2015			\$72,883,830				\$21,827,140				\$94,710,970		
27	3/7/2015			\$73,726,744				\$22,528,352				\$96,255,096		
28	3/14/2015			\$71,026,808				\$25,171,358				\$96,198,166		
29	3/21/2015			\$69,174,125				\$25,837,564				\$95,011,689		
30	3/28/2015			\$66,886,917				\$18,604,870				\$85,491,787		
31	4/4/2015			\$71,218,020				\$19,883,667				\$91,101,687		
32	4/11/2015			\$65,970,648				\$18,875,485				\$84,846,133		
33	4/18/2015			\$64,922,280				\$19,723,048				\$84,645,328		
34	4/25/2015			\$60,578,829				\$18,978,148				\$79,556,977		
35	5/2/2015			\$64,244,545				\$19,029,632				\$83,274,177		
36	5/9/2015			\$65,679,029				\$19,350,478				\$85,029,507		
37	5/16/2015			\$63,627,971				\$19,865,609				\$83,493,580		
38	5/23/2015			\$61,902,451				\$19,892,846				\$81,795,297		
39	5/30/2015			\$61,264,953				\$20,014,636				\$81,279,589		
40	6/6/2015			\$64,019,948				\$21,782,886				\$85,802,834		
41	6/13/2015			\$59,742,598				\$19,736,748				\$79,479,346		
42	6/20/2015			\$59,010,863				\$17,095,336				\$76,106,199		

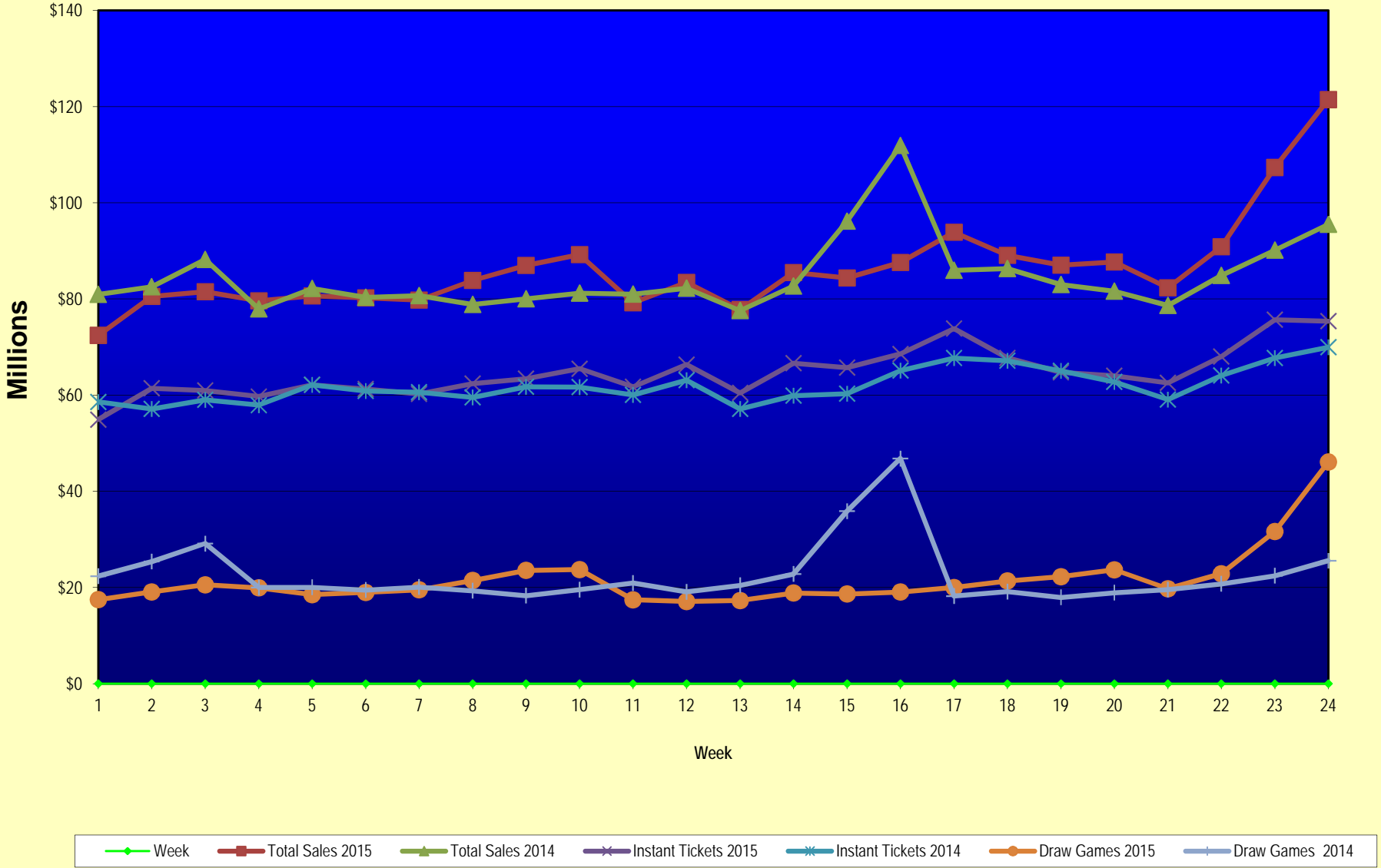
Texas Lottery Commission
Fiscal Year Over Year Change in Sales
Unaudited
FY 2015 Compared to FY 2014

			INSTANT TICKETS				DRAW GAMES				TOTAL SALES			
FY 2015			FY 2015	FY 2014	Difference	% change - Cumulative Sales	FY 2015	FY 2014	Difference	% change - Cumulative Sales	FY 2015	FY 2014	Difference	% change - Cumulative Sales
Week	Week	Ending												
43	6/27/2015			\$58,102,191				\$17,635,736				\$75,737,927		
44	7/4/2015			\$61,566,071				\$18,521,529				\$80,087,600		
45	7/11/2015			\$58,729,674				\$17,913,387				\$76,643,061		
46	7/18/2015			\$58,202,035				\$17,602,032				\$75,804,067		
47	7/25/2015			\$57,220,932				\$17,736,889				\$74,957,821		
48	8/1/2015			\$64,207,294				\$18,208,743				\$82,416,037		
49	8/8/2015			\$60,066,007				\$19,022,945				\$79,088,952		
50	8/15/2015			\$58,374,809				\$18,567,246				\$76,942,055		
51	8/22/2015			\$57,277,475				\$18,916,460				\$76,193,935		
52	8/29/2015			\$61,884,256				\$17,283,925				\$79,168,181		
	8/31/2015 **			\$7,949,803				\$706,956				\$8,656,759		
Total thru Current Week			\$1,553,345,446	\$1,488,345,916	\$64,999,530	4.4%	\$519,058,757	\$542,221,585	(\$23,162,828)	-4.3%	\$2,072,404,203	\$2,030,567,501	\$41,836,703	2.1%
Fiscal Year Total			\$1,553,345,446	\$3,280,229,170			\$519,058,757	\$1,104,367,893			\$2,072,404,203	\$4,384,597,063		

* FY 15 includes 6 days

** FY 15 includes 2 days; FY 14 includes 1 day

Texas Lottery Commission Fiscal Year Over Year Change in Sales



Note: Week 1 is not a full week of sales as this report is prepared on a Fiscal Year basis.

Texas Lottery Commission
Instant Tickets by Price Point
Sales, Prize Expense, Sales Contribution and Payout Percentage With Year Over Year Changes
Unaudited

Fiscal Year	Price Point	# of Active Games	FY Sales	% of Instant Ticket Sales	Year over Year Change in Sales	FY Prize Expense	Year over Year Change in Prize Expense	FY Sales Contribution	Year over Year Change in Contribution	Average Prize Payout %	Year over Year Change in Payout %
2014	\$1.00	25	86,746,629	5.8%		51,998,567		34,748,062		59.9%	-1.3%
Through	\$2.00	30	180,085,632	12.1%		116,919,544		63,166,088		64.9%	-0.1%
2/15/2014	\$3.00	14	151,392,045	10.2%		99,110,472		52,281,573		65.5%	-0.1%
	\$5.00	46	499,068,720	33.5%		338,943,268		160,125,452		67.9%	-0.2%
	\$10.00	13	271,212,650	18.2%		190,882,975		80,329,675		70.4%	-1.0%
	\$20.00	9	245,703,540	16.5%		183,968,296		61,735,244		74.9%	0.0%
	\$50.00	2	54,136,700	3.6%		42,028,989		12,107,711		77.6%	0.0%
Total		139	\$1,488,345,916			\$1,023,852,111		\$464,493,805		68.8%	-0.2%
2015	\$1.00	19	80,525,862	5.2%		49,108,067		31,417,795		61.0%	1.8%
thru	\$2.00	28	162,842,592	10.5%		107,305,409		55,537,183		65.9%	1.6%
2/14/2015	\$3.00	13	156,842,787	10.1%		103,395,917		53,446,870		65.9%	0.5%
	\$5.00	40	492,177,735	31.7%		334,364,172		157,813,563		67.9%	0.0%
	\$10.00	15	307,198,090	19.8%		216,384,947		90,813,143		70.4%	0.2%
	\$20.00	9	282,880,680	18.2%		212,061,882		70,818,798		75.0%	0.1%
	\$50.00	3	70,877,700	4.6%		55,087,629		15,790,071		77.7%	0.1%
Total		127	\$1,553,345,446			\$1,077,708,021		\$475,637,425		69.4%	0.7%
Variance	\$1.00	-6	-6,220,767		-7.2%	-2,890,500	-5.6%	-3,330,267	-9.6%	1.04%	
2015 to	\$2.00	-2	-17,243,040		-9.6%	-9,614,135	-8.2%	-7,628,905	-12.1%	0.97%	
2014	\$3.00	-1	5,450,742		3.6%	4,285,444	4.3%	1,165,298	2.2%	0.46%	
	\$5.00	-6	-6,890,985		-1.4%	-4,579,096	-1.4%	-2,311,889	-1.4%	0.02%	
	\$10.00	2	35,985,440		13.3%	25,501,971	13.4%	10,483,469	13.1%	0.06%	
	\$20.00	0	37,177,140		15.1%	28,093,586	15.3%	9,083,554	14.7%	0.09%	
	\$50.00	1	16,741,000		30.9%	13,058,640	31.1%	3,682,360	30.4%	0.09%	
Total		-12	\$64,999,530		4.4%	\$53,855,910	5.3%	\$11,143,620	2.4%	0.59%	

Notes - Instant Ticket Variances

Texas Lottery Commission
Instant Tickets by Price Point
Sales, Prize Expense, Sales Contribution and Payout Percentage With Year Over Year Changes
 Unaudited

		FY 2015		FY 2014		Difference
Sales	\$1 - \$5	\$892,388,976		\$917,293,026		-\$24,904,050
Prize Exp.	\$1 - \$5	\$594,173,564		\$606,971,851		-\$12,798,286
Sales Cont.	\$1 - \$5	\$298,215,412		\$310,321,175		-\$12,105,764
Prize Exp. %	\$1 - \$5	66.6%		66.2%		0.4%
		FY 2015		FY 2014		Difference
Sales	\$10 - \$50	\$660,956,470		\$571,052,890		\$89,903,580
Prize Exp.	\$10 - \$50	\$483,534,457		\$416,880,260		\$66,654,197
Sales Cont.	\$10 - \$50	\$177,422,013		\$154,172,630		\$23,249,383
Prize Exp. %	\$10 - \$50	73.2%		73.0%		0.2%
		FY 2015		FY 2014		Difference
Sales	Instant	\$1,553,345,446		\$1,488,345,916		\$64,999,530
Prize Exp.	Instant	\$1,077,708,021		\$1,023,852,111		\$53,855,910
Sales Cont.	Instant	\$475,637,425		\$464,493,805		\$11,143,620
Prize Exp. %	Instant	69.4%		68.8%		0.6%

		FY 2015		FY 2014		Difference
Sales	\$1 - \$10	\$1,199,587,066		\$1,188,505,676		\$11,081,390
Prize Exp.	\$1 - \$10	\$810,558,511		\$797,854,826		\$12,703,685
Sales Cont.	\$1 - \$10	\$389,028,555		\$390,650,850		-\$1,622,295
Prize Exp. %	\$1 - \$10	67.6%		67.1%		0.4%
		FY 2015		FY 2014		Difference
Sales	\$20 - \$50	\$353,758,380		\$299,840,240		\$53,918,140
Prize Exp.	\$20 - \$50	\$267,149,510		\$225,997,285		\$41,152,225
Sales Cont.	\$20 - \$50	\$86,608,870		\$73,842,955		\$12,765,915
Prize Exp. %	\$20 - \$50	75.5%		75.4%		0.1%
		FY 2015		FY 2014		Difference
Sales	Instant	\$1,553,345,446		\$1,488,345,916		\$64,999,530
Prize Exp.	Instant	\$1,077,708,021		\$1,023,852,111		\$53,855,910
Sales Cont.	Instant	\$475,637,425		\$464,493,805		\$11,143,620
Prize Exp. %	Instant	69.4%		68.8%		0.6%

Texas Lottery Commission
Weekly Sales Summary
& Comparison to Previous Week
 Unaudited

	Week Ending 2/14/2015	% of Sales	Week Ending 2/07/2015	% of Sales	\$ change	% change
	<u>THIS WEEK</u>		<u>LAST WEEK</u>			
Total Sales	<u>\$121,460,459</u>		<u>\$107,339,859</u>		<u>\$14,120,600</u>	13.16%
Instant Tickets	<u>\$75,368,712</u>	62.1%	<u>\$75,677,650</u>	70.5%	<u>-\$308,938</u>	-0.41%
Lotto	\$2,732,167	2.2%	\$2,493,246	2.3%	\$238,921	9.58%
Lotto Extra	\$422,012	0.3%	\$392,502	0.4%	\$29,510	7.52%
Pick 3	\$5,014,682	4.1%	\$5,114,958	4.8%	-\$100,276	-1.96%
Pick 3 Sum It Up	\$102,578	0.1%	\$105,675	0.1%	-\$3,097	-2.93%
Cash Five	\$1,010,709	0.8%	\$1,009,912	0.9%	\$797	0.08%
Texas Two Step	\$874,297	0.7%	\$1,511,180	1.4%	-\$636,883	-42.14%
Mega Millions	\$2,863,303	2.4%	\$2,378,853	2.2%	\$484,450	20.36%
Megaplier	\$697,827	0.6%	\$604,450	0.6%	\$93,377	15.45%
Daily 4	\$1,735,161	1.4%	\$1,791,305	1.7%	-\$56,144	-3.13%
Daily 4 Sum It Up	\$98,225	0.1%	\$103,366	0.1%	-\$5,141	-4.97%
Powerball	\$27,170,708	22.4%	\$13,888,215	12.9%	\$13,282,493	95.64%
Power Play	\$2,547,539	2.1%	\$1,485,755	1.4%	\$1,061,784	71.46%
All or Nothing	\$822,540	0.7%	\$782,868	0.7%	\$39,672	5.07%
Monopoly	\$0	0.0%	-\$75	0.0%	\$75	-100.00%
Total Draw Game Sales	<u>\$46,091,747</u>		<u>\$31,662,209</u>		<u>\$14,429,538</u>	45.57%

* Totals may not sum due to rounding.

Texas Lottery Commission
Weekly Sales Summary
Unaudited

INSTANT TICKETS
TOP TEN SELLING GAMES

For the Week Ending: 2/14/15

Rank	Price Point	Game	Sales (Millions)
1	\$ 20	100X THE CASH	\$ 5.902
2	\$ 10	BIG MONEY	\$ 4.789
3	\$ 10	50X THE CASH	\$ 4.440
4	\$ 5	HOT NUMBERS	\$ 3.996
5	\$ 5	20X THE CASH	\$ 3.464
6	\$ 3	LOTERIA	\$ 3.042
7	\$ 50	MILLIONAIRES CLUB	\$ 2.855
8	\$ 20	\$500 MILLION EXTREME CASH BLAST	\$ 2.464
9	\$ 5	\$100,000 CASHWORD-O-RAMA	\$ 2.438
10	\$ 3	BONUS CASHWORD	\$ 2.327

Texas Lottery Commission
Prize Payout Tracking Report
Unaudited

Through the Week Ending: 2/14/15

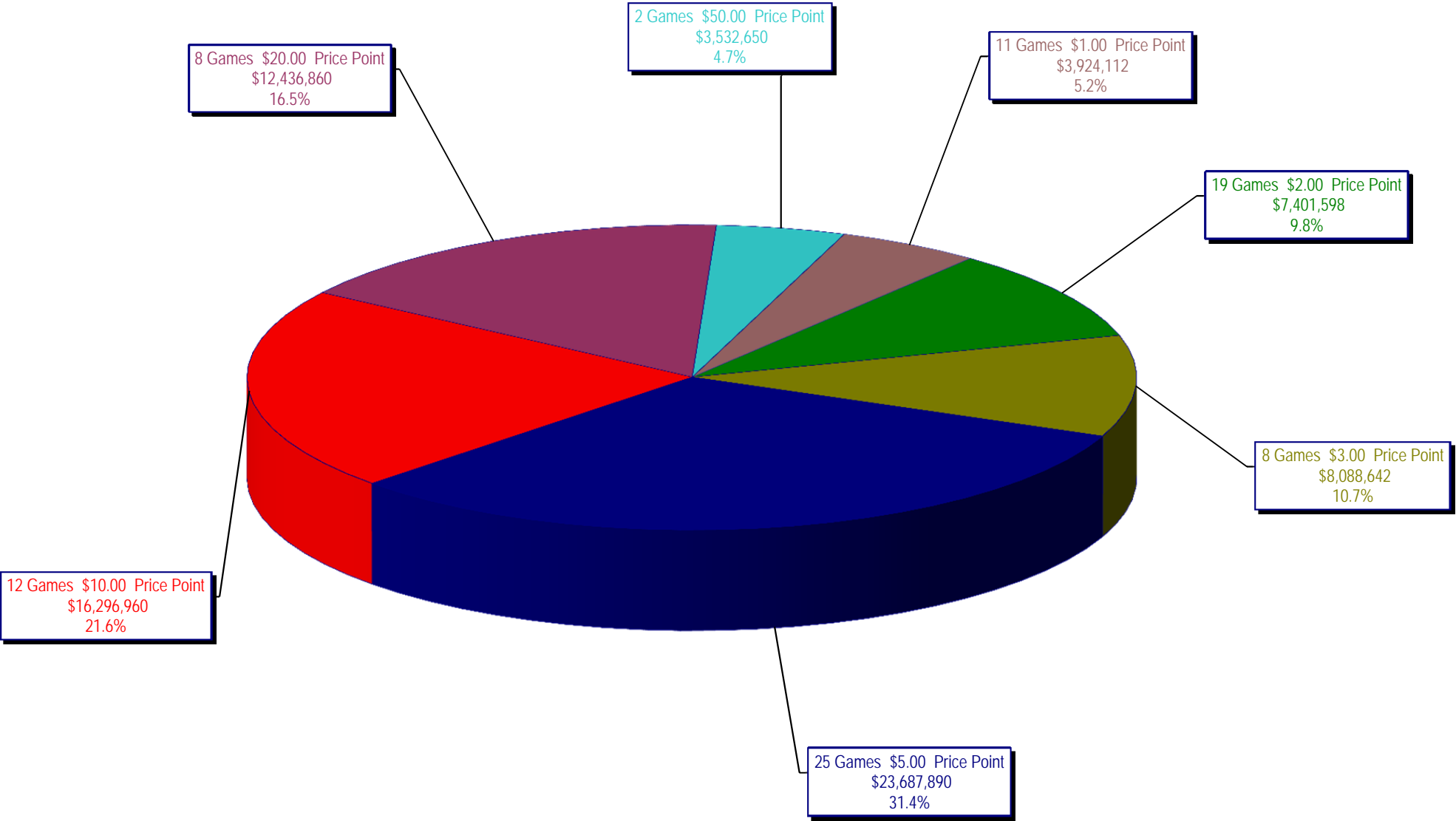
Draw Game Sales

		FY Sales Through Week Ending 2/14/2015		FY Prize Expense Through Week Ending 2/14/2015	Actual* Prize Payout	Base Payout (Prize Pool)
Lotto	\$	56,127,437	\$	28,168,027	50.19%	54.00%
Lotto Extra		8,551,925		4,704,136	55.01%	53.70%
Pick 3		114,564,803		54,139,140	47.26%	50.00%
Pick 3 Sum It Up		2,220,389		1,003,596	45.20%	50.00%
Cash Five		22,929,513		11,464,767	50.00%	50.00%
Texas Two Step		24,914,407		12,757,838	51.21%	50.00%
Mega Millions		76,194,109		38,876,111	51.02%	50.00%**
Megaplier		17,340,627		8,672,977	50.02%	N/A
Daily 4		39,052,727		18,600,825	47.63%	50.00%
Daily 4 Sum It Up		2,313,698		919,778	39.75%	50.00%
Powerball		120,154,517		60,104,240	50.02%	50.00%**
Power Play		14,254,616		7,129,860	50.02%	N/A
All or Nothing		17,783,560		10,798,758	60.72%	55.98%
Monopoly		2,656,430		3,617,028	136.16%	50.00%
Totals	\$	519,058,757	\$	260,957,079	50.28%	

* Before Unclaimed Prizes

** Estimated; depends on # of guaranteed prizes won in Texas

Texas Lottery Commission
Instant Ticket Sales
For the Week Ending 2/14/15
(Unaudited)



Texas Lottery Commission
All Game Sales
For the Week Ending 2/14/15
(Unaudited)

