



*WEEKLY SALES SUMMARY*

Unaudited

**Week Ending: 2/17/2018**

Texas Lottery Commission  
Fiscal Year to Date Sales Comparison  
Unaudited

Through the Week Ending 2/17/2018 (25 Weeks)

Sales by Game	FY 2016 *	FY 2017 **	FY 2018	\$ Change		% Change	
				FY 2018 to FY 2016	FY 2018 to FY 2017	FY 2018 to FY 2016	FY 2018 to FY 2017
Scratch Tickets	\$ 1,721,729,608	\$ 1,767,105,748	\$ 1,965,507,621	\$ 243,778,013	\$ 198,401,873	14.2%	11.2%
Lotto Texas	62,163,257	52,927,609	53,127,553	-9,035,704	199,944	-14.5%	0.4%
Lotto Extra	10,593,425	10,200,657	11,520,724	927,299	1,320,067	8.8%	12.9%
Pick 3	120,735,310	116,734,298	117,026,238	-3,709,072	291,940	-3.1%	0.3%
Pick 3 Sum It Up	2,450,156	2,219,658	2,330,751	-119,406	111,093	-4.9%	5.0%
Cash Five	22,329,541	20,648,746	19,856,904	-2,472,637	-791,842	-11.1%	-3.8%
Texas Two Step	24,168,887	26,972,301	24,277,228	108,341	-2,695,073	0.4%	-10.0%
Mega Millions	62,165,616	52,044,971	89,516,893	27,351,277	37,471,922	44.0%	72.0%
Megaplier	15,543,200	14,095,491	15,275,695	-267,505	1,180,204	-1.7%	8.4%
MM Just the Jackpot	-	-	817,176	817,176	817,176	-	-
Daily 4	42,260,159	44,129,492	49,912,891	7,652,733	5,783,400	18.1%	13.1%
Daily 4 Sum It Up	2,219,317	2,388,155	2,720,392	501,075	332,237	22.6%	13.9%
Powerball	311,994,145	110,297,015	131,618,839	-180,375,306	21,321,824	-57.8%	19.3%
Power Play	33,266,559	15,437,266	19,286,060	-13,980,499	3,848,794	-42.0%	24.9%
All or Nothing	15,006,522	13,562,794	13,539,179	-1,467,343	-23,615	-9.8%	-0.2%
Texas Triple Chance	13,041,033	7,254,536	5,905,270	-7,135,763	-1,349,266	-54.7%	-18.6%
<b>Total</b>	<b>\$ 2,459,666,734</b>	<b>\$ 2,256,018,736</b>	<b>\$ 2,522,239,412</b>	<b>\$ 62,572,678</b>	<b>\$ 266,220,676</b>	<b>2.5%</b>	<b>11.8%</b>

\* 3 extra days

\*\* 1 extra day

Texas Lottery Commission  
Fiscal Year to Date Cumulative Average Sales Comparison  
Unaudited

Through the Week Ending 2/17/2018 (25 Weeks)

Sales by Game	FY 2016	FY 2017	FY 2018
Scratch Tickets	\$ 9,952,194	\$ 10,333,952	\$ 11,561,810
Lotto Texas	359,325	309,518	312,515
Lotto Extra	61,234	59,653	67,769
Pick 3	697,892	682,657	688,390
Pick 3 Sum It Up	14,163	12,980	13,710
Cash Five	129,072	120,753	116,805
Texas Two Step	139,705	157,733	142,807
Mega Millions	359,339	304,357	526,570
Megaplier	89,845	82,430	89,857
MM Just the Jackpot	-	- **	7,232
Daily 4	244,278	258,067	293,605
Daily 4 Sum It Up	12,828	13,966	16,002
Powerball	1,803,434	645,012	774,228
Power Play	192,292	90,276	113,447
All or Nothing	86,743	79,315	79,642
Texas Triple Chance	* 88,715	42,424	34,737
<b>Total</b>	<b>\$ 14,231,060</b>	<b>\$ 13,193,092</b>	<b>\$ 14,839,127</b>

thru 2/20/2016

thru 2/18/2017

thru 2/17/2018

173 days

171 days

170 days

\* 147 days

\*\* 113 days

Texas Lottery Commission  
Fiscal Year Over Year Change in Sales  
Unaudited  
FY 2018 Compared to FY 2017

			SCRATCH TICKETS				DRAW GAMES				TOTAL SALES			
FY 2018			FY 2018	FY 2017	Difference	% change - Cumulative Sales	FY 2018	FY 2017	Difference	% change - Cumulative Sales	FY 2018	FY 2017	Difference	% change - Cumulative Sales
Week	Week	Ending												
1	9/2/2017 *		\$23,058,926	\$32,980,266	(\$9,921,340)	-30.1%	\$6,902,847	\$10,218,656	(\$3,315,809)	-32.4%	\$29,961,773	\$43,198,922	(\$13,237,149)	-30.6%
2	9/9/2017		\$71,784,232	\$65,952,418	\$5,831,814	8.8%	\$18,779,001	\$19,635,377	(\$856,376)	-4.4%	\$90,563,233	\$85,587,795	\$4,975,438	5.8%
3	9/16/2017		\$72,828,393	\$66,196,270	\$6,632,123	10.0%	\$19,679,292	\$20,915,290	(\$1,235,999)	-5.9%	\$92,507,685	\$87,111,560	\$5,396,125	6.2%
4	9/23/2017		\$71,147,147	\$64,383,005	\$6,764,142	10.5%	\$18,601,742	\$17,451,165	\$1,150,577	6.6%	\$89,748,889	\$81,834,170	\$7,914,719	9.7%
5	9/30/2017		\$74,749,619	\$67,349,951	\$7,399,668	11.0%	\$18,436,682	\$17,519,852	\$916,830	5.2%	\$93,186,301	\$84,869,803	\$8,316,498	9.8%
6	10/7/2017		\$78,134,381	\$71,598,690	\$6,535,691	9.1%	\$19,297,281	\$18,211,107	\$1,086,174	6.0%	\$97,431,662	\$89,809,797	\$7,621,865	8.5%
7	10/14/2017		\$74,084,207	\$69,444,762	\$4,639,445	6.7%	\$19,185,335	\$18,075,261	\$1,110,074	6.1%	\$93,269,542	\$87,520,023	\$5,749,519	6.6%
8	10/21/2017		\$77,631,892	\$69,317,066	\$8,314,826	12.0%	\$19,573,636	\$18,422,336	\$1,151,300	6.2%	\$97,205,528	\$87,739,402	\$9,466,126	10.8%
9	10/28/2017		\$76,385,130	\$69,729,599	\$6,655,531	9.5%	\$18,788,634	\$18,535,248	\$253,386	1.4%	\$95,173,764	\$88,264,847	\$6,908,917	7.8%
10	11/4/2017		\$78,814,323	\$73,451,702	\$5,362,621	7.3%	\$19,564,629	\$20,151,939	(\$587,310)	-2.9%	\$98,378,952	\$93,603,641	\$4,775,312	5.1%
11	11/11/2017		\$78,572,697	\$70,998,320	\$7,574,377	10.7%	\$19,317,440	\$19,925,460	(\$608,020)	-3.1%	\$97,890,137	\$90,923,780	\$6,966,358	7.7%
12	11/18/2017		\$81,674,704	\$75,265,196	\$6,409,508	8.5%	\$19,938,001	\$21,424,637	(\$1,486,636)	-6.9%	\$101,612,705	\$96,689,833	\$4,922,872	5.1%
13	11/25/2017		\$84,916,870	\$68,983,157	\$15,933,713	23.1%	\$19,968,524	\$24,223,331	(\$4,254,808)	-17.6%	\$104,885,393	\$93,206,488	\$11,678,905	12.5%
14	12/2/2017		\$81,453,005	\$72,688,514	\$8,764,491	12.1%	\$21,685,175	\$17,653,328	\$4,031,847	22.8%	\$103,138,180	\$90,341,842	\$12,796,338	14.2%
15	12/9/2017		\$81,251,421	\$71,676,549	\$9,574,872	13.4%	\$21,277,106	\$18,150,590	\$3,126,516	17.2%	\$102,528,526	\$89,827,139	\$12,701,388	14.1%
16	12/16/2017		\$83,850,250	\$73,909,726	\$9,940,524	13.4%	\$23,199,797	\$19,814,333	\$3,385,464	17.1%	\$107,050,047	\$93,724,059	\$13,325,988	14.2%
17	12/23/2017		\$87,941,872	\$77,369,179	\$10,572,693	13.7%	\$27,161,624	\$19,276,415	\$7,885,209	40.9%	\$115,103,496	\$96,645,594	\$18,457,902	19.1%
18	12/30/2017		\$88,089,746	\$80,868,854	\$7,220,892	8.9%	\$36,811,359	\$19,289,161	\$17,522,199	90.8%	\$124,901,105	\$100,158,015	\$24,743,091	24.7%
19	1/6/2018		\$85,627,935	\$73,328,624	\$12,299,311	16.8%	\$61,522,424	\$18,611,644	\$42,910,781	230.6%	\$147,150,359	\$91,940,268	\$55,210,091	60.0%
20	1/13/2018		\$84,788,310	\$73,471,643	\$11,316,667	15.4%	\$19,797,694	\$20,351,397	(\$553,703)	-2.7%	\$104,586,004	\$93,823,040	\$10,762,964	11.5%
21	1/20/2018		\$79,736,335	\$72,229,342	\$7,506,993	10.4%	\$18,928,359	\$20,349,310	(\$1,420,951)	-7.0%	\$98,664,694	\$92,578,652	\$6,086,042	6.6%
22	1/27/2018		\$84,274,095	\$72,056,793	\$12,217,302	17.0%	\$20,031,471	\$21,668,657	(\$1,637,186)	-7.6%	\$104,305,566	\$93,725,450	\$10,580,116	11.3%
23	2/3/2018		\$86,988,911	\$77,292,806	\$9,696,105	12.5%	\$21,857,656	\$22,161,789	(\$304,133)	-1.4%	\$108,846,566	\$99,454,595	\$9,391,972	9.4%
24	2/10/2018		\$89,937,200	\$78,699,192	\$11,238,008	14.3%	\$22,787,411	\$22,100,245	\$687,166	3.1%	\$112,724,611	\$100,799,437	\$11,925,174	11.8%
25	2/17/2018		\$87,786,021	\$77,864,124	\$9,921,897	12.7%	\$23,638,676	\$24,776,465	(\$1,137,789)	-4.6%	\$111,424,697	\$102,640,589	\$8,784,109	8.6%
26	2/24/2018			\$80,287,015				\$28,133,116				\$108,420,131		
27	3/3/2018			\$87,500,184				\$20,213,859				\$107,714,043		
28	3/10/2018			\$84,966,053				\$21,024,757				\$105,990,810		
29	3/17/2018			\$82,972,977				\$20,434,291				\$103,407,268		
30	3/24/2018			\$82,217,628				\$20,282,992				\$102,500,620		
31	3/31/2018			\$86,271,920				\$19,497,142				\$105,769,062		
32	4/7/2018			\$81,499,404				\$17,854,294				\$99,353,698		
33	4/14/2018			\$81,831,134				\$17,865,636				\$99,696,770		
34	4/21/2018			\$80,531,863				\$18,337,257				\$98,869,120		
35	4/28/2018			\$81,433,819				\$18,956,981				\$100,390,800		
36	5/5/2018			\$84,857,262				\$19,489,624				\$104,346,886		
37	5/12/2018			\$81,090,824				\$19,420,237				\$100,511,061		
38	5/19/2018			\$80,557,866				\$20,939,291				\$101,497,157		
39	5/26/2018			\$78,141,293				\$21,072,651				\$99,213,944		
40	6/2/2018			\$78,991,820				\$23,569,252				\$102,561,072		
41	6/9/2018			\$77,859,970				\$29,337,930				\$107,197,900		
42	6/16/2018			\$75,964,093				\$18,618,777				\$94,582,870		

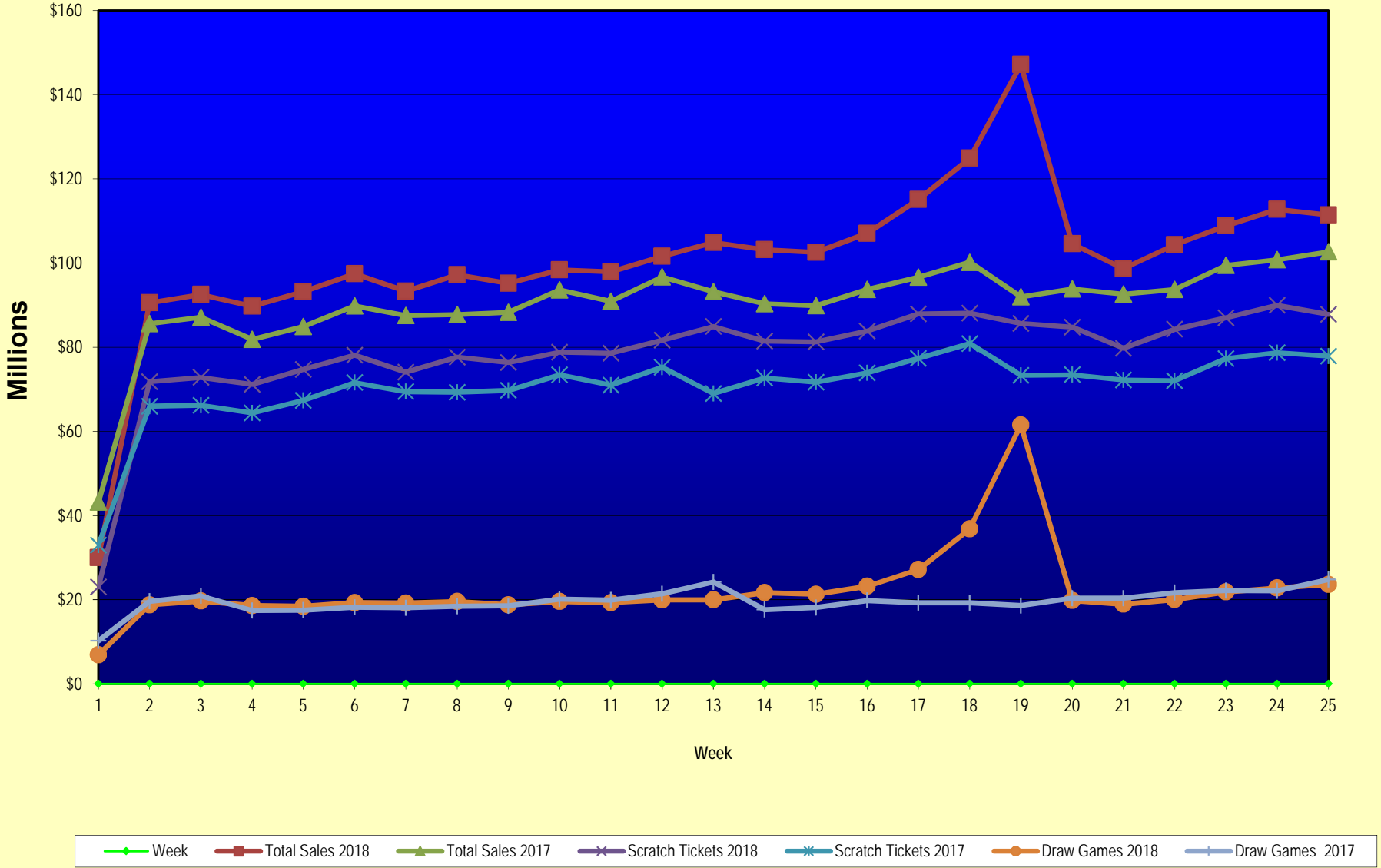
Texas Lottery Commission  
Fiscal Year Over Year Change in Sales  
Unaudited  
FY 2018 Compared to FY 2017

			SCRATCH TICKETS				DRAW GAMES				TOTAL SALES			
FY 2018			FY 2018	FY 2017	Difference	% change - Cumulative Sales	FY 2018	FY 2017	Difference	% change - Cumulative Sales	FY 2018	FY 2017	Difference	% change - Cumulative Sales
Week	Week Ending													
43	6/23/2018			\$75,379,863				\$18,464,310				\$93,844,173		
44	6/30/2018			\$76,450,854				\$19,685,004				\$96,135,858		
45	7/7/2018			\$75,420,516				\$20,817,697				\$96,238,213		
46	7/14/2018			\$74,068,426				\$21,553,240				\$95,621,666		
47	7/21/2018			\$75,926,884				\$21,909,933				\$97,836,817		
48	7/28/2018			\$68,526,927				\$22,791,762				\$91,318,689		
49	8/4/2018			\$74,104,794				\$27,396,555				\$101,501,349		
50	8/11/2018			\$73,356,820				\$37,340,879				\$110,697,699		
51	8/18/2018			\$74,114,510				\$42,787,014				\$116,901,524		
52	8/25/2018			\$70,061,982				\$55,854,516				\$125,916,498		
	8/31/2018 **			\$43,727,573				\$9,679,652				\$53,407,225		
Total thru Current Week			\$1,965,507,621	\$1,767,105,748	\$198,401,873	11.2%	\$556,731,791	\$488,912,988	\$67,818,803	13.9%	\$2,522,239,412	\$2,256,018,736	\$266,220,676	11.8%
Fiscal Year Total			\$1,965,507,621	\$3,935,220,022			\$556,731,791	\$1,142,241,630			\$2,522,239,412	\$5,077,461,652		

\* FY 18 includes 2 days; FY 17 includes 3 days

\*\* FY 18 includes 6 days; FY 17 includes 5 days

### Texas Lottery Commission Fiscal Year Over Year Change in Sales



Note: Week 1 is not a full week of sales as this report is prepared on a Fiscal Year basis.

Texas Lottery Commission  
Scratch Tickets by Price Point  
Sales, Prize Expense, Sales Contribution and Payout Percentage With Year Over Year Changes  
Unaudited

Fiscal Year	Price Point	# of Active Games	FY Sales	% of Scratch Ticket Sales	Year over Year Change in Sales	FY Prize Expense	Year over Year Change in Prize Expense	FY Sales Contribution	Year over Year Change in Contribution	Average Prize Payout %	Year over Year Change in Payout %
2017	\$1.00	19	70,630,045	4.0%		42,634,166		27,995,879		60.4%	0.2%
Through	\$2.00	24	152,709,094	8.6%		99,476,287		53,232,807		65.1%	-0.1%
2/18/2017	\$3.00	9	124,056,174	7.0%		81,788,885		42,267,289		65.9%	0.1%
	\$5.00	46	561,698,575	31.8%		381,676,330		180,022,245		68.0%	0.0%
	\$10.00	18	380,205,130	21.5%		267,813,487		112,391,643		70.4%	0.4%
	\$20.00	12	387,983,080	22.0%		290,735,986		97,247,094		74.9%	0.0%
	\$50.00	4	89,823,650	5.1%		69,892,084		19,931,566		77.8%	0.0%
<b>Total</b>		<b>132</b>	<b>\$1,767,105,748</b>			<b>\$1,234,017,226</b>		<b>\$533,088,522</b>		<b>69.8%</b>	<b>0.4%</b>
2018	\$1.00	19	75,590,244	3.8%		45,552,772		30,037,472		60.3%	0.0%
Through	\$2.00	21	137,611,244	7.0%		89,509,348		48,101,896		65.0%	-0.1%
2/17/2018	\$3.00	11	138,778,602	7.1%		91,564,669		47,213,933		66.0%	0.1%
	\$5.00	49	560,583,621	28.5%		381,176,565		179,407,057		68.0%	0.1%
	\$10.00	17	463,169,730	23.6%		324,576,195		138,593,535		70.1%	-0.3%
	\$20.00	16	440,116,980	22.4%		329,879,914		110,237,066		75.0%	0.0%
	\$50.00	4	149,657,200	7.6%		116,671,278		32,985,922		78.0%	0.1%
<b>Total</b>		<b>137</b>	<b>\$1,965,507,621</b>			<b>\$1,378,930,740</b>		<b>\$586,576,881</b>		<b>70.2%</b>	<b>0.4%</b>
Variance	\$1.00	0	4,960,199		7.0%	2,918,605	6.8%	2,041,594	7.3%	-0.10%	
2018 to	\$2.00	-3	-15,097,850		-9.9%	-9,966,939	-10.0%	-5,130,911	-9.6%	-0.10%	
2017	\$3.00	2	14,722,428		11.9%	9,775,784	12.0%	4,946,644	11.7%	0.05%	
	\$5.00	3	-1,114,954		-0.2%	-499,765	-0.1%	-615,188	-0.3%	0.05%	
	\$10.00	-1	82,964,600		21.8%	56,762,708	21.2%	26,201,892	23.3%	-0.36%	
	\$20.00	4	52,133,900		13.4%	39,143,928	13.5%	12,989,972	13.4%	0.02%	
	\$50.00	0	59,833,550		66.6%	46,779,193	66.9%	13,054,357	65.5%	0.15%	
<b>Total</b>		<b>5</b>	<b>\$198,401,873</b>		<b>11.2%</b>	<b>\$144,913,514</b>	<b>11.7%</b>	<b>\$53,488,359</b>	<b>10.0%</b>	<b>0.32%</b>	

Notes - Scratch Ticket Variances

Texas Lottery Commission  
Scratch Tickets by Price Point  
Sales, Prize Expense, Sales Contribution and Payout Percentage With Year Over Year Changes  
Unaudited

			FY 2018		FY 2017	Difference
Sales	\$1 - \$5		\$912,563,711		\$909,093,888	\$3,469,823
Prize Exp.	\$1 - \$5		\$607,803,353		\$605,575,669	\$2,227,685
Sales Cont.	\$1 - \$5		\$304,760,358		\$303,518,219	\$1,242,139
Prize Exp. %	\$1 - \$5		66.6%		66.6%	0.0%
			FY 2018		FY 2017	Difference
Sales	\$10 - \$50		\$1,052,943,910		\$858,011,860	\$194,932,050
Prize Exp.	\$10 - \$50		\$771,127,387		\$628,441,557	\$142,685,830
Sales Cont.	\$10 - \$50		\$281,816,523		\$229,570,303	\$52,246,220
Prize Exp. %	\$10 - \$50		73.2%		73.2%	0.0%
			FY 2018		FY 2017	Difference
Sales	Scratch		\$1,965,507,621		\$1,767,105,748	\$198,401,873
Prize Exp.	Scratch		\$1,378,930,740		\$1,234,017,226	\$144,913,514
Sales Cont.	Scratch		\$586,576,881		\$533,088,522	\$53,488,359
Prize Exp. %	Scratch		70.2%		69.8%	0.3%

			FY 2018		FY 2017	Difference
Sales	\$1 - \$10		\$1,375,733,441		\$1,289,299,018	\$86,434,423
Prize Exp.	\$1 - \$10		\$932,379,548		\$873,389,155	\$58,990,393
Sales Cont.	\$1 - \$10		\$443,353,893		\$415,909,863	\$27,444,030
Prize Exp. %	\$1 - \$10		67.8%		67.7%	0.0%
			FY 2018		FY 2017	Difference
Sales	\$20 - \$50		\$589,774,180		\$477,806,730	\$111,967,450
Prize Exp.	\$20 - \$50		\$446,551,192		\$360,628,070	\$85,923,121
Sales Cont.	\$20 - \$50		\$143,222,988		\$117,178,660	\$26,044,329
Prize Exp. %	\$20 - \$50		75.7%		75.5%	0.2%
			FY 2018		FY 2017	Difference
Sales	Scratch		\$1,965,507,621		\$1,767,105,748	\$198,401,873
Prize Exp.	Scratch		\$1,378,930,740		\$1,234,017,226	\$144,913,514
Sales Cont.	Scratch		\$586,576,881		\$533,088,522	\$53,488,359
Prize Exp. %	Scratch		70.2%		69.8%	0.3%



Texas Lottery Commission  
**Weekly Sales Summary**  
**& Comparison to Previous Week**  
 Unaudited

	Week Ending 2/17/2018	% of Sales	Week Ending 2/10/2018	% of Sales	\$ change	% change
	<u>THIS WEEK</u>		<u>LAST WEEK</u>			
Total Sales	<u>\$111,424,697</u>		<u>\$112,724,611</u>		<u>-\$1,299,913</u>	-1.15%
Scratch Tickets	<u>\$87,786,021</u>	78.8%	<u>\$89,937,200</u>	79.8%	<u>-\$2,151,179</u>	-2.39%
Lotto	\$2,179,635	2.0%	\$2,111,426	1.9%	\$68,209	3.23%
Lotto Extra	\$485,269	0.4%	\$471,879	0.4%	\$13,390	2.84%
Pick 3	\$5,328,504	4.8%	\$5,202,565	4.6%	\$125,940	2.42%
Pick 3 Sum It Up	\$110,653	0.1%	\$103,949	0.1%	\$6,704	6.45%
Cash Five	\$829,413	0.7%	\$834,193	0.7%	-\$4,780	-0.57%
Texas Two Step	\$1,365,566	1.2%	\$1,760,463	1.6%	-\$394,897	-22.43%
Mega Millions	\$3,768,869	3.4%	\$3,471,268	3.1%	\$297,601	8.57%
Megaplier	\$581,183	0.5%	\$548,853	0.5%	\$32,330	5.89%
MM Just the Jackpot	\$29,718	0.0%	\$28,242	0.0%	\$1,476	5.23%
Daily 4	\$2,101,483	1.9%	\$2,104,711	1.9%	-\$3,228	-0.15%
Daily 4 Sum It Up	\$112,159	0.1%	\$116,909	0.1%	-\$4,750	-4.06%
Powerball	\$5,169,501	4.6%	\$4,522,707	4.0%	\$646,794	14.30%
Power Play	\$780,285	0.7%	\$701,337	0.6%	\$78,948	11.26%
All or Nothing	\$561,011	0.5%	\$568,804	0.5%	-\$7,793	-1.37%
Texas Triple Chance	<u>\$235,428</u>	0.2%	<u>\$240,106</u>	0.2%	<u>-\$4,678</u>	-1.95%
Total Draw Game Sales	<u>\$23,638,676</u>		<u>\$22,787,411</u>		<u>\$851,266</u>	3.74%

\* Totals may not sum due to rounding.

Texas Lottery Commission  
Weekly Sales Summary  
Unaudited

SCRATCH TICKETS  
TOP TEN SELLING GAMES

For the week ending: 2/17/2018

Rank	Price Point	Game	Sales (Millions)
1	\$ 20	\$100 MILLION TEXAS RICHES	\$ 5.895
2	\$ 10	MEGA LOTERIA	\$ 4.416
3	\$ 10	SUPER 7'S	\$ 4.093
4	\$ 20	MEGA 7'S	\$ 3.778
5	\$ 5	THE GAME OF LUCK	\$ 3.564
6	\$ 50	TEXAS LOTTERY PLATINUM	\$ 3.406
7	\$ 20	\$1,000,000 BIG MONEY	\$ 3.345
8	\$ 5	SUPER LOTERIA	\$ 3.310
9	\$ 5	LUCKY 7'S	\$ 2.959
10	\$ 10	\$50 OR \$100!	\$ 2.720

Texas Lottery Commission  
Prize Payout Tracking Report  
Unaudited

Through the week ending: 2/17/2018

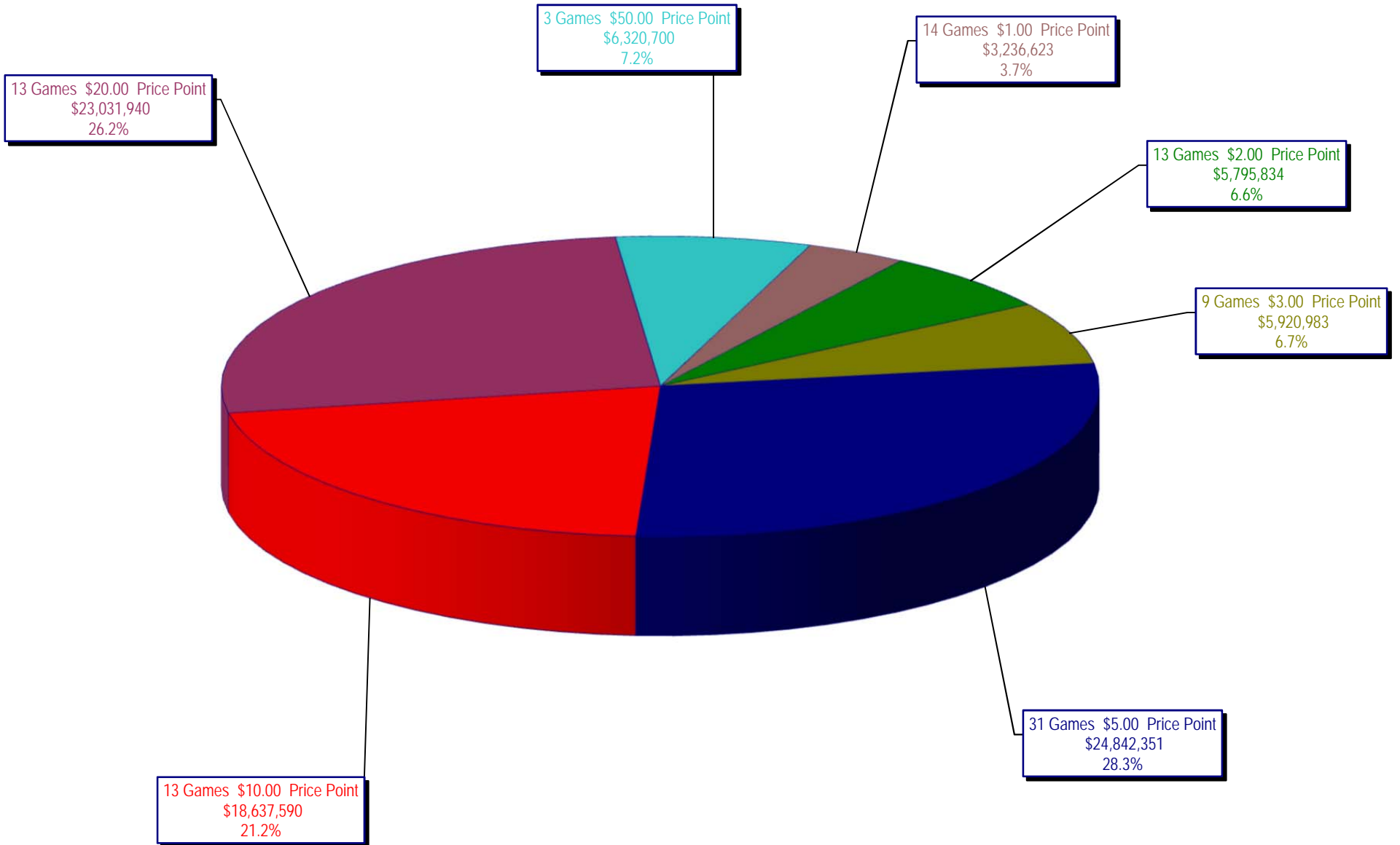
Draw Game Sales

		FY Sales Through Week Ending 2/17/2018		FY Prize Expense Through Week Ending 2/17/2018	Actual* Prize Payout	Base Payout (Prize Pool)
Lotto	\$	53,127,553	\$	32,163,680	60.54%	50.00%
Lotto Extra		11,520,724		6,487,462	56.31%	53.70%
Pick 3		117,026,238		58,222,450	49.75%	50.00%
Pick 3 Sum It Up		2,330,751		1,089,875	46.76%	50.00%
Cash Five		19,856,904		9,928,615	50.00%	50.00%
Texas Two Step		24,277,228		12,127,675	49.95%	50.00%
Mega Millions		89,516,893		46,891,919	52.38%	50.00%**
Megaplier		15,275,695		7,798,178	51.05%	N/A
MM Just the Jackpot		817,176		406,057	49.69%	50.00%**
Daily 4		49,912,891		28,646,875	57.39%	50.00%
Daily 4 Sum It Up		2,720,392		1,141,209	41.95%	50.00%
Powerball		131,618,839		65,962,755	50.12%	50.00%**
Power Play		19,286,060		9,669,844	50.14%	N/A
All or Nothing		13,539,179		7,801,470	57.62%	55.98%
Texas Triple Chance		5,905,270		2,992,619	50.68%	54.42%
<b>Totals</b>	\$	<b>556,731,791</b>	\$	<b>291,330,683</b>	<b>52.33%</b>	

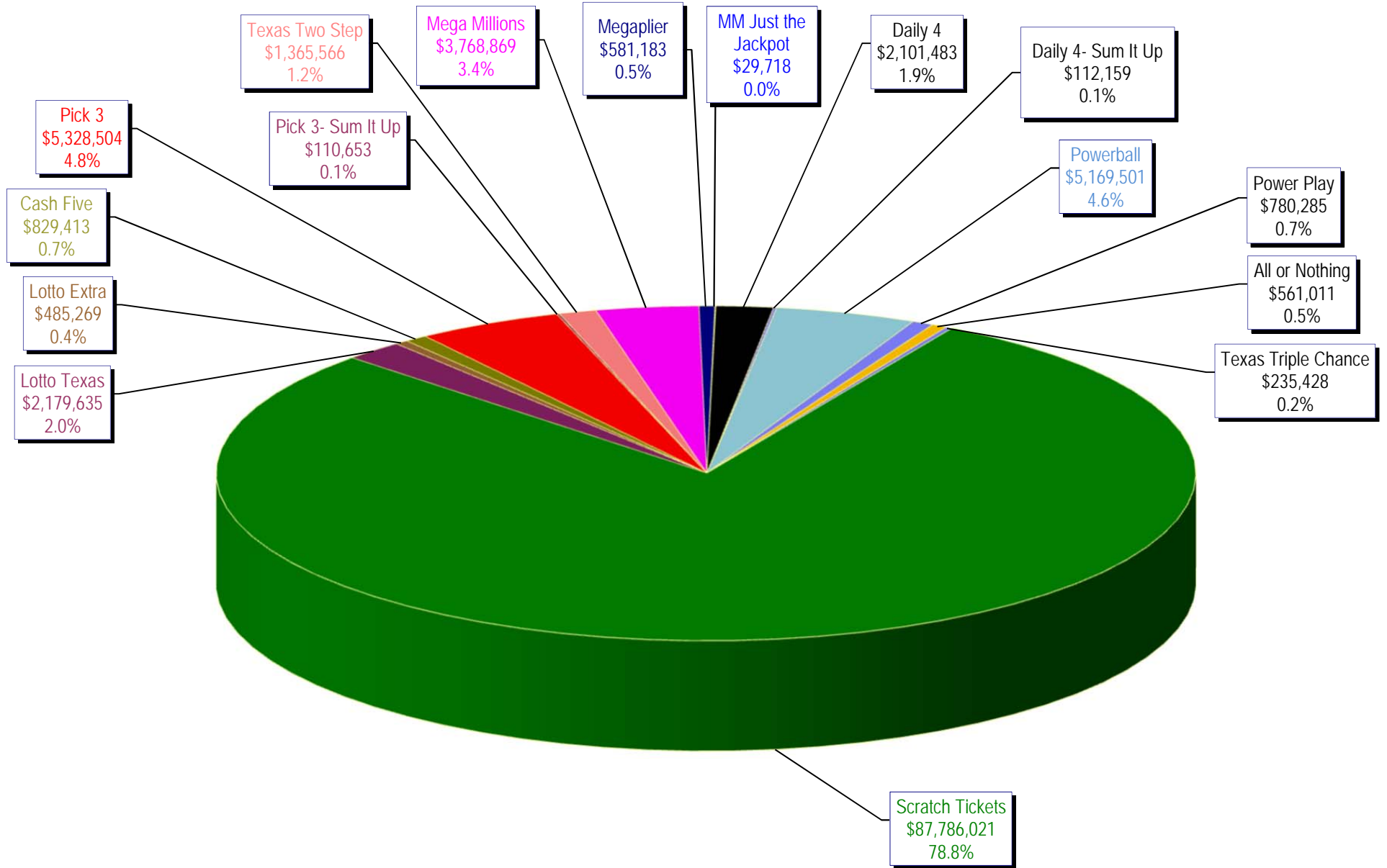
\* Before Unclaimed Prizes

\*\*Estimated; depends on # of guaranteed prizes won in Texas

Texas Lottery Commission  
Scratch Ticket Sales  
For the week ending 2/17/2018  
(Unaudited)



**Texas Lottery Commission**  
**All Game Sales**  
For the week ending 2/17/2018  
(Unaudited)



Texas Lottery Commission - Weekly Sales Summary for FY 2017 (Unaudited)

Week Ended	Scratch Tickets	New Games & Dates	Lotto Texas		Jackpot		Lotto Extra	Pick 3	Pick 3 Sum It Up	Cash Five	Texas Two Step	Jackpot		Mega Millions	Jackpot		Megaplier	MM Just the Jackpot	Daily 4	Daily 4 Sum It Up	Powerball	Jackpot		Power Play	All or Nothing	Texas Triple Chance	Total	Per Cap.
			W	S	W	S						M	TH		T	F						W	S					
9/2/2017*	66,786,499	0	1,882,138	7.75	8	407,969	4,127,448	87,462	745,315	757,964	225	250	1,839,333	45	53	546,532		1,675,002	88,460	3,160,562	53	68	527,201	510,296	226,818	83,368,998	2.99	
9/9/2017	71,784,232	1894 (\$1.N); 1895 (\$3.N); 1896 (\$5.N); 1897 (\$10.N); 1898 (\$20.N) - 9/05/17	2,030,456	8.25	9	434,404	4,673,693	94,976	810,225	814,157	200	225	2,116,454	61	70	610,101		1,864,288	98,842	3,815,824	83	102	614,504	550,992	250,086	90,563,233	3.25	
9/16/2017	72,828,393	0	2,072,973	9.5	10.25	441,815	4,761,239	95,825	803,128	1,009,847	275	400	2,218,181	76	86	632,423		1,969,938	107,496	4,120,318	115	132	647,273	549,860	248,976	92,507,685	3.32	
9/23/2017	71,147,147	2000 (\$5.N); 1885 (\$10.N) - 9/18/17	2,083,698	10.75	11.5	444,009	4,652,157	91,944	799,261	958,113	550	200	2,417,135	94	104	676,790		1,999,292	111,399	3,062,637	40	53	505,638	554,074	245,596	89,748,889	3.22	
9/30/2017	74,749,619	0	2,123,157	12	12.75	453,258	4,787,745	93,462	817,582	914,011	225	300	1,798,854	15	20	540,169		2,140,708	114,176	3,298,744	66	80	535,906	567,658	251,252	93,186,301	3.34	
10/7/2017	78,134,381	1857 (\$1.N); 1871 (\$5.N); 2002 (\$20.N) - 10/02/17	2,158,233	13.5	14	461,982	4,884,513	93,622	837,916	1,157,363	425	575	1,859,000	25	30	555,420		2,086,885	112,246	3,678,352	94	112	585,624	570,242	255,884	97,431,662	3.50	
10/14/2017	74,084,207	0	2,161,597	14.75	15.5	460,731	4,743,121	91,735	812,165	832,638	200	225	1,899,412	36	43	564,073		2,060,922	109,910	4,013,728	128	143	621,796	564,614	248,894	93,269,542	3.35	
10/21/2017	77,631,892	2003 (\$2.N); 2004 (\$5.N); 1899 (\$50.N) - 10/16/17	2,191,085	16	16.75	466,612	4,682,503	94,156	810,073	1,008,511	300	425	1,677,423	15	20	505,340		2,117,469	116,022	4,422,740	156	173	670,007	563,200	248,496	97,205,528	3.49	
10/28/2017	76,385,130	0	2,227,162	17.25	18.25	475,194	4,654,638	92,765	797,066	786,381	200	200	1,737,391	25	30	493,983	22,971	2,144,198	121,467	3,852,082	191	40	595,303	547,396	240,638	95,173,764	3.42	
11/4/2017	78,814,323	0	2,333,965	18.75	19.25	494,349	4,926,697	96,245	820,269	887,674	225	275	2,753,000	40	48	421,360	112,668	2,205,239	114,585	3,078,822	52	64	500,061	571,658	248,038	98,378,952	3.53	
11/11/2017	78,572,697	2005 (\$1.N); 2006 (\$3.N); 2007 (\$5.N); 2008 (\$10.N) - 11/06/17	2,315,922	19.75	20.5	490,024	4,901,274	94,521	817,975	894,972	400	200	2,652,012	59	71	410,066	62,832	2,069,360	110,879	3,183,712	75	90	507,890	563,738	242,264	97,890,137	3.51	
11/18/2017	81,674,704	2085 (\$2.N); 1891 (\$5.N); 2011 (\$10.N) - 11/15/17	2,379,541	21.25	21.75	504,693	4,782,395	93,156	818,168	882,520	225	275	2,820,440	82	95	433,282	53,445	2,053,707	108,480	3,638,718	103	119	564,829	562,306	242,322	101,612,705	3.65	
11/25/2017	84,916,870	0	2,353,671	22.5	23.25	504,985	4,590,443	87,556	779,967	1,056,541	400	525	2,980,136	106	119	452,693	45,225	1,908,926	99,032	3,780,406	134	149	582,194	522,808	223,942	104,885,393	3.76	
12/2/2017	81,453,005	1862 (\$5.N) - 11/29/17	2,485,060	24	24.75	527,939	4,873,294	92,503	822,515	1,037,952	700	200	3,461,973	132	145	516,938	45,540	2,057,256	111,002	4,218,618	163	177	638,061	556,758	239,766	103,138,180	3.70	
12/9/2017	81,251,421	2019 (\$1.N); 2010 (\$5.N); 2014 (\$20.N) - 12/04/17	1,889,914	5	5	412,797	4,711,132	88,700	815,769	867,201	225	275	3,625,922	160	176	538,523	45,915	2,019,801	112,110	4,674,778	193	212	693,130	546,064	235,350	102,528,526	3.68	
12/16/2017	83,850,250	1877 (\$5.N) - 12/11/17	1,956,432	5.25	5.5	429,971	4,788,793	92,152	818,587	899,138	400	200	4,204,546	191	208	610,115	45,642	2,099,981	116,295	5,539,284	229	250	809,986	551,440	237,436	107,050,047	3.84	
12/23/2017	87,941,872	1879 (\$2.N); 2013 (\$5.N) - 12/18/17	2,124,516	5	5.25	469,230	4,942,394	97,078	837,255	918,506	225	275	5,341,776	223	253	751,656	48,156	2,180,958	120,594	7,471,900	269	300	1,054,970	557,540	245,096	115,103,496	4.13	
12/30/2017	88,089,746	0	2,360,842	5.5	5.75	519,750	4,652,815	94,254	811,994	1,034,373	400	550	8,764,544	277	306	1,147,310	65,076	2,060,790	119,090	12,711,198	337	384	1,676,130	555,378	237,816	124,901,105	4.48	
1/6/2018	85,627,935	2012 (\$1.N); 2016 (\$3.N); 2020 (\$5.N); 2018 (\$10.N); 2021 (\$20.N) - 1/02/18	2,549,259	6	6.25	569,992	4,638,623	101,857	819,523	806,400	200	225	17,181,579	361	450	2,125,075	99,750	1,971,281	118,574	26,448,160	460	570	3,306,119	536,082	250,152	147,150,359	5.28	
1/13/2018	84,788,310	2078 (\$2.N) - 1/10/18	2,040,927	6.5	6.75	448,742	4,766,520	102,572	825,080	1,089,485	300	425	2,922,316	40	45	466,464	29,142	1,999,808	111,260	3,619,230	40	50	576,948	559,134	240,066	104,586,004	3.75	
1/20/2018	79,736,335	1874 (\$2.N); 2023 (\$5.N) - 01/15/18	1,966,838	7	7.25	435,886	4,577,006	94,097	795,104	1,022,928	600	200	2,755,698	50	55	444,651	27,351	1,874,998	99,795	3,508,516	62	78	562,582	531,264	231,646	98,664,694	3.54	
1/27/2018	84,274,095	0	2,035,827	7.5	7.75	453,370	4,700,198	94,322	814,607	930,734	225	300	3,019,030	63	76	484,896	26,847	2,022,100	105,822	3,921,400	92	112	620,657	563,096	238,566	104,305,566	3.74	
2/3/2018	86,988,911	0	2,109,623	8.25	9	472,504	5,142,594	103,765	837,769	1,260,482	425	575	3,268,918	89	104	523,436	28,656	2,142,446	116,232	4,349,986	127	145	683,141	575,884	242,220	108,846,566	3.91	

Texas Lottery Commission - Weekly Sales Summary for FY 2017 (Unaudited)

Week Ended	Scratch Tickets	New Games & Dates	Lotto Texas	Jackpot W	S	Lotto Extra	Pick 3	Pick 3 Sum It Up	Cash Five	Texas Two Step	Jackpot M	TH	Mega Millions	Jackpot T	F	Megaplier	MM Just the Jackpot	Daily 4	Daily 4 Sum It Up	Powerball	Jackpot W	S	Power Play	All or Nothing	Texas Triple Chance	Total	Per Cap.
2/10/2018	89,937,200	1622 (\$1.N); 2025 (\$5.N); 1884 (\$20.N) - 02/05/18	2,111,426	9.5	10.25	471,879	5,202,565	103,949	834,193	1,760,463	750	975	3,471,268	120	136	548,853	28,242	2,104,711	116,909	4,522,707	165	184	701,337	568,804	240,106	112,724,611	4.05
2/17/2018	87,786,021	0	2,179,635	11	11.75	485,269	5,328,504	110,653	829,413	1,365,566	1,225	200	3,768,869	153	168	581,183	29,718	2,101,483	112,159	5,169,501	203	223	780,285	561,011	235,428	111,424,697	4.00
weekly change	-2.4%		3.2%			2.8%	2.4%	6.4%	-0.6%	-22.4%			8.6%			5.9%	5.2%	-0.2%	-4.1%	14.3%			11.3%	-1.4%	-1.9%		-1.2%
	<b>SALES</b>		<b>SALES</b>			<b>SALES</b>	<b>SALES</b>	<b>SALES</b>	<b>SALES</b>	<b>SALES</b>			<b>SALES</b>			<b>SALES</b>	<b>SALES</b>	<b>SALES</b>	<b>SALES</b>	<b>SALES</b>			<b>SALES</b>	<b>SALES</b>	<b>SALES</b>	<b>SALES</b>	<b>% of Sales</b>
Calendar Year to date 2017	588,377,342		14,888,927			3,315,543	34,195,902	707,215	5,708,006	8,166,321			35,872,542			5,110,432	266,433	14,137,973	775,912	50,877,168			7,148,002	3,864,373	1,664,284	775,076,374	100.0%
Fiscal Year to date 2018	1,965,507,621		53,127,553			11,520,724	117,026,238	2,330,751	19,856,904	24,277,228			89,516,893			15,275,695	817,176	49,912,891	2,720,392	131,618,839			19,286,060	13,539,179	5,905,270	2,522,239,412	100.0%
*Full week includes 5 days from FY17																											