



*WEEKLY SALES SUMMARY*

Unaudited

[Week Ending: 02/18/2012](#)

Texas Lottery Commission  
Fiscal Year to Date Sales Comparison  
Unaudited

Through the week ending 02/18/12 (25 weeks)

Sales by Game	FY 2010 *	FY 2011 **	FY 2012	\$ Change		% Change	
				FY 2012 to FY 2010	FY 2012 to FY 2011 to	FY 2012 to FY 2010	FY 2012 to FY 2011
Instants	\$ 1,318,556,884	\$ 1,322,847,244	\$ 1,394,527,941	\$ 75,971,057	\$ 71,680,697	5.8%	5.4%
Lotto Texas	127,217,938	81,895,494	82,330,062	-44,887,876	434,568	-35.3%	0.5%
Pick 3	127,380,135	129,006,950	125,441,920	-1,938,215	-3,565,030	-1.5%	-2.8%
Pick 3 Sum It Up	2,514,615	2,611,239	2,566,288	51,673	-44,952	2.1%	-1.7%
Cash Five	31,972,287	30,477,989	30,544,541	-1,427,746	66,552	-4.5%	0.2%
Texas Two Step	21,177,096	22,523,020	30,218,111	9,041,015	7,695,091	42.7%	34.2%
Mega Millions	89,333,336	89,591,564	70,555,228	-18,778,108	-19,036,336	-21.0%	-21.2%
Megaplier	19,980,747	18,147,256	15,657,954	-4,322,793	-2,489,302	-21.6%	-13.7%
Daily 4	24,704,275	26,748,358	29,680,078	4,975,803	2,931,720	20.1%	11.0%
Daily 4 Sum It Up	2,344,185	2,095,165	2,189,563	-154,623	94,398	-6.6%	4.5%
Powerball	5,543,535	40,191,138	73,743,039	68,199,504	33,551,901	-	83.5%
Power Play	1,287,902	9,677,053	14,060,876	12,772,974	4,383,823	-	45.3%
<b>Total</b>	<b>\$ 1,772,012,934</b>	<b>\$ 1,775,812,470</b>	<b>\$ 1,871,515,599</b>	<b>\$ 99,502,665</b>	<b>\$ 95,703,129</b>	<b>5.6%</b>	<b>5.4%</b>

\* 2 extra days

\*\* 1 extra day

Texas Lottery Commission  
Fiscal Year to Date Cumulative Average Sales Comparison  
Unaudited

Through the week ending 02/18/2012 (25 weeks)

Sales by Game	FY 2010	FY 2011	FY 2012
Instant	\$ 7,621,716	\$ 7,690,972	\$ 8,155,134
Lotto Texas	735,364	476,137	481,462
Pick 3	736,301	750,040	733,578
Pick 3 Sum It Up	14,535	15,182	15,008
Cash Five	184,811	177,198	178,623
Texas Two Step	122,411	130,948	176,714
Mega Millions	516,378	520,881	412,604
Megaplier	115,496	105,507	91,567
Daily 4	142,799	155,514	173,568
Daily 4 Sum It Up	13,550	12,181	12,804
Powerball	263,978 *	233,669	431,246
Power Play	61,329 *	56,262	82,227
<b>Total</b>	<b>\$ 10,528,668</b>	<b>\$ 10,324,491</b>	<b>\$ 10,944,536</b>

thru 02/20/2010

thru 02/19/2011

thru 02/18/2012

173 days

172 days

171 days

\* 21 days

Texas Lottery Commission  
Fiscal Year Over Year Change in Sales  
Unaudited  
FY 2012 Compared to FY 2011

Week	FY 2012 Week Ending	INSTANT TICKETS				ON-LINE GAMES				TOTAL SALES			
		FY 2012	FY 2011	Difference	% change - Cumulative Sales	FY 2012	FY 2011	Difference	% change - Cumulative Sales	FY 2012	FY 2011	Difference	% change - Cumulative Sales
1	9/3/2011**	\$25,147,181	\$31,659,033	(\$6,511,852)	-20.6%	\$9,704,561	\$11,430,717	(\$1,726,156)	-15.1%	\$34,851,742	\$43,089,750	(\$8,238,008)	-19.1%
2	9/10/2011	\$50,591,068	\$48,912,598	\$1,678,470	3.4%	\$17,681,853	\$16,398,160	\$1,283,693	7.8%	\$68,272,921	\$65,310,758	\$2,962,163	4.5%
3	9/17/2011	\$49,835,063	\$48,988,241	\$846,822	1.7%	\$16,842,326	\$17,166,827	(\$324,501)	-1.9%	\$66,677,389	\$66,155,068	\$522,321	0.8%
4	9/24/2011	\$49,777,138	\$48,471,310	\$1,305,828	2.7%	\$17,504,800	\$15,623,813	\$1,880,987	12.0%	\$67,281,938	\$64,095,123	\$3,186,815	5.0%
5	10/1/2011	\$51,040,274	\$50,145,138	\$895,136	1.8%	\$18,653,100	\$16,453,939	\$2,199,161	13.4%	\$69,693,374	\$66,599,077	\$3,094,297	4.6%
6	10/8/2011	\$53,715,157	\$50,918,591	\$2,796,566	5.5%	\$17,225,680	\$16,974,963	\$250,717	1.5%	\$70,940,837	\$67,893,554	\$3,047,283	4.5%
7	10/15/2011	\$51,942,121	\$49,096,011	\$2,846,110	5.8%	\$17,854,980	\$16,661,904	\$1,193,077	7.2%	\$69,797,101	\$65,757,915	\$4,039,187	6.1%
8	10/22/2011	\$52,837,769	\$50,158,946	\$2,678,823	5.3%	\$19,558,519	\$17,374,460	\$2,184,060	12.6%	\$72,396,288	\$67,533,406	\$4,862,883	7.2%
9	10/29/2011	\$52,206,644	\$49,775,287	\$2,431,357	4.9%	\$21,504,565	\$18,402,209	\$3,102,356	16.9%	\$73,711,209	\$68,177,496	\$5,533,713	8.1%
10	11/5/2011	\$56,265,310	\$53,337,848	\$2,927,462	5.5%	\$20,870,086	\$17,321,908	\$3,548,179	20.5%	\$77,135,396	\$70,659,756	\$6,475,641	9.2%
11	11/12/2011	\$55,682,645	\$52,285,479	\$3,397,166	6.5%	\$17,862,404	\$16,388,690	\$1,473,714	9.0%	\$73,545,049	\$68,674,169	\$4,870,880	7.1%
12	11/19/2011	\$54,978,079	\$52,424,036	\$2,554,043	4.9%	\$17,879,985	\$16,138,022	\$1,741,963	10.8%	\$72,858,064	\$68,562,058	\$4,296,006	6.3%
13	11/26/2011	\$53,942,448	\$51,262,518	\$2,679,930	5.2%	\$16,877,145	\$15,967,075	\$910,070	5.7%	\$70,819,593	\$67,229,593	\$3,590,000	5.3%
14	12/3/2011	\$57,153,469	\$56,385,259	\$768,210	1.4%	\$18,298,636	\$17,553,175	\$745,461	4.2%	\$75,452,105	\$73,938,434	\$1,513,671	2.0%
15	12/10/2011	\$55,318,284	\$56,540,048	(\$1,221,764)	-2.2%	\$19,033,326	\$17,703,352	\$1,329,975	7.5%	\$74,351,610	\$74,243,400	\$108,211	0.1%
16	12/17/2011	\$58,612,629	\$57,699,991	\$912,638	1.6%	\$20,045,279	\$18,465,282	\$1,579,997	8.6%	\$78,657,908	\$76,165,273	\$2,492,635	3.3%
17	12/24/2011	\$60,628,256	\$59,800,480	\$827,776	1.4%	\$22,572,986	\$19,635,771	\$2,937,215	15.0%	\$83,201,242	\$79,436,251	\$3,764,991	4.7%
18	12/31/2011	\$63,065,007	\$61,423,121	\$1,641,886	2.7%	\$19,948,521	\$26,122,257	(\$6,173,736)	-23.6%	\$83,013,528	\$87,545,378	(\$4,531,850)	-5.2%
19	1/7/2012	\$60,479,896	\$60,976,653	(\$496,757)	-0.8%	\$17,331,888	\$33,521,570	(\$16,189,682)	-48.3%	\$77,811,784	\$94,498,223	(\$16,686,439)	-17.7%
20	1/14/2012	\$57,689,526	\$50,099,433	\$7,590,093	15.2%	\$17,568,732	\$17,114,637	\$454,096	2.7%	\$75,258,258	\$67,214,070	\$8,044,189	12.0%
21	1/21/2012	\$58,704,854	\$53,143,646	\$5,561,208	10.5%	\$19,886,540	\$18,091,208	\$1,795,332	9.9%	\$78,591,394	\$71,234,854	\$7,356,540	10.3%
22	1/28/2012	\$57,611,325	\$54,096,128	\$3,515,197	6.5%	\$20,641,697	\$17,446,156	\$3,195,542	18.3%	\$78,253,022	\$71,542,284	\$6,710,739	9.4%
23	2/4/2012	\$65,553,366	\$53,433,592	\$12,119,774	22.7%	\$23,689,855	\$17,388,581	\$6,301,274	36.2%	\$89,243,221	\$70,822,173	\$18,421,048	26.0%
24	2/11/2012	\$75,070,485	\$60,277,094	\$14,793,391	24.5%	\$28,361,583	\$18,233,038	\$10,128,545	55.6%	\$103,432,068	\$78,510,132	\$24,921,936	31.7%
25	2/18/2012	\$66,679,947	\$61,536,763	\$5,143,184	8.4%	\$19,588,615	\$19,387,518	\$201,097	1.0%	\$86,268,562	\$80,924,281	\$5,344,281	6.6%
26	2/25/2012		\$59,046,203				\$20,054,404				\$79,100,607		
27	3/3/2012		\$60,537,060				\$19,478,807				\$80,015,867		
28	3/10/2012		\$59,997,361				\$19,601,658				\$79,599,019		
29	3/17/2012		\$57,835,554				\$21,189,563				\$79,025,117		
30	3/24/2012		\$57,911,940				\$29,729,651				\$87,641,591		
31	3/31/2012		\$60,407,139				\$19,519,264				\$79,926,403		
32	4/7/2012		\$60,704,285				\$19,455,317				\$80,159,602		
33	4/14/2012		\$57,663,398				\$17,866,867				\$75,530,265		
34	4/21/2012		\$56,740,216				\$17,429,326				\$74,169,542		
35	4/28/2012		\$58,042,011				\$17,104,548				\$75,146,559		
36	5/5/2012		\$66,509,159				\$17,744,833				\$84,253,992		
37	5/12/2012		\$53,769,716				\$17,783,942				\$71,553,658		
38	5/19/2012		\$53,704,228				\$18,623,882				\$72,328,110		
39	5/26/2012		\$52,310,134				\$19,115,921				\$71,426,055		
40	6/2/2012		\$53,256,725				\$18,462,603				\$71,719,328		
41	6/9/2012		\$54,293,614				\$17,213,019				\$71,506,633		
42	6/16/2012		\$52,688,230				\$17,534,413				\$70,222,643		

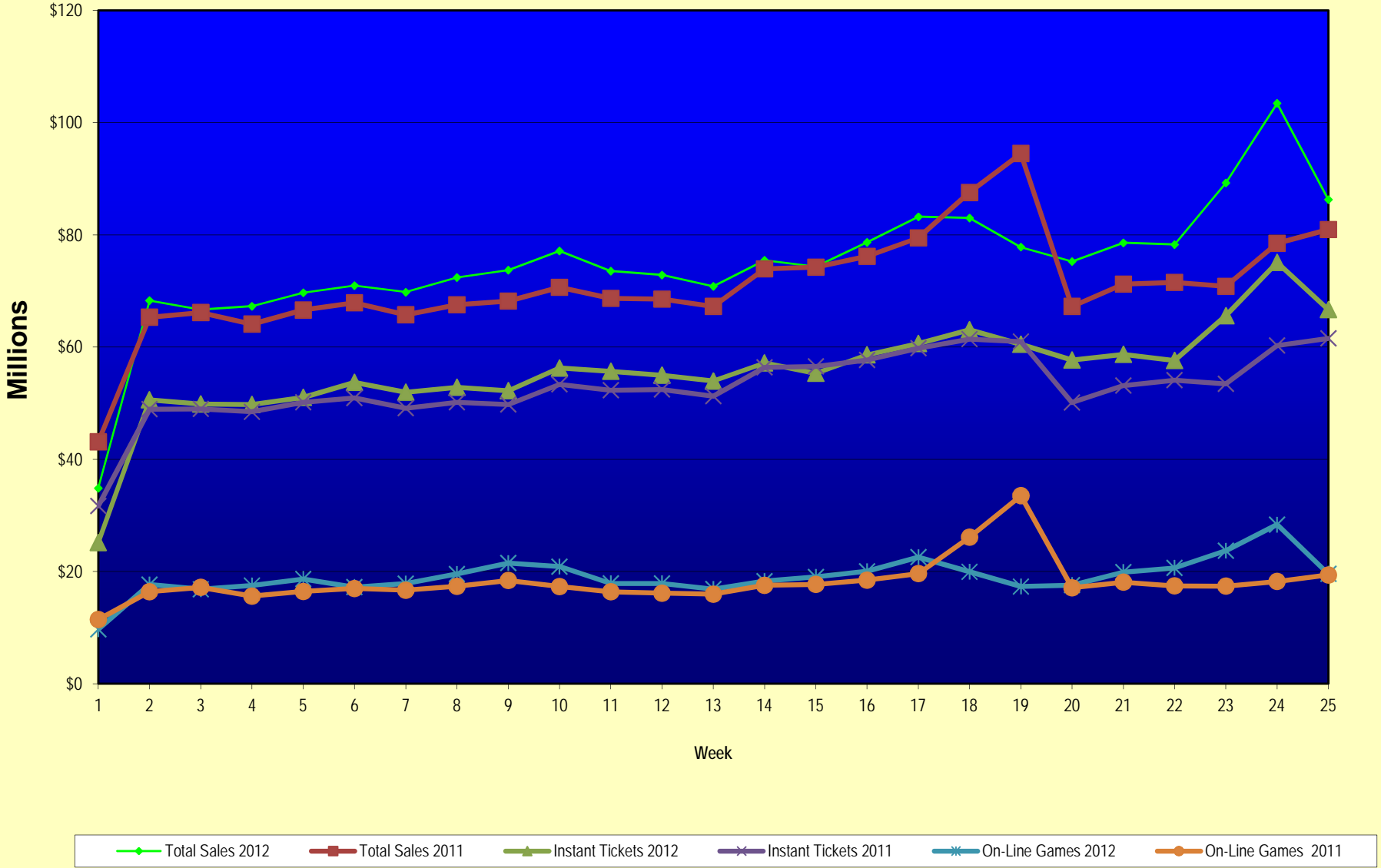
Note: Week 1 is not a full week of sales as this report is prepared on a Fiscal Year basis.

Texas Lottery Commission  
Fiscal Year Over Year Change in Sales  
Unaudited  
FY 2012 Compared to FY 2011

Week	FY 2012 Week Ending	INSTANT TICKETS				ON-LINE GAMES				TOTAL SALES			
		FY 2012	FY 2011	Difference	% change - Cumulative Sales	FY 2012	FY 2011	Difference	% change - Cumulative Sales	FY 2012	FY 2011	Difference	% change - Cumulative Sales
43	6/23/2012		\$53,174,595				\$17,086,937				\$70,261,532		
44	6/30/2012		\$53,687,509				\$18,406,785				\$72,094,294		
45	7/7/2012		\$53,054,685				\$16,211,989				\$69,266,674		
46	7/14/2012		\$51,161,290				\$16,945,733				\$68,107,023		
47	7/21/2012		\$50,807,750				\$17,362,213				\$68,169,963		
48	7/28/2012		\$51,277,179				\$18,870,764				\$70,147,943		
49	8/4/2012		\$53,320,489				\$20,922,034				\$74,242,523		
50	8/11/2012		\$50,914,022				\$19,467,124				\$70,381,146		
51	8/18/2012		\$49,905,898				\$17,419,045				\$67,324,943		
52	8/25/2012		\$49,424,242				\$16,837,474				\$66,261,716		
	8/31/2012		\$27,274,804				\$8,600,118				\$35,874,922		
Total thru Current Week		\$1,394,527,941	\$1,322,847,244	\$71,680,697	5.4%	\$476,987,658	\$452,965,226	\$24,022,432	5.3%	\$1,871,515,599	\$1,775,812,470	\$95,703,129	5.4%
Fiscal Year Total		\$1,394,527,941	\$2,842,266,680			\$476,987,658	\$969,003,455			\$1,871,515,599	\$3,811,270,135		

\*\* FY 2011 includes 4 days; FY 2012 includes 3 days

### Texas Lottery Commission Fiscal Year Over Year Change in Sales



Note: Week 1 is not a full week of sales as this report is prepared on a Fiscal Year basis.

Texas Lottery Commission  
Instant Tickets by Price Point  
Sales, Prize Expense, Sales Contribution and Payout Percentage With Year Over Year Changes  
Unaudited

Fiscal Year	Price Point	# of Active Games	FY Sales	% of Instant Ticket Sales	Year over Year Change in Sales	FY Prize Expense	Year over Year Change in Prize Expense	FY Sales Contribution	Year over Year Change in Contribution	Average Prize Payout %	Year over Year Change in Payout %
2011	\$1.00	29	99,414,590	7.5%		61,076,491		38,338,099		61.4%	2.2%
thru	\$2.00	28	187,188,426	14.2%		122,702,007		64,486,419		65.5%	0.6%
2/19/2011	\$3.00	18	161,703,764	12.2%		106,079,289		55,624,475		65.6%	0.0%
	\$5.00	39	419,758,705	31.7%		285,640,499		134,118,206		68.0%	0.0%
	\$7.00	7	58,700,299	4.4%		39,905,420		18,794,879		68.0%	0.0%
	\$10.00	13	185,631,280	14.0%		131,525,790		54,105,490		70.9%	1.3%
	\$20.00	5	165,255,680	12.5%		122,614,610		42,641,070		74.2%	1.4%
	\$50.00	2	45,194,500	3.4%		35,091,591		10,102,909		77.6%	4.2%
<b>Total</b>		<b>141</b>	<b>\$1,322,847,244</b>			<b>\$904,635,697</b>		<b>\$418,211,547</b>		<b>68.4%</b>	<b>0.9%</b>
2012	\$1.00	29	105,818,962	7.6%		64,758,148		41,060,814		61.2%	0.7%
thru	\$2.00	29	190,362,726	13.7%		123,764,856		66,597,870		65.0%	-0.8%
2/18/2012	\$3.00	16	170,143,821	12.2%		111,560,308		58,583,513		65.6%	0.0%
	\$5.00	37	444,462,140	31.9%		302,430,821		142,031,319		68.0%	0.2%
	\$7.00	4	18,194,162	1.3%		12,371,913		5,822,249		68.0%	0.0%
	\$10.00	16	221,438,770	15.9%		155,975,700		65,463,070		70.4%	-0.8%
	\$20.00	6	189,690,360	13.6%		141,530,292		48,160,068		74.6%	0.0%
	\$50.00	2	54,417,000	3.9%		42,260,364		12,156,636		77.7%	0.0%
<b>Total</b>		<b>139</b>	<b>\$1,394,527,941</b>			<b>\$954,652,402</b>		<b>\$439,875,539</b>		<b>68.5%</b>	<b>-0.1%</b>
Variance	\$1.00	0	6,404,372		6.4%	3,681,657	6.0%	2,722,715	7.1%	-0.24%	
2012 to	\$2.00	1	3,174,300		1.7%	1,062,849	0.9%	2,111,451	3.3%	-0.53%	
2011	\$3.00	-2	8,440,057		5.2%	5,481,019	5.2%	2,959,038	5.3%	-0.03%	
	\$5.00	-2	24,703,435		5.9%	16,790,323	5.9%	7,913,112	5.9%	0.00%	
	\$7.00	-3	-40,506,137		-69.0%	-27,533,508	-69.0%	-12,972,629	-69.0%	0.02%	
	\$10.00	3	35,807,490		19.3%	24,449,910	18.6%	11,357,580	21.0%	-0.42%	
	\$20.00	1	24,434,680		14.8%	18,915,682	15.4%	5,518,998	12.9%	0.41%	
	\$50.00	0	9,222,500		20.4%	7,168,773	20.4%	2,053,727	20.3%	0.01%	
<b>Total</b>		<b>-2</b>	<b>\$71,680,697</b>		<b>5.4%</b>	<b>\$50,016,705</b>	<b>5.5%</b>	<b>\$21,663,992</b>	<b>5.2%</b>	<b>0.07%</b>	

Notes - Instant Ticket Variances

Texas Lottery Commission  
**Instant Tickets by Price Point**  
**Sales, Prize Expense, Sales Contribution and Payout Percentage With Year Over Year Changes**  
 Unaudited

			FY 2012		FY 2011	Difference
Sales	\$1 - \$7		\$928,981,811		\$926,765,784	\$2,216,027
Prize Exp.	\$1 - \$7		\$614,886,045		\$615,403,706	-\$517,660
Sales Cont.	\$1 - \$7		\$314,095,766		\$311,362,078	\$2,733,687
Prize Exp. %	\$1 - \$7		66.2%		66.4%	-0.2%
			FY 2012		FY 2011	Difference
Sales	\$10 - \$50		\$465,546,130		\$396,081,460	\$69,464,670
Prize Exp.	\$10 - \$50		\$339,766,356		\$289,231,991	\$50,534,365
Sales Cont.	\$10 - \$50		\$125,779,774		\$106,849,469	\$18,930,305
Prize Exp. %	\$10 - \$50		73.0%		73.0%	0.0%
			FY 2012		FY 2011	Difference
Sales	Instant		\$1,394,527,941		\$1,322,847,244	\$71,680,697
Prize Exp.	Instant		\$954,652,402		\$904,635,697	\$50,016,705
Sales Cont.	Instant		\$439,875,539		\$418,211,547	\$21,663,992
Prize Exp. %	Instant		68.5%		68.4%	0.1%

			FY 2012		FY 2011	Difference
Sales	\$1 - \$10		\$1,150,420,581		\$1,112,397,064	\$38,023,517
Prize Exp.	\$1 - \$10		\$770,861,745		\$746,929,495	\$23,932,250
Sales Cont.	\$1 - \$10		\$379,558,836		\$365,467,569	\$14,091,267
Prize Exp. %	\$1 - \$10		67.0%		67.1%	-0.1%
			FY 2012		FY 2011	Difference
Sales	\$20 - \$50		\$244,107,360		\$210,450,180	\$33,657,180
Prize Exp.	\$20 - \$50		\$183,790,656		\$157,706,201	\$26,084,455
Sales Cont.	\$20 - \$50		\$60,316,704		\$52,743,979	\$7,572,725
Prize Exp. %	\$20 - \$50		75.3%		74.9%	0.4%
			FY 2012		FY 2011	Difference
Sales	Instant		\$1,394,527,941		\$1,322,847,244	\$71,680,697
Prize Exp.	Instant		\$954,652,402		\$904,635,697	\$50,016,705
Sales Cont.	Instant		\$439,875,539		\$418,211,547	\$21,663,992
Prize Exp. %	Instant		68.5%		68.4%	0.1%



Texas Lottery Commission  
 Weekly Sales Summary  
 & Comparison to Previous Week  
 Unaudited

	Week Ending 02/18/2012		Week Ending 02/11/2012			
	<u>THIS WEEK</u>	% of Sales	<u>LAST WEEK</u>	% of Sales	<u>\$ change</u>	<u>% change</u>
Total Sales	<u>\$86,268,562</u>		<u>\$103,432,068</u>		<u>-\$17,163,506</u>	-16.59%
Instant Tickets	<u>\$66,679,947</u>	77.3%	<u>\$75,070,485</u>	72.6%	<u>-\$8,390,538</u>	-11.18%
Lotto	\$3,230,364	3.7%	\$3,569,296	3.5%	-\$338,932	-9.50%
Pick 3	\$5,467,216	6.3%	\$5,678,360	5.5%	-\$211,144	-3.72%
Pick 3 Sum It Up	\$114,573	0.1%	\$119,455	0.1%	-\$4,882	-4.09%
Cash Five	\$1,316,645	1.5%	\$1,321,397	1.3%	-\$4,752	-0.36%
Texas Two Step	\$955,165	1.1%	\$983,011	1.0%	-\$27,846	-2.83%
Mega Millions	\$2,625,022	3.0%	\$2,388,865	2.3%	\$236,157	9.89%
Megaplier	\$605,640	0.7%	\$562,554	0.5%	\$43,086	7.66%
Daily 4	\$1,294,454	1.5%	\$1,332,218	1.3%	-\$37,765	-2.83%
Daily 4 Sum It Up	\$95,383	0.1%	\$97,927	0.1%	-\$2,544	-2.60%
Powerball	\$3,310,544	3.8%	\$10,633,290	10.3%	-\$7,322,746	-68.87%
Power Play	\$573,610	0.7%	\$1,675,211	1.6%	-\$1,101,601	-65.76%
Total Online Sales	<u>\$19,588,615</u>		<u>\$28,361,583</u>		<u>-\$8,772,968</u>	-30.93%

\* Totals may not sum due to rounding.

Texas Lottery Commission  
Weekly Sales Summary  
Unaudited

INSTANT TICKETS  
TOP TEN SELLING GAMES

For the Week Ending : 02/18/2012

Rank	Price Point	Game	Sales (Millions)
1	\$ 5	TRIPLE 7'S	\$ 4.790
2	\$ 10	\$200 MILLION CASH SPECTACULAR	\$ 4.513
3	\$ 20	MAXIMUM MILLIONS	\$ 3.276
4	\$ 10	BIG MONEY	\$ 2.926
5	\$ 50	CASINO ACTION	\$ 2.840
6	\$ 20	\$500,000,000 FRENZY	\$ 2.788
7	\$ 3	3 TIMES LUCKY	\$ 2.549
8	\$ 5	CHOCOLATE	\$ 2.486
9	\$ 3	BONUS CASHWORD	\$ 2.162
10	\$ 3	LOTERIA	\$ 1.957

Texas Lottery Commission  
Prize Payout Tracking Report  
Unaudited

Through Week Ending 02/18/2012

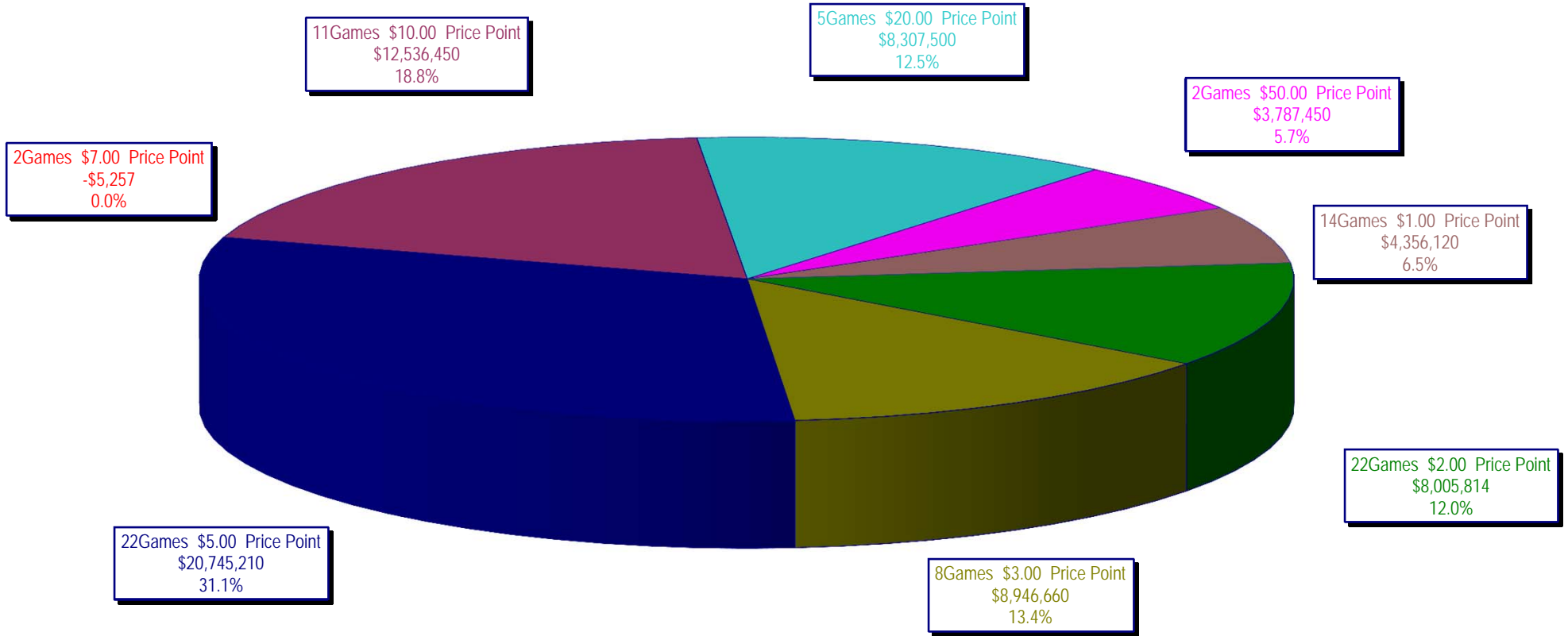
On-Line Sales

		FY Sales Through Week Ending 2/18/2012		FY Prize Expense Through Week Ending 2/18/2012	Actual* Prize Payout	Base Payout (Prize Pool)
Lotto	\$	82,330,062	\$	52,422,963	63.67%	50.00%
Pick 3		125,441,920		57,517,540	45.85%	50.00%
Pick 3 Sum It Up		2,566,288		1,204,338	46.93%	50.00%
Cash Five		30,544,541		15,904,609	52.07%	50.00%
Texas Two Step		30,218,111		15,150,484	50.14%	50.00%
Mega Millions		70,555,228		34,902,548	49.47%	50.00%**
Megaplier		15,657,954		8,180,255	52.24%	N/A
Daily 4		29,680,078		13,275,950	44.73%	50.00%
Daily 4 Sum It Up		2,189,563		873,581	39.90%	50.00%
Powerball		73,743,039		35,570,448	48.24%	50.00%**
Power Play		14,060,876		6,697,477	47.63%	N/A
<b>Totals</b>	\$	<b>476,987,658</b>	\$	<b>241,700,193</b>	<b>50.67%</b>	

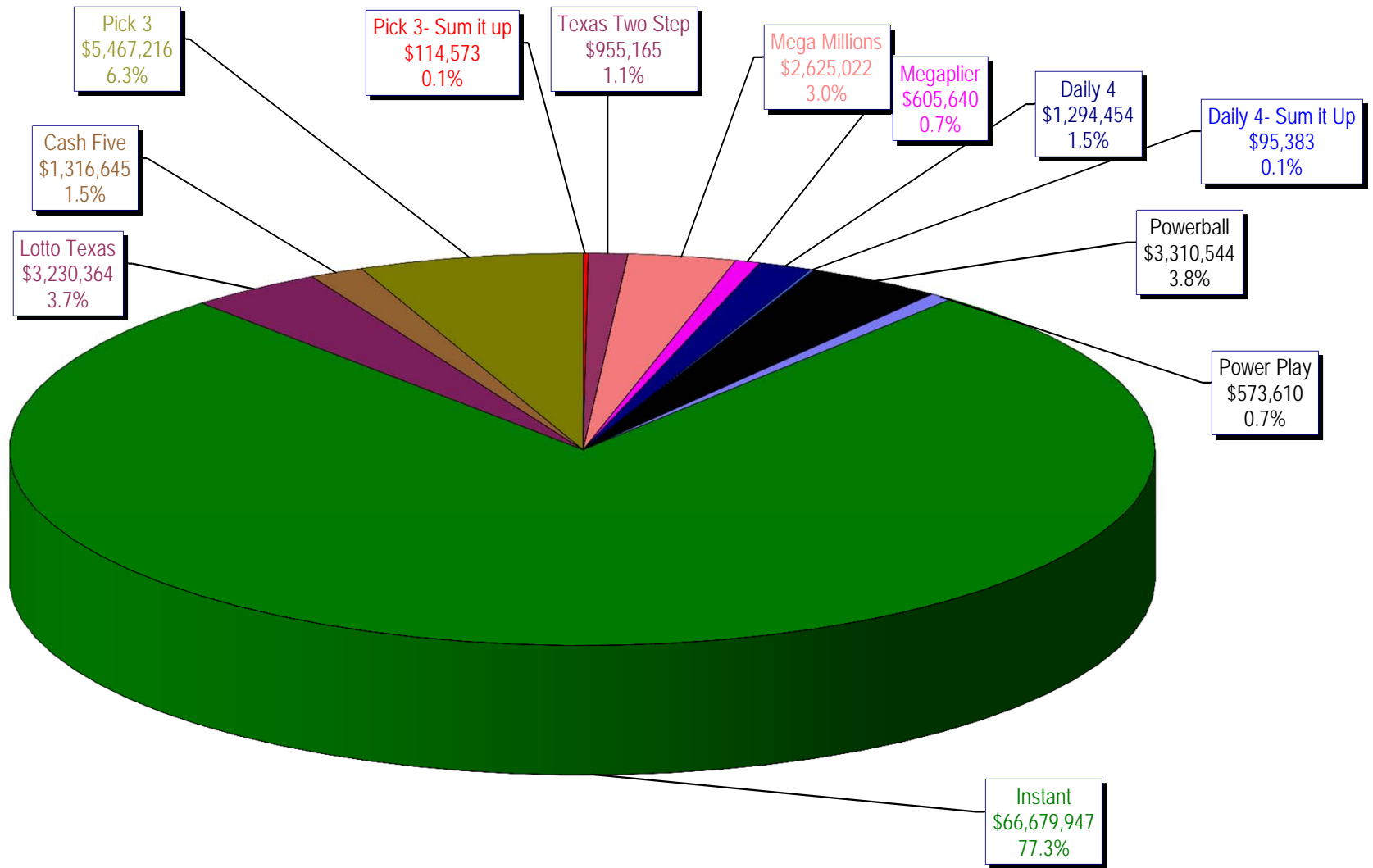
\* Before Unclaimed Prizes

\*\* Estimated; depends on # of guaranteed prizes won in Texas

Texas Lottery Commission  
Instant Ticket Sales  
For the Week Ending 02/18/12  
(Unaudited)



**Texas Lottery Commission**  
**All Game Sales**  
**For the Week Ending 02/18/12**  
**(Unaudited)**



Texas Lottery Commission - Weekly Sales Summary for FY 2012 (Unaudited)

Week Ended	Instant Games	New Games & Dates	Lotto Texas	Jackpot W	Jackpot S	Pick 3	Pick 3 Sum It Up	Cash Five	Texas Two Step	Jackpot M	Jackpot TH	Mega Millions	Jackpot T	Jackpot F	Megaplier	Daily 4	Daily 4 Sum It Up	Powerball	Jackpot W	Jackpot S	Power Play	Total	Per Cap.									
9/3/2011	52,421,985	1340 (\$1,N); 1310 (\$2, N) - 08/29/11	3,710,974	23	24	5,228,940	100,997	1,239,134	989,988	225	300	2,248,664	21	29	539,246	1,221,178	93,318	2,401,555	75	91	530,686	70,726,664	2.81									
9/10/2011	50,591,068	1360 (\$3, N) - 09/05/11	3,329,350	25	4	5,103,026	99,259	1,198,563	935,771	450	200	2,387,766	37	44	557,225	1,180,505	88,443	2,295,315	107	20	506,631	68,272,921	2.71									
9/17/2011	49,835,063	0	3,031,798	5	6	4,953,079	100,990	1,210,562	961,592	225	300	2,801,526	54	65	626,459	1,125,230	83,532	1,560,522	25	20	387,037	66,677,389	2.64									
9/24/2011	49,777,138	1362(\$1, N); 1363(\$5,N); 1364(\$5,N) - 09/19/11	3,083,973	7	8	4,819,453	97,999	1,200,444	1,283,472	450	600	3,206,022	75	86	692,909	1,092,294	82,198	1,561,655	25	30	384,383	67,281,938	2.67									
10/1/2011	51,040,274	1365(\$2,N) - 09/26/11	3,196,730	9	10	4,846,896	97,026	1,215,715	1,146,613	800	200	4,033,330	96	113	830,660	1,096,271	83,993	1,693,809	37	47	412,058	69,693,374	2.76									
10/8/2011	53,715,157	1366(\$1,N) - 10/03/11	3,231,892	11	12	5,064,771	102,919	1,252,733	1,004,251	225	300	2,176,684	12	14	527,777	1,188,636	92,825	2,103,034	58	71	480,159	70,940,837	2.81									
10/15/2011	51,942,121	1367 (\$7, N) - 10/10/11	3,230,925	13	14	4,776,985	99,008	1,214,385	1,337,436	450	625	2,260,036	22	30	542,787	1,132,415	84,772	2,613,215	86	105	563,017	69,797,101	2.77									
10/22/2011	52,837,769	1369 (\$1, N); 1370 (\$5, N) - 10/17/11	3,250,317	15	16	4,784,201	98,306	1,202,768	1,887,302	825	1,050	2,386,255	39	48	561,705	1,130,353	83,722	3,477,867	124	148	695,724	72,396,288	2.87									
10/29/2011	52,206,644	1371 (\$2, N) - 10/24/11	3,302,201	17	18	4,685,786	95,887	1,186,987	2,055,399	1,300	1,550	2,592,752	57	67	596,631	1,107,441	82,921	4,895,300	173	203	903,261	73,711,209	2.92									
11/5/2011	56,265,310	1373 (\$10, N) - 10/31/11	3,570,825	19	20	5,165,835	105,793	1,240,514	910,036	200	200	2,497,308	78	12	583,481	1,222,706	92,619	4,617,172	245	20	863,799	77,135,396	3.06									
11/12/2011	55,682,645	1375 (\$3, N); 1374 (\$1, N) - 11/07/11	3,673,137	21	22	5,298,645	109,575	1,268,630	961,349	225	200	2,362,698	15	22	552,133	1,235,272	92,025	1,861,697	25	35	447,243	73,545,049	2.92									
11/19/2011	54,978,079	1376(\$2, N); 1377 (\$5, N) - 11/14/11	3,575,231	23	24	5,216,095	106,956	1,246,366	1,059,355	225	325	2,300,050	30	40	550,825	1,224,365	89,978	2,033,222	46	60	477,542	72,858,064	2.89									
11/26/2011	53,942,448	1372 (\$5, N) - 11/21/11	3,499,908	25	26	4,943,420	100,352	1,179,174	998,175	500	200	2,377,399	47	55	555,760	1,215,090	90,416	1,527,546	20	25	389,905	70,819,593	2.81									
12/3/2011	57,153,469	0	3,744,456	27	28	5,267,602	108,544	1,264,649	938,225	225	200	2,830,996	64	75	636,924	1,278,857	95,379	1,708,763	31	40	424,242	75,452,105	2.99									
12/10/2011	55,318,284	1378 (\$1, N); 1322 (\$5, N) - 12/5/11; 1389 (\$1, N) - 12/6/11	3,666,072	29	30	5,168,509	106,265	1,243,957	1,030,979	225	325	3,462,326	87	100	736,281	1,235,834	89,131	1,850,570	52	67	443,403	74,351,610	2.95									
12/17/2011	58,612,629	1383 (\$3,N) - 12/12/11	2,963,151	4	5	5,096,413	103,606	1,257,263	1,339,991	475	650	4,412,520	116	135	882,759	1,240,640	89,229	2,163,468	78	91	496,239	78,657,908	3.12									
12/24/2011	60,628,256	1379 (\$1, N); 1317 (\$2, N); 1380 (\$5, N) - 12/19/11	3,265,301	6	7	5,257,800	105,568	1,269,335	943,509	200	225	5,729,832	152	173	1,095,360	1,263,815	88,757	2,933,837	104	125	619,872	83,201,242	3.30									
12/31/2011	63,065,007	0	3,368,593	8	9	5,211,663	107,395	1,275,257	1,200,536	325	450	4,358,985	206	12	878,865	1,244,035	88,079	1,788,226	20	25	426,888	83,013,528	3.29									
1/7/2012	60,479,896	1381 (\$5,N); 1277 (\$50,N) - 1/3/12; 1429 (\$5,N); 1401 (\$10, N) - 1/4/12	3,193,532	10	11	5,246,112	108,060	1,281,653	1,135,472	625	200	2,298,815	15	25	550,191	1,240,736	90,116	1,763,484	30	44	423,718	77,811,784	3.09									
1/14/2012	57,689,526	1382 (\$2,N); 1232 (\$10, N) - 1/9/12	3,259,338	12	13	5,061,130	103,687	1,270,289	1,059,875	225	350	2,542,675	33	42	587,013	1,229,792	87,637	1,921,683	54	66	445,614	75,258,258	2.98									
1/21/2012	58,704,854	1384 (\$1,N) 1385 (\$5,N) - 1/16/12	3,310,397	14	15	5,033,947	104,874	1,252,621	1,422,729	500	650	2,696,266	50	60	594,142	1,204,955	88,136	3,611,989	80	100	566,485	78,591,394	3.12									
1/28/2012	57,611,325	0	3,295,592	16	17	4,996,799	103,779	1,241,568	1,940,577	875	1,100	2,426,609	71	12	544,967	1,197,885	85,833	4,311,550	120	146	496,540	78,253,022	3.10									
2/4/2012	65,553,366	1434 (\$2, N) 1142 (\$20, N) - 01/30/12	3,526,781	18	19	5,493,300	112,992	1,316,899	2,230,312	1,350	1,650	2,212,907	15	23	525,610	1,315,424	96,711	6,186,774	170	200	672,146	89,243,221	3.54									
2/11/2012	75,070,485	1361 (\$5,N) 1362 (\$1, N) 1388 (\$3, N) - 02/06/12	3,569,296	20	21	5,678,360	119,455	1,321,397	983,011	200	225	2,388,865	32	41	562,554	1,332,218	97,927	10,633,290	250	325	1,675,211	103,432,068	4.10									
2/18/2012	66,679,947	1433 (\$10, N) - 02/13/12	3,230,364	22	4	5,467,216	114,573	1,316,645	955,165	200	200	2,625,022	51	61	605,640	1,294,454	95,383	3,310,544	40	50	573,610	86,268,562	3.42									
weekly change	-11.2%		-9.5%			-3.7%		-4.1%				-0.4%			-2.8%			9.9%		7.7%		-2.8%		-2.6%		-68.9%			-65.8%			-16.6%
	<b>SALES</b>		<b>SALES</b>			<b>SALES</b>	<b>SALES</b>	<b>SALES</b>	<b>SALES</b>			<b>SALES</b>	<b>SALES</b>	<b>SALES</b>	<b>SALES</b>	<b>SALES</b>	<b>SALES</b>	<b>SALES</b>	<b>SALES</b>	<b>SALES</b>	<b>SALES</b>	<b>SALES</b>	<b>% of Sales</b>									
Startup to date	43,269,886,143		10,990,336,121			4,252,802,241	25,869,620	2,351,453,202	608,052,578			1,555,986,953			355,793,125	230,682,766	25,159,002	230,134,923			50,324,221	64,154,614,866	100.0%									
Calendar Year to date	441,789,399		23,385,300			36,976,862	767,418	9,001,072	9,727,141			17,191,159			3,970,117	8,815,463	641,741	31,739,314			4,853,324	588,858,308	100.0%									
Fiscal Year to date 2012	1,394,527,941		82,330,062			125,441,920	2,566,288	30,544,541	30,218,111			70,555,228			15,657,954	29,680,078	2,189,563	73,743,039			14,060,876	1,871,515,599	100.0%									