



WEEKLY SALES SUMMARY

Unaudited

Week Ending: 02/21/2009

Texas Lottery Commission
Fiscal Year to Date Sales Comparison
Unaudited

Through the week ending 02/21/2009 (25 weeks)

Sales by Game	FY 2007 *	FY 2008 **	FY 2009	\$ Change		% Change	
				FY 2009 to FY 2007	FY 2009 to FY 2008	FY 2009 to FY 2007	FY 2009 to FY 2008
Instant	\$ 1,367,728,551	\$ 1,363,918,072	\$ 1,322,520,419	\$ -45,208,132	\$ -41,397,653	-3.3%	-3.0%
Lotto Texas	107,249,318	103,835,903	89,420,320	-17,828,998	-14,415,583	-16.6%	-13.9%
Pick 3	151,731,642	138,072,303	136,123,591	-15,608,051	-1,948,712	-10.3%	-1.4%
Pick 3 Sum It Up	-	2,789,871	2,879,691	2,879,691	89,820	-	3.2%
Cash 5	42,498,917	37,235,273	34,163,427	-8,335,490	-3,071,846	-19.6%	-8.2%
Texas Two Step	25,886,099	20,652,765	22,412,727	-3,473,372	1,759,962	-13.4%	8.5%
Mega Millions	76,061,641	84,002,515	83,639,891	7,578,250	-362,625	10.0%	-0.4%
Megaplier	18,328,412	19,718,177	19,732,424	1,404,012	14,247	7.7%	0.1%
Daily 4	-	20,219,348	20,910,096	20,910,096	690,748	-	3.4%
Daily 4 Sum It Up	-	4,921,987	2,625,606	2,625,606	-2,296,381	-	-46.7%
Total	\$ 1,789,484,580	\$ 1,795,366,214	\$ 1,734,428,191	\$ -55,056,389	\$ -60,938,023	-3.1%	-3.4%

* 3 extra days in 2007 ** 2 extra days in 2008

Texas Lottery Commission
Fiscal Year Over Year Change in Sales
Unaudited
FY 2009 Compared to FY 2008

Week	FY 2009 Week Ending	INSTANT TICKETS				ON-LINE GAMES				TOTAL SALES			
		FY 2009	FY 2008	Difference	% change - Cumulative Sales	FY 2009	FY 2008	Difference	% change - Cumulative Sales	FY 2009	FY 2008	Difference	% change - Cumulative Sales
1	9/6/2008**	\$44,890,104	\$62,376,229	(\$17,486,125)	-28.0%	\$14,722,011	\$19,372,224	(\$4,650,213)	-24.0%	\$59,612,115	\$81,748,453	(\$22,136,338)	-27.1%
2	9/13/2008	\$46,309,551	\$52,458,866	(\$6,149,315)	-20.6%	\$13,704,860	\$16,926,163	(\$3,221,303)	-21.7%	\$60,014,411	\$69,385,029	(\$9,370,618)	-20.8%
3	9/20/2008	\$42,923,171	\$49,998,934	(\$7,075,763)	-18.6%	\$12,291,263	\$15,792,283	(\$3,501,020)	-21.8%	\$55,214,434	\$65,791,217	(\$10,576,783)	-19.4%
4	9/27/2008	\$47,042,801	\$49,894,175	(\$2,851,374)	-15.6%	\$14,222,339	\$14,800,514	(\$578,175)	-17.9%	\$61,265,140	\$64,694,689	(\$3,429,549)	-16.2%
5	10/4/2008	\$50,747,162	\$53,486,863	(\$2,739,701)	-13.5%	\$15,784,472	\$16,618,430	(\$833,958)	-15.3%	\$66,531,634	\$70,105,293	(\$3,573,659)	-14.0%
6	10/11/2008	\$49,763,789	\$50,918,020	(\$1,154,231)	-11.7%	\$15,622,498	\$15,601,410	\$21,088	-12.9%	\$65,386,287	\$66,519,430	(\$1,133,143)	-12.0%
7	10/18/2008	\$49,299,053	\$50,532,253	(\$1,233,200)	-10.5%	\$15,167,940	\$15,682,666	(\$514,726)	-11.6%	\$64,466,993	\$66,214,919	(\$1,747,926)	-10.7%
8	10/25/2008	\$49,977,581	\$50,347,450	(\$369,869)	-9.3%	\$14,525,843	\$15,586,516	(\$1,060,673)	-11.0%	\$64,503,424	\$65,933,966	(\$1,430,542)	-9.7%
9	11/1/2008	\$50,346,542	\$53,953,733	(\$3,607,191)	-9.0%	\$14,838,845	\$16,775,983	(\$1,937,139)	-11.1%	\$65,185,387	\$70,729,716	(\$5,544,330)	-9.5%
10	11/8/2008	\$54,860,087	\$53,635,090	\$1,224,997	-7.9%	\$16,057,069	\$15,912,791	\$144,278	-9.9%	\$70,917,156	\$69,547,881	\$1,369,275	-8.3%
11	11/15/2008	\$53,484,812	\$51,254,401	\$2,230,411	-6.8%	\$15,829,819	\$15,797,076	\$32,744	-9.0%	\$69,314,631	\$67,051,477	\$2,263,155	-7.3%
12	11/22/2008	\$52,806,511	\$50,897,817	\$1,908,694	-5.9%	\$16,460,748	\$15,801,720	\$659,028	-7.9%	\$69,267,259	\$66,699,537	\$2,567,722	-6.4%
13	11/29/2008	\$52,199,741	\$53,913,115	(\$1,713,374)	-5.7%	\$17,397,576	\$17,055,505	\$342,072	-7.1%	\$69,597,317	\$70,968,620	(\$1,371,303)	-6.0%
14	12/6/2008	\$56,731,851	\$55,702,697	\$1,029,154	-5.1%	\$20,363,789	\$17,900,717	\$2,463,073	-5.5%	\$77,095,640	\$73,603,414	\$3,492,227	-5.2%
15	12/13/2008	\$54,109,617	\$53,703,516	\$406,101	-4.7%	\$22,952,228	\$17,820,841	\$5,131,387	-3.0%	\$77,061,845	\$71,524,357	\$5,537,488	-4.3%
16	12/20/2008	\$55,777,328	\$57,592,769	(\$1,815,441)	-4.6%	\$15,833,517	\$17,436,233	(\$1,602,716)	-3.4%	\$71,610,845	\$75,029,002	(\$3,418,157)	-4.3%
17	12/27/2008	\$57,597,885	\$57,696,003	(\$98,118)	-4.3%	\$15,851,771	\$14,743,680	\$1,108,091	-2.9%	\$73,449,656	\$72,439,683	\$1,009,973	-4.0%
18	1/3/2009	\$57,582,115	\$57,935,952	(\$353,837)	-4.1%	\$16,900,028	\$15,704,450	\$1,195,578	-2.3%	\$74,482,143	\$73,640,402	\$841,741	-3.7%
19	1/10/2009	\$54,250,945	\$55,360,542	(\$1,109,597)	-4.0%	\$16,203,220	\$15,691,540	\$511,680	-2.0%	\$70,454,165	\$71,052,082	(\$597,917)	-3.5%
20	1/17/2009	\$51,625,339	\$54,920,166	(\$3,294,827)	-4.1%	\$15,701,605	\$16,259,669	(\$558,064)	-2.1%	\$67,326,944	\$71,179,835	(\$3,852,891)	-3.6%
21	1/24/2009	\$52,789,573	\$54,439,890	(\$1,650,317)	-4.1%	\$15,897,473	\$16,691,724	(\$794,251)	-2.2%	\$68,687,046	\$71,131,614	(\$2,444,568)	-3.6%
22	1/31/2009	\$55,453,471	\$57,464,382	(\$2,010,911)	-4.0%	\$16,908,272	\$17,968,227	(\$1,059,955)	-2.4%	\$72,361,743	\$75,432,609	(\$3,070,866)	-3.7%
23	2/7/2009	\$62,247,711	\$60,715,019	\$1,532,692	-3.7%	\$18,354,314	\$20,097,338	(\$1,743,025)	-2.7%	\$80,602,025	\$80,812,357	(\$210,333)	-3.5%
24	2/14/2009	\$60,509,056	\$57,093,143	\$3,415,913	-3.3%	\$19,218,078	\$22,179,908	(\$2,961,831)	-3.3%	\$79,727,134	\$79,273,051	\$454,083	-3.3%
25	2/21/2009	\$59,194,623	\$57,627,047	\$1,567,576	-3.0%	\$21,098,199	\$27,230,539	(\$6,132,340)	-4.5%	\$80,292,822	\$84,857,586	(\$4,564,764)	-3.4%
26	2/28/2009		\$55,591,667				\$17,016,118				\$72,607,785		
27	3/7/2009		\$56,837,481				\$16,690,193				\$73,527,674		
28	3/14/2009		\$54,587,112				\$16,448,165				\$71,035,277		
29	3/21/2009		\$53,098,937				\$16,639,184				\$69,738,121		
30	3/28/2009		\$53,933,689				\$17,698,625				\$71,632,314		
31	4/4/2009		\$57,598,982				\$17,665,411				\$75,264,393		
32	4/11/2009		\$53,954,185				\$15,860,784				\$69,814,969		
33	4/18/2009		\$53,946,736				\$16,452,676				\$70,399,412		
34	4/25/2009		\$51,533,006				\$16,873,949				\$68,406,955		
35	5/2/2009		\$53,250,568				\$18,202,103				\$71,452,671		
36	5/9/2009		\$54,060,849				\$18,422,562				\$72,483,411		
37	5/16/2009		\$54,010,641				\$20,728,360				\$74,739,001		
38	5/23/2009		\$50,377,032				\$15,461,384				\$65,838,416		
39	5/30/2009		\$49,545,080				\$15,175,370				\$64,720,450		
40	6/6/2009		\$53,702,986				\$15,982,166				\$69,685,152		

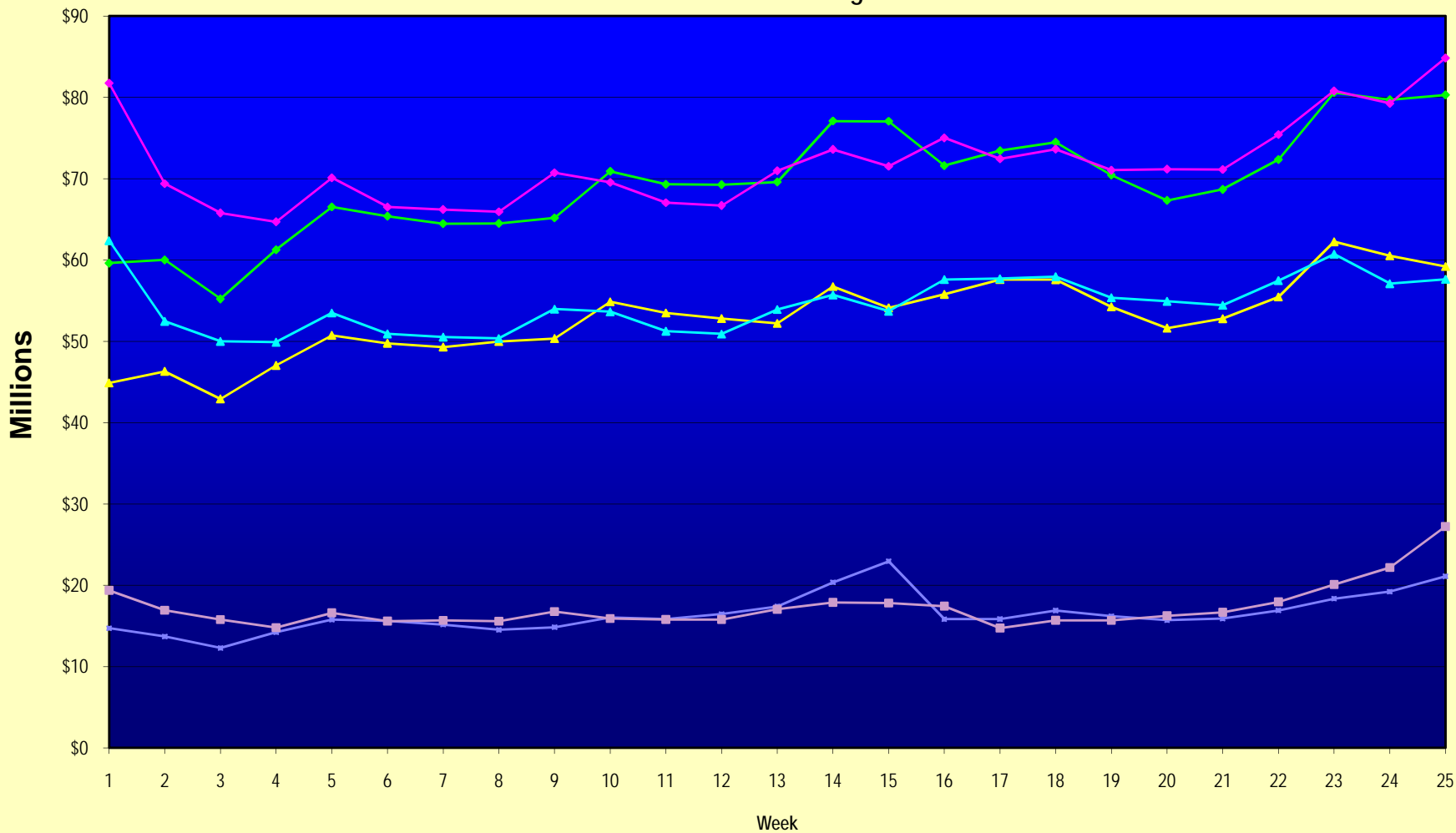
Note: Week 1 is not a full week of sales as this report is prepared on a Fiscal Year basis.

Texas Lottery Commission
Fiscal Year Over Year Change in Sales
Unaudited
FY 2009 Compared to FY 2008

Week	FY 2009 Week Ending	INSTANT TICKETS				ON-LINE GAMES				TOTAL SALES			
		FY 2009	FY 2008	Difference	% change - Cumulative Sales	FY 2009	FY 2008	Difference	% change - Cumulative Sales	FY 2009	FY 2008	Difference	% change - Cumulative Sales
41	6/13/2009		\$51,171,483				\$16,589,087				\$67,760,570		
42	6/20/2009		\$50,650,362				\$15,728,484				\$66,378,846		
43	6/27/2009		\$49,258,266				\$15,250,905				\$64,509,171		
44	7/4/2009		\$53,393,355				\$16,270,619				\$69,663,974		
45	7/11/2009		\$53,127,756				\$16,914,922				\$70,042,678		
46	7/18/2009		\$51,593,146				\$17,752,738				\$69,345,884		
47	7/25/2009		\$49,902,181				\$16,706,145				\$66,608,326		
48	8/1/2009		\$49,605,420				\$16,254,383				\$65,859,803		
49	8/8/2009		\$50,961,907				\$16,770,496				\$67,732,403		
50	8/15/2009		\$49,452,511				\$16,749,487				\$66,201,998		
51	8/22/2009		\$49,249,518				\$17,286,302				\$66,535,820		
52	8/29/2009		\$49,468,928				\$18,109,997				\$67,578,925		
53	9/5/2009		\$6,054,239				\$493,109				\$6,547,348		
Total thru Current Week		\$1,322,520,419	\$1,363,918,072	(\$41,397,653)	-3.0%	\$411,907,772	\$431,448,142	(\$19,540,370)	-4.5%	\$1,734,428,191	\$1,795,366,214	(\$60,938,023)	-3.4%
Fiscal Year Total		\$1,322,520,419	\$2,783,836,095			\$411,907,772	\$887,641,858			\$1,734,428,191	\$3,671,477,953		

** FY 2009 includes 6 days; FY 2008 includes 8 days
FY 2009 average daily sales are \$9,242,258. Two days at average daily sales are \$18,484,516.

Texas Lottery Commission Fiscal Year Over Year Change in Sales



◆ Total Sales 2009
 ◆ Total Sales 2008
 ▲ Instant Tickets 2009
 ▲ Instant Tickets 2008
 ■ On-Line Games 2009
 ■ On-Line Games 2008

Note: Week 1 is not a full week of sales as this report is prepared on a Fiscal Year basis.

Texas Lottery Commission
Instant Tickets by Price Point
Sales, Prize Expense, Sales Contribution and Payout Percentage With Year Over Year Changes
Unaudited

Fiscal Year	Price Point	# of Active Games	FY Sales	% of Instant Ticket Sales	Year over Year Change in Sales	FY Prize Expense	Year over Year Change in Prize Expense	FY Sales Contribution	Year over Year Change in Contribution	Average Prize Payout %	Year over Year Change in Payout %
2008	\$1.00	40	117,020,686	8.6%		70,298,389		46,722,297		60.1%	0.0%
thru	\$2.00	46	224,782,592	16.5%		146,477,262		78,305,330		65.2%	0.5%
2/23/2008	\$3.00	13	110,735,031	8.1%		72,831,988		37,903,043		65.8%	-0.1%
	\$5.00	39	377,665,885	27.7%		255,726,527		121,939,358		67.7%	-0.4%
	\$7.00	11	89,838,637	6.6%		61,094,558		28,744,079		68.0%	0.1%
	\$10.00	17	207,568,426	15.2%		144,256,484		63,311,942		69.5%	-1.4%
	\$20.00	7	82,180,820	6.0%		59,094,525		23,086,295		71.9%	-0.1%
	\$25.00	2	42,712,075	3.1%		31,011,292		11,700,783		72.6%	0.3%
	\$30.00	3	29,074,020	2.1%		21,041,849		8,032,171		72.4%	0.1%
	\$50.00	2	82,339,900	6.0%		59,402,385		22,937,515		72.1%	0.0%
Total		180	\$1,363,918,072			\$921,235,260		\$442,682,812		67.5%	
2009	\$1.00	38	117,277,908	8.9%		70,542,504		46,735,404		60.1%	0.1%
thru	\$2.00	34	229,148,495	17.3%		149,371,726		79,776,769		65.2%	-0.1%
2/21/2009	\$3.00	14	139,993,776	10.6%		92,020,855		47,972,921		65.7%	0.0%
	\$5.00	38	408,102,334	30.9%		277,554,289		130,548,045		68.0%	0.1%
	\$7.00	7	61,762,631	4.7%		42,003,491		19,759,140		68.0%	0.0%
	\$10.00	15	178,676,570	13.5%		125,034,398		53,642,172		70.0%	0.0%
	\$20.00	8	123,264,140	9.3%		88,457,290		34,806,850		71.8%	0.0%
	\$25.00	1	2,373,725	0.2%		1,726,525		647,200		72.7%	0.2%
	\$30.00	3	9,990,990	0.8%		7,239,839		2,751,151		72.5%	0.1%
	\$50.00	3	51,929,850	3.9%		37,536,972		14,392,878		72.3%	0.2%
Total		161	\$1,322,520,419			\$891,487,891		\$431,032,528		67.4%	-0.4%
Variance	\$1.00	-2	257,222		0.2%	244,115	0.3%	13,107	0.0%	0.08%	
2009 to	\$2.00	-12	4,365,903		1.9%	2,894,464	2.0%	1,471,439	1.9%	0.02%	
2008	\$3.00	1	29,258,745		26.4%	19,188,867	26.3%	10,069,878	26.6%	-0.04%	
	\$5.00	-1	30,436,449		8.1%	21,827,762	8.5%	8,608,687	7.1%	0.30%	
	\$7.00	-4	-28,076,006		-31.3%	-19,091,067	-31.2%	-8,984,940	-31.3%	0.00%	
	\$10.00	-2	-28,891,856		-13.9%	-19,222,086	-13.3%	-9,669,770	-15.3%	0.48%	
	\$20.00	1	41,083,320		50.0%	29,362,765	49.7%	11,720,555	50.8%	-0.15%	
	\$25.00	-1	-40,338,350		-94.4%	-29,284,767	-94.4%	-11,053,583	-94.5%	0.13%	
	\$30.00	0	-19,083,030		-65.6%	-13,802,010	-65.6%	-5,281,020	-65.7%	0.09%	
	\$50.00	1	-30,410,050		-36.9%	-21,865,413	-36.8%	-8,544,637	-37.3%	0.14%	
Total		-19	-\$41,397,653		-3.0%	-\$29,747,370	-3.2%	-\$11,650,283	-2.6%	-0.14%	

Texas Lottery Commission
Instant Tickets by Price Point
Sales, Prize Expense, Sales Contribution and Payout Percentage With Year Over Year Changes
Unaudited

Notes - Instant Ticket Variances

		FY 2009		FY 2008		Difference
Sales	\$1 - \$7		\$956,285,144		\$920,042,831	\$36,242,313
Prize Exp.	\$1 - \$7		\$631,492,866		\$606,428,724	\$25,064,142
Sales Cont.	\$1 - \$7		\$324,792,278		\$313,614,107	\$11,178,171
Prize Exp. %	\$1 - \$7		66.0%		65.9%	0.1%
		FY 2009		FY 2008		Difference
Sales	\$10 - \$50		\$366,235,275		\$443,875,241	-\$77,639,966
Prize Exp.	\$10 - \$50		\$259,995,025		\$314,806,536	-\$54,811,511
Sales Cont.	\$10 - \$50		\$106,240,250		\$129,068,705	-\$22,828,455
Prize Exp. %	\$10 - \$50		71.0%		70.9%	0.1%
		FY 2009		FY 2008		Difference
Sales	Instant		\$1,322,520,419		\$1,363,918,072	-\$41,397,653
Prize Exp.	Instant		\$891,487,891		\$921,235,260	-\$29,747,370
Sales Cont.	Instant		\$431,032,528		\$442,682,812	-\$11,650,283
Prize Exp. %	Instant		67.4%		67.5%	-0.1%

		FY 2009		FY 2008		Difference
Sales	\$1 - \$10		\$1,134,961,714		\$1,127,611,257	\$7,350,457
Prize Exp.	\$1 - \$10		\$756,527,264		\$750,685,209	\$5,842,055
Sales Cont.	\$1 - \$10		\$378,434,450		\$376,926,048	\$1,508,402
Prize Exp. %	\$1 - \$10		66.7%		66.6%	0.1%
		FY 2009		FY 2008		Difference
Sales	\$20 - \$50		\$187,558,705		\$236,306,815	-\$48,748,110
Prize Exp.	\$20 - \$50		\$134,960,627		\$170,550,052	-\$35,589,425
Sales Cont.	\$20 - \$50		\$52,598,078		\$65,756,763	-\$13,158,685
Prize Exp. %	\$20 - \$50		72.0%		72.2%	-0.2%
		FY 2009		FY 2008		Difference
Sales	Instant		\$1,322,520,419		\$1,363,918,072	-\$41,397,653
Prize Exp.	Instant		\$891,487,891		\$921,235,260	-\$29,747,370
Sales Cont.	Instant		\$431,032,528		\$442,682,812	-\$11,650,283
Prize Exp. %	Instant		67.4%		67.5%	-0.1%

Texas Lottery Commission
 Weekly Sales Summary
 & Comparison to Previous Week
 Unaudited

	Week Ending 02/21/2009		Week Ending 02/14/2009			
	<u>THIS WEEK</u>	% of Sales	<u>LAST WEEK</u>	% of Sales	<u>\$ change</u>	<u>% change</u>
Total Sales	<u>\$80,292,822</u>		<u>\$79,727,134</u>		<u>\$565,689</u>	0.71%
Instant Tickets	<u>\$59,194,623</u>	73.7%	<u>\$60,509,056</u>	75.9%	<u>-\$1,314,433</u>	-2.17%
Lotto Texas	\$4,326,401	5.4%	\$4,119,193	5.2%	\$207,208	5.03%
Pick 3	\$6,038,808	7.5%	\$6,363,028	8.0%	-\$324,221	-5.10%
Pick 3 Sum It Up	\$128,493	0.2%	\$133,902	0.2%	-\$5,409	-4.04%
Cash 5	\$1,439,312	1.8%	\$1,445,616	1.8%	-\$6,304	-0.44%
Texas Two Step	\$1,268,803	1.6%	\$1,013,987	1.3%	\$254,816	25.13%
Mega Millions	\$5,614,471	7.0%	\$4,082,572	5.1%	\$1,531,899	37.52%
Megaplier	\$1,178,133	1.5%	\$928,813	1.2%	\$249,320	26.84%
Daily 4	\$988,075	1.2%	\$1,010,899	1.3%	-\$22,824	-2.26%
Daily 4 Sum It Up	\$115,704	0.1%	\$120,069	0.2%	-\$4,365	-3.64%
Total Online Sales	<u>\$21,098,199</u>		<u>\$19,218,078</u>		<u>\$1,880,122</u>	9.78%

* Totals may not sum due to rounding.

Texas Lottery Commission
Weekly Sales Summary
Unaudited

INSTANT TICKETS
TOP TEN SELLING GAMES

For the Week Ending : 02/21/2009

Rank	Price Point	Game	Sales (Millions)
1	\$ 10	20 TIMES THE MONEY	\$ 4.014
2	\$ 7	DAZZLIN' DIAMOND 7'S	\$ 3.625
3	\$ 5	BUST THE BANK	\$ 3.309
4	\$ 5	POT O'GOLD	\$ 2.924
5	\$ 20	SUPER SET FOR LIFE	\$ 2.703
6	\$ 3	BONUS CASHWORD	\$ 2.672
7	\$ 5	WELCOME TO FABULOUS LAS VEGAS	\$ 2.210
8	\$ 10	SET FOR LIFE	\$ 2.080
9	\$ 5	HOT HAND	\$ 1.927
10	\$ 50	\$130,000,000 PLATINUM PAYOUT	\$ 1.807

Texas Lottery Commission
Prize Payout Tracking Report
Unaudited

Through Week Ending 02/21/2009

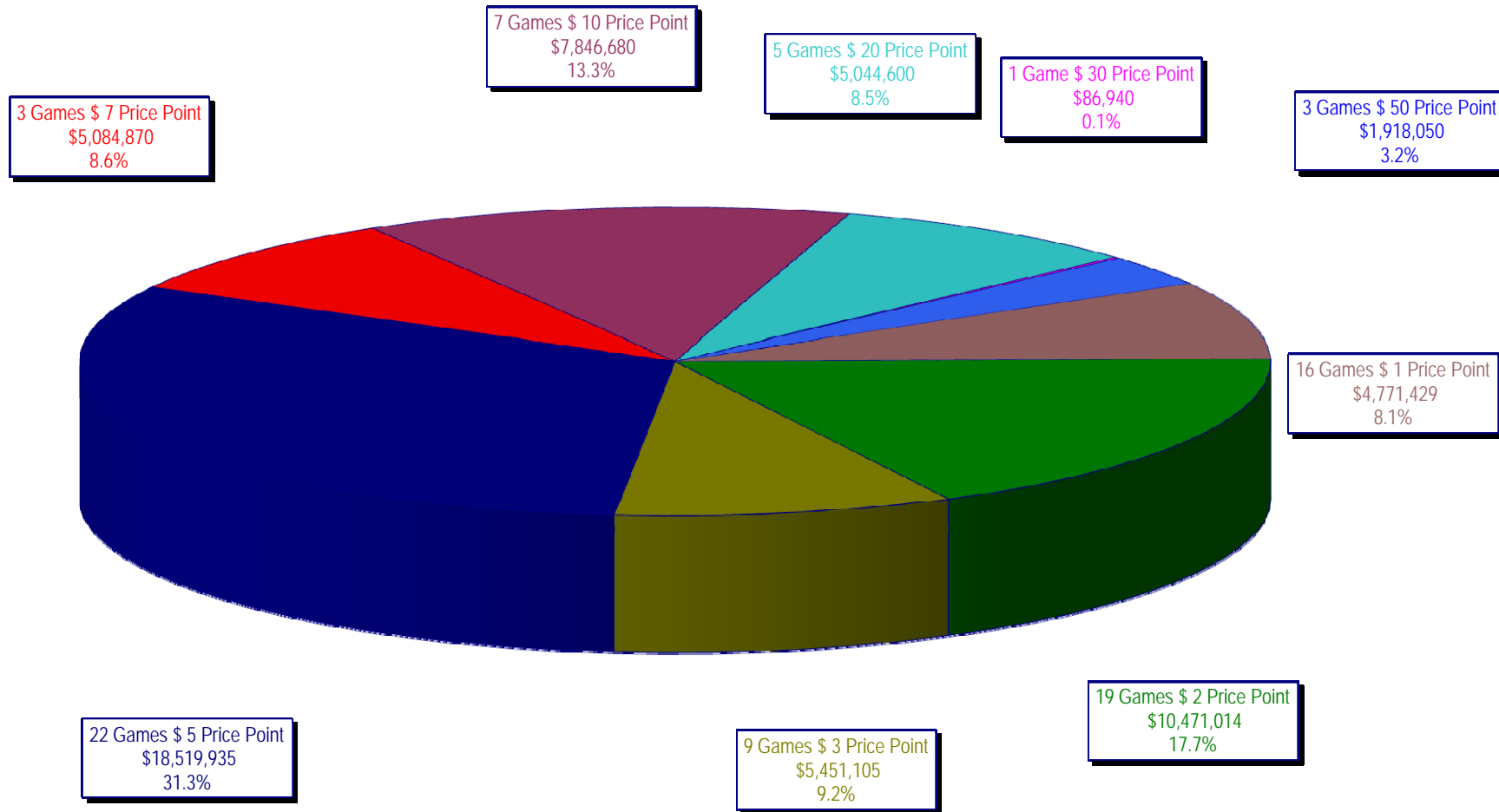
On-Line Sales

		FY Sales Through Week Ending 2/21/2009		FY Prize Expense Through Week Ending 2/21/2009	Actual* Prize Payout	Base Payout (Prize Pool)
Lotto	\$	89,420,320	\$	44,810,874	50.11%	50.00%
Pick 3		136,123,591		69,036,440	50.72%	50.00%
Pick 3 Sum It Up		2,879,691		1,282,495	44.54%	50.00%
Cash 5		34,163,427		17,183,635	50.30%	50.00%
Texas Two-Step		22,412,727		12,362,127	55.16%	50.00%
Mega Millions		83,639,891		40,876,430	48.87%	50.00%**
Megaplier		19,732,424		8,359,067	42.36%	N/A
Daily 4		20,910,096		9,784,625	46.79%	50.00%
Daily 4-Sum It Up		2,625,606		1,140,452	43.44%	50.00%
Totals	\$	411,907,772	\$	204,836,145	49.73%	

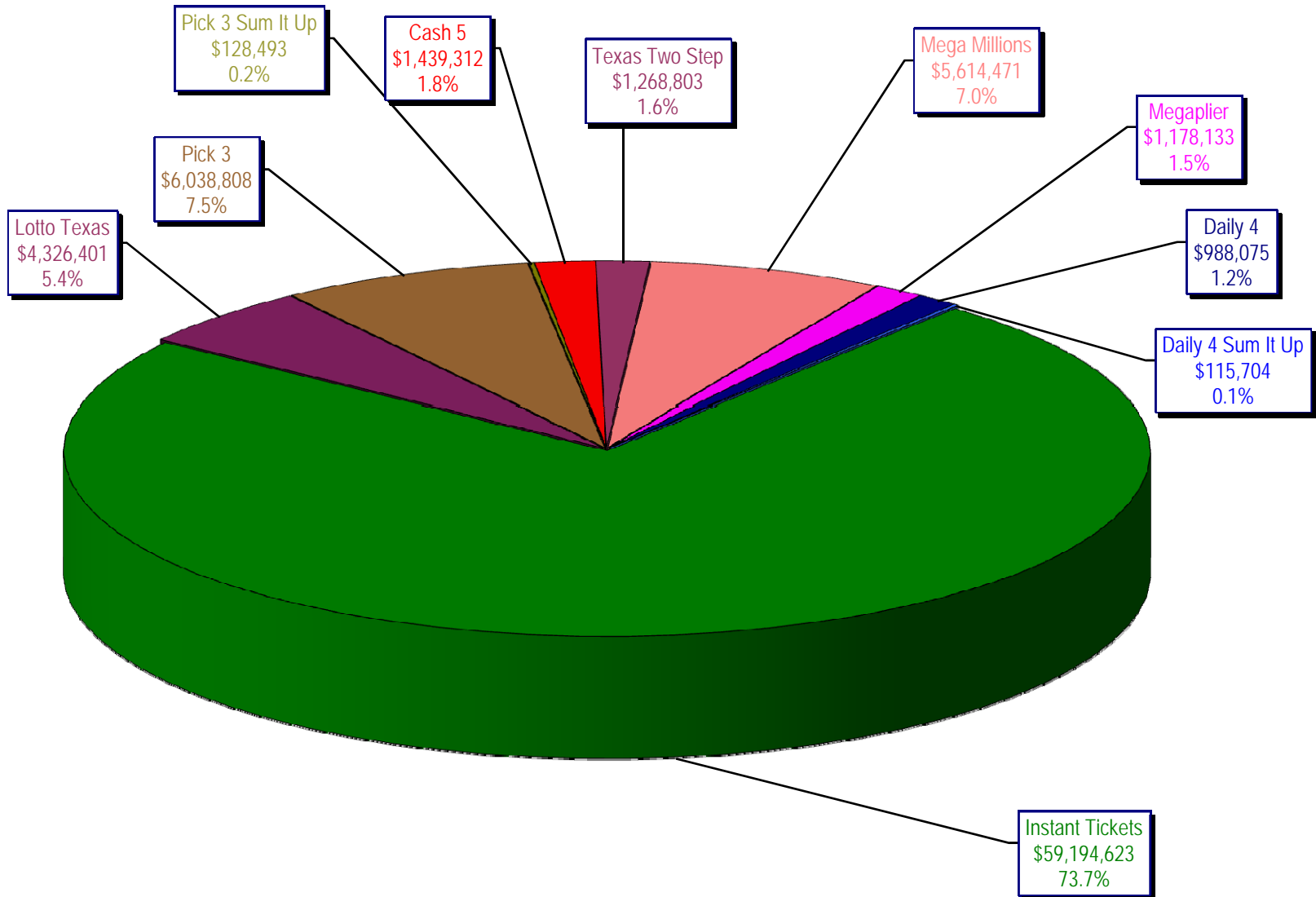
* Before Unclaimed Prizes

** Estimated; depends on # of guaranteed prizes won in Texas

Texas Lottery Commission
Instant Ticket Sales
For the Week Ending 02/21/2009
(Unaudited)



Texas Lottery Commission
All Game Sales
For the Week Ending 02/21/2009
(Unaudited)



Texas Lottery Commission - Weekly Sales Summary for FY 2009 (Unaudited)

Week Ended	Instant Games	New Games & Dates	Lotto Texas	Jackpot		Pick 3	Pick 3 Sum It Up	Cash 5	Texas Two Step	Jackpot		Mega Millions	Jackpot		Megaplier	Daily 4	Daily 4 Sum It Up	Total	Per Cap.
				W	S					M/T	TH/F		T	F					
9/6/2008	50,944,343.00	1108 (\$2,N), 1088 (\$3, N) - 9/01/08	3,378,718.00	5	6	5,436,414.00	122,123.00	1,396,622.00	890,346.00	350	450	2,445,490.00	12	16	649,090.00	786,482.50	109,834.00	66,159,462.50	2.77
9/13/2008	46,309,551.00	1109 (\$1,N), 1098 (\$5, N) - 9/08/08	3,020,089.00	7	8	4,705,585.50	105,899.00	1,279,412.00	856,199.00	600	200	2,327,214.00	24	12	617,672.00	696,633.00	96,156.50	60,014,411.00	2.51
9/20/2008	42,923,171.00	0	3,054,093.00	9	10	4,121,734.50	90,718.00	1,155,350.00	637,792.00	225	250	1,978,127.00	15	12	540,225.00	627,210.00	86,013.50	55,214,434.00	2.31
9/27/2008	47,042,801.00	1111 (\$2,N), 1099 (\$5, N) - 9/22/08	3,427,671.00	11	12	4,821,563.00	103,189.50	1,288,062.00	834,307.00	275	425	2,322,862.00	16	24	617,085.00	709,741.50	97,858.00	61,265,140.00	2.56
10/4/2008	50,747,162.00	1113 (\$1,N) 9/29/08	3,675,683.00	13	14	5,305,711.00	116,332.50	1,369,040.00	1,074,874.00	525	650	2,671,927.00	32	42	693,845.00	770,782.50	106,277.00	66,531,634.00	2.78
10/11/2008	49,763,789.00	0	3,732,365.00	15	16	5,287,094.00	114,665.50	1,370,334.00	1,305,250.00	800	975	2,306,070.00	12	16	622,120.00	778,204.00	106,395.00	65,386,286.50	2.74
10/18/2008	49,299,053.00	1117 (\$3,N), 1118 (\$20,N) - 10/13/08	3,780,438.00	17	18	5,149,258.00	109,530.00	1,355,601.00	741,849.00	200	200	2,500,644.00	23	32	652,198.00	776,366.00	102,056.00	64,466,993.00	2.70
10/25/2008	49,977,581.00	1119 (\$1,N), 1120 (\$5,N) - 10/20/08	3,210,762.00	4	5	5,099,671.00	107,104.50	1,339,079.00	789,649.00	225	275	2,456,965.00	42	12	641,206.00	778,434.00	102,972.50	64,503,424.00	2.70
11/1/2008	50,346,542.00	1121 (\$2,N), 1122 (\$10,N) - 10/27/08	3,325,641.00	6	7	5,234,124.00	109,983.00	1,339,046.00	946,035.00	375	475	2,347,596.00	16	23	626,235.00	805,572.00	104,612.50	65,185,386.50	2.73
11/8/2008	54,860,087.00	1123 (\$3,N), 1124 (\$7,N) - 11/03/08; 1103 (\$3,N) - 11/05/08; 1063 (\$3,N) - 11/07/08	3,290,417.00	4	5	5,686,701.00	118,495.00	1,397,985.00	1,158,101.00	625	750	2,729,302.50	31	42	692,662.00	871,230.00	112,175.50	70,917,156.00	2.97
11/15/2008	53,484,812.00	1125 (\$1, N), 1126 (\$5,N) - 11/10/08	3,336,934.00	6	7	5,459,984.00	112,884.00	1,366,024.00	766,955.00	200	225	3,102,251.00	51	62	749,736.00	830,957.00	104,094.00	69,314,631.00	2.90
11/22/2008	52,806,511.00	0	3,452,481.00	8	9	5,329,591.00	108,861.50	1,358,271.00	743,950.00	200	200	3,666,517.00	73	86	847,201.00	849,077.50	104,797.50	69,267,258.50	2.90
11/29/2008	52,199,741.00	1127 (\$2,N), 1128 (\$5,N) - 11/24/08	3,585,374.00	10	11	5,340,783.50	111,443.00	1,315,233.00	686,077.00	200	225	4,441,715.00	96	111	968,906.00	845,475.50	102,569.00	69,597,317.00	2.91
12/6/2008	56,731,851.00	0	3,794,991.00	12	13	5,752,593.00	121,663.50	1,416,446.00	780,328.00	250	200	6,238,355.00	128	146	1,270,214.00	881,841.50	107,357.00	77,095,640.00	3.23
12/13/2008	54,109,617.00	1129 (\$1, N) - 12/08/08	3,315,658.00	4	5	5,580,770.00	114,295.50	1,384,858.00	766,893.00	225	250	9,150,536.00	170	207	1,691,121.00	846,176.50	101,919.50	77,061,844.50	3.22
12/20/2008	55,777,328.00	1104 (\$2,N), 1105 (\$5,N), 1106 (\$10,N) - 12/15/08	3,432,340.00	6	7	5,741,120.00	116,075.50	1,401,805.00	741,945.00	200	200	2,736,234.00	12	16	687,875.00	871,579.50	104,543.00	71,610,845.00	3.00
12/27/2008	57,597,885.00	1077 (\$1,N), 1110 (\$1,N) - 12/22/08	3,582,169.00	8	4	5,628,081.50	115,323.00	1,340,590.00	708,906.00	225	250	2,842,167.00	22	29	706,042.00	828,346.00	100,146.00	73,449,655.50	3.07
1/3/2009	57,582,115.00	0	3,784,763.00	5	6	5,690,220.50	120,519.50	1,406,807.00	934,000.00	325	525	3,190,457.00	37	46	780,850.00	885,674.00	106,736.50	74,482,142.50	3.12
1/10/2009	54,250,945.00	1135 (\$2,N), 1136 (\$5,N) - 1/5/09	3,582,400.00	7	8	5,476,890.00	116,674.50	1,403,531.00	1,267,847.00	675	900	2,701,275.00	12	16	681,574.00	868,919.00	104,109.50	70,454,165.00	2.95
1/17/2009	51,625,339.00	1137 (\$1,N), 1138 (\$3,N) - 1/12/09	3,668,302.50	9	10	5,443,159.00	112,605.00	1,387,958.00	778,563.00	200	200	2,683,707.00	22	12	675,416.00	852,987.00	98,907.50	67,326,944.00	2.82
1/24/2009	52,789,573.00	1115 (\$2,N), 1116 (\$5,N) - 1/19/09	3,723,835.50	11	12	5,514,547.50	115,827.50	1,376,695.00	860,483.00	225	325	2,692,611.00	16	21	676,936.00	836,996.00	99,541.00	68,687,045.50	2.87
1/31/2009	55,453,471.00	1080 (\$1,N), 1024 (\$20,R) - 1/26/09; 1062 (\$5,N) - 1/28/09	3,837,299.00	13	14	5,700,714.50	121,794.50	1,403,756.00	1,070,879.00	450	600	3,002,883.00	30	40	731,253.00	925,937.50	113,755.50	72,361,743.00	3.03
2/7/2009	62,247,711.00	1035 (\$2,N), 1144 (\$5,N), 1058 (\$10, N) - 2/2/09	4,092,117.00	15	16	6,336,717.00	134,543.00	1,481,812.00	842,746.00	200	225	3,509,032.00	50	60	829,550.00	1,007,529.00	120,267.50	80,602,024.50	3.37
2/14/2009	60,509,056.00	1146 (\$7,N), 1089 (\$1,N) - 2/9/09	4,119,193.00	17	18	6,363,028.00	133,901.50	1,445,616.00	1,013,987.00	325	450	4,082,572.00	73	85	928,813.00	1,010,898.50	120,068.50	79,727,133.50	3.34
2/21/2009	59,194,623.00	1046 (\$2,N), 1140 (\$5,N) - 2/16/09	4,326,401.00	19	20	6,038,807.50	128,493.00	1,439,312.00	1,268,803.00	600	750	5,614,471.00	103	120	1,178,133.00	988,075.00	115,703.50	80,292,822.00	3.36
weekly change	-2.17%		5.03%			-5.10%	-4.04%	-0.44%	25.13%			37.52%			26.84%	-2.26%	-3.64%	0.71%	
	SALES		SALES			SALES	SALES	SALES	SALES			SALES			SALES	SALES	SALES	SALES	% of Sales
Startup to date	34,803,106,421.00		10,368,517,367.00			3,434,842,543.50	9,365,520.50	2,153,319,437.00	448,678,445.00			1,009,778,485.50			237,940,458.00	63,127,067.50	10,964,409.50	52,747,774,126.50	100.0%
Calendar Year to date	421,202,746.00		29,148,075.00			43,683,044.50	175,670.50	10,580,983.00	7,519,308.00			25,821,582.00			6,072,643.00	6,919,409.00	823,602.00	551,947,063.00	100.0%
Fiscal Year to date 2009	1,322,520,419.00		89,420,320.00			136,123,591.00	2,879,690.50	34,163,427.00	22,412,727.00			83,639,890.50			19,732,424.00	20,910,096.00	2,625,606.00	1,734,428,191.00	100.0%