



*WEEKLY SALES SUMMARY*

Unaudited

**Week Ending: 2/21/2015**

Texas Lottery Commission  
Fiscal Year to Date Sales Comparison  
Unaudited

Through the Week Ending 2/21/2015 (25 Weeks)

Sales by Game	FY 2013 *	FY 2014 **	FY 2015	\$ Change		% Change	
				FY 2015 to FY 2013	FY 2015 to FY 2014	FY 2015 to FY 2013	FY 2015 to FY 2014
Instants	\$ 1,511,707,179	\$ 1,560,768,064	\$ 1,628,178,522	\$ 116,471,343	\$ 67,410,458	7.7%	4.3%
Lotto Texas	75,135,626	63,671,531	58,627,832	-16,507,794	-5,043,699	-22.0%	-7.9%
Lotto Extra	-	8,333,204	8,943,535	8,943,535	610,331	-	7.3%
Pick 3	128,966,207	120,914,573	119,679,567	-9,286,640	-1,235,006	-7.2%	-1.0%
Pick 3 Sum It Up	2,419,095	2,410,546	2,331,081	-88,014	-79,465	-3.6%	-3.3%
Cash Five	27,369,436	25,435,200	23,941,342	-3,428,094	-1,493,858	-12.5%	-5.9%
Texas Two Step	29,272,719	26,928,871	25,856,702	-3,416,017	-1,072,169	-11.7%	-4.0%
Mega Millions	50,414,363	107,924,921	79,221,917	28,807,554	-28,703,004	57.1%	-26.6%
Megaplier	11,782,293	22,497,230	18,062,356	6,280,063	-4,434,874	53.3%	-19.7%
Daily 4	34,401,601	39,979,087	40,834,856	6,433,255	855,769	18.7%	2.1%
Daily 4 Sum It Up	2,257,766	2,473,557	2,418,334	160,569	-55,223	7.1%	-2.2%
Powerball	131,228,361	116,684,237	123,118,583	-8,109,778	6,434,346	-6.2%	5.5%
Power Play	13,495,124	13,489,282	14,672,859	1,177,735	1,183,577	8.7%	8.8%
All or Nothing	42,789,762	23,312,011	18,558,540	-24,231,222	-4,753,471	-56.6%	-20.4%
Monopoly	-	-	2,656,425	2,656,425	2,656,425	-	-
<b>Total</b>	<b>\$ 2,061,239,531</b>	<b>\$ 2,134,822,313</b>	<b>\$ 2,167,102,451</b>	<b>\$ 105,862,920</b>	<b>\$ 32,280,138</b>	<b>5.1%</b>	<b>1.5%</b>

\* 2 extra days

\*\* 1 extra day

<sup>1</sup> Monopoly sales were suspended after draw on 12/12/14

Texas Lottery Commission  
Fiscal Year to Date Cumulative Average Sales Comparison  
Unaudited

Through the Week Ending 2/21/2015 (25 Weeks)

Sales by Game	FY 2013	FY 2014	FY 2015
Instant	\$ 8,589,245	\$ 8,918,675	\$ 9,357,348
Lotto Texas	426,907	363,837	336,942
Lotto Extra	-	47,618	51,400
Pick 3	732,763	690,940	687,814
Pick 3 Sum It Up	13,745	13,775	13,397
Cash Five	155,508	145,344	137,594
Texas Two Step	166,322	153,879	148,602
Mega Millions	286,445	616,714	455,298
Megaplier	66,945	128,556	103,807
Daily 4	195,464	228,452	234,683
Daily 4 Sum It Up	12,828	14,135	13,898
Powerball	745,616	666,767	707,578
Power Play	76,677	77,082	84,327
All or Nothing	* 254,701	133,211	106,658
Monopoly	-	- **	48,299
<b>Total</b>	<b>\$ 11,723,166</b>	<b>\$ 12,198,985</b>	<b>\$ 12,487,644</b>

	thru 2/23/2013	thru 2/22/2014	thru 2/21/2015
	176 days	175 days	174 days
*	168 days		** 55 days

Texas Lottery Commission  
Fiscal Year Over Year Change in Sales  
Unaudited  
FY 2015 Compared to FY 2014

			INSTANT TICKETS				DRAW GAMES				TOTAL SALES			
FY 2015			FY 2015	FY 2014	Difference	% change - Cumulative Sales	FY 2015	FY 2014	Difference	% change - Cumulative Sales	FY 2015	FY 2014	Difference	% change - Cumulative Sales
Week	Week Ending													
1	9/6/2014 *		\$54,911,801	\$58,587,757	(\$3,675,956)	-6.3%	\$17,482,488	\$22,369,499	(\$4,887,011)	-21.8%	\$72,394,289	\$80,957,256	(\$8,562,967)	-10.6%
2	9/13/2014		\$61,436,533	\$57,135,931	\$4,300,602	7.5%	\$19,097,081	\$25,412,980	(\$6,315,899)	-24.9%	\$80,533,614	\$82,548,911	(\$2,015,297)	-2.4%
3	9/20/2014		\$60,959,234	\$59,018,194	\$1,941,040	3.3%	\$20,567,894	\$29,161,241	(\$8,593,347)	-29.5%	\$81,527,128	\$88,179,435	(\$6,652,307)	-7.5%
4	9/27/2014		\$59,710,056	\$57,927,984	\$1,782,072	3.1%	\$19,920,828	\$20,012,313	(\$91,485)	-0.5%	\$79,630,884	\$77,940,297	\$1,690,588	2.2%
5	10/4/2014		\$62,119,854	\$62,146,816	(\$26,962)	0.0%	\$18,531,421	\$20,043,557	(\$1,512,136)	-7.5%	\$80,651,275	\$82,190,373	(\$1,539,098)	-1.9%
6	10/11/2014		\$61,253,665	\$60,867,582	\$386,083	0.6%	\$18,985,332	\$19,480,962	(\$495,631)	-2.5%	\$80,238,997	\$80,348,544	(\$109,548)	-0.1%
7	10/18/2014		\$60,230,048	\$60,612,193	(\$382,145)	-0.6%	\$19,538,402	\$20,079,610	(\$541,209)	-2.7%	\$79,768,450	\$80,691,803	(\$923,354)	-1.1%
8	10/25/2014		\$62,384,112	\$59,548,277	\$2,835,835	4.8%	\$21,475,643	\$19,319,928	\$2,155,715	11.2%	\$83,859,755	\$78,868,205	\$4,991,550	6.3%
9	11/1/2014		\$63,404,713	\$61,710,236	\$1,694,477	2.7%	\$23,568,817	\$18,308,976	\$5,259,842	28.7%	\$86,973,530	\$80,019,212	\$6,954,319	8.7%
10	11/8/2014		\$65,486,719	\$61,668,594	\$3,818,125	6.2%	\$23,749,032	\$19,555,070	\$4,193,963	21.4%	\$89,235,751	\$81,223,664	\$8,012,088	9.9%
11	11/15/2014		\$61,745,521	\$60,057,025	\$1,688,496	2.8%	\$17,449,604	\$20,930,071	(\$3,480,468)	-16.6%	\$79,195,125	\$80,987,096	(\$1,791,972)	-2.2%
12	11/22/2014		\$66,353,583	\$63,118,266	\$3,235,317	5.1%	\$17,108,084	\$19,086,770	(\$1,978,687)	-10.4%	\$83,461,667	\$82,205,036	\$1,256,631	1.5%
13	11/29/2014		\$60,471,184	\$57,145,294	\$3,325,890	5.8%	\$17,303,129	\$20,434,618	(\$3,131,489)	-15.3%	\$77,774,313	\$77,579,912	\$194,401	0.3%
14	12/6/2014		\$66,648,696	\$59,883,783	\$6,764,913	11.3%	\$18,862,425	\$22,791,842	(\$3,929,417)	-17.2%	\$85,511,121	\$82,675,625	\$2,835,496	3.4%
15	12/13/2014		\$65,708,630	\$60,310,298	\$5,398,332	9.0%	\$18,649,598	\$35,859,153	(\$17,209,555)	-48.0%	\$84,358,228	\$96,169,451	(\$11,811,223)	-12.3%
16	12/20/2014		\$68,551,298	\$65,088,999	\$3,462,299	5.3%	\$19,051,100	\$46,832,745	(\$27,781,646)	-59.3%	\$87,602,398	\$111,921,744	(\$24,319,347)	-21.7%
17	12/27/2014		\$73,858,618	\$67,721,619	\$6,136,999	9.1%	\$20,006,357	\$18,218,091	\$1,788,266	9.8%	\$93,864,975	\$85,939,710	\$7,925,265	9.2%
18	1/3/2015		\$67,733,268	\$67,162,991	\$570,277	0.8%	\$21,355,167	\$19,140,745	\$2,214,422	11.6%	\$89,088,435	\$86,303,736	\$2,784,699	3.2%
19	1/10/2015		\$64,745,641	\$65,049,914	(\$304,273)	-0.5%	\$22,265,347	\$17,954,333	\$4,311,015	24.0%	\$87,010,988	\$83,004,247	\$4,006,742	4.8%
20	1/17/2015		\$64,015,166	\$62,731,830	\$1,283,336	2.0%	\$23,694,617	\$18,900,213	\$4,794,405	25.4%	\$87,709,783	\$81,632,043	\$6,077,741	7.4%
21	1/24/2015		\$62,569,156	\$59,085,886	\$3,483,270	5.9%	\$19,765,442	\$19,558,830	\$206,612	1.1%	\$82,334,598	\$78,644,716	\$3,689,882	4.7%
22	1/31/2015		\$68,001,588	\$64,099,096	\$3,902,492	6.1%	\$22,877,000	\$20,764,006	\$2,112,995	10.2%	\$90,878,588	\$84,863,102	\$6,015,487	7.1%
23	2/7/2015		\$75,677,650	\$67,717,353	\$7,960,297	11.8%	\$31,662,209	\$22,433,672	\$9,228,537	41.1%	\$107,339,859	\$90,151,025	\$17,188,834	19.1%
24	2/14/2015		\$75,368,712	\$69,949,998	\$5,418,714	7.7%	\$46,091,747	\$25,572,367	\$20,519,380	80.2%	\$121,460,459	\$95,522,365	\$25,938,094	27.2%
25	2/21/2015		\$74,833,076	\$72,422,148	\$2,410,928	3.3%	\$19,865,172	\$31,832,665	(\$11,967,493)	-37.6%	\$94,698,248	\$104,254,813	(\$9,556,565)	-9.2%
26	2/28/2015			\$72,883,830				\$21,827,140				\$94,710,970		
27	3/7/2015			\$73,726,744				\$22,528,352				\$96,255,096		
28	3/14/2015			\$71,026,808				\$25,171,358				\$96,198,166		
29	3/21/2015			\$69,174,125				\$25,837,564				\$95,011,689		
30	3/28/2015			\$66,886,917				\$18,604,870				\$85,491,787		
31	4/4/2015			\$71,218,020				\$19,883,667				\$91,101,687		
32	4/11/2015			\$65,970,648				\$18,875,485				\$84,846,133		
33	4/18/2015			\$64,922,280				\$19,723,048				\$84,645,328		
34	4/25/2015			\$60,578,829				\$18,978,148				\$79,556,977		
35	5/2/2015			\$64,244,545				\$19,029,632				\$83,274,177		
36	5/9/2015			\$65,679,029				\$19,350,478				\$85,029,507		
37	5/16/2015			\$63,627,971				\$19,865,609				\$83,493,580		
38	5/23/2015			\$61,902,451				\$19,892,846				\$81,795,297		
39	5/30/2015			\$61,264,953				\$20,014,636				\$81,279,589		
40	6/6/2015			\$64,019,948				\$21,782,886				\$85,802,834		
41	6/13/2015			\$59,742,598				\$19,736,748				\$79,479,346		
42	6/20/2015			\$59,010,863				\$17,095,336				\$76,106,199		

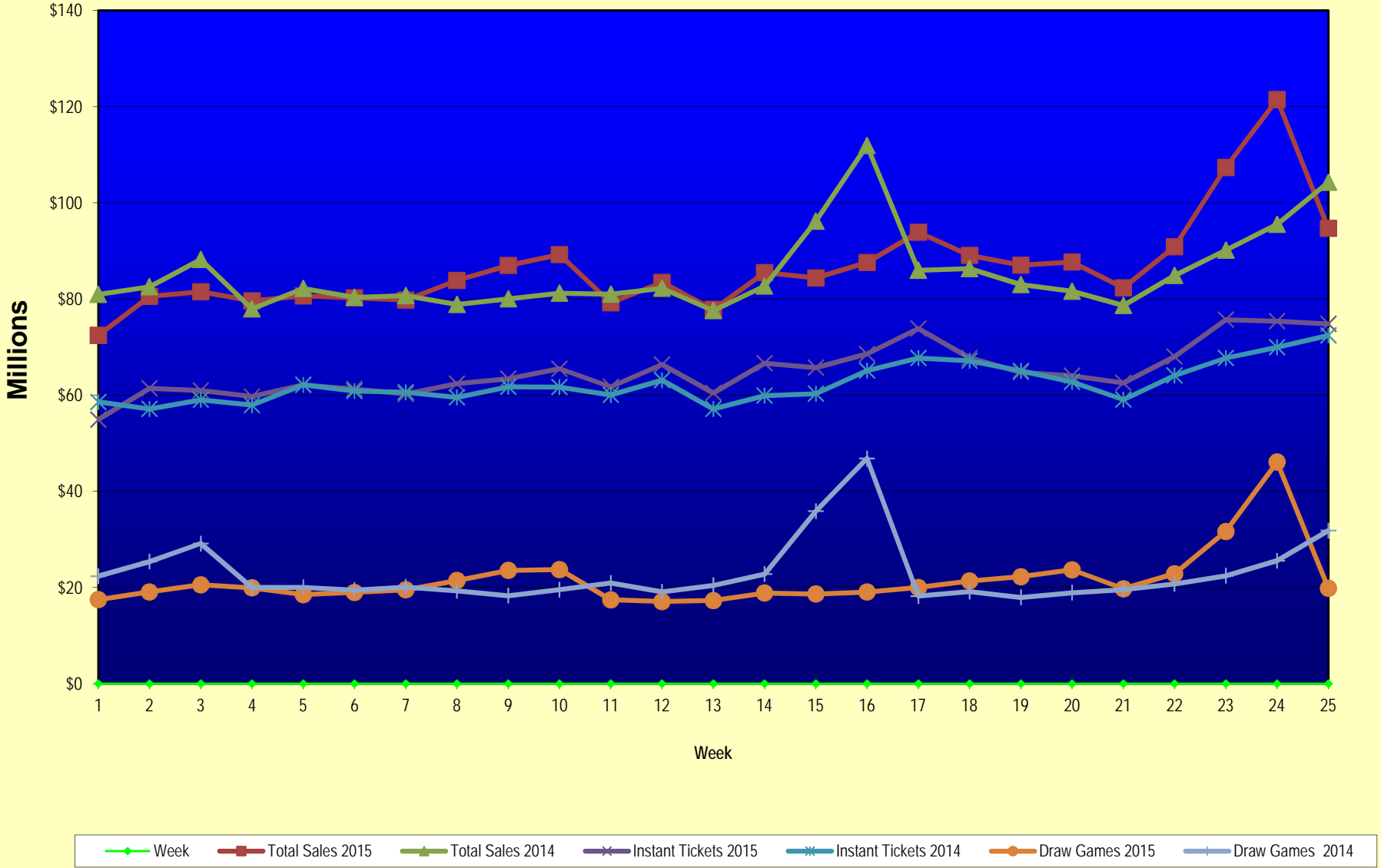
Texas Lottery Commission  
Fiscal Year Over Year Change in Sales  
Unaudited  
FY 2015 Compared to FY 2014

			INSTANT TICKETS				DRAW GAMES				TOTAL SALES			
FY 2015			FY 2015	FY 2014	Difference	% change - Cumulative Sales	FY 2015	FY 2014	Difference	% change - Cumulative Sales	FY 2015	FY 2014	Difference	% change - Cumulative Sales
Week	Week Ending													
43	6/27/2015			\$58,102,191				\$17,635,736				\$75,737,927		
44	7/4/2015			\$61,566,071				\$18,521,529				\$80,087,600		
45	7/11/2015			\$58,729,674				\$17,913,387				\$76,643,061		
46	7/18/2015			\$58,202,035				\$17,602,032				\$75,804,067		
47	7/25/2015			\$57,220,932				\$17,736,889				\$74,957,821		
48	8/1/2015			\$64,207,294				\$18,208,743				\$82,416,037		
49	8/8/2015			\$60,066,007				\$19,022,945				\$79,088,952		
50	8/15/2015			\$58,374,809				\$18,567,246				\$76,942,055		
51	8/22/2015			\$57,277,475				\$18,916,460				\$76,193,935		
52	8/29/2015			\$61,884,256				\$17,283,925				\$79,168,181		
	8/31/2015 **			\$7,949,803				\$706,956				\$8,656,759		
Total thru Current Week			\$1,628,178,522	\$1,560,768,064	\$67,410,458	4.3%	\$538,923,929	\$574,054,249	(\$35,130,321)	-6.1%	\$2,167,102,451	\$2,134,822,313	\$32,280,138	1.5%
Fiscal Year Total			\$1,628,178,522	\$3,280,229,170			\$538,923,929	\$1,104,367,893			\$2,167,102,451	\$4,384,597,063		

\* FY 15 includes 6 days

\*\* FY 15 includes 2 days; FY 14 includes 1 day

### Texas Lottery Commission Fiscal Year Over Year Change in Sales



Note: Week 1 is not a full week of sales as this report is prepared on a Fiscal Year basis.

Texas Lottery Commission  
Instant Tickets by Price Point  
Sales, Prize Expense, Sales Contribution and Payout Percentage With Year Over Year Changes  
Unaudited

Fiscal Year	Price Point	# of Active Games	FY Sales	% of Instant Ticket Sales	Year over Year Change in Sales	FY Prize Expense	Year over Year Change in Prize Expense	FY Sales Contribution	Year over Year Change in Contribution	Average Prize Payout %	Year over Year Change in Payout %
2014	\$1.00	25	90,946,445	5.8%		54,511,571		36,434,874		59.9%	-1.3%
Through	\$2.00	30	188,173,372	12.1%		122,179,506		65,993,866		64.9%	-0.1%
2/22/2014	\$3.00	15	158,160,042	10.1%		103,542,716		54,617,326		65.5%	-0.1%
	\$5.00	46	524,817,805	33.6%		356,447,259		168,370,546		67.9%	-0.2%
	\$10.00	13	284,028,320	18.2%		199,899,576		84,128,744		70.4%	-1.0%
	\$20.00	9	257,965,080	16.5%		193,146,948		64,818,132		74.9%	0.0%
	\$50.00	2	56,677,000	3.6%		44,001,150		12,675,850		77.6%	0.0%
<b>Total</b>		<b>140</b>	<b>\$1,560,768,064</b>			<b>\$1,073,728,724</b>		<b>\$487,039,340</b>		<b>68.8%</b>	<b>-0.2%</b>
2015	\$1.00	19	84,168,010	5.2%		51,289,945		32,878,065		60.9%	1.7%
thru	\$2.00	30	170,293,980	10.5%		112,149,661		58,144,319		65.9%	1.6%
2/21/2015	\$3.00	13	165,077,097	10.1%		108,827,624		56,249,473		65.9%	0.5%
	\$5.00	41	515,669,655	31.7%		350,321,280		165,348,375		67.9%	0.0%
	\$10.00	15	323,035,740	19.8%		227,499,136		95,536,604		70.4%	0.2%
	\$20.00	9	295,512,640	18.1%		221,525,805		73,986,835		75.0%	0.1%
	\$50.00	3	74,421,400	4.6%		57,841,960		16,579,440		77.7%	0.1%
<b>Total</b>		<b>130</b>	<b>\$1,628,178,522</b>			<b>\$1,129,455,411</b>		<b>\$498,723,111</b>		<b>69.4%</b>	<b>0.7%</b>
Variance	\$1.00	-6	-6,778,435		-7.5%	-3,221,626	-5.9%	-3,556,809	-9.8%	1.00%	
2015 to	\$2.00	0	-17,879,392		-9.5%	-10,029,845	-8.2%	-7,849,547	-11.9%	0.93%	
2014	\$3.00	-2	6,917,055		4.4%	5,284,908	5.1%	1,632,147	3.0%	0.46%	
	\$5.00	-5	-9,148,150		-1.7%	-6,125,979	-1.7%	-3,022,171	-1.8%	0.02%	
	\$10.00	2	39,007,420		13.7%	27,599,560	13.8%	11,407,860	13.6%	0.05%	
	\$20.00	0	37,547,560		14.6%	28,378,857	14.7%	9,168,703	14.1%	0.09%	
	\$50.00	1	17,744,400		31.3%	13,840,811	31.5%	3,903,589	30.8%	0.09%	
<b>Total</b>		<b>-10</b>	<b>\$67,410,458</b>		<b>4.3%</b>	<b>\$55,726,687</b>	<b>5.2%</b>	<b>\$11,683,771</b>	<b>2.4%</b>	<b>0.57%</b>	

Notes - Instant Ticket Variances

Texas Lottery Commission  
**Instant Tickets by Price Point**  
**Sales, Prize Expense, Sales Contribution and Payout Percentage With Year Over Year Changes**  
 Unaudited

		FY 2015		FY 2014		Difference
Sales	\$1 - \$5	\$935,208,742		\$962,097,664		-\$26,888,922
Prize Exp.	\$1 - \$5	\$622,588,509		\$636,681,051		-\$14,092,542
Sales Cont.	\$1 - \$5	\$312,620,233		\$325,416,613		-\$12,796,380
Prize Exp. %	\$1 - \$5	66.6%		66.2%		0.4%
		FY 2015		FY 2014		Difference
Sales	\$10 - \$50	\$692,969,780		\$598,670,400		\$94,299,380
Prize Exp.	\$10 - \$50	\$506,866,902		\$437,047,673		\$69,819,228
Sales Cont.	\$10 - \$50	\$186,102,878		\$161,622,727		\$24,480,152
Prize Exp. %	\$10 - \$50	73.1%		73.0%		0.1%
		FY 2015		FY 2014		Difference
Sales	Instant	\$1,628,178,522		\$1,560,768,064		\$67,410,458
Prize Exp.	Instant	\$1,129,455,411		\$1,073,728,724		\$55,726,687
Sales Cont.	Instant	\$498,723,111		\$487,039,340		\$11,683,771
Prize Exp. %	Instant	69.4%		68.8%		0.6%

		FY 2015		FY 2014		Difference
Sales	\$1 - \$10	\$1,258,244,482		\$1,246,125,984		\$12,118,498
Prize Exp.	\$1 - \$10	\$850,087,646		\$836,580,627		\$13,507,019
Sales Cont.	\$1 - \$10	\$408,156,836		\$409,545,357		-\$1,388,521
Prize Exp. %	\$1 - \$10	67.6%		67.1%		0.4%
		FY 2015		FY 2014		Difference
Sales	\$20 - \$50	\$369,934,040		\$314,642,080		\$55,291,960
Prize Exp.	\$20 - \$50	\$279,367,766		\$237,148,097		\$42,219,668
Sales Cont.	\$20 - \$50	\$90,566,274		\$77,493,983		\$13,072,292
Prize Exp. %	\$20 - \$50	75.5%		75.4%		0.1%
		FY 2015		FY 2014		Difference
Sales	Instant	\$1,628,178,522		\$1,560,768,064		\$67,410,458
Prize Exp.	Instant	\$1,129,455,411		\$1,073,728,724		\$55,726,687
Sales Cont.	Instant	\$498,723,111		\$487,039,340		\$11,683,771
Prize Exp. %	Instant	69.4%		68.8%		0.6%



Texas Lottery Commission  
**Weekly Sales Summary**  
**& Comparison to Previous Week**  
 Unaudited

	Week Ending 2/21/2015	% of Sales	Week Ending 2/14/2015	% of Sales	\$ change	% change
	<u>THIS WEEK</u>		<u>LAST WEEK</u>			
Total Sales	<u>\$94,698,248</u>		<u>\$121,460,459</u>		<u>-\$26,762,211</u>	<u>-22.03%</u>
Instant Tickets	<u>\$74,833,076</u>	79.0%	<u>\$75,368,712</u>	62.1%	<u>-\$535,636</u>	<u>-0.71%</u>
Lotto	\$2,500,395	2.6%	\$2,732,167	2.2%	-\$231,772	-8.48%
Lotto Extra	\$391,610	0.4%	\$422,012	0.3%	-\$30,402	-7.20%
Pick 3	\$5,114,765	5.4%	\$5,014,682	4.1%	\$100,083	2.00%
Pick 3 Sum It Up	\$110,692	0.1%	\$102,578	0.1%	\$8,114	7.91%
Cash Five	\$1,011,829	1.1%	\$1,010,709	0.8%	\$1,120	0.11%
Texas Two Step	\$942,295	1.0%	\$874,297	0.7%	\$67,998	7.78%
Mega Millions	\$3,027,808	3.2%	\$2,863,303	2.4%	\$164,505	5.75%
Megaplier	\$721,729	0.8%	\$697,827	0.6%	\$23,902	3.43%
Daily 4	\$1,782,129	1.9%	\$1,735,161	1.4%	\$46,968	2.71%
Daily 4 Sum It Up	\$104,637	0.1%	\$98,225	0.1%	\$6,412	6.53%
Powerball	\$2,964,066	3.1%	\$27,170,708	22.4%	-\$24,206,642	-89.09%
Power Play	\$418,243	0.4%	\$2,547,539	2.1%	-\$2,129,296	-83.58%
All or Nothing	\$774,980	0.8%	\$822,540	0.7%	-\$47,560	-5.78%
Monopoly	-\$5	0.0%	\$0	0.0%	-\$5	0.00%
Total Draw Game Sales	<u>\$19,865,172</u>		<u>\$46,091,747</u>		<u>-\$26,226,575</u>	<u>-56.90%</u>

\* Totals may not sum due to rounding.

Texas Lottery Commission  
Weekly Sales Summary  
Unaudited

INSTANT TICKETS  
TOP TEN SELLING GAMES

For the Week Ending: 2/21/15

Rank	Price Point	Game	Sales (Millions)
1	\$ 20	100X THE CASH	\$ 6.481
2	\$ 10	50X THE CASH	\$ 4.931
3	\$ 10	BIG MONEY	\$ 4.217
4	\$ 5	20X THE CASH	\$ 3.820
5	\$ 3	LOTERIA	\$ 3.109
6	\$ 5	HOT NUMBERS	\$ 3.030
7	\$ 50	MILLIONAIRES CLUB	\$ 2.874
8	\$ 5	\$100,000 CASHWORD-O-RAMA	\$ 2.482
9	\$ 20	\$500 MILLION EXTREME CASH BLAST	\$ 2.451
10	\$ 3	BONUS CASHWORD	\$ 2.377

Texas Lottery Commission  
Prize Payout Tracking Report  
Unaudited

Through the Week Ending: 2/21/15

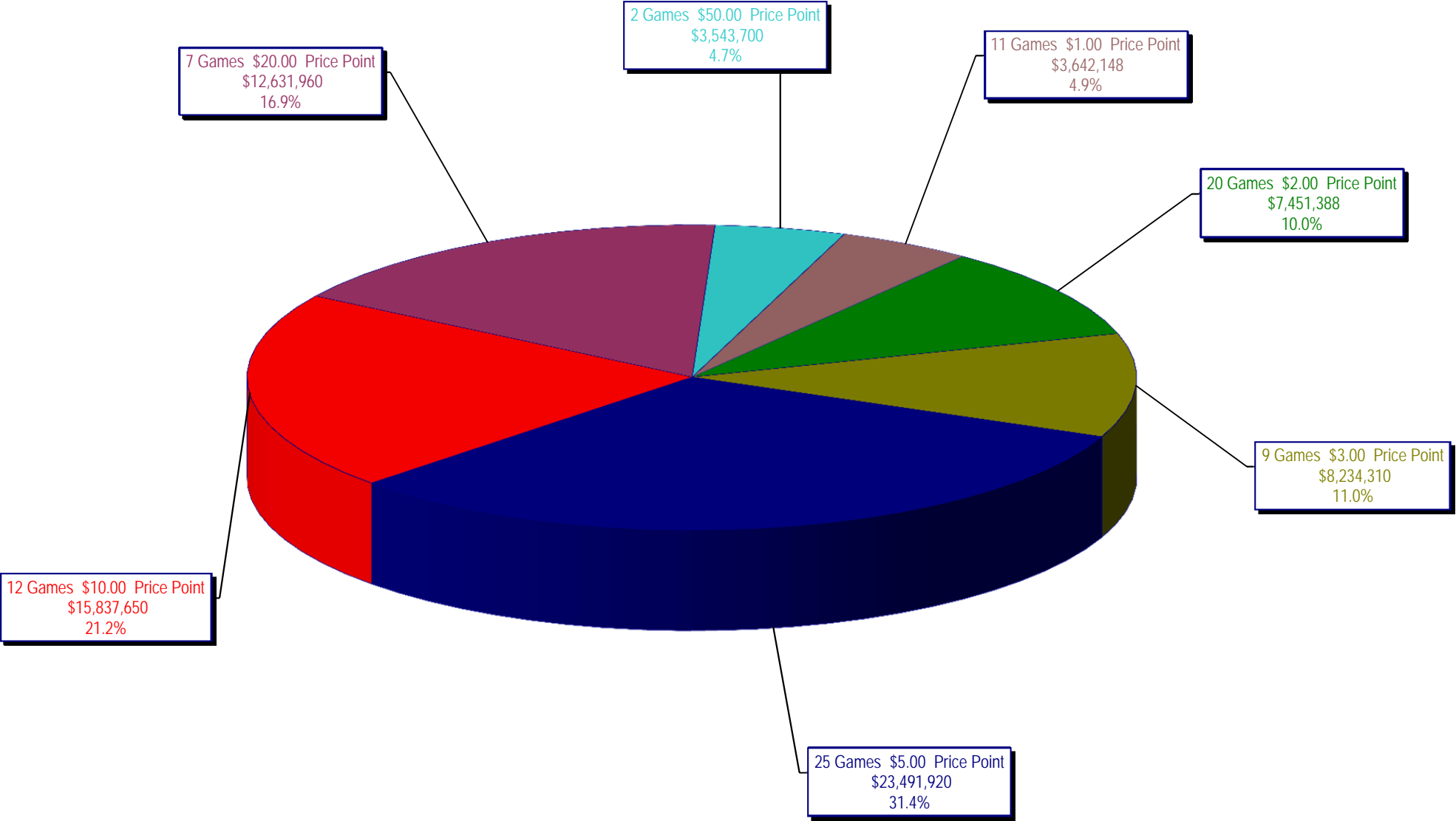
Draw Game Sales

		FY Sales Through Week Ending 2/21/2015		FY Prize Expense Through Week Ending 2/21/2015	Actual* Prize Payout	Base Payout (Prize Pool)
Lotto	\$	58,627,832	\$	29,418,581	50.18%	54.00%
Lotto Extra		8,943,535		4,907,292	54.87%	53.70%
Pick 3		119,679,567		57,126,390	47.73%	50.00%
Pick 3 Sum It Up		2,331,081		1,082,000	46.42%	50.00%
Cash Five		23,941,342		11,970,684	50.00%	50.00%
Texas Two Step		25,856,702		13,208,887	51.08%	50.00%
Mega Millions		79,221,917		40,393,154	50.99%	50.00%**
Megaplier		18,062,356		9,029,752	49.99%	N/A
Daily 4		40,834,856		19,435,875	47.60%	50.00%
Daily 4 Sum It Up		2,418,334		951,675	39.35%	50.00%
Powerball		123,118,583		61,613,546	50.04%	50.00%**
Power Play		14,672,859		7,343,388	50.05%	N/A
All or Nothing		18,558,540		11,170,896	60.19%	55.98%
Monopoly		2,656,425		3,617,028	136.16%	50.00%
<b>Totals</b>	\$	<b>538,923,929</b>	\$	<b>271,269,146</b>	<b>50.34%</b>	

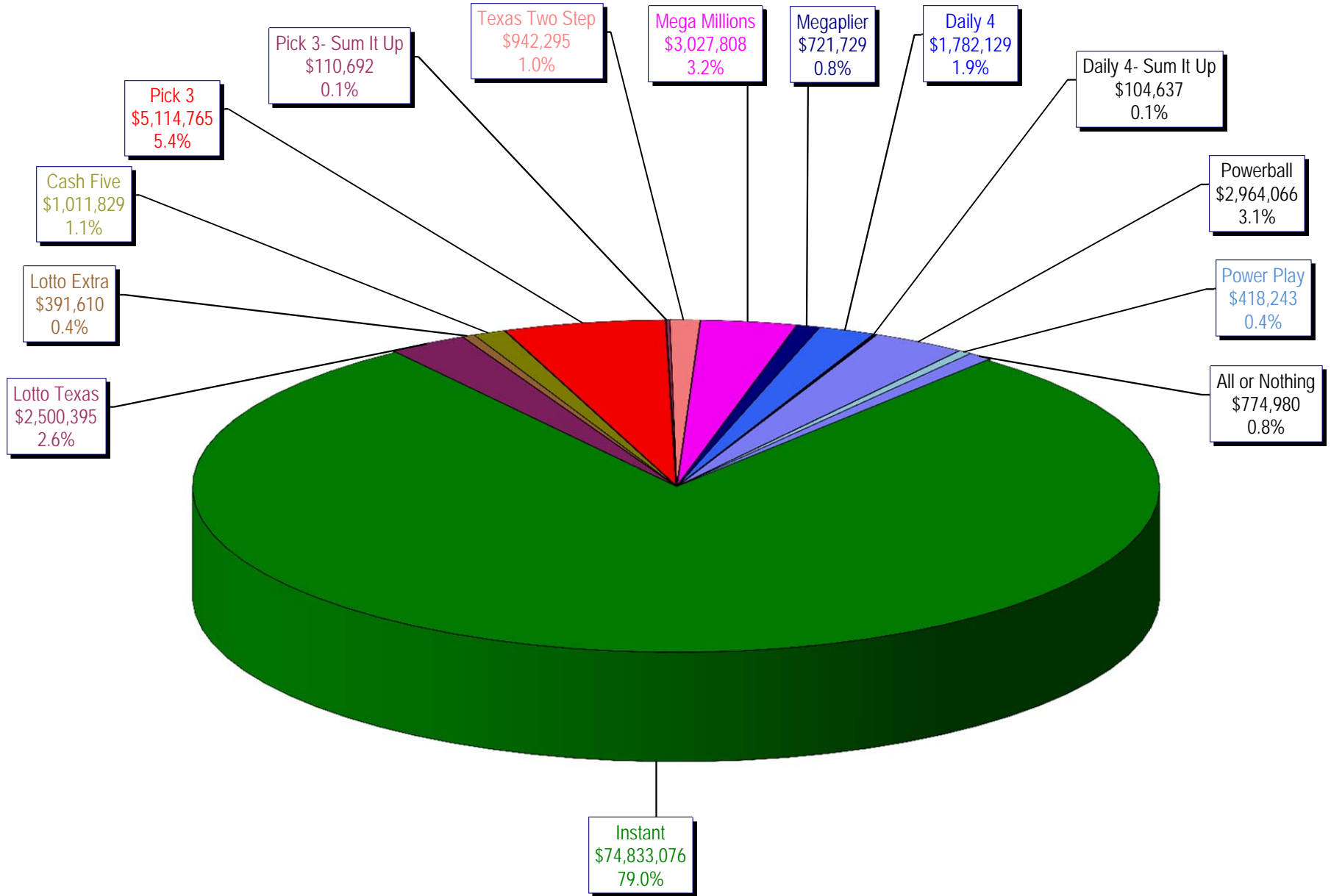
\* Before Unclaimed Prizes

\*\* Estimated; depends on # of guaranteed prizes won in Texas

Texas Lottery Commission  
Instant Ticket Sales  
For the Week Ending 2/21/15  
(Unaudited)



**Texas Lottery Commission  
All Game Sales  
For the Week Ending 2/21/15  
(Unaudited)**



Texas Lottery Commission - Weekly Sales Summary for FY 2015 (Unaudited)

Week Ended	Instant Games	New Games & Dates	Lotto Texas	Jackpot W	S	Lotto Extra	Pick 3	Pick 3 Sum It Up	Cash Five	Texas Two Step	Jackpot M	TH	Mega Millions	Jackpot T	F	Megaplier	Daily 4	Daily 4 Sum It Up	Powerball	Jackpot W	S	Power Play	All or Nothing	Monopoly	Jackpot F	Total	Per Cap.
9/06/2014*	62,861,604	1589 (\$1.N); 1592 (\$5.N) - 9/1/14	2,281,237	6	6.25	341,232	4,827,600	92,305	958,777	918,635	225	300	1,847,432	25	33	475,313	1,640,023	104,626	3,465,202	100	110	450,723	786,340			81,051,048	3.11
9/13/2014	61,436,533	0	2,299,834	6.5	6.75	344,225	4,787,666	91,850	960,067	1,214,553	425	575	1,992,737	41	52	501,468	1,571,433	97,036	3,957,407	127	149	497,718	781,088			80,533,614	3.09
9/20/2014	60,959,234	1647 (\$2.N); 1619 (\$5.N) - 9/15/14	2,307,003	7	7.25	347,119	4,624,949	89,960	952,214	1,582,291	750	925	2,149,120	62	72	528,733	1,536,913	95,355	4,985,548	171	196	597,868	770,822			81,527,128	3.13
9/27/2014	59,710,056	0	2,357,199	7.5	8.25	353,734	4,540,964	89,289	938,745	1,244,640	1,175	200	2,417,365	83	93	579,889	1,512,957	91,998	4,478,698	225	40	544,723	770,628			79,630,884	3.06
10/4/2014	62,119,854	0	2,385,322	9	9.5	360,937	4,942,321	94,197	971,047	854,141	200	200	2,966,004	105	120	692,825	1,588,795	98,392	2,443,237	50	60	348,166	786,038			80,651,275	3.09
10/11/2014	61,253,665	1608 (\$1.N); 1653 (\$5.N); 1651 (\$10.N) - 10/6/14	2,363,624	10.25	11	355,219	4,893,634	94,926	959,659	935,385	225	300	3,310,874	136	150	748,248	1,580,735	94,717	2,522,774	70	80	356,145	769,392			80,238,997	3.08
10/18/2014	60,230,048	0	2,267,582	11.5	5	343,643	4,664,420	92,081	946,399	842,255	200	225	3,839,669	166	180	841,086	1,522,939	90,307	2,937,145	90	100	398,723	752,154			79,768,450	3.06
10/25/2014	62,384,112	1655 (\$1.N); 1652 (\$2.N); 1638 (\$10.N); 1637 (\$20.N) - 10/20/14	2,201,043	5.25	5.5	330,460	4,585,640	89,676	933,854	823,726	200	225	4,755,898	200	224	990,074	1,560,894	96,697	3,449,128	110	125	444,897	746,246	467,410	15	83,859,755	3.22
11/1/2014	63,404,713	1648 (\$3.N) - 10/31/14	2,289,864	5.75	6	346,139	4,620,420	87,141	925,312	993,957	300	425	5,950,540	252	284	1,199,010	1,554,893	93,945	3,903,664	142	159	494,803	733,770	375,360	18	86,973,530	3.34
11/8/2014	65,486,719	1600 (\$2.N); 1656 (\$5.N) - 11/3/14	2,269,671	6.25	6.5	345,144	4,823,896	92,098	958,406	1,336,742	550	700	4,908,320	321	15	1,013,337	1,669,728	97,535	4,560,744	178	203	561,387	753,046	358,980	21	89,235,751	3.42
11/15/2014	61,745,521	1649 (\$5.N) - 11/13/14	2,172,758	6.75	7	326,413	4,582,139	86,975	936,682	1,604,425	900	1,100	1,863,118	20	26	471,023	1,587,677	91,661	2,341,252	40	50	329,995	730,482	325,005	15	79,195,125	3.04
11/22/2014	66,353,583	1591 (\$2.N); 1659 (\$5.N); 1650 (\$5.N) - 11/17/14	2,199,718	7.25	7.5	334,361	4,639,564	87,788	933,490	851,281	200	225	2,013,021	35	43	503,022	1,588,603	91,235	2,470,536	60	70	341,955	728,436	325,095	18	83,461,667	3.20
11/29/2014	60,471,184	0	2,214,747	7.75	8.5	337,671	4,624,896	88,080	912,039	955,695	300	400	2,040,181	52	61	503,117	1,577,411	90,692	2,632,388	80	90	362,091	681,192	282,930	21	77,774,313	2.98
12/6/2014	66,648,696	1603 (\$1.N); 1646 (\$2.N); 1645 (\$5.N) - 12/01/14	2,368,094	9	9.75	359,684	5,203,649	97,575	987,770	1,292,696	550	725	2,397,206	70	80	577,206	1,786,014	106,986	2,312,972	40	50	333,011	759,472	280,090	25	85,511,121	3.28
12/13/2014	65,708,630	1613 (\$3.N) - 12/10/14	2,390,912	10.25	11	360,296	4,965,326	90,906	968,380	860,861	200	225	2,763,671	91	102	644,993	1,730,629	100,850	2,441,310	60	70	346,197	743,438	241,830	25	84,358,228	3.24
12/20/2014	68,551,298	1664 (\$2.N); 1665 (\$5.N); 1663 (\$10.N) - 12/15/14	2,403,956	11.5	12.25	365,207	4,980,735	94,034	972,605	840,763	200	200	3,150,078	113	125	726,548	1,722,159	99,838	2,593,858	80	90	364,498	736,822	0		87,602,398	3.36
12/27/2014	73,858,618	0	2,569,741	13	13.75	386,983	4,792,061	87,561	939,518	839,204	225	300	3,523,976	142	156	786,676	1,640,658	93,236	3,244,628	100	110	431,074	671,042	0		93,864,975	3.60
1/3/2015	67,733,268	0	2,579,932	14.5	5	391,775	4,873,207	92,090	972,634	794,716	200	225	4,061,330	172	188	895,771	1,677,541	97,009	3,730,196	120	131	487,253	701,714	0		89,088,435	3.42
1/10/2015	64,745,641	1661 (\$1.N); 1609 (\$3.N); 1666 (\$20.N) - 1/5/15	2,269,384	5.25	5.5	353,334	4,633,563	89,809	965,014	839,722	200	225	5,160,810	206	221	1,101,434	1,574,307	92,418	3,969,588	146	162	507,993	708,082	(110)		87,010,988	3.34
1/17/2015	64,015,166	0	2,321,110	5.75	6	362,124	4,713,502	94,319	961,349	870,940	300	200	5,796,919	246	270	1,219,766	1,636,351	95,924	4,374,663	176	194	557,630	690,082	(60)		87,709,783	3.37
1/24/2015	62,569,156	1657 (\$2.N); 1662 (\$5.N) - 1/19/15	2,172,603	6.25	6.5	340,335	4,515,824	94,602	932,895	880,883	225	300	2,000,036	15	20	513,701	1,607,911	97,318	5,280,704	208	230	641,822	686,808	0		82,334,598	3.16
1/31/2015	68,001,588	0	2,305,997	6.75	7	365,475	4,719,942	97,954	969,989	1,217,761	425	575	2,127,914	25	32	545,728	1,700,632	97,176	7,153,312	261	289	841,856	733,290	(25)		90,878,588	3.49
2/7/2015	75,677,650	1701 (\$1.N); 1670 (\$5.N); 1620 (\$10.N) - 2/2/15	2,493,246	7.25	7.5	392,502	5,114,958	105,675	1,009,912	1,511,180	725	925	2,378,853	40	49	604,450	1,791,305	103,366	13,888,215	317	380	1,485,755	782,868	(75)		107,339,859	4.12
2/14/2015	75,368,712	0	2,732,167	7.75	8.5	422,012	5,014,682	102,578	1,010,709	874,297	200	225	2,863,303	61	74	697,827	1,735,161	98,225	27,170,708	500	40	2,547,539	822,540	0		121,460,459	4.66
2/21/2015	74,833,076	1660 (\$2.N); 1612 (\$2.N); 1676 (\$5.N) - 2/16/15	2,500,395	9.25	10	391,610	5,114,765	110,692	1,011,829	942,295	300	200	3,027,808	88	100	721,729	1,782,129	104,637	2,964,066	50	60	418,243	774,980	(5)		94,698,248	3.63
weekly change	-0.7%		-8.5%			-7.2%	2.0%	7.9%	0.1%	7.8%			5.7%			3.4%	2.7%	6.5%	-89.1%			-83.6%	-5.8%	0.0%		-22.0%	
<b>SALES</b>	<b>SALES</b>	<b>SALES</b>	<b>SALES</b>	<b>SALES</b>	<b>SALES</b>	<b>SALES</b>	<b>SALES</b>	<b>SALES</b>	<b>SALES</b>	<b>SALES</b>	<b>SALES</b>	<b>SALES</b>	<b>SALES</b>	<b>SALES</b>	<b>SALES</b>	<b>SALES</b>	<b>SALES</b>	<b>SALES</b>	<b>SALES</b>	<b>SALES</b>	<b>SALES</b>	<b>SALES</b>	<b>SALES</b>	<b>SALES</b>	<b>SALES</b>	<b>SALES</b>	<b>% of Sales</b>
Calendar Year to date	514,856,447		17,909,906			2,796,778	36,218,101	741,110	7,306,834	7,454,250			25,267,779			5,830,166	12,620,918	735,384	66,562,370			7,230,889	5,525,774	(275)		711,056,431	100.0%
Fiscal Year to date 2015	1,628,178,522		58,627,832			8,943,535	119,679,567	2,331,081	23,941,342	25,856,702			79,221,917			18,062,356	40,834,856	2,418,334	123,118,583			14,672,859	18,558,540	2,656,425		2,167,102,451	100.0%

\*Full week includes 1 day from FY14