



WEEKLY SALES SUMMARY

Unaudited

[Week Ending: 02/23/2013](#)

Texas Lottery Commission
Fiscal Year to Date Sales Comparison
Unaudited

Through the week ending 02/23/2013 (26 weeks)

Sales by Game	FY 2011 *	FY 2012 **	FY 2013	\$ Change		% Change	
				FY 2013 to FY 2011	FY 2013 to FY 2012	FY 2013 to FY 2011	FY 2013 to FY 2012
Instants	\$ 1,381,893,447	\$ 1,459,396,840	\$ 1,511,707,179	\$ 129,813,732	\$ 52,310,339	9.4%	3.6%
Lotto Texas	85,661,141	85,376,749	75,135,626	-10,525,515	-10,241,123	-12.3%	-12.0%
Pick 3	134,531,228	130,894,685	128,966,207	-5,565,021	-1,928,478	-4.1%	-1.5%
Pick 3 Sum It Up	2,722,755	2,682,072	2,419,095	-303,661	-262,978	-11.2%	-9.8%
Cash Five	31,758,394	31,857,196	27,369,436	-4,388,958	-4,487,760	-13.8%	-14.1%
Texas Two Step	23,343,838	31,198,718	29,272,719	5,928,881	-1,925,999	25.4%	-6.2%
Mega Millions	92,442,441	73,527,447	50,414,363	-42,028,078	-23,113,084	-45.5%	-31.4%
Megaplier	18,948,720	16,317,890	11,782,293	-7,166,427	-4,535,597	-37.8%	-27.8%
Daily 4	27,917,174	30,963,466	34,401,601	6,484,428	3,438,135	23.2%	11.1%
Daily 4 Sum It Up	2,183,351	2,282,337	2,257,766	74,415	-24,572	3.4%	-1.1%
Powerball	43,218,421	77,333,468	131,228,361	88,009,940	53,894,894	203.6%	69.7%
Power Play	10,292,168	14,519,019	13,495,124	3,202,956	-1,023,895	31.1%	-7.1%
All or Nothing	-	-	42,789,762	42,789,762	42,789,762	-	-
Total	\$ 1,854,913,077	\$ 1,956,349,886	\$ 2,061,239,531	\$ 206,326,454	\$ 104,889,645	11.1%	5.4%

* 3 extra days

** 2 extra days

Texas Lottery Commission
 Fiscal Year to Date Cumulative Average Sales Comparison
 Unaudited

Through the week ending 02/23/2013 (26 weeks)

Sales by Game	FY 2011	FY 2012	FY 2013
Instant	\$ 7,720,075	\$ 8,198,859	\$ 8,589,245
Lotto Texas	478,554	479,645	426,907
Pick 3	751,571	735,363	732,763
Pick 3 Sum It Up	15,211	15,068	13,745
Cash Five	177,421	178,973	155,508
Texas Two Step	130,413	175,274	166,322
Mega Millions	516,438	413,076	286,445
Megaplier	105,859	91,674	66,945
Daily 4	155,962	173,952	195,464
Daily 4 Sum It Up	12,197	12,822	12,828
Powerball	241,444	434,458	745,616
Power Play	57,498	81,568	76,677
All or Nothing	-	-	254,701 *
Total	\$ <u>10,362,643</u>	\$ <u>10,990,730</u>	\$ <u>11,723,166</u>
	thru 02/26/2011 179 days	thru 02/25/2012 178 days	thru 02/23/2013 176 days * 168 days

Texas Lottery Commission
Fiscal Year Over Year Change in Sales
Unaudited
FY 2013 Compared to FY 2012

Week	FY 2013 Week Ending	INSTANT TICKETS				DRAW GAMES				TOTAL SALES			
		FY 2013	FY 2012	Difference	% change - Cumulative Sales	FY 2013	FY 2012	Difference	% change - Cumulative Sales	FY 2013	FY 2012	Difference	% change - Cumulative Sales
1	9/1/2012**	\$9,611,328	\$25,147,181	(\$15,535,853)	-61.8%	\$3,712,535	\$9,704,561	(\$5,992,026)	-61.7%	\$13,323,863	\$34,851,742	(\$21,527,879)	-61.8%
2	9/8/2012	\$56,941,761	\$50,591,068	\$6,350,693	12.6%	\$19,305,417	\$17,681,853	\$1,623,564	9.2%	\$76,247,178	\$68,272,921	\$7,974,257	11.7%
3	9/15/2012	\$56,302,875	\$49,835,063	\$6,467,812	13.0%	\$20,857,230	\$16,842,326	\$4,014,904	23.8%	\$77,160,105	\$66,677,389	\$10,482,716	15.7%
4	9/22/2012	\$54,974,438	\$49,777,138	\$5,197,300	10.4%	\$20,570,277	\$17,504,800	\$3,065,477	17.5%	\$75,544,715	\$67,281,938	\$8,262,777	12.3%
5	9/29/2012	\$54,606,674	\$51,040,274	\$3,566,400	7.0%	\$20,462,690	\$18,653,100	\$1,809,591	9.7%	\$75,069,364	\$69,693,374	\$5,375,991	7.7%
6	10/6/2012	\$59,223,327	\$53,715,157	\$5,508,170	10.3%	\$19,279,973	\$17,225,680	\$2,054,293	11.9%	\$78,503,300	\$70,940,837	\$7,562,463	10.7%
7	10/13/2012	\$57,075,606	\$51,942,121	\$5,133,485	9.9%	\$18,638,467	\$17,854,980	\$783,487	4.4%	\$75,714,073	\$69,797,101	\$5,916,972	8.5%
8	10/20/2012	\$56,630,134	\$52,837,769	\$3,792,365	7.2%	\$18,998,943	\$19,558,519	(\$559,577)	-2.9%	\$75,629,077	\$72,396,288	\$3,232,789	4.5%
9	10/27/2012	\$55,789,743	\$52,206,644	\$3,583,099	6.9%	\$20,130,190	\$21,504,565	(\$1,374,376)	-6.4%	\$75,919,933	\$73,711,209	\$2,208,724	3.0%
10	11/3/2012	\$58,142,777	\$56,265,310	\$1,877,467	3.3%	\$20,638,008	\$20,870,086	(\$232,079)	-1.1%	\$78,780,785	\$77,135,396	\$1,645,389	2.1%
11	11/10/2012	\$57,484,804	\$55,682,645	\$1,802,159	3.2%	\$20,862,872	\$17,862,404	\$3,000,468	16.8%	\$78,347,676	\$73,545,049	\$4,802,627	6.5%
12	11/17/2012	\$55,805,228	\$54,978,079	\$827,149	1.5%	\$21,660,705	\$17,879,985	\$3,780,721	21.1%	\$77,465,933	\$72,858,064	\$4,607,870	6.3%
13	11/24/2012	\$61,331,977	\$53,942,448	\$7,389,529	13.7%	\$27,172,853	\$16,877,145	\$10,295,708	61.0%	\$88,504,830	\$70,819,593	\$17,685,237	25.0%
14	12/1/2012	\$58,420,598	\$57,153,469	\$1,267,129	2.2%	\$62,797,943	\$18,298,636	\$44,499,307	243.2%	\$121,218,541	\$75,452,105	\$45,766,436	60.7%
15	12/8/2012	\$62,489,745	\$55,318,284	\$7,171,461	13.0%	\$19,630,155	\$19,033,326	\$596,829	3.1%	\$82,119,900	\$74,351,610	\$7,768,290	10.4%
16	12/15/2012	\$59,661,880	\$58,612,629	\$1,049,251	1.8%	\$20,064,982	\$20,045,279	\$19,704	0.1%	\$79,726,862	\$78,657,908	\$1,068,955	1.4%
17	12/22/2012	\$63,556,886	\$60,628,256	\$2,928,630	4.8%	\$19,084,653	\$22,572,986	(\$3,488,333)	-15.5%	\$82,641,539	\$83,201,242	(\$559,703)	-0.7%
18	12/29/2012	\$63,547,886	\$63,065,007	\$482,879	0.8%	\$17,359,874	\$19,948,521	(\$2,588,647)	-13.0%	\$80,907,760	\$83,013,528	(\$2,105,768)	-2.5%
19	1/5/2013	\$60,452,721	\$60,479,896	(\$27,175)	0.0%	\$18,833,047	\$17,331,888	\$1,501,159	8.7%	\$79,285,768	\$77,811,784	\$1,473,984	1.9%
20	1/12/2013	\$58,862,997	\$57,689,526	\$1,173,471	2.0%	\$18,879,167	\$17,568,732	\$1,310,435	7.5%	\$77,742,164	\$75,258,258	\$2,483,906	3.3%
21	1/19/2013	\$58,494,057	\$58,704,854	(\$210,797)	-0.4%	\$19,258,004	\$19,886,540	(\$628,537)	-3.2%	\$77,752,061	\$78,591,394	(\$839,334)	-1.1%
22	1/26/2013	\$57,871,744	\$57,611,325	\$260,419	0.5%	\$20,093,215	\$20,641,697	(\$548,483)	-2.7%	\$77,964,959	\$78,253,022	(\$288,064)	-0.4%
23	2/2/2013	\$61,846,715	\$65,553,366	(\$3,706,651)	-5.7%	\$21,032,335	\$23,689,855	(\$2,657,521)	-11.2%	\$82,879,050	\$89,243,221	(\$6,364,172)	-7.1%
24	2/9/2013	\$70,374,906	\$75,070,485	(\$4,695,579)	-6.3%	\$21,183,638	\$28,361,583	(\$7,177,945)	-25.3%	\$91,558,544	\$103,432,068	(\$11,873,524)	-11.5%
25	2/16/2013	\$71,002,438	\$66,679,947	\$4,322,491	6.5%	\$19,295,197	\$19,588,615	(\$293,418)	-1.5%	\$90,297,635	\$86,268,562	\$4,029,073	4.7%
26	2/23/2013	\$71,203,934	\$64,868,899	\$6,335,035	9.8%	\$19,729,989	\$19,965,388	(\$235,399)	-1.2%	\$90,933,923	\$84,834,287	\$6,099,636	7.2%
27	3/2/2013		\$67,135,065				\$20,947,181				\$88,082,246		
28	3/9/2013		\$68,299,006				\$22,152,639				\$90,451,645		
29	3/16/2013		\$65,013,692				\$23,351,718				\$88,365,410		
30	3/23/2013		\$64,035,255				\$27,416,609				\$91,451,864		
31	3/30/2013		\$65,135,991				\$84,628,987				\$149,764,978		
32	4/6/2013		\$66,860,957				\$19,899,400				\$86,760,357		
33	4/13/2013		\$64,028,898				\$20,220,141				\$84,249,039		
34	4/20/2013		\$63,623,892				\$20,974,282				\$84,598,174		
35	4/27/2013		\$61,743,623				\$20,267,388				\$82,011,011		
36	5/4/2013		\$64,851,962				\$20,642,982				\$85,494,944		
37	5/11/2013		\$65,472,556				\$19,140,768				\$84,613,324		
38	5/18/2013		\$60,572,658				\$18,342,814				\$78,915,472		
39	5/25/2013		\$58,959,028				\$18,618,060				\$77,577,088		
40	6/1/2013		\$57,409,086				\$19,014,645				\$76,423,731		
41	6/8/2013		\$59,845,545				\$20,527,958				\$80,373,503		
42	6/15/2013		\$57,021,498				\$19,386,186				\$76,407,684		

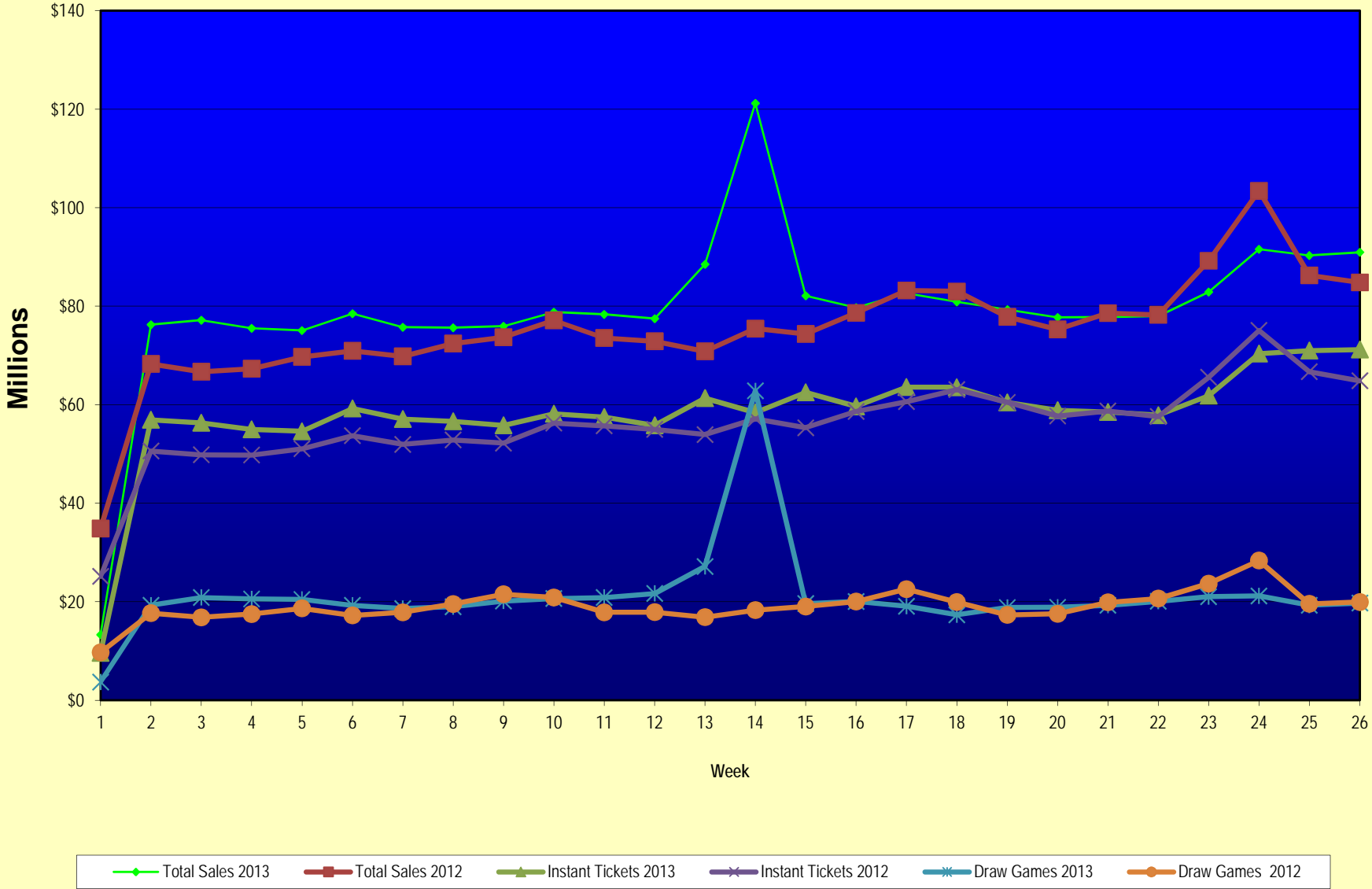
Note: Week 1 is not a full week of sales as this report is prepared on a Fiscal Year basis.

Texas Lottery Commission
Fiscal Year Over Year Change in Sales
Unaudited
FY 2013 Compared to FY 2012

Week	FY 2013 Week Ending	INSTANT TICKETS				DRAW GAMES				TOTAL SALES			
		FY 2013	FY 2012	Difference	% change - Cumulative Sales	FY 2013	FY 2012	Difference	% change - Cumulative Sales	FY 2013	FY 2012	Difference	% change - Cumulative Sales
43	6/22/2013		\$57,892,076				\$17,594,154				\$75,486,230		
44	6/29/2013		\$57,497,435				\$18,153,658				\$75,651,093		
45	7/6/2013		\$60,345,000				\$19,059,152				\$79,404,152		
46	7/13/2013		\$57,683,321				\$18,751,043				\$76,434,364		
47	7/20/2013		\$57,083,343				\$18,769,201				\$75,852,544		
48	7/27/2013		\$54,006,781				\$18,934,103				\$72,940,884		
49	8/3/2013		\$56,557,409				\$20,206,705				\$76,764,114		
50	8/10/2013		\$57,799,452				\$22,832,120				\$80,631,572		
51	8/17/2013		\$54,845,724				\$25,435,624				\$80,281,348		
52	8/24/2013		\$55,661,277				\$17,524,474				\$73,185,751		
	8/31/2013		\$47,363,984				\$14,929,528				\$62,293,512		
Total thru Current Week		\$1,511,707,179	\$1,459,396,840	\$52,310,339	3.6%	\$549,532,352	\$496,953,046	\$52,579,306	10.6%	\$2,061,239,531	\$1,956,349,886	\$104,889,645	5.4%
Fiscal Year Total		\$1,511,707,179	\$3,086,141,354			\$549,532,352	\$1,104,674,559			\$2,061,239,531	\$4,190,815,913		

** FY 2012 includes 3 days; FY 2013 includes 1 day.

Texas Lottery Commission Fiscal Year Over Year Change in Sales



Note: Week 1 is not a full week of sales as this report is prepared on a Fiscal Year basis.

Texas Lottery Commission
Instant Tickets by Price Point
Sales, Prize Expense, Sales Contribution and Payout Percentage With Year Over Year Changes
Unaudited

Fiscal Year	Price Point	# of Active Games	FY Sales	% of Instant Ticket Sales	Year over Year Change in Sales	FY Prize Expense	Year over Year Change in Prize Expense	FY Sales Contribution	Year over Year Change in Contribution	Average Prize Payout %	Year over Year Change in Payout %
2012	\$1.00	29	109,882,588	7.5%		67,200,970		42,681,618		61.2%	0.7%
thru	\$2.00	30	198,439,350	13.6%		129,017,968		69,421,382		65.0%	-0.8%
2/25/2012	\$3.00	16	178,571,502	12.2%		117,086,304		61,485,198		65.6%	0.0%
	\$5.00	38	464,537,830	31.8%		316,075,228		148,462,602		68.0%	0.2%
	\$7.00	4	18,191,880	1.2%		12,370,361		5,821,519		68.0%	0.0%
	\$10.00	16	234,378,920	16.1%		165,176,769		69,202,151		70.5%	-0.8%
	\$20.00	6	197,536,720	13.5%		147,399,421		50,137,299		74.6%	0.0%
	\$50.00	2	57,858,050	4.0%		44,931,814		12,926,236		77.7%	0.0%
Total		141	\$1,459,396,840			\$999,258,834		\$460,138,006		68.5%	0.0%
2013	\$1.00	28	94,109,382	6.2%		57,789,634		36,319,748		61.4%	1.3%
thru	\$2.00	31	197,492,264	13.1%		128,384,136		69,108,128		65.0%	-0.1%
2/23/2013	\$3.00	18	186,022,104	12.3%		121,953,647		64,068,457		65.6%	0.0%
	\$5.00	48	464,183,030	30.7%		315,442,330		148,740,700		68.0%	-0.1%
	\$7.00	2	16,242,919	1.1%		11,039,764		5,203,155		68.0%	0.0%
	\$10.00	12	269,111,870	17.8%		190,711,793		78,400,077		70.9%	0.0%
	\$20.00	8	213,204,960	14.1%		159,611,985		53,592,975		74.9%	0.1%
	\$50.00	3	71,340,650	4.7%		55,387,770		15,952,880		77.6%	0.0%
Total		150	\$1,511,707,179			\$1,040,321,059		\$471,386,120		68.8%	0.3%
Variance	\$1.00	-1	-15,773,206		-14.4%	-9,411,336	-14.0%	-6,361,870	-14.9%	0.25%	
2013 to	\$2.00	1	-947,086		-0.5%	-633,832	-0.5%	-313,254	-0.5%	-0.01%	
2012	\$3.00	2	7,450,602		4.2%	4,867,343	4.2%	2,583,259	4.2%	-0.01%	
	\$5.00	10	-354,800		-0.1%	-632,898	-0.2%	278,098	0.2%	-0.08%	
	\$7.00	-2	-1,948,961		-10.7%	-1,330,597	-10.8%	-618,364	-10.6%	-0.03%	
	\$10.00	-4	34,732,950		14.8%	25,535,024	15.5%	9,197,926	13.3%	0.39%	
	\$20.00	2	15,668,240		7.9%	12,212,564	8.3%	3,455,676	6.9%	0.24%	
	\$50.00	1	13,482,600		23.3%	10,455,957	23.3%	3,026,643	23.4%	-0.02%	
Total		9	\$52,310,339		3.6%	\$41,062,225	4.1%	\$11,248,114	2.4%	0.35%	

Notes - Instant Ticket Variances

Texas Lottery Commission
Instant Tickets by Price Point
Sales, Prize Expense, Sales Contribution and Payout Percentage With Year Over Year Changes
 Unaudited

			FY 2013		FY 2012	Difference
Sales	\$1 - \$7	1	\$958,049,699		\$969,623,150	-\$11,573,451
Prize Exp.	\$1 - \$7	1	\$634,609,511		\$641,750,830	-\$7,141,319
Sales Cont.	\$1 - \$7	1	\$323,440,188		\$327,872,320	-\$4,432,132
Prize Exp. %	\$1 - \$7	1	66.2%		66.2%	0.1%
			FY 2013		FY 2012	Difference
Sales	\$10 - \$50	2	\$553,657,480		\$489,773,690	\$63,883,790
Prize Exp.	\$10 - \$50	2	\$405,711,548		\$357,508,003	\$48,203,545
Sales Cont.	\$10 - \$50	1	\$147,945,932		\$132,265,687	\$15,680,245
Prize Exp. %	\$10 - \$50	2	73.3%		73.0%	0.3%
			FY 2013		FY 2012	Difference
Sales	Instant		\$1,511,707,179		\$1,459,396,840	\$52,310,339
Prize Exp.	Instant		\$1,040,321,059		\$999,258,834	\$41,062,225
Sales Cont.	Instant		\$471,386,120		\$460,138,006	\$11,248,114
Prize Exp. %	Instant		68.8%		68.5%	0.3%

			FY 2013		FY 2012	Difference
Sales	\$1 - \$10		\$1,227,161,569		\$1,204,002,070	\$23,159,499
Prize Exp.	\$1 - \$10		\$825,321,304		\$806,927,599	\$18,393,705
Sales Cont.	\$1 - \$10		\$401,840,265		\$397,074,471	\$4,765,794
Prize Exp. %	\$1 - \$10		67.3%		67.0%	0.2%
			FY 2013		FY 2012	Difference
Sales	\$20 - \$50		\$284,545,610		\$255,394,770	\$29,150,840
Prize Exp.	\$20 - \$50		\$214,999,755		\$192,331,235	\$22,668,520
Sales Cont.	\$20 - \$50		\$69,545,855		\$63,063,535	\$6,482,320
Prize Exp. %	\$20 - \$50		75.6%		75.3%	0.3%
			FY 2013		FY 2012	Difference
Sales	Instant		\$1,511,707,179		\$1,459,396,840	\$52,310,339
Prize Exp.	Instant		\$1,040,321,059		\$999,258,834	\$41,062,225
Sales Cont.	Instant		\$471,386,120		\$460,138,006	\$11,248,114
Prize Exp. %	Instant		68.8%		68.5%	0.3%

Texas Lottery Commission
Weekly Sales Summary
& Comparison to Previous Week
 Unaudited

	Week Ending 02/23/2013	% of Sales	Week Ending 02/16/2013	% of Sales	\$ change	% change
	<u>THIS WEEK</u>		<u>LAST WEEK</u>			
Total Sales	<u>\$90,933,923</u>		<u>\$90,297,635</u>		<u>\$636,289</u>	0.70%
Instant Tickets	<u>\$71,203,934</u>	78.3%	<u>\$71,002,438</u>	78.6%	<u>\$201,496</u>	0.28%
Lotto	\$2,716,839	3.0%	\$2,910,257	3.2%	-\$193,418	-6.65%
Pick 3	\$5,343,246	5.9%	\$5,397,708	6.0%	-\$54,463	-1.01%
Pick 3 Sum It Up	\$99,957	0.1%	\$99,470	0.1%	\$487	0.49%
Cash Five	\$1,083,596	1.2%	\$1,091,337	1.2%	-\$7,741	-0.71%
Texas Two Step	\$1,849,824	2.0%	\$1,430,815	1.6%	\$419,009	29.28%
Mega Millions	\$1,759,469	1.9%	\$1,770,362	2.0%	-\$10,893	-0.62%
Megaplier	\$429,347	0.5%	\$431,516	0.5%	-\$2,169	-0.50%
Daily 4	\$1,473,358	1.6%	\$1,502,480	1.7%	-\$29,122	-1.94%
Daily 4 Sum It Up	\$91,116	0.1%	\$92,250	0.1%	-\$1,134	-1.23%
Powerball	\$3,067,388	3.4%	\$2,752,192	3.0%	\$315,196	11.45%
Power Play	\$394,142	0.4%	\$366,358	0.4%	\$27,784	7.58%
All or Nothing	\$1,421,708	1.6%	\$1,450,452	1.6%	-\$28,744	-1.98%
Total Draw Game Sales	<u>\$19,729,989</u>		<u>\$19,295,197</u>		<u>\$434,793</u>	2.25%

* Totals may not sum due to rounding.

Texas Lottery Commission
Weekly Sales Summary
Unaudited

INSTANT TICKETS
TOP TEN SELLING GAMES

For the Week Ending: 02/23/13

Rank	Price Point	Game	Sales (Millions)
1	\$ 10	10X MEGA MONEY	\$ 6.338
2	\$ 20	CASH EXCITEMENT	\$ 4.155
3	\$ 5	FUN 5S	\$ 3.316
4	\$ 5	\$75,000 CASHWORD-O-RAMA	\$ 3.233
5	\$ 20	\$500 MILLION EXTREME CASH BLAST	\$ 2.534
6	\$ 50	\$7,500,000 FORTUNE	\$ 2.379
7	\$ 10	\$200 MILLION CASH SPECTACULAR	\$ 2.237
8	\$ 3	LOTERIA TEXAS	\$ 2.231
9	\$ 5	INSTANT RICHES	\$ 2.050
10	\$ 5	\$100,000 WINNINGS	\$ 1.963

Texas Lottery Commission
Prize Payout Tracking Report
Unaudited

Through Week Ending 02/23/13

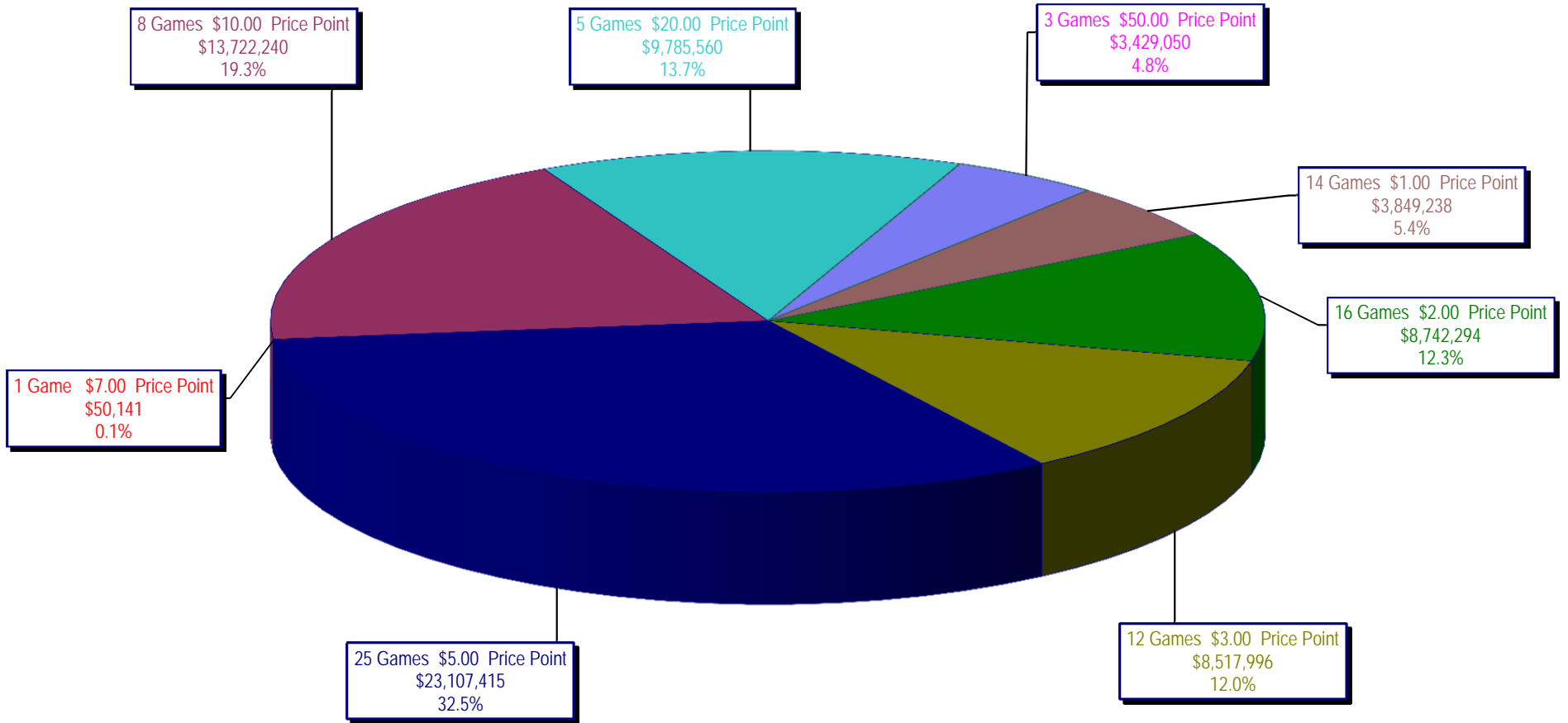
Draw Game Sales

		FY Sales Through Week Ending 2/23/2013		FY Prize Expense Through Week Ending 2/23/2013	Actual* Prize Payout	Base Payout (Prize Pool)
Lotto	\$	75,135,626	\$	54,030,720	71.91%	50.00%
Pick 3		128,966,207		65,563,370	50.84%	50.00%
Pick 3 Sum It Up		2,419,095		1,186,026	49.03%	50.00%
Cash Five		27,369,436		13,686,405	50.01%	50.00%
Texas Two Step		29,272,719		14,709,089	50.25%	50.00%
Mega Millions		50,414,363		24,591,162	48.78%	50.00%**
Megaplier		11,782,293		5,725,483	48.59%	N/A
Daily 4		34,401,601		17,813,375	51.78%	50.00%
Daily 4 Sum It Up		2,257,766		970,387	42.98%	50.00%
Powerball		131,228,361		68,970,000	52.56%	50.00%**
Power Play		13,495,124		7,679,775	56.91%	N/A
All or Nothing		42,789,762		25,179,438	58.84%	50.00%
Totals	\$	549,532,352	\$	300,105,230	54.61%	

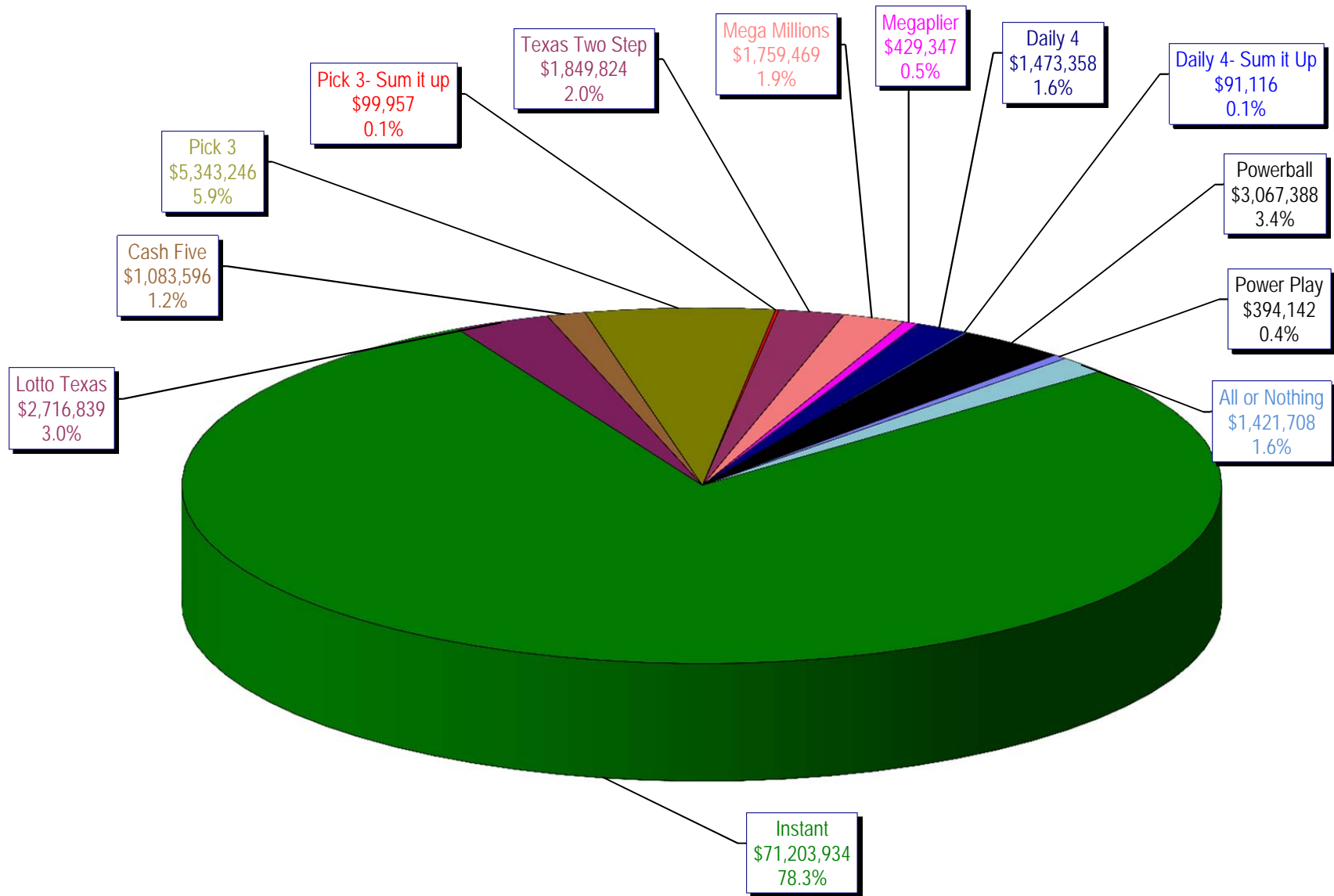
* Before Unclaimed Prizes

** Estimated; depends on # of guaranteed prizes won in Texas

Texas Lottery Commission
Instant Ticket Sales
For the Week Ending 02/23/13
(Unaudited)



**Texas Lottery Commission
All Game Sales
For the Week Ending 02/23/13
(Unaudited)**



Texas Lottery Commission - Weekly Sales Summary for FY 2013 (Unaudited)

Week Ended	Instant Games	New Games & Dates	Lotto Texas	Jackpot W	S	Pick 3	Pick 3 Sum It Up	Cash Five	Texas Two Step	Jackpot M	TH	Mega Millions	Jackpot T	F	Megaplier	Daily 4	Daily 4 Sum It Up	Powerball	Jackpot W	S	Power Play	All or Nothing	Total	Per Cap.
9/1/2012	56,975,312	1446 (\$1, N); 1444 (\$2, N) - 08/27/12	2,972,415	12	13	4,967,337	105,441	1,198,597	1,455,689	500	675	2,769,421	73	83	612,072	1,419,103	97,265	2,680,694	70	80	364,030		75,617,375	2.95
9/8/2012	56,941,761	1440 (\$2, N); 1458 (\$3, N); 1459 (\$5, N) - 09/03/12	3,005,564	14	15	5,112,132	106,959	1,185,494	1,179,003	875	200	3,140,536	93	105	665,392	1,412,279	99,861	3,002,910	90	100	395,287		76,247,178	2.97
9/15/2012	56,302,875	1452 (\$3, N) - 09/10/12	2,999,894	16	17	4,785,209	95,720	1,118,519	894,412	225	200	2,684,227	120	12	580,869	1,290,478	90,795	3,373,296	110	125	417,470	2,526,342	77,160,105	3.01
9/22/2012	54,974,438	1460 (\$1, N); 1461 (\$5, N) - 09/17/12	2,986,898	18	19	4,611,684	89,173	1,091,440	986,264	225	325	1,874,336	15	12	452,082	1,258,191	86,390	4,122,790	149	174	479,344	2,531,686	75,544,715	2.94
9/29/2012	54,606,674	1462 (\$2, N); 1472 (\$10, N) - 09/24/12	3,047,519	20	21	4,708,250	90,752	1,077,739	1,313,257	475	625	1,884,366	14	21	452,334	1,278,847	87,211	3,779,359	200	40	445,091	2,297,966	75,069,364	2.92
10/6/2012	59,223,327	1464 (\$5, N) - 10/01/12	3,164,231	22	23	4,947,571	96,251	1,121,146	1,188,386	800	200	2,055,918	28	36	482,303	1,310,612	89,270	2,266,428	50	40	312,877	2,244,980	78,503,300	3.06
10/13/2012	57,075,606	1465 (\$1, N); 1466 (\$20, N) - 10/08/2012	3,133,742	24	25	4,793,793	89,663	1,074,687	865,146	225	200	2,163,099	45	53	492,614	1,261,858	84,585	2,241,120	50	60	309,684	2,128,476	75,714,073	2.95
10/20/2012	56,630,134	1467 (\$1, N); 1468 (\$5, N) - 10/15/12	3,172,820	26	27	4,959,071	88,413	1,074,980	970,100	225	325	1,984,966	61	12	466,730	1,296,602	84,868	2,447,518	70	80	328,436	2,124,439	75,629,077	2.95
10/27/2012	55,789,743	1469 (\$2, N); 1470 (\$10, N) - 10/22/2012	3,204,694	28	29	5,550,567	96,242	1,063,201	1,226,578	450	600	1,778,725	13	21	430,528	1,381,019	91,618	2,914,062	90	100	371,273	2,021,684	75,919,933	2.96
11/3/2012	58,142,777	1503 (\$5, N) - 10/29/2012	3,392,650	30	31	5,501,964	101,742	1,078,593	860,073	200	225	1,950,117	27	32	462,385	1,393,099	93,773	3,466,242	110	124	424,170	1,913,200	78,780,785	3.07
11/10/2012	57,484,804	1475 (\$1, N); 1476 (\$3, N) - 11/05/2012	3,061,999	32	4	5,468,924	100,767	1,083,928	837,666	200	200	1,783,099	12	13	430,343	1,402,194	94,451	4,246,246	143	168	491,538	1,861,718	78,347,676	3.05
11/17/2012	55,805,228	1477 (\$2, N); 1478 (\$5, N) - 11/12/2012	2,599,190	5	6	5,248,059	91,989	1,059,723	920,319	225	300	1,841,571	19	26	440,783	1,345,121	88,391	5,638,425	185	214	615,323	1,771,812	77,465,933	3.02
11/24/2012	61,331,977	1394 (\$50, N) - 11/19/2012	2,768,876	7	8	5,086,879	91,409	1,021,878	883,407	425	200	2,003,365	33	41	472,723	1,300,693	85,037	10,768,045	250	325	1,053,006	1,637,536	88,504,830	3.45
12/1/2012	58,420,598	0	3,304,053	9	10	5,123,778	97,511	1,086,916	925,805	225	275	2,358,380	49	12	533,175	1,319,684	92,240	43,264,700	550	40	2,894,606	1,797,096	121,218,541	4.72
12/8/2012	62,489,745	1479 (\$1, N); 1485 (\$5, N) - 12/03/12	2,971,837	11	12	5,374,747	101,479	1,129,990	1,359,739	425	575	1,861,503	13	20	445,171	1,391,477	94,879	2,832,293	50	40	362,145	1,704,896	82,119,900	3.20
12/15/2012	59,661,880	0	3,087,087	13	14	5,221,374	98,173	1,104,769	1,928,422	775	1,000	1,933,357	27	35	456,193	1,398,647	88,811	2,808,938	50	40	364,704	1,574,508	79,726,862	3.11
12/22/2012	63,556,886	1481 (\$1, N); 1482 (\$2, N); 1483 (\$5, N) - 12/17/12	3,076,409	15	16	5,170,946	94,116	1,108,894	1,415,548	1,250	200	1,774,922	12	12	431,471	1,385,861	87,012	2,658,349	50	40	349,278	1,531,847	82,641,539	3.22
12/29/2012	63,547,886	0	2,869,329	17	18	4,868,470	90,224	1,041,264	922,869	200	225	1,670,747	18	25	400,587	1,289,758	79,651	2,413,294	50	40	324,222	1,389,460	80,907,760	3.15
1/5/2013	60,452,721	1484 (\$5, N) - 12/31/12	2,962,822	19	20	5,157,831	97,210	1,098,429	1,363,512	350	500	1,865,613	30	39	443,570	1,396,145	87,787	2,524,666	50	60	339,142	1,496,322	79,285,768	3.09
1/12/2013	58,862,997	1386 (\$2, N); 1536 (\$10, N) - 01/07/2013	2,588,023	4	5	4,974,232	92,872	1,079,444	1,622,926	700	900	2,036,427	47	55	471,998	1,345,510	81,625	2,755,940	70	80	349,383	1,480,788	77,742,164	3.03
1/19/2013	58,494,057	01/14/2013; 1538 (\$3, N) - 01/17/2013;	2,670,967	6	7	5,115,846	99,182	1,069,099	906,490	200	225	2,214,850	62	70	498,541	1,374,543	87,921	3,323,356	90	100	408,226	1,488,984	77,752,061	3.03
1/26/2013	57,871,744	0	2,733,016	8	9	4,936,726	91,918	1,047,379	1,178,148	325	475	2,367,780	80	89	526,051	1,401,635	87,842	3,808,150	110	130	454,194	1,460,376	77,964,959	3.04
2/2/2013	61,846,715	1489 (\$2, N); 1486 (\$20, N) - 01/28/2013	2,754,143	10	11	5,220,197	96,971	1,066,170	1,109,445	650	200	1,731,470	12	13	423,745	1,460,770	96,289	5,037,974	151	176	570,151	1,465,010	82,879,050	3.23
2/9/2013	70,374,906	1510 (\$5, N) - 2/4/13; 1537 (\$3, N) - 2/5/13	2,893,143	12	13	5,374,541	101,660	1,110,298	1,053,776	225	325	1,785,080	19	12	435,112	1,483,017	96,782	4,830,224	208	40	551,530	1,468,476	91,558,544	3.57
2/16/2013	71,002,438	1451 (\$3, N); 1453 (\$5, N) - 2/11/13	2,910,257	14	15	5,397,708	99,470	1,091,337	1,430,815	475	650	1,770,362	13	20	431,516	1,502,480	92,250	2,752,192	50	60	366,358	1,450,452	90,297,635	3.52
2/23/2013	71,203,934	1496 (\$1, N); 1399 (\$2, N); 1495 (\$5, N) - 2/18/13; 1450 (\$2, N) - 2/22/13	2,716,839	16	4	5,343,246	99,957	1,083,596	1,849,824	850	1,100	1,759,469	26	12	429,347	1,473,358	91,116	3,067,388	70	80	394,142	1,421,708	90,933,923	3.54
weekly change	0.3%		-6.6%			-1.0%	0.5%	-0.7%	29.3%			-0.6%			-0.5%	-1.9%	-1.2%	11.5%			7.6%	-2.0%	0.7%	
	SALES		SALES			SALES	SALES	SALES	SALES			SALES			SALES	SALES	SALES	SALES			SALES	SALES	SALES	% of Sales
Calendar Year to date	3,645,109,991		185,881,463			314,448,815	6,308,029	71,437,555	73,752,541			208,538,805			41,291,641	82,042,285	5,612,592	261,691,453			30,493,223	42,789,762	4,969,398,153	100.0%
Fiscal Year to date 2013	1,511,707,179		75,135,626			128,966,207	2,419,095	27,369,436	29,272,719			50,414,363			11,782,293	34,401,601	2,257,766	131,228,361			13,495,124	42,789,762	2,061,239,531	100.0%