



WEEKLY SALES SUMMARY

Unaudited

[Week Ending: 02/25/2012](#)

Texas Lottery Commission
Fiscal Year to Date Sales Comparison
Unaudited

Through the week ending 02/25/12 (26 weeks)

Sales by Game	FY 2010 *	FY 2011 **	FY 2012	\$ Change		% Change	
				FY 2012 to FY 2010	FY 2012 to FY 2011 to	FY 2012 to FY 2010	FY 2012 to FY 2011
Instants	\$ 1,375,999,311	\$ 1,381,893,447	\$ 1,459,396,840	\$ 83,397,529	\$ 77,503,393	6.1%	5.6%
Lotto Texas	132,284,359	85,661,141	85,376,749	-46,907,610	-284,392	-35.5%	-0.3%
Pick 3	132,926,441	134,531,228	130,894,685	-2,031,756	-3,636,543	-1.5%	-2.7%
Pick 3 Sum It Up	2,634,996	2,722,755	2,682,072	47,077	-40,683	1.8%	-1.5%
Cash Five	33,278,086	31,758,394	31,857,196	-1,420,890	98,802	-4.3%	0.3%
Texas Two Step	22,137,477	23,343,838	31,198,718	9,061,241	7,854,880	40.9%	33.6%
Mega Millions	92,697,689	92,442,441	73,527,447	-19,170,242	-18,914,994	-20.7%	-20.5%
Megaplier	20,723,237	18,948,720	16,317,890	-4,405,347	-2,630,830	-21.3%	-13.9%
Daily 4	25,754,596	27,917,174	30,963,466	5,208,870	3,046,293	20.2%	10.9%
Daily 4 Sum It Up	2,438,870	2,183,351	2,282,337	-156,533	98,987	-6.4%	4.5%
Powerball	7,026,473	43,218,421	77,333,468	70,306,995	34,115,047	-	78.9%
Power Play	1,669,838	10,292,168	14,519,019	12,849,181	4,226,851	-	41.1%
Total	\$ 1,849,571,371	\$ 1,854,913,077	\$ 1,956,349,886	\$ 106,778,515	\$ 101,436,809	5.8%	5.5%

* 2 extra days

** 1 extra day

Texas Lottery Commission
Fiscal Year to Date Cumulative Average Sales Comparison
Unaudited

Through the week ending 02/25/2012 (26 weeks)

Sales by Game	FY 2010	FY 2011	FY 2012
Instant	\$ 7,644,441	\$ 7,720,075	\$ 8,198,859
Lotto Texas	734,913	478,554	479,645
Pick 3	738,480	751,571	735,363
Pick 3 Sum It Up	14,639	15,211	15,068
Cash Five	184,878	177,421	178,973
Texas Two Step	122,986	130,413	175,274
Mega Millions	514,987	516,438	413,076
Megaplier	115,129	105,859	91,674
Daily 4	143,081	155,962	173,952
Daily 4 Sum It Up	13,549	12,197	12,822
Powerball	250,945 *	241,444	434,458
Power Play	59,637 *	57,498	81,568
Total	\$ 10,537,666	\$ 10,362,643	\$ 10,990,730

thru 02/27/2010

thru 02/26/2011

thru 02/25/2012

180 days

179 days

178 days

* 28 days

Texas Lottery Commission
Fiscal Year Over Year Change in Sales
Unaudited
FY 2012 Compared to FY 2011

Week	FY 2012 Week Ending	INSTANT TICKETS				ON-LINE GAMES				TOTAL SALES			
		FY 2012	FY 2011	Difference	% change - Cumulative Sales	FY 2012	FY 2011	Difference	% change - Cumulative Sales	FY 2012	FY 2011	Difference	% change - Cumulative Sales
1	9/3/2011**	\$25,147,181	\$31,659,033	(\$6,511,852)	-20.6%	\$9,704,561	\$11,430,717	(\$1,726,156)	-15.1%	\$34,851,742	\$43,089,750	(\$8,238,008)	-19.1%
2	9/10/2011	\$50,591,068	\$48,912,598	\$1,678,470	3.4%	\$17,681,853	\$16,398,160	\$1,283,693	7.8%	\$68,272,921	\$65,310,758	\$2,962,163	4.5%
3	9/17/2011	\$49,835,063	\$48,988,241	\$846,822	1.7%	\$16,842,326	\$17,166,827	(\$324,501)	-1.9%	\$66,677,389	\$66,155,068	\$522,321	0.8%
4	9/24/2011	\$49,777,138	\$48,471,310	\$1,305,828	2.7%	\$17,504,800	\$15,623,813	\$1,880,987	12.0%	\$67,281,938	\$64,095,123	\$3,186,815	5.0%
5	10/1/2011	\$51,040,274	\$50,145,138	\$895,136	1.8%	\$18,653,100	\$16,453,939	\$2,199,161	13.4%	\$69,693,374	\$66,599,077	\$3,094,297	4.6%
6	10/8/2011	\$53,715,157	\$50,918,591	\$2,796,566	5.5%	\$17,225,680	\$16,974,963	\$250,717	1.5%	\$70,940,837	\$67,893,554	\$3,047,283	4.5%
7	10/15/2011	\$51,942,121	\$49,096,011	\$2,846,110	5.8%	\$17,854,980	\$16,661,904	\$1,193,077	7.2%	\$69,797,101	\$65,757,915	\$4,039,187	6.1%
8	10/22/2011	\$52,837,769	\$50,158,946	\$2,678,823	5.3%	\$19,558,519	\$17,374,460	\$2,184,060	12.6%	\$72,396,288	\$67,533,406	\$4,862,883	7.2%
9	10/29/2011	\$52,206,644	\$49,775,287	\$2,431,357	4.9%	\$21,504,565	\$18,402,209	\$3,102,356	16.9%	\$73,711,209	\$68,177,496	\$5,533,713	8.1%
10	11/5/2011	\$56,265,310	\$53,337,848	\$2,927,462	5.5%	\$20,870,086	\$17,321,908	\$3,548,179	20.5%	\$77,135,396	\$70,659,756	\$6,475,641	9.2%
11	11/12/2011	\$55,682,645	\$52,285,479	\$3,397,166	6.5%	\$17,862,404	\$16,388,690	\$1,473,714	9.0%	\$73,545,049	\$68,674,169	\$4,870,880	7.1%
12	11/19/2011	\$54,978,079	\$52,424,036	\$2,554,043	4.9%	\$17,879,985	\$16,138,022	\$1,741,963	10.8%	\$72,858,064	\$68,562,058	\$4,296,006	6.3%
13	11/26/2011	\$53,942,448	\$51,262,518	\$2,679,930	5.2%	\$16,877,145	\$15,967,075	\$910,070	5.7%	\$70,819,593	\$67,229,593	\$3,590,000	5.3%
14	12/3/2011	\$57,153,469	\$56,385,259	\$768,210	1.4%	\$18,298,636	\$17,553,175	\$745,461	4.2%	\$75,452,105	\$73,938,434	\$1,513,671	2.0%
15	12/10/2011	\$55,318,284	\$56,540,048	(\$1,221,764)	-2.2%	\$19,033,326	\$17,703,352	\$1,329,975	7.5%	\$74,351,610	\$74,243,400	\$108,211	0.1%
16	12/17/2011	\$58,612,629	\$57,699,991	\$912,638	1.6%	\$20,045,279	\$18,465,282	\$1,579,997	8.6%	\$78,657,908	\$76,165,273	\$2,492,635	3.3%
17	12/24/2011	\$60,628,256	\$59,800,480	\$827,776	1.4%	\$22,572,986	\$19,635,771	\$2,937,215	15.0%	\$83,201,242	\$79,436,251	\$3,764,991	4.7%
18	12/31/2011	\$63,065,007	\$61,423,121	\$1,641,886	2.7%	\$19,948,521	\$26,122,257	(\$6,173,736)	-23.6%	\$83,013,528	\$87,545,378	(\$4,531,850)	-5.2%
19	1/7/2012	\$60,479,896	\$60,976,653	(\$496,757)	-0.8%	\$17,331,888	\$33,521,570	(\$16,189,682)	-48.3%	\$77,811,784	\$94,498,223	(\$16,686,439)	-17.7%
20	1/14/2012	\$57,689,526	\$50,099,433	\$7,590,093	15.2%	\$17,568,732	\$17,114,637	\$454,096	2.7%	\$75,258,258	\$67,214,070	\$8,044,189	12.0%
21	1/21/2012	\$58,704,854	\$53,143,646	\$5,561,208	10.5%	\$19,886,540	\$18,091,208	\$1,795,332	9.9%	\$78,591,394	\$71,234,854	\$7,356,540	10.3%
22	1/28/2012	\$57,611,325	\$54,096,128	\$3,515,197	6.5%	\$20,641,697	\$17,446,156	\$3,195,542	18.3%	\$78,253,022	\$71,542,284	\$6,710,739	9.4%
23	2/4/2012	\$65,553,366	\$53,433,592	\$12,119,774	22.7%	\$23,689,855	\$17,388,581	\$6,301,274	36.2%	\$89,243,221	\$70,822,173	\$18,421,048	26.0%
24	2/11/2012	\$75,070,485	\$60,277,094	\$14,793,391	24.5%	\$28,361,583	\$18,233,038	\$10,128,545	55.6%	\$103,432,068	\$78,510,132	\$24,921,936	31.7%
25	2/18/2012	\$66,679,947	\$61,536,763	\$5,143,184	8.4%	\$19,588,615	\$19,387,518	\$201,097	1.0%	\$86,268,562	\$80,924,281	\$5,344,281	6.6%
26	2/25/2012	\$64,868,899	\$59,046,203	\$5,822,696	9.9%	\$19,965,388	\$20,054,404	(\$89,016)	-0.4%	\$84,834,287	\$79,100,607	\$5,733,680	7.2%
27	3/3/2012		\$60,537,060				\$19,478,807				\$80,015,867		
28	3/10/2012		\$59,997,361				\$19,601,658				\$79,599,019		
29	3/17/2012		\$57,835,554				\$21,189,563				\$79,025,117		
30	3/24/2012		\$57,911,940				\$29,729,651				\$87,641,591		
31	3/31/2012		\$60,407,139				\$19,519,264				\$79,926,403		
32	4/7/2012		\$60,704,285				\$19,455,317				\$80,159,602		
33	4/14/2012		\$57,663,398				\$17,866,867				\$75,530,265		
34	4/21/2012		\$56,740,216				\$17,429,326				\$74,169,542		
35	4/28/2012		\$58,042,011				\$17,104,548				\$75,146,559		
36	5/5/2012		\$66,509,159				\$17,744,833				\$84,253,992		
37	5/12/2012		\$53,769,716				\$17,783,942				\$71,553,658		
38	5/19/2012		\$53,704,228				\$18,623,882				\$72,328,110		
39	5/26/2012		\$52,310,134				\$19,115,921				\$71,426,055		
40	6/2/2012		\$53,256,725				\$18,462,603				\$71,719,328		
41	6/9/2012		\$54,293,614				\$17,213,019				\$71,506,633		
42	6/16/2012		\$52,688,230				\$17,534,413				\$70,222,643		

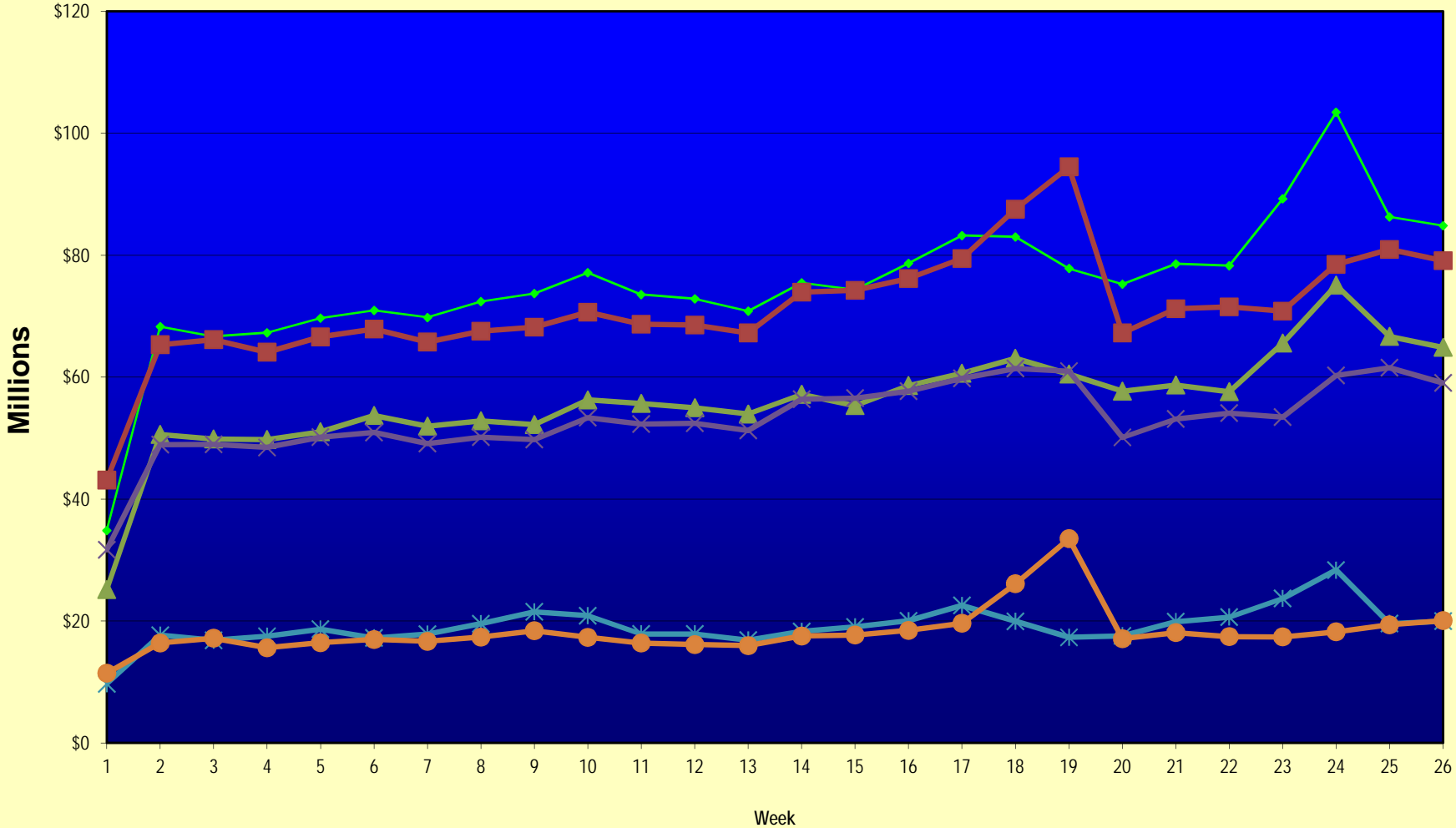
Note: Week 1 is not a full week of sales as this report is prepared on a Fiscal Year basis.

Texas Lottery Commission
Fiscal Year Over Year Change in Sales
Unaudited
FY 2012 Compared to FY 2011

Week	FY 2012 Week Ending	INSTANT TICKETS				ON-LINE GAMES				TOTAL SALES			
		FY 2012	FY 2011	Difference	% change - Cumulative Sales	FY 2012	FY 2011	Difference	% change - Cumulative Sales	FY 2012	FY 2011	Difference	% change - Cumulative Sales
43	6/23/2012		\$53,174,595				\$17,086,937				\$70,261,532		
44	6/30/2012		\$53,687,509				\$18,406,785				\$72,094,294		
45	7/7/2012		\$53,054,685				\$16,211,989				\$69,266,674		
46	7/14/2012		\$51,161,290				\$16,945,733				\$68,107,023		
47	7/21/2012		\$50,807,750				\$17,362,213				\$68,169,963		
48	7/28/2012		\$51,277,179				\$18,870,764				\$70,147,943		
49	8/4/2012		\$53,320,489				\$20,922,034				\$74,242,523		
50	8/11/2012		\$50,914,022				\$19,467,124				\$70,381,146		
51	8/18/2012		\$49,905,898				\$17,419,045				\$67,324,943		
52	8/25/2012		\$49,424,242				\$16,837,474				\$66,261,716		
	8/31/2012		\$27,274,804				\$8,600,118				\$35,874,922		
Total thru Current Week		\$1,459,396,840	\$1,381,893,447	\$77,503,393	5.6%	\$496,953,046	\$473,019,630	\$23,933,416	5.1%	\$1,956,349,886	\$1,854,913,077	\$101,436,809	5.5%
Fiscal Year Total		\$1,459,396,840	\$2,842,266,680			\$496,953,046	\$969,003,455			\$1,956,349,886	\$3,811,270,135		

** FY 2011 includes 4 days; FY 2012 includes 3 days

Texas Lottery Commission Fiscal Year Over Year Change in Sales



◆ Total Sales 2012
 ■ Total Sales 2011
 ▲ Instant Tickets 2012
 × Instant Tickets 2011
 ✱ On-Line Games 2012
 ● On-Line Games 2011

Note: Week 1 is not a full week of sales as this report is prepared on a Fiscal Year basis.

Texas Lottery Commission
Instant Tickets by Price Point
Sales, Prize Expense, Sales Contribution and Payout Percentage With Year Over Year Changes
Unaudited

Fiscal Year	Price Point	# of Active Games	FY Sales	% of Instant Ticket Sales	Year over Year Change in Sales	FY Prize Expense	Year over Year Change in Prize Expense	FY Sales Contribution	Year over Year Change in Contribution	Average Prize Payout %	Year over Year Change in Payout %
2011	\$1.00	29	103,618,695	7.5%		63,603,187		40,015,508		61.4%	2.1%
thru	\$2.00	29	194,955,106	14.1%		127,760,225		67,194,881		65.5%	0.6%
2/26/2011	\$3.00	18	169,686,740	12.3%		111,313,765		58,372,975		65.6%	0.0%
	\$5.00	39	438,084,050	31.7%		297,977,028		140,107,022		68.0%	0.0%
	\$7.00	7	60,955,986	4.4%		41,439,455		19,516,531		68.0%	0.0%
	\$10.00	13	195,955,670	14.2%		138,881,137		57,074,533		70.9%	1.3%
	\$20.00	5	171,393,600	12.4%		127,166,025		44,227,575		74.2%	1.4%
	\$50.00	2	47,243,600	3.4%		36,683,921		10,559,679		77.6%	4.2%
Total		142	\$1,381,893,447			\$944,824,744		\$437,068,703		68.4%	0.9%
2012	\$1.00	29	109,882,588	7.5%		67,200,970		42,681,618		61.2%	0.7%
thru	\$2.00	30	198,439,350	13.6%		129,017,968		69,421,382		65.0%	-0.8%
2/25/2012	\$3.00	16	178,571,502	12.2%		117,086,304		61,485,198		65.6%	0.0%
	\$5.00	38	464,537,830	31.8%		316,075,228		148,462,602		68.0%	0.2%
	\$7.00	4	18,191,880	1.2%		12,370,361		5,821,519		68.0%	0.0%
	\$10.00	16	234,378,920	16.1%		165,176,769		69,202,151		70.5%	-0.8%
	\$20.00	6	197,536,720	13.5%		147,399,421		50,137,299		74.6%	0.0%
	\$50.00	2	57,858,050	4.0%		44,931,814		12,926,236		77.7%	0.0%
Total		141	\$1,459,396,840			\$999,258,834		\$460,138,006		68.5%	0.0%
Variance	\$1.00	0	6,263,893		6.0%	3,597,783	5.7%	2,666,110	6.7%	-0.22%	
2012 to	\$2.00	1	3,484,244		1.8%	1,257,743	1.0%	2,226,501	3.3%	-0.52%	
2011	\$3.00	-2	8,884,762		5.2%	5,772,539	5.2%	3,112,223	5.3%	-0.03%	
	\$5.00	-1	26,453,780		6.0%	18,098,200	6.1%	8,355,580	6.0%	0.02%	
	\$7.00	-3	-42,764,106		-70.2%	-29,069,094	-70.1%	-13,695,012	-70.2%	0.02%	
	\$10.00	3	38,423,250		19.6%	26,295,632	18.9%	12,127,618	21.2%	-0.40%	
	\$20.00	1	26,143,120		15.3%	20,233,396	15.9%	5,909,724	13.4%	0.42%	
	\$50.00	0	10,614,450		22.5%	8,247,892	22.5%	2,366,558	22.4%	0.01%	
Total		-1	\$77,503,393		5.6%	\$54,434,090	5.8%	\$23,069,303	5.3%	0.10%	

Notes - Instant Ticket Variances

Texas Lottery Commission
Instant Tickets by Price Point
Sales, Prize Expense, Sales Contribution and Payout Percentage With Year Over Year Changes
 Unaudited

			FY 2012		FY 2011	Difference
Sales	\$1 - \$7		\$969,623,150		\$967,300,577	\$2,322,573
Prize Exp.	\$1 - \$7		\$641,750,830		\$642,093,660	-\$342,830
Sales Cont.	\$1 - \$7		\$327,872,320		\$325,206,917	\$2,665,403
Prize Exp. %	\$1 - \$7		66.2%		66.4%	-0.2%
			FY 2012		FY 2011	Difference
Sales	\$10 - \$50		\$489,773,690		\$414,592,870	\$75,180,820
Prize Exp.	\$10 - \$50		\$357,508,003		\$302,731,083	\$54,776,920
Sales Cont.	\$10 - \$50		\$132,265,687		\$111,861,787	\$20,403,900
Prize Exp. %	\$10 - \$50		73.0%		73.0%	0.0%
			FY 2012		FY 2011	Difference
Sales	Instant		\$1,459,396,840		\$1,381,893,447	\$77,503,393
Prize Exp.	Instant		\$999,258,834		\$944,824,744	\$54,434,090
Sales Cont.	Instant		\$460,138,006		\$437,068,703	\$23,069,303
Prize Exp. %	Instant		68.5%		68.4%	0.1%

			FY 2012		FY 2011	Difference
Sales	\$1 - \$10		\$1,204,002,070		\$1,163,256,247	\$40,745,823
Prize Exp.	\$1 - \$10		\$806,927,599		\$780,974,797	\$25,952,802
Sales Cont.	\$1 - \$10		\$397,074,471		\$382,281,450	\$14,793,021
Prize Exp. %	\$1 - \$10		67.0%		67.1%	-0.1%
			FY 2012		FY 2011	Difference
Sales	\$20 - \$50		\$255,394,770		\$218,637,200	\$36,757,570
Prize Exp.	\$20 - \$50		\$192,331,235		\$163,849,947	\$28,481,288
Sales Cont.	\$20 - \$50		\$63,063,535		\$54,787,253	\$8,276,282
Prize Exp. %	\$20 - \$50		75.3%		74.9%	0.4%
			FY 2012		FY 2011	Difference
Sales	Instant		\$1,459,396,840		\$1,381,893,447	\$77,503,393
Prize Exp.	Instant		\$999,258,834		\$944,824,744	\$54,434,090
Sales Cont.	Instant		\$460,138,006		\$437,068,703	\$23,069,303
Prize Exp. %	Instant		68.5%		68.4%	0.1%

Texas Lottery Commission
Weekly Sales Summary
& Comparison to Previous Week
 Unaudited

	Week Ending 02/25/2012	% of Sales	Week Ending 02/18/2012	% of Sales	\$ change	% change
	<u>THIS WEEK</u>		<u>LAST WEEK</u>			
Total Sales	<u>\$84,834,287</u>		<u>\$86,268,562</u>		<u>-\$1,434,275</u>	-1.66%
Instant Tickets	<u>\$64,868,899</u>	76.5%	<u>\$66,679,947</u>	77.3%	<u>-\$1,811,048</u>	-2.72%
Lotto	\$3,046,687	3.6%	\$3,230,364	3.7%	-\$183,677	-5.69%
Pick 3	\$5,452,765	6.4%	\$5,467,216	6.3%	-\$14,451	-0.26%
Pick 3 Sum It Up	\$115,785	0.1%	\$114,573	0.1%	\$1,212	1.06%
Cash Five	\$1,312,655	1.5%	\$1,316,645	1.5%	-\$3,990	-0.30%
Texas Two Step	\$980,607	1.2%	\$955,165	1.1%	\$25,442	2.66%
Mega Millions	\$2,972,219	3.5%	\$2,625,022	3.0%	\$347,197	13.23%
Megaplier	\$659,936	0.8%	\$605,640	0.7%	\$54,296	8.97%
Daily 4	\$1,283,389	1.5%	\$1,294,454	1.5%	-\$11,065	-0.85%
Daily 4 Sum It Up	\$92,775	0.1%	\$95,383	0.1%	-\$2,609	-2.73%
Powerball	\$3,590,429	4.2%	\$3,310,544	3.8%	\$279,885	8.45%
Power Play	\$458,143	0.5%	\$573,610	0.7%	-\$115,467	-20.13%
Total Online Sales	<u>\$19,965,388</u>		<u>\$19,588,615</u>		<u>\$376,774</u>	1.92%

* Totals may not sum due to rounding.

Texas Lottery Commission
Weekly Sales Summary
Unaudited

INSTANT TICKETS
TOP TEN SELLING GAMES

For the Week Ending : 02/25/2012

Rank	Price Point	Game	Sales (Millions)
1	\$ 10	\$200 MILLION CASH SPECTACULAR	\$ 5.794
2	\$ 5	TRIPLE 7'S	\$ 3.353
3	\$ 20	MAXIMUM MILLIONS	\$ 3.040
4	\$ 20	\$500,000,000 FRENZY	\$ 2.766
5	\$ 5	\$100,000 RICHES	\$ 2.732
6	\$ 50	CASINO ACTION	\$ 2.710
7	\$ 10	BIG MONEY	\$ 2.590
8	\$ 3	3 TIMES LUCKY	\$ 2.188
9	\$ 3	BONUS CASHWORD	\$ 2.145
10	\$ 5	CHOCOLATE	\$ 2.095

Texas Lottery Commission
Prize Payout Tracking Report
Unaudited

Through Week Ending 02/25/2012

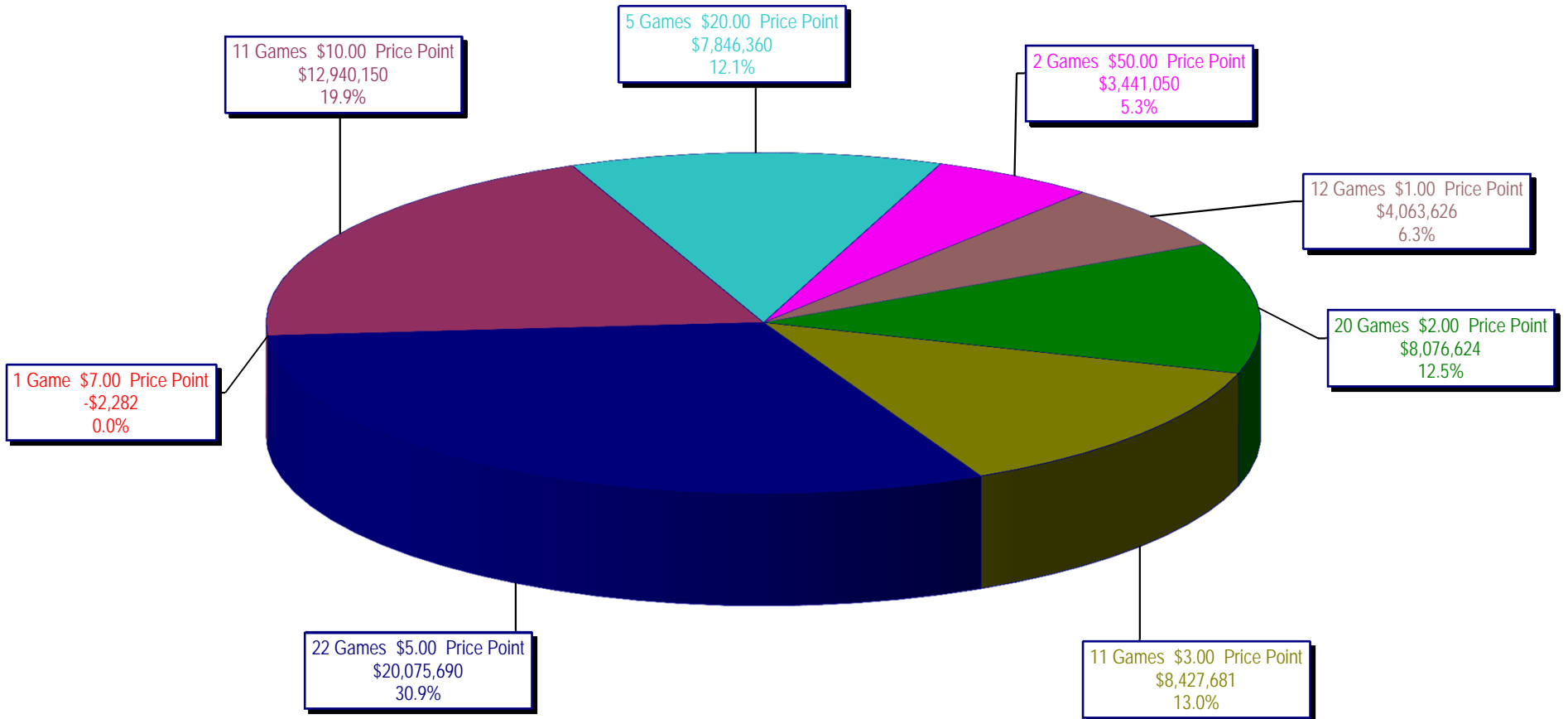
On-Line Sales

		FY Sales Through Week Ending 2/25/2012		FY Prize Expense Through Week Ending 2/25/2012	Actual* Prize Payout	Base Payout (Prize Pool)
Lotto	\$	85,376,749	\$	53,947,423	63.19%	50.00%
Pick 3		130,894,685		60,229,740	46.01%	50.00%
Pick 3 Sum It Up		2,682,072		1,255,217	46.80%	50.00%
Cash Five		31,857,196		16,586,520	52.07%	50.00%
Texas Two Step		31,198,718		15,637,554	50.12%	50.00%
Mega Millions		73,527,447		36,231,401	49.28%	50.00%**
Megaplier		16,317,890		8,354,139	51.20%	N/A
Daily 4		30,963,466		13,907,000	44.91%	50.00%
Daily 4 Sum It Up		2,282,337		956,393	41.90%	50.00%
Powerball		77,333,468		37,598,580	48.62%	50.00%**
Power Play		14,519,019		6,827,722	47.03%	N/A
Totals	\$	496,953,046	\$	251,531,688	50.61%	

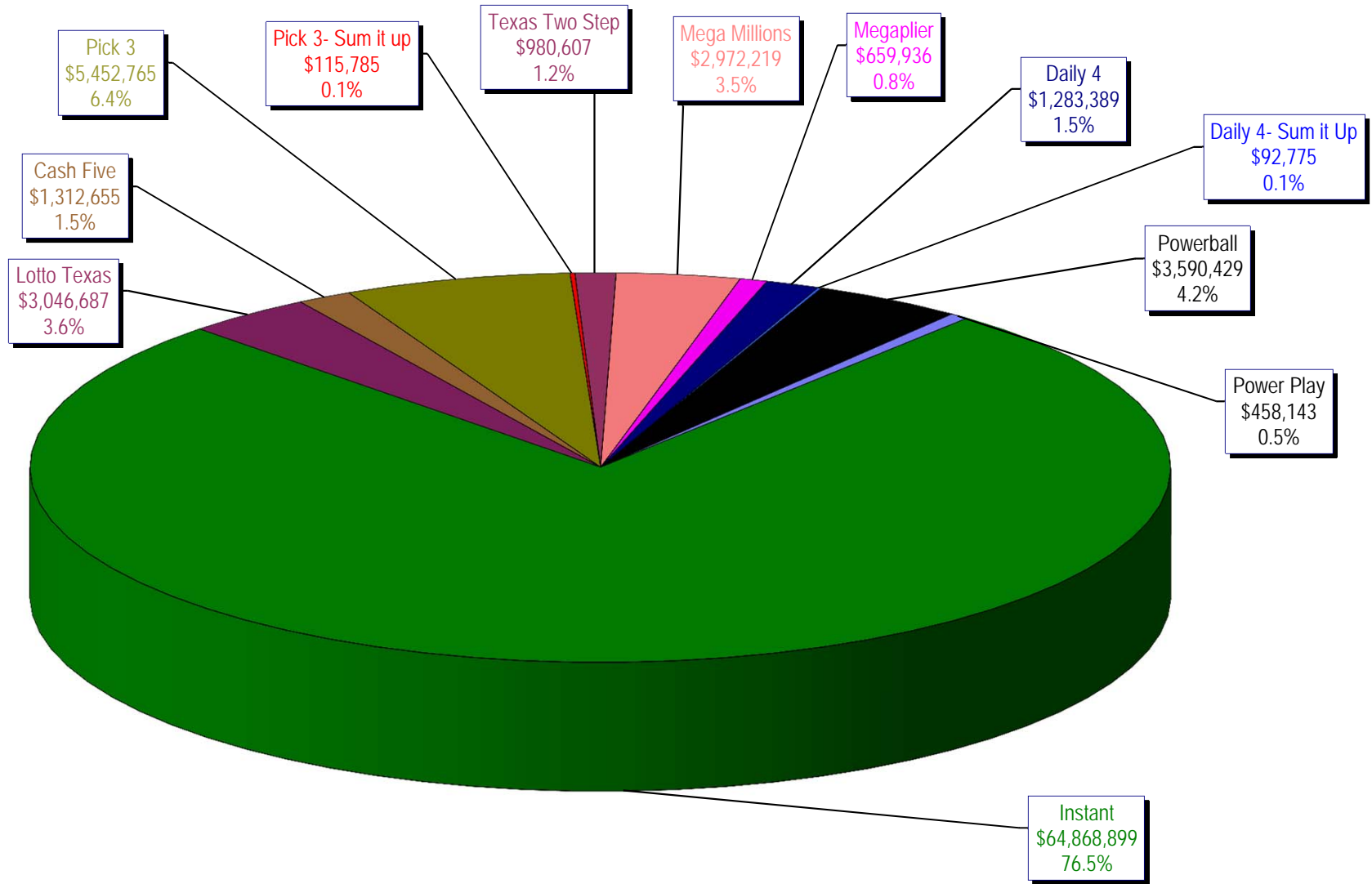
* Before Unclaimed Prizes

** Estimated; depends on # of guaranteed prizes won in Texas

Texas Lottery Commission
Instant Ticket Sales
For the Week Ending 02/25/12
(Unaudited)



**Texas Lottery Commission
All Game Sales
For the Week Ending 02/25/12
(Unaudited)**



Texas Lottery Commission - Weekly Sales Summary for FY 2012 (Unaudited)

Week Ended	Instant Games	New Games & Dates	Lotto Texas	Jackpot W	Jackpot S	Pick 3	Pick 3 Sum It Up	Cash Five	Texas Two Step	Jackpot M	Jackpot TH	Mega Millions	Jackpot T	Jackpot F	Megaplier	Daily 4	Daily 4 Sum It Up	Powerball	Jackpot W	Jackpot S	Power Play	Total	Per Cap.
9/3/2011	52,421,985	1340 (\$1,N); 1310 (\$2, N) - 08/29/11	3,710,974	23	24	5,228,940	100,997	1,239,134	989,988	225	300	2,248,664	21	29	539,246	1,221,178	93,318	2,401,555	75	91	530,686	70,726,664	2.81
9/10/2011	50,591,068	1360 (\$3, N) - 09/05/11	3,329,350	25	4	5,103,026	99,259	1,198,563	935,771	450	200	2,387,766	37	44	557,225	1,180,505	88,443	2,295,315	107	20	506,631	68,272,921	2.71
9/17/2011	49,835,063	0	3,031,798	5	6	4,953,079	100,990	1,210,562	961,592	225	300	2,801,526	54	65	626,459	1,125,230	83,532	1,560,522	25	20	387,037	66,677,389	2.64
9/24/2011	49,777,138	1362(\$1, N); 1363(\$5,N); 1364(\$5,N) - 09/19/11	3,083,973	7	8	4,819,453	97,999	1,200,444	1,283,472	450	600	3,206,022	75	86	692,909	1,092,294	82,198	1,561,655	25	30	384,383	67,281,938	2.67
10/1/2011	51,040,274	1365(\$2,N) - 09/26/11	3,196,730	9	10	4,846,896	97,026	1,215,715	1,146,613	800	200	4,033,330	96	113	830,660	1,096,271	83,993	1,693,809	37	47	412,058	69,693,374	2.76
10/8/2011	53,715,157	1366(\$1,N) - 10/03/11	3,231,892	11	12	5,064,771	102,919	1,252,733	1,004,251	225	300	2,176,684	12	14	527,777	1,188,636	92,825	2,103,034	58	71	480,159	70,940,837	2.81
10/15/2011	51,942,121	1367 (\$7, N) - 10/10/11	3,230,925	13	14	4,776,985	99,008	1,214,385	1,337,436	450	625	2,260,036	22	30	542,787	1,132,415	84,772	2,613,215	86	105	563,017	69,797,101	2.77
10/22/2011	52,837,769	1369 (\$1, N); 1370 (\$5, N) - 10/17/11	3,250,317	15	16	4,784,201	98,306	1,202,768	1,887,302	825	1,050	2,386,255	39	48	561,705	1,130,353	83,722	3,477,867	124	148	695,724	72,396,288	2.87
10/29/2011	52,206,644	1371 (\$2, N) - 10/24/11	3,302,201	17	18	4,685,786	95,887	1,186,987	2,055,399	1,300	1,550	2,592,752	57	67	596,631	1,107,441	82,921	4,895,300	173	203	903,261	73,711,209	2.92
11/5/2011	56,265,310	1373 (\$10, N) - 10/31/11	3,570,825	19	20	5,165,835	105,793	1,240,514	910,036	200	200	2,497,308	78	12	583,481	1,222,706	92,619	4,617,172	245	20	863,799	77,135,396	3.06
11/12/2011	55,682,645	1375 (\$3, N); 1374 (\$1, N) - 11/07/11	3,673,137	21	22	5,298,645	109,575	1,268,630	961,349	225	200	2,362,698	15	22	552,133	1,235,272	92,025	1,861,697	25	35	447,243	73,545,049	2.92
11/19/2011	54,978,079	1376(\$2, N); 1377 (\$5, N) - 11/14/11	3,575,231	23	24	5,216,095	106,956	1,246,366	1,059,355	225	325	2,300,050	30	40	550,825	1,224,365	89,978	2,033,222	46	60	477,542	72,858,064	2.89
11/26/2011	53,942,448	1372 (\$5, N) - 11/21/11	3,499,908	25	26	4,943,420	100,352	1,179,174	998,175	500	200	2,377,399	47	55	555,760	1,215,090	90,416	1,527,546	20	25	389,905	70,819,593	2.81
12/3/2011	57,153,469	0	3,744,456	27	28	5,267,602	108,544	1,264,649	938,225	225	200	2,830,996	64	75	636,924	1,278,857	95,379	1,708,763	31	40	424,242	75,452,105	2.99
12/10/2011	55,318,284	1378 (\$1, N); 1322 (\$5, N) - 12/5/11; 1389 (\$1, N) - 12/6/11	3,666,072	29	30	5,168,509	106,265	1,243,957	1,030,979	225	325	3,462,326	87	100	736,281	1,235,834	89,131	1,850,570	52	67	443,403	74,351,610	2.95
12/17/2011	58,612,629	1383 (\$3,N) - 12/12/11	2,963,151	4	5	5,096,413	103,606	1,257,263	1,339,991	475	650	4,412,520	116	135	882,759	1,240,640	89,229	2,163,468	78	91	496,239	78,657,908	3.12
12/24/2011	60,628,256	1379 (\$1, N); 1317 (\$2, N); 1380 (\$5, N) - 12/19/11	3,265,301	6	7	5,257,800	105,568	1,269,335	943,509	200	225	5,729,832	152	173	1,095,360	1,263,815	88,757	2,933,837	104	125	619,872	83,201,242	3.30
12/31/2011	63,065,007	0	3,368,593	8	9	5,211,663	107,395	1,275,257	1,200,536	325	450	4,358,985	206	12	878,865	1,244,035	88,079	1,788,226	20	25	426,888	83,013,528	3.29
1/7/2012	60,479,896	1381 (\$5,N); 1277 (\$50,N) - 1/3/12; 1429 (\$5,N); 1401 (\$10, N) - 1/4/12	3,193,532	10	11	5,246,112	108,060	1,281,653	1,135,472	625	200	2,298,815	15	25	550,191	1,240,736	90,116	1,763,484	30	44	423,718	77,811,784	3.09
1/14/2012	57,689,526	1382 (\$2,N); 1232 (\$10, N) - 1/9/12	3,259,338	12	13	5,061,130	103,687	1,270,289	1,059,875	225	350	2,542,675	33	42	587,013	1,229,792	87,637	1,921,683	54	66	445,614	75,258,258	2.98
1/21/2012	58,704,854	1384 (\$1,N); 1385 (\$5,N) - 1/16/12	3,310,397	14	15	5,033,947	104,874	1,252,621	1,422,729	500	650	2,696,266	50	60	594,142	1,204,955	88,136	3,611,989	80	100	566,485	78,591,394	3.12
1/28/2012	57,611,325	0	3,295,592	16	17	4,996,799	103,779	1,241,568	1,940,577	875	1,100	2,426,609	71	12	544,967	1,197,885	85,833	4,311,550	120	146	496,540	78,253,022	3.10
2/4/2012	65,553,366	1434 (\$2, N); 1142 (\$20, N) - 01/30/12	3,526,781	18	19	5,493,300	112,992	1,316,899	2,230,312	1,350	1,650	2,212,907	15	23	525,610	1,315,424	96,711	6,186,774	170	200	672,146	89,243,221	3.54
2/11/2012	75,070,485	1361 (\$5,N); 1362 (\$1, N); 1388 (\$3, N) - 02/06/12	3,569,296	20	21	5,678,360	119,455	1,321,397	983,011	200	225	2,388,865	32	41	562,554	1,332,218	97,927	10,633,290	250	325	1,675,211	103,432,068	4.10
2/18/2012	66,679,947	1433 (\$10, N) - 02/13/12	3,230,364	22	4	5,467,216	114,573	1,316,645	955,165	200	200	2,625,022	51	61	605,640	1,294,454	95,383	3,310,544	40	50	573,610	86,268,562	3.42
2/25/2012	64,868,899	1253 (\$2,N); 1431 (\$5,N) - 02/20/2012	3,046,687	5	6	5,452,765	115,785	1,312,655	980,607	225	200	2,972,219	72	83	659,936	1,283,389	92,775	3,590,429	60	70	458,143	84,834,287	3.36
weekly change	-2.7%		-5.7%			-0.3%	1.1%	-0.3%	2.7%			13.2%		9.0%	-0.9%	-2.7%		8.5%			-20.1%	-1.7%	
	SALES		SALES			SALES	SALES	SALES	SALES			SALES	SALES	SALES	SALES	SALES	SALES	SALES	SALES	SALES	SALES	% of Sales	
Startup to date	43,334,755,042		10,993,382,808			4,258,255,006	25,985,405	2,352,765,857	609,033,185			1,558,959,172			356,453,061	231,966,155	25,251,777	233,725,352			50,782,364	64,239,449,153	100.0%
Calendar Year to date	506,658,298		26,431,987			42,429,626	883,203	10,313,727	10,707,748			20,163,378			4,630,053	10,098,852	734,515	35,329,743			5,311,467	673,692,595	100.0%
Fiscal Year to date 2012	1,459,396,840		85,376,749			130,894,685	2,682,072	31,857,196	31,198,718			73,527,447			16,317,890	30,963,466	2,282,337	77,333,468			14,519,019	1,956,349,886	100.0%