



WEEKLY SALES SUMMARY

Unaudited

Week Ending: 02/28/2009

Texas Lottery Commission
Fiscal Year to Date Sales Comparison
Unaudited

Through the week ending 02/28/2009 (26 weeks)

Sales by Game	FY 2007 *	FY 2008 **	FY 2009	\$ Change		% Change	
				FY 2009 to FY 2007	FY 2009 to FY 2008	FY 2009 to FY 2007	FY 2009 to FY 2008
Instant	\$ 1,424,847,174	\$ 1,419,509,739	\$ 1,381,377,635	\$ -43,469,539	\$ -38,132,104	-3.1%	-2.7%
Lotto Texas	113,775,040	107,430,301	93,946,624	-19,828,416	-13,483,677	-17.4%	-12.6%
Pick 3	158,100,828	144,072,013	142,208,049	-15,892,779	-1,863,965	-10.1%	-1.3%
Pick 3 Sum It Up	-	2,966,159	3,008,670	3,008,670	42,512	-	1.4%
Cash 5	44,255,729	38,727,857	35,603,034	-8,652,695	-3,124,823	-19.6%	-8.1%
Texas Two Step	26,690,213	22,305,934	24,081,141	-2,609,072	1,775,207	-9.8%	8.0%
Mega Millions	87,445,234	86,412,661	91,316,866	3,871,632	4,904,205	4.4%	5.7%
Megaplier	20,396,948	20,345,848	21,237,319	840,371	891,471	4.1%	4.4%
Daily 4	-	21,108,934	21,883,217	21,883,217	774,284	-	3.7%
Daily 4 Sum It Up	-	5,094,554	2,739,777	2,739,777	-2,354,777	-	-46.2%
Total	\$ 1,875,511,166	\$ 1,867,973,999	\$ 1,817,402,331	\$ -58,108,835	\$ -50,571,668	-3.1%	-2.7%

* 3 extra days in 2007 ** 2 extra days in 2008

Texas Lottery Commission
Fiscal Year Over Year Change in Sales
Unaudited
FY 2009 Compared to FY 2008

Week	FY 2009 Week Ending	INSTANT TICKETS				ON-LINE GAMES				TOTAL SALES			
		FY 2009	FY 2008	Difference	% change - Cumulative Sales	FY 2009	FY 2008	Difference	% change - Cumulative Sales	FY 2009	FY 2008	Difference	% change - Cumulative Sales
1	9/6/2008**	\$44,890,104	\$62,376,229	(\$17,486,125)	-28.0%	\$14,722,011	\$19,372,224	(\$4,650,213)	-24.0%	\$59,612,115	\$81,748,453	(\$22,136,338)	-27.1%
2	9/13/2008	\$46,309,551	\$52,458,866	(\$6,149,315)	-20.6%	\$13,704,860	\$16,926,163	(\$3,221,303)	-21.7%	\$60,014,411	\$69,385,029	(\$9,370,618)	-20.8%
3	9/20/2008	\$42,923,171	\$49,998,934	(\$7,075,763)	-18.6%	\$12,291,263	\$15,792,283	(\$3,501,020)	-21.8%	\$55,214,434	\$65,791,217	(\$10,576,783)	-19.4%
4	9/27/2008	\$47,042,801	\$49,894,175	(\$2,851,374)	-15.6%	\$14,222,339	\$14,800,514	(\$578,175)	-17.9%	\$61,265,140	\$64,694,689	(\$3,429,549)	-16.2%
5	10/4/2008	\$50,747,162	\$53,486,863	(\$2,739,701)	-13.5%	\$15,784,472	\$16,618,430	(\$833,958)	-15.3%	\$66,531,634	\$70,105,293	(\$3,573,659)	-14.0%
6	10/11/2008	\$49,763,789	\$50,918,020	(\$1,154,231)	-11.7%	\$15,622,498	\$15,601,410	\$21,088	-12.9%	\$65,386,287	\$66,519,430	(\$1,133,143)	-12.0%
7	10/18/2008	\$49,299,053	\$50,532,253	(\$1,233,200)	-10.5%	\$15,167,940	\$15,682,666	(\$514,726)	-11.6%	\$64,466,993	\$66,214,919	(\$1,747,926)	-10.7%
8	10/25/2008	\$49,977,581	\$50,347,450	(\$369,869)	-9.3%	\$14,525,843	\$15,586,516	(\$1,060,673)	-11.0%	\$64,503,424	\$65,933,966	(\$1,430,542)	-9.7%
9	11/1/2008	\$50,346,542	\$53,953,733	(\$3,607,191)	-9.0%	\$14,838,845	\$16,775,983	(\$1,937,139)	-11.1%	\$65,185,387	\$70,729,716	(\$5,544,330)	-9.5%
10	11/8/2008	\$54,860,087	\$53,635,090	\$1,224,997	-7.9%	\$16,057,069	\$15,912,791	\$144,278	-9.9%	\$70,917,156	\$69,547,881	\$1,369,275	-8.3%
11	11/15/2008	\$53,484,812	\$51,254,401	\$2,230,411	-6.8%	\$15,829,819	\$15,797,076	\$32,744	-9.0%	\$69,314,631	\$67,051,477	\$2,263,155	-7.3%
12	11/22/2008	\$52,806,511	\$50,897,817	\$1,908,694	-5.9%	\$16,460,748	\$15,801,720	\$659,028	-7.9%	\$69,267,259	\$66,699,537	\$2,567,722	-6.4%
13	11/29/2008	\$52,199,741	\$53,913,115	(\$1,713,374)	-5.7%	\$17,397,576	\$17,055,505	\$342,072	-7.1%	\$69,597,317	\$70,968,620	(\$1,371,303)	-6.0%
14	12/6/2008	\$56,731,851	\$55,702,697	\$1,029,154	-5.1%	\$20,363,789	\$17,900,717	\$2,463,073	-5.5%	\$77,095,640	\$73,603,414	\$3,492,227	-5.2%
15	12/13/2008	\$54,109,617	\$53,703,516	\$406,101	-4.7%	\$22,952,228	\$17,820,841	\$5,131,387	-3.0%	\$77,061,845	\$71,524,357	\$5,537,488	-4.3%
16	12/20/2008	\$55,777,328	\$57,592,769	(\$1,815,441)	-4.6%	\$15,833,517	\$17,436,233	(\$1,602,716)	-3.4%	\$71,610,845	\$75,029,002	(\$3,418,157)	-4.3%
17	12/27/2008	\$57,597,885	\$57,696,003	(\$98,118)	-4.3%	\$15,851,771	\$14,743,680	\$1,108,091	-2.9%	\$73,449,656	\$72,439,683	\$1,009,973	-4.0%
18	1/3/2009	\$57,582,115	\$57,935,952	(\$353,837)	-4.1%	\$16,900,028	\$15,704,450	\$1,195,578	-2.3%	\$74,482,143	\$73,640,402	\$841,741	-3.7%
19	1/10/2009	\$54,250,945	\$55,360,542	(\$1,109,597)	-4.0%	\$16,203,220	\$15,691,540	\$511,680	-2.0%	\$70,454,165	\$71,052,082	(\$597,917)	-3.5%
20	1/17/2009	\$51,625,339	\$54,920,166	(\$3,294,827)	-4.1%	\$15,701,605	\$16,259,669	(\$558,064)	-2.1%	\$67,326,944	\$71,179,835	(\$3,852,891)	-3.6%
21	1/24/2009	\$52,789,573	\$54,439,890	(\$1,650,317)	-4.1%	\$15,897,473	\$16,691,724	(\$794,251)	-2.2%	\$68,687,046	\$71,131,614	(\$2,444,568)	-3.6%
22	1/31/2009	\$55,453,471	\$57,464,382	(\$2,010,911)	-4.0%	\$16,908,272	\$17,968,227	(\$1,059,955)	-2.4%	\$72,361,743	\$75,432,609	(\$3,070,866)	-3.7%
23	2/7/2009	\$62,247,711	\$60,715,019	\$1,532,692	-3.7%	\$18,354,314	\$20,097,338	(\$1,743,025)	-2.7%	\$80,602,025	\$80,812,357	(\$210,333)	-3.5%
24	2/14/2009	\$60,509,056	\$57,093,143	\$3,415,913	-3.3%	\$19,218,078	\$22,179,908	(\$2,961,831)	-3.3%	\$79,727,134	\$79,273,051	\$454,083	-3.3%
25	2/21/2009	\$59,194,623	\$57,627,047	\$1,567,576	-3.0%	\$21,098,199	\$27,230,539	(\$6,132,340)	-4.5%	\$80,292,822	\$84,857,586	(\$4,564,764)	-3.4%
26	2/28/2009	\$58,857,216	\$55,591,667	\$3,265,549	-2.7%	\$24,116,924	\$17,016,118	\$7,100,806	-2.8%	\$82,974,140	\$72,607,785	\$10,366,355	-2.7%
27	3/7/2009		\$56,837,481				\$16,690,193				\$73,527,674		
28	3/14/2009		\$54,587,112				\$16,448,165				\$71,035,277		
29	3/21/2009		\$53,098,937				\$16,639,184				\$69,738,121		
30	3/28/2009		\$53,933,689				\$17,698,625				\$71,632,314		
31	4/4/2009		\$57,598,982				\$17,665,411				\$75,264,393		
32	4/11/2009		\$53,954,185				\$15,860,784				\$69,814,969		
33	4/18/2009		\$53,946,736				\$16,452,676				\$70,399,412		
34	4/25/2009		\$51,533,006				\$16,873,949				\$68,406,955		
35	5/2/2009		\$53,250,568				\$18,202,103				\$71,452,671		
36	5/9/2009		\$54,060,849				\$18,422,562				\$72,483,411		
37	5/16/2009		\$54,010,641				\$20,728,360				\$74,739,001		
38	5/23/2009		\$50,377,032				\$15,461,384				\$65,838,416		
39	5/30/2009		\$49,545,080				\$15,175,370				\$64,720,450		
40	6/6/2009		\$53,702,986				\$15,982,166				\$69,685,152		

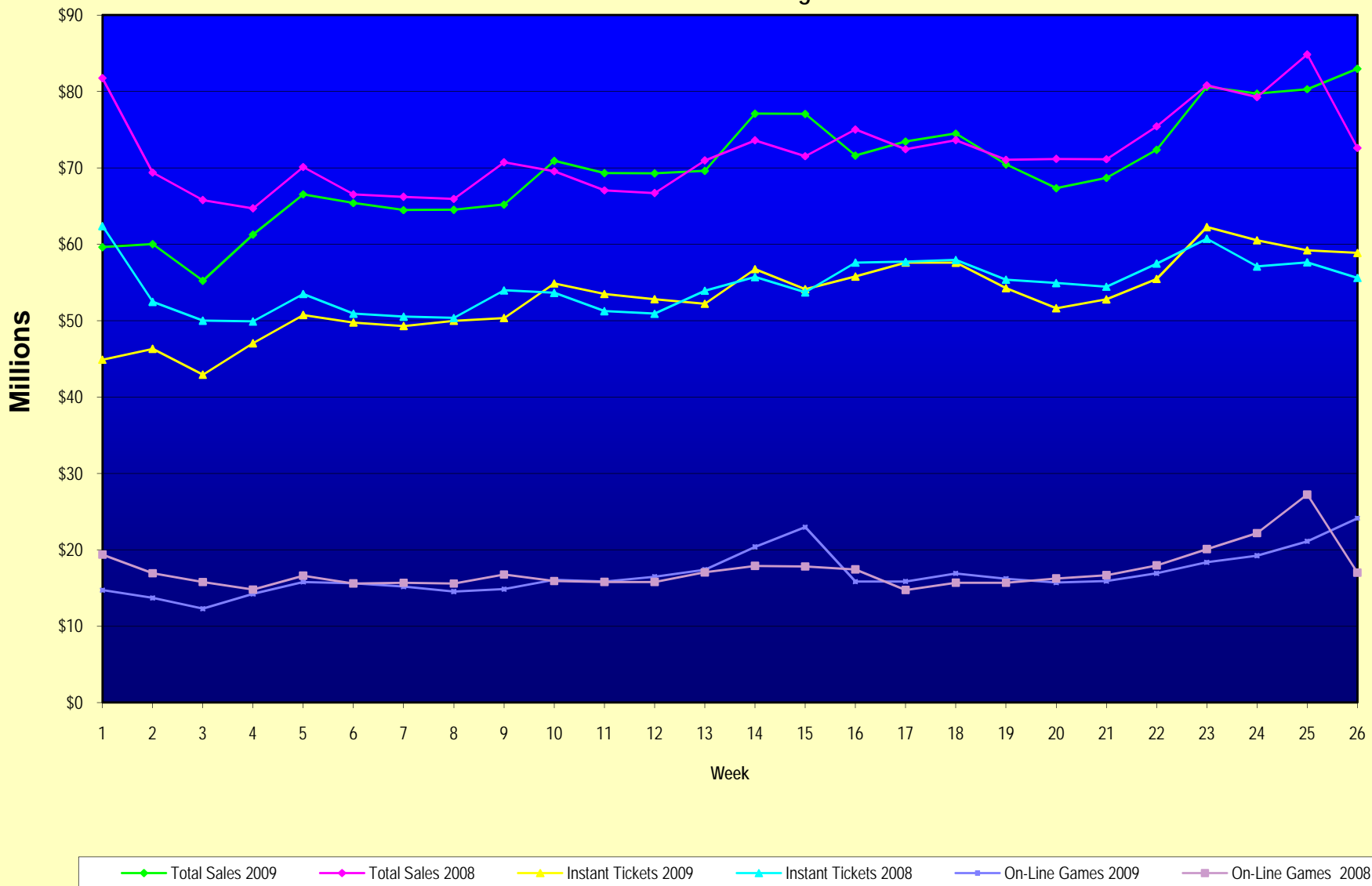
Note: Week 1 is not a full week of sales as this report is prepared on a Fiscal Year basis.

Texas Lottery Commission
Fiscal Year Over Year Change in Sales
Unaudited
FY 2009 Compared to FY 2008

Week	FY 2009 Week Ending	INSTANT TICKETS				ON-LINE GAMES				TOTAL SALES			
		FY 2009	FY 2008	Difference	% change - Cumulative Sales	FY 2009	FY 2008	Difference	% change - Cumulative Sales	FY 2009	FY 2008	Difference	% change - Cumulative Sales
41	6/13/2009		\$51,171,483				\$16,589,087				\$67,760,570		
42	6/20/2009		\$50,650,362				\$15,728,484				\$66,378,846		
43	6/27/2009		\$49,258,266				\$15,250,905				\$64,509,171		
44	7/4/2009		\$53,393,355				\$16,270,619				\$69,663,974		
45	7/11/2009		\$53,127,756				\$16,914,922				\$70,042,678		
46	7/18/2009		\$51,593,146				\$17,752,738				\$69,345,884		
47	7/25/2009		\$49,902,181				\$16,706,145				\$66,608,326		
48	8/1/2009		\$49,605,420				\$16,254,383				\$65,859,803		
49	8/8/2009		\$50,961,907				\$16,770,496				\$67,732,403		
50	8/15/2009		\$49,452,511				\$16,749,487				\$66,201,998		
51	8/22/2009		\$49,249,518				\$17,286,302				\$66,535,820		
52	8/29/2009		\$49,468,928				\$18,109,997				\$67,578,925		
53	9/5/2009		\$6,054,239				\$493,109				\$6,547,348		
Total thru Current Week		\$1,381,377,635	\$1,419,509,739	(\$38,132,104)	-2.7%	\$436,024,696	\$448,464,260	(\$12,439,564)	-2.8%	\$1,817,402,331	\$1,867,973,999	(\$50,571,668)	-2.7%
Fiscal Year Total		\$1,381,377,635	\$2,783,836,095			\$436,024,696	\$887,641,858			\$1,817,402,331	\$3,671,477,953		

** FY 2009 includes 6 days; FY 2008 includes 8 days
FY 2009 average daily sales are \$9,242,258. Two days at average daily sales are \$18,484,516.

Texas Lottery Commission Fiscal Year Over Year Change in Sales



Note: Week 1 is not a full week of sales as this report is prepared on a Fiscal Year basis.

Texas Lottery Commission
Instant Tickets by Price Point
Sales, Prize Expense, Sales Contribution and Payout Percentage With Year Over Year Changes
Unaudited

Fiscal Year	Price Point	# of Active Games	FY Sales	% of Instant Ticket Sales	Year over Year Change in Sales	FY Prize Expense	Year over Year Change in Prize Expense	FY Sales Contribution	Year over Year Change in Contribution	Average Prize Payout %	Year over Year Change in Payout %
2008	\$1.00	40	121,126,251	8.5%		73,460,193		47,666,058		60.6%	0.9%
thru	\$2.00	46	233,867,860	16.5%		152,380,492		81,487,368		65.2%	0.5%
3/1/2008	\$3.00	13	115,758,414	8.2%		76,142,309		39,616,105		65.8%	-0.1%
	\$5.00	39	394,289,545	27.8%		267,023,513		127,266,032		67.7%	-0.4%
	\$7.00	11	92,592,843	6.5%		62,968,044		29,624,799		68.0%	0.1%
	\$10.00	17	215,220,956	15.2%		149,612,058		65,608,898		69.5%	-1.4%
	\$20.00	7	86,543,180	6.1%		62,233,812		24,309,368		71.9%	-0.1%
	\$25.00	2	43,505,000	3.1%		31,587,037		11,917,963		72.6%	0.3%
	\$30.00	3	31,104,390	2.2%		22,511,956		8,592,434		72.4%	0.1%
	\$50.00	2	85,501,300	6.0%		61,682,895		23,818,405		72.1%	0.0%
Total		180	\$1,419,509,739			\$959,602,311		\$459,907,428		67.6%	
2009	\$1.00	39	122,096,054	8.8%		73,436,305		48,659,749		60.1%	0.1%
thru	\$2.00	34	239,460,391	17.3%		156,066,756		83,393,635		65.2%	-0.2%
2/28/2009	\$3.00	14	145,522,851	10.5%		95,652,357		49,870,494		65.7%	0.0%
	\$5.00	38	425,842,279	30.8%		289,617,070		136,225,209		68.0%	0.1%
	\$7.00	7	65,967,685	4.8%		44,863,029		21,104,656		68.0%	0.0%
	\$10.00	16	188,310,850	13.6%		131,772,463		56,538,387		70.0%	0.0%
	\$20.00	8	128,002,620	9.3%		91,855,594		36,147,026		71.8%	0.0%
	\$25.00	1	2,373,025	0.2%		1,726,035		646,990		72.7%	0.2%
	\$30.00	3	10,029,930	0.7%		7,268,034		2,761,896		72.5%	0.1%
	\$50.00	3	53,771,950	3.9%		38,868,021		14,903,929		72.3%	0.2%
Total		163	\$1,381,377,635			\$931,125,663		\$450,251,972		67.4%	-0.4%
Variance	\$1.00	-1	969,803		0.8%	-23,889	0.0%	993,692	2.1%	-0.50%	
2009 to	\$2.00	-12	5,592,531		2.4%	3,686,264	2.4%	1,906,267	2.3%	0.02%	
2008	\$3.00	1	29,764,437		25.7%	19,510,047	25.6%	10,254,390	25.9%	-0.05%	
	\$5.00	-1	31,552,734		8.0%	22,593,556	8.5%	8,959,178	7.0%	0.29%	
	\$7.00	-4	-26,625,158		-28.8%	-18,105,015	-28.8%	-8,520,143	-28.8%	0.00%	
	\$10.00	-1	-26,910,106		-12.5%	-17,839,595	-11.9%	-9,070,511	-13.8%	0.46%	
	\$20.00	1	41,459,440		47.9%	29,621,781	47.6%	11,837,659	48.7%	-0.15%	
	\$25.00	-1	-41,131,975		-94.5%	-29,861,002	-94.5%	-11,270,973	-94.6%	0.13%	
	\$30.00	0	-21,074,460		-67.8%	-15,243,923	-67.7%	-5,830,537	-67.9%	0.09%	
	\$50.00	1	-31,729,350		-37.1%	-22,814,874	-37.0%	-8,914,476	-37.4%	0.14%	
Total		-17	-\$38,132,104		-2.7%	-\$28,476,648	-3.0%	-\$9,655,456	-2.1%	-0.20%	

Texas Lottery Commission
Instant Tickets by Price Point
Sales, Prize Expense, Sales Contribution and Payout Percentage With Year Over Year Changes
Unaudited

Notes - Instant Ticket Variances

		FY 2009		FY 2008		Difference
Sales	\$1 - \$7		\$998,889,260		\$957,634,913	\$41,254,347
Prize Exp.	\$1 - \$7		\$659,635,516		\$631,974,552	\$27,660,964
Sales Cont.	\$1 - \$7		\$339,253,744		\$325,660,361	\$13,593,383
Prize Exp. %	\$1 - \$7		66.0%		66.0%	0.0%
		FY 2009		FY 2008		Difference
Sales	\$10 - \$50		\$382,488,375		\$461,874,826	-\$79,386,451
Prize Exp.	\$10 - \$50		\$271,490,147		\$327,627,759	-\$56,137,612
Sales Cont.	\$10 - \$50		\$110,998,228		\$134,247,067	-\$23,248,839
Prize Exp. %	\$10 - \$50		71.0%		70.9%	0.0%
		FY 2009		FY 2008		Difference
Sales	Instant		\$1,381,377,635		\$1,419,509,739	-\$38,132,104
Prize Exp.	Instant		\$931,125,663		\$959,602,311	-\$28,476,648
Sales Cont.	Instant		\$450,251,972		\$459,907,428	-\$9,655,456
Prize Exp. %	Instant		67.4%		67.6%	-0.2%

		FY 2009		FY 2008		Difference
Sales	\$1 - \$10		\$1,187,200,110		\$1,172,855,869	\$14,344,241
Prize Exp.	\$1 - \$10		\$791,407,979		\$781,586,610	\$9,821,369
Sales Cont.	\$1 - \$10		\$395,792,131		\$391,269,259	\$4,522,872
Prize Exp. %	\$1 - \$10		66.7%		66.6%	0.0%
		FY 2009		FY 2008		Difference
Sales	\$20 - \$50		\$194,177,525		\$246,653,870	-\$52,476,345
Prize Exp.	\$20 - \$50		\$139,717,684		\$178,015,701	-\$38,298,017
Sales Cont.	\$20 - \$50		\$54,459,841		\$68,638,169	-\$14,178,328
Prize Exp. %	\$20 - \$50		72.0%		72.2%	-0.2%
		FY 2009		FY 2008		Difference
Sales	Instant		\$1,381,377,635		\$1,419,509,739	-\$38,132,104
Prize Exp.	Instant		\$931,125,663		\$959,602,311	-\$28,476,648
Sales Cont.	Instant		\$450,251,972		\$459,907,428	-\$9,655,456
Prize Exp. %	Instant		67.4%		67.6%	-0.2%

Texas Lottery Commission
 Weekly Sales Summary
 & Comparison to Previous Week
 Unaudited

	Week Ending 02/28/2009		Week Ending 02/21/2009			
	<u>THIS WEEK</u>	% of Sales	<u>LAST WEEK</u>	% of Sales	<u>\$ change</u>	<u>% change</u>
Total Sales	<u>\$82,974,140</u>		<u>\$80,292,822</u>		<u>\$2,681,318</u>	3.34%
Instant Tickets	<u>\$58,857,216</u>	70.9%	<u>\$59,194,623</u>	73.7%	<u>-\$337,407</u>	-0.57%
Lotto Texas	\$4,526,304	5.5%	\$4,326,401	5.4%	\$199,903	4.62%
Pick 3	\$6,084,458	7.3%	\$6,038,808	7.5%	\$45,650	0.76%
Pick 3 Sum It Up	\$128,980	0.2%	\$128,493	0.2%	\$487	0.38%
Cash 5	\$1,439,607	1.7%	\$1,439,312	1.8%	\$295	0.02%
Texas Two Step	\$1,668,414	2.0%	\$1,268,803	1.6%	\$399,611	31.50%
Mega Millions	\$7,676,975	9.3%	\$5,614,471	7.0%	\$2,062,504	36.74%
Megaplier	\$1,504,895	1.8%	\$1,178,133	1.5%	\$326,762	27.74%
Daily 4	\$973,121	1.2%	\$988,075	1.2%	-\$14,954	-1.51%
Daily 4 Sum It Up	\$114,171	0.1%	\$115,704	0.1%	-\$1,533	-1.32%
Total Online Sales	<u>\$24,116,924</u>		<u>\$21,098,199</u>		<u>\$3,018,725</u>	14.31%

* Totals may not sum due to rounding.

Texas Lottery Commission
Weekly Sales Summary
Unaudited

INSTANT TICKETS
TOP TEN SELLING GAMES

For the Week Ending : 02/28/2009

Rank	Price Point	Game	Sales (Millions)
1	\$ 5	BUST THE BANK	\$ 4.329
2	\$ 10	20 TIMES THE MONEY	\$ 3.328
3	\$ 10	STACKS OF CASH	\$ 3.098
4	\$ 7	DAZZLIN' DIAMOND 7'S	\$ 2.922
5	\$ 3	BONUS CASHWORD	\$ 2.715
6	\$ 20	SUPER SET FOR LIFE	\$ 2.573
7	\$ 5	POT O'GOLD	\$ 2.481
8	\$ 2	FUN \$50'S	\$ 2.018
9	\$ 10	SET FOR LIFE	\$ 1.977
10	\$ 5	WELCOME TO FABULOUS LAS VEGAS	\$ 1.877

Texas Lottery Commission
Prize Payout Tracking Report
Unaudited

Through Week Ending 02/28/2009

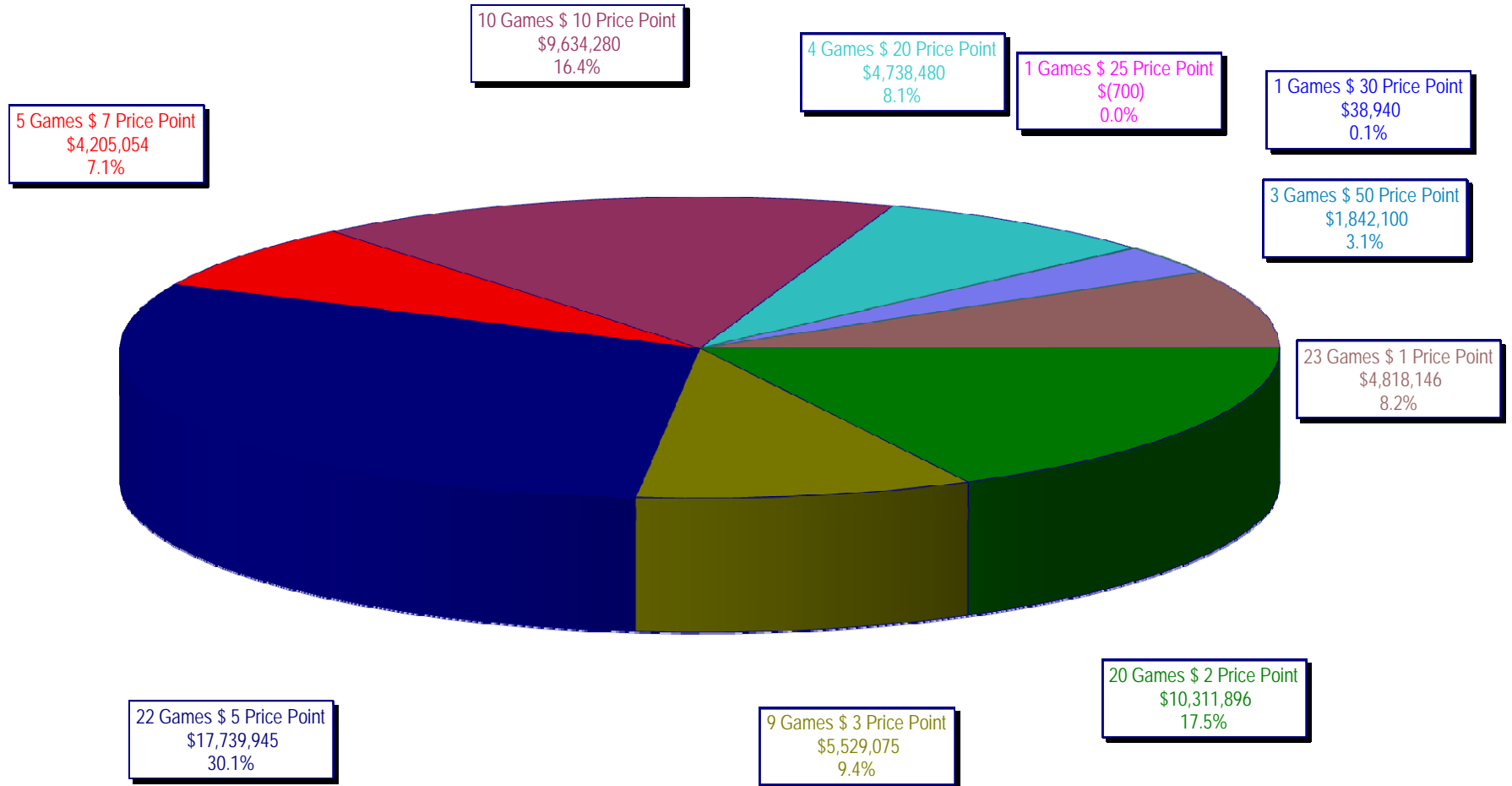
On-Line Sales

		FY Sales Through Week Ending 2/28/2009		FY Prize Expense Through Week Ending 2/28/2009	Actual* Prize Payout	Base Payout (Prize Pool)
Lotto	\$	93,946,624	\$	47,074,887	50.11%	50.00%
Pick 3		142,208,049		71,865,790	50.54%	50.00%
Pick 3 Sum It Up		3,008,670		1,343,099	44.64%	50.00%
Cash 5		35,603,034		17,903,704	50.29%	50.00%
Texas Two-Step		24,081,141		13,216,277	54.88%	50.00%
Mega Millions		91,316,866		43,278,308	47.39%	50.00%**
Megaplier		21,237,319		8,780,786	41.35%	N/A
Daily 4		21,883,217		10,201,650	46.62%	50.00%
Daily 4-Sum It Up		2,739,777		1,185,372	43.27%	50.00%
Totals	\$	436,024,696	\$	214,849,873	49.27%	

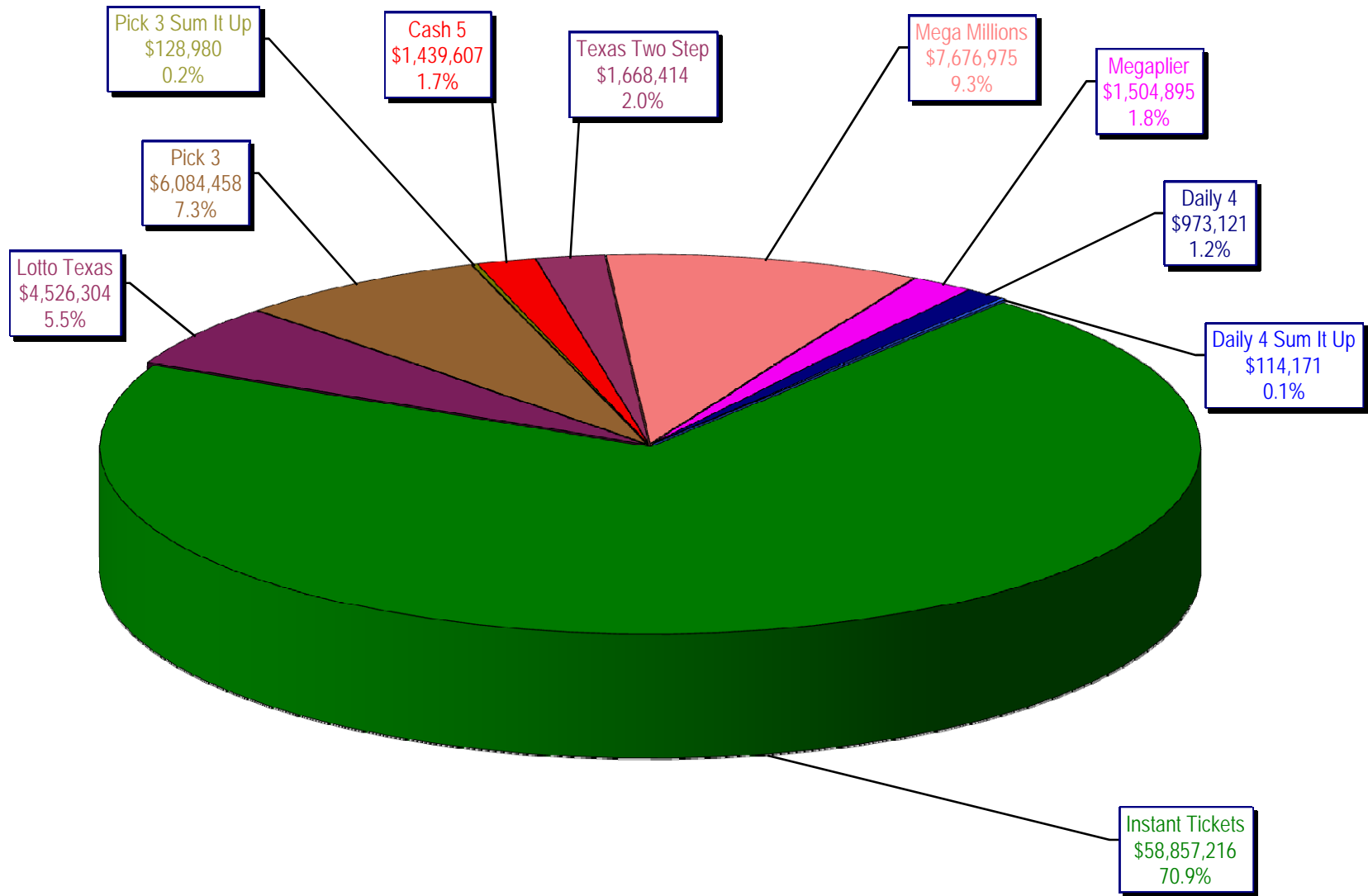
* Before Unclaimed Prizes

** Estimated; depends on # of guaranteed prizes won in Texas

Texas Lottery Commission
Instant Ticket Sales
For the Week Ending 02/28/2009
(Unaudited)



Texas Lottery Commission
All Game Sales
For the Week Ending 02/28/2009
(Unaudited)



Texas Lottery Commission - Weekly Sales Summary for FY 2009 (Unaudited)

Week Ended	Instant Games	New Games & Dates	Lotto Texas	Jackpot		Pick 3	Pick 3 Sum It Up	Cash 5	Texas Two Step	Jackpot		Mega Millions	Jackpot		Megaplier	Daily 4	Daily 4 Sum It Up	Total	Per Cap.
				W	S					M/T	TH/F		T	F					
9/6/2008	50,944,343.00	1108 (\$2,N), 1088 (\$3, N) - 9/01/08	3,378,718.00	5	6	5,436,414.00	122,123.00	1,396,622.00	890,346.00	350	450	2,445,490.00	12	16	649,090.00	786,482.50	109,834.00	66,159,462.50	2.77
9/13/2008	46,309,551.00	1109 (\$1,N), 1098 (\$5, N) - 9/08/08	3,020,089.00	7	8	4,705,585.50	105,899.00	1,279,412.00	856,199.00	600	200	2,327,214.00	24	12	617,672.00	696,633.00	96,156.50	60,014,411.00	2.51
9/20/2008	42,923,171.00	0	3,054,093.00	9	10	4,121,734.50	90,718.00	1,155,350.00	637,792.00	225	250	1,978,127.00	15	12	540,225.00	627,210.00	86,013.50	55,214,434.00	2.31
9/27/2008	47,042,801.00	1111 (\$2,N), 1099 (\$5, N) - 9/22/08	3,427,671.00	11	12	4,821,563.00	103,189.50	1,288,062.00	834,307.00	275	425	2,322,862.00	16	24	617,085.00	709,741.50	97,858.00	61,265,140.00	2.56
10/4/2008	50,747,162.00	1113 (\$1,N) 9/29/08	3,675,683.00	13	14	5,305,711.00	116,332.50	1,369,040.00	1,074,874.00	525	650	2,671,927.00	32	42	693,845.00	770,782.50	106,277.00	66,531,634.00	2.78
10/11/2008	49,763,789.00	0	3,732,365.00	15	16	5,287,094.00	114,665.50	1,370,334.00	1,305,250.00	800	975	2,306,070.00	12	16	622,120.00	778,204.00	106,395.00	65,386,286.50	2.74
10/18/2008	49,299,053.00	1117 (\$3,N), 1118 (\$20,N) - 10/13/08	3,780,438.00	17	18	5,149,258.00	109,530.00	1,355,601.00	741,849.00	200	200	2,500,644.00	23	32	652,198.00	776,366.00	102,056.00	64,466,993.00	2.70
10/25/2008	49,977,581.00	1119 (\$1,N), 1120 (\$5,N) - 10/20/08	3,210,762.00	4	5	5,099,671.00	107,104.50	1,339,079.00	789,649.00	225	275	2,456,965.00	42	12	641,206.00	778,434.00	102,972.50	64,503,424.00	2.70
11/1/2008	50,346,542.00	1121 (\$2,N), 1122 (\$10,N) - 10/27/08	3,325,641.00	6	7	5,234,124.00	109,983.00	1,339,046.00	946,035.00	375	475	2,347,596.00	16	23	626,235.00	805,572.00	104,612.50	65,185,386.50	2.73
11/8/2008	54,860,087.00	1123 (\$3,N), 1124 (\$7,N) - 11/03/08; 1103 (\$3,N) - 11/05/08; 1063 (\$3,N) - 11/07/08	3,290,417.00	4	5	5,686,701.00	118,495.00	1,397,985.00	1,158,101.00	625	750	2,729,302.50	31	42	692,662.00	871,230.00	112,175.50	70,917,156.00	2.97
11/15/2008	53,484,812.00	1125 (\$1, N), 1126 (\$5,N) - 11/10/08	3,336,934.00	6	7	5,459,984.00	112,884.00	1,366,024.00	766,955.00	200	225	3,102,251.00	51	62	749,736.00	830,957.00	104,094.00	69,314,631.00	2.90
11/22/2008	52,806,511.00	0	3,452,481.00	8	9	5,329,591.00	108,861.50	1,358,271.00	743,950.00	200	200	3,666,517.00	73	86	847,201.00	849,077.50	104,797.50	69,267,258.50	2.90
11/29/2008	52,199,741.00	1127 (\$2,N), 1128 (\$5,N) - 11/24/08	3,585,374.00	10	11	5,340,783.50	111,443.00	1,315,233.00	686,077.00	200	225	4,441,715.00	96	111	968,906.00	845,475.50	102,569.00	69,597,317.00	2.91
12/6/2008	56,731,851.00	0	3,794,991.00	12	13	5,752,593.00	121,663.50	1,416,446.00	780,328.00	250	200	6,238,355.00	128	146	1,270,214.00	881,841.50	107,357.00	77,095,640.00	3.23
12/13/2008	54,109,617.00	1129 (\$1, N) - 12/08/08	3,315,658.00	4	5	5,580,770.00	114,295.50	1,384,858.00	766,893.00	225	250	9,150,536.00	170	207	1,691,121.00	846,176.50	101,919.50	77,061,844.50	3.22
12/20/2008	55,777,328.00	1104 (\$2,N), 1105 (\$5,N), 1106 (\$10,N) - 12/15/08	3,432,340.00	6	7	5,741,120.00	116,075.50	1,401,805.00	741,945.00	200	200	2,736,234.00	12	16	687,875.00	871,579.50	104,543.00	71,610,845.00	3.00
12/27/2008	57,597,885.00	1077 (\$1,N), 1110 (\$1,N) - 12/22/08	3,582,169.00	8	4	5,628,081.50	115,323.00	1,340,590.00	708,906.00	225	250	2,842,167.00	22	29	706,042.00	828,346.00	100,146.00	73,449,655.50	3.07
1/3/2009	57,582,115.00	0	3,784,763.00	5	6	5,690,220.50	120,519.50	1,406,807.00	934,000.00	325	525	3,190,457.00	37	46	780,850.00	885,674.00	106,736.50	74,482,142.50	3.12
1/10/2009	54,250,945.00	1135 (\$2,N), 1136 (\$5,N) - 1/5/09	3,582,400.00	7	8	5,476,890.00	116,674.50	1,403,531.00	1,267,847.00	675	900	2,701,275.00	12	16	681,574.00	868,919.00	104,109.50	70,454,165.00	2.95
1/17/2009	51,625,339.00	1137 (\$1,N), 1138 (\$3,N) - 1/12/09	3,668,302.50	9	10	5,443,159.00	112,605.00	1,387,958.00	778,563.00	200	200	2,683,707.00	22	12	675,416.00	852,987.00	98,907.50	67,326,944.00	2.82
1/24/2009	52,789,573.00	1115 (\$2,N), 1116 (\$5,N) - 1/19/09	3,723,835.50	11	12	5,514,547.50	115,827.50	1,376,695.00	860,483.00	225	325	2,692,611.00	16	21	676,936.00	836,996.00	99,541.00	68,687,045.50	2.87
1/31/2009	55,453,471.00	1080 (\$1,N), 1024 (\$20,R) - 1/26/09; 1062 (\$5,N) - 1/28/09	3,837,299.00	13	14	5,700,714.50	121,794.50	1,403,756.00	1,070,879.00	450	600	3,002,883.00	30	40	731,253.00	925,937.50	113,755.50	72,361,743.00	3.03
2/7/2009	62,247,711.00	1035 (\$2,N), 1144 (\$5,N), 1058 (\$10, N) - 2/2/09	4,092,117.00	15	16	6,336,717.00	134,543.00	1,481,812.00	842,746.00	200	225	3,509,032.00	50	60	829,550.00	1,007,529.00	120,267.50	80,602,024.50	3.37
2/14/2009	60,509,056.00	1146 (\$7,N), 1089 (\$1,N) - 2/9/09	4,119,193.00	17	18	6,363,028.00	133,901.50	1,445,616.00	1,013,987.00	325	450	4,082,572.00	73	85	928,813.00	1,010,898.50	120,068.50	79,727,133.50	3.34
2/21/2009	59,194,623.00	1046 (\$2,N), 1140 (\$5,N) - 2/16/09	4,326,401.00	19	20	6,038,807.50	128,493.00	1,439,312.00	1,268,803.00	600	750	5,614,471.00	103	120	1,178,133.00	988,075.00	115,703.50	80,292,822.00	3.36
2/28/2009	58,857,216.00	1132 (\$10,N), 1149 (\$1,N) - 2/23/09	4,526,304.00	21	22	6,084,457.50	128,979.50	1,439,607.00	1,668,414.00	925	1,150	7,676,975.00	145	171	1,504,895.00	973,121.00	114,171.00	82,974,140.00	3.47
weekly change	-0.57%		4.62%			0.76%	0.38%	0.02%	31.50%			36.74%			27.74%	-1.51%	-1.32%	3.34%	
	SALES		SALES			SALES	SALES	SALES	SALES			SALES			SALES	SALES	SALES	SALES	% of Sales
Startup to date	34,861,963,637.00		10,373,043,671.00			3,440,927,001.00	9,494,500.00	2,154,759,044.00	450,346,859.00			1,017,455,460.50			239,445,353.00	64,100,188.50	11,078,580.50	52,830,748,266.50	100.0%
Calendar Year to date	480,059,962.00		33,674,379.00			49,767,502.00	175,670.50	12,020,590.00	9,187,722.00			33,498,557.00			7,577,538.00	7,892,530.00	937,773.00	634,792,223.50	100.0%
Fiscal Year to date 2009	1,381,377,635.00		93,946,624.00			142,208,048.50	3,008,670.00	35,603,034.00	24,081,141.00			91,316,865.50			21,237,319.00	21,883,217.00	2,739,777.00	1,817,402,331.00	100.0%