



WEEKLY SALES SUMMARY

Unaudited

Week Ending: 03/07/2009

Texas Lottery Commission
Fiscal Year to Date Sales Comparison
Unaudited

Through the week ending 03/07/2009 (27 weeks)

Sales by Game	FY 2007 *	FY 2008 **	FY 2009	\$ Change		% Change	
				FY 2009 to FY 2007	FY 2009 to FY 2008	FY 2009 to FY 2007	FY 2009 to FY 2008
Instant	\$ 1,484,262,065	\$ 1,476,347,220	\$ 1,440,929,892	\$ -43,332,173	\$ -35,417,328	-2.9%	-2.4%
Lotto Texas	121,237,210	111,091,275	98,875,064	-22,362,146	-12,216,211	-18.4%	-11.0%
Pick 3	164,327,027	150,116,562	148,341,838	-15,985,190	-1,774,725	-9.7%	-1.2%
Pick 3 Sum It Up	-	3,144,667	3,137,269	3,137,269	-7,398	-	-0.2%
Cash 5	46,034,022	40,248,821	37,090,219	-8,943,803	-3,158,602	-19.4%	-7.8%
Texas Two Step	27,501,122	23,067,630	26,065,499	-1,435,623	2,997,869	-5.2%	13.0%
Mega Millions	102,338,260	89,165,280	98,215,323	-4,122,938	9,050,043	-4.0%	10.1%
Megaplier	22,741,850	21,055,470	22,586,746	-155,104	1,531,276	-0.7%	7.3%
Daily 4	-	22,002,677	22,854,862	22,854,862	852,185	-	3.9%
Daily 4 Sum It Up	-	5,262,071	2,853,013	2,853,013	-2,409,058	-	-45.8%
Total	\$ 1,968,441,556	\$ 1,941,501,673	\$ 1,900,949,724	\$ -67,491,833	\$ -40,551,949	-3.4%	-2.1%

* 3 extra days in 2007 ** 2 extra days in 2008

Texas Lottery Commission
Fiscal Year Over Year Change in Sales
Unaudited
FY 2009 Compared to FY 2008

Week	FY 2009 Week Ending	INSTANT TICKETS				ON-LINE GAMES				TOTAL SALES			
		FY 2009	FY 2008	Difference	% change - Cumulative Sales	FY 2009	FY 2008	Difference	% change - Cumulative Sales	FY 2009	FY 2008	Difference	% change - Cumulative Sales
1	9/6/2008**	\$44,890,104	\$62,376,229	(\$17,486,125)	-28.0%	\$14,722,011	\$19,372,224	(\$4,650,213)	-24.0%	\$59,612,115	\$81,748,453	(\$22,136,338)	-27.1%
2	9/13/2008	\$46,309,551	\$52,458,866	(\$6,149,315)	-20.6%	\$13,704,860	\$16,926,163	(\$3,221,303)	-21.7%	\$60,014,411	\$69,385,029	(\$9,370,618)	-20.8%
3	9/20/2008	\$42,923,171	\$49,998,934	(\$7,075,763)	-18.6%	\$12,291,263	\$15,792,283	(\$3,501,020)	-21.8%	\$55,214,434	\$65,791,217	(\$10,576,783)	-19.4%
4	9/27/2008	\$47,042,801	\$49,894,175	(\$2,851,374)	-15.6%	\$14,222,339	\$14,800,514	(\$578,175)	-17.9%	\$61,265,140	\$64,694,689	(\$3,429,549)	-16.2%
5	10/4/2008	\$50,747,162	\$53,486,863	(\$2,739,701)	-13.5%	\$15,784,472	\$16,618,430	(\$833,958)	-15.3%	\$66,531,634	\$70,105,293	(\$3,573,659)	-14.0%
6	10/11/2008	\$49,763,789	\$50,918,020	(\$1,154,231)	-11.7%	\$15,622,498	\$15,601,410	\$21,088	-12.9%	\$65,386,287	\$66,519,430	(\$1,133,143)	-12.0%
7	10/18/2008	\$49,299,053	\$50,532,253	(\$1,233,200)	-10.5%	\$15,167,940	\$15,682,666	(\$514,726)	-11.6%	\$64,466,993	\$66,214,919	(\$1,747,926)	-10.7%
8	10/25/2008	\$49,977,581	\$50,347,450	(\$369,869)	-9.3%	\$14,525,843	\$15,586,516	(\$1,060,673)	-11.0%	\$64,503,424	\$65,933,966	(\$1,430,542)	-9.7%
9	11/1/2008	\$50,346,542	\$53,953,733	(\$3,607,191)	-9.0%	\$14,838,845	\$16,775,983	(\$1,937,139)	-11.1%	\$65,185,387	\$70,729,716	(\$5,544,330)	-9.5%
10	11/8/2008	\$54,860,087	\$53,635,090	\$1,224,997	-7.9%	\$16,057,069	\$15,912,791	\$144,278	-9.9%	\$70,917,156	\$69,547,881	\$1,369,275	-8.3%
11	11/15/2008	\$53,484,812	\$51,254,401	\$2,230,411	-6.8%	\$15,829,819	\$15,797,076	\$32,744	-9.0%	\$69,314,631	\$67,051,477	\$2,263,155	-7.3%
12	11/22/2008	\$52,806,511	\$50,897,817	\$1,908,694	-5.9%	\$16,460,748	\$15,801,720	\$659,028	-7.9%	\$69,267,259	\$66,699,537	\$2,567,722	-6.4%
13	11/29/2008	\$52,199,741	\$53,913,115	(\$1,713,374)	-5.7%	\$17,397,576	\$17,055,505	\$342,072	-7.1%	\$69,597,317	\$70,968,620	(\$1,371,303)	-6.0%
14	12/6/2008	\$56,731,851	\$55,702,697	\$1,029,154	-5.1%	\$20,363,789	\$17,900,717	\$2,463,073	-5.5%	\$77,095,640	\$73,603,414	\$3,492,227	-5.2%
15	12/13/2008	\$54,109,617	\$53,703,516	\$406,101	-4.7%	\$22,952,228	\$17,820,841	\$5,131,387	-3.0%	\$77,061,845	\$71,524,357	\$5,537,488	-4.3%
16	12/20/2008	\$55,777,328	\$57,592,769	(\$1,815,441)	-4.6%	\$15,833,517	\$17,436,233	(\$1,602,716)	-3.4%	\$71,610,845	\$75,029,002	(\$3,418,157)	-4.3%
17	12/27/2008	\$57,597,885	\$57,696,003	(\$98,118)	-4.3%	\$15,851,771	\$14,743,680	\$1,108,091	-2.9%	\$73,449,656	\$72,439,683	\$1,009,973	-4.0%
18	1/3/2009	\$57,582,115	\$57,935,952	(\$353,837)	-4.1%	\$16,900,028	\$15,704,450	\$1,195,578	-2.3%	\$74,482,143	\$73,640,402	\$841,741	-3.7%
19	1/10/2009	\$54,250,945	\$55,360,542	(\$1,109,597)	-4.0%	\$16,203,220	\$15,691,540	\$511,680	-2.0%	\$70,454,165	\$71,052,082	(\$597,917)	-3.5%
20	1/17/2009	\$51,625,339	\$54,920,166	(\$3,294,827)	-4.1%	\$15,701,605	\$16,259,669	(\$558,064)	-2.1%	\$67,326,944	\$71,179,835	(\$3,852,891)	-3.6%
21	1/24/2009	\$52,789,573	\$54,439,890	(\$1,650,317)	-4.1%	\$15,897,473	\$16,691,724	(\$794,251)	-2.2%	\$68,687,046	\$71,131,614	(\$2,444,568)	-3.6%
22	1/31/2009	\$55,453,471	\$57,464,382	(\$2,010,911)	-4.0%	\$16,908,272	\$17,968,227	(\$1,059,955)	-2.4%	\$72,361,743	\$75,432,609	(\$3,070,866)	-3.7%
23	2/7/2009	\$62,247,711	\$60,715,019	\$1,532,692	-3.7%	\$18,354,314	\$20,097,338	(\$1,743,025)	-2.7%	\$80,602,025	\$80,812,357	(\$210,333)	-3.5%
24	2/14/2009	\$60,509,056	\$57,093,143	\$3,415,913	-3.3%	\$19,218,078	\$22,179,908	(\$2,961,831)	-3.3%	\$79,727,134	\$79,273,051	\$454,083	-3.3%
25	2/21/2009	\$59,194,623	\$57,627,047	\$1,567,576	-3.0%	\$21,098,199	\$27,230,539	(\$6,132,340)	-4.5%	\$80,292,822	\$84,857,586	(\$4,564,764)	-3.4%
26	2/28/2009	\$58,857,216	\$55,591,667	\$3,265,549	-2.7%	\$24,116,924	\$17,016,118	\$7,100,806	-2.8%	\$82,974,140	\$72,607,785	\$10,366,355	-2.7%
27	3/7/2009	\$59,552,257	\$56,837,481	\$2,714,776	-2.4%	\$23,995,136	\$16,690,193	\$7,304,943	-1.1%	\$83,547,393	\$73,527,674	\$10,019,719	-2.1%
28	3/14/2009		\$54,587,112				\$16,448,165				\$71,035,277		
29	3/21/2009		\$53,098,937				\$16,639,184				\$69,738,121		
30	3/28/2009		\$53,933,689				\$17,698,625				\$71,632,314		
31	4/4/2009		\$57,598,982				\$17,665,411				\$75,264,393		
32	4/11/2009		\$53,954,185				\$15,860,784				\$69,814,969		
33	4/18/2009		\$53,946,736				\$16,452,676				\$70,399,412		
34	4/25/2009		\$51,533,006				\$16,873,949				\$68,406,955		
35	5/2/2009		\$53,250,568				\$18,202,103				\$71,452,671		
36	5/9/2009		\$54,060,849				\$18,422,562				\$72,483,411		
37	5/16/2009		\$54,010,641				\$20,728,360				\$74,739,001		
38	5/23/2009		\$50,377,032				\$15,461,384				\$65,838,416		
39	5/30/2009		\$49,545,080				\$15,175,370				\$64,720,450		
40	6/6/2009		\$53,702,986				\$15,982,166				\$69,685,152		

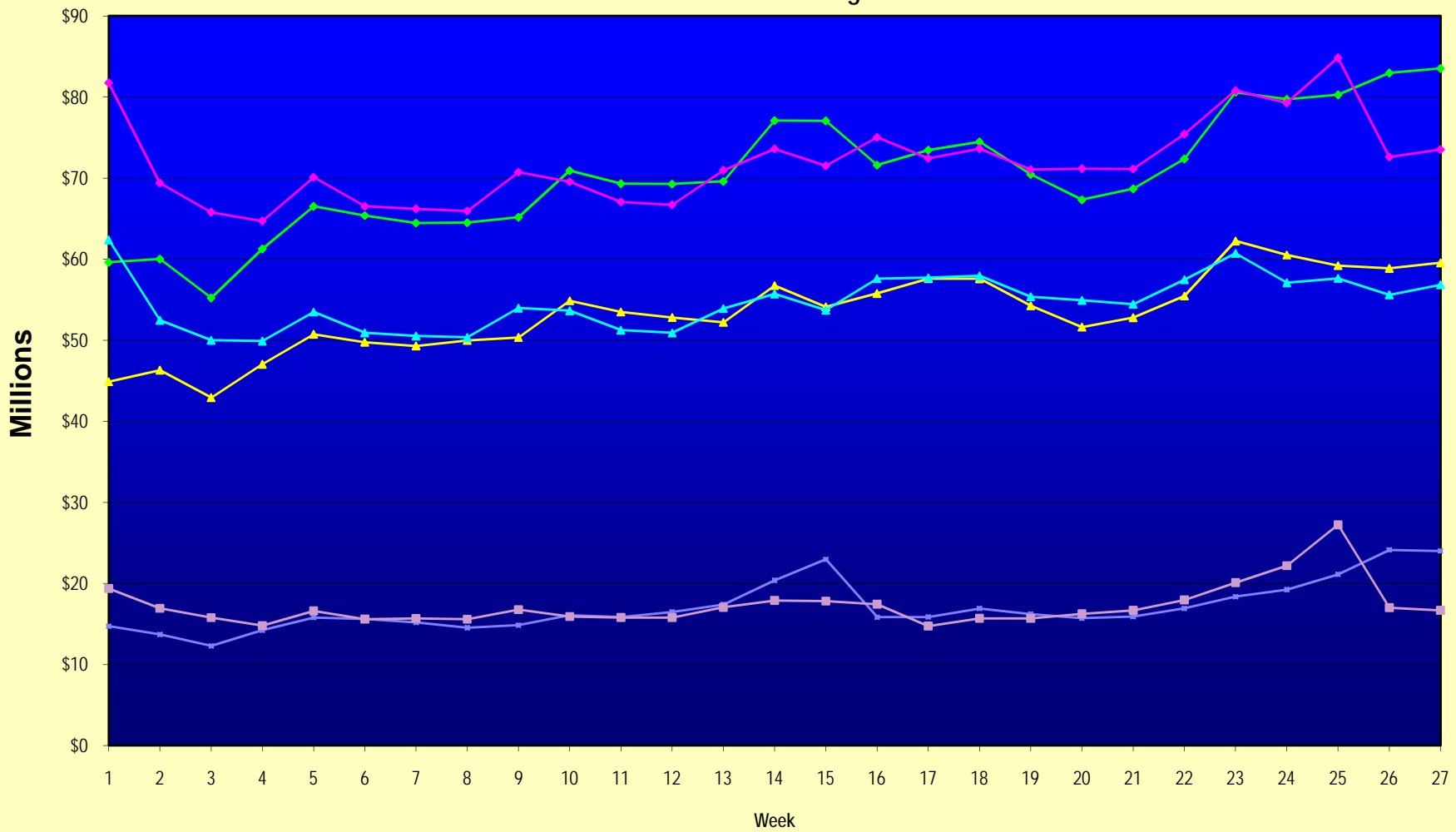
Note: Week 1 is not a full week of sales as this report is prepared on a Fiscal Year basis.

Texas Lottery Commission
Fiscal Year Over Year Change in Sales
Unaudited
FY 2009 Compared to FY 2008

Week	FY 2009 Week Ending	INSTANT TICKETS				ON-LINE GAMES				TOTAL SALES			
		FY 2009	FY 2008	Difference	% change - Cumulative Sales	FY 2009	FY 2008	Difference	% change - Cumulative Sales	FY 2009	FY 2008	Difference	% change - Cumulative Sales
41	6/13/2009		\$51,171,483				\$16,589,087				\$67,760,570		
42	6/20/2009		\$50,650,362				\$15,728,484				\$66,378,846		
43	6/27/2009		\$49,258,266				\$15,250,905				\$64,509,171		
44	7/4/2009		\$53,393,355				\$16,270,619				\$69,663,974		
45	7/11/2009		\$53,127,756				\$16,914,922				\$70,042,678		
46	7/18/2009		\$51,593,146				\$17,752,738				\$69,345,884		
47	7/25/2009		\$49,902,181				\$16,706,145				\$66,608,326		
48	8/1/2009		\$49,605,420				\$16,254,383				\$65,859,803		
49	8/8/2009		\$50,961,907				\$16,770,496				\$67,732,403		
50	8/15/2009		\$49,452,511				\$16,749,487				\$66,201,998		
51	8/22/2009		\$49,249,518				\$17,286,302				\$66,535,820		
52	8/29/2009		\$49,468,928				\$18,109,997				\$67,578,925		
53	9/5/2009		\$6,054,239				\$493,109				\$6,547,348		
Total thru Current Week		\$1,440,929,892	\$1,476,347,220	(\$35,417,328)	-2.4%	\$460,019,832	\$465,154,453	(\$5,134,621)	-1.1%	\$1,900,949,724	\$1,941,501,673	(\$40,551,949)	-2.1%
Fiscal Year Total		\$1,440,929,892	\$2,783,836,095			\$460,019,832	\$887,641,858			\$1,900,949,724	\$3,671,477,953		

** FY 2009 includes 6 days; FY 2008 includes 8 days
FY 2009 average daily sales are \$9,242,258. Two days at average daily sales are \$18,484,516.

Texas Lottery Commission Fiscal Year Over Year Change in Sales



Note: Week 1 is not a full week of sales as this report is prepared on a Fiscal Year basis.

Texas Lottery Commission
Instant Tickets by Price Point
Sales, Prize Expense, Sales Contribution and Payout Percentage With Year Over Year Changes
Unaudited

Fiscal Year	Price Point	# of Active Games	FY Sales	% of Instant Ticket Sales	Year over Year Change in Sales	FY Prize Expense	Year over Year Change in Prize Expense	FY Sales Contribution	Year over Year Change in Contribution	Average Prize Payout %	Year over Year Change in Payout %
2008	\$1.00	40	125,126,119	8.5%		75,179,643		49,946,476		60.1%	0.0%
thru	\$2.00	46	242,691,972	16.4%		158,114,644		84,577,328		65.2%	0.5%
3/8/2008	\$3.00	14	121,370,952	8.2%		79,830,601		41,540,351		65.8%	-0.1%
	\$5.00	40	412,098,185	27.9%		279,126,889		132,971,296		67.7%	-0.4%
	\$7.00	11	95,168,556	6.4%		64,720,411		30,448,145		68.0%	0.1%
	\$10.00	17	222,896,816	15.1%		154,984,077		67,912,739		69.5%	-1.4%
	\$20.00	7	90,789,100	6.1%		65,289,496		25,499,604		71.9%	-0.1%
	\$25.00	2	44,307,750	3.0%		32,169,854		12,137,896		72.6%	0.3%
	\$30.00	3	33,128,670	2.2%		23,977,653		9,151,017		72.4%	0.1%
	\$50.00	2	88,769,100	6.0%		64,040,175		24,728,925		72.1%	0.0%
Total		182	\$1,476,347,220			\$997,433,443		\$478,913,777		67.6%	
2009	\$1.00	39	127,290,161	8.8%		76,554,739		50,735,422		60.1%	0.1%
thru	\$2.00	34	249,644,273	17.3%		162,680,157		86,964,116		65.2%	-0.2%
3/7/2009	\$3.00	14	151,119,231	10.5%		99,329,113		51,790,118		65.7%	0.0%
	\$5.00	38	443,312,934	30.8%		301,498,203		141,814,731		68.0%	0.1%
	\$7.00	7	70,093,688	4.9%		47,668,652		22,425,036		68.0%	0.0%
	\$10.00	16	198,691,300	13.8%		139,033,568		59,657,733		70.0%	0.0%
	\$20.00	8	132,793,640	9.2%		95,290,964		37,502,676		71.8%	0.0%
	\$25.00	1	2,373,025	0.2%		1,726,035		646,990		72.7%	0.2%
	\$30.00	3	10,027,590	0.7%		7,266,339		2,761,251		72.5%	0.1%
	\$50.00	3	55,584,050	3.9%		40,177,013		15,407,037		72.3%	0.2%
Total		163	\$1,440,929,892			\$971,224,783		\$469,705,109		67.4%	
Variance	\$1.00	-1	2,164,042		1.7%	1,375,096	1.8%	788,946	1.6%	0.06%	
2009 to	\$2.00	-12	6,952,301		2.9%	4,565,513	2.9%	2,386,788	2.8%	0.01%	
2008	\$3.00	0	29,748,279		24.5%	19,498,512	24.4%	10,249,767	24.7%	-0.05%	
	\$5.00	-2	31,214,749		7.6%	22,371,314	8.0%	8,843,435	6.7%	0.28%	
	\$7.00	-4	-25,074,868		-26.3%	-17,051,759	-26.3%	-8,023,109	-26.4%	0.00%	
	\$10.00	-1	-24,205,516		-10.9%	-15,950,509	-10.3%	-8,255,007	-12.2%	0.44%	
	\$20.00	1	42,004,540		46.3%	30,001,468	46.0%	12,003,072	47.1%	-0.15%	
	\$25.00	-1	-41,934,725		-94.6%	-30,443,819	-94.6%	-11,490,906	-94.7%	0.13%	
	\$30.00	0	-23,101,080		-69.7%	-16,711,314	-69.7%	-6,389,766	-69.8%	0.09%	
	\$50.00	1	-33,185,050		-37.4%	-23,863,163	-37.3%	-9,321,887	-37.7%	0.14%	
Total		-19	-\$35,417,328		-2.4%	-\$26,208,660	-2.6%	-\$9,208,668	-1.9%	-0.16%	

Texas Lottery Commission
Instant Tickets by Price Point
Sales, Prize Expense, Sales Contribution and Payout Percentage With Year Over Year Changes
Unaudited

Notes - Instant Ticket Variances

		FY 2009		FY 2008		Difference
Sales	\$1 - \$7		\$1,041,460,287		\$996,455,784	\$45,004,503
Prize Exp.	\$1 - \$7		\$687,730,864		\$656,972,188	\$30,758,676
Sales Cont.	\$1 - \$7		\$353,729,423		\$339,483,596	\$14,245,827
Prize Exp. %	\$1 - \$7		66.0%		65.9%	0.1%
		FY 2009		FY 2008		Difference
Sales	\$10 - \$50		\$399,469,605		\$479,891,436	-\$80,421,831
Prize Exp.	\$10 - \$50		\$283,493,919		\$340,461,255	-\$56,967,336
Sales Cont.	\$10 - \$50		\$115,975,686		\$139,430,181	-\$23,454,495
Prize Exp. %	\$10 - \$50		71.0%		70.9%	0.0%
		FY 2009		FY 2008		Difference
Sales	Instant		\$1,440,929,892		\$1,476,347,220	-\$35,417,328
Prize Exp.	Instant		\$971,224,783		\$997,433,443	-\$26,208,660
Sales Cont.	Instant		\$469,705,109		\$478,913,777	-\$9,208,668
Prize Exp. %	Instant		67.4%		67.6%	-0.2%

		FY 2009		FY 2008		Difference
Sales	\$1 - \$10		\$1,240,151,587		\$1,219,352,600	\$20,798,987
Prize Exp.	\$1 - \$10		\$826,764,431		\$811,956,264	\$14,808,167
Sales Cont.	\$1 - \$10		\$413,387,156		\$407,396,336	\$5,990,820
Prize Exp. %	\$1 - \$10		66.7%		66.6%	0.1%
		FY 2009		FY 2008		Difference
Sales	\$20 - \$50		\$200,778,305		\$256,994,620	-\$56,216,315
Prize Exp.	\$20 - \$50		\$144,460,351		\$185,477,179	-\$41,016,827
Sales Cont.	\$20 - \$50		\$56,317,954		\$71,517,441	-\$15,199,488
Prize Exp. %	\$20 - \$50		72.0%		72.2%	-0.2%
		FY 2009		FY 2008		Difference
Sales	Instant		\$1,440,929,892		\$1,476,347,220	-\$35,417,328
Prize Exp.	Instant		\$971,224,783		\$997,433,443	-\$26,208,660
Sales Cont.	Instant		\$469,705,109		\$478,913,777	-\$9,208,668
Prize Exp. %	Instant		67.4%		67.6%	-0.2%

Texas Lottery Commission
Weekly Sales Summary
& Comparison to Previous Week
 Unaudited

	Week Ending 03/07/2009		Week Ending 02/28/2009			
	<u>THIS WEEK</u>	% of Sales	<u>LAST WEEK</u>	% of Sales	<u>\$ change</u>	<u>% change</u>
Total Sales	<u>\$83,547,393</u>		<u>\$82,974,140</u>		<u>\$573,253</u>	0.69%
Instant Tickets	<u>\$59,552,257</u>	71.3%	<u>\$58,857,216</u>	70.9%	<u>\$695,041</u>	1.18%
Lotto Texas	\$4,928,440	5.9%	\$4,526,304	5.5%	\$402,136	8.88%
Pick 3	\$6,133,789	7.3%	\$6,084,458	7.3%	\$49,332	0.81%
Pick 3 Sum It Up	\$128,599	0.2%	\$128,980	0.2%	-\$381	-0.30%
Cash 5	\$1,487,185	1.8%	\$1,439,607	1.7%	\$47,578	3.30%
Texas Two Step	\$1,984,358	2.4%	\$1,668,414	2.0%	\$315,944	18.94%
Mega Millions	\$6,898,457	8.3%	\$7,676,975	9.3%	-\$778,518	-10.14%
Megaplier	\$1,349,427	1.6%	\$1,504,895	1.8%	-\$155,468	-10.33%
Daily 4	\$971,645	1.2%	\$973,121	1.2%	-\$1,477	-0.15%
Daily 4 Sum It Up	\$113,236	0.1%	\$114,171	0.1%	-\$935	-0.82%
Total Online Sales	<u>\$23,995,136</u>		<u>\$24,116,924</u>		<u>-\$121,789</u>	-0.50%

* Totals may not sum due to rounding.

Texas Lottery Commission
Weekly Sales Summary
Unaudited

INSTANT TICKETS
TOP TEN SELLING GAMES

For the Week Ending : 03/07/2009

Rank	Price Point	Game	Sales (Millions)
1	\$ 10	STACKS OF CASH	\$ 4.277
2	\$ 5	BUST THE BANK	\$ 3.633
3	\$ 10	20 TIMES THE MONEY	\$ 3.108
4	\$ 7	DAZZLIN' DIAMOND 7'S	\$ 2.861
5	\$ 3	BONUS CASHWORD	\$ 2.860
6	\$ 20	SUPER SET FOR LIFE	\$ 2.595
7	\$ 5	POT O'GOLD	\$ 2.548
8	\$ 5	WELCOME TO FABULOUS LAS VEGAS	\$ 2.071
9	\$ 10	SET FOR LIFE	\$ 2.056
10	\$ 5	BONUS BREAK THE BANK	\$ 1.824

Texas Lottery Commission
Prize Payout Tracking Report
Unaudited

Through Week Ending 03/07/2009

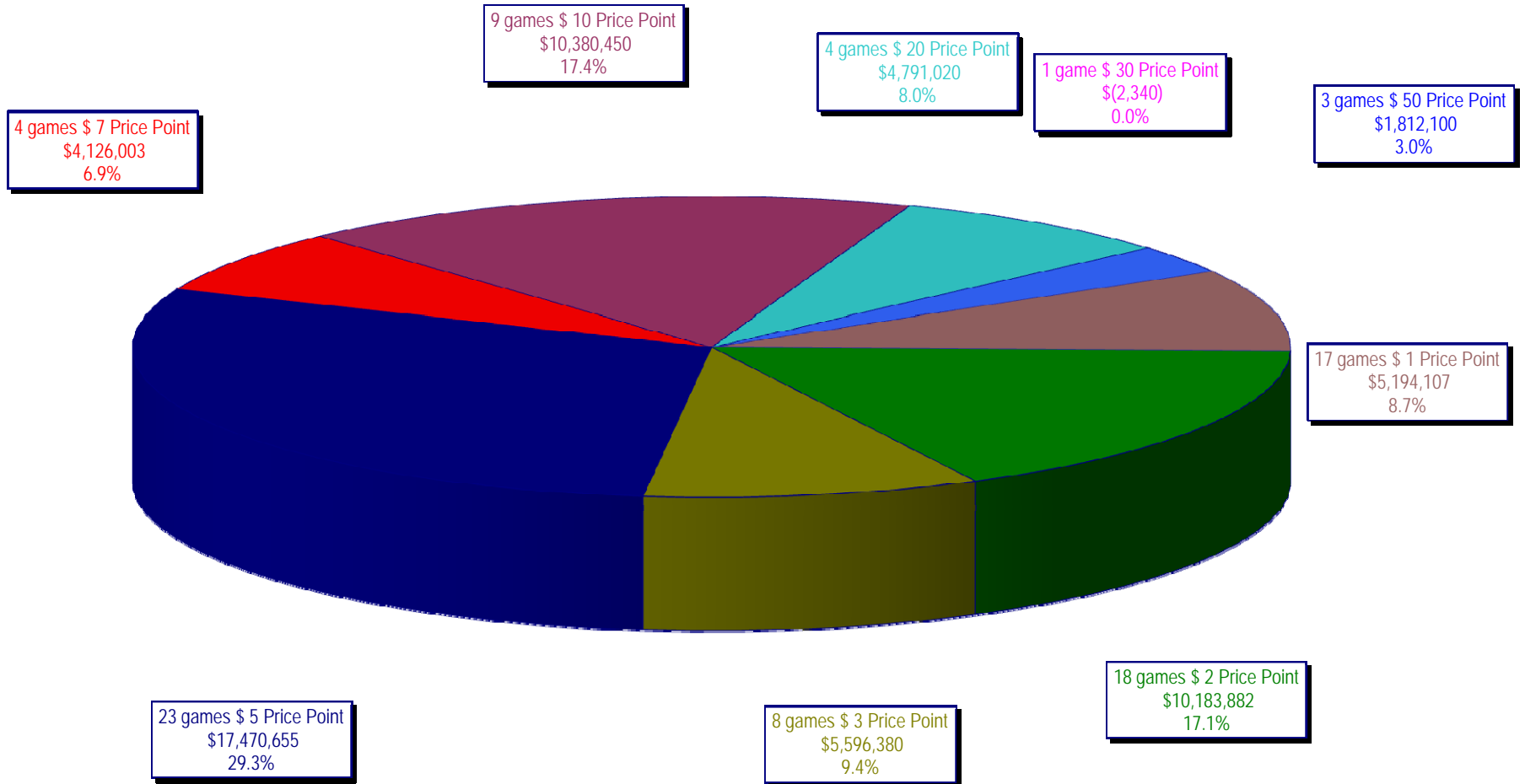
On-Line Sales

		FY Sales Through Week Ending 3/7/2009		FY Prize Expense Through Week Ending 3/7/2009	Actual* Prize Payout	Base Payout (Prize Pool)
Lotto	\$	98,875,064	\$	49,539,773	50.10%	50.00%
Pick 3		148,341,838		74,413,870	50.16%	50.00%
Pick 3 Sum It Up		3,137,269		1,388,700	44.26%	50.00%
Cash 5		37,090,219		18,647,553	50.28%	50.00%
Texas Two-Step		26,065,499		14,225,547	54.58%	50.00%
Mega Millions		98,215,323		48,455,275	49.34%	50.00%**
Megaplier		22,586,746		9,265,922	41.02%	N/A
Daily 4		22,854,862		10,781,025	47.17%	50.00%
Daily 4-Sum It Up		2,853,013		1,222,547	42.85%	50.00%
Totals	\$	460,019,832	\$	227,940,212	49.55%	

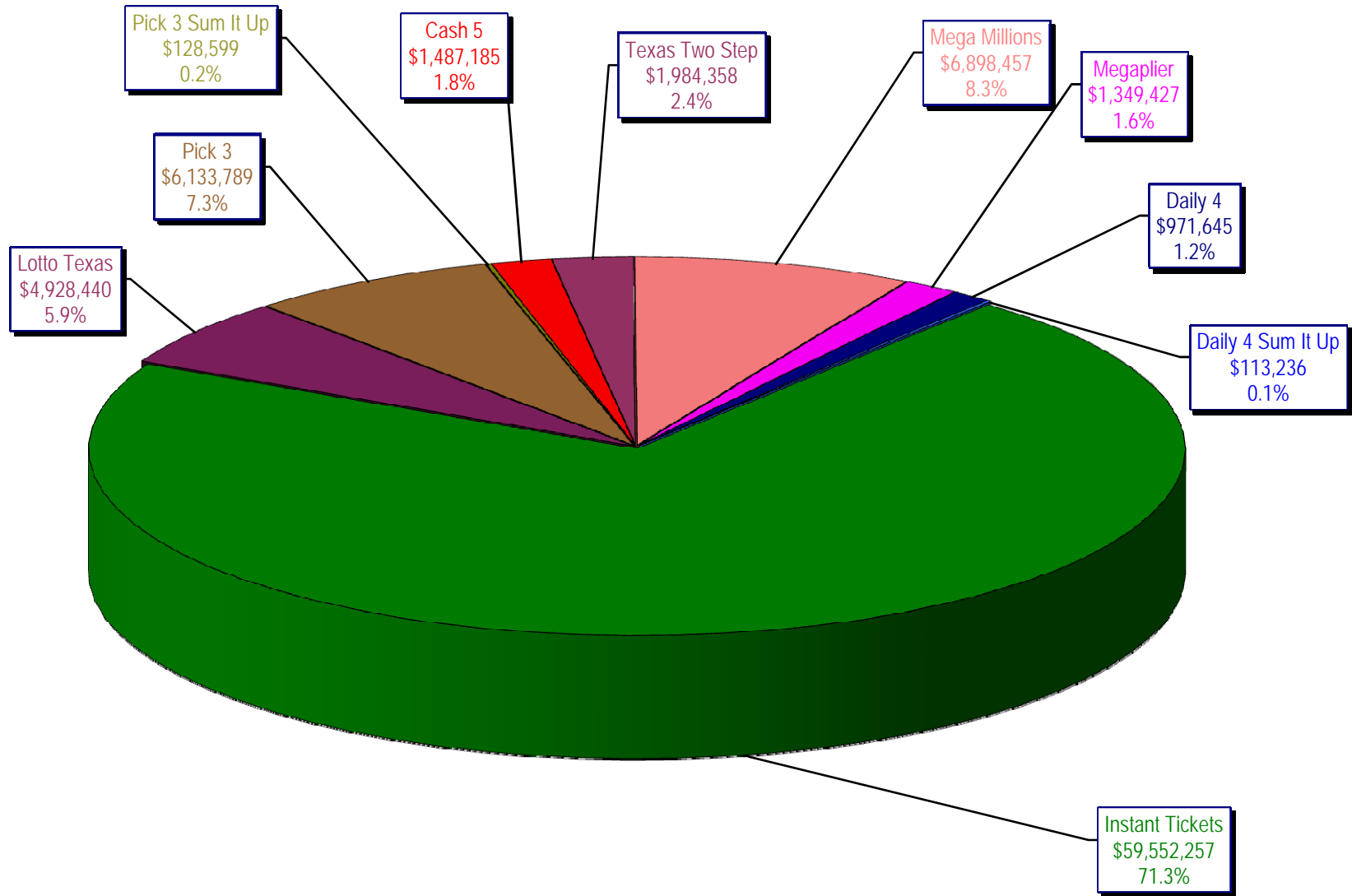
* Before Unclaimed Prizes

** Estimated; depends on # of guaranteed prizes won in Texas

Texas Lottery Commission
Instant Ticket Sales
For the Week Ending 03/07/2009
(Unaudited)



Texas Lottery Commission
All Game Sales
For the Week Ending 03/07/2009
(Unaudited)



Texas Lottery Commission - Weekly Sales Summary for FY 2009 (Unaudited)

Week Ended	Instant Games	New Games & Dates	Lotto Texas	Jackpot W	S	Pick 3	Pick 3 Sum It Up	Cash 5	Texas Two Step	Jackpot M/T	TH/F	Mega Millions	Jackpot T	F	Megaplier	Daily 4	Daily 4 Sum It Up	Total	Per Cap.
9/6/2008	50,944,343.00	1108 (\$2.N), 1088 (\$3. N) - 9/01/08	3,378,718.00	5	6	5,436,414.00	122,123.00	1,396,622.00	890,346.00	350	450	2,445,490.00	12	16	649,090.00	786,482.50	109,834.00	66,159,462.50	2.77
9/13/2008	46,309,551.00	1109 (\$1.N), 1098 (\$5. N) - 9/08/08	3,020,089.00	7	8	4,705,585.50	105,899.00	1,279,412.00	856,199.00	600	200	2,327,214.00	24	12	617,672.00	696,633.00	96,156.50	60,014,411.00	2.51
9/20/2008	42,923,171.00	0	3,054,093.00	9	10	4,121,734.50	90,718.00	1,155,350.00	637,792.00	225	250	1,978,127.00	15	12	540,225.00	627,210.00	86,013.50	55,214,434.00	2.31
9/27/2008	47,042,801.00	1111 (\$2.N), 1099 (\$5. N) - 9/22/08	3,427,671.00	11	12	4,821,563.00	103,189.50	1,288,062.00	834,307.00	275	425	2,322,862.00	16	24	617,085.00	709,741.50	97,858.00	61,265,140.00	2.56
10/4/2008	50,747,162.00	1113 (\$1.N) 9/29/08	3,675,683.00	13	14	5,305,711.00	116,332.50	1,369,040.00	1,074,874.00	525	650	2,671,927.00	32	42	693,845.00	770,782.50	106,277.00	66,531,634.00	2.78
10/11/2008	49,763,789.00	0	3,732,365.00	15	16	5,287,094.00	114,665.50	1,370,334.00	1,305,250.00	800	975	2,306,070.00	12	16	622,120.00	778,204.00	106,395.00	65,386,286.50	2.74
10/18/2008	49,299,053.00	1117 (\$3.N), 1118 (\$20.N) - 10/13/08	3,780,438.00	17	18	5,149,258.00	109,530.00	1,355,601.00	741,849.00	200	200	2,500,644.00	23	32	652,198.00	776,366.00	102,056.00	64,466,993.00	2.70
10/25/2008	49,977,581.00	1119 (\$1.N), 1120 (\$5.N) - 10/20/08	3,210,762.00	4	5	5,099,671.00	107,104.50	1,339,079.00	789,649.00	225	275	2,456,965.00	42	12	641,206.00	778,434.00	102,972.50	64,503,424.00	2.70
11/1/2008	50,346,542.00	1121 (\$2.N), 1122 (\$10.N) - 10/27/08	3,325,641.00	6	7	5,234,124.00	109,983.00	1,339,046.00	946,035.00	375	475	2,347,596.00	16	23	626,235.00	805,572.00	104,612.50	65,185,386.50	2.73
11/8/2008	54,860,087.00	1123 (\$3.N), 1124 (\$7.N) - 11/05/08 1103 (\$3.N) - 11/05/08, 1063 (\$3.N) - 11/07/08	3,290,417.00	4	5	5,686,701.00	118,495.00	1,397,985.00	1,158,101.00	625	750	2,729,302.50	31	42	692,662.00	871,230.00	112,175.50	70,917,156.00	2.97
11/15/2008	53,484,812.00	1125 (\$1. N), 1126 (\$5.N) - 11/10/08	3,336,934.00	6	7	5,459,984.00	112,884.00	1,366,024.00	766,955.00	200	225	3,102,251.00	51	62	749,736.00	830,957.00	104,094.00	69,314,631.00	2.90
11/22/2008	52,806,511.00	0	3,452,481.00	8	9	5,329,591.00	108,861.50	1,358,271.00	743,950.00	200	200	3,666,517.00	73	86	847,201.00	849,077.50	104,797.50	69,267,258.50	2.90
11/29/2008	52,199,741.00	1127 (\$2.N), 1128 (\$5.N) - 11/24/08	3,585,374.00	10	11	5,340,783.50	111,443.00	1,315,233.00	686,077.00	200	225	4,441,715.00	96	111	968,906.00	845,475.50	102,569.00	69,597,317.00	2.91
12/6/2008	56,731,851.00	0	3,794,991.00	12	13	5,752,593.00	121,663.50	1,416,446.00	780,328.00	250	200	6,238,355.00	128	146	1,270,214.00	881,841.50	107,357.00	77,095,640.00	3.23
12/13/2008	54,109,617.00	1129 (\$1. N) - 12/08/08	3,315,658.00	4	5	5,580,770.00	114,295.50	1,384,858.00	766,893.00	225	250	9,150,536.00	170	207	1,691,121.00	846,176.50	101,919.50	77,061,844.50	3.22
12/20/2008	55,777,328.00	1104 (\$2.N), 1105 (\$5.N), 1106 (\$10.N) - 12/15/08	3,432,340.00	6	7	5,741,120.00	116,075.50	1,401,805.00	741,945.00	200	200	2,736,234.00	12	16	687,875.00	871,579.50	104,543.00	71,610,845.00	3.00
12/27/2008	57,597,885.00	1077 (\$1.N), 1110 (\$1.N) - 12/22/08	3,582,169.00	8	4	5,628,081.50	115,323.00	1,340,590.00	708,906.00	225	250	2,842,167.00	22	29	706,042.00	828,346.00	100,146.00	73,449,655.50	3.07
1/3/2009	57,582,115.00	0	3,784,763.00	5	6	5,690,220.50	120,519.50	1,406,807.00	934,000.00	325	525	3,190,457.00	37	46	780,850.00	885,674.00	106,736.50	74,482,142.50	3.12
1/10/2009	54,250,945.00	1135 (\$2.N), 1136 (\$5.N) - 1/5/09	3,582,400.00	7	8	5,476,890.00	116,674.50	1,403,531.00	1,267,847.00	675	900	2,701,275.00	12	16	681,574.00	868,919.00	104,109.50	70,454,165.00	2.95
1/17/2009	51,625,339.00	1137 (\$1.N), 1138 (\$3.N) - 1/12/09	3,668,302.50	9	10	5,443,159.00	112,605.00	1,387,958.00	778,563.00	200	200	2,683,707.00	22	12	675,416.00	852,987.00	98,907.50	67,326,944.00	2.82
1/24/2009	52,789,573.00	1115 (\$2.N), 1116 (\$5.N) - 1/19/09	3,723,835.50	11	12	5,514,547.50	115,827.50	1,376,695.00	860,483.00	225	325	2,692,611.00	16	21	676,936.00	836,996.00	99,541.00	68,687,045.50	2.87
1/31/2009	55,453,471.00	1080 (\$1.N), 1024 (\$20.N) - 1/26/09; 1062 (\$5.N) - 1/28/09	3,837,299.00	13	14	5,700,714.50	121,794.50	1,403,756.00	1,070,879.00	450	600	3,002,883.00	30	40	731,253.00	925,937.50	113,755.50	72,361,743.00	3.03
2/7/2009	62,247,711.00	1035 (\$2.N), 1144 (\$5.N), 1058 (\$10. N) - 2/2/09	4,092,117.00	15	16	6,336,717.00	134,543.00	1,481,812.00	842,746.00	200	225	3,509,032.00	50	60	829,550.00	1,007,529.00	120,267.50	80,602,024.50	3.37
2/14/2009	60,509,056.00	1146 (\$7.N), 1089 (\$1.N) - 2/9/09	4,119,193.00	17	18	6,363,028.00	133,901.50	1,445,616.00	1,013,987.00	325	450	4,082,572.00	73	85	928,813.00	1,010,898.50	120,068.50	79,727,133.50	3.34
2/21/2009	59,194,623.00	1046 (\$2.N), 1140 (\$5.N) - 2/16/09	4,326,401.00	19	20	6,038,807.50	128,493.00	1,439,312.00	1,268,803.00	600	750	5,614,471.00	103	120	1,178,133.00	988,075.00	115,703.50	80,292,822.00	3.36
2/28/2009	58,857,216.00	1132 (\$10.N), 1149 (\$1.N) - 2/23/09	4,526,304.00	21	22	6,084,457.50	128,979.50	1,439,607.00	1,668,414.00	925	1,150	7,676,975.00	145	171	1,504,895.00	973,121.00	114,171.00	82,974,140.00	3.47
3/7/2009	59,552,257.00	0	4,928,440.00	23	25	6,133,789.00	128,599.00	1,487,185.00	1,984,358.00	1,350	1,600	6,898,457.00	212	12	1,349,427.00	971,644.50	113,236.00	83,547,392.50	3.50
weekly change	1.18%		8.88%			0.81%	-0.30%	3.30%	18.94%			-10.14%			-10.33%	-0.15%	-0.82%	0.69%	
	SALES		SALES			SALES	SALES	SALES	SALES			SALES			SALES	SALES	SALES	SALES	% of Sales
Startup to date	34,921,515,894.00		10,377,972,111.00			3,447,060,790.00	9,623,099.00	2,156,246,229.00	452,331,217.00			1,024,353,917.50			240,794,780.00	65,071,833.00	11,191,816.50	52,914,295,659.00	100.0%
Calendar Year to date	539,612,219.00		38,602,819.00			55,901,291.00	175,670.50	13,507,775.00	11,172,080.00			40,397,014.00			8,926,965.00	8,864,174.50	1,051,009.00	718,211,017.00	100.0%
Fiscal Year to date 2009	1,440,929,892.00		98,875,064.00			148,341,837.50	3,137,269.00	37,090,219.00	26,065,499.00			98,215,322.50			22,586,746.00	22,854,861.50	2,853,013.00	1,900,949,723.50	100.0%