



WEEKLY SALES SUMMARY

Unaudited

[Week Ending: 03/10/2012](#)

Texas Lottery Commission
Fiscal Year to Date Sales Comparison
Unaudited

Through the week ending 03/10/2012 (28 weeks)

Sales by Game	FY 2010 *	FY 2011 **	FY 2012	\$ Change		% Change	
				FY 2012 to FY 2010	FY 2012 to FY 2011 to	FY 2012 to FY 2010	FY 2012 to FY 2011
Instants	\$ 1,494,837,320	\$ 1,502,427,868	\$ 1,594,830,911	\$ 99,993,591	\$ 92,403,043	6.7%	6.2%
Lotto Texas	142,766,716	92,947,990	91,782,588	-50,984,128	-1,165,402	-35.7%	-1.3%
Pick 3	144,392,686	145,831,465	142,286,693	-2,105,993	-3,544,772	-1.5%	-2.4%
Pick 3 Sum It Up	2,893,761	2,940,508	2,925,281	31,520	-15,227	1.1%	-0.5%
Cash Five	35,927,702	34,385,482	34,554,687	-1,373,015	169,205	-3.8%	0.5%
Texas Two Step	23,870,367	25,167,067	33,892,605	10,022,238	8,725,538	42.0%	34.7%
Mega Millions	99,203,758	100,394,261	81,752,219	-17,451,539	-18,642,042	-17.6%	-18.6%
Megaplier	22,153,482	20,643,593	18,020,584	-4,132,898	-2,623,009	-18.7%	-12.7%
Daily 4	27,919,291	30,327,220	33,703,182	5,783,892	3,375,963	20.7%	11.1%
Daily 4 Sum It Up	2,627,961	2,366,663	2,482,596	-145,365	115,933	-5.5%	4.9%
Powerball	11,073,135	46,063,857	83,328,125	72,254,990	37,264,268	-	80.9%
Power Play	2,581,451	11,031,989	15,324,307	12,742,856	4,292,318	-	38.9%
Total	\$ 2,010,247,628	\$ 2,014,527,962	\$ 2,134,883,776	\$ 124,636,149	\$ 120,355,815	6.2%	6.0%

* 2 extra days

** 1 extra day

Texas Lottery Commission
 Fiscal Year to Date Cumulative Average Sales Comparison
 Unaudited

Through the week ending 03/10/2012 (28 weeks)

Sales by Game	FY 2010	FY 2011	FY 2012
Instant	\$ 7,705,347	\$ 7,784,600	\$ 8,306,411
Lotto Texas	735,911	481,596	478,034
Pick 3	744,292	755,603	741,077
Pick 3 Sum It Up	14,916	15,236	15,236
Cash Five	185,194	178,163	179,972
Texas Two Step	123,043	130,399	176,524
Mega Millions	511,360	520,178	425,793
Megaplier	114,193	106,962	93,857
Daily 4	143,914	157,136	175,537
Daily 4 Sum It Up	13,546	12,263	12,930
Powerball	263,646 *	238,673	434,001
Power Play	61,463 *	57,161	79,814
Total	\$ 10,616,826	\$ 10,437,969	\$ 11,119,186

thru 03/13/2010

194 days

thru 03/12/2011

193 days

thr 03/10/2012

192 days

* 42 days

Texas Lottery Commission
Fiscal Year Over Year Change in Sales
Unaudited
FY 2012 Compared to FY 2011

Week	FY 2012 Week Ending	INSTANT TICKETS				ON-LINE GAMES				TOTAL SALES			
		FY 2012	FY 2011	Difference	% change - Cumulative Sales	FY 2012	FY 2011	Difference	% change - Cumulative Sales	FY 2012	FY 2011	Difference	% change - Cumulative Sales
1	9/3/2011**	\$25,147,181	\$31,659,033	(\$6,511,852)	-20.6%	\$9,704,561	\$11,430,717	(\$1,726,156)	-15.1%	\$34,851,742	\$43,089,750	(\$8,238,008)	-19.1%
2	9/10/2011	\$50,591,068	\$48,912,598	\$1,678,470	3.4%	\$17,681,853	\$16,398,160	\$1,283,693	7.8%	\$68,272,921	\$65,310,758	\$2,962,163	4.5%
3	9/17/2011	\$49,835,063	\$48,988,241	\$846,822	1.7%	\$16,842,326	\$17,166,827	(\$324,501)	-1.9%	\$66,677,389	\$66,155,068	\$522,321	0.8%
4	9/24/2011	\$49,777,138	\$48,471,310	\$1,305,828	2.7%	\$17,504,800	\$15,623,813	\$1,880,987	12.0%	\$67,281,938	\$64,095,123	\$3,186,815	5.0%
5	10/1/2011	\$51,040,274	\$50,145,138	\$895,136	1.8%	\$18,653,100	\$16,453,939	\$2,199,161	13.4%	\$69,693,374	\$66,599,077	\$3,094,297	4.6%
6	10/8/2011	\$53,715,157	\$50,918,591	\$2,796,566	5.5%	\$17,225,680	\$16,974,963	\$250,717	1.5%	\$70,940,837	\$67,893,554	\$3,047,283	4.5%
7	10/15/2011	\$51,942,121	\$49,096,011	\$2,846,110	5.8%	\$17,854,980	\$16,661,904	\$1,193,077	7.2%	\$69,797,101	\$65,757,915	\$4,039,187	6.1%
8	10/22/2011	\$52,837,769	\$50,158,946	\$2,678,823	5.3%	\$19,558,519	\$17,374,460	\$2,184,060	12.6%	\$72,396,288	\$67,533,406	\$4,862,883	7.2%
9	10/29/2011	\$52,206,644	\$49,775,287	\$2,431,357	4.9%	\$21,504,565	\$18,402,209	\$3,102,356	16.9%	\$73,711,209	\$68,177,496	\$5,533,713	8.1%
10	11/5/2011	\$56,265,310	\$53,337,848	\$2,927,462	5.5%	\$20,870,086	\$17,321,908	\$3,548,179	20.5%	\$77,135,396	\$70,659,756	\$6,475,641	9.2%
11	11/12/2011	\$55,682,645	\$52,285,479	\$3,397,166	6.5%	\$17,862,404	\$16,388,690	\$1,473,714	9.0%	\$73,545,049	\$68,674,169	\$4,870,880	7.1%
12	11/19/2011	\$54,978,079	\$52,424,036	\$2,554,043	4.9%	\$17,879,985	\$16,138,022	\$1,741,963	10.8%	\$72,858,064	\$68,562,058	\$4,296,006	6.3%
13	11/26/2011	\$53,942,448	\$51,262,518	\$2,679,930	5.2%	\$16,877,145	\$15,967,075	\$910,070	5.7%	\$70,819,593	\$67,229,593	\$3,590,000	5.3%
14	12/3/2011	\$57,153,469	\$56,385,259	\$768,210	1.4%	\$18,298,636	\$17,553,175	\$745,461	4.2%	\$75,452,105	\$73,938,434	\$1,513,671	2.0%
15	12/10/2011	\$55,318,284	\$56,540,048	(\$1,221,764)	-2.2%	\$19,033,326	\$17,703,352	\$1,329,975	7.5%	\$74,351,610	\$74,243,400	\$108,211	0.1%
16	12/17/2011	\$58,612,629	\$57,699,991	\$912,638	1.6%	\$20,045,279	\$18,465,282	\$1,579,997	8.6%	\$78,657,908	\$76,165,273	\$2,492,635	3.3%
17	12/24/2011	\$60,628,256	\$59,800,480	\$827,776	1.4%	\$22,572,986	\$19,635,771	\$2,937,215	15.0%	\$83,201,242	\$79,436,251	\$3,764,991	4.7%
18	12/31/2011	\$63,065,007	\$61,423,121	\$1,641,886	2.7%	\$19,948,521	\$26,122,257	(\$6,173,736)	-23.6%	\$83,013,528	\$87,545,378	(\$4,531,850)	-5.2%
19	1/7/2012	\$60,479,896	\$60,976,653	(\$496,757)	-0.8%	\$17,331,888	\$33,521,570	(\$16,189,682)	-48.3%	\$77,811,784	\$94,498,223	(\$16,686,439)	-17.7%
20	1/14/2012	\$57,689,526	\$50,099,433	\$7,590,093	15.2%	\$17,568,732	\$17,114,637	\$454,096	2.7%	\$75,258,258	\$67,214,070	\$8,044,189	12.0%
21	1/21/2012	\$58,704,854	\$53,143,646	\$5,561,208	10.5%	\$19,886,540	\$18,091,208	\$1,795,332	9.9%	\$78,591,394	\$71,234,854	\$7,356,540	10.3%
22	1/28/2012	\$57,611,325	\$54,096,128	\$3,515,197	6.5%	\$20,641,697	\$17,446,156	\$3,195,542	18.3%	\$78,253,022	\$71,542,284	\$6,710,739	9.4%
23	2/4/2012	\$65,553,366	\$53,433,592	\$12,119,774	22.7%	\$23,689,855	\$17,388,581	\$6,301,274	36.2%	\$89,243,221	\$70,822,173	\$18,421,048	26.0%
24	2/11/2012	\$75,070,485	\$60,277,094	\$14,793,391	24.5%	\$28,361,583	\$18,233,038	\$10,128,545	55.6%	\$103,432,068	\$78,510,132	\$24,921,936	31.7%
25	2/18/2012	\$66,679,947	\$61,536,763	\$5,143,184	8.4%	\$19,588,615	\$19,387,518	\$201,097	1.0%	\$86,268,562	\$80,924,281	\$5,344,281	6.6%
26	2/25/2012	\$64,868,899	\$59,046,203	\$5,822,696	9.9%	\$19,965,388	\$20,054,404	(\$89,016)	-0.4%	\$84,834,287	\$79,100,607	\$5,733,680	7.2%
27	3/3/2012	\$67,135,065	\$60,537,060	\$6,598,005	10.9%	\$20,947,181	\$19,478,807	\$1,468,374	7.5%	\$88,082,246	\$80,015,867	\$8,066,379	10.1%
28	3/10/2012	\$68,299,006	\$59,997,361	\$8,301,645	13.8%	\$22,152,639	\$19,601,658	\$2,550,982	13.0%	\$90,451,645	\$79,599,019	\$10,852,627	13.6%
29	3/17/2012		\$57,835,554				\$21,189,563				\$79,025,117		
30	3/24/2012		\$57,911,940				\$29,729,651				\$87,641,591		
31	3/31/2012		\$60,407,139				\$19,519,264				\$79,926,403		
32	4/7/2012		\$60,704,285				\$19,455,317				\$80,159,602		
33	4/14/2012		\$57,663,398				\$17,866,867				\$75,530,265		
34	4/21/2012		\$56,740,216				\$17,429,326				\$74,169,542		
35	4/28/2012		\$58,042,011				\$17,104,548				\$75,146,559		
36	5/5/2012		\$66,509,159				\$17,744,833				\$84,253,992		
37	5/12/2012		\$53,769,716				\$17,783,942				\$71,553,658		
38	5/19/2012		\$53,704,228				\$18,623,882				\$72,328,110		
39	5/26/2012		\$52,310,134				\$19,115,921				\$71,426,055		
40	6/2/2012		\$53,256,725				\$18,462,603				\$71,719,328		
41	6/9/2012		\$54,293,614				\$17,213,019				\$71,506,633		
42	6/16/2012		\$52,688,230				\$17,534,413				\$70,222,643		

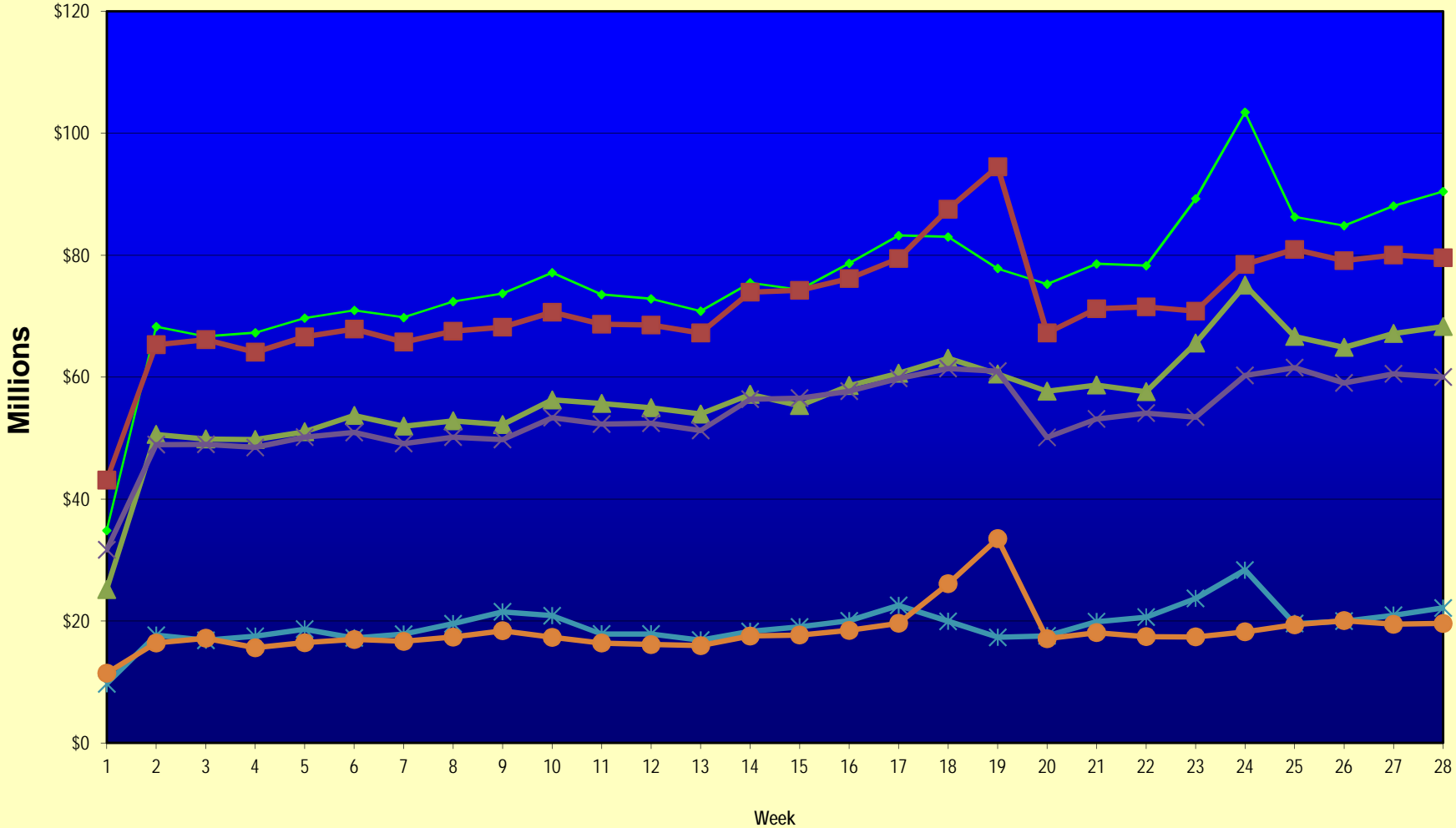
Note: Week 1 is not a full week of sales as this report is prepared on a Fiscal Year basis.

Texas Lottery Commission
Fiscal Year Over Year Change in Sales
Unaudited
FY 2012 Compared to FY 2011

Week	FY 2012 Week Ending	INSTANT TICKETS				ON-LINE GAMES				TOTAL SALES			
		FY 2012	FY 2011	Difference	% change - Cumulative Sales	FY 2012	FY 2011	Difference	% change - Cumulative Sales	FY 2012	FY 2011	Difference	% change - Cumulative Sales
43	6/23/2012		\$53,174,595				\$17,086,937				\$70,261,532		
44	6/30/2012		\$53,687,509				\$18,406,785				\$72,094,294		
45	7/7/2012		\$53,054,685				\$16,211,989				\$69,266,674		
46	7/14/2012		\$51,161,290				\$16,945,733				\$68,107,023		
47	7/21/2012		\$50,807,750				\$17,362,213				\$68,169,963		
48	7/28/2012		\$51,277,179				\$18,870,764				\$70,147,943		
49	8/4/2012		\$53,320,489				\$20,922,034				\$74,242,523		
50	8/11/2012		\$50,914,022				\$19,467,124				\$70,381,146		
51	8/18/2012		\$49,905,898				\$17,419,045				\$67,324,943		
52	8/25/2012		\$49,424,242				\$16,837,474				\$66,261,716		
	8/31/2012		\$27,274,804				\$8,600,118				\$35,874,922		
Total thru Current Week		\$1,594,830,911	\$1,502,427,868	\$92,403,043	6.2%	\$540,052,865	\$512,100,094	\$27,952,772	5.5%	\$2,134,883,776	\$2,014,527,962	\$120,355,815	6.0%
Fiscal Year Total		\$1,594,830,911	\$2,842,266,680			\$540,052,865	\$969,003,455			\$2,134,883,776	\$3,811,270,135		

** FY 2011 includes 4 days; FY 2012 includes 3 days

Texas Lottery Commission Fiscal Year Over Year Change in Sales



◆ Total Sales 2012
 ■ Total Sales 2011
 ▲ Instant Tickets 2012
 ✕ Instant Tickets 2011
 ✱ On-Line Games 2012
 ● On-Line Games 2011

Note: Week 1 is not a full week of sales as this report is prepared on a Fiscal Year basis.

Texas Lottery Commission
Instant Tickets by Price Point
Sales, Prize Expense, Sales Contribution and Payout Percentage With Year Over Year Changes
Unaudited

Fiscal Year	Price Point	# of Active Games	FY Sales	% of Instant Ticket Sales	Year over Year Change in Sales	FY Prize Expense	Year over Year Change in Prize Expense	FY Sales Contribution	Year over Year Change in Contribution	Average Prize Payout %	Year over Year Change in Payout %
2011	\$1.00	30	112,658,918	7.5%		69,044,259		43,614,659		61.3%	2.0%
thru	\$2.00	30	210,868,404	14.0%		138,122,459		72,745,945		65.5%	0.6%
3/12/2011	\$3.00	17	184,624,578	12.3%		121,107,522		63,517,056		65.6%	0.0%
	\$5.00	40	474,982,240	31.6%		322,906,933		152,075,307		68.0%	-0.1%
	\$7.00	7	64,982,148	4.3%		44,177,684		20,804,464		68.0%	0.0%
	\$10.00	13	215,582,820	14.3%		152,857,938		62,724,882		70.9%	1.4%
	\$20.00	6	187,522,060	12.5%		139,152,062		48,369,998		74.2%	1.5%
	\$50.00	2	51,206,700	3.4%		39,762,639		11,444,061		77.7%	4.2%
Total		145	\$1,502,427,868			\$1,027,131,496		\$475,296,372		68.4%	0.9%
2012	\$1.00	30	119,023,610	7.5%		72,691,648		46,331,962		61.1%	0.5%
thru	\$2.00	31	216,061,998	13.5%		140,481,356		75,580,642		65.0%	-0.8%
3/10/2012	\$3.00	16	195,127,440	12.2%		127,938,938		67,188,502		65.6%	0.0%
	\$5.00	40	508,475,435	31.9%		345,936,908		162,538,527		68.0%	0.2%
	\$7.00	4	18,188,408	1.1%		12,368,000		5,820,408		68.0%	0.0%
	\$10.00	16	258,822,540	16.2%		182,539,895		76,282,645		70.5%	-0.7%
	\$20.00	6	214,028,080	13.4%		159,747,160		54,280,920		74.6%	0.0%
	\$50.00	2	65,103,400	4.1%		50,557,715		14,545,685		77.7%	0.0%
Total		145	\$1,594,830,911			\$1,092,261,622		\$502,569,289		68.5%	0.0%
Variance	\$1.00	0	6,364,692		5.6%	3,647,390	5.3%	2,717,302	6.2%	-0.21%	
2012 to	\$2.00	1	5,193,594		2.5%	2,358,898	1.7%	2,834,696	3.9%	-0.48%	
2011	\$3.00	-1	10,502,862		5.7%	6,831,416	5.6%	3,671,446	5.8%	-0.03%	
	\$5.00	0	33,493,195		7.1%	23,029,975	7.1%	10,463,220	6.9%	0.05%	
	\$7.00	-3	-46,793,740		-72.0%	-31,809,684	-72.0%	-14,984,056	-72.0%	0.02%	
	\$10.00	3	43,239,720		20.1%	29,681,957	19.4%	13,557,763	21.6%	-0.38%	
	\$20.00	0	26,506,020		14.1%	20,595,097	14.8%	5,910,923	12.2%	0.43%	
	\$50.00	0	13,896,700		27.1%	10,795,076	27.1%	3,101,624	27.1%	0.01%	
Total		0	\$92,403,043		6.2%	\$65,130,125	6.3%	\$27,272,918	5.7%	0.12%	

Notes - Instant Ticket Variances

Texas Lottery Commission
Instant Tickets by Price Point
Sales, Prize Expense, Sales Contribution and Payout Percentage With Year Over Year Changes
 Unaudited

		FY 2012		FY 2011		Difference
Sales	\$1 - \$7	\$1,056,876,891		\$1,048,116,288		\$8,760,603
Prize Exp.	\$1 - \$7	\$699,416,852		\$695,358,856		\$4,057,995
Sales Cont.	\$1 - \$7	\$357,460,039		\$352,757,432		\$4,702,608
Prize Exp. %	\$1 - \$7	66.2%		66.3%		-0.2%
		FY 2012		FY 2011		Difference
Sales	\$10 - \$50	\$537,954,020		\$454,311,580		\$83,642,440
Prize Exp.	\$10 - \$50	\$392,844,770		\$331,772,640		\$61,072,130
Sales Cont.	\$10 - \$50	\$145,109,250		\$122,538,940		\$22,570,310
Prize Exp. %	\$10 - \$50	73.0%		73.0%		0.0%
		FY 2012		FY 2011		Difference
Sales	Instant	\$1,594,830,911		\$1,502,427,868		\$92,403,043
Prize Exp.	Instant	\$1,092,261,622		\$1,027,131,496		\$65,130,125
Sales Cont.	Instant	\$502,569,289		\$475,296,372		\$27,272,918
Prize Exp. %	Instant	68.5%		68.4%		0.1%

		FY 2012		FY 2011		Difference
Sales	\$1 - \$10	\$1,315,699,431		\$1,263,699,108		\$52,000,323
Prize Exp.	\$1 - \$10	\$881,956,747		\$848,216,795		\$33,739,952
Sales Cont.	\$1 - \$10	\$433,742,684		\$415,482,313		\$18,260,371
Prize Exp. %	\$1 - \$10	67.0%		67.1%		-0.1%
		FY 2012		FY 2011		Difference
Sales	\$20 - \$50	\$279,131,480		\$238,728,760		\$40,402,720
Prize Exp.	\$20 - \$50	\$210,304,875		\$178,914,701		\$31,390,173
Sales Cont.	\$20 - \$50	\$68,826,605		\$59,814,059		\$9,012,547
Prize Exp. %	\$20 - \$50	75.3%		74.9%		0.4%
		FY 2012		FY 2011		Difference
Sales	Instant	\$1,594,830,911		\$1,502,427,868		\$92,403,043
Prize Exp.	Instant	\$1,092,261,622		\$1,027,131,496		\$65,130,125
Sales Cont.	Instant	\$502,569,289		\$475,296,372		\$27,272,918
Prize Exp. %	Instant	68.5%		68.4%		0.1%

Texas Lottery Commission
Weekly Sales Summary
& Comparison to Previous Week
 Unaudited

	Week Ending 03/10/2012	% of Sales	Week Ending 03/03/2012	% of Sales	\$ change	% change
	<u>THIS WEEK</u>		<u>LAST WEEK</u>			
Total Sales	<u>\$90,451,645</u>		<u>\$88,082,246</u>		<u>\$2,369,400</u>	2.69%
Instant Tickets	<u>\$68,299,006</u>	75.5%	<u>\$67,135,065</u>	76.2%	<u>\$1,163,941</u>	1.73%
Lotto	\$3,239,012	3.6%	\$3,166,827	3.6%	\$72,185	2.28%
Pick 3	\$5,637,055	6.2%	\$5,754,954	6.5%	-\$117,899	-2.05%
Pick 3 Sum It Up	\$121,996	0.1%	\$121,213	0.1%	\$783	0.65%
Cash Five	\$1,342,258	1.5%	\$1,355,233	1.5%	-\$12,975	-0.96%
Texas Two Step	\$1,564,625	1.7%	\$1,129,262	1.3%	\$435,363	38.55%
Mega Millions	\$4,549,049	5.0%	\$3,675,723	4.2%	\$873,326	23.76%
Megaplier	\$919,907	1.0%	\$782,787	0.9%	\$137,120	17.52%
Daily 4	\$1,359,810	1.5%	\$1,379,907	1.6%	-\$20,097	-1.46%
Daily 4 Sum It Up	\$98,371	0.1%	\$101,888	0.1%	-\$3,517	-3.45%
Powerball	\$2,927,846	3.2%	\$3,066,811	3.5%	-\$138,965	-4.53%
Power Play	\$392,711	0.4%	\$412,577	0.5%	-\$19,866	-4.82%
Total Online Sales	<u>\$22,152,639</u>		<u>\$20,947,181</u>		<u>\$1,205,459</u>	5.75%

* Totals may not sum due to rounding.

Texas Lottery Commission
Weekly Sales Summary
Unaudited

INSTANT TICKETS
TOP TEN SELLING GAMES

For the Week Ending : 03/10/2012

Rank	Price Point	Game	Sales (Millions)
1	\$ 10	\$200 MILLION CASH SPECTACULAR	\$ 4.453
2	\$ 5	EMERALD 7'S	\$ 3.616
3	\$ 20	MAXIMUM MILLIONS	\$ 3.318
4	\$ 5	\$100,000 RICHES	\$ 2.970
5	\$ 20	\$500,000,000 FRENZY	\$ 2.859
6	\$ 50	CASINO ACTION	\$ 2.837
7	\$ 5	TRIPLE 7'S	\$ 2.743
8	\$ 10	BIG MONEY	\$ 2.608
9	\$ 3	BONUS CASHWORD	\$ 2.283
10	\$ 3	LOTERIA	\$ 2.214

Texas Lottery Commission
Prize Payout Tracking Report
Unaudited

Through Week Ending 03/10/2012

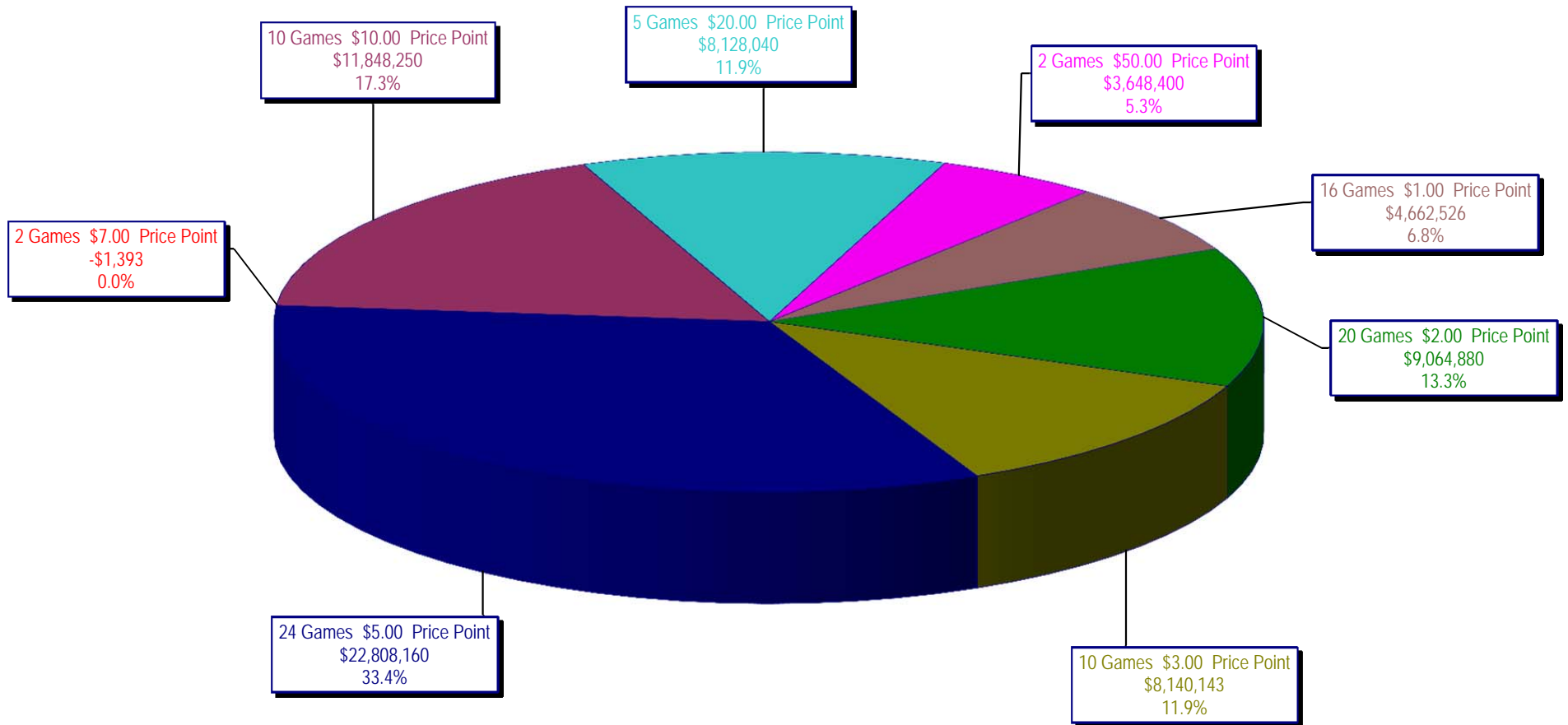
On-Line Sales

		FY Sales Through Week Ending 3/10/2012		FY Prize Expense Through Week Ending 3/10/2012	Actual* Prize Payout	Base Payout (Prize Pool)
Lotto	\$	91,782,588	\$	57,152,085	62.27%	50.00%
Pick 3		142,286,693		66,762,610	46.92%	50.00%
Pick 3 Sum It Up		2,925,281		1,378,131	47.11%	50.00%
Cash Five		34,554,687		17,970,896	52.01%	50.00%
Texas Two Step		33,892,605		16,985,720	50.12%	50.00%
Mega Millions		81,752,219		40,099,252	49.05%	50.00%**
Megaplier		18,020,584		9,075,506	50.36%	N/A
Daily 4		33,703,182		15,056,818	44.67%	50.00%
Daily 4 Sum It Up		2,482,596		1,025,349	41.30%	50.00%
Powerball		83,328,125		39,551,587	47.46%	50.00%**
Power Play		15,324,307		7,073,070	46.16%	N/A
Totals	\$	540,052,865	\$	272,131,024	50.39%	

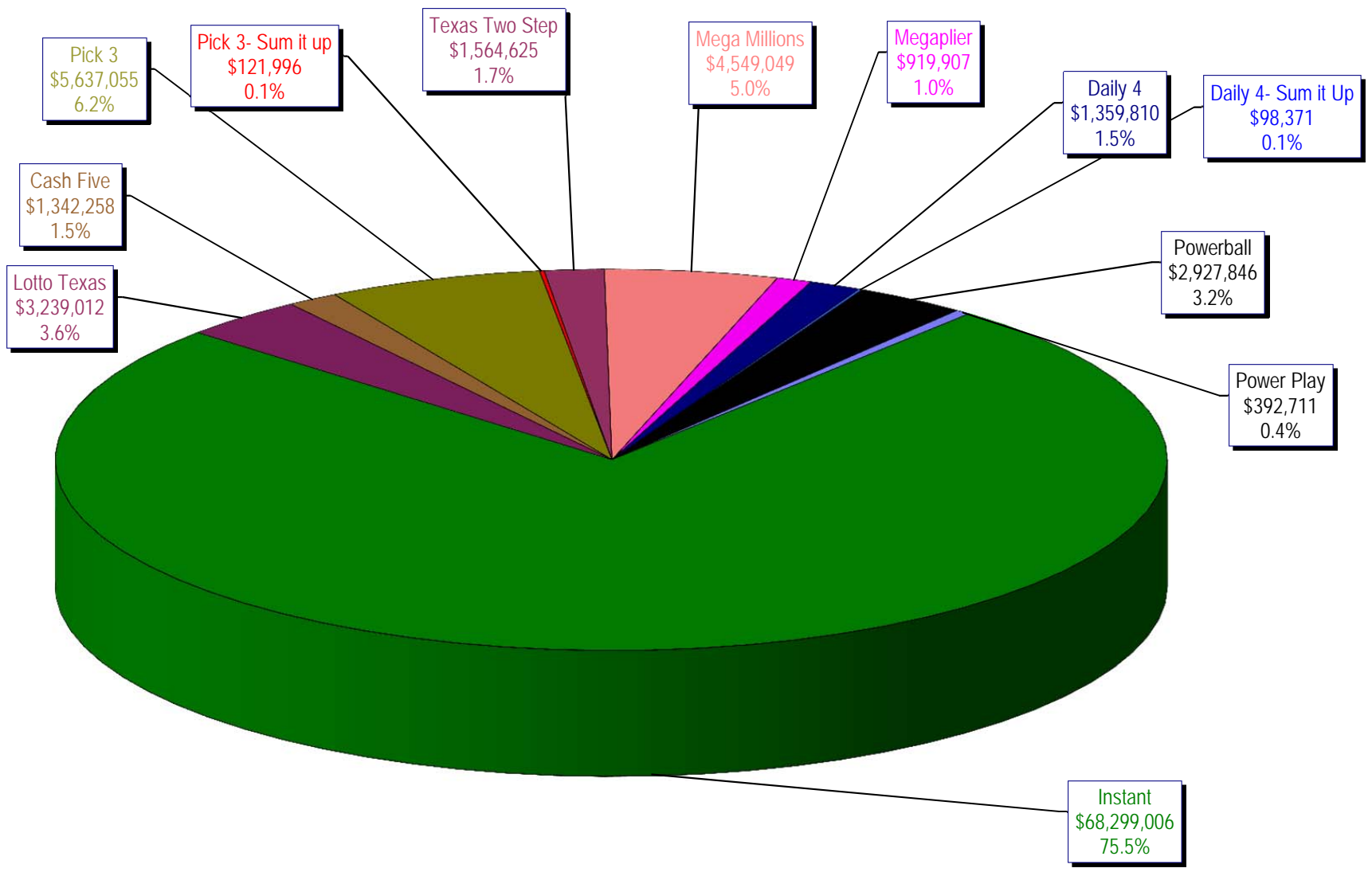
* Before Unclaimed Prizes

** Estimated; depends on # of guaranteed prizes won in Texas

Texas Lottery Commission
Instant Ticket Sales
For the Week Ending 03/10/2012
(Unaudited)



Texas Lottery Commission
All Game Sales
For the Week Ending 03/10/2012
(Unaudited)



Texas Lottery Commission - Weekly Sales Summary for FY 2012 (Unaudited)

Week Ended	Instant Games	New Games & Dates	Lotto Texas		Jackpot W S		Pick 3	Pick 3 Sum It Up	Cash Five	Texas Two Step	Jackpot M TH		Mega Millions	Jackpot T F		Megaplier	Daily 4	Daily 4 Sum It Up	Powerball	Jackpot W S		Power Play	Total	Per Cap.
9/3/2011	52,421,985	1340 (\$1,N); 1310 (\$2, N) - 08/29/11	3,710,974	23	24	5,228,940	100,997	1,239,134	989,988	225	300	2,248,664	21	29	539,246	1,221,178	93,318	2,401,555	75	91	530,686	70,726,664	2.81	
9/10/2011	50,591,068	1360 (\$3, N) - 09/05/11	3,329,350	25	4	5,103,026	99,259	1,198,563	935,771	450	200	2,387,766	37	44	557,225	1,180,505	88,443	2,295,315	107	20	506,631	68,272,921	2.71	
9/17/2011	49,835,063	0	3,031,798	5	6	4,953,079	100,990	1,210,562	961,592	225	300	2,801,526	54	65	626,459	1,125,230	83,532	1,560,522	25	20	387,037	66,677,389	2.64	
9/24/2011	49,777,138	1362(\$1, N); 1363(\$5,N); 1364(\$5,N) - 09/19/11	3,083,973	7	8	4,819,453	97,999	1,200,444	1,283,472	450	600	3,206,022	75	86	692,909	1,092,294	82,198	1,561,655	25	30	384,383	67,281,938	2.67	
10/1/2011	51,040,274	1365(\$2,N) - 09/26/11	3,196,730	9	10	4,846,896	97,026	1,215,715	1,146,613	800	200	4,033,330	96	113	830,660	1,096,271	83,993	1,693,809	37	47	412,058	69,693,374	2.76	
10/8/2011	53,715,157	1366(\$1,N) - 10/03/11	3,231,892	11	12	5,064,771	102,919	1,252,733	1,004,251	225	300	2,176,684	12	14	527,777	1,188,636	92,825	2,103,034	58	71	480,159	70,940,837	2.81	
10/15/2011	51,942,121	1367 (\$7, N) - 10/10/11	3,230,925	13	14	4,776,985	99,008	1,214,385	1,337,436	450	625	2,260,036	22	30	542,787	1,132,415	84,772	2,613,215	86	105	563,017	69,797,101	2.77	
10/22/2011	52,837,769	1369 (\$1, N); 1370 (\$5, N) - 10/17/11	3,250,317	15	16	4,784,201	98,306	1,202,768	1,887,302	825	1,050	2,386,255	39	48	561,705	1,130,353	83,722	3,477,867	124	148	695,724	72,396,288	2.87	
10/29/2011	52,206,644	1371 (\$2, N) - 10/24/11	3,302,201	17	18	4,685,786	95,887	1,186,987	2,055,399	1,300	1,550	2,592,752	57	67	596,631	1,107,441	82,921	4,895,300	173	203	903,261	73,711,209	2.92	
11/5/2011	56,265,310	1373 (\$10, N) - 10/31/11	3,570,825	19	20	5,165,835	105,793	1,240,514	910,036	200	200	2,497,308	78	12	583,481	1,222,706	92,619	4,617,172	245	20	863,799	77,135,396	3.06	
11/12/2011	55,682,645	1375 (\$3, N); 1374 (\$1, N) - 11/07/11	3,673,137	21	22	5,298,645	109,575	1,268,630	961,349	225	200	2,362,698	15	22	552,133	1,235,272	92,025	1,861,697	25	35	447,243	73,545,049	2.92	
11/19/2011	54,978,079	1376(\$2, N); 1377 (\$5, N) - 11/14/11	3,575,231	23	24	5,216,095	106,956	1,246,366	1,059,355	225	325	2,300,050	30	40	550,825	1,224,365	89,978	2,033,222	46	60	477,542	72,858,064	2.89	
11/26/2011	53,942,448	1372 (\$5, N) - 11/21/11	3,499,908	25	26	4,943,420	100,352	1,179,174	998,175	500	200	2,377,399	47	55	555,760	1,215,090	90,416	1,527,546	20	25	389,905	70,819,593	2.81	
12/3/2011	57,153,469	0	3,744,456	27	28	5,267,602	108,544	1,264,649	938,225	225	200	2,830,996	64	75	636,924	1,278,857	95,379	1,708,763	31	40	424,242	75,452,105	2.99	
12/10/2011	55,318,284	1378 (\$1, N); 1322 (\$5, N) - 12/5/11; 1389 (\$1, N) - 12/6/11	3,666,072	29	30	5,168,509	106,265	1,243,957	1,030,979	225	325	3,462,326	87	100	736,281	1,235,834	89,131	1,850,570	52	67	443,403	74,351,610	2.95	
12/17/2011	58,612,629	1383 (\$3,N) - 12/12/11	2,963,151	4	5	5,096,413	103,606	1,257,263	1,339,991	475	650	4,412,520	116	135	882,759	1,240,640	89,229	2,163,468	78	91	496,239	78,657,908	3.12	
12/24/2011	60,628,256	1379 (\$1, N); 1317 (\$2, N); 1380 (\$5, N) - 12/19/11	3,265,301	6	7	5,257,800	105,568	1,269,335	943,509	200	225	5,729,832	152	173	1,095,360	1,263,815	88,757	2,933,837	104	125	619,872	83,201,242	3.30	
12/31/2011	63,065,007	0	3,368,593	8	9	5,211,663	107,395	1,275,257	1,200,536	325	450	4,358,985	206	12	878,865	1,244,035	88,079	1,788,226	20	25	426,888	83,013,528	3.29	
1/7/2012	60,479,896	1381 (\$5,N); 1277 (\$50,N) - 1/3/12; 1429 (\$5,N); 1401 (\$10, N) - 1/4/12	3,193,532	10	11	5,246,112	108,060	1,281,653	1,135,472	625	200	2,298,815	15	25	550,191	1,240,736	90,116	1,763,484	30	44	423,718	77,811,784	3.09	
1/14/2012	57,689,526	1382 (\$2,N); 1232 (\$10, N) - 1/9/12	3,259,338	12	13	5,061,130	103,687	1,270,289	1,059,875	225	350	2,542,675	33	42	587,013	1,229,792	87,637	1,921,683	54	66	445,614	75,258,258	2.98	
1/21/2012	58,704,854	1384 (\$1, N); 1385 (\$5,N) - 1/16/12	3,310,397	14	15	5,033,947	104,874	1,252,621	1,422,729	500	650	2,696,266	50	60	594,142	1,204,955	88,136	3,611,989	80	100	566,485	78,591,394	3.12	
1/28/2012	57,611,325	0	3,295,592	16	17	4,996,799	103,779	1,241,568	1,940,577	875	1,100	2,426,609	71	12	544,967	1,197,885	85,833	4,311,550	120	146	496,540	78,253,022	3.10	
2/4/2012	65,553,366	1434 (\$2, N); 1142 (\$20, N) - 01/30/12	3,526,781	18	19	5,493,300	112,992	1,316,899	2,230,312	1,350	1,650	2,212,907	15	23	525,610	1,315,424	96,711	6,186,774	170	200	672,146	89,243,221	3.54	
2/11/2012	75,070,485	1361 (\$5,N); 1362 (\$1, N); 1388 (\$3, N) - 02/06/12	3,569,296	20	21	5,678,360	119,455	1,321,397	983,011	200	225	2,388,865	32	41	562,554	1,332,218	97,927	10,633,290	250	325	1,675,211	103,432,068	4.10	
2/18/2012	66,679,947	1433 (\$10, N) - 02/13/12	3,230,364	22	4	5,467,216	114,573	1,316,645	955,165	200	200	2,625,022	51	61	605,640	1,294,454	95,383	3,310,544	40	50	573,610	86,268,562	3.42	
2/25/2012	64,868,899	1253 (\$2,N); 1431 (\$5,N) - 02/20/2012	3,046,687	5	6	5,452,765	115,785	1,312,655	980,607	225	200	2,972,219	72	83	659,936	1,283,389	92,775	3,590,429	60	70	458,143	84,834,287	3.36	
3/3/2012	67,135,065	1393 (\$1,N); 1437 (\$5, N) - 02/27/2012	3,166,827	7	8	5,754,954	121,213	1,355,233	1,129,262	225	350	3,675,723	94	108	782,787	1,379,907	101,888	3,066,811	40	50	412,577	88,082,246	3.49	
3/10/2012	68,299,006	1395 (\$2, N); 1396 (\$5, N); - 03/05/2012; 1349 (\$10, N) - 03/08/2012	3,239,012	9	10	5,637,055	121,996	1,342,258	1,564,625	525	700	4,549,049	127	148	919,907	1,359,810	98,371	2,927,846	60	40	392,711	90,451,645	3.59	
weekly change	1.7%		2.3%			-2.0%	0.6%	-1.0%	38.6%			23.8%		17.5%	-1.5%	-3.5%	-4.5%			-4.8%	2.7%			
SALES			SALES			SALES		SALES	SALES	SALES	SALES	SALES		SALES	SALES	SALES	SALES	SALES	SALES	SALES	SALES	SALES	% of Sales	
Startup to date	43,470,189,113		10,999,788,647			4,269,647,014	26,228,613	2,355,463,348	611,727,072			1,567,183,944			358,155,755	234,705,871	25,452,035	239,720,009			51,587,652	64,417,983,043	100.0%	
Calendar Year to date	642,092,369		32,837,826			53,821,635	1,126,411	13,011,218	13,401,635			28,388,150			6,332,747	12,838,568	934,774	41,324,400			6,116,755	852,226,486	100.0%	
Fiscal Year to date 2012	1,594,830,911		91,782,588			142,286,693	2,925,281	34,554,687	33,892,605			81,752,219			18,020,584	33,703,182	2,482,596	83,328,125			15,324,307	2,134,883,776	100.0%	