



WEEKLY SALES SUMMARY

Unaudited

Week Ending: 3/12/2016

Texas Lottery Commission
Fiscal Year to Date Sales Comparison
Unaudited

Through the Week Ending 3/12/2016 (28 Weeks)

Sales by Game	FY 2014 *	FY 2015 **	FY 2016	\$ Change		% Change	
				FY 2016 to FY 2014	FY 2016 to FY 2015	FY 2016 to FY 2014	FY 2016 to FY 2015
Scratch Tickets	\$ 1,778,405,446	\$ 1,843,024,905	\$ 1,959,105,563	\$ 180,700,117	\$ 116,080,658	10.2%	6.3%
Lotto Texas	71,705,445	66,193,763	68,822,605	-2,882,840	2,628,843	-4.0%	4.0%
Lotto Extra	9,464,246	10,156,439	11,824,573	2,360,327	1,668,135	24.9%	16.4%
Pick 3	136,427,653	135,183,594	136,205,540	-222,113	1,021,946	-0.2%	0.8%
Pick 3 Sum It Up	2,712,704	2,660,829	2,782,340	69,636	121,511	2.6%	4.6%
Cash Five	28,614,844	26,997,599	25,091,248	-3,523,596	-1,906,351	-12.3%	-7.1%
Texas Two Step	29,924,919	28,558,184	28,868,082	-1,056,837	309,898	-3.5%	1.1%
Mega Millions	124,753,865	86,520,890	69,594,779	-55,159,086	-16,926,111	-44.2%	-19.6%
Megaplier	26,123,032	19,885,246	17,482,098	-8,640,934	-2,403,148	-33.1%	-12.1%
Daily 4	45,035,547	46,237,155	47,924,536	2,888,989	1,687,382	6.4%	3.6%
Daily 4 Sum It Up	2,790,794	2,723,678	2,519,943	-270,851	-203,735	-9.7%	-7.5%
Powerball	125,149,032	133,800,107	325,619,339	200,470,307	191,819,232	160.2%	143.4%
Power Play	14,670,106	16,135,582	35,199,838	20,529,732	19,064,256	139.9%	118.2%
All or Nothing	26,208,913	20,940,476	16,891,924	-9,316,989	-4,048,552	-35.5%	-19.3%
Monopoly	- ¹	2,656,370	-	-	-2,656,370	-	-100.0%
Texas Triple Chance	-	-	14,391,898	14,391,898	14,391,898	-	-
Total	\$ 2,421,986,545	\$ 2,441,674,815	\$ 2,762,324,305	\$ 340,337,760	\$ 320,649,491	14.1%	13.1%

* 2 extra days

** 1 extra day

¹ Monopoly sales were suspended after draw on 12/12/14

Texas Lottery Commission
Fiscal Year to Date Cumulative Average Sales Comparison
Unaudited

Through the Week Ending 3/12/2016 (28 Weeks)

Sales by Game	FY 2014	FY 2015	FY 2016
Scratch Tickets	\$ 9,073,497	\$ 9,451,410	\$ 10,098,482
Lotto Texas	365,844	339,455	354,756
Lotto Extra	48,287	52,084	60,951
Pick 3	696,059	693,249	702,090
Pick 3 Sum It Up	13,840	13,645	14,342
Cash Five	145,994	138,449	129,336
Texas Two Step	152,678	146,452	148,805
Mega Millions	636,499	443,697	358,736
Megaplier	133,281	101,976	90,114
Daily 4	229,773	237,114	247,034
Daily 4 Sum It Up	14,239	13,968	12,989
Powerball	638,515	686,154	1,678,450
Power Play	74,847	82,747	181,442
All or Nothing	133,719	107,387	87,072
Monopoly	- **	48,298	-
Texas Triple Chance	- <u> </u>	- <u> </u> *	85,666 <u> </u>
Total	\$ <u> 12,357,074</u>	\$ <u> 12,556,085</u>	\$ <u> 14,250,266</u>

thru 3/15/2014
196 days

**

thru 3/14/2015
195 days
55 days

*

thru 3/12/2016
194 days
168 days

Texas Lottery Commission
Fiscal Year Over Year Change in Sales
Unaudited
FY 2016 Compared to FY 2015

			SCRATCH TICKETS				DRAW GAMES				TOTAL SALES			
FY 2016			% change -				% change -				% change -			
Week	Week	Ending	FY 2016	FY 2015	Difference	Cumulative Sales	FY 2016	FY 2015	Difference	Cumulative Sales	FY 2016	FY 2015	Difference	Cumulative Sales
1	9/5/2015 *		\$49,534,249	\$54,911,801	(\$5,377,552)	-9.8%	\$17,091,724	\$17,482,488	(\$390,765)	-2.2%	\$66,625,973	\$72,394,289	(\$5,768,317)	-8.0%
2	9/12/2015		\$61,566,291	\$61,436,533	\$129,758	0.2%	\$20,630,922	\$19,097,081	\$1,533,841	8.0%	\$82,197,213	\$80,533,614	\$1,663,599	2.1%
3	9/19/2015		\$63,530,657	\$60,959,234	\$2,571,423	4.2%	\$20,327,253	\$20,567,894	(\$240,641)	-1.2%	\$83,857,910	\$81,527,128	\$2,330,782	2.9%
4	9/26/2015		\$61,731,400	\$59,710,056	\$2,021,344	3.4%	\$22,252,290	\$19,920,828	\$2,331,462	11.7%	\$83,983,690	\$79,630,884	\$4,352,806	5.5%
5	10/3/2015		\$67,048,415	\$62,119,854	\$4,928,561	7.9%	\$25,436,791	\$18,531,421	\$6,905,370	37.3%	\$92,485,206	\$80,651,275	\$11,833,931	14.7%
6	10/10/2015		\$66,049,706	\$61,253,665	\$4,796,041	7.8%	\$18,138,977	\$18,985,332	(\$846,355)	-4.5%	\$84,188,683	\$80,238,997	\$3,949,687	4.9%
7	10/17/2015		\$65,073,593	\$60,230,048	\$4,843,545	8.0%	\$17,776,414	\$19,538,402	(\$1,761,988)	-9.0%	\$82,850,007	\$79,768,450	\$3,081,558	3.9%
8	10/24/2015		\$64,087,437	\$62,384,112	\$1,703,325	2.7%	\$18,450,464	\$21,475,643	(\$3,025,179)	-14.1%	\$82,537,901	\$83,859,755	(\$1,321,854)	-1.6%
9	10/31/2015		\$66,025,374	\$63,404,713	\$2,620,661	4.1%	\$19,568,150	\$23,568,817	(\$4,000,668)	-17.0%	\$85,593,524	\$86,973,530	(\$1,380,007)	-1.6%
10	11/7/2015		\$68,137,192	\$65,486,719	\$2,650,473	4.0%	\$20,398,351	\$23,749,032	(\$3,350,681)	-14.1%	\$88,535,543	\$89,235,751	(\$700,208)	-0.8%
11	11/14/2015		\$65,449,428	\$61,745,521	\$3,703,907	6.0%	\$20,169,382	\$17,449,604	\$2,719,779	15.6%	\$85,618,810	\$79,195,125	\$6,423,686	8.1%
12	11/21/2015		\$68,364,421	\$66,353,583	\$2,010,838	3.0%	\$17,174,606	\$17,108,084	\$66,522	0.4%	\$85,539,027	\$83,461,667	\$2,077,360	2.5%
13	11/28/2015		\$61,091,628	\$60,471,184	\$620,444	1.0%	\$17,168,993	\$17,303,129	(\$134,136)	-0.8%	\$78,260,621	\$77,774,313	\$486,309	0.6%
14	12/5/2015		\$67,830,827	\$66,648,696	\$1,182,131	1.8%	\$19,252,418	\$18,862,425	\$389,994	2.1%	\$87,083,245	\$85,511,121	\$1,572,125	1.8%
15	12/12/2015		\$68,324,452	\$65,708,630	\$2,615,822	4.0%	\$19,529,408	\$18,649,598	\$879,811	4.7%	\$87,853,860	\$84,358,228	\$3,495,633	4.1%
16	12/19/2015		\$71,041,258	\$68,551,298	\$2,489,960	3.6%	\$20,824,840	\$19,051,100	\$1,773,740	9.3%	\$91,866,098	\$87,602,398	\$4,263,700	4.9%
17	12/26/2015		\$78,125,965	\$73,858,618	\$4,267,347	5.8%	\$22,586,417	\$20,006,357	\$2,580,061	12.9%	\$100,712,382	\$93,864,975	\$6,847,408	7.3%
18	1/2/2016		\$76,712,975	\$67,733,268	\$8,979,707	13.3%	\$27,972,880	\$21,355,167	\$6,617,714	31.0%	\$104,685,855	\$89,088,435	\$15,597,421	17.5%
19	1/9/2016		\$77,136,541	\$64,745,641	\$12,390,900	19.1%	\$127,289,478	\$22,265,347	\$105,024,131	471.7%	\$204,426,019	\$87,010,988	\$117,415,031	134.9%
20	1/16/2016		\$73,858,865	\$64,015,166	\$9,843,699	15.4%	\$140,104,126	\$23,694,617	\$116,409,509	491.3%	\$213,962,991	\$87,709,783	\$126,253,208	143.9%
21	1/23/2016		\$70,665,700	\$62,569,156	\$8,096,544	12.9%	\$20,781,745	\$19,765,442	\$1,016,303	5.1%	\$91,447,445	\$82,334,598	\$9,112,847	11.1%
22	1/30/2016		\$71,051,685	\$68,001,588	\$3,050,097	4.5%	\$20,433,401	\$22,877,000	(\$2,443,600)	-10.7%	\$91,485,086	\$90,878,588	\$606,498	0.7%
23	2/6/2016		\$78,458,428	\$75,677,650	\$2,780,778	3.7%	\$21,274,800	\$31,662,209	(\$10,387,409)	-32.8%	\$99,733,228	\$107,339,859	(\$7,606,631)	-7.1%
24	2/13/2016		\$80,754,850	\$75,368,712	\$5,386,138	7.1%	\$21,391,919	\$46,091,747	(\$24,699,828)	-53.6%	\$102,146,769	\$121,460,459	(\$19,313,690)	-15.9%
25	2/20/2016		\$80,078,271	\$74,833,076	\$5,245,195	7.0%	\$21,911,382	\$19,865,172	\$2,046,211	10.3%	\$101,989,653	\$94,698,248	\$7,291,406	7.7%
26	2/27/2016		\$78,832,217	\$69,918,013	\$8,914,204	12.7%	\$22,823,086	\$19,735,352	\$3,087,734	15.6%	\$101,655,303	\$89,653,365	\$12,001,938	13.4%
27	3/5/2016		\$80,019,524	\$74,848,961	\$5,170,563	6.9%	\$23,146,906	\$19,946,068	\$3,200,838	16.0%	\$103,166,430	\$94,795,029	\$8,371,401	8.8%
28	3/12/2016		\$78,524,214	\$70,079,409	\$8,444,805	12.1%	\$19,311,625	\$20,044,562	(\$732,937)	-3.7%	\$97,835,839	\$90,123,971	\$7,711,868	8.6%
29	3/19/2016			\$70,368,686				\$18,480,795				\$88,849,481		
30	3/26/2016			\$70,280,600				\$17,595,205				\$87,875,805		
31	4/2/2016			\$74,369,952				\$18,378,917				\$92,748,869		
32	4/9/2016			\$67,416,817				\$18,594,844				\$86,011,661		
33	4/16/2016			\$68,393,316				\$18,104,632				\$86,497,948		
34	4/23/2016			\$70,078,182				\$17,957,150				\$88,035,332		
35	4/30/2016			\$71,744,718				\$18,961,113				\$90,705,831		
36	5/7/2016			\$73,415,978				\$20,210,341				\$93,626,319		
37	5/14/2016			\$72,152,109				\$20,362,774				\$92,514,883		
38	5/21/2016			\$70,399,950				\$21,246,276				\$91,646,226		
39	5/28/2016			\$68,547,554				\$22,227,946				\$90,775,500		
40	6/4/2016			\$71,254,006				\$20,739,703				\$91,993,709		
41	6/11/2016			\$65,878,375				\$17,216,403				\$83,094,778		
42	6/18/2016			\$66,658,742				\$17,340,531				\$83,999,273		

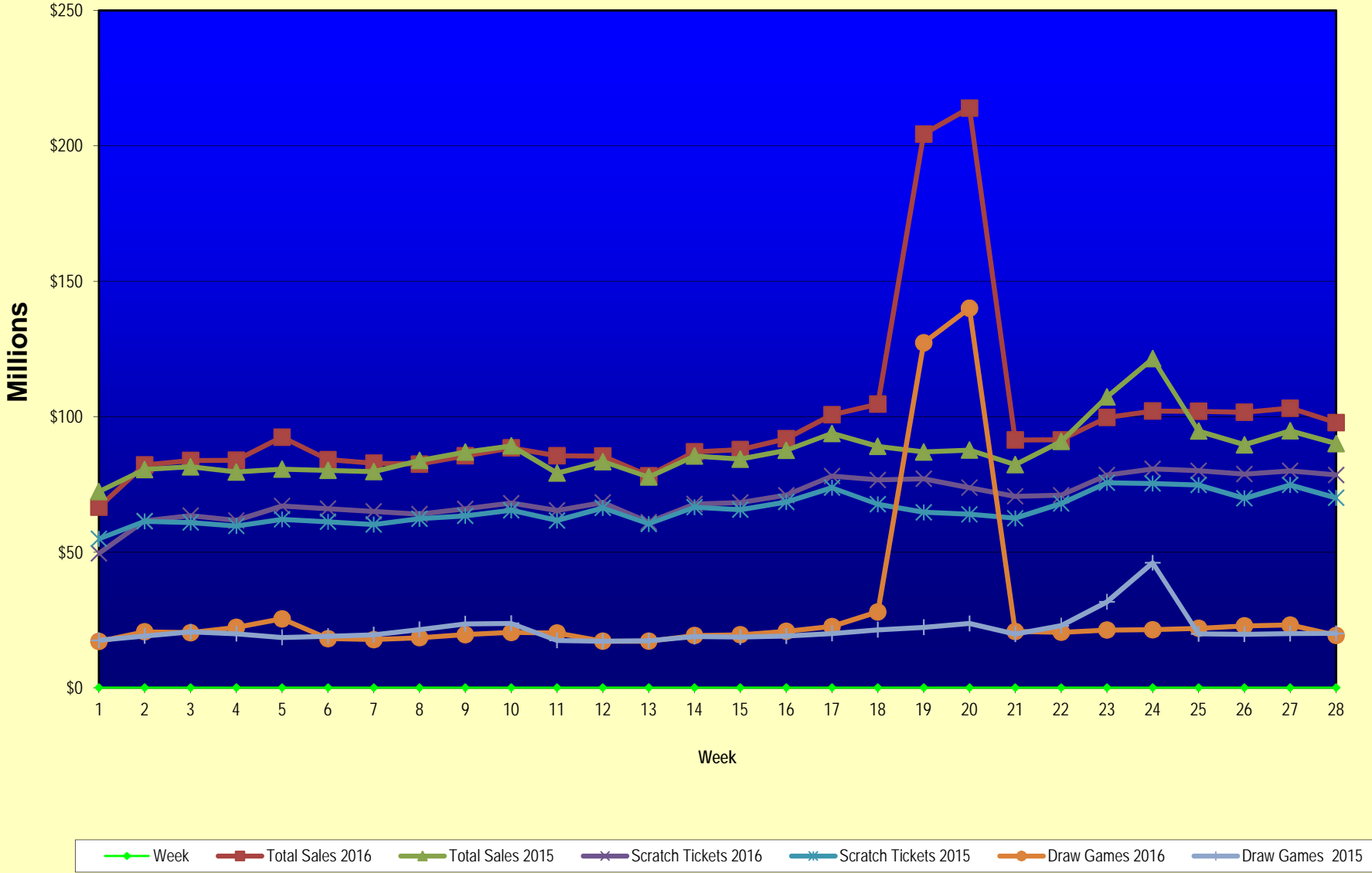
Texas Lottery Commission
Fiscal Year Over Year Change in Sales
Unaudited
FY 2016 Compared to FY 2015

			SCRATCH TICKETS				DRAW GAMES				TOTAL SALES			
FY 2016														
Week	Week	Ending	FY 2016	FY 2015	Difference	% change - Cumulative Sales	FY 2016	FY 2015	Difference	% change - Cumulative Sales	FY 2016	FY 2015	Difference	% change - Cumulative Sales
43	6/25/2016			\$65,282,276				\$16,873,368				\$82,155,644		
44	7/2/2016			\$67,757,752				\$18,007,540				\$85,765,292		
45	7/9/2016			\$64,718,254				\$18,203,985				\$82,922,239		
46	7/16/2016			\$64,957,977				\$18,792,785				\$83,750,762		
47	7/23/2016			\$62,541,241				\$18,229,965				\$80,771,206		
48	7/30/2016			\$66,468,460				\$17,742,489				\$84,210,949		
49	8/6/2016			\$62,412,598				\$17,331,374				\$79,743,972		
50	8/13/2016			\$62,089,389				\$17,501,599				\$79,590,988		
51	8/20/2016			\$62,437,148				\$17,779,458				\$80,216,606		
52	8/27/2016			\$61,403,206				\$18,529,560				\$79,932,766		
	8/31/2016 **			\$17,309,621				\$3,279,958				\$20,589,579		
Total thru Current Week			\$1,959,105,563	\$1,843,024,905	\$116,080,658	6.3%	\$803,218,742	\$598,649,910	\$204,568,833	34.2%	\$2,762,324,305	\$2,441,674,815	\$320,649,491	13.1%
Fiscal Year Total			\$1,959,105,563	\$3,481,361,812			\$803,218,742	\$1,048,338,613			\$2,762,324,305	\$4,529,700,425		

* FY 16 includes 5 days; FY 15 includes 6 days

** FY 16 includes 4 days; FY 15 includes 2 days

Texas Lottery Commission Fiscal Year Over Year Change in Sales



Note: Week 1 is not a full week of sales as this report is prepared on a Fiscal Year basis.

Texas Lottery Commission
Scratch Tickets by Price Point
Sales, Prize Expense, Sales Contribution and Payout Percentage With Year Over Year Changes
Unaudited

Fiscal Year	Price Point	# of Active Games	FY Sales	% of Scratch Ticket Sales	Year over Year Change in Sales	FY Prize Expense	Year over Year Change in Prize Expense	FY Sales Contribution	Year over Year Change in Contribution	Average Prize Payout %	Year over Year Change in Payout %
2015	\$1.00	21	94,802,352	5.1%		57,661,679		37,140,673		60.8%	1.5%
Through	\$2.00	30	192,559,076	10.4%		126,607,542		65,951,534		65.7%	1.4%
3/14/2015	\$3.00	13	188,917,917	10.3%		124,553,999		64,363,918		65.9%	0.5%
	\$5.00	42	582,892,620	31.6%		395,987,403		186,905,217		67.9%	0.0%
	\$10.00	15	366,932,170	19.9%		258,308,170		108,624,000		70.4%	0.1%
	\$20.00	9	331,899,020	18.0%		248,788,296		83,110,724		75.0%	0.1%
	\$50.00	3	85,021,750	4.6%		66,081,140		18,940,610		77.7%	0.1%
Total		133	\$1,843,024,905			\$1,277,988,227		\$565,036,678		69.3%	0.6%
2016	\$1.00	17	90,063,323	4.6%		54,295,664		35,767,659		60.3%	-0.4%
thru	\$2.00	29	201,688,080	10.3%		131,275,411		70,412,669		65.1%	-0.6%
3/12/2016	\$3.00	12	150,366,990	7.7%		99,015,567		51,351,423		65.8%	-0.1%
	\$5.00	48	653,684,740	33.4%		444,121,468		209,563,272		67.9%	0.0%
	\$10.00	17	370,443,140	18.9%		259,748,663		110,694,477		70.1%	-0.2%
	\$20.00	11	400,379,640	20.4%		300,080,809		100,298,831		74.9%	0.0%
	\$50.00	3	92,479,650	4.7%		71,926,190		20,553,460		77.8%	0.0%
Total		137	\$1,959,105,563			\$1,360,463,772		\$598,641,791		69.4%	0.0%
Variance	\$1.00	-4	-4,739,029		-5.0%	-3,366,015	-5.8%	-1,373,014	-3.7%	-0.54%	
2016 to	\$2.00	-1	9,129,004		4.7%	4,667,870	3.7%	4,461,134	6.8%	-0.66%	
2015	\$3.00	-1	-38,550,927		-20.4%	-25,538,432	-20.5%	-13,012,495	-20.2%	-0.08%	
	\$5.00	6	70,792,120		12.1%	48,134,065	12.2%	22,658,055	12.1%	0.01%	
	\$10.00	2	3,510,970		1.0%	1,440,493	0.6%	2,070,477	1.9%	-0.28%	
	\$20.00	2	68,480,620		20.6%	51,292,514	20.6%	17,188,106	20.7%	-0.01%	
	\$50.00	0	7,457,900		8.8%	5,845,050	8.8%	1,612,850	8.5%	0.05%	
Total		4	\$116,080,658		6.3%	\$82,475,545	6.5%	\$33,605,113	5.9%	0.10%	

Notes - Scratch Ticket Variances

Texas Lottery Commission
Scratch Tickets by Price Point
Sales, Prize Expense, Sales Contribution and Payout Percentage With Year Over Year Changes
Unaudited

			FY 2016		FY 2015	Difference
Sales	\$1 - \$5		\$1,095,803,133		\$1,059,171,965	\$36,631,168
Prize Exp.	\$1 - \$5		\$728,708,110		\$704,810,622	\$23,897,488
Sales Cont.	\$1 - \$5		\$367,095,023		\$354,361,343	\$12,733,680
Prize Exp. %	\$1 - \$5		66.5%		66.5%	0.0%
			FY 2016		FY 2015	Difference
Sales	\$10 - \$50		\$863,302,430		\$783,852,940	\$79,449,490
Prize Exp.	\$10 - \$50		\$631,755,662		\$573,177,605	\$58,578,057
Sales Cont.	\$10 - \$50		\$231,546,768		\$210,675,335	\$20,871,433
Prize Exp. %	\$10 - \$50		73.2%		73.1%	0.1%
			FY 2016		FY 2015	Difference
Sales	Scratch		\$1,959,105,563		\$1,843,024,905	\$116,080,658
Prize Exp.	Scratch		\$1,360,463,772		\$1,277,988,227	\$82,475,545
Sales Cont.	Scratch		\$598,641,791		\$565,036,678	\$33,605,113
Prize Exp. %	Scratch		69.4%		69.3%	0.1%

			FY 2016		FY 2015	Difference
Sales	\$1 - \$10		\$1,466,246,273		\$1,426,104,135	\$40,142,138
Prize Exp.	\$1 - \$10		\$988,456,773		\$963,118,792	\$25,337,981
Sales Cont.	\$1 - \$10		\$477,789,500		\$462,985,343	\$14,804,157
Prize Exp. %	\$1 - \$10		67.4%		67.5%	-0.1%
			FY 2016		FY 2015	Difference
Sales	\$20 - \$50		\$492,859,290		\$416,920,770	\$75,938,520
Prize Exp.	\$20 - \$50		\$372,007,000		\$314,869,435	\$57,137,564
Sales Cont.	\$20 - \$50		\$120,852,290		\$102,051,335	\$18,800,956
Prize Exp. %	\$20 - \$50		75.5%		75.5%	0.0%
			FY 2016		FY 2015	Difference
Sales	Scratch		\$1,959,105,563		\$1,843,024,905	\$116,080,658
Prize Exp.	Scratch		\$1,360,463,772		\$1,277,988,227	\$82,475,545
Sales Cont.	Scratch		\$598,641,791		\$565,036,678	\$33,605,113
Prize Exp. %	Scratch		69.4%		69.3%	0.1%

Texas Lottery Commission
Weekly Sales Summary
& Comparison to Previous Week
 Unaudited

	Week Ending 3/12/2016	% of Sales	Week Ending 3/05/2016	% of Sales	\$ change	% change
	<u>THIS WEEK</u>		<u>LAST WEEK</u>			
Total Sales	<u>\$97,835,839</u>		<u>\$103,166,430</u>		<u>-\$5,330,592</u>	-5.17%
Scratch Tickets	<u>\$78,524,214</u>	80.3%	<u>\$80,019,524</u>	77.6%	<u>-\$1,495,310</u>	-1.87%
Lotto	\$2,170,297	2.2%	\$2,269,811	2.2%	-\$99,514	-4.38%
Lotto Extra	\$403,101	0.4%	\$419,311	0.4%	-\$16,210	-3.87%
Pick 3	\$5,053,423	5.2%	\$5,370,371	5.2%	-\$316,948	-5.90%
Pick 3 Sum It Up	\$109,902	0.1%	\$115,581	0.1%	-\$5,679	-4.91%
Cash Five	\$910,388	0.9%	\$944,505	0.9%	-\$34,117	-3.61%
Texas Two Step	\$1,366,495	1.4%	\$1,944,339	1.9%	-\$577,844	-29.72%
Mega Millions	\$2,226,025	2.3%	\$2,720,417	2.6%	-\$494,392	-18.17%
Megaplier	\$593,134	0.6%	\$706,160	0.7%	-\$113,026	-16.01%
Daily 4	\$1,852,906	1.9%	\$1,962,847	1.9%	-\$109,941	-5.60%
Daily 4 Sum It Up	\$98,700	0.1%	\$105,379	0.1%	-\$6,679	-6.34%
Powerball	\$3,014,836	3.1%	\$4,803,055	4.7%	-\$1,788,219	-37.23%
Power Play	\$463,740	0.5%	\$675,939	0.7%	-\$212,199	-31.39%
All or Nothing	\$613,990	0.6%	\$647,306	0.6%	-\$33,316	-5.15%
Texas Triple Chance	\$434,688	0.4%	\$461,886	0.4%	-\$27,198	-5.89%
Total Draw Game Sales	<u>\$19,311,625</u>		<u>\$23,146,906</u>		<u>-\$3,835,282</u>	-16.57%

* Totals may not sum due to rounding.

Texas Lottery Commission
Weekly Sales Summary
Unaudited

SCRATCH TICKETS
TOP TEN SELLING GAMES

For the week ending: 3/12/2016

Rank	Price Point	Game	Sales (Millions)
1	\$ 10	THE BIG MONEY SUPER TICKET	\$ 7.743
2	\$ 20	HIT \$1,000,000	\$ 5.212
3	\$ 10	HIT \$500,000	\$ 4.596
4	\$ 5	HIT \$200,000	\$ 3.268
5	\$ 20	\$500,000 MONEY MANIA	\$ 3.230
6	\$ 50	DIAMOND DOLLARS	\$ 2.642
7	\$ 5	\$100,000 CASHWORD-O-RAMA	\$ 2.583
8	\$ 5	\$200,000 DOUBLE PAYDAY	\$ 2.460
9	\$ 3	TEXAS LOTERIA	\$ 2.212
10	\$ 3	BONUS CASHWORD	\$ 2.016

Texas Lottery Commission
Prize Payout Tracking Report
Unaudited

Through the week ending: 3/12/2016

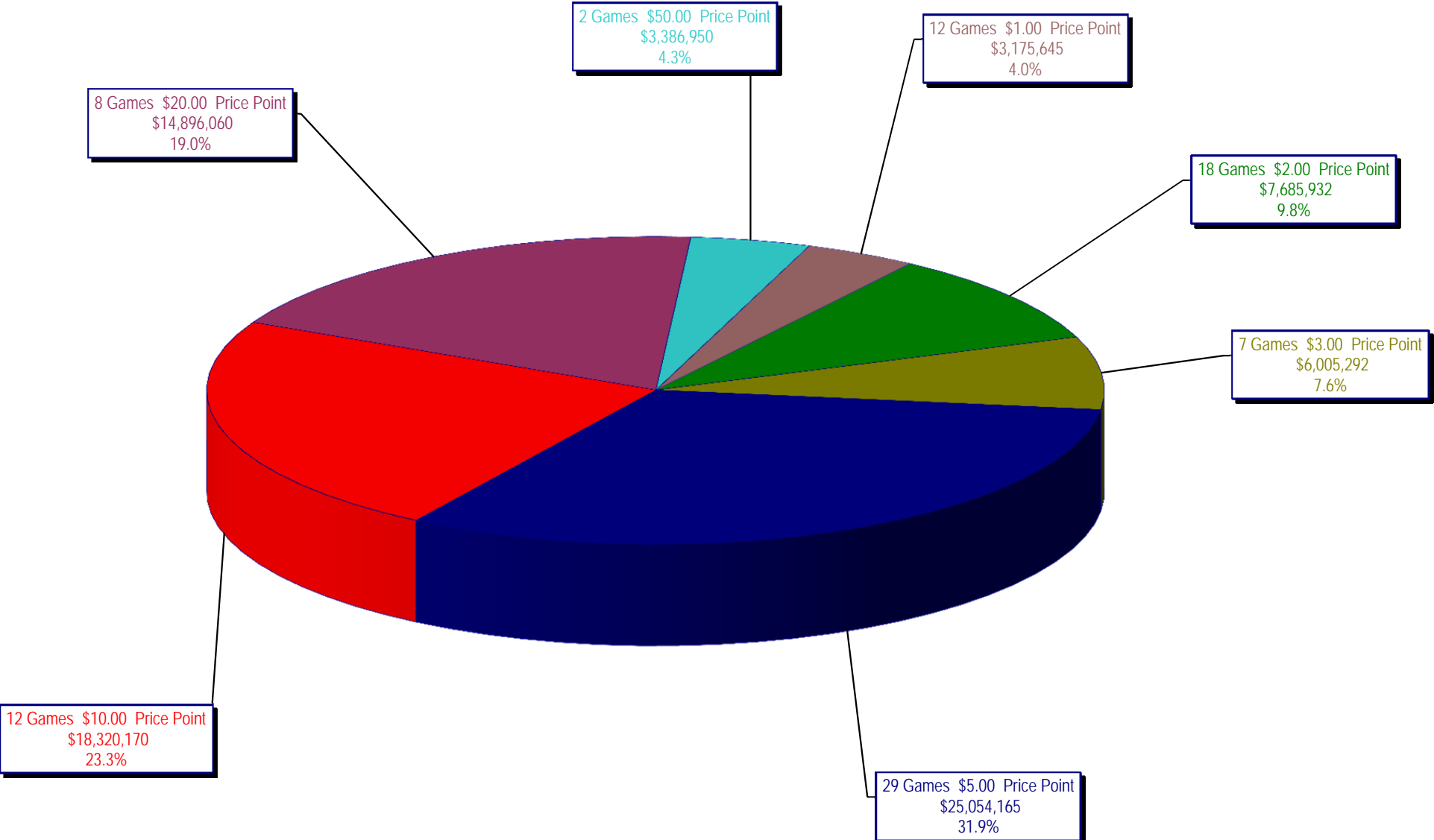
Draw Game Sales

		FY Sales Through Week Ending 3/12/2016		FY Prize Expense Through Week Ending 3/12/2016	Actual* Prize Payout	Base Payout (Prize Pool)
Lotto	\$	68,822,605	\$	40,361,486	58.65%	50.00%
Lotto Extra		11,824,573		6,140,288	51.93%	53.70%
Pick 3		136,205,540		67,658,680	49.67%	50.00%
Pick 3 Sum It Up		2,782,340		1,329,456	47.78%	50.00%
Cash Five		25,091,248		12,545,624	50.00%	50.00%
Texas Two Step		28,868,082		14,638,994	50.71%	50.00%
Mega Millions		69,594,779		35,675,087	51.26%	50.00%**
Megaplier		17,482,098		8,782,012	50.23%	N/A
Daily 4		47,924,536		24,829,825	51.81%	50.00%
Daily 4 Sum It Up		2,519,943		951,962	37.78%	50.00%
Powerball		325,619,339		163,017,674	50.06%	50.00%**
Power Play		35,199,838		17,627,131	50.08%	N/A
All or Nothing		16,891,924		8,882,376	52.58%	55.98%
Monopoly		0		(22,993)	0.00%	50.00%
Texas Triple Chance		14,391,898		8,877,453	61.68%	54.42%
Totals	\$	803,218,742	\$	411,295,054	51.21%	

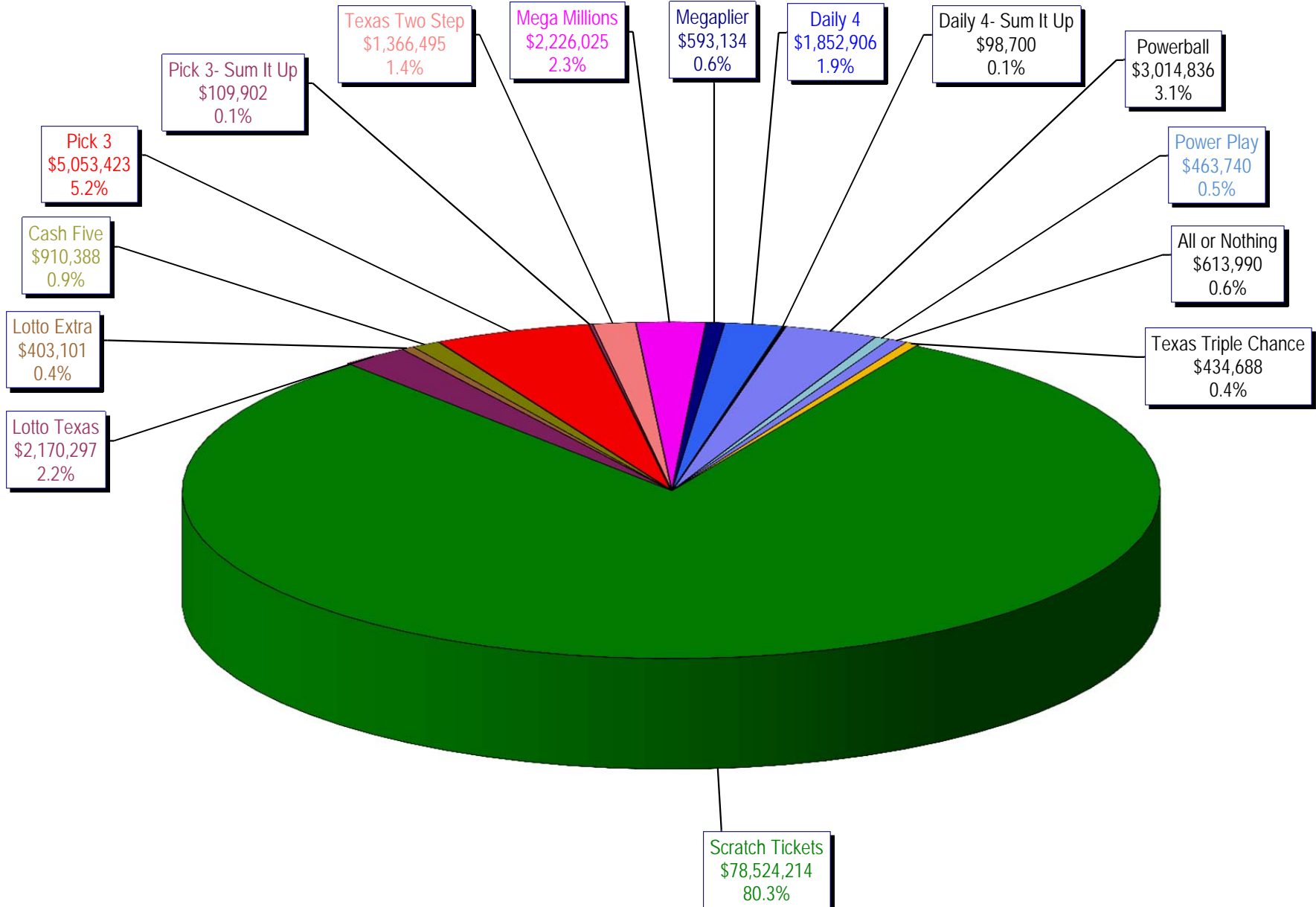
* Before Unclaimed Prizes

** Estimated; depends on # of guaranteed prizes won in Texas

Texas Lottery Commission
Scratch Ticket Sales
For the week ending 3/12/16
(Unaudited)



Texas Lottery Commission
All Game Sales
For the week ending 3/12/16
(Unaudited)



Texas Lottery Commission - Weekly Sales Summary for FY 2016 (Unaudited)

Week Ended	Scratch Tickets	New Games & Dates	Lotto Texas	Jackpot		Lotto Extra	Pick 3	Pick 3 Sum It Up	Cash Five	Texas Two Step	Jackpot		Mega Millions	Jackpot		Megaplier	Daily 4	Daily 4 Sum It Up	Powerball	Jackpot		Power Play	All or Nothing	Texas Triple Chance	Total	Per Cap.
				W	S						M	TH		T	F					W	S					
9/5/2015*	66,843,870	0	2,788,509	25	26	466,121	5,249,348	117,979	956,126	1,253,100	425	575	2,366,640	74	85	608,901	1,725,027	93,067	3,586,482	120	133	484,769	675,614		87,215,551	3.24
9/12/2015	61,566,291	1717 (\$1.N); 1718 (\$5.N); 1748 (\$10.N); 1696 (\$3.N) - 9/08/15	2,793,428	26.5	27.75	465,451	4,974,238	103,203	919,536	1,423,604	725	950	2,511,039	95	106	629,091	1,641,226	86,539	3,927,126	149	167	518,060	638,384		82,197,213	3.05
9/19/2015	63,530,657	0	2,845,557	28.25	29.5	475,307	4,715,566	95,242	928,275	854,109	200	225	1,817,155	15	20	487,946	1,647,829	81,483	5,082,782	185	208	639,614	656,388		83,857,910	3.11
9/26/2015	61,731,400	1720 (\$2.N); 1721 (\$5.N); 1715 (\$5.N) - 9/21/15	2,815,638	30	30.75	468,584	4,735,629	97,118	924,334	1,048,752	300	450	1,860,438	25	31	499,201	1,628,350	82,200	6,648,092	235	267	790,427	653,528		83,983,690	3.12
10/3/2015	67,048,415	0	3,034,763	31.5	32.25	502,043	4,925,789	100,522	919,217	1,347,552	600	725	2,053,673	39	47	539,290	1,662,320	88,291	8,036,576	301	40	884,785	616,594	725,376	92,485,206	3.43
10/10/2015	66,049,706	1722 (\$1.N); 1723 (\$5.N); 1711 (\$20.N) - 10/05/15	2,175,801	5	5.25	366,506	4,803,855	97,005	899,614	1,141,865	925	200	2,113,720	55	65	535,411	1,636,542	86,150	2,572,748	50	60	372,480	593,616	743,664	84,188,683	3.12
10/17/2015	65,073,593	0	2,133,286	5	5	358,076	4,629,752	92,453	876,040	824,622	200	225	2,286,703	75	84	568,477	1,576,323	79,576	2,638,956	70	80	377,157	580,870	754,124	82,850,007	3.07
10/24/2015	64,087,437	1724 (\$2.N); 1769 (\$5.N); 1726 (\$10.N) - 10/19/15	2,099,176	5.25	5.5	358,217	4,515,381	92,071	860,960	991,931	300	425	2,600,946	93	105	626,019	1,553,788	80,225	2,946,077	90	100	411,192	562,378	752,104	82,537,901	3.06
10/31/2015	66,025,374	0	2,165,101	5.75	6	368,559	4,653,961	91,360	873,751	944,275	550	200	2,945,749	117	129	695,705	1,621,009	85,560	3,327,954	110	127	455,266	573,258	766,642	85,593,524	3.18
11/7/2015	68,137,192	1727 (\$1.N); 1728 (\$2.N); 1729 (\$5.N) - 11/02/15	2,232,267	6.25	6.5	379,508	4,977,693	96,887	891,111	911,796	225	300	3,416,380	144	164	795,028	1,688,298	86,418	3,071,581	142	40	425,312	599,980	826,093	88,535,543	3.28
11/14/2015	65,449,428	0	2,185,621	6.75	7	373,102	4,726,211	93,030	870,215	1,087,101	425	575	4,139,462	180	200	938,757	1,614,727	82,536	2,437,413	50	60	357,760	574,596	688,852	85,618,810	3.18
11/21/2015	68,364,421	1730 (\$2.N); 1783 (\$2.N); 1731 (\$5.N) - 11/16/15 1778 (\$2.N) - 11/18/15	2,173,857	7.25	7.5	369,519	4,674,293	88,988	862,630	825,054	200	225	1,830,909	15	20	489,485	1,632,096	82,077	2,553,907	70	80	370,594	586,348	634,850	85,539,027	3.17
11/28/2015	61,091,628	0	2,113,171	7.75	8.25	364,947	4,523,108	87,438	825,047	904,825	300	400	1,785,419	25	31	478,828	1,591,416	82,363	2,886,666	90	100	406,251	546,614	572,902	78,260,621	2.90
12/5/2015	67,830,827	1733 (\$5.N) - 12/5/15	2,245,481	8.75	9.5	385,346	5,020,926	94,445	898,598	957,116	525	200	2,073,099	39	47	545,451	1,789,318	94,198	3,432,248	110	127	467,917	603,222	645,054	87,083,245	3.23
12/12/2015	68,324,452	1751 (\$1.N); 1780 (\$2.N); 1784 (\$5.N) - 12/07/15	2,281,004	10.25	10.75	391,281	4,980,397	94,549	877,611	815,777	225	200	2,160,601	57	66	555,974	1,746,314	86,684	3,835,044	145	164	508,111	592,212	603,850	87,853,860	3.26
12/19/2015	71,041,258	0	2,326,771	11.5	12.25	400,223	4,980,685	95,154	879,423	888,674	225	300	2,322,855	74	85	592,792	1,796,682	92,401	4,707,013	180	202	600,420	573,754	567,994	91,866,098	3.41
12/26/2015	78,125,965	1736 (\$5.N); 1740 (\$20.N) - 12/21/15 1789 (\$3.N) - 12/22/15	2,422,285	12.75	13.5	417,003	4,863,405	91,522	860,361	1,106,519	400	550	2,624,875	94	104	637,157	1,725,445	87,146	5,941,638	227	255	728,720	548,978	531,364	100,712,382	3.74
1/2/2016	76,712,975	0	2,598,993	14.25	15.25	446,634	4,857,347	95,570	883,605	857,640	200	225	3,175,442	117	130	756,602	1,731,866	91,457	10,213,886	300	334	1,168,791	559,472	535,576	104,685,855	3.88
1/9/2016	77,136,541	1738 (\$1.N); 1735 (\$2.N); 1737 (\$10.N) - 1/04/16	3,569,884	16	17	580,778	4,782,398	102,725	899,480	1,029,458	300	425	4,896,815	145	165	1,100,345	1,668,434	91,670	98,440,136	500	900	8,915,982	589,972	621,402	204,426,019	7.58
1/16/2016	73,858,865	0	3,543,250	18	19	585,402	4,666,496	105,064	901,254	834,973	200	225	2,581,249	15	22	661,350	1,658,823	94,886	112,171,706	1.5	40	11,071,288	613,248	615,138	213,962,991	7.94
1/23/2016	70,665,700	1747 (\$5.N); 1790 (\$5.N); 1786 (\$3.N) - 1/18/16	2,864,110	19.5	20.25	492,400	4,696,016	104,467	945,128	846,809	200	225	2,033,849	30	39	535,675	1,742,249	90,096	4,651,362	50	60	646,626	622,838	510,120	91,447,445	3.39
1/30/2016	71,051,685	0	2,291,772	5	5.25	405,017	4,976,880	103,912	948,507	850,282	200	225	2,106,150	48	56	559,777	1,825,583	100,694	4,470,995	75	96	639,118	647,428	507,286	91,485,086	3.39
2/6/2016	78,458,428	1700 (\$1.N); 1702 (\$5.N); 1745 (\$20.N) - 2/01/16	2,298,351	5.5	5.75	412,187	5,095,888	106,149	980,363	1,020,644	300	425	2,198,934	63	71	579,927	1,833,296	99,283	4,823,108	112	136	683,319	650,426	492,926	99,733,228	3.70
2/13/2016	80,754,850	0	2,240,742	6	6.25	405,702	5,332,774	111,268	938,662	848,340	200	225	2,236,840	80	87	592,165	1,918,261	104,613	4,856,599	157	176	684,114	643,040	478,800	102,146,769	3.79
2/20/2016	80,078,271	1677 (\$2.N); 1625 (\$5.N) - 2/15/16	2,219,682	6.5	6.75	405,997	5,261,755	112,333	922,062	1,042,317	300	425	2,348,026	94	104	612,581	1,903,450	105,785	5,158,458	189	212	714,054	637,966	466,916	101,989,653	3.78

Texas Lottery Commission - Weekly Sales Summary for FY 2016 (Unaudited)

Week Ended	Scratch Tickets	New Games & Dates	Lotto Texas	Jackpot		Lotto Extra	Pick 3	Pick 3 Sum It Up	Cash Five	Texas Two Step	Jackpot		Mega Millions	Jackpot		Megaplier	Daily 4	Daily 4 Sum It Up	Powerball	Jackpot		Power Play	All or Nothing	Texas Triple Chance	Total	Per Cap.	
				W	S						M	TH		T	F					W	S						
2/27/2016	78,832,217	0	2,219,240	7	7.25	408,736	5,046,436	106,701	906,814	1,388,361	575	750	2,482,721	114	125	639,604	1,848,625	96,548	5,807,303	236	266	793,600	624,106	454,291	101,655,303	3.77	
3/5/2016	80,019,524	1798 (\$3.N); 1796 (\$5.N) - 2/29/16	2,269,811	7.5	7.75	419,311	5,370,371	115,581	944,505	1,944,339	950	1,175	2,720,417	135	144	706,160	1,962,847	105,379	4,803,055	292	40	675,939	647,306	461,886	103,166,430	3.83	
3/12/2016	78,524,214	1746 (\$1.N); 1795 (\$2.N); 1744 (\$5.N); 1719 (\$10.N) - 3/7/16 1797 (\$10.N) - 3/9/16	2,170,297	8	8.75	403,101	5,053,423	109,902	910,388	1,366,495	1,450	200	2,226,025	157	15	593,134	1,852,906	98,700	3,014,836	50	60	463,740	613,990	434,688	97,835,839	3.63	
weekly change	-1.9%		-4.4%			-3.9%	-5.9%	-4.9%	-3.6%	-29.7%			-18.2%			-16.0%	-5.6%	-6.3%	-37.2%			-31.4%	-5.1%	-5.9%	-5.2%		
	SALES		SALES			SALES	SALES	SALES	SALES	SALES			SALES			SALES	SALES	SALES	SALES			SALES	SALES	SALES	SALES	% of Sales	
Calendar Year to date	791,545,775		26,801,547			4,707,943	51,864,054	1,108,507	9,566,371	11,251,932			26,942,539			6,849,017	18,760,795	1,017,986	253,058,204			25,837,808	6,461,208	5,209,567	1,240,983,252	100.0%	
Fiscal Year to date 2016	1,959,105,563		68,822,605			11,824,573	136,205,540	2,782,340	25,091,248	28,868,082			69,594,779			17,482,098	47,924,536	2,519,943	325,619,339			35,199,838	16,891,924	14,391,896	2,762,324,305	100.0%	
*Full week includes 2 days from FY15																											