



WEEKLY SALES SUMMARY

Unaudited

[Week Ending: 03/14/2009](#)

Texas Lottery Commission
Fiscal Year to Date Sales Comparison
Unaudited

Through the week ending 03/14/2009 (28 weeks)

Sales by Game	FY 2007 *	FY 2008 **	FY 2009	\$ Change		% Change	
				FY 2009 to FY 2007	FY 2009 to FY 2008	FY 2009 to FY 2007	FY 2009 to FY 2008
Instant	\$ 1,538,929,475	\$ 1,530,934,332	\$ 1,494,683,976	\$ -44,245,499	\$ -36,250,356	-2.9%	-2.4%
Lotto Texas	128,131,522	114,746,380	103,627,656	-24,503,866	-11,118,724	-19.1%	-9.7%
Pick 3	170,177,322	155,751,657	154,192,004	-15,985,318	-1,559,654	-9.4%	-1.0%
Pick 3 Sum It Up	-	3,302,924	3,257,954	3,257,954	-44,970	-	-1.4%
Cash 5	47,727,992	41,718,324	38,508,346	-9,219,646	-3,209,978	-19.3%	-7.7%
Texas Two Step	28,372,846	23,822,690	28,178,070	-194,776	4,355,380	-0.7%	18.3%
Mega Millions	104,619,200	92,179,923	100,997,527	-3,621,674	8,817,604	-3.5%	9.6%
Megaplier	23,361,487	21,808,303	23,284,960	-76,527	1,476,657	-0.3%	6.8%
Daily 4	-	22,857,690	23,780,477	23,780,477	922,787	-	4.0%
Daily 4 Sum It Up	-	5,414,727	2,962,671	2,962,671	-2,452,056	-	-45.3%
Total	\$ 2,041,319,844	\$ 2,012,536,949	\$ 1,973,473,639	\$ -67,846,205	\$ -39,063,311	-3.3%	-1.9%

* 3 extra days in 2007 ** 2 extra days in 2008

Texas Lottery Commission
Fiscal Year Over Year Change in Sales
Unaudited
FY 2009 Compared to FY 2008

Week	FY 2009 Week Ending	INSTANT TICKETS				ON-LINE GAMES				TOTAL SALES			
		FY 2009	FY 2008	Difference	% change - Cumulative Sales	FY 2009	FY 2008	Difference	% change - Cumulative Sales	FY 2009	FY 2008	Difference	% change - Cumulative Sales
1	9/6/2008**	\$44,890,104	\$62,376,229	(\$17,486,125)	-28.0%	\$14,722,011	\$19,372,224	(\$4,650,213)	-24.0%	\$59,612,115	\$81,748,453	(\$22,136,338)	-27.1%
2	9/13/2008	\$46,309,551	\$52,458,866	(\$6,149,315)	-20.6%	\$13,704,860	\$16,926,163	(\$3,221,303)	-21.7%	\$60,014,411	\$69,385,029	(\$9,370,618)	-20.8%
3	9/20/2008	\$42,923,171	\$49,998,934	(\$7,075,763)	-18.6%	\$12,291,263	\$15,792,283	(\$3,501,020)	-21.8%	\$55,214,434	\$65,791,217	(\$10,576,783)	-19.4%
4	9/27/2008	\$47,042,801	\$49,894,175	(\$2,851,374)	-15.6%	\$14,222,339	\$14,800,514	(\$578,175)	-17.9%	\$61,265,140	\$64,694,689	(\$3,429,549)	-16.2%
5	10/4/2008	\$50,747,162	\$53,486,863	(\$2,739,701)	-13.5%	\$15,784,472	\$16,618,430	(\$833,958)	-15.3%	\$66,531,634	\$70,105,293	(\$3,573,659)	-14.0%
6	10/11/2008	\$49,763,789	\$50,918,020	(\$1,154,231)	-11.7%	\$15,622,498	\$15,601,410	\$21,088	-12.9%	\$65,386,287	\$66,519,430	(\$1,133,143)	-12.0%
7	10/18/2008	\$49,299,053	\$50,532,253	(\$1,233,200)	-10.5%	\$15,167,940	\$15,682,666	(\$514,726)	-11.6%	\$64,466,993	\$66,214,919	(\$1,747,926)	-10.7%
8	10/25/2008	\$49,977,581	\$50,347,450	(\$369,869)	-9.3%	\$14,525,843	\$15,586,516	(\$1,060,673)	-11.0%	\$64,503,424	\$65,933,966	(\$1,430,542)	-9.7%
9	11/1/2008	\$50,346,542	\$53,953,733	(\$3,607,191)	-9.0%	\$14,838,845	\$16,775,983	(\$1,937,139)	-11.1%	\$65,185,387	\$70,729,716	(\$5,544,330)	-9.5%
10	11/8/2008	\$54,860,087	\$53,635,090	\$1,224,997	-7.9%	\$16,057,069	\$15,912,791	\$144,278	-9.9%	\$70,917,156	\$69,547,881	\$1,369,275	-8.3%
11	11/15/2008	\$53,484,812	\$51,254,401	\$2,230,411	-6.8%	\$15,829,819	\$15,797,076	\$32,744	-9.0%	\$69,314,631	\$67,051,477	\$2,263,155	-7.3%
12	11/22/2008	\$52,806,511	\$50,897,817	\$1,908,694	-5.9%	\$16,460,748	\$15,801,720	\$659,028	-7.9%	\$69,267,259	\$66,699,537	\$2,567,722	-6.4%
13	11/29/2008	\$52,199,741	\$53,913,115	(\$1,713,374)	-5.7%	\$17,397,576	\$17,055,505	\$342,072	-7.1%	\$69,597,317	\$70,968,620	(\$1,371,303)	-6.0%
14	12/6/2008	\$56,731,851	\$55,702,697	\$1,029,154	-5.1%	\$20,363,789	\$17,900,717	\$2,463,073	-5.5%	\$77,095,640	\$73,603,414	\$3,492,227	-5.2%
15	12/13/2008	\$54,109,617	\$53,703,516	\$406,101	-4.7%	\$22,952,228	\$17,820,841	\$5,131,387	-3.0%	\$77,061,845	\$71,524,357	\$5,537,488	-4.3%
16	12/20/2008	\$55,777,328	\$57,592,769	(\$1,815,441)	-4.6%	\$15,833,517	\$17,436,233	(\$1,602,716)	-3.4%	\$71,610,845	\$75,029,002	(\$3,418,157)	-4.3%
17	12/27/2008	\$57,597,885	\$57,696,003	(\$98,118)	-4.3%	\$15,851,771	\$14,743,680	\$1,108,091	-2.9%	\$73,449,656	\$72,439,683	\$1,009,973	-4.0%
18	1/3/2009	\$57,582,115	\$57,935,952	(\$353,837)	-4.1%	\$16,900,028	\$15,704,450	\$1,195,578	-2.3%	\$74,482,143	\$73,640,402	\$841,741	-3.7%
19	1/10/2009	\$54,250,945	\$55,360,542	(\$1,109,597)	-4.0%	\$16,203,220	\$15,691,540	\$511,680	-2.0%	\$70,454,165	\$71,052,082	(\$597,917)	-3.5%
20	1/17/2009	\$51,625,339	\$54,920,166	(\$3,294,827)	-4.1%	\$15,701,605	\$16,259,669	(\$558,064)	-2.1%	\$67,326,944	\$71,179,835	(\$3,852,891)	-3.6%
21	1/24/2009	\$52,789,573	\$54,439,890	(\$1,650,317)	-4.1%	\$15,897,473	\$16,691,724	(\$794,251)	-2.2%	\$68,687,046	\$71,131,614	(\$2,444,568)	-3.6%
22	1/31/2009	\$55,453,471	\$57,464,382	(\$2,010,911)	-4.0%	\$16,908,272	\$17,968,227	(\$1,059,955)	-2.4%	\$72,361,743	\$75,432,609	(\$3,070,866)	-3.7%
23	2/7/2009	\$62,247,711	\$60,715,019	\$1,532,692	-3.7%	\$18,354,314	\$20,097,338	(\$1,743,025)	-2.7%	\$80,602,025	\$80,812,357	(\$210,333)	-3.5%
24	2/14/2009	\$60,509,056	\$57,093,143	\$3,415,913	-3.3%	\$19,218,078	\$22,179,908	(\$2,961,831)	-3.3%	\$79,727,134	\$79,273,051	\$454,083	-3.3%
25	2/21/2009	\$59,194,623	\$57,627,047	\$1,567,576	-3.0%	\$21,098,199	\$27,230,539	(\$6,132,340)	-4.5%	\$80,292,822	\$84,857,586	(\$4,564,764)	-3.4%
26	2/28/2009	\$58,857,216	\$55,591,667	\$3,265,549	-2.7%	\$24,116,924	\$17,016,118	\$7,100,806	-2.8%	\$82,974,140	\$72,607,785	\$10,366,355	-2.7%
27	3/7/2009	\$59,552,257	\$56,837,481	\$2,714,776	-2.4%	\$23,995,136	\$16,690,193	\$7,304,943	-1.1%	\$83,547,393	\$73,527,674	\$10,019,719	-2.1%
28	3/14/2009	\$53,754,084	\$54,587,112	(\$833,028)	-2.4%	\$18,769,831	\$16,448,165	\$2,321,667	-0.6%	\$72,523,915	\$71,035,277	\$1,488,639	-1.9%
29	3/21/2009		\$53,098,937				\$16,639,184				\$69,738,121		
30	3/28/2009		\$53,933,689				\$17,698,625				\$71,632,314		
31	4/4/2009		\$57,598,982				\$17,665,411				\$75,264,393		
32	4/11/2009		\$53,954,185				\$15,860,784				\$69,814,969		
33	4/18/2009		\$53,946,736				\$16,452,676				\$70,399,412		
34	4/25/2009		\$51,533,006				\$16,873,949				\$68,406,955		
35	5/2/2009		\$53,250,568				\$18,202,103				\$71,452,671		
36	5/9/2009		\$54,060,849				\$18,422,562				\$72,483,411		
37	5/16/2009		\$54,010,641				\$20,728,360				\$74,739,001		
38	5/23/2009		\$50,377,032				\$15,461,384				\$65,838,416		
39	5/30/2009		\$49,545,080				\$15,175,370				\$64,720,450		
40	6/6/2009		\$53,702,986				\$15,982,166				\$69,685,152		

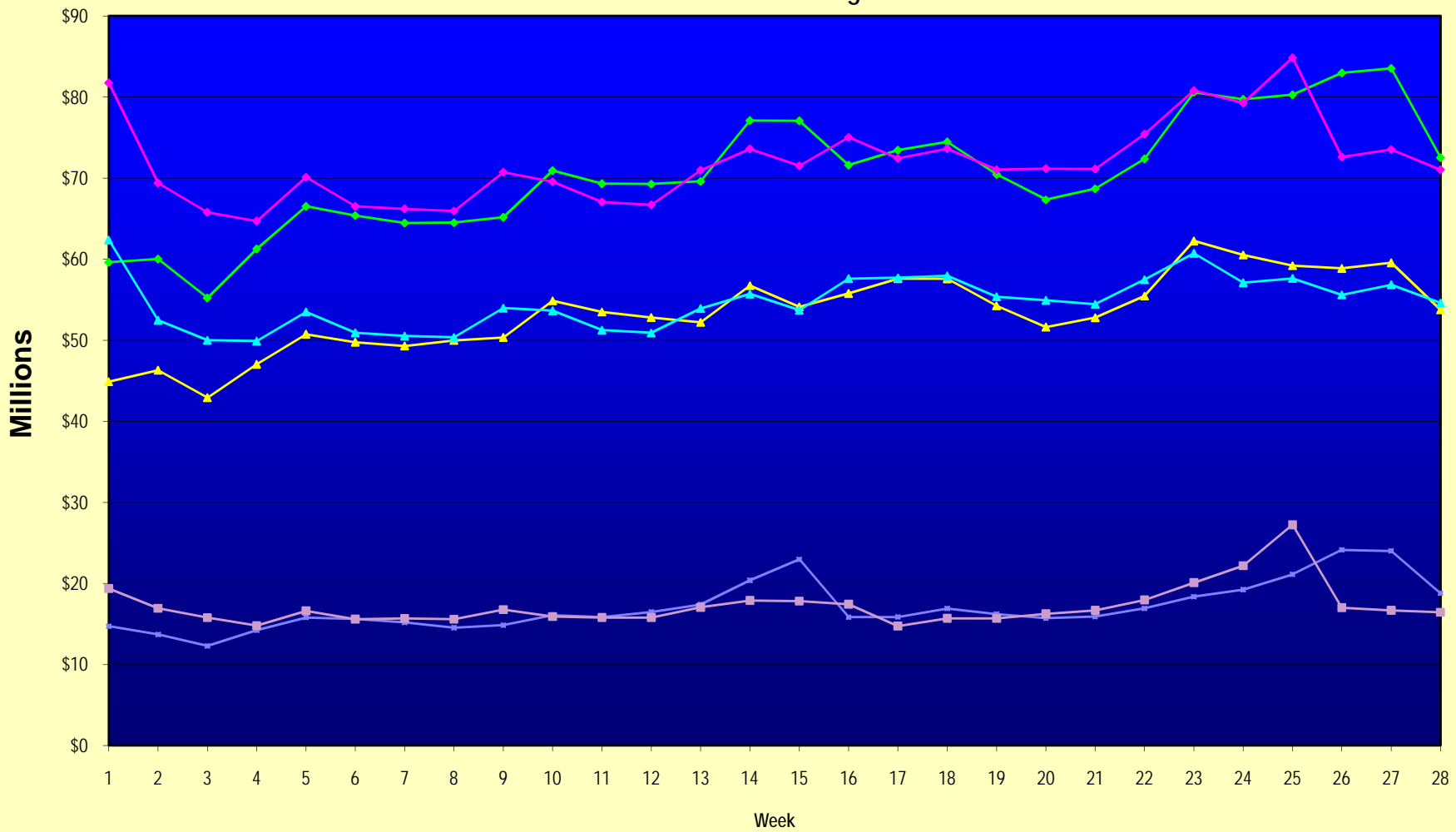
Note: Week 1 is not a full week of sales as this report is prepared on a Fiscal Year basis.

Texas Lottery Commission
Fiscal Year Over Year Change in Sales
Unaudited
FY 2009 Compared to FY 2008

Week	FY 2009 Week Ending	INSTANT TICKETS				ON-LINE GAMES				TOTAL SALES			
		FY 2009	FY 2008	Difference	% change - Cumulative Sales	FY 2009	FY 2008	Difference	% change - Cumulative Sales	FY 2009	FY 2008	Difference	% change - Cumulative Sales
41	6/13/2009		\$51,171,483				\$16,589,087				\$67,760,570		
42	6/20/2009		\$50,650,362				\$15,728,484				\$66,378,846		
43	6/27/2009		\$49,258,266				\$15,250,905				\$64,509,171		
44	7/4/2009		\$53,393,355				\$16,270,619				\$69,663,974		
45	7/11/2009		\$53,127,756				\$16,914,922				\$70,042,678		
46	7/18/2009		\$51,593,146				\$17,752,738				\$69,345,884		
47	7/25/2009		\$49,902,181				\$16,706,145				\$66,608,326		
48	8/1/2009		\$49,605,420				\$16,254,383				\$65,859,803		
49	8/8/2009		\$50,961,907				\$16,770,496				\$67,732,403		
50	8/15/2009		\$49,452,511				\$16,749,487				\$66,201,998		
51	8/22/2009		\$49,249,518				\$17,286,302				\$66,535,820		
52	8/29/2009		\$49,468,928				\$18,109,997				\$67,578,925		
53	9/5/2009		\$6,054,239				\$493,109				\$6,547,348		
Total thru Current Week		\$1,494,683,976	\$1,530,934,332	(\$36,250,356)	-2.4%	\$478,789,663	\$481,602,617	(\$2,812,955)	-0.6%	\$1,973,473,639	\$2,012,536,949	(\$39,063,311)	-1.9%
Fiscal Year Total		\$1,494,683,976	\$2,783,836,095			\$478,789,663	\$887,641,858			\$1,973,473,639	\$3,671,477,953		

** FY 2009 includes 6 days; FY 2008 includes 8 days
FY 2009 average daily sales are \$9,242,258. Two days at average daily sales are \$18,484,516.

Texas Lottery Commission Fiscal Year Over Year Change in Sales



◆ Total Sales 2009
 ◆ Total Sales 2008
 ▲ Instant Tickets 2009
 ▲ Instant Tickets 2008
 ■ On-Line Games 2009
 ■ On-Line Games 2008

Note: Week 1 is not a full week of sales as this report is prepared on a Fiscal Year basis.

Texas Lottery Commission
Instant Tickets by Price Point
Sales, Prize Expense, Sales Contribution and Payout Percentage With Year Over Year Changes
Unaudited

Fiscal Year	Price Point	# of Active Games	FY Sales	% of Instant Ticket Sales	Year over Year Change in Sales	FY Prize Expense	Year over Year Change in Prize Expense	FY Sales Contribution	Year over Year Change in Contribution	Average Prize Payout %	Year over Year Change in Payout %
2008	\$1.00	41	129,324,691	8.4%		\$77,700,873		\$51,623,818		60.1%	0.0%
thru	\$2.00	45	250,758,258	16.4%		\$163,357,567		\$87,400,691		65.1%	0.5%
3/15/2008	\$3.00	15	127,231,332	8.3%		\$83,669,305		\$43,562,027		65.8%	-0.1%
	\$5.00	40	428,478,410	28.0%		\$290,260,059		\$138,218,351		67.7%	-0.4%
	\$7.00	11	97,400,870	6.4%		\$66,239,160		\$31,161,710		68.0%	0.1%
	\$10.00	18	231,482,726	15.1%		\$160,989,561		\$70,493,166		69.5%	-1.3%
	\$20.00	7	94,685,280	6.2%		\$68,093,560		\$26,591,720		71.9%	-0.1%
	\$25.00	2	45,029,775	2.9%		\$32,694,444		\$12,335,331		72.6%	0.3%
	\$30.00	3	34,869,540	2.3%		\$25,238,512		\$9,631,028		72.4%	0.1%
	\$50.00	2	91,673,450	6.0%		\$66,135,897		\$25,537,553		72.1%	0.0%
Total		184	\$1,530,934,332			\$1,034,378,936		\$496,555,396		67.6%	0.1%
2009	\$1.00	40	131,726,327	8.8%		79,218,648		52,507,679		60.1%	0.1%
thru	\$2.00	35	259,032,385	17.3%		168,777,488		90,254,897		65.2%	-0.2%
3/14/2009	\$3.00	15	156,229,875	10.5%		102,690,415		53,539,460		65.7%	0.0%
	\$5.00	39	459,942,239	30.8%		312,805,894		147,136,345		68.0%	0.1%
	\$7.00	7	73,491,775	4.9%		49,979,283		23,512,492		68.0%	0.0%
	\$10.00	16	207,476,360	13.9%		145,177,856		62,298,504		70.0%	0.0%
	\$20.00	8	137,160,820	9.2%		98,422,715		38,738,105		71.8%	0.0%
	\$25.00	1	2,373,025	0.2%		1,726,035		646,990		72.7%	0.2%
	\$30.00	3	10,027,320	0.7%		7,266,166		2,761,154		72.5%	0.1%
	\$50.00	3	57,223,850	3.8%		41,361,796		15,862,054		72.3%	0.2%
Total		167	\$1,494,683,976			\$1,007,426,297		\$487,257,679		67.4%	-0.4%
Variance	\$1.00	-1	2,401,636		1.9%	1,517,776	2.0%	883,860	1.7%	0.06%	
2009 to	\$2.00	-10	8,274,127		3.3%	5,419,921	3.3%	2,854,206	3.3%	0.01%	
2008	\$3.00	0	28,998,543		22.8%	19,021,111	22.7%	9,977,432	22.9%	-0.03%	
	\$5.00	-1	31,463,829		7.3%	22,545,836	7.8%	8,917,993	6.5%	0.27%	
	\$7.00	-4	-23,909,095		-24.5%	-16,259,876	-24.5%	-7,649,219	-24.5%	0.00%	
	\$10.00	-2	-24,006,366		-10.4%	-15,811,704	-9.8%	-8,194,662	-11.6%	0.43%	
	\$20.00	1	42,475,540		44.9%	30,329,156	44.5%	12,146,384	45.7%	-0.16%	
	\$25.00	-1	-42,656,750		-94.7%	-30,968,409	-94.7%	-11,688,341	-94.8%	0.13%	
	\$30.00	0	-24,842,220		-71.2%	-17,972,347	-71.2%	-6,869,873	-71.3%	0.08%	
	\$50.00	1	-34,449,600		-37.6%	-24,774,102	-37.5%	-9,675,498	-37.9%	0.14%	
Total		-17	-\$36,250,356		-2.4%	-\$26,952,639	-2.6%	-\$9,297,717	-1.9%	-0.16%	

Texas Lottery Commission
Instant Tickets by Price Point
Sales, Prize Expense, Sales Contribution and Payout Percentage With Year Over Year Changes
Unaudited

Notes - Instant Ticket Variances

		FY 2009		FY 2008		Difference
Sales	\$1 - \$7		\$1,080,422,601		\$1,033,193,561	\$47,229,040
Prize Exp.	\$1 - \$7		\$713,471,729		\$681,226,963	\$32,244,767
Sales Cont.	\$1 - \$7		\$366,950,872		\$351,966,598	\$14,984,273
Prize Exp. %	\$1 - \$7		66.0%		65.9%	0.1%
		FY 2009		FY 2008		Difference
Sales	\$10 - \$50		\$414,261,375		\$497,740,771	-\$83,479,396
Prize Exp.	\$10 - \$50		\$293,954,568		\$353,151,974	-\$59,197,406
Sales Cont.	\$10 - \$50		\$120,306,807		\$144,588,797	-\$24,281,990
Prize Exp. %	\$10 - \$50		71.0%		71.0%	0.0%
		FY 2009		FY 2008		Difference
Sales	Instant		\$1,494,683,976		\$1,530,934,332	-\$36,250,356
Prize Exp.	Instant		\$1,007,426,297		\$1,034,378,936	-\$26,952,639
Sales Cont.	Instant		\$487,257,679		\$496,555,396	-\$9,297,717
Prize Exp. %	Instant		67.4%		67.6%	-0.2%

		FY 2009		FY 2008		Difference
Sales	\$1 - \$10		\$1,287,898,961		\$1,264,676,287	\$23,222,674
Prize Exp.	\$1 - \$10		\$858,649,586		\$842,216,523	\$16,433,063
Sales Cont.	\$1 - \$10		\$429,249,375		\$422,459,764	\$6,789,611
Prize Exp. %	\$1 - \$10		66.7%		66.6%	0.1%
		FY 2009		FY 2008		Difference
Sales	\$20 - \$50		\$206,785,015		\$266,258,045	-\$59,473,030
Prize Exp.	\$20 - \$50		\$148,776,712		\$192,162,413	-\$43,385,702
Sales Cont.	\$20 - \$50		\$58,008,303		\$74,095,632	-\$16,087,328
Prize Exp. %	\$20 - \$50		71.9%		72.2%	-0.2%
		FY 2009		FY 2008		Difference
Sales	Instant		\$1,494,683,976		\$1,530,934,332	-\$36,250,356
Prize Exp.	Instant		\$1,007,426,297		\$1,034,378,936	-\$26,952,639
Sales Cont.	Instant		\$487,257,679		\$496,555,396	-\$9,297,717
Prize Exp. %	Instant		67.4%		67.6%	-0.2%

Texas Lottery Commission
Weekly Sales Summary
& Comparison to Previous Week
 Unaudited

	Week Ending 03/14/2009		Week Ending 03/07/2009			
	<u>THIS WEEK</u>	% of Sales	<u>LAST WEEK</u>	% of Sales	<u>\$ change</u>	<u>% change</u>
Total Sales	<u>\$72,523,915</u>		<u>\$83,547,393</u>		<u>-\$11,023,478</u>	-13.19%
Instant Tickets	<u>\$53,754,084</u>	74.1%	<u>\$59,552,257</u>	71.3%	<u>-\$5,798,173</u>	-9.74%
Lotto Texas	\$4,752,592	6.6%	\$4,928,440	5.9%	-\$175,848	-3.57%
Pick 3	\$5,850,166	8.1%	\$6,133,789	7.3%	-\$283,623	-4.62%
Pick 3 Sum It Up	\$120,685	0.2%	\$128,599	0.2%	-\$7,915	-6.15%
Cash 5	\$1,418,127	2.0%	\$1,487,185	1.8%	-\$69,058	-4.64%
Texas Two Step	\$2,112,571	2.9%	\$1,984,358	2.4%	\$128,213	6.46%
Mega Millions	\$2,782,204	3.8%	\$6,898,457	8.3%	-\$4,116,253	-59.67%
Megaplier	\$698,214	1.0%	\$1,349,427	1.6%	-\$651,213	-48.26%
Daily 4	\$925,615	1.3%	\$971,645	1.2%	-\$46,030	-4.74%
Daily 4 Sum It Up	<u>\$109,658</u>	0.2%	<u>\$113,236</u>	0.1%	<u>-\$3,579</u>	-3.16%
Total Online Sales	<u>\$18,769,831</u>		<u>\$23,995,136</u>		<u>-\$5,225,305</u>	-21.78%

* Totals may not sum due to rounding.

Texas Lottery Commission
Weekly Sales Summary
Unaudited

INSTANT TICKETS
TOP TEN SELLING GAMES

For the Week Ending : 03/14/2009

Rank	Price Point	Game	Sales (Millions)
1	\$ 10	STACKS OF CASH	\$ 3.380
2	\$ 10	20 TIMES THE MONEY	\$ 2.743
3	\$ 3	BONUS CASHWORD	\$ 2.719
4	\$ 5	BUST THE BANK	\$ 2.638
5	\$ 5	3 OF A KIND	\$ 2.467
6	\$ 7	DAZZLIN' DIAMOND 7'S	\$ 2.443
7	\$ 20	SUPER SET FOR LIFE	\$ 2.337
8	\$ 5	POT O'GOLD	\$ 2.181
9	\$ 10	SET FOR LIFE	\$ 1.894
10	\$ 5	BONUS BREAK THE BANK	\$ 1.685

Texas Lottery Commission
Prize Payout Tracking Report
Unaudited

Through Week Ending 03/14/2009

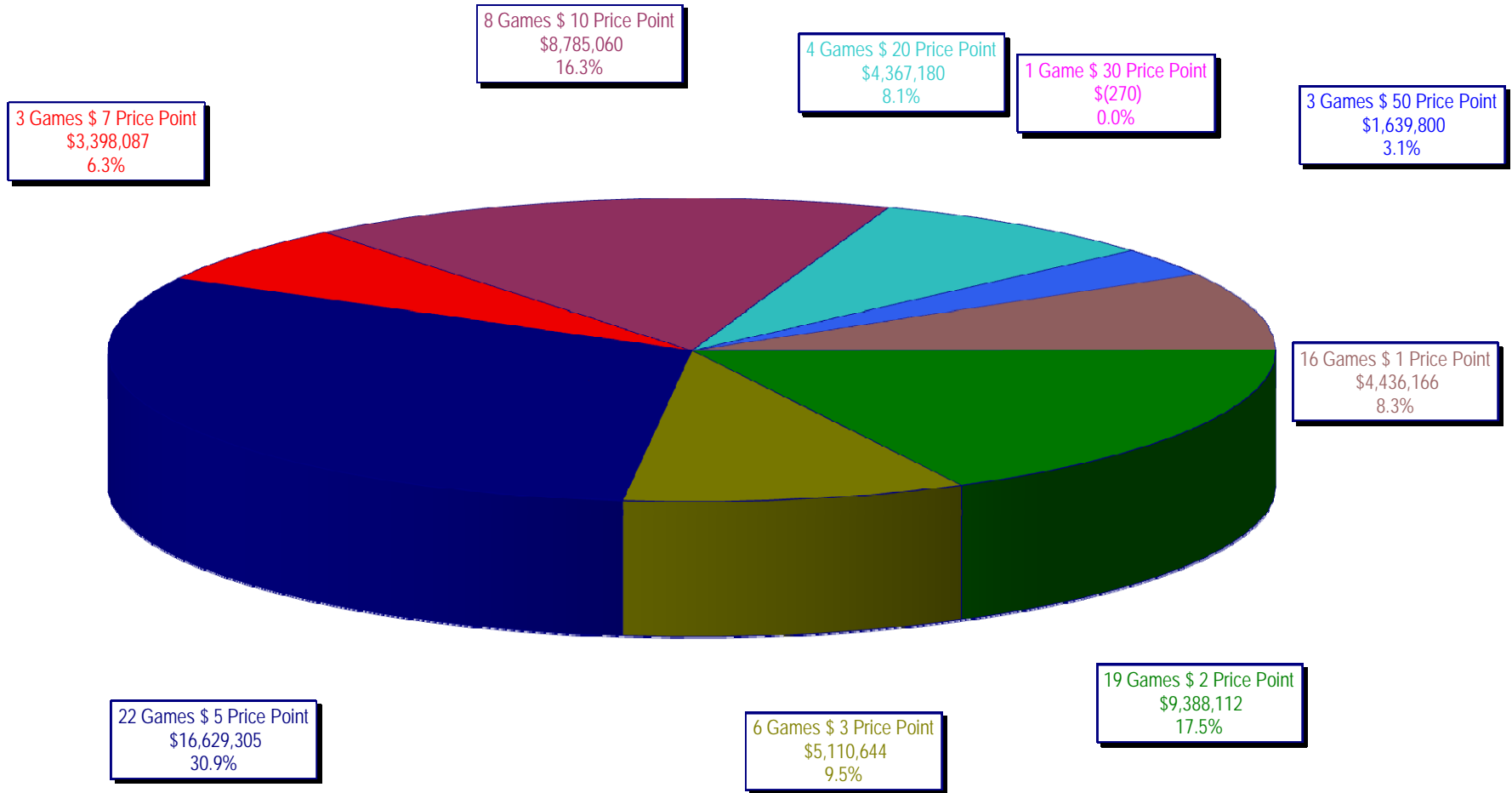
On-Line Sales

		FY Sales Through Week Ending 3/14/2009		FY Prize Expense Through Week Ending 3/14/2009	Actual* Prize Payout	Base Payout (Prize Pool)
Lotto	\$	103,627,656	\$	51,916,558	50.10%	50.00%
Pick 3		154,192,004		77,545,160	50.29%	50.00%
Pick 3 Sum It Up		3,257,954		1,483,517	45.54%	50.00%
Cash 5		38,508,346		19,356,876	50.27%	50.00%
Texas Two-Step		28,178,070		15,293,996	54.28%	50.00%
Mega Millions		100,997,527		49,750,296	49.26%	50.00%**
Megaplier		23,284,960		9,461,040	40.63%	N/A
Daily 4		23,780,477		11,245,875	47.29%	50.00%
Daily 4-Sum It Up		2,962,671		1,265,217	42.71%	50.00%
Totals	\$	478,789,663	\$	237,318,535	49.57%	

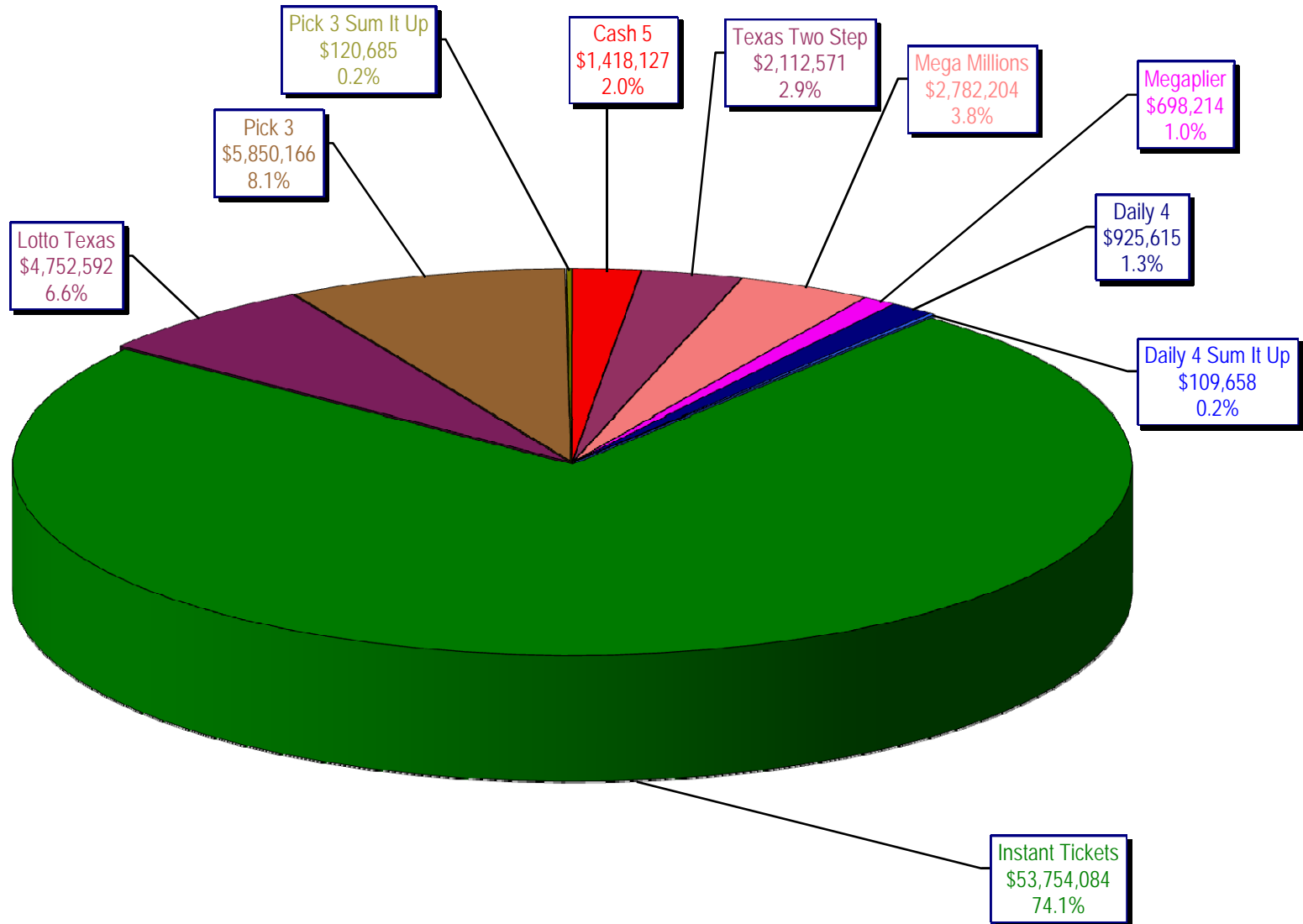
* Before Unclaimed Prizes

** Estimated; depends on # of guaranteed prizes won in Texas

Texas Lottery Commission
Instant Ticket Sales
For the Week Ending 03/14/2009
(Unaudited)



Texas Lottery Commission
All Game Sales
For the Week Ending 03/14/2009
(Unaudited)



Texas Lottery Commission - Weekly Sales Summary for FY 2009 (Unaudited)

Week Ended	Instant Games	New Games & Dates	Lotto Texas	Jackpot W S	Pick 3	Pick 3 Sum It Up	Cash 5	Texas Two Step	Jackpot M/T TH/F	Mega Millions	Jackpot T F	Megaplier	Daily 4	Daily 4 Sum It Up	Total	Per Cap.
9/6/2008	50,944,343.00	1108 (\$2.N), 1088 (\$3.N) - 9/01/08	3,378,718.00	5 6	5,436,414.00	122,123.00	1,396,622.00	890,346.00	350 450	2,445,490.00	12 16	649,090.00	786,482.50	109,834.00	66,159,462.50	2.77
9/13/2008	46,309,551.00	1109 (\$1.N), 1098 (\$5.N) - 9/08/08	3,020,089.00	7 8	4,705,585.50	105,899.00	1,279,412.00	856,199.00	600 200	2,327,214.00	24 12	617,672.00	696,633.00	96,156.50	60,014,411.00	2.51
9/20/2008	42,923,171.00	0	3,054,093.00	9 10	4,121,734.50	90,718.00	1,155,350.00	637,792.00	225 250	1,978,127.00	15 12	540,225.00	627,210.00	86,013.50	55,214,434.00	2.31
9/27/2008	47,042,801.00	1111 (\$2.N), 1099 (\$5.N) - 9/22/08	3,427,671.00	11 12	4,821,563.00	103,189.50	1,288,062.00	834,307.00	275 425	2,322,862.00	16 24	617,085.00	709,741.50	97,858.00	61,265,140.00	2.56
10/4/2008	50,747,162.00	1113 (\$1.N) 9/29/08	3,675,683.00	13 14	5,305,711.00	116,332.50	1,369,040.00	1,074,874.00	525 650	2,671,927.00	32 42	693,845.00	770,782.50	106,277.00	66,531,634.00	2.78
10/11/2008	49,763,789.00	0	3,732,365.00	15 16	5,287,094.00	114,665.50	1,370,334.00	1,305,250.00	800 975	2,306,070.00	12 16	622,120.00	778,204.00	106,395.00	65,386,286.50	2.74
10/18/2008	49,299,053.00	1117 (\$3.N), 1118 (\$20.N) - 10/13/08	3,780,438.00	17 18	5,149,258.00	109,530.00	1,355,601.00	741,849.00	200 200	2,500,644.00	23 32	652,198.00	776,366.00	102,056.00	64,466,993.00	2.70
10/25/2008	49,977,581.00	1119 (\$1.N), 1120 (\$5.N) - 10/20/08	3,210,762.00	4 5	5,099,671.00	107,104.50	1,339,079.00	789,649.00	225 275	2,456,965.00	42 12	641,206.00	778,434.00	102,972.50	64,503,424.00	2.70
11/1/2008	50,346,542.00	1121 (\$2.N), 1122 (\$10.N) - 10/27/08	3,325,641.00	6 7	5,234,124.00	109,983.00	1,339,046.00	946,035.00	375 475	2,347,596.00	16 23	626,235.00	805,572.00	104,612.50	65,185,386.50	2.73
11/8/2008	54,860,087.00	1123 (\$3.N), 1124 (\$7.N) - 11/03/08 1103 (\$3.N) - 11/03/08, 1063 (\$3.N) - 11/07/08	3,290,417.00	4 5	5,686,701.00	118,495.00	1,397,985.00	1,158,101.00	625 750	2,729,302.50	31 42	692,662.00	871,230.00	112,175.50	70,917,156.00	2.97
11/15/2008	53,484,812.00	1125 (\$1.N), 1126 (\$5.N) - 11/10/08	3,336,934.00	6 7	5,459,984.00	112,884.00	1,366,024.00	766,955.00	200 225	3,102,251.00	51 62	749,736.00	830,957.00	104,094.00	69,314,631.00	2.90
11/22/2008	52,806,511.00	0	3,452,481.00	8 9	5,329,591.00	108,861.50	1,358,271.00	743,950.00	200 200	3,666,517.00	73 86	847,201.00	849,077.50	104,797.50	69,267,258.50	2.90
11/29/2008	52,199,741.00	1127 (\$2.N), 1128 (\$5.N) - 11/24/08	3,585,374.00	10 11	5,340,783.50	111,443.00	1,315,233.00	686,077.00	200 225	4,441,715.00	96 111	968,906.00	845,475.50	102,569.00	69,597,317.00	2.91
12/6/2008	56,731,851.00	0	3,794,991.00	12 13	5,752,593.00	121,663.50	1,416,446.00	780,328.00	250 200	6,238,355.00	128 146	1,270,214.00	881,841.50	107,357.00	77,095,640.00	3.23
12/13/2008	54,109,617.00	1129 (\$1.N) - 12/08/08	3,315,658.00	4 5	5,580,770.00	114,295.50	1,384,858.00	766,893.00	225 250	9,150,536.00	170 207	1,691,121.00	846,176.50	101,919.50	77,061,844.50	3.22
12/20/2008	55,777,328.00	1104 (\$2.N), 1105 (\$5.N), 1106 (\$10.N) - 12/15/08	3,432,340.00	6 7	5,741,120.00	116,075.50	1,401,805.00	741,945.00	200 200	2,736,234.00	12 16	687,875.00	871,579.50	104,543.00	71,610,845.00	3.00
12/27/2008	57,597,885.00	1077 (\$1.N), 1110 (\$1.N) - 12/22/08	3,582,169.00	8 4	5,628,081.50	115,323.00	1,340,590.00	708,906.00	225 250	2,842,167.00	22 29	706,042.00	828,346.00	100,146.00	73,449,655.50	3.07
1/3/2009	57,582,115.00	0	3,784,763.00	5 6	5,690,220.50	120,519.50	1,406,807.00	934,000.00	325 525	3,190,457.00	37 46	780,850.00	885,674.00	106,736.50	74,482,142.50	3.12
1/10/2009	54,250,945.00	1135 (\$2.N), 1136 (\$5.N) - 1/5/09	3,582,400.00	7 8	5,476,890.00	116,674.50	1,403,531.00	1,267,847.00	675 900	2,701,275.00	12 16	681,574.00	868,919.00	104,109.50	70,454,165.00	2.95
1/17/2009	51,625,339.00	1137 (\$1.N), 1138 (\$3.N) - 1/12/09	3,668,302.50	9 10	5,443,159.00	112,605.00	1,387,958.00	778,563.00	200 200	2,683,707.00	22 12	675,416.00	852,987.00	98,907.50	67,326,944.00	2.82
1/24/2009	52,789,573.00	1115 (\$2.N), 1116 (\$5.N) - 1/19/09	3,723,835.50	11 12	5,514,547.50	115,827.50	1,376,695.00	860,483.00	225 325	2,692,611.00	16 21	676,936.00	836,996.00	99,541.00	68,687,045.50	2.87
1/31/2009	55,453,471.00	1080 (\$1.N), 1024 (\$20.R) - 1/26/09 1062 (\$5.N) - 1/28/09	3,837,299.00	13 14	5,700,714.50	121,794.50	1,403,756.00	1,070,879.00	450 600	3,002,883.00	30 40	731,253.00	925,937.50	113,755.50	72,361,743.00	3.03
2/7/2009	62,247,711.00	1035 (\$2.N), 1144 (\$5.N), 1058 (\$10.N) - 2/2/09	4,092,117.00	15 16	6,336,717.00	134,543.00	1,481,812.00	842,746.00	200 225	3,509,032.00	50 60	829,550.00	1,007,529.00	120,267.50	80,602,024.50	3.37
2/14/2009	60,509,056.00	1146 (\$7.N), 1089 (\$1.N) - 2/9/09	4,119,193.00	17 18	6,363,028.00	133,901.50	1,445,616.00	1,013,987.00	325 450	4,082,572.00	73 85	928,813.00	1,010,898.50	120,068.50	79,727,133.50	3.34
2/21/2009	59,194,623.00	1046 (\$2.N), 1140 (\$5.N) - 2/16/09	4,326,401.00	19 20	6,038,807.50	128,493.00	1,439,312.00	1,268,803.00	600 750	5,614,471.00	103 120	1,178,133.00	988,075.00	115,703.50	80,292,822.00	3.36
2/28/2009	58,857,216.00	1132 (\$10.N), 1149 (\$1.N) - 2/23/09	4,526,304.00	21 22	6,084,457.50	128,979.50	1,439,607.00	1,668,414.00	925 1,150	7,676,975.00	145 171	1,504,895.00	973,121.00	114,171.00	82,974,140.00	3.47
3/7/2009	59,552,257.00	0	4,928,440.00	23 25	6,133,789.00	128,599.00	1,487,185.00	1,984,358.00	1,350 1,600	6,898,457.00	212 12	1,349,427.00	971,644.50	113,236.00	83,547,392.50	3.50
3/14/2009	53,754,084.00	1139 (\$2.N), 1079 (\$5.N) - 3/09/09	4,752,592.00	26 28	5,850,166.00	120,684.50	1,418,127.00	2,112,571.00	1,900 2,150	2,782,204.00	16 26	698,214.00	925,615.00	109,657.50	72,523,915.00	3.03
weekly change	-9.74%		-3.57%		-4.62%	-6.15%	-4.64%	6.46%		-59.67%		-48.26%	-4.74%	-3.16%	-13.19%	
	SALES		SALES		SALES	SALES	SALES	SALES		SALES		SALES	SALES	SALES	SALES	% of Sales
Startup to date	34,975,269,978.00		10,382,724,703.00		3,452,910,956.00	9,743,783.50	2,157,664,356.00	454,443,788.00		1,027,136,121.50		241,492,994.00	65,997,448.00	11,301,474.00	52,986,819,574.00	100.0%
Calendar Year to date	593,366,303.00		43,355,411.00		61,751,457.00	175,670.50	14,925,902.00	13,284,651.00		43,179,218.00		9,625,179.00	9,789,789.50	1,160,666.50	790,614,247.50	100.0%
Fiscal Year to date 2009	1,494,683,976.00		103,627,656.00		154,192,003.50	3,257,953.50	38,508,346.00	28,178,070.00		100,997,526.50		23,284,960.00	23,780,476.50	2,962,670.50	1,973,473,638.50	100.0%