



*WEEKLY SALES SUMMARY*

Unaudited

[Week Ending: 03/16/2013](#)

Texas Lottery Commission  
Fiscal Year to Date Sales Comparison  
Unaudited

Through the week ending 03/16/2013 (29 weeks)

Sales by Game	FY 2011 *	FY 2012 **	FY 2013	\$ Change		% Change	
				FY 2013 to FY 2011	FY 2013 to FY 2012	FY 2013 to FY 2011	FY 2013 to FY 2012
Instants	\$ 1,560,263,422	\$ 1,659,844,603	\$ 1,731,684,412	\$ 171,420,990	\$ 71,839,809	11.0%	4.3%
Lotto Texas	96,022,638	95,021,055	83,219,077	-12,803,561	-11,801,978	-13.3%	-12.4%
Pick 3	151,257,211	147,641,934	145,614,875	-5,642,336	-2,027,059	-3.7%	-1.4%
Pick 3 Sum It Up	3,045,805	3,036,439	2,734,668	-311,138	-301,771	-10.2%	-9.9%
Cash Five	35,645,662	35,859,595	30,661,077	-4,984,585	-5,198,518	-14.0%	-14.5%
Texas Two Step	25,999,279	35,903,810	32,233,630	6,234,351	-3,670,180	24.0%	-10.2%
Mega Millions	106,503,791	87,506,204	55,926,938	-50,576,853	-31,579,266	-47.5%	-36.1%
Megaplier	21,809,743	19,133,602	13,134,432	-8,675,311	-5,999,170	-39.8%	-31.4%
Daily 4	31,465,009	34,985,158	39,119,655	7,654,646	4,134,497	24.3%	11.8%
Daily 4 Sum It Up	2,455,333	2,574,877	2,567,872	112,539	-7,005	4.6%	-0.3%
Powerball	47,656,740	86,046,533	145,886,495	98,229,755	59,839,963	206.1%	69.5%
Power Play	11,428,447	15,695,378	15,211,904	3,783,457	-483,474	33.1%	-3.1%
All or Nothing	-	-	47,003,382	47,003,382	47,003,382	-	-
<b>Total</b>	<b>\$ <u>2,093,553,079</u></b>	<b>\$ <u>2,223,249,186</u></b>	<b>\$ <u>2,344,998,416</u></b>	<b>\$ <u>251,445,338</u></b>	<b>\$ <u>121,749,231</u></b>	<b>12.0%</b>	<b>5.5%</b>

\* 3 extra days

\*\* 2 extra days

Texas Lottery Commission  
Fiscal Year to Date Cumulative Average Sales Comparison  
Unaudited

Through the week ending 03/16/2013 (29 weeks)

Sales by Game	FY 2011	FY 2012	FY 2013
Instant	\$ 7,801,317	\$ 8,340,928	\$ 8,790,276
Lotto Texas	480,113	477,493	422,432
Pick 3	756,286	741,919	739,162
Pick 3 Sum It Up	15,229	15,258	13,882
Cash Five	178,228	180,199	155,640
Texas Two Step	129,996	180,421	163,622
Mega Millions	532,519	439,730	283,893
Megaplier	109,049	96,149	66,672
Daily 4	157,325	175,805	198,577
Daily 4 Sum It Up	12,277	12,939	13,035
Powerball	238,284	432,395	740,541
Power Play	57,142	78,871	77,218
All or Nothing	-	-	248,695 *
<b>Total</b>	<b>\$ <u>10,467,765</u></b>	<b>\$ <u>11,172,106</u></b>	<b>\$ <u>11,913,645</u></b>

thru 03/19/2011  
200 days

thru 03/17/2012  
199 days

thru 03/16/2013  
197 days  
\* 189 days

Texas Lottery Commission  
Fiscal Year Over Year Change in Sales  
Unaudited  
FY 2013 Compared to FY 2012

Week	FY 2013 Week Ending	INSTANT TICKETS				DRAW GAMES				TOTAL SALES			
		FY 2013	FY 2012	Difference	% change - Cumulative Sales	FY 2013	FY 2012	Difference	% change - Cumulative Sales	FY 2013	FY 2012	Difference	% change - Cumulative Sales
1	9/1/2012**	\$9,611,328	\$25,147,181	(\$15,535,853)	-61.8%	\$3,712,535	\$9,704,561	(\$5,992,026)	-61.7%	\$13,323,863	\$34,851,742	(\$21,527,879)	-61.8%
2	9/8/2012	\$56,941,761	\$50,591,068	\$6,350,693	12.6%	\$19,305,417	\$17,681,853	\$1,623,564	9.2%	\$76,247,178	\$68,272,921	\$7,974,257	11.7%
3	9/15/2012	\$56,302,875	\$49,835,063	\$6,467,812	13.0%	\$20,857,230	\$16,842,326	\$4,014,904	23.8%	\$77,160,105	\$66,677,389	\$10,482,716	15.7%
4	9/22/2012	\$54,974,438	\$49,777,138	\$5,197,300	10.4%	\$20,570,277	\$17,504,800	\$3,065,477	17.5%	\$75,544,715	\$67,281,938	\$8,262,777	12.3%
5	9/29/2012	\$54,606,674	\$51,040,274	\$3,566,400	7.0%	\$20,462,690	\$18,653,100	\$1,809,591	9.7%	\$75,069,364	\$69,693,374	\$5,375,991	7.7%
6	10/6/2012	\$59,223,327	\$53,715,157	\$5,508,170	10.3%	\$19,279,973	\$17,225,680	\$2,054,293	11.9%	\$78,503,300	\$70,940,837	\$7,562,463	10.7%
7	10/13/2012	\$57,075,606	\$51,942,121	\$5,133,485	9.9%	\$18,638,467	\$17,854,980	\$783,487	4.4%	\$75,714,073	\$69,797,101	\$5,916,972	8.5%
8	10/20/2012	\$56,630,134	\$52,837,769	\$3,792,365	7.2%	\$18,998,943	\$19,558,519	(\$559,577)	-2.9%	\$75,629,077	\$72,396,288	\$3,232,789	4.5%
9	10/27/2012	\$55,789,743	\$52,206,644	\$3,583,099	6.9%	\$20,130,190	\$21,504,565	(\$1,374,376)	-6.4%	\$75,919,933	\$73,711,209	\$2,208,724	3.0%
10	11/3/2012	\$58,142,777	\$56,265,310	\$1,877,467	3.3%	\$20,638,008	\$20,870,086	(\$232,079)	-1.1%	\$78,780,785	\$77,135,396	\$1,645,389	2.1%
11	11/10/2012	\$57,484,804	\$55,682,645	\$1,802,159	3.2%	\$20,862,872	\$17,862,404	\$3,000,468	16.8%	\$78,347,676	\$73,545,049	\$4,802,627	6.5%
12	11/17/2012	\$55,805,228	\$54,978,079	\$827,149	1.5%	\$21,660,705	\$17,879,985	\$3,780,721	21.1%	\$77,465,933	\$72,858,064	\$4,607,870	6.3%
13	11/24/2012	\$61,331,977	\$53,942,448	\$7,389,529	13.7%	\$27,172,853	\$16,877,145	\$10,295,708	61.0%	\$88,504,830	\$70,819,593	\$17,685,237	25.0%
14	12/1/2012	\$58,420,598	\$57,153,469	\$1,267,129	2.2%	\$62,797,943	\$18,298,636	\$44,499,307	243.2%	\$121,218,541	\$75,452,105	\$45,766,436	60.7%
15	12/8/2012	\$62,489,745	\$55,318,284	\$7,171,461	13.0%	\$19,630,155	\$19,033,326	\$596,829	3.1%	\$82,119,900	\$74,351,610	\$7,768,290	10.4%
16	12/15/2012	\$59,661,880	\$58,612,629	\$1,049,251	1.8%	\$20,064,982	\$20,045,279	\$19,704	0.1%	\$79,726,862	\$78,657,908	\$1,068,955	1.4%
17	12/22/2012	\$63,556,886	\$60,628,256	\$2,928,630	4.8%	\$19,084,653	\$22,572,986	(\$3,488,333)	-15.5%	\$82,641,539	\$83,201,242	(\$559,703)	-0.7%
18	12/29/2012	\$63,547,886	\$63,065,007	\$482,879	0.8%	\$17,359,874	\$19,948,521	(\$2,588,647)	-13.0%	\$80,907,760	\$83,013,528	(\$2,105,768)	-2.5%
19	1/5/2013	\$60,452,721	\$60,479,896	(\$27,175)	0.0%	\$18,833,047	\$17,331,888	\$1,501,159	8.7%	\$79,285,768	\$77,811,784	\$1,473,984	1.9%
20	1/12/2013	\$58,862,997	\$57,689,526	\$1,173,471	2.0%	\$18,879,167	\$17,568,732	\$1,310,435	7.5%	\$77,742,164	\$75,258,258	\$2,483,906	3.3%
21	1/19/2013	\$58,494,057	\$58,704,854	(\$210,797)	-0.4%	\$19,258,004	\$19,886,540	(\$628,537)	-3.2%	\$77,752,061	\$78,591,394	(\$839,334)	-1.1%
22	1/26/2013	\$57,871,744	\$57,611,325	\$260,419	0.5%	\$20,093,215	\$20,641,697	(\$548,483)	-2.7%	\$77,964,959	\$78,253,022	(\$288,064)	-0.4%
23	2/2/2013	\$61,846,715	\$65,553,366	(\$3,706,651)	-5.7%	\$21,032,335	\$23,689,855	(\$2,657,521)	-11.2%	\$82,879,050	\$89,243,221	(\$6,364,172)	-7.1%
24	2/9/2013	\$70,374,906	\$75,070,485	(\$4,695,579)	-6.3%	\$21,183,638	\$28,361,583	(\$7,177,945)	-25.3%	\$91,558,544	\$103,432,068	(\$11,873,524)	-11.5%
25	2/16/2013	\$71,002,438	\$66,679,947	\$4,322,491	6.5%	\$19,295,197	\$19,588,615	(\$293,418)	-1.5%	\$90,297,635	\$86,268,562	\$4,029,073	4.7%
26	2/23/2013	\$71,203,934	\$64,868,899	\$6,335,035	9.8%	\$19,729,989	\$19,965,388	(\$235,399)	-1.2%	\$90,933,923	\$84,834,287	\$6,099,636	7.2%
27	3/2/2013	\$74,551,567	\$67,135,065	\$7,416,502	11.0%	\$20,278,327	\$20,947,181	(\$668,854)	-3.2%	\$94,829,894	\$88,082,246	\$6,747,648	7.7%
28	3/9/2013	\$75,360,138	\$68,299,006	\$7,061,132	10.3%	\$21,447,763	\$22,152,639	(\$704,876)	-3.2%	\$96,807,901	\$90,451,645	\$6,356,256	7.0%
29	3/16/2013	\$70,065,528	\$65,013,692	\$5,051,836	7.8%	\$22,055,563	\$23,351,718	(\$1,296,155)	-5.6%	\$92,121,091	\$88,365,410	\$3,755,682	4.3%
30	3/23/2013		\$64,035,255				\$27,416,609				\$91,451,864		
31	3/30/2013		\$65,135,991				\$84,628,987				\$149,764,978		
32	4/6/2013		\$66,860,957				\$19,899,400				\$86,760,357		
33	4/13/2013		\$64,028,898				\$20,220,141				\$84,249,039		
34	4/20/2013		\$63,623,892				\$20,974,282				\$84,598,174		
35	4/27/2013		\$61,743,623				\$20,267,388				\$82,011,011		
36	5/4/2013		\$64,851,962				\$20,642,982				\$85,494,944		
37	5/11/2013		\$65,472,556				\$19,140,768				\$84,613,324		
38	5/18/2013		\$60,572,658				\$18,342,814				\$78,915,472		
39	5/25/2013		\$58,959,028				\$18,618,060				\$77,577,088		
40	6/1/2013		\$57,409,086				\$19,014,645				\$76,423,731		
41	6/8/2013		\$59,845,545				\$20,527,958				\$80,373,503		
42	6/15/2013		\$57,021,498				\$19,386,186				\$76,407,684		

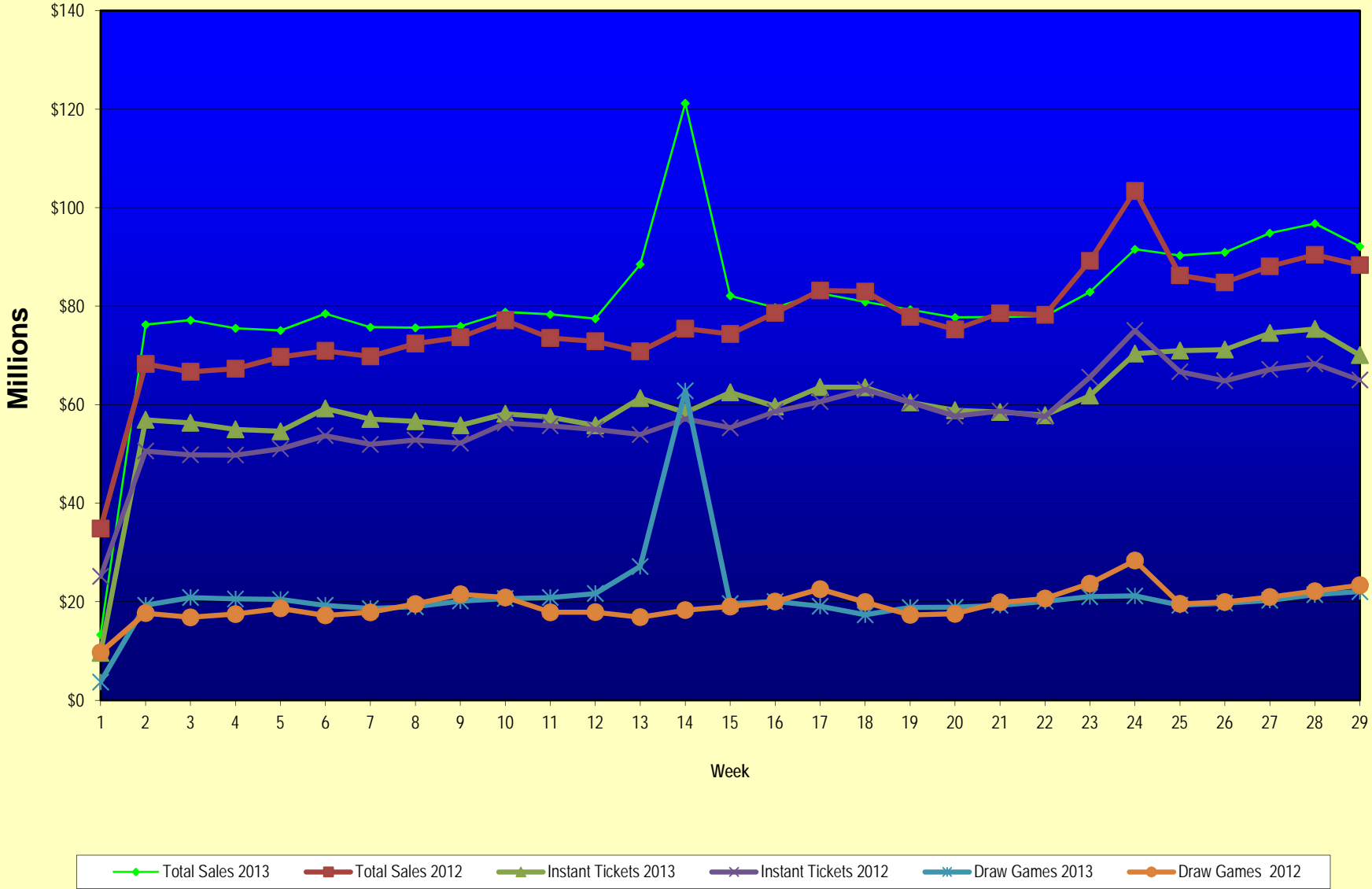
Note: Week 1 is not a full week of sales as this report is prepared on a Fiscal Year basis.

Texas Lottery Commission  
Fiscal Year Over Year Change in Sales  
Unaudited  
FY 2013 Compared to FY 2012

Week	FY 2013 Week Ending	INSTANT TICKETS				DRAW GAMES				TOTAL SALES			
		FY 2013	FY 2012	Difference	% change - Cumulative Sales	FY 2013	FY 2012	Difference	% change - Cumulative Sales	FY 2013	FY 2012	Difference	% change - Cumulative Sales
43	6/22/2013		\$57,892,076				\$17,594,154				\$75,486,230		
44	6/29/2013		\$57,497,435				\$18,153,658				\$75,651,093		
45	7/6/2013		\$60,345,000				\$19,059,152				\$79,404,152		
46	7/13/2013		\$57,683,321				\$18,751,043				\$76,434,364		
47	7/20/2013		\$57,083,343				\$18,769,201				\$75,852,544		
48	7/27/2013		\$54,006,781				\$18,934,103				\$72,940,884		
49	8/3/2013		\$56,557,409				\$20,206,705				\$76,764,114		
50	8/10/2013		\$57,799,452				\$22,832,120				\$80,631,572		
51	8/17/2013		\$54,845,724				\$25,435,624				\$80,281,348		
52	8/24/2013		\$55,661,277				\$17,524,474				\$73,185,751		
	8/31/2013		\$47,363,984				\$14,929,528				\$62,293,512		
Total thru Current Week		\$1,731,684,412	\$1,659,844,603	\$71,839,809	4.3%	\$613,314,004	\$563,404,583	\$49,909,422	8.9%	\$2,344,998,416	\$2,223,249,186	\$121,749,231	5.5%
Fiscal Year Total		\$1,731,684,412	\$3,086,141,354			\$613,314,004	\$1,104,674,559			\$2,344,998,416	\$4,190,815,913		

\*\* FY 2012 includes 3 days; FY 2013 includes 1 day.

### Texas Lottery Commission Fiscal Year Over Year Change in Sales



Note: Week 1 is not a full week of sales as this report is prepared on a Fiscal Year basis.

Texas Lottery Commission  
**Instant Tickets by Price Point**  
Sales, Prize Expense, Sales Contribution and Payout Percentage With Year Over Year Changes  
Unaudited

Fiscal Year	Price Point	# of Active Games	FY Sales	% of Instant Ticket Sales	Year over Year Change in Sales	FY Prize Expense	Year over Year Change in Prize Expense	FY Sales Contribution	Year over Year Change in Contribution	Average Prize Payout %	Year over Year Change in Payout %
2012	\$1.00	30	123,128,606	7.4%		75,155,918		47,972,688		61.0%	0.5%
thru	\$2.00	31	224,971,104	13.6%		146,275,773		78,695,331		65.0%	-0.8%
3/17/2012	\$3.00	16	202,566,480	12.2%		132,812,763		69,753,717		65.6%	0.0%
	\$5.00	40	531,040,935	32.0%		361,271,755		169,769,180		68.0%	0.2%
	\$7.00	4	18,187,778	1.1%		12,367,572		5,820,206		68.0%	0.0%
	\$10.00	17	269,835,970	16.3%		190,362,850		79,473,120		70.5%	-0.7%
	\$20.00	6	221,766,980	13.4%		165,544,542		56,222,438		74.6%	0.0%
	\$50.00	2	68,346,750	4.1%		53,075,991		15,270,759		77.7%	0.0%
<b>Total</b>		<b>146</b>	<b>\$1,659,844,603</b>			<b>\$1,136,867,164</b>		<b>\$522,977,439</b>		<b>68.5%</b>	<b>0.0%</b>
2013	\$1.00	29	105,862,369	6.1%		64,860,099		41,002,270		61.3%	1.1%
thru	\$2.00	34	224,197,658	12.9%		145,740,003		78,457,655		65.0%	-0.1%
3/16/2013	\$3.00	18	210,091,401	12.1%		137,709,817		72,381,584		65.5%	0.0%
	\$5.00	49	534,578,995	30.9%		363,464,368		171,114,627		68.0%	0.0%
	\$7.00	2	16,206,589	0.9%		11,015,072		5,191,517		68.0%	0.0%
	\$10.00	12	317,458,520	18.3%		225,278,355		92,180,165		71.0%	0.1%
	\$20.00	8	242,053,780	14.0%		181,213,244		60,840,536		74.9%	0.1%
	\$50.00	3	81,235,100	4.7%		63,069,356		18,165,744		77.6%	0.0%
<b>Total</b>		<b>155</b>	<b>\$1,731,684,412</b>			<b>\$1,192,350,314</b>		<b>\$539,334,098</b>		<b>68.9%</b>	<b>0.4%</b>
<b>Variance</b>	\$1.00	-1	-17,266,237		-14.0%	-10,295,819	-13.7%	-6,970,418	-14.5%	0.23%	
2013 to	\$2.00	3	-773,446		-0.3%	-535,770	-0.4%	-237,676	-0.3%	-0.01%	
2012	\$3.00	2	7,524,921		3.7%	4,897,054	3.7%	2,627,867	3.8%	-0.02%	
	\$5.00	9	3,538,060		0.7%	2,192,613	0.6%	1,345,447	0.8%	-0.04%	
	\$7.00	-2	-1,981,189		-10.9%	-1,352,500	-10.9%	-628,689	-10.8%	-0.03%	
	\$10.00	-5	47,622,550		17.6%	34,915,506	18.3%	12,707,044	16.0%	0.42%	
	\$20.00	2	20,286,800		9.1%	15,668,702	9.5%	4,618,098	8.2%	0.22%	
	\$50.00	1	12,888,350		18.9%	9,993,365	18.8%	2,894,985	19.0%	-0.02%	
<b>Total</b>		<b>9</b>	<b>\$71,839,809</b>		<b>4.3%</b>	<b>\$55,483,150</b>	<b>4.9%</b>	<b>\$16,356,659</b>	<b>3.1%</b>	<b>0.36%</b>	

Notes - Instant Ticket Variances

Texas Lottery Commission  
**Instant Tickets by Price Point**  
**Sales, Prize Expense, Sales Contribution and Payout Percentage With Year Over Year Changes**  
 Unaudited

			FY 2013		FY 2012	Difference
Sales	\$1 - \$7	1	\$1,090,937,012		\$1,099,894,903	-\$8,957,891
Prize Exp.	\$1 - \$7	1	\$722,789,359		\$727,883,781	-\$5,094,423
Sales Cont.	\$1 - \$7	1	\$368,147,653		\$372,011,122	-\$3,863,468
Prize Exp. %	\$1 - \$7	1	66.3%		66.2%	0.1%
			FY 2013		FY 2012	Difference
Sales	\$10 - \$50	2	\$640,747,400		\$559,949,700	\$80,797,700
Prize Exp.	\$10 - \$50	2	\$469,560,956		\$408,983,383	\$60,577,573
Sales Cont.	\$10 - \$50	1	\$171,186,444		\$150,966,317	\$20,220,127
Prize Exp. %	\$10 - \$50	2	73.3%		73.0%	0.2%
			FY 2013		FY 2012	Difference
Sales	Instant		\$1,731,684,412		\$1,659,844,603	\$71,839,809
Prize Exp.	Instant		\$1,192,350,314		\$1,136,867,164	\$55,483,150
Sales Cont.	Instant		\$539,334,098		\$522,977,439	\$16,356,659
Prize Exp. %	Instant		68.9%		68.5%	0.4%

			FY 2013		FY 2012	Difference
Sales	\$1 - \$10		\$1,408,395,532		\$1,369,730,873	\$38,664,659
Prize Exp.	\$1 - \$10		\$948,067,714		\$918,246,631	\$29,821,083
Sales Cont.	\$1 - \$10		\$460,327,818		\$451,484,242	\$8,843,576
Prize Exp. %	\$1 - \$10		67.3%		67.0%	0.3%
			FY 2013		FY 2012	Difference
Sales	\$20 - \$50		\$323,288,880		\$290,113,730	\$33,175,150
Prize Exp.	\$20 - \$50		\$244,282,600		\$218,620,533	\$25,662,067
Sales Cont.	\$20 - \$50		\$79,006,280		\$71,493,197	\$7,513,083
Prize Exp. %	\$20 - \$50		75.6%		75.4%	0.2%
			FY 2013		FY 2012	Difference
Sales	Instant		\$1,731,684,412		\$1,659,844,603	\$71,839,809
Prize Exp.	Instant		\$1,192,350,314		\$1,136,867,164	\$55,483,150
Sales Cont.	Instant		\$539,334,098		\$522,977,439	\$16,356,659
Prize Exp. %	Instant		68.9%		68.5%	0.4%



Texas Lottery Commission  
**Weekly Sales Summary**  
**& Comparison to Previous Week**  
 Unaudited

	Week Ending 03/16/2013	% of Sales	Week Ending 03/09/2013	% of Sales	\$ change	% change
	<u>THIS WEEK</u>		<u>LAST WEEK</u>			
Total Sales	<u>\$92,121,091</u>		<u>\$96,807,901</u>		<u>-\$4,686,810</u>	-4.84%
Instant Tickets	<u>\$70,065,528</u>	76.1%	<u>\$75,360,138</u>	77.8%	<u>-\$5,294,610</u>	-7.03%
Lotto	\$2,704,692	2.9%	\$2,711,613	2.8%	-\$6,921	-0.26%
Pick 3	\$5,296,558	5.7%	\$5,687,827	5.9%	-\$391,270	-6.88%
Pick 3 Sum It Up	\$99,894	0.1%	\$106,680	0.1%	-\$6,786	-6.36%
Cash Five	\$1,069,350	1.2%	\$1,111,266	1.1%	-\$41,916	-3.77%
Texas Two Step	\$982,380	1.1%	\$1,024,080	1.1%	-\$41,700	-4.07%
Mega Millions	\$1,796,816	2.0%	\$1,914,669	2.0%	-\$117,853	-6.16%
Megaplier	\$443,221	0.5%	\$465,588	0.5%	-\$22,367	-4.80%
Daily 4	\$1,497,910	1.6%	\$1,592,687	1.6%	-\$94,777	-5.95%
Daily 4 Sum It Up	\$96,023	0.1%	\$105,438	0.1%	-\$9,415	-8.93%
Powerball	\$6,065,856	6.6%	\$4,739,852	4.9%	\$1,326,004	27.98%
Power Play	\$682,736	0.7%	\$558,580	0.6%	\$124,156	22.23%
All or Nothing	\$1,320,128	1.4%	\$1,429,484	1.5%	-\$109,356	-7.65%
Total Draw Game Sales	<u>\$22,055,563</u>		<u>\$21,447,763</u>		<u>\$607,800</u>	2.83%

\* Totals may not sum due to rounding.

Texas Lottery Commission  
Weekly Sales Summary  
Unaudited

INSTANT TICKETS  
TOP TEN SELLING GAMES

For the Week Ending: 03/16/13

Rank	Price Point	Game	Sales (Millions)
1	\$ 10	10X MEGA MONEY	\$ 9.066
2	\$ 5	MAXIMUM JACKPOT	\$ 4.995
3	\$ 20	CASH EXCITEMENT	\$ 4.068
4	\$ 5	\$75,000 CASHWORD-O-RAMA	\$ 2.901
5	\$ 5	FUN 5S	\$ 2.737
6	\$ 3	LOTERIA TEXAS	\$ 2.554
7	\$ 20	\$500 MILLION EXTREME CASH BLAST	\$ 2.267
8	\$ 10	\$200 MILLION CASH SPECTACULAR	\$ 2.110
9	\$ 50	\$7,500,000 FORTUNE	\$ 2.107
10	\$ 20	\$500,000,000 FRENZY	\$ 1.718

Texas Lottery Commission  
Prize Payout Tracking Report  
Unaudited

Through Week Ending 03/16/13

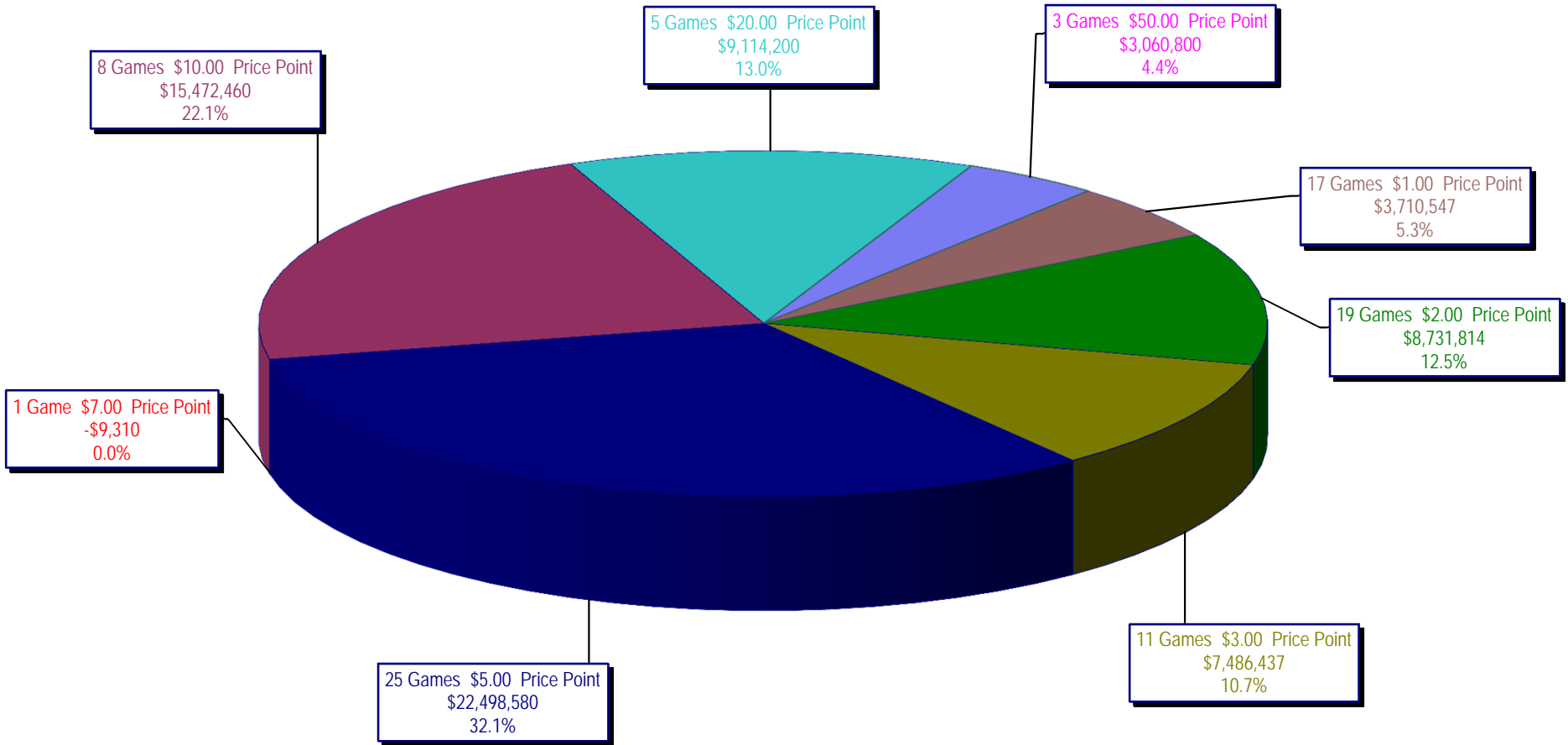
Draw Game Sales

		FY Sales Through Week Ending 3/16/2013		FY Prize Expense Through Week Ending 3/16/2013	Actual* Prize Payout	Base Payout (Prize Pool)
Lotto	\$	83,219,077	\$	61,738,124	74.19%	50.00%
Pick 3		145,614,875		73,153,030	50.24%	50.00%
Pick 3 Sum It Up		2,734,668		1,311,528	47.96%	50.00%
Cash Five		30,661,077		15,332,224	50.01%	50.00%
Texas Two Step		32,233,630		16,110,098	49.98%	50.00%
Mega Millions		55,926,938		27,190,990	48.62%	50.00%**
Megaplier		13,134,432		6,390,816	48.66%	N/A
Daily 4		39,119,655		20,513,175	52.44%	50.00%
Daily 4 Sum It Up		2,567,872		1,113,800	43.37%	50.00%
Powerball		145,886,495		76,416,028	52.38%	50.00%**
Power Play		15,211,904		8,696,692	57.17%	N/A
All or Nothing		47,003,382		27,410,622	58.32%	50.00%
<b>Totals</b>	\$	<b>613,314,004</b>	\$	<b>335,377,127</b>	<b>54.68%</b>	

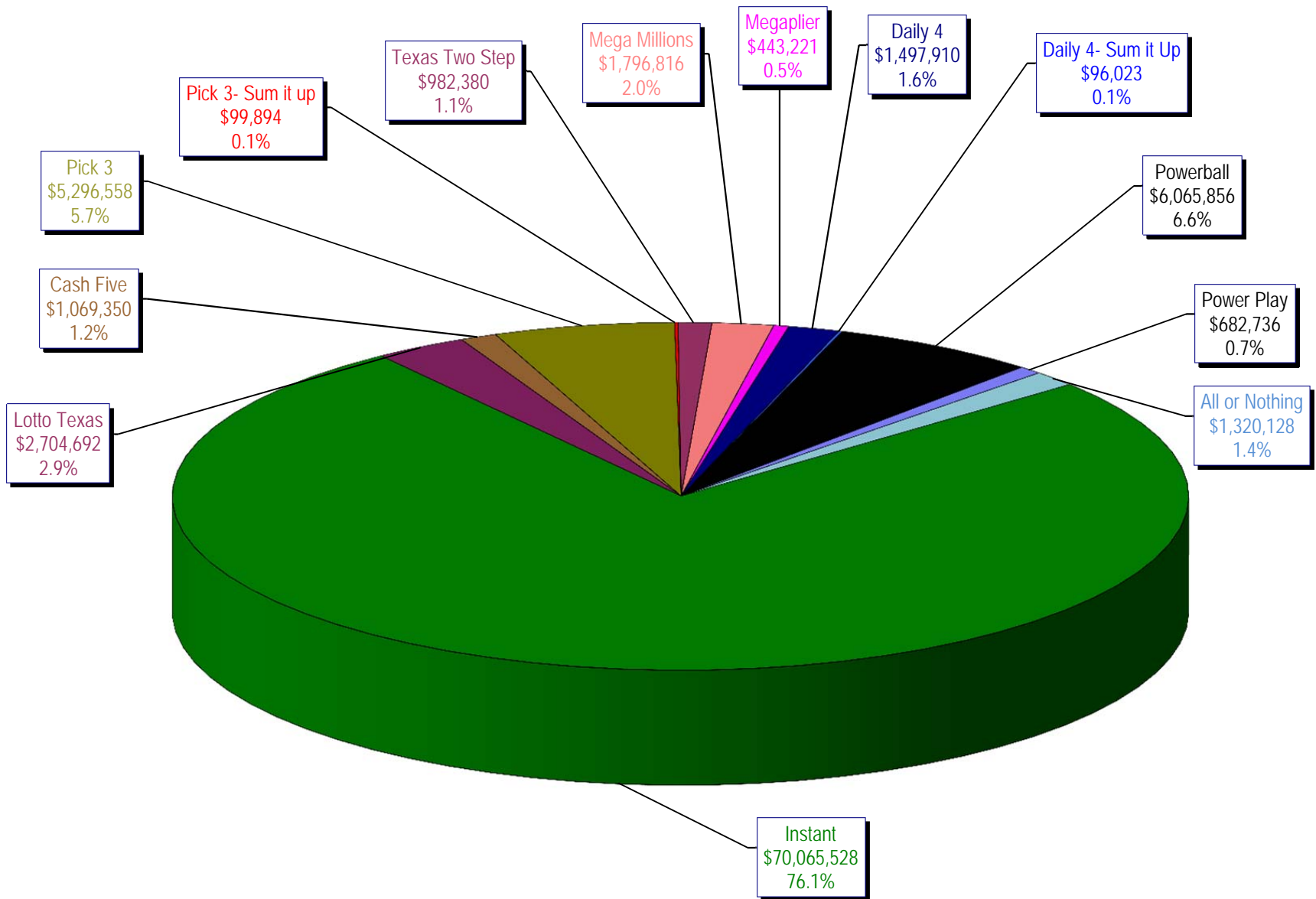
\* Before Unclaimed Prizes

\*\* Estimated; depends on # of guaranteed prizes won in Texas

Texas Lottery Commission  
Instant Ticket Sales  
For the Week Ending 03/16/13  
(Unaudited)



**Texas Lottery Commission  
All Game Sales  
For the Week Ending 03/16/13  
(Unaudited)**



Texas Lottery Commission - Weekly Sales Summary for FY 2013 (Unaudited)

Week Ended	Instant Games	New Games & Dates	Lotto Texas	Jackpot W S	Pick 3	Pick 3 Sum It Up	Cash Five	Texas Two Step	Jackpot M TH	Mega Millions	Jackpot T F	Megaplier	Daily 4	Daily 4 Sum It Up	Powerball	Jackpot W S	Power Play	All or Nothing	Total	Per Cap.
9/1/2012	56,975,312	1446 (\$1, N); 1444 (\$2, N) - 08/27/12	2,972,415	12 13	4,967,337	105,441	1,198,597	1,455,689	500 675	2,769,421	73 83	612,072	1,419,103	97,265	2,680,694	70 80	364,030		75,617,375	2.95
9/8/2012	56,941,761	1440 (\$2, N); 1458 (\$3, N); 1459 (\$5, N) - 09/03/12	3,005,564	14 15	5,112,132	106,959	1,185,494	1,179,003	875 200	3,140,536	93 105	665,392	1,412,279	99,861	3,002,910	90 100	395,287		76,247,178	2.97
9/15/2012	56,302,875	1452 (\$3, N) - 09/10/12	2,999,894	16 17	4,785,209	95,720	1,118,519	894,412	225 200	2,684,227	120 12	580,869	1,290,478	90,795	3,373,296	110 125	417,470	2,526,342	77,160,105	3.01
9/22/2012	54,974,438	1460 (\$1, N); 1461 (\$5, N) - 09/17/12	2,986,898	18 19	4,611,684	89,173	1,091,440	986,264	225 325	1,874,336	15 12	452,082	1,258,191	86,390	4,122,790	149 174	479,344	2,531,686	75,544,715	2.94
9/29/2012	54,606,674	1462 (\$2, N); 1472 (\$10, N) - 09/24/12	3,047,519	20 21	4,708,250	90,752	1,077,739	1,313,257	475 625	1,884,366	14 21	452,334	1,278,847	87,211	3,779,359	200 40	445,091	2,297,966	75,069,364	2.92
10/6/2012	59,223,327	1464 (\$5, N) - 10/01/12	3,164,231	22 23	4,947,571	96,251	1,121,146	1,188,386	800 200	2,055,918	28 36	482,303	1,310,612	89,270	2,266,428	50 40	312,877	2,244,980	78,503,300	3.06
10/13/2012	57,075,606	1465 (\$1, N); 1466 (\$20, N) - 10/08/2012	3,133,742	24 25	4,793,793	89,663	1,074,687	865,146	225 200	2,163,099	45 53	492,614	1,261,858	84,585	2,241,120	50 60	309,684	2,128,476	75,714,073	2.95
10/20/2012	56,630,134	1467 (\$1, N); 1468 (\$5, N) - 10/15/12	3,172,820	26 27	4,959,071	88,413	1,074,980	970,100	225 325	1,984,966	61 12	466,730	1,296,602	84,868	2,447,518	70 80	328,436	2,124,439	75,629,077	2.95
10/27/2012	55,789,743	1469 (\$2, N); 1470 (\$10, N) - 10/22/2012	3,204,694	28 29	5,550,567	96,242	1,063,201	1,226,578	450 600	1,778,725	13 21	430,528	1,381,019	91,618	2,914,062	90 100	371,273	2,021,684	75,919,933	2.96
11/3/2012	58,142,777	1503 (\$5, N) - 10/29/2012	3,392,650	30 31	5,501,964	101,742	1,078,593	860,073	200 225	1,950,117	27 32	462,385	1,393,099	93,773	3,466,242	110 124	424,170	1,913,200	78,780,785	3.07
11/10/2012	57,484,804	1475 (\$1, N); 1476 (\$3, N) - 11/05/2012	3,061,999	32 4	5,468,924	100,767	1,083,928	837,666	200 200	1,783,099	12 13	430,343	1,402,194	94,451	4,246,246	143 168	491,538	1,861,718	78,347,676	3.05
11/17/2012	55,805,228	1477 (\$2, N); 1478 (\$5, N) - 11/12/2012	2,599,190	5 6	5,248,059	91,989	1,059,723	920,319	225 300	1,841,571	19 26	440,783	1,345,121	88,391	5,638,425	185 214	615,323	1,771,812	77,465,933	3.02
11/24/2012	61,331,977	1394 (\$50, N) - 11/19/2012	2,768,876	7 8	5,086,879	91,409	1,021,878	883,407	425 200	2,003,365	33 41	472,723	1,300,693	85,037	10,768,045	250 325	1,053,006	1,637,536	88,504,830	3.45
12/1/2012	58,420,598	0	3,304,053	9 10	5,123,778	97,511	1,086,916	925,805	225 275	2,358,380	49 12	533,175	1,319,684	92,240	43,264,700	550 40	2,894,606	1,797,096	121,218,541	4.72
12/8/2012	62,489,745	1479 (\$1, N); 1485 (\$5, N) - 12/03/12	2,971,837	11 12	5,374,747	101,479	1,129,990	1,359,739	425 575	1,861,503	13 20	445,171	1,391,477	94,879	2,832,293	50 40	362,145	1,704,896	82,119,900	3.20
12/15/2012	59,661,880	0	3,087,087	13 14	5,221,374	98,173	1,104,769	1,928,422	775 1,000	1,933,357	27 35	456,193	1,398,647	88,811	2,808,938	50 40	364,704	1,574,508	79,726,862	3.11
12/22/2012	63,556,886	1481 (\$1, N); 1482 (\$2, N); 1483 (\$5, N) - 12/17/12	3,076,409	15 16	5,170,946	94,116	1,108,894	1,415,548	1,250 200	1,774,922	12 12	431,471	1,385,861	87,012	2,658,349	50 40	349,278	1,531,847	82,641,539	3.22
12/29/2012	63,547,886	0	2,869,329	17 18	4,868,470	90,224	1,041,264	922,869	200 225	1,670,747	18 25	400,587	1,289,758	79,651	2,413,294	50 40	324,222	1,389,460	80,907,760	3.15
1/5/2013	60,452,721	1484 (\$5, N) - 12/31/12	2,962,822	19 20	5,157,831	97,210	1,098,429	1,363,512	350 500	1,865,613	30 39	443,570	1,396,145	87,787	2,524,666	50 60	339,142	1,496,322	79,285,768	3.09
1/12/2013	58,862,997	1386 (\$2, N); 1536 (\$10, N) - 01/07/2013	2,588,023	4 5	4,974,232	92,872	1,079,444	1,622,926	700 900	2,036,427	47 55	471,998	1,345,510	81,625	2,755,940	70 80	349,383	1,480,788	77,742,164	3.03
1/19/2013	58,494,057	01/14/2013; 1538 (\$3, N) - 01/17/2013;	2,670,967	6 7	5,115,846	99,182	1,069,099	906,490	200 225	2,214,850	62 70	498,541	1,374,543	87,921	3,323,356	90 100	408,226	1,488,984	77,752,061	3.03
1/26/2013	57,871,744	0	2,733,016	8 9	4,936,726	91,918	1,047,379	1,178,148	325 475	2,367,780	80 89	526,051	1,401,635	87,842	3,808,150	110 130	454,194	1,460,376	77,964,959	3.04
2/2/2013	61,846,715	1489 (\$2, N); 1486 (\$20, N) - 01/28/2013	2,754,143	10 11	5,220,197	96,971	1,066,170	1,109,445	650 200	1,731,470	12 13	423,745	1,460,770	96,289	5,037,974	151 176	570,151	1,465,010	82,879,050	3.23
2/9/2013	70,374,906	1510 (\$5, N) - 2/4/13; 1537 (\$3, N) - 2/5/13	2,893,143	12 13	5,374,541	101,660	1,110,298	1,053,776	225 325	1,785,080	19 12	435,112	1,483,017	96,782	4,830,224	208 40	551,530	1,468,476	91,558,544	3.57
2/16/2013	71,002,438	1451 (\$3, N); 1453 (\$5, N) - 2/11/13	2,910,257	14 15	5,397,708	99,470	1,091,337	1,430,815	475 650	1,770,362	13 20	431,516	1,502,480	92,250	2,752,192	50 60	366,358	1,450,452	90,297,635	3.52
2/23/2013	71,203,934	1496 (\$1, N); 1399 (\$2, N); 1495 (\$5, N) - 2/18/13; 1450 (\$2, N) - 2/22/13	2,716,839	16 4	5,343,246	99,957	1,083,596	1,849,824	850 1,100	1,759,469	26 12	429,347	1,473,358	91,116	3,067,388	70 80	394,142	1,421,708	90,933,923	3.54
3/2/2013	74,551,567	1474 (\$2, N) - 2/25/13	2,667,146	5 6	5,664,284	109,000	1,111,025	954,451	200 225	1,801,090	13 19	443,330	1,627,457	108,647	3,852,426	90 103	475,464	1,464,008	94,829,894	3.69
3/9/2013	75,360,138	1427 (\$1, N); 1497 (\$2, N); 1498 (\$5, N) - 3/4/13	2,711,613	7 8	5,687,827	106,680	1,111,266	1,024,080	325 200	1,914,669	26 33	465,588	1,592,687	105,438	4,739,852	123 150	558,580	1,429,484	96,807,901	3.77
3/16/2013	70,065,528	0	2,704,692	9 10	5,296,558	99,894	1,069,350	982,380	225 325	1,796,816	41 12	443,221	1,497,910	96,023	6,065,856	183 216	682,736	1,320,128	92,121,091	3.59
weekly change	-7.0%		-0.3%		-6.9%	-6.4%	-3.8%	-4.1%		-6.2%		-4.8%	-6.0%	-8.9%	28.0%		22.2%	-7.7%		-4.8%
	<b>SALES</b>		<b>SALES</b>		<b>SALES</b>	<b>SALES</b>	<b>SALES</b>	<b>SALES</b>		<b>SALES</b>		<b>SALES</b>	<b>SALES</b>	<b>SALES</b>	<b>SALES</b>		<b>SALES</b>		<b>SALES</b>	<b>% of Sales</b>
Calendar Year to date	3,865,087,224		193,964,914		331,097,483	6,623,602	74,729,196	76,713,452		214,051,380		42,643,780	86,760,339	5,922,699	276,349,587		32,210,003	47,003,382	5,253,157,039	100.0%
Fiscal Year to date 2013	1,731,684,412		83,219,077		145,614,875	2,734,668	30,661,077	32,233,630		55,926,938		13,134,432	39,119,655	2,567,872	145,886,495		15,211,904	47,003,382	2,344,998,416	100.0%