



WEEKLY SALES SUMMARY

Unaudited

Week Ending: 03/21/2009

Texas Lottery Commission
Fiscal Year to Date Sales Comparison
Unaudited

Through the week ending 03/21/2009 (29 weeks)

Sales by Game	FY 2007 *	FY 2008 **	FY 2009	\$ Change		% Change	
				FY 2009 to FY 2007	FY 2009 to FY 2008	FY 2009 to FY 2007	FY 2009 to FY 2008
Instant	\$ 1,595,009,254	\$ 1,584,033,269	\$ 1,547,265,083	\$ -47,744,171	\$ -36,768,186	-3.0%	-2.3%
Lotto Texas	135,618,360	118,481,005	107,065,474	-28,552,886	-11,415,531	-21.1%	-9.6%
Pick 3	176,117,817	161,277,378	159,968,045	-16,149,772	-1,309,333	-9.2%	-0.8%
Pick 3 Sum It Up	-	3,454,041	3,375,248	3,375,248	-78,793	-	-2.3%
Cash 5	49,439,005	43,150,795	39,908,066	-9,530,939	-3,242,729	-19.3%	-7.5%
Texas Two Step	29,475,655	24,558,682	29,058,690	-416,965	4,500,008	-1.4%	18.3%
Mega Millions	107,274,766	95,466,988	103,593,312	-3,681,455	8,126,324	-3.4%	8.5%
Megaplier	24,065,456	22,598,501	23,938,477	-126,979	1,339,976	-0.5%	5.9%
Daily 4	-	23,692,706	24,714,662	24,714,662	1,021,956	-	4.3%
Daily 4 Sum It Up	-	5,561,707	3,070,728	3,070,728	-2,490,979	-	-44.8%
Total	\$ 2,117,000,313	\$ 2,082,275,070	\$ 2,041,957,784	\$ -75,042,529	\$ -40,317,287	-3.5%	-1.9%

* 3 extra days in 2007 ** 2 extra days in 2008

Texas Lottery Commission
Fiscal Year Over Year Change in Sales
Unaudited
FY 2009 Compared to FY 2008

Week	FY 2009 Week Ending	INSTANT TICKETS				ON-LINE GAMES				TOTAL SALES			
		FY 2009	FY 2008	Difference	% change - Cumulative Sales	FY 2009	FY 2008	Difference	% change - Cumulative Sales	FY 2009	FY 2008	Difference	% change - Cumulative Sales
1	9/6/2008**	\$44,890,104	\$62,376,229	(\$17,486,125)	-28.0%	\$14,722,011	\$19,372,224	(\$4,650,213)	-24.0%	\$59,612,115	\$81,748,453	(\$22,136,338)	-27.1%
2	9/13/2008	\$46,309,551	\$52,458,866	(\$6,149,315)	-20.6%	\$13,704,860	\$16,926,163	(\$3,221,303)	-21.7%	\$60,014,411	\$69,385,029	(\$9,370,618)	-20.8%
3	9/20/2008	\$42,923,171	\$49,998,934	(\$7,075,763)	-18.6%	\$12,291,263	\$15,792,283	(\$3,501,020)	-21.8%	\$55,214,434	\$65,791,217	(\$10,576,783)	-19.4%
4	9/27/2008	\$47,042,801	\$49,894,175	(\$2,851,374)	-15.6%	\$14,222,339	\$14,800,514	(\$578,175)	-17.9%	\$61,265,140	\$64,694,689	(\$3,429,549)	-16.2%
5	10/4/2008	\$50,747,162	\$53,486,863	(\$2,739,701)	-13.5%	\$15,784,472	\$16,618,430	(\$833,958)	-15.3%	\$66,531,634	\$70,105,293	(\$3,573,659)	-14.0%
6	10/11/2008	\$49,763,789	\$50,918,020	(\$1,154,231)	-11.7%	\$15,622,498	\$15,601,410	\$21,088	-12.9%	\$65,386,287	\$66,519,430	(\$1,133,143)	-12.0%
7	10/18/2008	\$49,299,053	\$50,532,253	(\$1,233,200)	-10.5%	\$15,167,940	\$15,682,666	(\$514,726)	-11.6%	\$64,466,993	\$66,214,919	(\$1,747,926)	-10.7%
8	10/25/2008	\$49,977,581	\$50,347,450	(\$369,869)	-9.3%	\$14,525,843	\$15,586,516	(\$1,060,673)	-11.0%	\$64,503,424	\$65,933,966	(\$1,430,542)	-9.7%
9	11/1/2008	\$50,346,542	\$53,953,733	(\$3,607,191)	-9.0%	\$14,838,845	\$16,775,983	(\$1,937,139)	-11.1%	\$65,185,387	\$70,729,716	(\$5,544,330)	-9.5%
10	11/8/2008	\$54,860,087	\$53,635,090	\$1,224,997	-7.9%	\$16,057,069	\$15,912,791	\$144,278	-9.9%	\$70,917,156	\$69,547,881	\$1,369,275	-8.3%
11	11/15/2008	\$53,484,812	\$51,254,401	\$2,230,411	-6.8%	\$15,829,819	\$15,797,076	\$32,744	-9.0%	\$69,314,631	\$67,051,477	\$2,263,155	-7.3%
12	11/22/2008	\$52,806,511	\$50,897,817	\$1,908,694	-5.9%	\$16,460,748	\$15,801,720	\$659,028	-7.9%	\$69,267,259	\$66,699,537	\$2,567,722	-6.4%
13	11/29/2008	\$52,199,741	\$53,913,115	(\$1,713,374)	-5.7%	\$17,397,576	\$17,055,505	\$342,072	-7.1%	\$69,597,317	\$70,968,620	(\$1,371,303)	-6.0%
14	12/6/2008	\$56,731,851	\$55,702,697	\$1,029,154	-5.1%	\$20,363,789	\$17,900,717	\$2,463,073	-5.5%	\$77,095,640	\$73,603,414	\$3,492,227	-5.2%
15	12/13/2008	\$54,109,617	\$53,703,516	\$406,101	-4.7%	\$22,952,228	\$17,820,841	\$5,131,387	-3.0%	\$77,061,845	\$71,524,357	\$5,537,488	-4.3%
16	12/20/2008	\$55,777,328	\$57,592,769	(\$1,815,441)	-4.6%	\$15,833,517	\$17,436,233	(\$1,602,716)	-3.4%	\$71,610,845	\$75,029,002	(\$3,418,157)	-4.3%
17	12/27/2008	\$57,597,885	\$57,696,003	(\$98,118)	-4.3%	\$15,851,771	\$14,743,680	\$1,108,091	-2.9%	\$73,449,656	\$72,439,683	\$1,009,973	-4.0%
18	1/3/2009	\$57,582,115	\$57,935,952	(\$353,837)	-4.1%	\$16,900,028	\$15,704,450	\$1,195,578	-2.3%	\$74,482,143	\$73,640,402	\$841,741	-3.7%
19	1/10/2009	\$54,250,945	\$55,360,542	(\$1,109,597)	-4.0%	\$16,203,220	\$15,691,540	\$511,680	-2.0%	\$70,454,165	\$71,052,082	(\$597,917)	-3.5%
20	1/17/2009	\$51,625,339	\$54,920,166	(\$3,294,827)	-4.1%	\$15,701,605	\$16,259,669	(\$558,064)	-2.1%	\$67,326,944	\$71,179,835	(\$3,852,891)	-3.6%
21	1/24/2009	\$52,789,573	\$54,439,890	(\$1,650,317)	-4.1%	\$15,897,473	\$16,691,724	(\$794,251)	-2.2%	\$68,687,046	\$71,131,614	(\$2,444,568)	-3.6%
22	1/31/2009	\$55,453,471	\$57,464,382	(\$2,010,911)	-4.0%	\$16,908,272	\$17,968,227	(\$1,059,955)	-2.4%	\$72,361,743	\$75,432,609	(\$3,070,866)	-3.7%
23	2/7/2009	\$62,247,711	\$60,715,019	\$1,532,692	-3.7%	\$18,354,314	\$20,097,338	(\$1,743,025)	-2.7%	\$80,602,025	\$80,812,357	(\$210,333)	-3.5%
24	2/14/2009	\$60,509,056	\$57,093,143	\$3,415,913	-3.3%	\$19,218,078	\$22,179,908	(\$2,961,831)	-3.3%	\$79,727,134	\$79,273,051	\$454,083	-3.3%
25	2/21/2009	\$59,194,623	\$57,627,047	\$1,567,576	-3.0%	\$21,098,199	\$27,230,539	(\$6,132,340)	-4.5%	\$80,292,822	\$84,857,586	(\$4,564,764)	-3.4%
26	2/28/2009	\$58,857,216	\$55,591,667	\$3,265,549	-2.7%	\$24,116,924	\$17,016,118	\$7,100,806	-2.8%	\$82,974,140	\$72,607,785	\$10,366,355	-2.7%
27	3/7/2009	\$59,552,257	\$56,837,481	\$2,714,776	-2.4%	\$23,995,136	\$16,690,193	\$7,304,943	-1.1%	\$83,547,393	\$73,527,674	\$10,019,719	-2.1%
28	3/14/2009	\$53,754,084	\$54,587,112	(\$833,028)	-2.4%	\$18,769,831	\$16,448,165	\$2,321,667	-0.6%	\$72,523,915	\$71,035,277	\$1,488,639	-1.9%
29	3/21/2009	\$52,581,107	\$53,098,937	(\$517,830)	-2.3%	\$15,903,038	\$16,639,184	(\$736,146)	-0.7%	\$68,484,145	\$69,738,121	(\$1,253,976)	-1.9%
30	3/28/2009		\$53,933,689				\$17,698,625				\$71,632,314		
31	4/4/2009		\$57,598,982				\$17,665,411				\$75,264,393		
32	4/11/2009		\$53,954,185				\$15,860,784				\$69,814,969		
33	4/18/2009		\$53,946,736				\$16,452,676				\$70,399,412		
34	4/25/2009		\$51,533,006				\$16,873,949				\$68,406,955		
35	5/2/2009		\$53,250,568				\$18,202,103				\$71,452,671		
36	5/9/2009		\$54,060,849				\$18,422,562				\$72,483,411		
37	5/16/2009		\$54,010,641				\$20,728,360				\$74,739,001		
38	5/23/2009		\$50,377,032				\$15,461,384				\$65,838,416		
39	5/30/2009		\$49,545,080				\$15,175,370				\$64,720,450		
40	6/6/2009		\$53,702,986				\$15,982,166				\$69,685,152		

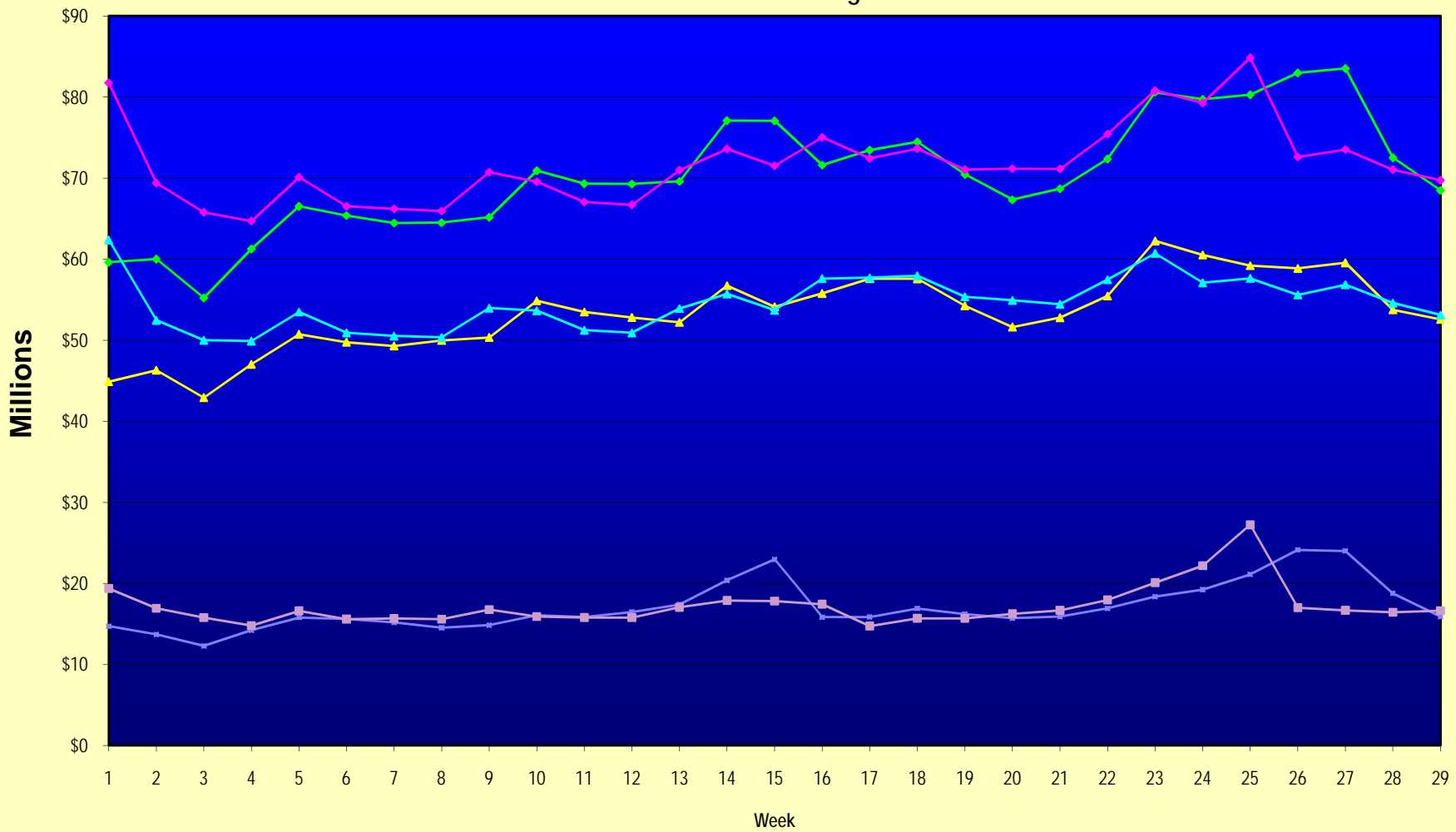
Note: Week 1 is not a full week of sales as this report is prepared on a Fiscal Year basis.

Texas Lottery Commission
Fiscal Year Over Year Change in Sales
Unaudited
FY 2009 Compared to FY 2008

Week	FY 2009 Week Ending	INSTANT TICKETS				ON-LINE GAMES				TOTAL SALES			
		FY 2009	FY 2008	Difference	% change - Cumulative Sales	FY 2009	FY 2008	Difference	% change - Cumulative Sales	FY 2009	FY 2008	Difference	% change - Cumulative Sales
41	6/13/2009		\$51,171,483				\$16,589,087				\$67,760,570		
42	6/20/2009		\$50,650,362				\$15,728,484				\$66,378,846		
43	6/27/2009		\$49,258,266				\$15,250,905				\$64,509,171		
44	7/4/2009		\$53,393,355				\$16,270,619				\$69,663,974		
45	7/11/2009		\$53,127,756				\$16,914,922				\$70,042,678		
46	7/18/2009		\$51,593,146				\$17,752,738				\$69,345,884		
47	7/25/2009		\$49,902,181				\$16,706,145				\$66,608,326		
48	8/1/2009		\$49,605,420				\$16,254,383				\$65,859,803		
49	8/8/2009		\$50,961,907				\$16,770,496				\$67,732,403		
50	8/15/2009		\$49,452,511				\$16,749,487				\$66,201,998		
51	8/22/2009		\$49,249,518				\$17,286,302				\$66,535,820		
52	8/29/2009		\$49,468,928				\$18,109,997				\$67,578,925		
53	9/5/2009		\$6,054,239				\$493,109				\$6,547,348		
Total thru Current Week		\$1,547,265,083	\$1,584,033,269	(\$36,768,186)	-2.3%	\$494,692,701	\$498,241,801	(\$3,549,101)	-0.7%	\$2,041,957,784	\$2,082,275,070	(\$40,317,287)	-1.9%
Fiscal Year Total		\$1,547,265,083	\$2,783,836,095			\$494,692,701	\$887,641,858			\$2,041,957,784	\$3,671,477,953		

** FY 2009 includes 6 days; FY 2008 includes 8 days
FY 2009 average daily sales are \$9,242,258. Two days at average daily sales are \$18,484,516.

Texas Lottery Commission Fiscal Year Over Year Change in Sales



Note: Week 1 is not a full week of sales as this report is prepared on a Fiscal Year basis.

Texas Lottery Commission
Instant Tickets by Price Point
Sales, Prize Expense, Sales Contribution and Payout Percentage With Year Over Year Changes
Unaudited

Fiscal Year	Price Point	# of Active Games	FY Sales	% of Instant Ticket Sales	Year over Year Change in Sales	FY Prize Expense	Year over Year Change in Prize Expense	FY Sales Contribution	Year over Year Change in Contribution	Average Prize Payout %	Year over Year Change in Payout %
2008	\$1.00	39	133,535,978	8.4%		80,265,691		53,270,287		60.1%	0.0%
thru	\$2.00	46	259,112,666	16.4%		168,641,374		90,471,292		65.1%	0.4%
3/22/2008	\$3.00	15	133,081,935	8.4%		87,499,693		45,582,242		65.7%	-0.1%
	\$5.00	41	443,832,500	28.0%		300,444,120		143,388,380		67.7%	-0.4%
	\$7.00	11	99,328,054	6.3%		67,550,160		31,777,894		68.0%	0.1%
	\$10.00	18	240,034,056	15.2%		166,752,253		73,281,803		69.5%	-1.4%
	\$20.00	7	98,407,820	6.2%		70,772,778		27,635,042		71.9%	-0.1%
	\$25.00	2	45,751,650	2.9%		33,218,544		12,533,106		72.6%	0.3%
	\$30.00	3	36,485,760	2.3%		26,408,790		10,076,970		72.4%	0.1%
	\$50.00	2	94,462,850	6.0%		68,152,375		26,310,475		72.1%	0.0%
Total		184	\$1,584,033,269			\$1,069,705,778		\$514,327,491		67.5%	0.0%
2009	\$1.00	39	136,317,797	8.8%		81,978,229		54,339,568		60.1%	0.1%
thru	\$2.00	36	268,362,531	17.3%		174,836,843		93,525,688		65.1%	-0.2%
3/21/2009	\$3.00	15	161,813,631	10.5%		106,341,575		55,472,056		65.7%	0.0%
	\$5.00	40	475,889,224	30.8%		323,649,165		152,240,059		68.0%	0.1%
	\$7.00	7	76,701,975	5.0%		52,162,076		24,539,899		68.0%	0.0%
	\$10.00	18	215,516,650	13.9%		150,800,529		64,716,121		70.0%	0.0%
	\$20.00	8	141,402,040	9.1%		101,463,972		39,938,068		71.8%	0.0%
	\$25.00	1	2,373,025	0.2%		1,726,035		646,990		72.7%	0.2%
	\$30.00	3	10,026,810	0.6%		7,265,796		2,761,014		72.5%	0.1%
	\$50.00	3	58,861,400	3.8%		42,544,736		16,316,664		72.3%	0.2%
Total		170	\$1,547,265,083			\$1,042,768,957		\$504,496,126		67.4%	-0.4%
Variance	\$1.00	0	2,781,819		2.1%	1,712,539	2.1%	1,069,280	2.0%	0.03%	
2009 to	\$2.00	-10	9,249,865		3.6%	6,195,469	3.7%	3,054,396	3.4%	0.07%	
2008	\$3.00	0	28,731,696		21.6%	18,841,882	21.5%	9,889,814	21.7%	-0.03%	
	\$5.00	-1	32,056,724		7.2%	23,205,045	7.7%	8,851,679	6.2%	0.32%	
	\$7.00	-4	-22,626,079		-22.8%	-15,388,085	-22.8%	-7,237,994	-22.8%	0.00%	
	\$10.00	0	-24,517,406		-10.2%	-15,951,725	-9.6%	-8,565,681	-11.7%	0.50%	
	\$20.00	1	42,994,220		43.7%	30,691,195	43.4%	12,303,025	44.5%	-0.16%	
	\$25.00	-1	-43,378,625		-94.8%	-31,492,509	-94.8%	-11,886,116	-94.8%	0.13%	
	\$30.00	0	-26,458,950		-72.5%	-19,142,994	-72.5%	-7,315,956	-72.6%	0.08%	
	\$50.00	1	-35,601,450		-37.7%	-25,607,639	-37.6%	-9,993,811	-38.0%	0.13%	
Total		-14	-\$36,768,186		-2.3%	-\$26,936,821	-2.5%	-\$9,831,365	-1.9%	-0.14%	

Texas Lottery Commission
Instant Tickets by Price Point
Sales, Prize Expense, Sales Contribution and Payout Percentage With Year Over Year Changes
Unaudited

Notes - Instant Ticket Variances

		FY 2009		FY 2008		Difference
Sales	\$1 - \$7	\$1,119,085,158		\$1,068,891,133		\$50,194,025
Prize Exp.	\$1 - \$7	\$738,967,888		\$704,401,038		\$34,566,851
Sales Cont.	\$1 - \$7	\$380,117,270		\$364,490,095		\$15,627,174
Prize Exp. %	\$1 - \$7	66.0%		65.9%		0.1%
		FY 2009		FY 2008		Difference
Sales	\$10 - \$50	\$428,179,925		\$515,142,136		-\$86,962,211
Prize Exp.	\$10 - \$50	\$303,801,068		\$365,304,740		-\$61,503,672
Sales Cont.	\$10 - \$50	\$124,378,857		\$149,837,396		-\$25,458,539
Prize Exp. %	\$10 - \$50	71.0%		70.9%		0.0%
		FY 2009		FY 2008		Difference
Sales	Instant	\$1,547,265,083		\$1,584,033,269		-\$36,768,186
Prize Exp.	Instant	\$1,042,768,957		\$1,069,705,778		-\$26,936,821
Sales Cont.	Instant	\$504,496,126		\$514,327,491		-\$9,831,365
Prize Exp. %	Instant	67.4%		67.5%		-0.1%

		FY 2009		FY 2008		Difference
Sales	\$1 - \$10	\$1,334,601,808		\$1,308,925,189		\$25,676,619
Prize Exp.	\$1 - \$10	\$889,768,417		\$871,153,291		\$18,615,126
Sales Cont.	\$1 - \$10	\$444,833,391		\$437,771,898		\$7,061,493
Prize Exp. %	\$1 - \$10	66.7%		66.6%		0.1%
		FY 2009		FY 2008		Difference
Sales	\$20 - \$50	\$212,663,275		\$275,108,080		-\$62,444,805
Prize Exp.	\$20 - \$50	\$153,000,540		\$198,552,487		-\$45,551,947
Sales Cont.	\$20 - \$50	\$59,662,735		\$76,555,593		-\$16,892,858
Prize Exp. %	\$20 - \$50	71.9%		72.2%		-0.2%
		FY 2009		FY 2008		Difference
Sales	Instant	\$1,547,265,083		\$1,584,033,269		-\$36,768,186
Prize Exp.	Instant	\$1,042,768,957		\$1,069,705,778		-\$26,936,821
Sales Cont.	Instant	\$504,496,126		\$514,327,491		-\$9,831,365
Prize Exp. %	Instant	67.4%		67.5%		-0.1%

Texas Lottery Commission
 Weekly Sales Summary
 & Comparison to Previous Week
 Unaudited

	Week Ending 03/21/2009		Week Ending 03/14/2009			
	<u>THIS WEEK</u>	% of Sales	<u>LAST WEEK</u>	% of Sales	<u>\$ change</u>	<u>% change</u>
Total Sales	<u>\$68,484,145</u>		<u>\$72,523,915</u>		<u>-\$4,039,770</u>	-5.57%
Instant Tickets	<u>\$52,581,107</u>	76.8%	<u>\$53,754,084</u>	74.1%	<u>-\$1,172,977</u>	-2.18%
Lotto Texas	\$3,437,818	5.0%	\$4,752,592	6.6%	-\$1,314,774	-27.66%
Pick 3	\$5,776,042	8.4%	\$5,850,166	8.1%	-\$74,125	-1.27%
Pick 3 Sum It Up	\$117,294	0.2%	\$120,685	0.2%	-\$3,391	-2.81%
Cash 5	\$1,399,720	2.0%	\$1,418,127	2.0%	-\$18,407	-1.30%
Texas Two Step	\$880,620	1.3%	\$2,112,571	2.9%	-\$1,231,951	-58.32%
Mega Millions	\$2,595,785	3.8%	\$2,782,204	3.8%	-\$186,419	-6.70%
Megaplier	\$653,517	1.0%	\$698,214	1.0%	-\$44,697	-6.40%
Daily 4	\$934,185	1.4%	\$925,615	1.3%	\$8,570	0.93%
Daily 4 Sum It Up	<u>\$108,058</u>	0.2%	<u>\$109,658</u>	0.2%	<u>-\$1,600</u>	-1.46%
Total Online Sales	<u>\$15,903,038</u>		<u>\$18,769,831</u>		<u>-\$2,866,793</u>	-15.27%

* Totals may not sum due to rounding.

Texas Lottery Commission
Weekly Sales Summary
Unaudited

INSTANT TICKETS
TOP TEN SELLING GAMES

For the Week Ending : 03/21/2009

Rank	Price Point	Game	Sales (Millions)
1	\$ 5	3 OF A KIND	\$ 3.232
2	\$ 10	STACKS OF CASH	\$ 3.159
3	\$ 3	BONUS CASHWORD	\$ 2.615
4	\$ 7	DAZZLIN' DIAMOND 7'S	\$ 2.358
5	\$ 5	BUST THE BANK	\$ 2.294
6	\$ 20	SUPER SET FOR LIFE	\$ 2.191
7	\$ 10	20 TIMES THE MONEY	\$ 2.142
8	\$ 5	POT O'GOLD	\$ 1.985
9	\$ 10	SET FOR LIFE	\$ 1.953
10	\$ 5	BONUS BREAK THE BANK	\$ 1.642

Texas Lottery Commission
Prize Payout Tracking Report
Unaudited

Through Week Ending 03/21/2009

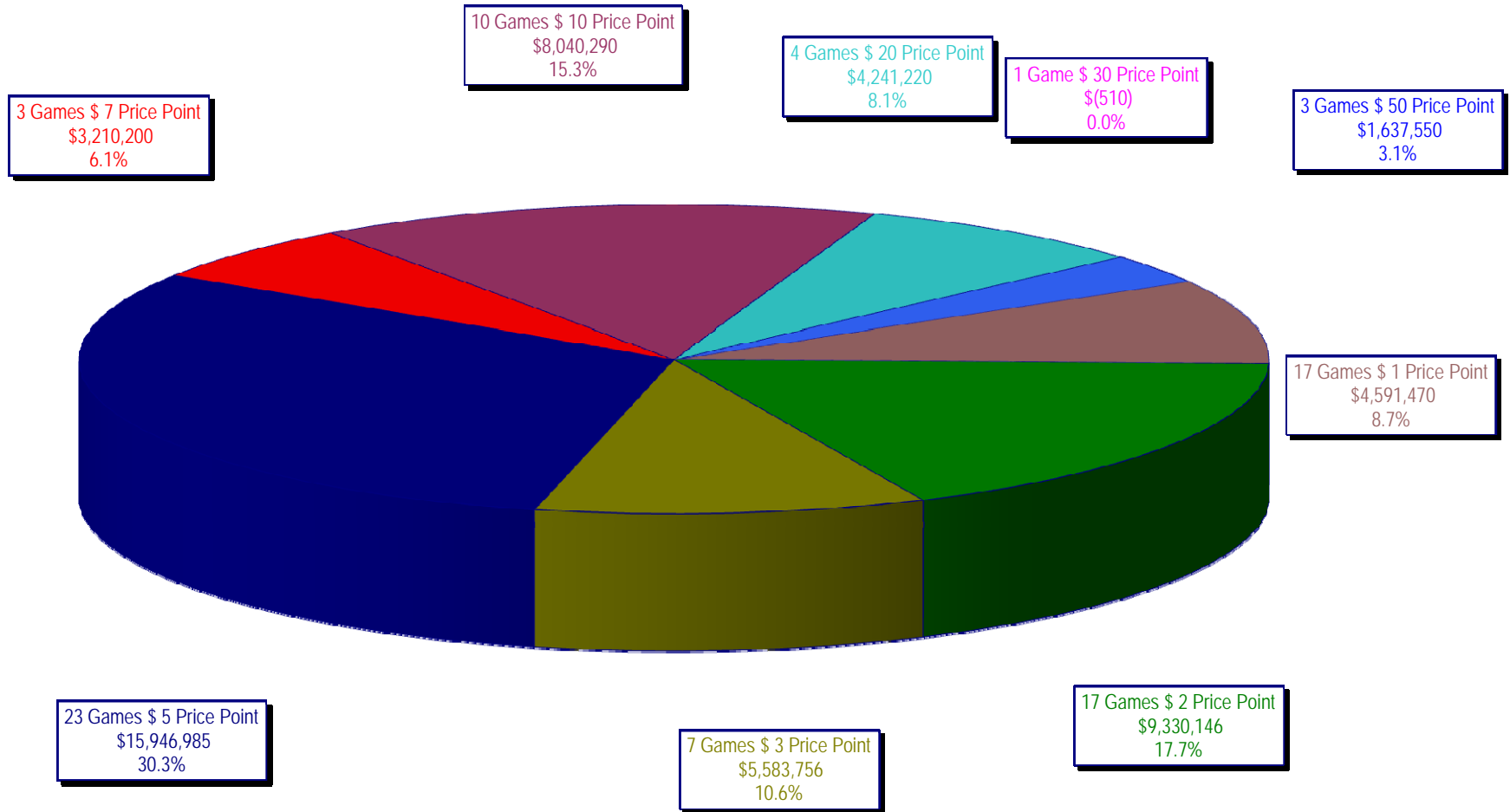
On-Line Sales

		FY Sales Through Week Ending 3/21/2009		FY Prize Expense Through Week Ending 3/21/2009	Actual* Prize Payout	Base Payout (Prize Pool)
Lotto	\$	107,065,474	\$	53,635,544	50.10%	50.00%
Pick 3		159,968,045		80,083,420	50.06%	50.00%
Pick 3 Sum It Up		3,375,248		1,527,451	45.25%	50.00%
Cash 5		39,908,066		20,056,858	50.26%	50.00%
Texas Two-Step		29,058,690		15,744,153	54.18%	50.00%
Mega Millions		103,593,312		51,084,822	49.31%	50.00%**
Megaplier		23,938,477		9,744,564	40.71%	N/A
Daily 4		24,714,662		11,619,550	47.01%	50.00%
Daily 4-Sum It Up		3,070,728		1,314,779	42.82%	50.00%
Totals	\$	494,692,701	\$	244,811,142	49.49%	

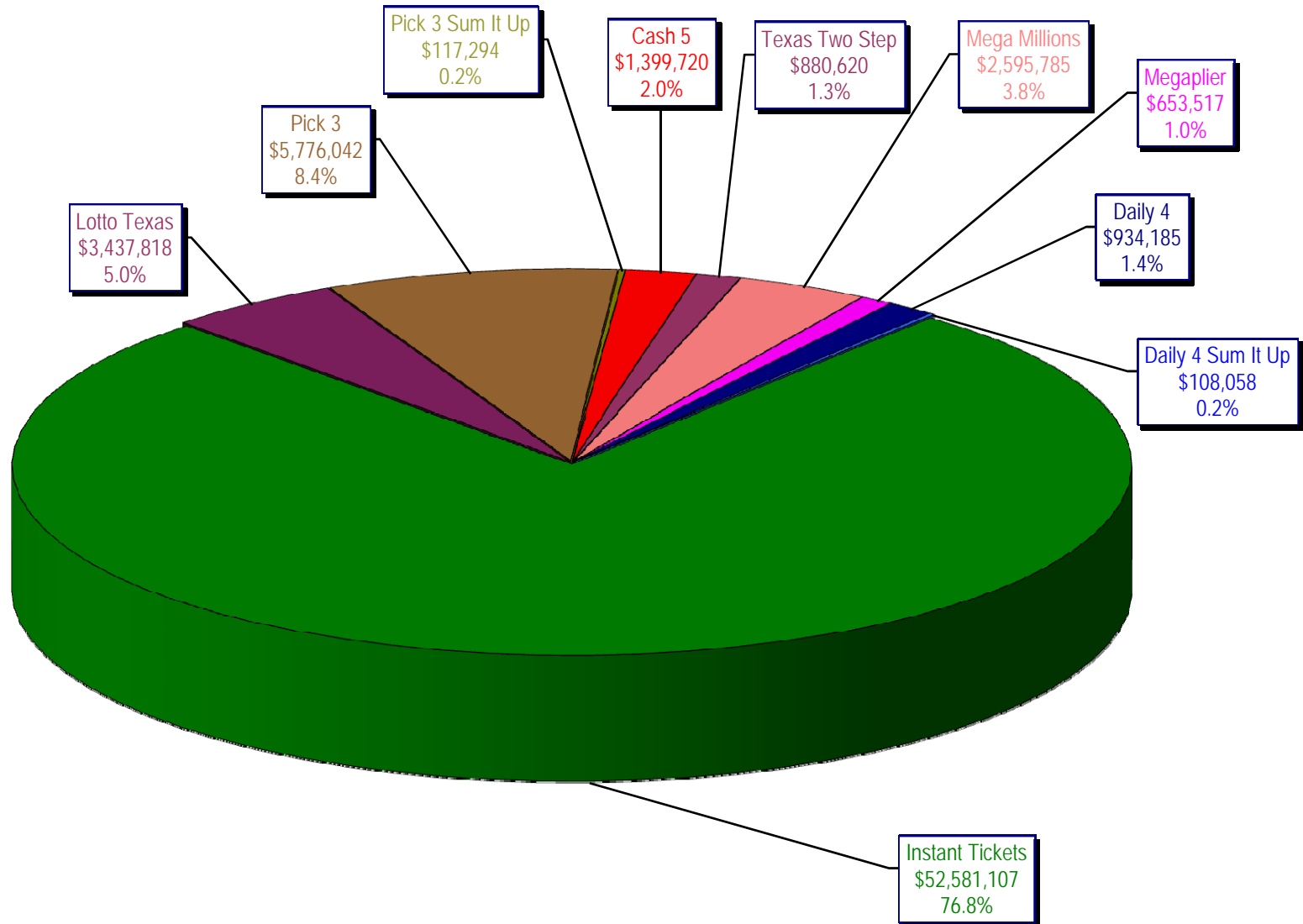
* Before Unclaimed Prizes

** Estimated; depends on # of guaranteed prizes won in Texas

Texas Lottery Commission
Instant Ticket Sales
For the Week Ending 03/21/2009
(Unaudited)



Texas Lottery Commission
All Game Sales
For the Week Ending 03/21/2009
(Unaudited)



Texas Lottery Commission - Weekly Sales Summary for FY 2009 (Unaudited)

Week Ended	Instant Games	New Games & Dates	Lotto Texas	Jackpot		Pick 3	Pick 3 Sum It Up	Cash 5	Texas Two Step	Jackpot		Mega Millions	Jackpot		Megaplier	Daily 4	Daily 4 Sum It Up	Total	Per Cap.
				W	S					M/T	TH/F		T	F					
9/6/2008	50,944,343.00	1108 (\$2,N), 1088 (\$3, N) - 9/01/08	3,378,718.00	5	6	5,436,414.00	122,123.00	1,396,622.00	890,346.00	350	450	2,445,490.00	12	16	649,090.00	786,482.50	109,834.00	66,159,462.50	2.77
9/13/2008	46,309,551.00	1109 (\$1,N), 1098 (\$5, N) - 9/08/08	3,020,089.00	7	8	4,705,585.50	105,899.00	1,279,412.00	856,199.00	600	200	2,327,214.00	24	12	617,672.00	696,633.00	96,156.50	60,014,411.00	2.51
9/20/2008	42,923,171.00	0	3,054,093.00	9	10	4,121,734.50	90,718.00	1,155,350.00	637,792.00	225	250	1,978,127.00	15	12	540,225.00	627,210.00	86,013.50	55,214,434.00	2.31
9/27/2008	47,042,801.00	1111 (\$2,N), 1099 (\$5, N) - 9/22/08	3,427,671.00	11	12	4,821,563.00	103,189.50	1,288,062.00	834,307.00	275	425	2,322,862.00	16	24	617,085.00	709,741.50	97,858.00	61,265,140.00	2.56
10/4/2008	50,747,162.00	1113 (\$1,N) 9/29/08	3,675,683.00	13	14	5,305,711.00	116,332.50	1,369,040.00	1,074,874.00	525	650	2,671,927.00	32	42	693,845.00	770,782.50	106,277.00	66,531,634.00	2.78
10/11/2008	49,763,789.00	0	3,732,365.00	15	16	5,287,094.00	114,665.50	1,370,334.00	1,305,250.00	800	975	2,306,070.00	12	16	622,120.00	778,204.00	106,395.00	65,386,286.50	2.74
10/18/2008	49,299,053.00	1117 (\$3,N), 1118 (\$20,N) - 10/13/08	3,780,438.00	17	18	5,149,258.00	109,530.00	1,355,601.00	741,849.00	200	200	2,500,644.00	23	32	652,198.00	776,366.00	102,056.00	64,466,993.00	2.70
10/25/2008	49,977,581.00	1119 (\$1,N), 1120 (\$5,N) - 10/20/08	3,210,762.00	4	5	5,099,671.00	107,104.50	1,339,079.00	789,649.00	225	275	2,456,965.00	42	12	641,206.00	778,434.00	102,972.50	64,503,424.00	2.70
11/1/2008	50,346,542.00	1121 (\$2,N), 1122 (\$10,N) - 10/27/08	3,325,641.00	6	7	5,234,124.00	109,983.00	1,339,046.00	946,035.00	375	475	2,347,596.00	16	23	626,235.00	805,572.00	104,612.50	65,185,386.50	2.73
11/8/2008	54,860,087.00	1123 (\$3,N), 1124 (\$7,N) - 11/03/08; 1103 (\$3,N) - 11/05/08; 1063 (\$3,N) - 11/07/08	3,290,417.00	4	5	5,686,701.00	118,495.00	1,397,985.00	1,158,101.00	625	750	2,729,302.50	31	42	692,662.00	871,230.00	112,175.50	70,917,156.00	2.97
11/15/2008	53,484,812.00	1125 (\$1, N), 1126 (\$5,N) - 11/10/08	3,336,934.00	6	7	5,459,984.00	112,884.00	1,366,024.00	766,955.00	200	225	3,102,251.00	51	62	749,736.00	830,957.00	104,094.00	69,314,631.00	2.90
11/22/2008	52,806,511.00	0	3,452,481.00	8	9	5,329,591.00	108,861.50	1,358,271.00	743,950.00	200	200	3,666,517.00	73	86	847,201.00	849,077.50	104,797.50	69,267,258.50	2.90
11/29/2008	52,199,741.00	1127 (\$2,N), 1128 (\$5,N) - 11/24/08	3,585,374.00	10	11	5,340,783.50	111,443.00	1,315,233.00	686,077.00	200	225	4,441,715.00	96	111	968,906.00	845,475.50	102,569.00	69,597,317.00	2.91
12/6/2008	56,731,851.00	0	3,794,991.00	12	13	5,752,593.00	121,663.50	1,416,446.00	780,328.00	250	200	6,238,355.00	128	146	1,270,214.00	881,841.50	107,357.00	77,095,640.00	3.23
12/13/2008	54,109,617.00	1129 (\$1, N) - 12/08/08	3,315,658.00	4	5	5,580,770.00	114,295.50	1,384,858.00	766,893.00	225	250	9,150,536.00	170	207	1,691,121.00	846,176.50	101,919.50	77,061,844.50	3.22
12/20/2008	55,777,328.00	1104 (\$2,N), 1105 (\$5,N), 1106 (\$10,N) - 12/15/08	3,432,340.00	6	7	5,741,120.00	116,075.50	1,401,805.00	741,945.00	200	200	2,736,234.00	12	16	687,875.00	871,579.50	104,543.00	71,610,845.00	3.00
12/27/2008	57,597,885.00	1077 (\$1,N), 1110 (\$1,N) - 12/22/08	3,582,169.00	8	4	5,628,081.50	115,323.00	1,340,590.00	708,906.00	225	250	2,842,167.00	22	29	706,042.00	828,346.00	100,146.00	73,449,655.50	3.07
1/3/2009	57,582,115.00	0	3,784,763.00	5	6	5,690,220.50	120,519.50	1,406,807.00	934,000.00	325	525	3,190,457.00	37	46	780,850.00	885,674.00	106,736.50	74,482,142.50	3.12
1/10/2009	54,250,945.00	1135 (\$2,N), 1136 (\$5,N) - 1/5/09	3,582,400.00	7	8	5,476,890.00	116,674.50	1,403,531.00	1,267,847.00	675	900	2,701,275.00	12	16	681,574.00	868,919.00	104,109.50	70,454,165.00	2.95
1/17/2009	51,625,339.00	1137 (\$1,N), 1138 (\$3,N) - 1/12/09	3,668,302.50	9	10	5,443,159.00	112,605.00	1,387,958.00	778,563.00	200	200	2,683,707.00	22	12	675,416.00	852,987.00	98,907.50	67,326,944.00	2.82
1/24/2009	52,789,573.00	1115 (\$2,N), 1116 (\$5,N) - 1/19/09	3,723,835.50	11	12	5,514,547.50	115,827.50	1,376,695.00	860,483.00	225	325	2,692,611.00	16	21	676,936.00	836,996.00	99,541.00	68,687,045.50	2.87
1/31/2009	55,453,471.00	1080 (\$1,N), 1024 (\$20,R) - 1/26/09; 1062 (\$5,N) - 1/28/09	3,837,299.00	13	14	5,700,714.50	121,794.50	1,403,756.00	1,070,879.00	450	600	3,002,883.00	30	40	731,253.00	925,937.50	113,755.50	72,361,743.00	3.03
2/7/2009	62,247,711.00	1035 (\$2,N), 1144 (\$5,N), 1058 (\$10, N) - 2/2/09	4,092,117.00	15	16	6,336,717.00	134,543.00	1,481,812.00	842,746.00	200	225	3,509,032.00	50	60	829,550.00	1,007,529.00	120,267.50	80,602,024.50	3.37
2/14/2009	60,509,056.00	1146 (\$7,N), 1089 (\$1,N) - 2/9/09	4,119,193.00	17	18	6,363,028.00	133,901.50	1,445,616.00	1,013,987.00	325	450	4,082,572.00	73	85	928,813.00	1,010,898.50	120,068.50	79,727,133.50	3.34
2/21/2009	59,194,623.00	1046 (\$2,N), 1140 (\$5,N) - 2/16/09	4,326,401.00	19	20	6,038,807.50	128,493.00	1,439,312.00	1,268,803.00	600	750	5,614,471.00	103	120	1,178,133.00	988,075.00	115,703.50	80,292,822.00	3.36
2/28/2009	58,857,216.00	1132 (\$10,N), 1149 (\$1,N) - 2/23/09	4,526,304.00	21	22	6,084,457.50	128,979.50	1,439,607.00	1,668,414.00	925	1,150	7,676,975.00	145	171	1,504,895.00	973,121.00	114,171.00	82,974,140.00	3.47

Texas Lottery Commission - Weekly Sales Summary for FY 2009 (Unaudited)

Week Ended	Instant Games	New Games & Dates	Lotto Texas	Jackpot		Pick 3	Pick 3 Sum It Up	Cash 5	Texas Two Step	Jackpot		Mega Millions	Jackpot		Megaplier	Daily 4	Daily 4 Sum It Up	Total	Per Cap.
				W	S					M/T	TH/F		T	F					
3/7/2009	59,552,257.00	0	4,928,440.00	23	25	6,133,789.00	128,599.00	1,487,185.00	1,984,358.00	1,350	1,600	6,898,457.00	212	12	1,349,427.00	971,644.50	113,236.00	83,547,392.50	3.50
3/14/2009	53,754,084.00	1139 (\$2.N), 1079 (\$5.N) - 3/09/09	4,752,592.00	26	28	5,850,166.00	120,684.50	1,418,127.00	2,112,571.00	1,900	2,150	2,782,204.00	16	26	698,214.00	925,615.00	109,657.50	72,523,915.00	3.03
3/21/2009	52,581,107.00	1107 (\$1.N), 1154 (\$3.N), 1057 (\$10.N) - 3/16/09; 1102 (\$2.N) - 3/19/09	3,437,818.00	4	5	5,776,041.50	117,294.00	1,399,720.00	880,620.00	200	225	2,595,785.00	12	16	653,517.00	934,185.00	108,057.50	68,484,145.00	2.87
weekly change	-2.18%		-27.66%			-1.27%	-2.81%	-1.30%	-58.32%			-6.70%			-6.40%	0.93%	-1.46%	-5.57%	
SALES																			
Startup to date	35,027,851,085.00		10,386,162,521.00			3,458,686,997.50	9,861,077.50	2,159,064,076.00	455,324,408.00			1,029,731,906.50			242,146,511.00	66,931,633.00	11,409,531.50	53,055,303,719.00	100.0%
Calendar Year to date	645,947,410.00		46,793,229.00			67,527,498.50	175,670.50	16,325,622.00	14,165,271.00			45,775,003.00			10,278,696.00	10,723,974.50	1,268,724.00	858,981,098.50	100.0%
Fiscal Year to date 2009	1,547,265,083.00		107,065,474.00			159,968,045.00	3,375,247.50	39,908,066.00	29,058,690.00			103,593,311.50			23,938,477.00	24,714,661.50	3,070,728.00	2,041,957,783.50	100.0%