



*WEEKLY SALES SUMMARY*

Unaudited

[Week Ending: 03/24/2012](#)

Texas Lottery Commission  
Fiscal Year to Date Sales Comparison  
Unaudited

Through the week ending 03/24/2012 (30 weeks)

Sales by Game	FY 2010 *	FY 2011 **	FY 2012	\$ Change		% Change	
				FY 2012 to FY 2010	FY 2012 to FY 2011 to	FY 2012 to FY 2010	FY 2012 to FY 2011
Instants	\$ 1,603,781,662	\$ 1,618,175,362	\$ 1,723,879,858	\$ 120,098,196	\$ 105,704,496	7.5%	6.5%
Lotto Texas	153,508,850	99,335,192	98,300,488	-55,208,362	-1,034,704	-36.0%	-1.0%
Pick 3	155,047,597	156,572,891	153,004,914	-2,042,683	-3,567,977	-1.3%	-2.3%
Pick 3 Sum It Up	3,119,880	3,151,784	3,149,550	29,670	-2,234	1.0%	-0.1%
Cash Five	38,468,665	36,904,732	37,149,585	-1,319,080	244,854	-3.4%	0.7%
Texas Two Step	25,459,846	26,851,758	38,117,524	12,657,678	11,265,766	49.7%	42.0%
Mega Millions	103,862,991	119,191,456	96,707,416	-7,155,575	-22,484,040	-6.9%	-18.9%
Megaplier	23,275,726	23,927,507	20,737,621	-2,538,105	-3,189,886	-10.9%	-13.3%
Daily 4	30,014,814	32,613,063	36,251,154	6,236,340	3,638,092	20.8%	11.2%
Daily 4 Sum It Up	2,812,541	2,540,399	2,666,422	-146,119	126,023	-5.2%	5.0%
Powerball	13,589,631	49,987,075	88,680,941	75,091,310	38,693,866	-	77.4%
Power Play	3,250,729	11,943,453	16,055,578	12,804,849	4,112,125	-	34.4%
<b>Total</b>	<b>\$ 2,156,192,931</b>	<b>\$ 2,181,194,670</b>	<b>\$ 2,314,701,049</b>	<b>\$ 158,508,118</b>	<b>\$ 133,506,380</b>	<b>7.4%</b>	<b>6.1%</b>

\* 2 extra days

\*\* 1 extra day

Texas Lottery Commission  
Fiscal Year to Date Cumulative Average Sales Comparison  
Unaudited

Through the week ending 03/24/2012 (30 weeks)

Sales by Game	FY 2010	FY 2011	FY 2012
Instants	\$ 7,710,489	\$ 7,817,272	\$ 8,368,349
Lotto Texas	738,023	479,880	477,187
Pick 3	745,421	756,391	742,742
Pick 3 Sum It Up	14,999	15,226	15,289
Cash Five	184,946	178,284	180,338
Texas Two Step	122,403	129,719	185,037
Mega Millions	499,341	575,804	469,453
Megaplier	111,903	115,592	100,668
Daily 4	144,302	157,551	175,976
Daily 4 Sum It Up	13,522	12,272	12,944
Powerball	242,672 *	241,483	430,490
Power Play	58,049 *	57,698	77,940
<b>Total</b>	<b>\$ 10,586,070</b>	<b>\$ 10,537,172</b>	<b>\$ 11,236,413</b>

thru 03/27/2010

208 days

thru 03/26/2011

207 days

thru 03/24/2012

206 days

\* 56 days

Texas Lottery Commission  
Fiscal Year Over Year Change in Sales  
Unaudited  
FY 2012 Compared to FY 2011

Week	FY 2012 Week Ending	INSTANT TICKETS				ON-LINE GAMES				TOTAL SALES			
		FY 2012	FY 2011	Difference	% change - Cumulative Sales	FY 2012	FY 2011	Difference	% change - Cumulative Sales	FY 2012	FY 2011	Difference	% change - Cumulative Sales
1	9/3/2011**	\$25,147,181	\$31,659,033	(\$6,511,852)	-20.6%	\$9,704,561	\$11,430,717	(\$1,726,156)	-15.1%	\$34,851,742	\$43,089,750	(\$8,238,008)	-19.1%
2	9/10/2011	\$50,591,068	\$48,912,598	\$1,678,470	3.4%	\$17,681,853	\$16,398,160	\$1,283,693	7.8%	\$68,272,921	\$65,310,758	\$2,962,163	4.5%
3	9/17/2011	\$49,835,063	\$48,988,241	\$846,822	1.7%	\$16,842,326	\$17,166,827	(\$324,501)	-1.9%	\$66,677,389	\$66,155,068	\$522,321	0.8%
4	9/24/2011	\$49,777,138	\$48,471,310	\$1,305,828	2.7%	\$17,504,800	\$15,623,813	\$1,880,987	12.0%	\$67,281,938	\$64,095,123	\$3,186,815	5.0%
5	10/1/2011	\$51,040,274	\$50,145,138	\$895,136	1.8%	\$18,653,100	\$16,453,939	\$2,199,161	13.4%	\$69,693,374	\$66,599,077	\$3,094,297	4.6%
6	10/8/2011	\$53,715,157	\$50,918,591	\$2,796,566	5.5%	\$17,225,680	\$16,974,963	\$250,717	1.5%	\$70,940,837	\$67,893,554	\$3,047,283	4.5%
7	10/15/2011	\$51,942,121	\$49,096,011	\$2,846,110	5.8%	\$17,854,980	\$16,661,904	\$1,193,077	7.2%	\$69,797,101	\$65,757,915	\$4,039,187	6.1%
8	10/22/2011	\$52,837,769	\$50,158,946	\$2,678,823	5.3%	\$19,558,519	\$17,374,460	\$2,184,060	12.6%	\$72,396,288	\$67,533,406	\$4,862,883	7.2%
9	10/29/2011	\$52,206,644	\$49,775,287	\$2,431,357	4.9%	\$21,504,565	\$18,402,209	\$3,102,356	16.9%	\$73,711,209	\$68,177,496	\$5,533,713	8.1%
10	11/5/2011	\$56,265,310	\$53,337,848	\$2,927,462	5.5%	\$20,870,086	\$17,321,908	\$3,548,179	20.5%	\$77,135,396	\$70,659,756	\$6,475,641	9.2%
11	11/12/2011	\$55,682,645	\$52,285,479	\$3,397,166	6.5%	\$17,862,404	\$16,388,690	\$1,473,714	9.0%	\$73,545,049	\$68,674,169	\$4,870,880	7.1%
12	11/19/2011	\$54,978,079	\$52,424,036	\$2,554,043	4.9%	\$17,879,985	\$16,138,022	\$1,741,963	10.8%	\$72,858,064	\$68,562,058	\$4,296,006	6.3%
13	11/26/2011	\$53,942,448	\$51,262,518	\$2,679,930	5.2%	\$16,877,145	\$15,967,075	\$910,070	5.7%	\$70,819,593	\$67,229,593	\$3,590,000	5.3%
14	12/3/2011	\$57,153,469	\$56,385,259	\$768,210	1.4%	\$18,298,636	\$17,553,175	\$745,461	4.2%	\$75,452,105	\$73,938,434	\$1,513,671	2.0%
15	12/10/2011	\$55,318,284	\$56,540,048	(\$1,221,764)	-2.2%	\$19,033,326	\$17,703,352	\$1,329,975	7.5%	\$74,351,610	\$74,243,400	\$108,211	0.1%
16	12/17/2011	\$58,612,629	\$57,699,991	\$912,638	1.6%	\$20,045,279	\$18,465,282	\$1,579,997	8.6%	\$78,657,908	\$76,165,273	\$2,492,635	3.3%
17	12/24/2011	\$60,628,256	\$59,800,480	\$827,776	1.4%	\$22,572,986	\$19,635,771	\$2,937,215	15.0%	\$83,201,242	\$79,436,251	\$3,764,991	4.7%
18	12/31/2011	\$63,065,007	\$61,423,121	\$1,641,886	2.7%	\$19,948,521	\$26,122,257	(\$6,173,736)	-23.6%	\$83,013,528	\$87,545,378	(\$4,531,850)	-5.2%
19	1/7/2012	\$60,479,896	\$60,976,653	(\$496,757)	-0.8%	\$17,331,888	\$33,521,570	(\$16,189,682)	-48.3%	\$77,811,784	\$94,498,223	(\$16,686,439)	-17.7%
20	1/14/2012	\$57,689,526	\$50,099,433	\$7,590,093	15.2%	\$17,568,732	\$17,114,637	\$454,096	2.7%	\$75,258,258	\$67,214,070	\$8,044,189	12.0%
21	1/21/2012	\$58,704,854	\$53,143,646	\$5,561,208	10.5%	\$19,886,540	\$18,091,208	\$1,795,332	9.9%	\$78,591,394	\$71,234,854	\$7,356,540	10.3%
22	1/28/2012	\$57,611,325	\$54,096,128	\$3,515,197	6.5%	\$20,641,697	\$17,446,156	\$3,195,542	18.3%	\$78,253,022	\$71,542,284	\$6,710,739	9.4%
23	2/4/2012	\$65,553,366	\$53,433,592	\$12,119,774	22.7%	\$23,689,855	\$17,388,581	\$6,301,274	36.2%	\$89,243,221	\$70,822,173	\$18,421,048	26.0%
24	2/11/2012	\$75,070,485	\$60,277,094	\$14,793,391	24.5%	\$28,361,583	\$18,233,038	\$10,128,545	55.6%	\$103,432,068	\$78,510,132	\$24,921,936	31.7%
25	2/18/2012	\$66,679,947	\$61,536,763	\$5,143,184	8.4%	\$19,588,615	\$19,387,518	\$201,097	1.0%	\$86,268,562	\$80,924,281	\$5,344,281	6.6%
26	2/25/2012	\$64,868,899	\$59,046,203	\$5,822,696	9.9%	\$19,965,388	\$20,054,404	(\$89,016)	-0.4%	\$84,834,287	\$79,100,607	\$5,733,680	7.2%
27	3/3/2012	\$67,135,065	\$60,537,060	\$6,598,005	10.9%	\$20,947,181	\$19,478,807	\$1,468,374	7.5%	\$88,082,246	\$80,015,867	\$8,066,379	10.1%
28	3/10/2012	\$68,299,006	\$59,997,361	\$8,301,645	13.8%	\$22,152,639	\$19,601,658	\$2,550,982	13.0%	\$90,451,645	\$79,599,019	\$10,852,627	13.6%
29	3/17/2012	\$65,013,692	\$57,835,554	\$7,178,138	12.4%	\$23,351,718	\$21,189,563	\$2,162,155	10.2%	\$88,365,410	\$79,025,117	\$9,340,293	11.8%
30	3/24/2012	\$64,035,255	\$57,911,940	\$6,123,315	10.6%	\$27,416,609	\$29,729,651	(\$2,313,043)	-7.8%	\$91,451,864	\$87,641,591	\$3,810,273	4.3%
31	3/31/2012		\$60,407,139				\$19,519,264				\$79,926,403		
32	4/7/2012		\$60,704,285				\$19,455,317				\$80,159,602		
33	4/14/2012		\$57,663,398				\$17,866,867				\$75,530,265		
34	4/21/2012		\$56,740,216				\$17,429,326				\$74,169,542		
35	4/28/2012		\$58,042,011				\$17,104,548				\$75,146,559		
36	5/5/2012		\$66,509,159				\$17,744,833				\$84,253,992		
37	5/12/2012		\$53,769,716				\$17,783,942				\$71,553,658		
38	5/19/2012		\$53,704,228				\$18,623,882				\$72,328,110		
39	5/26/2012		\$52,310,134				\$19,115,921				\$71,426,055		
40	6/2/2012		\$53,256,725				\$18,462,603				\$71,719,328		
41	6/9/2012		\$54,293,614				\$17,213,019				\$71,506,633		
42	6/16/2012		\$52,688,230				\$17,534,413				\$70,222,643		

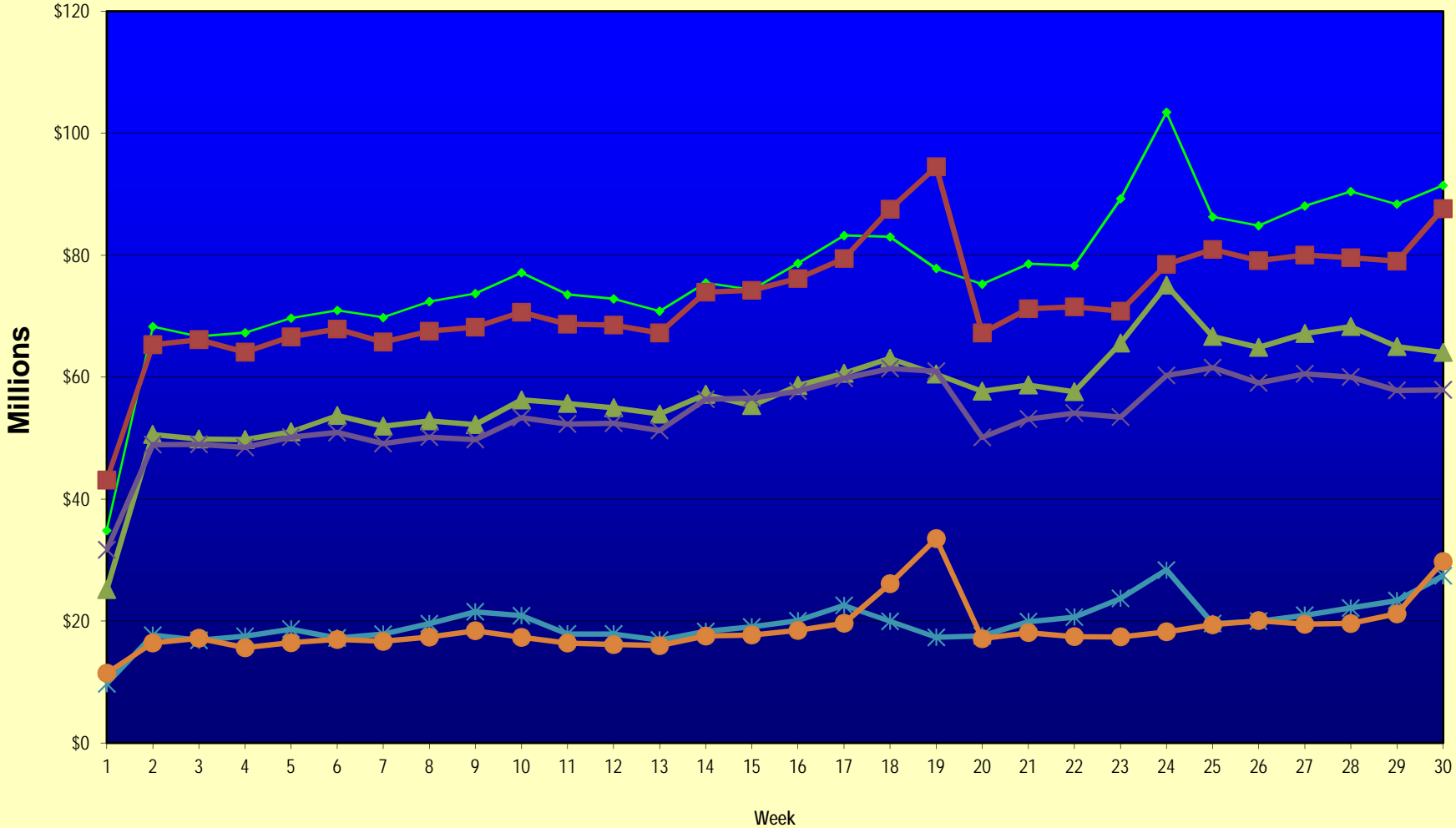
Note: Week 1 is not a full week of sales as this report is prepared on a Fiscal Year basis.

Texas Lottery Commission  
Fiscal Year Over Year Change in Sales  
Unaudited  
FY 2012 Compared to FY 2011

Week	FY 2012 Week Ending	INSTANT TICKETS				ON-LINE GAMES				TOTAL SALES			
		FY 2012	FY 2011	Difference	% change - Cumulative Sales	FY 2012	FY 2011	Difference	% change - Cumulative Sales	FY 2012	FY 2011	Difference	% change - Cumulative Sales
43	6/23/2012		\$53,174,595				\$17,086,937				\$70,261,532		
44	6/30/2012		\$53,687,509				\$18,406,785				\$72,094,294		
45	7/7/2012		\$53,054,685				\$16,211,989				\$69,266,674		
46	7/14/2012		\$51,161,290				\$16,945,733				\$68,107,023		
47	7/21/2012		\$50,807,750				\$17,362,213				\$68,169,963		
48	7/28/2012		\$51,277,179				\$18,870,764				\$70,147,943		
49	8/4/2012		\$53,320,489				\$20,922,034				\$74,242,523		
50	8/11/2012		\$50,914,022				\$19,467,124				\$70,381,146		
51	8/18/2012		\$49,905,898				\$17,419,045				\$67,324,943		
52	8/25/2012		\$49,424,242				\$16,837,474				\$66,261,716		
	8/31/2012		\$27,274,804				\$8,600,118				\$35,874,922		
Total thru Current Week		\$1,723,879,858	\$1,618,175,362	\$105,704,496	6.5%	\$590,821,191	\$563,019,308	\$27,801,884	4.9%	\$2,314,701,049	\$2,181,194,670	\$133,506,380	6.1%
Fiscal Year Total		\$1,723,879,858	\$2,842,266,680			\$590,821,191	\$969,003,455			\$2,314,701,049	\$3,811,270,135		

\*\* FY 2011 includes 4 days; FY 2012 includes 3 days

### Texas Lottery Commission Fiscal Year Over Year Change in Sales



◆ Total Sales 2012    
 ■ Total Sales 2011    
 ▲ Instant Tickets 2012    
 ✕ Instant Tickets 2011    
 ✧ On-Line Games 2012    
 ● On-Line Games 2011

Note: Week 1 is not a full week of sales as this report is prepared on a Fiscal Year basis.

Texas Lottery Commission  
Instant Tickets by Price Point  
Sales, Prize Expense, Sales Contribution and Payout Percentage With Year Over Year Changes  
Unaudited

Fiscal Year	Price Point	# of Active Games	FY Sales	% of Instant Ticket Sales	Year over Year Change in Sales	FY Prize Expense	Year over Year Change in Prize Expense	FY Sales Contribution	Year over Year Change in Contribution	Average Prize Payout %	Year over Year Change in Payout %
2011	\$1.00	31	121,581,363	7.5%		74,404,370		47,176,993		61.2%	1.8%
thru	\$2.00	31	227,610,564	14.1%		149,019,892		78,590,672		65.5%	0.5%
3/26/2011	\$3.00	18	197,631,747	12.2%		129,636,082		67,995,665		65.6%	0.0%
	\$5.00	41	507,110,620	31.3%		344,638,360		162,472,260		68.0%	-0.1%
	\$7.00	7	68,377,428	4.2%		46,486,416		21,891,012		68.0%	0.0%
	\$10.00	15	234,008,020	14.5%		165,988,560		68,019,460		70.9%	1.4%
	\$20.00	6	207,287,120	12.8%		153,926,941		53,360,179		74.3%	1.5%
	\$50.00	2	54,568,500	3.4%		42,374,061		12,194,439		77.7%	4.2%
<b>Total</b>		<b>151</b>	<b>\$1,618,175,362</b>			<b>\$1,106,474,682</b>		<b>\$511,700,680</b>		<b>68.4%</b>	<b>0.9%</b>
2012	\$1.00	31	127,184,948	7.4%		77,593,123		49,591,825		61.0%	0.4%
thru	\$2.00	32	233,246,582	13.5%		151,657,879		81,588,703		65.0%	-0.8%
3/24/2012	\$3.00	16	209,639,859	12.2%		137,446,218		72,193,641		65.6%	0.0%
	\$5.00	41	554,123,150	32.1%		376,958,339		177,164,811		68.0%	0.1%
	\$7.00	4	18,187,169	1.1%		12,367,158		5,820,011		68.0%	0.0%
	\$10.00	17	280,901,390	16.3%		198,224,481		82,676,909		70.6%	-0.6%
	\$20.00	6	229,133,360	13.3%		171,063,607		58,069,753		74.7%	0.0%
	\$50.00	2	71,463,400	4.1%		55,495,922		15,967,478		77.7%	0.0%
<b>Total</b>		<b>149</b>	<b>\$1,723,879,858</b>			<b>\$1,180,806,726</b>		<b>\$543,073,132</b>		<b>68.5%</b>	<b>0.0%</b>
Variance	\$1.00	0	5,603,585		4.6%	3,188,752	4.3%	2,414,833	5.1%	-0.19%	
2012 to	\$2.00	1	5,636,018		2.5%	2,637,987	1.8%	2,998,031	3.8%	-0.45%	
2011	\$3.00	-2	12,008,112		6.1%	7,810,136	6.0%	4,197,976	6.2%	-0.03%	
	\$5.00	0	47,012,530		9.3%	32,319,979	9.4%	14,692,551	9.0%	0.07%	
	\$7.00	-3	-50,190,259		-73.4%	-34,119,258	-73.4%	-16,071,001	-73.4%	0.01%	
	\$10.00	2	46,893,370		20.0%	32,235,921	19.4%	14,657,449	21.5%	-0.37%	
	\$20.00	0	21,846,240		10.5%	17,136,666	11.1%	4,709,574	8.8%	0.40%	
	\$50.00	0	16,894,900		31.0%	13,121,861	31.0%	3,773,039	30.9%	0.00%	
<b>Total</b>		<b>-2</b>	<b>\$105,704,496</b>		<b>6.5%</b>	<b>\$74,332,044</b>	<b>6.7%</b>	<b>\$31,372,452</b>	<b>6.1%</b>	<b>0.12%</b>	

Notes - Instant Ticket Variances

Texas Lottery Commission  
**Instant Tickets by Price Point**  
**Sales, Prize Expense, Sales Contribution and Payout Percentage With Year Over Year Changes**  
 Unaudited

			FY 2012		FY 2011	Difference
Sales	\$1 - \$7		\$1,142,381,708		\$1,122,311,722	\$20,069,986
Prize Exp.	\$1 - \$7		\$756,022,717		\$744,185,121	\$11,837,596
Sales Cont.	\$1 - \$7		\$386,358,991		\$378,126,601	\$8,232,390
Prize Exp. %	\$1 - \$7		66.2%		66.3%	-0.1%
			FY 2012		FY 2011	Difference
Sales	\$10 - \$50		\$581,498,150		\$495,863,640	\$85,634,510
Prize Exp.	\$10 - \$50		\$424,784,009		\$362,289,562	\$62,494,448
Sales Cont.	\$10 - \$50		\$156,714,141		\$133,574,078	\$23,140,062
Prize Exp. %	\$10 - \$50		73.0%		73.1%	0.0%
			FY 2012		FY 2011	Difference
Sales	Instant		\$1,723,879,858		\$1,618,175,362	\$105,704,496
Prize Exp.	Instant		\$1,180,806,726		\$1,106,474,682	\$74,332,044
Sales Cont.	Instant		\$543,073,132		\$511,700,680	\$31,372,452
Prize Exp. %	Instant		68.5%		68.4%	0.1%

			FY 2012		FY 2011	Difference
Sales	\$1 - \$10		\$1,423,283,098		\$1,356,319,742	\$66,963,356
Prize Exp.	\$1 - \$10		\$954,247,198		\$910,173,681	\$44,073,517
Sales Cont.	\$1 - \$10		\$469,035,900		\$446,146,061	\$22,889,839
Prize Exp. %	\$1 - \$10		67.0%		67.1%	-0.1%
			FY 2012		FY 2011	Difference
Sales	\$20 - \$50		\$300,596,760		\$261,855,620	\$38,741,140
Prize Exp.	\$20 - \$50		\$226,559,528		\$196,301,002	\$30,258,527
Sales Cont.	\$20 - \$50		\$74,037,232		\$65,554,618	\$8,482,613
Prize Exp. %	\$20 - \$50		75.4%		75.0%	0.4%
			FY 2012		FY 2011	Difference
Sales	Instant		\$1,723,879,858		\$1,618,175,362	\$105,704,496
Prize Exp.	Instant		\$1,180,806,726		\$1,106,474,682	\$74,332,044
Sales Cont.	Instant		\$543,073,132		\$511,700,680	\$31,372,452
Prize Exp. %	Instant		68.5%		68.4%	0.1%



Texas Lottery Commission  
**Weekly Sales Summary**  
**& Comparison to Previous Week**  
 Unaudited

	Week Ending 03/24/2012	% of Sales	Week Ending 03/17/2012	% of Sales	\$ change	% change
	<u>THIS WEEK</u>		<u>LAST WEEK</u>			
Total Sales	<u>\$91,451,864</u>		<u>\$88,365,410</u>		<u>\$3,086,454</u>	3.49%
Instant Tickets	<u>\$64,035,255</u>	70.0%	<u>\$65,013,692</u>	73.6%	<u>-\$978,437</u>	-1.50%
Lotto	\$3,279,433	3.6%	\$3,238,467	3.7%	\$40,966	1.26%
Pick 3	\$5,362,981	5.9%	\$5,355,241	6.1%	\$7,740	0.14%
Pick 3 Sum It Up	\$113,111	0.1%	\$111,158	0.1%	\$1,953	1.76%
Cash Five	\$1,289,990	1.4%	\$1,304,908	1.5%	-\$14,918	-1.14%
Texas Two Step	\$2,213,714	2.4%	\$2,011,205	2.3%	\$202,509	10.07%
Mega Millions	\$9,201,212	10.1%	\$5,753,985	6.5%	\$3,447,227	59.91%
Megaplier	\$1,604,019	1.8%	\$1,113,018	1.3%	\$491,001	44.11%
Daily 4	\$1,265,996	1.4%	\$1,281,976	1.5%	-\$15,980	-1.25%
Daily 4 Sum It Up	\$91,545	0.1%	\$92,281	0.1%	-\$736	-0.80%
Powerball	\$2,634,408	2.9%	\$2,718,408	3.1%	-\$84,000	-3.09%
Power Play	\$360,200	0.4%	\$371,071	0.4%	-\$10,871	-2.93%
Total Online Sales	<u>\$27,416,609</u>		<u>\$23,351,718</u>		<u>\$4,064,891</u>	17.41%

\* Totals may not sum due to rounding.

Texas Lottery Commission  
Weekly Sales Summary  
Unaudited

INSTANT TICKETS  
TOP TEN SELLING GAMES

For the Week Ending : 03/24/2012

Rank	Price Point	Game	Sales (Millions)
1	\$ 10	\$200 MILLION CASH SPECTACULAR	\$ 4.418
2	\$ 5	EMERALD 7'S	\$ 3.839
3	\$ 5	CASH FARMER	\$ 3.296
4	\$ 20	MAXIMUM MILLIONS	\$ 2.989
5	\$ 20	\$500 MILLION FRENZY	\$ 2.596
6	\$ 50	CASINO ACTION	\$ 2.435
7	\$ 5	MONTHLY BONUS	\$ 2.382
8	\$ 3	LOTERIA TEXAS	\$ 2.251
9	\$ 3	BONUS CASHWORD	\$ 2.145
10	\$ 5	\$100,000 RICHES	\$ 2.091

Texas Lottery Commission  
Prize Payout Tracking Report  
Unaudited

Through Week Ending 03/24/2012

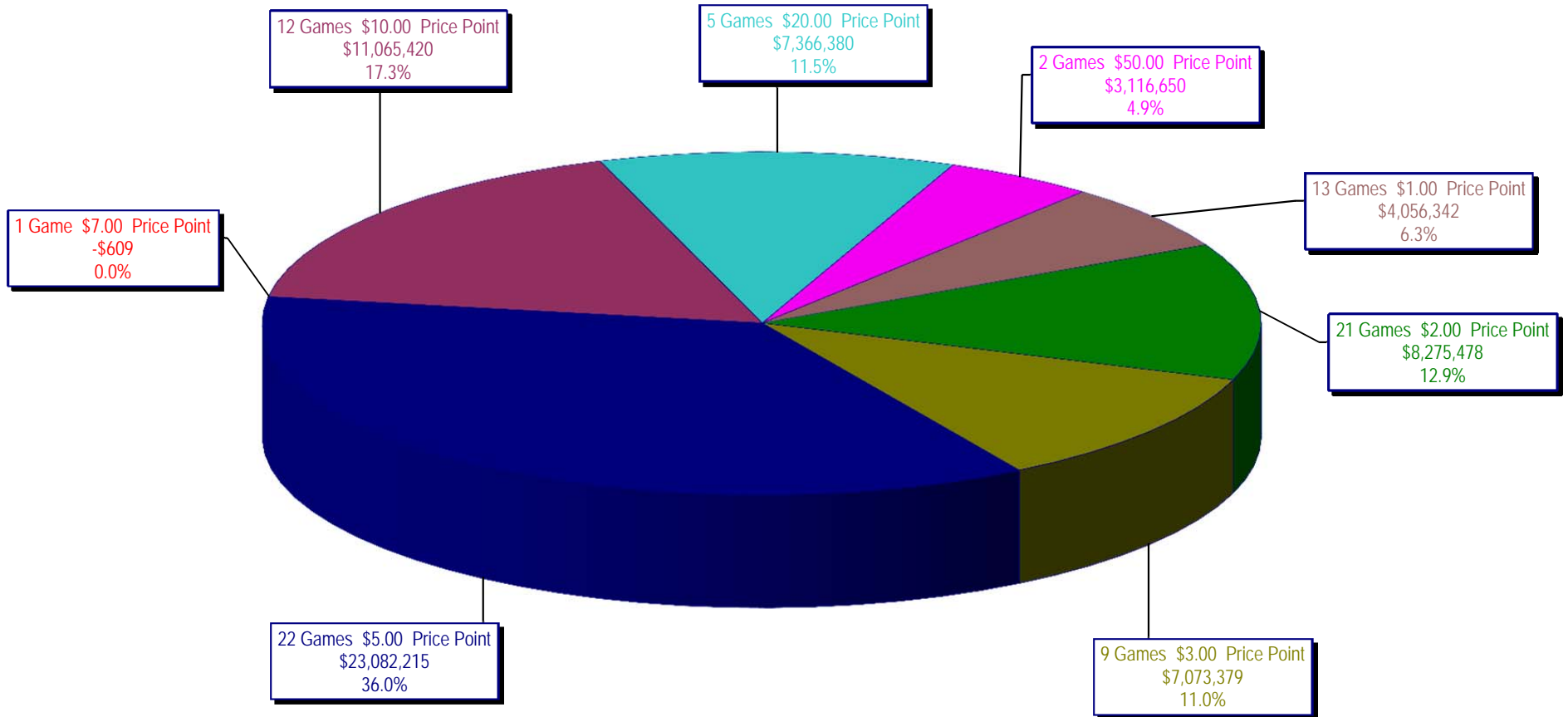
On-Line Sales

		FY Sales Through Week Ending 3/24/2012		FY Prize Expense Through Week Ending 3/24/2012	Actual* Prize Payout	Base Payout (Prize Pool)
Lotto	\$	98,300,488	\$	60,411,070	61.46%	50.00%
Pick 3		153,004,914		71,861,530	46.97%	50.00%
Pick 3 Sum It Up		3,149,550		1,481,336	47.03%	50.00%
Cash Five		37,149,585		19,290,247	51.93%	50.00%
Texas Two Step		38,117,524		19,091,352	50.09%	50.00%
Mega Millions		96,707,416		47,492,778	49.11%	50.00%**
Megaplier		20,737,621		10,286,452	49.60%	N/A
Daily 4		36,251,154		16,062,393	44.31%	50.00%
Daily 4 Sum It Up		2,666,422		1,088,405	40.82%	50.00%
Powerball		88,680,941		43,761,007	49.35%	50.00%**
Power Play		16,055,578		7,293,186	45.42%	N/A
<b>Totals</b>	\$	<b>590,821,191</b>	\$	<b>298,119,756</b>	<b>50.46%</b>	

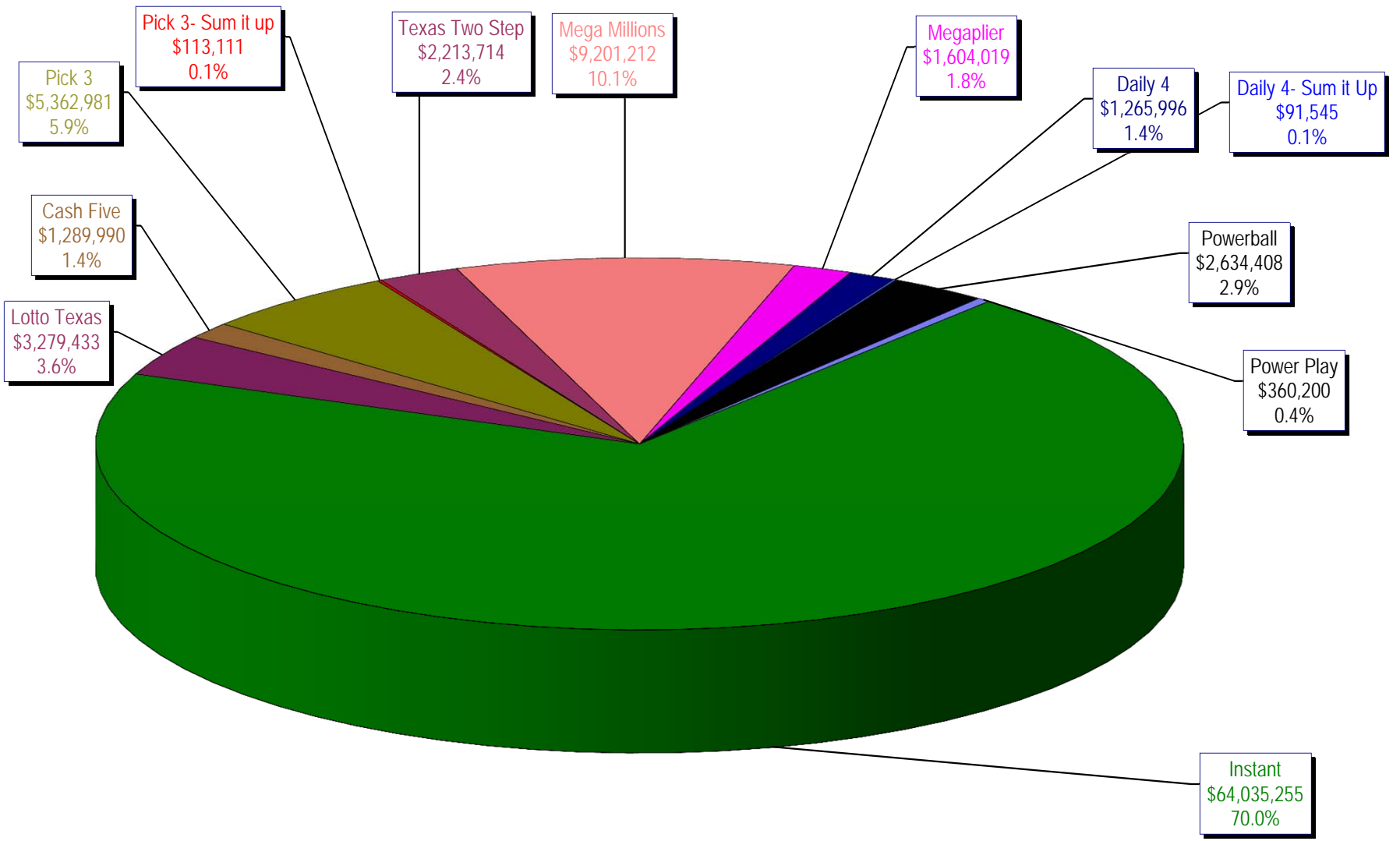
\* Before Unclaimed Prizes

\*\* Estimated; depends on # of guaranteed prizes won in Texas

Texas Lottery Commission  
Instant Ticket Sales  
For the Week Ending 03/24/2012  
(Unaudited)



**Texas Lottery Commission**  
**All Game Sales**  
**For the Week Ending 03/24/2012**  
**(Unaudited)**



Texas Lottery Commission - Weekly Sales Summary for FY 2012 (Unaudited)

Week Ended	Instant Games	New Games & Dates	Lotto Texas	Jackpot		Pick 3	Pick 3 Sum It Up	Cash Five	Texas Two Step	Jackpot		Mega Millions	Jackpot		Megaplier	Daily 4	Daily 4 Sum It Up	Powerball	Jackpot		Power Play	Total	Per Cap.
				W	S					M	TH		T	F					W	S			
9/3/2011	52,421,985	1340 (\$1,N); 1310 (\$2, N) - 08/29/11	3,710,974	23	24	5,228,940	100,997	1,239,134	989,988	225	300	2,248,664	21	29	539,246	1,221,178	93,318	2,401,555	75	91	530,686	70,726,664	2.81
9/10/2011	50,591,068	1360 (\$3, N) - 09/05/11	3,329,350	25	4	5,103,026	99,259	1,198,563	935,771	450	200	2,387,766	37	44	557,225	1,180,505	88,443	2,295,315	107	20	506,631	68,272,921	2.71
9/17/2011	49,835,063	0	3,031,798	5	6	4,953,079	100,990	1,210,562	961,592	225	300	2,801,526	54	65	626,459	1,125,230	83,532	1,560,522	25	20	387,037	66,677,389	2.64
9/24/2011	49,777,138	1362(\$1, N); 1363(\$5,N); 1364(\$5,N) - 09/19/11	3,083,973	7	8	4,819,453	97,999	1,200,444	1,283,472	450	600	3,206,022	75	86	692,909	1,092,294	82,198	1,561,655	25	30	384,383	67,281,938	2.67
10/1/2011	51,040,274	1365(\$2,N) - 09/26/11	3,196,730	9	10	4,846,896	97,026	1,215,715	1,146,613	800	200	4,033,330	96	113	830,660	1,096,271	83,993	1,693,809	37	47	412,058	69,693,374	2.76
10/8/2011	53,715,157	1366(\$1,N) - 10/03/11	3,231,892	11	12	5,064,771	102,919	1,252,733	1,004,251	225	300	2,176,684	12	14	527,777	1,188,636	92,825	2,103,034	58	71	480,159	70,940,837	2.81
10/15/2011	51,942,121	1367 (\$7, N) - 10/10/11	3,230,925	13	14	4,776,985	99,008	1,214,385	1,337,436	450	625	2,260,036	22	30	542,787	1,132,415	84,772	2,613,215	86	105	563,017	69,797,101	2.77
10/22/2011	52,837,769	1369 (\$1, N); 1370 (\$5, N) - 10/17/11	3,250,317	15	16	4,784,201	98,306	1,202,768	1,887,302	825	1,050	2,386,255	39	48	561,705	1,130,353	83,722	3,477,867	124	148	695,724	72,396,288	2.87
10/29/2011	52,206,644	1371 (\$2, N) - 10/24/11	3,302,201	17	18	4,685,786	95,887	1,186,987	2,055,399	1,300	1,550	2,592,752	57	67	596,631	1,107,441	82,921	4,895,300	173	203	903,261	73,711,209	2.92
11/5/2011	56,265,310	1373 (\$10, N) - 10/31/11	3,570,825	19	20	5,165,835	105,793	1,240,514	910,036	200	200	2,497,308	78	12	583,481	1,222,706	92,619	4,617,172	245	20	863,799	77,135,396	3.06
11/12/2011	55,682,645	1375 (\$3, N); 1374 (\$1, N) - 11/07/11	3,673,137	21	22	5,298,645	109,575	1,268,630	961,349	225	200	2,362,698	15	22	552,133	1,235,272	92,025	1,861,697	25	35	447,243	73,545,049	2.92
11/19/2011	54,978,079	1376(\$2, N); 1377 (\$5, N) - 11/14/11	3,575,231	23	24	5,216,095	106,956	1,246,366	1,059,355	225	325	2,300,050	30	40	550,825	1,224,365	89,978	2,033,222	46	60	477,542	72,858,064	2.89
11/26/2011	53,942,448	1372 (\$5, N) - 11/21/11	3,499,908	25	26	4,943,420	100,352	1,179,174	998,175	500	200	2,377,399	47	55	555,760	1,215,090	90,416	1,527,546	20	25	389,905	70,819,593	2.81
12/3/2011	57,153,469	0	3,744,456	27	28	5,267,602	108,544	1,264,649	938,225	225	200	2,830,996	64	75	636,924	1,278,857	95,379	1,708,763	31	40	424,242	75,452,105	2.99
12/10/2011	55,318,284	1378 (\$1, N); 1322 (\$5, N) - 12/5/11; 1389 (\$1, N) - 12/6/11	3,666,072	29	30	5,168,509	106,265	1,243,957	1,030,979	225	325	3,462,326	87	100	736,281	1,235,834	89,131	1,850,570	52	67	443,403	74,351,610	2.95
12/17/2011	58,612,629	1383 (\$3,N) - 12/12/11	2,963,151	4	5	5,096,413	103,606	1,257,263	1,339,991	475	650	4,412,520	116	135	882,759	1,240,640	89,229	2,163,468	78	91	496,239	78,657,908	3.12
12/24/2011	60,628,256	1379 (\$1, N); 1317 (\$2, N); 1380 (\$5, N) - 12/19/11	3,265,301	6	7	5,257,800	105,568	1,269,335	943,509	200	225	5,729,832	152	173	1,095,360	1,263,815	88,757	2,933,837	104	125	619,872	83,201,242	3.30
12/31/2011	63,065,007	0	3,368,593	8	9	5,211,663	107,395	1,275,257	1,200,536	325	450	4,358,985	206	12	878,865	1,244,035	88,079	1,788,226	20	25	426,888	83,013,528	3.29
1/7/2012	60,479,896	1381 (\$5,N); 1277 (\$50,N) - 1/3/12; 1429 (\$5,N); 1401 (\$10, N) - 1/4/12	3,193,532	10	11	5,246,112	108,060	1,281,653	1,135,472	625	200	2,298,815	15	25	550,191	1,240,736	90,116	1,763,484	30	44	423,718	77,811,784	3.09
1/14/2012	57,689,526	1382 (\$2,N); 1232 (\$10, N) - 1/9/12	3,259,338	12	13	5,061,130	103,687	1,270,289	1,059,875	225	350	2,542,675	33	42	587,013	1,229,792	87,637	1,921,683	54	66	445,614	75,258,258	2.98
1/21/2012	58,704,854	1384 (\$1, N); 1385 (\$5,N) - 1/16/12	3,310,397	14	15	5,033,947	104,874	1,252,621	1,422,729	500	650	2,696,266	50	60	594,142	1,204,955	88,136	3,611,989	80	100	566,485	78,591,394	3.12
1/28/2012	57,611,325	0	3,295,592	16	17	4,996,799	103,779	1,241,568	1,940,577	875	1,100	2,426,609	71	12	544,967	1,197,885	85,833	4,311,550	120	146	496,540	78,253,022	3.10
2/4/2012	65,553,366	1434 (\$2, N); 1142 (\$20, N) - 01/30/12	3,526,781	18	19	5,493,300	112,992	1,316,899	2,230,312	1,350	1,650	2,212,907	15	23	525,610	1,315,424	96,711	6,186,774	170	200	672,146	89,243,221	3.54
2/11/2012	75,070,485	1361 (\$5,N); 1362 (\$1, N); 1388 (\$3, N) - 02/06/12	3,569,296	20	21	5,678,360	119,455	1,321,397	983,011	200	225	2,388,865	32	41	562,554	1,332,218	97,927	10,633,290	250	325	1,675,211	103,432,068	4.10
2/18/2012	66,679,947	1433 (\$10, N) - 02/13/12	3,230,364	22	4	5,467,216	114,573	1,316,645	955,165	200	200	2,625,022	51	61	605,640	1,294,454	95,383	3,310,544	40	50	573,610	86,268,562	3.42
2/25/2012	64,868,899	1253 (\$2,N); 1431 (\$5,N) - 02/20/2012	3,046,687	5	6	5,452,765	115,785	1,312,655	980,607	225	200	2,972,219	72	83	659,936	1,283,389	92,775	3,590,429	60	70	458,143	84,834,287	3.36
3/3/2012	67,135,065	1393 (\$1,N); 1437 (\$5, N) - 02/27/2012	3,166,827	7	8	5,754,954	121,213	1,355,233	1,129,262	225	350	3,675,723	94	108	782,787	1,379,907	101,888	3,066,811	40	50	412,577	88,082,246	3.49
3/10/2012	68,299,006	1395 (\$2, N); 1396 (\$5, N); - 03/05/2012; 1349 (\$10, N) - 03/08/2012	3,239,012	9	10	5,637,055	121,996	1,342,258	1,564,625	525	700	4,549,049	127	148	919,907	1,359,810	98,371	2,927,846	60	40	392,711	90,451,645	3.59

Texas Lottery Commission - Weekly Sales Summary for FY 2012 (Unaudited)

Week Ended	Instant Games	New Games & Dates	Lotto Texas	Jackpot		Pick 3	Pick 3 Sum It Up	Cash Five	Texas Two Step	Jackpot		Mega Millions	Jackpot		Megaplier	Daily 4	Daily 4 Sum It Up	Powerball	Jackpot		Power Play	Total	Per Cap.
				W	S					M	TH		T	F					W	S			
3/17/2012	65,013,692	0	3,238,467	11	12	5,355,241	111,158	1,304,908	2,011,205	925	1,150	5,753,985	171	200	1,113,018	1,281,976	92,281	2,718,408	50	60	371,071	88,365,410	3.50
3/24/2012	64,035,255	1397 (\$1,N); 1398 (\$5,N); - 03/19/2012; 1428 (\$2,N) - 03/22/2012	3,279,433	13	14	5,362,981	113,111	1,289,990	2,213,714	1,450	1,750	9,201,212	241	290	1,604,019	1,265,996	91,545	2,634,408	70	40	360,200	91,451,864	3.63
weekly change	-1.5%		1.3%			0.1%	1.8%	-1.1%	10.1%			59.9%			44.1%	-1.2%	-0.8%	-3.1%				-2.9%	3.5%
	<b>SALES</b>		<b>SALES</b>			<b>SALES</b>	<b>SALES</b>	<b>SALES</b>	<b>SALES</b>			<b>SALES</b>			<b>SALES</b>	<b>SALES</b>	<b>SALES</b>	<b>SALES</b>			<b>SALES</b>	<b>SALES</b>	<b>% of Sales</b>
Startup to date	43,599,238,060		11,006,306,547			4,280,365,235	26,452,882	2,358,058,246	615,951,991			1,582,139,141			360,872,792	237,253,843	25,635,861	245,072,825			52,318,923	64,597,800,316	100.0%
Calendar Year to date	771,141,316		39,355,726			64,539,856	1,350,680	15,606,116	17,626,554			43,343,347			9,049,784	15,386,540	1,118,600	46,677,216			6,848,026	1,032,043,759	100.0%
Fiscal Year to date 2012	1,723,879,858		98,300,488			153,004,914	3,149,550	37,149,585	38,117,524			96,707,416			20,737,621	36,251,154	2,666,422	88,680,941			16,055,578	2,314,701,049	100.0%