



WEEKLY SALES SUMMARY

Unaudited

[Week Ending: 03/31/2012](#)

Texas Lottery Commission
Fiscal Year to Date Sales Comparison
Unaudited

Through the week ending 03/31/2012 (31 weeks)

Sales by Game	FY 2010 *	FY 2011 **	FY 2012	\$ Change		% Change	
				FY 2012 to FY 2010	FY 2012 to FY 2011 to	FY 2012 to FY 2010	FY 2012 to FY 2011
Instants	\$ 1,660,366,898	\$ 1,678,582,501	\$ 1,789,015,849	\$ 128,648,951	\$ 110,433,348	7.7%	6.6%
Lotto Texas	159,109,172	102,688,641	102,188,789	-56,920,383	-499,852	-35.8%	-0.5%
Pick 3	160,549,552	161,984,518	158,444,588	-2,104,964	-3,539,930	-1.3%	-2.2%
Pick 3 Sum It Up	3,235,814	3,264,400	3,271,626	35,812	7,226	1.1%	0.2%
Cash Five	39,754,967	38,194,005	38,475,953	-1,279,014	281,949	-3.2%	0.7%
Texas Two Step	26,546,273	27,966,883	39,122,107	12,575,834	11,155,224	47.4%	39.9%
Mega Millions	106,520,747	121,658,288	156,974,316	50,453,569	35,316,028	47.4%	29.0%
Megaplier	23,899,738	24,513,765	28,581,708	4,681,970	4,067,943	19.6%	16.6%
Daily 4	31,113,573	33,839,361	37,563,487	6,449,914	3,724,126	20.7%	11.0%
Daily 4 Sum It Up	2,913,718	2,628,931	2,763,801	-149,917	134,870	-5.1%	5.1%
Powerball	15,192,132	53,195,853	91,630,503	76,438,371	38,434,650	-	72.3%
Power Play	3,637,903	12,603,927	16,433,302	12,795,399	3,829,375	-	30.4%
Total	\$ 2,232,840,485	\$ 2,261,121,072	\$ 2,464,466,027	\$ 231,625,542	\$ 203,344,955	10.4%	9.0%

* 2 extra days

** 1 extra day

Texas Lottery Commission
 Fiscal Year to Date Cumulative Average Sales Comparison
 Unaudited

Through the week ending 03/31/2012 (31 weeks)

Sales by Game	FY 2010	FY 2011	FY 2012
Instant	\$ 7,982,533	\$ 8,109,094	\$ 8,684,543
Lotto Texas	764,948	496,080	496,062
Pick 3	771,873	782,534	769,148
Pick 3 Sum It Up	15,557	15,770	15,882
Cash Five	191,130	184,512	186,776
Texas Two Step	127,626	135,106	189,913
Mega Millions	512,119	587,721	762,011
Megaplier	114,903	118,424	138,746
Daily 4	149,584	163,475	182,347
Daily 4 Sum It Up	14,008	12,700	13,417
Powerball	271,288 *	256,985	444,808
Power Play	64,963 *	60,889	79,773
Total	\$ 10,980,532	\$ 10,923,290	\$ 11,963,427

thru 04/03/2010

thru 04/02/2011

thru 03/31/2012

215 days

214 days

213 days

* 63 days

Texas Lottery Commission
Fiscal Year Over Year Change in Sales
Unaudited
FY 2012 Compared to FY 2011

Week	FY 2012 Week Ending	INSTANT TICKETS				ON-LINE GAMES				TOTAL SALES			
		FY 2012	FY 2011	Difference	% change - Cumulative Sales	FY 2012	FY 2011	Difference	% change - Cumulative Sales	FY 2012	FY 2011	Difference	% change - Cumulative Sales
1	9/3/2011**	\$25,147,181	\$31,659,033	(\$6,511,852)	-20.6%	\$9,704,561	\$11,430,717	(\$1,726,156)	-15.1%	\$34,851,742	\$43,089,750	(\$8,238,008)	-19.1%
2	9/10/2011	\$50,591,068	\$48,912,598	\$1,678,470	3.4%	\$17,681,853	\$16,398,160	\$1,283,693	7.8%	\$68,272,921	\$65,310,758	\$2,962,163	4.5%
3	9/17/2011	\$49,835,063	\$48,988,241	\$846,822	1.7%	\$16,842,326	\$17,166,827	(\$324,501)	-1.9%	\$66,677,389	\$66,155,068	\$522,321	0.8%
4	9/24/2011	\$49,777,138	\$48,471,310	\$1,305,828	2.7%	\$17,504,800	\$15,623,813	\$1,880,987	12.0%	\$67,281,938	\$64,095,123	\$3,186,815	5.0%
5	10/1/2011	\$51,040,274	\$50,145,138	\$895,136	1.8%	\$18,653,100	\$16,453,939	\$2,199,161	13.4%	\$69,693,374	\$66,599,077	\$3,094,297	4.6%
6	10/8/2011	\$53,715,157	\$50,918,591	\$2,796,566	5.5%	\$17,225,680	\$16,974,963	\$250,717	1.5%	\$70,940,837	\$67,893,554	\$3,047,283	4.5%
7	10/15/2011	\$51,942,121	\$49,096,011	\$2,846,110	5.8%	\$17,854,980	\$16,661,904	\$1,193,077	7.2%	\$69,797,101	\$65,757,915	\$4,039,187	6.1%
8	10/22/2011	\$52,837,769	\$50,158,946	\$2,678,823	5.3%	\$19,558,519	\$17,374,460	\$2,184,060	12.6%	\$72,396,288	\$67,533,406	\$4,862,883	7.2%
9	10/29/2011	\$52,206,644	\$49,775,287	\$2,431,357	4.9%	\$21,504,565	\$18,402,209	\$3,102,356	16.9%	\$73,711,209	\$68,177,496	\$5,533,713	8.1%
10	11/5/2011	\$56,265,310	\$53,337,848	\$2,927,462	5.5%	\$20,870,086	\$17,321,908	\$3,548,179	20.5%	\$77,135,396	\$70,659,756	\$6,475,641	9.2%
11	11/12/2011	\$55,682,645	\$52,285,479	\$3,397,166	6.5%	\$17,862,404	\$16,388,690	\$1,473,714	9.0%	\$73,545,049	\$68,674,169	\$4,870,880	7.1%
12	11/19/2011	\$54,978,079	\$52,424,036	\$2,554,043	4.9%	\$17,879,985	\$16,138,022	\$1,741,963	10.8%	\$72,858,064	\$68,562,058	\$4,296,006	6.3%
13	11/26/2011	\$53,942,448	\$51,262,518	\$2,679,930	5.2%	\$16,877,145	\$15,967,075	\$910,070	5.7%	\$70,819,593	\$67,229,593	\$3,590,000	5.3%
14	12/3/2011	\$57,153,469	\$56,385,259	\$768,210	1.4%	\$18,298,636	\$17,553,175	\$745,461	4.2%	\$75,452,105	\$73,938,434	\$1,513,671	2.0%
15	12/10/2011	\$55,318,284	\$56,540,048	(\$1,221,764)	-2.2%	\$19,033,326	\$17,703,352	\$1,329,975	7.5%	\$74,351,610	\$74,243,400	\$108,211	0.1%
16	12/17/2011	\$58,612,629	\$57,699,991	\$912,638	1.6%	\$20,045,279	\$18,465,282	\$1,579,997	8.6%	\$78,657,908	\$76,165,273	\$2,492,635	3.3%
17	12/24/2011	\$60,628,256	\$59,800,480	\$827,776	1.4%	\$22,572,986	\$19,635,771	\$2,937,215	15.0%	\$83,201,242	\$79,436,251	\$3,764,991	4.7%
18	12/31/2011	\$63,065,007	\$61,423,121	\$1,641,886	2.7%	\$19,948,521	\$26,122,257	(\$6,173,736)	-23.6%	\$83,013,528	\$87,545,378	(\$4,531,850)	-5.2%
19	1/7/2012	\$60,479,896	\$60,976,653	(\$496,757)	-0.8%	\$17,331,888	\$33,521,570	(\$16,189,682)	-48.3%	\$77,811,784	\$94,498,223	(\$16,686,439)	-17.7%
20	1/14/2012	\$57,689,526	\$50,099,433	\$7,590,093	15.2%	\$17,568,732	\$17,114,637	\$454,096	2.7%	\$75,258,258	\$67,214,070	\$8,044,189	12.0%
21	1/21/2012	\$58,704,854	\$53,143,646	\$5,561,208	10.5%	\$19,886,540	\$18,091,208	\$1,795,332	9.9%	\$78,591,394	\$71,234,854	\$7,356,540	10.3%
22	1/28/2012	\$57,611,325	\$54,096,128	\$3,515,197	6.5%	\$20,641,697	\$17,446,156	\$3,195,542	18.3%	\$78,253,022	\$71,542,284	\$6,710,739	9.4%
23	2/4/2012	\$65,553,366	\$53,433,592	\$12,119,774	22.7%	\$23,689,855	\$17,388,581	\$6,301,274	36.2%	\$89,243,221	\$70,822,173	\$18,421,048	26.0%
24	2/11/2012	\$75,070,485	\$60,277,094	\$14,793,391	24.5%	\$28,361,583	\$18,233,038	\$10,128,545	55.6%	\$103,432,068	\$78,510,132	\$24,921,936	31.7%
25	2/18/2012	\$66,679,947	\$61,536,763	\$5,143,184	8.4%	\$19,588,615	\$19,387,518	\$201,097	1.0%	\$86,268,562	\$80,924,281	\$5,344,281	6.6%
26	2/25/2012	\$64,868,899	\$59,046,203	\$5,822,696	9.9%	\$19,965,388	\$20,054,404	(\$89,016)	-0.4%	\$84,834,287	\$79,100,607	\$5,733,680	7.2%
27	3/3/2012	\$67,135,065	\$60,537,060	\$6,598,005	10.9%	\$20,947,181	\$19,478,807	\$1,468,374	7.5%	\$88,082,246	\$80,015,867	\$8,066,379	10.1%
28	3/10/2012	\$68,299,006	\$59,997,361	\$8,301,645	13.8%	\$22,152,639	\$19,601,658	\$2,550,982	13.0%	\$90,451,645	\$79,599,019	\$10,852,627	13.6%
29	3/17/2012	\$65,013,692	\$57,835,554	\$7,178,138	12.4%	\$23,351,718	\$21,189,563	\$2,162,155	10.2%	\$88,365,410	\$79,025,117	\$9,340,293	11.8%
30	3/24/2012	\$64,035,255	\$57,911,940	\$6,123,315	10.6%	\$27,416,609	\$29,729,651	(\$2,313,043)	-7.8%	\$91,451,864	\$87,641,591	\$3,810,273	4.3%
31	3/31/2012	\$65,135,991	\$60,407,139	\$4,728,852	7.8%	\$84,628,987	\$19,519,264	\$65,109,724	333.6%	\$149,764,978	\$79,926,403	\$69,838,576	87.4%
32	4/7/2012		\$60,704,285				\$19,455,317				\$80,159,602		
33	4/14/2012		\$57,663,398				\$17,866,867				\$75,530,265		
34	4/21/2012		\$56,740,216				\$17,429,326				\$74,169,542		
35	4/28/2012		\$58,042,011				\$17,104,548				\$75,146,559		
36	5/5/2012		\$66,509,159				\$17,744,833				\$84,253,992		
37	5/12/2012		\$53,769,716				\$17,783,942				\$71,553,658		
38	5/19/2012		\$53,704,228				\$18,623,882				\$72,328,110		
39	5/26/2012		\$52,310,134				\$19,115,921				\$71,426,055		
40	6/2/2012		\$53,256,725				\$18,462,603				\$71,719,328		
41	6/9/2012		\$54,293,614				\$17,213,019				\$71,506,633		
42	6/16/2012		\$52,688,230				\$17,534,413				\$70,222,643		

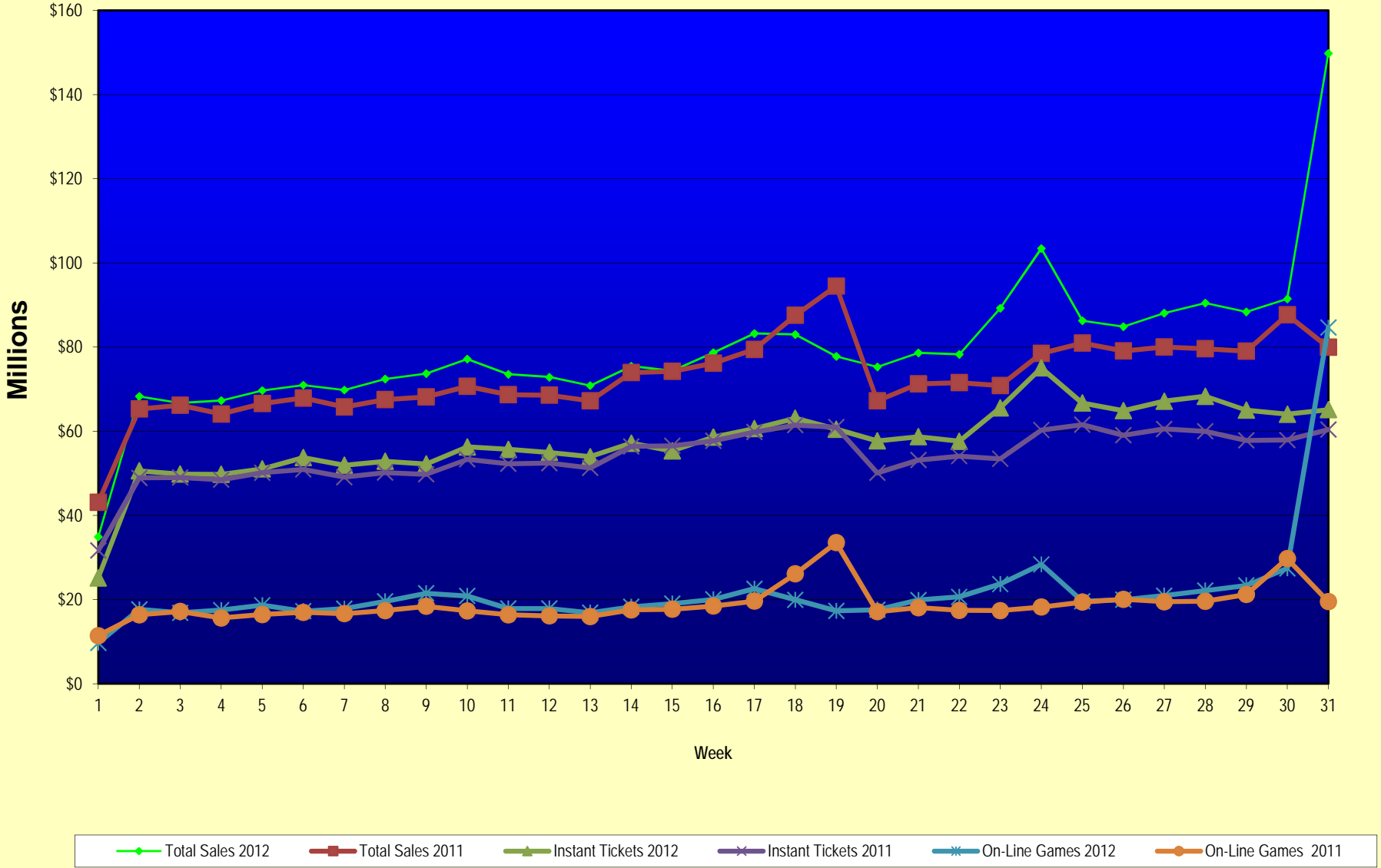
Note: Week 1 is not a full week of sales as this report is prepared on a Fiscal Year basis.

Texas Lottery Commission
Fiscal Year Over Year Change in Sales
Unaudited
FY 2012 Compared to FY 2011

Week	FY 2012 Week Ending	INSTANT TICKETS				ON-LINE GAMES				TOTAL SALES			
		FY 2012	FY 2011	Difference	% change - Cumulative Sales	FY 2012	FY 2011	Difference	% change - Cumulative Sales	FY 2012	FY 2011	Difference	% change - Cumulative Sales
43	6/23/2012		\$53,174,595				\$17,086,937				\$70,261,532		
44	6/30/2012		\$53,687,509				\$18,406,785				\$72,094,294		
45	7/7/2012		\$53,054,685				\$16,211,989				\$69,266,674		
46	7/14/2012		\$51,161,290				\$16,945,733				\$68,107,023		
47	7/21/2012		\$50,807,750				\$17,362,213				\$68,169,963		
48	7/28/2012		\$51,277,179				\$18,870,764				\$70,147,943		
49	8/4/2012		\$53,320,489				\$20,922,034				\$74,242,523		
50	8/11/2012		\$50,914,022				\$19,467,124				\$70,381,146		
51	8/18/2012		\$49,905,898				\$17,419,045				\$67,324,943		
52	8/25/2012		\$49,424,242				\$16,837,474				\$66,261,716		
	8/31/2012		\$27,274,804				\$8,600,118				\$35,874,922		
Total thru Current Week		\$1,789,015,849	\$1,678,582,501	\$110,433,348	6.6%	\$675,450,178	\$582,538,571	\$92,911,607	15.9%	\$2,464,466,027	\$2,261,121,072	\$203,344,955	9.0%
Fiscal Year Total		\$1,789,015,849	\$2,842,266,680			\$675,450,178	\$969,003,455			\$2,464,466,027	\$3,811,270,135		

** FY 2011 includes 4 days; FY 2012 includes 3 days

Texas Lottery Commission Fiscal Year Over Year Change in Sales



Note: Week 1 is not a full week of sales as this report is prepared on a Fiscal Year basis.

Texas Lottery Commission
Instant Tickets by Price Point
Sales, Prize Expense, Sales Contribution and Payout Percentage With Year Over Year Changes
Unaudited

Fiscal Year	Price Point	# of Active Games	FY Sales	% of Instant Ticket Sales	Year over Year Change in Sales	FY Prize Expense	Year over Year Change in Prize Expense	FY Sales Contribution	Year over Year Change in Contribution	Average Prize Payout %	Year over Year Change in Payout %
2011	\$1.00	31	125,745,701	7.5%		76,915,603		48,830,098		61.2%	1.8%
thru	\$2.00	31	236,461,434	14.1%		154,780,767		81,680,667		65.5%	0.5%
4/2/2011	\$3.00	18	203,971,125	12.2%		133,791,170		70,179,955		65.6%	0.0%
	\$5.00	41	524,490,970	31.2%		356,405,959		168,085,011		68.0%	-0.1%
	\$7.00	7	69,987,771	4.2%		47,581,428		22,406,343		68.0%	0.0%
	\$10.00	15	243,423,860	14.5%		172,700,087		70,723,773		70.9%	1.4%
	\$20.00	6	218,117,340	13.0%		162,002,659		56,114,681		74.3%	1.5%
	\$50.00	2	56,384,300	3.4%		43,785,053		12,599,247		77.7%	4.2%
Total		151	\$1,678,582,501			\$1,147,962,726		\$530,619,775		68.4%	0.9%
2012	\$1.00	31	131,569,780	7.4%		80,235,683		51,334,097		61.0%	0.4%
thru	\$2.00	33	241,856,304	13.5%		157,301,313		84,554,991		65.0%	-0.8%
3/31/2012	\$3.00	16	216,435,360	12.1%		141,895,574		74,539,786		65.6%	0.0%
	\$5.00	42	577,720,700	32.3%		393,277,579		184,443,121		68.1%	0.2%
	\$7.00	4	18,186,945	1.0%		12,366,956		5,819,990		68.0%	0.0%
	\$10.00	17	292,031,780	16.3%		206,135,223		85,896,557		70.6%	-0.6%
	\$20.00	6	236,520,280	13.2%		176,598,714		59,921,566		74.7%	0.0%
	\$50.00	2	74,694,700	4.2%		58,004,818		16,689,882		77.7%	0.0%
Total		151	\$1,789,015,849			\$1,225,815,860		\$563,199,989		68.5%	0.0%
Variance	\$1.00	0	5,824,079		4.6%	3,320,080	4.3%	2,503,999	5.1%	-0.18%	
2012 to	\$2.00	2	5,394,870		2.3%	2,520,546	1.6%	2,874,324	3.5%	-0.42%	
2011	\$3.00	-2	12,464,235		6.1%	8,104,404	6.1%	4,359,831	6.2%	-0.03%	
	\$5.00	1	53,229,730		10.1%	36,871,620	10.3%	16,358,110	9.7%	0.12%	
	\$7.00	-3	-51,800,826		-74.0%	-35,214,473	-74.0%	-16,586,353	-74.0%	0.01%	
	\$10.00	2	48,607,920		20.0%	33,435,137	19.4%	15,172,783	21.5%	-0.36%	
	\$20.00	0	18,402,940		8.4%	14,596,055	9.0%	3,806,885	6.8%	0.39%	
	\$50.00	0	18,310,400		32.5%	14,219,766	32.5%	4,090,634	32.5%	0.00%	
Total		0	\$110,433,348		6.6%	\$77,853,135	6.8%	\$32,580,213	6.1%	0.13%	

Notes - Instant Ticket Variances

Texas Lottery Commission
Instant Tickets by Price Point
Sales, Prize Expense, Sales Contribution and Payout Percentage With Year Over Year Changes
 Unaudited

			FY 2012		FY 2011	Difference
Sales	\$1 - \$7		\$1,185,769,089		\$1,160,657,001	\$25,112,088
Prize Exp.	\$1 - \$7		\$785,077,104		\$769,474,928	\$15,602,177
Sales Cont.	\$1 - \$7		\$400,691,985		\$391,182,073	\$9,509,911
Prize Exp. %	\$1 - \$7		66.2%		66.3%	-0.1%
			FY 2012		FY 2011	Difference
Sales	\$10 - \$50		\$603,246,760		\$517,925,500	\$85,321,260
Prize Exp.	\$10 - \$50		\$440,738,756		\$378,487,798	\$62,250,958
Sales Cont.	\$10 - \$50		\$162,508,004		\$139,437,702	\$23,070,302
Prize Exp. %	\$10 - \$50		73.1%		73.1%	0.0%
			FY 2012		FY 2011	Difference
Sales	Instant		\$1,789,015,849		\$1,678,582,501	\$110,433,348
Prize Exp.	Instant		\$1,225,815,860		\$1,147,962,726	\$77,853,135
Sales Cont.	Instant		\$563,199,989		\$530,619,775	\$32,580,213
Prize Exp. %	Instant		68.5%		68.4%	0.1%

			FY 2012		FY 2011	Difference
Sales	\$1 - \$10		\$1,477,800,869		\$1,404,080,861	\$73,720,008
Prize Exp.	\$1 - \$10		\$991,212,328		\$942,175,014	\$49,037,313
Sales Cont.	\$1 - \$10		\$486,588,541		\$461,905,847	\$24,682,695
Prize Exp. %	\$1 - \$10		67.1%		67.1%	0.0%
			FY 2012		FY 2011	Difference
Sales	\$20 - \$50		\$311,214,980		\$274,501,640	\$36,713,340
Prize Exp.	\$20 - \$50		\$234,603,533		\$205,787,712	\$28,815,821
Sales Cont.	\$20 - \$50		\$76,611,447		\$68,713,928	\$7,897,519
Prize Exp. %	\$20 - \$50		75.4%		75.0%	0.4%
			FY 2012		FY 2011	Difference
Sales	Instant		\$1,789,015,849		\$1,678,582,501	\$110,433,348
Prize Exp.	Instant		\$1,225,815,860		\$1,147,962,726	\$77,853,135
Sales Cont.	Instant		\$563,199,989		\$530,619,775	\$32,580,213
Prize Exp. %	Instant		68.5%		68.4%	0.1%

Texas Lottery Commission
Weekly Sales Summary
& Comparison to Previous Week
 Unaudited

	Week Ending 03/31/2012		Week Ending 03/24/2012			
	<u>THIS WEEK</u>	% of Sales	<u>LAST WEEK</u>	% of Sales	<u>\$ change</u>	<u>% change</u>
Total Sales	<u>\$149,764,978</u>		<u>\$91,451,864</u>		<u>\$58,313,115</u>	63.76%
Instant Tickets	<u>\$65,135,991</u>	43.5%	<u>\$64,035,255</u>	70.0%	<u>\$1,100,736</u>	1.72%
Lotto	\$3,888,301	2.6%	\$3,279,433	3.6%	\$608,868	18.57%
Pick 3	\$5,439,674	3.6%	\$5,362,981	5.9%	\$76,694	1.43%
Pick 3 Sum It Up	\$122,076	0.1%	\$113,111	0.1%	\$8,965	7.93%
Cash Five	\$1,326,368	0.9%	\$1,289,990	1.4%	\$36,378	2.82%
Texas Two Step	\$1,004,583	0.7%	\$2,213,714	2.4%	-\$1,209,131	-54.62%
Mega Millions	\$60,266,900	40.2%	\$9,201,212	10.1%	\$51,065,688	554.99%
Megaplier	\$7,844,087	5.2%	\$1,604,019	1.8%	\$6,240,068	389.03%
Daily 4	\$1,312,333	0.9%	\$1,265,996	1.4%	\$46,337	3.66%
Daily 4 Sum It Up	\$97,380	0.1%	\$91,545	0.1%	\$5,835	6.37%
Powerball	\$2,949,562	2.0%	\$2,634,408	2.9%	\$315,154	11.96%
Power Play	\$377,724	0.3%	\$360,200	0.4%	\$17,524	4.87%
Total Online Sales	<u>\$84,628,987</u>		<u>\$27,416,609</u>		<u>\$57,212,379</u>	208.68%

* Totals may not sum due to rounding.

Texas Lottery Commission
Weekly Sales Summary
Unaudited

INSTANT TICKETS
TOP TEN SELLING GAMES

For the Week Ending : 03/31/2012

Rank	Price Point	Game	Sales (Millions)
1	\$ 10	\$200 MILLION CASH SPECTACULAR	\$ 4.607
2	\$ 5	CASH FARMER	\$ 4.087
3	\$ 20	MAXIMUM MILLIONS	\$ 2.920
4	\$ 5	EMERALD 7'S	\$ 2.869
5	\$ 5	\$100,000 SILVER & GOLD	\$ 2.699
6	\$ 20	\$500 MILLION FRENZY	\$ 2.649
7	\$ 50	CASINO ACTION	\$ 2.468
8	\$ 3	LOTERIA TEXAS	\$ 2.343
9	\$ 3	BONUS CASHWORD	\$ 2.176
10	\$ 5	MONTHLY BONUS	\$ 2.113

Texas Lottery Commission
Prize Payout Tracking Report
Unaudited

Through Week Ending 03/31/2012

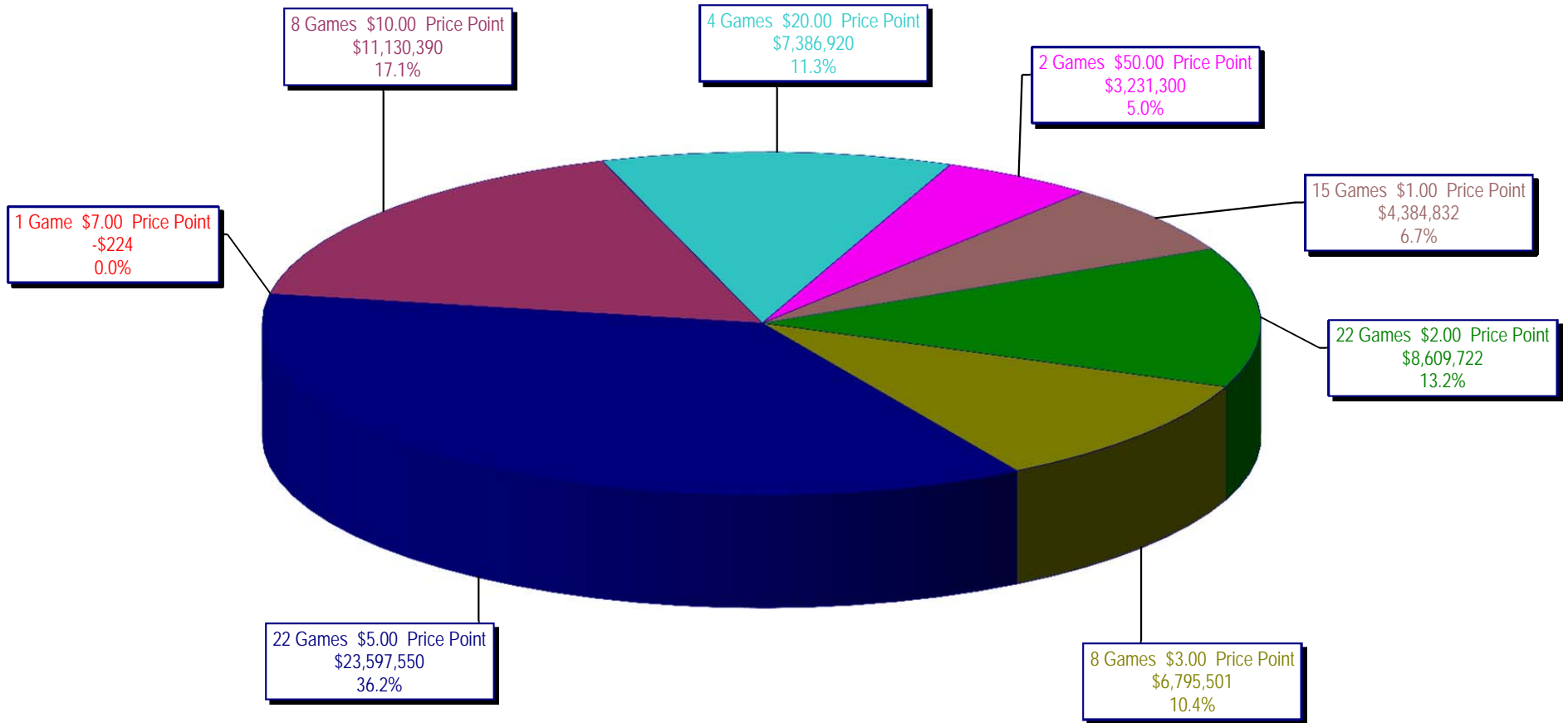
On-Line Sales

		FY Sales Through Week Ending 3/31/2012		FY Prize Expense Through Week Ending 3/31/2012	Actual* Prize Payout	Base Payout (Prize Pool)
Lotto	\$	102,188,789	\$	62,356,065	61.02%	50.00%
Pick 3		158,444,588		74,197,811	46.83%	50.00%
Pick 3 Sum It Up		3,271,626		1,529,132	46.74%	50.00%
Cash Five		38,475,953		19,962,001	51.88%	50.00%
Texas Two Step		39,122,107		19,593,968	50.08%	50.00%
Mega Millions		156,974,316		69,777,290	44.45%	50.00%**
Megaplier		28,581,708		12,327,971	43.13%	N/A
Daily 4		37,563,487		17,750,968	47.26%	50.00%
Daily 4 Sum It Up		2,763,801		1,227,683	44.42%	50.00%
Powerball		91,630,503		45,152,025	49.28%	50.00%**
Power Play		16,433,302		7,395,772	45.00%	N/A
Totals	\$	675,450,178	\$	331,270,686	49.04%	

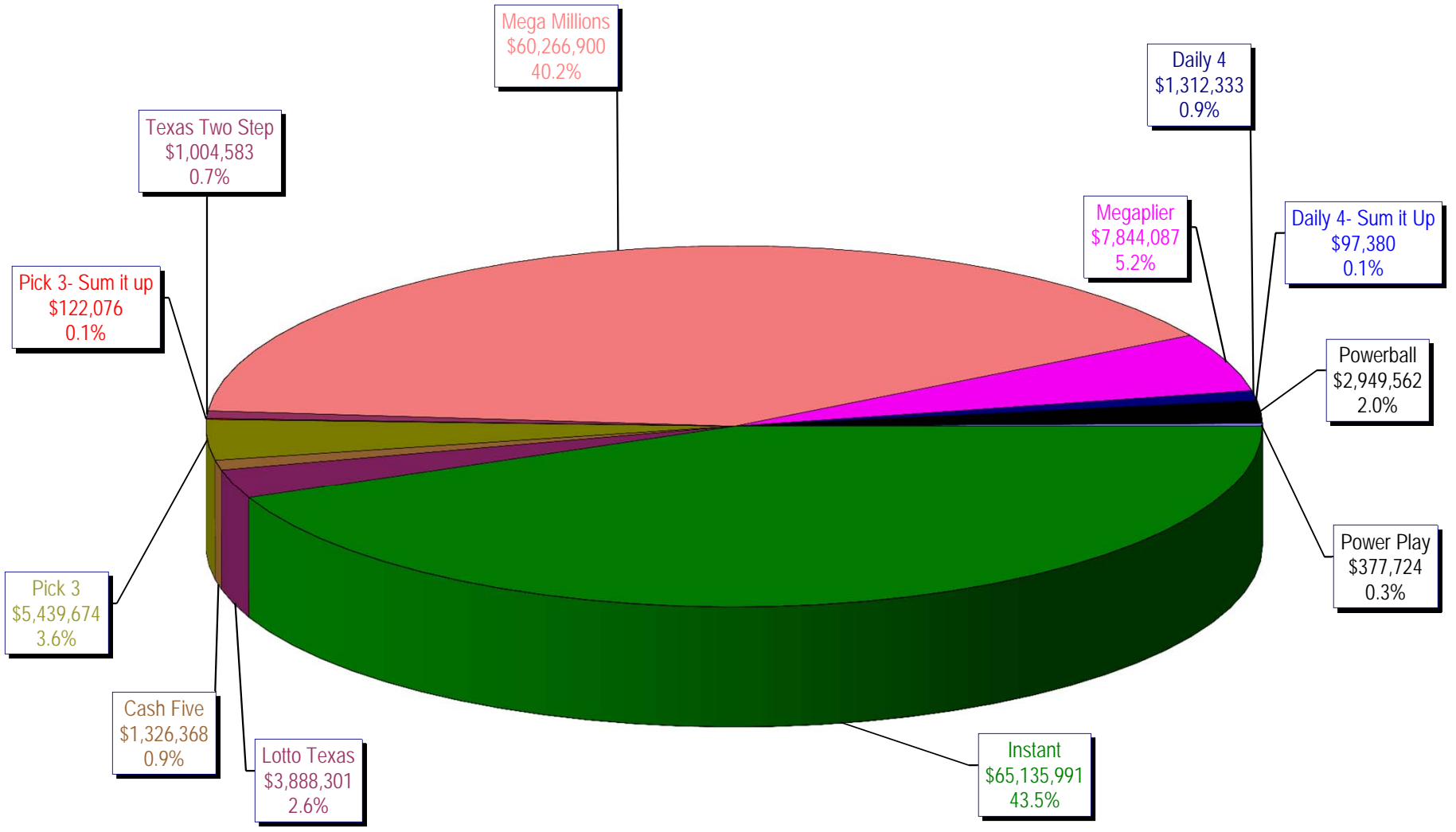
* Before Unclaimed Prizes

** Estimated; depends on # of guaranteed prizes won in Texas

Texas Lottery Commission
Instant Ticket Sales
For the Week Ending 03/31/2012
(Unaudited)



Texas Lottery Commission
All Game Sales
For the Week Ending 03/31/2012
(Unaudited)



Texas Lottery Commission - Weekly Sales Summary for FY 2012 (Unaudited)

Week Ended	Instant Games	New Games & Dates	Lotto Texas	Jackpot W	Jackpot S	Pick 3	Pick 3 Sum It Up	Cash Five	Texas Two Step	Jackpot M	Jackpot TH	Mega Millions	Jackpot T	Jackpot F	Megaplier	Daily 4	Daily 4 Sum It Up	Powerball	Jackpot W	Jackpot S	Power Play	Total	Per Cap.
9/3/2011	52,421,985	1340 (\$1,N); 1310 (\$2, N) - 08/29/11	3,710,974	23	24	5,228,940	100,997	1,239,134	989,988	225	300	2,248,664	21	29	539,246	1,221,178	93,318	2,401,555	75	91	530,686	70,726,664	2.81
9/10/2011	50,591,068	1360 (\$3, N) - 09/05/11	3,329,350	25	4	5,103,026	99,259	1,198,563	935,771	450	200	2,387,766	37	44	557,225	1,180,505	88,443	2,295,315	107	20	506,631	68,272,921	2.71
9/17/2011	49,835,063	0	3,031,798	5	6	4,953,079	100,990	1,210,562	961,592	225	300	2,801,526	54	65	626,459	1,125,230	83,532	1,560,522	25	20	387,037	66,677,389	2.64
9/24/2011	49,777,138	1362(\$1, N); 1363(\$5,N); 1364(\$5,N) - 09/19/11	3,083,973	7	8	4,819,453	97,999	1,200,444	1,283,472	450	600	3,206,022	75	86	692,909	1,092,294	82,198	1,561,655	25	30	384,383	67,281,938	2.67
10/1/2011	51,040,274	1365(\$2,N) - 09/26/11	3,196,730	9	10	4,846,896	97,026	1,215,715	1,146,613	800	200	4,033,330	96	113	830,660	1,096,271	83,993	1,693,809	37	47	412,058	69,693,374	2.76
10/8/2011	53,715,157	1366(\$1,N) - 10/03/11	3,231,892	11	12	5,064,771	102,919	1,252,733	1,004,251	225	300	2,176,684	12	14	527,777	1,188,636	92,825	2,103,034	58	71	480,159	70,940,837	2.81
10/15/2011	51,942,121	1367 (\$7, N) - 10/10/11	3,230,925	13	14	4,776,985	99,008	1,214,385	1,337,436	450	625	2,260,036	22	30	542,787	1,132,415	84,772	2,613,215	86	105	563,017	69,797,101	2.77
10/22/2011	52,837,769	1369 (\$1, N); 1370 (\$5, N) - 10/17/11	3,250,317	15	16	4,784,201	98,306	1,202,768	1,887,302	825	1,050	2,386,255	39	48	561,705	1,130,353	83,722	3,477,867	124	148	695,724	72,396,288	2.87
10/29/2011	52,206,644	1371 (\$2, N) - 10/24/11	3,302,201	17	18	4,685,786	95,887	1,186,987	2,055,399	1,300	1,550	2,592,752	57	67	596,631	1,107,441	82,921	4,895,300	173	203	903,261	73,711,209	2.92
11/5/2011	56,265,310	1373 (\$10, N) - 10/31/11	3,570,825	19	20	5,165,835	105,793	1,240,514	910,036	200	200	2,497,308	78	12	583,481	1,222,706	92,619	4,617,172	245	20	863,799	77,135,396	3.06
11/12/2011	55,682,645	1375 (\$3, N); 1374 (\$1, N) - 11/07/11	3,673,137	21	22	5,298,645	109,575	1,268,630	961,349	225	200	2,362,698	15	22	552,133	1,235,272	92,025	1,861,697	25	35	447,243	73,545,049	2.92
11/19/2011	54,978,079	1376(\$2, N); 1377 (\$5, N) - 11/14/11	3,575,231	23	24	5,216,095	106,956	1,246,366	1,059,355	225	325	2,300,050	30	40	550,825	1,224,365	89,978	2,033,222	46	60	477,542	72,858,064	2.89
11/26/2011	53,942,448	1372 (\$5, N) - 11/21/11	3,499,908	25	26	4,943,420	100,352	1,179,174	998,175	500	200	2,377,399	47	55	555,760	1,215,090	90,416	1,527,546	20	25	389,905	70,819,593	2.81
12/3/2011	57,153,469	0	3,744,456	27	28	5,267,602	108,544	1,264,649	938,225	225	200	2,830,996	64	75	636,924	1,278,857	95,379	1,708,763	31	40	424,242	75,452,105	2.99
12/10/2011	55,318,284	1378 (\$1, N); 1322 (\$5, N) - 12/5/11; 1389 (\$1, N) - 12/6/11	3,666,072	29	30	5,168,509	106,265	1,243,957	1,030,979	225	325	3,462,326	87	100	736,281	1,235,834	89,131	1,850,570	52	67	443,403	74,351,610	2.95
12/17/2011	58,612,629	1383 (\$3,N) - 12/12/11	2,963,151	4	5	5,096,413	103,606	1,257,263	1,339,991	475	650	4,412,520	116	135	882,759	1,240,640	89,229	2,163,468	78	91	496,239	78,657,908	3.12
12/24/2011	60,628,256	1379 (\$1, N); 1317 (\$2, N); 1380 (\$5, N) - 12/19/11	3,265,301	6	7	5,257,800	105,568	1,269,335	943,509	200	225	5,729,832	152	173	1,095,360	1,263,815	88,757	2,933,837	104	125	619,872	83,201,242	3.30
12/31/2011	63,065,007	0	3,368,593	8	9	5,211,663	107,395	1,275,257	1,200,536	325	450	4,358,985	206	12	878,865	1,244,035	88,079	1,788,226	20	25	426,888	83,013,528	3.29
1/7/2012	60,479,896	1381 (\$5,N); 1277 (\$50,N) - 1/3/12; 1429 (\$5,N); 1401 (\$10, N) - 1/4/12	3,193,532	10	11	5,246,112	108,060	1,281,653	1,135,472	625	200	2,298,815	15	25	550,191	1,240,736	90,116	1,763,484	30	44	423,718	77,811,784	3.09
1/14/2012	57,689,526	1382 (\$2,N); 1232 (\$10, N) - 1/9/12	3,259,338	12	13	5,061,130	103,687	1,270,289	1,059,875	225	350	2,542,675	33	42	587,013	1,229,792	87,637	1,921,683	54	66	445,614	75,258,258	2.98
1/21/2012	58,704,854	1384 (\$1, N); 1385 (\$5,N) - 1/16/12	3,310,397	14	15	5,033,947	104,874	1,252,621	1,422,729	500	650	2,696,266	50	60	594,142	1,204,955	88,136	3,611,989	80	100	566,485	78,591,394	3.12
1/28/2012	57,611,325	0	3,295,592	16	17	4,996,799	103,779	1,241,568	1,940,577	875	1,100	2,426,609	71	12	544,967	1,197,885	85,833	4,311,550	120	146	496,540	78,253,022	3.10
2/4/2012	65,553,366	1434 (\$2, N); 1142 (\$20, N) - 01/30/12	3,526,781	18	19	5,493,300	112,992	1,316,899	2,230,312	1,350	1,650	2,212,907	15	23	525,610	1,315,424	96,711	6,186,774	170	200	672,146	89,243,221	3.54
2/11/2012	75,070,485	1361 (\$5, N); 1362 (\$1, N); 1388 (\$3, N) - 02/06/12	3,569,296	20	21	5,678,360	119,455	1,321,397	983,011	200	225	2,388,865	32	41	562,554	1,332,218	97,927	10,633,290	250	325	1,675,211	103,432,068	4.10
2/18/2012	66,679,947	1433 (\$10, N) - 02/13/12	3,230,364	22	4	5,467,216	114,573	1,316,645	955,165	200	200	2,625,022	51	61	605,640	1,294,454	95,383	3,310,544	40	50	573,610	86,268,562	3.42
2/25/2012	64,868,899	1253 (\$2,N); 1431 (\$5,N) - 02/20/2012	3,046,687	5	6	5,452,765	115,785	1,312,655	980,607	225	200	2,972,219	72	83	659,936	1,283,389	92,775	3,590,429	60	70	458,143	84,834,287	3.36
3/3/2012	67,135,065	1393 (\$1,N); 1437 (\$5, N) - 02/27/2012	3,166,827	7	8	5,754,954	121,213	1,355,233	1,129,262	225	350	3,675,723	94	108	782,787	1,379,907	101,888	3,066,811	40	50	412,577	88,082,246	3.49
3/10/2012	68,299,006	1395 (\$2, N); 1396 (\$5, N); - 03/05/2012; 1349 (\$10, N) - 03/08/2012	3,239,012	9	10	5,637,055	121,996	1,342,258	1,564,625	525	700	4,549,049	127	148	919,907	1,359,810	98,371	2,927,846	60	40	392,711	90,451,645	3.59

Texas Lottery Commission - Weekly Sales Summary for FY 2012 (Unaudited)

Week Ended	Instant Games	New Games & Dates	Lotto Texas	Jackpot W S		Pick 3	Pick 3 Sum It Up	Cash Five	Texas Two Step	Jackpot M TH		Mega Millions	Jackpot T F		Megaplier	Daily 4	Daily 4 Sum It Up	Powerball	Jackpot W S		Power Play	Total	Per Cap.
3/17/2012	65,013,692	0	3,238,467	11	12	5,355,241	111,158	1,304,908	2,011,205	925	1,150	5,753,985	171	200	1,113,018	1,281,976	92,281	2,718,408	50	60	371,071	88,365,410	3.50
3/24/2012	64,035,255	1397 (\$1,N); 1398 (\$5,N); - 03/19/2012; 1428 (\$2,N) - 03/22/2012	3,279,433	13	14	5,362,981	113,111	1,289,990	2,213,714	1,450	1,750	9,201,212	241	290	1,604,019	1,265,996	91,545	2,634,408	70	40	360,200	91,451,864	3.63
3/31/2012	65,135,991	1417 (\$2, N); 1432 (\$5, N) - 03/26/2012	3,888,301	15	16	5,439,674	122,076	1,326,368	1,004,583	200	225	60,266,900	363	640	7,844,087	1,312,333	97,380	2,949,562	50	60	377,724	149,764,978	5.94
weekly change	1.7%		18.6%			1.4%	7.9%	2.8%	-54.6%			555.0%			389.0%	3.7%	6.4%	12.0%			4.9%	63.8%	
	SALES		SALES			SALES	SALES	SALES	SALES			SALES			SALES	SALES	SALES	SALES			SALES	SALES	% of Sales
Startup to date	43,664,374,051		11,010,194,848			4,285,804,909	26,574,958	2,359,384,614	616,966,574			1,642,406,041			368,716,879	238,566,175	25,733,241	248,022,387			52,696,647	64,747,565,294	100.0%
Calendar Year to date	836,277,307		43,244,027			69,979,530	1,472,756	16,932,484	18,631,137			103,610,247			16,893,871	16,698,872	1,215,979	49,626,778			7,225,750	1,181,808,737	100.0%
Fiscal Year to date 2012	1,789,015,849		102,188,789			158,444,588	3,271,626	38,475,953	39,122,107			156,974,316			28,581,708	37,563,487	2,763,801	91,630,503			16,433,302	2,464,466,027	100.0%