



WEEKLY SALES SUMMARY

Unaudited

Week Ending: 4/01/2017

Texas Lottery Commission
Fiscal Year to Date Sales Comparison
Unaudited

Through the Week Ending 4/01/2017 (31 Weeks)

Sales by Game	FY 2015 *	FY 2016 **	FY 2017	\$ Change		% Change	
				FY 2017 to FY 2015	FY 2017 to FY 2016	FY 2017 to FY 2015	FY 2017 to FY 2016
Scratch Tickets	\$ 2,058,044,143	\$ 2,189,162,503	\$ 2,271,321,525	\$ 213,277,382	\$ 82,159,022	10.4%	3.8%
Lotto Texas	73,476,556	75,320,490	67,903,772	-5,572,784	-7,416,718	-7.6%	-9.8%
Lotto Extra	11,320,979	13,028,879	13,182,829	1,861,850	153,950	16.4%	1.2%
Pick 3	150,158,981	151,337,101	147,165,761	-2,993,220	-4,171,340	-2.0%	-2.8%
Pick 3 Sum It Up	2,978,553	3,099,127	2,812,670	-165,883	-286,457	-5.6%	-9.2%
Cash Five	30,003,174	27,753,470	25,834,808	-4,168,366	-1,918,662	-13.9%	-6.9%
Texas Two Step	31,306,084	31,469,940	32,944,431	1,638,347	1,474,491	5.2%	4.7%
Mega Millions	92,734,358	75,038,422	67,771,130	-24,963,228	-7,267,292	-26.9%	-9.7%
Megaplier	21,489,703	19,013,460	18,294,494	-3,195,209	-718,966	-14.9%	-3.8%
Daily 4	51,497,140	53,334,526	55,303,579	3,806,440	1,969,053	7.4%	3.7%
Daily 4 Sum It Up	3,020,315	2,811,298	2,991,851	-28,464	180,553	-0.9%	6.4%
Powerball	141,897,155	336,011,287	138,890,165	-3,006,990	-197,121,122	-2.1%	-58.7%
Power Play	17,306,365	36,749,572	19,519,468	2,213,103	-17,230,104	12.8%	-46.9%
All or Nothing	23,259,094	18,655,700	16,968,784	-6,290,310	-1,686,916	-27.0%	-9.0%
Monopoly	1 2,656,370	-	-	-2,656,370	-	-100.0%	-
Texas Triple Chance	-	15,632,996	8,915,402	8,915,402	-6,717,594	-	-43.0%
Total	\$ 2,711,148,969	\$ 3,048,418,771	\$ 2,889,820,669	\$ 178,671,701	\$ -158,598,102	6.6%	-5.2%

* 3 extra days

** 2 extra days

1 Monopoly sales were suspended after draw on 12/12/14

Texas Lottery Commission
Fiscal Year to Date Cumulative Average Sales Comparison
Unaudited

Through the Week Ending 4/01/2017 (31 Weeks)

Sales by Game	FY 2015	FY 2016	FY 2017
Scratch Tickets	\$ 9,527,982	\$ 10,182,151	\$ 10,663,481
Lotto Texas	340,169	350,328	318,797
Lotto Extra	52,412	60,599	61,891
Pick 3	695,180	703,893	690,919
Pick 3 Sum It Up	13,790	14,415	13,205
Cash Five	138,904	129,086	121,290
Texas Two Step	144,936	146,372	154,669
Mega Millions	429,326	349,016	318,174
Megaplier	99,489	88,435	85,890
Daily 4	238,413	248,068	259,641
Daily 4 Sum It Up	13,983	13,076	14,046
Powerball	656,931	1,562,843	652,067
Power Play	80,122	170,928	91,641
All or Nothing	107,681	86,771	79,666
Monopoly	** 48,298	-	-
Texas Triple Chance	- *	82,714	41,856
Total	\$ <u>12,587,615</u>	\$ <u>14,188,695</u>	\$ <u>13,567,233</u>

thru 4/04/2015

216 days

**

55 days

*

thru 4/02/2016

215 days

189 days

thru 4/01/2017

213 days

Texas Lottery Commission
Fiscal Year Over Year Change in Sales
Unaudited
FY 2017 Compared to FY 2016

			SCRATCH TICKETS				DRAW GAMES				TOTAL SALES			
FY 2017			% change -				% change -				% change -			
Week	Week	Ending	FY 2017	FY 2016	Difference	Cumulative Sales	FY 2017	FY 2016	Difference	Cumulative Sales	FY 2017	FY 2016	Difference	Cumulative Sales
1	9/3/2016 *		\$32,980,266	\$49,534,249	(\$16,553,983)	-33.4%	\$10,218,656	\$17,091,724	(\$6,873,068)	-40.2%	\$43,198,922	\$66,625,973	(\$23,427,051)	-35.2%
2	9/10/2016		\$65,952,418	\$61,566,291	\$4,386,127	7.1%	\$19,635,377	\$20,630,922	(\$995,545)	-4.8%	\$85,587,795	\$82,197,213	\$3,390,583	4.1%
3	9/17/2016		\$66,196,270	\$63,530,657	\$2,665,613	4.2%	\$20,915,290	\$20,327,253	\$588,037	2.9%	\$87,111,560	\$83,857,910	\$3,253,650	3.9%
4	9/24/2016		\$64,383,005	\$61,731,400	\$2,651,605	4.3%	\$17,451,165	\$22,252,290	(\$4,801,125)	-21.6%	\$81,834,170	\$83,983,690	(\$2,149,520)	-2.6%
5	10/1/2016		\$67,349,951	\$67,048,415	\$301,536	0.4%	\$17,519,852	\$25,436,791	(\$7,916,939)	-31.1%	\$84,869,803	\$92,485,206	(\$7,615,403)	-8.2%
6	10/8/2016		\$71,598,690	\$66,049,706	\$5,548,984	8.4%	\$18,211,107	\$18,138,977	\$72,130	0.4%	\$89,809,797	\$84,188,683	\$5,621,114	6.7%
7	10/15/2016		\$69,444,762	\$65,073,593	\$4,371,169	6.7%	\$18,075,261	\$17,776,414	\$298,847	1.7%	\$87,520,023	\$82,850,007	\$4,670,016	5.6%
8	10/22/2016		\$69,317,066	\$64,087,437	\$5,229,629	8.2%	\$18,422,336	\$18,450,464	(\$28,128)	-0.2%	\$87,739,402	\$82,537,901	\$5,201,501	6.3%
9	10/29/2016		\$69,729,599	\$66,025,374	\$3,704,225	5.6%	\$18,535,248	\$19,568,150	(\$1,032,902)	-5.3%	\$88,264,847	\$85,593,524	\$2,671,324	3.1%
10	11/5/2016		\$73,451,702	\$68,137,192	\$5,314,510	7.8%	\$20,151,939	\$20,398,351	(\$246,413)	-1.2%	\$93,603,641	\$88,535,543	\$5,068,098	5.7%
11	11/12/2016		\$70,998,320	\$65,449,428	\$5,548,892	8.5%	\$19,925,460	\$20,169,382	(\$243,923)	-1.2%	\$90,923,780	\$85,618,810	\$5,304,970	6.2%
12	11/19/2016		\$75,265,196	\$68,364,421	\$6,900,775	10.1%	\$21,424,637	\$17,174,606	\$4,250,031	24.7%	\$96,689,833	\$85,539,027	\$11,150,806	13.0%
13	11/26/2016		\$68,983,157	\$61,091,628	\$7,891,529	12.9%	\$24,223,331	\$17,168,993	\$7,054,338	41.1%	\$93,206,488	\$78,260,621	\$14,945,867	19.1%
14	12/3/2016		\$72,688,514	\$67,830,827	\$4,857,687	7.2%	\$17,653,328	\$19,252,418	(\$1,599,090)	-8.3%	\$90,341,842	\$87,083,245	\$3,258,597	3.7%
15	12/10/2016		\$71,676,549	\$68,324,452	\$3,352,097	4.9%	\$18,150,590	\$19,529,408	(\$1,378,819)	-7.1%	\$89,827,139	\$87,853,860	\$1,973,279	2.2%
16	12/17/2016		\$73,909,726	\$71,041,258	\$2,868,468	4.0%	\$19,814,333	\$20,824,840	(\$1,010,507)	-4.9%	\$93,724,059	\$91,866,098	\$1,857,962	2.0%
17	12/24/2016		\$77,369,179	\$78,125,965	(\$756,786)	-1.0%	\$19,276,415	\$22,586,417	(\$3,310,002)	-14.7%	\$96,645,594	\$100,712,382	(\$4,066,788)	-4.0%
18	12/31/2016		\$80,868,854	\$76,712,975	\$4,155,879	5.4%	\$19,289,161	\$27,972,880	(\$8,683,720)	-31.0%	\$100,158,015	\$104,685,855	(\$4,527,841)	-4.3%
19	1/7/2017		\$73,328,624	\$77,136,541	(\$3,807,917)	-4.9%	\$18,611,644	\$127,289,478	(\$108,677,835)	-85.4%	\$91,940,268	\$204,426,019	(\$112,485,752)	-55.0%
20	1/14/2017		\$73,471,643	\$73,858,865	(\$387,222)	-0.5%	\$20,351,397	\$140,104,126	(\$119,752,729)	-85.5%	\$93,823,040	\$213,962,991	(\$120,139,951)	-56.1%
21	1/21/2017		\$72,229,342	\$70,665,700	\$1,563,642	2.2%	\$20,349,310	\$20,781,745	(\$432,435)	-2.1%	\$92,578,652	\$91,447,445	\$1,131,208	1.2%
22	1/28/2017		\$72,056,793	\$71,051,685	\$1,005,108	1.4%	\$21,668,657	\$20,433,401	\$1,235,257	6.0%	\$93,725,450	\$91,485,086	\$2,240,365	2.4%
23	2/4/2017		\$77,292,806	\$78,458,428	(\$1,165,622)	-1.5%	\$22,161,789	\$21,274,800	\$886,989	4.2%	\$99,454,595	\$99,733,228	(\$278,634)	-0.3%
24	2/11/2017		\$78,699,192	\$80,754,850	(\$2,055,658)	-2.5%	\$22,100,245	\$21,391,919	\$708,326	3.3%	\$100,799,437	\$102,146,769	(\$1,347,332)	-1.3%
25	2/18/2017		\$77,864,124	\$80,078,271	(\$2,214,147)	-2.8%	\$24,776,465	\$21,911,382	\$2,865,083	13.1%	\$102,640,589	\$101,989,653	\$650,936	0.6%
26	2/25/2017		\$80,287,015	\$78,832,217	\$1,454,798	1.8%	\$28,133,116	\$22,823,086	\$5,310,031	23.3%	\$108,420,131	\$101,655,303	\$6,764,829	6.7%
27	3/4/2017		\$87,500,184	\$80,019,524	\$7,480,660	9.3%	\$20,213,859	\$23,146,906	(\$2,933,047)	-12.7%	\$107,714,043	\$103,166,430	\$4,547,613	4.4%
28	3/11/2017		\$84,966,053	\$78,524,214	\$6,441,839	8.2%	\$21,024,757	\$19,311,625	\$1,713,132	8.9%	\$105,990,810	\$97,835,839	\$8,154,971	8.3%
29	3/18/2017		\$82,972,977	\$75,446,960	\$7,526,017	10.0%	\$20,434,291	\$18,001,000	\$2,433,292	13.5%	\$103,407,268	\$93,447,960	\$9,959,309	10.7%
30	3/25/2017		\$82,217,628	\$75,293,759	\$6,923,869	9.2%	\$20,282,992	\$18,553,964	\$1,729,028	9.3%	\$102,500,620	\$93,847,723	\$8,652,897	9.2%
31	4/1/2017		\$86,271,920	\$79,316,221	\$6,955,699	8.8%	\$19,497,142	\$19,482,563	\$14,580	0.1%	\$105,769,062	\$98,798,784	\$6,970,279	7.1%
32	4/8/2017			\$74,560,898				\$20,100,629				\$94,661,527		
33	4/15/2017			\$74,056,586				\$20,677,413				\$94,733,999		
34	4/22/2017			\$73,110,080				\$20,313,339				\$93,423,419		
35	4/29/2017			\$73,448,019				\$22,666,626				\$96,114,645		
36	5/6/2017			\$77,593,399				\$33,262,968				\$110,856,367		
37	5/13/2017			\$75,263,676				\$20,250,149				\$95,513,825		
38	5/20/2017			\$74,274,808				\$19,605,983				\$93,880,791		
39	5/27/2017			\$71,562,728				\$20,150,232				\$91,712,960		
40	6/3/2017			\$73,085,109				\$21,067,550				\$94,152,659		
41	6/10/2017			\$70,593,768				\$21,389,794				\$91,983,562		
42	6/17/2017			\$69,501,864				\$22,402,713				\$91,904,577		

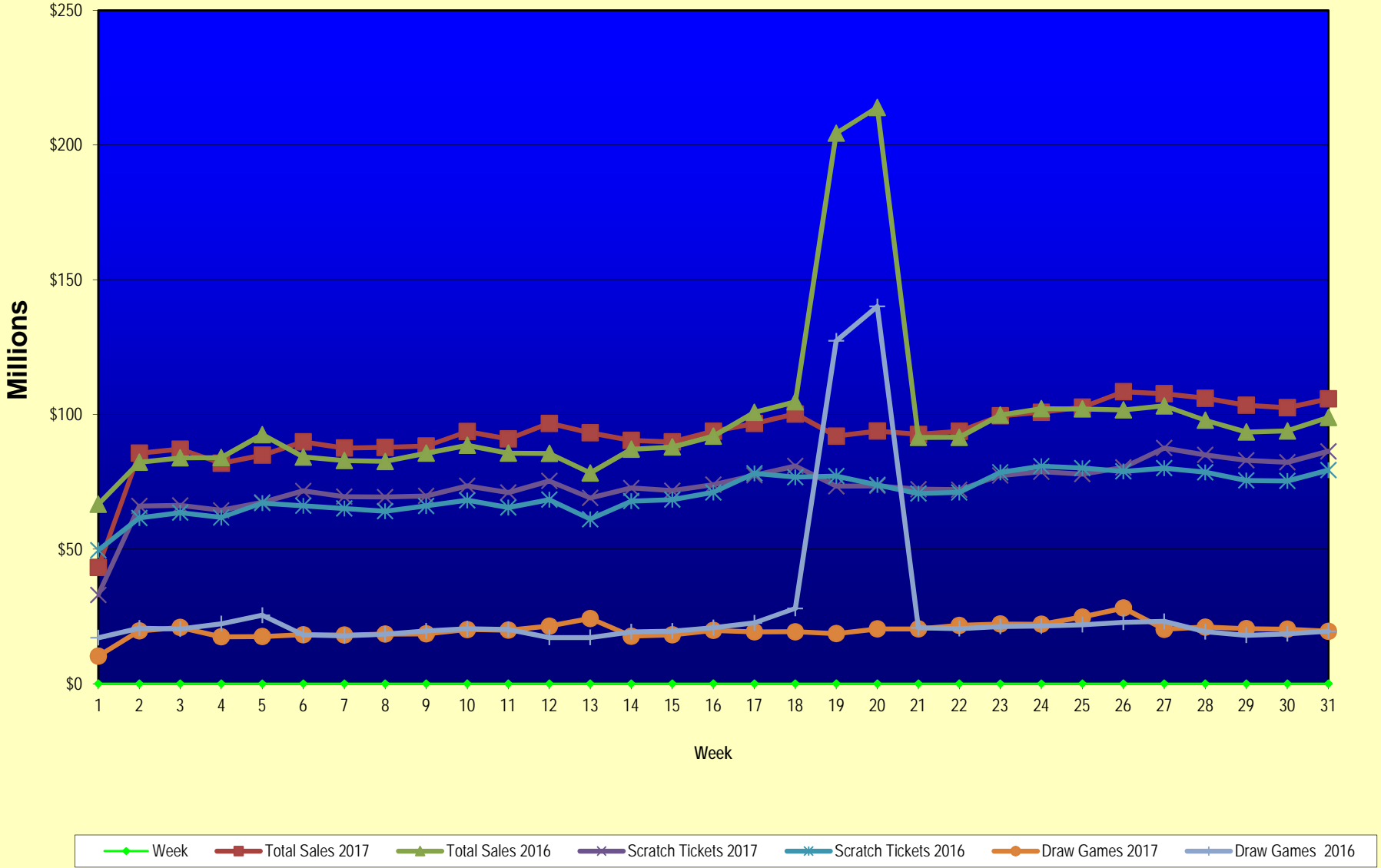
Texas Lottery Commission
Fiscal Year Over Year Change in Sales
Unaudited
FY 2017 Compared to FY 2016

			SCRATCH TICKETS				DRAW GAMES				TOTAL SALES			
FY 2017			FY 2017	FY 2016	Difference	% change - Cumulative Sales	FY 2017	FY 2016	Difference	% change - Cumulative Sales	FY 2017	FY 2016	Difference	% change - Cumulative Sales
Week	Week	Ending												
43	6/24/2017			\$69,243,660				\$24,290,311				\$93,533,971		
44	7/1/2017			\$70,782,313				\$29,331,406				\$100,113,719		
45	7/8/2017			\$67,636,625				\$38,673,314				\$106,309,939		
46	7/15/2017			\$68,064,720				\$21,311,938				\$89,376,658		
47	7/22/2017			\$69,509,821				\$21,982,689				\$91,492,510		
48	7/29/2017			\$64,486,970				\$30,699,953				\$95,186,923		
49	8/5/2017			\$69,206,183				\$18,277,075				\$87,483,258		
50	8/12/2017			\$67,165,060				\$18,101,640				\$85,266,700		
51	8/19/2017			\$69,067,938				\$18,981,681				\$88,049,619		
52	8/26/2017			\$67,821,162				\$19,606,571				\$87,427,733		
	8/31/2017 **			\$36,609,542				\$9,310,254				\$45,919,796		
Total thru Current Week			\$2,271,321,525	\$2,189,162,503	\$82,159,022	3.8%	\$618,499,144	\$859,256,268	(\$240,757,124)	-28.0%	\$2,889,820,669	\$3,048,418,771	(\$158,598,102)	-5.2%
Fiscal Year Total			\$2,271,321,525	\$3,715,807,432			\$618,499,144	\$1,351,710,491			\$2,889,820,669	\$5,067,517,923		

* FY 17 includes 3 days; FY 16 includes 5 days

** FY 17 includes 5 days; FY 16 includes 4 days

Texas Lottery Commission Fiscal Year Over Year Change in Sales



Note: Week 1 is not a full week of sales as this report is prepared on a Fiscal Year basis.

Texas Lottery Commission
Scratch Tickets by Price Point
Sales, Prize Expense, Sales Contribution and Payout Percentage With Year Over Year Changes
Unaudited

Fiscal Year	Price Point	# of Active Games	FY Sales	% of Scratch Ticket Sales	Year over Year Change in Sales	FY Prize Expense	Year over Year Change in Prize Expense	FY Sales Contribution	Year over Year Change in Contribution	Average Prize Payout %	Year over Year Change in Payout %
2016	\$1.00	17	99,132,948	4.5%		59,742,573		39,390,375		60.3%	-0.4%
Through	\$2.00	30	224,026,692	10.2%		145,791,979		78,234,713		65.1%	-0.6%
4/2/2016	\$3.00	12	166,815,618	7.6%		109,859,407		56,956,211		65.9%	-0.1%
	\$5.00	50	726,740,255	33.2%		493,752,744		232,987,511		67.9%	0.0%
	\$10.00	17	426,326,410	19.5%		298,889,190		127,437,220		70.1%	-0.2%
	\$20.00	11	442,977,480	20.2%		332,010,716		110,966,764		74.9%	0.0%
	\$50.00	3	103,143,100	4.7%		80,219,471		22,923,629		77.8%	0.0%
Total		140	\$2,189,162,503			\$1,520,266,081		\$668,896,422		69.4%	0.0%
2017	\$1.00	21	89,422,345	3.9%		53,930,211		35,492,134		60.3%	0.1%
Through	\$2.00	25	193,562,384	8.5%		126,022,687		67,539,697		65.1%	-0.1%
4/1/2017	\$3.00	11	156,819,396	6.9%		103,399,710		53,419,686		65.9%	0.1%
	\$5.00	50	728,365,800	32.1%		494,948,101		233,417,699		68.0%	0.0%
	\$10.00	19	499,190,800	22.0%		351,348,360		147,842,440		70.4%	0.3%
	\$20.00	13	490,600,300	21.6%		367,632,847		122,967,454		74.9%	0.0%
	\$50.00	4	113,360,500	5.0%		88,205,325		25,155,175		77.8%	0.0%
Total		143	\$2,271,321,525			\$1,585,487,241		\$685,834,284		69.8%	0.4%
Variance	\$1.00	4	-9,710,603		-9.8%	-5,812,361	-9.7%	-3,898,242	-9.9%	0.04%	
2017 to	\$2.00	-5	-30,464,308		-13.6%	-19,769,293	-13.6%	-10,695,015	-13.7%	0.03%	
2016	\$3.00	-1	-9,996,222		-6.0%	-6,459,697	-5.9%	-3,536,525	-6.2%	0.08%	
	\$5.00	0	1,625,545		0.2%	1,195,357	0.2%	430,188	0.2%	0.01%	
	\$10.00	2	72,864,390		17.1%	52,459,170	17.6%	20,405,220	16.0%	0.28%	
	\$20.00	2	47,622,820		10.8%	35,622,130	10.7%	12,000,690	10.8%	-0.01%	
	\$50.00	1	10,217,400		9.9%	7,985,854	10.0%	2,231,546	9.7%	0.03%	
Total		3	\$82,159,022		3.8%	\$65,221,160	4.3%	\$16,937,862	2.5%	0.36%	

Notes - Scratch Ticket Variances

Texas Lottery Commission
Scratch Tickets by Price Point
Sales, Prize Expense, Sales Contribution and Payout Percentage With Year Over Year Changes
Unaudited

			FY 2017		FY 2016	Difference
Sales	\$1 - \$5		\$1,168,169,925		\$1,216,715,513	-\$48,545,588
Prize Exp.	\$1 - \$5		\$778,300,709		\$809,146,703	-\$30,845,994
Sales Cont.	\$1 - \$5		\$389,869,216		\$407,568,810	-\$17,699,594
Prize Exp. %	\$1 - \$5		66.6%		66.5%	0.1%
			FY 2017		FY 2016	Difference
Sales	\$10 - \$50		\$1,103,151,600		\$972,446,990	\$130,704,610
Prize Exp.	\$10 - \$50		\$807,186,532		\$711,119,378	\$96,067,154
Sales Cont.	\$10 - \$50		\$295,965,068		\$261,327,612	\$34,637,456
Prize Exp. %	\$10 - \$50		73.2%		73.1%	0.0%
			FY 2017		FY 2016	Difference
Sales	Scratch		\$2,271,321,525		\$2,189,162,503	\$82,159,022
Prize Exp.	Scratch		\$1,585,487,241		\$1,520,266,081	\$65,221,160
Sales Cont.	Scratch		\$685,834,284		\$668,896,422	\$16,937,862
Prize Exp. %	Scratch		69.8%		69.4%	0.4%

			FY 2017		FY 2016	Difference
Sales	\$1 - \$10		\$1,667,360,725		\$1,643,041,923	\$24,318,802
Prize Exp.	\$1 - \$10		\$1,129,649,069		\$1,108,035,893	\$21,613,176
Sales Cont.	\$1 - \$10		\$537,711,656		\$535,006,030	\$2,705,626
Prize Exp. %	\$1 - \$10		67.8%		67.4%	0.3%
			FY 2017		FY 2016	Difference
Sales	\$20 - \$50		\$603,960,800		\$546,120,580	\$57,840,220
Prize Exp.	\$20 - \$50		\$455,838,171		\$412,230,187	\$43,607,984
Sales Cont.	\$20 - \$50		\$148,122,629		\$133,890,393	\$14,232,236
Prize Exp. %	\$20 - \$50		75.5%		75.5%	0.0%
			FY 2017		FY 2016	Difference
Sales	Scratch		\$2,271,321,525		\$2,189,162,503	\$82,159,022
Prize Exp.	Scratch		\$1,585,487,241		\$1,520,266,081	\$65,221,160
Sales Cont.	Scratch		\$685,834,284		\$668,896,422	\$16,937,862
Prize Exp. %	Scratch		69.8%		69.4%	0.4%

Texas Lottery Commission
Weekly Sales Summary
& Comparison to Previous Week
 Unaudited

	Week Ending 4/01/2017		Week Ending 3/25/2017			
	<u>THIS WEEK</u>	% of Sales	<u>LAST WEEK</u>	% of Sales	<u>\$ change</u>	<u>% change</u>
Total Sales	<u>\$105,769,062</u>		<u>\$102,500,620</u>		<u>\$3,268,443</u>	3.19%
Scratch Tickets	<u>\$86,271,920</u>	81.6%	<u>\$82,217,628</u>	80.2%	<u>\$4,054,292</u>	4.93%
Lotto	\$2,020,314	1.9%	\$2,602,050	2.5%	-\$581,736	-22.36%
Lotto Extra	\$408,799	0.4%	\$516,731	0.5%	-\$107,932	-20.89%
Pick 3	\$5,070,719	4.8%	\$5,013,110	4.9%	\$57,609	1.15%
Pick 3 Sum It Up	\$101,350	0.1%	\$100,086	0.1%	\$1,264	1.26%
Cash Five	\$863,130	0.8%	\$846,048	0.8%	\$17,082	2.02%
Texas Two Step	\$886,811	0.8%	\$856,270	0.8%	\$30,541	3.57%
Mega Millions	\$3,145,112	3.0%	\$2,824,549	2.8%	\$320,563	11.35%
Megaplier	\$818,473	0.8%	\$736,397	0.7%	\$82,076	11.15%
Daily 4	\$1,853,296	1.8%	\$1,805,723	1.8%	\$47,573	2.63%
Daily 4 Sum It Up	\$97,814	0.1%	\$95,407	0.1%	\$2,407	2.52%
Powerball	\$2,918,488	2.8%	\$3,520,114	3.4%	-\$601,626	-17.09%
Power Play	\$468,058	0.4%	\$542,539	0.5%	-\$74,481	-13.73%
All or Nothing	\$573,072	0.5%	\$555,218	0.5%	\$17,854	3.22%
Texas Triple Chance	\$271,708	0.3%	\$268,750	0.3%	\$2,958	1.10%
Total Draw Game Sales	<u>\$19,497,142</u>		<u>\$20,282,992</u>		<u>-\$785,850</u>	-3.87%

* Totals may not sum due to rounding.

Texas Lottery Commission
Weekly Sales Summary
Unaudited

SCRATCH TICKETS
TOP TEN SELLING GAMES

For the week ending: 4/01/2017

Rank	Price Point	Game	Sales (Millions)
1	\$ 10	WILLY WONKA GOLDEN TICKET	\$ 7.076
2	\$ 20	100X THE CASH	\$ 5.155
3	\$ 10	MEGA LOTERIA	\$ 4.943
4	\$ 20	MONEY	\$ 4.754
5	\$ 10	50X THE CASH	\$ 4.271
6	\$ 5	SUPER LOTERIA	\$ 3.773
7	\$ 10	CASHWORD MULTIPLIER	\$ 3.671
8	\$ 5	CASH FORTUNE	\$ 3.196
9	\$ 50	\$7,500,000 ULTIMATE CASH	\$ 3.039
10	\$ 5	LUCKY NO. 7	\$ 2.880

Texas Lottery Commission
Prize Payout Tracking Report
Unaudited

Through the week ending: 4/01/2017

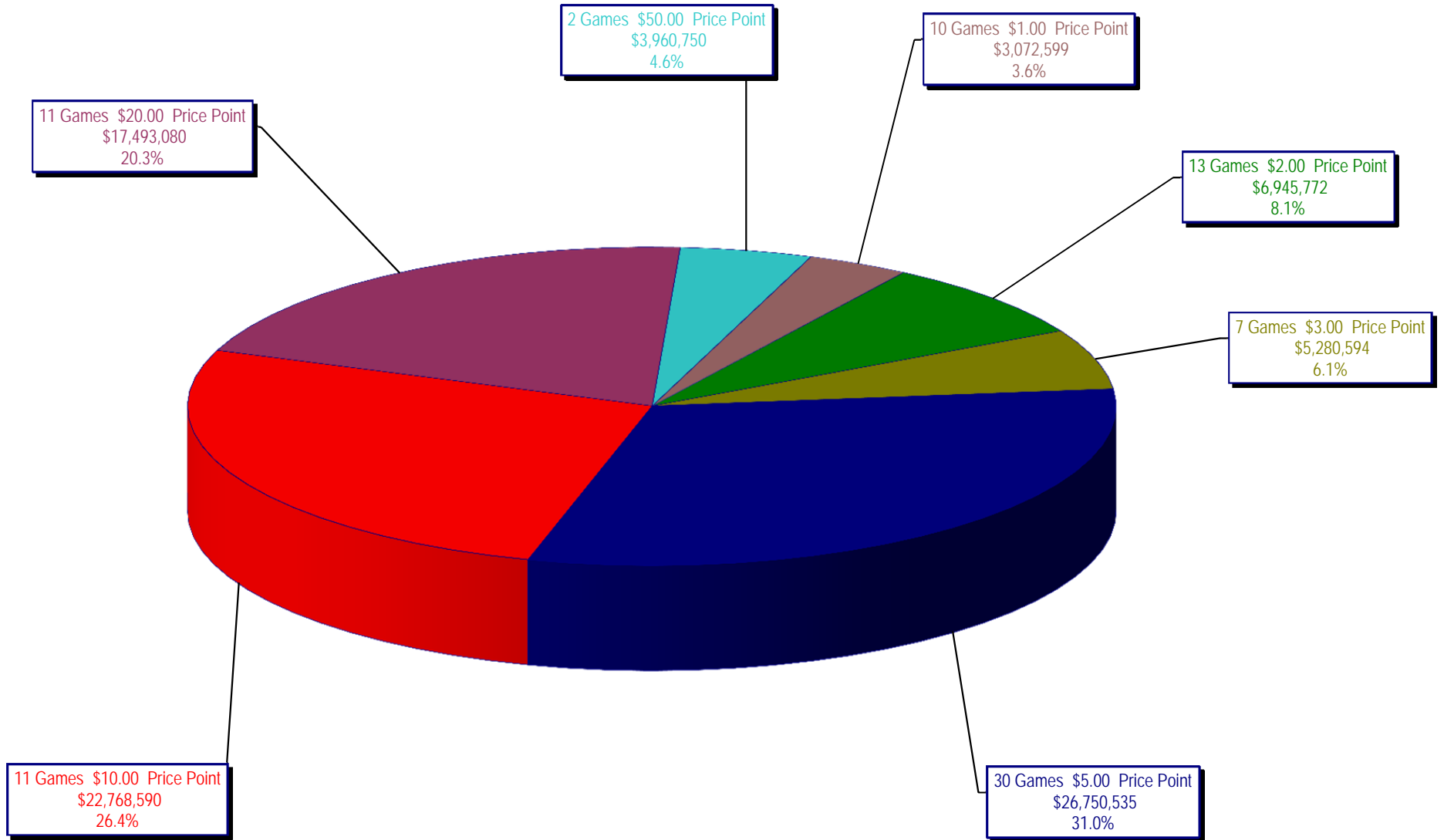
Draw Game Sales

		FY Sales Through Week Ending 4/1/2017		FY Prize Expense Through Week Ending 4/1/2017	Actual* Prize Payout	Base Payout (Prize Pool)
Lotto	\$	67,903,772	\$	34,051,237	50.15%	50.00%
Lotto Extra		13,182,829		7,101,736	53.87%	53.70%
Pick 3		147,165,761		72,038,650	48.95%	50.00%
Pick 3 Sum It Up		2,812,670		1,226,367	43.60%	50.00%
Cash Five		25,834,808		12,917,404	50.00%	50.00%
Texas Two Step		32,944,431		16,870,519	51.21%	50.00%
Mega Millions		67,771,130		34,587,984	51.04%	50.00%**
Megaplier		18,294,494		9,152,666	50.03%	N/A
Daily 4		55,303,579		29,593,675	53.51%	50.00%
Daily 4 Sum It Up		2,991,851		2,777,796	92.85%	50.00%
Powerball		138,890,165		69,469,715	50.02%	50.00%**
Power Play		19,519,468		9,764,594	50.02%	N/A
All or Nothing		16,968,784		8,939,958	52.68%	55.98%
Texas Triple Chance		8,915,402		4,653,027	52.19%	54.42%
Totals	\$	618,499,144	\$	313,145,327	50.63%	

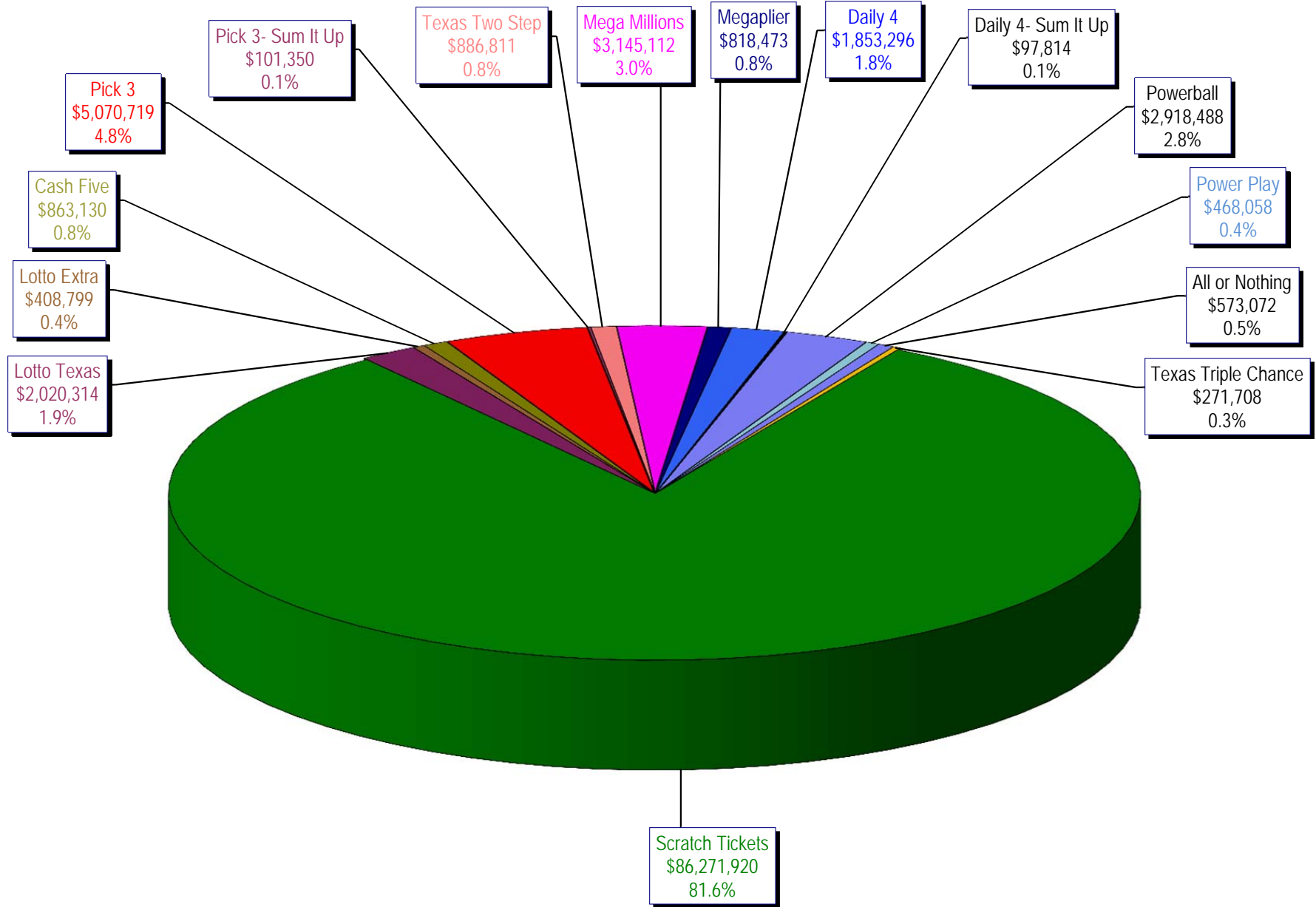
* Before Unclaimed Prizes

**Estimated; depends on # of guaranteed prizes won in Texas

Texas Lottery Commission
Scratch Ticket Sales
For the week ending 4/01/2017
(Unaudited)



Texas Lottery Commission
All Game Sales
For the week ending 4/01/2017
(Unaudited)



Texas Lottery Commission - Weekly Sales Summary for FY 2017 (Unaudited)

Week Ended	Scratch Tickets	New Games & Dates	Lotto Texas	Jackpot W S	Lotto Extra	Pick 3	Pick 3 Sum It Up	Cash Five	Texas Two Step	Jackpot M TH	Mega Millions	Jackpot T F	Megaplier	Daily 4	Daily 4 Sum It Up	Powerball	Jackpot W S	Power Play	All or Nothing	Texas Triple Chance	Total	Per Cap.
9/3/2016*	69,589,808	0	2,106,552	8.75 9.25	402,665	4,798,985	92,214	843,135	810,947	200 200	2,331,141	84 92	631,299	1,788,614	96,398	4,189,234	154 170	603,430	528,102	306,194	89,118,717	3.24
9/10/2016	65,952,418	1810 (\$1.N); 1809 (\$1.N); 1811 (\$5.N) - 9/06/16	2,095,828	9.75 10.25	399,944	4,590,651	86,697	818,614	862,148	225 275	2,490,552	101 111	655,066	1,647,119	87,455	4,473,836	186 205	628,810	506,718	291,940	85,587,795	3.12
9/17/2016	66,196,270	0	2,127,440	11 11.75	405,936	4,553,039	86,110	822,240	1,180,444	400 550	2,661,252	122 133	692,583	1,705,629	91,610	5,096,928	222 244	696,626	503,466	291,988	87,111,560	3.17
9/24/2016	64,383,005	1793 (\$2.N); 1782 (\$5.N); 1781 (\$10.N) - 9/19/16	2,141,721	12.25 13	404,127	4,551,066	83,958	811,604	1,465,789	700 900	1,733,288	15 20	489,347	1,680,793	90,386	2,790,676	40 50	429,512	503,041	275,858	81,834,170	2.98
10/1/2016	67,349,951	0	2,203,652	13.25 14	414,603	4,642,047	91,016	857,979	816,836	200 225	1,840,801	25 30	515,384	1,688,464	88,184	2,960,772	60 70	455,619	589,964	354,532	84,869,803	3.09
10/8/2016	71,598,690	1772 (\$1.N); 1770 (\$2.N); 1813 (\$5.N); 1779 (\$20.N) - 10/03/16	2,211,941	14.5 15.5	419,062	4,900,537	94,965	867,520	849,234	200 225	1,925,289	35 41	540,723	1,780,544	92,908	3,109,092	80 91	471,027	611,898	336,368	89,809,797	3.27
10/15/2016	69,444,762	0	2,207,002	16 16.75	416,802	4,549,017	89,171	836,548	1,024,493	300 425	1,780,458	49 15	496,567	1,679,519	87,007	3,499,528	107 122	510,617	577,343	321,190	87,520,023	3.19
10/22/2016	69,317,066	1814 (\$3.N); 1815 (\$5.N); 1832 (\$50.N) - 10/16/16	2,222,089	17 18	420,632	4,457,898	84,115	836,942	1,260,293	575 750	1,714,985	20 25	482,408	1,636,471	83,009	3,800,444	136 151	542,655	564,808	315,588	87,739,402	3.19
10/29/2016	69,729,599	0	2,269,908	18.5 19.25	430,487	4,511,234	86,114	833,125	779,029	200 200	1,781,093	30 35	500,203	1,711,520	88,083	4,097,116	164 180	575,614	565,102	306,622	88,264,847	3.21
11/5/2016	73,451,702	0	2,168,782	20 5	414,167	4,996,360	97,149	859,798	796,978	200 200	1,904,765	40 47	534,014	1,913,301	100,223	4,796,408	198 217	660,205	591,246	318,544	93,603,641	3.41
11/12/2016	70,998,320	1816 (\$2.N); 1808 (\$5.N); 1817 (\$5.N); 1818 (\$10.N) - 11/07/16	1,893,513	5.25 5.5	368,470	4,642,196	89,581	833,195	869,408	225 275	1,964,313	54 65	541,639	1,741,306	90,176	5,313,351	236 258	715,597	563,280	299,436	90,923,780	3.31
11/19/2016	75,265,196	1819 (\$1.N); 1820 (\$5.N); 1869 (\$10.N) - 11/16/16	1,924,291	5.75 6	376,977	4,595,331	87,939	830,211	1,078,765	400 550	2,072,033	73 82	567,597	1,715,227	91,335	6,391,094	293 320	836,372	557,058	300,408	96,689,833	3.52
11/26/2016	68,983,157	0	1,945,264	6.25 6.5	383,703	4,472,018	83,761	795,696	737,931	200 225	1,698,370	15 20	487,160	1,649,794	84,195	9,839,524	359 403	1,235,062	527,328	283,526	93,206,488	3.39
12/3/2016	72,688,514	0	1,989,472	6.75 7	386,573	4,901,443	91,365	857,900	1,002,319	275 375	1,761,923	25 30	499,193	1,823,528	94,278	2,932,322	40 54	444,551	569,036	299,426	90,341,842	3.29
12/10/2016	71,676,549	1807 (\$5.N); 1866 (\$10.N); 1822 (\$20.N) - 12/05/16	2,006,953	7.25 7.5	388,230	4,748,391	88,668	849,940	1,337,879	525 700	1,830,451	35 43	505,981	1,812,622	88,690	3,176,570	67 85	475,269	551,930	289,016	89,827,139	3.27
12/17/2016	73,909,726	0	2,048,592	7.75 8	398,632	4,778,144	88,676	854,061	1,906,792	900 1,125	1,966,377	51 59	539,946	1,844,818	94,354	3,892,738	100 119	561,900	551,086	288,218	93,724,059	3.41
12/24/2016	77,369,179	1823 (\$2.N); 1824 (\$5.N) - 12/19/16	2,210,042	8.25 8.75	421,128	4,973,874	91,323	861,510	1,331,122	1,375 200	2,200,791	67 76	590,601	2,035,860	117,672	3,119,154	40 50	473,229	558,224	291,886	96,645,594	3.52
12/31/2016	80,868,854	0	2,282,841	9.5 10.25	440,711	4,899,905	94,021	861,849	887,304	225 275	2,362,970	85 96	630,614	2,004,547	116,201	3,351,922	60 70	506,969	555,832	293,476	100,158,015	3.65
1/7/2017	73,328,624	1825 (\$1.N); 1826 (\$5.N); 1827 (\$10.N) - 01/03/17	2,097,687	10.75 11.5	408,605	4,745,822	91,405	842,694	819,153	200 200	2,524,889	105 117	654,478	1,898,406	110,548	3,107,618	80 94	474,348	550,422	285,570	91,940,268	3.35
1/14/2017	73,471,643	0	2,225,676	12 12.5	433,448	5,078,795	95,352	857,133	949,656	225 300	2,863,206	126 137	730,587	1,930,373	112,082	3,684,764	106 121	544,661	562,100	283,564	93,823,040	3.42
1/21/2017	72,229,342	1775 (\$2.N); 1760 (\$3.N); 1863 (\$5.N); 1864 (\$5.N); 1865 (\$5.N); 1829 (\$20.N) - 01/16/17	2,187,377	13.25 14	426,689	4,773,213	89,986	839,794	1,221,317	425 575	2,924,743	150 162	731,997	1,874,302	108,260	3,809,290	135 153	558,760	531,350	272,232	92,578,652	3.37
1/28/2017	72,056,793	0	2,265,574	14.75 15.5	435,796	4,784,366	89,015	836,675	1,639,149	750 950	3,196,084	177 188	786,375	1,799,122	97,940	4,327,764	170 187	608,152	532,502	270,144	93,725,450	3.41
2/4/2017	77,292,806	0	2,340,683	16.25 17	457,065	5,065,632	97,384	859,297	1,988,757	1,200 1,450	1,807,723	15 20	506,796	1,898,166	105,468	5,456,612	206 229	741,396	557,324	279,486	99,454,595	3.62
2/11/2017	78,699,192	1752 (\$5.N); 1867 (\$10.N) - 02/06/17 1767 (\$1.N) - 02/10/17	2,353,444	17.5 18	462,141	5,105,285	98,776	867,663	880,079	200 225	1,862,092	25 30	532,045	1,890,124	108,210	6,261,114	255 285	839,953	563,628	275,692	100,799,437	3.67
2/18/2017	77,864,124	0	2,407,222	18.75 19.75	478,558	4,833,590	93,535	844,013	908,531	300 200	1,973,451	38 46	561,783	1,826,773	108,517	8,780,642	310 349	1,133,132	550,644	276,074	102,640,589	3.74

Texas Lottery Commission - Weekly Sales Summary for FY 2017 (Unaudited)

Week Ended	Scratch Tickets	New Games & Dates	Lotto Texas	Jackpot		Lotto Extra	Pick 3	Pick 3 Sum It Up	Cash Five	Texas Two Step	Jackpot		Mega Millions	Jackpot		Megaplier	Daily 4	Daily 4 Sum It Up	Powerball	Jackpot		Power Play	All or Nothing	Texas Triple Chance	Total	Per Cap.	
				W	S						M	TH		T	F					W	S						
2/25/2017	80,287,015	1876 (\$1.N); 1831 (\$5.N) - 02/20/17	2,606,244	20.25	21	520,379	4,914,612	95,213	850,348	848,140	200	225	2,219,616	55	64	617,739	1,832,600	100,683	11,293,438	403	40	1,395,663	556,882	281,560	108,420,131	3.95	
3/4/2017	87,500,184	0	2,567,325	21.75	22.5	509,409	5,330,670	101,687	893,098	1,120,981	300	425	2,321,182	73	83	641,083	2,010,651	112,173	3,217,286	53	68	511,699	590,672	285,944	107,714,043	3.92	
3/11/2017	84,966,053	1699 (\$2.N); 1868 (\$3.N); 1833 (\$5.N) - 03/06/17 1755 (\$5.N); 1853 (\$20.N) - 03/08/17	2,588,161	23.5	24.5	513,793	5,226,715	101,446	881,469	1,405,624	600	775	2,563,375	94	106	683,906	1,899,173	103,287	3,637,612	85	104	562,430	579,420	278,346	105,990,810	3.86	
3/18/2017	82,972,977	1806 (\$3.N) - 03/14/17	2,592,069	25.5	26.25	513,061	4,875,639	93,232	851,969	854,304	200	225	2,652,325	119	131	701,405	1,772,646	94,333	4,006,212	123	141	601,813	550,726	274,558	103,407,268	3.76	
3/25/2017	82,217,628	1836 (\$1.N); 1835 (\$5.N); 1834 (\$10.N) - 03/20/17	2,602,050	26.75	27.25	516,731	5,013,110	100,086	846,048	856,270	200	225	2,824,549	140	151	736,397	1,805,723	95,407	3,520,114	155	40	542,539	555,218	268,750	102,500,620	3.73	
4/1/2017	86,271,920	0	2,020,314	5	5.25	408,799	5,070,719	101,350	863,130	886,811	300	200	3,145,112	162	174	818,473	1,853,296	97,814	2,918,488	50	60	468,058	573,072	271,708	105,769,062	3.85	
weekly change	4.9%		-22.4%			-20.9%	1.1%	1.3%	2.0%	3.6%			11.3%			11.1%	2.6%	2.5%	-17.1%			-13.7%	3.2%	1.1%	3.2%		
	SALES		SALES			SALES	SALES	SALES	SALES	SALES			SALES			SALES	SALES	SALES	SALES			SALES	SALES	SALES	SALES	% of Sales	
Calendar Year to date	1,029,158,301		30,853,826			6,084,474	64,818,165	1,248,465	11,133,331	14,378,772			32,878,347			8,703,064	24,291,352	1,354,720	64,020,954			8,982,604	7,253,960	3,603,628	1,308,763,962	100.0%	
Fiscal Year to date 2017	2,271,321,525		67,903,772			13,182,829	147,165,761	2,812,670	25,834,808	32,944,431			67,771,130			18,294,494	55,303,579	2,991,851	138,890,165			19,519,468	16,968,784	8,915,402	2,889,820,669	100.0%	
*Full week includes 4 days from FY16																											