



WEEKLY SALES SUMMARY

Unaudited

Week Ending: 04/04/2009

Texas Lottery Commission
Fiscal Year to Date Sales Comparison
Unaudited

Through the week ending 04/04/2009 (31 weeks)

Sales by Game	FY 2007 *	FY 2008 **	FY 2009	\$ Change		% Change	
				FY 2009 to FY 2007	FY 2009 to FY 2008	FY 2009 to FY 2007	FY 2009 to FY 2008
Instants	\$ 1,707,577,860	\$ 1,695,565,940	\$ 1,656,075,803	\$ -51,502,057	\$ -39,490,137	-3.0%	-2.3%
Lotto Texas	151,482,712	125,847,642	114,298,288	-37,184,424	-11,549,354	-24.5%	-9.2%
Pick 3	188,080,673	172,653,844	171,494,543	-16,586,130	-1,159,301	-8.8%	-0.7%
Pick 3 Sum It Up	-	3,756,714	3,611,849	3,611,849	-144,865	-	-3.9%
Cash 5	52,815,863	46,077,179	42,719,214	-10,096,649	-3,357,965	-19.1%	-7.3%
Texas Two Step	31,535,001	26,281,930	30,900,977	-634,024	4,619,047	-2.0%	17.6%
Mega Millions	114,172,501	103,341,417	109,760,085	-4,412,417	6,418,668	-3.9%	6.2%
Megaplier	26,020,752	24,417,836	25,434,730	-586,022	1,016,894	-2.3%	4.2%
Daily 4	-	25,388,286	26,637,797	26,637,797	1,249,511	-	4.9%
Daily 4 Sum It Up	-	5,840,990	3,287,153	3,287,153	-2,553,837	-	-43.7%
Total	\$ 2,271,685,362	\$ 2,229,171,777	\$ 2,184,220,439	\$ -87,464,923	\$ -44,951,339	-3.9%	-2.0%

* 3 extra days in 2007 ** 2 extra days in 2008

Texas Lottery Commission
Fiscal Year Over Year Change in Sales
Unaudited
FY 2009 Compared to FY 2008

Week	FY 2009 Week Ending	INSTANT TICKETS				ON-LINE GAMES				TOTAL SALES			
		FY 2009	FY 2008	Difference	% change - Cumulative Sales	FY 2009	FY 2008	Difference	% change - Cumulative Sales	FY 2009	FY 2008	Difference	% change - Cumulative Sales
1	9/6/2008**	\$44,890,104	\$62,376,229	(\$17,486,125)	-28.0%	\$14,722,011	\$19,372,224	(\$4,650,213)	-24.0%	\$59,612,115	\$81,748,453	(\$22,136,338)	-27.1%
2	9/13/2008	\$46,309,551	\$52,458,866	(\$6,149,315)	-20.6%	\$13,704,860	\$16,926,163	(\$3,221,303)	-21.7%	\$60,014,411	\$69,385,029	(\$9,370,618)	-20.8%
3	9/20/2008	\$42,923,171	\$49,998,934	(\$7,075,763)	-18.6%	\$12,291,263	\$15,792,283	(\$3,501,020)	-21.8%	\$55,214,434	\$65,791,217	(\$10,576,783)	-19.4%
4	9/27/2008	\$47,042,801	\$49,894,175	(\$2,851,374)	-15.6%	\$14,222,339	\$14,800,514	(\$578,175)	-17.9%	\$61,265,140	\$64,694,689	(\$3,429,549)	-16.2%
5	10/4/2008	\$50,747,162	\$53,486,863	(\$2,739,701)	-13.5%	\$15,784,472	\$16,618,430	(\$833,958)	-15.3%	\$66,531,634	\$70,105,293	(\$3,573,659)	-14.0%
6	10/11/2008	\$49,763,789	\$50,918,020	(\$1,154,231)	-11.7%	\$15,622,498	\$15,601,410	\$21,088	-12.9%	\$65,386,287	\$66,519,430	(\$1,133,143)	-12.0%
7	10/18/2008	\$49,299,053	\$50,532,253	(\$1,233,200)	-10.5%	\$15,167,940	\$15,682,666	(\$514,726)	-11.6%	\$64,466,993	\$66,214,919	(\$1,747,926)	-10.7%
8	10/25/2008	\$49,977,581	\$50,347,450	(\$369,869)	-9.3%	\$14,525,843	\$15,586,516	(\$1,060,673)	-11.0%	\$64,503,424	\$65,933,966	(\$1,430,542)	-9.7%
9	11/1/2008	\$50,346,542	\$53,953,733	(\$3,607,191)	-9.0%	\$14,838,845	\$16,775,983	(\$1,937,139)	-11.1%	\$65,185,387	\$70,729,716	(\$5,544,330)	-9.5%
10	11/8/2008	\$54,860,087	\$53,635,090	\$1,224,997	-7.9%	\$16,057,069	\$15,912,791	\$144,278	-9.9%	\$70,917,156	\$69,547,881	\$1,369,275	-8.3%
11	11/15/2008	\$53,484,812	\$51,254,401	\$2,230,411	-6.8%	\$15,829,819	\$15,797,076	\$32,744	-9.0%	\$69,314,631	\$67,051,477	\$2,263,155	-7.3%
12	11/22/2008	\$52,806,511	\$50,897,817	\$1,908,694	-5.9%	\$16,460,748	\$15,801,720	\$659,028	-7.9%	\$69,267,259	\$66,699,537	\$2,567,722	-6.4%
13	11/29/2008	\$52,199,741	\$53,913,115	(\$1,713,374)	-5.7%	\$17,397,576	\$17,055,505	\$342,072	-7.1%	\$69,597,317	\$70,968,620	(\$1,371,303)	-6.0%
14	12/6/2008	\$56,731,851	\$55,702,697	\$1,029,154	-5.1%	\$20,363,789	\$17,900,717	\$2,463,073	-5.5%	\$77,095,640	\$73,603,414	\$3,492,227	-5.2%
15	12/13/2008	\$54,109,617	\$53,703,516	\$406,101	-4.7%	\$22,952,228	\$17,820,841	\$5,131,387	-3.0%	\$77,061,845	\$71,524,357	\$5,537,488	-4.3%
16	12/20/2008	\$55,777,328	\$57,592,769	(\$1,815,441)	-4.6%	\$15,833,517	\$17,436,233	(\$1,602,716)	-3.4%	\$71,610,845	\$75,029,002	(\$3,418,157)	-4.3%
17	12/27/2008	\$57,597,885	\$57,696,003	(\$98,118)	-4.3%	\$15,851,771	\$14,743,680	\$1,108,091	-2.9%	\$73,449,656	\$72,439,683	\$1,009,973	-4.0%
18	1/3/2009	\$57,582,115	\$57,935,952	(\$353,837)	-4.1%	\$16,900,028	\$15,704,450	\$1,195,578	-2.3%	\$74,482,143	\$73,640,402	\$841,741	-3.7%
19	1/10/2009	\$54,250,945	\$55,360,542	(\$1,109,597)	-4.0%	\$16,203,220	\$15,691,540	\$511,680	-2.0%	\$70,454,165	\$71,052,082	(\$597,917)	-3.5%
20	1/17/2009	\$51,625,339	\$54,920,166	(\$3,294,827)	-4.1%	\$15,701,605	\$16,259,669	(\$558,064)	-2.1%	\$67,326,944	\$71,179,835	(\$3,852,891)	-3.6%
21	1/24/2009	\$52,789,573	\$54,439,890	(\$1,650,317)	-4.1%	\$15,897,473	\$16,691,724	(\$794,251)	-2.2%	\$68,687,046	\$71,131,614	(\$2,444,568)	-3.6%
22	1/31/2009	\$55,453,471	\$57,464,382	(\$2,010,911)	-4.0%	\$16,908,272	\$17,968,227	(\$1,059,955)	-2.4%	\$72,361,743	\$75,432,609	(\$3,070,866)	-3.7%
23	2/7/2009	\$62,247,711	\$60,715,019	\$1,532,692	-3.7%	\$18,354,314	\$20,097,338	(\$1,743,025)	-2.7%	\$80,602,025	\$80,812,357	(\$210,333)	-3.5%
24	2/14/2009	\$60,509,056	\$57,093,143	\$3,415,913	-3.3%	\$19,218,078	\$22,179,908	(\$2,961,831)	-3.3%	\$79,727,134	\$79,273,051	\$454,083	-3.3%
25	2/21/2009	\$59,194,623	\$57,627,047	\$1,567,576	-3.0%	\$21,098,199	\$27,230,539	(\$6,132,340)	-4.5%	\$80,292,822	\$84,857,586	(\$4,564,764)	-3.4%
26	2/28/2009	\$58,857,216	\$55,591,667	\$3,265,549	-2.7%	\$24,116,924	\$17,016,118	\$7,100,806	-2.8%	\$82,974,140	\$72,607,785	\$10,366,355	-2.7%
27	3/7/2009	\$59,552,257	\$56,837,481	\$2,714,776	-2.4%	\$23,995,136	\$16,690,193	\$7,304,943	-1.1%	\$83,547,393	\$73,527,674	\$10,019,719	-2.1%
28	3/14/2009	\$53,754,084	\$54,587,112	(\$833,028)	-2.4%	\$18,769,831	\$16,448,165	\$2,321,667	-0.6%	\$72,523,915	\$71,035,277	\$1,488,639	-1.9%
29	3/21/2009	\$52,581,107	\$53,098,937	(\$517,830)	-2.3%	\$15,903,038	\$16,639,184	(\$736,146)	-0.7%	\$68,484,145	\$69,738,121	(\$1,253,976)	-1.9%
30	3/28/2009	\$52,560,961	\$53,933,689	(\$1,372,728)	-2.3%	\$16,094,933	\$17,698,625	(\$1,603,692)	-1.0%	\$68,655,894	\$71,632,314	(\$2,976,420)	-2.0%
31	4/4/2009	\$56,249,759	\$57,598,982	(\$1,349,223)	-2.3%	\$17,357,002	\$17,665,411	(\$308,409)	-1.0%	\$73,606,761	\$75,264,393	(\$1,657,632)	-2.0%
32	4/11/2009		\$53,954,185				\$15,860,784				\$69,814,969		
33	4/18/2009		\$53,946,736				\$16,452,676				\$70,399,412		
34	4/25/2009		\$51,533,006				\$16,873,949				\$68,406,955		
35	5/2/2009		\$53,250,568				\$18,202,103				\$71,452,671		
36	5/9/2009		\$54,060,849				\$18,422,562				\$72,483,411		
37	5/16/2009		\$54,010,641				\$20,728,360				\$74,739,001		
38	5/23/2009		\$50,377,032				\$15,461,384				\$65,838,416		
39	5/30/2009		\$49,545,080				\$15,175,370				\$64,720,450		
40	6/6/2009		\$53,702,986				\$15,982,166				\$69,685,152		

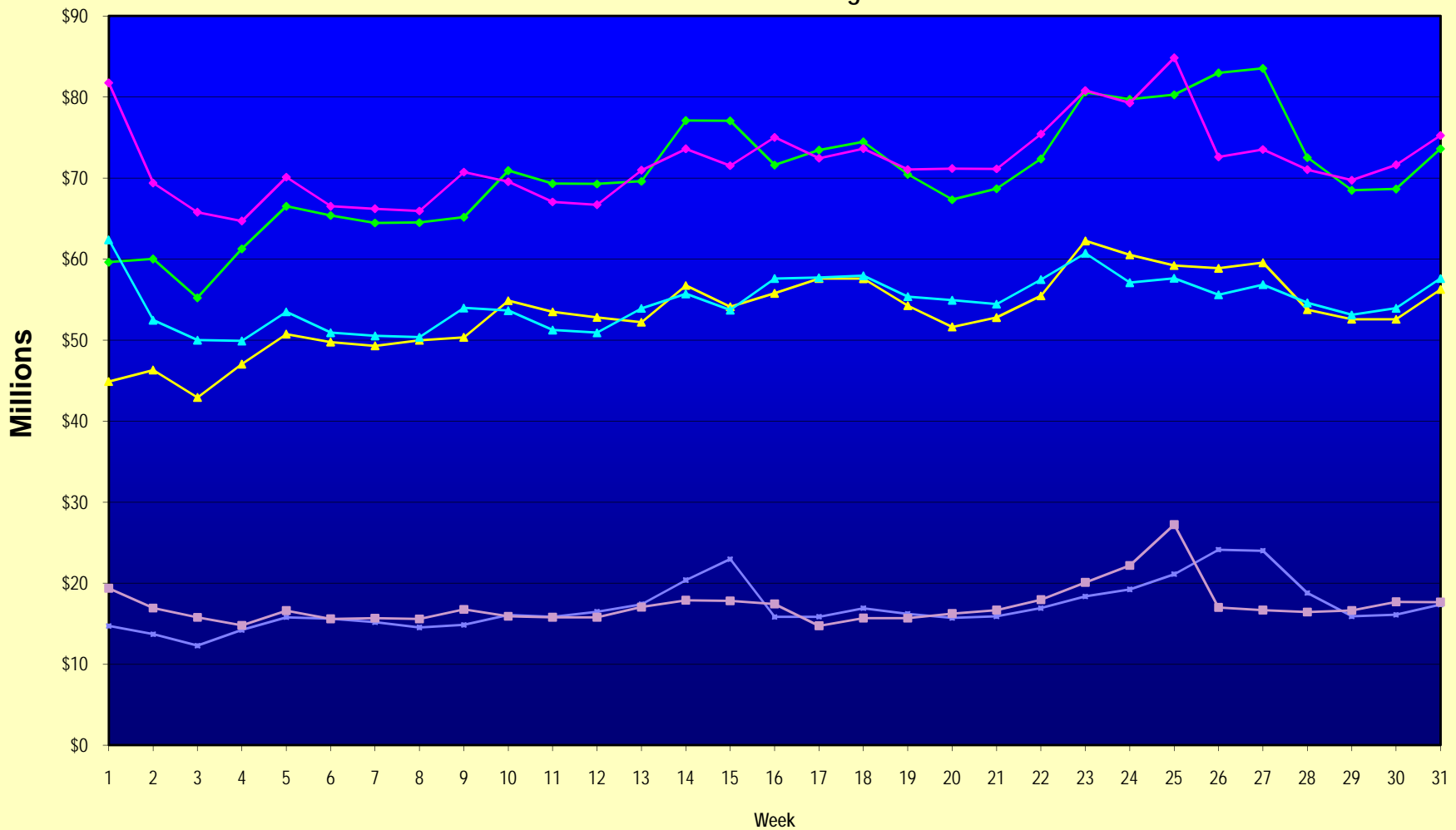
Note: Week 1 is not a full week of sales as this report is prepared on a Fiscal Year basis.

Texas Lottery Commission
Fiscal Year Over Year Change in Sales
Unaudited
FY 2009 Compared to FY 2008

Week	FY 2009 Week Ending	INSTANT TICKETS				ON-LINE GAMES				TOTAL SALES			
		FY 2009	FY 2008	Difference	% change - Cumulative Sales	FY 2009	FY 2008	Difference	% change - Cumulative Sales	FY 2009	FY 2008	Difference	% change - Cumulative Sales
41	6/13/2009		\$51,171,483				\$16,589,087				\$67,760,570		
42	6/20/2009		\$50,650,362				\$15,728,484				\$66,378,846		
43	6/27/2009		\$49,258,266				\$15,250,905				\$64,509,171		
44	7/4/2009		\$53,393,355				\$16,270,619				\$69,663,974		
45	7/11/2009		\$53,127,756				\$16,914,922				\$70,042,678		
46	7/18/2009		\$51,593,146				\$17,752,738				\$69,345,884		
47	7/25/2009		\$49,902,181				\$16,706,145				\$66,608,326		
48	8/1/2009		\$49,605,420				\$16,254,383				\$65,859,803		
49	8/8/2009		\$50,961,907				\$16,770,496				\$67,732,403		
50	8/15/2009		\$49,452,511				\$16,749,487				\$66,201,998		
51	8/22/2009		\$49,249,518				\$17,286,302				\$66,535,820		
52	8/29/2009		\$49,468,928				\$18,109,997				\$67,578,925		
53	9/5/2009		\$6,054,239				\$493,109				\$6,547,348		
Total thru Current Week		\$1,656,075,803	\$1,695,565,940	(\$39,490,137)	-2.3%	\$528,144,636	\$533,605,837	(\$5,461,202)	-1.0%	\$2,184,220,439	\$2,229,171,777	(\$44,951,339)	-2.0%
Fiscal Year Total		\$1,656,075,803	\$2,783,836,095			\$528,144,636	\$887,641,858			\$2,184,220,439	\$3,671,477,953		

** FY 2009 includes 6 days; FY 2008 includes 8 days
FY 2009 average daily sales are \$9,242,258. Two days at average daily sales are \$18,484,516.

Texas Lottery Commission Fiscal Year Over Year Change in Sales



◆ Total Sales 2009
 ◆ Total Sales 2008
 ▲ Instant Tickets 2009
 ▲ Instant Tickets 2008
 ■ On-Line Games 2009
 ■ On-Line Games 2008

Note: Week 1 is not a full week of sales as this report is prepared on a Fiscal Year basis.

Texas Lottery Commission
Instant Tickets by Price Point
Sales, Prize Expense, Sales Contribution and Payout Percentage With Year Over Year Changes
Unaudited

Fiscal Year	Price Point	# of Active Games	FY Sales	% of Instant Ticket Sales	Year over Year Change in Sales	FY Prize Expense	Year over Year Change in Prize Expense	FY Sales Contribution	Year over Year Change in Contribution	Average Prize Payout %	Year over Year Change in Payout %
2008	\$1.00	43	141,944,013	8.4%		\$85,330,342		\$56,613,671		60.1%	0.0%
thru	\$2.00	48	277,475,624	16.4%		\$180,582,898		\$96,892,726		65.1%	0.4%
4/5/2008	\$3.00	15	145,020,732	8.6%		\$95,317,670		\$49,703,063		65.7%	-0.1%
	\$5.00	42	474,382,245	28.0%		\$321,211,128		\$153,171,117		67.7%	-0.4%
	\$7.00	11	103,053,790	6.1%		\$70,085,172		\$32,968,618		68.0%	0.1%
	\$10.00	18	256,764,886	15.1%		\$178,448,771		\$78,316,115		69.5%	-1.4%
	\$20.00	8	110,003,960	6.5%		\$79,101,461		\$30,902,499		71.9%	-0.1%
	\$25.00	2	47,141,250	2.8%		\$34,227,429		\$12,913,821		72.6%	0.3%
	\$30.00	3	39,635,790	2.3%		\$28,689,656		\$10,946,134		72.4%	0.2%
	\$50.00	2	100,143,650	5.9%		\$72,250,904		\$27,892,746		72.1%	0.0%
Total		192	\$1,695,565,940			\$1,145,245,431		\$550,320,509		67.5%	0.1%
2009	\$1.00	39	145,551,514	8.8%		87,526,768		58,024,746		60.1%	0.1%
thru	\$2.00	38	286,015,139	17.3%		186,301,783		99,713,356		65.1%	-0.2%
4/4/2009	\$3.00	15	173,438,268	10.5%		113,926,177		59,512,091		65.7%	0.0%
	\$5.00	40	508,766,674	30.8%		346,007,389		162,759,285		68.0%	0.1%
	\$7.00	7	82,434,443	5.0%		56,060,443		26,374,000		68.0%	0.0%
	\$10.00	18	234,132,900	13.9%		163,823,844		70,309,056		70.0%	0.0%
	\$20.00	8	149,015,960	9.1%		106,924,755		42,091,205		71.8%	0.0%
	\$25.00	1	2,372,325	0.2%		1,725,527		646,798		72.7%	0.2%
	\$30.00	3	10,025,880	0.6%		7,265,123		2,760,757		72.5%	0.1%
	\$50.00	4	64,322,700	3.8%		46,624,077		17,698,623		72.5%	0.4%
Total		173	\$1,656,075,803			\$1,116,185,886		\$539,889,917		67.4%	-0.4%
Variance	\$1.00	-4	3,607,501		2.5%	2,196,427	2.6%	1,411,074	2.5%	0.02%	
2009 to	\$2.00	-10	8,539,515		3.1%	5,718,885	3.2%	2,820,630	2.9%	0.06%	
2008	\$3.00	0	28,417,536		19.6%	18,608,508	19.5%	9,809,028	19.7%	-0.04%	
	\$5.00	-2	34,384,429		7.2%	24,796,260	7.7%	9,588,169	6.3%	0.30%	
	\$7.00	-4	-20,619,347		-20.0%	-14,024,729	-20.0%	-6,594,618	-20.0%	0.00%	
	\$10.00	0	-22,631,986		-8.8%	-14,624,927	-8.2%	-8,007,059	-10.2%	0.47%	
	\$20.00	0	39,012,000		35.5%	27,823,294	35.2%	11,188,706	36.2%	-0.15%	
	\$25.00	-1	-44,768,925		-95.0%	-32,501,902	-95.0%	-12,267,023	-95.0%	0.13%	
	\$30.00	0	-29,609,910		-74.7%	-21,424,533	-74.7%	-8,185,377	-74.8%	0.08%	
	\$50.00	2	-35,820,950		-35.8%	-25,626,828	-35.5%	-10,194,122	-36.5%	0.34%	
Total		-19	-\$39,490,137		-2.3%	-\$29,059,544	-2.5%	-\$10,430,593	-1.9%	-0.14%	

Texas Lottery Commission
Instant Tickets by Price Point
Sales, Prize Expense, Sales Contribution and Payout Percentage With Year Over Year Changes
Unaudited

Notes - Instant Ticket Variances

		FY 2009		FY 2008		Difference
Sales	\$1 - \$7		\$1,196,206,038		\$1,141,876,404	\$54,329,634
Prize Exp.	\$1 - \$7		\$789,822,561		\$752,527,210	\$37,295,351
Sales Cont.	\$1 - \$7		\$406,383,477		\$389,349,194	\$17,034,283
Prize Exp. %	\$1 - \$7		66.0%		65.9%	0.1%
		FY 2009		FY 2008		Difference
Sales	\$10 - \$50		\$459,869,765		\$553,689,536	-\$93,819,771
Prize Exp.	\$10 - \$50		\$326,363,325		\$392,718,221	-\$66,354,895
Sales Cont.	\$10 - \$50		\$133,506,440		\$160,971,315	-\$27,464,876
Prize Exp. %	\$10 - \$50		71.0%		70.9%	0.0%
		FY 2009		FY 2008		Difference
Sales	Instant		\$1,656,075,803		\$1,695,565,940	-\$39,490,137
Prize Exp.	Instant		\$1,116,185,886		\$1,145,245,431	-\$29,059,544
Sales Cont.	Instant		\$539,889,917		\$550,320,509	-\$10,430,593
Prize Exp. %	Instant		67.4%		67.5%	-0.1%

		FY 2009		FY 2008		Difference
Sales	\$1 - \$10		\$1,430,338,938		\$1,398,641,290	\$31,697,648
Prize Exp.	\$1 - \$10		\$953,646,405		\$930,975,981	\$22,670,424
Sales Cont.	\$1 - \$10		\$476,692,533		\$467,665,309	\$9,027,224
Prize Exp. %	\$1 - \$10		66.7%		66.6%	0.1%
		FY 2009		FY 2008		Difference
Sales	\$20 - \$50		\$225,736,865		\$296,924,650	-\$71,187,785
Prize Exp.	\$20 - \$50		\$162,539,482		\$214,269,450	-\$51,729,968
Sales Cont.	\$20 - \$50		\$63,197,383		\$82,655,200	-\$19,457,817
Prize Exp. %	\$20 - \$50		72.0%		72.2%	-0.2%
		FY 2009		FY 2008		Difference
Sales	Instant		\$1,656,075,803		\$1,695,565,940	-\$39,490,137
Prize Exp.	Instant		\$1,116,185,886		\$1,145,245,431	-\$29,059,544
Sales Cont.	Instant		\$539,889,917		\$550,320,509	-\$10,430,593
Prize Exp. %	Instant		67.4%		67.5%	-0.1%

Texas Lottery Commission
Weekly Sales Summary
& Comparison to Previous Week
 Unaudited

	Week Ending 04/04/2009		Week Ending 03/28/2009			
	<u>THIS WEEK</u>	% of Sales	<u>LAST WEEK</u>	% of Sales	<u>\$ change</u>	<u>% change</u>
Total Sales	<u>\$73,606,761</u>		<u>\$68,655,894</u>		<u>\$4,950,867</u>	7.21%
Instant Tickets	<u>\$56,249,759</u>	76.4%	<u>\$52,560,961</u>	76.6%	<u>\$3,688,798</u>	7.02%
Lotto Texas	\$3,746,083	5.1%	\$3,486,731	5.1%	\$259,352	7.44%
Pick 3	\$5,893,044	8.0%	\$5,633,455	8.2%	\$259,589	4.61%
Pick 3 Sum It Up	\$122,332	0.2%	\$114,270	0.2%	\$8,063	7.06%
Cash 5	\$1,429,598	1.9%	\$1,381,550	2.0%	\$48,048	3.48%
Texas Two Step	\$940,614	1.3%	\$901,673	1.3%	\$38,941	4.32%
Mega Millions	\$3,321,274	4.5%	\$2,845,499	4.1%	\$475,775	16.72%
Megaplier	\$794,282	1.1%	\$701,971	1.0%	\$92,311	13.15%
Daily 4	\$998,042	1.4%	\$925,094	1.3%	\$72,949	7.89%
Daily 4 Sum It Up	<u>\$111,734</u>	0.2%	<u>\$104,692</u>	0.2%	<u>\$7,042</u>	6.73%
Total Online Sales	<u>\$17,357,002</u>		<u>\$16,094,933</u>		<u>\$1,262,069</u>	7.84%

* Totals may not sum due to rounding.

Texas Lottery Commission
Weekly Sales Summary
Unaudited

INSTANT TICKETS
TOP TEN SELLING GAMES

For the Week Ending : 04/04/2009

Rank	Price Point	Game	Sales (Millions)
1	\$ 5	EXTREME 8'S	\$ 4.170
2	\$ 10	PRECIOUS JEWELS	\$ 3.876
3	\$ 3	BONUS CASHWORD	\$ 2.698
4	\$ 50	\$140,000,000 EXTREME PAYOUT	\$ 2.570
5	\$ 10	STACKS OF CASH	\$ 2.354
6	\$ 7	DAZZLIN' DIAMOND 7'S	\$ 2.231
7	\$ 5	3 OF A KIND	\$ 1.966
8	\$ 5	BUST THE BANK	\$ 1.935
9	\$ 20	SUPER SET FOR LIFE	\$ 1.854
10	\$ 5	BONUS BREAK THE BANK	\$ 1.693

Texas Lottery Commission
Prize Payout Tracking Report
Unaudited

Through Week Ending 04/04/2009

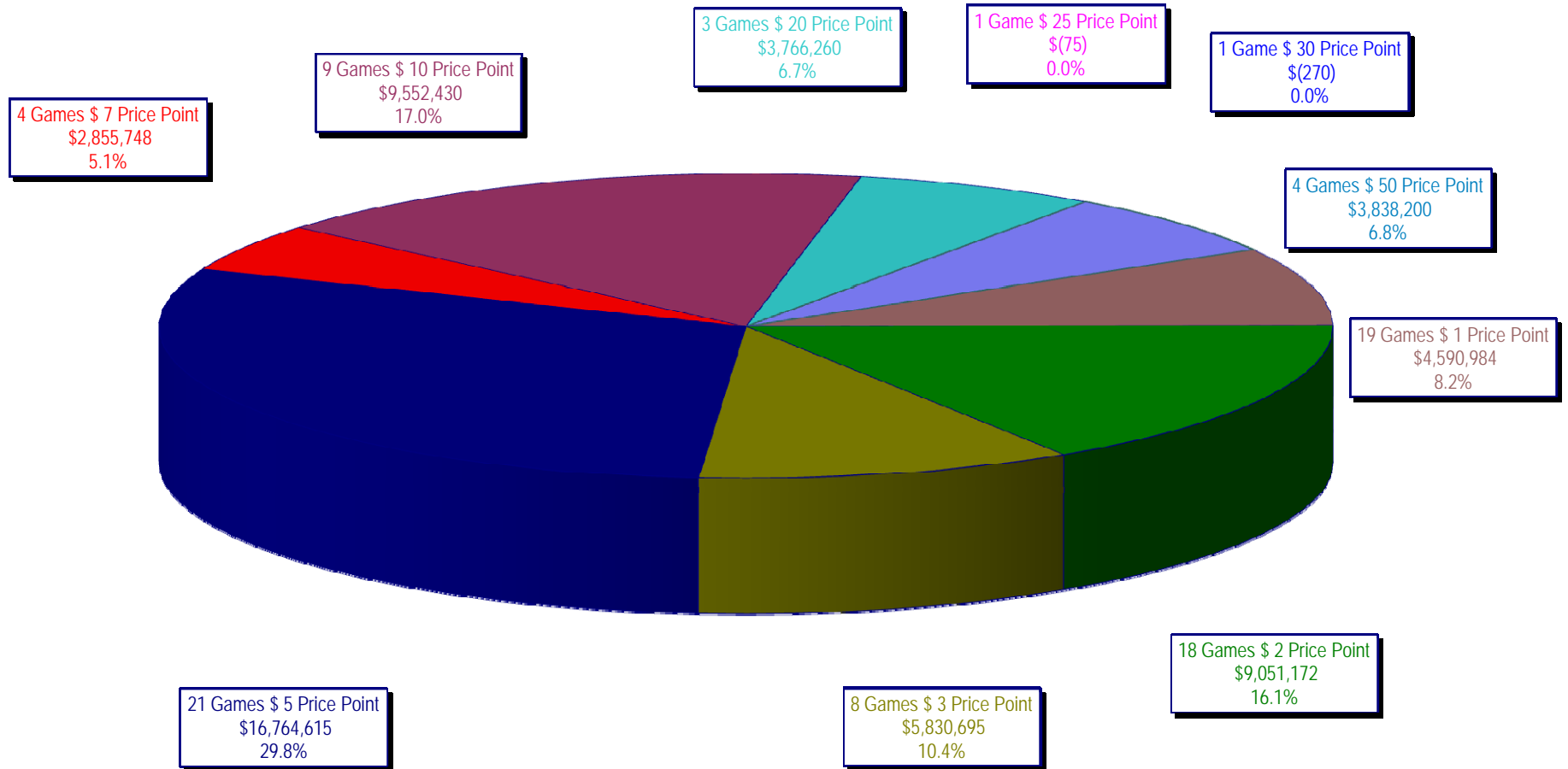
On-Line Sales

		FY Sales Through Week Ending 4/4/2009		FY Prize Expense Through Week Ending 4/4/2009	Actual* Prize Payout	Base Payout (Prize Pool)
Lotto	\$	114,298,288	\$	57,253,075	50.09%	50.00%
Pick 3		171,494,543		85,378,470	49.78%	50.00%
Pick 3 Sum It Up		3,611,849		1,649,815	45.68%	50.00%
Cash 5		42,719,214		21,462,896	50.24%	50.00%
Texas Two-Step		30,900,977		16,686,505	54.00%	50.00%
Mega Millions		109,760,085		54,011,875	49.21%	50.00%**
Megaplier		25,434,730		10,673,132	41.96%	N/A
Daily 4		26,637,797		12,840,250	48.20%	50.00%
Daily 4-Sum It Up		3,287,153		1,392,622	42.37%	50.00%
Totals	\$	528,144,636	\$	261,348,639	49.48%	

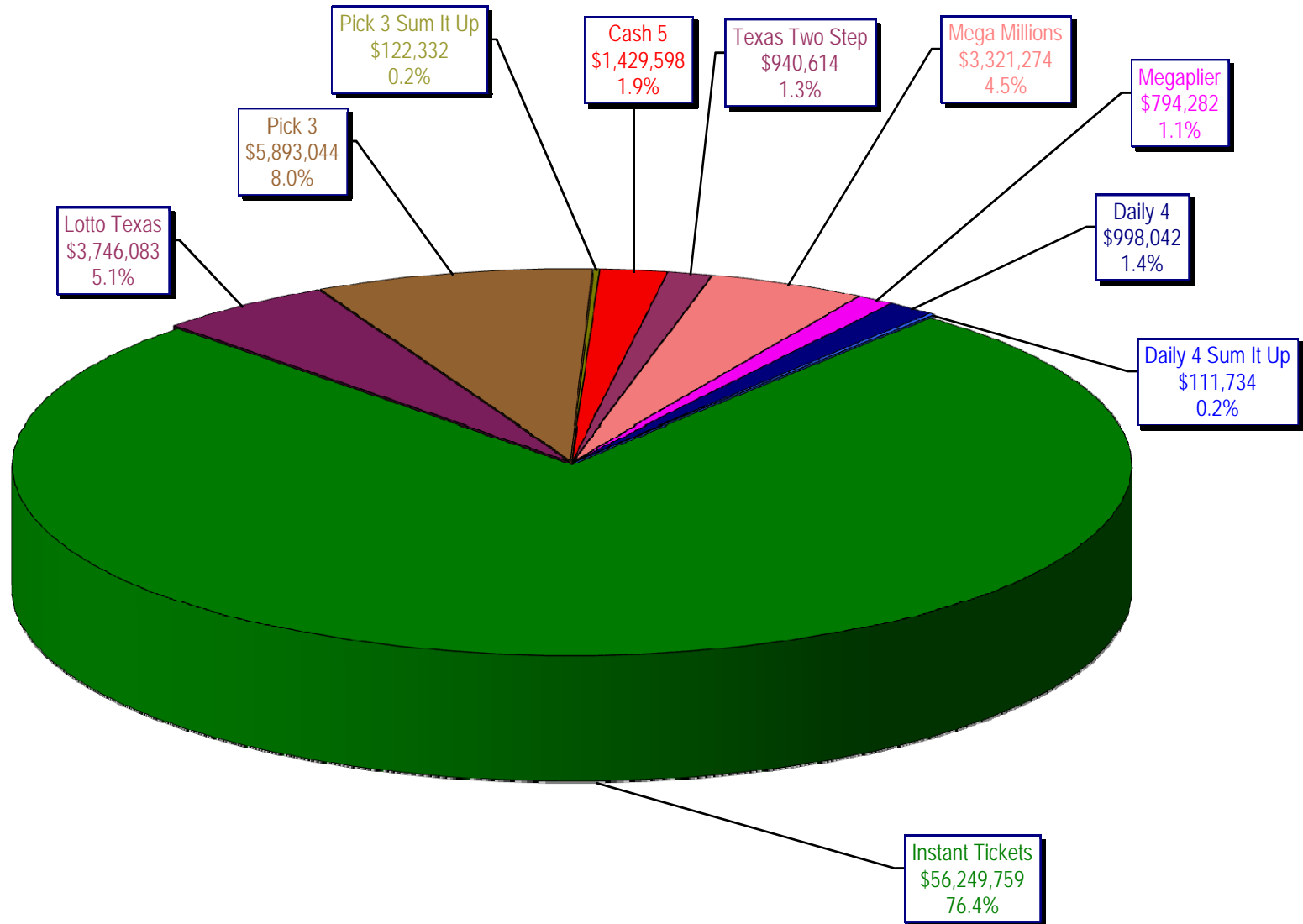
* Before Unclaimed Prizes

** Estimated; depends on # of guaranteed prizes won in Texas

Texas Lottery Commission
Instant Ticket Sales
For the Week Ending 04/04/2009
(Unaudited)



Texas Lottery Commission
All Game Sales
For the Week Ending 04/04/2009
(Unaudited)



Texas Lottery Commission - Weekly Sales Summary for FY 2009 (Unaudited)

Week Ended	Instant Games	New Games & Dates	Lotto Texas	Jackpot		Pick 3	Pick 3 Sum It Up	Cash 5	Texas Two Step	Jackpot		Mega Millions	Jackpot		Megaplier	Daily 4	Daily 4 Sum It Up	Total	Per Cap.
				W	S					M/T	TH/F		T	F					
9/6/2008	50,944,343.00	1108 (\$2,N), 1088 (\$3, N) - 9/01/08	3,378,718.00	5	6	5,436,414.00	122,123.00	1,396,622.00	890,346.00	350	450	2,445,490.00	12	16	649,090.00	786,482.50	109,834.00	66,159,462.50	2.77
9/13/2008	46,309,551.00	1109 (\$1,N), 1098 (\$5, N) - 9/08/08	3,020,089.00	7	8	4,705,585.50	105,899.00	1,279,412.00	856,199.00	600	200	2,327,214.00	24	12	617,672.00	696,633.00	96,156.50	60,014,411.00	2.51
9/20/2008	42,923,171.00	0	3,054,093.00	9	10	4,121,734.50	90,718.00	1,155,350.00	637,792.00	225	250	1,978,127.00	15	12	540,225.00	627,210.00	86,013.50	55,214,434.00	2.31
9/27/2008	47,042,801.00	1111 (\$2,N), 1099 (\$5, N) - 9/22/08	3,427,671.00	11	12	4,821,563.00	103,189.50	1,288,062.00	834,307.00	275	425	2,322,862.00	16	24	617,085.00	709,741.50	97,858.00	61,265,140.00	2.56
10/4/2008	50,747,162.00	1113 (\$1,N) 9/29/08	3,675,683.00	13	14	5,305,711.00	116,332.50	1,369,040.00	1,074,874.00	525	650	2,671,927.00	32	42	693,845.00	770,782.50	106,277.00	66,531,634.00	2.78
10/11/2008	49,763,789.00	0	3,732,365.00	15	16	5,287,094.00	114,665.50	1,370,334.00	1,305,250.00	800	975	2,306,070.00	12	16	622,120.00	778,204.00	106,395.00	65,386,286.50	2.74
10/18/2008	49,299,053.00	1117 (\$3,N), 1118 (\$20,N) - 10/13/08	3,780,438.00	17	18	5,149,258.00	109,530.00	1,355,601.00	741,849.00	200	200	2,500,644.00	23	32	652,198.00	776,366.00	102,056.00	64,466,993.00	2.70
10/25/2008	49,977,581.00	1119 (\$1,N), 1120 (\$5,N) - 10/20/08	3,210,762.00	4	5	5,099,671.00	107,104.50	1,339,079.00	789,649.00	225	275	2,456,965.00	42	12	641,206.00	778,434.00	102,972.50	64,503,424.00	2.70
11/1/2008	50,346,542.00	1121 (\$2,N), 1122 (\$10,N) - 10/27/08	3,325,641.00	6	7	5,234,124.00	109,983.00	1,339,046.00	946,035.00	375	475	2,347,596.00	16	23	626,235.00	805,572.00	104,612.50	65,185,386.50	2.73
11/8/2008	54,860,087.00	1123 (\$3,N), 1124 (\$7,N) - 11/03/08; 1103 (\$3,N) - 11/05/08; 1063 (\$3,N) - 11/07/08	3,290,417.00	4	5	5,686,701.00	118,495.00	1,397,985.00	1,158,101.00	625	750	2,729,302.50	31	42	692,662.00	871,230.00	112,175.50	70,917,156.00	2.97
11/15/2008	53,484,812.00	1125 (\$1, N), 1126 (\$5,N) - 11/10/08	3,336,934.00	6	7	5,459,984.00	112,884.00	1,366,024.00	766,955.00	200	225	3,102,251.00	51	62	749,736.00	830,957.00	104,094.00	69,314,631.00	2.90
11/22/2008	52,806,511.00	0	3,452,481.00	8	9	5,329,591.00	108,861.50	1,358,271.00	743,950.00	200	200	3,666,517.00	73	86	847,201.00	849,077.50	104,797.50	69,267,258.50	2.90
11/29/2008	52,199,741.00	1127 (\$2,N), 1128 (\$5,N) - 11/24/08	3,585,374.00	10	11	5,340,783.50	111,443.00	1,315,233.00	686,077.00	200	225	4,441,715.00	96	111	968,906.00	845,475.50	102,569.00	69,597,317.00	2.91
12/6/2008	56,731,851.00	0	3,794,991.00	12	13	5,752,593.00	121,663.50	1,416,446.00	780,328.00	250	200	6,238,355.00	128	146	1,270,214.00	881,841.50	107,357.00	77,095,640.00	3.23
12/13/2008	54,109,617.00	1129 (\$1, N) - 12/08/08	3,315,658.00	4	5	5,580,770.00	114,295.50	1,384,858.00	766,893.00	225	250	9,150,536.00	170	207	1,691,121.00	846,176.50	101,919.50	77,061,844.50	3.22
12/20/2008	55,777,328.00	1104 (\$2,N), 1105 (\$5,N), 1106 (\$10,N) - 12/15/08	3,432,340.00	6	7	5,741,120.00	116,075.50	1,401,805.00	741,945.00	200	200	2,736,234.00	12	16	687,875.00	871,579.50	104,543.00	71,610,845.00	3.00
12/27/2008	57,597,885.00	1077 (\$1,N), 1110 (\$1,N) - 12/22/08	3,582,169.00	8	4	5,628,081.50	115,323.00	1,340,590.00	708,906.00	225	250	2,842,167.00	22	29	706,042.00	828,346.00	100,146.00	73,449,655.50	3.07
1/3/2009	57,582,115.00	0	3,784,763.00	5	6	5,690,220.50	120,519.50	1,406,807.00	934,000.00	325	525	3,190,457.00	37	46	780,850.00	885,674.00	106,736.50	74,482,142.50	3.12
1/10/2009	54,250,945.00	1135 (\$2,N), 1136 (\$5,N) - 1/5/09	3,582,400.00	7	8	5,476,890.00	116,674.50	1,403,531.00	1,267,847.00	675	900	2,701,275.00	12	16	681,574.00	868,919.00	104,109.50	70,454,165.00	2.95
1/17/2009	51,625,339.00	1137 (\$1,N), 1138 (\$3,N) - 1/12/09	3,668,302.50	9	10	5,443,159.00	112,605.00	1,387,958.00	778,563.00	200	200	2,683,707.00	22	12	675,416.00	852,987.00	98,907.50	67,326,944.00	2.82
1/24/2009	52,789,573.00	1115 (\$2,N), 1116 (\$5,N) - 1/19/09	3,723,835.50	11	12	5,514,547.50	115,827.50	1,376,695.00	860,483.00	225	325	2,692,611.00	16	21	676,936.00	836,996.00	99,541.00	68,687,045.50	2.87
1/31/2009	55,453,471.00	1080 (\$1,N), 1024 (\$20,R) - 1/26/09; 1062 (\$5,N) - 1/28/09	3,837,299.00	13	14	5,700,714.50	121,794.50	1,403,756.00	1,070,879.00	450	600	3,002,883.00	30	40	731,253.00	925,937.50	113,755.50	72,361,743.00	3.03
2/7/2009	62,247,711.00	1035 (\$2,N), 1144 (\$5,N), 1058 (\$10, N) - 2/2/09	4,092,117.00	15	16	6,336,717.00	134,543.00	1,481,812.00	842,746.00	200	225	3,509,032.00	50	60	829,550.00	1,007,529.00	120,267.50	80,602,024.50	3.37
2/14/2009	60,509,056.00	1146 (\$7,N), 1089 (\$1,N) - 2/9/09	4,119,193.00	17	18	6,363,028.00	133,901.50	1,445,616.00	1,013,987.00	325	450	4,082,572.00	73	85	928,813.00	1,010,898.50	120,068.50	79,727,133.50	3.34
2/21/2009	59,194,623.00	1046 (\$2,N), 1140 (\$5,N) - 2/16/09	4,326,401.00	19	20	6,038,807.50	128,493.00	1,439,312.00	1,268,803.00	600	750	5,614,471.00	103	120	1,178,133.00	988,075.00	115,703.50	80,292,822.00	3.36
2/28/2009	58,857,216.00	1132 (\$10,N), 1149 (\$1,N) - 2/23/09	4,526,304.00	21	22	6,084,457.50	128,979.50	1,439,607.00	1,668,414.00	925	1,150	7,676,975.00	145	171	1,504,895.00	973,121.00	114,171.00	82,974,140.00	3.47

Texas Lottery Commission - Weekly Sales Summary for FY 2009 (Unaudited)

Week Ended	Instant Games	New Games & Dates	Lotto Texas	Jackpot		Pick 3	Pick 3 Sum It Up	Cash 5	Texas Two Step	Jackpot		Mega Millions	Jackpot		Megaplier	Daily 4	Daily 4 Sum It Up	Total	Per Cap.
				W	S					M/T	TH/F		T	F					
3/7/2009	59,552,257.00	0	4,928,440.00	23	25	6,133,789.00	128,599.00	1,487,185.00	1,984,358.00	1,350	1,600	6,898,457.00	212	12	1,349,427.00	971,644.50	113,236.00	83,547,392.50	3.50
3/14/2009	53,754,084.00	1139 (\$2.N), 1079 (\$5.N) - 3/09/09	4,752,592.00	26	28	5,850,166.00	120,684.50	1,418,127.00	2,112,571.00	1,900	2,150	2,782,204.00	16	26	698,214.00	925,615.00	109,657.50	72,523,915.00	3.03
3/21/2009	52,581,107.00	1107 (\$1.N), 1154 (\$3.N), 1057 (\$10.N) - 3/16/09; 1102 (\$2.N) - 3/19/09	3,437,818.00	4	5	5,776,041.50	117,294.00	1,399,720.00	880,620.00	200	225	2,595,785.00	12	16	653,517.00	934,185.00	108,057.50	68,484,145.00	2.87
3/28/2009	52,560,961.00	1130 (\$5.N), 1150 (\$10.N) - 3/23/09	3,486,731.00	6	7	5,633,454.50	114,269.50	1,381,550.00	901,673.00	300	200	2,845,499.00	24	34	701,971.00	925,093.50	104,691.50	68,655,894.00	2.87
4/4/2009	56,249,759.00	1151 (\$2.N), 1101 (\$50.N) - 3/30/09	3,746,083.00	8	9	5,893,043.50	122,332.00	1,429,598.00	940,614.00	225	300	3,321,274.00	43	54	794,282.00	998,042.00	111,733.50	73,606,761.00	3.08
weekly change	7.02%		7.44%			4.61%	7.06%	3.48%	4.32%			16.72%			13.15%	7.89%	6.73%	7.21%	
	SALES		SALES			SALES	SALES	SALES	SALES			SALES			SALES	SALES	SALES	SALES	% of Sales
Startup to date	35,136,661,805.00		10,393,395,335.00			3,470,213,495.50	10,097,679.00	2,161,875,224.00	457,166,695.00			1,035,898,679.50			243,642,764.00	68,854,768.50	11,625,956.50	53,197,566,374.00	100.0%
Calendar Year to date	754,758,130.00		54,026,043.00			79,053,996.50	175,670.50	19,136,770.00	16,007,558.00			51,941,776.00			11,774,949.00	12,647,110.00	1,485,149.00	1,001,007,152.00	100.0%
Fiscal Year to date 2009	1,656,075,803.00		114,298,288.00			171,494,543.00	3,611,849.00	42,719,214.00	30,900,977.00			109,760,084.50			25,434,730.00	26,637,797.00	3,287,153.00	2,184,220,438.50	100.0%