



WEEKLY SALES SUMMARY

Unaudited

Week Ending: 04/06/2013

Texas Lottery Commission
Fiscal Year to Date Sales Comparison
Unaudited

Through the week ending 04/06/2013 (32 weeks)

Sales by Game	FY 2011 *	FY 2012 **	FY 2013	\$ Change		% Change	
				FY 2013 to FY 2011	FY 2013 to FY 2012	FY 2013 to FY 2011	FY 2013 to FY 2012
Instants	\$ 1,739,286,786	\$ 1,855,876,806	\$ 1,943,850,272	\$ 204,563,486	\$ 87,973,466	11.8%	4.7%
Lotto Texas	106,086,814	105,732,968	90,996,765	-15,090,049	-14,736,203	-14.2%	-13.9%
Pick 3	167,406,586	164,040,910	161,836,578	-5,570,008	-2,204,332	-3.3%	-1.3%
Pick 3 Sum It Up	3,380,776	3,393,898	3,039,988	-340,789	-353,911	-10.1%	-10.4%
Cash Five	39,490,932	39,822,367	33,923,162	-5,567,770	-5,899,205	-14.1%	-14.8%
Texas Two Step	28,824,367	40,501,011	35,531,282	6,706,915	-4,969,729	23.3%	-12.3%
Mega Millions	124,464,031	159,628,844	61,815,136	-62,648,895	-97,813,708	-50.3%	-61.3%
Megaplier	25,155,421	29,176,166	14,545,191	-10,610,230	-14,630,975	-42.2%	-50.1%
Daily 4	35,061,408	38,986,029	43,754,339	8,692,932	4,768,310	24.8%	12.2%
Daily 4 Sum It Up	2,716,668	2,864,095	2,865,124	148,456	1,029	5.5%	0.0%
Powerball	56,198,417	94,407,186	163,607,909	107,409,492	69,200,724	191.1%	73.3%
Power Play	13,208,470	16,796,106	17,180,380	3,971,910	384,275	30.1%	2.3%
All or Nothing	-	-	51,573,257	51,573,257	51,573,257	-	-
Total	\$ <u>2,341,280,674</u>	\$ <u>2,551,226,384</u>	\$ <u>2,624,519,382</u>	\$ <u>283,238,708</u>	\$ <u>73,292,998</u>	12.1%	2.9%

* 3 extra days

** 2 extra days

Texas Lottery Commission
Fiscal Year to Date Cumulative Average Sales Comparison
Unaudited

Through the week ending 04/06/2013 (32 weeks)

Sales by Game	FY 2011	FY 2012	FY 2013
Instant	\$ 7,870,076	\$ 8,435,804	\$ 8,916,744
Lotto Texas	480,031	480,604	417,416
Pick 3	757,496	745,640	742,370
Pick 3 Sum It Up	15,298	15,427	13,945
Cash Five	178,692	181,011	155,611
Texas Two Step	130,427	184,096	162,988
Mega Millions	563,186	725,586	283,556
Megaplier	113,825	132,619	66,721
Daily 4	158,649	177,209	200,708
Daily 4 Sum It Up	12,293	13,019	13,143
Powerball	254,291	429,124	750,495
Power Play	59,767	76,346	78,809
All or Nothing	-	-	245,587 *
Total	\$ <u>10,594,030</u>	\$ <u>11,596,484</u>	\$ <u>12,048,092</u>
	thru 04/09/2011 221 days	thru 04/07/2012 220 days	thru 04/06/2013 218 days * 210 days

Texas Lottery Commission
Fiscal Year Over Year Change in Sales
Unaudited
FY 2013 Compared to FY 2012

Week	FY 2013 Week Ending	INSTANT TICKETS				DRAW GAMES				TOTAL SALES			
		FY 2013	FY 2012	Difference	% change - Cumulative Sales	FY 2013	FY 2012	Difference	% change - Cumulative Sales	FY 2013	FY 2012	Difference	% change - Cumulative Sales
1	9/1/2012**	\$9,611,328	\$25,147,181	(\$15,535,853)	-61.8%	\$3,712,535	\$9,704,561	(\$5,992,026)	-61.7%	\$13,323,863	\$34,851,742	(\$21,527,879)	-61.8%
2	9/8/2012	\$56,941,761	\$50,591,068	\$6,350,693	12.6%	\$19,305,417	\$17,681,853	\$1,623,564	9.2%	\$76,247,178	\$68,272,921	\$7,974,257	11.7%
3	9/15/2012	\$56,302,875	\$49,835,063	\$6,467,812	13.0%	\$20,857,230	\$16,842,326	\$4,014,904	23.8%	\$77,160,105	\$66,677,389	\$10,482,716	15.7%
4	9/22/2012	\$54,974,438	\$49,777,138	\$5,197,300	10.4%	\$20,570,277	\$17,504,800	\$3,065,477	17.5%	\$75,544,715	\$67,281,938	\$8,262,777	12.3%
5	9/29/2012	\$54,606,674	\$51,040,274	\$3,566,400	7.0%	\$20,462,690	\$18,653,100	\$1,809,591	9.7%	\$75,069,364	\$69,693,374	\$5,375,991	7.7%
6	10/6/2012	\$59,223,327	\$53,715,157	\$5,508,170	10.3%	\$19,279,973	\$17,225,680	\$2,054,293	11.9%	\$78,503,300	\$70,940,837	\$7,562,463	10.7%
7	10/13/2012	\$57,075,606	\$51,942,121	\$5,133,485	9.9%	\$18,638,467	\$17,854,980	\$783,487	4.4%	\$75,714,073	\$69,797,101	\$5,916,972	8.5%
8	10/20/2012	\$56,630,134	\$52,837,769	\$3,792,365	7.2%	\$18,998,943	\$19,558,519	(\$559,577)	-2.9%	\$75,629,077	\$72,396,288	\$3,232,789	4.5%
9	10/27/2012	\$55,789,743	\$52,206,644	\$3,583,099	6.9%	\$20,130,190	\$21,504,565	(\$1,374,376)	-6.4%	\$75,919,933	\$73,711,209	\$2,208,724	3.0%
10	11/3/2012	\$58,142,777	\$56,265,310	\$1,877,467	3.3%	\$20,638,008	\$20,870,086	(\$232,079)	-1.1%	\$78,780,785	\$77,135,396	\$1,645,389	2.1%
11	11/10/2012	\$57,484,804	\$55,682,645	\$1,802,159	3.2%	\$20,862,872	\$17,862,404	\$3,000,468	16.8%	\$78,347,676	\$73,545,049	\$4,802,627	6.5%
12	11/17/2012	\$55,805,228	\$54,978,079	\$827,149	1.5%	\$21,660,705	\$17,879,985	\$3,780,721	21.1%	\$77,465,933	\$72,858,064	\$4,607,870	6.3%
13	11/24/2012	\$61,331,977	\$53,942,448	\$7,389,529	13.7%	\$27,172,853	\$16,877,145	\$10,295,708	61.0%	\$88,504,830	\$70,819,593	\$17,685,237	25.0%
14	12/1/2012	\$58,420,598	\$57,153,469	\$1,267,129	2.2%	\$62,797,943	\$18,298,636	\$44,499,307	243.2%	\$121,218,541	\$75,452,105	\$45,766,436	60.7%
15	12/8/2012	\$62,489,745	\$55,318,284	\$7,171,461	13.0%	\$19,630,155	\$19,033,326	\$596,829	3.1%	\$82,119,900	\$74,351,610	\$7,768,290	10.4%
16	12/15/2012	\$59,661,880	\$58,612,629	\$1,049,251	1.8%	\$20,064,982	\$20,045,279	\$19,704	0.1%	\$79,726,862	\$78,657,908	\$1,068,955	1.4%
17	12/22/2012	\$63,556,886	\$60,628,256	\$2,928,630	4.8%	\$19,084,653	\$22,572,986	(\$3,488,333)	-15.5%	\$82,641,539	\$83,201,242	(\$559,703)	-0.7%
18	12/29/2012	\$63,547,886	\$63,065,007	\$482,879	0.8%	\$17,359,874	\$19,948,521	(\$2,588,647)	-13.0%	\$80,907,760	\$83,013,528	(\$2,105,768)	-2.5%
19	1/5/2013	\$60,452,721	\$60,479,896	(\$27,175)	0.0%	\$18,833,047	\$17,331,888	\$1,501,159	8.7%	\$79,285,768	\$77,811,784	\$1,473,984	1.9%
20	1/12/2013	\$58,862,997	\$57,689,526	\$1,173,471	2.0%	\$18,879,167	\$17,568,732	\$1,310,435	7.5%	\$77,742,164	\$75,258,258	\$2,483,906	3.3%
21	1/19/2013	\$58,494,057	\$58,704,854	(\$210,797)	-0.4%	\$19,258,004	\$19,886,540	(\$628,537)	-3.2%	\$77,752,061	\$78,591,394	(\$839,334)	-1.1%
22	1/26/2013	\$57,871,744	\$57,611,325	\$260,419	0.5%	\$20,093,215	\$20,641,697	(\$548,483)	-2.7%	\$77,964,959	\$78,253,022	(\$288,064)	-0.4%
23	2/2/2013	\$61,846,715	\$65,553,366	(\$3,706,651)	-5.7%	\$21,032,335	\$23,689,855	(\$2,657,521)	-11.2%	\$82,879,050	\$89,243,221	(\$6,364,172)	-7.1%
24	2/9/2013	\$70,374,906	\$75,070,485	(\$4,695,579)	-6.3%	\$21,183,638	\$28,361,583	(\$7,177,945)	-25.3%	\$91,558,544	\$103,432,068	(\$11,873,524)	-11.5%
25	2/16/2013	\$71,002,438	\$66,679,947	\$4,322,491	6.5%	\$19,295,197	\$19,588,615	(\$293,418)	-1.5%	\$90,297,635	\$86,268,562	\$4,029,073	4.7%
26	2/23/2013	\$71,203,934	\$64,868,899	\$6,335,035	9.8%	\$19,729,989	\$19,965,388	(\$235,399)	-1.2%	\$90,933,923	\$84,834,287	\$6,099,636	7.2%
27	3/2/2013	\$74,551,567	\$67,135,065	\$7,416,502	11.0%	\$20,278,327	\$20,947,181	(\$668,854)	-3.2%	\$94,829,894	\$88,082,246	\$6,747,648	7.7%
28	3/9/2013	\$75,360,138	\$68,299,006	\$7,061,132	10.3%	\$21,447,763	\$22,152,639	(\$704,876)	-3.2%	\$96,807,901	\$90,451,645	\$6,356,256	7.0%
29	3/16/2013	\$70,065,528	\$65,013,692	\$5,051,836	7.8%	\$22,055,563	\$23,351,718	(\$1,296,155)	-5.6%	\$92,121,091	\$88,365,410	\$3,755,682	4.3%
30	3/23/2013	\$70,137,284	\$64,035,255	\$6,102,029	9.5%	\$28,709,024	\$27,416,609	\$1,292,415	4.7%	\$98,846,308	\$91,451,864	\$7,394,444	8.1%
31	3/30/2013	\$68,758,522	\$65,135,991	\$3,622,531	5.6%	\$18,597,091	\$84,628,987	(\$66,031,896)	-78.0%	\$87,355,613	\$149,764,978	(\$62,409,365)	-41.7%
32	4/6/2013	\$73,270,054	\$66,860,957	\$6,409,097	9.6%	\$20,048,992	\$19,899,400	\$149,592	0.8%	\$93,319,046	\$86,760,357	\$6,558,689	7.6%
33	4/13/2013		\$64,028,898				\$20,220,141				\$84,249,039		
34	4/20/2013		\$63,623,892				\$20,974,282				\$84,598,174		
35	4/27/2013		\$61,743,623				\$20,267,388				\$82,011,011		
36	5/4/2013		\$64,851,962				\$20,642,982				\$85,494,944		
37	5/11/2013		\$65,472,556				\$19,140,768				\$84,613,324		
38	5/18/2013		\$60,572,658				\$18,342,814				\$78,915,472		
39	5/25/2013		\$58,959,028				\$18,618,060				\$77,577,088		
40	6/1/2013		\$57,409,086				\$19,014,645				\$76,423,731		
41	6/8/2013		\$59,845,545				\$20,527,958				\$80,373,503		
42	6/15/2013		\$57,021,498				\$19,386,186				\$76,407,684		

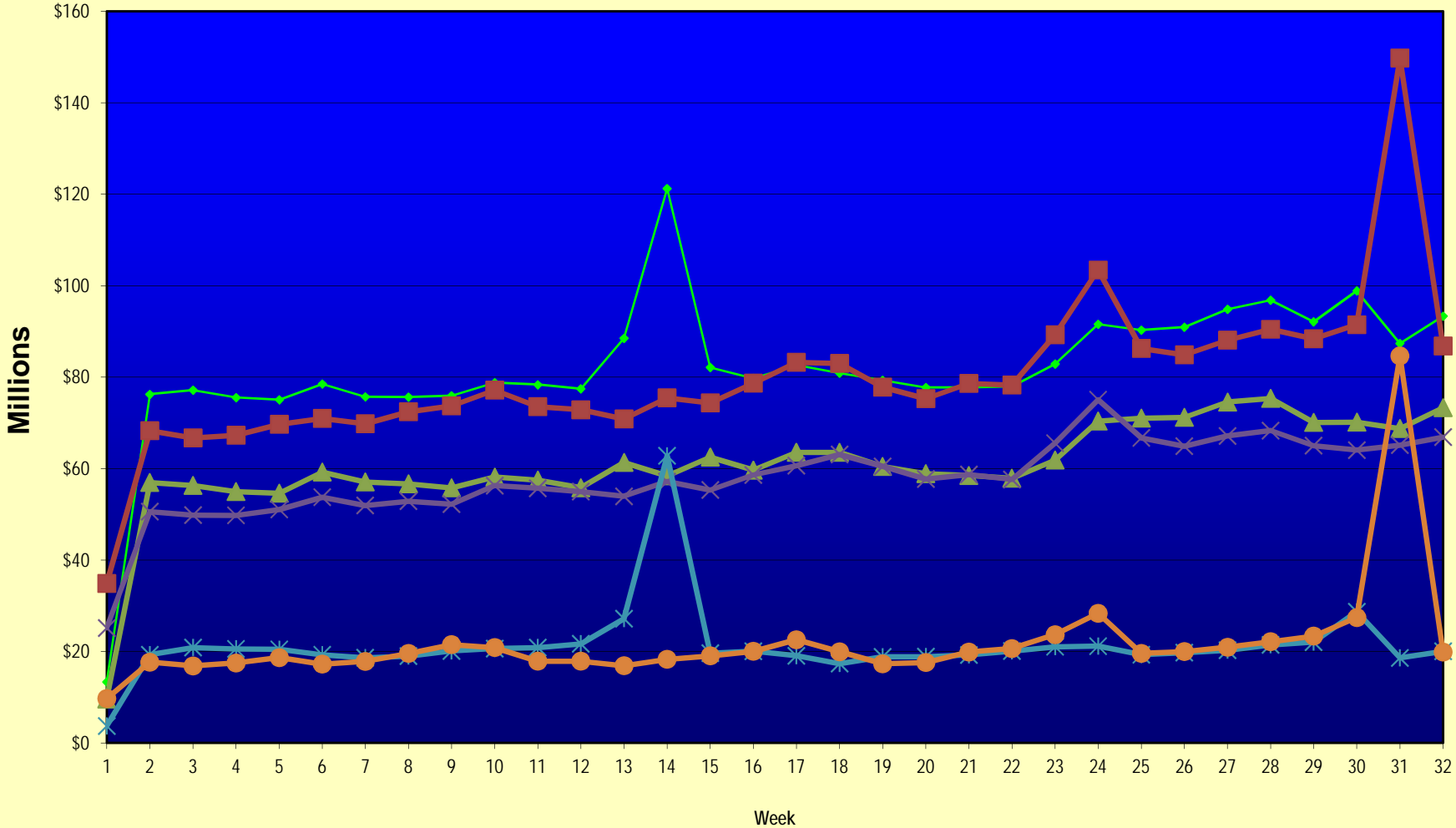
Note: Week 1 is not a full week of sales as this report is prepared on a Fiscal Year basis.

Texas Lottery Commission
Fiscal Year Over Year Change in Sales
Unaudited
FY 2013 Compared to FY 2012

Week	FY 2013 Week Ending	INSTANT TICKETS				DRAW GAMES				TOTAL SALES			
		FY 2013	FY 2012	Difference	% change - Cumulative Sales	FY 2013	FY 2012	Difference	% change - Cumulative Sales	FY 2013	FY 2012	Difference	% change - Cumulative Sales
43	6/22/2013		\$57,892,076				\$17,594,154				\$75,486,230		
44	6/29/2013		\$57,497,435				\$18,153,658				\$75,651,093		
45	7/6/2013		\$60,345,000				\$19,059,152				\$79,404,152		
46	7/13/2013		\$57,683,321				\$18,751,043				\$76,434,364		
47	7/20/2013		\$57,083,343				\$18,769,201				\$75,852,544		
48	7/27/2013		\$54,006,781				\$18,934,103				\$72,940,884		
49	8/3/2013		\$56,557,409				\$20,206,705				\$76,764,114		
50	8/10/2013		\$57,799,452				\$22,832,120				\$80,631,572		
51	8/17/2013		\$54,845,724				\$25,435,624				\$80,281,348		
52	8/24/2013		\$55,661,277				\$17,524,474				\$73,185,751		
	8/31/2013		\$47,363,984				\$14,929,528				\$62,293,512		
Total thru Current Week		\$1,943,850,272	\$1,855,876,806	\$87,973,466	4.7%	\$680,669,110	\$695,349,578	(\$14,680,468)	-2.1%	\$2,624,519,382	\$2,551,226,384	\$73,292,998	2.9%
Fiscal Year Total		\$1,943,850,272	\$3,086,141,354			\$680,669,110	\$1,104,674,559			\$2,624,519,382	\$4,190,815,913		

** FY 2012 includes 3 days; FY 2013 includes 1 day.

Texas Lottery Commission Fiscal Year Over Year Change in Sales



◆ Total Sales 2013
 ■ Total Sales 2012
 ▲ Instant Tickets 2013
 ✕ Instant Tickets 2012
 ✕ Draw Games 2013
 ● Draw Games 2012

Note: Week 1 is not a full week of sales as this report is prepared on a Fiscal Year basis.

Texas Lottery Commission
Instant Tickets by Price Point
 Sales, Prize Expense, Sales Contribution and Payout Percentage With Year Over Year Changes
 Unaudited

Fiscal Year	Price Point	# of Active Games	FY Sales	% of Instant Ticket Sales	Year over Year Change in Sales	FY Prize Expense	Year over Year Change in Prize Expense	FY Sales Contribution	Year over Year Change in Contribution	Average Prize Payout %	Year over Year Change in Payout %
2012	\$1.00	32	135,928,448	7.3%		82,853,739		53,074,709		61.0%	0.3%
thru	\$2.00	33	250,963,776	13.5%		163,223,766		87,740,010		65.0%	-0.8%
4/7/2012	\$3.00	17	223,302,870	12.0%		146,392,510		76,910,360		65.6%	-0.1%
	\$5.00	43	602,475,055	32.5%		410,099,745		192,375,310		68.1%	0.2%
	\$7.00	4	18,186,847	1.0%		12,366,889		5,819,958		68.0%	0.0%
	\$10.00	17	303,250,230	16.3%		214,110,020		89,140,210		70.6%	-0.6%
	\$20.00	6	244,004,680	13.1%		182,207,068		61,797,612		74.7%	0.0%
	\$50.00	2	77,764,900	4.2%		60,388,665		17,376,235		77.7%	0.0%
Total		154	\$1,855,876,806			\$1,271,642,403		\$584,234,403		68.5%	0.0%
2013	\$1.00	30	118,100,766	6.1%		72,230,076		45,870,690		61.2%	0.9%
thru	\$2.00	35	249,153,020	12.8%		161,958,119		87,194,901		65.0%	-0.1%
4/6/2013	\$3.00	19	233,025,603	12.0%		152,715,705		80,309,898		65.5%	0.0%
	\$5.00	51	606,589,245	31.2%		412,593,643		193,995,602		68.0%	0.0%
	\$7.00	2	16,203,768	0.8%		11,013,154		5,190,614		68.0%	0.0%
	\$10.00	12	359,567,200	18.5%		255,378,994		104,188,206		71.0%	0.2%
	\$20.00	8	270,187,420	13.9%		202,279,256		67,908,164		74.9%	0.1%
	\$50.00	3	91,023,250	4.7%		70,668,339		20,354,911		77.6%	0.0%
Total		160	\$1,943,850,272			\$1,338,837,285		\$605,012,987		68.9%	0.4%
Variance	\$1.00	-2	-17,827,682		-13.1%	-10,623,663	-12.8%	-7,204,019	-13.6%	0.21%	
2013 to	\$2.00	2	-1,810,756		-0.7%	-1,265,647	-0.8%	-545,109	-0.6%	-0.04%	
2012	\$3.00	2	9,722,733		4.4%	6,323,195	4.3%	3,399,538	4.4%	-0.02%	
	\$5.00	8	4,114,190		0.7%	2,493,898	0.6%	1,620,292	0.8%	-0.05%	
	\$7.00	-2	-1,983,079		-10.9%	-1,353,735	-10.9%	-629,344	-10.8%	-0.03%	
	\$10.00	-5	56,316,970		18.6%	41,268,974	19.3%	15,047,996	16.9%	0.42%	
	\$20.00	2	26,182,740		10.7%	20,072,188	11.0%	6,110,552	9.9%	0.19%	
	\$50.00	1	13,258,350		17.0%	10,279,673	17.0%	2,978,677	17.1%	-0.02%	
Total		6	\$87,973,466		4.7%	\$67,194,883	5.3%	\$20,778,583	3.6%	0.36%	

Notes - Instant Ticket Variances

Texas Lottery Commission
Instant Tickets by Price Point
Sales, Prize Expense, Sales Contribution and Payout Percentage With Year Over Year Changes
 Unaudited

			FY 2013		FY 2012	Difference
Sales	\$1 - \$7	1	\$1,223,072,402		\$1,230,856,996	-\$7,784,594
Prize Exp.	\$1 - \$7	1	\$810,510,697		\$814,936,650	-\$4,425,952
Sales Cont.	\$1 - \$7	1	\$412,561,705		\$415,920,347	-\$3,358,642
Prize Exp. %	\$1 - \$7	1	66.3%		66.2%	0.1%
			FY 2013		FY 2012	Difference
Sales	\$10 - \$50	2	\$720,777,870		\$625,019,810	\$95,758,060
Prize Exp.	\$10 - \$50	2	\$528,326,588		\$456,705,753	\$71,620,835
Sales Cont.	\$10 - \$50	1	\$192,451,282		\$168,314,057	\$24,137,225
Prize Exp. %	\$10 - \$50	2	73.3%		73.1%	0.2%
			FY 2013		FY 2012	Difference
Sales	Instant		\$1,943,850,272		\$1,855,876,806	\$87,973,466
Prize Exp.	Instant		\$1,338,837,285		\$1,271,642,403	\$67,194,883
Sales Cont.	Instant		\$605,012,987		\$584,234,403	\$20,778,583
Prize Exp. %	Instant		68.9%		68.5%	0.4%

			FY 2013		FY 2012	Difference
Sales	\$1 - \$10		\$1,582,639,602		\$1,534,107,226	\$48,532,376
Prize Exp.	\$1 - \$10		\$1,065,889,691		\$1,029,046,669	\$36,843,022
Sales Cont.	\$1 - \$10		\$516,749,911		\$505,060,557	\$11,689,354
Prize Exp. %	\$1 - \$10		67.3%		67.1%	0.3%
			FY 2013		FY 2012	Difference
Sales	\$20 - \$50		\$361,210,670		\$321,769,580	\$39,441,090
Prize Exp.	\$20 - \$50		\$272,947,594		\$242,595,733	\$30,351,861
Sales Cont.	\$20 - \$50		\$88,263,076		\$79,173,847	\$9,089,229
Prize Exp. %	\$20 - \$50		75.6%		75.4%	0.2%
			FY 2013		FY 2012	Difference
Sales	Instant		\$1,943,850,272		\$1,855,876,806	\$87,973,466
Prize Exp.	Instant		\$1,338,837,285		\$1,271,642,403	\$67,194,883
Sales Cont.	Instant		\$605,012,987		\$584,234,403	\$20,778,583
Prize Exp. %	Instant		68.9%		68.5%	0.4%

Texas Lottery Commission
 Weekly Sales Summary
 & Comparison to Previous Week
 Unaudited

	Week Ending 04/06/2013		Week Ending 03/30/2013			
	<u>THIS WEEK</u>	% of Sales	<u>LAST WEEK</u>	% of Sales	<u>\$ change</u>	<u>% change</u>
Total Sales	<u>\$93,319,046</u>		<u>\$87,355,613</u>		<u>\$5,963,433</u>	6.83%
Instant Tickets	<u>\$73,270,054</u>	78.5%	<u>\$68,758,522</u>	78.7%	<u>\$4,511,532</u>	6.56%
Lotto	\$2,599,044	2.8%	\$2,606,382	3.0%	-\$7,338	-0.28%
Pick 3	\$5,604,670	6.0%	\$5,301,324	6.1%	\$303,346	5.72%
Pick 3 Sum It Up	\$105,096	0.1%	\$99,384	0.1%	\$5,712	5.75%
Cash Five	\$1,113,516	1.2%	\$1,075,802	1.2%	\$37,714	3.51%
Texas Two Step	\$1,442,797	1.5%	\$995,045	1.1%	\$447,752	45.00%
Mega Millions	\$2,176,834	2.3%	\$1,902,475	2.2%	\$274,359	14.42%
Megaplier	\$503,159	0.5%	\$458,139	0.5%	\$45,020	9.83%
Daily 4	\$1,610,636	1.7%	\$1,499,789	1.7%	\$110,848	7.39%
Daily 4 Sum It Up	\$103,097	0.1%	\$95,154	0.1%	\$7,943	8.35%
Powerball	\$2,793,981	3.0%	\$2,681,422	3.1%	\$112,559	4.20%
Power Play	\$377,717	0.4%	\$363,584	0.4%	\$14,133	3.89%
All or Nothing	\$1,618,445	1.7%	\$1,518,592	1.7%	\$99,853	6.58%
Total Draw Game Sales	<u>\$20,048,992</u>		<u>\$18,597,091</u>		<u>\$1,451,901</u>	7.81%

* Totals may not sum due to rounding.

Texas Lottery Commission
Weekly Sales Summary
Unaudited

INSTANT TICKETS
TOP TEN SELLING GAMES

For the Week Ending: 04/06/13

Rank	Price Point	Game	Sales (Millions)
1	\$ 10	10X MEGA MONEY	\$ 6.679
2	\$ 20	CASH EXCITEMENT	\$ 4.110
3	\$ 5	SIZZLIN' 7'S	\$ 3.762
4	\$ 5	MAXIMUM JACKPOT	\$ 3.170
5	\$ 5	\$75,000 CASHWORD-O-RAMA	\$ 3.125
6	\$ 5	GREAT 8'S	\$ 2.812
7	\$ 3	LOTERIA TEXAS	\$ 2.764
8	\$ 10	\$200 MILLION CASH SPECTACULAR	\$ 2.522
9	\$ 20	\$500 MILLION EXTREME CASH BLAST	\$ 2.495
10	\$ 5	FUN 5S	\$ 2.338

Texas Lottery Commission
Prize Payout Tracking Report
Unaudited

Through Week Ending 04/06/13

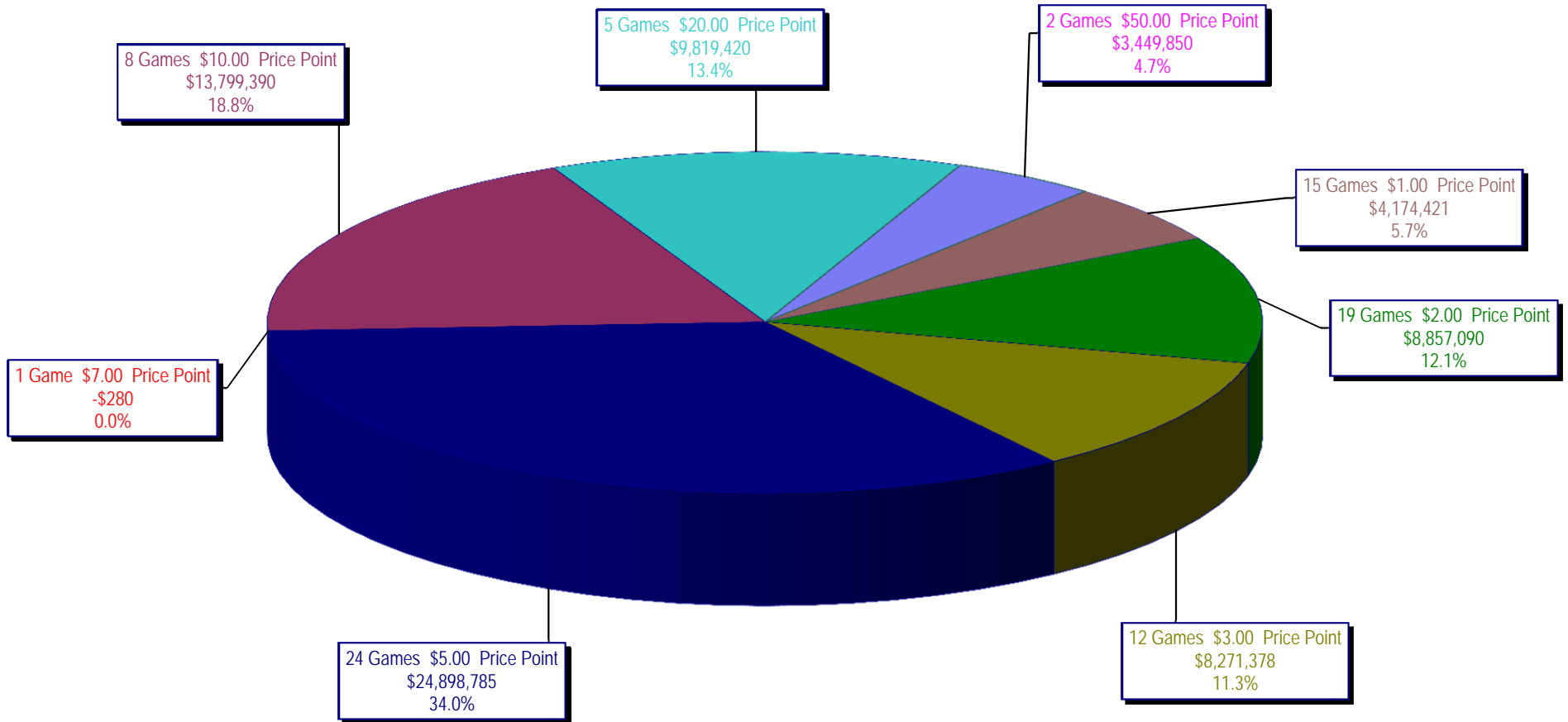
Draw Game Sales

		FY Sales Through Week Ending 4/6/2013		FY Prize Expense Through Week Ending 4/6/2013	Actual* Prize Payout	Base Payout (Prize Pool)
Lotto	\$	90,996,765	\$	71,273,281	78.33%	50.00%
Pick 3		161,836,578		81,859,670	50.58%	50.00%
Pick 3 Sum It Up		3,039,988		1,535,494	50.51%	50.00%
Cash Five		33,923,162		16,963,470	50.01%	50.00%
Texas Two Step		35,531,282		17,858,429	50.26%	50.00%
Mega Millions		61,815,136		30,160,064	48.79%	50.00%**
Megaplier		14,545,191		6,787,952	46.67%	N/A
Daily 4		43,754,339		22,158,450	50.64%	50.00%
Daily 4 Sum It Up		2,865,124		1,210,899	42.26%	50.00%
Powerball		163,607,909		84,660,043	51.75%	50.00%**
Power Play		17,180,380		9,555,982	55.62%	N/A
All or Nothing		51,573,257		29,513,040	57.23%	50.00%
Totals	\$	680,669,110	\$	373,536,773	54.88%	

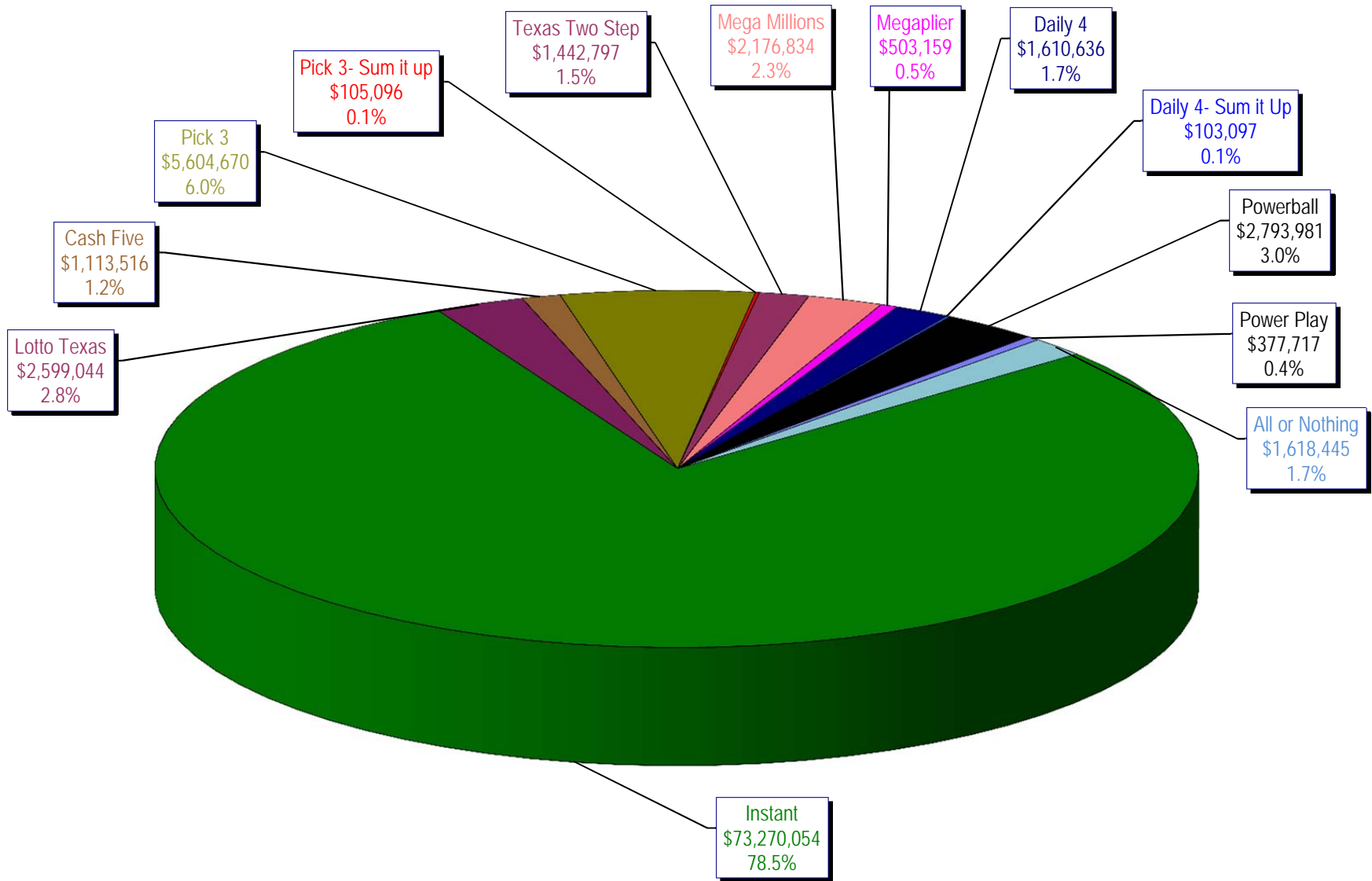
* Before Unclaimed Prizes

** Estimated; depends on # of guaranteed prizes won in Texas

Texas Lottery Commission
Instant Ticket Sales
For the Week Ending 04/06/13
(Unaudited)



**Texas Lottery Commission
All Game Sales
For the Week Ending 04/06/13
(Unaudited)**



Texas Lottery Commission - Weekly Sales Summary for FY 2013 (Unaudited)

Week Ended	Instant Games	New Games & Dates	Lotto Texas	Jackpot W S	Pick 3	Pick 3 Sum It Up	Cash Five	Texas Two Step	Jackpot M TH	Mega Millions	Jackpot T F	Megaplier	Daily 4	Daily 4 Sum It Up	Powerball	Jackpot W S	Power Play	All or Nothing	Total	Per Cap.
9/1/2012	56,975,312	1446 (\$1, N); 1444 (\$2, N) - 08/27/12	2,972,415	12 13	4,967,337	105,441	1,198,597	1,455,689	500 675	2,769,421	73 83	612,072	1,419,103	97,265	2,680,694	70 80	364,030		75,617,375	2.95
9/8/2012	56,941,761	1440 (\$2, N); 1458 (\$3, N); 1459 (\$5, N) - 09/03/12	3,005,564	14 15	5,112,132	106,959	1,185,494	1,179,003	875 200	3,140,536	93 105	665,392	1,412,279	99,861	3,002,910	90 100	395,287		76,247,178	2.97
9/15/2012	56,302,875	1452 (\$3, N) - 09/10/12	2,999,894	16 17	4,785,209	95,720	1,118,519	894,412	225 200	2,684,227	120 12	580,869	1,290,478	90,795	3,373,296	110 125	417,470	2,526,342	77,160,105	3.01
9/22/2012	54,974,438	1460 (\$1, N); 1461 (\$5, N) - 09/17/12	2,986,898	18 19	4,611,684	89,173	1,091,440	986,264	225 325	1,874,336	15 12	452,082	1,258,191	86,390	4,122,790	149 174	479,344	2,531,686	75,544,715	2.94
9/29/2012	54,606,674	1462 (\$2, N); 1472 (\$10, N) - 09/24/12	3,047,519	20 21	4,708,250	90,752	1,077,739	1,313,257	475 625	1,884,366	14 21	452,334	1,278,847	87,211	3,779,359	200 40	445,091	2,297,966	75,069,364	2.92
10/6/2012	59,223,327	1464 (\$5, N) - 10/01/12	3,164,231	22 23	4,947,571	96,251	1,121,146	1,188,386	800 200	2,055,918	28 36	482,303	1,310,612	89,270	2,266,428	50 40	312,877	2,244,980	78,503,300	3.06
10/13/2012	57,075,606	1465 (\$1, N); 1466 (\$20, N) - 10/08/2012	3,133,742	24 25	4,793,793	89,663	1,074,687	865,146	225 200	2,163,099	45 53	492,614	1,261,858	84,585	2,241,120	50 60	309,684	2,128,476	75,714,073	2.95
10/20/2012	56,630,134	1467 (\$1, N); 1468 (\$5, N) - 10/15/12	3,172,820	26 27	4,959,071	88,413	1,074,980	970,100	225 325	1,984,966	61 12	466,730	1,296,602	84,868	2,447,518	70 80	328,436	2,124,439	75,629,077	2.95
10/27/2012	55,789,743	1469 (\$2, N); 1470 (\$10, N) - 10/22/2012	3,204,694	28 29	5,550,567	96,242	1,063,201	1,226,578	450 600	1,778,725	13 21	430,528	1,381,019	91,618	2,914,062	90 100	371,273	2,021,684	75,919,933	2.96
11/3/2012	58,142,777	1503 (\$5, N) - 10/29/2012	3,392,650	30 31	5,501,964	101,742	1,078,593	860,073	200 225	1,950,117	27 32	462,385	1,393,099	93,773	3,466,242	110 124	424,170	1,913,200	78,780,785	3.07
11/10/2012	57,484,804	1475 (\$1, N); 1476 (\$3, N) - 11/05/2012	3,061,999	32 4	5,468,924	100,767	1,083,928	837,666	200 200	1,783,099	12 13	430,343	1,402,194	94,451	4,246,246	143 168	491,538	1,861,718	78,347,676	3.05
11/17/2012	55,805,228	1477 (\$2, N); 1478 (\$5, N) - 11/12/2012	2,599,190	5 6	5,248,059	91,989	1,059,723	920,319	225 300	1,841,571	19 26	440,783	1,345,121	88,391	5,638,425	185 214	615,323	1,771,812	77,465,933	3.02
11/24/2012	61,331,977	1394 (\$50, N) - 11/19/2012	2,768,876	7 8	5,086,879	91,409	1,021,878	883,407	425 200	2,003,365	33 41	472,723	1,300,693	85,037	10,768,045	250 325	1,053,006	1,637,536	88,504,830	3.45
12/1/2012	58,420,598	0	3,304,053	9 10	5,123,778	97,511	1,086,916	925,805	225 275	2,358,380	49 12	533,175	1,319,684	92,240	43,264,700	550 40	2,894,606	1,797,096	121,218,541	4.72
12/8/2012	62,489,745	1479 (\$1, N); 1485 (\$5, N) - 12/03/12	2,971,837	11 12	5,374,747	101,479	1,129,990	1,359,739	425 575	1,861,503	13 20	445,171	1,391,477	94,879	2,832,293	50 40	362,145	1,704,896	82,119,900	3.20
12/15/2012	59,661,880	0	3,087,087	13 14	5,221,374	98,173	1,104,769	1,928,422	775 1,000	1,933,357	27 35	456,193	1,398,647	88,811	2,808,938	50 40	364,704	1,574,508	79,726,862	3.11
12/22/2012	63,556,886	1481 (\$1, N); 1482 (\$2, N); 1483 (\$5, N) - 12/17/12	3,076,409	15 16	5,170,946	94,116	1,108,894	1,415,548	1,250 200	1,774,922	12 12	431,471	1,385,861	87,012	2,658,349	50 40	349,278	1,531,847	82,641,539	3.22
12/29/2012	63,547,886	0	2,869,329	17 18	4,868,470	90,224	1,041,264	922,869	200 225	1,670,747	18 25	400,587	1,289,758	79,651	2,413,294	50 40	324,222	1,389,460	80,907,760	3.15
1/5/2013	60,452,721	1484 (\$5, N) - 12/31/12	2,962,822	19 20	5,157,831	97,210	1,098,429	1,363,512	350 500	1,865,613	30 39	443,570	1,396,145	87,787	2,524,666	50 60	339,142	1,496,322	79,285,768	3.09
1/12/2013	58,862,997	1386 (\$2, N); 1536 (\$10, N) - 01/07/2013	2,588,023	4 5	4,974,232	92,872	1,079,444	1,622,926	700 900	2,036,427	47 55	471,998	1,345,510	81,625	2,755,940	70 80	349,383	1,480,788	77,742,164	3.03
1/19/2013	58,494,057	01/14/2013; 1538 (\$3, N) - 01/17/2013;	2,670,967	6 7	5,115,846	99,182	1,069,099	906,490	200 225	2,214,850	62 70	498,541	1,374,543	87,921	3,323,356	90 100	408,226	1,488,984	77,752,061	3.03
1/26/2013	57,871,744	0	2,733,016	8 9	4,936,726	91,918	1,047,379	1,178,148	325 475	2,367,780	80 89	526,051	1,401,635	87,842	3,808,150	110 130	454,194	1,460,376	77,964,959	3.04
2/2/2013	61,846,715	1489 (\$2, N); 1486 (\$20, N) - 01/28/2013	2,754,143	10 11	5,220,197	96,971	1,066,170	1,109,445	650 200	1,731,470	12 13	423,745	1,460,770	96,289	5,037,974	151 176	570,151	1,465,010	82,879,050	3.23
2/9/2013	70,374,906	1510 (\$5, N) - 2/4/13; 1537 (\$3, N) - 2/5/13	2,893,143	12 13	5,374,541	101,660	1,110,298	1,053,776	225 325	1,785,080	19 12	435,112	1,483,017	96,782	4,830,224	208 40	551,530	1,468,476	91,558,544	3.57
2/16/2013	71,002,438	1451 (\$3, N); 1453 (\$5, N) - 2/11/13	2,910,257	14 15	5,397,708	99,470	1,091,337	1,430,815	475 650	1,770,362	13 20	431,516	1,502,480	92,250	2,752,192	50 60	366,358	1,450,452	90,297,635	3.52
2/23/2013	71,203,934	1496 (\$1, N); 1399 (\$2, N); 1495 (\$5, N) - 2/18/13; 1450 (\$2, N) - 2/22/13	2,716,839	16 4	5,343,246	99,957	1,083,596	1,849,824	850 1,100	1,759,469	26 12	429,347	1,473,358	91,116	3,067,388	70 80	394,142	1,421,708	90,933,923	3.54
3/2/2013	74,551,567	1474 (\$2, N) - 2/25/13	2,667,146	5 6	5,664,284	109,000	1,111,025	954,451	200 225	1,801,090	13 19	443,330	1,627,457	108,647	3,852,426	90 103	475,464	1,464,008	94,829,894	3.69
3/9/2013	75,360,138	1427 (\$1, N); 1497 (\$2, N); 1498 (\$5, N) - 3/4/13	2,711,613	7 8	5,687,827	106,680	1,111,266	1,024,080	325 200	1,914,669	26 33	465,588	1,592,687	105,438	4,739,852	123 150	558,580	1,429,484	96,807,901	3.77
3/16/2013	70,065,528	0	2,704,692	9 10	5,296,558	99,894	1,069,350	982,380	225 325	1,796,816	41 12	443,221	1,497,910	96,023	6,065,856	183 216	682,736	1,320,128	92,121,091	3.59
3/23/2013	70,137,284	1499 (\$1, N); 1500 (\$5, N) - 3/18/13	2,572,262	4 4	5,315,709	100,840	1,072,767	859,810	200 200	1,808,889	13 20	449,461	1,524,260	99,002	12,246,011	260 320	1,227,175	1,432,838	98,846,308	3.85
3/30/2013	68,758,522	0	2,606,382	5 6	5,301,324	99,384	1,075,802	995,045	225 300	1,902,475	26 34	458,139	1,499,789	95,154	2,681,422	40 50	363,584	1,518,592	87,355,613	3.40
4/6/2013	73,270,054	1501 (\$2, N); 1506 (\$3, N); 1471 (\$5, N) - 4/1/13	2,599,044	7 4	5,604,670	105,096	1,113,516	1,442,797	450 625	2,176,834	42 50	503,159	1,610,636	103,097	2,793,981	40 50	377,717	1,618,445	93,319,046	3.63
weekly change	6.6%		-0.3%		5.7%	5.7%	3.5%	45.0%		14.4%		9.8%	7.4%	8.3%	4.2%		3.9%	6.6%	6.8%	
SALES			SALES		SALES	SALES	SALES	SALES		SALES		SALES	SALES	SALES	SALES		SALES	SALES	SALES	% of Sales
Calendar Year to date	4,077,253,084		201,742,602		347,319,186	6,928,922	77,991,281	80,011,104		219,939,578		44,054,539	91,395,023	6,219,950	294,071,001		34,178,479	51,573,257	5,532,678,005	100.0%
Fiscal Year to date 2013	1,943,850,272		90,996,765		161,836,578	3,039,988	33,923,162	35,531,282		61,815,136		14,545,191	43,754,339	2,865,124	163,607,909		17,180,380	51,573,257	2,624,519,382	100.0%