



*WEEKLY SALES SUMMARY*

Unaudited

**Week Ending: 04/07/2012**

Texas Lottery Commission  
Fiscal Year to Date Sales Comparison  
Unaudited

Through the week ending 04/07/2012 (32 weeks)

Sales by Game	FY 2010 *	FY 2011 **	FY 2012	\$ Change		% Change	
				FY 2012 to FY 2010	FY 2012 to FY 2011 to	FY 2012 to FY 2010	FY 2012 to FY 2011
Instants	\$ 1,715,300,247	\$ 1,739,286,786	\$ 1,855,876,806	\$ 140,576,559	\$ 116,590,020	8.2%	6.7%
Lotto Texas	165,592,147	106,086,814	105,732,968	-59,859,179	-353,846	-36.1%	-0.3%
Pick 3	165,926,623	167,406,586	164,040,910	-1,885,714	-3,365,676	-1.1%	-2.0%
Pick 3 Sum It Up	3,348,963	3,380,776	3,393,898	44,936	13,122	1.3%	0.4%
Cash Five	41,040,456	39,490,932	39,822,367	-1,218,089	331,436	-3.0%	0.8%
Texas Two Step	27,844,370	28,824,367	40,501,011	12,656,641	11,676,644	45.5%	40.5%
Mega Millions	109,471,911	124,464,031	159,628,844	50,156,933	35,164,813	45.8%	28.3%
Megaplier	24,570,461	25,155,421	29,176,166	4,605,705	4,020,745	18.7%	16.0%
Daily 4	32,168,840	35,061,408	38,986,029	6,817,189	3,924,622	21.2%	11.2%
Daily 4 Sum It Up	3,010,045	2,716,668	2,864,095	-145,951	147,427	-4.8%	5.4%
Powerball	17,258,220	56,198,417	94,407,186	77,148,966	38,208,769	-	68.0%
Power Play	4,090,977	13,208,470	16,796,106	12,705,129	3,587,636	-	27.2%
<b>Total</b>	<b>\$ 2,309,623,259</b>	<b>\$ 2,341,280,674</b>	<b>\$ 2,551,226,384</b>	<b>\$ 241,603,126</b>	<b>\$ 209,945,710</b>	<b>10.5%</b>	<b>9.0%</b>

\* 2 extra days

\*\* 1 extra day

Texas Lottery Commission  
Fiscal Year to Date Cumulative Average Sales Comparison  
Unaudited

Through the week ending 04/07/2012 (32 weeks)

Sales by Game	FY 2010	FY 2011	FY 2012
Instant	\$ 7,726,578	\$ 7,870,076	\$ 8,435,804
Lotto Texas	745,911	480,031	480,604
Pick 3	747,417	757,496	745,640
Pick 3 Sum It Up	15,085	15,298	15,427
Cash Five	184,867	178,692	181,011
Texas Two Step	125,425	130,427	184,096
Mega Millions	493,117	563,186	725,586
Megaplier	110,678	113,825	132,619
Daily 4	144,905	158,649	177,209
Daily 4 Sum It Up	13,559	12,293	13,019
Powerball	246,546 *	254,291	429,124
Power Play	58,443 *	59,767	76,346
<b>Total</b>	<b>\$ 10,612,529</b>	<b>\$ 10,594,030</b>	<b>\$ 11,596,484</b>

thru 04/10/2010  
222 days

thru 04/09/2011  
221 days

thru 04/07/2012  
220 days

\* 70 days

Texas Lottery Commission  
Fiscal Year Over Year Change in Sales  
Unaudited  
FY 2012 Compared to FY 2011

Week	FY 2012 Week Ending	INSTANT TICKETS				ON-LINE GAMES				TOTAL SALES			
		FY 2012	FY 2011	Difference	% change - Cumulative Sales	FY 2012	FY 2011	Difference	% change - Cumulative Sales	FY 2012	FY 2011	Difference	% change - Cumulative Sales
1	9/3/2011**	\$25,147,181	\$31,659,033	(\$6,511,852)	-20.6%	\$9,704,561	\$11,430,717	(\$1,726,156)	-15.1%	\$34,851,742	\$43,089,750	(\$8,238,008)	-19.1%
2	9/10/2011	\$50,591,068	\$48,912,598	\$1,678,470	3.4%	\$17,681,853	\$16,398,160	\$1,283,693	7.8%	\$68,272,921	\$65,310,758	\$2,962,163	4.5%
3	9/17/2011	\$49,835,063	\$48,988,241	\$846,822	1.7%	\$16,842,326	\$17,166,827	(\$324,501)	-1.9%	\$66,677,389	\$66,155,068	\$522,321	0.8%
4	9/24/2011	\$49,777,138	\$48,471,310	\$1,305,828	2.7%	\$17,504,800	\$15,623,813	\$1,880,987	12.0%	\$67,281,938	\$64,095,123	\$3,186,815	5.0%
5	10/1/2011	\$51,040,274	\$50,145,138	\$895,136	1.8%	\$18,653,100	\$16,453,939	\$2,199,161	13.4%	\$69,693,374	\$66,599,077	\$3,094,297	4.6%
6	10/8/2011	\$53,715,157	\$50,918,591	\$2,796,566	5.5%	\$17,225,680	\$16,974,963	\$250,717	1.5%	\$70,940,837	\$67,893,554	\$3,047,283	4.5%
7	10/15/2011	\$51,942,121	\$49,096,011	\$2,846,110	5.8%	\$17,854,980	\$16,661,904	\$1,193,077	7.2%	\$69,797,101	\$65,757,915	\$4,039,187	6.1%
8	10/22/2011	\$52,837,769	\$50,158,946	\$2,678,823	5.3%	\$19,558,519	\$17,374,460	\$2,184,060	12.6%	\$72,396,288	\$67,533,406	\$4,862,883	7.2%
9	10/29/2011	\$52,206,644	\$49,775,287	\$2,431,357	4.9%	\$21,504,565	\$18,402,209	\$3,102,356	16.9%	\$73,711,209	\$68,177,496	\$5,533,713	8.1%
10	11/5/2011	\$56,265,310	\$53,337,848	\$2,927,462	5.5%	\$20,870,086	\$17,321,908	\$3,548,179	20.5%	\$77,135,396	\$70,659,756	\$6,475,641	9.2%
11	11/12/2011	\$55,682,645	\$52,285,479	\$3,397,166	6.5%	\$17,862,404	\$16,388,690	\$1,473,714	9.0%	\$73,545,049	\$68,674,169	\$4,870,880	7.1%
12	11/19/2011	\$54,978,079	\$52,424,036	\$2,554,043	4.9%	\$17,879,985	\$16,138,022	\$1,741,963	10.8%	\$72,858,064	\$68,562,058	\$4,296,006	6.3%
13	11/26/2011	\$53,942,448	\$51,262,518	\$2,679,930	5.2%	\$16,877,145	\$15,967,075	\$910,070	5.7%	\$70,819,593	\$67,229,593	\$3,590,000	5.3%
14	12/3/2011	\$57,153,469	\$56,385,259	\$768,210	1.4%	\$18,298,636	\$17,553,175	\$745,461	4.2%	\$75,452,105	\$73,938,434	\$1,513,671	2.0%
15	12/10/2011	\$55,318,284	\$56,540,048	(\$1,221,764)	-2.2%	\$19,033,326	\$17,703,352	\$1,329,975	7.5%	\$74,351,610	\$74,243,400	\$108,211	0.1%
16	12/17/2011	\$58,612,629	\$57,699,991	\$912,638	1.6%	\$20,045,279	\$18,465,282	\$1,579,997	8.6%	\$78,657,908	\$76,165,273	\$2,492,635	3.3%
17	12/24/2011	\$60,628,256	\$59,800,480	\$827,776	1.4%	\$22,572,986	\$19,635,771	\$2,937,215	15.0%	\$83,201,242	\$79,436,251	\$3,764,991	4.7%
18	12/31/2011	\$63,065,007	\$61,423,121	\$1,641,886	2.7%	\$19,948,521	\$26,122,257	(\$6,173,736)	-23.6%	\$83,013,528	\$87,545,378	(\$4,531,850)	-5.2%
19	1/7/2012	\$60,479,896	\$60,976,653	(\$496,757)	-0.8%	\$17,331,888	\$33,521,570	(\$16,189,682)	-48.3%	\$77,811,784	\$94,498,223	(\$16,686,439)	-17.7%
20	1/14/2012	\$57,689,526	\$50,099,433	\$7,590,093	15.2%	\$17,568,732	\$17,114,637	\$454,096	2.7%	\$75,258,258	\$67,214,070	\$8,044,189	12.0%
21	1/21/2012	\$58,704,854	\$53,143,646	\$5,561,208	10.5%	\$19,886,540	\$18,091,208	\$1,795,332	9.9%	\$78,591,394	\$71,234,854	\$7,356,540	10.3%
22	1/28/2012	\$57,611,325	\$54,096,128	\$3,515,197	6.5%	\$20,641,697	\$17,446,156	\$3,195,542	18.3%	\$78,253,022	\$71,542,284	\$6,710,739	9.4%
23	2/4/2012	\$65,553,366	\$53,433,592	\$12,119,774	22.7%	\$23,689,855	\$17,388,581	\$6,301,274	36.2%	\$89,243,221	\$70,822,173	\$18,421,048	26.0%
24	2/11/2012	\$75,070,485	\$60,277,094	\$14,793,391	24.5%	\$28,361,583	\$18,233,038	\$10,128,545	55.6%	\$103,432,068	\$78,510,132	\$24,921,936	31.7%
25	2/18/2012	\$66,679,947	\$61,536,763	\$5,143,184	8.4%	\$19,588,615	\$19,387,518	\$201,097	1.0%	\$86,268,562	\$80,924,281	\$5,344,281	6.6%
26	2/25/2012	\$64,868,899	\$59,046,203	\$5,822,696	9.9%	\$19,965,388	\$20,054,404	(\$89,016)	-0.4%	\$84,834,287	\$79,100,607	\$5,733,680	7.2%
27	3/3/2012	\$67,135,065	\$60,537,060	\$6,598,005	10.9%	\$20,947,181	\$19,478,807	\$1,468,374	7.5%	\$88,082,246	\$80,015,867	\$8,066,379	10.1%
28	3/10/2012	\$68,299,006	\$59,997,361	\$8,301,645	13.8%	\$22,152,639	\$19,601,658	\$2,550,982	13.0%	\$90,451,645	\$79,599,019	\$10,852,627	13.6%
29	3/17/2012	\$65,013,692	\$57,835,554	\$7,178,138	12.4%	\$23,351,718	\$21,189,563	\$2,162,155	10.2%	\$88,365,410	\$79,025,117	\$9,340,293	11.8%
30	3/24/2012	\$64,035,255	\$57,911,940	\$6,123,315	10.6%	\$27,416,609	\$29,729,651	(\$2,313,043)	-7.8%	\$91,451,864	\$87,641,591	\$3,810,273	4.3%
31	3/31/2012	\$65,135,991	\$60,407,139	\$4,728,852	7.8%	\$84,628,987	\$19,519,264	\$65,109,724	333.6%	\$149,764,978	\$79,926,403	\$69,838,576	87.4%
32	4/7/2012	\$66,860,957	\$60,704,285	\$6,156,672	10.1%	\$19,899,400	\$19,455,317	\$444,083	2.3%	\$86,760,357	\$80,159,602	\$6,600,755	8.2%
33	4/14/2012		\$57,663,398				\$17,866,867				\$75,530,265		
34	4/21/2012		\$56,740,216				\$17,429,326				\$74,169,542		
35	4/28/2012		\$58,042,011				\$17,104,548				\$75,146,559		
36	5/5/2012		\$66,509,159				\$17,744,833				\$84,253,992		
37	5/12/2012		\$53,769,716				\$17,783,942				\$71,553,658		
38	5/19/2012		\$53,704,228				\$18,623,882				\$72,328,110		
39	5/26/2012		\$52,310,134				\$19,115,921				\$71,426,055		
40	6/2/2012		\$53,256,725				\$18,462,603				\$71,719,328		
41	6/9/2012		\$54,293,614				\$17,213,019				\$71,506,633		
42	6/16/2012		\$52,688,230				\$17,534,413				\$70,222,643		

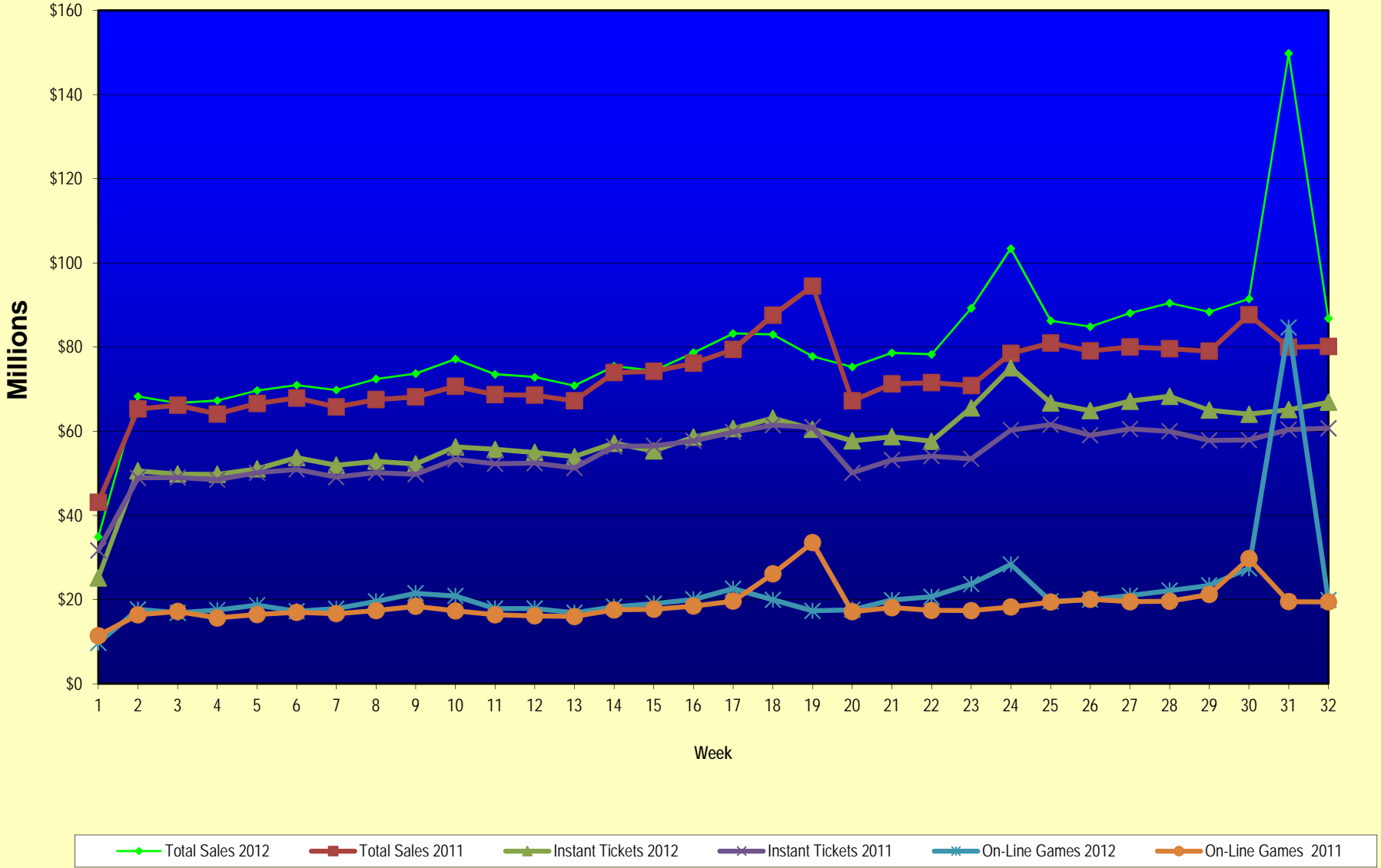
Note: Week 1 is not a full week of sales as this report is prepared on a Fiscal Year basis.

Texas Lottery Commission  
Fiscal Year Over Year Change in Sales  
Unaudited  
FY 2012 Compared to FY 2011

Week	FY 2012 Week Ending	INSTANT TICKETS				ON-LINE GAMES				TOTAL SALES			
		FY 2012	FY 2011	Difference	% change - Cumulative Sales	FY 2012	FY 2011	Difference	% change - Cumulative Sales	FY 2012	FY 2011	Difference	% change - Cumulative Sales
43	6/23/2012		\$53,174,595				\$17,086,937				\$70,261,532		
44	6/30/2012		\$53,687,509				\$18,406,785				\$72,094,294		
45	7/7/2012		\$53,054,685				\$16,211,989				\$69,266,674		
46	7/14/2012		\$51,161,290				\$16,945,733				\$68,107,023		
47	7/21/2012		\$50,807,750				\$17,362,213				\$68,169,963		
48	7/28/2012		\$51,277,179				\$18,870,764				\$70,147,943		
49	8/4/2012		\$53,320,489				\$20,922,034				\$74,242,523		
50	8/11/2012		\$50,914,022				\$19,467,124				\$70,381,146		
51	8/18/2012		\$49,905,898				\$17,419,045				\$67,324,943		
52	8/25/2012		\$49,424,242				\$16,837,474				\$66,261,716		
	8/31/2012		\$27,274,804				\$8,600,118				\$35,874,922		
Total thru Current Week		\$1,855,876,806	\$1,739,286,786	\$116,590,020	6.7%	\$695,349,578	\$601,993,888	\$93,355,690	15.5%	\$2,551,226,384	\$2,341,280,674	\$209,945,710	9.0%
Fiscal Year Total		\$1,855,876,806	\$2,842,266,680			\$695,349,578	\$969,003,455			\$2,551,226,384	\$3,811,270,135		

\*\* FY 2011 includes 4 days; FY 2012 includes 3 days

### Texas Lottery Commission Fiscal Year Over Year Change in Sales



Note: Week 1 is not a full week of sales as this report is prepared on a Fiscal Year basis.

Texas Lottery Commission  
**Instant Tickets by Price Point**  
Sales, Prize Expense, Sales Contribution and Payout Percentage With Year Over Year Changes  
Unaudited

Fiscal Year	Price Point	# of Active Games	FY Sales	% of Instant Ticket Sales	Year over Year Change in Sales	FY Prize Expense	Year over Year Change in Prize Expense	FY Sales Contribution	Year over Year Change in Contribution	Average Prize Payout %	Year over Year Change in Payout %
2011	\$1.00	31	129,899,888	7.5%		79,420,243		50,479,645		61.1%	1.7%
thru	\$2.00	31	245,061,872	14.1%		160,378,375		84,683,497		65.4%	0.5%
4/9/2011	\$3.00	18	210,313,761	12.1%		137,945,917		72,367,844		65.6%	0.0%
	\$5.00	42	542,363,385	31.2%		368,509,777		173,853,608		67.9%	-0.1%
	\$7.00	7	71,585,920	4.1%		48,668,156		22,917,764		68.0%	0.0%
	\$10.00	15	252,912,180	14.5%		179,462,151		73,450,029		71.0%	1.5%
	\$20.00	6	228,947,280	13.2%		170,076,762		58,870,518		74.3%	1.6%
	\$50.00	2	58,202,500	3.3%		45,201,086		13,001,414		77.7%	4.2%
<b>Total</b>		<b>152</b>	<b>\$1,739,286,786</b>			<b>\$1,189,662,467</b>		<b>\$549,624,319</b>		<b>68.4%</b>	<b>0.9%</b>
2012	\$1.00	32	135,928,448	7.3%		82,853,739		53,074,709		61.0%	0.3%
thru	\$2.00	33	250,963,776	13.5%		163,223,766		87,740,010		65.0%	-0.8%
4/7/2012	\$3.00	17	223,302,870	12.0%		146,392,510		76,910,360		65.6%	-0.1%
	\$5.00	43	602,475,055	32.5%		410,099,745		192,375,310		68.1%	0.2%
	\$7.00	4	18,186,847	1.0%		12,366,889		5,819,958		68.0%	0.0%
	\$10.00	17	303,250,230	16.3%		214,110,020		89,140,210		70.6%	-0.6%
	\$20.00	6	244,004,680	13.1%		182,207,068		61,797,612		74.7%	0.0%
	\$50.00	2	77,764,900	4.2%		60,388,665		17,376,235		77.7%	0.0%
<b>Total</b>		<b>154</b>	<b>\$1,855,876,806</b>			<b>\$1,271,642,403</b>		<b>\$584,234,403</b>		<b>68.5%</b>	<b>0.0%</b>
Variance	\$1.00	1	6,028,560		4.6%	3,433,496	4.3%	2,595,064	5.1%	-0.19%	
2012 to	\$2.00	2	5,901,904		2.4%	2,845,390	1.8%	3,056,514	3.6%	-0.41%	
2011	\$3.00	-1	12,989,109		6.2%	8,446,593	6.1%	4,542,516	6.3%	-0.03%	
	\$5.00	1	60,111,670		11.1%	41,589,969	11.3%	18,521,701	10.7%	0.12%	
	\$7.00	-3	-53,399,073		-74.6%	-36,301,267	-74.6%	-17,097,806	-74.6%	0.01%	
	\$10.00	2	50,338,050		19.9%	34,647,868	19.3%	15,690,182	21.4%	-0.35%	
	\$20.00	0	15,057,400		6.6%	12,130,306	7.1%	2,927,094	5.0%	0.39%	
	\$50.00	0	19,562,400		33.6%	15,187,579	33.6%	4,374,821	33.6%	-0.01%	
<b>Total</b>		<b>2</b>	<b>\$116,590,020</b>		<b>6.7%</b>	<b>\$81,979,935</b>	<b>6.9%</b>	<b>\$34,610,085</b>	<b>6.3%</b>	<b>0.12%</b>	

Notes - Instant Ticket Variances

Texas Lottery Commission  
**Instant Tickets by Price Point**  
**Sales, Prize Expense, Sales Contribution and Payout Percentage With Year Over Year Changes**  
 Unaudited

			FY 2012		FY 2011	Difference
Sales	\$1 - \$7		\$1,230,856,996		\$1,199,224,826	\$31,632,170
Prize Exp.	\$1 - \$7		\$814,936,650		\$794,922,468	\$20,014,182
Sales Cont.	\$1 - \$7		\$415,920,347		\$404,302,358	\$11,617,988
Prize Exp. %	\$1 - \$7		66.2%		66.3%	-0.1%
			FY 2012		FY 2011	Difference
Sales	\$10 - \$50		\$625,019,810		\$540,061,960	\$84,957,850
Prize Exp.	\$10 - \$50		\$456,705,753		\$394,739,999	\$61,965,754
Sales Cont.	\$10 - \$50		\$168,314,057		\$145,321,961	\$22,992,096
Prize Exp. %	\$10 - \$50		73.1%		73.1%	0.0%
			FY 2012		FY 2011	Difference
Sales	Instant		\$1,855,876,806		\$1,739,286,786	\$116,590,020
Prize Exp.	Instant		\$1,271,642,403		\$1,189,662,467	\$81,979,935
Sales Cont.	Instant		\$584,234,403		\$549,624,319	\$34,610,085
Prize Exp. %	Instant		68.5%		68.4%	0.1%

			FY 2012		FY 2011	Difference
Sales	\$1 - \$10		\$1,534,107,226		\$1,452,137,006	\$81,970,220
Prize Exp.	\$1 - \$10		\$1,029,046,669		\$974,384,619	\$54,662,050
Sales Cont.	\$1 - \$10		\$505,060,557		\$477,752,387	\$27,308,170
Prize Exp. %	\$1 - \$10		67.1%		67.1%	0.0%
			FY 2012		FY 2011	Difference
Sales	\$20 - \$50		\$321,769,580		\$287,149,780	\$34,619,800
Prize Exp.	\$20 - \$50		\$242,595,733		\$215,277,848	\$27,317,885
Sales Cont.	\$20 - \$50		\$79,173,847		\$71,871,932	\$7,301,915
Prize Exp. %	\$20 - \$50		75.4%		75.0%	0.4%
			FY 2012		FY 2011	Difference
Sales	Instant		\$1,855,876,806		\$1,739,286,786	\$116,590,020
Prize Exp.	Instant		\$1,271,642,403		\$1,189,662,467	\$81,979,935
Sales Cont.	Instant		\$584,234,403		\$549,624,319	\$34,610,085
Prize Exp. %	Instant		68.5%		68.4%	0.1%



Texas Lottery Commission  
**Weekly Sales Summary**  
**& Comparison to Previous Week**  
 Unaudited

	Week Ending 04/07/2012		Week Ending 03/31/2012			
	<u>THIS WEEK</u>	% of Sales	<u>LAST WEEK</u>	% of Sales	<u>\$ change</u>	<u>% change</u>
Total Sales	<u>\$86,760,357</u>		<u>\$149,764,978</u>		<u>-\$63,004,621</u>	-42.07%
Instant Tickets	<u>\$66,860,957</u>	77.1%	<u>\$65,135,991</u>	43.5%	<u>\$1,724,966</u>	2.65%
Lotto	\$3,544,179	4.1%	\$3,888,301	2.6%	-\$344,122	-8.85%
Pick 3	\$5,596,322	6.5%	\$5,439,674	3.6%	\$156,648	2.88%
Pick 3 Sum It Up	\$122,273	0.1%	\$122,076	0.1%	\$197	0.16%
Cash Five	\$1,346,414	1.6%	\$1,326,368	0.9%	\$20,046	1.51%
Texas Two Step	\$1,378,904	1.6%	\$1,004,583	0.7%	\$374,321	37.26%
Mega Millions	\$2,654,528	3.1%	\$60,266,900	40.2%	-\$57,612,372	-95.60%
Megaplier	\$594,458	0.7%	\$7,844,087	5.2%	-\$7,249,629	-92.42%
Daily 4	\$1,422,543	1.6%	\$1,312,333	0.9%	\$110,210	8.40%
Daily 4 Sum It Up	\$100,294	0.1%	\$97,380	0.1%	\$2,914	2.99%
Powerball	\$2,776,683	3.2%	\$2,949,562	2.0%	-\$172,879	-5.86%
Power Play	\$362,804	0.4%	\$377,724	0.3%	-\$14,920	-3.95%
Total Online Sales	<u>\$19,899,400</u>		<u>\$84,628,987</u>		<u>-\$64,729,587</u>	-76.49%

\* Totals may not sum due to rounding.

Texas Lottery Commission  
Weekly Sales Summary  
Unaudited

INSTANT TICKETS  
TOP TEN SELLING GAMES

For the Week Ending : 04/07/2012

Rank	Price Point	Game	Sales (Millions)
1	\$ 10	\$200 MILLION CASH SPECTACULAR	\$ 4.638
2	\$ 5	\$100,000 SILVER & GOLD	\$ 3.663
3	\$ 5	TEXAS 7'S	\$ 3.090
4	\$ 5	CASH FARMER	\$ 2.983
5	\$ 20	MAXIMUM MILLIONS	\$ 2.967
6	\$ 20	\$500 MILLION FRENZY	\$ 2.685
7	\$ 5	EMERALD 7'S	\$ 2.619
8	\$ 3	LOTERIA TEXAS	\$ 2.387
9	\$ 50	CASINO ACTION	\$ 2.351
10	\$ 5	MONTHLY BONUS	\$ 1.958

Texas Lottery Commission  
Prize Payout Tracking Report  
Unaudited

Through Week Ending 04/07/2012

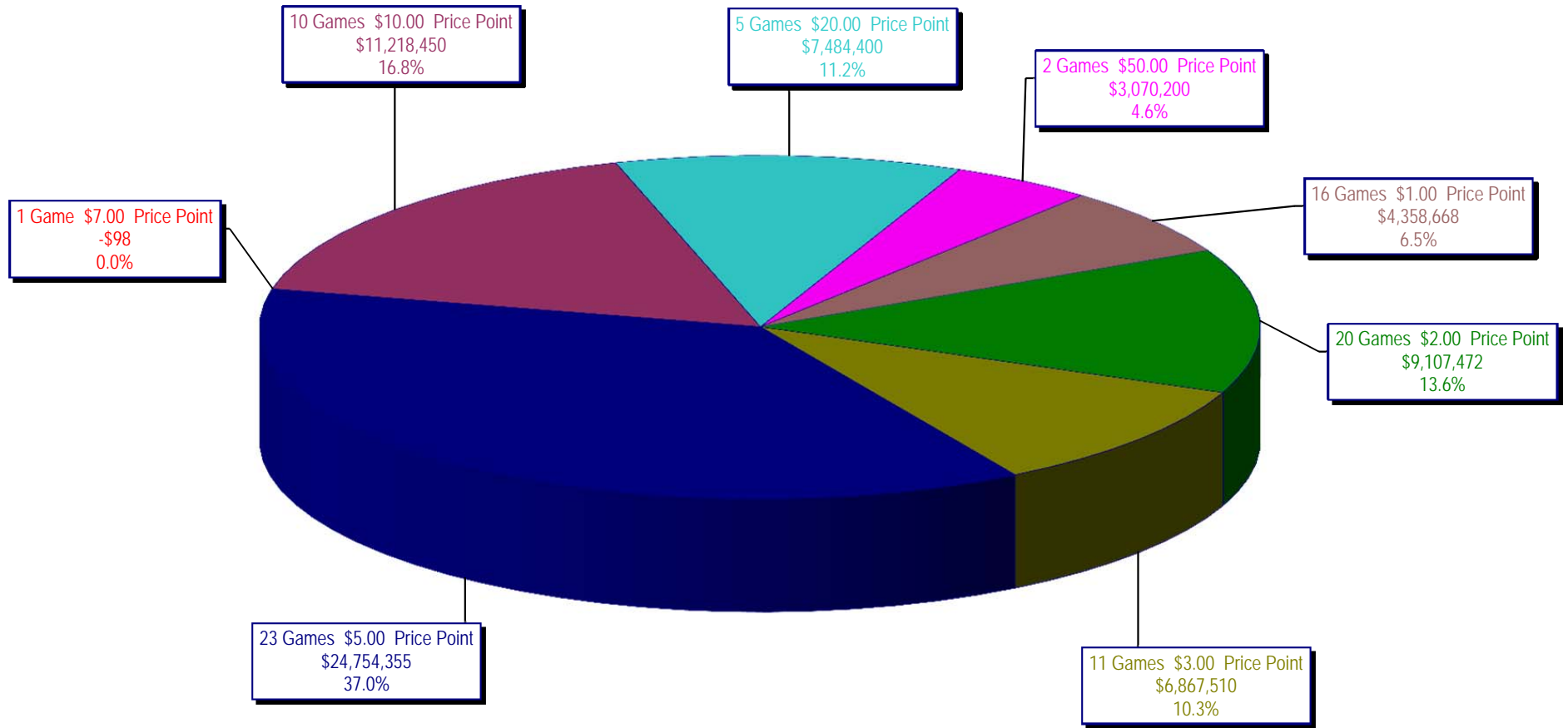
On-Line Sales

		FY Sales Through Week Ending 4/7/2012		FY Prize Expense Through Week Ending 4/7/2012	Actual* Prize Payout	Base Payout (Prize Pool)
Lotto	\$	105,732,968	\$	64,128,416	60.65%	50.00%
Pick 3		164,040,910		77,038,531	46.96%	50.00%
Pick 3 Sum It Up		3,393,898		1,615,487	47.60%	50.00%
Cash Five		39,822,367		20,641,308	51.83%	50.00%
Texas Two Step		40,501,011		20,240,960	49.98%	50.00%
Mega Millions		159,628,844		79,981,148	50.10%	50.00%**
Megaplier		29,176,166		13,458,754	46.13%	N/A
Daily 4		38,986,029		19,317,793	49.55%	50.00%
Daily 4 Sum It Up		2,864,095		1,263,628	44.12%	50.00%
Powerball		94,407,186		46,777,564	49.55%	50.00%**
Power Play		16,796,106		7,588,727	45.18%	N/A
<b>Totals</b>	\$	<b>695,349,578</b>	\$	<b>352,052,316</b>	<b>50.63%</b>	

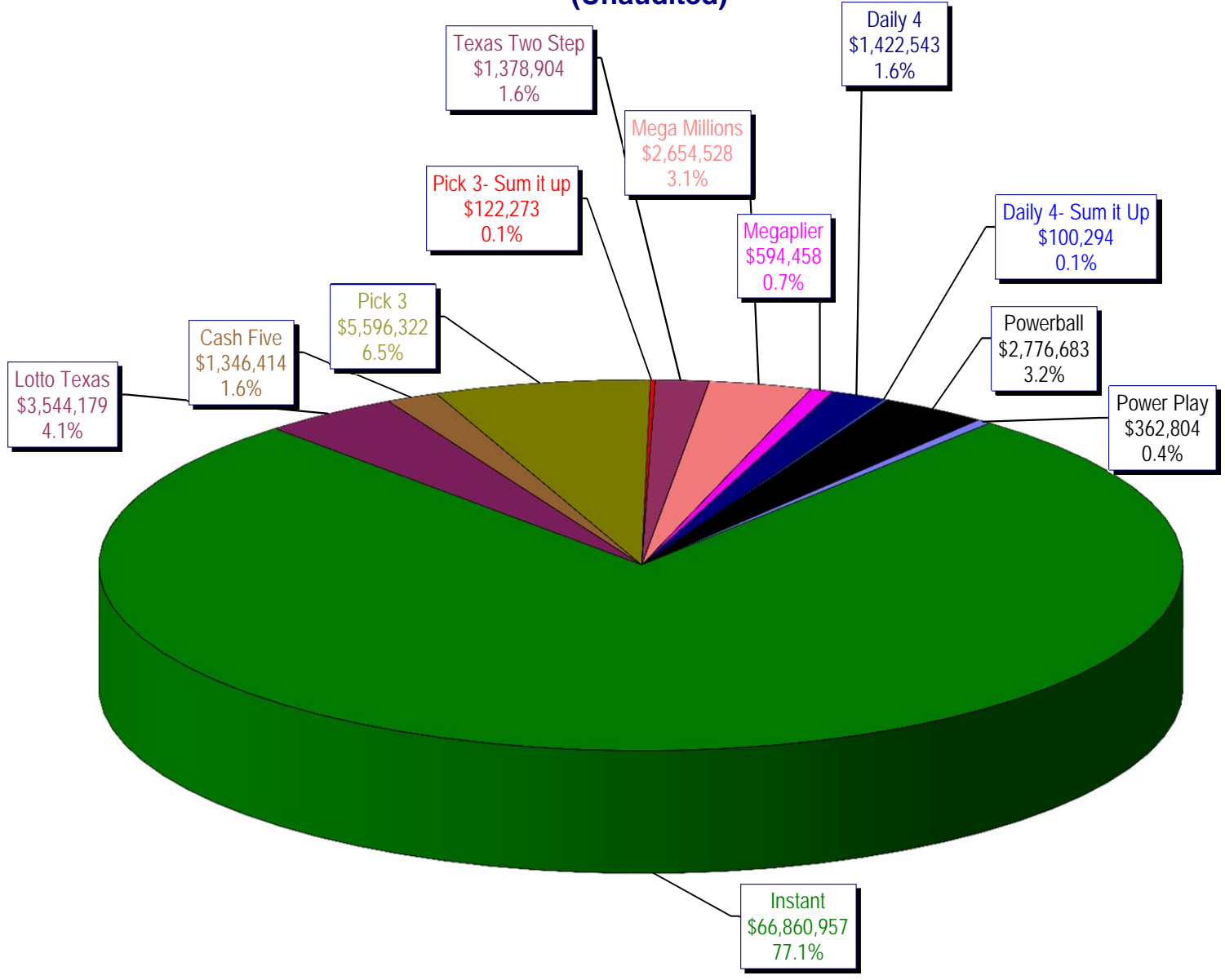
\* Before Unclaimed Prizes

\*\* Estimated; depends on # of guaranteed prizes won in Texas

Texas Lottery Commission  
Instant Ticket Sales  
For the Week Ending 04/07/2012  
(Unaudited)



**Texas Lottery Commission**  
**All Game Sales**  
**For the Week Ending 04/07/2012**  
**(Unaudited)**



Texas Lottery Commission - Weekly Sales Summary for FY 2012 (Unaudited)

Week Ended	Instant Games	New Games & Dates	Lotto Texas	Jackpot W	Jackpot S	Pick 3	Pick 3 Sum It Up	Cash Five	Texas Two Step	Jackpot M	Jackpot TH	Mega Millions	Jackpot T	Jackpot F	Megaplier	Daily 4	Daily 4 Sum It Up	Powerball	Jackpot W	Jackpot S	Power Play	Total	Per Cap.
9/3/2011	52,421,985	1340 (\$1,N); 1310 (\$2, N) - 08/29/11	3,710,974	23	24	5,228,940	100,997	1,239,134	989,988	225	300	2,248,664	21	29	539,246	1,221,178	93,318	2,401,555	75	91	530,686	70,726,664	2.81
9/10/2011	50,591,068	1360 (\$3, N) - 09/05/11	3,329,350	25	4	5,103,026	99,259	1,198,563	935,771	450	200	2,387,766	37	44	557,225	1,180,505	88,443	2,295,315	107	20	506,631	68,272,921	2.71
9/17/2011	49,835,063	0	3,031,798	5	6	4,953,079	100,990	1,210,562	961,592	225	300	2,801,526	54	65	626,459	1,125,230	83,532	1,560,522	25	20	387,037	66,677,389	2.64
9/24/2011	49,777,138	1362(\$1, N); 1363(\$5,N); 1364(\$5,N) - 09/19/11	3,083,973	7	8	4,819,453	97,999	1,200,444	1,283,472	450	600	3,206,022	75	86	692,909	1,092,294	82,198	1,561,655	25	30	384,383	67,281,938	2.67
10/1/2011	51,040,274	1365(\$2,N) - 09/26/11	3,196,730	9	10	4,846,896	97,026	1,215,715	1,146,613	800	200	4,033,330	96	113	830,660	1,096,271	83,993	1,693,809	37	47	412,058	69,693,374	2.76
10/8/2011	53,715,157	1366(\$1,N) - 10/03/11	3,231,892	11	12	5,064,771	102,919	1,252,733	1,004,251	225	300	2,176,684	12	14	527,777	1,188,636	92,825	2,103,034	58	71	480,159	70,940,837	2.81
10/15/2011	51,942,121	1367 (\$7, N) - 10/10/11	3,230,925	13	14	4,776,985	99,008	1,214,385	1,337,436	450	625	2,260,036	22	30	542,787	1,132,415	84,772	2,613,215	86	105	563,017	69,797,101	2.77
10/22/2011	52,837,769	1369 (\$1, N); 1370 (\$5, N) - 10/17/11	3,250,317	15	16	4,784,201	98,306	1,202,768	1,887,302	825	1,050	2,386,255	39	48	561,705	1,130,353	83,722	3,477,867	124	148	695,724	72,396,288	2.87
10/29/2011	52,206,644	1371 (\$2, N) - 10/24/11	3,302,201	17	18	4,685,786	95,887	1,186,987	2,055,399	1,300	1,550	2,592,752	57	67	596,631	1,107,441	82,921	4,895,300	173	203	903,261	73,711,209	2.92
11/5/2011	56,265,310	1373 (\$10, N) - 10/31/11	3,570,825	19	20	5,165,835	105,793	1,240,514	910,036	200	200	2,497,308	78	12	583,481	1,222,706	92,619	4,617,172	245	20	863,799	77,135,396	3.06
11/12/2011	55,682,645	1375 (\$3, N); 1374 (\$1, N) - 11/07/11	3,673,137	21	22	5,298,645	109,575	1,268,630	961,349	225	200	2,362,698	15	22	552,133	1,235,272	92,025	1,861,697	25	35	447,243	73,545,049	2.92
11/19/2011	54,978,079	1376(\$2, N); 1377 (\$5, N) - 11/14/11	3,575,231	23	24	5,216,095	106,956	1,246,366	1,059,355	225	325	2,300,050	30	40	550,825	1,224,365	89,978	2,033,222	46	60	477,542	72,858,064	2.89
11/26/2011	53,942,448	1372 (\$5, N) - 11/21/11	3,499,908	25	26	4,943,420	100,352	1,179,174	998,175	500	200	2,377,399	47	55	555,760	1,215,090	90,416	1,527,546	20	25	389,905	70,819,593	2.81
12/3/2011	57,153,469	0	3,744,456	27	28	5,267,602	108,544	1,264,649	938,225	225	200	2,830,996	64	75	636,924	1,278,857	95,379	1,708,763	31	40	424,242	75,452,105	2.99
12/10/2011	55,318,284	1378 (\$1, N); 1322 (\$5, N) - 12/5/11; 1389 (\$1, N) - 12/6/11	3,666,072	29	30	5,168,509	106,265	1,243,957	1,030,979	225	325	3,462,326	87	100	736,281	1,235,834	89,131	1,850,570	52	67	443,403	74,351,610	2.95
12/17/2011	58,612,629	1383 (\$3,N) - 12/12/11	2,963,151	4	5	5,096,413	103,606	1,257,263	1,339,991	475	650	4,412,520	116	135	882,759	1,240,640	89,229	2,163,468	78	91	496,239	78,657,908	3.12
12/24/2011	60,628,256	1379 (\$1, N); 1317 (\$2, N); 1380 (\$5, N) - 12/19/11	3,265,301	6	7	5,257,800	105,568	1,269,335	943,509	200	225	5,729,832	152	173	1,095,360	1,263,815	88,757	2,933,837	104	125	619,872	83,201,242	3.30
12/31/2011	63,065,007	0	3,368,593	8	9	5,211,663	107,395	1,275,257	1,200,536	325	450	4,358,985	206	12	878,865	1,244,035	88,079	1,788,226	20	25	426,888	83,013,528	3.29
1/7/2012	60,479,896	1381 (\$5,N); 1277 (\$50,N) - 1/3/12; 1429 (\$5,N); 1401 (\$10, N) - 1/4/12	3,193,532	10	11	5,246,112	108,060	1,281,653	1,135,472	625	200	2,298,815	15	25	550,191	1,240,736	90,116	1,763,484	30	44	423,718	77,811,784	3.09
1/14/2012	57,689,526	1382 (\$2,N); 1232 (\$10, N) - 1/9/12	3,259,338	12	13	5,061,130	103,687	1,270,289	1,059,875	225	350	2,542,675	33	42	587,013	1,229,792	87,637	1,921,683	54	66	445,614	75,258,258	2.98
1/21/2012	58,704,854	1384 (\$1, N); 1385 (\$5,N) - 1/16/12	3,310,397	14	15	5,033,947	104,874	1,252,621	1,422,729	500	650	2,696,266	50	60	594,142	1,204,955	88,136	3,611,989	80	100	566,485	78,591,394	3.12
1/28/2012	57,611,325	0	3,295,592	16	17	4,996,799	103,779	1,241,568	1,940,577	875	1,100	2,426,609	71	12	544,967	1,197,885	85,833	4,311,550	120	146	496,540	78,253,022	3.10
2/4/2012	65,553,366	1434 (\$2, N); 1142 (\$20, N) - 01/30/12	3,526,781	18	19	5,493,300	112,992	1,316,899	2,230,312	1,350	1,650	2,212,907	15	23	525,610	1,315,424	96,711	6,186,774	170	200	672,146	89,243,221	3.54
2/11/2012	75,070,485	1361 (\$5, N); 1362 (\$1, N); 1388 (\$3, N) - 02/06/12	3,569,296	20	21	5,678,360	119,455	1,321,397	983,011	200	225	2,388,865	32	41	562,554	1,332,218	97,927	10,633,290	250	325	1,675,211	103,432,068	4.10
2/18/2012	66,679,947	1433 (\$10, N) - 02/13/12	3,230,364	22	4	5,467,216	114,573	1,316,645	955,165	200	200	2,625,022	51	61	605,640	1,294,454	95,383	3,310,544	40	50	573,610	86,268,562	3.42
2/25/2012	64,868,899	1253 (\$2,N); 1431 (\$5,N) - 02/20/2012	3,046,687	5	6	5,452,765	115,785	1,312,655	980,607	225	200	2,972,219	72	83	659,936	1,283,389	92,775	3,590,429	60	70	458,143	84,834,287	3.36
3/3/2012	67,135,065	1393 (\$1,N); 1437 (\$5, N) - 02/27/2012	3,166,827	7	8	5,754,954	121,213	1,355,233	1,129,262	225	350	3,675,723	94	108	782,787	1,379,907	101,888	3,066,811	40	50	412,577	88,082,246	3.49
3/10/2012	68,299,006	1395 (\$2, N); 1396 (\$5, N); - 03/05/2012; 1349 (\$10, N) - 03/08/2012	3,239,012	9	10	5,637,055	121,996	1,342,258	1,564,625	525	700	4,549,049	127	148	919,907	1,359,810	98,371	2,927,846	60	40	392,711	90,451,645	3.59

Texas Lottery Commission - Weekly Sales Summary for FY 2012 (Unaudited)

Week Ended	Instant Games	New Games & Dates	Lotto Texas	Jackpot W S		Pick 3	Pick 3 Sum It Up	Cash Five	Texas Two Step	Jackpot M TH		Mega Millions	Jackpot T F		Megaplier	Daily 4	Daily 4 Sum It Up	Powerball	Jackpot W S		Power Play	Total	Per Cap.
3/17/2012	65,013,692	0	3,238,467	11	12	5,355,241	111,158	1,304,908	2,011,205	925	1,150	5,753,985	171	200	1,113,018	1,281,976	92,281	2,718,408	50	60	371,071	88,365,410	3.50
3/24/2012	64,035,255	1397 (\$1,N); 1398 (\$5,N); - 03/19/2012; 1428 (\$2,N) - 03/22/2012	3,279,433	13	14	5,362,981	113,111	1,289,990	2,213,714	1,450	1,750	9,201,212	241	290	1,604,019	1,265,996	91,545	2,634,408	70	40	360,200	91,451,864	3.63
3/31/2012	65,135,991	1417 (\$2, N); 1432 (\$5, N) - 03/26/2012	3,888,301	15	16	5,439,674	122,076	1,326,368	1,004,583	200	225	60,266,900	363	640	7,844,087	1,312,333	97,380	2,949,562	50	60	377,724	149,764,978	5.94
4/7/2012	66,860,957	1390 (\$1,N); 1438 (\$3,N); 1400 (\$5,N) - 04/02/2012	3,544,179	17	18	5,596,322	122,273	1,346,414	1,378,904	350	525	2,654,528	12	20	594,458	1,422,543	100,294	2,776,683	70	80	362,804	86,760,357	3.44
weekly change	2.6%		-8.9%			2.9%	0.2%	1.5%	37.3%			-95.6%			-92.4%	8.4%	3.0%	-5.9%			-3.9%	-42.1%	
	<b>SALES</b>		<b>SALES</b>			<b>SALES</b>	<b>SALES</b>	<b>SALES</b>	<b>SALES</b>			<b>SALES</b>			<b>SALES</b>	<b>SALES</b>	<b>SALES</b>	<b>SALES</b>			<b>SALES</b>	<b>SALES</b>	<b>% of Sales</b>
Startup to date	43,731,235,008		11,013,739,027			4,291,401,231	26,697,231	2,360,731,028	618,335,478			1,645,060,569			369,311,337	239,988,718	25,833,534	250,799,070			53,059,451	64,834,325,651	100.0%
Calendar Year to date	903,138,264		46,788,206			75,575,851	1,595,029	18,278,898	20,010,041			106,264,775			17,488,329	18,121,415	1,316,273	52,403,461			7,588,554	1,268,569,094	100.0%
Fiscal Year to date 2012	1,855,876,806		105,732,968			164,040,910	3,393,898	39,822,367	40,501,011			159,628,844			29,176,166	38,986,029	2,864,095	94,407,186			16,796,106	2,551,226,384	100.0%