



WEEKLY SALES SUMMARY

Unaudited

Week Ending: 04/11/2009

Texas Lottery Commission
Fiscal Year to Date Sales Comparison
Unaudited

Through the week ending 04/11/2009 (32 weeks)

Sales by Game	FY 2007 *	FY 2008 **	FY 2009	\$ Change		% Change	
				FY 2009 to FY 2007	FY 2009 to FY 2008	FY 2009 to FY 2007	FY 2009 to FY 2008
Instant	\$ 1,763,453,843	\$ 1,749,520,125	\$ 1,710,516,790	\$ -52,937,053	\$ -39,003,335	-3.0%	-2.2%
Lotto Texas	155,384,561	129,278,752	117,892,464	-37,492,097	-11,386,288	-24.1%	-8.8%
Pick 3	194,123,830	178,078,517	177,388,094	-16,735,736	-690,423	-8.6%	-0.4%
Pick 3 Sum It Up	-	3,899,508	3,732,341	3,732,341	-167,167	-	-4.3%
Cash 5	54,492,945	47,517,377	44,114,093	-10,378,852	-3,403,284	-19.0%	-7.2%
Texas Two Step	32,428,156	27,461,395	31,834,784	-593,372	4,373,389	-1.8%	15.9%
Mega Millions	116,518,534	105,955,789	113,532,785	-2,985,750	7,576,996	-2.6%	7.2%
Megaplier	26,735,743	25,100,065	26,292,620	-443,123	1,192,555	-1.7%	4.8%
Daily 4	-	26,202,143	27,624,925	27,624,925	1,422,782	-	5.4%
Daily 4 Sum It Up	-	5,973,076	3,393,131	3,393,131	-2,579,946	-	-43.2%
Total	\$ 2,343,137,612	\$ 2,298,986,746	\$ 2,256,322,025	\$ -86,815,587	\$ -42,664,721	-3.7%	-1.9%

* 3 extra days in 2007 ** 2 extra days in 2008

Texas Lottery Commission
Fiscal Year Over Year Change in Sales
Unaudited
FY 2009 Compared to FY 2008

Week	FY 2009 Week Ending	INSTANT TICKETS				ON-LINE GAMES				TOTAL SALES			
		FY 2009	FY 2008	Difference	% change - Cumulative Sales	FY 2009	FY 2008	Difference	% change - Cumulative Sales	FY 2009	FY 2008	Difference	% change - Cumulative Sales
1	9/6/2008**	\$44,890,104	\$62,376,229	(\$17,486,125)	-28.0%	\$14,722,011	\$19,372,224	(\$4,650,213)	-24.0%	\$59,612,115	\$81,748,453	(\$22,136,338)	-27.1%
2	9/13/2008	\$46,309,551	\$52,458,866	(\$6,149,315)	-20.6%	\$13,704,860	\$16,926,163	(\$3,221,303)	-21.7%	\$60,014,411	\$69,385,029	(\$9,370,618)	-20.8%
3	9/20/2008	\$42,923,171	\$49,998,934	(\$7,075,763)	-18.6%	\$12,291,263	\$15,792,283	(\$3,501,020)	-21.8%	\$55,214,434	\$65,791,217	(\$10,576,783)	-19.4%
4	9/27/2008	\$47,042,801	\$49,894,175	(\$2,851,374)	-15.6%	\$14,222,339	\$14,800,514	(\$578,175)	-17.9%	\$61,265,140	\$64,694,689	(\$3,429,549)	-16.2%
5	10/4/2008	\$50,747,162	\$53,486,863	(\$2,739,701)	-13.5%	\$15,784,472	\$16,618,430	(\$833,958)	-15.3%	\$66,531,634	\$70,105,293	(\$3,573,659)	-14.0%
6	10/11/2008	\$49,763,789	\$50,918,020	(\$1,154,231)	-11.7%	\$15,622,498	\$15,601,410	\$21,088	-12.9%	\$65,386,287	\$66,519,430	(\$1,133,143)	-12.0%
7	10/18/2008	\$49,299,053	\$50,532,253	(\$1,233,200)	-10.5%	\$15,167,940	\$15,682,666	(\$514,726)	-11.6%	\$64,466,993	\$66,214,919	(\$1,747,926)	-10.7%
8	10/25/2008	\$49,977,581	\$50,347,450	(\$369,869)	-9.3%	\$14,525,843	\$15,586,516	(\$1,060,673)	-11.0%	\$64,503,424	\$65,933,966	(\$1,430,542)	-9.7%
9	11/1/2008	\$50,346,542	\$53,953,733	(\$3,607,191)	-9.0%	\$14,838,845	\$16,775,983	(\$1,937,139)	-11.1%	\$65,185,387	\$70,729,716	(\$5,544,330)	-9.5%
10	11/8/2008	\$54,860,087	\$53,635,090	\$1,224,997	-7.9%	\$16,057,069	\$15,912,791	\$144,278	-9.9%	\$70,917,156	\$69,547,881	\$1,369,275	-8.3%
11	11/15/2008	\$53,484,812	\$51,254,401	\$2,230,411	-6.8%	\$15,829,819	\$15,797,076	\$32,744	-9.0%	\$69,314,631	\$67,051,477	\$2,263,155	-7.3%
12	11/22/2008	\$52,806,511	\$50,897,817	\$1,908,694	-5.9%	\$16,460,748	\$15,801,720	\$659,028	-7.9%	\$69,267,259	\$66,699,537	\$2,567,722	-6.4%
13	11/29/2008	\$52,199,741	\$53,913,115	(\$1,713,374)	-5.7%	\$17,397,576	\$17,055,505	\$342,072	-7.1%	\$69,597,317	\$70,968,620	(\$1,371,303)	-6.0%
14	12/6/2008	\$56,731,851	\$55,702,697	\$1,029,154	-5.1%	\$20,363,789	\$17,900,717	\$2,463,073	-5.5%	\$77,095,640	\$73,603,414	\$3,492,227	-5.2%
15	12/13/2008	\$54,109,617	\$53,703,516	\$406,101	-4.7%	\$22,952,228	\$17,820,841	\$5,131,387	-3.0%	\$77,061,845	\$71,524,357	\$5,537,488	-4.3%
16	12/20/2008	\$55,777,328	\$57,592,769	(\$1,815,441)	-4.6%	\$15,833,517	\$17,436,233	(\$1,602,716)	-3.4%	\$71,610,845	\$75,029,002	(\$3,418,157)	-4.3%
17	12/27/2008	\$57,597,885	\$57,696,003	(\$98,118)	-4.3%	\$15,851,771	\$14,743,680	\$1,108,091	-2.9%	\$73,449,656	\$72,439,683	\$1,009,973	-4.0%
18	1/3/2009	\$57,582,115	\$57,935,952	(\$353,837)	-4.1%	\$16,900,028	\$15,704,450	\$1,195,578	-2.3%	\$74,482,143	\$73,640,402	\$841,741	-3.7%
19	1/10/2009	\$54,250,945	\$55,360,542	(\$1,109,597)	-4.0%	\$16,203,220	\$15,691,540	\$511,680	-2.0%	\$70,454,165	\$71,052,082	(\$597,917)	-3.5%
20	1/17/2009	\$51,625,339	\$54,920,166	(\$3,294,827)	-4.1%	\$15,701,605	\$16,259,669	(\$558,064)	-2.1%	\$67,326,944	\$71,179,835	(\$3,852,891)	-3.6%
21	1/24/2009	\$52,789,573	\$54,439,890	(\$1,650,317)	-4.1%	\$15,897,473	\$16,691,724	(\$794,251)	-2.2%	\$68,687,046	\$71,131,614	(\$2,444,568)	-3.6%
22	1/31/2009	\$55,453,471	\$57,464,382	(\$2,010,911)	-4.0%	\$16,908,272	\$17,968,227	(\$1,059,955)	-2.4%	\$72,361,743	\$75,432,609	(\$3,070,866)	-3.7%
23	2/7/2009	\$62,247,711	\$60,715,019	\$1,532,692	-3.7%	\$18,354,314	\$20,097,338	(\$1,743,025)	-2.7%	\$80,602,025	\$80,812,357	(\$210,333)	-3.5%
24	2/14/2009	\$60,509,056	\$57,093,143	\$3,415,913	-3.3%	\$19,218,078	\$22,179,908	(\$2,961,831)	-3.3%	\$79,727,134	\$79,273,051	\$454,083	-3.3%
25	2/21/2009	\$59,194,623	\$57,627,047	\$1,567,576	-3.0%	\$21,098,199	\$27,230,539	(\$6,132,340)	-4.5%	\$80,292,822	\$84,857,586	(\$4,564,764)	-3.4%
26	2/28/2009	\$58,857,216	\$55,591,667	\$3,265,549	-2.7%	\$24,116,924	\$17,016,118	\$7,100,806	-2.8%	\$82,974,140	\$72,607,785	\$10,366,355	-2.7%
27	3/7/2009	\$59,552,257	\$56,837,481	\$2,714,776	-2.4%	\$23,995,136	\$16,690,193	\$7,304,943	-1.1%	\$83,547,393	\$73,527,674	\$10,019,719	-2.1%
28	3/14/2009	\$53,754,084	\$54,587,112	(\$833,028)	-2.4%	\$18,769,831	\$16,448,165	\$2,321,667	-0.6%	\$72,523,915	\$71,035,277	\$1,488,639	-1.9%
29	3/21/2009	\$52,581,107	\$53,098,937	(\$517,830)	-2.3%	\$15,903,038	\$16,639,184	(\$736,146)	-0.7%	\$68,484,145	\$69,738,121	(\$1,253,976)	-1.9%
30	3/28/2009	\$52,560,961	\$53,933,689	(\$1,372,728)	-2.3%	\$16,094,933	\$17,698,625	(\$1,603,692)	-1.0%	\$68,655,894	\$71,632,314	(\$2,976,420)	-2.0%
31	4/4/2009	\$56,249,759	\$57,598,982	(\$1,349,223)	-2.3%	\$17,357,002	\$17,665,411	(\$308,409)	-1.0%	\$73,606,761	\$75,264,393	(\$1,657,632)	-2.0%
32	4/11/2009	\$54,440,987	\$53,954,185	\$486,802	-2.2%	\$17,660,600	\$15,860,784	\$1,799,816	-0.7%	\$72,101,587	\$69,814,969	\$2,286,618	-1.9%
33	4/18/2009		\$53,946,736				\$16,452,676				\$70,399,412		
34	4/25/2009		\$51,533,006				\$16,873,949				\$68,406,955		
35	5/2/2009		\$53,250,568				\$18,202,103				\$71,452,671		
36	5/9/2009		\$54,060,849				\$18,422,562				\$72,483,411		
37	5/16/2009		\$54,010,641				\$20,728,360				\$74,739,001		
38	5/23/2009		\$50,377,032				\$15,461,384				\$65,838,416		
39	5/30/2009		\$49,545,080				\$15,175,370				\$64,720,450		
40	6/6/2009		\$53,702,986				\$15,982,166				\$69,685,152		

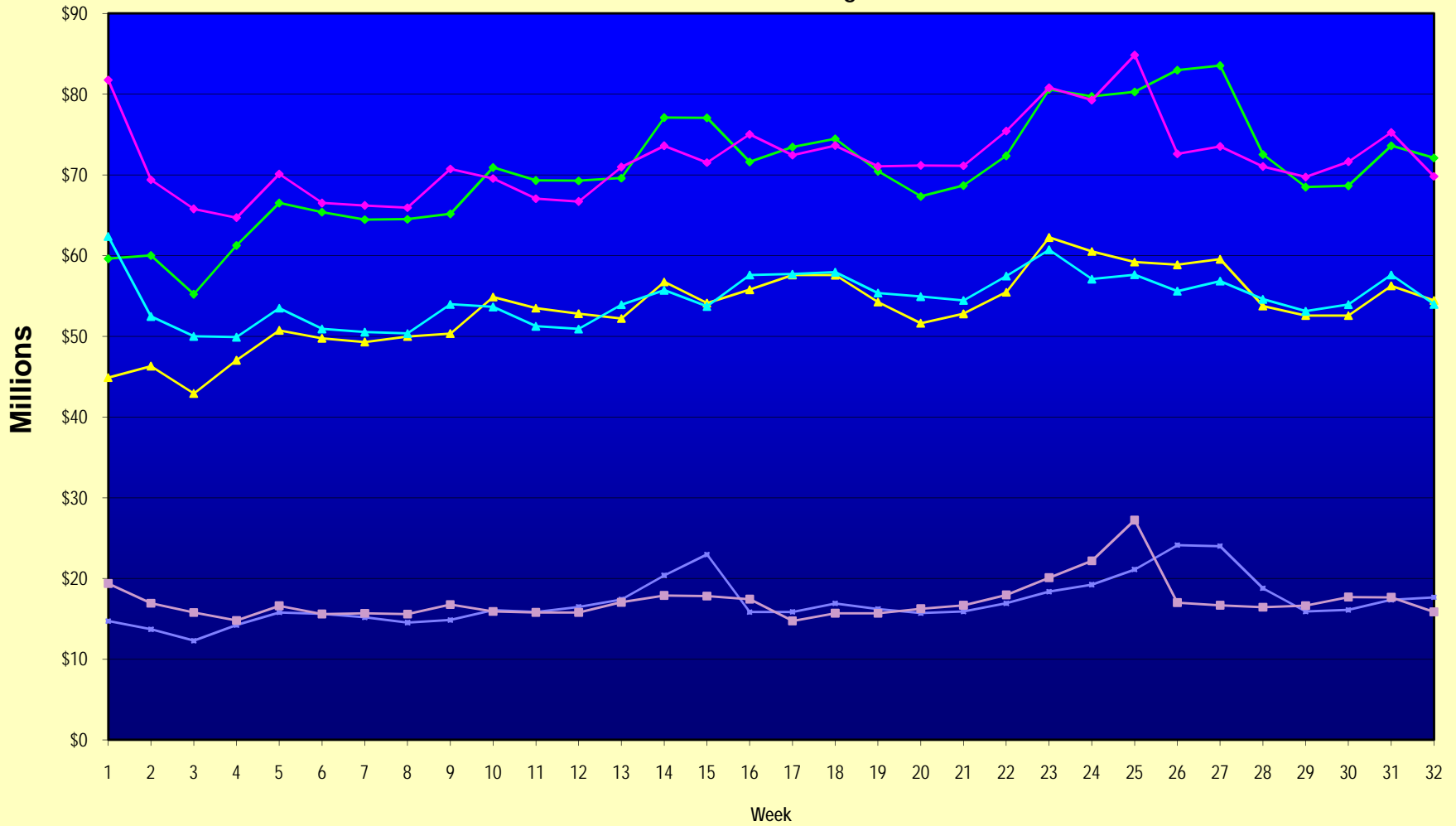
Note: Week 1 is not a full week of sales as this report is prepared on a Fiscal Year basis.

Texas Lottery Commission
Fiscal Year Over Year Change in Sales
Unaudited
FY 2009 Compared to FY 2008

Week	FY 2009 Week Ending	INSTANT TICKETS				ON-LINE GAMES				TOTAL SALES			
		FY 2009	FY 2008	Difference	% change - Cumulative Sales	FY 2009	FY 2008	Difference	% change - Cumulative Sales	FY 2009	FY 2008	Difference	% change - Cumulative Sales
41	6/13/2009		\$51,171,483				\$16,589,087				\$67,760,570		
42	6/20/2009		\$50,650,362				\$15,728,484				\$66,378,846		
43	6/27/2009		\$49,258,266				\$15,250,905				\$64,509,171		
44	7/4/2009		\$53,393,355				\$16,270,619				\$69,663,974		
45	7/11/2009		\$53,127,756				\$16,914,922				\$70,042,678		
46	7/18/2009		\$51,593,146				\$17,752,738				\$69,345,884		
47	7/25/2009		\$49,902,181				\$16,706,145				\$66,608,326		
48	8/1/2009		\$49,605,420				\$16,254,383				\$65,859,803		
49	8/8/2009		\$50,961,907				\$16,770,496				\$67,732,403		
50	8/15/2009		\$49,452,511				\$16,749,487				\$66,201,998		
51	8/22/2009		\$49,249,518				\$17,286,302				\$66,535,820		
52	8/29/2009		\$49,468,928				\$18,109,997				\$67,578,925		
53	9/5/2009		\$6,054,239				\$493,109				\$6,547,348		
Total thru Current Week		\$1,710,516,790	\$1,749,520,125	(\$39,003,335)	-2.2%	\$545,805,235	\$549,466,621	(\$3,661,386)	-0.7%	\$2,256,322,025	\$2,298,986,746	(\$42,664,721)	-1.9%
Fiscal Year Total		\$1,710,516,790	\$2,783,836,095			\$545,805,235	\$887,641,858			\$2,256,322,025	\$3,671,477,953		

** FY 2009 includes 6 days; FY 2008 includes 8 days
FY 2009 average daily sales are \$9,242,258. Two days at average daily sales are \$18,484,516.

Texas Lottery Commission Fiscal Year Over Year Change in Sales



◆ Total Sales 2009
 ◆ Total Sales 2008
 ▲ Instant Tickets 2009
 ▲ Instant Tickets 2008
 ■ On-Line Games 2009
 ■ On-Line Games 2008

Note: Week 1 is not a full week of sales as this report is prepared on a Fiscal Year basis.

Texas Lottery Commission
Instant Tickets by Price Point
Sales, Prize Expense, Sales Contribution and Payout Percentage With Year Over Year Changes
Unaudited

Fiscal Year	Price Point	# of Active Games	FY Sales	% of Instant Ticket Sales	Year over Year Change in Sales	FY Prize Expense	Year over Year Change in Prize Expense	FY Sales Contribution	Year over Year Change in Contribution	Average Prize Payout %	Year over Year Change in Payout %
2008	\$1.00	42	146,403,653	8.4%		88,017,067		58,386,586		60.1%	0.0%
thru	\$2.00	48	285,985,192	16.3%		186,116,505		99,868,687		65.1%	0.4%
4/12/2008	\$3.00	15	150,603,657	8.6%		98,976,124		51,627,533		65.7%	-0.2%
	\$5.00	43	488,590,490	27.9%		330,865,865		157,724,625		67.7%	-0.4%
	\$7.00	11	104,726,622	6.0%		71,223,187		33,503,435		68.0%	0.1%
	\$10.00	18	264,567,626	15.1%		183,903,779		80,663,847		69.5%	-1.4%
	\$20.00	8	117,546,800	6.7%		84,512,136		33,034,664		71.9%	-0.1%
	\$25.00	2	47,734,875	2.7%		34,658,597		13,076,278		72.6%	0.3%
	\$30.00	3	40,921,260	2.3%		29,620,474		11,300,786		72.4%	0.2%
	\$50.00	2	102,439,950	5.9%		73,907,905		28,532,045		72.1%	0.0%
Total		192	\$1,749,520,125			\$1,181,801,639		\$567,718,486		67.6%	0.1%
2009	\$1.00	40	149,897,963	8.8%		90,263,755		59,634,208		60.2%	0.2%
thru	\$2.00	39	295,386,456	17.3%		192,419,234		102,967,222		65.1%	-0.2%
4/11/2009	\$3.00	16	179,134,269	10.5%		117,643,820		61,490,449		65.7%	-0.1%
	\$5.00	40	524,547,539	30.7%		356,738,823		167,808,716		68.0%	0.1%
	\$7.00	7	85,147,468	5.0%		57,905,642		27,241,826		68.0%	0.0%
	\$10.00	18	243,111,780	14.2%		170,105,731		73,006,049		70.0%	0.0%
	\$20.00	8	152,618,960	8.9%		109,508,867		43,110,093		71.8%	0.0%
	\$25.00	1	2,372,325	0.1%		1,725,527		646,798		72.7%	0.2%
	\$30.00	3	10,024,980	0.6%		7,264,471		2,760,509		72.5%	0.1%
	\$50.00	4	68,275,050	4.0%		49,637,509		18,637,541		72.7%	0.7%
Total		176	\$1,710,516,790			\$1,153,213,379		\$557,303,411		67.4%	-0.4%
Variance	\$1.00	-2	3,494,310		2.4%	2,246,688	2.6%	1,247,622	2.1%	0.10%	
2009 to	\$2.00	-9	9,401,264		3.3%	6,302,728	3.4%	3,098,536	3.1%	0.06%	
2008	\$3.00	1	28,530,612		18.9%	18,667,696	18.9%	9,862,916	19.1%	-0.05%	
	\$5.00	-3	35,957,049		7.4%	25,872,958	7.8%	10,084,091	6.4%	0.29%	
	\$7.00	-4	-19,579,154		-18.7%	-13,317,545	-18.7%	-6,261,609	-18.7%	0.00%	
	\$10.00	0	-21,455,846		-8.1%	-13,798,048	-7.5%	-7,657,798	-9.5%	0.46%	
	\$20.00	0	35,072,160		29.8%	24,996,731	29.6%	10,075,429	30.5%	-0.14%	
	\$25.00	-1	-45,362,550		-95.0%	-32,933,070	-95.0%	-12,429,480	-95.1%	0.13%	
	\$30.00	0	-30,896,280		-75.5%	-22,356,002	-75.5%	-8,540,278	-75.6%	0.08%	
	\$50.00	2	-34,164,900		-33.4%	-24,270,396	-32.8%	-9,894,504	-34.7%	0.55%	
Total		-16	-\$39,003,335		-2.2%	-\$28,588,261	-2.4%	-\$10,415,074	-1.8%	-0.13%	

Texas Lottery Commission
Instant Tickets by Price Point
 Sales, Prize Expense, Sales Contribution and Payout Percentage With Year Over Year Changes
 Unaudited

Notes - Instant Ticket Variances

		FY 2009		FY 2008		Difference
Sales	\$1 - \$7	\$1,234,113,695		\$1,176,309,614		\$57,804,081
Prize Exp.	\$1 - \$7	\$814,971,274		\$775,198,749		\$39,772,525
Sales Cont.	\$1 - \$7	\$419,142,421		\$401,110,865		\$18,031,556
Prize Exp. %	\$1 - \$7	66.0%		65.9%		0.1%
		FY 2009		FY 2008		Difference
Sales	\$10 - \$50	\$476,403,095		\$573,210,511		-\$96,807,416
Prize Exp.	\$10 - \$50	\$338,242,105		\$406,602,891		-\$68,360,786
Sales Cont.	\$10 - \$50	\$138,160,990		\$166,607,620		-\$28,446,630
Prize Exp. %	\$10 - \$50	71.0%		70.9%		0.1%
		FY 2009		FY 2008		Difference
Sales	Instant	\$1,710,516,790		\$1,749,520,125		-\$39,003,335
Prize Exp.	Instant	\$1,153,213,379		\$1,181,801,639		-\$28,588,261
Sales Cont.	Instant	\$557,303,411		\$567,718,486		-\$10,415,074
Prize Exp. %	Instant	67.4%		67.6%		-0.1%

		FY 2009		FY 2008		Difference
Sales	\$1 - \$10	\$1,477,225,475		\$1,440,877,240		\$36,348,235
Prize Exp.	\$1 - \$10	\$985,077,005		\$959,102,527		\$25,974,477
Sales Cont.	\$1 - \$10	\$492,148,470		\$481,774,713		\$10,373,758
Prize Exp. %	\$1 - \$10	66.7%		66.6%		0.1%
		FY 2009		FY 2008		Difference
Sales	\$20 - \$50	\$233,291,315		\$308,642,885		-\$75,351,570
Prize Exp.	\$20 - \$50	\$168,136,374		\$222,699,112		-\$54,562,738
Sales Cont.	\$20 - \$50	\$65,154,941		\$85,943,773		-\$20,788,832
Prize Exp. %	\$20 - \$50	72.1%		72.2%		-0.1%
		FY 2009		FY 2008		Difference
Sales	Instant	\$1,710,516,790		\$1,749,520,125		-\$39,003,335
Prize Exp.	Instant	\$1,153,213,379		\$1,181,801,639		-\$28,588,261
Sales Cont.	Instant	\$557,303,411		\$567,718,486		-\$10,415,074
Prize Exp. %	Instant	67.4%		67.6%		-0.1%

Texas Lottery Commission
 Weekly Sales Summary
 & Comparison to Previous Week
 Unaudited

	Week Ending 04/11/2009		Week Ending 04/04/2009			
	<u>THIS WEEK</u>	% of Sales	<u>LAST WEEK</u>	% of Sales	<u>\$ change</u>	<u>% change</u>
Total Sales	<u>\$72,101,587</u>		<u>\$73,606,761</u>		<u>-\$1,505,175</u>	-2.04%
Instant Tickets	<u>\$54,440,987</u>	75.5%	<u>\$56,249,759</u>	76.4%	<u>-\$1,808,772</u>	-3.22%
Lotto Texas	\$3,594,176	5.0%	\$3,746,083	5.1%	-\$151,907	-4.06%
Pick 3	\$5,893,551	8.2%	\$5,893,044	8.0%	\$508	0.01%
Pick 3 Sum It Up	\$120,492	0.2%	\$122,332	0.2%	-\$1,841	-1.50%
Cash 5	\$1,394,879	1.9%	\$1,429,598	1.9%	-\$34,719	-2.43%
Texas Two Step	\$933,807	1.3%	\$940,614	1.3%	-\$6,807	-0.72%
Mega Millions	\$3,772,700	5.2%	\$3,321,274	4.5%	\$451,426	13.59%
Megaplier	\$857,890	1.2%	\$794,282	1.1%	\$63,608	8.01%
Daily 4	\$987,128	1.4%	\$998,042	1.4%	-\$10,915	-1.09%
Daily 4 Sum It Up	\$105,978	0.1%	\$111,734	0.2%	-\$5,756	-5.15%
Total Online Sales	<u>\$17,660,600</u>		<u>\$17,357,002</u>		<u>\$303,598</u>	1.75%

* Totals may not sum due to rounding.

Texas Lottery Commission
Weekly Sales Summary
Unaudited

INSTANT TICKETS
TOP TEN SELLING GAMES

For the Week Ending : 04/11/2009

Rank	Price Point	Game	Sales (Millions)
1	\$ 5	EXTREME 8'S	\$ 3.557
2	\$ 10	PRECIOUS JEWELS	\$ 3.478
3	\$ 50	\$140,000,000 EXTREME PAYOUT	\$ 3.025
4	\$ 3	BONUS CASHWORD	\$ 2.733
5	\$ 10	STACKS OF CASH	\$ 2.275
6	\$ 7	DAZZLIN' DIAMOND 7'S	\$ 2.194
7	\$ 5	BUST THE BANK	\$ 1.946
8	\$ 5	3 OF A KIND	\$ 1.808
9	\$ 20	SUPER SET FOR LIFE	\$ 1.794
10	\$ 5	BONUS BREAK THE BANK	\$ 1.716

Texas Lottery Commission
Prize Payout Tracking Report
Unaudited

Through Week Ending 04/11/2009

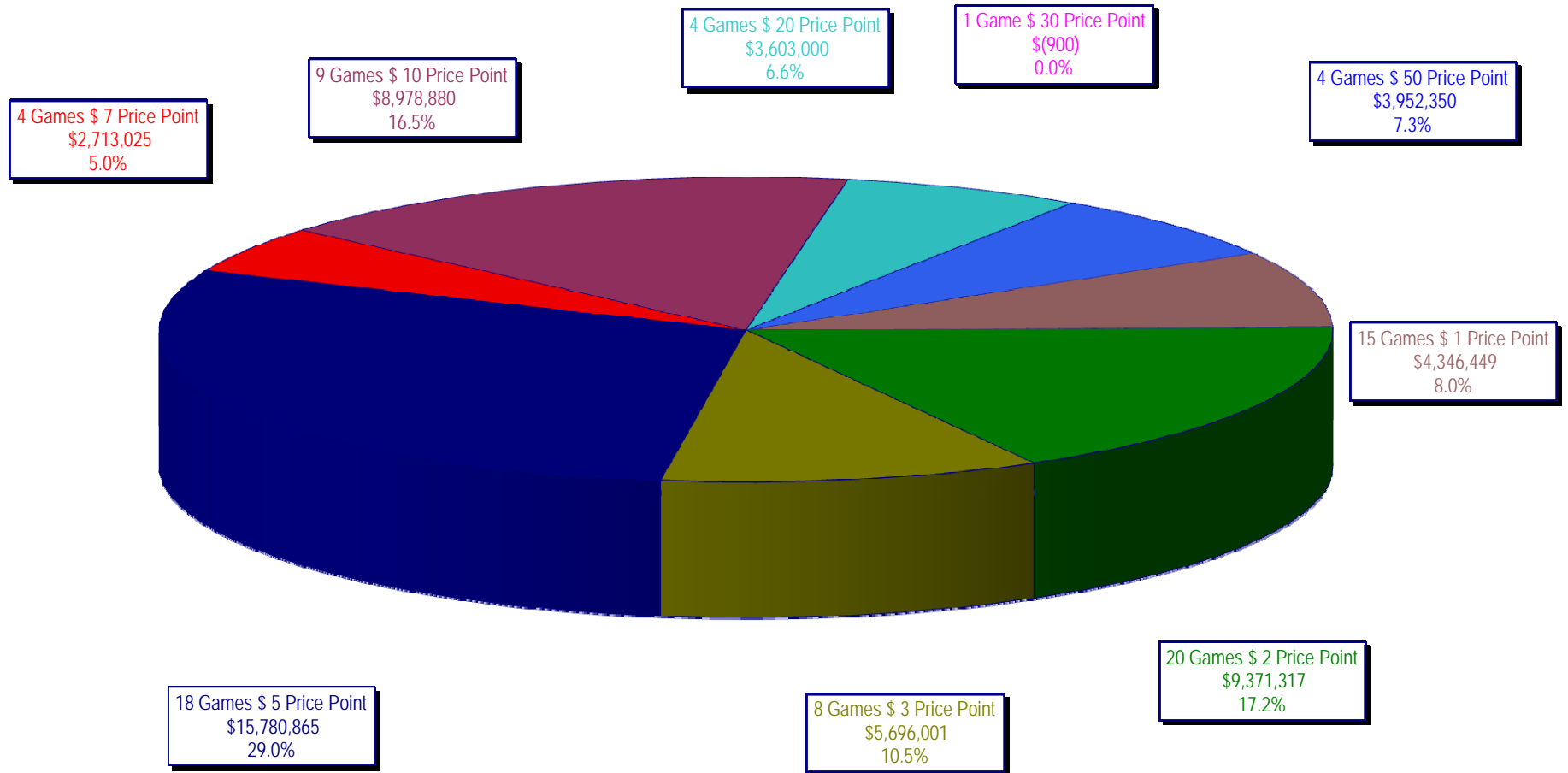
On-Line Sales

		FY Sales Through Week Ending 4/11/2009		FY Prize Expense Through Week Ending 4/11/2009	Actual* Prize Payout	Base Payout (Prize Pool)
Lotto	\$	117,892,464	\$	59,057,214	50.09%	50.00%
Pick 3		177,388,094		88,199,450	49.72%	50.00%
Pick 3 Sum It Up		3,732,341		1,698,398	45.50%	50.00%
Cash 5		44,114,093		22,160,557	50.23%	50.00%
Texas Two-Step		31,834,784		17,163,913	53.92%	50.00%
Mega Millions		113,532,785		55,765,439	49.12%	50.00%**
Megaplier		26,292,620		10,925,310	41.55%	N/A
Daily 4		27,624,925		13,615,000	49.29%	50.00%
Daily 4-Sum It Up		3,393,131		1,428,487	42.10%	50.00%
Totals	\$	545,805,235	\$	270,013,768	49.47%	

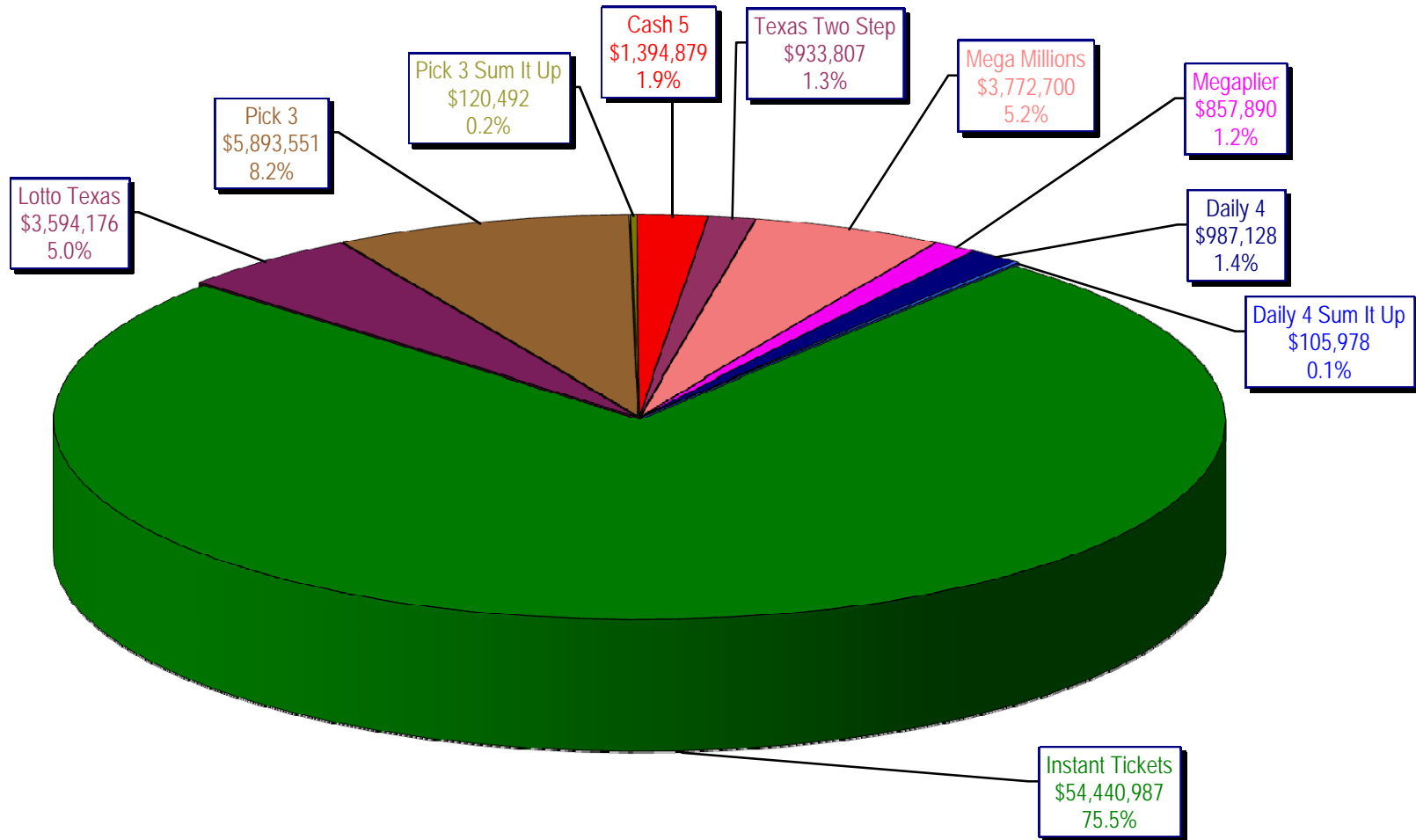
* Before Unclaimed Prizes

** Estimated; depends on # of guaranteed prizes won in Texas

Texas Lottery Commission
Instant Ticket Sales
For the Week Ending 04/11/2009
(Unaudited)



Texas Lottery Commission
All Game Sales
For the Week Ending 04/11/2009
(Unaudited)



Texas Lottery Commission - Weekly Sales Summary for FY 2009 (Unaudited)

Week Ended	Instant Games	New Games & Dates	Lotto Texas	Jackpot		Pick 3	Pick 3 Sum It Up	Cash 5	Texas Two Step	Jackpot		Mega Millions	Jackpot		Megaplier	Daily 4	Daily 4 Sum It Up	Total	Per Cap.
				W	S					M/T	TH/F		T	F					
9/6/2008	50,944,343.00	1108 (\$2,N), 1088 (\$3, N) - 9/01/08	3,378,718.00	5	6	5,436,414.00	122,123.00	1,396,622.00	890,346.00	350	450	2,445,490.00	12	16	649,090.00	786,482.50	109,834.00	66,159,462.50	2.77
9/13/2008	46,309,551.00	1109 (\$1,N), 1098 (\$5, N) - 9/08/08	3,020,089.00	7	8	4,705,585.50	105,899.00	1,279,412.00	856,199.00	600	200	2,327,214.00	24	12	617,672.00	696,633.00	96,156.50	60,014,411.00	2.51
9/20/2008	42,923,171.00	0	3,054,093.00	9	10	4,121,734.50	90,718.00	1,155,350.00	637,792.00	225	250	1,978,127.00	15	12	540,225.00	627,210.00	86,013.50	55,214,434.00	2.31
9/27/2008	47,042,801.00	1111 (\$2,N), 1099 (\$5, N) - 9/22/08	3,427,671.00	11	12	4,821,563.00	103,189.50	1,288,062.00	834,307.00	275	425	2,322,862.00	16	24	617,085.00	709,741.50	97,858.00	61,265,140.00	2.56
10/4/2008	50,747,162.00	1113 (\$1,N) 9/29/08	3,675,683.00	13	14	5,305,711.00	116,332.50	1,369,040.00	1,074,874.00	525	650	2,671,927.00	32	42	693,845.00	770,782.50	106,277.00	66,531,634.00	2.78
10/11/2008	49,763,789.00	0	3,732,365.00	15	16	5,287,094.00	114,665.50	1,370,334.00	1,305,250.00	800	975	2,306,070.00	12	16	622,120.00	778,204.00	106,395.00	65,386,286.50	2.74
10/18/2008	49,299,053.00	1117 (\$3,N), 1118 (\$20,N) - 10/13/08	3,780,438.00	17	18	5,149,258.00	109,530.00	1,355,601.00	741,849.00	200	200	2,500,644.00	23	32	652,198.00	776,366.00	102,056.00	64,466,993.00	2.70
10/25/2008	49,977,581.00	1119 (\$1,N), 1120 (\$5,N) - 10/20/08	3,210,762.00	4	5	5,099,671.00	107,104.50	1,339,079.00	789,649.00	225	275	2,456,965.00	42	12	641,206.00	778,434.00	102,972.50	64,503,424.00	2.70
11/1/2008	50,346,542.00	1121 (\$2,N), 1122 (\$10,N) - 10/27/08	3,325,641.00	6	7	5,234,124.00	109,983.00	1,339,046.00	946,035.00	375	475	2,347,596.00	16	23	626,235.00	805,572.00	104,612.50	65,185,386.50	2.73
11/8/2008	54,860,087.00	1123 (\$3,N), 1124 (\$7,N) - 11/03/08; 1103 (\$3,N) - 11/05/08; 1063 (\$3,N) - 11/07/08	3,290,417.00	4	5	5,686,701.00	118,495.00	1,397,985.00	1,158,101.00	625	750	2,729,302.50	31	42	692,662.00	871,230.00	112,175.50	70,917,156.00	2.97
11/15/2008	53,484,812.00	1125 (\$1, N), 1126 (\$5,N) - 11/10/08	3,336,934.00	6	7	5,459,984.00	112,884.00	1,366,024.00	766,955.00	200	225	3,102,251.00	51	62	749,736.00	830,957.00	104,094.00	69,314,631.00	2.90
11/22/2008	52,806,511.00	0	3,452,481.00	8	9	5,329,591.00	108,861.50	1,358,271.00	743,950.00	200	200	3,666,517.00	73	86	847,201.00	849,077.50	104,797.50	69,267,258.50	2.90
11/29/2008	52,199,741.00	1127 (\$2,N), 1128 (\$5,N) - 11/24/08	3,585,374.00	10	11	5,340,783.50	111,443.00	1,315,233.00	686,077.00	200	225	4,441,715.00	96	111	968,906.00	845,475.50	102,569.00	69,597,317.00	2.91
12/6/2008	56,731,851.00	0	3,794,991.00	12	13	5,752,593.00	121,663.50	1,416,446.00	780,328.00	250	200	6,238,355.00	128	146	1,270,214.00	881,841.50	107,357.00	77,095,640.00	3.23
12/13/2008	54,109,617.00	1129 (\$1, N) - 12/08/08	3,315,658.00	4	5	5,580,770.00	114,295.50	1,384,858.00	766,893.00	225	250	9,150,536.00	170	207	1,691,121.00	846,176.50	101,919.50	77,061,844.50	3.22
12/20/2008	55,777,328.00	1104 (\$2,N), 1105 (\$5,N), 1106 (\$10,N) - 12/15/08	3,432,340.00	6	7	5,741,120.00	116,075.50	1,401,805.00	741,945.00	200	200	2,736,234.00	12	16	687,875.00	871,579.50	104,543.00	71,610,845.00	3.00
12/27/2008	57,597,885.00	1077 (\$1,N), 1110 (\$1,N) - 12/22/08	3,582,169.00	8	4	5,628,081.50	115,323.00	1,340,590.00	708,906.00	225	250	2,842,167.00	22	29	706,042.00	828,346.00	100,146.00	73,449,655.50	3.07
1/3/2009	57,582,115.00	0	3,784,763.00	5	6	5,690,220.50	120,519.50	1,406,807.00	934,000.00	325	525	3,190,457.00	37	46	780,850.00	885,674.00	106,736.50	74,482,142.50	3.12
1/10/2009	54,250,945.00	1135 (\$2,N), 1136 (\$5,N) - 1/5/09	3,582,400.00	7	8	5,476,890.00	116,674.50	1,403,531.00	1,267,847.00	675	900	2,701,275.00	12	16	681,574.00	868,919.00	104,109.50	70,454,165.00	2.95
1/17/2009	51,625,339.00	1137 (\$1,N), 1138 (\$3,N) - 1/12/09	3,668,302.50	9	10	5,443,159.00	112,605.00	1,387,958.00	778,563.00	200	200	2,683,707.00	22	12	675,416.00	852,987.00	98,907.50	67,326,944.00	2.82
1/24/2009	52,789,573.00	1115 (\$2,N), 1116 (\$5,N) - 1/19/09	3,723,835.50	11	12	5,514,547.50	115,827.50	1,376,695.00	860,483.00	225	325	2,692,611.00	16	21	676,936.00	836,996.00	99,541.00	68,687,045.50	2.87
1/31/2009	55,453,471.00	1080 (\$1,N), 1024 (\$20,R) - 1/26/09; 1062 (\$5,N) - 1/28/09	3,837,299.00	13	14	5,700,714.50	121,794.50	1,403,756.00	1,070,879.00	450	600	3,002,883.00	30	40	731,253.00	925,937.50	113,755.50	72,361,743.00	3.03
2/7/2009	62,247,711.00	1035 (\$2,N), 1144 (\$5,N), 1058 (\$10, N) - 2/2/09	4,092,117.00	15	16	6,336,717.00	134,543.00	1,481,812.00	842,746.00	200	225	3,509,032.00	50	60	829,550.00	1,007,529.00	120,267.50	80,602,024.50	3.37
2/14/2009	60,509,056.00	1146 (\$7,N), 1089 (\$1,N) - 2/9/09	4,119,193.00	17	18	6,363,028.00	133,901.50	1,445,616.00	1,013,987.00	325	450	4,082,572.00	73	85	928,813.00	1,010,898.50	120,068.50	79,727,133.50	3.34
2/21/2009	59,194,623.00	1046 (\$2,N), 1140 (\$5,N) - 2/16/09	4,326,401.00	19	20	6,038,807.50	128,493.00	1,439,312.00	1,268,803.00	600	750	5,614,471.00	103	120	1,178,133.00	988,075.00	115,703.50	80,292,822.00	3.36
2/28/2009	58,857,216.00	1132 (\$10,N), 1149 (\$1,N) - 2/23/09	4,526,304.00	21	22	6,084,457.50	128,979.50	1,439,607.00	1,668,414.00	925	1,150	7,676,975.00	145	171	1,504,895.00	973,121.00	114,171.00	82,974,140.00	3.47

Texas Lottery Commission - Weekly Sales Summary for FY 2009 (Unaudited)

Week Ended	Instant Games	New Games & Dates	Lotto Texas	Jackpot		Pick 3	Pick 3 Sum It Up	Cash 5	Texas Two Step	Jackpot		Mega Millions	Jackpot		Megaplier	Daily 4	Daily 4 Sum It Up	Total	Per Cap.
				W	S					M/T	TH/F		T	F					
3/7/2009	59,552,257.00	0	4,928,440.00	23	25	6,133,789.00	128,599.00	1,487,185.00	1,984,358.00	1,350	1,600	6,898,457.00	212	12	1,349,427.00	971,644.50	113,236.00	83,547,392.50	3.50
3/14/2009	53,754,084.00	1139 (\$2.N), 1079 (\$5.N) - 3/09/09	4,752,592.00	26	28	5,850,166.00	120,684.50	1,418,127.00	2,112,571.00	1,900	2,150	2,782,204.00	16	26	698,214.00	925,615.00	109,657.50	72,523,915.00	3.03
3/21/2009	52,581,107.00	1107 (\$1.N), 1154 (\$3.N), 1057 (\$10.N) - 3/16/09; 1102 (\$2.N) - 3/19/09	3,437,818.00	4	5	5,776,041.50	117,294.00	1,399,720.00	880,620.00	200	225	2,595,785.00	12	16	653,517.00	934,185.00	108,057.50	68,484,145.00	2.87
3/28/2009	52,560,961.00	1130 (\$5.N), 1150 (\$10.N) - 3/23/09	3,486,731.00	6	7	5,633,454.50	114,269.50	1,381,550.00	901,673.00	300	200	2,845,499.00	24	34	701,971.00	925,093.50	104,691.50	68,655,894.00	2.87
4/4/2009	56,249,759.00	1151 (\$2.N), 1101 (\$50.N) - 3/30/09	3,746,083.00	8	9	5,893,043.50	122,332.00	1,429,598.00	940,614.00	225	300	3,321,274.00	43	54	794,282.00	998,042.00	111,733.50	73,606,761.00	3.08
4/11/2009	54,440,987.00	1153 (\$2.N) - 4/07/09; 1152 (\$3.N) - 4/08/09	3,594,176.00	10	4	5,893,551.00	120,491.50	1,394,879.00	933,807.00	425	200	3,772,700.00	65	78	857,890.00	987,127.50	105,977.50	72,101,586.50	3.02
weekly change	-3.22%		-4.06%			0.01%	-1.50%	-2.43%	-0.72%			13.59%			8.01%	-1.09%	-5.15%	-2.04%	
	SALES		SALES			SALES	SALES	SALES	SALES			SALES			SALES	SALES	SALES	SALES	% of Sales
Startup to date	35,191,102,792.00		10,396,989,511.00			3,476,107,046.50	10,218,170.50	2,163,270,103.00	458,100,502.00			1,039,671,379.50			244,500,654.00	69,841,896.00	11,731,934.00	53,269,667,960.50	100.0%
Calendar Year to date	809,199,117.00		57,620,219.00			84,947,547.50	175,670.50	20,531,649.00	16,941,365.00			55,714,476.00			12,632,839.00	13,634,237.50	1,591,126.50	1,072,988,247.00	100.0%
Fiscal Year to date 2009	1,710,516,790.00		117,892,464.00			177,388,094.00	3,732,340.50	44,114,093.00	31,834,784.00			113,532,784.50			26,292,620.00	27,624,924.50	3,393,130.50	2,256,322,025.00	100.0%