



*WEEKLY SALES SUMMARY*

Unaudited

[Week Ending: 04/13/2013](#)

Texas Lottery Commission  
Fiscal Year to Date Sales Comparison  
Unaudited

Through the week ending 04/13/2013 (33 weeks)

Sales by Game	FY 2011 *	FY 2012 **	FY 2013	\$ Change		% Change	
				FY 2013 to FY 2011	FY 2013 to FY 2012	FY 2013 to FY 2011	FY 2013 to FY 2012
Instants	\$ 1,796,950,184	\$ 1,919,905,704	\$ 2,008,589,172	\$ 211,638,988	\$ 88,683,468	11.8%	4.6%
Lotto Texas	109,416,724	109,222,890	93,443,466	-15,973,258	-15,779,424	-14.6%	-14.4%
Pick 3	172,758,545	169,574,418	167,174,886	-5,583,659	-2,399,532	-3.2%	-1.4%
Pick 3 Sum It Up	3,494,586	3,509,605	3,140,562	-354,024	-369,043	-10.1%	-10.5%
Cash Five	40,754,242	41,146,867	35,002,915	-5,751,327	-6,143,952	-14.1%	-14.9%
Texas Two Step	29,692,419	41,544,837	36,776,623	7,084,204	-4,768,214	23.9%	-11.5%
Mega Millions	127,544,753	162,506,378	64,141,421	-63,403,332	-98,364,957	-49.7%	-60.5%
Megaplier	25,837,318	29,826,882	15,069,444	-10,767,874	-14,757,438	-41.7%	-49.5%
Daily 4	36,256,909	40,387,131	45,304,774	9,047,866	4,917,644	25.0%	12.2%
Daily 4 Sum It Up	2,801,437	2,962,923	2,957,469	156,032	-5,454	5.6%	-0.2%
Powerball	57,717,411	97,674,498	166,622,337	108,904,926	68,947,840	188.7%	70.6%
Power Play	13,586,413	17,213,292	17,582,099	3,995,686	368,808	29.4%	2.1%
All or Nothing	-	-	53,150,907	53,150,907	53,150,907	-	-
<b>Total</b>	<b>\$ 2,416,810,939</b>	<b>\$ 2,635,475,423</b>	<b>\$ 2,708,956,075</b>	<b>\$ 292,145,136</b>	<b>\$ 73,480,652</b>	<b>12.1%</b>	<b>2.8%</b>

\* 3 extra days

\*\* 2 extra days

Texas Lottery Commission  
Fiscal Year to Date Cumulative Average Sales Comparison  
Unaudited

Through the week ending 04/13/2013 (33 weeks)

Sales by Game	FY 2011	FY 2012	FY 2013
Instant	\$ 7,881,360	\$ 8,457,734	\$ 8,927,063
Lotto Texas	479,898	481,158	415,304
Pick 3	757,713	747,024	742,999
Pick 3 Sum It Up	15,327	15,461	13,958
Cash Five	178,747	181,264	155,569
Texas Two Step	130,230	183,017	163,452
Mega Millions	559,407	715,887	285,073
Megaplier	113,322	131,396	66,975
Daily 4	159,022	177,917	201,355
Daily 4 Sum It Up	12,287	13,053	13,144
Powerball	253,147	430,284	740,544
Power Play	59,590	75,829	78,143
All or Nothing	-	-	244,935 *
<b>Total</b>	<b>\$ <u>10,600,048</u></b>	<b>\$ <u>11,610,024</u></b>	<b>\$ <u>12,048,514</u></b>
	thru 04/16/2011 228 days	thru 04/14/2012 227 days	thru 04/13/2013 225 days * 217 days

Texas Lottery Commission  
Fiscal Year Over Year Change in Sales  
Unaudited  
FY 2013 Compared to FY 2012

Week	FY 2013 Week Ending	INSTANT TICKETS				DRAW GAMES				TOTAL SALES			
		FY 2013	FY 2012	Difference	% change - Cumulative Sales	FY 2013	FY 2012	Difference	% change - Cumulative Sales	FY 2013	FY 2012	Difference	% change - Cumulative Sales
1	9/1/2012**	\$9,611,328	\$25,147,181	(\$15,535,853)	-61.8%	\$3,712,535	\$9,704,561	(\$5,992,026)	-61.7%	\$13,323,863	\$34,851,742	(\$21,527,879)	-61.8%
2	9/8/2012	\$56,941,761	\$50,591,068	\$6,350,693	12.6%	\$19,305,417	\$17,681,853	\$1,623,564	9.2%	\$76,247,178	\$68,272,921	\$7,974,257	11.7%
3	9/15/2012	\$56,302,875	\$49,835,063	\$6,467,812	13.0%	\$20,857,230	\$16,842,326	\$4,014,904	23.8%	\$77,160,105	\$66,677,389	\$10,482,716	15.7%
4	9/22/2012	\$54,974,438	\$49,777,138	\$5,197,300	10.4%	\$20,570,277	\$17,504,800	\$3,065,477	17.5%	\$75,544,715	\$67,281,938	\$8,262,777	12.3%
5	9/29/2012	\$54,606,674	\$51,040,274	\$3,566,400	7.0%	\$20,462,690	\$18,653,100	\$1,809,591	9.7%	\$75,069,364	\$69,693,374	\$5,375,991	7.7%
6	10/6/2012	\$59,223,327	\$53,715,157	\$5,508,170	10.3%	\$19,279,973	\$17,225,680	\$2,054,293	11.9%	\$78,503,300	\$70,940,837	\$7,562,463	10.7%
7	10/13/2012	\$57,075,606	\$51,942,121	\$5,133,485	9.9%	\$18,638,467	\$17,854,980	\$783,487	4.4%	\$75,714,073	\$69,797,101	\$5,916,972	8.5%
8	10/20/2012	\$56,630,134	\$52,837,769	\$3,792,365	7.2%	\$18,998,943	\$19,558,519	(\$559,577)	-2.9%	\$75,629,077	\$72,396,288	\$3,232,789	4.5%
9	10/27/2012	\$55,789,743	\$52,206,644	\$3,583,099	6.9%	\$20,130,190	\$21,504,565	(\$1,374,376)	-6.4%	\$75,919,933	\$73,711,209	\$2,208,724	3.0%
10	11/3/2012	\$58,142,777	\$56,265,310	\$1,877,467	3.3%	\$20,638,008	\$20,870,086	(\$232,079)	-1.1%	\$78,780,785	\$77,135,396	\$1,645,389	2.1%
11	11/10/2012	\$57,484,804	\$55,682,645	\$1,802,159	3.2%	\$20,862,872	\$17,862,404	\$3,000,468	16.8%	\$78,347,676	\$73,545,049	\$4,802,627	6.5%
12	11/17/2012	\$55,805,228	\$54,978,079	\$827,149	1.5%	\$21,660,705	\$17,879,985	\$3,780,721	21.1%	\$77,465,933	\$72,858,064	\$4,607,870	6.3%
13	11/24/2012	\$61,331,977	\$53,942,448	\$7,389,529	13.7%	\$27,172,853	\$16,877,145	\$10,295,708	61.0%	\$88,504,830	\$70,819,593	\$17,685,237	25.0%
14	12/1/2012	\$58,420,598	\$57,153,469	\$1,267,129	2.2%	\$62,797,943	\$18,298,636	\$44,499,307	243.2%	\$121,218,541	\$75,452,105	\$45,766,436	60.7%
15	12/8/2012	\$62,489,745	\$55,318,284	\$7,171,461	13.0%	\$19,630,155	\$19,033,326	\$596,829	3.1%	\$82,119,900	\$74,351,610	\$7,768,290	10.4%
16	12/15/2012	\$59,661,880	\$58,612,629	\$1,049,251	1.8%	\$20,064,982	\$20,045,279	\$19,704	0.1%	\$79,726,862	\$78,657,908	\$1,068,955	1.4%
17	12/22/2012	\$63,556,886	\$60,628,256	\$2,928,630	4.8%	\$19,084,653	\$22,572,986	(\$3,488,333)	-15.5%	\$82,641,539	\$83,201,242	(\$559,703)	-0.7%
18	12/29/2012	\$63,547,886	\$63,065,007	\$482,879	0.8%	\$17,359,874	\$19,948,521	(\$2,588,647)	-13.0%	\$80,907,760	\$83,013,528	(\$2,105,768)	-2.5%
19	1/5/2013	\$60,452,721	\$60,479,896	(\$27,175)	0.0%	\$18,833,047	\$17,331,888	\$1,501,159	8.7%	\$79,285,768	\$77,811,784	\$1,473,984	1.9%
20	1/12/2013	\$58,862,997	\$57,689,526	\$1,173,471	2.0%	\$18,879,167	\$17,568,732	\$1,310,435	7.5%	\$77,742,164	\$75,258,258	\$2,483,906	3.3%
21	1/19/2013	\$58,494,057	\$58,704,854	(\$210,797)	-0.4%	\$19,258,004	\$19,886,540	(\$628,537)	-3.2%	\$77,752,061	\$78,591,394	(\$839,334)	-1.1%
22	1/26/2013	\$57,871,744	\$57,611,325	\$260,419	0.5%	\$20,093,215	\$20,641,697	(\$548,483)	-2.7%	\$77,964,959	\$78,253,022	(\$288,064)	-0.4%
23	2/2/2013	\$61,846,715	\$65,553,366	(\$3,706,651)	-5.7%	\$21,032,335	\$23,689,855	(\$2,657,521)	-11.2%	\$82,879,050	\$89,243,221	(\$6,364,172)	-7.1%
24	2/9/2013	\$70,374,906	\$75,070,485	(\$4,695,579)	-6.3%	\$21,183,638	\$28,361,583	(\$7,177,945)	-25.3%	\$91,558,544	\$103,432,068	(\$11,873,524)	-11.5%
25	2/16/2013	\$71,002,438	\$66,679,947	\$4,322,491	6.5%	\$19,295,197	\$19,588,615	(\$293,418)	-1.5%	\$90,297,635	\$86,268,562	\$4,029,073	4.7%
26	2/23/2013	\$71,203,934	\$64,868,899	\$6,335,035	9.8%	\$19,729,989	\$19,965,388	(\$235,399)	-1.2%	\$90,933,923	\$84,834,287	\$6,099,636	7.2%
27	3/2/2013	\$74,551,567	\$67,135,065	\$7,416,502	11.0%	\$20,278,327	\$20,947,181	(\$668,854)	-3.2%	\$94,829,894	\$88,082,246	\$6,747,648	7.7%
28	3/9/2013	\$75,360,138	\$68,299,006	\$7,061,132	10.3%	\$21,447,763	\$22,152,639	(\$704,876)	-3.2%	\$96,807,901	\$90,451,645	\$6,356,256	7.0%
29	3/16/2013	\$70,065,528	\$65,013,692	\$5,051,836	7.8%	\$22,055,563	\$23,351,718	(\$1,296,155)	-5.6%	\$92,121,091	\$88,365,410	\$3,755,682	4.3%
30	3/23/2013	\$70,137,284	\$64,035,255	\$6,102,029	9.5%	\$28,709,024	\$27,416,609	\$1,292,415	4.7%	\$98,846,308	\$91,451,864	\$7,394,444	8.1%
31	3/30/2013	\$68,758,522	\$65,135,991	\$3,622,531	5.6%	\$18,597,091	\$84,628,987	(\$66,031,896)	-78.0%	\$87,355,613	\$149,764,978	(\$62,409,365)	-41.7%
32	4/6/2013	\$73,270,054	\$66,860,957	\$6,409,097	9.6%	\$20,048,992	\$19,899,400	\$149,592	0.8%	\$93,319,046	\$86,760,357	\$6,558,689	7.6%
33	4/13/2013	\$64,738,900	\$64,028,898	\$710,002	1.1%	\$19,697,793	\$20,220,141	(\$522,349)	-2.6%	\$84,436,693	\$84,249,039	\$187,654	0.2%
34	4/20/2013		\$63,623,892				\$20,974,282				\$84,598,174		
35	4/27/2013		\$61,743,623				\$20,267,388				\$82,011,011		
36	5/4/2013		\$64,851,962				\$20,642,982				\$85,494,944		
37	5/11/2013		\$65,472,556				\$19,140,768				\$84,613,324		
38	5/18/2013		\$60,572,658				\$18,342,814				\$78,915,472		
39	5/25/2013		\$58,959,028				\$18,618,060				\$77,577,088		
40	6/1/2013		\$57,409,086				\$19,014,645				\$76,423,731		
41	6/8/2013		\$59,845,545				\$20,527,958				\$80,373,503		
42	6/15/2013		\$57,021,498				\$19,386,186				\$76,407,684		

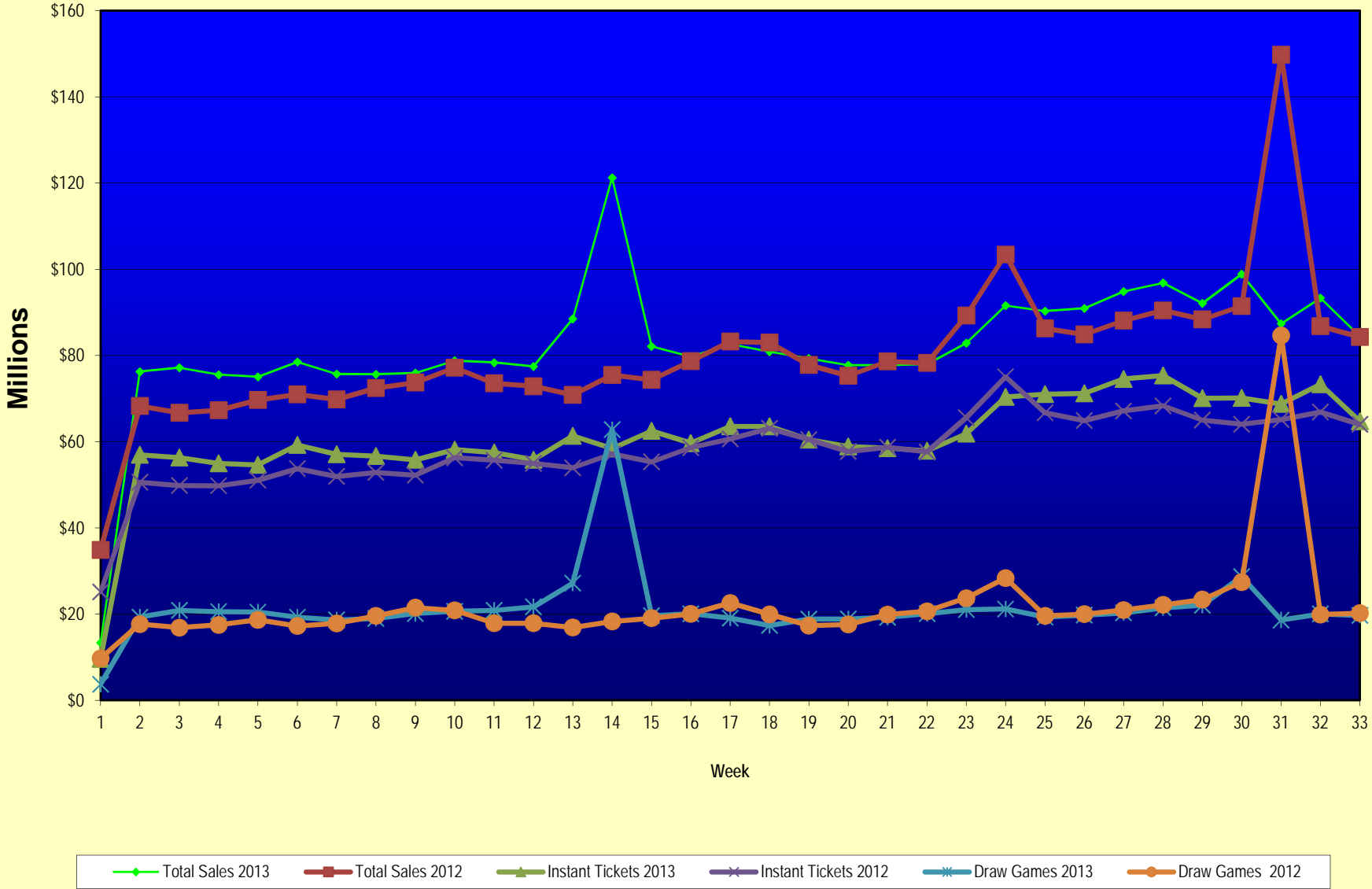
Note: Week 1 is not a full week of sales as this report is prepared on a Fiscal Year basis.

Texas Lottery Commission  
Fiscal Year Over Year Change in Sales  
Unaudited  
FY 2013 Compared to FY 2012

Week	FY 2013 Week Ending	INSTANT TICKETS				DRAW GAMES				TOTAL SALES			
		FY 2013	FY 2012	Difference	% change - Cumulative Sales	FY 2013	FY 2012	Difference	% change - Cumulative Sales	FY 2013	FY 2012	Difference	% change - Cumulative Sales
43	6/22/2013		\$57,892,076				\$17,594,154				\$75,486,230		
44	6/29/2013		\$57,497,435				\$18,153,658				\$75,651,093		
45	7/6/2013		\$60,345,000				\$19,059,152				\$79,404,152		
46	7/13/2013		\$57,683,321				\$18,751,043				\$76,434,364		
47	7/20/2013		\$57,083,343				\$18,769,201				\$75,852,544		
48	7/27/2013		\$54,006,781				\$18,934,103				\$72,940,884		
49	8/3/2013		\$56,557,409				\$20,206,705				\$76,764,114		
50	8/10/2013		\$57,799,452				\$22,832,120				\$80,631,572		
51	8/17/2013		\$54,845,724				\$25,435,624				\$80,281,348		
52	8/24/2013		\$55,661,277				\$17,524,474				\$73,185,751		
	8/31/2013		\$47,363,984				\$14,929,528				\$62,293,512		
Total thru Current Week		\$2,008,589,172	\$1,919,905,704	\$88,683,468	4.6%	\$700,366,903	\$715,569,719	(\$15,202,817)	-2.1%	\$2,708,956,075	\$2,635,475,423	\$73,480,652	2.8%
Fiscal Year Total		\$2,008,589,172	\$3,086,141,354			\$700,366,903	\$1,104,674,559			\$2,708,956,075	\$4,190,815,913		

\*\* FY 2012 includes 3 days; FY 2013 includes 1 day.

### Texas Lottery Commission Fiscal Year Over Year Change in Sales



Note: Week 1 is not a full week of sales as this report is prepared on a Fiscal Year basis.

Texas Lottery Commission  
Instant Tickets by Price Point  
Sales, Prize Expense, Sales Contribution and Payout Percentage With Year Over Year Changes  
Unaudited

Fiscal Year	Price Point	# of Active Games	FY Sales	% of Instant Ticket Sales	Year over Year Change in Sales	FY Prize Expense	Year over Year Change in Prize Expense	FY Sales Contribution	Year over Year Change in Contribution	Average Prize Payout %	Year over Year Change in Payout %
2012	\$1.00	32	140,319,013	7.3%		85,492,063		54,826,950		60.9%	0.3%
thru	\$2.00	33	259,521,888	13.5%		168,789,252		90,732,636		65.0%	-0.8%
4/14/2012	\$3.00	17	230,031,114	12.0%		150,798,910		79,232,204		65.6%	-0.1%
	\$5.00	43	625,571,665	32.6%		425,794,527		199,777,138		68.1%	0.2%
	\$7.00	4	18,186,714	0.9%		12,366,848		5,819,866		68.0%	0.0%
	\$10.00	17	314,144,830	16.4%		221,869,187		92,275,643		70.6%	-0.5%
	\$20.00	6	251,329,980	13.1%		187,696,886		63,633,094		74.7%	0.0%
	\$50.00	2	80,800,500	4.2%		62,745,632		18,054,868		77.7%	0.0%
<b>Total</b>		<b>154</b>	<b>\$1,919,905,704</b>			<b>\$1,315,553,306</b>		<b>\$604,352,398</b>		<b>68.5%</b>	<b>0.0%</b>
2013	\$1.00	30	121,660,323	6.1%		74,370,933		47,289,390		61.1%	0.8%
thru	\$2.00	35	257,702,948	12.8%		167,510,201		90,192,747		65.0%	-0.1%
4/13/2013	\$3.00	19	240,654,588	12.0%		157,709,498		82,945,090		65.5%	0.0%
	\$5.00	51	627,999,815	31.3%		427,192,951		200,806,864		68.0%	0.0%
	\$7.00	2	16,202,578	0.8%		11,012,346		5,190,232		68.0%	0.0%
	\$10.00	12	371,604,680	18.5%		263,979,484		107,625,196		71.0%	0.2%
	\$20.00	8	278,755,440	13.9%		208,694,702		70,060,738		74.9%	0.1%
	\$50.00	3	94,008,800	4.7%		72,986,168		21,022,632		77.6%	0.0%
<b>Total</b>		<b>160</b>	<b>\$2,008,589,172</b>			<b>\$1,383,456,282</b>		<b>\$625,132,890</b>		<b>68.9%</b>	<b>0.4%</b>
Variance	\$1.00	-2	-18,658,690		-13.3%	-11,121,130	-13.0%	-7,537,560	-13.7%	0.20%	
2013 to	\$2.00	2	-1,818,940		-0.7%	-1,279,051	-0.8%	-539,889	-0.6%	-0.04%	
2012	\$3.00	2	10,623,474		4.6%	6,910,588	4.6%	3,712,886	4.7%	-0.02%	
	\$5.00	8	2,428,150		0.4%	1,398,424	0.3%	1,029,726	0.5%	-0.04%	
	\$7.00	-2	-1,984,136		-10.9%	-1,354,503	-11.0%	-629,633	-10.8%	-0.03%	
	\$10.00	-5	57,459,850		18.3%	42,110,297	19.0%	15,349,553	16.6%	0.41%	
	\$20.00	2	27,425,460		10.9%	20,997,815	11.2%	6,427,645	10.1%	0.19%	
	\$50.00	1	13,208,300		16.3%	10,240,536	16.3%	2,967,764	16.4%	-0.02%	
<b>Total</b>		<b>6</b>	<b>\$88,683,468</b>		<b>4.6%</b>	<b>\$67,902,976</b>	<b>5.2%</b>	<b>\$20,780,492</b>	<b>3.4%</b>	<b>0.36%</b>	

Notes - Instant Ticket Variances

Texas Lottery Commission  
**Instant Tickets by Price Point**  
**Sales, Prize Expense, Sales Contribution and Payout Percentage With Year Over Year Changes**  
 Unaudited

			FY 2013		FY 2012	Difference
Sales	\$1 - \$7	1	\$1,264,220,252		\$1,273,630,394	-\$9,410,142
Prize Exp.	\$1 - \$7	1	\$837,795,928		\$843,241,600	-\$5,445,672
Sales Cont.	\$1 - \$7	1	\$426,424,324		\$430,388,794	-\$3,964,470
Prize Exp. %	\$1 - \$7	1	66.3%		66.2%	0.1%
			FY 2013		FY 2012	Difference
Sales	\$10 - \$50	2	\$744,368,920		\$646,275,310	\$98,093,610
Prize Exp.	\$10 - \$50	2	\$545,660,354		\$472,311,705	\$73,348,648
Sales Cont.	\$10 - \$50	1	\$198,708,566		\$173,963,605	\$24,744,962
Prize Exp. %	\$10 - \$50	2	73.3%		73.1%	0.2%
			FY 2013		FY 2012	Difference
Sales	Instant		\$2,008,589,172		\$1,919,905,704	\$88,683,468
Prize Exp.	Instant		\$1,383,456,282		\$1,315,553,306	\$67,902,976
Sales Cont.	Instant		\$625,132,890		\$604,352,398	\$20,780,492
Prize Exp. %	Instant		68.9%		68.5%	0.4%

			FY 2013		FY 2012	Difference
Sales	\$1 - \$10		\$1,635,824,932		\$1,587,775,224	\$48,049,708
Prize Exp.	\$1 - \$10		\$1,101,775,412		\$1,065,110,787	\$36,664,625
Sales Cont.	\$1 - \$10		\$534,049,520		\$522,664,437	\$11,385,083
Prize Exp. %	\$1 - \$10		67.4%		67.1%	0.3%
			FY 2013		FY 2012	Difference
Sales	\$20 - \$50		\$372,764,240		\$332,130,480	\$40,633,760
Prize Exp.	\$20 - \$50		\$281,680,870		\$250,442,518	\$31,238,351
Sales Cont.	\$20 - \$50		\$91,083,370		\$81,687,962	\$9,395,409
Prize Exp. %	\$20 - \$50		75.6%		75.4%	0.2%
			FY 2013		FY 2012	Difference
Sales	Instant		\$2,008,589,172		\$1,919,905,704	\$88,683,468
Prize Exp.	Instant		\$1,383,456,282		\$1,315,553,306	\$67,902,976
Sales Cont.	Instant		\$625,132,890		\$604,352,398	\$20,780,492
Prize Exp. %	Instant		68.9%		68.5%	0.4%



Texas Lottery Commission  
**Weekly Sales Summary**  
**& Comparison to Previous Week**  
 Unaudited

	Week Ending 04/13/2013		Week Ending 04/06/2013			
	<u>THIS WEEK</u>	% of Sales	<u>LAST WEEK</u>	% of Sales	<u>\$ change</u>	<u>% change</u>
Total Sales	<u>\$84,436,693</u>		<u>\$93,319,046</u>		<u>-\$8,882,353</u>	-9.52%
Instant Tickets	<u>\$64,738,900</u>	76.7%	<u>\$73,270,054</u>	78.5%	<u>-\$8,531,154</u>	-11.64%
Lotto	\$2,446,701	2.9%	\$2,599,044	2.8%	-\$152,343	-5.86%
Pick 3	\$5,338,308	6.3%	\$5,604,670	6.0%	-\$266,363	-4.75%
Pick 3 Sum It Up	\$100,575	0.1%	\$105,096	0.1%	-\$4,522	-4.30%
Cash Five	\$1,079,753	1.3%	\$1,113,516	1.2%	-\$33,763	-3.03%
Texas Two Step	\$1,245,341	1.5%	\$1,442,797	1.5%	-\$197,456	-13.69%
Mega Millions	\$2,326,285	2.8%	\$2,176,834	2.3%	\$149,451	6.87%
Megaplier	\$524,253	0.6%	\$503,159	0.5%	\$21,094	4.19%
Daily 4	\$1,550,435	1.8%	\$1,610,636	1.7%	-\$60,201	-3.74%
Daily 4 Sum It Up	\$92,346	0.1%	\$103,097	0.1%	-\$10,751	-10.43%
Powerball	\$3,014,428	3.6%	\$2,793,981	3.0%	\$220,447	7.89%
Power Play	\$401,719	0.5%	\$377,717	0.4%	\$24,002	6.35%
All or Nothing	\$1,577,650	1.9%	\$1,618,445	1.7%	-\$40,795	-2.52%
Total Draw Game Sales	<u>\$19,697,793</u>		<u>\$20,048,992</u>		<u>-\$351,199</u>	-1.75%

\* Totals may not sum due to rounding.

Texas Lottery Commission  
Weekly Sales Summary  
Unaudited

INSTANT TICKETS  
TOP TEN SELLING GAMES

For the Week Ending: 04/13/13

Rank	Price Point	Game	Sales (Millions)
1	\$ 10	10X MEGA MONEY	\$ 5.774
2	\$ 20	CASH EXCITEMENT	\$ 3.484
3	\$ 5	GREAT 8'S	\$ 3.460
4	\$ 5	\$75,000 CASHWORD-O-RAMA	\$ 2.785
5	\$ 5	SIZZLIN' 7'S	\$ 2.770
6	\$ 5	MAXIMUM JACKPOT	\$ 2.597
7	\$ 3	LOTERIA TEXAS	\$ 2.495
8	\$ 10	\$200 MILLION CASH SPECTACULAR	\$ 2.269
9	\$ 20	\$500 MILLION EXTREME CASH BLAST	\$ 2.243
10	\$ 50	\$7,500,000 FORTUNE	\$ 2.060

Texas Lottery Commission  
Prize Payout Tracking Report  
Unaudited

Through Week Ending 04/13/13

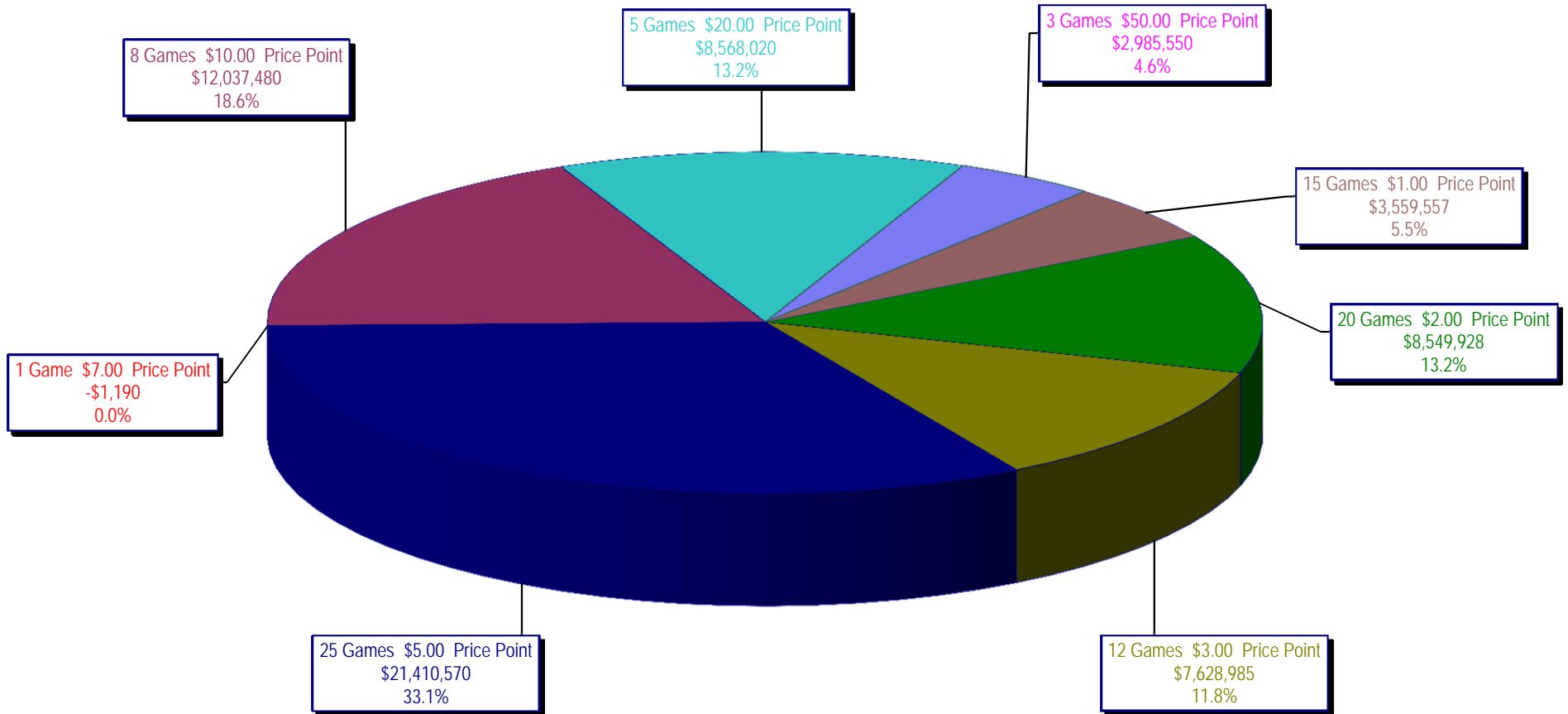
Draw Game Sales

		FY Sales Through Week Ending 4/13/2013		FY Prize Expense Through Week Ending 4/13/2013	Actual* Prize Payout	Base Payout (Prize Pool)
Lotto	\$	93,443,466	\$	75,437,659	80.73%	50.00%
Pick 3		167,174,886		84,123,480	50.32%	50.00%
Pick 3 Sum It Up		3,140,562		1,574,553	50.14%	50.00%
Cash Five		35,002,915		17,503,347	50.01%	50.00%
Texas Two Step		36,776,623		18,532,997	50.39%	50.00%
Mega Millions		64,141,421		31,457,206	49.04%	50.00%**
Megaplier		15,069,444		7,195,462	47.75%	N/A
Daily 4		45,304,774		22,781,350	50.28%	50.00%
Daily 4 Sum It Up		2,957,469		1,236,814	41.82%	50.00%
Powerball		166,622,337		85,984,679	51.60%	50.00%**
Power Play		17,582,099		9,657,569	54.93%	N/A
All or Nothing		53,150,907		30,233,170	56.88%	50.00%
<b>Totals</b>	\$	<b>700,366,903</b>	\$	<b>385,718,285</b>	<b>55.07%</b>	

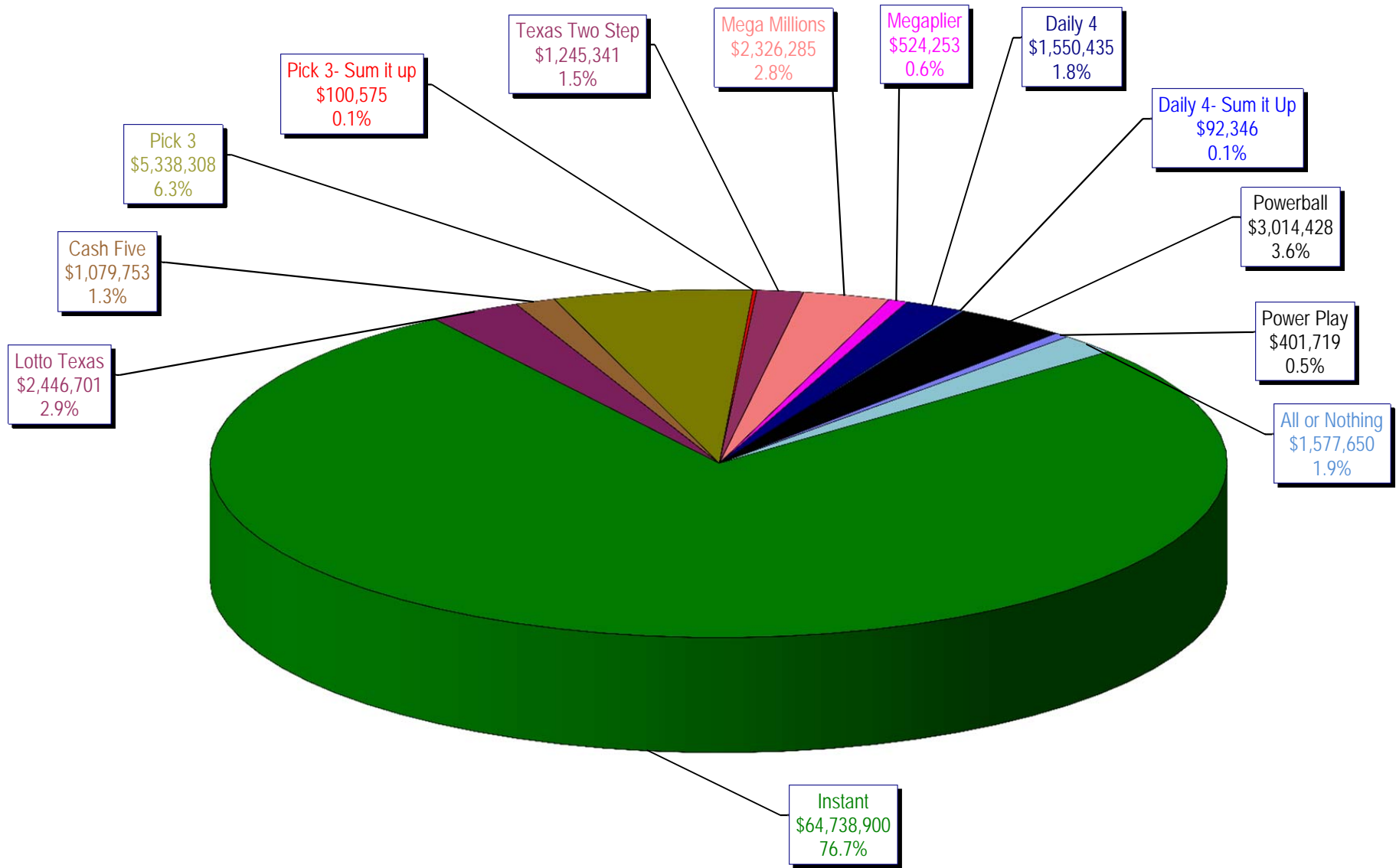
\* Before Unclaimed Prizes

\*\* Estimated; depends on # of guaranteed prizes won in Texas

Texas Lottery Commission  
Instant Ticket Sales  
For the Week Ending 04/13/13  
(Unaudited)



**Texas Lottery Commission**  
**All Game Sales**  
**For the Week Ending 04/13/13**  
**(Unaudited)**



Texas Lottery Commission - Weekly Sales Summary for FY 2013 (Unaudited)

Week Ended	Instant Games	New Games & Dates	Lotto Texas	Jackpot W	S	Pick 3	Pick 3 Sum It Up	Cash Five	Texas Two Step	Jackpot M	TH	Mega Millions	Jackpot T	F	Megaplier	Daily 4	Daily 4 Sum It Up	Powerball	Jackpot W	S	Power Play	All or Nothing	Total	Per Cap.
9/1/2012	56,975,312	1446 (\$1, N); 1444 (\$2, N) - 08/27/12	2,972,415	12	13	4,967,337	105,441	1,198,597	1,455,689	500	675	2,769,421	73	83	612,072	1,419,103	97,265	2,680,694	70	80	364,030		75,617,375	2.95
9/8/2012	56,941,761	1440 (\$2, N); 1458 (\$3, N); 1459 (\$5, N) - 09/03/12	3,005,564	14	15	5,112,132	106,959	1,185,494	1,179,003	875	200	3,140,536	93	105	665,392	1,412,279	99,861	3,002,910	90	100	395,287		76,247,178	2.97
9/15/2012	56,302,875	1452 (\$3, N) - 09/10/12	2,999,894	16	17	4,785,209	95,720	1,118,519	894,412	225	200	2,684,227	120	12	580,869	1,290,478	90,795	3,373,296	110	125	417,470	2,526,342	77,160,105	3.01
9/22/2012	54,974,438	1460 (\$1, N); 1461 (\$5, N) - 09/17/12	2,986,898	18	19	4,611,684	89,173	1,091,440	986,264	225	325	1,874,336	15	12	452,082	1,258,191	86,390	4,122,790	149	174	479,344	2,531,686	75,544,715	2.94
9/29/2012	54,606,674	1462 (\$2, N); 1472 (\$10, N) - 09/24/12	3,047,519	20	21	4,708,250	90,752	1,077,739	1,313,257	475	625	1,884,366	14	21	452,334	1,278,847	87,211	3,779,359	200	40	445,091	2,297,966	75,069,364	2.92
10/6/2012	59,223,327	1464 (\$5, N) - 10/01/12	3,164,231	22	23	4,947,571	96,251	1,121,146	1,188,386	800	200	2,055,918	28	36	482,303	1,310,612	89,270	2,266,428	50	40	312,877	2,244,980	78,503,300	3.06
10/13/2012	57,075,606	1465 (\$1, N); 1466 (\$20, N) - 10/08/2012	3,133,742	24	25	4,793,793	89,663	1,074,687	865,146	225	200	2,163,099	45	53	492,614	1,261,858	84,585	2,241,120	50	60	309,684	2,128,476	75,714,073	2.95
10/20/2012	56,630,134	1467 (\$1, N); 1468 (\$5, N) - 10/15/12	3,172,820	26	27	4,959,071	88,413	1,074,980	970,100	225	325	1,984,966	61	12	466,730	1,296,602	84,868	2,447,518	70	80	328,436	2,124,439	75,629,077	2.95
10/27/2012	55,789,743	1469 (\$2, N); 1470 (\$10, N) - 10/22/2012	3,204,694	28	29	5,550,567	96,242	1,063,201	1,226,578	450	600	1,778,725	13	21	430,528	1,381,019	91,618	2,914,062	90	100	371,273	2,021,684	75,919,933	2.96
11/3/2012	58,142,777	1503 (\$5, N) - 10/29/2012	3,392,650	30	31	5,501,964	101,742	1,078,593	860,073	200	225	1,950,117	27	32	462,385	1,393,099	93,773	3,466,242	110	124	424,170	1,913,200	78,780,785	3.07
11/10/2012	57,484,804	1475 (\$1, N); 1476 (\$3, N) - 11/05/2012	3,061,999	32	4	5,468,924	100,767	1,083,928	837,666	200	200	1,783,099	12	13	430,343	1,402,194	94,451	4,246,246	143	168	491,538	1,861,718	78,347,676	3.05
11/17/2012	55,805,228	1477 (\$2, N); 1478 (\$5, N) - 11/12/2012	2,599,190	5	6	5,248,059	91,989	1,059,723	920,319	225	300	1,841,571	19	26	440,783	1,345,121	88,391	5,638,425	185	214	615,323	1,771,812	77,465,933	3.02
11/24/2012	61,331,977	1394 (\$50, N) - 11/19/2012	2,768,876	7	8	5,086,879	91,409	1,021,878	883,407	425	200	2,003,365	33	41	472,723	1,300,693	85,037	10,768,045	250	325	1,053,006	1,637,536	88,504,830	3.45
12/1/2012	58,420,598	0	3,304,053	9	10	5,123,778	97,511	1,086,916	925,805	225	275	2,358,380	49	12	533,175	1,319,684	92,240	43,264,700	550	40	2,894,606	1,797,096	121,218,541	4.72
12/8/2012	62,489,745	1479 (\$1, N); 1485 (\$5, N) - 12/03/12	2,971,837	11	12	5,374,747	101,479	1,129,990	1,359,739	425	575	1,861,503	13	20	445,171	1,391,477	94,879	2,832,293	50	40	362,145	1,704,896	82,119,900	3.20
12/15/2012	59,661,880	0	3,087,087	13	14	5,221,374	98,173	1,104,769	1,928,422	775	1,000	1,933,357	27	35	456,193	1,398,647	88,811	2,808,938	50	40	364,704	1,574,508	79,726,862	3.11
12/22/2012	63,556,886	1481 (\$1, N); 1482 (\$2, N); 1483 (\$5, N) - 12/17/12	3,076,409	15	16	5,170,946	94,116	1,108,894	1,415,548	1,250	200	1,774,922	12	12	431,471	1,385,861	87,012	2,658,349	50	40	349,278	1,531,847	82,641,539	3.22
12/29/2012	63,547,886	0	2,869,329	17	18	4,868,470	90,224	1,041,264	922,869	200	225	1,670,747	18	25	400,587	1,289,758	79,651	2,413,294	50	40	324,222	1,389,460	80,907,760	3.15
1/5/2013	60,452,721	1484 (\$5, N) - 12/31/12	2,962,822	19	20	5,157,831	97,210	1,098,429	1,363,512	350	500	1,865,613	30	39	443,570	1,396,145	87,787	2,524,666	50	60	339,142	1,496,322	79,285,768	3.09
1/12/2013	58,862,997	1386 (\$2, N); 1536 (\$10, N) - 01/07/2013	2,588,023	4	5	4,974,232	92,872	1,079,444	1,622,926	700	900	2,036,427	47	55	471,998	1,345,510	81,625	2,755,940	70	80	349,383	1,480,788	77,742,164	3.03
1/19/2013	58,494,057	01/14/2013; 1538 (\$3, N) - 01/17/2013;	2,670,967	6	7	5,115,846	99,182	1,069,099	906,490	200	225	2,214,850	62	70	498,541	1,374,543	87,921	3,323,356	90	100	408,226	1,488,984	77,752,061	3.03
1/26/2013	57,871,744	0	2,733,016	8	9	4,936,726	91,918	1,047,379	1,178,148	325	475	2,367,780	80	89	526,051	1,401,635	87,842	3,808,150	110	130	454,194	1,460,376	77,964,959	3.04
2/2/2013	61,846,715	1489 (\$2, N); 1486 (\$20, N) - 01/28/2013	2,754,143	10	11	5,220,197	96,971	1,066,170	1,109,445	650	200	1,731,470	12	13	423,745	1,460,770	96,289	5,037,974	151	176	570,151	1,465,010	82,879,050	3.23
2/9/2013	70,374,906	1510 (\$5, N) - 2/4/13; 1537 (\$3, N) - 2/5/13	2,893,143	12	13	5,374,541	101,660	1,110,298	1,053,776	225	325	1,785,080	19	12	435,112	1,483,017	96,782	4,830,224	208	40	551,530	1,468,476	91,558,544	3.57
2/16/2013	71,002,438	1451 (\$3, N); 1453 (\$5, N) - 2/11/13	2,910,257	14	15	5,397,708	99,470	1,091,337	1,430,815	475	650	1,770,362	13	20	431,516	1,502,480	92,250	2,752,192	50	60	366,358	1,450,452	90,297,635	3.52
2/23/2013	71,203,934	1496 (\$1, N); 1399 (\$2, N); 1495 (\$5, N) - 2/18/13; 1450 (\$2, N) - 2/22/13	2,716,839	16	4	5,343,246	99,957	1,083,596	1,849,824	850	1,100	1,759,469	26	12	429,347	1,473,358	91,116	3,067,388	70	80	394,142	1,421,708	90,933,923	3.54
3/2/2013	74,551,567	1474 (\$2, N) - 2/25/13	2,667,146	5	6	5,664,284	109,000	1,111,025	954,451	200	225	1,801,090	13	19	443,330	1,627,457	108,647	3,852,426	90	103	475,464	1,464,008	94,829,894	3.69
3/9/2013	75,360,138	1427 (\$1, N); 1497 (\$2, N); 1498 (\$5, N) - 3/4/13	2,711,613	7	8	5,687,827	106,680	1,111,266	1,024,080	325	200	1,914,669	26	33	465,588	1,592,687	105,438	4,739,852	123	150	558,580	1,429,484	96,807,901	3.77
3/16/2013	70,065,528	0	2,704,692	9	10	5,296,558	99,894	1,069,350	982,380	225	325	1,796,816	41	12	443,221	1,497,910	96,023	6,065,856	183	216	682,736	1,320,128	92,121,091	3.59
3/23/2013	70,137,284	1499 (\$1, N); 1500 (\$5, N) - 3/18/13	2,572,262	4	4	5,315,709	100,840	1,072,767	859,810	200	200	1,808,889	13	20	449,461	1,524,260	99,002	12,246,011	260	320	1,227,175	1,432,838	98,846,308	3.85
3/30/2013	68,758,522	0	2,606,382	5	6	5,301,324	99,384	1,075,802	995,045	225	300	1,902,475	26	34	458,139	1,499,789	95,154	2,681,422	40	50	363,584	1,518,592	87,355,613	3.40
4/6/2013	73,270,054	1501 (\$2, N); 1506 (\$3, N); 1471 (\$5, N) - 4/1/13	2,599,044	7	4	5,604,670	105,096	1,113,516	1,442,797	450	625	2,176,834	42	50	503,159	1,610,636	103,097	2,793,981	40	50	377,717	1,618,445	93,319,046	3.63
4/13/2013	64,738,900	0	2,446,701	5	6	5,338,308	100,575	1,079,753	1,245,341	825	200	2,326,285	56	66	524,253	1,550,435	92,346	3,014,428	60	70	401,719	1,577,650	84,436,693	3.29
weekly change	-11.8%		-5.9%			-4.8%	-4.3%	-3.0%	-13.7%			6.9%			4.2%	-3.7%	-10.4%	7.9%			6.4%	-2.5%	-9.5%	
<b>SALES</b>			<b>SALES</b>			<b>SALES</b>	<b>SALES</b>	<b>SALES</b>	<b>SALES</b>			<b>SALES</b>			<b>SALES</b>	<b>SALES</b>	<b>SALES</b>	<b>SALES</b>			<b>SALES</b>		<b>SALES</b>	<b>% of Sales</b>
Calendar Year to date	4,141,991,984		204,189,303			352,657,494	7,029,496	79,071,034	81,256,445			222,265,863			44,578,792	92,945,458	6,312,296	297,085,429			34,580,198	53,150,907	5,617,114,697	100.0%
Fiscal Year to date 2013	2,008,589,172		93,443,466			167,174,886	3,140,562	35,002,915	36,776,623			64,141,421			15,069,444	45,304,774	2,957,469	166,622,337			17,582,099	53,150,907	2,708,956,075	100.0%