



*WEEKLY SALES SUMMARY*

Unaudited

[Week Ending: 04/17/2010](#)

Texas Lottery Commission  
Fiscal Year to Date Sales Comparison  
Unaudited

Through the week ending 04/17/2010 (33 weeks)

Sales by Game	FY 2008 *	FY 2009 **	FY 2010	\$ Change		% Change	
				FY 2010 to FY 2008	FY 2010 to FY 2009 to	FY 2010 to FY 2008	FY 2010 to FY 2009
Instant	\$ 1,803,466,861	\$ 1,763,272,624	\$ 1,770,151,067	\$ -33,315,794	\$ 6,878,443	-1.8%	0.4%
Lotto Texas	132,589,528	121,354,681	171,976,260	39,386,732	50,621,579	29.7%	41.7%
Pick 3	183,637,349	183,015,666	171,235,368	-12,401,981	-11,780,298	-6.8%	-6.4%
Pick 3 Sum It Up	4,040,553	3,849,464	3,457,974	-582,579	-391,491	-14.4%	-10.2%
Cash Five	48,941,199	45,488,775	42,312,475	-6,628,725	-3,176,301	-13.5%	-7.0%
Texas Two Step	28,916,145	32,664,277	28,606,301	-309,844	-4,057,976	-1.1%	-12.4%
Mega Millions	108,848,803	118,493,767	112,997,856	4,149,053	-5,495,911	3.8%	-4.6%
Megaplier	25,825,594	27,332,756	25,321,119	-504,475	-2,011,637	-2.0%	-7.4%
Daily 4	27,016,959	28,582,086	33,226,788	6,209,830	4,644,703	23.0%	16.3%
Daily 4 Sum It Up	6,103,168	3,493,349	3,104,516	-2,998,653	-388,834	-49.1%	-11.1%
Powerball	-	-	20,023,444	20,023,444	20,023,444	-	-
Power Play	-	-	4,640,692	4,640,692	4,640,692	-	-
<b>Total</b>	<b>\$ 2,369,386,158</b>	<b>\$ 2,327,547,444</b>	<b>\$ 2,387,053,858</b>	<b>\$ 17,667,700</b>	<b>\$ 59,506,414</b>	<b>0.7%</b>	<b>2.6%</b>

\* 3 extra days      \*\* 1 extra day

Texas Lottery Commission  
Fiscal Year to Date Cumulative Average Sales Comparison  
Unaudited

Through the week ending 04/17/2010 (33 weeks)

Sales by Game	FY 2008	FY 2009	FY 2010
Instant	\$ 7,773,564	\$ 7,666,403	\$ 7,729,917
Lotto Texas	571,507	527,629	750,988
Pick 3	791,540	795,720	747,753
Pick 3 Sum It Up	17,416	16,737	15,100
Cash Five	210,953	197,777	184,771
Texas Two Step	124,639	142,019	124,918
Mega Millions	469,176	515,190	493,440
Megaplier	111,317	118,838	110,573
Daily 4	116,452	124,270	145,095
Daily 4 Sum It Up	26,307	15,188	13,557
Powerball	-	-	260,045 *
Power Play	-	-	60,269 *
<b>Total</b>	<b>\$ 10,212,871</b>	<b>\$ 10,119,771</b>	<b>\$ 10,636,426</b>
	thru 04/19/2008 232 days	thru 04/18/2009 230 days	thru 04/17/2010 229 days * 77 days

Texas Lottery Commission  
Fiscal Year Over Year Change in Sales  
Unaudited  
FY 2010 Compared to FY 2009

Week	FY 2010 Week Ending	INSTANT TICKETS				ON-LINE GAMES				TOTAL SALES			
		FY 2010	FY 2009	Difference	% change - Cumulative Sales	FY 2010	FY 2009	Difference	% change - Cumulative Sales	FY 2010	FY 2009	Difference	% change - Cumulative Sales
1	9/5/2009**	\$40,148,241	\$44,890,104	(\$4,741,863)	-10.6%	\$15,859,194	\$14,722,011	\$1,137,184	7.7%	\$56,007,435	\$59,612,115	(\$3,604,680)	-6.0%
2	9/12/2009	\$49,896,100	\$46,309,551	\$3,586,549	7.7%	\$18,206,315	\$13,704,860	\$4,501,455	32.8%	\$68,102,415	\$60,014,411	\$8,088,004	13.5%
3	9/19/2009	\$50,971,937	\$42,923,171	\$8,048,766	18.8%	\$18,859,622	\$12,291,263	\$6,568,359	53.4%	\$69,831,559	\$55,214,434	\$14,617,125	26.5%
4	9/26/2009	\$49,975,243	\$47,042,801	\$2,932,442	6.2%	\$19,345,435	\$14,222,339	\$5,123,096	36.0%	\$69,320,678	\$61,265,140	\$8,055,538	13.1%
5	10/3/2009	\$52,283,569	\$50,747,162	\$1,536,407	3.0%	\$20,991,695	\$15,784,472	\$5,207,223	33.0%	\$73,275,264	\$66,531,634	\$6,743,630	10.1%
6	10/10/2009	\$52,238,261	\$49,763,789	\$2,474,472	5.0%	\$21,547,439	\$15,622,498	\$5,924,941	37.9%	\$73,785,700	\$65,386,287	\$8,399,413	12.8%
7	10/17/2009	\$50,806,599	\$49,299,053	\$1,507,546	3.1%	\$23,114,594	\$15,167,940	\$7,946,654	52.4%	\$73,921,193	\$64,466,993	\$9,454,200	14.7%
8	10/24/2009	\$50,731,592	\$49,977,581	\$754,011	1.5%	\$17,274,411	\$14,525,843	\$2,748,568	18.9%	\$68,006,003	\$64,503,424	\$3,502,579	5.4%
9	10/31/2009	\$50,684,853	\$50,346,542	\$338,311	0.7%	\$15,710,720	\$14,838,845	\$871,876	5.9%	\$66,395,573	\$65,185,387	\$1,210,187	1.9%
10	11/7/2009	\$54,633,928	\$54,860,087	(\$226,159)	-0.4%	\$16,961,611	\$16,057,069	\$904,542	5.6%	\$71,595,539	\$70,917,156	\$678,383	1.0%
11	11/14/2009	\$52,109,218	\$53,484,812	(\$1,375,594)	-2.6%	\$16,407,349	\$15,829,819	\$577,530	3.6%	\$68,516,567	\$69,314,631	(\$798,064)	-1.2%
12	11/21/2009	\$52,427,881	\$52,806,511	(\$378,630)	-0.7%	\$15,829,561	\$16,460,748	(\$631,187)	-3.8%	\$68,257,442	\$69,267,259	(\$1,009,817)	-1.5%
13	11/28/2009	\$50,519,477	\$52,199,741	(\$1,680,264)	-3.2%	\$15,710,447	\$17,397,576	(\$1,687,129)	-9.7%	\$66,229,924	\$69,597,317	(\$3,367,393)	-4.8%
14	12/5/2009	\$54,376,448	\$56,731,851	(\$2,355,403)	-4.2%	\$16,905,341	\$20,363,789	(\$3,458,449)	-17.0%	\$71,281,789	\$77,095,640	(\$5,813,852)	-7.5%
15	12/12/2009	\$52,654,632	\$54,109,617	(\$1,454,985)	-2.7%	\$17,726,695	\$22,952,228	(\$5,225,533)	-22.8%	\$70,381,327	\$77,061,845	(\$6,680,518)	-8.7%
16	12/19/2009	\$54,542,793	\$55,777,328	(\$1,234,535)	-2.2%	\$19,379,751	\$15,833,517	\$3,546,234	22.4%	\$73,922,544	\$71,610,845	\$2,311,699	3.2%
17	12/26/2009	\$56,482,042	\$57,597,885	(\$1,115,843)	-1.9%	\$17,582,779	\$15,851,771	\$1,731,009	10.9%	\$74,064,821	\$73,449,656	\$615,166	0.8%
18	1/2/2010	\$57,952,304	\$57,582,115	\$370,189	0.6%	\$16,542,885	\$16,900,028	(\$357,143)	-2.1%	\$74,495,189	\$74,482,143	\$13,047	0.0%
19	1/9/2010	\$53,471,476	\$54,250,945	(\$779,469)	-1.4%	\$17,025,616	\$16,203,220	\$822,396	5.1%	\$70,497,092	\$70,454,165	\$42,927	0.1%
20	1/16/2010	\$50,524,929	\$51,625,339	(\$1,100,410)	-2.1%	\$17,489,048	\$15,701,605	\$1,787,443	11.4%	\$68,013,977	\$67,326,944	\$687,033	1.0%
21	1/23/2010	\$51,372,320	\$52,789,573	(\$1,417,253)	-2.7%	\$17,908,259	\$15,897,473	\$2,010,786	12.6%	\$69,280,579	\$68,687,046	\$593,533	0.9%
22	1/30/2010	\$51,826,337	\$55,453,471	(\$3,627,134)	-6.5%	\$19,026,658	\$16,908,272	\$2,118,386	12.5%	\$70,852,995	\$72,361,743	(\$1,508,749)	-2.1%
23	2/6/2010	\$61,705,135	\$62,247,711	(\$542,576)	-0.9%	\$20,262,181	\$18,354,314	\$1,907,868	10.4%	\$81,967,316	\$80,602,025	\$1,365,292	1.7%
24	2/13/2010	\$57,505,343	\$60,509,056	(\$3,003,713)	-5.0%	\$18,530,781	\$19,218,078	(\$687,297)	-3.6%	\$76,036,124	\$79,727,134	(\$3,691,010)	-4.6%
25	2/20/2010	\$58,716,226	\$59,194,623	(\$478,397)	-0.8%	\$19,257,668	\$21,098,199	(\$1,840,531)	-8.7%	\$77,973,894	\$80,292,822	(\$2,318,928)	-2.9%
26	2/27/2010	\$57,442,427	\$58,857,216	(\$1,414,789)	-2.4%	\$20,116,011	\$24,116,924	(\$4,000,914)	-16.6%	\$77,558,438	\$82,974,140	(\$5,415,703)	-6.5%
27	3/6/2010	\$61,437,946	\$59,552,257	\$1,885,689	3.2%	\$21,859,136	\$23,995,136	(\$2,136,000)	-8.9%	\$83,297,082	\$83,547,393	(\$250,311)	-0.3%
28	3/13/2010	\$57,400,063	\$53,754,084	\$3,645,979	6.8%	\$19,979,112	\$18,769,831	\$1,209,281	6.4%	\$77,379,175	\$72,523,915	\$4,855,260	6.7%
29	3/20/2010	\$54,714,545	\$52,581,107	\$2,133,438	4.1%	\$18,159,358	\$15,903,038	\$2,256,320	14.2%	\$72,873,903	\$68,484,145	\$4,389,758	6.4%
30	3/27/2010	\$54,229,797	\$52,560,961	\$1,668,836	3.2%	\$18,841,604	\$16,094,933	\$2,746,671	17.1%	\$73,071,401	\$68,655,894	\$4,415,507	6.4%
31	4/3/2010	\$56,585,236	\$56,249,759	\$335,477	0.6%	\$20,062,318	\$17,357,002	\$2,705,316	15.6%	\$76,647,554	\$73,606,761	\$3,040,793	4.1%
32	4/10/2010	\$54,933,349	\$54,440,987	\$492,362	0.9%	\$21,849,425	\$17,660,600	\$4,188,825	23.7%	\$76,782,774	\$72,101,587	\$4,681,187	6.5%
33	4/17/2010	\$54,850,820	\$52,755,834	\$2,094,986	4.0%	\$22,579,780	\$18,469,585	\$4,110,195	22.3%	\$77,430,600	\$71,225,419	\$6,205,181	8.7%
34	4/24/2010		\$51,450,968				\$20,216,898				\$71,667,866		
35	5/1/2010		\$52,327,090				\$23,520,573				\$75,847,663		
36	5/8/2010		\$53,214,412				\$16,241,207				\$69,455,619		
37	5/15/2010		\$50,785,227				\$15,990,544				\$66,775,771		
38	5/22/2010		\$56,567,077				\$15,874,447				\$72,441,524		
39	5/29/2010		\$55,359,239				\$16,040,196				\$71,399,435		
40	6/5/2010		\$60,250,125				\$16,301,599				\$76,551,724		
41	6/12/2010		\$54,979,517				\$16,143,215				\$71,122,732		
42	6/19/2010		\$53,109,433				\$16,357,924				\$69,467,357		

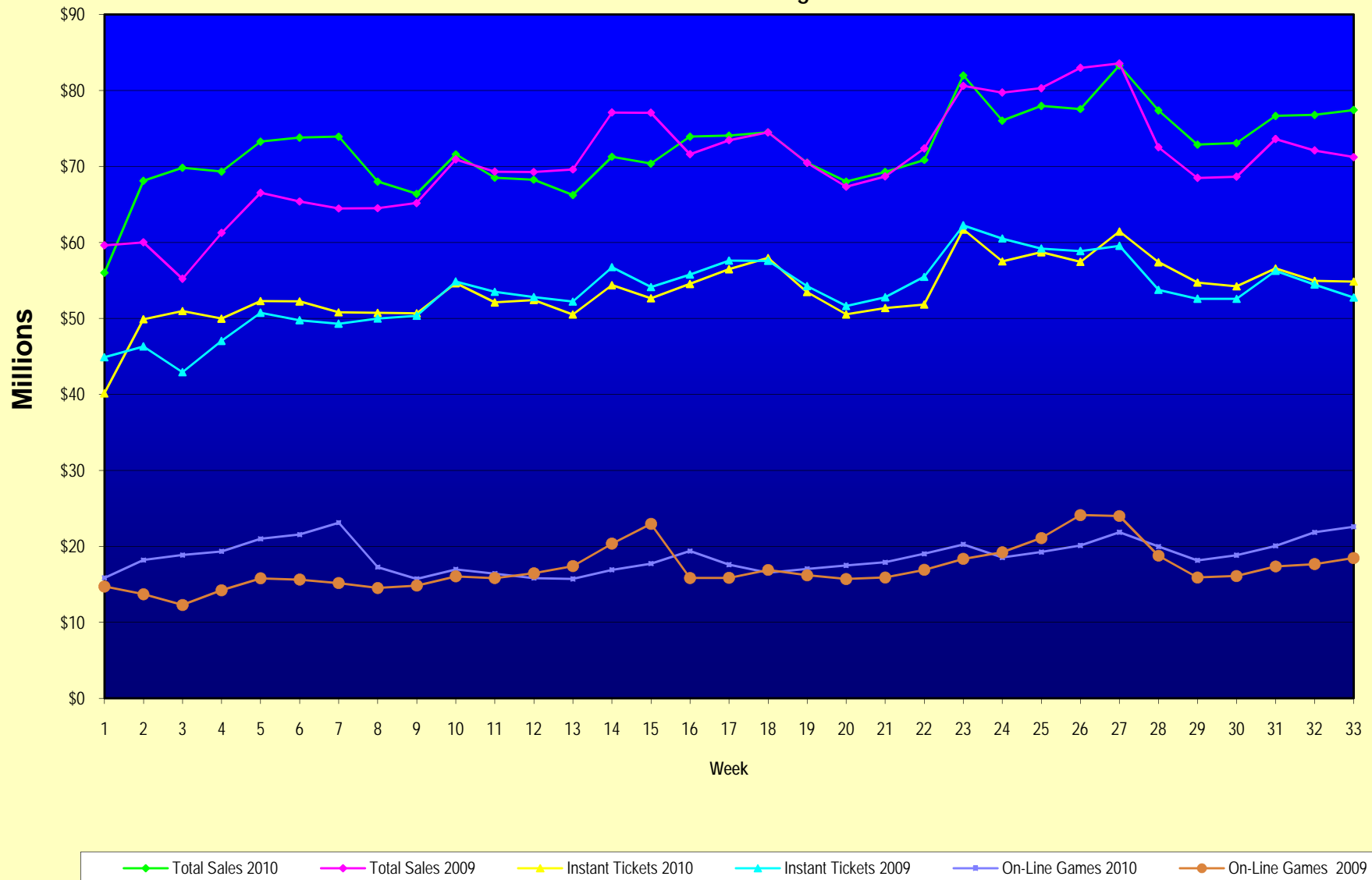
Note: Week 1 is not a full week of sales as this report is prepared on a Fiscal Year basis.

Texas Lottery Commission  
Fiscal Year Over Year Change in Sales  
Unaudited  
FY 2010 Compared to FY 2009

		INSTANT TICKETS				ON-LINE GAMES				TOTAL SALES			
Week	FY 2010 Week Ending	FY 2010	FY 2009	Difference	% change - Cumulative Sales	FY 2010	FY 2009	Difference	% change - Cumulative Sales	FY 2010	FY 2009	Difference	% change - Cumulative Sales
43	6/26/2010		\$53,431,083				\$16,786,203				\$70,217,286		
44	7/3/2010		\$55,518,615				\$18,292,421				\$73,811,036		
45	7/10/2010		\$53,004,390				\$17,842,530				\$70,846,920		
46	7/17/2010		\$52,498,940				\$16,138,341				\$68,637,281		
47	7/24/2010		\$51,550,731				\$16,748,137				\$68,298,868		
48	7/31/2010		\$51,893,977				\$18,065,180				\$69,959,157		
49	8/7/2010		\$54,506,395				\$19,258,117				\$73,764,512		
50	8/14/2010		\$51,766,530				\$20,828,293				\$72,594,823		
51	8/21/2010		\$51,909,040				\$24,913,396				\$76,822,436		
52	8/28/2010		\$50,848,517				\$35,661,563				\$86,510,080		
53			\$13,288,367				\$3,085,816				\$16,374,183		
Total thru Current Week		\$1,770,151,067	\$1,763,272,624	\$6,878,443	0.4%	\$616,902,791	\$564,274,820	\$52,627,971	9.3%	\$2,387,053,858	\$2,327,547,444	\$59,506,414	2.6%
Fiscal Year Total		\$1,770,151,067	\$2,791,532,297			\$616,902,791	\$928,581,414			\$2,387,053,858	\$3,720,113,711		

\*\* FY 2010 includes 5 days; FY 2009 includes 6 days

# Texas Lottery Commission Fiscal Year Over Year Change in Sales



Note: Week 1 is not a full week of sales as this report is prepared on a Fiscal Year basis.

Texas Lottery Commission  
Instant Tickets by Price Point  
Sales, Prize Expense, Sales Contribution and Payout Percentage With Year Over Year Changes  
Unaudited

Fiscal Year	Price Point	# of Active Games	FY Sales	% of Instant Ticket Sales	Year over Year Change in Sales	FY Prize Expense	Year over Year Change in Prize Expense	FY Sales Contribution	Year over Year Change in Contribution	Average Prize Payout %	Year over Year Change in Payout %
2009	\$1.00	41	154,299,938	8.8%		92,789,746		61,510,192		60.1%	0.1%
thru	\$2.00	38	303,849,666	17.2%		198,057,527		105,792,139		65.2%	-0.1%
4/18/2009	\$3.00	16	184,574,889	10.5%		121,195,615		63,379,274		65.7%	-0.1%
	\$5.00	41	541,266,999	30.7%		368,107,986		173,159,013		68.0%	0.1%
	\$7.00	7	87,615,367	5.0%		59,583,918		28,031,449		68.0%	0.0%
	\$10.00	18	251,151,000	14.2%		175,728,784		75,422,216		70.0%	0.0%
	\$20.00	8	156,000,160	8.8%		111,933,485		44,066,675		71.8%	0.0%
	\$25.00	1	2,372,325	0.1%		1,725,527		646,798		72.7%	0.2%
	\$30.00	3	10,024,230	0.6%		7,263,928		2,760,302		72.5%	0.1%
	\$50.00	4	72,118,050	4.1%		52,568,118		19,549,932		72.9%	1.0%
<b>Total</b>		<b>177</b>	<b>\$1,763,272,624</b>			<b>\$1,188,954,635</b>		<b>\$574,317,989</b>		<b>67.4%</b>	<b>-0.3%</b>
2010	\$1.00	35	149,332,491	8.4%		89,770,356		59,562,135		60.1%	0.0%
thru	\$2.00	36	247,358,113	14.0%		162,228,487		85,129,626		65.6%	0.7%
4/17/2010	\$3.00	18	223,435,407	12.6%		146,931,656		76,503,751		65.8%	0.3%
	\$5.00	41	519,348,146	29.3%		352,671,988		166,676,158		67.9%	-0.2%
	\$7.00	6	72,819,460	4.1%		49,513,199		23,306,261		68.0%	0.0%
	\$10.00	15	261,517,070	14.8%		182,795,118		78,721,952		69.9%	-0.1%
	\$20.00	6	245,743,680	13.9%		182,634,982		63,108,698		74.3%	1.6%
	\$25.00	0	-	0.0%		-		-		0.0%	-100.0%
	\$30.00	0	-	0.0%		-		-		0.0%	-100.0%
	\$50.00	3	50,596,700	2.9%		39,213,871		11,382,829		77.5%	4.0%
<b>Total</b>		<b>160</b>	<b>\$1,770,151,067</b>			<b>\$1,205,759,657</b>		<b>\$564,391,410</b>		<b>68.1%</b>	<b>0.5%</b>
Variance	\$1.00	-6	-4,967,447		-3.2%	-3,019,390	-3.3%	-1,948,057	-3.2%	-0.02%	
2010 to	\$2.00	-2	-56,491,553		-18.6%	-35,829,040	-18.1%	-20,662,513	-19.5%	0.40%	
2009	\$3.00	2	38,860,518		21.1%	25,736,041	21.2%	13,124,477	20.7%	0.10%	
	\$5.00	0	-21,918,853		-4.0%	-15,435,999	-4.2%	-6,482,854	-3.7%	-0.10%	
	\$7.00	-1	-14,795,907		-16.9%	-10,070,718	-16.9%	-4,725,189	-16.9%	-0.01%	
	\$10.00	-3	10,366,070		4.1%	7,066,334	4.0%	3,299,736	4.4%	-0.07%	
	\$20.00	-2	89,743,520		57.5%	70,701,497	63.2%	19,042,023	43.2%	2.57%	
	\$25.00	-1	-2,372,325		-100.0%	-1,725,527	-100.0%	-646,798	-100.0%	-72.74%	
	\$30.00	-3	-10,024,230		-100.0%	-7,263,928	-100.0%	-2,760,302	-100.0%	-72.46%	
	\$50.00	-1	-21,521,350		-29.8%	-13,354,248	-25.4%	-8,167,102	-41.8%	4.61%	
<b>Total</b>		<b>-17</b>	<b>\$6,878,443</b>		<b>0.4%</b>	<b>\$16,805,022</b>	<b>1.4%</b>	<b>-\$9,926,575</b>	<b>-1.7%</b>	<b>0.69%</b>	

Texas Lottery Commission  
Instant Tickets by Price Point  
Sales, Prize Expense, Sales Contribution and Payout Percentage With Year Over Year Changes  
Unaudited

Notes - Instant Ticket Variances

			FY 2010			FY 2009		Difference
Sales	\$1 - \$7		\$1,212,293,617			\$1,271,606,859		-\$59,313,242
Prize Exp.	\$1 - \$7		\$801,115,687			\$839,734,793		-\$38,619,106
Sales Cont.	\$1 - \$7		\$411,177,930			\$431,872,066		-\$20,694,136
Prize Exp. %	\$1 - \$7		66.1%			66.0%		0.0%
			FY 2010			FY 2009		Difference
Sales	\$10 - \$50		\$557,857,450			\$491,665,765		\$66,191,685
Prize Exp.	\$10 - \$50		\$404,643,971			\$349,219,843		\$55,424,128
Sales Cont.	\$10 - \$50		\$153,213,479			\$142,445,922		\$10,767,557
Prize Exp. %	\$10 - \$50		72.5%			71.0%		1.5%
			FY 2010			FY 2009		Difference
Sales	Instant		\$1,770,151,067			\$1,763,272,624		\$6,878,443
Prize Exp.	Instant		\$1,205,759,657			\$1,188,954,635		\$16,805,022
Sales Cont.	Instant		\$564,391,410			\$574,317,989		-\$9,926,579
Prize Exp. %	Instant		68.1%			67.4%		0.7%

			FY 2010			FY 2009		Difference
Sales	\$1 - \$10		\$1,473,810,687			\$1,522,757,859		-\$48,947,172
Prize Exp.	\$1 - \$10		\$983,910,805			\$1,015,463,576		-\$31,552,772
Sales Cont.	\$1 - \$10		\$489,899,882			\$507,294,283		-\$17,394,400
Prize Exp. %	\$1 - \$10		66.8%			66.7%		0.1%
			FY 2010			FY 2009		Difference
Sales	\$20 - \$50		\$296,340,380			\$240,514,765		\$55,825,615
Prize Exp.	\$20 - \$50		\$221,848,853			\$173,491,059		\$48,357,794
Sales Cont.	\$20 - \$50		\$74,491,527			\$67,023,706		\$7,467,821
Prize Exp. %	\$20 - \$50		74.9%			72.1%		2.7%
			FY 2010			FY 2009		Difference
Sales	Instant		\$1,770,151,067			\$1,763,272,624		\$6,878,443
Prize Exp.	Instant		\$1,205,759,657			\$1,188,954,635		\$16,805,022
Sales Cont.	Instant		\$564,391,410			\$574,317,989		-\$9,926,579
Prize Exp. %	Instant		68.1%			67.4%		0.7%



Texas Lottery Commission  
Weekly Sales Summary  
& Comparison to Previous Week  
Unaudited

	Week Ending 04/17/2010	% of Sales	Week Ending 04/10/2010	% of Sales	\$ change	% change
	<u>THIS WEEK</u>		<u>LAST WEEK</u>			
Total Sales	<u>\$77,430,600</u>		<u>\$76,782,774</u>		<u>\$647,826</u>	0.84%
Instant Tickets	<u>\$54,850,820</u>	70.8%	<u>\$54,933,349</u>	71.5%	<u>-\$82,529</u>	-0.15%
Lotto Texas	\$6,384,113	8.2%	\$6,482,975	8.4%	-\$98,862	-1.52%
Pick 3	\$5,308,745	6.9%	\$5,377,072	7.0%	-\$68,327	-1.27%
Pick 3 Sum It Up	\$109,011	0.1%	\$113,149	0.1%	-\$4,138	-3.66%
Cash Five	\$1,272,019	1.6%	\$1,285,489	1.7%	-\$13,470	-1.05%
Texas Two Step	\$761,931	1.0%	\$1,298,097	1.7%	-\$536,166	-41.30%
Mega Millions	\$3,525,945	4.6%	\$2,951,164	3.8%	\$574,781	19.48%
Megaplier	\$750,658	1.0%	\$670,723	0.9%	\$79,935	11.92%
Daily 4	\$1,057,948	1.4%	\$1,055,268	1.4%	\$2,681	0.25%
Daily 4 Sum It Up	\$94,471	0.1%	\$96,328	0.1%	-\$1,857	-1.93%
Powerball	\$2,765,224	3.6%	\$2,066,088	2.7%	\$699,136	33.84%
Power Play	\$549,715	0.7%	\$453,074	0.6%	\$96,641	21.33%
Total Online Sales	<u>\$22,579,780</u>		<u>\$21,849,425</u>		<u>\$730,355</u>	3.34%

\* Totals may not sum due to rounding.

Texas Lottery Commission  
Weekly Sales Summary  
Unaudited

INSTANT TICKETS  
TOP TEN SELLING GAMES

For the Week Ending : 04/17/2010

Rank	Price Point	Game	Sales (Millions)
1	\$ 20	\$500,000,000 BLOCKBUSTER	\$ 3.941
2	\$ 5	PLATINUM 8S	\$ 3.366
3	\$ 10	\$100,000 SUPER 7S	\$ 3.081
4	\$ 5	CASH EXTRAVAGANZA	\$ 2.419
5	\$ 50	ULTIMATE CASINO JACKPOT	\$ 2.378
6	\$ 20	\$1,000,000 GOLD RUSH	\$ 2.336
7	\$ 5	\$50,000 RICHES	\$ 2.249
8	\$ 3	TRIPLE PAYOUT	\$ 2.117
9	\$ 10	GOLD BAR BONANZA	\$ 1.778
10	\$ 10	SET FOR LIFE	\$ 1.732

Texas Lottery Commission  
Prize Payout Tracking Report  
Unaudited

Through Week Ending 04/17/2010

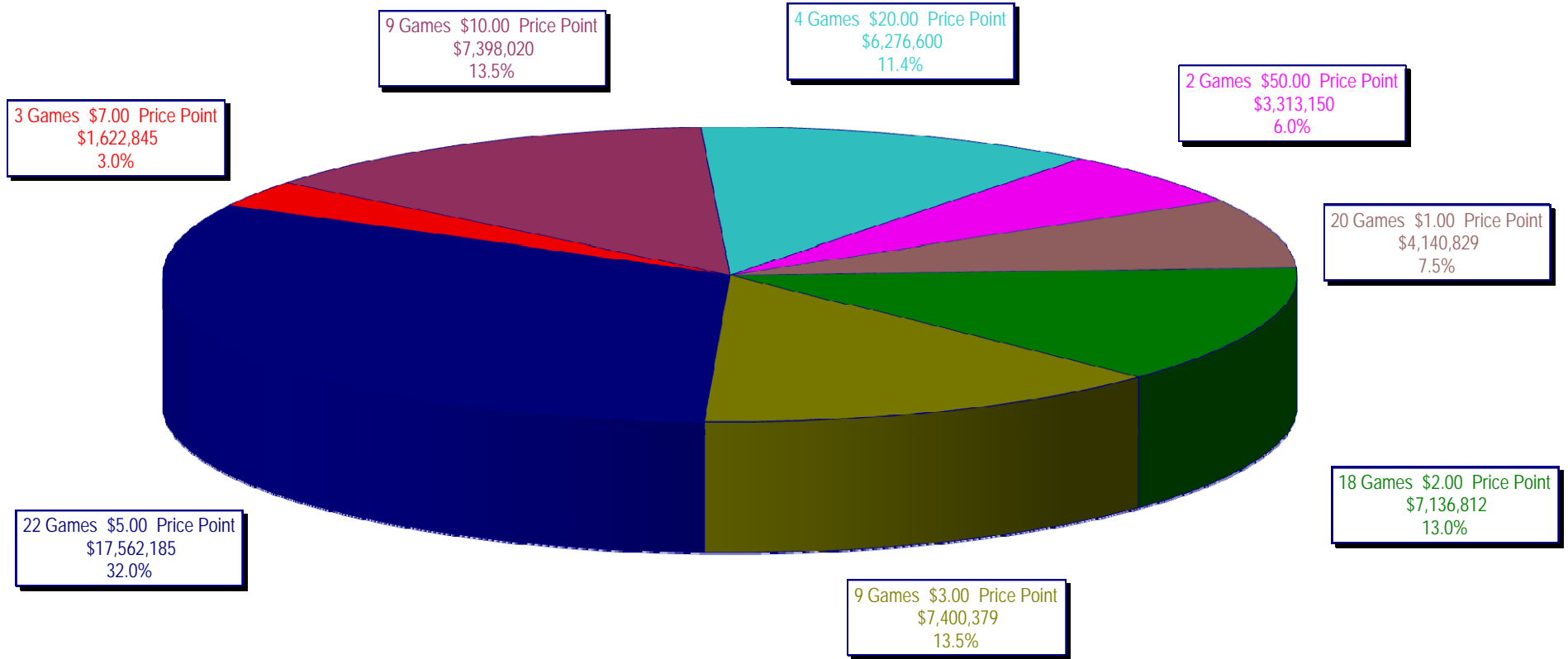
On-Line Sales

		FY Sales Through Week Ending 4/17/2010		FY Prize Expense Through Week Ending 4/17/2010	Actual* Prize Payout	Base Payout (Prize Pool)
Lotto	\$	171,976,260	\$	86,033,031	50.03%	50.00%
Pick 3		171,235,368		81,512,420	47.60%	50.00%
Pick 3 Sum It Up		3,457,974		1,988,692	57.51%	50.00%
Cash Five		42,312,475		22,121,973	52.28%	50.00%
Texas Two Step		28,606,301		14,778,377	51.66%	50.00%
Mega Millions		112,997,856		56,149,421	49.69%	50.00%**
Megaplier		25,321,119		8,529,782	33.69%	N/A
Daily 4		33,226,788		15,559,025	46.83%	50.00%
Daily 4 Sum It Up		3,104,516		1,281,491	41.28%	50.00%
Powerball		20,023,444		9,302,206	46.46%	50.00%
Power Play		4,640,692		1,272,212	27.41%	50.00%
<b>Totals</b>	\$	<b>616,902,791</b>	\$	<b>298,528,630</b>	<b>48.39%</b>	

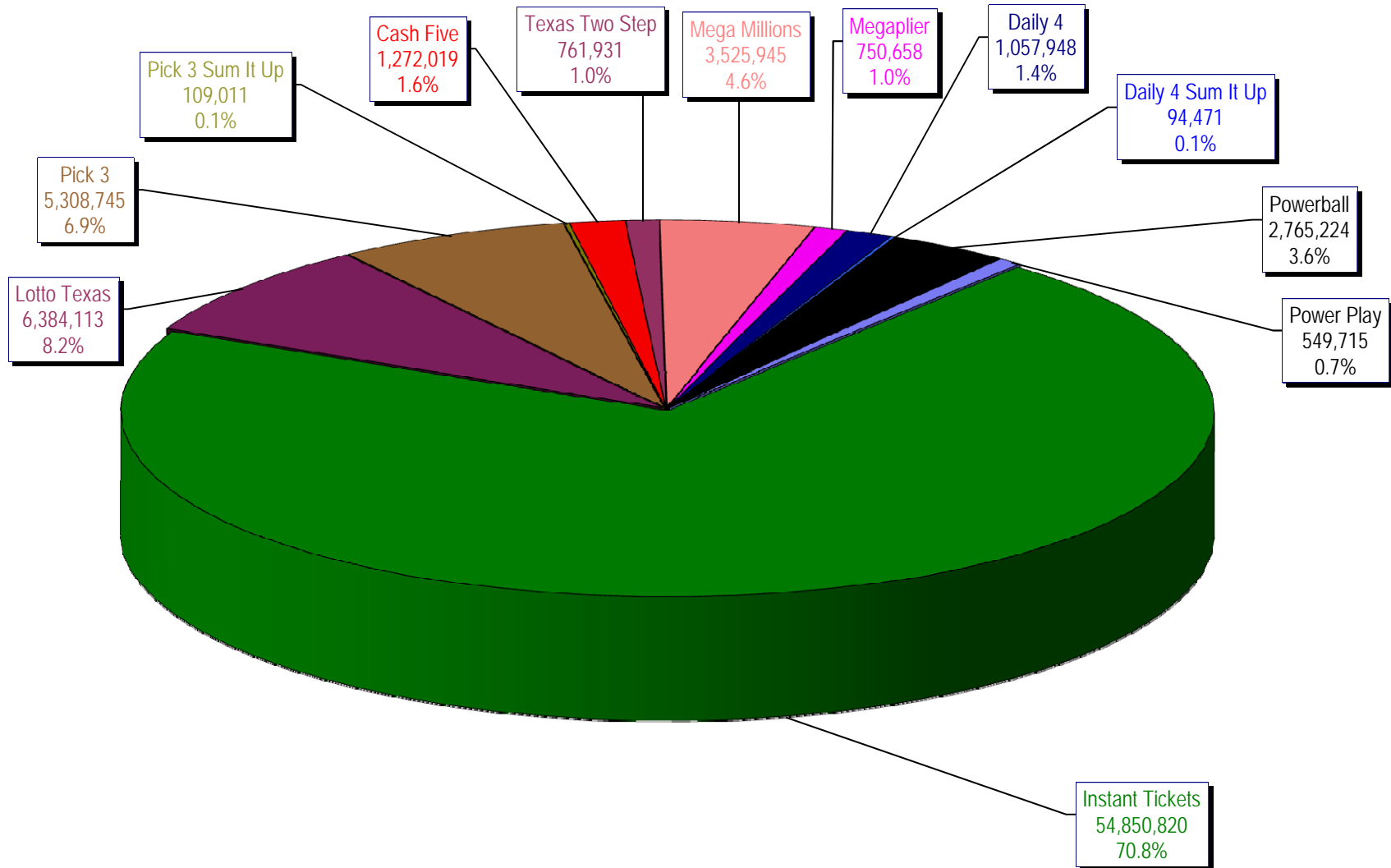
\* Before Unclaimed Prizes

\*\* Estimated; depends on # of guaranteed prizes won in Texas

Texas Lottery Commission  
Instant Ticket Sales  
For the Week Ending 04/17/2010  
(Unaudited)



**Texas Lottery Commission**  
**All Game Sales**  
For the Week Ending 04/17/2010  
(Unaudited)



Texas Lottery Commission - Weekly Sales Summary for FY 2010 (Unaudited)

Week Ended	Instant Games	New Games & Dates	Lotto Texas	Jackpot W S	Pick 3	Pick 3 Sum It Up	Cash Five	Texas Two Step	Jackpot M TH	Mega Millions	Jackpot T F	Megaplier	Daily 4	Daily 4 Sum It Up	Powerball	Jackpot W S	Power Play	Total	Per Cap.
9/5/2009	53,436,608.00	1183 (\$2.N) - 08/31/09	6,294,287.00	45 47	5,276,229.00	104,886.00	1,338,093.00	1,212,330.00	1.2 200	2,959,401.00	12 12	708,622.00	955,411.00	95,751.00				72,381,618.00	2.98
9/12/2009	49,896,100.00	1200 (\$1.N); 1201 (\$10.N) - 09/07/09	6,426,945.00	49 51	5,109,927.50	104,641.00	1,278,982.00	771,782.00	225 200	2,811,431.00	18 28	693,407.00	918,268.00	90,931.50				68,102,415.00	2.80
9/19/2009	50,971,937.00	1202 (\$3.N); 1185 (\$5.N) - 09/14/09	6,496,645.00	53 55	5,176,010.00	103,700.00	1,295,302.00	803,124.00	200 225	3,164,844.00	38 51	760,088.00	965,671.50	94,237.00				69,831,558.50	2.87
9/26/2009	49,975,243.00	1141 (\$1.N); 1259 (\$3.N) - 09/21/09	6,765,369.00	57 59	4,894,237.50	98,171.00	1,271,129.00	915,249.00	275 400	3,568,088.00	62 75	822,408.00	918,596.00	92,187.50				69,320,678.00	2.85
10/3/2009	52,283,569.00	1203 (\$2.N); 1172 (\$5.N) - 09/28/09	7,003,107.00	61 63	5,156,873.00	102,841.50	1,315,863.00	1,111,913.00	525 650	4,270,019.00	88 105	939,935.00	993,158.50	97,984.50				73,275,263.50	3.01
10/10/2009	52,238,261.00	1205 (\$1.N); 1263 (\$3.N) - 10/05/09	7,061,948.00	64 67	5,050,571.00	102,586.50	1,300,852.00	811,464.00	200 225	5,100,350.00	122 145	1,050,507.00	971,147.50	98,012.50				73,785,699.50	3.03
10/17/2009	50,806,599.00	1187 (\$2.N); 1193 (\$20.N) - 10/12/09	7,262,683.00	70 73	4,990,457.00	99,389.50	1,276,305.00	769,253.00	200 200	6,449,660.00	170 200	1,245,391.00	931,084.00	90,371.00				73,921,192.50	3.04
10/24/2009	50,731,592.00	1188 (\$3.N); 1189 (\$5.N) - 10/19/09	5,785,292.00	76 4	4,845,815.00	93,256.00	1,282,033.00	806,971.00	225 275	2,776,628.00	12 18	663,491.00	931,641.00	89,284.00				68,006,003.00	2.80
10/31/2009	50,684,853.00	1192 (\$10.N); 1186 (\$1.N) - 10/26/09	3,749,006.00	5 6	4,944,409.00	98,542.50	1,289,523.00	815,750.00	375 200	2,988,991.00	28 40	717,574.00	1,006,435.00	100,489.50				66,395,573.00	2.73
11/7/2009	54,633,928.00	1191 (\$7.N) - 11/02/09	3,982,319.00	7 8	5,265,020.50	105,180.50	1,339,215.00	853,140.00	225 275	3,458,403.00	50 63	795,045.00	1,058,564.00	104,724.00				71,595,539.00	2.94
11/14/2009	52,109,218.00	1218 (\$2.N); 1184 (\$5.N) - 11/09/09	3,985,493.00	9 10	5,172,602.50	104,782.00	1,274,573.00	829,607.00	375 200	3,210,618.00	77 12	752,365.00	983,342.50	93,966.00				68,516,567.00	2.82
11/21/2009	52,427,881.00	0	3,943,958.00	11 12	5,123,802.00	104,705.00	1,255,026.00	797,796.00	225 275	2,834,318.00	17 27	687,221.00	990,042.00	92,693.00				68,257,442.00	2.81
11/28/2009	50,519,477.00	1206 (\$1.N); 1190 (\$5.N); 1264 (\$1.N) - 11/23/09	3,966,034.00	13 14	5,043,210.00	102,783.50	1,202,798.00	693,774.00	200 225	2,932,809.00	37 47	691,194.00	985,336.50	92,508.00				66,229,924.00	2.72
12/5/2009	54,376,448.00	0	4,004,632.00	15 16	5,393,458.00	111,441.50	1,288,282.00	873,210.00	250 350	3,297,486.00	57 69	773,136.00	1,063,424.00	100,271.00				71,281,788.50	2.93
12/12/2009	52,654,632.00	1159 (\$2.N); 1182 (\$5.N) - 12/07/09	4,105,013.00	17 18	5,091,389.00	102,613.50	1,294,933.00	1,075,732.00	475 600	4,054,401.00	83 100	874,842.00	1,030,471.50	97,299.50				70,381,326.50	2.89
12/19/2009	54,542,793.00	1207 (\$1.N); 1208 (\$3.N) - 12/14/09	4,355,440.00	20 21	5,115,559.00	100,562.50	1,293,347.00	1,288,820.00	750 925	5,052,350.00	118 140	1,028,695.00	1,046,577.50	98,399.50				73,922,543.50	3.04
12/26/2009	56,482,042.00	1209 (\$2.N); 1168 (\$5.N) - 12/21/09	4,400,669.00	22 24	4,950,247.50	92,929.50	1,243,523.00	767,273.00	200 200	4,188,741.00	162 12	866,559.00	982,220.50	90,616.50				74,064,821.00	3.04
1/2/2010	57,952,304.00	0	4,605,833.00	26 27	5,021,566.50	97,500.50	1,319,224.00	889,422.00	225 275	2,825,733.00	16 27	676,790.00	1,012,922.00	93,894.00				74,495,189.00	3.06
1/9/2010	53,471,476.00	1210 (1.N); 1211 (\$10.N) - 01/04/10	4,579,485.00	29 31	5,094,846.00	97,216.00	1,297,994.00	1,024,853.00	375 525	3,114,965.00	37 48	735,440.00	989,636.00	91,180.50				70,497,091.50	2.90
1/16/2010	50,524,929.00	1169 (\$1.N); 1212 (\$5.N) - 01/11/10	4,695,322.00	32 33	5,126,839.50	97,356.00	1,291,866.00	940,190.00	200 200	3,482,816.00	60 73	785,670.00	977,468.00	91,520.00				68,013,976.50	2.80
1/23/2010	51,372,320.00	1195 (\$2.N) - 01/18/10 1198 (\$2.N); 1164 (\$5.N) - 01/21/10	4,777,379.05	35 36	5,022,299.50	95,486.50	1,278,497.00	781,017.00	200 225	4,024,412.00	86 105	862,949.00	977,063.00	89,155.50				69,280,578.55	2.85
1/30/2010	51,826,337.00	1204 (\$7.N); 1213 (\$1.N) - 01/25/10 1265 (\$2.N) - 01/27/10	4,847,766.00	37 39	5,114,072.00	98,628.00	1,286,765.00	792,340.00	275 200	4,803,680.00	121 144	986,194.00	1,006,099.50	91,113.00				70,852,994.50	2.91
2/6/2010	61,705,135.00	1068 (\$20.N) - 02/01/10 1199 (\$3.N); 1215 (\$5.N) - 02/08/10	4,881,934.00	41 42	5,542,131.50	107,342.50	1,338,894.00	772,320.00	225 200	2,650,100.00	12 20	628,992.00	1,056,980.00	97,214.00	2,649,068.00	115 140	537,205.00	81,967,316.00	3.37
2/13/2010	57,505,343.00	1216 (\$1.N); 1170 (\$2.N) - 02/15/10	4,819,001.45	44 45	5,356,396.50	103,135.00	1,286,342.00	714,965.00	225 200	2,653,117.00	32 44	630,842.00	1,038,769.00	92,282.00	1,462,396.00	20 25	373,535.00	76,036,123.95	3.13
2/20/2010	58,716,226.00		4,961,565.00	47 49	5,390,327.50	102,608.50	1,316,332.00	788,810.00	225 250	3,028,204.00	56 68	687,590.00	1,078,506.50	94,491.50	1,432,071.00	40 57	377,162.00	77,973,894.00	3.21
2/27/2010	57,442,427.00	1180 (\$5.N) - 02/22/10 1220 (\$1.N); 1221 (\$10.N) - 03/01/10	5,066,421.00	51 52	5,546,306.00	120,380.50	1,305,799.00	960,381.00	350 475	3,364,353.00	83 99	742,490.00	1,050,321.50	94,684.50	1,482,938.00	76 95	381,936.00	77,558,437.50	3.19
3/6/2010	61,437,946.00		5,284,389.00	53 55	5,894,489.50	132,533.50	1,351,147.00	943,000.00	600 200	4,045,564.00	112 133	844,343.00	1,107,306.00	95,953.50	1,741,190.00	114 139	419,220.00	83,297,081.50	3.42
3/13/2010	57,400,063.00	1222 (\$5.N) - 03/08/10	5,197,968.00	57 59	5,571,755.50	126,231.50	1,298,469.00	789,890.00	225 275	2,460,505.00	12 20	585,902.00	1,057,388.50	93,137.50	2,305,472.00	170 200	492,393.00	77,379,175.00	3.18
3/20/2010	54,714,545.00	0	5,307,836.00	60 62	5,269,570.50	112,041.50	1,268,903.00	738,856.00	200 225	2,253,444.00	12 20	546,106.00	1,025,255.00	88,180.50	1,221,348.00	20 28	327,817.00	72,873,902.50	3.00
3/27/2010	54,229,797.00	1223 (\$1.N); 1163 (\$2.N); 1224 (\$5.N) - 03/22/10	5,434,298.00	63 66	5,385,341.00	114,078.00	1,272,060.00	850,623.00	250 350	2,405,789.00	29 40	576,138.00	1,070,268.50	96,399.50	1,295,148.00	43 60	341,461.00	73,071,401.00	3.00
4/3/2010	56,585,236.00	1214 (\$50.N) - 03/29/10	5,600,322.00	68 70	5,501,954.50	115,934.00	1,286,302.00	1,086,427.00	475 600	2,657,756.00	51 63	624,012.00	1,098,758.50	101,177.00	1,602,501.00	81 103	387,174.00	76,647,554.00	3.15
4/10/2010	54,933,349.00	1230 (\$3.N) - 04/05/10 1181 (\$1.N); 1219 (\$5.N) - 04/12/10	6,482,975.00	72 75	5,377,071.50	113,148.50	1,285,488.50	1,298,097.00	750 925	2,951,164.00	76 90	670,723.00	1,055,267.50	96,327.50	2,066,088.00	125 150	453,074.00	76,782,773.50	3.16
4/17/2010	54,850,820.00		6,384,113.00	77 78	5,308,745.00	109,011.00	1,272,019.00	761,931.00	200 225	3,525,945.00	105 122	750,658.00	1,057,948.00	94,470.50	2,765,224.00	175 212	549,715.00	77,430,599.50	3.18
weekly change	-0.15%		-1.52%		-1.27%	-3.66%	-1.05%	-41.30%		19.48%		11.92%	0.25%	-1.93%	33.84%		21.33%	0.84%	
<b>SALES</b>			<b>SALES</b>		<b>SALES</b>	<b>SALES</b>	<b>SALES</b>	<b>SALES</b>		<b>SALES</b>	<b>SALES</b>	<b>SALES</b>	<b>SALES</b>	<b>SALES</b>	<b>SALES</b>		<b>SALES</b>	<b>SALES</b>	<b>% of Sales</b>
Startup to date	38,042,269,366.00		10,651,589,806.50		3,754,833,125.50	15,859,049.00	2,232,216,614.50	506,394,232.00		1,254,528,455.45		290,889,406.00	122,276,999.00	16,858,342.50	20,023,444.00		4,640,692.00	57,120,513,504.45	100.0%
Calendar Year to date	853,252,715.00		80,279,555.50		82,147,560.50	129,025.00	19,831,658.50	13,309,916.00		48,380,998.00		10,889,177.00	15,972,438.00	1,437,649.50	20,023,444.00		4,640,692.00	1,125,630,693.00	100.0%
Fiscal Year to date 2010	1,770,151,067.00		171,976,259.50		171,235,368.00	3,457,973.50	42,312,474.50	28,606,301.00		112,997,856.00		25,321,119.00	33,226,788.00	3,104,515.50	20,023,444.00		4,640,692.00	2,387,053,858.00	100.0%